

Houston Pilots Forecast Package



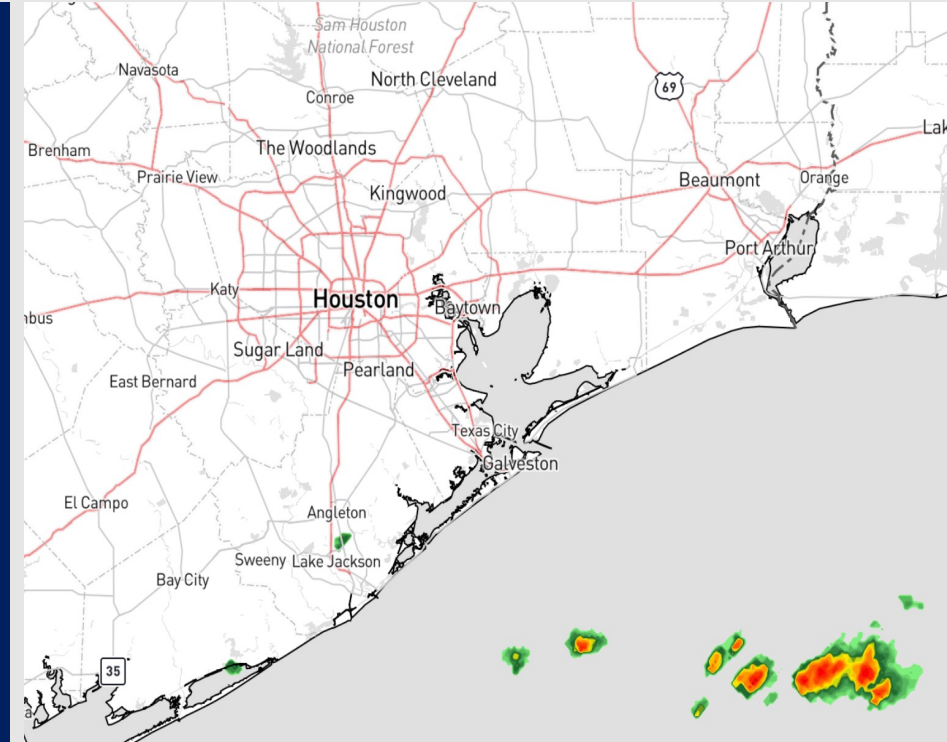
Updated: 1:40 PM CT

Friday, September 1, 2023

Forecaster: Tyler Riggles

Weather Headlines

- Not anticipating tropical development in the Gulf of Mexico over the next 7-10 days but monitoring for potential development in the Atlantic beyond September 8th.
- Favoring dry conditions during the morning hours with rain chances increasing this PM into the weekend
- Not anticipating any visibility concerns over the next few days.



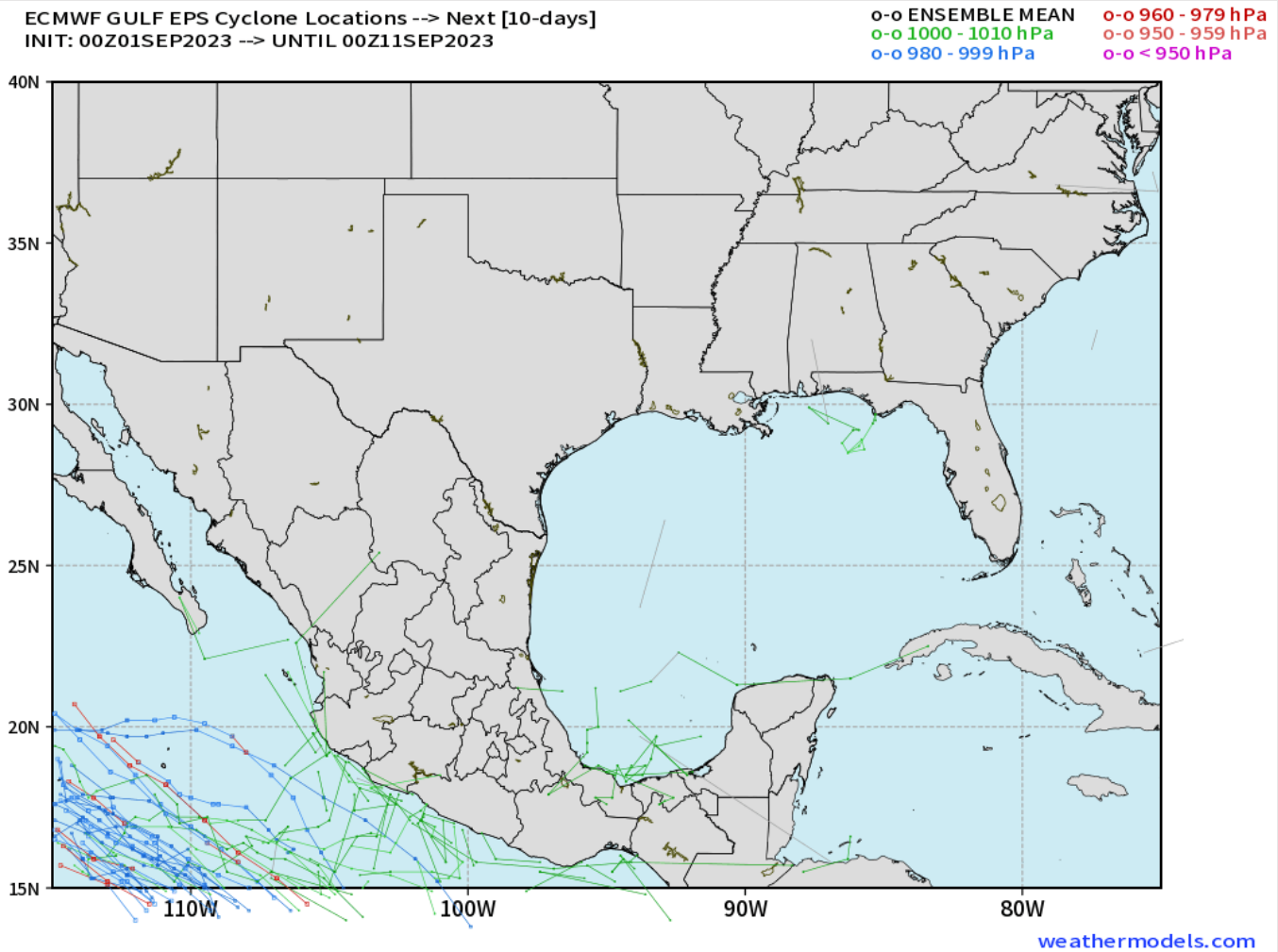
Radar/NWS Alerts: 1:40 PM CT



As always, please do not hesitate to reach out to us with any forecast questions via the chat option on the Weather Porthole or our on-call number, **(317)-560-8122** press 1 for forecast questions.

Houston Pilots Tropical Update

European Model Next 10 Days Tropical Tracks



Not anticipating tropical development in the Gulf of Mexico over the next 7-10 days.

Currently monitoring for potential development in the Atlantic beyond September 8th.

Houston Pilots Visibility Chart (miles)



Forecast Confidence



Time	Fri 1pm	Fri 2pm	Fri 3pm	Fri 4pm	Fri 5pm	Fri 6pm	Fri 7pm	Fri 8pm	Fri 9pm	Fri 10pm	Fri 11pm	Sat 12am	Sat 1am	Sat 2am	Sat 3am	Sat 4am	Sat 5am	Sat 6am	Sat 7am	Sat 8am	Sat 9am	Sat 10am	Sat 11am	Sat 12pm	Sat 1pm	Sat 2pm	Sat 3pm	Sat 4pm	Sat 5pm	Sat 6pm	Sat 7pm	Sat 8pm	Sat 9pm	Sat 10pm	Sat 11pm	Sun 12am		
610 Bridge	10	10	10	10	10	10	10	10	10	10	10	10	10	10	10	10	10	10	10	10	10	10	10	10	10	10	10	10	10	10	10	10	10	10	10	10	10	10
Kinder 1	10	10	10	10	10	10	10	10	10	10	10	10	10	10	10	10	10	10	10	10	10	10	10	10	10	10	10	10	10	10	10	10	10	10	10	10	10	10
Greens Bayou	10	10	10	10	10	10	10	10	10	10	10	10	10	10	10	10	10	10	10	10	10	10	10	10	10	10	10	10	10	10	10	10	10	10	10	10	10	10
Shell Crude	10	10	10	10	10	10	10	10	10	10	10	10	10	10	10	10	10	10	10	10	10	10	10	10	10	10	10	10	10	10	10	10	10	10	10	10	10	10
Lynchburg Ferries	10	10	10	10	10	10	10	10	10	10	10	10	10	10	10	10	10	10	10	10	10	10	10	10	10	10	10	10	10	10	10	10	10	10	10	10	10	10
Exxon 3	10	10	10	10	10	10	10	10	10	10	10	10	10	10	10	10	10	10	10	10	10	10	10	10	10	10	10	10	10	10	10	10	10	10	10	10	10	10
Morgans Point	10	10	10	10	10	10	10	10	10	10	10	10	10	10	10	10	10	10	10	10	10	10	10	10	10	10	10	10	10	10	10	10	10	10	10	10	10	10
75/76	10	10	10	10	10	10	10	10	10	10	10	10	10	10	10	10	10	10	10	10	10	10	10	10	10	10	10	10	10	10	10	10	10	10	10	10	10	10
63/64	10	10	10	10	10	10	10	10	10	10	10	10	10	10	10	10	10	10	10	10	10	10	10	10	10	10	10	10	10	10	10	10	10	10	10	10	10	10
51/52	10	10	10	10	10	10	10	10	10	10	10	10	10	10	10	10	10	10	10	10	10	10	10	10	10	10	10	10	10	10	10	10	10	10	10	10	10	10
37/38	10	10	10	10	10	10	10	10	10	10	10	10	10	10	10	10	10	10	10	10	10	10	10	10	10	10	10	10	10	10	10	10	10	10	10	10	10	10
25/26	10	10	10	10	10	10	10	10	10	10	10	10	10	10	10	10	10	10	10	10	10	10	10	10	10	10	10	10	10	10	10	10	10	10	10	10	10	10
11/12	10	10	10	10	10	10	10	10	10	10	10	10	10	10	10	10	10	10	10	10	10	10	10	10	10	10	10	10	10	10	10	10	10	10	10	10	10	10
1 & 2 Bravo	10	10	10	10	10	10	10	10	10	10	10	10	10	10	10	10	10	10	10	10	10	10	10	10	10	10	10	10	10	10	10	10	10	10	10	10	10	10

NOTE: This is automated data that may/may not agree with the official BAM thinking that's found on the daily slides or special visibility report slides. This data should be used as a guide only

Houston Pilots Wind Chart



Example

Sustained wind 13 Knots

Gusts 18 Knots

Wind from the N

WS: 13
G:18
N

Time Knots	Fri 1pm	Fri 2pm	Fri 3pm	Fri 4pm	Fri 5pm	Fri 6pm	Fri 7pm	Fri 8pm	Fri 9pm	Fri 10pm	Fri 11pm	Sat 12am	Sat 1am	Sat 2am	Sat 3am	Sat 4am	Sat 5am	Sat 6am	Sat 7am	Sat 8am	Sat 9am	Sat 10am	Sat 11am	Sat 12pm	Sat 1pm	Sat 2pm	Sat 3pm	Sat 4pm	Sat 5pm	Sat 6pm	Sat 7pm	Sat 8pm	Sat 9pm	Sat 10pm	Sat 11pm	Sun 12am	
610 Bridge	5	5	5	5	6	8	8	7	5	4	3	2	1	1	1	1	1	1	2	3	4	4	4	4	5	5	6	6	6	7	8	7	6	5	4	4	
	7	8	8	8	9	10	10	9	8	7	5	4	2	2	1	2	1	2	3	4	5	6	6	7	7	8	9	9	10	10	9	8	7	6	5	4	4
Kinder 1	NE	ENE	ENE	E	ESE	ESE	SE	SSE	SSE	S	S	S	WSW	WNW	WNW	WNW	NNW	NNW	NNW	NNW	NNW	N	NNE	NNE	NNE	NE	ENE	E	ESE	SE	SSE	SSE	S	S	S	S	
	5	5	5	5	7	8	9	7	5	4	3	2	1	1	1	1	1	1	2	3	4	5	4	4	5	5	6	6	6	6	8	8	7	6	5	4	4
Greens Bayou	7	7	8	8	10	10	10	9	8	7	5	4	2	2	1	2	1	2	3	4	5	6	6	7	7	8	9	9	10	11	9	8	7	6	5	4	4
	NE	ENE	ENE	E	ESE	ESE	SE	SSE	SSE	S	S	S	WSW	NW	WNW	NW	NNW	NNW	NNW	NNW	NNW	N	NNE	NNE	NNE	NE	ENE	E	ESE	SE	SSE	SSE	S	S	S	S	
Shell Crude	4	5	5	6	7	8	7	5	4	4	2	2	1	1	1	1	1	2	3	4	5	4	4	5	5	6	6	7	8	7	6	5	4	4	4	4	
	NE	ENE	E	ESE	SE	SE	SSE	SSE	SSE	S	S	W	WNW	NW	NW	NW	NNW	NNW	NNW	NNW	NNW	N	NNE	NNE	NNE	NE	E	ESE	SE	SE	SSE	S	S	S	S	S	
Lynchburg Ferries	5	5	6	7	9	10	9	7	6	5	4	3	2	2	2	1	1	2	3	3	4	5	4	5	5	5	7	7	8	9	8	7	6	5	4	4	
	NE	ENE	ESE	SE	SE	SE	SSE	SSE	SSE	S	S	W	WNW	NW	NNW	NNW	NNW	NNW	NNW	NNW	NNW	N	ESE	NNE	NNE	NE	E	ESE	SE	SE	SSE	S	S	S	S	S	
Exxon 3	5	6	7	8	10	10	10	8	7	5	5	3	2	2	2	2	2	2	3	4	5	5	5	5	5	6	7	8	9	10	9	8	7	6	5	5	
	ENE	ESE	SE	SE	SE	SSE	SSE	SSE	SSE	SSE	SSE	SSE	WSW	NW	NNW	NNW	NNW	NNW	NNW	NNW	NNW	N	NNE	NNE	NE	ENE	ESE	SE	SE	SSE	SSE	S	S	S	S	S	
Morgans Point	6	7	8	10	11	12	11	9	8	6	6	4	4	3	3	2	3	3	4	5	6	6	5	5	6	7	9	10	10	11	10	9	9	7	6	6	
	E	SE	SE	SE	SE	SSE	SSE	SSE	SSE	SSE	SSE	SSE	SSW	WSW	NNW	NNW	NNW	NNW	NNW	N	N	N	ENE	NE	ENE	ESE	SE	SE	SSE	SSE	SSE	S	S	S	S	S	
75/76	6	7	9	11	13	13	13	11	10	8	7	5	5	4	4	3	4	4	6	7	7	7	6	5	6	7	10	11	12	13	12	11	10	9	8	8	
	E	SE	SE	SE	SE	SSE	SSE	SSE	SSE	SSE	SSE	SSE	SSE	SSW	W	NW	NW	NNW	NNW	NNW	N	N	NNW	NNE	ENE	E	SE	SE	SE	SE	SSE	SSE	SSE	SSE	S	S	S
63/64	5	6	9	11	13	13	12	11	9	8	7	5	5	4	3	3	4	4	6	7	8	7	6	5	5	7	9	11	12	12	12	11	10	9	8	8	
	E	ESE	SE	SE	SE	SE	SSE	SSE	SSE	SSE	SSE	SSE	SSE	S	SW	WNW	NW	NNW	NNW	NNW	N	W	NNE	NE	ENE	SE	SE	SE	SE	SE	SSE	SSE	SSE	S	S	S	
51/52	5	6	8	11	12	11	10	8	7	7	5	4	4	3	2	3	4	5	7	8	7	6	5	5	6	8	10	11	11	11	10	9	8	8	7		
	E	ESE	SE	SE	SE	SE	SSE	SSE	SSE	SSE	SSE	SSE	SSE	SSE	S	W	NW	NNW	NNW	NNW	N	N	SE	N	NNE	ENE	SE	SE	SE	SE	SE	SSE	SSE	SSE	SSE	S	S
37/38	6	6	8	10	10	10	10	8	7	6	5	4	4	3	2	2	3	3	5	6	8	8	7	6	6	8	9	10	10	10	9	8	7	8	7		
	E	ESE	SE	SE	SE	SE	SSE	SSE	SSE	SSE	SSE	SSE	SSE	SSE	SSE	SSE	SSE	SSE	SSE	SSE	SSE	SSE	ESE	N	NNE	NE	ESE	SE	SE	SE	SE	SSE	SSE	SSE	SSE	S	S
25/26	7	7	8	9	9	9	8	7	6	6	5	4	4	3	3	2	2	3	4	6	7	8	7	6	7	8	9	9	9	9	8	7	7	7	6		
	E	E	ESE	SE	SE	SE	SSE	SSE	SSE	SSE	SSE	SSE	SSE	SSE	SSE	SSE	SSE	SSE	SSE	SSE	SSE	SSE	S	NNE	NE	ESE	SE	SE	SE	SE	SSE	SSE	SSE	SSE	SSE	S	S
11/12	7	7	8	9	8	8	7	7	6	6	5	4	4	3	2	2	3	4	6	7	8	7	6	7	8	8	8	8	8	8	7	7	7	7	7		
	E	E	ESE	SE	SE	SE	SE	SSE	SSE	SSE	SE	SE	SE	SE	SE	SSW	WSW	N	NW	WNW	SSE	NNE	NE	NE	ESE	SE	SE	SE	SE	SE	SSE	SSE	SSE	SSE	SSE	S	
1 & 2 Bravo	8	7	8	8	9	9	9	8	7	7	6	6	5	4	3	2	3	5	7	8	8	8	7	6	7	8	8	8	8	8	8	8	8	8	8		
	E	E	ESE	ESE	SE	SE	SE	SE	SE	SE	SE	SE	SE	SE	SE	ESE	NNE	NW	ESE	NE	NNE	NNE	NE	NE	ESE	ESE	ESE	ESE	ESE	ESE	ESE	ESE	ESE	ESE	ESE		

NOTE: This is automated data that may/may not agree with the official BAM thinking that's found on the daily slides. This data should be used as a guide only

Houston Pilots: Fri. 9/1/2023



Forecast Discussion

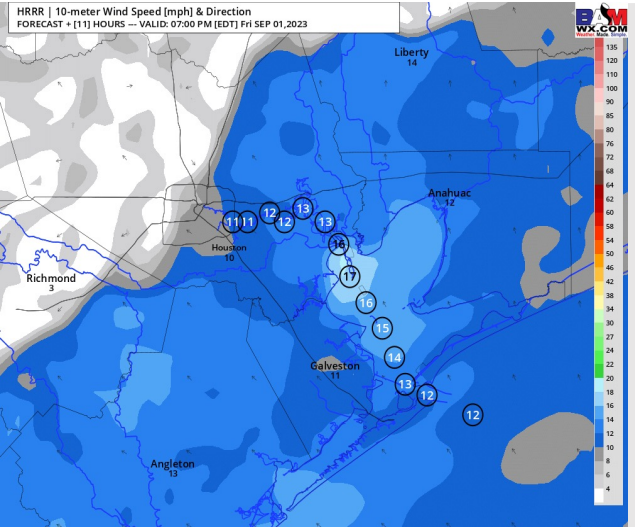
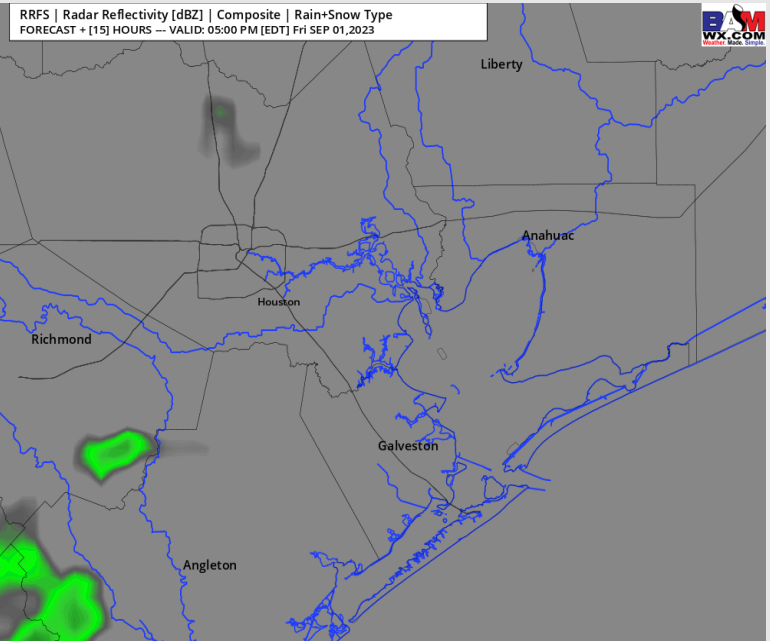
Precip: Anticipating mostly dry conditions throughout the day today, aside for a 10-20% chance for a few hit/miss showers from 4-8 PM.

Wind: Winds out of the ENE will shift out of the SSE by 3 PM for the remainder of the afternoon. **N of Morgan's Point:** 2 - 7 kts expected through 3 PM, increasing to 6 - 11 kts after 3 PM. **S of Morgan's Point:** 2 - 7 kts through 3 PM, increasing to 9-14 kts after that time and remaining at that clip for the rest of the day.

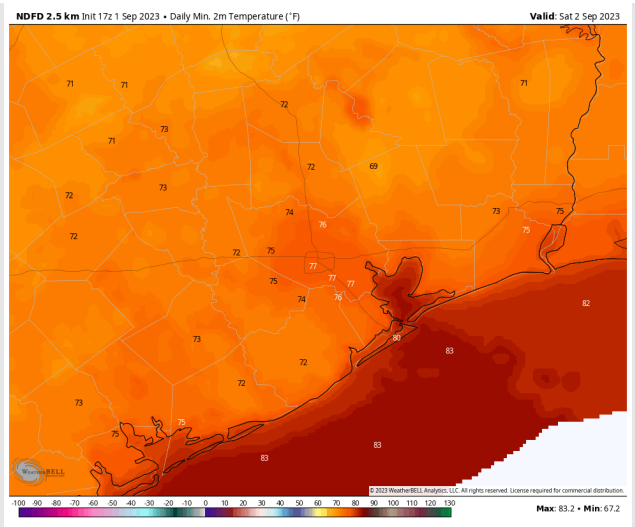
Low Temps: **S of Morgan's Point:** Low 80s F. **N of Morgan's Point:** Mid/Upper 70s F.

Visibility: Not anticipating any fog issues at this time.

Precip Image: 5 PM CT



Wind Speed:
6 PM CT



Low Temps
SAT AM

Houston Pilots: Sat. 9/2/2023



Forecast Discussion

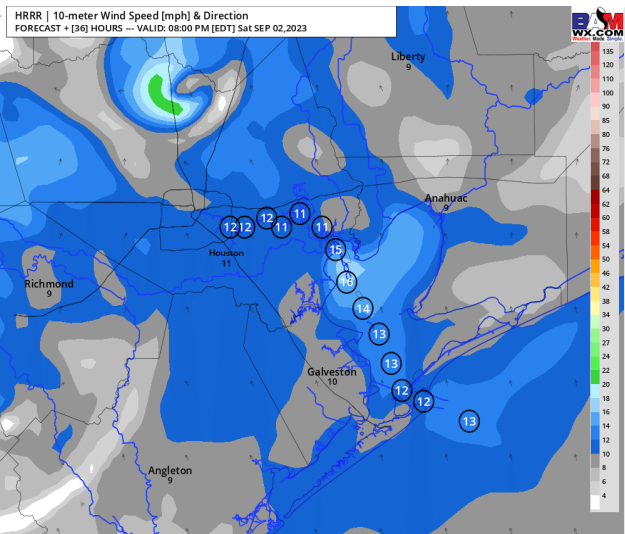
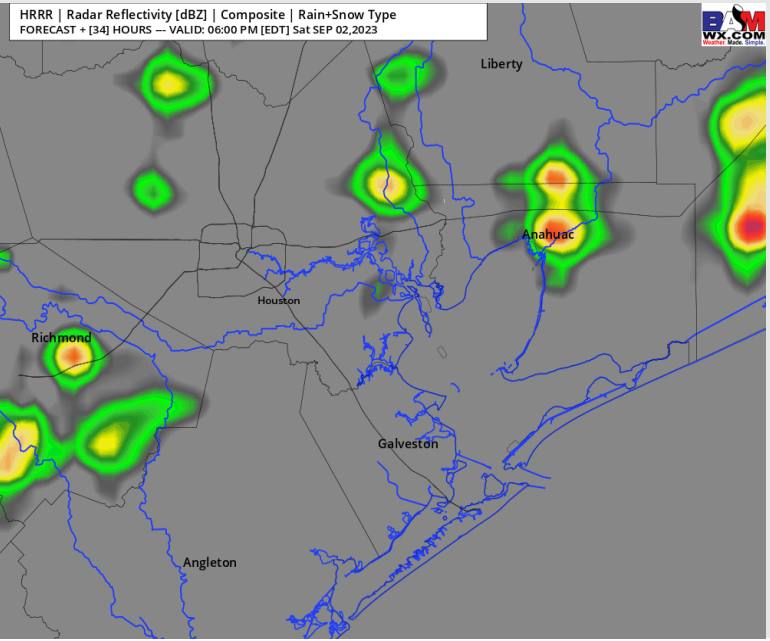
Precip: Favoring a low-end risk (20-30%) for hit/miss showers between 4 – 9 PM.

Wind: Winds out of the SSE will shift out of the NNE by 8 AM. Winds will then shift back out of the SSE by 5 PM. **N of Morgan's Point:** 1-6 kts until 2 PM, increasing to 5-10 for the remainder of the evening. **S of Morgan's Point:** 1-6 kts until 3 PM, increasing to 6 -11 for the remainder of the day. **Gusts of 20-25 kts will be possible under the strongest cells Saturday.**

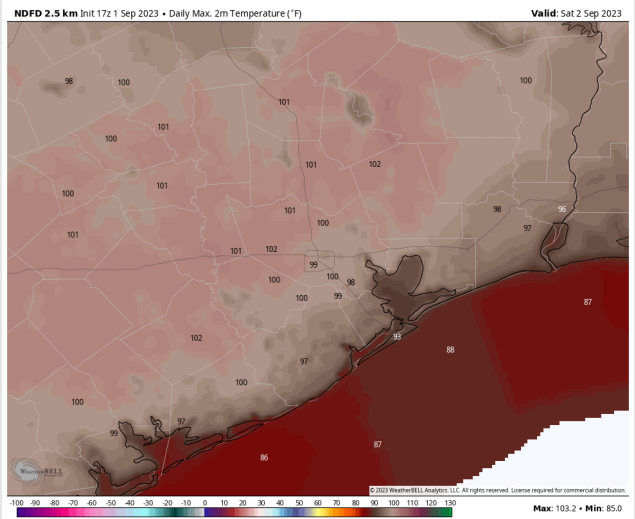
High Temps: **S of Morgan's Point:** Low 90s F. **N of Morgan's Point:** Upper 90s / near 100 F.

Visibility: No visibility issues expected Wednesday.

Precip Image: 5 PM CT



**Wind Speed:
7 PM CT**



**High Temps
Saturday**

Houston Pilots: Sun. 9/3/2023



Forecast Discussion

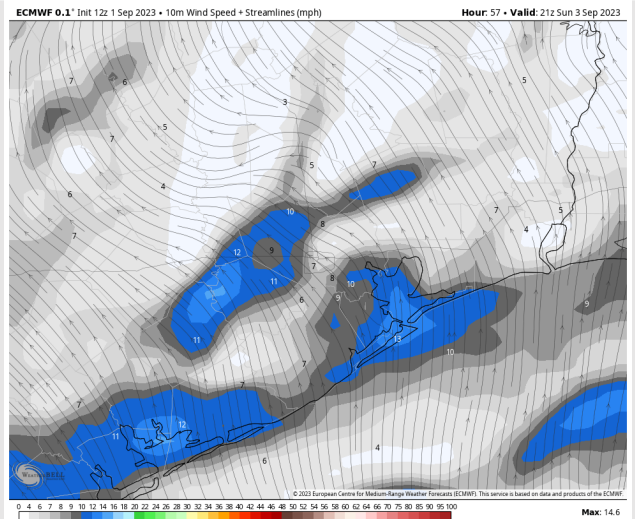
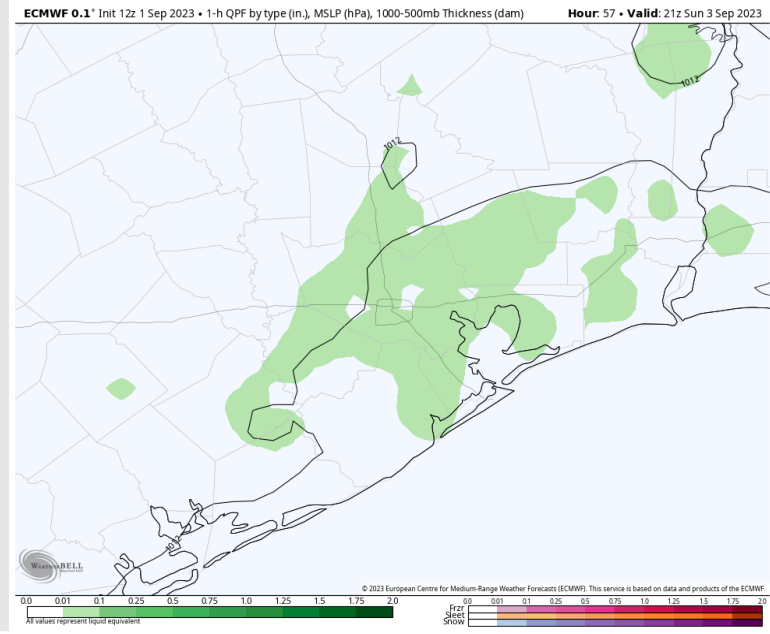
Precip: Favoring a 20-30% chance for scattered showers/storms from 8 AM – 7 PM local time. After 7 PM, favoring dry conditions for the rest of the day. The Boarding Station could see scattered showers as early as 3 AM (20% chance).

Wind: Winds from the SSE will become variable by 6 AM and will remain that way through 12 PM. After 12 PM, favoring winds to settle back out of the SSE for the rest of the day. **N of Morgan's Point:** Winds will remain at 3-7kts throughout the day with a slight uptick to 5 - 10 kts towards 6 PM. **S of Morgan's Point:** 8-13 kts until 5AM before decreasing to 3-7 kts through 4 PM. After 4 PM, favoring winds to slightly increase to 7-12 kts for the rest of the day.

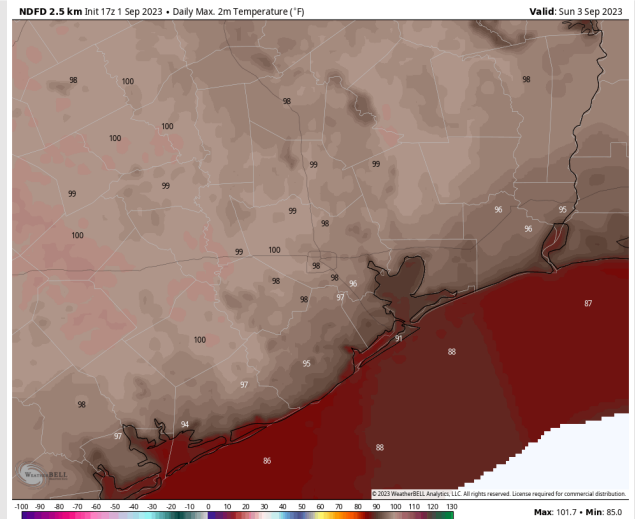
High Temps: **S of Morgan's Point:** Low/Mid 90s F. **N of Morgan's Point:** Upper 90s F.

Visibility: No Visibility concerns at this time.

Precip Image: 4 PM CT

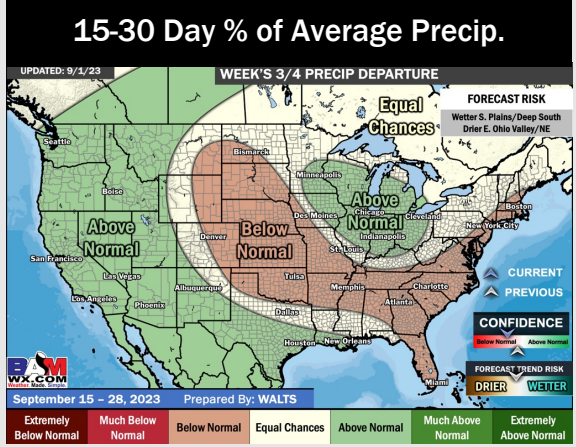
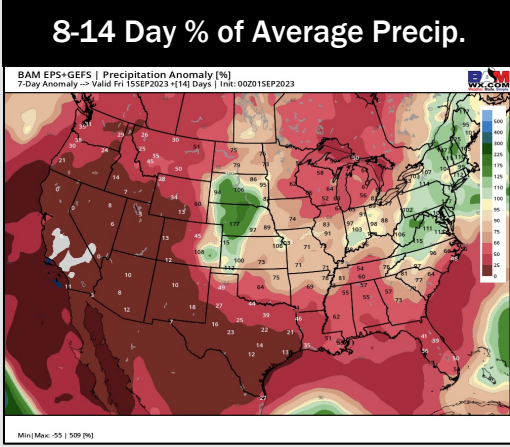
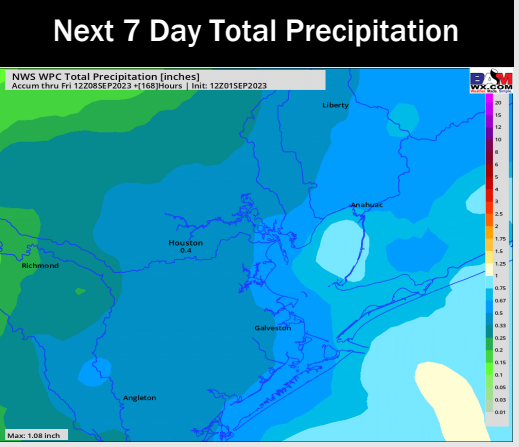
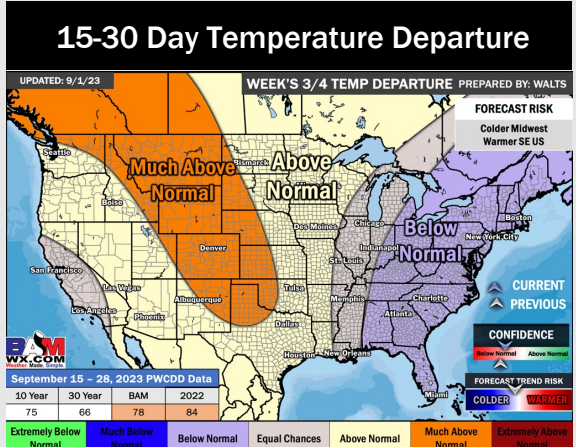
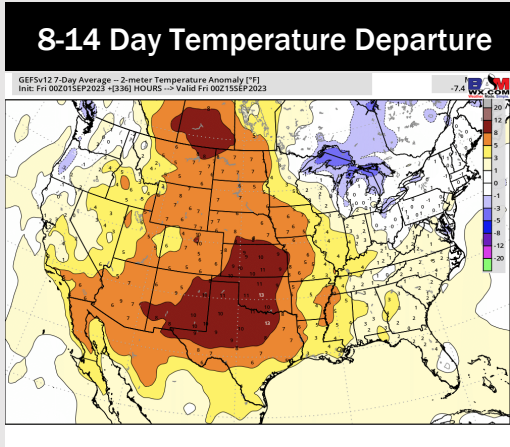
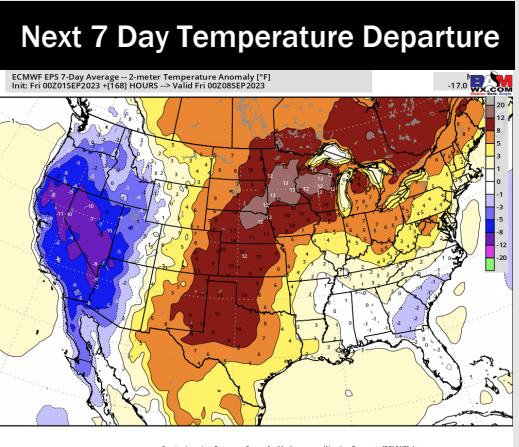


**Wind Speed:
4 PM CT**



**High Temps
Sunday**

Houston Pilots: 9/1/23



- Minor rain chances return this evening with better chances moving in SAT -TUE week. Expecting temperatures to continue to remain above normal.
- Expecting below normal precipitation chances and above normal temperatures for the week 2 timeframe.
- Above normal temperatures and above normal chances for precipitation are favored in the weeks 3/4 timeframe.