

Houston Pilots Forecast Package



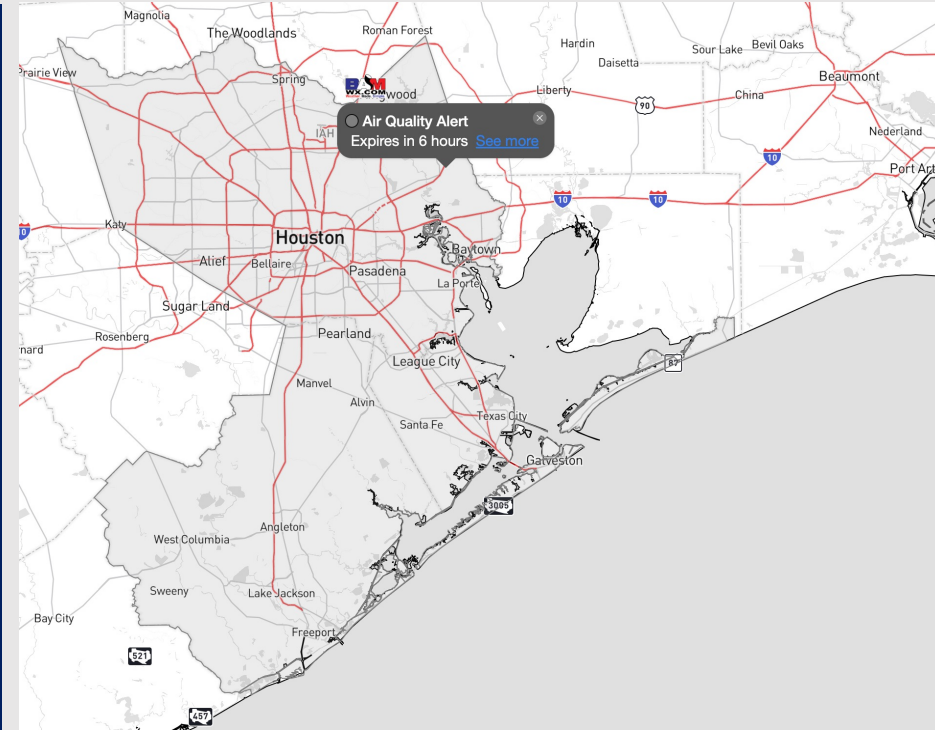
Updated: 2:00 PM CT

Tuesday, September 12, 2023

Forecaster: John Kemper

Weather Headlines

- Not anticipating tropical development in the Gulf of Mexico over the next 7-10 days. Monitoring Hurricane Lee as it approaches the East coast. This storm will not impact that Gulf.
- Mostly dry to start the week, but scattered shower/storm chances will gradually increase beginning tomorrow through the end of the week.
- Not anticipating any visibility concerns over the next few days.



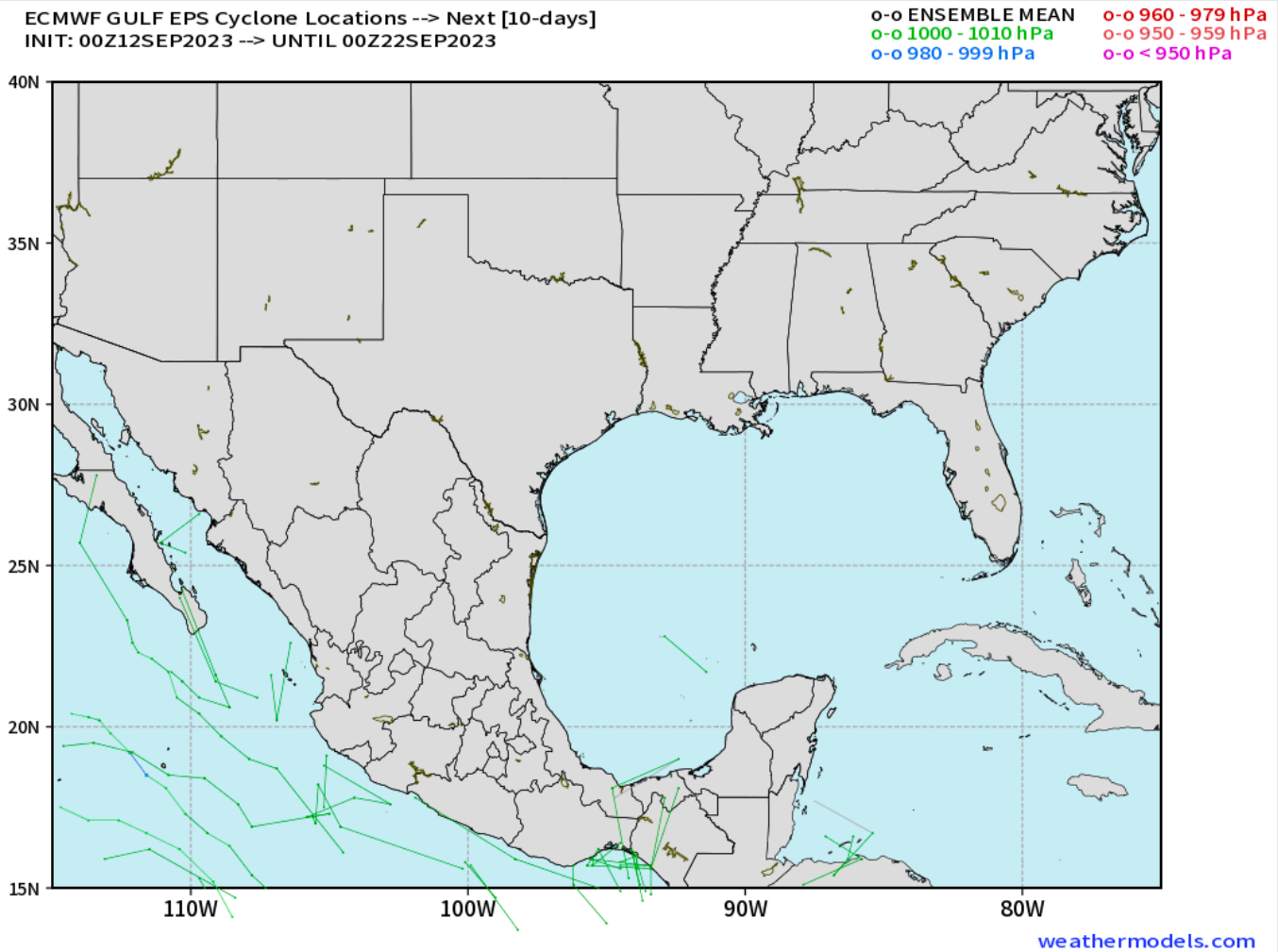
Radar/NWS Alerts: 1:30 PM CT



As always, please do not hesitate to reach out to us with any forecast questions via the chat option on the Weather Porthole or our on-call number, **(317)-560-8122** press **1** for forecast questions.

Houston Pilots Tropical Update

European Model Next 10 Days Tropical Tracks



Not anticipating tropical development in the Gulf of Mexico over the next 7-10 days.

Currently monitoring Hurricane Lee, which may impact parts of New England next weekend.

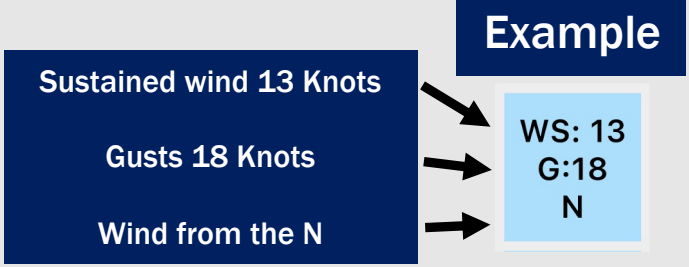
Houston Pilots Visibility Chart (miles)



Time	Tue 1pm	Tue 2pm	Tue 3pm	Tue 4pm	Tue 5pm	Tue 6pm	Tue 7pm	Tue 8pm	Tue 9pm	Tue 10pm	Tue 11pm	Wed 12am	Wed 1am	Wed 2am	Wed 3am	Wed 4am	Wed 5am	Wed 6am	Wed 7am	Wed 8am	Wed 9am	Wed 10am	Wed 11am	Wed 12pm	Wed 1pm	Wed 2pm	Wed 3pm	Wed 4pm	Wed 5pm	Wed 6pm	Wed 7pm	Wed 8pm	Wed 9pm	Wed 10pm	Wed 11pm	Thu 12am
610 Bridge	10	10	10	10	10	10	10	10	10	10	10	10	10	10	10	10	10	10	10	10	10	10	10	10	10	10	10	10	10	10	10	10	10	10		
Kinder 1	10	10	10	10	10	10	10	10	10	10	10	10	10	10	10	10	10	10	10	10	10	10	10	10	10	10	10	10	10	10	10	10	10	10		
Greens Bayou	10	10	10	10	10	10	10	10	10	10	10	10	10	10	10	10	10	10	10	10	10	10	10	10	10	10	10	10	10	10	10	10	10	10		
Shell Crude	10	10	10	10	10	10	10	10	10	10	10	10	10	10	10	10	10	10	10	10	10	10	10	10	10	10	10	10	10	10	10	10	10	10		
Lynchburg Ferries	10	10	10	10	10	10	10	10	10	10	10	10	10	10	10	10	10	10	10	10	10	10	10	10	10	10	10	10	10	10	10	10	10	10		
Exxon 3	10	10	10	10	10	10	10	10	10	10	10	10	10	10	10	10	10	10	10	10	10	10	10	10	10	10	10	10	10	10	10	10	10	10		
Morgans Point	10	10	10	10	10	10	10	10	10	10	10	10	10	10	10	10	10	10	10	10	10	10	10	10	10	10	10	10	10	10	10	10	10	10		
75/76	10	10	10	10	10	10	10	10	10	10	10	10	10	10	10	10	10	10	10	10	10	10	10	10	10	10	10	10	10	10	10	10	10	10		
63/64	10	10	10	10	10	10	10	10	10	10	10	10	10	10	10	10	10	10	10	10	10	10	10	10	10	10	10	10	10	10	10	10	10	10		
51/52	10	10	10	10	10	10	10	10	10	10	10	10	10	10	10	10	10	10	10	10	10	10	10	10	10	10	10	10	10	10	10	10	10	10		
37/38	10	10	10	10	10	10	10	10	10	10	10	10	10	10	10	10	10	10	10	10	10	10	10	10	10	10	10	10	10	10	10	10	10	10		
25/26	10	10	10	10	10	10	10	10	10	10	10	10	10	10	10	10	10	10	10	10	10	10	10	10	10	10	10	10	10	10	10	10	10	10		
11/12	10	10	10	10	10	10	10	10	10	10	10	10	10	10	10	10	10	10	10	10	10	10	10	10	10	10	10	10	10	10	10	10	10	10		
1 & 2 Bravo	10	10	10	10	10	10	10	10	10	10	10	10	10	10	10	10	10	10	10	10	10	10	10	10	10	10	10	10	10	10	10	10	10	10		

NOTE: This is automated data that may/may not agree with the official BAM thinking that's found on the daily slides or special visibility report slides. This data should be used as a guide only

Houston Pilots Wind Chart



Time Knots	Tue 1pm	Tue 2pm	Tue 3pm	Tue 4pm	Tue 5pm	Tue 6pm	Tue 7pm	Tue 8pm	Tue 9pm	Tue 10pm	Tue 11pm	Wed 12am	Wed 1am	Wed 2am	Wed 3am	Wed 4am	Wed 5am	Wed 6am	Wed 7am	Wed 8am	Wed 9am	Wed 10am	Wed 11am	Wed 12pm	Wed 1pm	Wed 2pm	Wed 3pm	Wed 4pm	Wed 5pm	Wed 6pm	Wed 7pm	Wed 8pm	Wed 9pm	Wed 10pm	Wed 11pm	Thu 12am				
610 Bridge	2 W	3 W	4 WSW	4 E	5 ESE	7 SE	8 SSE	7 SSE	6 S	6 S	5 SSW	4 SSW	4 SW	4 SW	3 SW	3 WSW	2 WSW	2 SW	2 WSW	3 WSW	4 W	4 W	4 W	4 WNW	4 NW	4 NNW	5 SW	5 ENE	6 ESE	6 ESE	6 ESE	5 ESE	5 ESE	5 ESE	4 SE	3 SSW				
Kinder 1	4 W	4 WSW	6 SSW	6 ESE	8 SE	9 SE	10 SSE	10 SSE	9 S	9 S	8 SSW	7 SSW	6 SW	6 SW	5 WSW	5 WSW	4 SW	3 SW	3 WSW	4 WSW	5 W	7 W	6 W	5 W	6 WNW	7 NW	8 NNW	8 NNW	9 SW	10 SE	10 ENE	9 ESE	8 ESE	7 ESE	7 ESE	5 SE	5 SSW			
Greens Bayou	2 WSW	3 SSW	4 SSE	4 SE	5 SE	7 SSE	8 SSE	7 SSE	6 S	6 S	5 SSW	4 SSW	4 SW	4 SW	3 WSW	3 WSW	2 SW	2 SW	2 WSW	2 WSW	4 WSW	4 W	4 W	4 WNW	4 NNW	5 NW	6 SSE	6 ENE	6 ESE	6 ESE	5 ESE	5 ESE	5 ESE	4 SSE	4 SSW					
Shell Crude	4 WSW	4 SE	6 SE	7 SE	8 SSE	9 SSE	10 SSE	9 S	9 S	8 SSW	7 SSW	6 SW	6 SW	5 WSW	5 WSW	4 SW	3 SW	3 WSW	4 WSW	5 W	7 W	6 W	5 W	5 WNW	7 NW	8 NNW	9 NNW	10 SW	10 SE	9 ESE	8 ESE	7 ESE	7 ESE	6 SE	5 SSE	5 SSW				
Lynchburg Ferries	3 WSW	3 SSE	4 SSE	5 SE	6 SE	8 SSE	9 SSE	8 SSE	7 S	6 S	5 SSW	4 SSW	4 SW	4 SW	3 WSW	3 WSW	2 SW	2 SW	2 WSW	3 WSW	4 W	5 W	4 W	4 WNW	4 NW	5 W	6 SE	6 ENE	7 ESE	7 ESE	7 ESE	6 ESE	5 ESE	5 ESE	5 ESE	4 SE	4 SSW			
Exxon 3	3 SW	4 SSE	5 SSE	7 SSE	8 SSE	9 SSE	10 SSE	11 S	11 S	10 SSW	8 SSW	7 SSW	6 SW	5 SW	4 WSW	4 WSW	3 WSW	3 WSW	3 WSW	4 WSW	5 W	6 W	6 W	5 WSW	6 WSW	6 W	7 W	7 W	7 W	7 W	7 W	6 W	6 W	5 W	5 W	5 W	4 SSW	4 SSW		
Morgans Point	6 S	5 SSE	7 SSE	8 SSE	10 SSE	11 SSE	11 SSE	12 S	12 S	10 SSW	9 SSW	8 SW	7 SW	6 WSW	6 WSW	5 WSW	5 WSW	4 WSW	4 WSW	4 WSW	5 W	6 W	6 W	6 W	6 SSW	7 SSE	8 SSE	9 SSE	10 SSE	11 SSE	11 SSE	10 SSE	9 SSE	8 SSE	7 SSE	6 SSE	6 SSE	5 SSE	5 SSW	
75/76	5 SE	6 SE	8 SE	9 SE	12 SSE	13 SSE	13 SSE	12 S	11 S	11 SSW	9 SSW	8 SW	8 SW	7 WSW	7 WSW	6 WSW	6 W	6 W	6 W	6 W	7 W	7 W	7 W	6 SE	6 ESE	7 SSE	8 SSE	9 SSE	10 SSE	11 SSE	12 SSE	12 SSE	11 SSE	10 SSE	9 SSE	8 SSE	8 SSE	7 SSE	7 SSW	
63/64	7 E	8 ESE	9 SE	10 SSE	12 SSE	14 SSE	14 SSE	13 S	10 S	9 SSW	8 SSW	7 SSW	6 SW	6 SW	5 WSW	5 WSW	4 W	4 W	4 W	5 W	6 W	7 W	7 W	6 WNW	6 WNW	6 WNW	7 ENE	8 ESE	9 SSE	10 SSE	11 SSE	12 SSE	11 SSE	11 SSE	8 SSE	8 SSE	8 SSE	5 SSE	5 SSW	
51/52	4 E	5 SE	6 SE	8 SSE	10 SSE	11 SSE	12 SSE	11 S	10 S	9 SSW	8 SSW	8 SW	7 SW	6 WSW	6 WSW	5 W	5 W	5 W	5 W	6 W	6 W	6 W	5 WNW	6 WNW	6 WNW	6 ENE	7 ESE	8 SSE	9 SSE	10 SSE	11 SSE	11 SSE	10 SSE	9 SSE	8 SSE	7 SSE	6 SSE	6 SSE	5 SSE	5 SSW
37/38	5 E	4 ESE	6 SE	7 SSE	9 SSE	10 SSE	11 SSE	10 S	9 S	8 SSW	7 SSW	6 SSW	6 SW	5 SW	5 WSW	5 WSW	4 W	4 W	4 W	5 W	6 W	6 W	6 W	5 WNW	6 WNW	6 WNW	7 NW	8 ESE	9 SSE	10 SSE	11 SSE	10 SSE	9 SSE	8 SSE	7 SSE	6 SSE	6 SSE	5 SSE	5 SSW	
25/26	6 E	5 SE	6 SE	7 SSE	9 SSE	10 SSE	10 SSE	9 S	8 S	7 SSW	6 SSW	6 SSW	5 SW	5 SW	4 WSW	4 WSW	4 W	4 W	4 W	5 W	6 W	6 W	5 WNW	6 WNW	6 WNW	7 SE	8 ESE	9 SSE	10 SSE	11 SSE	10 SSE	9 SSE	8 SSE	7 SSE	6 SSE	6 SSE	5 SSE	5 SSW		
11/12	4 E	5 SE	6 SSE	7 SSE	8 SSE	9 SSE	8 SSE	8 S	7 S	6 SSW	5 SSW	4 SSW	4 SW	3 SW	3 WSW	3 WSW	2 W	2 W	2 W	3 W	4 W	5 W	5 W	4 WNW	5 WNW	5 WNW	6 SE	7 SSE	8 SSE	9 SSE	10 SSE	11 SSE	10 SSE	9 SSE	8 SSE	7 SSE	6 SSE	5 SSE	5 SSW	
1 & 2 Bravo	5 E	5 SE	6 SSE	7 SSE	8 SSE	9 SSE	9 SSE	9 S	9 S	8 SSW	8 SSW	8 SSW	7 SW	7 SW	6 WSW	6 WSW	5 W	5 W	5 W	6 W	6 W	6 W	5 WNW	6 WNW	6 WNW	6 WNW	7 SE	8 SSE	9 SSE	10 SSE	10 SSE	9 SSE	8 SSE	7 SSE	7 SSE	6 SSE	5 SSE	5 SSW		

NOTE: This is automated data that may/may not agree with the official BAM thinking that's found on the daily slides. This data should be used as a guide only

Forecast Discussion

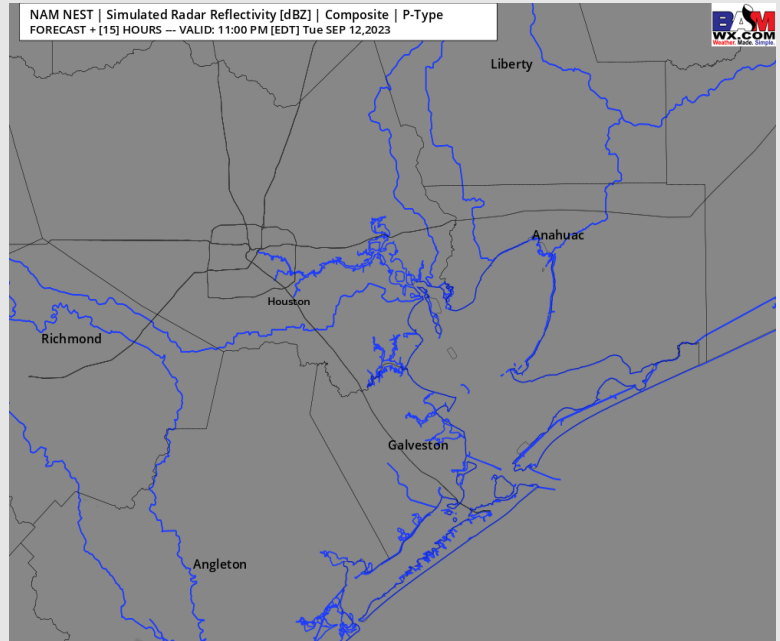
Precip: Favoring dry conditions throughout the day today, with low end chances of a few sprinkles from 10PM-12AM (chances of less than 10%), as data continues to trend drier.

Wind: Winds out of the SE/SSE favored for the remainder of the evening.
N of Morgan's Point: 2-6 kts throughout the afternoon, increasing to 4-9 kts after 6 PM. **S of Morgan's Point:** 3-8 kts through 6PM before increasing to 10-15 kts for the rest of the evening.

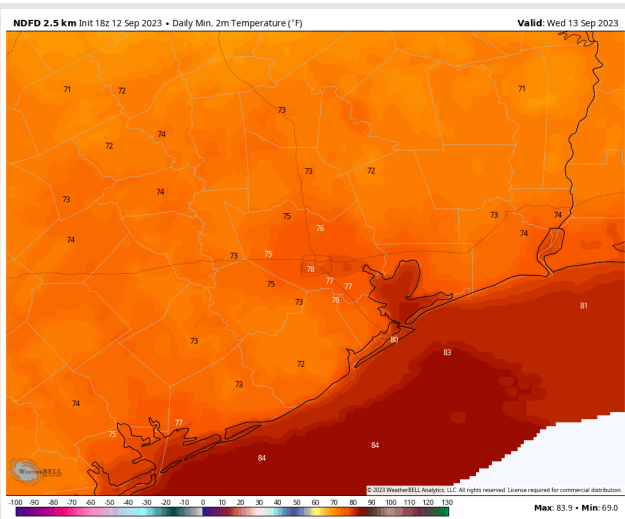
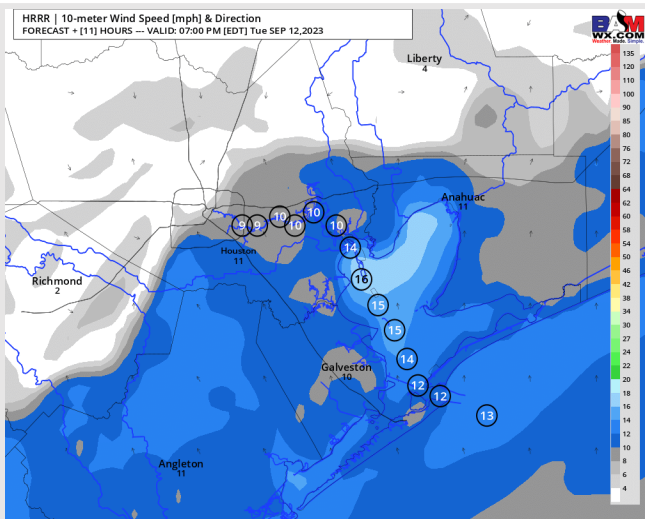
Low Temps: **S of Morgan's Point:** Lower 80s. **N of Morgan's Point:** Mid/Upper 70s F.

Visibility: Not anticipating any fog issues at this time.

Precip Image: 10 PM CT



Wind Speed:
6 PM CT



Low Temps
Wed AM

Forecast Discussion

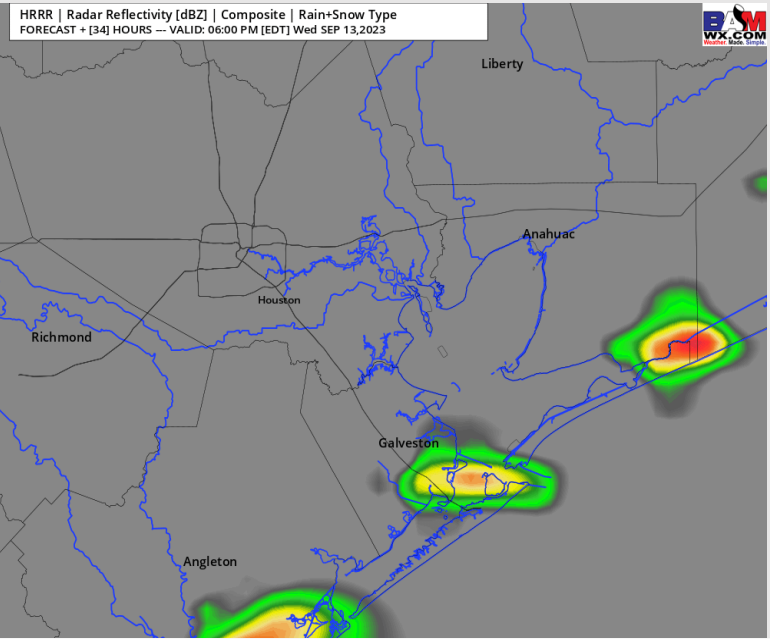
Precip: Favoring dry conditions for the morning, then a 40-50% chance for showers/storms from 3-9 PM. Best coverage will come during the 4-7 PM timeframe. **Wind gusts of 50-60 MPH and pockets of small hail will be possible under any stronger cell on Wednesday, but favoring this risk to be scattered.**

Wind: Winds will start out of the SW before becoming variable by 4 AM with favorability out of the WSW through 6 PM. Then after 6 PM, favoring winds to shift to out of the ESE for the rest of the day. **S of Morgan's Point:** 5-10 kts through 4 AM, before decreasing to 2-7 kts until 3 PM. After 3 PM, winds will increase back to 5-10 kts and remain that way for the rest of the day. **N of Morgan's Point:** 2-6 kts throughout the day aside for a brief increase to 4-8 kts from 4-10 PM.

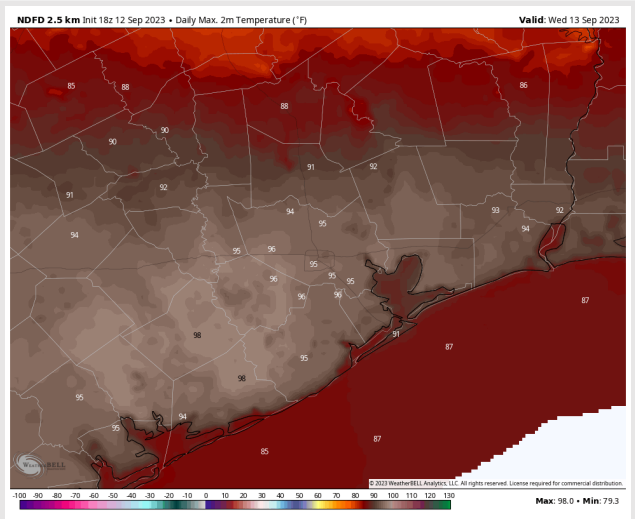
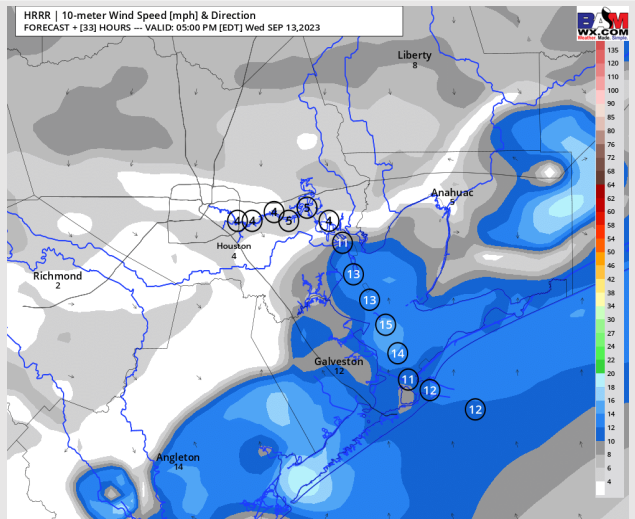
High Temps: **S of Morgan's Point:** Mid 80s F **N of Morgan's Point:** Mid 90s F

Visibility: No visibility issues expected.

Precip Image: 5 PM CT



**Wind Speed:
4 PM CT**



**High Temps
Wednesday**

Houston Pilots: Thu. 9/14/2023



Forecast Discussion

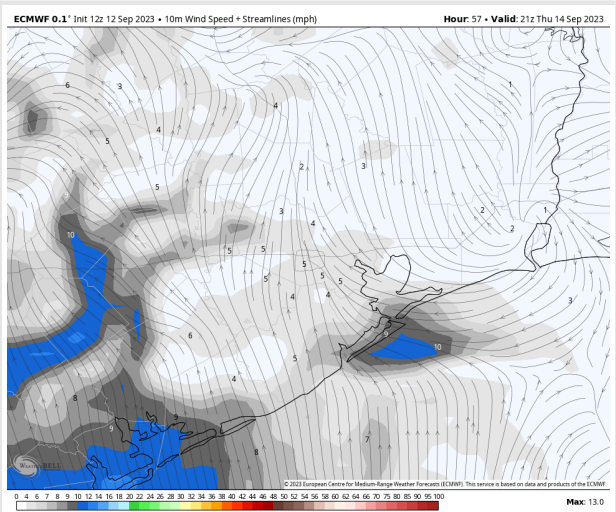
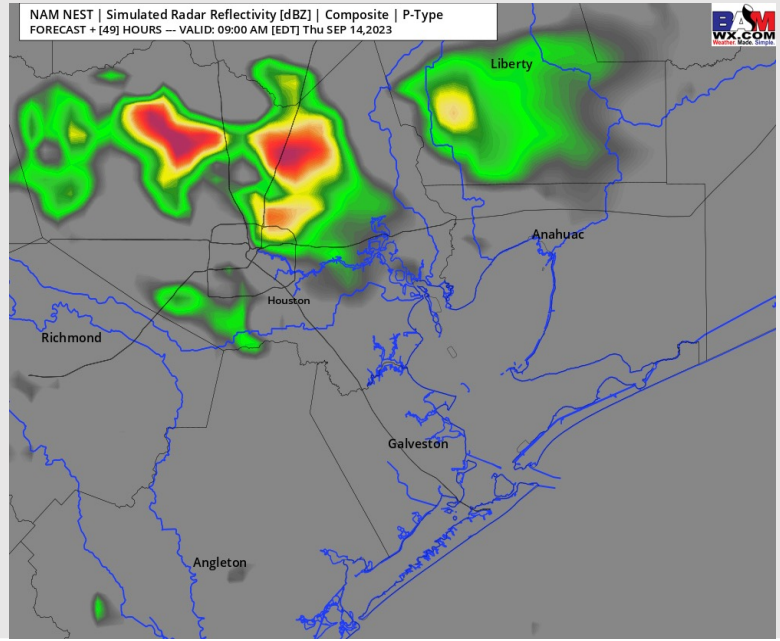
Precip: 30-40% chances for hit/miss showers/storms move into the area from 9 AM - 12 PM. After 12 PM, favoring drier conditions to move back into the area before 10-20% chances for isolated pop-ups move back into the area from 4-6 PM. After 6 PM, favoring dry conditions for the rest of the day.

Wind: Winds will be out of the E before shifting to be out of the ESE by 4 PM and remaining that way for the rest of the day. **S of Morgan's Point:** 4 - 9 kts throughout the day Thursday. **N of Morgan's Point:** will be 2 - 7 kts throughout the day Thursday.

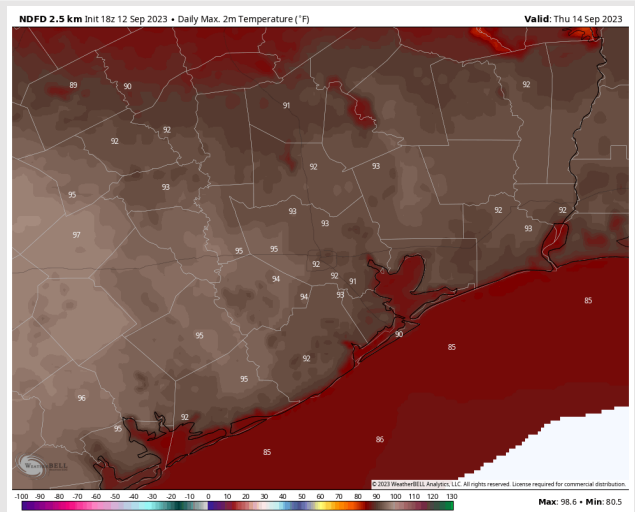
High Temps: **S of Morgan's Point:** Mid 80s F. **N of Morgan's Point:** Mid/Upper 90s F.

Visibility: No visibility concerns at this time.

Precip Image: 8 AM CT

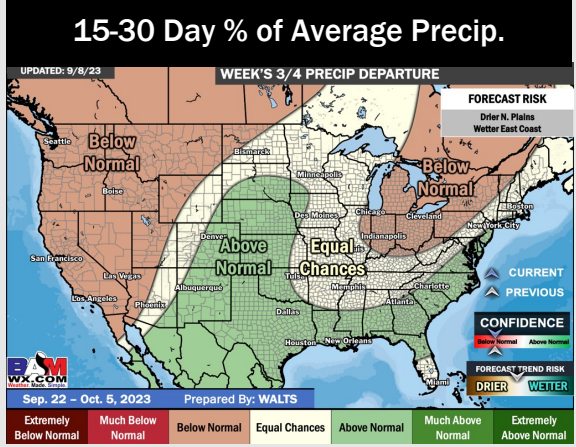
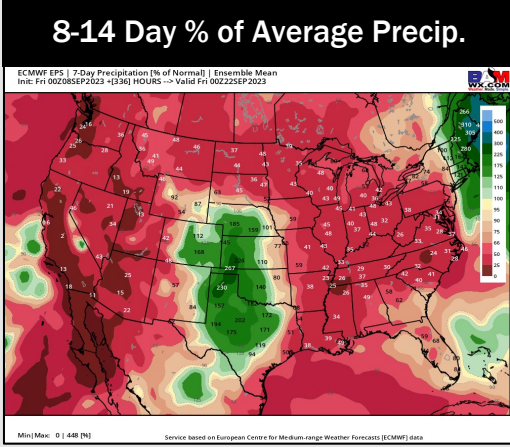
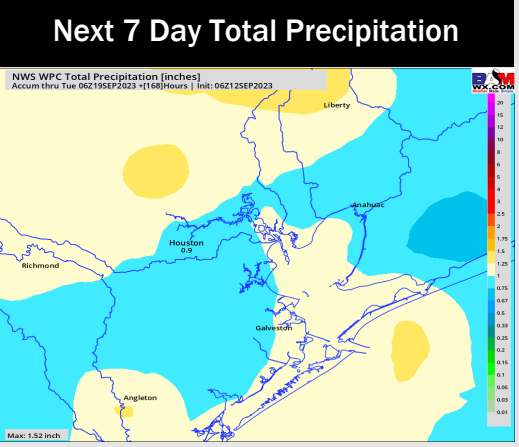
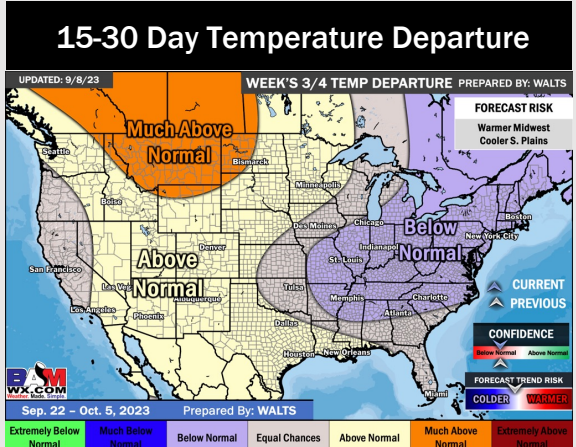
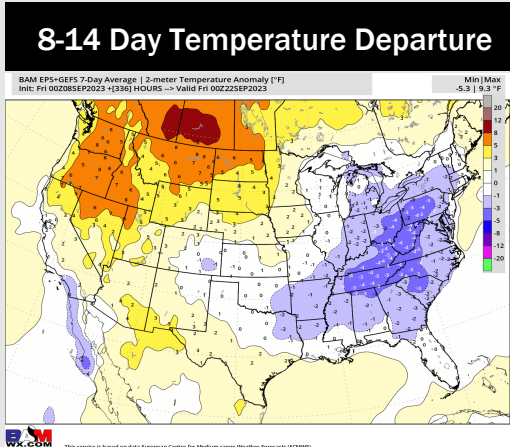
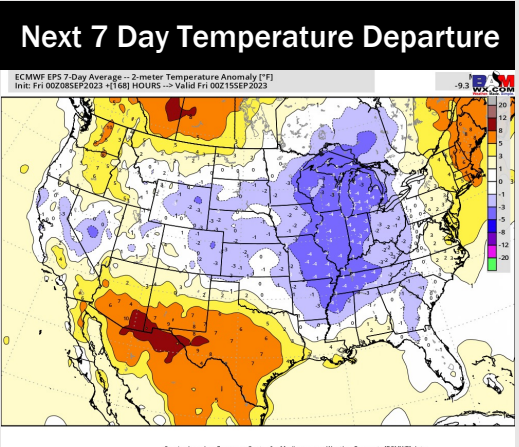


**Wind Speed:
8 PM CT**



**High Temps
Thursday**

Houston Pilots: 9/12/23



- Rain chances start gradually increasing as we get later into the week, however these will be scattered in nature. Expecting temperatures to continue to remain slightly above normal.
- Expecting below normal precipitation chances and slightly above normal temperatures for the week 2 timeframe.
- Above normal temperatures and above normal chances for precipitation are favored in the weeks 3/4 timeframe.