

Houston Pilots Forecast Package



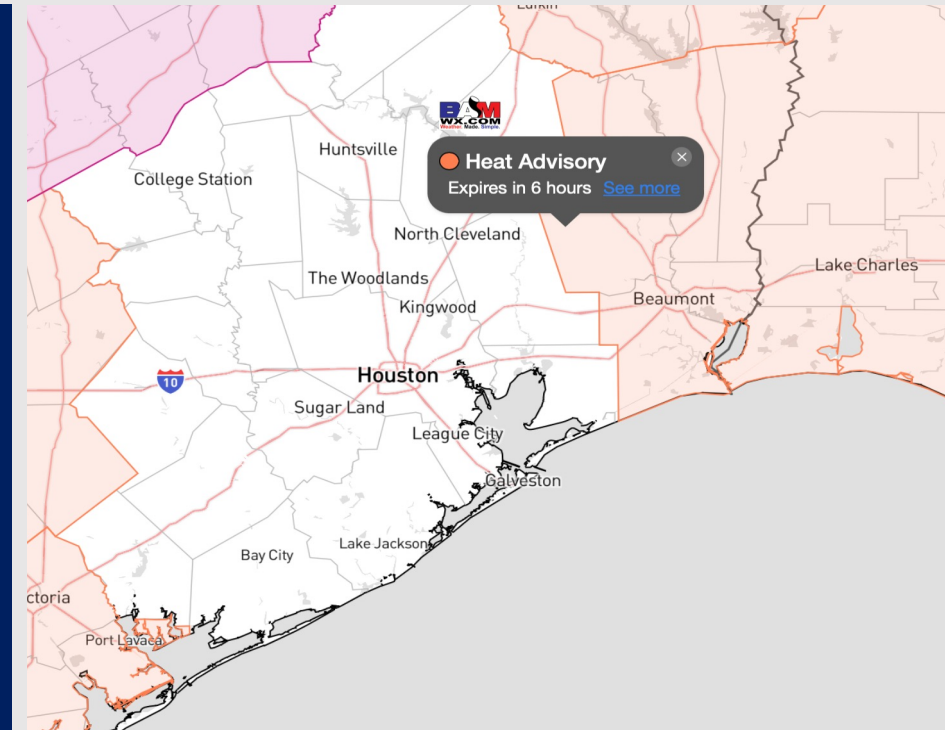
Updated: 1:45 PM CT

Thursday, September 7, 2023

Forecaster: Tyler Riggles

Weather Headlines

- Not anticipating tropical development in the Gulf of Mexico over the next 7-10 days. Monitoring Hurricane Lee as it approaches the East coast. Not anticipating this storm to impact the Gulf.
- Low-end scattered showers/storms chances will be at play over the next 72 hours.
- Not anticipating any visibility concerns over the next few days.



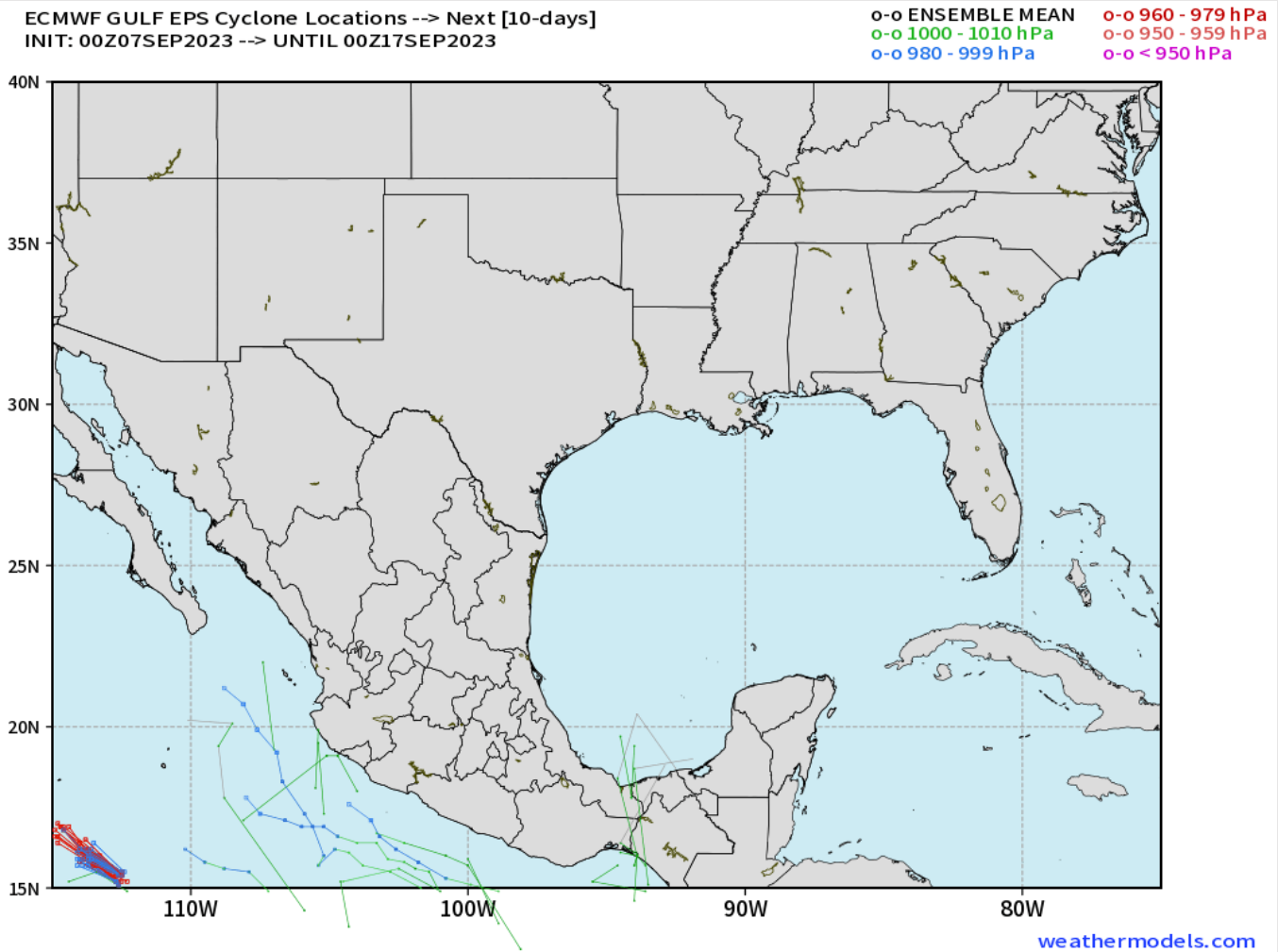
Radar/NWS Alerts: 1:45 PM CT



As always, please do not hesitate to reach out to us with any forecast questions via the chat option on the Weather Porthole or our on-call number, **(317)-560-8122** press 1 for forecast questions.

Houston Pilots Tropical Update

European Model Next 10 Days Tropical Tracks



Not anticipating tropical development in the Gulf of Mexico over the next 7-10 days.

Currently monitoring Hurricane Lee 100s of miles east of the Lesser Antilles. Not favoring this to impact the Gulf.

Houston Pilots Wind Chart



Forecast Confidence



Example

Sustained wind 13 Knots
Gusts 18 Knots
Wind from the N

WS: 13
G:18
N

Time Knots	Thu 12pm	Thu 1pm	Thu 2pm	Thu 3pm	Thu 4pm	Thu 5pm	Thu 6pm	Thu 7pm	Thu 8pm	Thu 9pm	Thu 10pm	Thu 11pm	Fri 12am	Fri 1am	Fri 2am	Fri 3am	Fri 4am	Fri 5am	Fri 6am	Fri 7am	Fri 8am	Fri 9am	Fri 10am	Fri 11am	Fri 12pm	Fri 1pm	Fri 2pm	Fri 3pm	Fri 4pm	Fri 5pm	Fri 6pm	Fri 7pm	Fri 8pm	Fri 9pm	Fri 10pm	Fri 11pm	
610 Bridge	3	3	3	4	4	6	8	9	8	8	7	7	6	6	6	6	6	4	4	4	4	5	5	4	4	3	4	5	7	7	7	7	9	8	7	6	5
	WSW	WSW	SW	S	SSE	SSE	SSE	S	S	S	SSW	SSW	SSW	SSW	SSW	SSW	SW	SW	SW	SW	WSW	WSW	WSW	WSW	WSW	WSW	SW	E	E	ESE	SSE	SE	S	S	SSE		
Kinder 1	3	2	3	4	4	6	8	9	8	8	7	7	6	6	6	6	5	4	4	4	4	5	5	4	4	3	4	5	7	7	7	9	8	7	6	5	
	WSW	SW	SSW	S	SSE	SSE	SSE	S	S	S	SSW	SSW	SSW	SSW	SW	SW	SW	SW	SW	SW	WSW	WSW	WSW	WSW	WSW	WSW	SW	E	E	ESE	SSE	SE	S	S	SSE		
Greens Bayou	3	2	3	4	5	7	8	9	8	7	7	7	6	6	6	6	5	4	4	4	4	5	5	4	4	3	4	5	7	7	8	9	8	7	6	5	
	WSW	SW	SSW	S	SSE	SSE	SSE	S	S	S	SSW	SSW	SSW	SSW	SW	SW	SW	SW	SW	SW	WSW	WSW	WSW	WSW	WSW	SSW	ESE	ESE	ESE	SE	SSE	ESE	S	S	SSE		
Shell Crude	5	4	5	7	9	10	11	12	12	12	12	11	9	9	9	9	8	7	6	6	7	8	9	7	6	5	6	9	12	12	11	13	12	10	9	8	
	SW	SW	S	SSE	SSE	SSE	SSE	S	S	S	SSW	SSW	SSW	SW	SW	SW	SW	SW	SW	SW	WSW	WSW	WSW	WSW	WSW	SSW	ESE	ESE	ESE	SE	SSE	SE	S	S	SSE		
Lynchburg Ferries	3	3	4	5	7	9	10	11	10	9	9	8	7	7	7	6	6	5	4	4	4	5	5	6	5	4	4	6	8	9	9	10	8	8	7	6	
	SW	SW	SSW	SSE	SSE	SSE	SSE	S	S	S	SSW	SSW	SSW	SW	SW	SW	SW	SW	SW	SW	WSW	WSW	WSW	WSW	WSW	SSW	ESE	ESE	ESE	SE	SSE	SE	S	S	SSE		
Exxon 3	4	4	5	7	9	10	11	11	9	9	9	8	7	7	7	7	6	6	5	5	5	6	6	5	4	4	5	7	9	9	11	10	8	8	7	6	
	SW	SSW	S	SSE	SSE	SSE	SSE	S	S	S	SSW	SSW	SSW	SSW	SW	SW	SW	SW	SW	SW	WSW	WSW	WSW	WSW	WSW	SSW	S	SE	SE	SE	SE	SE	S	S	SSE		
Morgans Point	4	5	6	8	10	12	12	12	11	11	10	9	9	8	8	8	7	7	6	6	6	6	6	5	5	6	9	11	11	12	12	10	9	8	7		
	SSW	S	SSE	SSE	SSE	SSE	SSE	S	S	S	SSW	SSW	SSW	SSW	SW	SW	SW	SW	SW	SW	WSW	WSW	WSW	WSW	WSW	SSW	SSE	SE	SE	SE	SE	SE	S	S	SSE		
75/76	4	5	7	10	12	13	14	14	13	13	12	11	11	10	10	10	9	9	8	8	8	8	7	5	5	7	10	12	13	14	15	14	12	11	9		
	S	SSE	SSE	SSE	SSE	SSE	S	S	S	S	SSW	SSW	SSW	SSW	SW	SW	SW	SW	SW	WSW	WSW	WSW	WSW	WSW	SSW	SSE	SSE	SE	SE	SE	SE	SE	SSE	S	S	SSE	
63/64	7	8	9	11	13	14	15	15	15	14	13	12	11	11	11	11	10	10	10	9	8	8	8	7	5	5	7	10	12	13	14	15	15	12	10	9	
	SSE	SE	SE	SSE	SSE	SSE	S	S	S	SSW	SSW	SSW	SSW	SSW	SW	SW	SW	SW	SW	WSW	WSW	WSW	WSW	W	WSW	SSE	SE	SE	SE	SE	SE	SSE	S	S	SSE		
51/52	4	5	6	8	11	12	13	14	13	12	11	11	11	10	10	10	9	9	9	9	8	8	7	5	5	6	9	12	13	14	14	11	10	9	9		
	S	SE	SSE	SSE	SSE	S	S	S	S	S	SSW	SSW	SSW	SSW	SW	SW	SW	SW	SW	WSW	WSW	WSW	W	WSW	S	SE	SE	SE	SE	SE	SSE	S	S	S			
37/38	4	5	6	8	10	11	12	12	12	10	10	10	10	10	10	9	9	9	9	8	8	7	8	7	5	5	6	9	12	12	13	13	11	9	8	8	
	S	SSE	SSE	SSE	S	S	S	S	S	SSW	SSW	SSW	SSW	SSW	SW	SW	SW	SW	SW	WSW	WSW	WSW	W	WSW	SSE	SSE	SE	SE	SE	SSE	SE	S	S	S	S		
25/26	4	5	6	8	9	9	10	10	10	9	9	9	9	9	8	8	8	8	8	7	7	7	6	5	6	7	9	11	11	11	12	9	8	7	7		
	SSW	S	S	S	S	S	S	S	S	S	SSW	SSW	SSW	SSW	SSW	SW	SW	SW	SW	WSW	WSW	WSW	W	WSW	SSW	SSE	SE	SE	SE	SE	SSE	S	S	S			
11/12	4	6	7	8	9	9	10	10	9	9	9	9	9	9	9	9	8	8	7	7	7	7	6	5	6	7	9	10	10	11	11	9	8	8	8		
	SW	S	S	S	S	S	S	S	S	S	SSW	SSW	SSW	SSW	SSW	SW	SW	SW	SW	WSW	WSW	WSW	W	WSW	SSW	S	SSE	SE	SE	SSE	SSE	SE	S	S			
1 & 2 Bravo	4	5	5	7	8	9	10	11	11	10	11	11	11	11	11	11	11	11	10	9	9	8	8	7	5	6	8	10	11	12	13	11	9	9	9		
	WSW	SW	SSW	S	S	S	S	S	S	S	SSW	SSW	SSW	SSW	SSW	SW	SW	SW	SW	SW	WSW	WSW	W	W	W	SW	SSW	S	SSE	SE	SSE	SSE	SE	S	S		

NOTE: This is automated data that may/may not agree with the official BAM thinking that's found on the daily slides. This data should be used as a guide only

Houston Pilots: Thu. 9/7/2023



Forecast Discussion

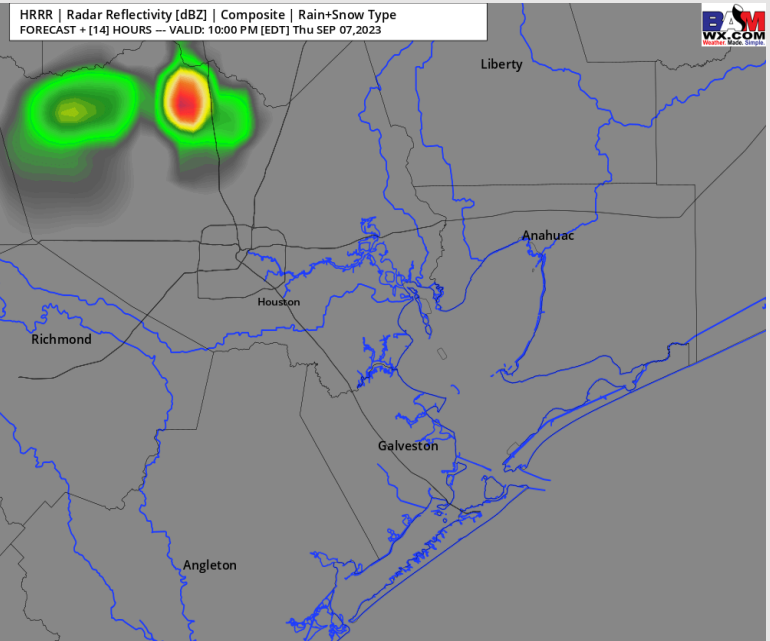
Precip: Favoring mostly dry conditions for remainder of the day with a slight (20%) chance for an afternoon shower or thunderstorm from 5 - 9 PM. A quick locally heavy downpour will be possible under these storms.

Wind: Winds out of the W/SW will slowly veer out of the SSW by 2 PM and continue there the rest of the day. **N of Morgan's Point:** 2 - 7 kts until 5 PM, then increasing to 7 - 12 kts from 5 - 9 PM, before decreasing to 3-8 kts for the remainder of the evening. **S of Morgan's Point:** 6 - 11 kts until 3 PM, increasing to 11 - 16 kts at that time and remaining at that clip the rest of the evening.

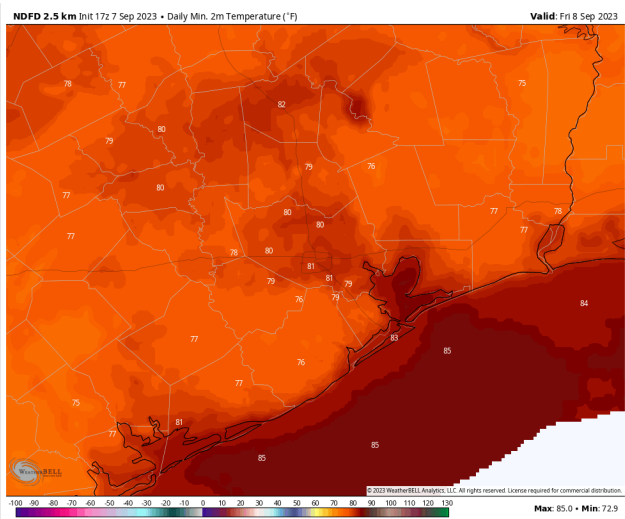
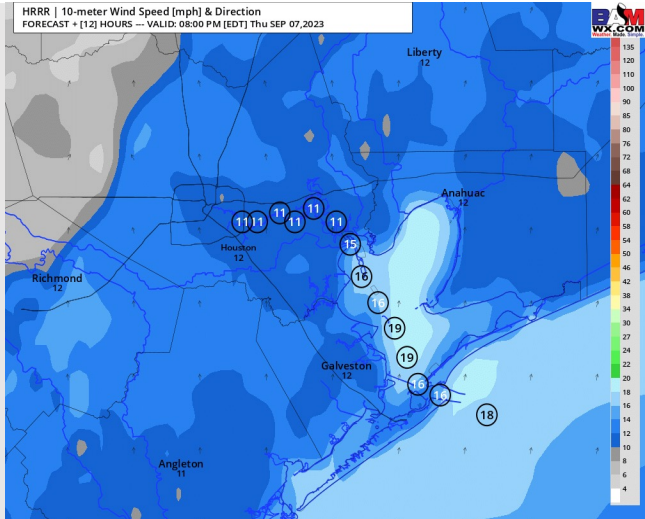
Low Temps: **S of Morgan's Point:** Mid 80s F. **N of Morgan's Point:** Upper 70s F / Low 80s F.

Visibility: Not anticipating any fog issues at this time.

Precip Image: 9 PM CT



Wind Speed:
7 PM CT



Low Temps
FRI AM

Houston Pilots: Fri. 9/8/2023



Forecast Discussion

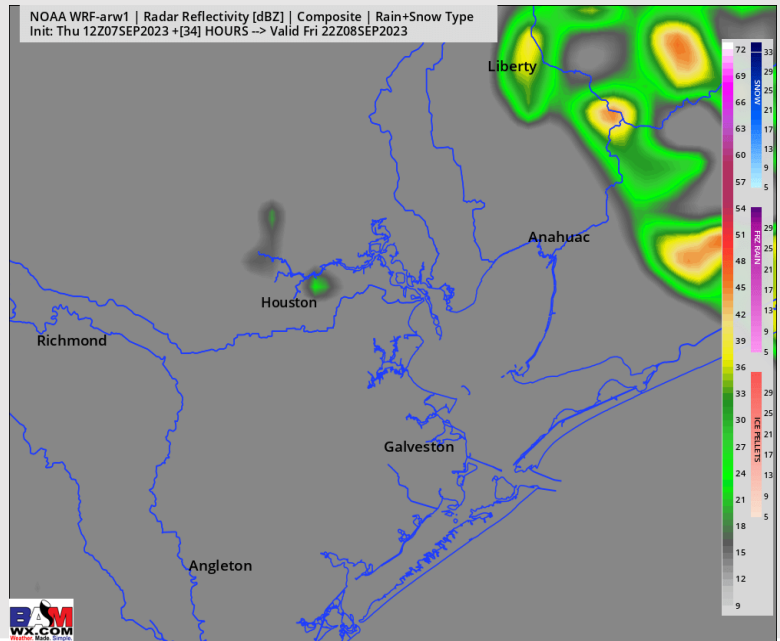
Precip: Favoring the majority of Friday to stay dry outside of showers/storms during the 4 - 8 PM timeframe. **Lower confidence is present** on the intensity and timing of thunderstorms, as they will be dependent on a boundary to the NE of the bay. The risk is that the timing of rainfall can be a bit later in the evening near 9 PM through 2 AM early SAT AM. If thunderstorms can become severe, **40-60 MPH wind gusts and large hail will be the primary risks.**

Wind: Winds will be out of the SW through 1 PM before slowly veering counterclockwise out of the S/SE by 3 PM. **N of Morgan's Point:** 3-8 kts outside of a slight increase to 6-11 kts from 5-8 PM (dependent on T-storm activity). **S of Morgan's Point:** 11 -15 kts through 8 AM before decreasing to 6-11 kts until 4 PM. Speeds increase slightly to 9 - 14 kts until 9 PM before decreasing to 3-8 kts the rest of the evening.

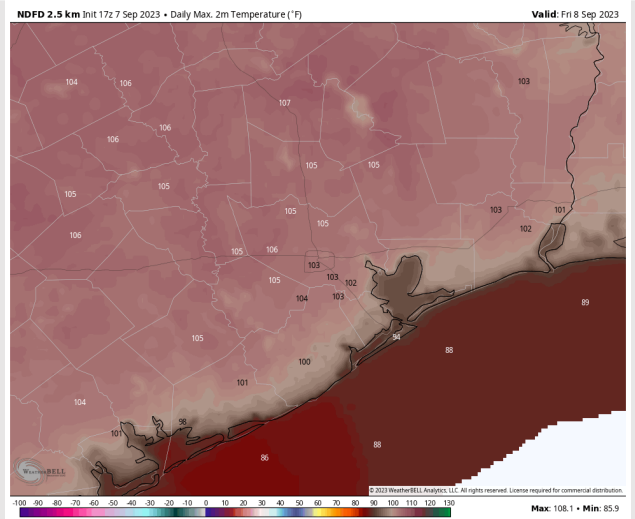
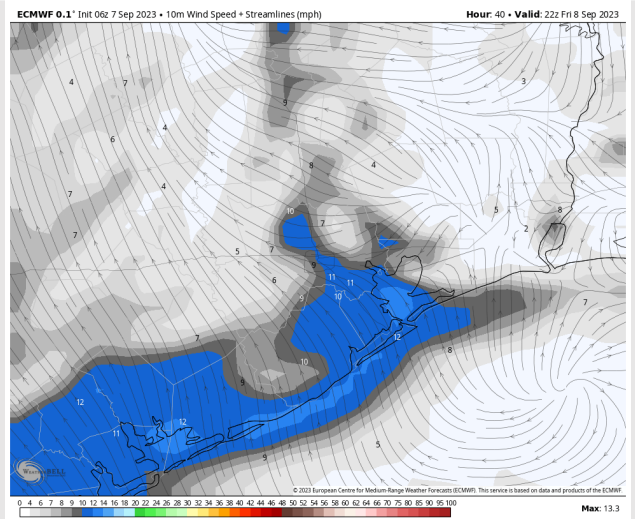
High Temps: **S of Morgan's Point:** 90 F to Low 90s F. **N of Morgan's Point:** Low 100s F.

Visibility: No visibility issues expected.

Precip Image: 5 PM CT



Wind Speed:
5 PM CT



High Temps
Friday

Houston Pilots: Sat. 9/9/2023

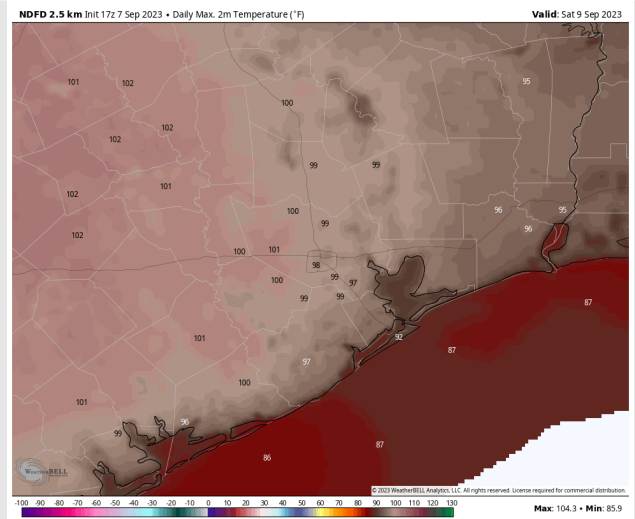
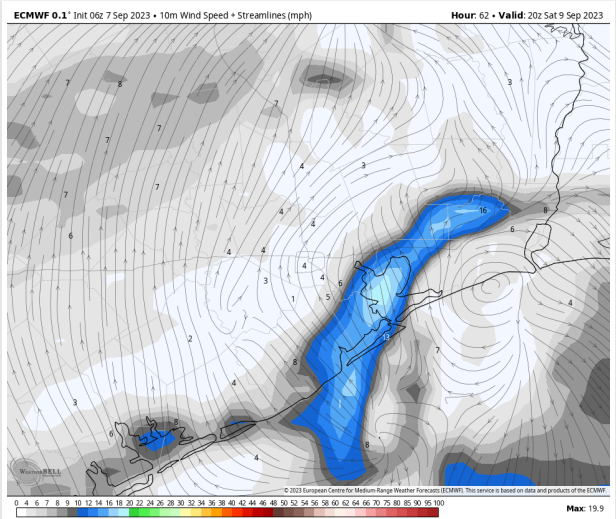
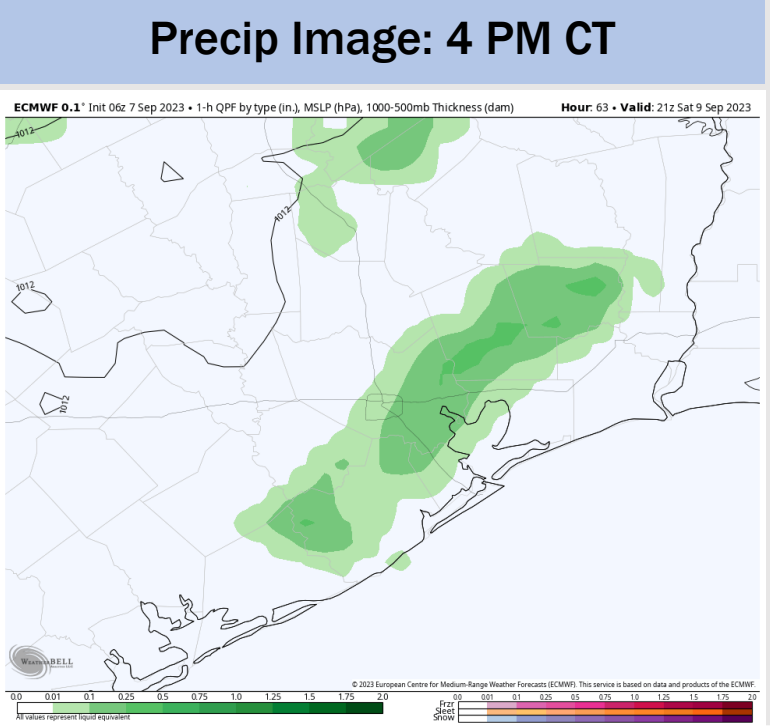
Forecast Discussion

Precip: A very slight chance for an isolated shower/storm (10%) between 11 AM - 3PM. Chances then increase to 30-40% from 4 PM - 8 PM before coverage tapers off by 9 PM. Then favoring dry conditions through the rest of the night.

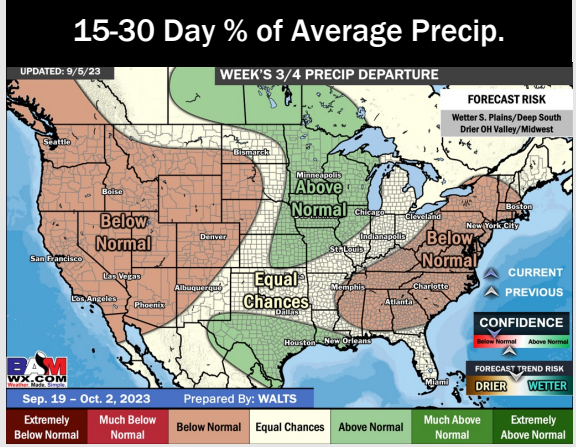
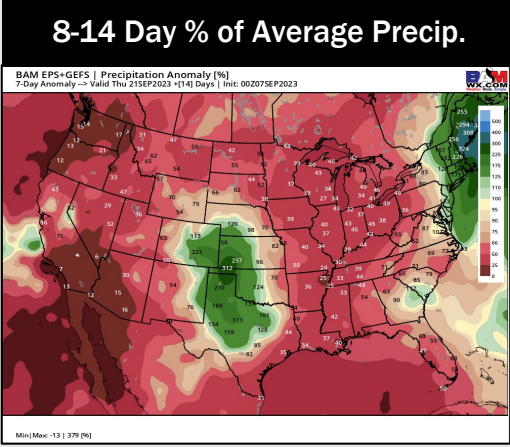
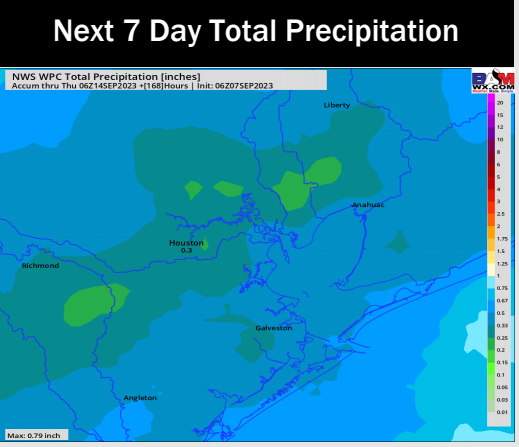
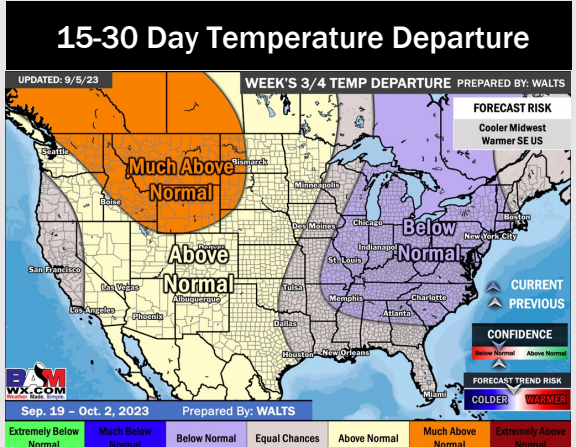
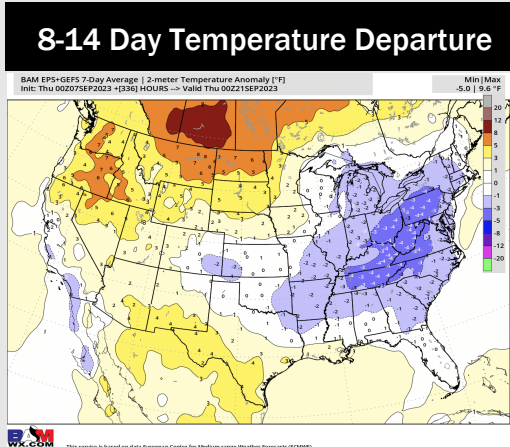
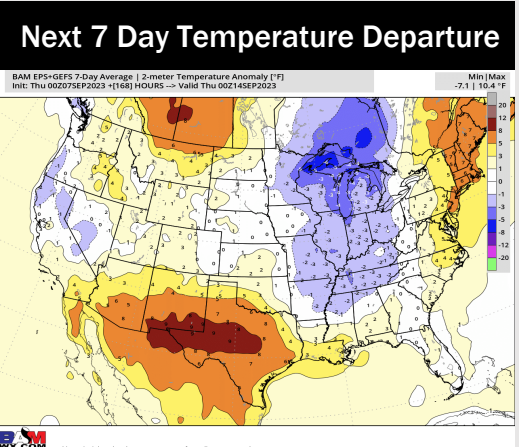
Wind: Winds out of the WSW will become variable by 12 PM and remain that way for the remainder of the day. **N of Morgan's Point:** 2-7 kts throughout the day. **S of Morgan's Point:** Increasing to 7-12 kts by 3 AM, remaining at that clip until 10 AM when winds will decrease to 2-7 kts. Winds will remain at this speed for the remainder of the day. We will need to watch for a gust front towards 3 PM in association with T-storm activity that can briefly raise winds to 16 - 18 kts.

High Temps: **S of Morgan's Point:** Low/Mid 90s F. **N of Morgan's Point:** Upper 90s / Near 100 F.

Visibility: No visibility concerns at this time.



Houston Pilots: 9/7/23



- Low end rain chances will be at play through the weekend. Expecting temperatures to continue to remain above normal.
- Expecting below normal precipitation chances and slightly above normal temperatures for the week 2 timeframe.
- Near normal temperatures and above normal chances for precipitation are favored in the weeks 3/4 timeframe.