

# Houston Pilots Forecast Package



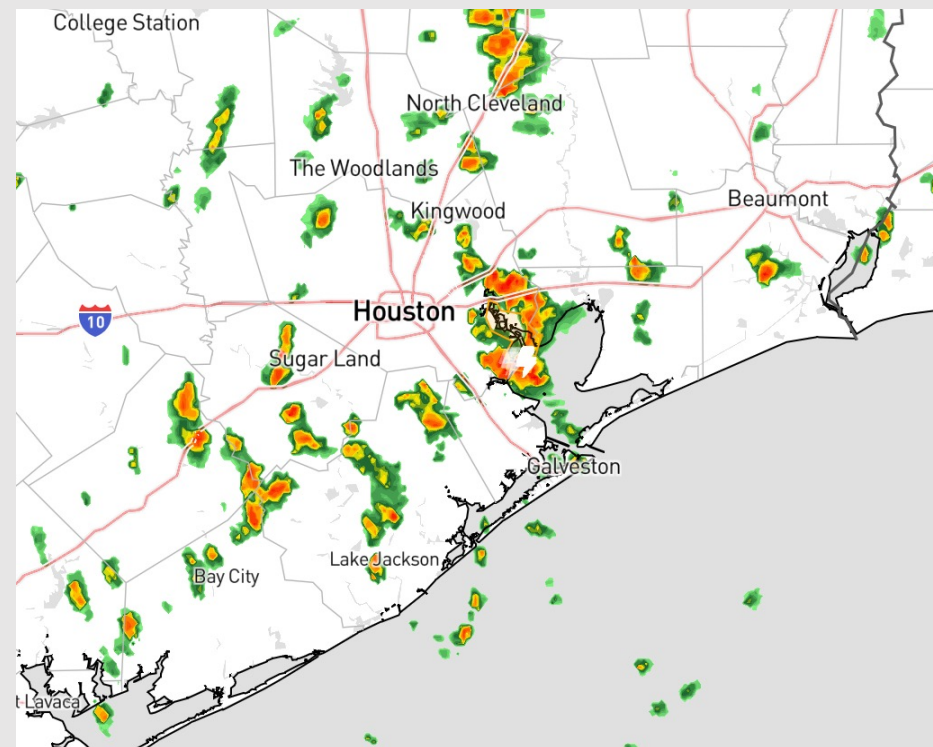
Updated: 11:45 AM CT

Monday, September 4, 2023

Forecaster: Jonathan Kipper

## Weather Headlines

- Not anticipating tropical development in the Gulf of Mexico over the next 7-10 days but monitoring for potential development in the Atlantic beyond September 8<sup>th</sup>.
- Favoring scattered showers/storms throughout the early part of this week.
- Not anticipating any visibility concerns over the next few days.



**Radar/NWS Alerts: 11:45 AM CT**



As always, please do not hesitate to reach out to us with any forecast questions via the chat option on the Weather Porthole or our on-call number, **(317)-560-8122** press 1 for forecast questions.

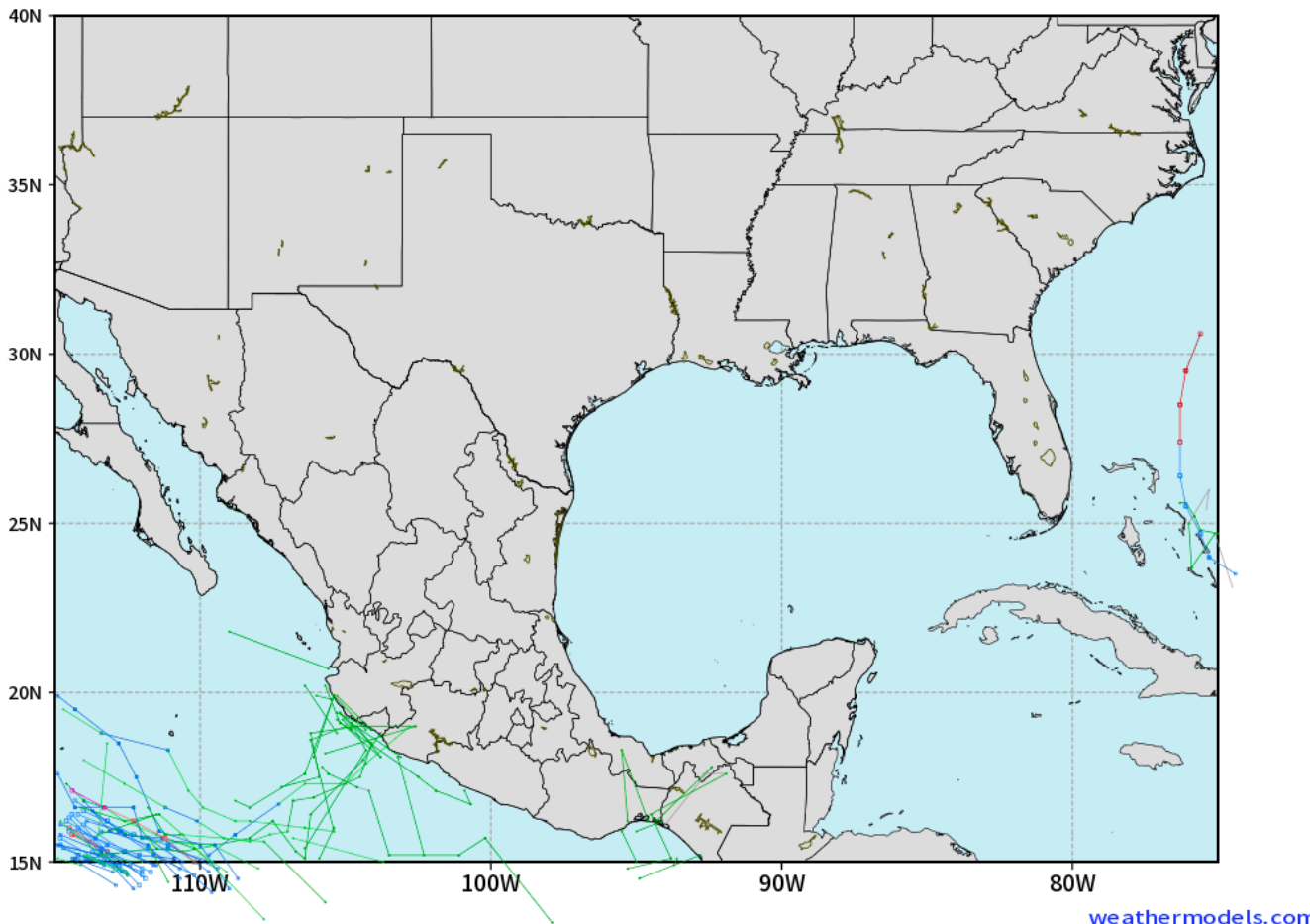
# Houston Pilots Tropical Update

## European Model Next 10 Days Tropical Tracks

ECMWF GULF EPS Cyclone Locations --> Next [10-days]  
INIT: 00Z04SEP2023 --> UNTIL 00Z14SEP2023

o-o ENSEMBLE MEAN  
o-o 1000 - 1010 hPa  
o-o 980 - 999 hPa

o-o 960 - 979 hPa  
o-o 950 - 959 hPa  
o-o < 950 hPa



Not anticipating  
tropical  
development in the  
Gulf of Mexico over  
the next 7-10 days.

Currently  
monitoring for  
potential  
development in the  
Atlantic beyond  
September 8<sup>th</sup>.

# Houston Pilots Visibility Chart (miles)



Time	Mon 11am	Mon 12pm	Mon 1pm	Mon 2pm	Mon 3pm	Mon 4pm	Mon 5pm	Mon 6pm	Mon 7pm	Mon 8pm	Mon 9pm	Mon 10pm	Mon 11pm	Tue 12am	Tue 1am	Tue 2am	Tue 3am	Tue 4am	Tue 5am	Tue 6am	Tue 7am	Tue 8am	Tue 9am	Tue 10am	Tue 11am	Tue 12pm	Tue 1pm	Tue 2pm	Tue 3pm	Tue 4pm	Tue 5pm	Tue 6pm	Tue 7pm	Tue 8pm	Tue 9pm	Tue 10pm
610 Bridge	10	10	10	10	10	10	10	10	10	10	10	10	10	10	10	10	10	10	10	10	10	10	10	10	10	10	10	10	10	10	10	10	10	10	10	
Kinder 1	10	10	10	10	10	10	10	10	10	10	10	10	10	10	10	10	10	10	10	10	10	10	10	10	10	10	10	10	10	10	10	10	10	10	10	
Greens Bayou	10	10	10	10	10	10	10	10	10	10	10	10	10	10	10	10	10	10	10	10	10	10	10	10	10	10	10	10	10	10	10	10	10	10	10	
Shell Crude	10	10	10	10	10	10	10	10	10	10	10	10	10	10	10	10	10	10	10	10	9	10	10	10	10	10	10	10	10	10	10	10	10	10	10	
Lynchburg Ferries	10	10	10	10	10	10	10	10	10	10	10	10	10	10	10	10	10	10	10	10	10	10	10	10	10	10	10	10	10	10	10	10	10	10	10	
Exxon 3	10	10	10	10	10	10	10	10	10	10	10	10	10	10	10	10	10	10	10	10	10	10	10	10	10	10	10	10	10	10	10	10	10	10	10	
Morgans Point	10	10	10	10	10	10	10	10	10	10	10	10	10	10	10	10	10	10	10	10	10	10	10	10	10	10	10	10	10	10	10	10	10	10	10	
75/76	10	10	10	10	10	10	10	10	10	10	10	10	10	10	10	10	10	10	10	10	10	10	10	10	10	10	10	10	10	10	10	10	10	10	10	
63/64	10	10	10	10	10	10	10	10	10	10	10	10	10	10	10	10	10	10	10	10	10	10	10	10	10	10	10	10	10	10	10	10	10	10	10	
51/52	10	10	10	10	10	10	10	10	10	10	10	10	10	10	10	10	10	10	10	10	10	10	10	10	10	10	10	10	10	10	10	10	10	10	10	
37/38	10	10	10	10	10	10	10	10	10	10	10	10	10	10	10	10	10	10	10	10	10	10	10	10	10	10	10	10	10	10	10	10	10	10	10	
25/26	10	10	10	10	10	10	10	10	10	10	10	10	10	10	10	10	10	10	10	10	10	10	10	10	10	10	10	10	10	10	10	10	10	10	10	
11/12	10	10	10	10	10	10	10	10	10	10	10	10	10	10	10	10	10	10	10	10	10	10	10	10	10	10	10	10	10	10	10	10	10	10	10	
1 & 2 Bravo	10	10	10	10	10	10	10	10	10	10	10	10	10	10	10	10	10	10	10	10	10	10	10	10	10	10	10	10	10	10	10	10	10	10	10	

NOTE: This is automated data that may/may not agree with the official BAM thinking that’s found on the daily slides or special visibility report slides. This data should be used as a guide only

# Houston Pilots Wind Chart



**Example**

Sustained wind 13 Knots  
Gusts 18 Knots  
Wind from the N

WS: 13  
G:18  
N

Time Knots	Mon 11am	Mon 12pm	Mon 1pm	Mon 2pm	Mon 3pm	Mon 4pm	Mon 5pm	Mon 6pm	Mon 7pm	Mon 8pm	Mon 9pm	Mon 10pm	Mon 11pm	Tue 12am	Tue 1am	Tue 2am	Tue 3am	Tue 4am	Tue 5am	Tue 6am	Tue 7am	Tue 8am	Tue 9am	Tue 10am	Tue 11am	Tue 12pm	Tue 1pm	Tue 2pm	Tue 3pm	Tue 4pm	Tue 5pm	Tue 6pm	Tue 7pm	Tue 8pm	Tue 9pm	Tue 10pm	
610 Bridge	6	6	7	8	8	8	9	10	10	9	8	7	6	6	6	5	4	4	4	4	4	4	5	6	6	6	6	6	7	7	8	9	9	8	7	7	
	SSW	SSE	SE	SE	SSE	SE	SE	SSE	SSE	SSE	SSE	SSE	SSE	SSE	SSE	S	S	S	S	SSE	SSE	S	S	S	S	SSE	SSE	SSE	SSE	SSE	SSE	SSE	SSE	SSE	SSE		
Kinder 1	6	6	7	8	8	8	9	10	10	9	8	7	6	5	5	5	4	4	4	4	4	4	5	6	6	6	6	7	7	7	8	10	10	8	7	6	
	S	SSE	SE	SE	SSE	SE	SE	SSE	SSE	SSE	SSE	SSE	SSE	SSE	SSE	S	S	S	S	SSE	SSE	S	S	S	S	SSE	SSE	SSE	SSE	SSE	SSE	SSE	SSE	SSE	SSE		
Greens Bayou	6	7	7	8	9	9	10	10	10	9	8	7	6	5	5	5	4	4	4	4	4	4	5	6	6	6	6	7	8	8	9	10	10	8	7	6	
	S	SE	SE	SE	SSE	SE	SE	SE	SSE	SSE	SSE	SSE	SSE	SSE	SSE	S	S	S	S	SSE	SSE	S	S	S	S	SSE	SSE	SSE	SE	SE	SSE	SSE	SSE	SSE	SSE		
Shell Crude	6	7	8	8	9	9	10	11	10	9	8	7	6	6	6	5	5	4	4	4	4	5	6	6	6	7	7	8	9	10	10	10	8	7	6		
	SSE	SE	SE	SE	SE	SE	SE	SE	SSE	SSE	SSE	SSE	SSE	SSE	S	S	S	S	S	SSE	SSE	S	S	S	S	SSE	SSE	SSE	SSE	SE	SE	SSE	SSE	SSE	SSE		
Lynchburg Ferries	6	7	8	9	10	11	12	12	11	10	9	8	7	6	6	6	5	5	4	4	4	5	6	6	7	7	8	9	10	11	11	11	9	8	7		
	SSE	SE	SE	SE	SE	SE	SE	SE	SSE	SSE	SSE	SSE	SSE	SSE	S	S	S	S	S	SSE	SSE	S	S	S	SSE	SSE	SSE	SSE	SE	SE	SSE	SSE	SSE	SSE	SSE		
Exxon 3	6	8	9	10	11	12	12	12	12	11	10	9	8	7	7	7	7	6	5	5	5	5	6	6	7	8	8	9	10	10	11	12	11	9	8	7	
	SSE	SE	SE	SE	SE	SSE	SE	SE	SSE	SSE	SSE	SSE	SSE	SSE	S	S	S	S	S	S	7	7	7	8	9	9	9	10	11	12	13	14	14	12	11	10	
Morgans Point	7	9	10	11	12	13	14	14	13	12	11	10	10	9	9	9	9	8	7	6	6	6	7	7	7	8	8	10	11	12	13	13	12	11	10	9	
	SSE	SE	SE	SE	SSE	SE	SE	SSE	SSE	SSE	SSE	SSE	SSE	S	S	S	S	S	S	S	S	S	S	S	S	SSE	SSE	SSE	SSE	SSE	SSE	SSE	SSE	SSE	SSE	SSE	
75/76	9	10	11	12	13	14	16	16	15	14	14	12	12	12	11	11	11	10	9	9	8	8	8	8	8	8	9	10	12	13	15	15	14	13	12	11	
	SE	SE	SE	SE	SSE	SE	SE	SE	SSE	SSE	SSE	SSE	SSE	S	S	S	S	S	S	S	S	S	S	S	S	SSE	SSE	SSE	SE	SE	SE	SE	SSE	SSE	SSE	SSE	
63/64	9	10	10	12	13	14	15	16	15	14	13	12	12	12	12	12	12	11	10	9	9	9	8	8	8	9	8	10	12	14	14	13	13	11	11		
	SE	SE	SE	SE	SSE	SSE	SE	SSE	SSE	SSE	SSE	SSE	SSE	S	S	S	S	S	S	S	S	S	S	S	S	SSE	SSE	SSE	SE	SE	SE	SE	SSE	SSE	SSE		
51/52	9	9	9	11	12	13	14	15	14	13	12	12	12	12	12	12	11	11	10	9	9	9	9	9	8	8	9	11	11	12	13	13	12	10	10		
	SSE	SSE	SE	SSE	SSE	SSE	SSE	SSE	SSE	SSE	SSE	SSE	SSE	S	S	S	S	S	S	S	S	S	S	S	SSE	SSE	SSE	SSE	SSE	SSE	SSE	SSE	SSE	SSE	SSE		
37/38	10	9	9	10	11	12	12	13	13	12	11	11	11	11	11	11	10	10	10	9	9	9	9	9	8	9	8	9	10	10	11	11	11	11	9	9	
	SSE	SSE	SE	SSE	SSE	SSE	SSE	SSE	SSE	SSE	SSE	SSE	SSE	S	S	S	S	S	S	S	S	S	S	S	SSE	SSE	SSE	SSE	SSE	SSE	SSE	SSE	SSE	SSE	SSE		
25/26	10	9	9	10	10	10	11	11	11	10	10	10	10	10	10	10	9	9	8	8	8	8	8	8	8	8	9	9	9	9	9	9	9	9	8	8	
	SSE	SSE	SSE	SSE	SSE	SSE	SSE	SSE	SSE	SSE	SSE	SSE	SSE	SSE	S	S	S	S	S	S	S	S	S	S	SSE	SSE	SSE	SSE	SSE	SSE	SSE	SSE	SSE	SSE	SSE	SSE	
11/12	10	9	9	9	10	10	10	11	10	10	10	10	10	10	10	10	9	9	9	8	8	8	8	8	8	8	8	9	9	9	9	9	9	9	8	8	
	SSE	SSE	SSE	SSE	SSE	SSE	SSE	SSE	SSE	SSE	SSE	SSE	SSE	SSE	S	S	S	S	S	S	S	S	S	S	S	SSE	SSE	S	SSE	SSE	SSE	SSE	SSE	SSE	SSE	SSE	
1 & 2 Bravo	10	8	9	9	10	10	11	11	11	11	12	12	12	12	12	12	11	11	10	10	9	9	9	9	8	8	8	8	8	8	9	9	9	9	10	9	9
	SSE	SSE	SSE	SSE	SSE	SSE	SSE	SSE	SSE	SSE	SSE	SSE	SSE	SSE	S	S	S	S	S	S	S	S	S	S	S	SSE	S	S	SSE	SSE	SSE	SSE	SSE	SE	SE	SSE	

NOTE: This is automated data that may/may not agree with the official BAM thinking that's found on the daily slides.  
This data should be used as a guide only



# Houston Pilots: Mon. 9/4/2023

## Forecast Discussion

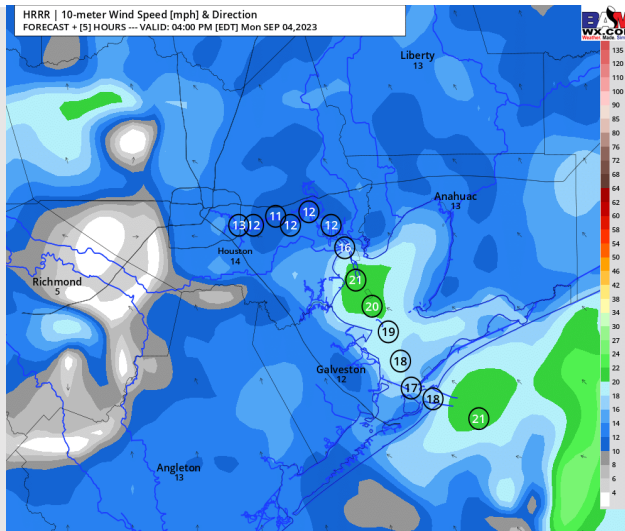
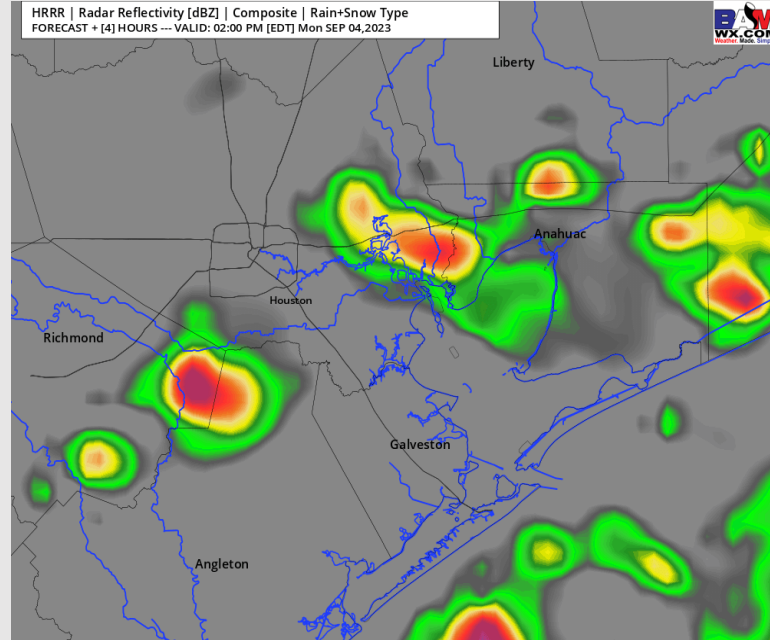
**Precip:** Scattered showers/storms will continue across the area through 4 PM. After 4 PM, coverage will gradually become more isolated through 7 PM before hit/miss showers linger around after 7 PM N of Morgan's Point.

**Wind:** Winds out of the SSW will continue to shift to become out of the SSE by 2 PM and continue there the rest of the day. **N of Morgan's Point:** Wind speeds will increase to 7 - 12 kt by 1 PM, decrease slightly to 5-10 kts after 9 PM. **S of Morgan's Point:** Winds will continue to increase to 14-19 kts by 2 PM and continue there for the rest of the day. **Wind gusts of 30-35 kts will be possible under the strongest cells.**

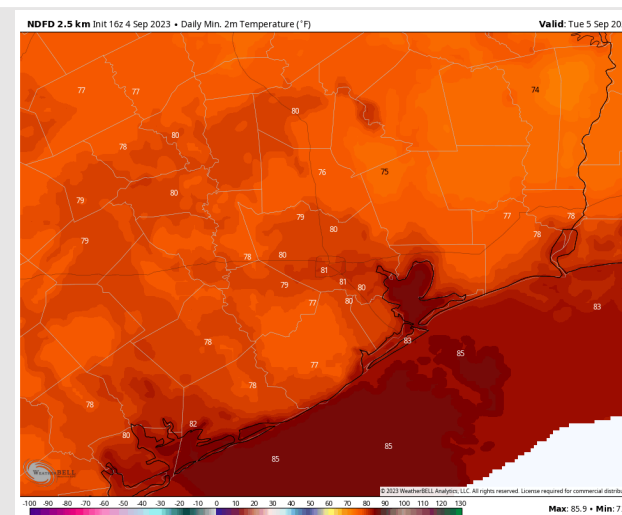
**Low Temps:** **S of Morgan's Point:** Mid 80s F. **N of Morgan's Point:** Low 80s F.

**Visibility:** Not anticipating any fog issues at this time.

## Precip Image: 1 PM CT



**Wind Speed:**  
**3 PM CT**



**Low Temps**  
**TUE AM**

# Houston Pilots: Tue. 9/5/2023

## Forecast Discussion

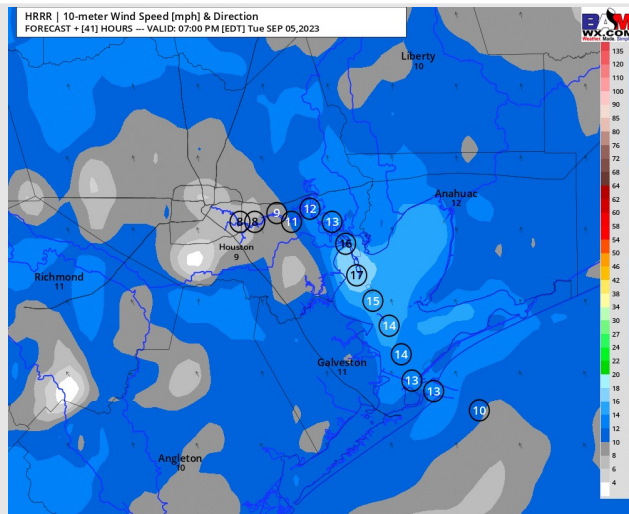
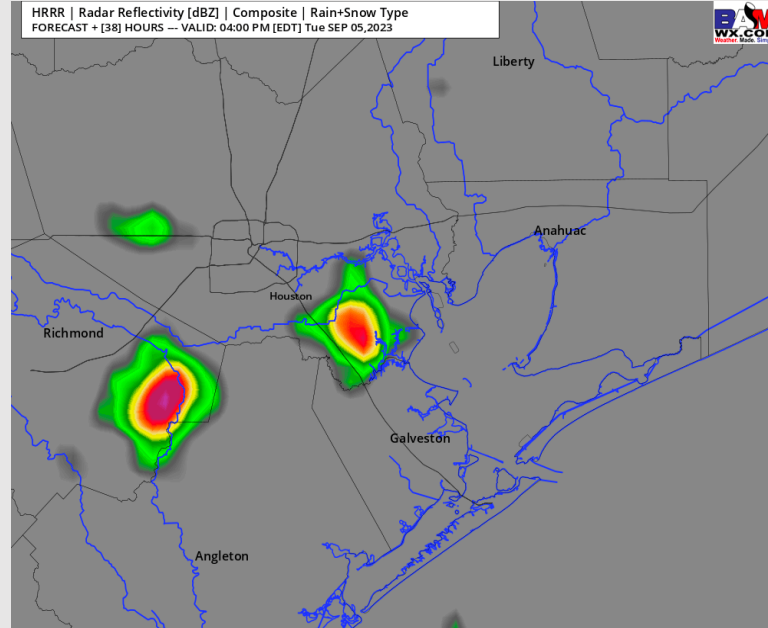
**Precip:** Favoring isolated showers/storms (10% chances) to continue through 7 AM on Tuesday, before coverage increases to hit/miss (20-30% chances) through 6 PM. After 6 PM, dry conditions are expected for the rest of the evening.

**Wind:** Winds will be out of the SSE throughout the day on Tuesday. **N of Morgan's Point:** 3-8 kts through 1 PM before increasing to 7-12kts the rest of the day. **S of Morgan's Point:** 12-17kts throughout the entire day, aside for a brief decrease in winds to 5-10 kts from 10 AM-12 PM.

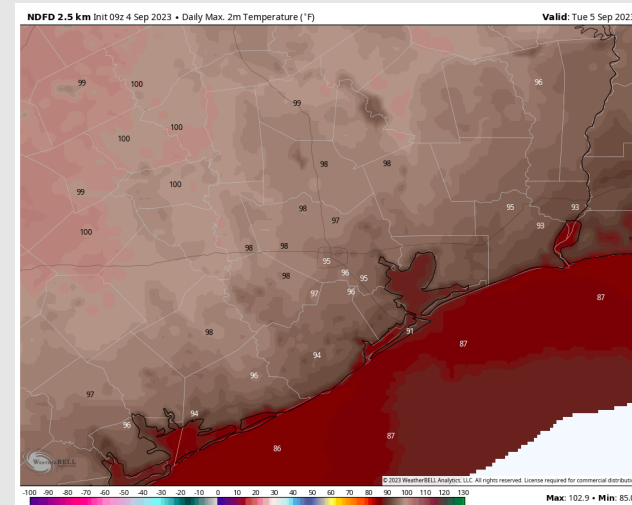
**High Temps:** **S of Morgan's Point:** Mid/Upper 80s F. **N of Morgan's Point:** Mid 90s F.

**Visibility:** No visibility issues expected.

## Precip Image: 3 PM CT



Wind Speed:  
6 PM CT



High Temps  
Tuesday

## Forecast Discussion

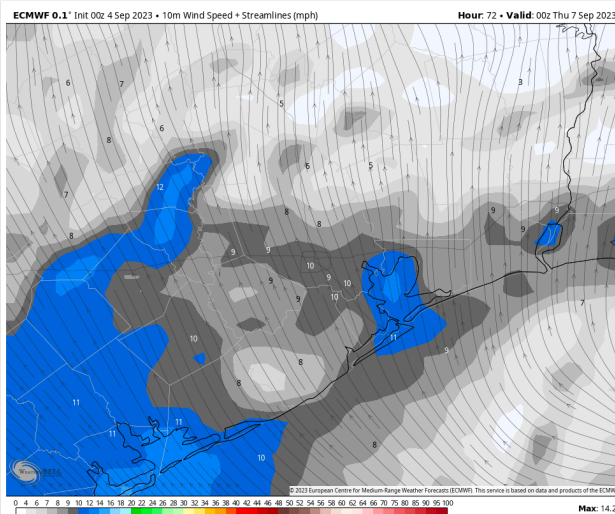
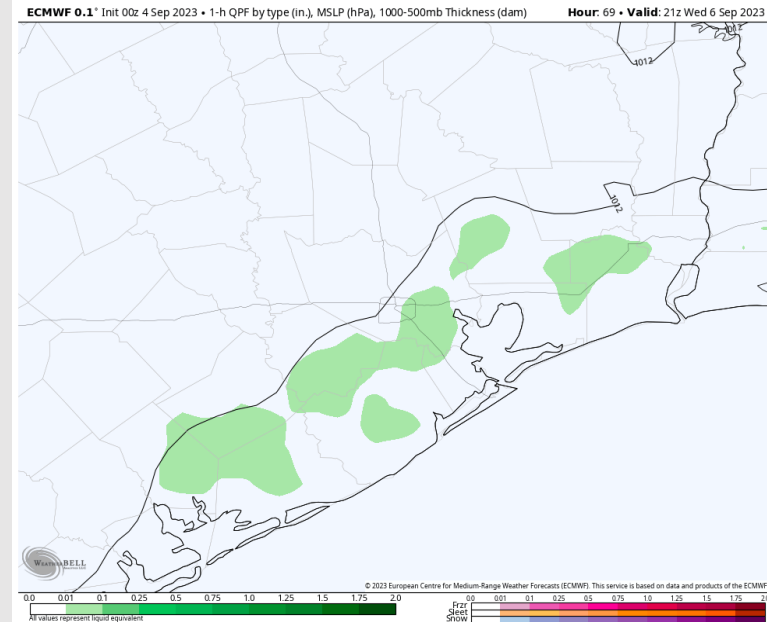
**Precip:** Favoring a 10-20% chance for hit/miss showers/storms from 12 - 7 PM. After 7 PM favoring dry conditions for the rest of the day.

**Wind:** Favoring winds to be out of the SSE throughout the day. **N of Morgan's Point:** 2-7 kts until 4 PM, increasing to 4-9 kts through 9 PM before decreasing back to 2-7 kts for the remainder of the evening. **S of Morgan's Point:** 7-12 kts through 8 AM, decreasing to 2-7 kts until 2 PM and returning to 7-12 kts after this time.

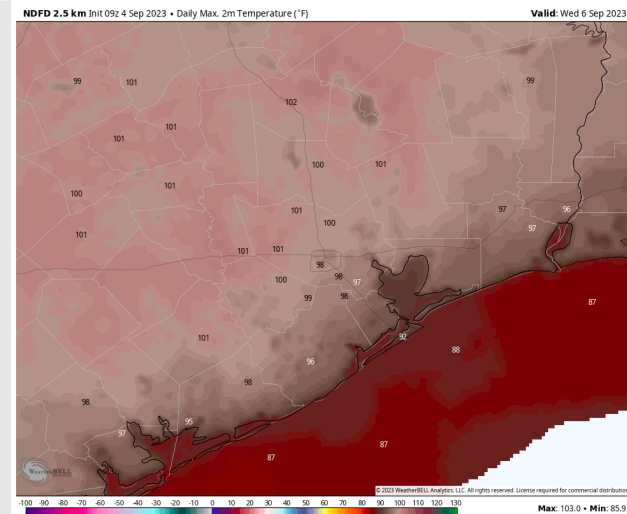
**High Temps:** **S of Morgan's Point:** Low 90s F. **N of Morgan's Point:** Upper 90s F/near 100 F.

**Visibility:** No Visibility concerns at this time.

## Precip Image: 4 PM CT



Wind Speed:  
7 PM CT

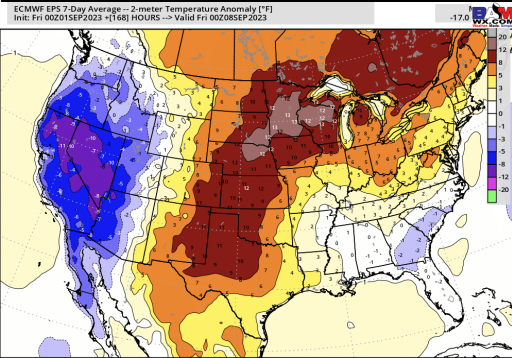


High Temps  
Wednesday

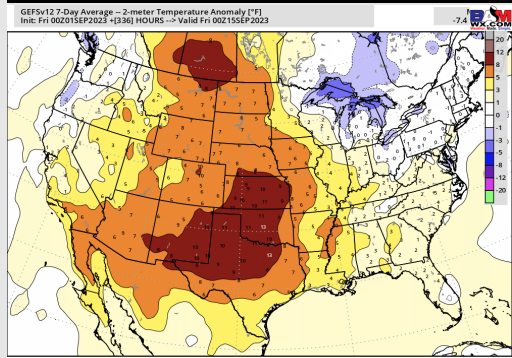


# Houston Pilots: 9/4/23

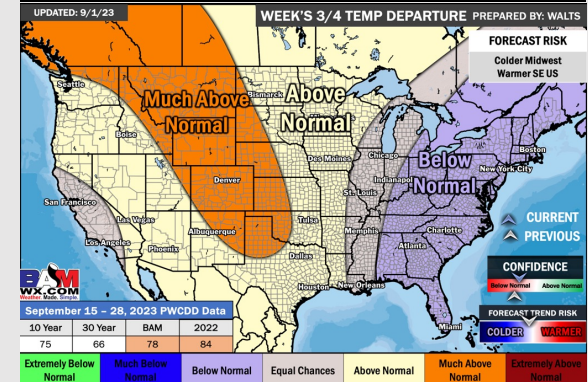
## Next 7 Day Temperature Departure



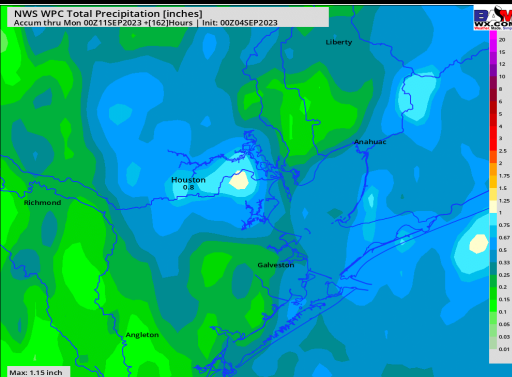
## 8-14 Day Temperature Departure



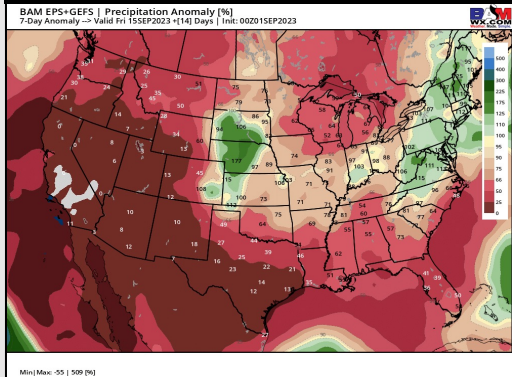
## 15-30 Day Temperature Departure



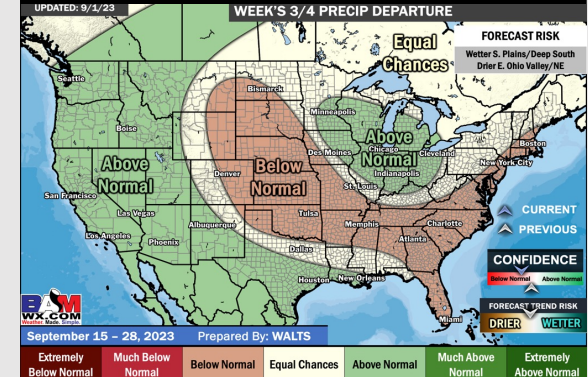
## Next 7 Day Total Precipitation



## 8-14 Day % of Average Precip.



## 15-30 Day % of Average Precip.



- Better rain chances start today and will last through Tuesday. Expecting temperatures to continue to remain above normal.
- Expecting below normal precipitation chances and above normal temperatures for the week 2 timeframe.
- Above normal temperatures and above normal chances for precipitation are favored in the weeks <sup>3</sup>/<sub>4</sub> timeframe.