

Houston Pilots Forecast Package



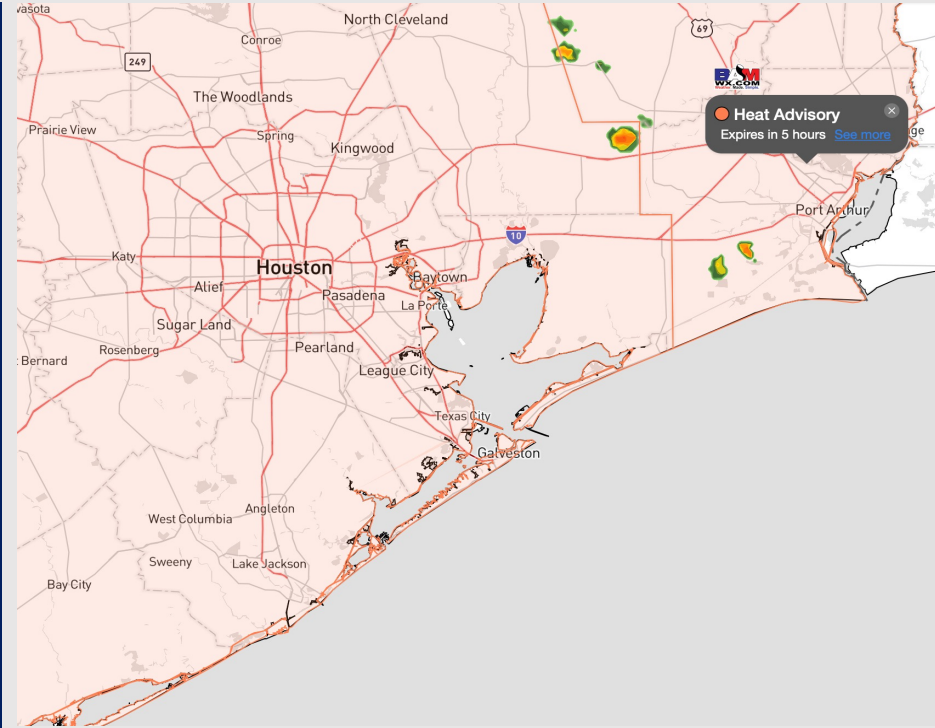
Updated: 2:00 PM CT

Wednesday, September 6, 2023

Forecaster: Alyssa McClung

Weather Headlines

- Not anticipating tropical development in the Gulf of Mexico over the next 7-10 days but monitoring for potential development in the Atlantic beyond September 9th.
- Low-end scattered showers/storms chances will be at play over the next 72 hours.
- Not anticipating any visibility concerns over the next few days.



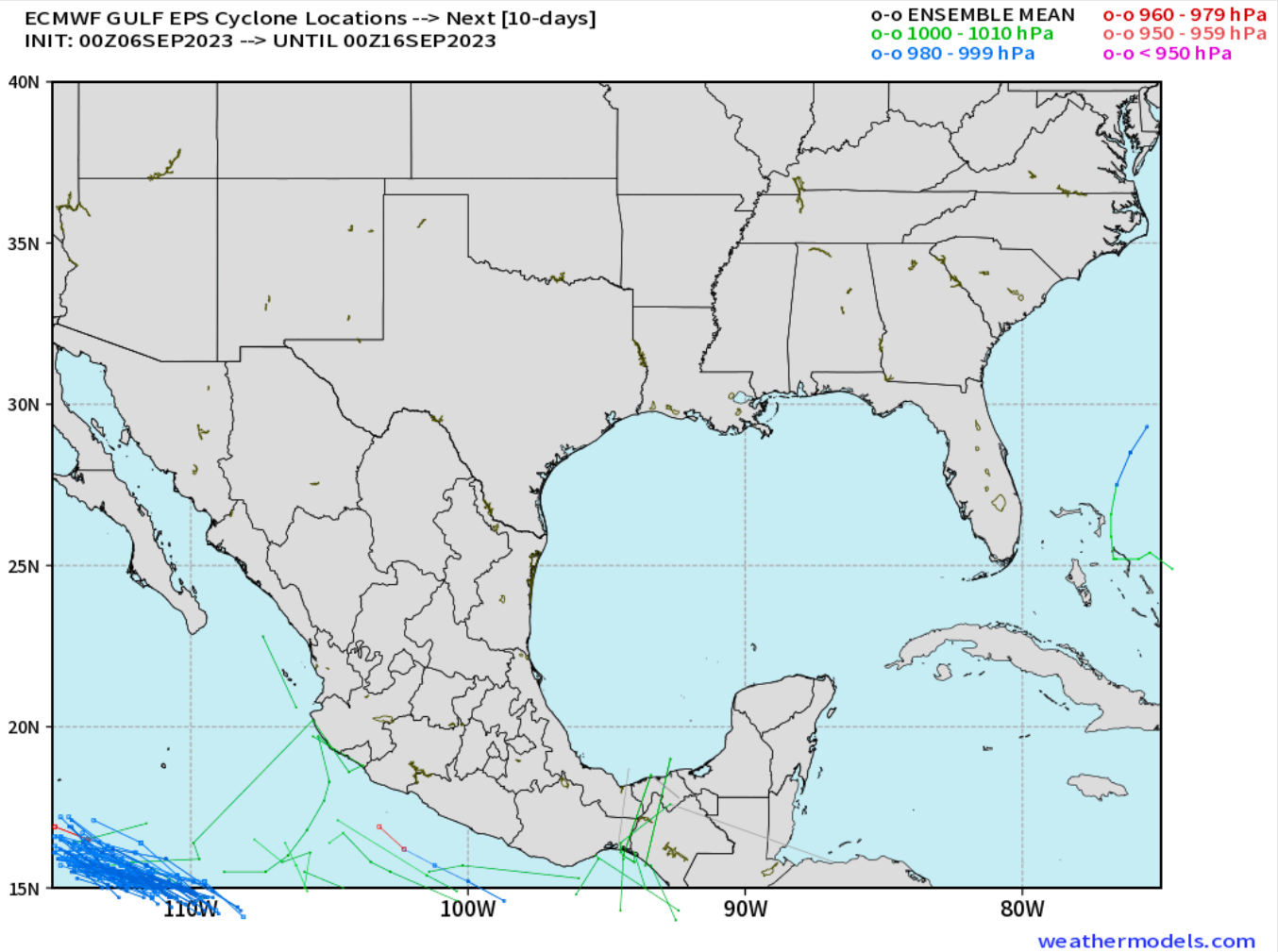
Radar/NWS Alerts: 1:45 PM CT



As always, please do not hesitate to reach out to us with any forecast questions via the chat option on the Weather Porthole or our on-call number, **(317)-560-8122** press 1 for forecast questions.

Houston Pilots Tropical Update

European Model Next 10 Days Tropical Tracks



Not anticipating tropical development in the Gulf of Mexico over the next 7-10 days.

Currently monitoring for potential development in the Atlantic beyond September 9th.

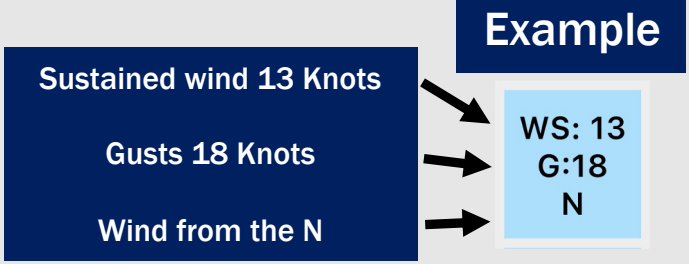
Houston Pilots Visibility Chart (miles)



Time	Wed 12pm	Wed 1pm	Wed 2pm	Wed 3pm	Wed 4pm	Wed 5pm	Wed 6pm	Wed 7pm	Wed 8pm	Wed 9pm	Wed 10pm	Wed 11pm	Thu 12am	Thu 1am	Thu 2am	Thu 3am	Thu 4am	Thu 5am	Thu 6am	Thu 7am	Thu 8am	Thu 9am	Thu 10am	Thu 11am	Thu 12pm	Thu 1pm	Thu 2pm	Thu 3pm	Thu 4pm	Thu 5pm	Thu 6pm	Thu 7pm	Thu 8pm	Thu 9pm	Thu 10pm	Thu 11pm			
610 Bridge	10	10	10	10	10	10	10	10	10	10	10	10	10	10	10	10	10	10	10	7	8	10	10	10	10	10	10	10	10	10	10	10	10	10	10	10	10		
Kinder 1	10	10	10	10	10	10	10	10	10	10	10	10	10	10	10	10	10	10	10	10	7	8	10	10	10	10	10	10	10	10	10	10	10	10	10	10	10	10	
Greens Bayou	10	10	10	10	10	10	10	10	10	10	10	10	10	10	10	10	10	10	10	10	8	8	10	10	10	10	10	10	10	10	10	10	10	10	10	10	10	10	
Shell Crude	10	10	10	10	10	10	10	10	10	10	10	10	10	10	10	10	10	10	10	10	8	8	10	10	10	10	10	10	10	10	10	10	10	10	10	10	10	10	
Lynchburg Ferries	10	10	10	10	10	10	10	10	10	10	10	10	10	10	10	10	10	10	10	10	8	8	10	10	10	10	10	10	10	10	10	10	10	10	10	10	10	10	10
Exxon 3	10	10	10	10	10	10	10	10	10	10	10	10	10	10	10	10	10	10	10	10	9	8	10	10	10	10	10	10	10	10	10	10	10	10	10	10	10	10	
Morgans Point	10	10	10	10	10	10	10	10	10	10	10	10	10	10	10	10	10	10	10	10	10	10	10	10	10	10	10	10	10	10	10	10	10	10	10	10	10	10	
75/76	10	10	10	10	10	10	10	10	10	10	10	10	10	10	10	10	10	10	10	10	10	10	10	10	10	10	10	10	10	10	10	10	10	10	10	10	10	10	
63/64	10	10	10	10	10	10	10	10	10	10	10	10	10	10	10	10	10	10	10	10	10	10	10	10	10	10	10	10	10	10	10	10	10	10	10	10	10	10	
51/52	10	10	10	10	10	10	10	10	10	10	10	10	10	10	10	10	10	10	10	10	10	10	10	10	10	10	10	10	10	10	10	10	10	10	10	10	10	10	
37/38	10	10	10	10	10	10	10	10	10	10	10	10	10	10	10	10	10	10	10	10	10	10	10	10	10	10	10	10	10	10	10	10	10	10	10	10	10	10	
25/26	10	10	10	10	10	10	10	10	10	10	10	10	10	10	10	10	10	10	10	10	10	10	10	10	10	10	10	10	10	10	10	10	10	10	10	10	10	10	
11/12	10	10	10	10	10	10	10	10	10	10	10	10	10	10	10	10	10	10	10	10	10	10	10	10	10	10	10	10	10	10	10	10	10	10	10	10	10	10	
1 & 2 Bravo	10	10	10	10	10	10	10	10	10	10	10	10	10	10	10	10	10	10	10	10	10	10	10	10	10	10	10	10	10	10	10	10	10	10	10	10	10	10	

NOTE: This is automated data that may/may not agree with the official BAM thinking that's found on the daily slides or special visibility report slides. This data should be used as a guide only

Houston Pilots Wind Chart



Time Knots	Wed 12pm	Wed 1pm	Wed 2pm	Wed 3pm	Wed 4pm	Wed 5pm	Wed 6pm	Wed 7pm	Wed 8pm	Wed 9pm	Wed 10pm	Wed 11pm	Thu 12am	Thu 1am	Thu 2am	Thu 3am	Thu 4am	Thu 5am	Thu 6am	Thu 7am	Thu 8am	Thu 9am	Thu 10am	Thu 11am	Thu 12pm	Thu 1pm	Thu 2pm	Thu 3pm	Thu 4pm	Thu 5pm	Thu 6pm	Thu 7pm	Thu 8pm	Thu 9pm	Thu 10pm	Thu 11pm
610 Bridge	3	3	3	4	5	6	8	9	8	7	6	6	5	5	4	4	4	3	2	2	3	4	4	3	3	3	4	5	5	6	7	8	8	7	6	6
	S	SSE	SE	SE	SE	SE	SSE	SSE	S	S	S	S	SSW	SSW	SSW	SW	SW	WSW	WSW	WSW	W	W	W	W	WSW	SW	SE	SSE	SSE	SSE	S	S	S	S	SSW	SSW
Kinder 1	3	3	3	5	5	7	8	9	8	7	6	6	5	5	4	4	3	3	2	2	3	4	4	3	3	3	4	5	5	6	7	8	8	7	6	6
	S	SSE	SE	SE	SE	SE	SSE	SSE	S	S	S	S	SSW	SSW	SSW	SW	SW	WSW	WSW	WSW	W	W	W	W	WSW	SW	SE	SSE	SSE	SSE	S	S	S	S	SSW	SSW
Greens Bayou	3	3	4	5	6	7	8	9	8	7	6	6	5	5	4	4	3	3	2	2	3	4	4	3	3	2	4	5	5	6	8	8	7	6	6	
	SSE	SSE	SE	SE	SE	SE	SSE	SSE	S	S	S	S	SSW	SSW	SSW	SW	SW	WSW	WSW	WSW	W	W	W	W	WSW	SSW	SE	SSE	SSE	SSE	S	S	S	S	SSW	SSW
Shell Crude	3	3	4	6	7	8	9	9	8	7	6	6	5	5	4	4	3	3	2	3	3	4	4	3	3	4	5	6	7	8	9	8	7	6	6	
	SSE	SE	SE	SE	SE	SE	SSE	SSE	S	S	S	S	SSW	SSW	SW	SW	WSW	WSW	WSW	W	W	W	W	WSW	SSW	SE	SSE	SSE	SSE	S	S	S	S	SSW	SSW	
Lynchburg Ferries	4	4	5	6	7	8	9	10	10	8	7	6	5	5	4	4	3	3	3	3	3	4	5	4	3	3	4	5	6	8	9	9	8	7	7	
	SSE	SSE	SE	SE	SE	SE	SSE	SSE	S	S	S	S	SSW	SSW	SW	SW	WSW	WSW	WSW	W	W	W	W	WSW	SSW	SE	SSE	SSE	SSE	S	S	S	S	SSW	SSW	
Exxon 3	4	5	6	7	8	9	10	10	9	8	7	6	6	5	5	4	4	4	4	4	4	4	5	4	3	3	5	6	8	9	10	10	9	8	8	7
	SSE	SSE	SE	SE	SE	SE	SSE	SSE	S	S	S	S	SSW	SSW	SW	SW	WSW	WSW	WSW	W	W	W	W	WSW	SSW	SE	SSE	SSE	SSE	S	S	S	S	SSW	SSW	
Morgans Point	5	6	7	8	10	11	12	11	10	10	8	8	7	6	6	5	5	5	5	5	5	5	6	7	6	6	8	9	10	11	11	10	10	9	8	8
	SSE	SSE	SE	SE	SE	SE	SSE	SSE	S	S	S	S	SSW	SSW	SW	SW	WSW	WSW	WSW	W	W	W	W	WSW	SSW	S	SSE	SSE	SSE	SSE	S	S	S	S	SSW	SSW
75/76	4	6	7	9	11	12	13	13	12	11	10	9	9	8	8	7	7	6	6	6	6	6	5	4	4	5	7	9	11	12	13	13	12	11	11	10
	SE	SE	SE	SE	SE	SE	SSE	SSE	S	S	S	S	SSW	SSW	SW	SW	WSW	WSW	WSW	W	W	W	W	W	W	W	SE	SSE	SSE	SSE	S	S	S	S	SSW	SSW
63/64	4	5	6	8	10	12	13	13	12	10	10	9	9	8	8	8	7	7	6	6	6	6	5	4	4	5	6	8	10	12	13	13	12	11	10	10
	SE	SE	SE	SE	SE	SE	SSE	SSE	S	S	S	S	SSW	SSW	SW	SW	WSW	WSW	WSW	W	W	W	W	W	ESE	SE	SSE	SSE	SSE	S	S	S	S	SSW	SSW	
51/52	4	5	5	7	9	11	12	12	11	10	9	9	8	8	7	7	6	6	6	6	6	6	5	4	4	5	6	7	10	11	12	12	11	10	10	10
	SE	SE	SE	SE	SE	SE	SSE	SSE	S	S	S	S	SSW	SSW	SW	SW	WSW	WSW	WSW	W	W	W	W	W	W	W	SE	SSE	SSE	SSE	S	S	S	S	SSW	SSW
37/38	4	5	5	7	9	9	10	11	10	8	8	8	8	7	7	6	6	6	6	6	6	6	5	4	4	5	6	7	9	10	11	11	10	9	9	9
	SSE	SE	SE	SE	SE	SE	SSE	SSE	S	S	S	S	SSW	SSW	SSW	SW	WSW	WSW	WSW	W	W	W	W	W	W	W	SE	SSE	SSE	SSE	S	S	S	S	SSW	SSW
25/26	4	5	5	7	8	8	9	9	8	7	7	7	6	6	6	5	5	5	5	5	5	6	5	4	4	5	6	7	8	9	9	9	8	8	8	8
	SSE	SE	SE	SE	SE	SE	SSE	SSE	S	S	S	S	SSW	SSW	SSW	SW	WSW	WSW	WSW	W	W	W	W	W	W	W	SE	SSE	SSE	SSE	S	S	S	S	SSW	SSW
11/12	4	5	5	6	7	8	8	8	7	7	7	7	6	6	6	6	6	6	6	6	6	6	6	5	4	5	6	7	8	9	9	9	8	8	8	8
	SSE	SSE	SE	SE	SE	SE	SSE	SSE	S	S	S	S	SSW	SSW	SSW	SW	WSW	WSW	WSW	W	W	W	W	W	W	W	SE	SSE	SSE	SSE	S	S	S	S	SSW	SSW
1 & 2 Bravo	3	3	4	5	6	7	8	9	9	8	8	8	8	7	7	7	7	7	7	7	7	7	7	6	6	4	5	7	8	9	9	10	10	9	9	10
	SSE	SSE	SE	SE	SE	SE	SSE	SSE	S	S	S	S	S	SSW	SSW	SW	SW	WSW	WSW	W	W	W	W	W	W	W	W	SE	SSE	SSE	SSE	S	S	S	S	SSW

NOTE: This is automated data that may/may not agree with the official BAM thinking that's found on the daily slides. This data should be used as a guide only

Forecast Discussion

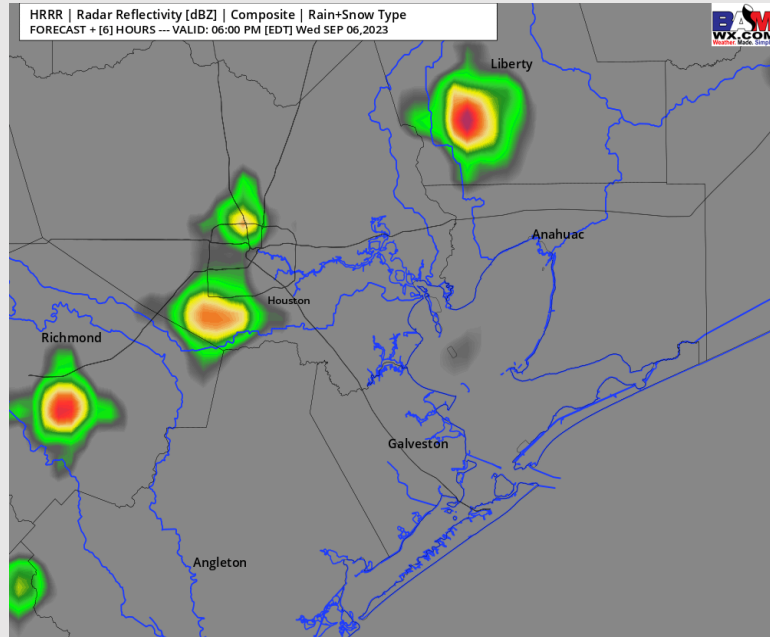
Precip: Favoring a 20% chance for an isolated shower/storm between 4 - 7 PM. Then favoring dry conditions through the rest of the night.

Wind: Favoring winds to be out of South through the rest of the day. **N of Morgan's Point:** winds gradually increasing to 10-15 kts. **S of Morgan's Point:** Winds ranging from 15-20 kts through the rest of the day. Gusts up to 22 kts possible for all stations.

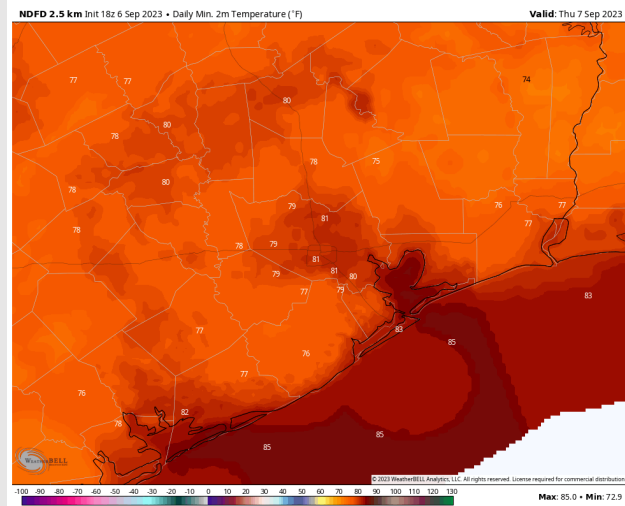
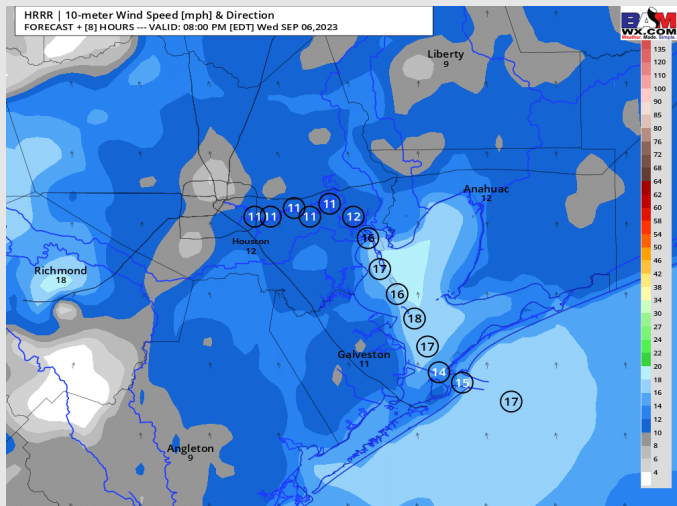
Low Temps: **S of Morgan's Point:** Mid to Upper 80s F. **N of Morgan's Point:** Upper 70s / Low 80s F

Visibility: No visibility concerns at this time.

Precip Image: 5 PM CT



Wind Speed:
7 PM CT



Low Temps
THU AM

Houston Pilots: Thu. 9/7/2023



Forecast Discussion

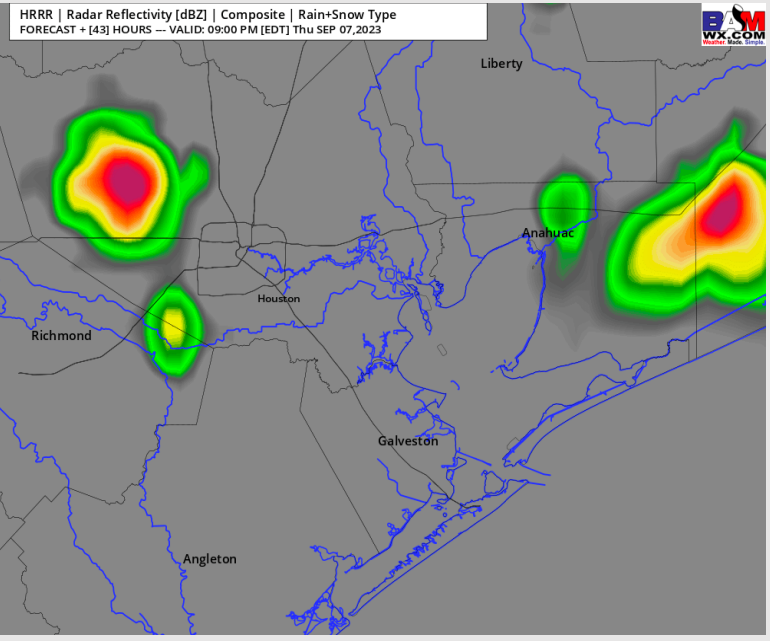
Precip: Favoring dry conditions for the majority of Thursday, with a slight (20%) chance for an afternoon shower or thunderstorm from 5 - 9 PM. A hit with one of these storms can produce a quick heavy local downpour.

Wind: Winds out of the W/SW will slowly veer out of the SSW by 2 PM and continue there the rest of the day. **N of Morgan's Point:** Wind speeds will start at 2 - 7 kts then increase to 7 - 12 kts by 5 PM. **S of Morgan's Point:** AM winds will range from 6 - 11 kts and will increase to 11 - 16 kts by 4 PM and continue the rest of the evening. **If caught under a PM thunderstorm, a few gusts of 25 - 28 kts are possible. (5 - 9 PM)**

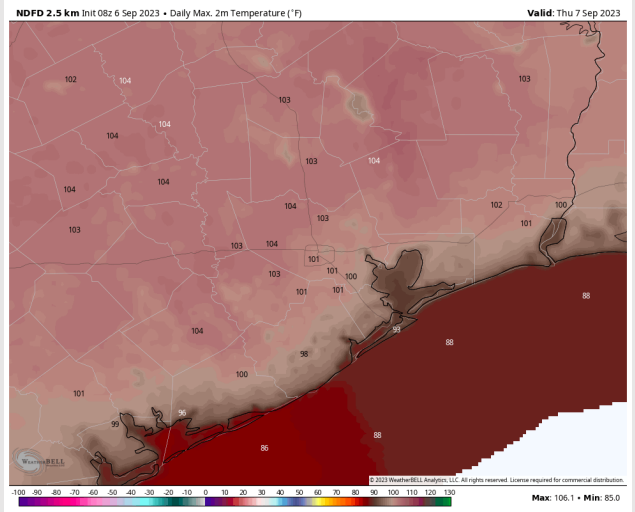
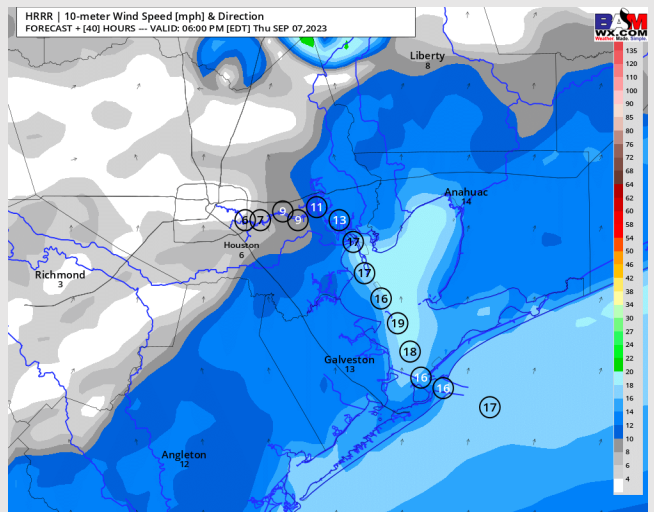
High Temps: **S of Morgan's Point:** Upper 80s F to near 90 F. **N of Morgan's Point:** Upper 90s F to Low 100 F.

Visibility: Not anticipating any fog issues at this time.

Precip Image: 8 PM CT



Wind Speed:
5 PM CT



High Temps
Thursday

Houston Pilots: Fri. 9/8/2023



Forecast Discussion

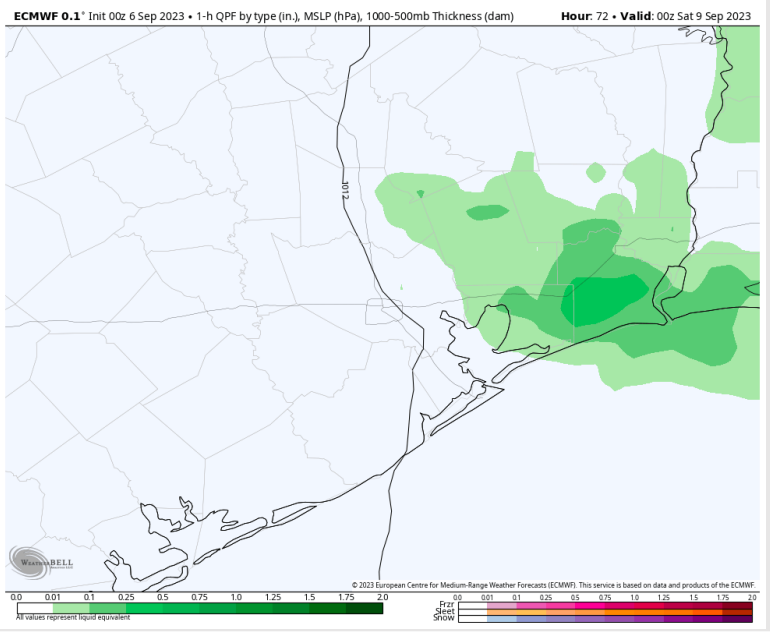
Precip: Lower confidence present but favoring the majority of Friday to stay dry outside of scattered showers/storms during the 5 - 8 PM (30%) timeframe. Thunderstorms will be dependent on a boundary to the NE of the bay.

Wind: Winds will be out of the SW through 4 PM before slowly veering counterclockwise out of the S/SE by 6 PM. **N of Morgan's Point:** 3-8 kts outside of a slight increase to 6-11 kts from 5-8 PM. **S of Morgan's Point:** 10-15 kts through 8 AM before decreasing to 6-11 kts until 4 PM. Speeds increase slightly to 9 - 14 kts until 9 PM before decreasing to 3-8 kts the rest of the evening.

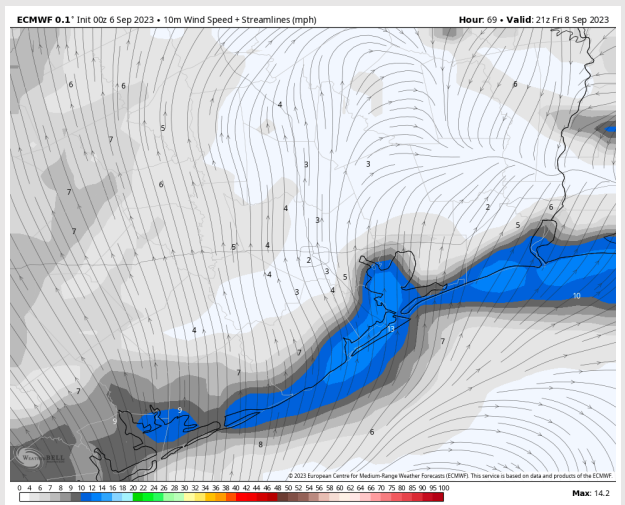
High Temps: **S of Morgan's Point:** Upper 80s/Low 90s F. **N of Morgan's Point:** Low 100s F.

Visibility: No visibility issues expected.

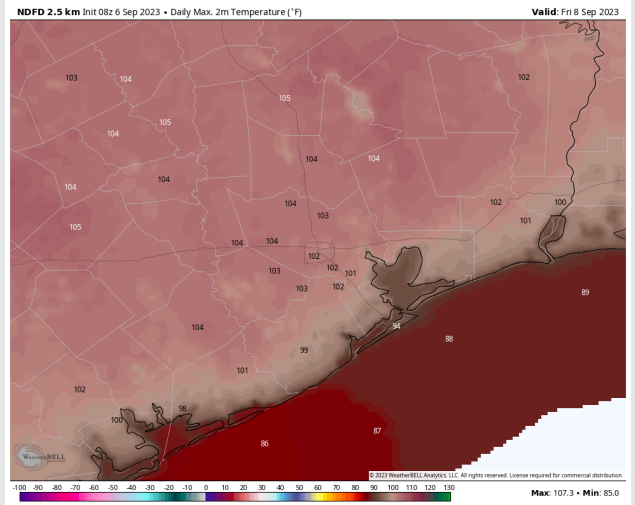
Precip Image: 7 PM CT



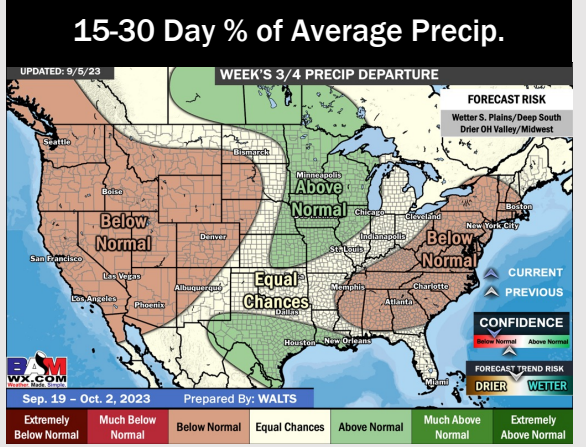
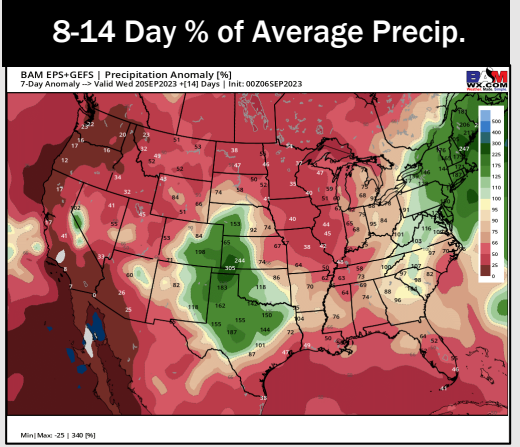
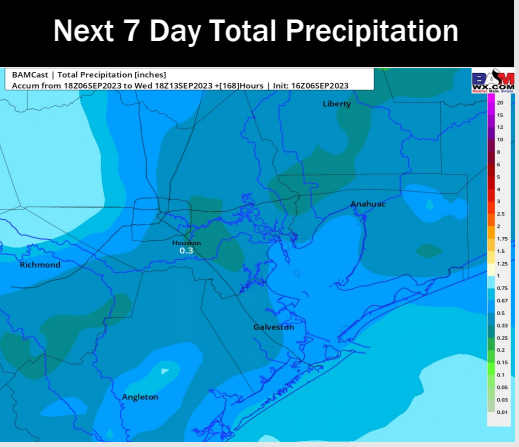
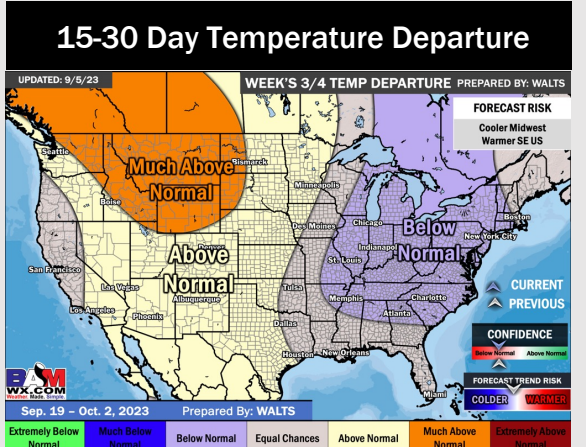
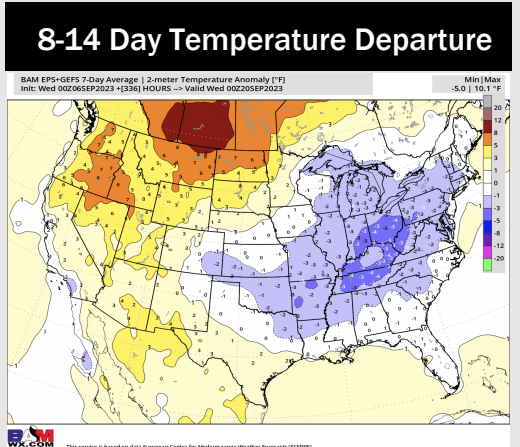
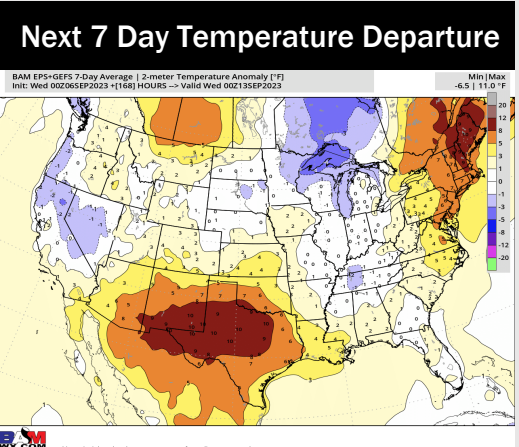
Wind Speed:
4 PM CT



High Temps
Friday



Houston Pilots: 9/6/23



- Low end rain chances will be at play through the weekend. Expecting temperatures to continue to remain above normal.
- Expecting below normal precipitation chances and slightly above normal temperatures for the week 2 timeframe.
- Near normal temperatures and above normal chances for precipitation are favored in the weeks 3/4 timeframe.