

Houston Pilots Forecast Package



Updated: 5:00 AM CT

Monday, August 21, 2023

Forecaster: Matt Griffin

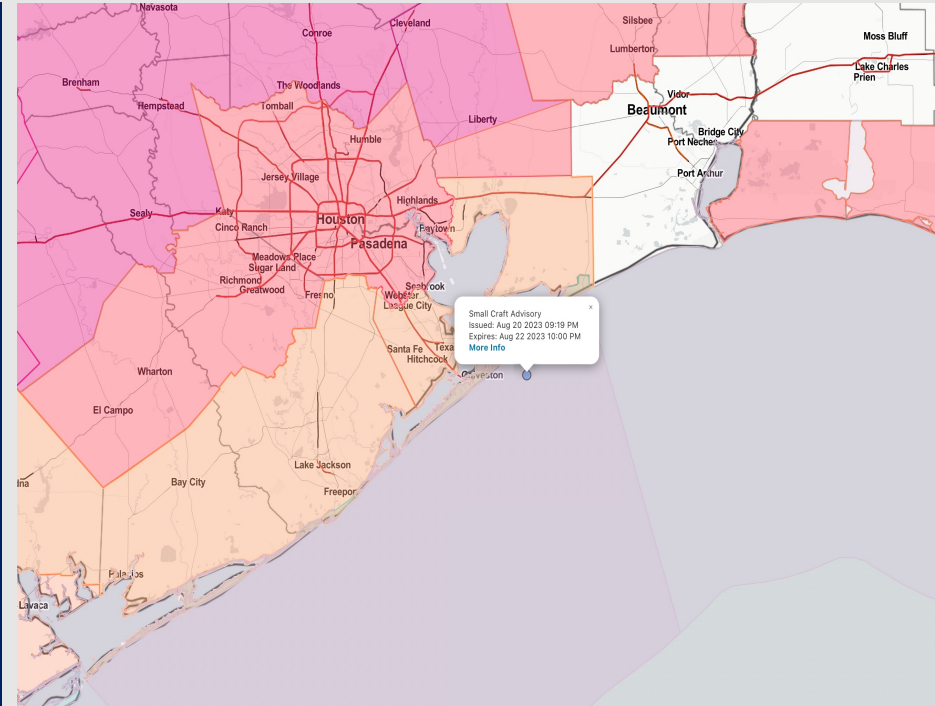
Weather Headlines

➤ [CLICK HERE FOR VIDEO UPDATE:](#)
[Video Update](#)

➤ Tropical system expected to stay south. However, wave heights near 6' will be possible, mainly into TUE AM.

➤ Bulk of precipitation chances look to go south. However, scattered storms will still be possible.

➤ A few minor precipitation chances exists later into the week with limited wind issues.



Radar/NWS Alerts: 5:00 AM CT



As always, please do not hesitate to reach out to us with any forecast questions via the chat option on the Weather Porthole or our on-call number, **(317)-560-8122** press 1 for forecast questions.

Houston Pilots Tropical Update



| Port Condition | 39 MPH Sustained Winds | 6 Foot Waves | Time Remaining/Trigger End |
|----------------|------------------------|--------------------|----------------------------|
| Victor | N/A | N/A | N/A |
| Whiskey | N/A | N/A | N/A |
| X-Ray | No | N/A | 4 AM CT MON |
| Yankee | N/A | 4 AM CT MON | 4 PM CT MON |
| Zulu | N/A | 4 PM CT MON | 1 PM CT TUE |

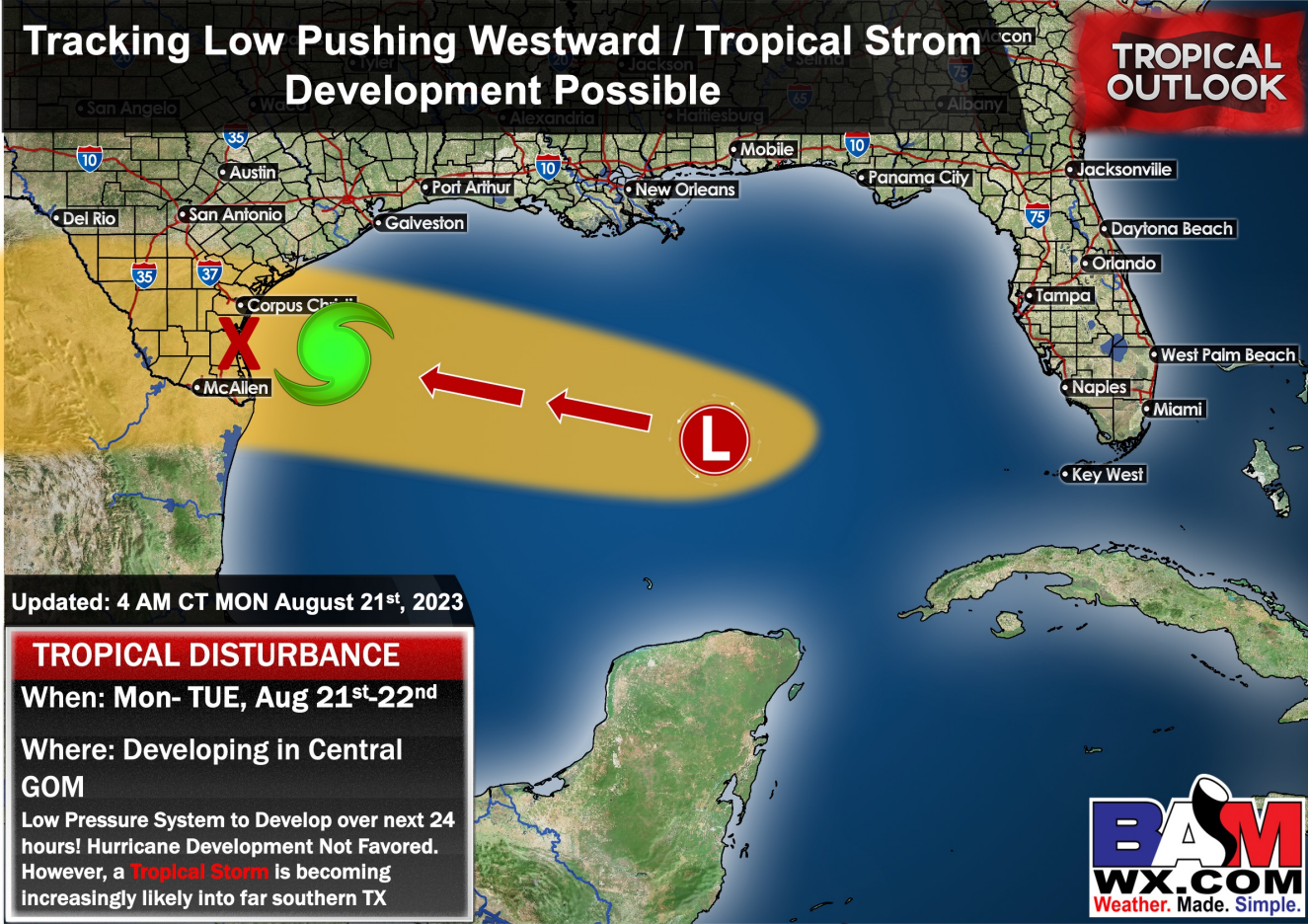
| Port Condition | Trigger Definition | Trigger Reached? |
|----------------|---|------------------|
| Victor | Hurricane entering/developing in Gulf of Mexico that's a threat to the area | No |
| Whiskey | 72 hours prior to predicted sustained winds of 39+ MPH | No |
| X-Ray | 48 hours prior to predicted sustained winds of 39+ MPH or 6' wave height | Yes |
| Yankee | 24 hours prior to predicted sustained winds of 39+ MPH or 6' wave height | Yes |
| Zulu | 12 hours prior to predicted sustained winds of 39+ MPH or 6' wave height | No |

- **Recent data has started to trend the 5-6' area for wave heights associated with TUE tropical storm further NW toward the HOU area.** While there is lower confidence the 6'+ wave height threshold is met for nearshore stations, data trends have made this a possibility we will need to continue to monitor.
- **The timing most at risk to see these increased wave heights would be 4 AM to 1 PM TUE.** The boarding station is at greatest risk to see these wave heights. **ALL OTHER STATIONS WILL REMAIN WELL BELOW 6' THRESHOLD.**
- There will be the risk that as this system develops and starts to move West toward the TX Coast, wave height data will start to trend lower once again, and the Yankee Trigger could be lifted tonight/tomorrow morning. (If holds, Zulu at 4 PM CT MON). **The core of the tropical system still will track further toward TX/MX border.**

Houston Pilots Tropical Update



AL91 INVEST Tropical System Track



Anticipating continued development of a tropical low over the 24 - 36 hours. A Tropical storm will be possible. Currently not favoring a hurricane to form.

Regardless, this system is anticipated to make **landfall well south of the Houston area** with very good model agreement/ consensus. Current timing is around 7 - 10 AM TUE morning for this to occur.

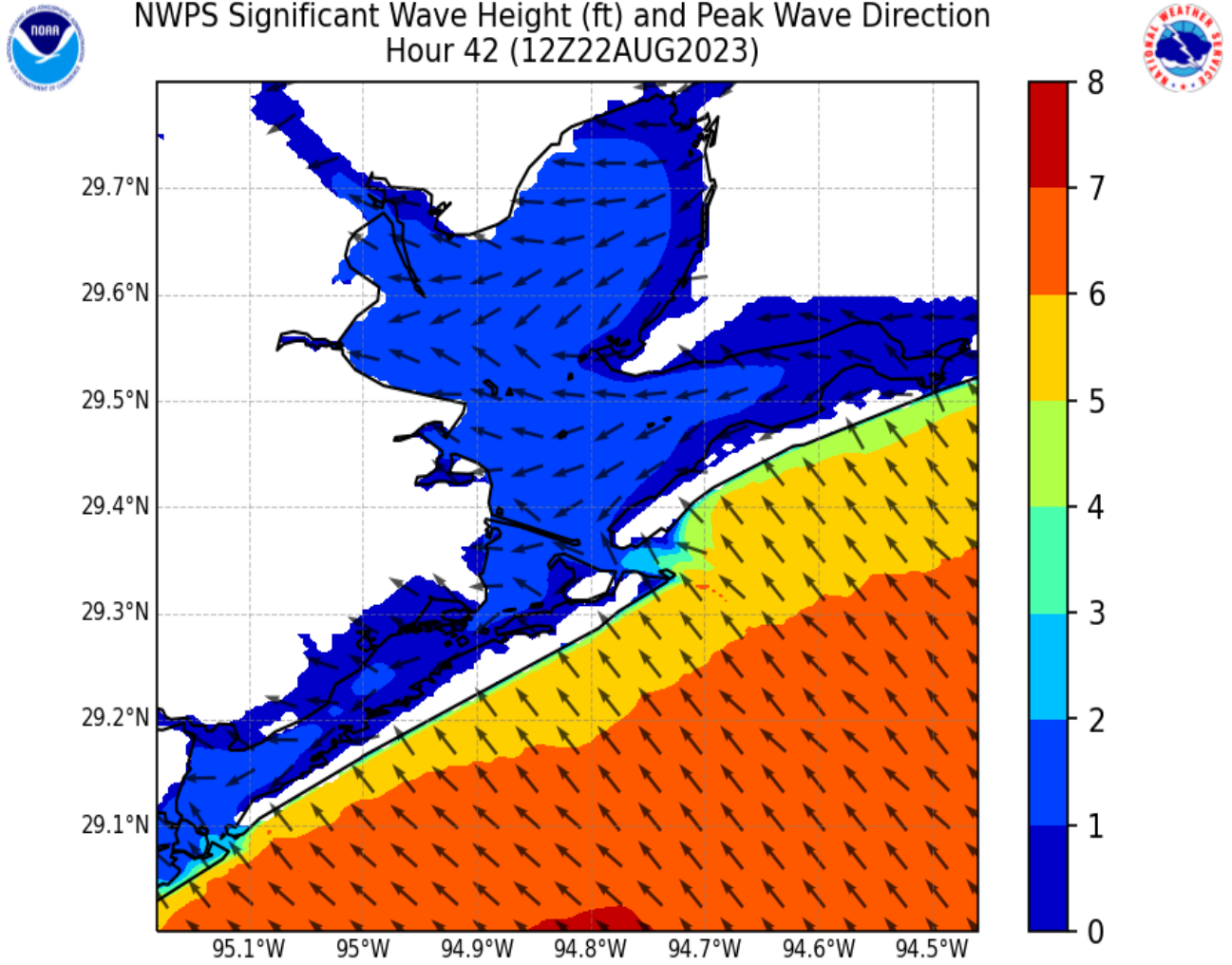
Winds at Houston will be elevated from this system allowing for sustained winds around 20 - 25 knots in general with gusts of 27 knots to locally 30 knots.

Of greatest concern will be wave heights. Significant Wave heights will be flirting with the 6' threshold. With current anticipation for a general 5 - 6' wave heights tomorrow morning/ afternoon (more info on the following slide).



Houston Pilots Tropical Update

Significant Wave Heights at 7 AM CT TUE



The image to the left shows the peak wave heights and peak wave direction associated with the incoming tropical system.

The best time frame for peak wave heights in the 5' - 6' range are 4 AM TUE - 1 PM TUE.

Houston Pilots Visibility Chart (miles)



Forecast Confidence

Above Normal

Below Normal

| Time | Mon 4am | Mon 5am | Mon 6am | Mon 7am | Mon 8am | Mon 9am | Mon 10am | Mon 11am | Mon 12pm | Mon 1pm | Mon 2pm | Mon 3pm | Mon 4pm | Mon 5pm | Mon 6pm | Mon 7pm | Mon 8pm | Mon 9pm | Mon 10pm | Mon 11pm | Tue 12am | Tue 1am | Tue 2am | Tue 3am | Tue 4am | Tue 5am | Tue 6am | Tue 7am | Tue 8am | Tue 9am | Tue 10am | Tue 11am | Tue 12pm | Tue 1pm | Tue 2pm | Tue 3pm | |
|-------------------|---------|---------|---------|---------|---------|---------|----------|----------|----------|---------|---------|---------|---------|---------|---------|---------|---------|---------|----------|----------|----------|---------|---------|---------|---------|---------|---------|---------|---------|---------|----------|----------|----------|---------|---------|---------|----|
| 610 Bridge | 10 | 10 | 10 | 10 | 10 | 10 | 10 | 10 | 10 | 10 | 10 | 10 | 10 | 10 | 10 | 10 | 10 | 10 | 10 | 10 | 10 | 10 | 10 | 10 | 10 | 10 | 10 | 7 | 10 | 10 | 10 | 10 | 10 | 10 | 10 | 10 | 10 |
| Kinder 1 | 10 | 10 | 10 | 10 | 10 | 10 | 10 | 10 | 10 | 10 | 10 | 10 | 10 | 10 | 10 | 10 | 10 | 10 | 10 | 10 | 10 | 10 | 10 | 10 | 10 | 10 | 10 | 9 | 10 | 10 | 10 | 10 | 10 | 10 | 10 | 10 | 10 |
| Greens Bayou | 10 | 10 | 10 | 10 | 10 | 10 | 10 | 10 | 10 | 10 | 10 | 10 | 10 | 10 | 10 | 10 | 10 | 10 | 10 | 10 | 10 | 10 | 10 | 10 | 10 | 10 | 10 | 10 | 10 | 10 | 10 | 10 | 10 | 10 | 10 | 10 | 10 |
| Shell Crude | 10 | 10 | 10 | 10 | 10 | 10 | 10 | 10 | 10 | 10 | 10 | 10 | 10 | 10 | 10 | 10 | 10 | 10 | 10 | 10 | 10 | 10 | 10 | 10 | 10 | 10 | 10 | 10 | 10 | 10 | 10 | 10 | 10 | 10 | 10 | 10 | 10 |
| Lynchburg Ferries | 10 | 10 | 10 | 10 | 10 | 10 | 10 | 10 | 10 | 10 | 10 | 10 | 10 | 10 | 10 | 10 | 10 | 10 | 10 | 10 | 10 | 10 | 10 | 10 | 10 | 10 | 10 | 10 | 10 | 10 | 10 | 10 | 10 | 10 | 10 | 10 | 10 |
| Exxon 3 | 10 | 10 | 10 | 10 | 10 | 10 | 10 | 10 | 10 | 10 | 10 | 10 | 10 | 10 | 10 | 10 | 10 | 10 | 10 | 10 | 10 | 10 | 10 | 10 | 10 | 10 | 10 | 10 | 10 | 10 | 10 | 10 | 10 | 10 | 10 | 10 | 10 |
| Morgans Point | 10 | 10 | 10 | 10 | 10 | 10 | 10 | 10 | 10 | 10 | 10 | 10 | 10 | 10 | 10 | 10 | 10 | 10 | 10 | 10 | 10 | 10 | 10 | 10 | 10 | 10 | 10 | 10 | 10 | 10 | 10 | 10 | 10 | 10 | 10 | 10 | 10 |
| 75/76 | 10 | 10 | 10 | 10 | 10 | 10 | 10 | 10 | 10 | 10 | 10 | 10 | 10 | 10 | 10 | 10 | 10 | 10 | 10 | 10 | 10 | 10 | 10 | 10 | 10 | 10 | 10 | 10 | 10 | 10 | 10 | 10 | 10 | 10 | 10 | 10 | 10 |
| 63/64 | 10 | 10 | 10 | 10 | 10 | 10 | 10 | 10 | 10 | 10 | 10 | 10 | 10 | 10 | 10 | 10 | 10 | 10 | 10 | 10 | 10 | 10 | 10 | 10 | 10 | 10 | 10 | 10 | 10 | 10 | 10 | 10 | 10 | 10 | 10 | 10 | 10 |
| 51/52 | 10 | 10 | 10 | 10 | 10 | 10 | 10 | 10 | 10 | 10 | 10 | 10 | 10 | 10 | 10 | 10 | 10 | 10 | 10 | 10 | 10 | 10 | 10 | 10 | 10 | 10 | 10 | 10 | 10 | 10 | 10 | 10 | 10 | 10 | 10 | 10 | 10 |
| 37/38 | 10 | 10 | 10 | 10 | 10 | 10 | 10 | 10 | 10 | 10 | 10 | 10 | 10 | 10 | 10 | 10 | 10 | 10 | 10 | 10 | 10 | 10 | 10 | 10 | 10 | 10 | 10 | 10 | 10 | 10 | 10 | 10 | 10 | 10 | 10 | 10 | 10 |
| 25/26 | 10 | 10 | 10 | 10 | 10 | 10 | 10 | 10 | 10 | 10 | 10 | 10 | 10 | 10 | 10 | 10 | 10 | 10 | 10 | 10 | 10 | 10 | 10 | 10 | 10 | 10 | 10 | 10 | 10 | 10 | 10 | 10 | 10 | 10 | 10 | 10 | 10 |
| 11/12 | 10 | 10 | 10 | 10 | 10 | 10 | 10 | 10 | 10 | 10 | 10 | 10 | 10 | 10 | 10 | 10 | 10 | 10 | 10 | 10 | 10 | 10 | 10 | 10 | 10 | 10 | 10 | 10 | 10 | 10 | 10 | 10 | 10 | 10 | 10 | 10 | 10 |
| 1 & 2 Bravo | 10 | 10 | 10 | 10 | 10 | 10 | 10 | 10 | 10 | 10 | 10 | 10 | 10 | 10 | 10 | 10 | 10 | 10 | 10 | 10 | 10 | 10 | 10 | 10 | 10 | 10 | 10 | 10 | 10 | 10 | 10 | 10 | 10 | 10 | 10 | 10 | 10 |

NOTE: This is automated data that may/may not agree with the official BAM thinking that's found on the daily slides or special visibility report slides. This data should be used as a guide only

Houston Pilots Wind Chart



Forecast Confidence



Example

Sustained wind 13 Knots
Gusts 18 Knots
Wind from the N

WS: 13
G:18
N

| Time Knots | Mon 4am | Mon 5am | Mon 6am | Mon 7am | Mon 8am | Mon 9am | Mon 10am | Mon 11am | Mon 12pm | Mon 1pm | Mon 2pm | Mon 3pm | Mon 4pm | Mon 5pm | Mon 6pm | Mon 7pm | Mon 8pm | Mon 9pm | Mon 10pm | Mon 11pm | Tue 12am | Tue 1am | Tue 2am | Tue 3am | Tue 4am | Tue 5am | Tue 6am | Tue 7am | Tue 8am | Tue 9am | Tue 10am | Tue 11am | Tue 12pm | Tue 1pm | Tue 2pm | Tue 3pm |
|-------------------|---------|---------|---------|---------|---------|---------|----------|----------|----------|---------|---------|---------|---------|---------|---------|---------|---------|---------|----------|----------|----------|---------|---------|---------|---------|---------|---------|---------|---------|---------|----------|----------|----------|---------|---------|---------|
| 610 Bridge | 3 | 1 | 0 | 1 | 2 | 4 | 6 | 8 | 9 | 10 | 11 | 10 | 11 | 11 | 11 | 11 | 12 | 11 | 11 | 10 | 9 | 9 | 9 | 8 | 8 | 8 | 9 | 9 | 10 | 10 | 11 | 12 | 12 | 14 | 13 | 12 |
| | 5 | 2 | 1 | 1 | 4 | 5 | 9 | 12 | 14 | 16 | 16 | 16 | 16 | 16 | 17 | 17 | 17 | 18 | 17 | 16 | 15 | 14 | 14 | 13 | 12 | 12 | 13 | 13 | 16 | 15 | 16 | 18 | 19 | 21 | 20 | 18 |
| | S | SSE | E | NNE | NE | NE | ENE | ENE | E | E | E | ESE | ESE | ESE | ESE | ESE | ESE | ESE | ESE | E | E | E | E | E | ENE | ENE | ENE | ENE | E | E | ESE | ESE | ESE | ESE | ESE | |
| Kinder 1 | 3 | 1 | 0 | 1 | 2 | 4 | 6 | 8 | 9 | 10 | 10 | 10 | 10 | 11 | 11 | 11 | 12 | 11 | 11 | 10 | 9 | 9 | 9 | 8 | 8 | 8 | 9 | 9 | 10 | 10 | 11 | 12 | 12 | 13 | 13 | 12 |
| | 4 | 2 | 1 | 1 | 4 | 6 | 9 | 12 | 14 | 16 | 16 | 16 | 16 | 16 | 17 | 17 | 17 | 18 | 17 | 16 | 15 | 14 | 14 | 13 | 12 | 12 | 13 | 13 | 15 | 15 | 16 | 17 | 18 | 20 | 19 | 18 |
| | S | SSE | ENE | NNE | NE | NE | ENE | E | E | E | E | ESE | ESE | ESE | ESE | ESE | SE | ESE | ESE | E | E | E | E | E | ENE | ENE | ENE | ENE | E | E | ESE | ESE | ESE | ESE | ESE | |
| Greens Bayou | 2 | 1 | 0 | 1 | 3 | 4 | 6 | 8 | 9 | 10 | 10 | 10 | 10 | 11 | 11 | 11 | 12 | 11 | 11 | 10 | 9 | 9 | 8 | 8 | 8 | 8 | 8 | 10 | 10 | 10 | 11 | 12 | 13 | 13 | 13 | |
| | 4 | 2 | 1 | 1 | 4 | 6 | 9 | 12 | 14 | 15 | 15 | 16 | 16 | 16 | 17 | 17 | 18 | 17 | 16 | 15 | 14 | 14 | 13 | 12 | 11 | 12 | 13 | 13 | 15 | 15 | 16 | 17 | 18 | 19 | 19 | 18 |
| | S | SE | ENE | NNE | NE | NE | ENE | E | E | E | E | ESE | ESE | ESE | ESE | ESE | SE | ESE | ESE | ESE | E | E | E | E | ENE | ENE | ENE | ENE | E | E | ESE | ESE | ESE | ESE | ESE | |
| Shell Crude | 3 | 1 | 0 | 1 | 3 | 4 | 6 | 8 | 9 | 10 | 10 | 10 | 10 | 11 | 11 | 12 | 12 | 11 | 11 | 10 | 10 | 9 | 9 | 8 | 8 | 8 | 9 | 9 | 10 | 10 | 11 | 12 | 13 | 13 | 13 | |
| | 4 | 2 | 1 | 2 | 4 | 6 | 9 | 12 | 14 | 15 | 15 | 16 | 16 | 16 | 17 | 17 | 17 | 18 | 17 | 17 | 15 | 14 | 14 | 13 | 12 | 12 | 13 | 13 | 15 | 15 | 16 | 17 | 17 | 19 | 18 | 18 |
| | S | SE | NE | NNE | NE | NE | ENE | E | E | E | ESE | ESE | ESE | ESE | ESE | SE | ESE | ESE | ESE | E | E | E | E | E | ENE | ENE | ENE | ENE | E | E | ESE | ESE | ESE | ESE | ESE | |
| Lynchburg Ferries | 3 | 2 | 1 | 2 | 3 | 5 | 6 | 8 | 9 | 10 | 11 | 11 | 11 | 13 | 13 | 13 | 12 | 12 | 11 | 10 | 10 | 10 | 9 | 9 | 8 | 8 | 9 | 9 | 10 | 10 | 11 | 12 | 13 | 13 | 13 | |
| | 4 | 2 | 2 | 2 | 5 | 7 | 9 | 12 | 14 | 15 | 15 | 16 | 16 | 17 | 17 | 18 | 17 | 17 | 16 | 15 | 14 | 14 | 13 | 12 | 12 | 12 | 13 | 14 | 14 | 15 | 16 | 17 | 18 | 18 | 18 | |
| | S | SE | NE | NNE | NE | NE | ENE | E | E | E | E | ESE | ESE | ESE | SE | SE | ESE | ESE | ESE | E | E | E | E | E | ENE | ENE | ENE | ENE | E | E | ESE | ESE | ESE | ESE | SE | |
| Exxon 3 | 4 | 2 | 2 | 2 | 4 | 5 | 7 | 8 | 10 | 10 | 11 | 12 | 12 | 13 | 13 | 13 | 13 | 12 | 12 | 11 | 11 | 10 | 10 | 10 | 9 | 10 | 10 | 10 | 10 | 11 | 12 | 13 | 13 | 13 | 14 | |
| | 5 | 3 | 3 | 3 | 5 | 7 | 10 | 12 | 13 | 15 | 16 | 16 | 16 | 18 | 18 | 18 | 18 | 17 | 17 | 15 | 15 | 14 | 13 | 13 | 13 | 13 | 13 | 14 | 14 | 15 | 16 | 16 | 17 | 17 | 18 | 18 |
| | S | SSE | SE | NNE | NE | NE | ENE | E | E | E | ESE | ESE | ESE | ESE | SE | SE | ESE | ESE | ESE | E | E | E | E | E | ENE | ENE | ENE | ENE | E | E | ESE | ESE | ESE | SE | SE | |
| Morgans Point | 4 | 3 | 3 | 3 | 4 | 6 | 8 | 9 | 10 | 11 | 12 | 13 | 14 | 14 | 15 | 15 | 14 | 14 | 13 | 13 | 12 | 12 | 12 | 12 | 12 | 13 | 12 | 12 | 12 | 13 | 13 | 14 | 14 | 15 | | |
| | 5 | 4 | 3 | 4 | 6 | 8 | 10 | 12 | 13 | 15 | 16 | 17 | 17 | 18 | 18 | 18 | 18 | 18 | 18 | 16 | 16 | 16 | 16 | 15 | 15 | 16 | 16 | 16 | 16 | 16 | 17 | 17 | 18 | 18 | 19 | |
| | S | S | SSW | NE | NE | NE | ENE | ENE | E | E | ESE | ESE | ESE | ESE | SE | ESE | ESE | ESE | ESE | E | E | E | E | E | ENE | ENE | E | ENE | E | E | ESE | ESE | ESE | SE | SE | |
| 75/76 | 5 | 3 | 3 | 4 | 6 | 8 | 8 | 9 | 10 | 11 | 13 | 15 | 14 | 16 | 17 | 17 | 17 | 18 | 17 | 16 | 16 | 16 | 16 | 17 | 17 | 17 | 17 | 17 | 17 | 16 | 16 | 16 | 16 | 16 | 16 | |
| | 5 | 4 | 3 | 5 | 7 | 9 | 10 | 12 | 13 | 15 | 16 | 17 | 18 | 19 | 19 | 19 | 20 | 20 | 19 | 18 | 18 | 18 | 18 | 19 | 19 | 19 | 19 | 19 | 18 | 18 | 18 | 19 | 19 | 20 | 20 | |
| | S | S | SE | ENE | NE | NE | ENE | ENE | E | ESE | ESE | ESE | ESE | ESE | ESE | ESE | ESE | ESE | ESE | E | E | E | E | E | E | E | E | E | E | E | ESE | ESE | ESE | ESE | SE | |
| 63/64 | 4 | 3 | 3 | 4 | 7 | 8 | 9 | 9 | 10 | 12 | 14 | 15 | 14 | 16 | 17 | 18 | 18 | 19 | 18 | 18 | 18 | 18 | 18 | 18 | 18 | 19 | 19 | 19 | 18 | 18 | 18 | 17 | 17 | 16 | 17 | |
| | 5 | 3 | 3 | 5 | 7 | 9 | 10 | 12 | 13 | 15 | 17 | 18 | 17 | 18 | 19 | 20 | 20 | 20 | 20 | 20 | 20 | 20 | 20 | 20 | 20 | 20 | 21 | 21 | 21 | 20 | 20 | 20 | 19 | 19 | 19 | |
| | S | SSW | ENE | NE | NE | NE | ENE | ENE | E | ESE | ESE | ESE | ESE | ESE | ESE | ESE | ESE | ESE | ESE | E | E | E | E | E | E | E | E | E | E | E | ESE | ESE | ESE | ESE | ESE | |
| 51/52 | 3 | 2 | 2 | 4 | 6 | 8 | 9 | 9 | 11 | 13 | 14 | 15 | 14 | 15 | 17 | 18 | 17 | 18 | 18 | 17 | 18 | 18 | 18 | 18 | 18 | 19 | 19 | 19 | 18 | 18 | 18 | 17 | 17 | 16 | 16 | |
| | 4 | 3 | 3 | 5 | 7 | 9 | 10 | 12 | 13 | 16 | 17 | 17 | 17 | 17 | 19 | 20 | 19 | 20 | 20 | 19 | 20 | 20 | 20 | 20 | 20 | 20 | 20 | 20 | 20 | 20 | 20 | 19 | 19 | 18 | 19 | 18 |
| | S | S | ENE | NE | NE | NE | ENE | ENE | E | ESE | ESE | ESE | ESE | ESE | ESE | ESE | ESE | ESE | ESE | E | E | E | E | E | E | E | E | E | E | E | ESE | ESE | ESE | ESE | ESE | |
| 37/38 | 3 | 2 | 2 | 4 | 6 | 8 | 9 | 10 | 13 | 14 | 15 | 14 | 14 | 15 | 16 | 17 | 17 | 18 | 18 | 18 | 18 | 18 | 18 | 18 | 18 | 18 | 19 | 18 | 18 | 18 | 17 | 17 | 16 | 16 | 16 | |
| | 3 | 2 | 3 | 4 | 7 | 9 | 10 | 12 | 15 | 16 | 17 | 17 | 16 | 17 | 18 | 19 | 19 | 20 | 20 | 20 | 20 | 20 | 20 | 20 | 20 | 20 | 21 | 20 | 20 | 20 | 20 | 20 | 19 | 19 | 18 | 17 |
| | S | SSE | ENE | NNE | NE | NE | ENE | ENE | E | E | ESE | ESE | ESE | ESE | ESE | ESE | ESE | E | E | E | E | E | E | E | E | E | E | E | E | E | ESE | ESE | ESE | ESE | ESE | |
| 25/26 | 2 | 2 | 2 | 4 | 6 | 8 | 9 | 10 | 13 | 14 | 14 | 13 | 13 | 13 | 14 | 15 | 16 | 16 | 17 | 17 | 18 | 17 | 17 | 17 | 17 | 17 | 18 | 17 | 17 | 17 | 17 | 16 | 16 | 15 | 15 | 14 |
| | 3 | 2 | 3 | 4 | 7 | 9 | 11 | 12 | 15 | 16 | 16 | 16 | 16 | 17 | 18 | 18 | 19 | 19 | 20 | 20 | 20 | 20 | 20 | 20 | 20 | 20 | 20 | 20 | 20 | 19 | 18 | 18 | 17 | 17 | 16 | |
| | SSE | E | NNE | NE | NE | NE | ENE | ENE | E | E | E | ESE | ESE | ESE | ESE | ESE | ESE | ESE | ESE | E | E | E | E | E | E | E | E | E | E | E | E | E | E | ESE | ESE | |
| 11/12 | 3 | 2 | 3 | 4 | 7 | 8 | 10 | 11 | 13 | 13 | 14 | 13 | 13 | 13 | 14 | 15 | 16 | 16 | 17 | 17 | 18 | 17 | 17 | 18 | 18 | 18 | 17 | 17 | 17 | 17 | 15 | 16 | 15 | 14 | 14 | |
| | 3 | 3 | 4 | 5 | 7 | 10 | 11 | 13 | 15 | 15 | 16 | 16 | 16 | 17 | 18 | 18 | 20 | 19 | 21 | 20 | 20 | 20 | 20 | 20 | 20 | 20 | 20 | 20 | 20 | 19 | 18 | 18 | 17 | 16 | 16 | |
| | SSE | E | NE | NE | NE | NE | ENE | ENE | ENE | E | E | E | E | ESE | ESE | ESE | ESE | ESE | ESE | E | E | E | E | E | E | E | E | E | E | ESE | ESE | ESE | ESE | ESE | ESE | |
| 1 & 2 Bravo | 3 | 3 | 4 | 6 | 9 | 10 | 12 | 14 | 16 | 15 | 15 | 14 | 14 | 14 | 17 | 18 | 19 | 20 | 21 | 21 | 22 | 21 | 21 | 22 | 22 | 22 | 21 | 21 | 20 | 20 | 18 | 18 | 17 | 16 | 15 | |
| | 5 | 4 | 5 | 7 | 9 | 11 | 13 | 15 | 17 | 16 | 16 | 16 | 15 | 17 | 19 | 19 | 21 | 22 | 22 | 23 | 24 | 23 | 23 | 23 | 23 | 24 | 23 | 23 | 22 | 22 | 19 | 19 | 18 | 17 | 16 | |
| | SSE | ENE | NE | NE | NE | ENE | ENE | ENE | ENE | ENE | E | E | E | E | E | E | E | E | E | E | E | E | E | E | E | E | E | E | E | ESE | ESE | ESE | ESE | ESE | ESE | |

NOTE: This is automated data that may/may not agree with the official BAM thinking that's found on the daily slides. This data should be used as a guide only

Houston Pilots: Mon. 8/21/2023



Forecast Discussion

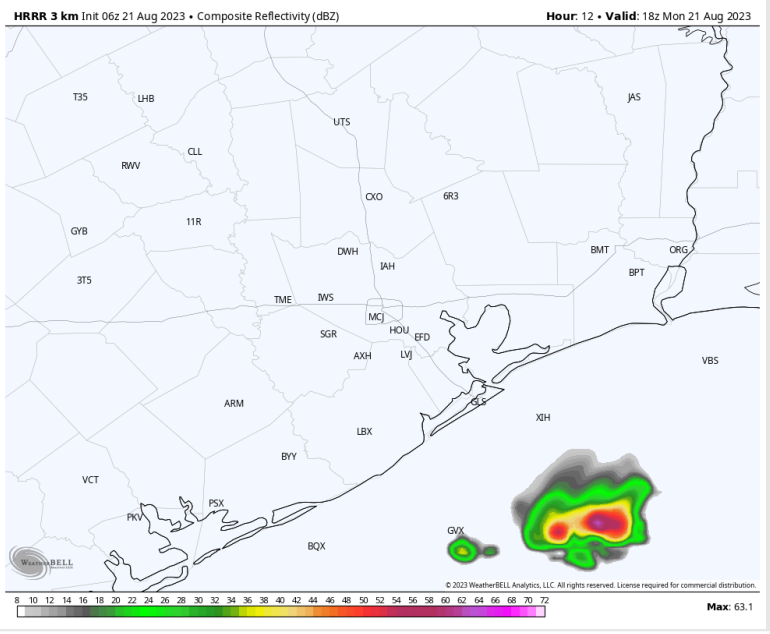
Precip: Bulk of storm/ rain activity is expected to stay mostly south of HOU today. Will include a 10% chance from 1 PM – 8 PM of a passing storm. While very isolated chances will be possible beyond that, again favor the bulk to stay south.

Wind: Southerly winds will gradually give way to ENE winds around 11 AM – 12 PM becoming sustained around 9 -13 MPH at the boarding station and 7 – 11 knots elsewhere. Winds will then gradually shift out of the ESE into the afternoon/ evening with a notable uptick in winds after 7 PM CT. By 10 PM CT winds at the boarding station are expected to be sustained around 17 – 21 with gusts of 25 to locally 30 knots possible. Sustained winds from the ESE will continue to build into TUE AM. Between Morgan's point and the boarding station, sustained winds are expected to be around 13 – 17 knots sustained with gusts near 25 MPH by 10 PM CT. Winds will be lighter for points north.

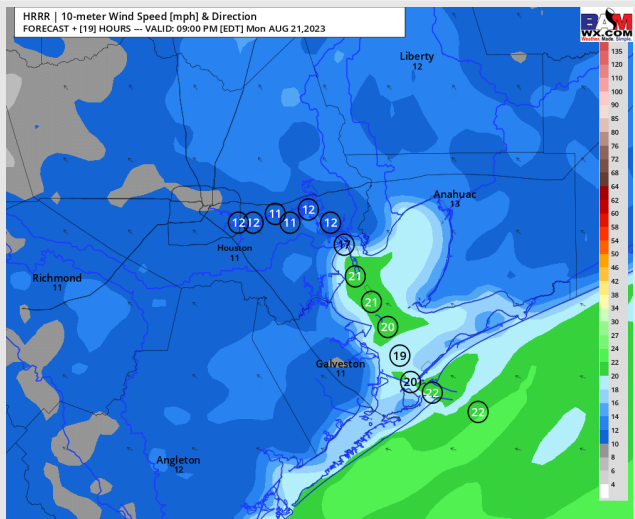
High Temps: S of Morgan's Point: Mid 90's F. N of Morgan's Point: Upper 90s/low 100s F.

Visibility: No visibility issues outside of isolated storms.

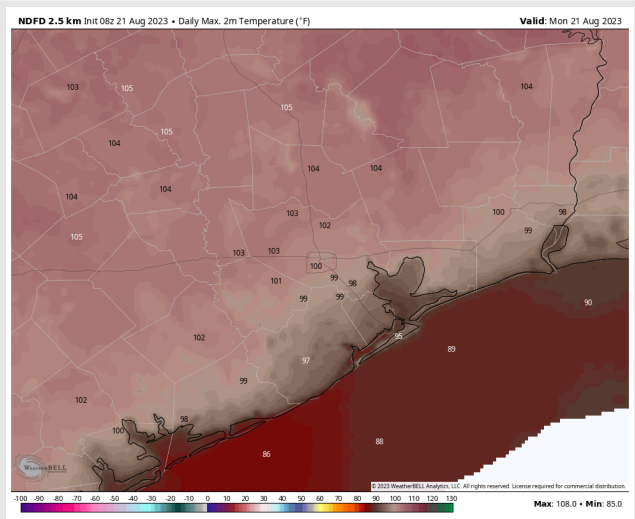
Precip Image: 1 PM CT



Wind Speed:
8 PM CT



High Temps
Today



Houston Pilots: Tue. 8/22/2023



Forecast Discussion

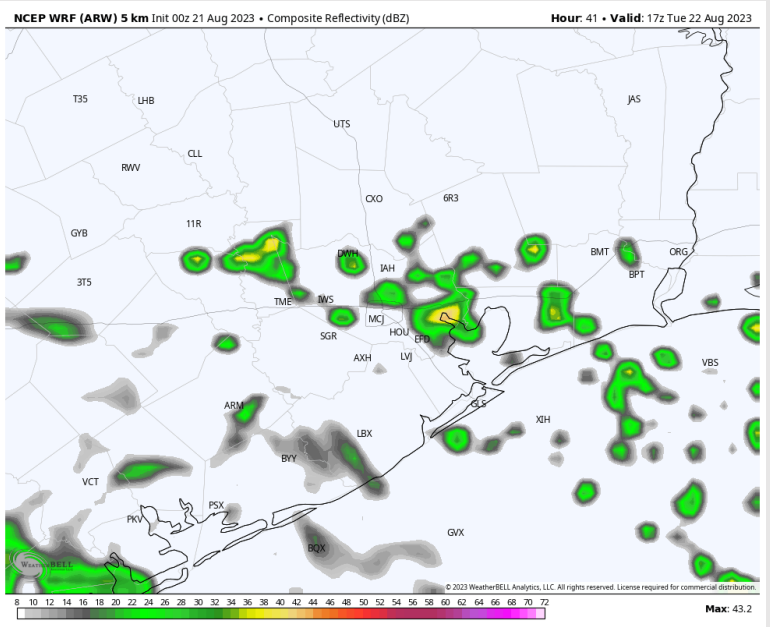
Precip: Continue to favor the bulk of storms to stay south of Houston. However, a few scattered storms will be possible in the AM (around 20%). Into the afternoon about 25% chances exist through about 7 – 8 PM.

Wind: ESE winds continue to drive into the HOU area through the morning hours of TUE. Towards the boarding station, winds are expected to be 17 – 22 knots sustained with gusts near 26 – 30 knots. Between Morgan’s point and and the boarding station, sustained winds are expected to generally be 13 – 17 knots sustained with gusts up to 21 – 26 knots and will have more of an easterly component. Winds into the afternoon will start to gradually wane after 1 – 3 PM for locations south of Morgan’s Point (likely pick up for locations north of Morgan’s point into the afternoon). By 6 PM, winds are expected to be from the SE sustained around 13 – 17 knots for locations south of Morgan’s Point with gusts near 20 knots possible. Winds north of Morgan’s Point by 7 PM look to be sustained near 13 – 15 knots with gusts up to 20 knots.

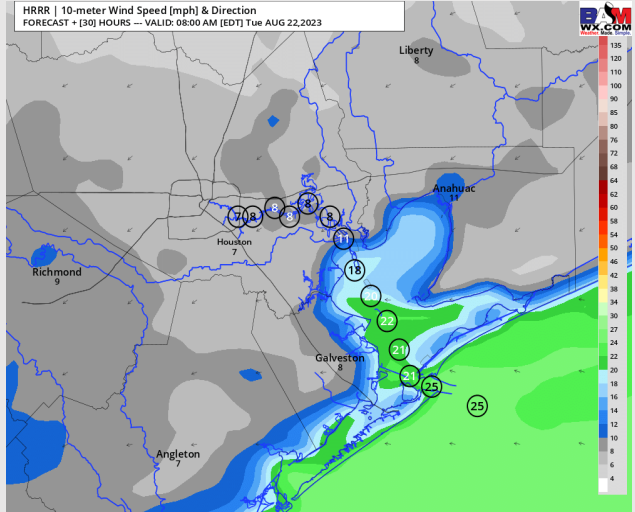
High Temps: S of Morgan’s Point: Low 90’s F. N of Morgan’s Point: Mid-to-upper 90’s F.

Visibility: Brief Periods of reduced visibility near the Boarding Station associated with heaviest downpours.

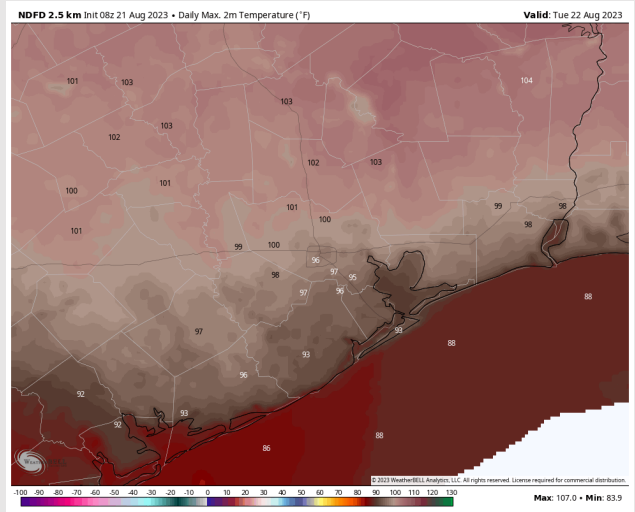
Precip Image: 12 PM CT



Wind Speed:
7 AM CT



High Temps
Tuesday



Houston Pilots: Wed. 8/23/2023



Forecast Discussion

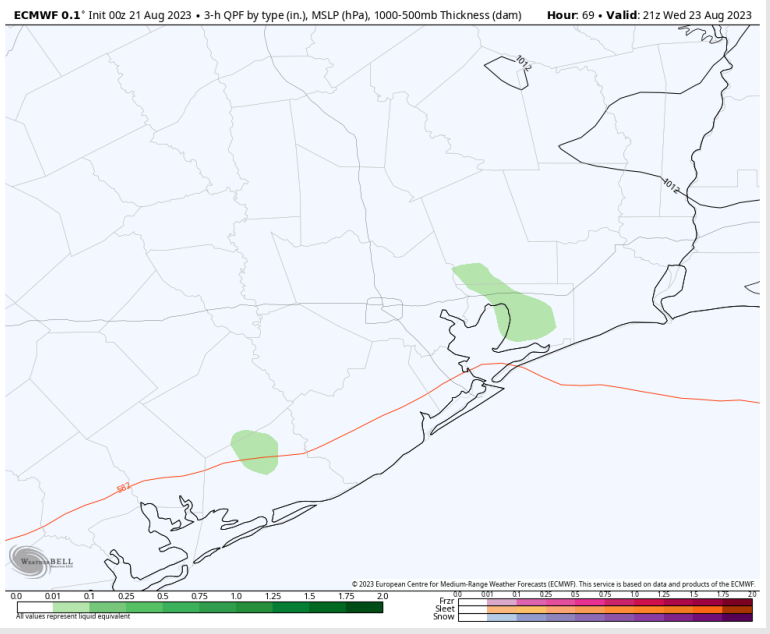
Precip: Dry weather is favored on Wednesday. However, will keep a mention of a 10% chance into the afternoon.

Wind: SE winds are expected to gradually weaken through the AM and will gradually shift towards the NE the back half of the AM hours. Through about 3 AM, winds at the boarding station will be sustained around 7 – 11 knots before continuing weakening. Lighter winds expected north of the boarding station. Winds are expected to shift back to the SE after 2 PM WED with sustained wind around 3 – 9 knots.

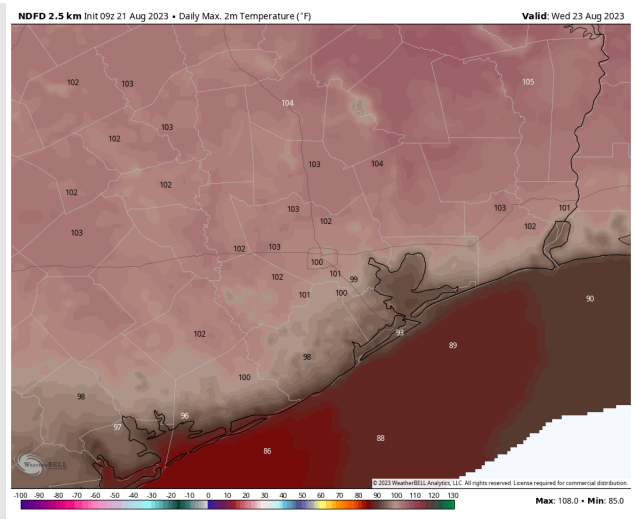
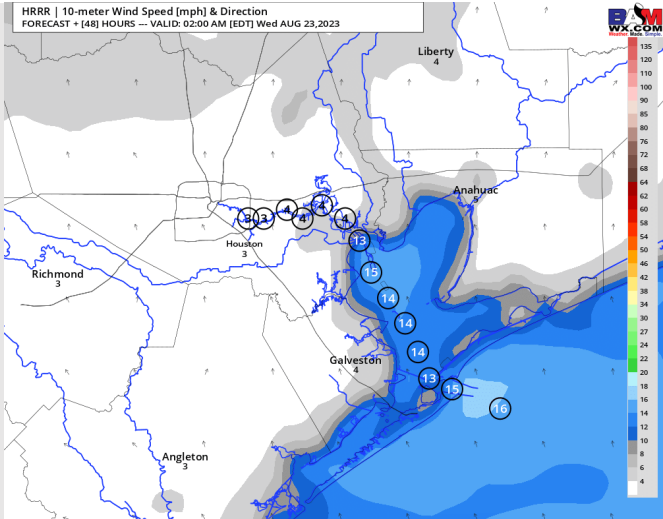
High Temps: S of Morgan's Point: Low 90s F. N of Morgan's Point: Upper 90s/Near 100 F.

Visibility: Not anticipating any visibility concerns.

Precip Image: 4 PM CT

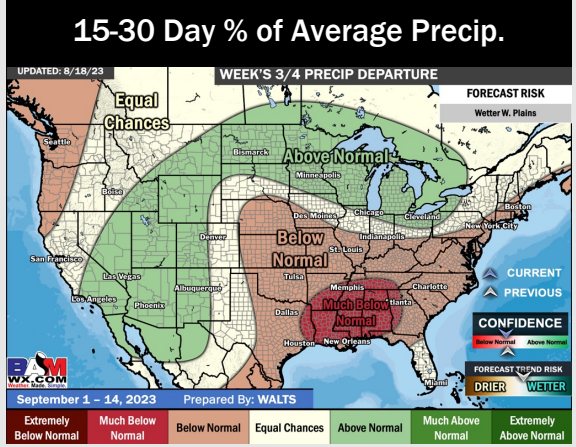
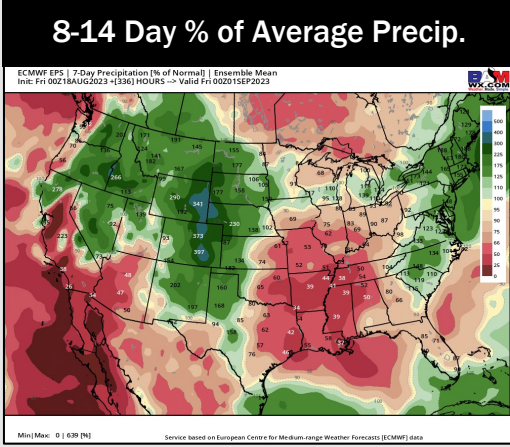
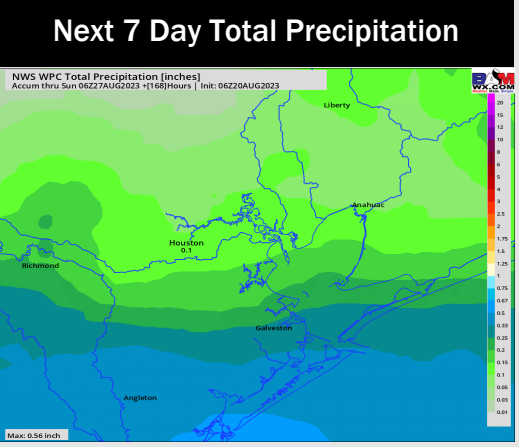
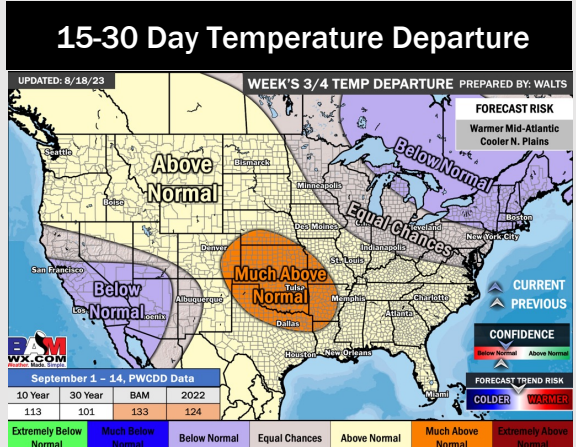
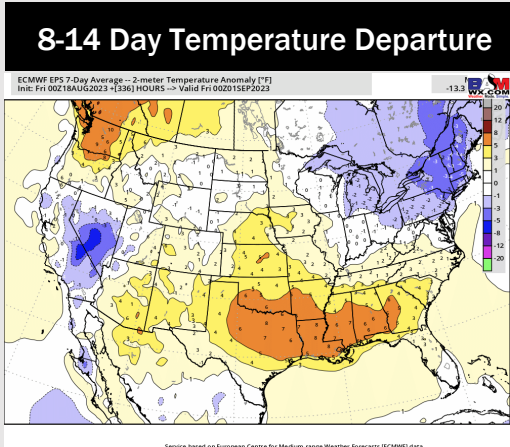
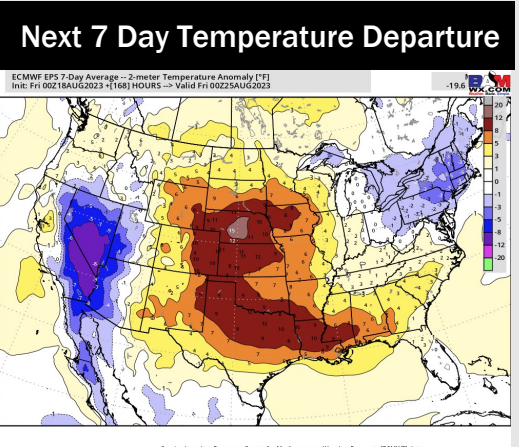


**Wind Speed:
1 AM CT**



**High Temps
Wednesday**

Houston Pilots: 8/21/23



- Tuesday will be the “best” precip chance over the next several days with only minor/ isolated chances deeper into the week.
- Expecting below normal precipitation chances and above normal temperatures for the week 2 timeframe.
- Above normal temperatures and below normal chances for precipitation are favored in the weeks ¾ timeframe.