

Houston Pilots Forecast Package



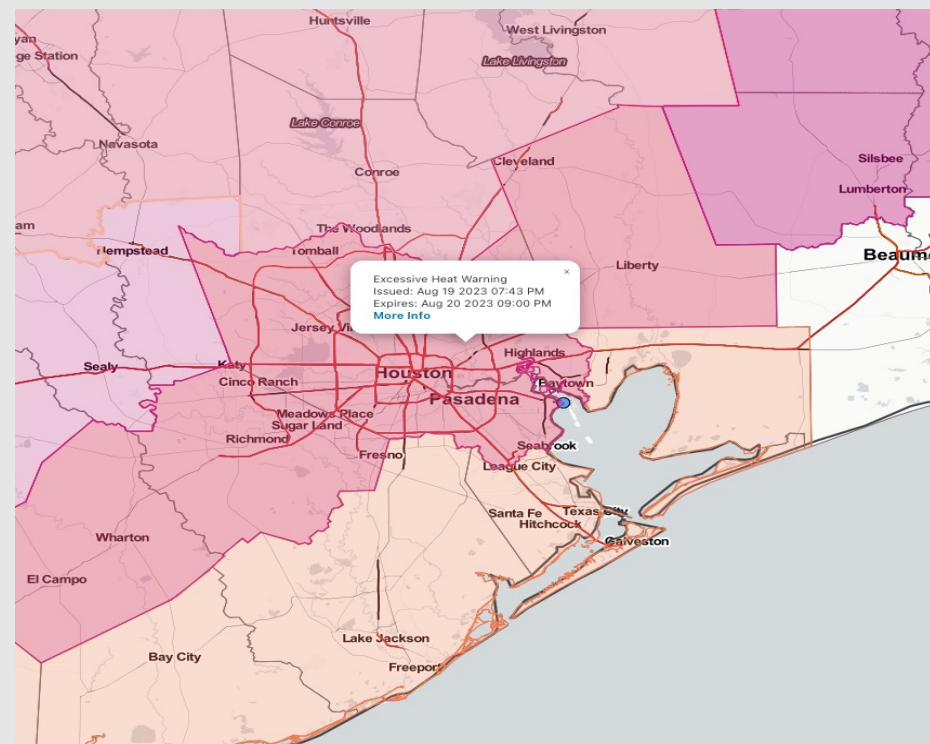
Updated: 5:30 PM CT

Sunday, August 20, 2023

Forecaster: Jonathan Kipper

Weather Headlines

- **Tuesday needs watched for increased rain/wind potential due to potential tropical disturbance. Timing/details will continue to be updated. (See Tropical Update Slides Below)**
- **Video Update**
- **Afternoon “feels like” temps will sit 103-108F across the area in the afternoon through this week.**
- **MON/TUE continue to be the main threats for precip with dry conditions favored mid/late this week.**



Radar/NWS Alerts: 5:30 PM CT



As always, please do not hesitate to reach out to us with any forecast questions via the chat option on the Weather Porthole or our on-call number, **(317)-560-8122** press 1 for forecast questions.

Houston Pilots Tropical Update

Port Condition	39 MPH Sustained Winds	6 Foot Waves	Time Remaining/Trigger End
Victor	N/A	N/A	N/A
Whiskey	N/A	N/A	N/A
X-Ray	No	Yes	1 PM CT TUE
Yankee	N/A	N/A	N/A
Zulu	N/A	N/A	N/A

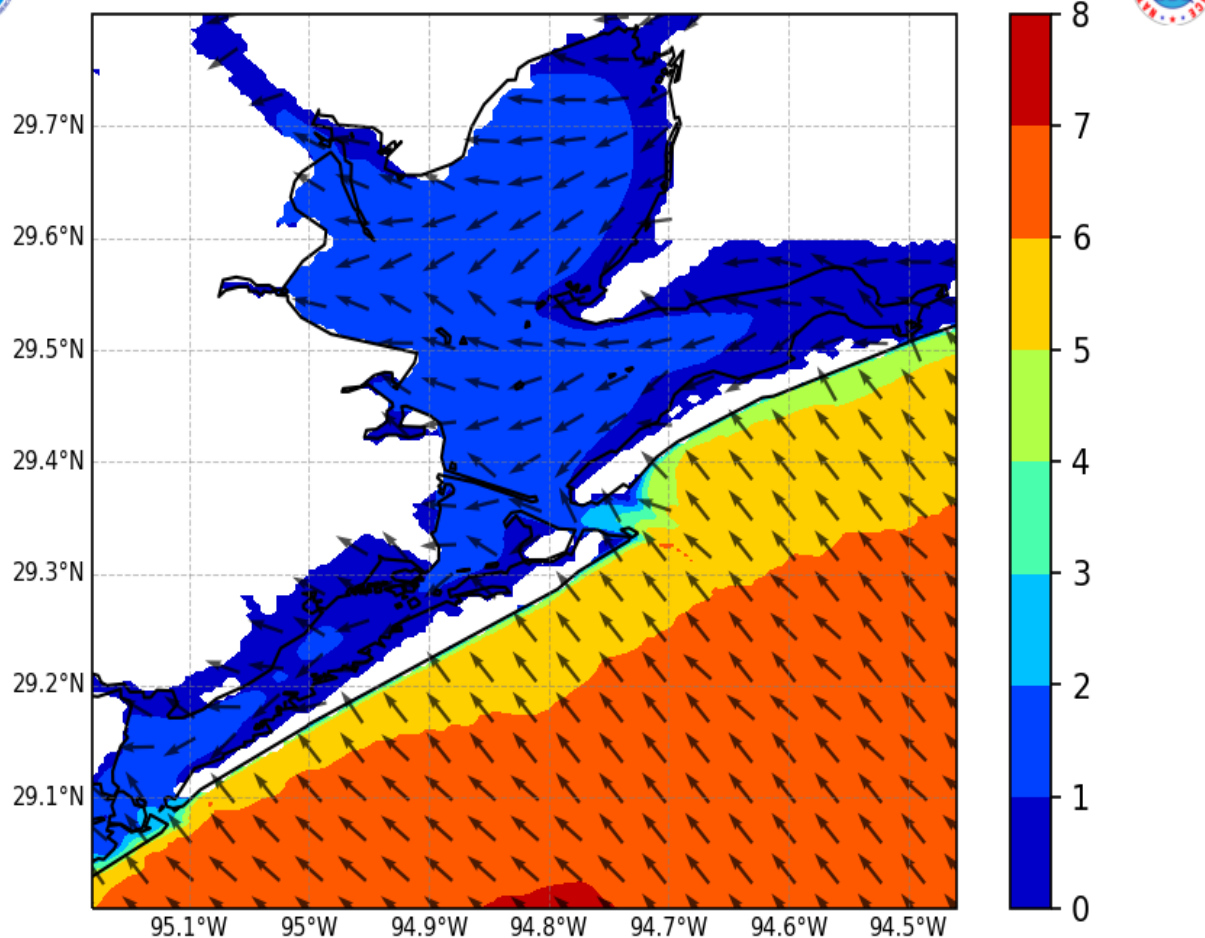
Port Condition	Trigger Definition	Trigger Reached?
Victor	Hurricane entering/developing in Gulf of Mexico that's a threat to the area	No
Whiskey	72 hours prior to predicted sustained winds of 39+ MPH	No
X-Ray	48 hours prior to predicted sustained winds of 39+ MPH or 6' wave height	Yes
Yankee	24 hours prior to predicted sustained winds of 39+ MPH or 6' wave height	No
Zulu	12 hours prior to predicted sustained winds of 39+ MPH or 6' wave height	No

- **Recent data has started to trend the 5-6' area for wave heights associated with TUE tropical storm further NW toward the HOU area.** While there is lower confidence the 6'+ wave height threshold is met, data trends have made this a possibility we will need to continue to monitor.
- The timing most at risk to see these increased wave heights would be 4 AM to 1 PM TUE. The stations affected would be the Boarding Station and Station 11/12. **ALL OTHER STATIONS WILL REMAIN WELL BELOW 6' THRESHOLD.**
- There will be the risk that as this system develops and starts to move West toward the TX Coast, wave height data will start to trend lower once again, and the X-Ray Trigger could be lifted tonight/tomorrow morning. (If holds, Yankee would be hit at 4 AM CT MON and Zulu at 4 PM CT MON). **The core of the tropical system still will track further toward TX/MX border.**

Houston Pilots Tropical Update

Significant Wave Heights at 11 AM CT TUE

NWPS Significant Wave Height (ft) and Peak Wave Direction
Hour 42 (12Z22AUG2023)



The image to the left shows the peak wave heights and peak wave direction associated with the incoming tropical system.

The peak wave heights are anticipated to be late Tuesday AM / early Tuesday Afternoon.

Houston Pilots Visibility Chart (miles)



Time	Sun 4pm	Sun 5pm	Sun 6pm	Sun 7pm	Sun 8pm	Sun 9pm	Sun 10pm	Sun 11pm	Mon 12am	Mon 1am	Mon 2am	Mon 3am	Mon 4am	Mon 5am	Mon 6am	Mon 7am	Mon 8am	Mon 9am	Mon 10am	Mon 11am	Mon 12pm	Mon 1pm	Mon 2pm	Mon 3pm	Mon 4pm	Mon 5pm	Mon 6pm	Mon 7pm	Mon 8pm	Mon 9pm	Mon 10pm	Mon 11pm	Tue 12am	Tue 1am	Tue 2am	Tue 3am
610 Bridge	10	10	10	10	10	10	10	10	10	10	10	10	10	10	10	9	9	10	10	10	10	10	10	10	10	10	10	10	10	10	10	10	10	10	10	10
Kinder 1	10	10	10	10	10	10	10	10	10	10	10	10	10	10	10	9	9	10	10	10	10	10	10	10	10	10	10	10	10	10	10	10	10	10	10	10
Greens Bayou	10	10	10	10	10	10	10	10	10	10	10	10	10	10	10	9	9	10	10	10	10	10	10	10	10	10	10	10	10	10	10	10	10	10	10	10
Shell Crude	10	10	10	10	10	10	10	10	10	10	10	10	10	10	10	9	9	10	10	10	10	10	10	10	10	10	10	10	10	10	10	10	10	10	10	10
Lynchburg Ferries	10	10	10	10	10	10	10	10	10	10	10	10	10	10	10	9	9	10	10	10	10	10	10	10	10	10	10	10	10	10	10	10	10	10	10	10
Exxon 3	10	10	10	10	10	10	10	10	10	10	10	10	10	10	10	10	9	10	10	10	10	10	10	10	10	10	10	10	10	10	10	10	10	10	10	10
Morgans Point	10	10	10	10	10	10	10	10	10	10	10	10	10	10	10	10	9	10	10	10	10	10	10	10	10	10	10	10	10	10	10	10	10	10	10	10
75/76	10	10	10	10	10	10	10	10	10	10	10	10	10	10	10	10	9	10	10	10	10	10	10	10	10	10	10	10	10	10	10	10	10	10	10	10
63/64	10	10	10	10	10	10	10	10	10	10	10	10	10	10	10	10	10	10	10	10	10	10	10	10	10	10	10	10	10	10	10	10	10	10	10	10
51/52	10	10	10	10	10	10	10	10	10	10	10	10	10	10	10	10	10	10	10	10	10	10	10	10	10	10	10	10	10	10	10	10	10	10	10	10
37/38	10	10	10	10	10	10	10	10	10	10	10	10	10	10	10	10	10	10	10	10	10	10	10	10	10	10	10	10	10	10	10	10	10	10	10	10
25/26	10	10	10	10	10	10	10	10	10	10	10	10	10	10	10	10	10	10	10	10	10	10	10	10	10	10	10	10	10	10	10	10	10	10	10	10
11/12	10	10	10	10	10	10	10	10	10	10	10	10	10	10	10	10	10	10	10	10	10	10	10	10	10	10	10	10	10	10	10	10	10	10	10	10
1 & 2 Bravo	10	10	10	10	10	10	10	10	10	10	10	10	10	10	10	10	10	10	10	10	10	10	10	10	10	10	10	10	10	10	10	10	10	10	10	10

NOTE: This is automated data that may/may not agree with the official BAM thinking that's found on the daily slides or special visibility report slides. This data should be used as a guide only

Houston Pilots Wind Chart



Forecast Confidence

Above Normal

Below Normal

Example

Sustained wind 13 Knots
Gusts 18 Knots
Wind from the N

WS: 13
G:18
N

Time Knots	Sun 4pm	Sun 5pm	Sun 6pm	Sun 7pm	Sun 8pm	Sun 9pm	Sun 10pm	Sun 11pm	Mon 12am	Mon 1am	Mon 2am	Mon 3am	Mon 4am	Mon 5am	Mon 6am	Mon 7am	Mon 8am	Mon 9am	Mon 10am	Mon 11am	Mon 12pm	Mon 1pm	Mon 2pm	Mon 3pm	Mon 4pm	Mon 5pm	Mon 6pm	Mon 7pm	Mon 8pm	Mon 9pm	Mon 10pm	Mon 11pm	Tue 12am	Tue 1am	Tue 2am	Tue 3am	
610 Bridge	6 E	7 ESE	7 SE	8 SSE	8 S	8 S	11 S	9 S	4 S	7 S	7 S	6 S	5 S	2 E	1 NE	1 NNE	3 NE	4 NE	6 ENE	8 ENE	11 E	13 E	15 E	16 E	16 ESE	17 ESE	12 ESE	12 ESE	12 ESE	12 ESE	17 ESE	17 E	15 E	14 E	16 E	9 E	8 E
	6 E	7 ESE	7 SSE	8 SSE	8 S	8 S	11 S	9 S	4 S	7 S	7 S	6 S	5 S	2 ENE	1 NE	1 NNE	3 NE	4 NE	6 ENE	8 ENE	11 E	13 E	15 E	16 E	16 ESE	17 ESE	12 ESE	12 ESE	12 ESE	11 ESE	11 E	10 E	9 E	10 E	9 E	8 E	
	9 E	10 ESE	10 SSE	12 SSE	12 S	12 S	10 S	9 S	7 S	7 S	6 S	5 S	5 S	2 ENE	1 NE	1 NNE	5 NE	6 NE	8 ENE	11 ENE	13 E	15 E	16 E	16 ESE	17 ESE	18 ESE	18 ESE	18 ESE	18 ESE	17 ESE	17 E	15 E	14 E	15 E	13 E	12 E	
Kinder 1	6 E	7 ESE	7 SSE	8 SSE	8 S	8 S	11 S	9 S	4 S	7 S	7 S	6 S	5 S	2 ENE	1 NE	1 NNE	3 NE	4 NE	6 ENE	8 ENE	11 E	13 E	15 E	16 E	16 ESE	17 ESE	18 ESE	18 ESE	18 ESE	18 ESE	17 ESE	17 E	15 E	14 E	15 E	13 E	12 E
	9 E	10 ESE	10 SSE	12 SSE	12 S	12 S	10 S	9 S	7 S	7 S	6 S	5 S	5 S	2 ENE	1 NE	1 NNE	5 NE	6 NE	8 ENE	11 ENE	13 E	15 E	16 E	16 ESE	17 ESE	18 ESE	18 ESE	18 ESE	18 ESE	17 ESE	17 E	15 E	14 E	15 E	13 E	12 E	
	6 E	7 ESE	7 SSE	8 SSE	8 S	8 S	11 S	9 S	4 S	7 S	7 S	6 S	5 S	2 ENE	1 NE	1 NNE	3 NE	4 NE	6 ENE	8 ENE	11 E	13 E	15 E	16 E	16 ESE	17 ESE	18 ESE	18 ESE	18 ESE	18 ESE	17 ESE	17 E	15 E	14 E	15 E	13 E	12 E
Greens Bayou	6 E	7 ESE	7 SSE	8 SSE	8 S	8 S	11 S	9 S	4 S	7 S	7 S	6 S	5 S	2 ENE	1 NE	1 NNE	3 NE	4 NE	6 ENE	8 ENE	11 E	13 E	15 E	16 E	16 ESE	17 ESE	18 ESE	18 ESE	18 ESE	18 ESE	17 ESE	17 E	15 E	14 E	15 E	13 E	12 E
	9 E	10 ESE	10 SSE	12 SSE	12 S	12 S	10 S	9 S	7 S	7 S	6 S	5 S	5 S	2 ENE	1 NE	1 NNE	5 NE	6 NE	8 ENE	11 ENE	13 E	15 E	16 E	16 ESE	17 ESE	18 ESE	18 ESE	18 ESE	18 ESE	17 ESE	17 E	15 E	14 E	15 E	13 E	12 E	
	6 E	7 ESE	7 SSE	8 SSE	8 S	8 S	11 S	9 S	4 S	7 S	7 S	6 S	5 S	2 ENE	1 NE	1 NNE	3 NE	4 NE	6 ENE	8 ENE	11 E	13 E	15 E	16 E	16 ESE	17 ESE	18 ESE	18 ESE	18 ESE	18 ESE	17 ESE	17 E	15 E	14 E	15 E	13 E	12 E
Shell Crude	6 E	7 ESE	7 SSE	8 SSE	8 S	8 S	11 S	9 S	4 S	7 S	7 S	6 S	5 S	2 ENE	1 NE	1 NNE	3 NE	4 NE	6 ENE	8 ENE	11 E	13 E	15 E	16 E	16 ESE	17 ESE	18 ESE	18 ESE	18 ESE	18 ESE	17 ESE	17 E	15 E	14 E	15 E	13 E	12 E
	9 E	10 ESE	10 SSE	12 SSE	12 S	12 S	10 S	9 S	7 S	7 S	6 S	5 S	5 S	2 ENE	1 NE	1 NNE	5 NE	6 NE	8 ENE	11 ENE	13 E	15 E	16 E	16 ESE	17 ESE	18 ESE	18 ESE	18 ESE	18 ESE	17 ESE	17 E	15 E	14 E	15 E	13 E	12 E	
	6 E	7 ESE	7 SSE	8 SSE	8 S	8 S	11 S	9 S	4 S	7 S	7 S	6 S	5 S	2 ENE	1 NE	1 NNE	3 NE	4 NE	6 ENE	8 ENE	11 E	13 E	15 E	16 E	16 ESE	17 ESE	18 ESE	18 ESE	18 ESE	18 ESE	17 ESE	17 E	15 E	14 E	15 E	13 E	12 E
Lynchburg Ferries	6 E	7 ESE	7 SSE	8 SSE	8 S	8 S	11 S	9 S	4 S	7 S	7 S	6 S	5 S	2 ENE	1 NE	1 NNE	3 NE	4 NE	6 ENE	8 ENE	11 E	13 E	15 E	16 E	16 ESE	17 ESE	18 ESE	18 ESE	18 ESE	18 ESE	17 ESE	17 E	15 E	14 E	15 E	13 E	12 E
	10 E	11 ESE	12 SSE	14 SSE	14 S	13 S	11 S	9 S	8 S	8 S	7 S	6 S	5 S	2 ENE	1 NE	1 NNE	5 NE	6 NE	8 ENE	11 ENE	13 E	14 E	15 ESE	16 ESE	16 ESE	18 ESE	18 ESE	18 ESE	18 ESE	17 ESE	16 E	16 E	14 E	13 E	14 E	12 E	11 E
	6 E	7 ESE	7 SSE	8 SSE	8 S	8 S	11 S	9 S	4 S	7 S	7 S	6 S	5 S	2 ENE	1 NE	1 NNE	3 NE	4 NE	6 ENE	8 ENE	11 E	13 E	15 E	16 E	16 ESE	17 ESE	18 ESE	18 ESE	18 ESE	18 ESE	17 ESE	17 E	15 E	14 E	15 E	13 E	12 E
Exxon 3	7 SE	8 SSE	10 SSE	11 S	10 S	9 S	8 S	7 S	6 S	6 S	5 S	5 S	3 S	2 ENE	2 NNE	3 NNE	4 NE	5 NE	7 ENE	8 ENE	9 E	10 E	11 ESE	13 ESE	14 ESE	16 ESE	16 ESE	18 ESE	18 ESE	17 ESE	16 E	16 E	14 E	14 E	14 E	13 E	12 E
	10 SE	11 SSE	13 SSE	15 S	14 S	13 S	11 S	9 S	8 S	7 S	6 S	5 S	4 S	3 ENE	3 NNE	3 NNE	6 NE	7 NE	9 ENE	11 ENE	13 E	14 E	16 ESE	16 ESE	16 ESE	18 ESE	18 ESE	17 ESE	16 ESE	16 E	14 E	14 E	14 E	13 E	12 E		
	8 SE	10 SSE	12 SSE	14 S	12 S	11 S	9 S	8 S	7 S	6 S	5 S	5 S	4 S	3 ENE	3 NNE	3 NNE	6 NE	7 NE	9 ENE	11 ENE	13 E	14 E	16 ESE	16 ESE	16 ESE	18 ESE	18 ESE	17 ESE	16 ESE	16 E	14 E	14 E	14 E	13 E	12 E		
Morgans Point	8 SSE	10 SSE	12 SSE	14 S	16 S	15 S	13 S	11 S	10 S	9 S	8 S	7 S	5 S	4 S	3 E	4 NNE	6 NE	8 NE	9 ENE	11 E	12 E	14 ESE	16 ESE	17 ESE	18 ESE	19 ESE	19 ESE	18 ESE	17 ESE	17 E	15 E	16 E	16 E	15 E	14 E	12 E	
	12 SSE	13 SSE	14 S	16 S	15 S	13 S	11 S	10 S	9 S	8 S	7 S	5 S	4 S	3 S	4 E	6 NNE	8 NE	9 ENE	11 E	12 E	14 ESE	16 ESE	17 ESE	18 ESE	19 ESE	19 ESE	18 ESE	17 ESE	17 E	15 E	16 E	16 E	15 E	14 E	12 E		
	10 SSE	13 SSE	14 S	16 S	15 S	13 S	11 S	10 S	9 S	8 S	7 S	5 S	4 S	3 WSW	4 WSW	5 NNE	8 NE	9 NE	10 ENE	12 ENE	14 ESE	16 ESE	17 ESE	18 ESE	20 ESE	20 ESE	20 ESE	17 ESE	17 ESE	16 E	16 E	16 E	16 E	15 E	14 E	12 E	
75/76	10 SSE	13 SSE	14 S	16 S	15 S	14 S	12 S	10 S	9 S	8 S	7 S	5 S	4 S	3 WSW	4 WSW	5 NNE	8 NE	9 NE	10 ENE	12 ENE	14 ESE	16 ESE	17 ESE	18 ESE	20 ESE	20 ESE	20 ESE	17 ESE	17 ESE	16 E	16 E	16 E	16 E	15 E	14 E	12 E	
	13 SSE	14 SSE	16 S	16 S	15 S	14 S	12 S	10 S	9 S	8 S	7 S	5 S	4 S	3 WSW	4 SSW	6 NNE	8 NE	9 NE	10 ENE	12 ENE	14 ESE	16 ESE	17 ESE	18 ESE	20 ESE	20 ESE	20 ESE	17 ESE	17 ESE	16 E	16 E	16 E	16 E	15 E	14 E	12 E	
	10 SSE	13 SSE	14 S	16 S	15 S	13 S	11 S	10 S	9 S	8 S	7 S	5 S	4 S	3 WSW	4 SSW	6 NNE	8 NE	9 NE	10 ENE	12 ENE	14 ESE	16 ESE	17 ESE	18 ESE	20 ESE	20 ESE	20 ESE	17 ESE	17 ESE	16 E	16 E	16 E	16 E	15 E	14 E	12 E	
63/64	10 SSE	13 SSE	14 S	16 S	15 S	13 S	11 S	10 S	9 S	8 S	7 S	5 S	4 S	3 SW	4 SSW	6 NNE	8 NE	9 NE	10 ENE	12 ENE	14 ESE	16 ESE	17 ESE	18 ESE	20 ESE	20 ESE	20 ESE	17 ESE	17 ESE	16 E	16 E	16 E	16 E	15 E	14 E	12 E	
	13 SSE	14 SSE	16 S	16 S	15 S	13 S	11 S	10 S	9 S	8 S	7 S	5 S	4 S	3 SW	4 SSW	6 NNE	8 NE	9 NE	10 ENE	12 ENE	14 ESE	16 ESE	17 ESE	18 ESE	20 ESE	20 ESE	20 ESE	17 ESE	17 ESE	16 E	16 E	16 E	16 E	15 E	14 E	12 E	
	10 SSE	13 SSE	14 S	16 S	15 S	13 S	11 S	10 S	9 S	8 S	7 S	5 S	4 S	3 SW	4 SSW	6 NNE	8 NE	9 NE	10 ENE	12 ENE	14 ESE	16 ESE	17 ESE	18 ESE	20 ESE	20 ESE	20 ESE	17 ESE	17 ESE	16 E	16 E	16 E	16 E	15 E	14 E	12 E	
51/52	10 S	13 S	14 S	14 S	13 S	11 S	10 S	9 S	8 S	7 S	6 S	4 S	3 S	3 SW	4 E	5 NNE	7 NNE	8 NE	9 NE	10 ENE	12 ENE	14 ESE	15 ESE	16 ESE	16 ESE	18 ESE	18 ESE	17 ESE	17 ESE	16 E	16 E	18 E	18 E	17 E	17 E	18 E	18 E
	13 S	14 S	15 S	16 S	14 S	12 S	11 S	10 S	9 S	8 S	7 S	5 S	4 S	3 SW	4 E	5 NNE	7 NNE	8 NE	9 NE	10 ENE	12 ENE	14 ESE	15 ESE	16 ESE	16 ESE	18 ESE	18 ESE	17 ESE	17 ESE	16 E	16 E	18 E	18 E	17 E	17 E	18 E	18 E
	10 S	12 S	13 S	14 S	13 S	11 S	10 S	9 S	8 S	7 S	6 S	4 S	3 S	2 SW	3 E	5 NNE	7 NNE	8 NE	9 NE	10 ENE	12 ENE	14 ESE	15 ESE	16 ESE	16 ESE	18 ESE	18 ESE	17 ESE	17 ESE	16 E	16 E	18 E	18 E	17 E	17 E	18 E	18 E
37/38	10 S	12 S	13 S	14 S	13 S	11 S	10 S	9 S	8 S	7 S	6 S	4 S	3 S	2 NE	3 NNE	5 NNE	7 NE	8 NE	9 ENE	11 ENE	13 E	14 E	15 ESE	15 ESE	15 ESE	17 ESE	17 ESE	17 ESE	17 ESE	17 E	17 E	18 E	18 E	18 E	18 E	18 E	18 E
	12 S	13 S	14 S	14 S	13 S	11 S	10 S	9 S	8 S	7 S	6 S	4 S	3 S	2 NE	3 NNE	5 NNE	7 NE	8 NE	9 ENE	11 ENE	13 E	14 E	15 ESE	15 ESE	15 ESE	17 ESE	17 ESE	17 ESE	17 ESE	17 E	17 E	18 E	18 E	18 E	18 E	18 E	18 E
	10 S	11 S	11 S	11 S	10 S	8 S	7 S	7 S	7 S	6 S	4 S	2 S	2 S	3 E	3 NNE	4 NNE	7 NE	8 NE	9 ENE	11 ENE	13 E	14 E	15 ESE	15 ESE	15 ESE	17 ESE	17 ESE	17 ESE	17 ESE	17 E	17 E	18 E	18 E	18 E	18 E	18 E	18 E
25/26	11 S	12 S	13 S	13 S	12 S	10 S	9 S	9 S	9 S	8 S																											

NOTE: This is automated data that may/may not agree with the official BAM thinking that's found on the daily slides.
This data should be used as a guide only

Houston Pilots: Sun. 8/20/2023

Forecast Discussion

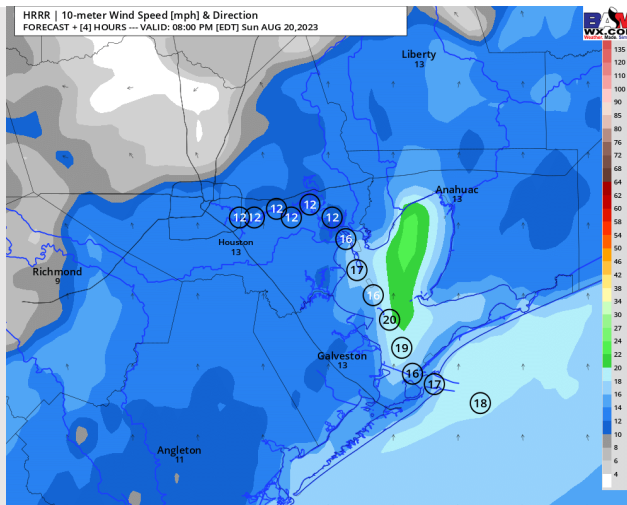
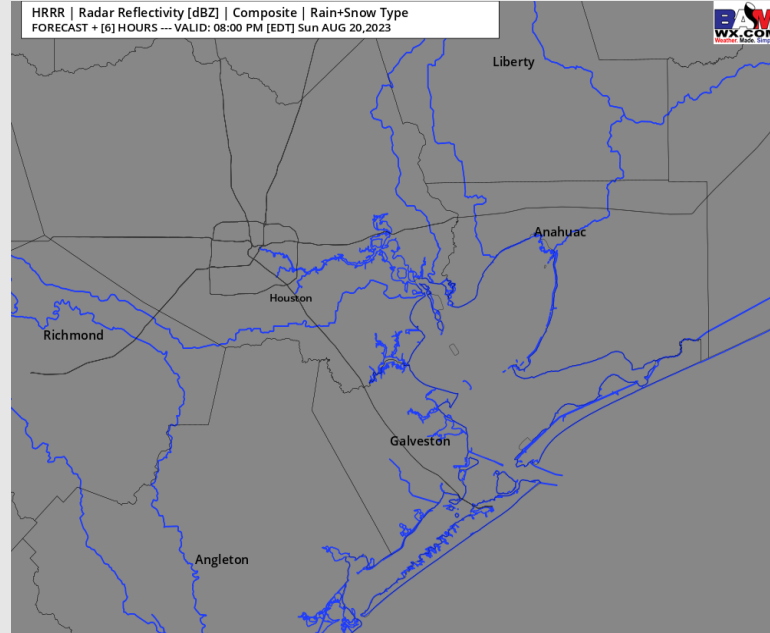
Precip: Dry weather is favored throughout the rest of the day.

Wind: Winds will continue out of the S/SW the rest of the day. **N of Morgan's Point:** 3-8 kts until 4 PM, increasing to 7-12 kts for the remainder of the evening. **S of Morgan's Point:** 5-10 kts through 3 PM. After 3 PM, winds increase to 13-18 kts remainder of the day.

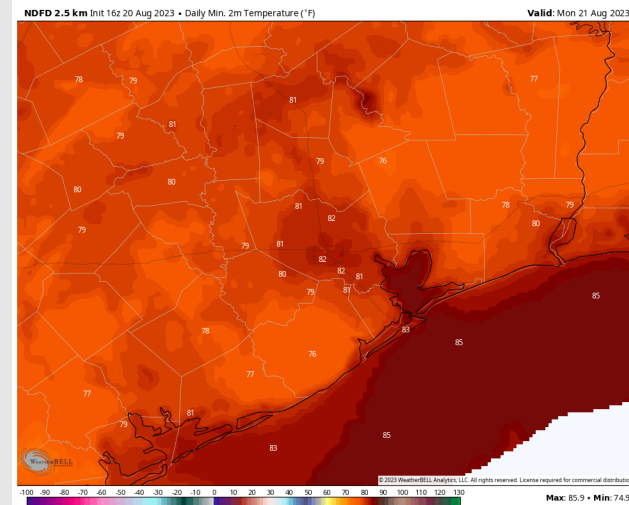
Low Temps: **S of Morgan's Point:** Mid 80s F. **N of Morgan's Point:** Low 80s F.

Visibility: Not anticipating any visibility concerns.

Precip Image: 7 PM CT



Wind Speed:
7 PM CT



Low Temps
Monday

Houston Pilots: Mon. 8/21/2023

Forecast Discussion

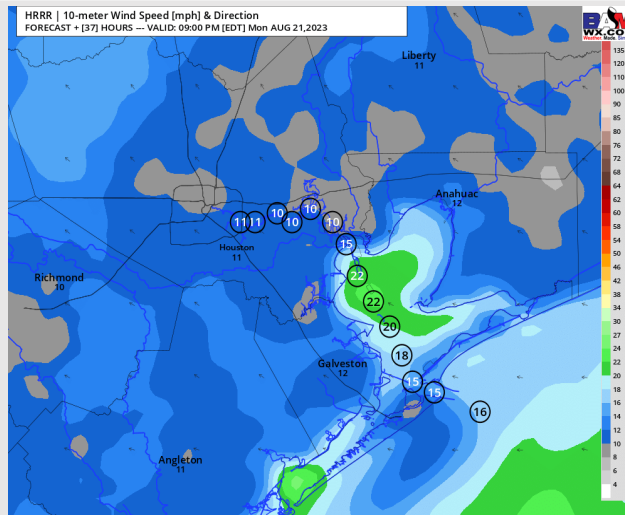
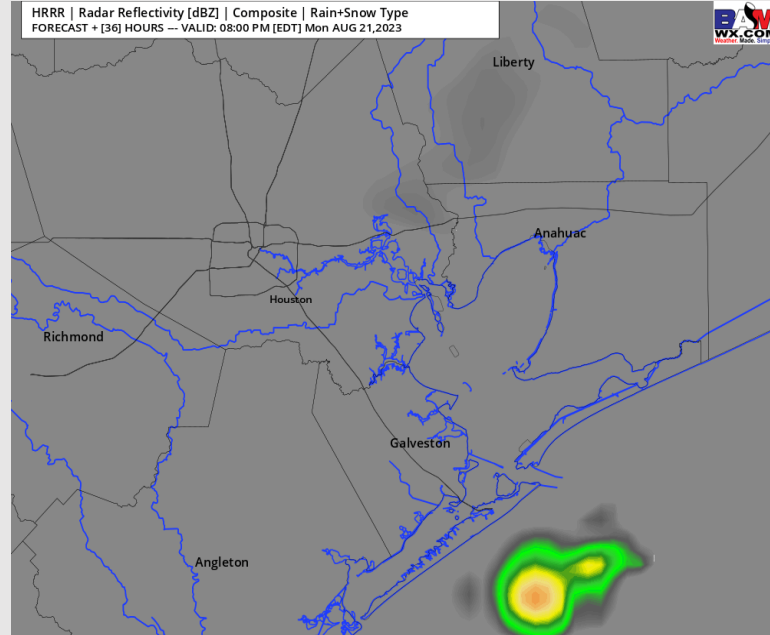
Precip: 30-40% chance for showers for all stations from 2PM through the evening hours.

Wind: Winds will start out of the SW before veering to being out of the E/SE for all stations by 1 PM. **N of Morgan's Point:** 2-7 kts through 1 PM, increasing to 8-13 kts for the remainder of the day. **S of Morgan's Point:** 8-13 kts through 4 AM before decreasing to 2-7 kts through 12 PM. Winds then steadily increasing to 15-22 kts by 4 PM and remaining at that clip for the rest of the evening (**gusts 22-27 kts S of Morgan's Point after 7 PM possible**). For additional details on tropical system, see tropical slide.

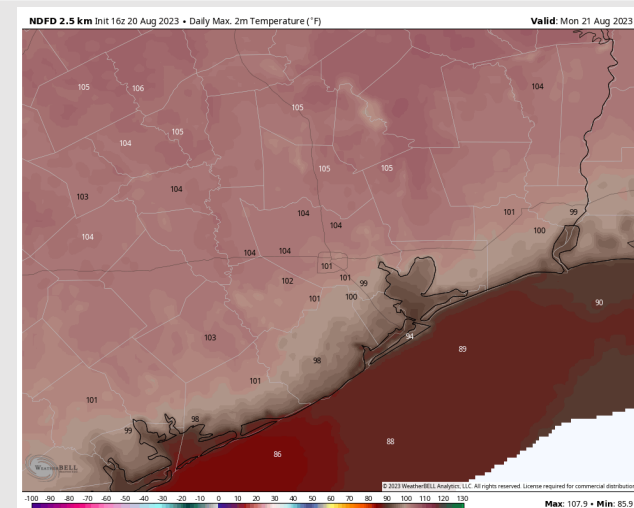
High Temps: **S of Morgan's Point:** Low/mid 90s. **N of Morgan's Point:** Upper 90s/low 100s F.

Visibility: No visibility issues.

Precip Image: 7 PM CT



Wind Speed:
8 PM CT



High Temps
Monday

Forecast Discussion

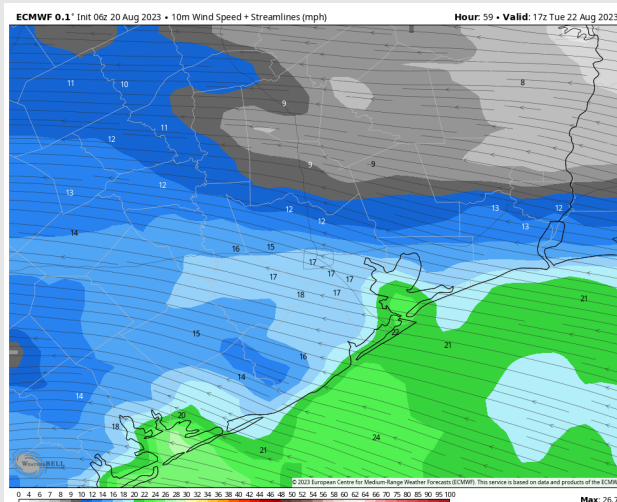
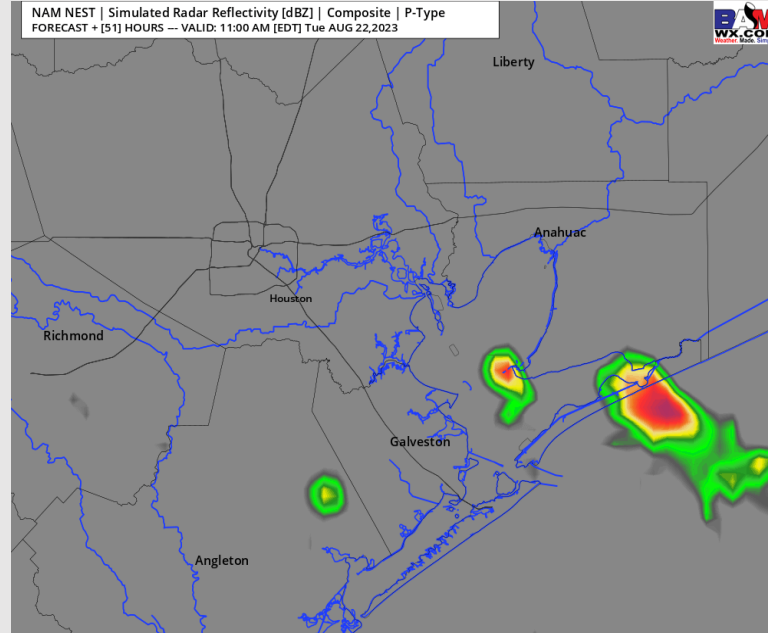
Precip: Several scattered bands of heavy rain/storms will be possible, beginning as early as 4AM-CT, with the greatest potential for storms for late morning/early afternoon. While system has continued to trend south, rain/storm risks will be favored especially for stations **S of Morgan's Point**.

Wind: Winds will be out of the E/SE throughout the entire day on TUE. **N of Morgan's Point:** 7-12 kts through 12 PM, then increasing to 12-17kts through 8 PM. After 8 PM, winds decrease to 6-11 kts rest of the day. **S of Morgan's Point:** 17-22kts through 12 PM before decreasing to 15-20kts through 8 PM. After 8 PM, winds decrease again to 8-13 kts (**gusts 25-30 kts at all stations until 6 PM**). For additional details on tropical system, see tropical slide.

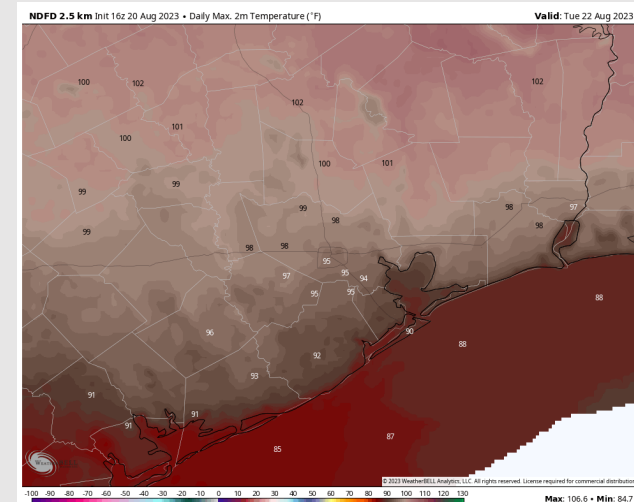
High Temps: **S of Morgan's Point:** Upper 80s / Low 90s F. **N of Morgan's Point:** Mid 90s F.

Visibility: Brief Periods of reduced visibility near the Boarding Station associated with heaviest downpours.

Precip Image: 12 PM CT



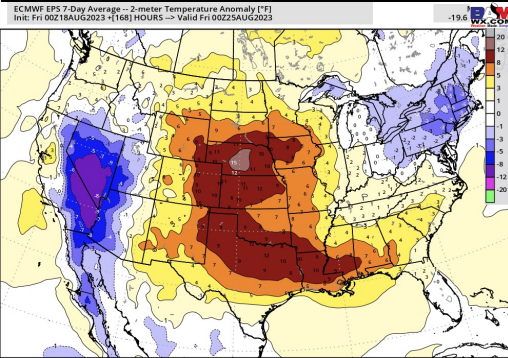
Wind Speed:
12 PM CT



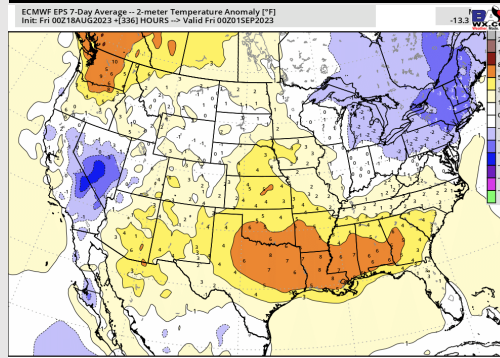
High Temps
Tuesday

Houston Pilots: 8/20/23

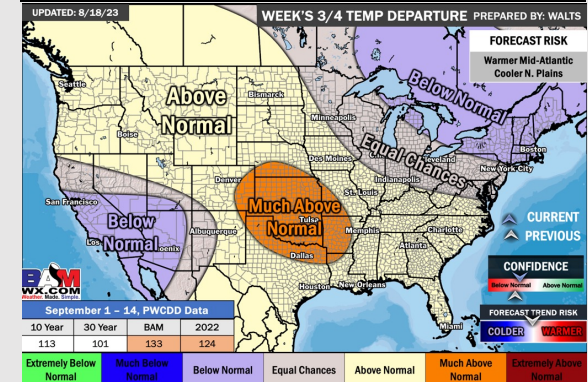
Next 7 Day Temperature Departure



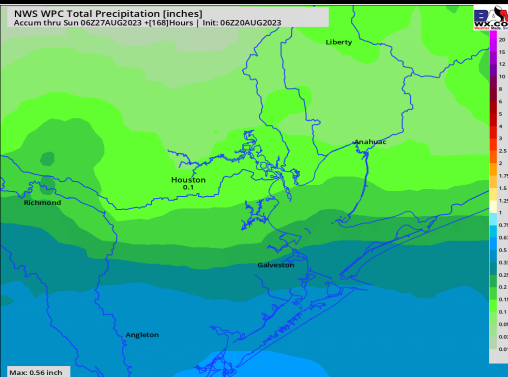
8-14 Day Temperature Departure



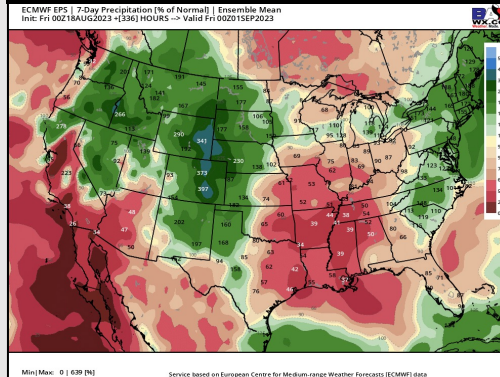
15-30 Day Temperature Departure



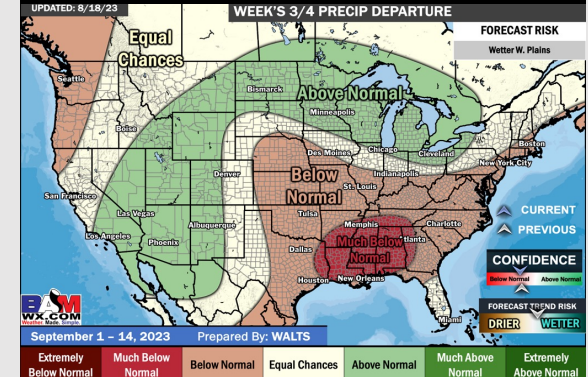
Next 7 Day Total Precipitation



8-14 Day % of Average Precip.



15-30 Day % of Average Precip.



- Tuesday will be the “best” precip chance over the next several days with most of the next several days staying dry. Heavy rain looks to be possible with Tuesday’s wave of activity, with better chances S of Morgan’s Point.
- Expecting below normal precipitation chances and above normal temperatures for the week 2 timeframe.
- Above normal temperatures and below normal chances for precipitation are favored in the weeks $\frac{3}{4}$ timeframe.