

Houston Pilots Forecast Package



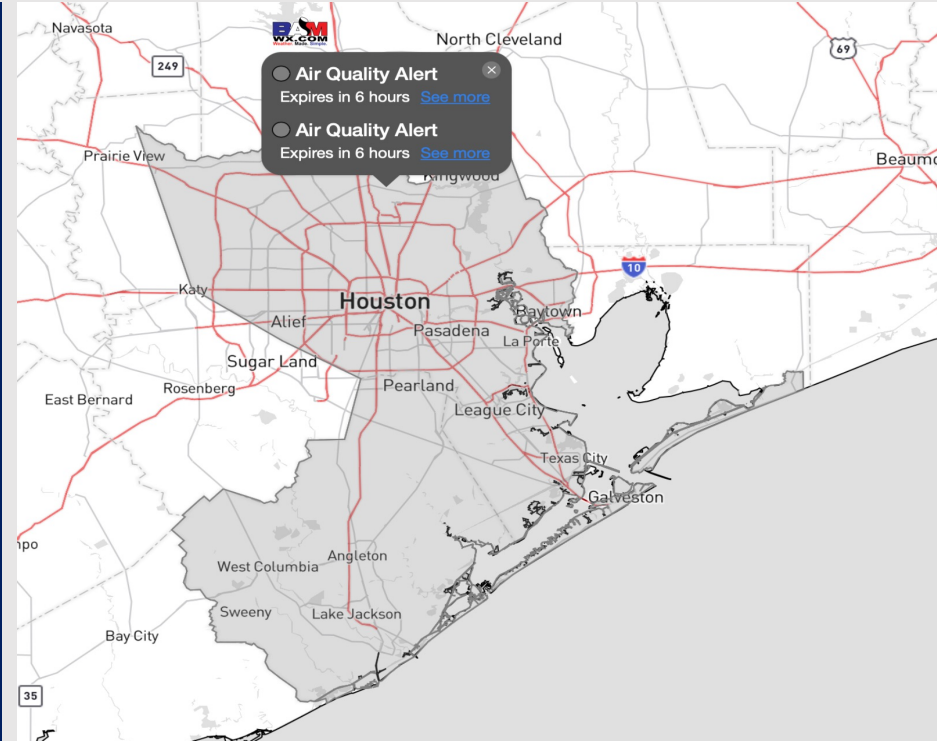
Updated: 1:20 PM CT

Thursday, August 31, 2023

Forecaster: Tyler Riggles

Weather Headlines

- Not anticipating tropical development in the Gulf of Mexico over the next 7-10 days but monitoring for potential development in the Atlantic beyond September 8th.
- Favoring dry conditions over the next 36-48 hours with low-end rain chances entering SAT AM.
- Not anticipating any visibility concerns over the next few days.



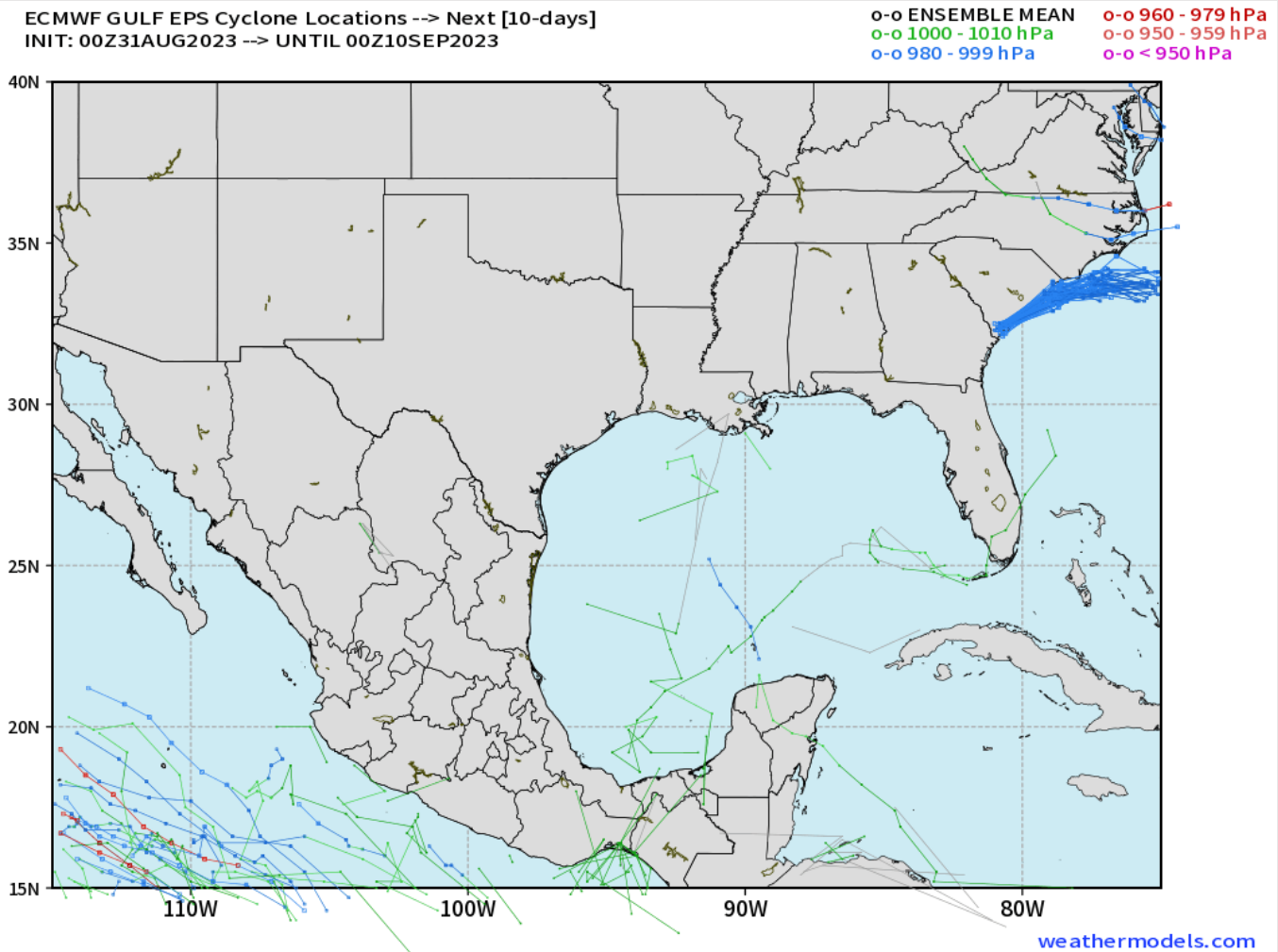
Radar/NWS Alerts: 1:20 PM CT



As always, please do not hesitate to reach out to us with any forecast questions via the chat option on the Weather Porthole or our on-call number, **(317)-560-8122** press 1 for forecast questions.

Houston Pilots Tropical Update

European Model Next 10 Days Tropical Tracks



Not anticipating tropical development in the Gulf of Mexico over the next 7-10 days.

Currently monitoring for potential development in the Atlantic beyond September 8th.

Houston Pilots Visibility Chart (miles)



Forecast Confidence



Time	Thu 12pm	Thu 1pm	Thu 2pm	Thu 3pm	Thu 4pm	Thu 5pm	Thu 6pm	Thu 7pm	Thu 8pm	Thu 9pm	Thu 10pm	Thu 11pm	Fri 12am	Fri 1am	Fri 2am	Fri 3am	Fri 4am	Fri 5am	Fri 6am	Fri 7am	Fri 8am	Fri 9am	Fri 10am	Fri 11am	Fri 12pm	Fri 1pm	Fri 2pm	Fri 3pm	Fri 4pm	Fri 5pm	Fri 6pm	Fri 7pm	Fri 8pm	Fri 9pm	Fri 10pm	Fri 11pm	
610 Bridge	10	10	10	10	10	10	10	10	10	10	10	10	10	10	10	10	10	10	10	10	10	10	10	10	10	10	10	10	10	10	10	10	10	10	10	10	
Kinder 1	10	10	10	10	10	10	10	10	10	10	10	10	10	10	10	10	10	10	10	10	10	10	10	10	10	10	10	10	10	10	10	10	10	10	10	10	10
Greens Bayou	10	10	10	10	10	10	10	10	10	10	10	10	10	10	10	10	10	10	10	10	10	10	10	10	10	10	10	10	10	10	10	10	10	10	10	10	10
Shell Crude	10	10	10	10	10	10	10	10	10	10	10	10	10	10	10	10	10	10	10	10	10	10	10	10	10	10	10	10	10	10	10	10	10	10	10	10	10
Lynchburg Ferries	10	10	10	10	10	10	10	10	10	10	10	10	10	10	10	10	10	10	10	10	10	10	10	10	10	10	10	10	10	10	10	10	10	10	10	10	10
Exxon 3	10	10	10	10	10	10	10	10	10	10	10	10	10	10	10	10	10	10	10	10	10	10	10	10	10	10	10	10	10	10	10	10	10	10	10	10	10
Morgans Point	10	10	10	10	10	10	10	10	10	10	10	10	10	10	10	10	10	10	10	10	10	10	10	10	10	10	10	10	10	10	10	10	10	10	10	10	10
75/76	10	10	10	10	10	10	10	10	10	10	10	10	10	10	10	10	10	10	10	10	10	10	10	10	10	10	10	10	10	10	10	10	10	10	10	10	10
63/64	10	10	10	10	10	10	10	10	10	10	10	10	10	10	10	10	10	10	10	10	10	10	10	10	10	10	10	10	10	10	10	10	10	10	10	10	10
51/52	10	10	10	10	10	10	10	10	10	10	10	10	10	10	10	10	10	10	10	10	10	10	10	10	10	10	10	10	10	10	10	10	10	10	10	10	10
37/38	10	10	10	10	10	10	10	10	10	10	10	10	10	10	10	10	10	10	10	10	10	10	10	10	10	10	10	10	10	10	10	10	10	10	10	10	10
25/26	10	10	10	10	10	10	10	10	10	10	10	10	10	10	10	10	10	10	10	10	10	10	10	10	10	10	10	10	10	10	10	10	10	10	10	10	10
11/12	10	10	10	10	10	10	10	10	10	10	10	10	10	10	10	10	10	10	10	10	10	10	10	10	10	10	10	10	10	10	10	10	10	10	10	10	10
1 & 2 Bravo	10	10	10	10	10	10	10	10	10	10	10	10	10	10	10	10	10	10	10	10	10	10	10	10	10	10	10	10	10	10	10	10	10	10	10	10	10

NOTE: This is automated data that may/may not agree with the official BAM thinking that's found on the daily slides or special visibility report slides. This data should be used as a guide only

Houston Pilots Wind Chart



Example

Sustained wind 13 Knots

Gusts 18 Knots

Wind from the N

WS: 13
G:18
N

Time	Thu 12pm	Thu 1pm	Thu 2pm	Thu 3pm	Thu 4pm	Thu 5pm	Thu 6pm	Thu 7pm	Thu 8pm	Thu 9pm	Thu 10pm	Thu 11pm	Fri 12am	Fri 1am	Fri 2am	Fri 3am	Fri 4am	Fri 5am	Fri 6am	Fri 7am	Fri 8am	Fri 9am	Fri 10am	Fri 11am	Fri 12pm	Fri 1pm	Fri 2pm	Fri 3pm	Fri 4pm	Fri 5pm	Fri 6pm	Fri 7pm	Fri 8pm	Fri 9pm	Fri 10pm	Fri 11pm		
610 Bridge	5	6	6	6	6	7	7	6	5	4	3	2	1	1	1	2	2	2	2	3	4	5	5	5	5	5	6	6	6	6	7	8	8	7	6	5	4	
	8	9	9	9	9	10	10	9	8	6	5	3	2	2	2	2	3	4	6	6	6	7	7	8	8	9	10	10	11	11	11	10	9	8	7	6	5	4
	NE	NE	NE	NE	ENE	ENE	E	ESE	ESE	SE	SSE	SSE	S	E	WSW	NNE	NNE	NE	NE	NNE	NNE	NE	NE	NE	NE	NE	NE	ENE	E	ESE	ESE	SE	SE	SE	SE	SE	SE	SE
Kinder 1	5	6	6	6	6	7	7	7	6	5	4	3	2	1	1	1	2	2	2	3	4	5	5	5	5	5	6	6	6	6	7	8	8	7	6	5	4	
	8	9	9	9	9	10	10	9	8	6	5	3	2	2	2	2	3	4	6	6	6	7	7	8	8	9	10	10	11	11	10	9	7	6	5	4	3	2
	NE	NE	NE	NE	ENE	ENE	E	ESE	ESE	SE	SSE	SSE	SSW	E	NW	NNE	NNE	NE	NE	NNE	NNE	NE	NE	NE	NE	NE	ENE	E	ESE	ESE	SE	SE	SE	SE	SE	SE	SE	SE
Greens Bayou	5	5	6	6	6	7	7	7	6	5	4	3	2	1	1	1	2	2	2	3	4	5	5	5	5	6	6	6	6	7	7	8	8	7	6	5	4	
	8	8	9	9	9	10	10	9	8	6	5	3	2	2	2	2	3	4	5	6	6	7	7	8	8	9	10	10	11	11	10	9	7	6	5	4	3	2
	NE	NE	NE	NE	ENE	ENE	E	ESE	ESE	SE	SSE	SSE	SSW	ENE	WSW	NNE	NE	NE	NNE	NNE	NNE	NE	NE	NE	NE	NE	ENE	ENE	E	ESE	ESE	SE	SE	SE	SE	SE	SE	SE
Shell Crude	5	5	6	6	6	7	7	8	6	5	4	3	2	2	2	2	2	2	2	3	4	5	5	5	5	6	6	6	6	7	7	8	8	7	6	5	4	
	8	8	9	9	10	10	10	9	8	6	5	3	2	2	2	2	3	4	5	6	6	7	7	8	8	9	10	11	12	12	11	10	9	7	6	5	4	3
	NE	NE	ENE	ENE	ENE	E	ESE	SE	SE	SSE	SE	SW	ESE	S	NNE	NE	NE	NNE	NNE	NNE	NE	NNE	NE	NE	NE	NE	ENE	E	ESE	ESE	SE	SE	SE	SE	SE	SE	SE	SE
Lynchburg Ferries	5	5	6	6	7	7	8	8	7	5	4	3	2	2	2	3	3	3	3	4	5	6	7	7	8	8	9	10	11	12	12	11	10	9	7	6	5	4
	8	8	9	9	10	10	10	9	8	6	5	4	3	3	3	3	3	3	4	5	6	7	7	8	8	9	10	11	12	12	11	10	9	7	6	5	4	3
	NE	NE	NE	ENE	ENE	E	ESE	SE	SE	SSE	SE	SE	ESE	NE	NE	NE	NE	NE	NNE	NNE	NNE	NE	NE	NE	NE	NE	ENE	E	ESE	ESE	SE	SE	SE	SE	SE	SE	SE	SE
Exxon 3	5	6	6	7	7	8	8	9	7	6	5	4	3	3	3	3	3	3	3	4	4	5	5	5	6	6	6	6	7	7	8	8	7	6	5	4	3	2
	8	8	9	10	10	10	11	11	10	8	6	5	4	4	4	4	5	5	6	6	7	7	7	8	8	9	11	12	12	12	11	9	8	7	6	5	4	3
	ENE	ENE	ENE	ENE	E	ESE	SE	SE	SE	SE	SE	SE	E	NE	NE	NE	NNE	NNE	NNE	NNE	NE	NE	NE	NE	NE	ENE	E	ESE	ESE	SE	SE	SE	SE	SE	SE	SE	SE	SE
Morgans Point	6	6	7	7	8	9	11	10	9	7	6	5	4	4	4	4	4	4	5	5	6	6	6	6	6	6	7	9	10	11	11	11	9	8	7	6	5	4
	8	9	10	10	11	11	12	12	11	9	7	6	5	5	5	5	5	6	6	6	7	7	8	7	8	9	10	12	13	14	14	13	11	10	8	7	6	5
	ENE	E	E	E	ESE	SE	SSE	SSE	SSE	SSE	SE	ESE	ENE	NE	NE	NE	NE	NE	NNE	NNE	NE	NE	NE	ENE	ENE	E	E	ESE	SE	SE	SE	SE	SE	SE	SE	SE	SE	SE
75/76	6	6	7	8	9	11	13	12	11	9	7	6	5	5	5	5	6	6	6	7	8	8	8	7	6	6	7	10	11	13	13	13	11	9	8	7	6	5
	9	9	10	11	12	13	14	14	12	10	8	7	6	5	6	6	7	7	8	9	9	9	8	8	9	10	11	12	14	15	15	14	13	11	9	8	7	6
	ENE	E	E	ESE	ESE	SE	SSE	SSE	SSE	SSE	SE	ESE	ESE	ENE	NE	NE	NE	NE	NE	NE	NE	NE	NE	NE	ENE	E	E	ESE	SE	SE	SE	SE	SE	SE	SE	SE	SE	SE
63/64	6	5	6	7	9	11	12	12	10	8	7	6	5	5	5	5	6	7	7	8	9	9	9	8	7	6	6	7	9	11	12	13	13	11	9	8	7	6
	8	9	9	10	11	12	14	14	11	9	8	7	6	5	5	6	7	7	8	9	10	10	9	9	8	9	10	12	13	14	14	14	12	10	9	8	7	6
	NE	ENE	E	ESE	SE	SE	SSE	SSE	SSE	SE	ESE	ESE	E	ENE	ENE	ENE	NE	NE	NE	NE	NE	NE	NE	NE	ENE	E	SE	SE	SE	SE	SE	SE	SSE	SSE	SE	SE	SE	SE
51/52	6	5	6	6	8	10	11	12	9	7	6	5	4	5	6	6	7	8	8	9	8	9	8	7	6	6	6	8	10	11	12	12	10	8	7	6	5	4
	8	8	8	9	10	11	13	13	10	8	7	6	5	5	5	7	7	8	8	9	9	9	9	8	8	9	10	11	12	13	13	13	11	9	8	7	6	5
	NE	NE	ENE	ESE	SE	SE	SSE	SSE	SE	SE	ESE	ESE	E	ENE	ENE	ENE	NE	NE	NE	NE	NE	NE	NE	NNE	NE	ESE	SE	SE	SE	SE	SE	SSE	SSE	SE	SE	SE	SE	
37/38	7	6	6	6	8	9	10	10	8	7	6	5	4	4	4	5	6	6	6	7	8	8	8	7	6	6	7	8	9	10	10	9	7	6	5	4	3	2
	8	8	8	8	9	10	11	11	9	7	7	6	5	5	6	6	7	8	8	9	9	9	8	8	9	9	10	11	11	11	11	10	8	7	6	5	4	3
	NE	ENE	ENE	ESE	SE	SE	SE	SE	SE	SE	SE	ESE	ESE	E	ENE	ENE	NE	NE	NE	NE	NE	NE	NE	NE	ENE	E	ESE	SE	SE	SE	SE	SSE	SSE	SE	SE	SE	SE	SE
25/26	7	7	6	6	7	8	9	8	7	6	5	5	5	4	4	4	4	4	5	5	6	7	8	8	7	7	7	7	8	9	9	9	7	6	5	4	3	2
	8	8	8	8	8	9	9	9	8	7	7	6	5	5	5	6	6	7	7	8	8	8	8	8	9	9	10	10	10	10	10	9	8	7	6	5	4	3
	ENE	ENE	ENE	ESE	SE	SE	SE	SE	SE	SE	SE	ESE	ESE	E	ENE	ENE	NE	NE	NE	NE	NE	NE	NE	NE	ENE	E	ESE	ESE	SE	SE	SE	SE	SE	SE	SE	SE	SE	SE
11/12	8	8	7	7	8	8	8	8	7	6	6	5	5	5	5	5	5	5	6	6	6	7	8	8	7	7	7	8	9	8	8	7	6	5	4	3	2	1
	9	9	8	8	8	9	9	9	8	7	7	6	6	6	6	6	6	6	6	7	7	8	8	8	7	7	8	9	10	10	10	9	8	7	6	5	4	3
	ENE	ENE	E	ESE	SE	SE	SE	SE	SE	SE	SE	ESE	E	E	E	ENE	ENE	NE	NE	NE	NE	NE	NE	NE	ENE	E	ESE	ESE	SE	SE	SE	SE	SE	SE	SE	SE	SE	SE
1 & 2 Bravo	9	8	7	7	7	8	8	8	7	7	7	6	6	6	6	6	6	6	6	7	7	8	8	8	7	8	8	9	9	9	8	7	6	5	4	3	2	1
	10	9	9	8	8	9	9	9	8	8	7	7	6	6	6	6	6	6	6	7	7	8	8	8	8	8	9	9	10	10	10	9	8	7	6	5	4	3
	ENE	ENE	E	ESE	ESE	SE	SE	SE	SE	SE	SE	ESE	E	E	E	ENE	ENE	NE	NE	NE	NE	NE	NE	NE	ENE	E	E	ESE	ESE	SE	SE	SE	SE	SE	SE	SE	SE	ESE

NOTE: This is automated data that may/may not agree with the official BAM thinking that's found on the daily slides. This data should be used as a guide only

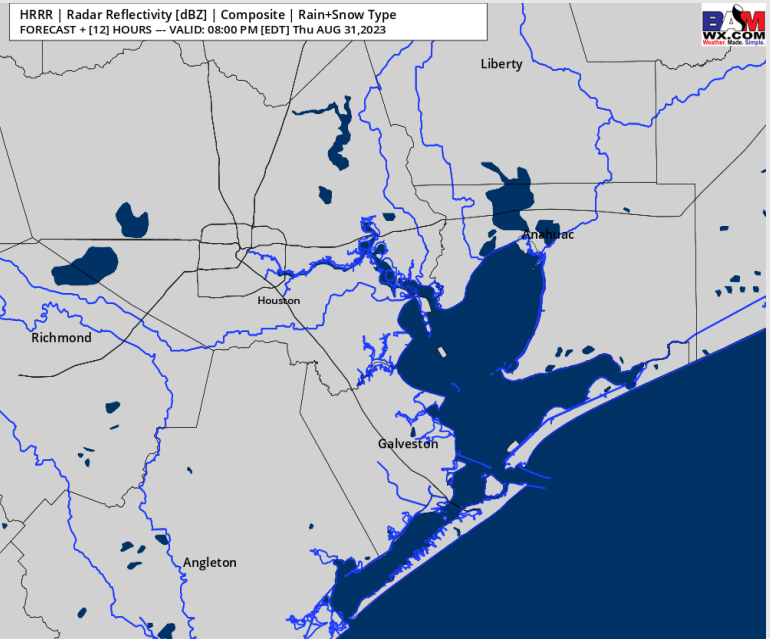
Houston Pilots: Thu. 8/31/2023



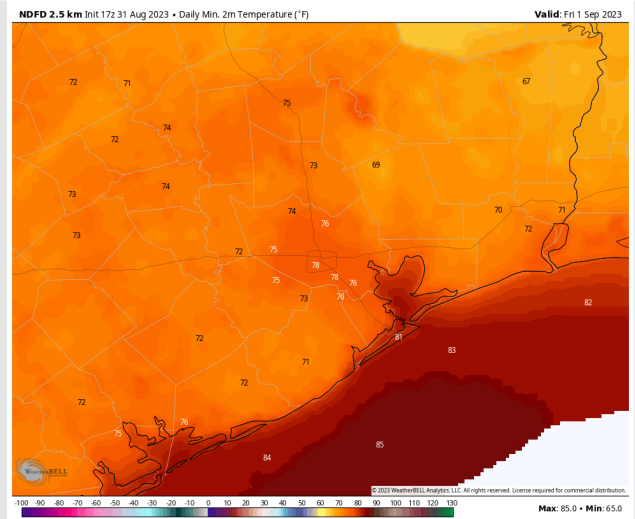
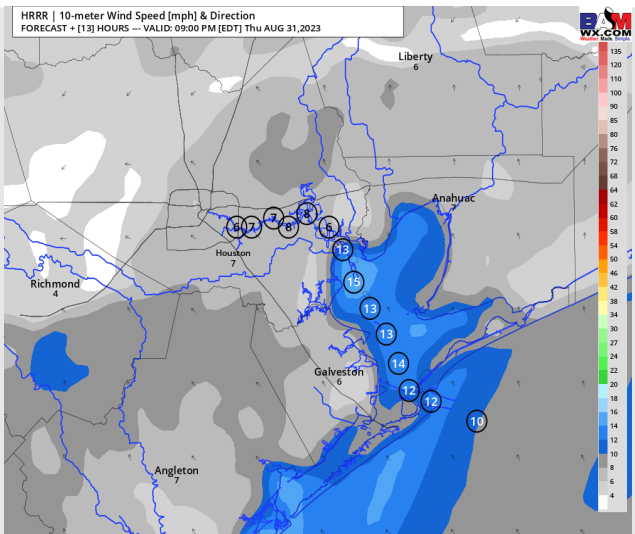
Forecast Discussion

- Precip:** Favoring dry conditions throughout the day.
- Wind:** Winds from the ENE will shift out of the SSE by 4 PM. **N of Morgan's Point:** Winds will remain at 3-7kts throughout the day with a slight uptick to 5 - 10 kts towards 6 PM. **S of Morgan's Point:** 4-9 kts until 5PM before increasing to 6 - 11 kts.
- Low Temps:** **S of Morgan's Point:** Low 80s F. **N of Morgan's Point:** Upper 70s F.
- Visibility:** No Visibility concerns at this time.

Precip Image: 7 PM CT



Wind Speed:
8 PM CT



Low Temps
FRI AM

Houston Pilots: Fri. 9/1/2023



Forecast Discussion

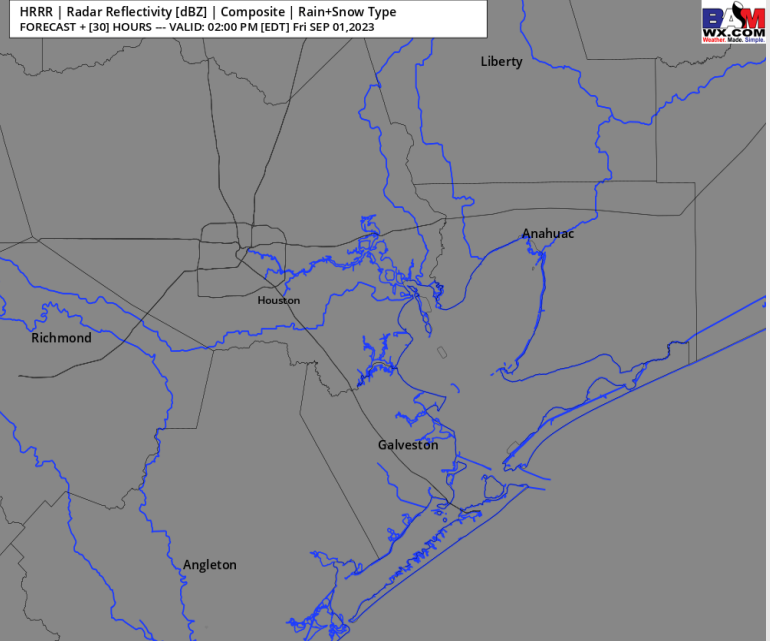
Precip: Anticipating dry conditions throughout the day Friday.

Wind: Winds out of the SSE will shift out of the ENE by 5 AM, then shift back out of the SSE by 3 PM for the remainder of the afternoon. **N of Morgan's Point:** 2 - 6 kts expected through 3 PM Friday, increasing to 6 - 11 kts after 3 PM. **S of Morgan's Point:** 2 - 7 kts through 4 PM, increasing to 8-13 kts after that time and continuing for the rest of the day.

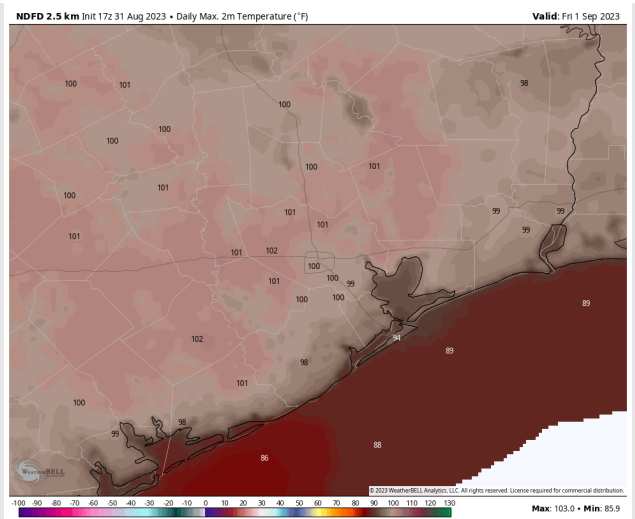
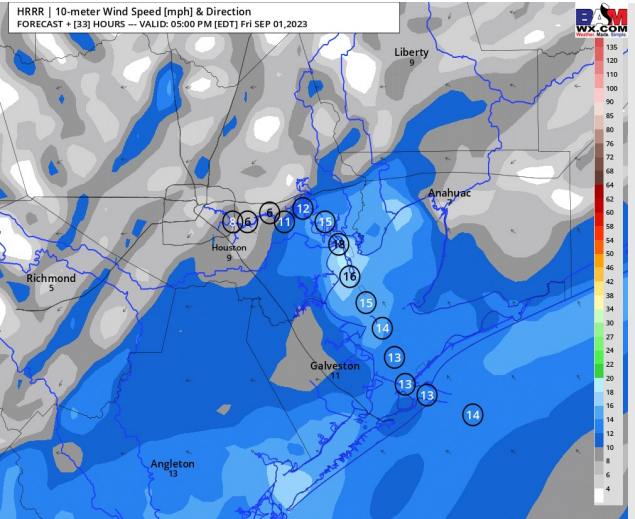
High Temps: **S of Morgan's Point:** Upper 80s F/Low 90s F. **N of Morgan's Point:** Upper 90s / Low 100s F.

Visibility: Not anticipating any fog issues at this time.

Precip Image: 1 PM CT



Wind Speed:
4 PM CT



High Temps
Friday

Houston Pilots: Sat. 9/2/2023



Forecast Discussion

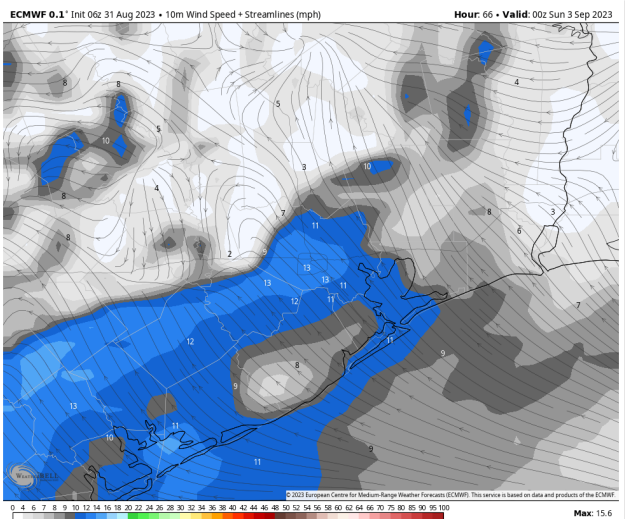
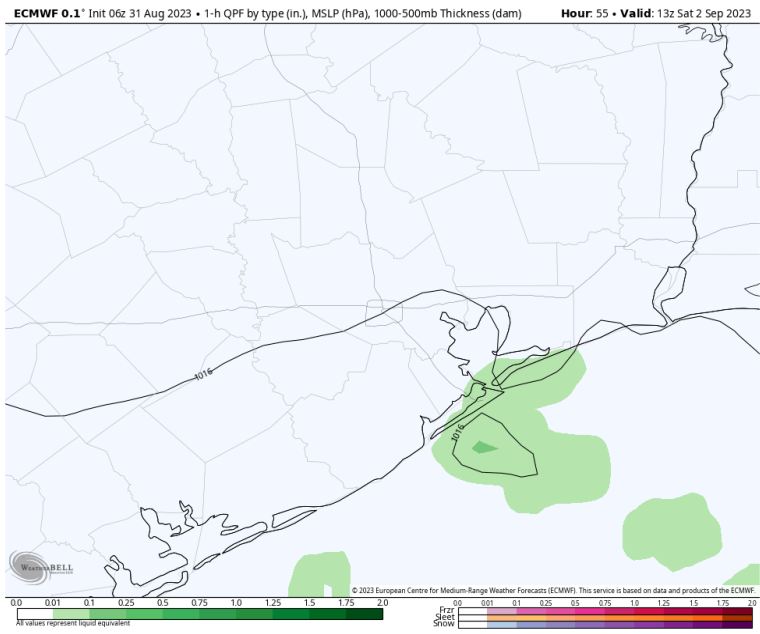
Precip: Favoring a low-end risk (20-30%) for hit/miss showers for Stations S of Morgan's Point between 11 AM – 6 PM. The Boarding Station can see a stray shower as early as 3 AM (20% chance).

Wind: Winds out of the SSW will shift out of the NNE by 8 AM. Winds will then veer clockwise and shift back out of the SSW by 5 PM. **N of Morgan's Point:** 1-6 kts until 1 PM, increasing to 5-10 for the remainder of the evening. **S of Morgan's Point:** 1-6 kts until 9 AM, increasing to 6-11 for the remainder of the day.

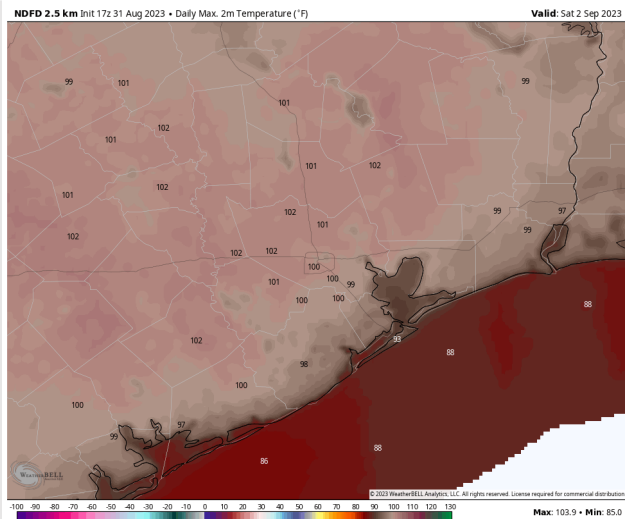
High Temps: **S of Morgan's Point:** Low 90s F. **N of Morgan's Point:** Upper 90s / near 100 F.

Visibility: No visibility issues expected Wednesday.

Precip Image: 8 AM CT

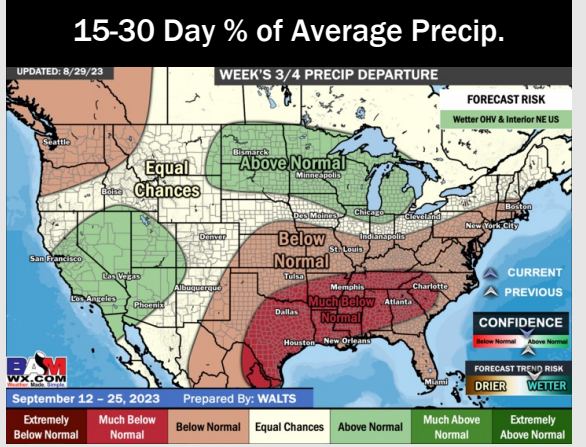
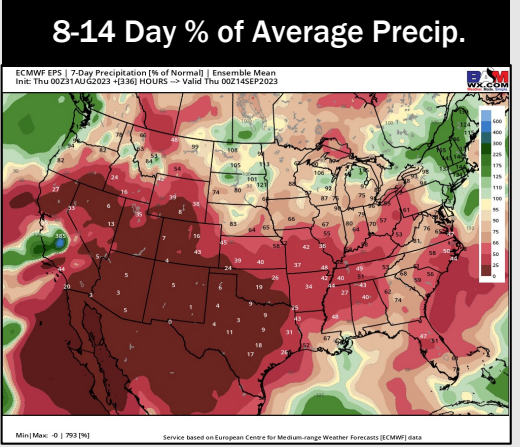
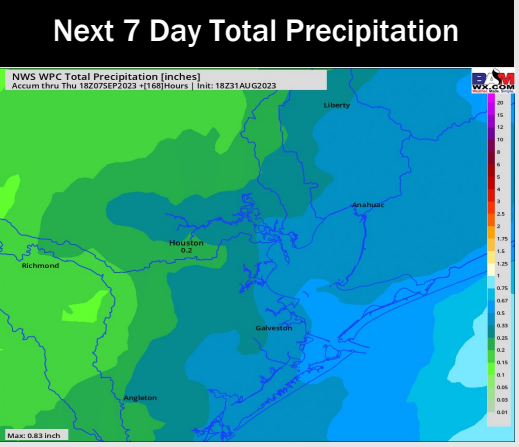
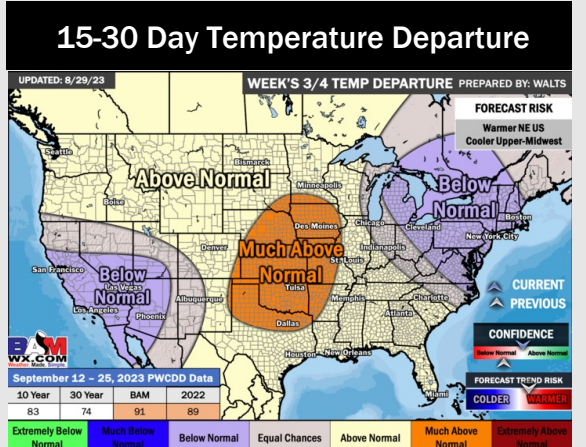
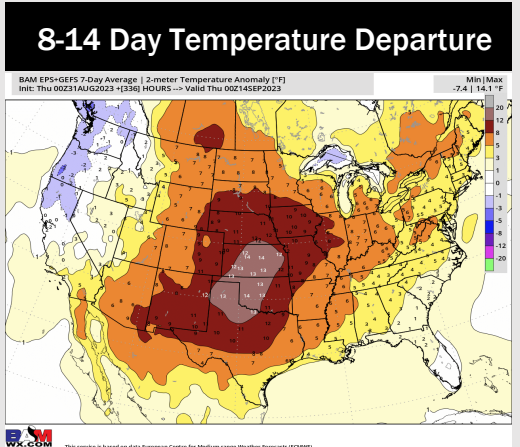
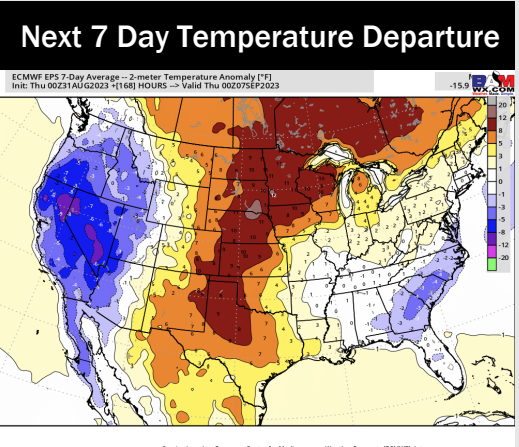


Wind Speed:
7 PM CT



High Temps
Saturday

Houston Pilots: 8/31/23



- Minor rain chances are expected to return Saturday AM with better chances moving in SUN - TUE week. Expecting temperatures to continue to remain above normal.
- Expecting below normal precipitation chances and above normal temperatures for the week 2 timeframe.
- Above normal temperatures and much below normal chances for precipitation are favored in the weeks ¾ timeframe.