

# Houston Pilots Forecast Package



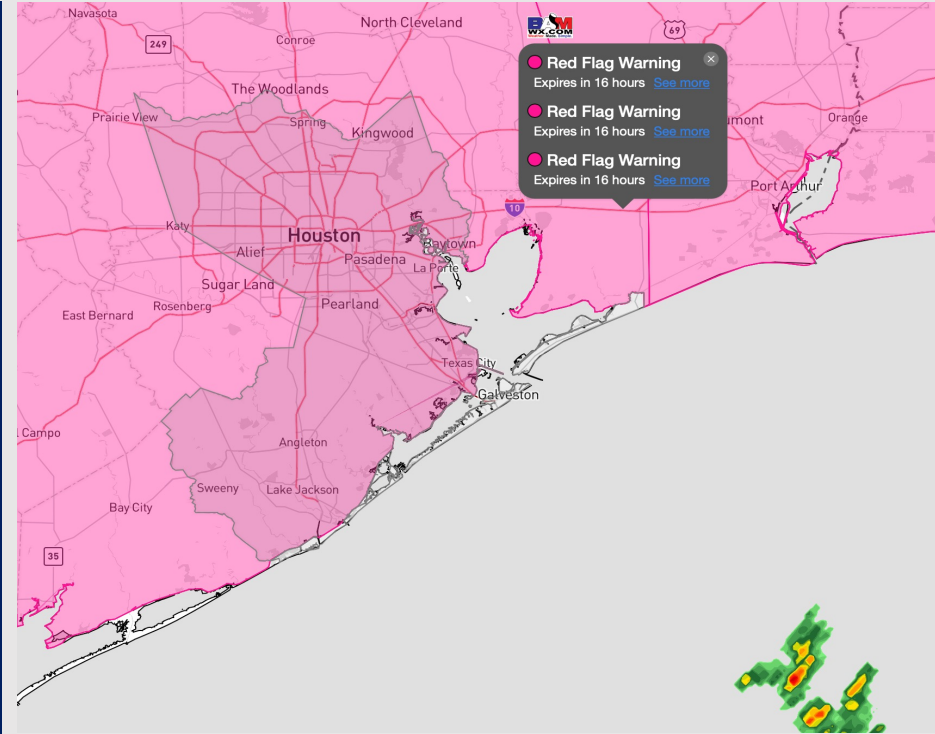
Updated: 4:00 AM CT

Wednesday, August 30, 2023

Forecaster: Alyssa McClung

## Weather Headlines

- **Hurricane Idalia in the eastern Gulf of Mexico has continued to intensify, but no impacts are favored for the Houston Area (See Tropical Update Slide for More Info)**
- **Only very minor rain chances possible over the next few days.**
- **Slightly cooler temperatures are expected over the next couple of days.**



**Radar/NWS Alerts: 3:45 AM CT**



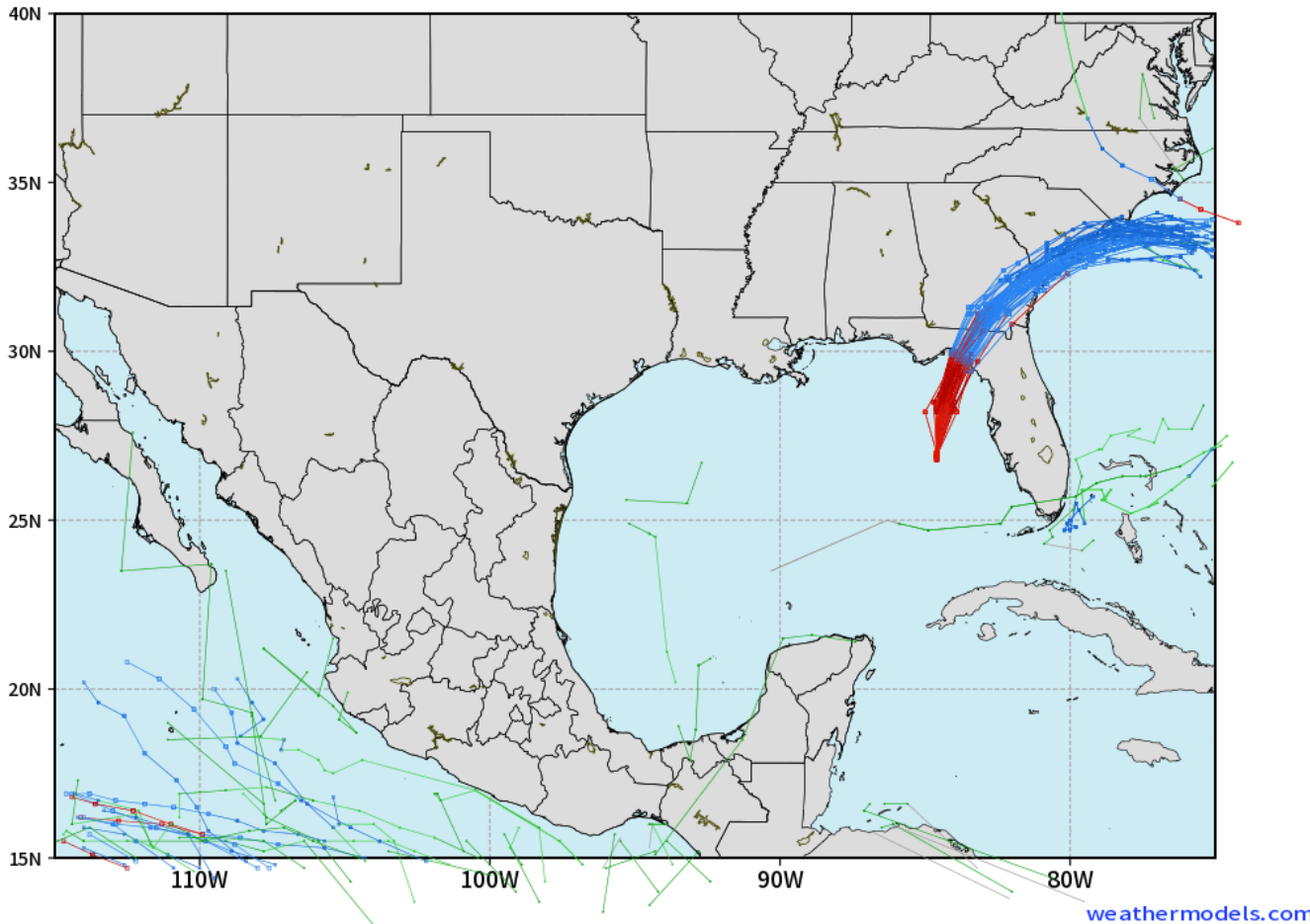
As always, please do not hesitate to reach out to us with any forecast questions via the chat option on the Weather Porthole or our on-call number, **(317)-560-8122** press 1 for forecast questions.

# Houston Pilots Tropical Update

## Tropical Storm Idalia Track Next 5 Days

ECMWF GULF EPS Cyclone Locations --> Next [10-days]  
INIT: 00Z30AUG2023 --> UNTIL 00Z09SEP2023

o-o ENSEMBLE MEAN  
o-o 1000 - 1010 hPa  
o-o 980 - 999 hPa  
o-o 960 - 979 hPa  
o-o 950 - 959 hPa  
o-o < 950 hPa



Hurricane Idalia is now officially a Category 4 hurricane as of 5 AM this morning. It is expected to quickly intensify into a major hurricane impacting the west coast of FL. No direct impacts to Houston favored with 10/10 confidence, and at this time no additional development of tropical cyclones favored for the gulf over the next 7 days.

# Houston Pilots Visibility Chart (miles)



## Forecast Confidence



Time	Wed 3am	Wed 4am	Wed 5am	Wed 6am	Wed 7am	Wed 8am	Wed 9am	Wed 10am	Wed 11am	Wed 12pm	Wed 1pm	Wed 2pm	Wed 3pm	Wed 4pm	Wed 5pm	Wed 6pm	Wed 7pm	Wed 8pm	Wed 9pm	Wed 10pm	Wed 11pm	Thu 12am	Thu 1am	Thu 2am	Thu 3am	Thu 4am	Thu 5am	Thu 6am	Thu 7am	Thu 8am	Thu 9am	Thu 10am	Thu 11am	Thu 12pm	Thu 1pm	Thu 2pm	
610 Bridge	10	10	10	10	10	10	10	10	10	10	10	10	10	10	10	10	10	10	10	10	10	10	10	10	10	8	10	10	10	10	10	10	10	10	10	10	10
Kinder 1	10	10	10	10	10	10	10	10	10	10	10	10	10	10	10	10	10	10	10	10	10	10	10	10	10	9	10	10	10	10	10	10	10	10	10	10	10
Greens Bayou	10	10	10	10	10	10	10	10	10	10	10	10	10	10	10	10	10	10	10	10	10	10	10	10	10	10	10	10	10	10	10	10	10	10	10	10	10
Shell Crude	10	10	10	10	10	10	10	10	10	10	10	10	10	10	10	10	10	10	10	10	10	10	10	10	10	10	10	10	10	10	10	10	10	10	10	10	10
Lynchburg Ferries	10	10	10	10	10	10	10	10	10	10	10	10	10	10	10	10	10	10	10	10	10	10	10	10	10	10	10	10	10	10	10	10	10	10	10	10	10
Exxon 3	10	10	10	10	10	10	10	10	10	10	10	10	10	10	10	10	10	10	10	10	10	10	10	10	10	10	10	10	10	10	10	10	10	10	10	10	10
Morgans Point	10	10	10	10	10	10	10	10	10	10	10	10	10	10	10	10	10	10	10	10	10	10	10	10	10	10	10	10	10	10	10	10	10	10	10	10	10
75/76	10	10	10	10	10	10	10	10	10	10	10	10	10	10	10	10	10	10	10	10	10	10	10	10	10	10	10	10	10	10	10	10	10	10	10	10	10
63/64	10	10	10	10	10	10	10	10	10	10	10	10	10	10	10	10	10	10	10	10	10	10	10	10	10	10	10	10	10	10	10	10	10	10	10	10	10
51/52	10	10	10	10	10	10	10	10	10	10	10	10	10	10	10	10	10	10	10	10	10	10	10	10	10	10	10	10	10	10	10	10	10	10	10	10	10
37/38	10	10	10	10	10	10	10	10	10	10	10	10	10	10	10	10	10	10	10	10	10	10	10	10	10	10	10	10	10	10	10	10	10	10	10	10	10
25/26	10	10	10	10	10	10	10	10	10	10	10	10	10	10	10	10	10	10	10	10	10	10	10	10	10	10	10	10	10	10	10	10	10	10	10	10	10
11/12	10	10	10	10	10	10	10	10	10	10	10	10	10	10	10	10	10	10	10	10	10	10	10	10	10	10	10	10	10	10	10	10	10	10	10	10	10
1 & 2 Bravo	10	10	10	10	10	10	10	10	10	10	10	10	10	10	10	10	10	10	10	10	10	10	10	10	10	10	10	10	10	10	10	10	10	10	10	10	10

**NOTE: This is automated data that may/may not agree with the official BAM thinking that's found on the daily slides or special visibility report slides. This data should be used as a guide only**

# Houston Pilots Wind Chart



## Forecast Confidence



## Example

Sustained wind 13 Knots  
Gusts 18 Knots  
Wind from the N

WS: 13  
G:18  
N

Time Knots	Wed 3am	Wed 4am	Wed 5am	Wed 6am	Wed 7am	Wed 8am	Wed 9am	Wed 10am	Wed 11am	Wed 12pm	Wed 1pm	Wed 2pm	Wed 3pm	Wed 4pm	Wed 5pm	Wed 6pm	Wed 7pm	Wed 8pm	Wed 9pm	Wed 10pm	Wed 11pm	Thu 12am	Thu 1am	Thu 2am	Thu 3am	Thu 4am	Thu 5am	Thu 6am	Thu 7am	Thu 8am	Thu 9am	Thu 10am	Thu 11am	Thu 12pm	Thu 1pm	Thu 2pm
610 Bridge	5	5	4	5	4	6	7	7	8	9	9	9	9	8	9	8	6	5	5	4	4	4	3	3	3	2	2	2	2	3	5	5	5	6		
	7	8	7	7	7	9	10	11	12	13	14	14	13	13	12	12	9	8	8	7	6	6	5	5	5	3	3	3	5	7	7	8	8	9		
	NNE	N	N	N	N	NNE	NNE	NNE	NNE	NNE	NNE	NNE	NNE	NNE	N	NNE	NNE	NE	NE	E	E	E	ESE	ESE	NNE	NE	NE	NE	NE	ENE	ENE	NE	NE	NE		
Kinder 1	5	5	4	4	4	6	7	7	8	9	9	9	8	8	9	8	6	5	5	4	4	4	3	3	3	2	2	2	3	5	5	5	5	6		
	7	7	7	7	7	9	10	11	12	13	14	14	13	13	12	12	9	8	8	7	6	6	5	4	4	3	3	3	5	6	7	8	8	9		
	NNE	N	N	N	N	NNE	NNE	NNE	NNE	NNE	NNE	NNE	NNE	NNE	N	NNE	NNE	NE	ENE	E	E	E	E	ENE	NE	NE	NE	NE	ENE	ENE	NE	NE	NE	NE		
Greens Bayou	5	5	4	4	4	6	7	7	8	8	9	9	9	8	8	9	8	6	5	5	4	4	4	3	3	3	2	2	2	3	5	5	5	5	6	
	7	7	7	7	7	9	10	11	12	13	14	13	13	12	12	11	9	8	8	7	6	6	5	4	4	3	3	4	5	6	7	8	8	9		
	NNE	N	N	N	N	NNE	NNE	NNE	NNE	NNE	NNE	NNE	NNE	NNE	N	NNE	NNE	ENE	ENE	E	E	ENE	ENE	NE	NE	NE	NE	NE	ENE	ENE	NE	NE	NE	NE		
Shell Crude	5	5	5	5	5	6	7	8	8	8	9	9	9	8	8	9	8	6	5	5	4	4	4	3	3	2	2	2	3	5	5	5	5	6		
	8	7	7	7	7	9	10	11	12	12	13	13	13	13	12	12	11	9	8	8	7	6	6	5	4	4	3	3	4	5	6	7	8	8	9	
	NNE	N	N	N	N	NNE	NNE	NNE	NNE	NNE	NNE	NNE	NNE	NNE	NNE	N	NNE	NE	ENE	E	ENE	ENE	ENE	E	NE	NE	NNE	NNE	NE	NE	ENE	ENE	NE	NE	NE	
Lynchburg Ferries	6	6	5	5	5	6	7	8	8	8	9	9	9	9	9	8	6	6	5	5	4	4	4	3	3	2	3	4	6	6	5	6	6	6		
	8	8	7	7	7	9	10	11	12	12	13	13	13	13	12	11	9	8	8	7	6	6	5	4	4	3	4	4	5	7	8	7	8	8	9	
	N	N	N	N	N	NNE	NNE	NNE	NNE	NNE	NNE	NNE	NNE	NNE	NNE	NNE	NE	ENE	E	ENE	ENE	ENE	ENE	NNE	NE	NNE	NNE	NE	NE	ENE	ENE	NE	NE	NE	NE	
Exxon 3	7	6	6	6	6	6	8	8	8	8	9	9	9	10	9	8	7	6	6	5	5	5	4	4	4	3	3	4	6	6	6	6	6	7		
	9	9	8	8	8	9	10	11	11	12	13	13	13	13	12	11	9	8	8	7	6	6	6	5	5	4	4	5	6	7	8	7	8	9	10	
	N	N	N	N	N	NNE	NNE	NNE	NNE	NNE	NNE	NNE	NNE	NNE	N	NNE	ENE	E	ENE	ENE	ENE	ENE	NE	NNE	NE	NNE	NE	NE	ENE	ENE	NE	NE	ENE	ENE	NE	NE
Morgans Point	9	8	8	8	7	8	8	9	9	9	9	9	9	10	9	9	8	7	7	6	6	6	5	5	5	5	5	5	5	7	6	6	6	7		
	11	10	10	10	9	10	11	11	11	12	13	14	13	13	12	11	10	9	9	8	8	7	7	6	6	6	6	6	7	8	8	8	9	9	10	
	NNE	NNE	NNE	NNE	N	NNE	NNE	NNE	NNE	NNE	NNE	NNE	NNE	NNE	NNE	NNE	NE	E	E	ENE	NE	NE	NE	NNE	NNE	NNE	NNE	NE	NE	ENE	ENE	ENE	ENE	ENE	ENE	
75/76	12	12	12	11	10	10	10	10	9	8	8	8	9	9	10	10	11	10	9	8	8	8	7	7	7	6	6	7	8	8	7	6	6	7		
	13	13	13	12	12	12	12	11	11	12	12	13	13	13	12	11	10	9	9	9	9	9	8	8	8	8	7	7	9	9	8	9	8	9	11	
	NNE	NNE	NNE	NNE	NNE	NNE	NNE	NNE	NNE	NE	NE	NE	NE	NE	NE	NE	ENE	E	ESE	E	E	NE	NE	NE	NE	NNE	NNE	NE	NE	NE	ENE	ENE	ENE	E	ESE	
63/64	14	13	13	13	12	12	11	11	9	8	8	8	9	9	10	11	10	9	8	8	8	8	8	8	7	7	7	8	9	8	7	5	6	6		
	15	15	15	14	14	13	13	12	12	11	12	13	12	12	12	11	10	9	9	9	9	9	8	8	8	8	8	9	10	9	9	8	9	10		
	NNE	NNE	NNE	NNE	NNE	NNE	NNE	NNE	NNE	NE	NE	NE	NE	NE	ENE	E	ESE	E	ENE	NE	NNE	NE	NNE	NE	NE	NE	NE	NE	ENE	ENE	ENE	ENE	ENE	ENE		
51/52	14	13	13	13	12	12	11	9	8	8	8	8	8	9	10	10	9	8	8	7	7	7	7	7	6	6	7	8	9	8	7	5	5	6		
	15	15	15	14	14	13	13	12	11	11	12	12	12	12	12	11	10	9	9	9	9	8	8	8	8	7	7	8	9	10	9	8	8	8	9	
	NNE	NNE	NNE	NNE	NNE	NNE	NNE	NNE	NNE	NNE	NNE	NNE	NNE	NNE	NE	ENE	E	ESE	E	ENE	SE	SE	SE	SE	SE	SE	SE	SE	NE	NE	ENE	ENE	ENE	ENE	ENE	
37/38	13	13	13	13	12	12	11	10	9	8	7	7	8	8	9	8	7	6	6	7	7	7	7	7	6	6	7	8	9	8	7	6	6	6		
	15	14	14	14	14	13	12	11	11	11	11	11	11	11	10	10	9	8	8	8	8	8	7	7	7	7	7	8	9	9	8	8	8	8	8	
	NNE	NNE	NNE	NNE	NNE	NNE	NNE	NNE	NNE	NNE	NNE	NNE	NNE	NNE	NE	E	SE	SE	SE	ESE	NE	ENE	NE	NNE	NNE	NNE	NE	NE	NE	ENE	ENE	ENE	ENE	ENE	E	
25/26	12	11	11	11	11	11	11	10	9	9	8	7	7	7	7	6	5	5	5	5	6	6	6	6	6	6	6	7	8	8	7	6	6	6		
	14	13	13	13	13	13	12	11	11	11	10	10	10	10	9	9	8	7	7	7	7	7	8	7	7	7	6	7	8	9	8	8	8	8	7	
	NNE	NNE	NNE	NNE	NNE	NNE	NNE	NNE	NNE	NNE	NNE	NNE	NNE	NNE	ENE	ESE	SE	SE	SSE	ESE	NE	ESE	ESE	NE	NNE	NNE	NNE	NNE	NE	NE	ENE	ENE	ENE	ENE	E	
11/12	11	11	11	11	11	11	11	10	9	9	7	7	7	7	7	6	5	5	5	5	6	6	6	6	6	6	6	7	8	8	7	6	6	6		
	14	13	13	13	13	13	12	11	11	10	9	9	9	9	8	8	8	8	8	8	8	8	8	7	7	7	7	8	9	8	8	8	8	7		
	NNE	NNE	NNE	NNE	NNE	NNE	NNE	NNE	NNE	NNE	NNE	NE	E	SE	SSE	SSE	SSE	SSE	SSE	ESE	NNE	E	ENE	NNE	NNE	NNE	NNE	NE	NE	ENE	ENE	ENE	ENE	ENE	ESE	
1 & 2 Bravo	14	14	14	14	13	13	13	12	10	8	5	6	7	7	7	6	5	6	6	6	7	7	8	8	8	8	8	9	9	9	8	7	6	6		
	16	16	15	15	14	14	14	13	11	10	8	8	8	8	8	8	8	8	8	8	8	8	8	8	8	8	9	10	10	9	9	8	8	7		
	NNE	NNE	NNE	NNE	NNE	NNE	NNE	NNE	NNE	NNE	ENE	SE	SSE	SSE	SSE	SSE	SSE	SSE	SSE	ESE	E	NNE	N	NNE	NE	NE	NNE	NNE	NNE	NE	NE	ENE	ENE	ENE	ESE	

NOTE: This is automated data that may/may not agree with the official BAM thinking that's found on the daily slides. This data should be used as a guide only

## Forecast Discussion

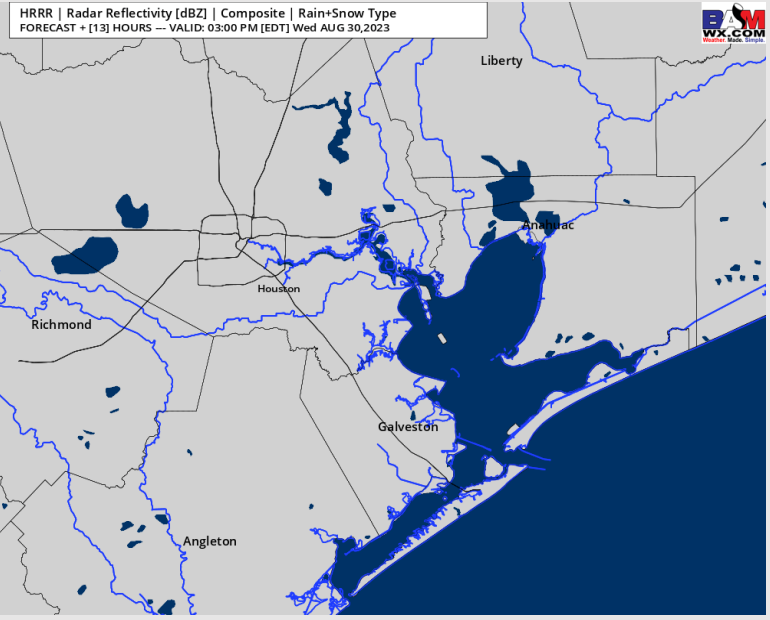
**Precip:** Favoring dry conditions throughout the day today.

**Wind:** Winds are out of the NE this morning and are expected to remain out of the NE until 8 PM, then winds are expected to shift out of the SSW. **N of Morgan's Point:** 1-6 kts through 9 AM, increasing to 5-10 kts through 8 PM. After 8 PM, winds will decrease back to 1-6 kts for the rest of the day. Gusts expected to get up towards 20 kts. **S of Morgan's Point:** Winds at 10-15 kts expected to continue through 2 PM, briefly decreasing to 3-8 kts through 5 PM before increasing to 5-10 kts for the remainder of the evening.

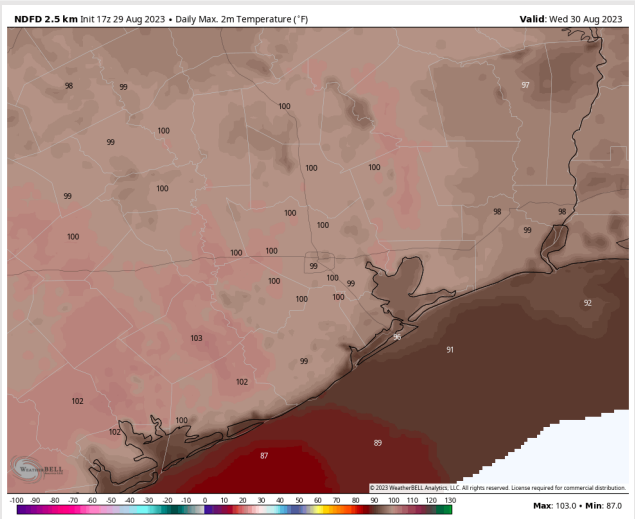
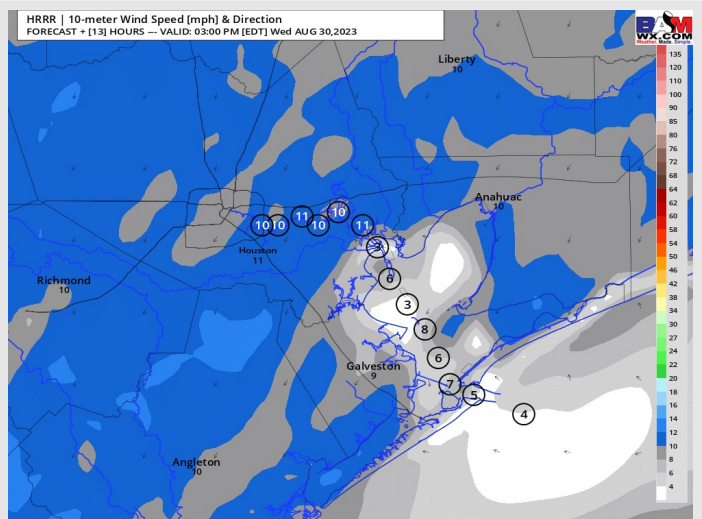
**High Temps:** **S of Morgan's Point:** Low/mid 90s F. **N of Morgan's Point:** Upper 90s F/Low 100s F.

**Visibility:** No visibility issues expected Wednesday.

## Precip Image: 2 PM CT



Wind Speed:  
2 PM CT



High Temps  
Wednesday

# Houston Pilots: Thu. 8/31/2023



## Forecast Discussion

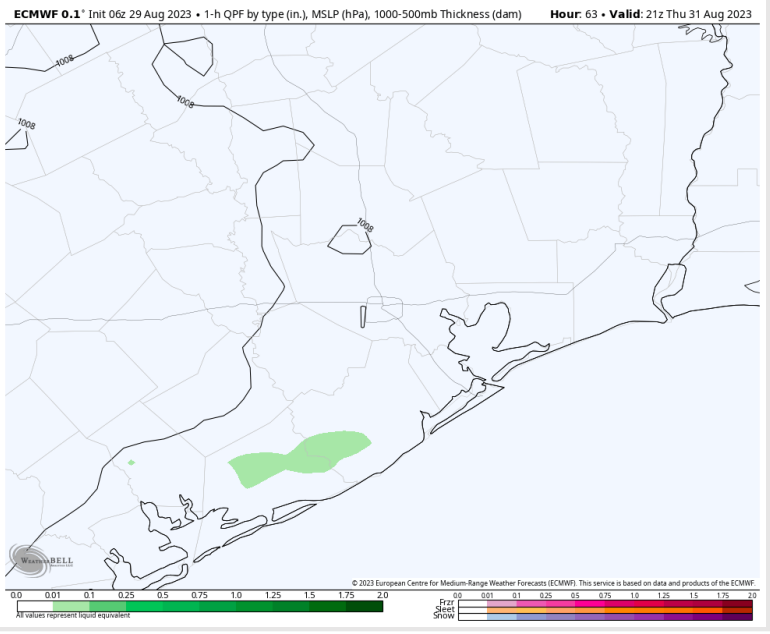
**Precip:** Favoring a 20% chance for isolated showers from 3PM-7PM.

**Wind:** Winds will gradually shift from the west to the east by early afternoon, and then out of the south by early evening, with lower confidence on the exact timing due to tropical influences. **N of Morgan's Point:** Winds will remain at 3-7kts through 5 PM, then slightly increase to 5-10 kts through the remainder of the evening. **S of Morgan's Point:** 6-11 kts for majority of the day, becoming 12-15kts from 4PM-8PM before dropping down to 10-13kts.

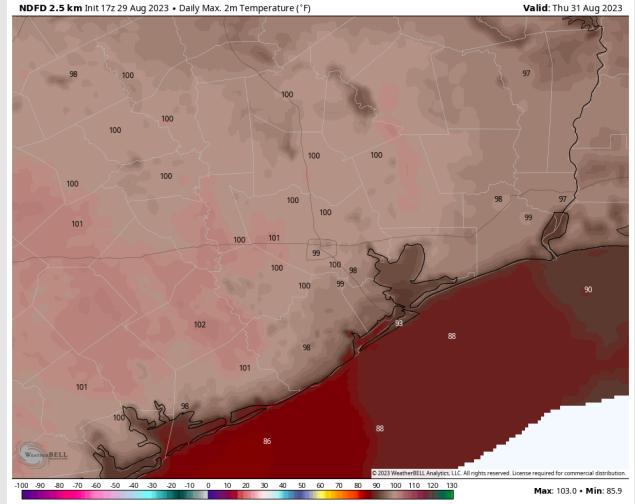
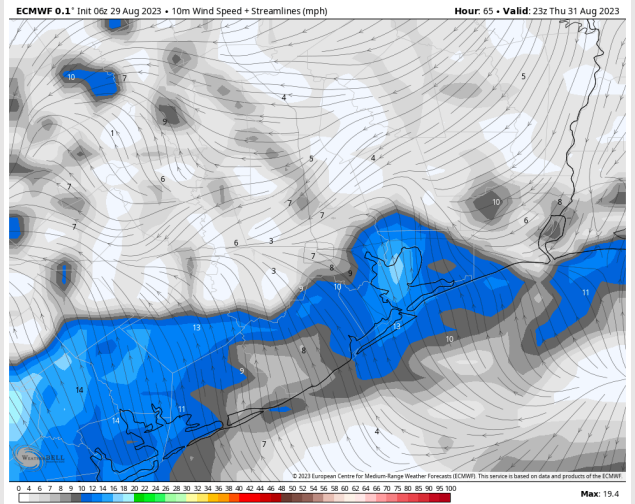
**High Temps:** **S of Morgan's Point:** Low/Mid 90s F. **N of Morgan's Point:** Upper 90s F/Low 100s F.

**Visibility:** No Visibility concerns at this time.

## Precip Image: 4 PM CT



Wind Speed:  
6 PM CT



High Temps  
Thursday

# Houston Pilots: Fri. 9/1/2023



## Forecast Discussion

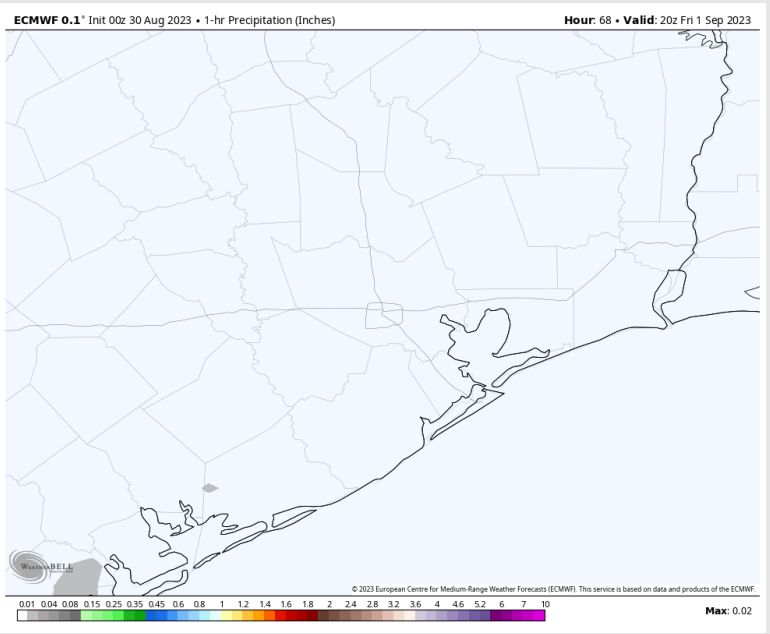
**Precip:** Anticipating dry conditions throughout the day Friday.

**Wind:** Winds expected to be variable throughout the day Friday, then shifting to be out of the SSE by 3 PM where winds will remain for the rest of the day. **N of Morgan's Point:** 1-5 kts expected through 3 PM Friday, increasing to 5-10 kts after 3 PM and through the rest of the evening. **S of Morgan's Point:** 1-5 kts through the first half of the day, increasing to 8-13 kts after 3 PM and continuing for the rest of the day.

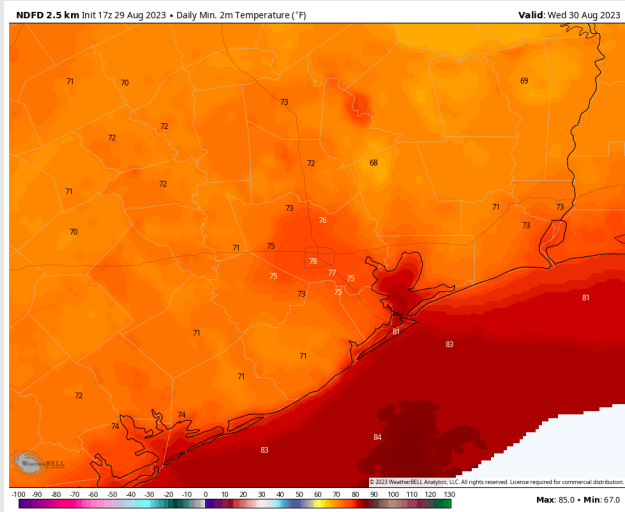
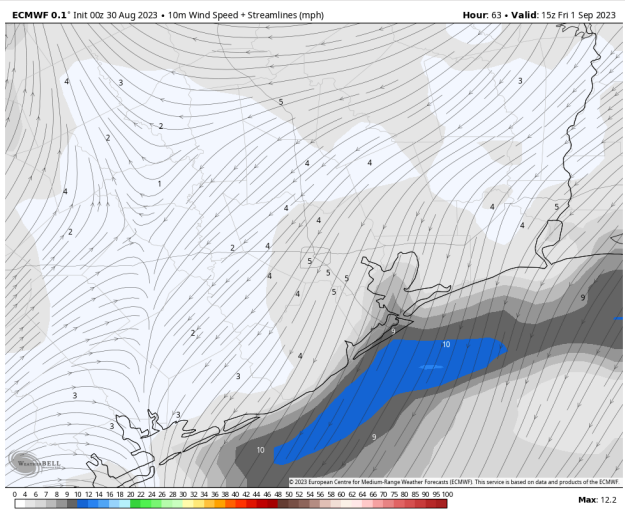
**HIGH Temps:** **S of Morgan's Point:** Upper 80s F/Low 90s F. **N of Morgan's Point:** Upper 90s / Low 100s F.

**Visibility:** Not anticipating any fog issues at this time.

## Precip Image: 3 PM CT

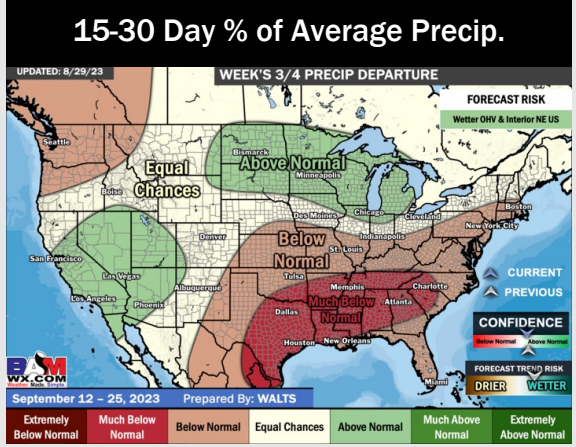
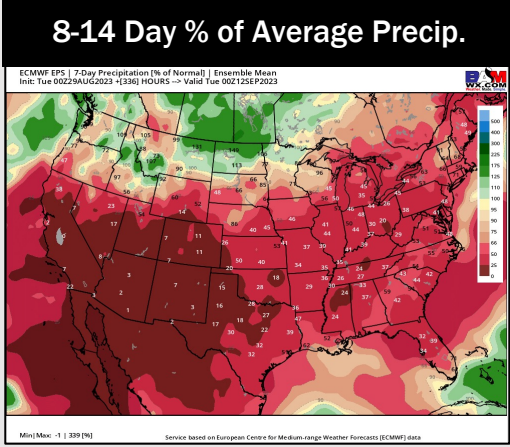
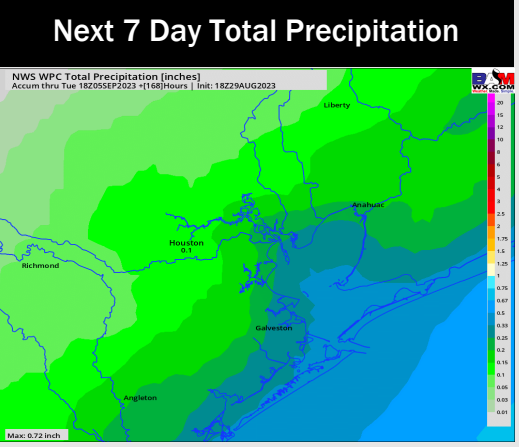
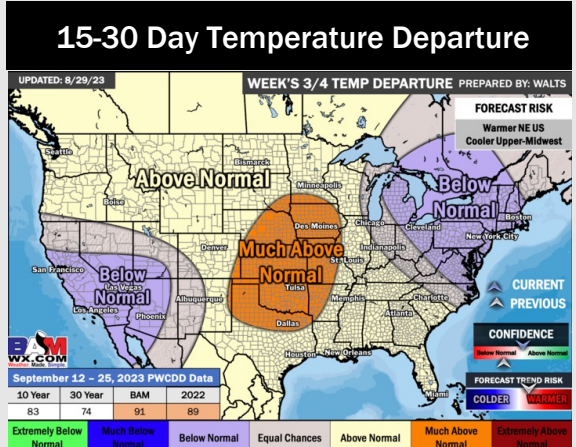
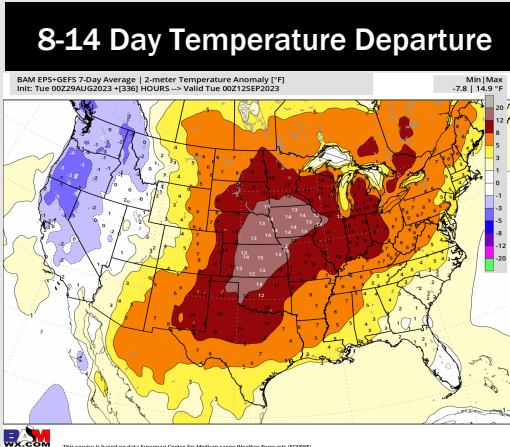
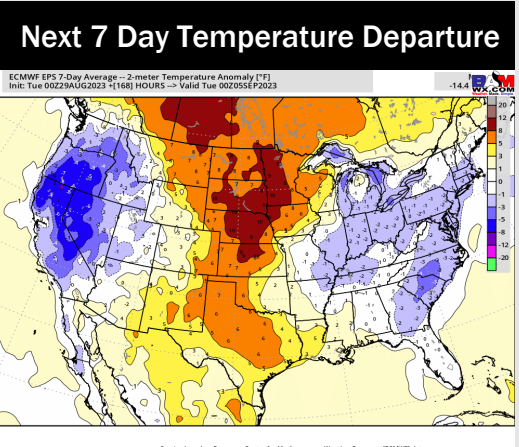


Wind Speed:  
10 AM CT



High Temps  
Friday

# Houston Pilots: 8/30/23



- Minor rain chances are expected over the next few days. Expect temperatures to continue to remain above normal.
- Expecting much below normal precipitation chances and above normal temperatures for the week 2 timeframe.
- Above normal temperatures and much below normal chances for precipitation are favored in the weeks 3/4 timeframe.