

# Houston Pilots Forecast Package



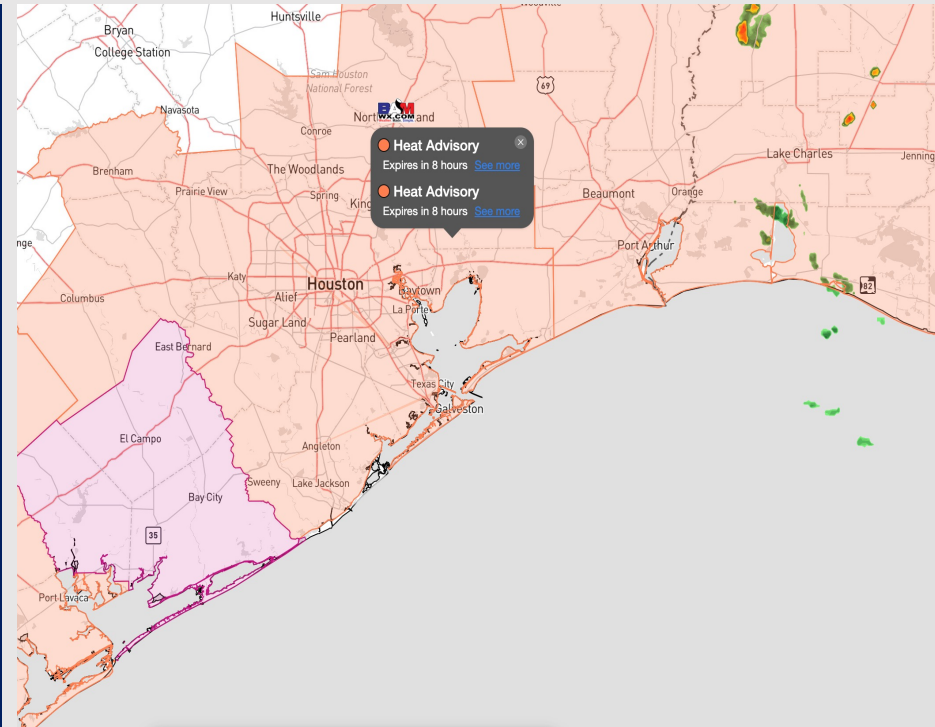
Updated: 2:00 PM CT

Monday, August 28, 2023

Forecaster: John Kemper

## Weather Headlines

- **Monitoring Tropical Storm Idalia in the eastern Gulf of Mexico for middle of this week, however not favoring any impacts for HOU.**
- **Hit/miss showers/storms will be possible over the next 2 days.**
- **Expecting temperatures to cool slightly through the early-mid week period.**



**Radar/NWS Alerts: 1:40 PM CT**



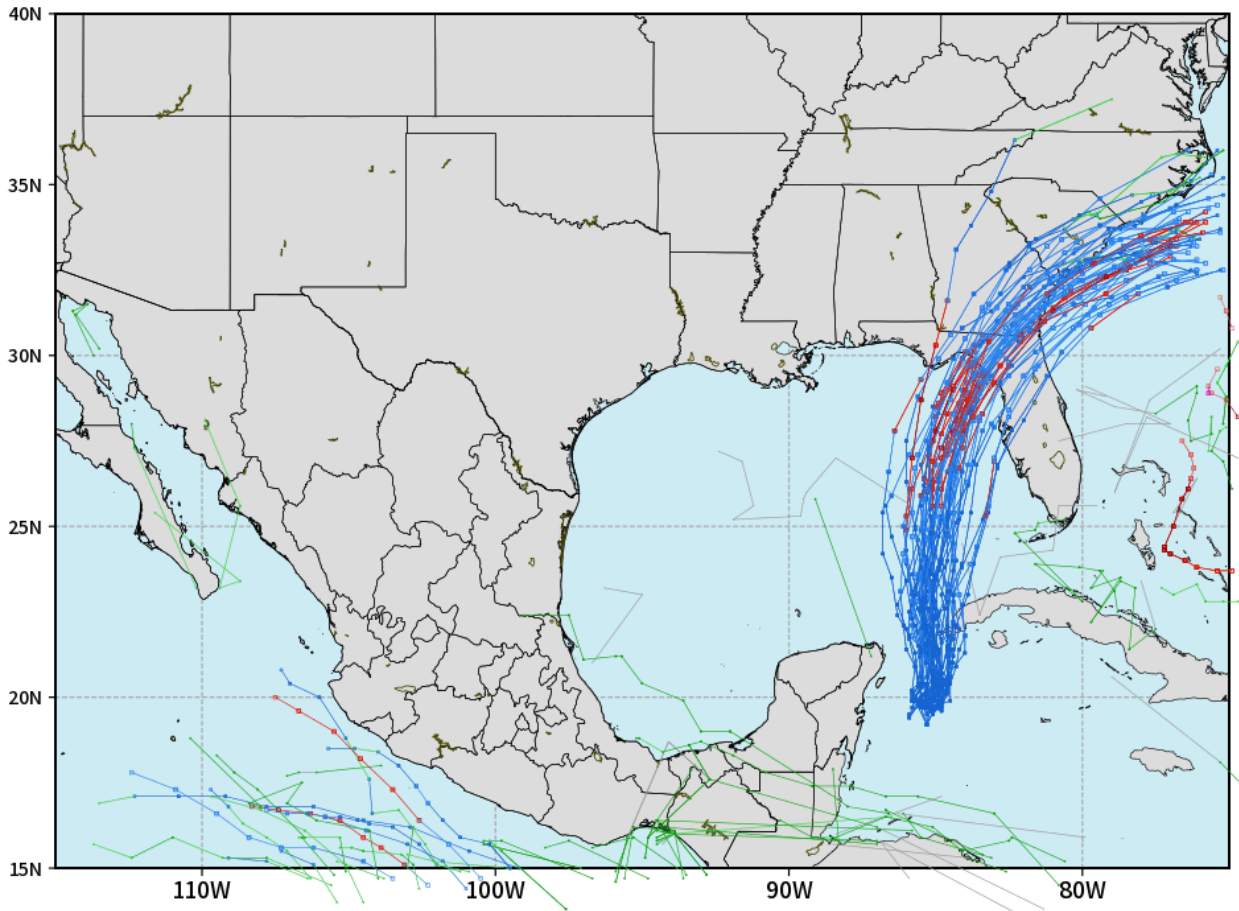
As always, please do not hesitate to reach out to us with any forecast questions via the chat option on the Weather Porthole or our on-call number, **(317)-560-8122** press **1** for forecast questions.

# Houston Pilots Tropical Update

## Tropical Storm Idalia Track Next 5 Days

ECMWF GULF EPS Cyclone Locations --> Next [10-days]  
INIT: 00Z28AUG2023 --> UNTIL 00Z07SEP2023

o-o ENSEMBLE MEAN  
o-o 1000 - 1010 hPa  
o-o 980 - 999 hPa  
o-o 960 - 979 hPa  
o-o 950 - 959 hPa  
o-o < 950 hPa



weathermodels.com

**Tropical Storm Idalia will likely strengthen into a Hurricane by 6PM-CT, and quickly intensify into a major hurricane impacting FL. No direct impacts to Houston favored with 10/10 confidence, and at this time no additional development of tropical cyclones favored for the gulf over the next 7 days.**

# Houston Pilots Visibility Chart (miles)



## Forecast Confidence



Time	Mon 1pm	Mon 2pm	Mon 3pm	Mon 4pm	Mon 5pm	Mon 6pm	Mon 7pm	Mon 8pm	Mon 9pm	Mon 10pm	Mon 11pm	Tue 12am	Tue 1am	Tue 2am	Tue 3am	Tue 4am	Tue 5am	Tue 6am	Tue 7am	Tue 8am	Tue 9am	Tue 10am	Tue 11am	Tue 12pm	Tue 1pm	Tue 2pm	Tue 3pm	Tue 4pm	Tue 5pm	Tue 6pm	Tue 7pm	Tue 8pm	Tue 9pm	Tue 10pm	Tue 11pm	Wed 12am	
610 Bridge	10	10	10	10	10	10	10	10	10	10	10	10	10	10	10	10	10	10	10	10	10	10	10	10	10	10	10	10	10	10	10	10	10	10	10	10	10
Kinder 1	10	10	10	10	10	10	10	10	10	10	10	10	10	10	10	10	10	10	10	10	10	10	10	10	10	10	10	10	10	10	10	10	10	10	10	10	10
Greens Bayou	10	10	10	10	10	10	10	10	10	10	10	10	10	10	10	10	10	10	10	10	10	10	10	10	10	10	10	10	10	10	10	10	10	10	10	10	10
Shell Crude	10	10	10	10	10	10	10	10	10	10	10	10	10	10	10	10	10	10	10	10	10	10	10	10	10	10	10	10	10	10	10	10	10	10	10	10	10
Lynchburg Ferries	10	10	10	10	10	10	10	10	10	10	10	10	10	10	10	10	10	10	10	10	10	10	10	10	10	10	10	10	10	10	10	10	10	10	10	10	10
Exxon 3	10	10	10	10	10	10	10	10	10	10	10	10	10	10	10	10	10	10	10	10	10	10	10	10	10	10	10	10	10	10	10	10	10	10	10	10	10
Morgans Point	10	10	10	10	10	10	10	10	10	10	10	10	10	10	10	10	10	10	10	10	10	10	10	10	10	10	10	10	10	10	10	10	10	10	10	10	10
75/76	10	10	10	10	10	10	10	10	10	10	10	10	10	10	10	10	10	10	10	10	10	10	10	10	10	10	10	10	10	10	10	10	10	10	10	10	10
63/64	10	10	10	10	10	10	10	10	10	10	10	10	10	10	10	10	10	10	10	10	10	10	10	10	10	10	10	10	10	10	10	10	10	10	10	10	10
51/52	10	10	10	10	10	10	10	10	10	10	10	10	10	10	10	10	10	10	10	10	10	10	10	10	10	10	10	10	10	10	10	10	10	10	10	10	10
37/38	10	10	10	10	10	10	10	10	10	10	10	10	10	10	10	10	10	10	10	10	10	10	10	10	10	10	10	10	10	10	10	10	10	10	10	10	10
25/26	10	10	10	10	10	10	10	10	10	10	10	10	10	10	10	10	10	10	10	10	10	10	10	10	10	10	10	10	10	10	10	10	10	10	10	10	10
11/12	10	10	10	10	10	10	10	10	10	10	10	10	10	10	10	10	10	10	10	10	10	10	10	10	10	10	10	10	10	10	10	10	10	10	10	10	10
1 & 2 Bravo	10	10	10	10	10	10	10	10	10	10	10	10	10	10	10	10	10	10	10	10	10	10	10	10	10	10	10	10	10	10	10	10	10	10	10	10	10

**NOTE: This is automated data that may/may not agree with the official BAM thinking that's found on the daily slides or special visibility report slides. This data should be used as a guide only**

# Houston Pilots Wind Chart



## Forecast Confidence



## Example

Sustained wind 13 Knots  
Gusts 18 Knots  
Wind from the N

WS: 13  
G:18  
N

Time Knots	Mon 1pm	Mon 2pm	Mon 3pm	Mon 4pm	Mon 5pm	Mon 6pm	Mon 7pm	Mon 8pm	Mon 9pm	Mon 10pm	Mon 11pm	Tue 12am	Tue 1am	Tue 2am	Tue 3am	Tue 4am	Tue 5am	Tue 6am	Tue 7am	Tue 8am	Tue 9am	Tue 10am	Tue 11am	Tue 12pm	Tue 1pm	Tue 2pm	Tue 3pm	Tue 4pm	Tue 5pm	Tue 6pm	Tue 7pm	Tue 8pm	Tue 9pm	Tue 10pm	Tue 11pm	Wed 12am
610 Bridge	6 9 NNE	6 10 N	7 10 N	7 10 NNE	7 11 NNE	8 11 NNE	8 11 NNE	7 10 NE	6 9 NE	5 8 ENE	5 7 NE	4 6 NE	4 7 NE	4 7 NNE	4 6 NNE	4 6 NNE	4 6 NNE	4 7 NNE	5 8 NNE	6 9 NNE	8 11 NNE	8 13 NNE	9 13 NNE	9 13 NNE	9 14 NNE	9 13 NNE	9 14 NNE	9 13 NNE	9 14 NNE	10 14 NNE	10 14 NNE	8 12 NNE	7 10 NNE	6 9 NNE	6 9 NNE	5 8 NNE
Kinder 1	6 9 NNE	6 9 N	7 10 N	7 10 NNE	8 11 NNE	8 11 NNE	7 10 NE	6 9 NE	5 8 ENE	5 7 NE	4 6 NE	4 7 NE	4 6 NNE	4 6 NNE	4 6 NNE	4 6 NNE	4 7 NNE	5 8 NNE	6 9 NNE	8 11 NNE	8 12 NNE	9 13 NNE	9 13 NNE	9 13 NNE	9 13 NNE	9 13 NNE	9 14 NNE	9 14 NNE	10 14 NNE	10 14 NNE	8 12 NNE	7 10 NNE	6 9 NNE	6 9 NNE	5 8 NNE	
Greens Bayou	6 8 NNE	6 9 N	7 10 N	7 10 NNE	8 11 NNE	8 11 NNE	7 10 NE	6 9 NE	5 8 ENE	5 7 NE	4 6 NE	4 7 NE	4 6 NNE	4 6 NNE	4 6 NNE	4 6 NNE	4 5 NNE	4 5 NNE	5 8 NNE	6 9 NNE	8 11 NNE	8 12 NNE	9 12 NNE	9 13 NNE	9 13 NNE	9 13 NNE	9 13 NNE	9 14 NNE	10 14 NNE	10 13 NNE	8 11 NNE	7 10 NNE	6 9 NNE	6 9 NNE	5 8 NNE	
Shell Crude	6 8 NNE	6 9 NNE	7 10 NNE	7 11 NNE	8 11 NNE	8 11 NNE	7 10 NE	6 9 NE	5 8 ENE	5 7 NE	4 6 NE	4 7 NE	4 6 NNE	4 6 NNE	4 6 NNE	4 6 NNE	4 5 NNE	4 5 NNE	5 8 NNE	6 9 NNE	8 11 NNE	8 12 NNE	9 12 NNE	9 13 NNE	9 13 NNE	9 13 NNE	9 14 NNE	10 14 NNE	10 13 NNE	8 11 NNE	7 10 NNE	6 9 NNE	6 9 NNE	5 8 NNE		
Lynchburg Ferries	6 8 N	6 9 ENE	7 10 NE	7 11 NNE	8 11 NNE	8 11 NNE	7 10 NE	6 9 NE	5 8 ENE	5 7 NE	4 6 NE	4 7 NE	4 6 NNE	4 6 NNE	4 6 NNE	4 6 NNE	4 5 NNE	4 5 NNE	5 8 NNE	6 9 NNE	8 11 NNE	8 12 NNE	9 12 NNE	9 13 NNE	9 13 NNE	9 13 NNE	9 14 NNE	10 14 NNE	10 13 NNE	8 11 NNE	7 10 NNE	6 9 NNE	6 9 NNE	5 8 NNE		
Exxon 3	6 8 NNE	6 9 NNE	7 10 NNE	7 11 NNE	8 11 NNE	8 11 NNE	7 10 NE	6 9 NE	5 8 ENE	5 7 NE	4 6 NE	4 7 NE	4 6 NNE	4 6 NNE	4 6 NNE	4 6 NNE	4 5 NNE	4 5 NNE	5 8 NNE	6 9 NNE	8 11 NNE	8 12 NNE	9 12 NNE	9 13 NNE	9 13 NNE	9 13 NNE	9 14 NNE	10 14 NNE	10 13 NNE	8 11 NNE	7 10 NNE	6 9 NNE	6 9 NNE	5 8 NNE		
Morgans Point	6 9 NNE	6 9 NNE	7 10 NNE	7 11 NNE	8 11 NNE	8 11 NNE	7 10 NE	6 9 NE	5 8 ENE	5 7 NE	4 6 NE	4 7 NE	4 6 NNE	4 6 NNE	4 6 NNE	4 6 NNE	4 5 NNE	4 5 NNE	5 8 NNE	6 9 NNE	8 11 NNE	8 12 NNE	9 12 NNE	9 13 NNE	9 13 NNE	9 13 NNE	9 14 NNE	10 14 NNE	10 13 NNE	8 11 NNE	7 10 NNE	6 9 NNE	6 9 NNE	5 8 NNE		
75/76	6 9 ENE	6 9 ENE	6 10 E	6 11 ENE	7 11 ENE	8 12 ENE	8 11 ENE	7 10 E	6 9 ENE	5 8 ENE	5 7 ENE	4 6 NE	4 7 NE	4 6 NNE	4 6 NNE	4 6 NNE	4 5 NNE	4 5 NNE	5 8 NNE	6 9 NNE	8 11 NNE	8 12 NNE	9 13 NNE	9 13 NNE	9 13 NNE	9 14 NNE	10 15 NNE	10 16 NNE	11 15 NNE	11 15 NNE	11 13 NNE	12 12 NNE	11 11 NNE	11 11 NNE	11 12 NNE	
63/64	6 9 ENE	6 9 ENE	6 9 E	6 10 E	7 11 E	8 12 E	8 11 E	7 10 E	6 9 ENE	5 8 ENE	5 7 ENE	4 6 NE	4 7 NE	4 6 NNE	4 6 NNE	4 6 NNE	4 5 NNE	4 5 NNE	5 8 NNE	6 9 NNE	8 11 NNE	8 12 NNE	9 13 NNE	9 13 NNE	9 13 NNE	9 14 NNE	10 15 NNE	10 16 NNE	11 15 NNE	11 15 NNE	11 13 NNE	12 12 NNE	11 11 NNE	11 11 NNE	11 12 NNE	
51/52	5 8 NNE	5 8 NNE	5 8 ENE	5 9 E	6 9 E	7 10 E	7 11 E	6 10 E	5 8 ENE	5 7 ENE	4 6 NE	4 7 NE	4 6 NNE	4 6 NNE	4 6 NNE	4 5 NNE	4 5 NNE	5 8 NNE	6 9 NNE	8 11 NNE	8 12 NNE	9 13 NNE	9 13 NNE	9 13 NNE	9 13 NNE	9 14 NNE	10 15 NNE	10 16 NNE	11 15 NNE	11 15 NNE	11 13 NNE	12 12 NNE	11 11 NNE	11 11 NNE	11 12 NNE	
37/38	6 8 NNE	5 7 NNE	5 7 ENE	5 8 E	6 9 E	6 8 E	6 8 E	5 7 ENE	4 6 ENE	4 5 ENE	3 5 NE	3 4 NE	3 4 NNE	3 4 NNE	3 4 NNE	3 3 NNE	3 3 NNE	4 5 NNE	5 6 NNE	7 8 NNE	7 9 NNE	8 10 NNE	8 10 NNE	8 10 NNE	8 10 NNE	8 10 NNE	8 10 NNE	8 10 NNE	8 10 NNE	8 10 NNE	8 10 NNE	8 10 NNE	8 10 NNE	8 10 NNE	8 10 NNE	
25/26	7 8 NNE	7 8 NNE	7 8 ENE	7 8 ESE	7 8 ESE	7 8 ESE	7 8 E	6 7 ENE	5 6 ENE	4 5 NE	3 4 NE	3 4 NNE	3 4 NNE	3 4 NNE	3 3 NNE	3 3 NNE	4 5 NNE	5 6 NNE	7 8 NNE	7 9 NNE	8 10 NNE	8 10 NNE	8 10 NNE	8 10 NNE	8 10 NNE	8 10 NNE	8 10 NNE	8 10 NNE	8 10 NNE	8 10 NNE	8 10 NNE	8 10 NNE	8 10 NNE	8 10 NNE	8 10 NNE	
11/12	7 8 NNE	6 7 NNE	5 6 ENE	5 6 ESE	6 7 ESE	6 7 ESE	6 7 E	5 6 ENE	4 5 ENE	3 4 NE	3 4 NNE	3 4 NNE	3 4 NNE	3 4 NNE	3 3 NNE	3 3 NNE	4 5 NNE	5 6 NNE	7 8 NNE	7 9 NNE	8 10 NNE	8 10 NNE	8 10 NNE	8 10 NNE	8 10 NNE	8 10 NNE	8 10 NNE	8 10 NNE	8 10 NNE	8 10 NNE	8 10 NNE	8 10 NNE	8 10 NNE	8 10 NNE	8 10 NNE	
1 & 2 Bravo	6 8 NE	5 7 E	5 7 ESE	6 8 ESE	6 8 ESE	7 8 ESE	7 8 E	6 7 ENE	5 6 ENE	4 5 NE	3 4 NE	3 4 NNE	3 4 NNE	3 4 NNE	3 4 NNE	3 3 NNE	3 3 NNE	4 5 NNE	5 6 NNE	7 8 NNE	7 9 NNE	8 10 NNE	8 10 NNE	8 10 NNE	8 10 NNE	8 10 NNE	8 10 NNE	8 10 NNE	8 10 NNE	8 10 NNE	8 10 NNE	8 10 NNE	8 10 NNE	8 10 NNE	8 10 NNE	8 10 NNE

**NOTE: This is automated data that may/may not agree with the official BAM thinking that's found on the daily slides. This data should be used as a guide only**

# Houston Pilots: Mon. 8/28/2023



## Forecast Discussion

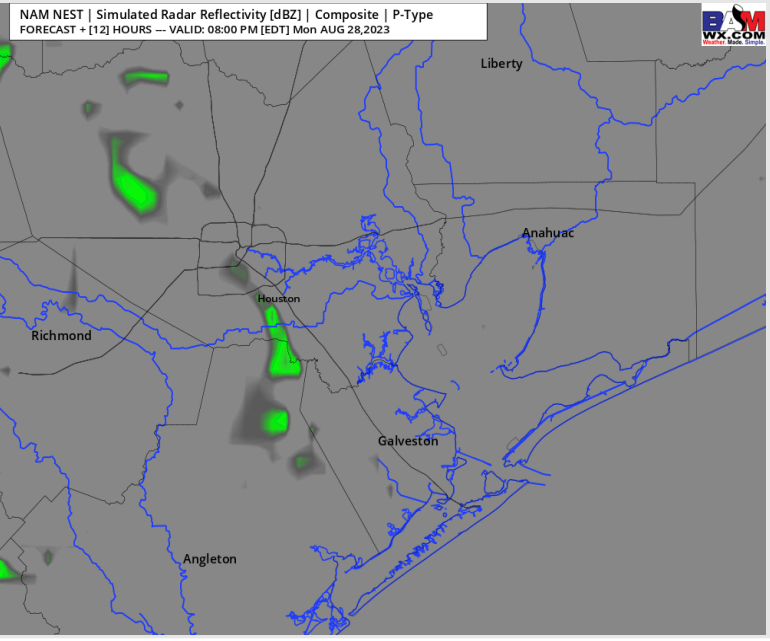
**Precip:** Favoring a 20% chance for isolated showers / few storms to begin around 3PM-CT, with chances continuing through 9 PM.

**Wind:** Winds will be variable in direction throughout the day. **N of Morgan's Point:** Winds will slightly increase to 4-9 kts between 5-7 PM, then return to 3-7kts. **S of Morgan's Point:** 10-15 kts from 3-7 PM, before winds become weaker and decrease to 4-9kts for the remainder of the evening. **Wind gusts of 25-30 kts will be possible under the strongest cells today.**

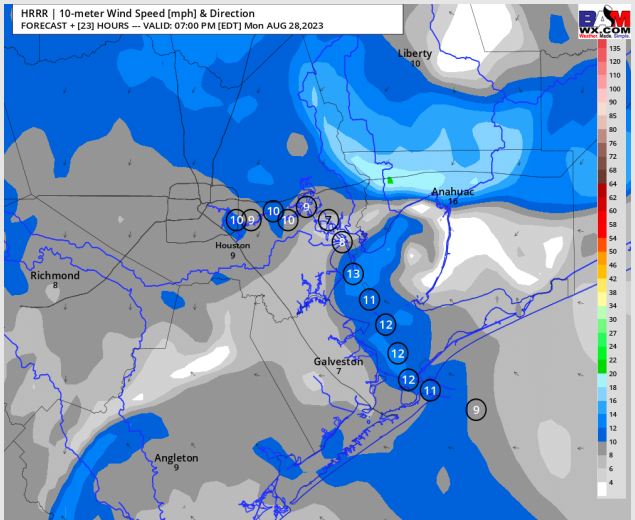
**High Temps:** **S of Morgan's Point:** Low/Mid 90s F. **N of Morgan's Point:** Upper 90s F/Low 100s F.

**Visibility:** No Visibility concerns at this time.

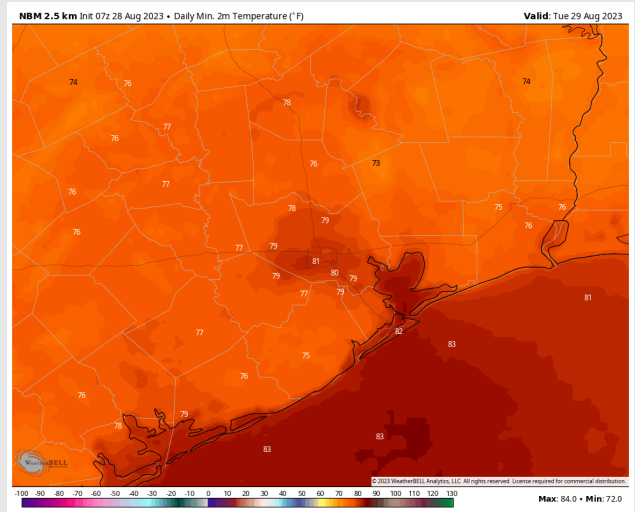
## Precip Image: 7 PM CT



**Wind Speed:  
6 PM CT**



**Low Temps  
Tuesday AM**



# Houston Pilots: Tues. 8/29/2023



## Forecast Discussion

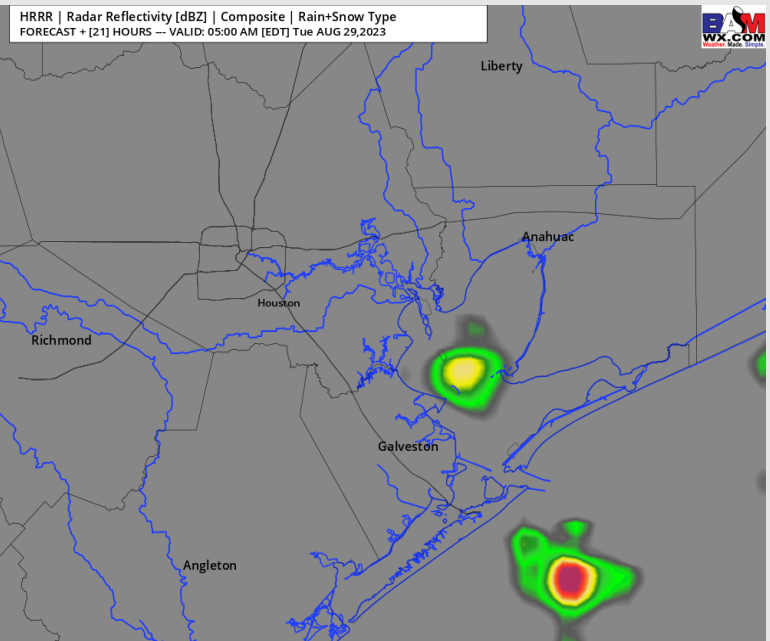
**Precip:** Favoring hit/miss showers 3-7 AM, then after 7 AM the Boarding Station will see continued isolated shower risks through 8 AM. Favoring dry conditions to move into the area after 8 AM. From 3PM-7PM, a low end risk of a pop up shower will exist for all stations (chances of 10%).

**Wind:** Winds will be out of the ENE through 4 PM, then winds will shift out of the ESE for the remainder of the evening. **N of Morgan's Point:** 2-7 kts through 9 AM, increasing to 8-13 kts through 7 PM. Winds will decrease to 1-6 kts after 7 PM and remain at that clip for the rest of the evening. **S of Morgan's Point:** 8-13 kts through 5 PM, briefly increasing to 10-15 kts through 9 PM before decreasing to 2-7 kts for the remainder of the day.

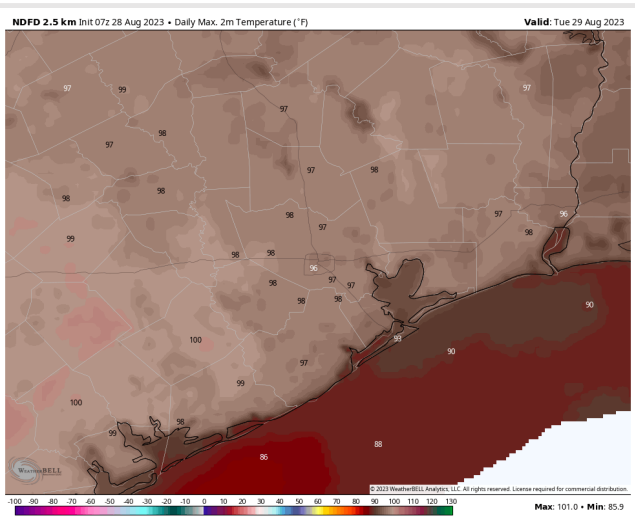
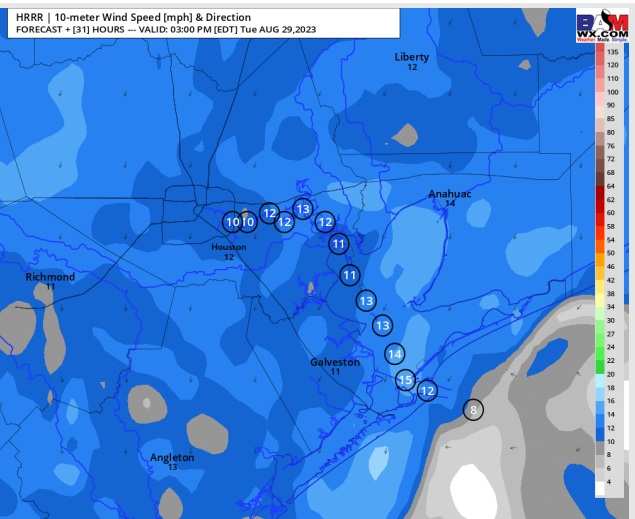
**High Temps:** **S of Morgan's Point:** Low/Mid 90s F. **N of Morgan's Point:** Upper 90s F.

**Visibility:** Not anticipating any fog issues at this time.

## Precip Image: 4 AM CT



Wind Speed:  
2 PM CT



High Temps  
Tuesday

## Forecast Discussion

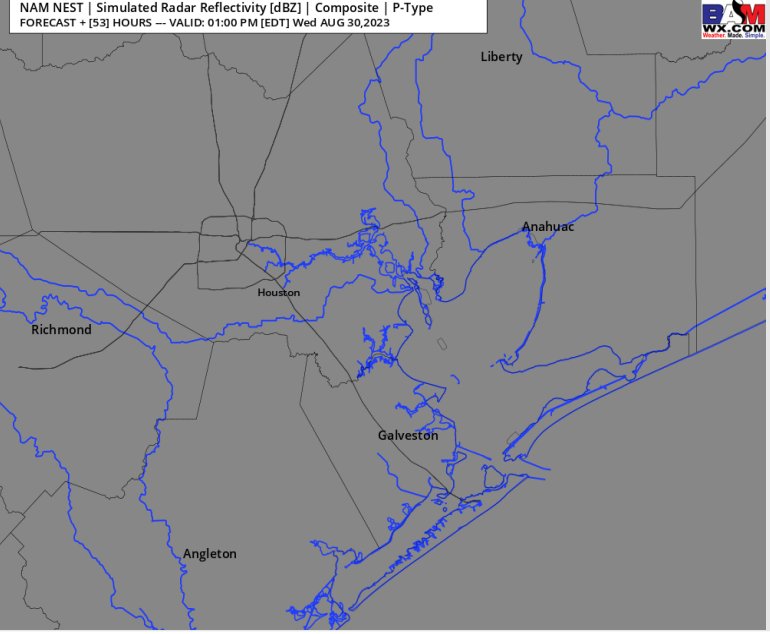
**Precip:** Favoring dry conditions throughout the day Wednesday for now.

**Wind:** Winds will start the day out of the ESE before shifting to out of the NE by 4 AM. Winds will then become variable after 3 PM, settling out of the SSW by 8 PM. **N of Morgan's Point:** 1-6 kts through 11 AM, increasing to 4-9 kts through 8 PM. After 8 PM, winds will decrease back to 1-6 kts for the rest of the day. **S of Morgan's Point:** 10-15 kts through 1 PM, briefly decreasing to 3-8 kts through 5 PM before increasing to 5-10 kts for the remainder of the evening.

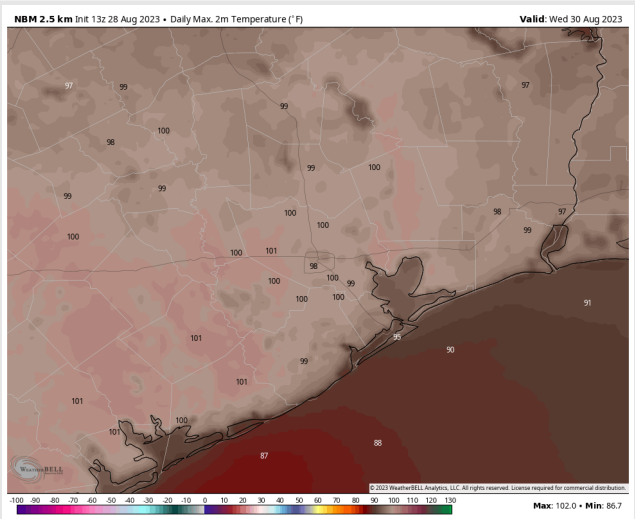
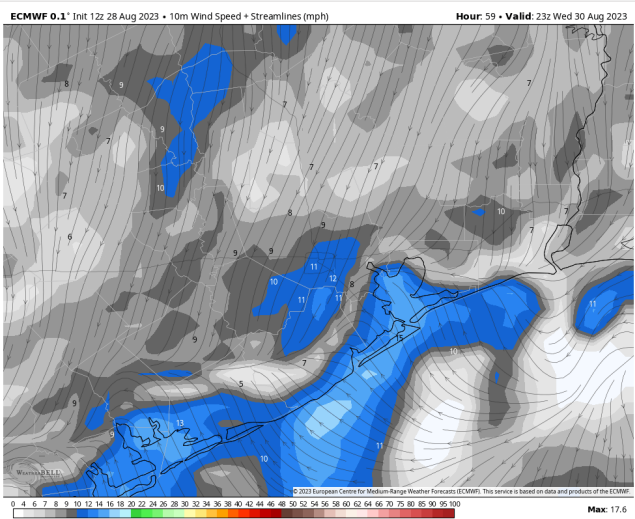
**High Temps:** **S of Morgan's Point:** Low/mid 90s F. **N of Morgan's Point:** Upper 90s F.

**Visibility:** No visibility issues expected Wednesday.

## Precip Image: 12 PM CT

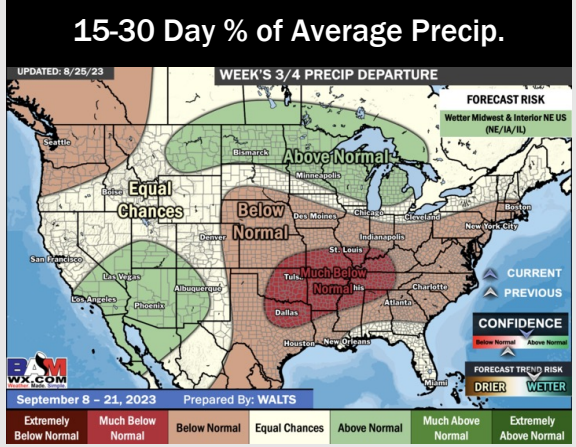
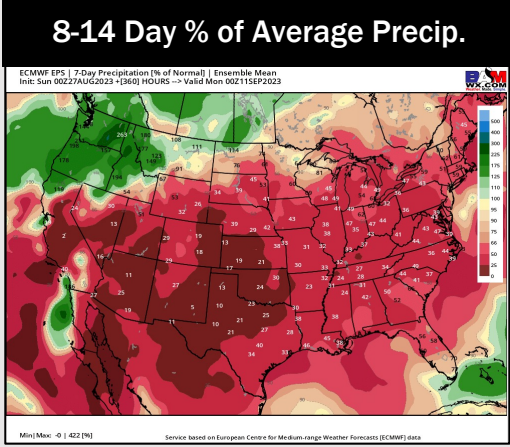
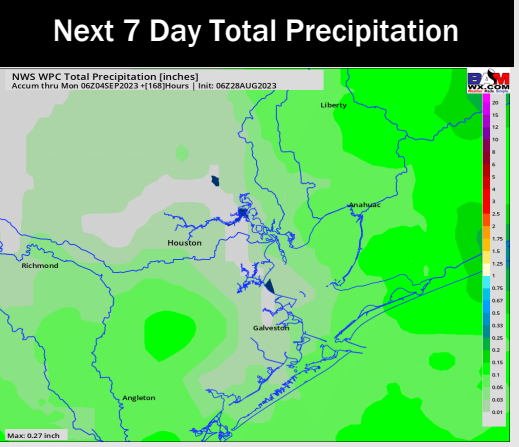
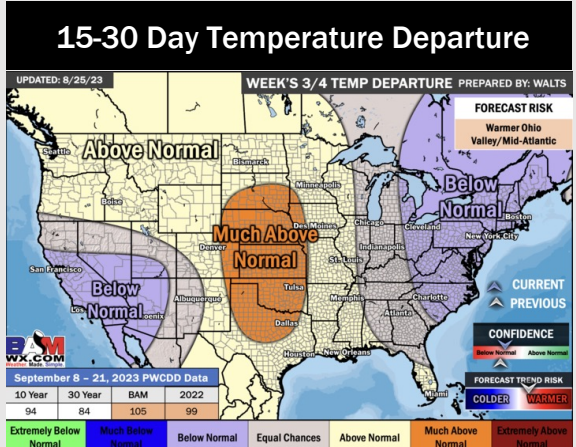
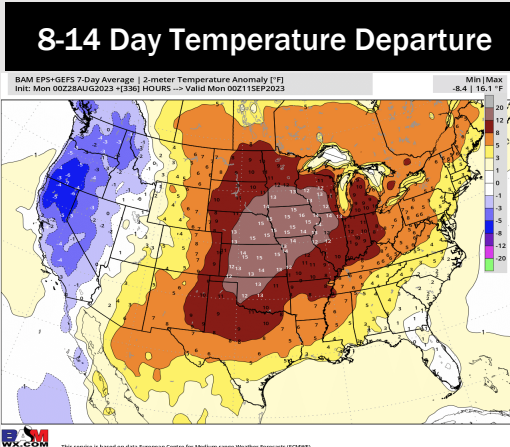
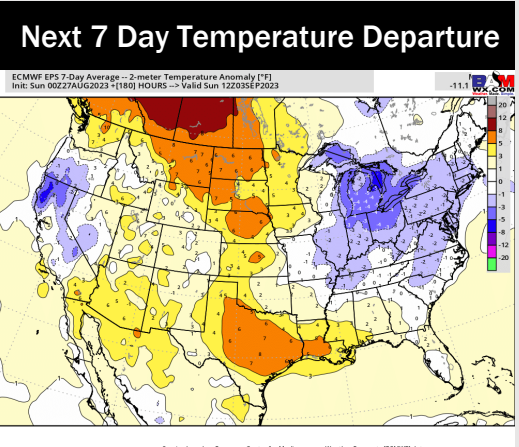


Wind Speed:  
4 PM CT



High Temps  
Wednesday

# Houston Pilots: 8/28/23



- Minor rain chances are expected Today - Tuesday. Expect temperatures to continue to remain above normal.
- Expecting much below normal precipitation chances and above normal temperatures for the week 2 timeframe.
- Above normal temperatures and below normal chances for precipitation are favored in the weeks 3/4 timeframe.