

Houston Pilots Forecast Package



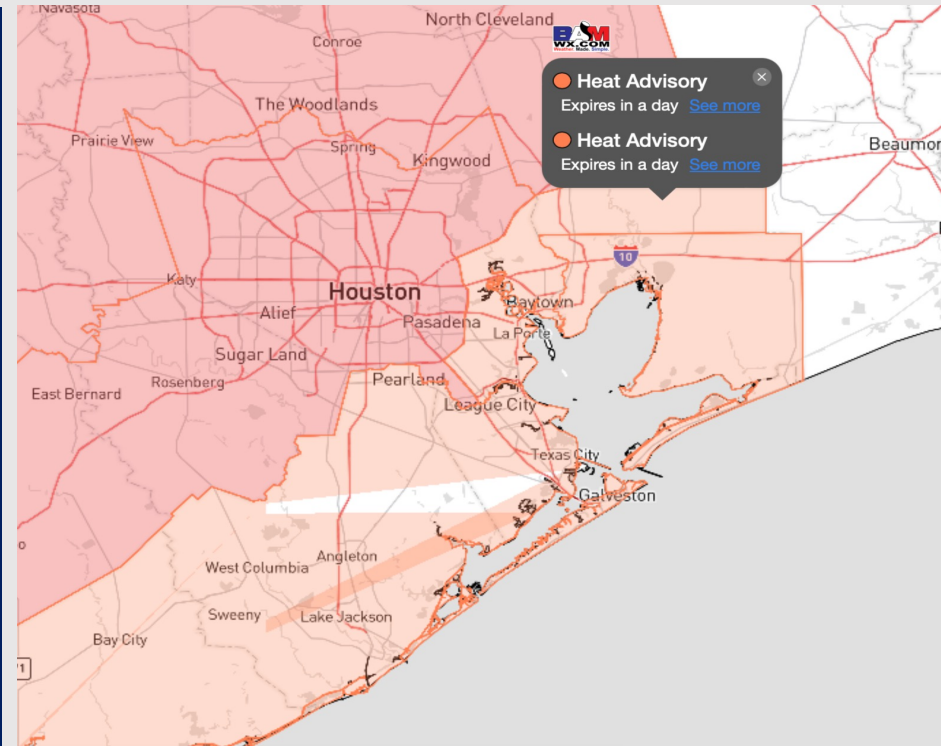
Updated: 12:40 PM CT

Saturday, August 26, 2023

Forecaster: Tyler Riggles

Weather Headlines

- No tropical threats anticipated over the next 3 days. **Monitoring development in the eastern Gulf of Mexico for mid next week, however not favoring any impacts for HOU.**
- Isolated afternoon showers /storms will be possible today for Stations N of Morgan's Point, followed by hit/miss showers/storms Sunday and Monday afternoon.
- Feels like temperatures of 105-110 F will be possible during the afternoon hours across this weekend.
- Not anticipating any visibility concerns over the next 72 hours.



Radar/NWS Alerts: 12:40 PM CT



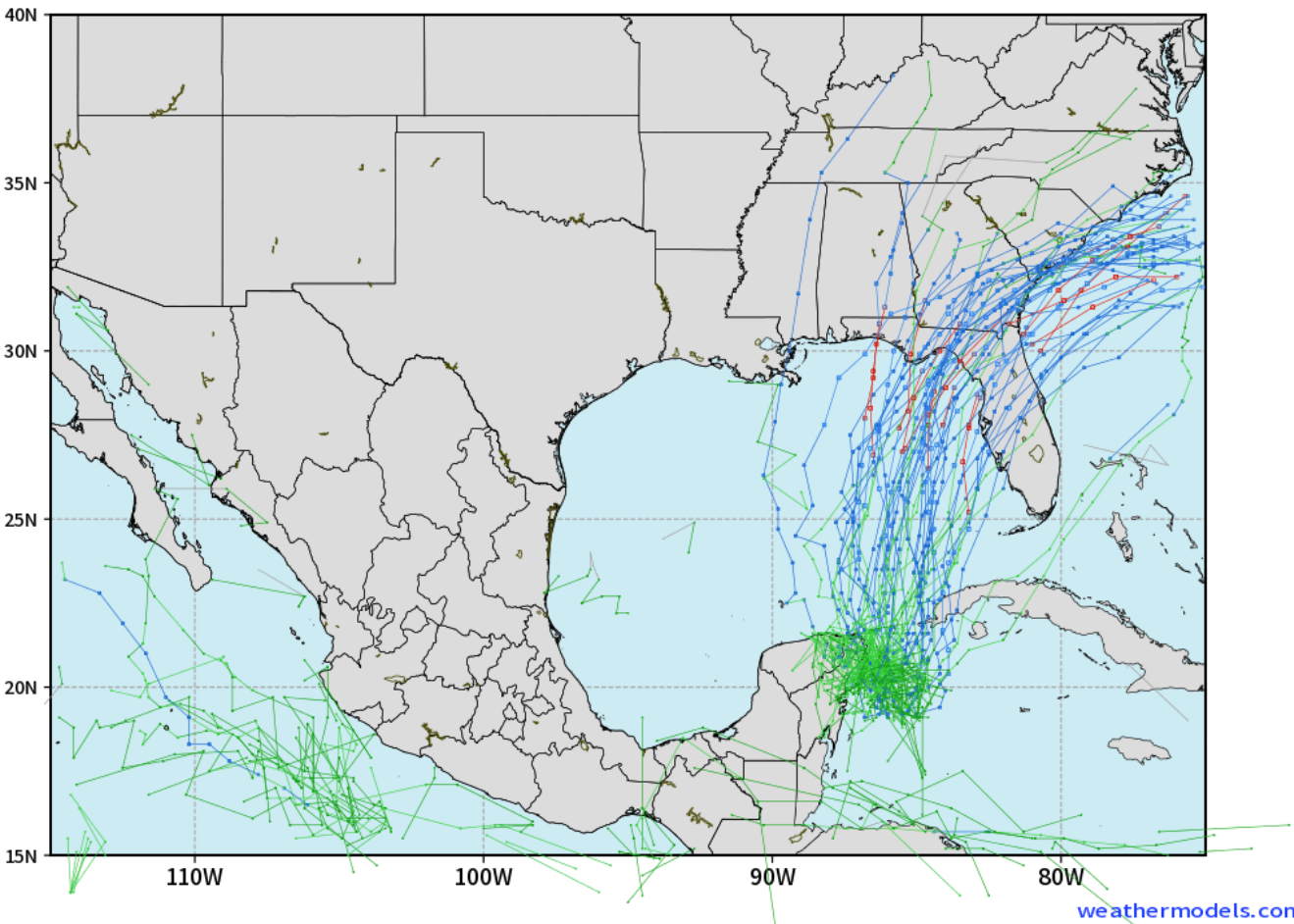
As always, please do not hesitate to reach out to us with any forecast questions via the chat option on the Weather Porthole or our on-call number, **(317)-560-8122** press 1 for forecast questions.

Houston Pilots Tropical Update

Potential Tropical System Tracks Next 10 Days

ECMWF GULF EPS Cyclone Locations --> Next [10-days]
INIT: 00Z26AUG2023 --> UNTIL 00Z05SEP2023

o-o ENSEMBLE MEAN
o-o 1000 - 1010 hPa
o-o 980 - 999 hPa
o-o 960 - 979 hPa
o-o 950 - 959 hPa
o-o < 950 hPa



We are monitoring the potential for development of a low-pressure system in the southern Caribbean towards Tuesday of next week, however favoring it to stay in the eastern Gulf.

Houston Pilots Visibility Chart (miles)



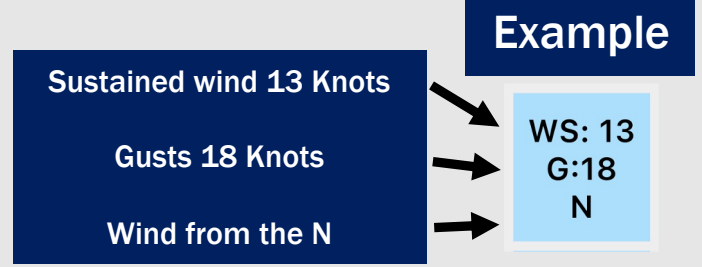
Forecast Confidence



| Time | Sat 11am | Sat 12pm | Sat 1pm | Sat 2pm | Sat 3pm | Sat 4pm | Sat 5pm | Sat 6pm | Sat 7pm | Sat 8pm | Sat 9pm | Sat 10pm | Sat 11pm | Sun 12am | Sun 1am | Sun 2am | Sun 3am | Sun 4am | Sun 5am | Sun 6am | Sun 7am | Sun 8am | Sun 9am | Sun 10am | Sun 11am | Sun 12pm | Sun 1pm | Sun 2pm | Sun 3pm | Sun 4pm | Sun 5pm | Sun 6pm | Sun 7pm | Sun 8pm | Sun 9pm | Sun 10pm | | |
|-------------------|----------|----------|---------|---------|---------|---------|---------|---------|---------|---------|---------|----------|----------|----------|---------|---------|---------|---------|---------|---------|---------|---------|---------|----------|----------|----------|---------|---------|---------|---------|---------|---------|---------|---------|---------|----------|----|----|
| 610 Bridge | 10 | 10 | 10 | 10 | 10 | 10 | 10 | 10 | 10 | 10 | 10 | 10 | 10 | 10 | 10 | 10 | 10 | 10 | 10 | 10 | 10 | 6 | 6 | 10 | 10 | 10 | 10 | 10 | 10 | 10 | 10 | 10 | 10 | 10 | 10 | 10 | 10 | |
| Kinder 1 | 10 | 10 | 10 | 10 | 10 | 10 | 10 | 10 | 10 | 10 | 10 | 10 | 10 | 10 | 10 | 10 | 10 | 10 | 10 | 10 | 10 | 7 | 8 | 10 | 10 | 10 | 10 | 10 | 10 | 10 | 10 | 10 | 10 | 10 | 10 | 10 | 10 | |
| Greens Bayou | 10 | 10 | 10 | 10 | 10 | 10 | 10 | 10 | 10 | 10 | 10 | 10 | 10 | 10 | 10 | 10 | 10 | 10 | 10 | 10 | 10 | 8 | 9 | 10 | 10 | 10 | 10 | 10 | 10 | 10 | 10 | 10 | 10 | 10 | 10 | 10 | 10 | |
| Shell Crude | 10 | 10 | 10 | 10 | 10 | 10 | 10 | 10 | 10 | 10 | 10 | 10 | 10 | 10 | 10 | 10 | 10 | 10 | 10 | 10 | 10 | 9 | 10 | 10 | 10 | 10 | 10 | 10 | 10 | 10 | 10 | 10 | 10 | 10 | 10 | 10 | 10 | |
| Lynchburg Ferries | 10 | 10 | 10 | 10 | 10 | 10 | 10 | 10 | 10 | 10 | 10 | 10 | 10 | 10 | 10 | 10 | 10 | 10 | 10 | 10 | 10 | 10 | 10 | 10 | 10 | 10 | 10 | 10 | 10 | 10 | 10 | 10 | 10 | 10 | 10 | 10 | 10 | |
| Exxon 3 | 10 | 10 | 10 | 10 | 10 | 10 | 10 | 10 | 10 | 10 | 10 | 10 | 10 | 10 | 10 | 10 | 10 | 10 | 10 | 10 | 10 | 10 | 10 | 10 | 10 | 10 | 10 | 10 | 10 | 10 | 10 | 10 | 10 | 10 | 10 | 10 | 10 | |
| Morgans Point | 10 | 10 | 10 | 10 | 10 | 10 | 10 | 10 | 10 | 10 | 10 | 10 | 10 | 10 | 10 | 10 | 10 | 10 | 10 | 10 | 10 | 10 | 10 | 10 | 10 | 10 | 10 | 10 | 10 | 10 | 10 | 10 | 10 | 10 | 10 | 10 | 10 | 10 |
| 75/76 | 10 | 10 | 10 | 10 | 10 | 10 | 10 | 10 | 10 | 10 | 10 | 10 | 10 | 10 | 10 | 10 | 10 | 10 | 10 | 10 | 10 | 10 | 10 | 10 | 10 | 10 | 10 | 10 | 10 | 10 | 10 | 10 | 10 | 10 | 10 | 10 | 10 | 10 |
| 63/64 | 10 | 10 | 10 | 10 | 10 | 10 | 10 | 10 | 10 | 10 | 10 | 10 | 10 | 10 | 10 | 10 | 10 | 10 | 10 | 10 | 10 | 10 | 10 | 10 | 10 | 10 | 10 | 10 | 10 | 10 | 10 | 10 | 10 | 10 | 10 | 10 | 10 | 10 |
| 51/52 | 10 | 10 | 10 | 10 | 10 | 10 | 10 | 10 | 10 | 10 | 10 | 10 | 10 | 10 | 10 | 10 | 10 | 10 | 10 | 10 | 10 | 10 | 10 | 10 | 10 | 10 | 10 | 10 | 10 | 10 | 10 | 10 | 10 | 10 | 10 | 10 | 10 | 10 |
| 37/38 | 10 | 10 | 10 | 10 | 10 | 10 | 10 | 10 | 10 | 10 | 10 | 10 | 10 | 10 | 10 | 10 | 10 | 10 | 10 | 10 | 10 | 10 | 10 | 10 | 10 | 10 | 10 | 10 | 10 | 10 | 10 | 10 | 10 | 10 | 10 | 10 | 10 | 10 |
| 25/26 | 10 | 10 | 10 | 10 | 10 | 10 | 10 | 10 | 10 | 10 | 10 | 10 | 10 | 10 | 10 | 10 | 10 | 10 | 10 | 10 | 10 | 8 | 10 | 10 | 10 | 10 | 10 | 10 | 10 | 10 | 10 | 10 | 10 | 10 | 10 | 10 | 10 | 10 |
| 11/12 | 10 | 10 | 10 | 10 | 10 | 10 | 10 | 10 | 10 | 10 | 10 | 10 | 10 | 10 | 10 | 10 | 10 | 10 | 10 | 10 | 10 | 10 | 10 | 10 | 10 | 10 | 10 | 10 | 10 | 10 | 10 | 10 | 10 | 10 | 10 | 10 | 10 | 10 |
| 1 & 2 Bravo | 10 | 10 | 10 | 10 | 10 | 10 | 10 | 10 | 10 | 10 | 10 | 10 | 10 | 10 | 10 | 10 | 10 | 10 | 10 | 10 | 10 | 10 | 10 | 10 | 10 | 10 | 10 | 10 | 10 | 10 | 10 | 10 | 10 | 10 | 10 | 10 | 10 | 10 |

NOTE: This is automated data that may/may not agree with the official BAM thinking that's found on the daily slides or special visibility report slides. This data should be used as a guide only

Houston Pilots Wind Chart



| Time Knots | Sat 11am | Sat 12pm | Sat 1pm | Sat 2pm | Sat 3pm | Sat 4pm | Sat 5pm | Sat 6pm | Sat 7pm | Sat 8pm | Sat 9pm | Sat 10pm | Sat 11pm | Sun 12am | Sun 1am | Sun 2am | Sun 3am | Sun 4am | Sun 5am | Sun 6am | Sun 7am | Sun 8am | Sun 9am | Sun 10am | Sun 11am | Sun 12pm | Sun 1pm | Sun 2pm | Sun 3pm | Sun 4pm | Sun 5pm | Sun 6pm | Sun 7pm | Sun 8pm | Sun 9pm | Sun 10pm | | | | | | |
|-------------------|----------|----------|---------|---------|---------|---------|---------|---------|---------|---------|---------|----------|----------|----------|---------|---------|---------|---------|---------|---------|---------|---------|---------|----------|----------|----------|---------|---------|---------|---------|---------|---------|---------|---------|---------|----------|-----|-----|-----|-----|---|---|
| 610 Bridge | 2 | 3 | 4 | 5 | 6 | 6 | 7 | 8 | 9 | 8 | 7 | 7 | 6 | 5 | 5 | 4 | 5 | 5 | 5 | 5 | 5 | 6 | 6 | 7 | 6 | 5 | 4 | 5 | 5 | 6 | 6 | 7 | 6 | 5 | 5 | 6 | 7 | 6 | 5 | 5 | | |
| | WNW | E | E | ESE | SE | SE | SSE | SSE | S | S | SSW | SSW | SW | SW | WSW | WSW | WSW | W | W | W | W | W | W | W | WNW | WNW | WNW | WNW | WNW | WNW | W | WSW | SW | SE | SE | ESE | WNW | WNW | | | | |
| Kinder 1 | 2 | 3 | 4 | 5 | 6 | 6 | 7 | 8 | 9 | 8 | 7 | 7 | 6 | 5 | 5 | 5 | 5 | 5 | 5 | 5 | 5 | 6 | 6 | 7 | 6 | 5 | 4 | 4 | 5 | 5 | 6 | 6 | 7 | 6 | 5 | 5 | 6 | 6 | 7 | 6 | 5 | 5 |
| | W | E | ESE | ESE | SE | SE | SSE | SSE | S | S | SSW | SSW | SW | SW | WSW | WSW | WSW | W | W | W | W | W | W | W | WNW | WNW | WNW | WNW | WNW | W | WSW | SW | SE | S | S | WNW | WNW | WNW | WNW | WNW | | |
| Greens Bayou | 2 | 3 | 4 | 5 | 6 | 7 | 8 | 9 | 9 | 8 | 7 | 7 | 6 | 5 | 5 | 5 | 5 | 4 | 4 | 4 | 5 | 5 | 6 | 6 | 7 | 6 | 5 | 4 | 4 | 5 | 6 | 6 | 6 | 6 | 6 | 6 | 6 | 6 | 5 | 5 | | |
| | W | ESE | ESE | SE | SE | SE | SSE | SSE | S | S | SSW | SSW | SW | SW | WSW | WSW | WSW | W | W | W | W | W | W | W | WNW | WNW | WNW | WNW | W | WSW | WSW | SW | SE | WSW | SSE | W | WSW | SSE | W | WSW | | |
| Shell Crude | 2 | 3 | 4 | 5 | 6 | 7 | 8 | 9 | 9 | 8 | 7 | 7 | 6 | 5 | 5 | 5 | 5 | 5 | 4 | 4 | 5 | 5 | 6 | 6 | 7 | 6 | 5 | 5 | 5 | 6 | 6 | 7 | 8 | 6 | 7 | 8 | 6 | 5 | 5 | | | |
| | WNW | ESE | ESE | SE | SE | SE | SSE | SSE | S | S | SSW | SSW | SW | SW | WSW | WSW | WSW | W | W | W | W | W | W | W | WNW | WNW | WNW | WNW | W | WSW | SW | SW | SSE | SSW | SE | SSW | S | W | WSW | S | W | |
| Lynchburg Ferries | 2 | 3 | 4 | 5 | 6 | 8 | 9 | 10 | 10 | 8 | 8 | 7 | 7 | 6 | 6 | 6 | 5 | 5 | 5 | 5 | 5 | 6 | 6 | 7 | 6 | 5 | 5 | 5 | 6 | 6 | 7 | 7 | 8 | 6 | 7 | 8 | 6 | 5 | 5 | | | |
| | W | SSE | SE | SE | SSE | SSE | SSE | SSE | S | S | SSW | SSW | SW | SW | WSW | WSW | W | W | W | W | W | W | W | WNW | WNW | WNW | WNW | WNW | W | WSW | SW | SSW | SE | WSW | E | W | WSW | E | W | | | |
| Exxon 3 | 3 | 3 | 4 | 6 | 7 | 8 | 10 | 10 | 10 | 9 | 9 | 8 | 7 | 7 | 6 | 6 | 6 | 6 | 6 | 6 | 6 | 6 | 6 | 7 | 7 | 7 | 6 | 5 | 6 | 6 | 7 | 7 | 8 | 8 | 6 | 6 | 6 | 6 | 6 | | | |
| | W | SSE | SSE | SSE | SSE | SSE | SSE | SSE | S | S | SSW | SSW | SW | SW | WSW | WSW | W | W | W | W | W | W | W | WNW | WNW | WNW | WNW | WNW | W | WSW | SSW | S | SSE | SSE | SSE | W | WSW | SSE | W | WSW | | |
| Morgans Point | 3 | 4 | 5 | 6 | 8 | 9 | 11 | 12 | 11 | 10 | 10 | 9 | 8 | 8 | 8 | 8 | 8 | 7 | 7 | 7 | 7 | 7 | 7 | 8 | 7 | 7 | 6 | 6 | 6 | 6 | 7 | 7 | 8 | 9 | 9 | 7 | 7 | 7 | 7 | 7 | | |
| | SSW | SE | SSE | SSE | SSE | SSE | SSE | SSE | S | S | SSW | SSW | SW | SW | WSW | WSW | W | W | W | W | W | W | WNW | WNW | WNW | WNW | WNW | W | WSW | SSW | S | S | S | SSE | NW | NW | WSW | S | WSW | | | |
| 75/76 | 3 | 4 | 5 | 6 | 8 | 10 | 12 | 13 | 13 | 12 | 12 | 11 | 10 | 10 | 9 | 10 | 10 | 9 | 9 | 9 | 10 | 9 | 9 | 9 | 8 | 7 | 6 | 6 | 6 | 7 | 8 | 10 | 10 | 9 | 8 | 8 | 8 | 8 | 8 | | | |
| | SSE | ESE | SE | SSE | SSE | SSE | SSE | SSE | S | S | SSW | SSW | SW | SW | WSW | WSW | W | W | W | W | W | W | WNW | WNW | WNW | WNW | WNW | SW | SSE | SSE | S | S | SSE | SE | W | WSW | SSE | W | WSW | | | |
| 63/64 | 3 | 3 | 4 | 5 | 7 | 10 | 11 | 13 | 13 | 12 | 11 | 11 | 10 | 10 | 9 | 10 | 10 | 10 | 10 | 10 | 10 | 10 | 10 | 10 | 10 | 8 | 7 | 6 | 5 | 6 | 7 | 8 | 10 | 11 | 11 | 10 | 9 | 8 | 8 | | | |
| | S | E | SE | SE | SSE | SSE | SSE | SSE | S | S | SSW | SSW | SW | SW | WSW | WSW | W | W | W | W | W | W | WNW | WNW | WNW | WNW | WNW | W | SSE | SSE | SSE | S | S | SSW | SE | S | WSW | S | WSW | | | |
| 51/52 | 4 | 3 | 4 | 5 | 7 | 9 | 10 | 12 | 12 | 11 | 10 | 10 | 10 | 9 | 9 | 9 | 9 | 9 | 9 | 10 | 11 | 10 | 10 | 10 | 8 | 7 | 5 | 5 | 6 | 7 | 8 | 10 | 11 | 11 | 10 | 8 | 8 | 8 | | | | |
| | SW | ESE | SE | SE | SSE | SSE | SSE | S | S | S | SSW | SSW | SW | SW | WSW | WSW | W | W | W | W | W | W | WNW | WNW | WNW | WNW | WNW | W | SSE | SSE | S | S | SSW | S | S | SSW | S | S | SSW | | | |
| 37/38 | 4 | 4 | 4 | 4 | 6 | 8 | 9 | 10 | 11 | 10 | 9 | 9 | 9 | 9 | 9 | 9 | 9 | 9 | 9 | 9 | 9 | 9 | 9 | 9 | 9 | 7 | 6 | 5 | 5 | 6 | 8 | 10 | 11 | 11 | 10 | 8 | 8 | 8 | 8 | | | |
| | SSW | ESE | ESE | SE | SSE | SSE | SSE | S | S | S | SSW | SSW | SW | SW | WSW | WSW | W | W | W | W | W | W | WNW | WNW | WNW | WNW | WNW | W | SSE | S | S | SSW | SSW | SSW | SSW | SSW | SSW | SSW | SSW | | | |
| 25/26 | 4 | 4 | 4 | 4 | 6 | 7 | 8 | 8 | 9 | 8 | 8 | 7 | 8 | 8 | 8 | 8 | 8 | 8 | 8 | 8 | 8 | 8 | 8 | 8 | 8 | 7 | 6 | 5 | 5 | 7 | 8 | 9 | 10 | 10 | 9 | 8 | 7 | 7 | 7 | | | |
| | SSW | E | E | SE | SSE | SSE | S | S | S | S | SSW | SSW | SW | SW | WSW | WSW | W | W | W | W | W | W | WNW | WNW | WNW | WNW | WNW | W | SSE | SSE | SSE | S | S | SSW | SSW | SSW | SSW | SSW | SSW | | | |
| 11/12 | 4 | 4 | 4 | 4 | 6 | 7 | 8 | 8 | 8 | 8 | 8 | 8 | 8 | 8 | 8 | 8 | 8 | 8 | 8 | 8 | 8 | 8 | 8 | 8 | 8 | 7 | 6 | 6 | 6 | 7 | 8 | 9 | 10 | 10 | 10 | 8 | 8 | 8 | 8 | | | |
| | SSW | ENE | ESE | SE | SSE | SSE | S | S | S | S | SSW | SSW | SSW | SW | SW | WSW | WSW | W | W | W | W | W | WNW | WNW | WNW | WNW | WNW | W | SSE | SSE | SSE | SSE | SSE | SSE | SSW | SSW | SSW | SSW | SSW | | | |
| 1 & 2 Bravo | 3 | 2 | 3 | 3 | 5 | 6 | 8 | 8 | 9 | 9 | 9 | 9 | 9 | 10 | 10 | 10 | 10 | 10 | 10 | 10 | 10 | 10 | 10 | 10 | 9 | 7 | 5 | 6 | 7 | 9 | 10 | 11 | 12 | 12 | 10 | 10 | 10 | 10 | | | | |
| | N | NE | E | SE | SSE | SSE | S | S | S | S | S | SSW | SSW | SW | SW | WSW | WSW | W | W | W | W | W | WNW | WNW | WNW | WNW | WNW | W | SW | SSW | SSW | SSW | SSW | SSW | SSW | SSW | SSW | SSW | | | | |

NOTE: This is automated data that may/may not agree with the official BAM thinking that's found on the daily slides. This data should be used as a guide only

Houston Pilots: sat. 8/26/2023



Forecast Discussion

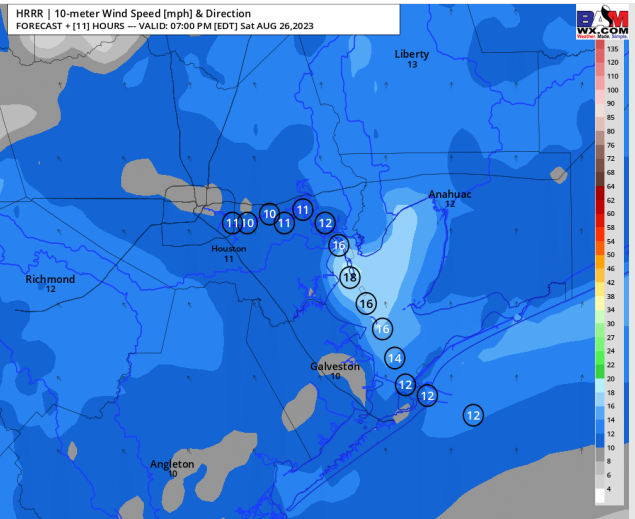
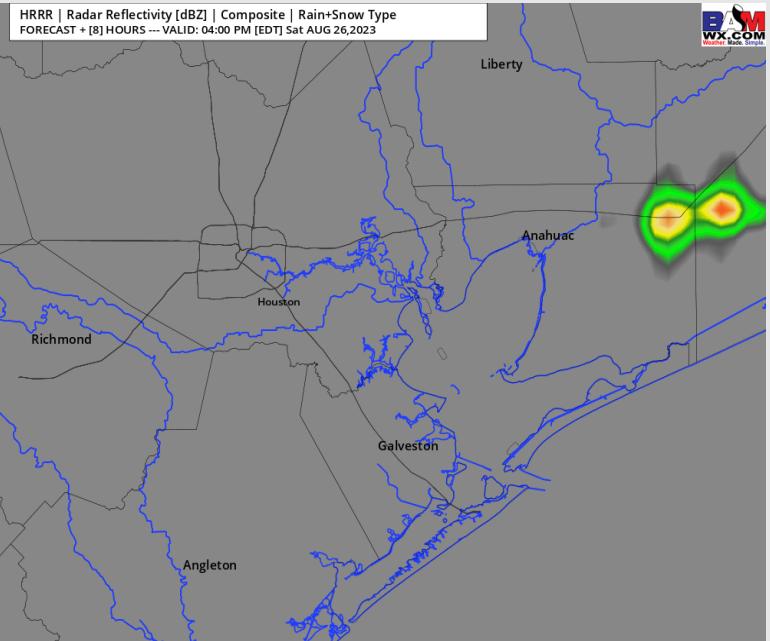
Precip: Favoring dry conditions for the majority of the day, with a brief 10% chance for isolated showers between 3-6 PM.

Wind: Winds will be out of the NNW through 2 PM, after which time all winds will shift back out of the SSE before gradually shifting to out of the SSW by 8 PM and remaining that way for the rest of the day. **N of Morgan's Point:** 1-6 kts through 3 PM. After 3 PM, winds will increase to 4-9 kts for the rest of the day. **S of Morgan's Point:** 1-6 kts through 3 PM. After 3 PM winds will increase to 10-15 kts for the rest of the day.

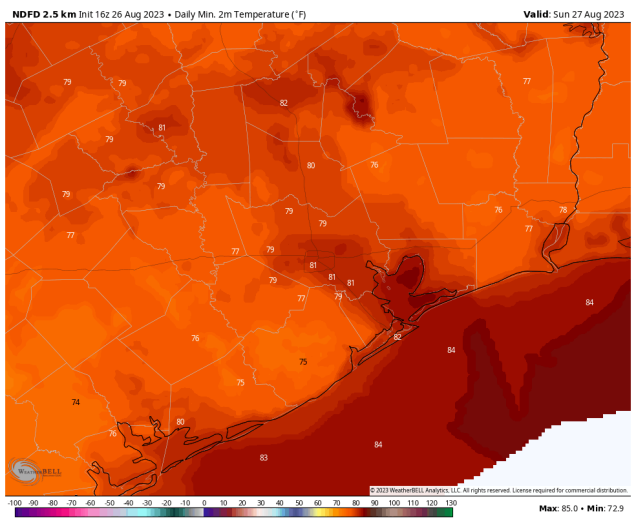
Low Temps: **S of Morgan's Point:** Mid 80s F. **N of Morgan's Point:** Low 80s F.

Visibility: Not anticipating any fog issues at this time.

Precip Image: 3 PM CT



Wind Speed:
6 PM CT



Low Temps
Sun AM

Houston Pilots: Sun. 8/27/2023

Forecast Discussion

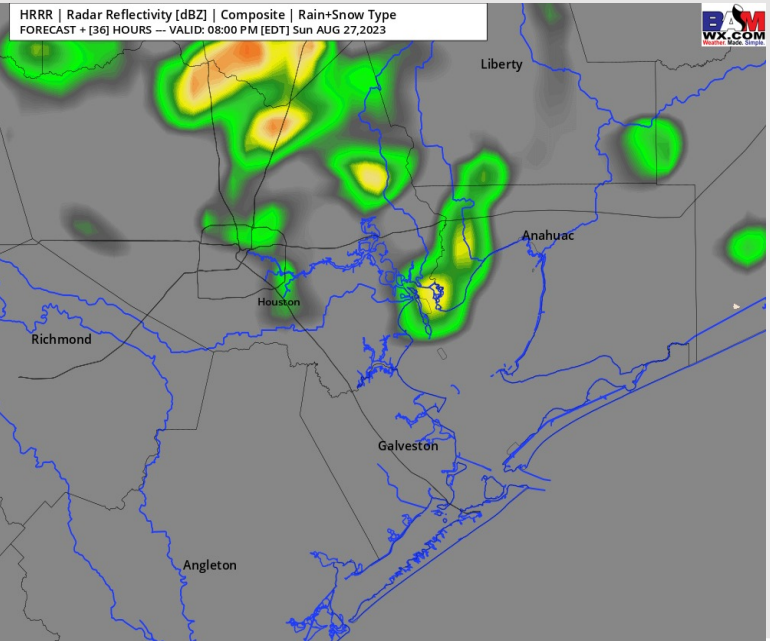
Precip: Favoring dry conditions for the majority of the day, with a brief 10% chance for isolated showers between 6-10 AM for Stations N of Morgan's Point. Then after 5 PM, favoring hit/miss showers/storms to be possible for Stations N of Morgan's Point for the rest of the day.

Wind: Winds will start out of the SSW before shifting out of the NW by 8 AM, becoming variable between 2-5 PM, and settling out of the SW after 5 PM. Winds will then once again become variable after 8 PM, remaining that way for the rest of the day. **N of Morgan's Point:** 3-8 kts throughout the majority of the day aside for a brief increase to 8-13 kts from 7-9 PM. **S of Morgan's Point:** 10-15 kts until 11 AM, calming to 3-8 kts through 4 PM. After 4 PM, winds will increase to 11-16 kts for the rest of the day.

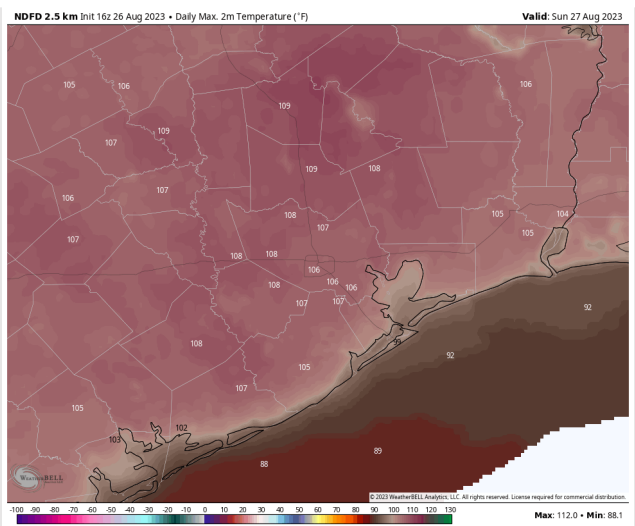
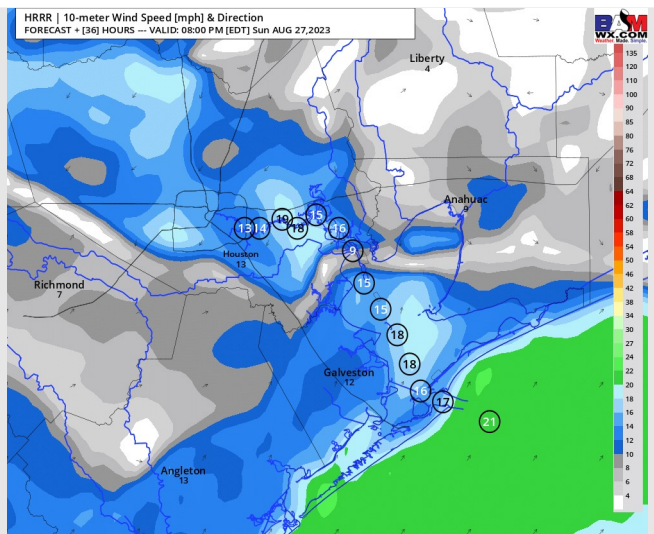
High Temps: **S of Morgan's Point:** Mid 90s F (Near Boarding Station), Upper 90s F/Low 100s F for all other stations. **N of Morgan's Point:** Mid 100s F.

Visibility: No visibility issues expected Sunday.

Precip Image: 7 PM CT



Wind Speed:
7 PM CT



High Temps
Sunday

Forecast Discussion

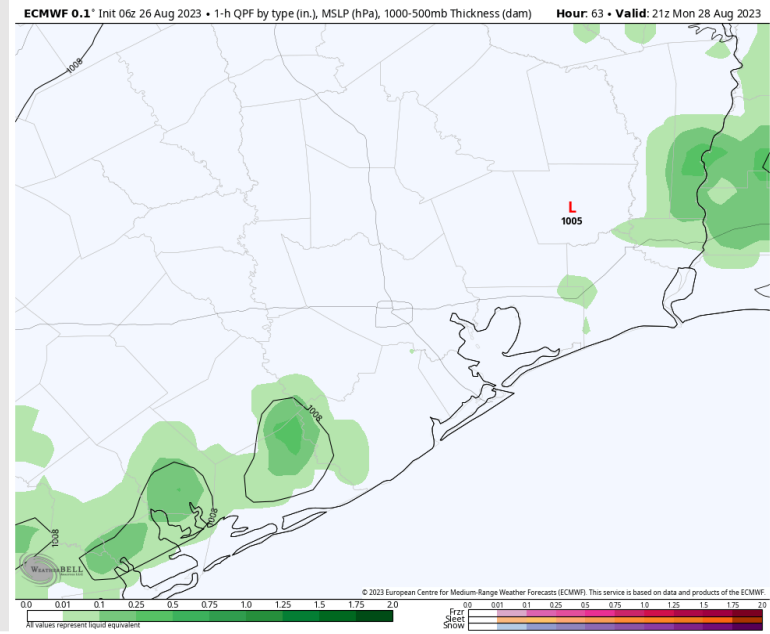
Precip: Favoring dry conditions through the AM hours. Then, anticipating hit/miss showers/storms to move in around 1 PM, lasting through 5 PM. After 5 PM, favoring coverage to become isolated in nature through the rest of the day.

Wind: Winds will be variable in direction throughout the day. **N of Morgan's Point:** 2-7 kts throughout the day. **S of Morgan's Point:** 2-7 kts through 4 PM, with a brief increase to 4-9 kts between 7-10 AM. After 4 PM, winds will increase to 7-12 kts for the remainder of the evening.

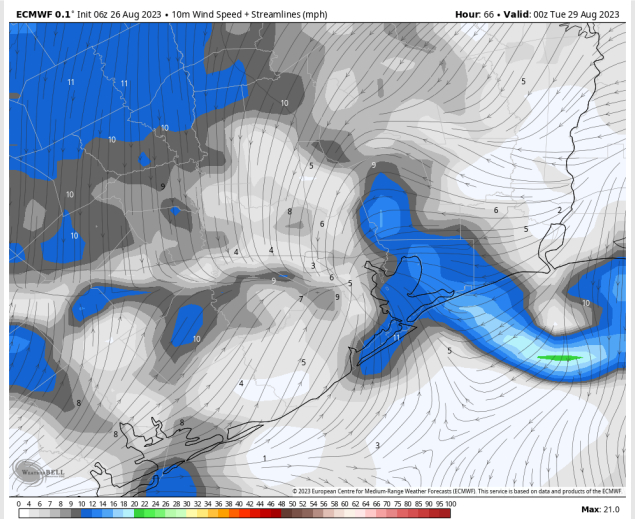
High Temps: **S of Morgan's Point:** Low/Mid 90s F. **N of Morgan's Point:** Low 100s F.

Visibility: No Visibility concerns at this time.

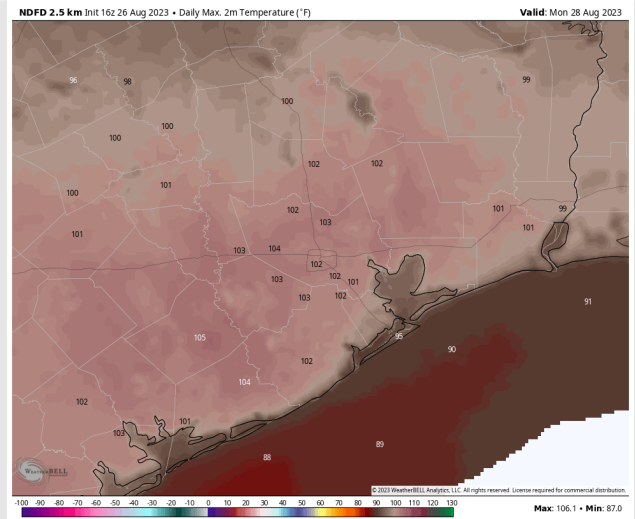
Precip Image: 4 PM CT



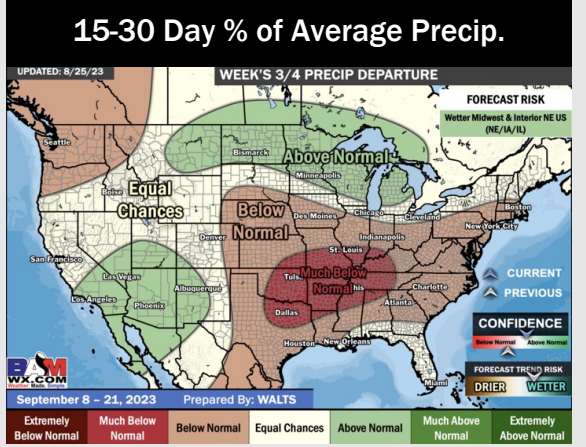
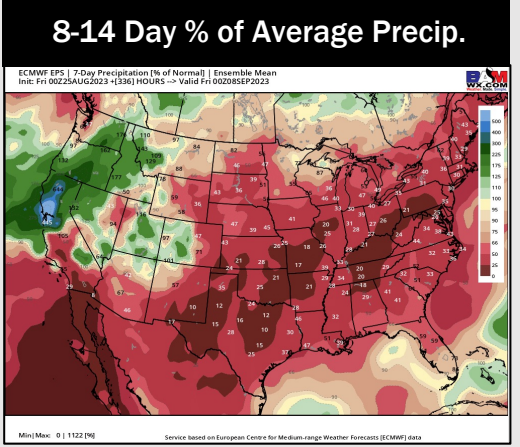
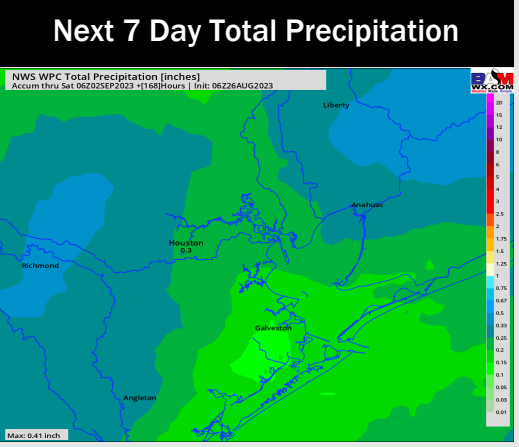
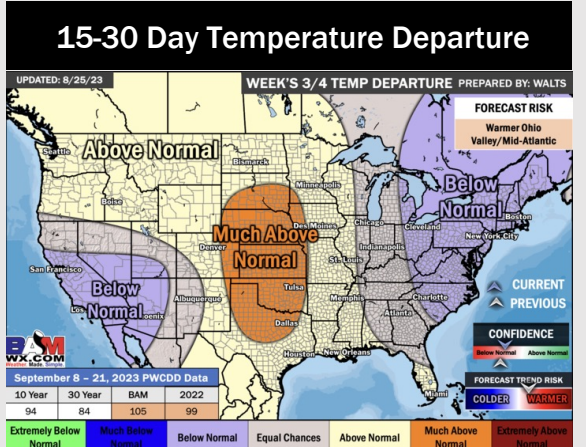
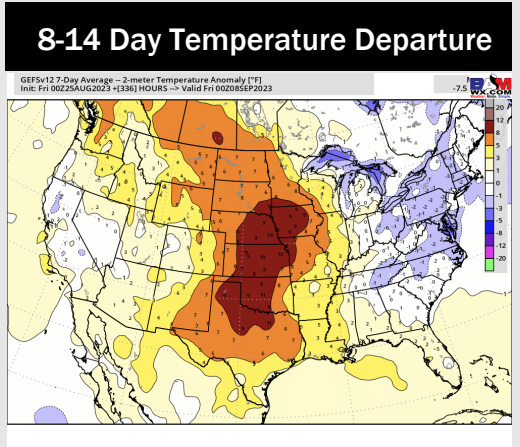
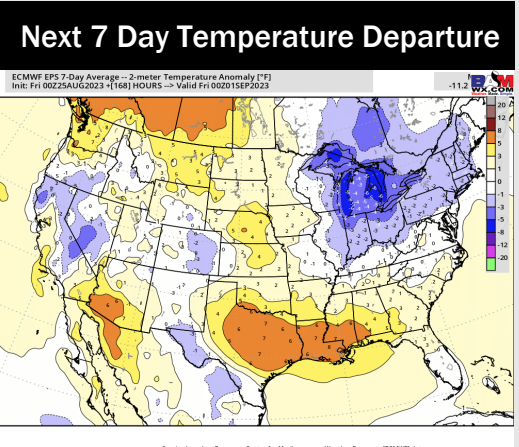
**Wind Speed:
7 PM CT**



**High Temps
Monday**



Houston Pilots: 8/26/23



- Minor rain chances are expected Sunday - Tuesday. Expect temperatures to continue to remain above normal.
- Expecting below normal precipitation chances and above normal temperatures for the week 2 timeframe.
- Above normal temperatures and below normal chances for precipitation are favored in the weeks 3/4 timeframe.