

# Houston Pilots Forecast Package



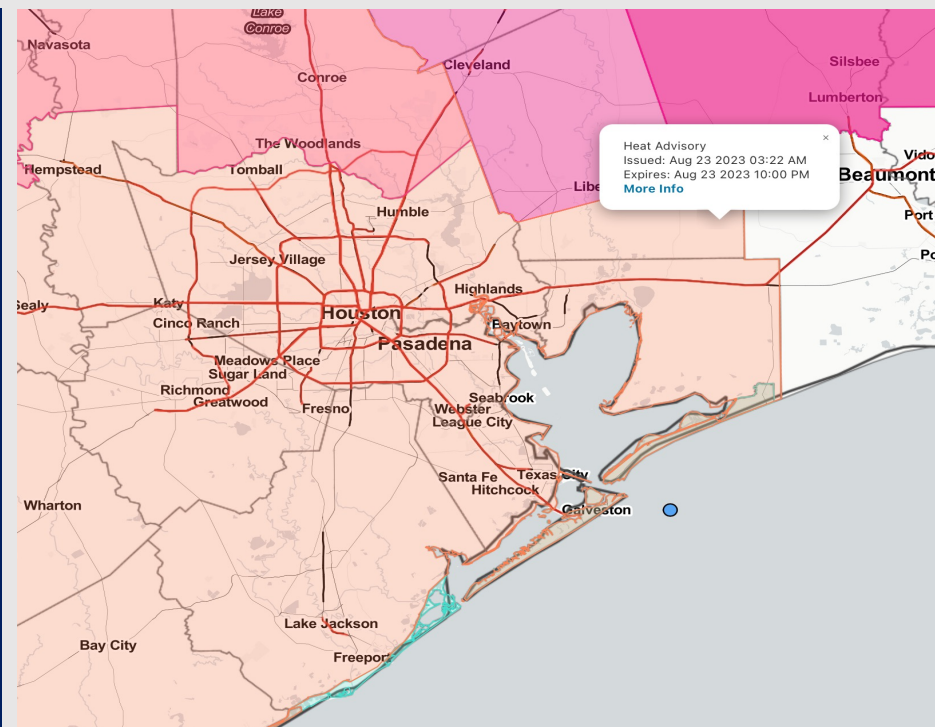
Updated: 2:05 PM CT

Wednesday, August 23, 2023

Forecaster: Alyssa McClung

## Weather Headlines

- With Tropical Storm Harold made landfall TUE, no tropical threats anticipated over the next 7 days.
- Scattered afternoon showers /storms will be possible over the next few days.
- Feels like temperatures of 105-110 F will be possible during the afternoon hours to end this week.



**Radar/NWS Alerts: 2:00 PM CT**



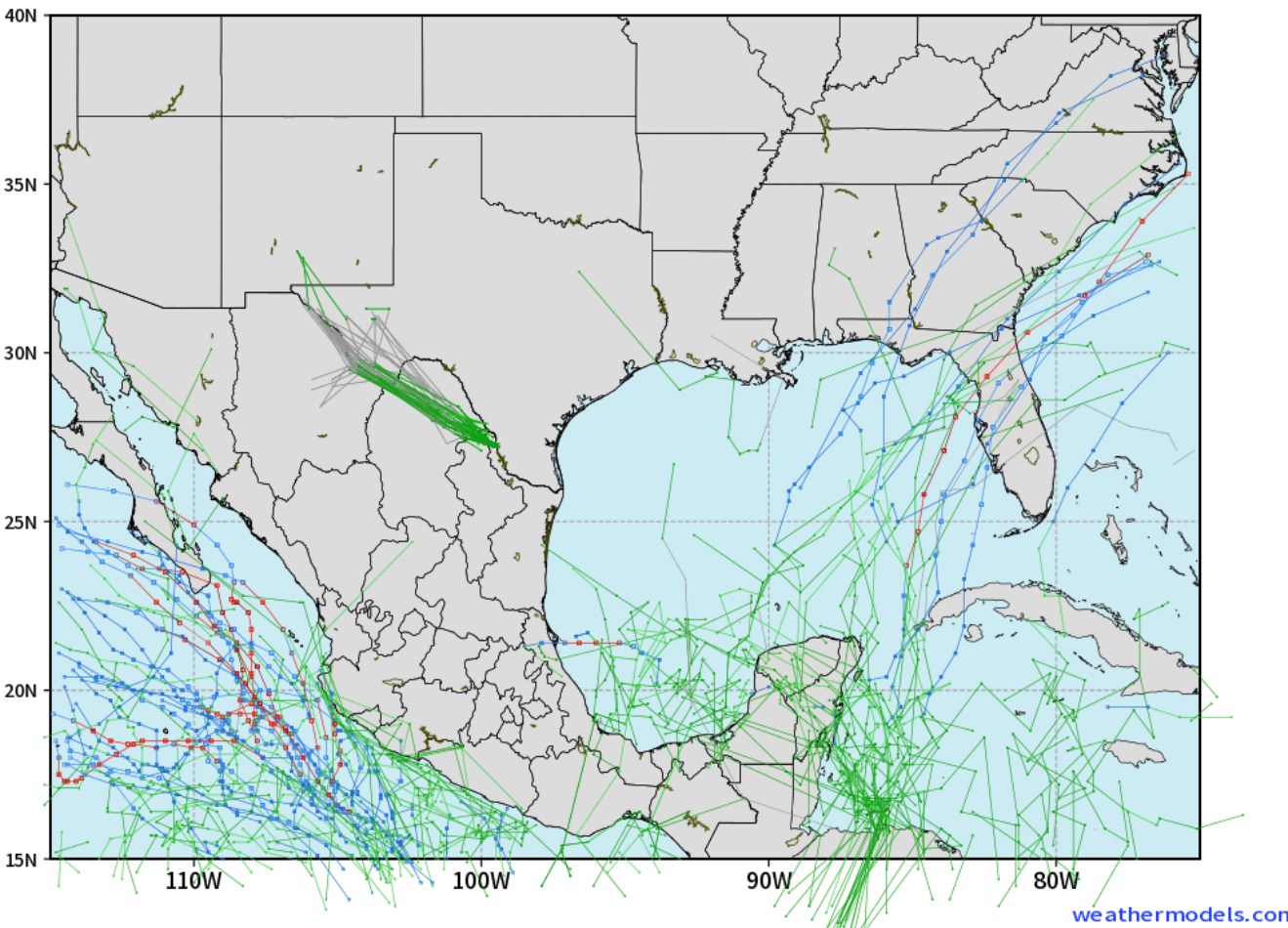
As always, please do not hesitate to reach out to us with any forecast questions via the chat option on the Weather Porthole or our on-call number, **(317)-560-8122** press 1 for forecast questions.

# Houston Pilots Tropical Update

## Tropical Storm Harold Track

ECMWF GULF EPS Cyclone Locations --> Next [10-days]  
INIT: 00Z23AUG2023 --> UNTIL 00Z02SEP2023

o-o ENSEMBLE MEAN  
o-o 1000 - 1010 hPa  
o-o 980 - 999 hPa  
o-o 960 - 979 hPa  
o-o 950 - 959 hPa  
o-o < 950 hPa



Tropical Storm Harold is over land. No immediate tropical threats over the next 7 days.

We are monitoring the potential for development of a low-pressure system in the southern Caribbean late this week/early next week, however favoring it to stay in the eastern Gulf.

# Houston Pilots Visibility Chart (miles)



## Forecast Confidence



Time	Wed 1pm	Wed 2pm	Wed 3pm	Wed 4pm	Wed 5pm	Wed 6pm	Wed 7pm	Wed 8pm	Wed 9pm	Wed 10pm	Wed 11pm	Thu 12am	Thu 1am	Thu 2am	Thu 3am	Thu 4am	Thu 5am	Thu 6am	Thu 7am	Thu 8am	Thu 9am	Thu 10am	Thu 11am	Thu 12pm	Thu 1pm	Thu 2pm	Thu 3pm	Thu 4pm	Thu 5pm	Thu 6pm	Thu 7pm	Thu 8pm	Thu 9pm	Thu 10pm	Thu 11pm	Fri 12am	
610 Bridge	10	10	10	10	10	10	10	10	10	10	10	10	10	10	10	10	10	10	10	10	10	10	10	10	10	10	10	10	10	10	10	10	10	10	10	10	10
Kinder 1	10	10	10	10	10	10	10	10	10	10	10	10	10	10	10	10	10	10	10	10	10	10	10	10	10	10	10	10	10	10	10	10	10	10	10	10	10
Greens Bayou	10	10	10	10	10	10	10	10	10	10	10	10	10	10	10	10	10	10	10	10	10	10	10	10	10	10	10	10	10	10	10	10	10	10	10	10	10
Shell Crude	10	10	10	10	10	10	10	10	10	10	10	10	10	10	10	10	10	10	10	10	10	10	10	10	10	10	10	10	10	10	10	10	10	10	10	10	10
Lynchburg Ferries	10	10	10	10	10	10	10	10	10	10	10	10	10	10	10	10	10	10	10	10	10	10	10	10	10	10	10	10	10	10	10	10	10	10	10	10	10
Exxon 3	10	10	10	10	10	10	10	10	10	10	10	10	10	10	10	10	10	10	10	10	10	10	10	10	10	10	10	10	10	10	10	10	10	10	10	10	10
Morgans Point	10	10	10	10	10	10	10	10	10	10	10	10	10	10	10	10	10	10	10	10	10	10	10	10	10	10	10	10	10	10	10	10	10	10	10	10	10
75/76	10	10	10	10	10	10	10	10	10	10	10	10	10	10	10	10	10	10	10	10	10	10	10	10	10	10	10	10	10	10	10	10	10	10	10	10	10
63/64	10	10	10	10	10	10	10	10	10	10	10	10	10	10	10	10	10	10	10	10	10	10	10	10	10	10	10	10	10	10	10	10	10	10	10	10	10
51/52	10	10	10	10	10	10	10	10	10	10	10	10	10	10	10	10	10	10	10	10	10	10	10	10	10	10	10	10	10	10	10	10	10	10	10	10	10
37/38	10	10	10	10	10	10	10	10	10	10	10	10	10	10	10	10	10	10	10	10	10	10	10	10	10	10	10	10	10	10	10	10	10	10	10	10	10
25/26	10	10	10	10	10	10	10	10	10	10	10	10	10	10	10	10	10	10	10	10	10	10	10	10	10	10	10	10	10	10	10	10	10	10	10	10	10
11/12	10	10	10	10	10	10	10	10	10	10	10	10	10	10	10	10	10	10	10	10	10	10	10	10	10	10	10	10	10	10	10	10	10	10	10	10	10
1 & 2 Bravo	10	10	10	10	10	10	10	10	10	10	10	10	10	10	10	10	10	10	10	10	10	10	10	10	10	10	10	10	10	10	10	10	10	10	10	10	10

**NOTE: This is automated data that may/may not agree with the official BAM thinking that's found on the daily slides or special visibility report slides. This data should be used as a guide only**

# Houston Pilots Wind Chart



## Forecast Confidence



## Example

Sustained wind 13 Knots  
Gusts 18 Knots  
Wind from the N

WS: 13  
G:18  
N

Time Knots	Wed 1pm	Wed 2pm	Wed 3pm	Wed 4pm	Wed 5pm	Wed 6pm	Wed 7pm	Wed 8pm	Wed 9pm	Wed 10pm	Wed 11pm	Thu 12am	Thu 1am	Thu 2am	Thu 3am	Thu 4am	Thu 5am	Thu 6am	Thu 7am	Thu 8am	Thu 9am	Thu 10am	Thu 11am	Thu 12pm	Thu 1pm	Thu 2pm	Thu 3pm	Thu 4pm	Thu 5pm	Thu 6pm	Thu 7pm	Thu 8pm	Thu 9pm	Thu 10pm	Thu 11pm	Fri 12am	
610 Bridge	6	6	7	7	7	8	8	7	5	5	4	4	4	4	4	5	4	4	4	5	6	6	5	5	4	5	6	6	6	7	9	7	6	6	5	4	
	ESE	ESE	SE	ESE	SE	SE	SSE	S	S	SSW	SSW	SW	WSW	WSW	W	W	WNW	WNW	WNW	NW	NW	NW	NNW	N	NNE	NE	ENE	ENE	ESE	SE	ESE	SSE	S	S	S	S	
Kinder 1	6	6	7	7	8	8	8	7	5	4	4	4	4	4	4	4	4	4	4	5	6	6	5	5	4	5	6	6	6	8	9	7	6	6	5	4	
	ESE	ESE	SE	SE	SE	SE	SSE	S	S	SSW	SSW	SW	WSW	WSW	W	W	WNW	WNW	WNW	NW	NW	NW	NNW	N	NNE	NE	ENE	E	ESE	SE	ESE	SSE	S	S	S	S	
Greens Bayou	6	6	7	7	8	8	8	6	5	4	4	4	4	4	4	4	4	4	4	5	6	6	5	5	4	5	6	6	7	8	9	7	7	6	5	4	
	ESE	SE	SE	SE	SE	SE	SSE	S	S	SSW	SSW	SW	WSW	WSW	W	W	WNW	WNW	WNW	NW	NW	NW	NNW	N	NNE	NE	ENE	E	SE	SE	SSE	SSE	S	S	S	S	
Shell Crude	6	6	7	8	8	8	8	6	5	5	5	5	4	4	4	4	4	4	4	5	6	6	5	5	4	5	6	6	7	9	10	8	7	6	5	4	
	ESE	SE	SE	SE	SE	SE	SSE	S	S	SSW	SSW	SW	WSW	WSW	W	W	WNW	WNW	WNW	NW	NW	NW	NNW	N	NNE	NE	E	SE	SE	SE	SSE	SSE	S	S	S	S	
Lynchburg Ferries	6	7	8	8	9	9	9	7	6	5	5	5	5	5	5	4	4	4	4	5	6	6	5	5	4	5	6	7	8	10	11	9	8	7	6	5	
	SE	SE	SE	SE	SSE	SSE	SSE	S	S	SSW	SSW	SW	WSW	WSW	W	W	WNW	WNW	WNW	NW	NW	NW	NNW	N	NNE	NE	E	SE	SSE	SE	SSE	SSE	S	S	S	S	
Exxon 3	6	7	8	9	10	10	9	7	6	6	6	6	6	5	5	5	5	5	5	6	6	6	6	5	5	6	7	8	9	11	11	9	8	7	6	6	
	SE	SE	SE	SSE	SSE	SSE	SSE	S	S	SSW	SSW	SW	WSW	WSW	W	W	WNW	WNW	WNW	NW	NW	NW	NNW	N	NNE	ENE	ESE	ESE	SE	SSE	SE	SSE	SSE	S	S	S	
Morgans Point	7	8	9	10	11	11	10	8	7	6	7	7	7	7	7	6	6	6	6	7	7	7	6	5	5	6	6	8	9	11	12	10	10	8	7	7	
	SE	SE	SE	SSE	SSE	SSE	S	S	SSW	SSW	SW	WSW	WSW	W	W	WNW	WNW	NW	NW	NW	NW	NW	NNW	NNW	NE	ESE	SE	SE	SE	SSE	SE	SSE	S	S	S	S	
75/76	6	8	10	11	12	12	12	10	9	8	8	8	8	8	9	8	8	8	8	8	8	8	7	6	5	5	6	8	10	12	14	14	14	12	11	10	9
	SE	SE	SE	SSE	SSE	SSE	S	S	SSW	SSW	SW	WSW	WSW	W	W	WNW	WNW	NW	NW	NW	NW	NW	NNW	SW	ESE	SE	SE	SSE	SSE	SE	SSE	S	S	S	S	S	
63/64	6	7	9	10	11	12	11	10	8	8	8	8	8	8	9	9	9	8	8	9	9	8	6	5	5	5	7	9	12	13	13	12	11	10	9	8	
	SE	SE	SE	SSE	SSE	SSE	S	S	SSW	SSW	SW	SW	WSW	WSW	W	W	WNW	WNW	NW	NW	NW	NNW	NNW	SSW	ESE	SE	SE	SSE	SSE	SSE	SSE	SSE	SSE	S	S	S	
51/52	6	7	8	9	10	10	10	9	8	7	8	8	8	8	8	8	8	8	8	8	8	9	8	6	5	4	5	7	9	11	12	13	11	10	9	8	
	ESE	SE	SE	SSE	SSE	SSE	S	S	SSW	SSW	SW	SW	WSW	WSW	W	W	WNW	NW	NW	NW	NNW	NNW	SW	SE	SSE	SSE	SSE	SSE	SSE	SSE	SSE	SSE	S	S	S	S	
37/38	7	7	8	9	9	9	9	8	7	6	7	7	7	8	8	8	8	8	8	8	8	9	8	6	5	5	7	9	10	11	11	10	9	8	7	7	
	ESE	SE	SE	SSE	SSE	SSE	S	S	SSW	SSW	SW	SW	WSW	WSW	W	W	WNW	WNW	NW	NW	NW	NNW	NNW	SW	SSE	SSE	SSE	SSE	SSE	SSE	SSE	SSE	S	S	S	S	
25/26	7	8	8	8	8	8	7	7	6	6	6	6	6	7	7	7	7	7	7	7	8	8	8	6	5	5	7	8	9	10	10	9	8	7	7	7	
	ESE	ESE	SE	SE	SSE	SSE	S	S	SSW	SSW	SW	SW	WSW	WSW	W	W	WNW	WNW	NW	NW	NW	NNW	NNW	W	SW	SSE	SSE	SSE	SSE	SSE	S	S	S	S	S		
11/12	8	8	8	8	8	7	7	7	6	6	6	6	7	7	7	7	7	7	7	7	8	8	7	6	5	5	7	8	9	9	9	9	8	8	7	7	
	E	ESE	SE	SE	SSE	SSE	S	S	SSW	SSW	SW	SW	WSW	WSW	W	W	WNW	WNW	NW	NW	NW	NNW	NNW	NW	SSW	S	S	S	S	S	S	S	S	S	S		
1 & 2 Bravo	7	7	7	7	8	8	8	7	7	7	7	8	8	8	9	9	9	9	9	9	9	9	8	6	5	5	6	8	9	10	10	10	9	8	8	8	
	E	ESE	ESE	SE	SSE	SSE	S	S	SSW	SSW	SSW	SW	SW	WSW	WSW	W	W	WNW	WNW	NW	NW	NW	NNW	NNW	NW	SSW	S	S	S	S	S	S	S	S	S		

NOTE: This is automated data that may/may not agree with the official BAM thinking that's found on the daily slides. This data should be used as a guide only

## Forecast Discussion

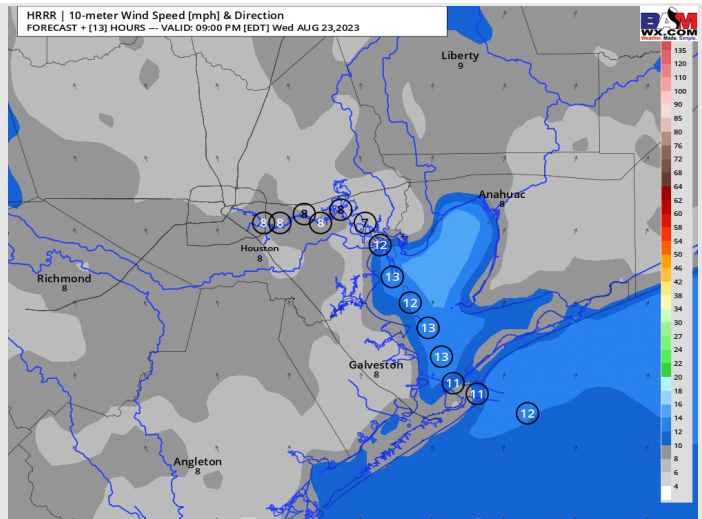
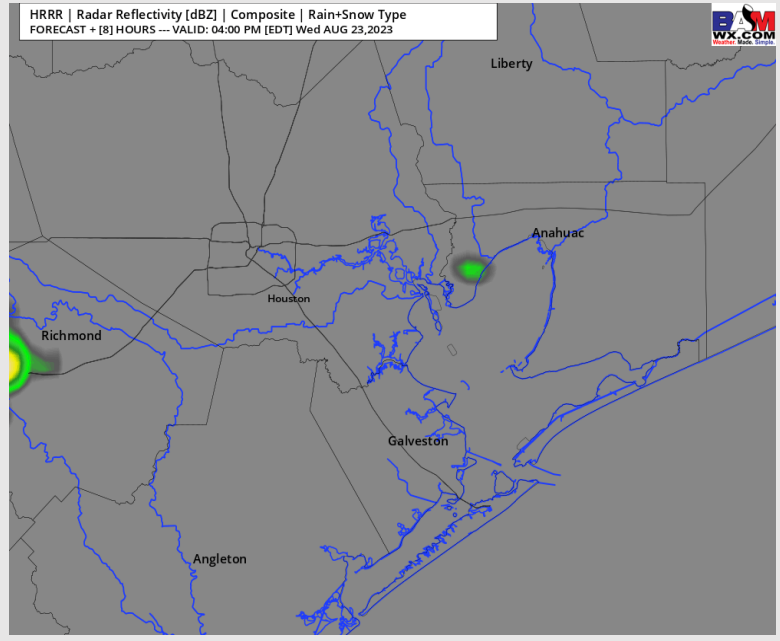
**Precip:** Favoring dry conditions for the majority of the evening with a very isolated chance for a shower within the 4-7 PM timeframe.

**Wind:** Winds favored to be out of the SSE throughout the rest of the evening. **Winds N of Morgan's Point** will be 5-10 kts while winds **S of Morgan's Point** expected to sit at 10-15 kts. Gusts favored to get up towards 20 kts nearing 11 PM-midnight continuing through the overnight.

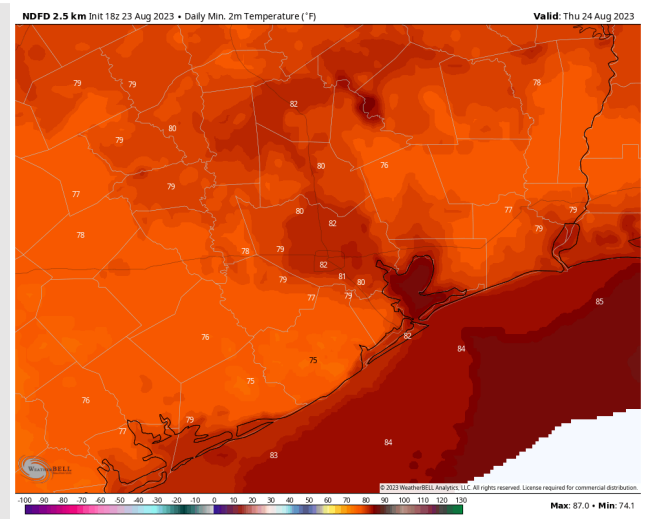
**Low Temps:** **S of Morgan's Point:** Mid 80s F. **N of Morgan's Point:** Low 80s.

**Visibility:** Not anticipating any fog issues at this time.

## Precip Image: 3 PM CT



**Wind Speed:**  
8 PM CT



**Low Temps**  
THU AM

## Forecast Discussion

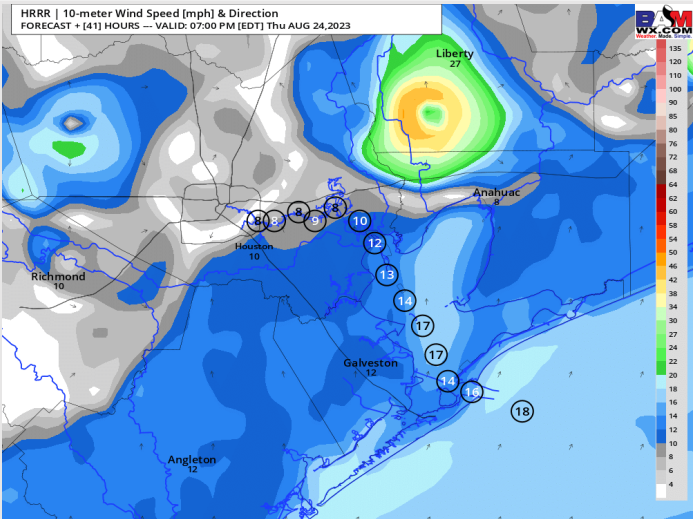
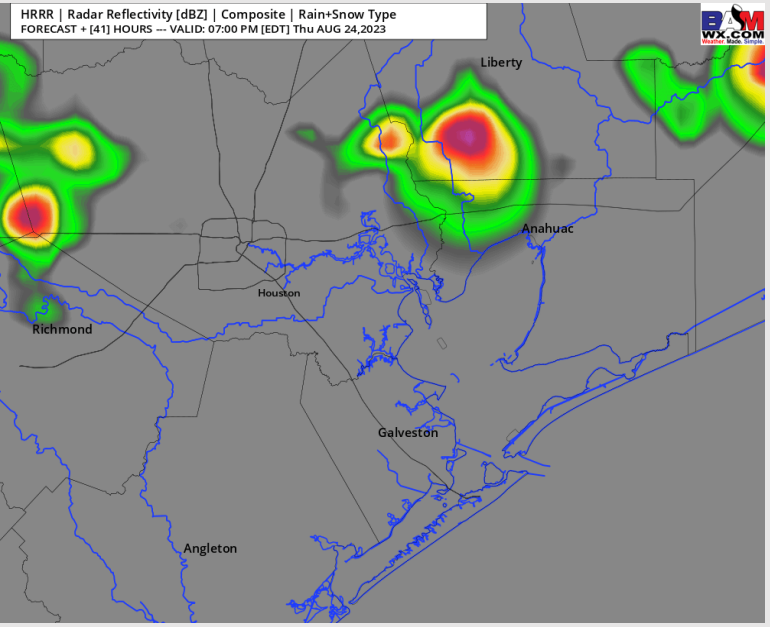
**Precip:** Dry conditions anticipated Thursday morning with scattered showers/storms (20-30%) after 3 PM for stations primarily north of Morgan's Point. Storms capable of producing heavy downpours, lightning and isolated pockets of hail.

**Wind:** Winds will start out of the W/SW in the early morning before veering to out of the NW by 7 AM. After 2 PM, winds will gradually shift to being out of the SW by 5 PM and continue there the rest of the evening. **Winds North of Morgan's Point** will be 3-8 kts the entire day. **Winds South of Morgan's Point** will be 9-14 kts throughout the entire day outside of a slight decrease to 4-9kts from 11 AM – 3 PM. Storm related gusts likely reaching 40-50 MPH.

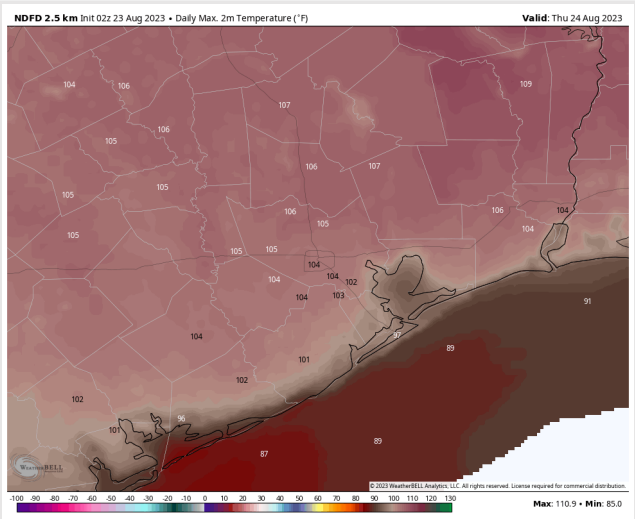
**Low Temps:** S of Morgan's Point: Low 90's F. N of Morgan's Point: Low 100s F.

**Visibility:** No visibility issues expected on Thursday.

## Precip Image: 6 PM CT



**Wind Speed:  
6 PM CT**



**High Temps  
Thursday**

# Houston Pilots: Fri. 8/25/2023



## Forecast Discussion

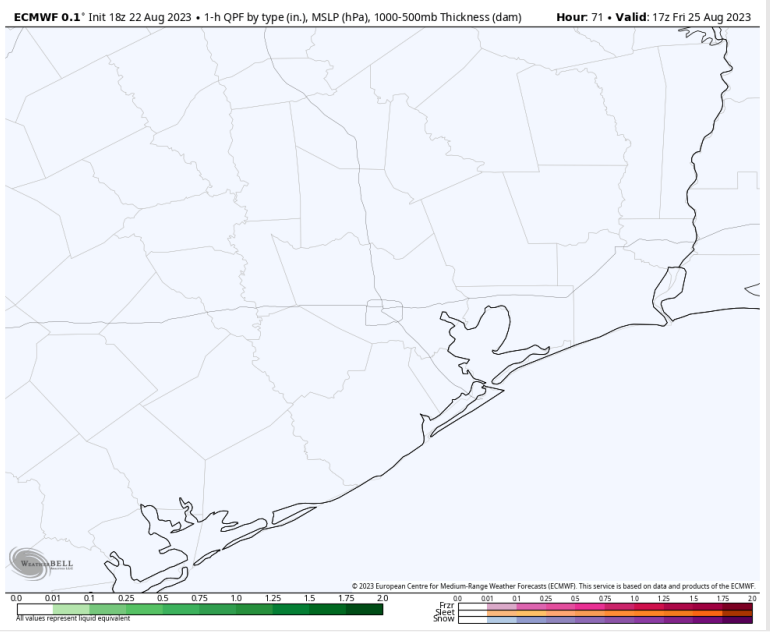
**Precip:** Dry conditions anticipated on Friday.

**Wind:** Winds will start out of the W/SW in the AM hours before shifting to being out of the SE at 12 PM. After 12 PM, winds will be out of the S/SE the rest of the day. Winds N of Morgan's Point will be 3-8 kts until 4 PM before increasing to 7-12 kts the rest of the day. Winds S of Morgan's Point will be 6-11 kts through 6 AM, then decrease to 3-8 kts until 4 PM. After 4 PM, winds increase to 8-13 kts the rest of the day.

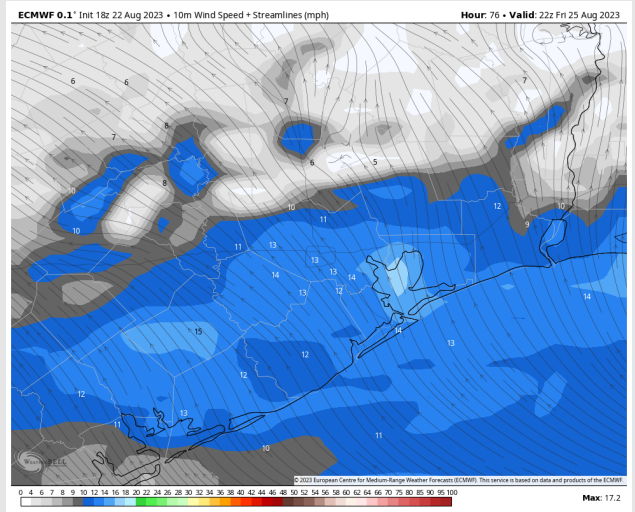
**High Temps:** S of Morgan's Point: Low 90s F. N of Morgan's Point: Low 100s F.

**Visibility:** No Visibility concerns at this time.

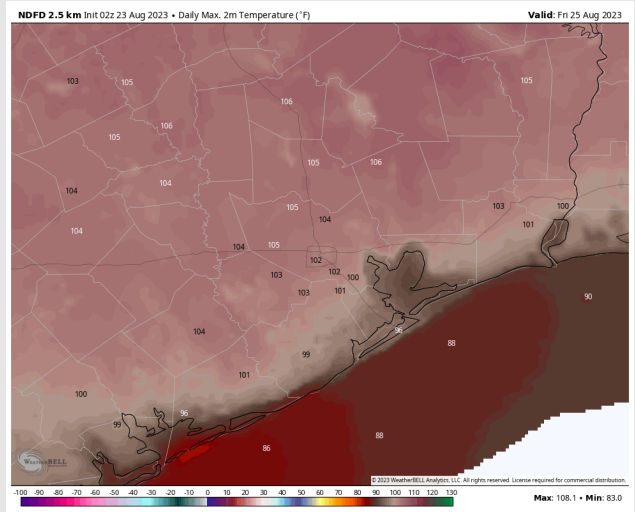
## Precip Image: 12 PM CT



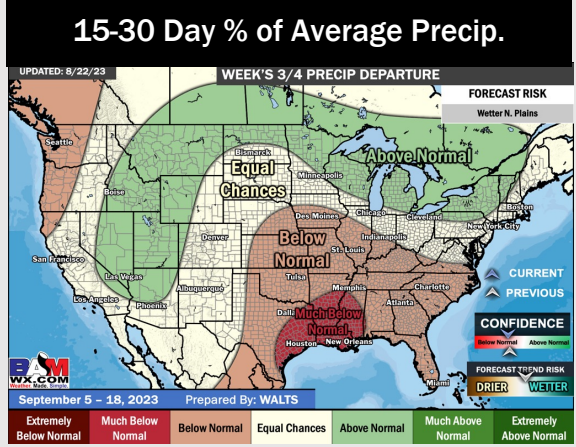
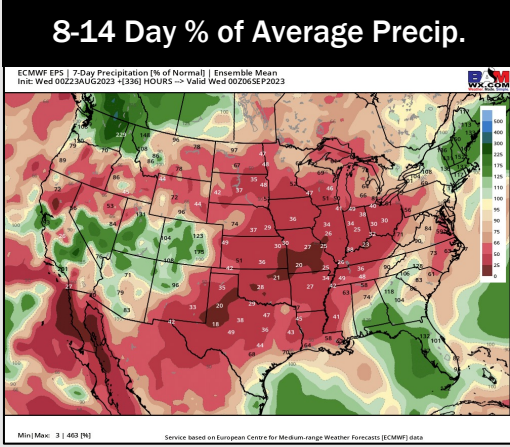
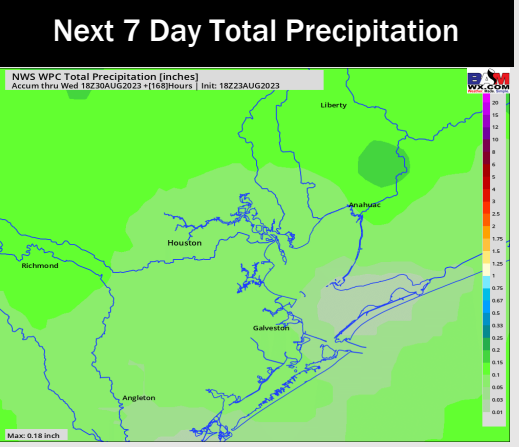
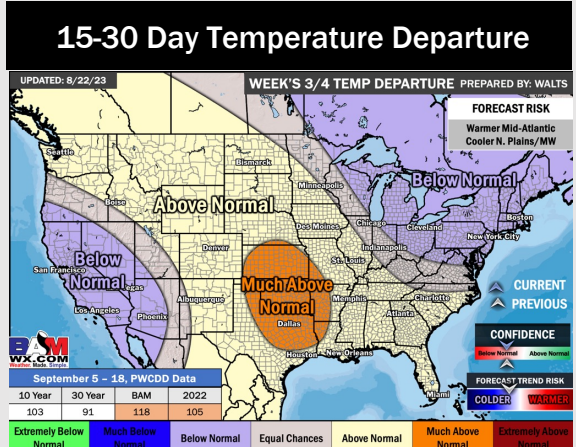
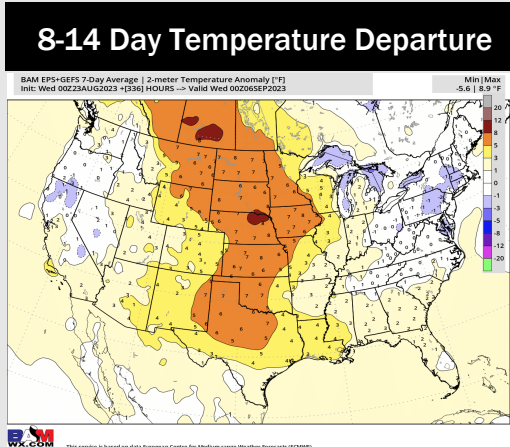
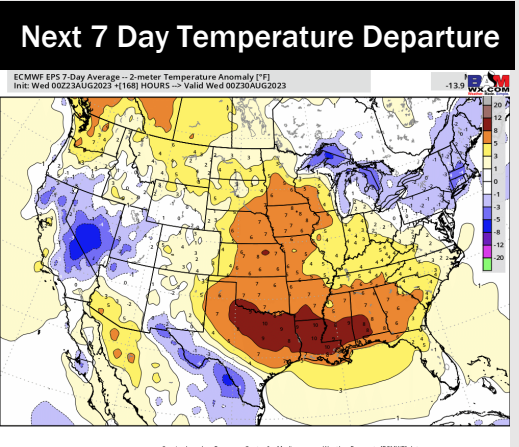
Wind Speed:  
5 PM CT



High Temps  
Friday



# Houston Pilots: 8/23/23



- Tomorrow will be the best day for precipitation, with some additional minor chances later this week. Expect temperatures to continue to remain above normal.
- Expecting below normal precipitation chances and above normal temperatures for the week 2 timeframe.
- Above normal temperatures and much below normal chances for precipitation are favored in the weeks 3/4 timeframe.