

Houston Pilots Forecast Package



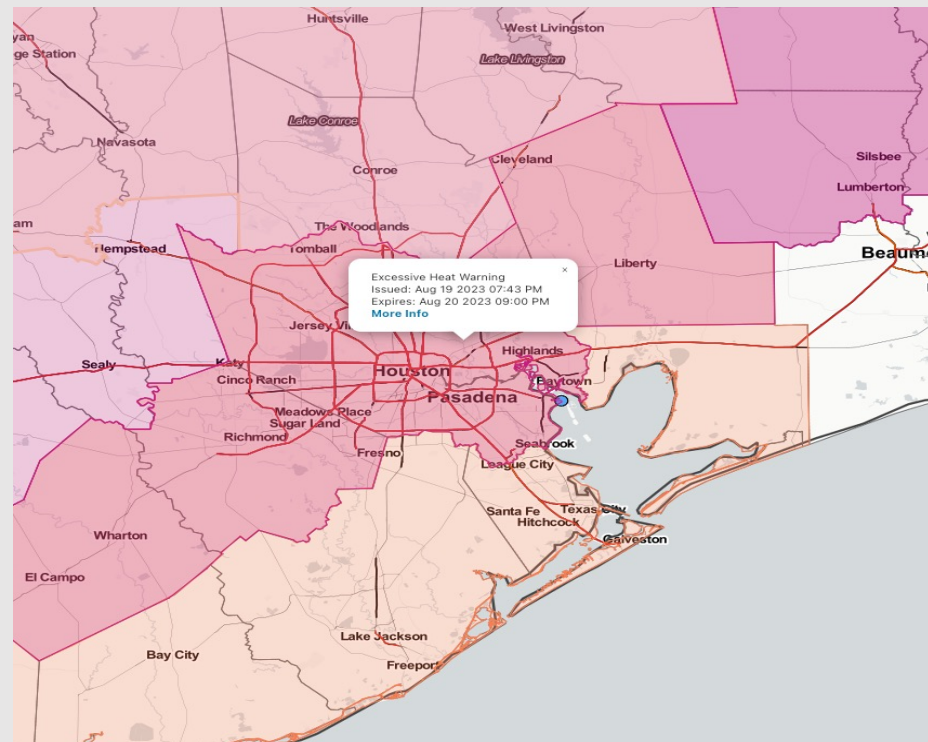
Updated: 12:00 PM CT

Sunday, August 20, 2023

Forecaster: Jonathan Kipper

Weather Headlines

- **Tuesday needs watched for increased rain/wind potential due to potential tropical disturbance. Timing/details will continue to be updated. (See Tropical Update Slides Below)**
- **Afternoon “feels like” temps will sit 105-110F across the area this afternoon.**
- **MON/TUE continue to be the main threats for precip with dry conditions favored mid/late this week.**



Radar/NWS Alerts: 12:00 PM CT



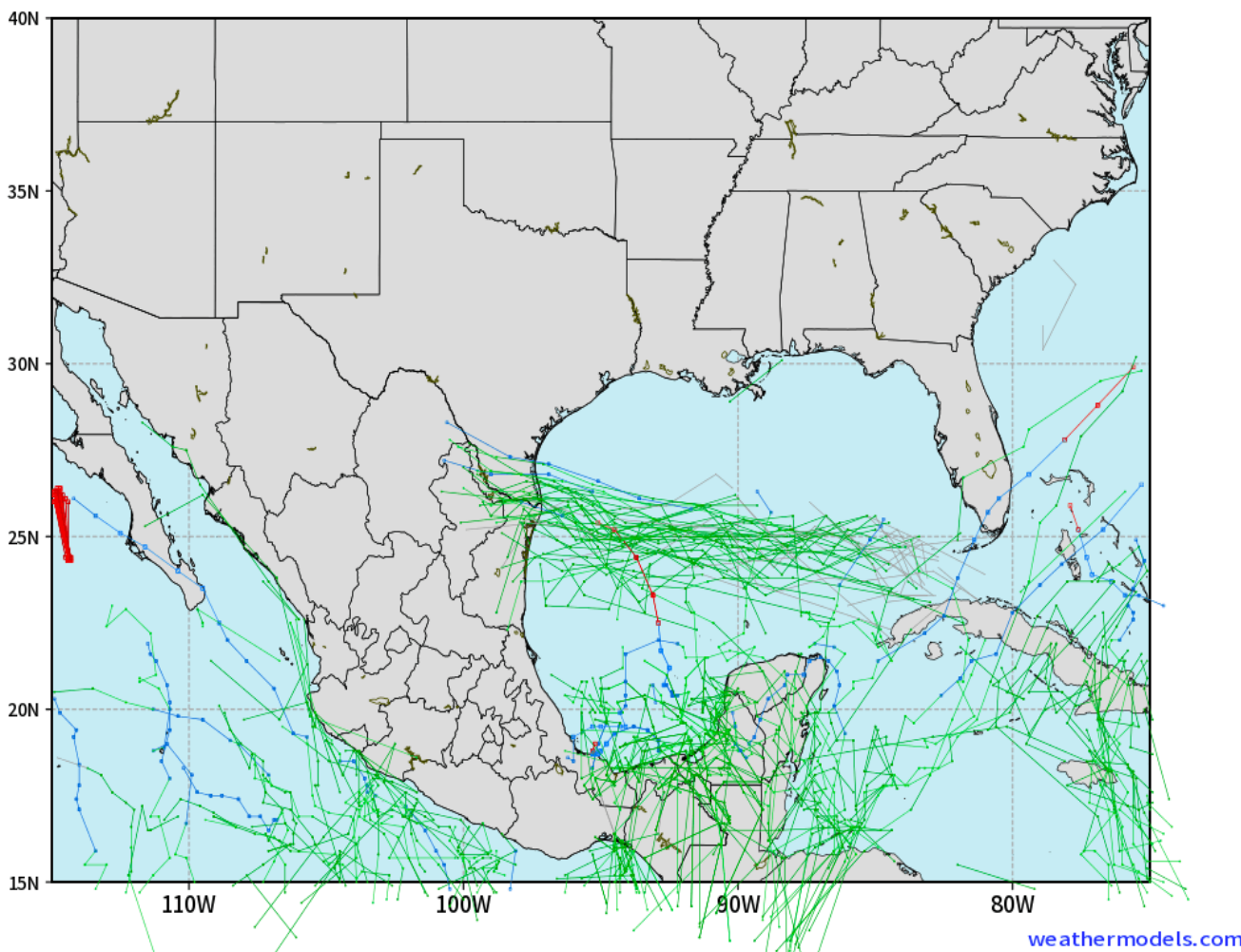
As always, please do not hesitate to reach out to us with any forecast questions via the chat option on the Weather Porthole or our on-call number, **(317)-560-8122** press 1 for forecast questions.

Houston Pilots Tropical Update

European Low-Pressure Tracks Next 10-Days

ECMWF GULF EPS Cyclone Locations --> Next [10-days]
INIT: 00Z20AUG2023 --> UNTIL 00Z30AUG2023

o-o ENSEMBLE MEAN
o-o 1000 - 1010 hPa
o-o 980 - 999 hPa
o-o 960 - 979 hPa
o-o 950 - 959 hPa
o-o < 950 hPa



Anticipating an organized system associated with locally heavy rain / increasing winds pushing westward across the gulf, with impacts arriving Tuesday morning.

The bulk of this system and area of greatest impacts / landfall continues to trend further south.

Right now, we are in favor of this system becoming a tropical depression, with 2/10 confidence it can strengthen into low-end tropical storm, and 9/10 confidence the system **DOES NOT** reach hurricane status.

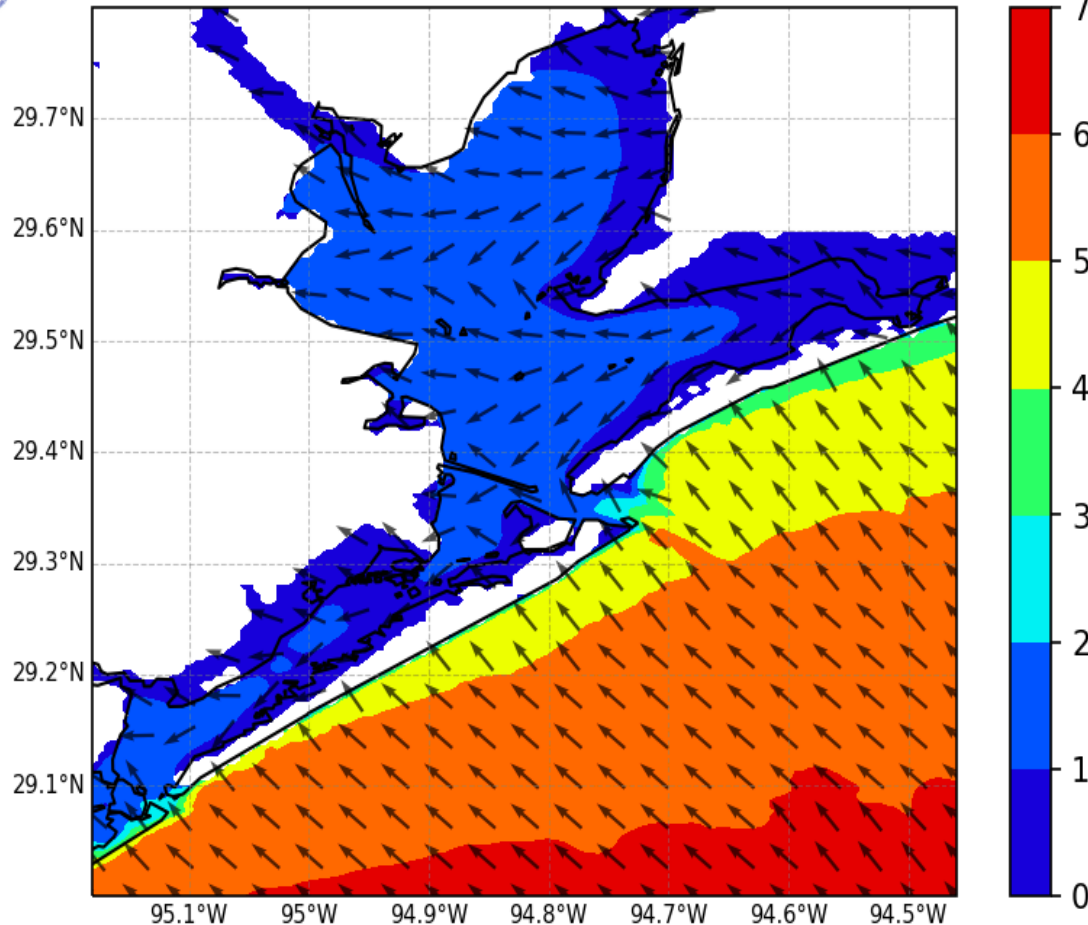
Sustained winds are not favored to reach 30+kts, but we will need to closely watch wave height, due to storm swells associated with the "right" side of the system. At the present time, these are not favored to reach above 5' / reach port condition triggers for locations south of 25/26.

Houston Pilots Tropical Update

Significant Wave Heights at 11 AM CT TUE



NWPS Significant Wave Height (ft) and Peak Wave Direction
Hour 57 (15Z22AUG2023)



The image to the left shows the peak wave heights and peak wave direction associated with the incoming tropical system.

The peak wave heights are anticipated to be late Tuesday AM / early Tuesday Afternoon.

Houston Pilots Visibility Chart (miles)



Time	Sun 11am	Sun 12pm	Sun 1pm	Sun 2pm	Sun 3pm	Sun 4pm	Sun 5pm	Sun 6pm	Sun 7pm	Sun 8pm	Sun 9pm	Sun 10pm	Sun 11pm	Mon 12am	Mon 1am	Mon 2am	Mon 3am	Mon 4am	Mon 5am	Mon 6am	Mon 7am	Mon 8am	Mon 9am	Mon 10am	Mon 11am	Mon 12pm	Mon 1pm	Mon 2pm	Mon 3pm	Mon 4pm	Mon 5pm	Mon 6pm	Mon 7pm	Mon 8pm	Mon 9pm	Mon 10pm
610 Bridge	10	10	10	10	10	10	10	10	10	10	10	10	10	10	10	10	10	10	10	10	8	10	10	10	10	10	10	10	10	10	10	10	10	10	10	10
Kinder 1	10	10	10	10	10	10	10	10	10	10	10	10	10	10	10	10	10	10	10	10	8	10	10	10	10	10	10	10	10	10	10	10	10	10	10	10
Greens Bayou	10	10	10	10	10	10	10	10	10	10	10	10	10	10	10	10	10	10	10	10	8	10	10	10	10	10	10	10	10	10	10	10	10	10	10	10
Shell Crude	10	10	10	10	10	10	10	10	10	10	10	10	10	10	10	10	10	10	10	10	9	10	10	10	10	10	10	10	10	10	10	10	10	10	10	10
Lynchburg Ferries	10	10	10	10	10	10	10	10	10	10	10	10	10	10	10	10	10	10	10	10	10	10	10	10	10	10	10	10	10	10	10	10	10	10	10	10
Exxon 3	10	10	10	10	10	10	10	10	10	10	10	10	10	10	10	10	10	10	10	10	10	10	10	10	10	10	10	10	10	10	10	10	10	10	10	10
Morgans Point	10	10	10	10	10	10	10	10	10	10	10	10	10	10	10	10	10	10	10	10	10	10	10	10	10	10	10	10	10	10	10	10	10	10	10	10
75/76	10	10	10	10	10	10	10	10	10	10	10	10	10	10	10	10	10	10	10	10	10	10	10	10	10	10	10	10	10	10	10	10	10	10	10	10
63/64	10	10	10	10	10	10	10	10	10	10	10	10	10	10	10	10	10	10	10	10	10	10	10	10	10	10	10	10	10	10	10	10	10	10	10	10
51/52	10	10	10	10	10	10	10	10	10	10	10	10	10	10	10	10	10	10	10	10	10	10	10	10	10	10	10	10	10	10	10	10	10	10	10	10
37/38	10	10	10	10	10	10	10	10	10	10	10	10	10	10	10	10	10	10	10	10	10	10	10	10	10	10	10	10	10	10	10	10	10	10	10	10
25/26	10	10	10	10	10	10	10	10	10	10	10	10	10	10	10	10	10	10	10	10	10	10	10	10	10	10	10	10	10	10	10	10	10	10	10	10
11/12	10	10	10	10	10	10	10	10	10	10	10	10	10	10	10	10	10	10	10	10	10	10	10	10	10	10	10	10	10	10	10	10	10	10	10	10
1 & 2 Bravo	10	10	10	10	10	10	10	10	10	10	10	10	10	10	10	10	10	10	10	10	10	10	10	10	10	10	10	10	10	10	10	10	10	10	10	10

NOTE: This is automated data that may/may not agree with the official BAM thinking that's found on the daily slides or special visibility report slides. This data should be used as a guide only

Houston Pilots Wind Chart



Sustained wind 13 Knots
Gusts 18 Knots
Wind from the N

Example

WS: 13
G:18
N

Time Knots	Sun 11am	Sun 12pm	Sun 1pm	Sun 2pm	Sun 3pm	Sun 4pm	Sun 5pm	Sun 6pm	Sun 7pm	Sun 8pm	Sun 9pm	Sun 10pm	Sun 11pm	Mon 12am	Mon 1am	Mon 2am	Mon 3am	Mon 4am	Mon 5am	Mon 6am	Mon 7am	Mon 8am	Mon 9am	Mon 10am	Mon 11am	Mon 12pm	Mon 1pm	Mon 2pm	Mon 3pm	Mon 4pm	Mon 5pm	Mon 6pm	Mon 7pm	Mon 8pm	Mon 9pm	Mon 10pm
610 Bridge	4	4	4	5	6	6	7	7	9	9	8	7	6	5	5	4	4	3	2	1	1	3	4	6	7	8	10	10	10	10	11	12	12	12	11	11
	7	7	7	8	9	9	10	11	13	14	12	11	9	7	7	6	5	4	3	2	2	4	6	8	11	13	15	15	15	16	17	18	18	18	17	17
	NW	NW	NW	NNW	SSE	E	ESE	SSE	SSE	S	S	S	S	S	S	S	S	ESE	E	NNE	NE	NE	NE	ENE	E	E	E	ESE	ESE	ESE	ESE	ESE	ESE	ESE	ESE	
Kinder 1	4	4	4	5	6	6	7	8	9	9	8	7	6	5	5	4	3	3	2	1	1	3	4	6	7	8	9	10	10	10	11	12	12	12	11	11
	7	7	7	8	9	9	10	12	14	14	12	11	9	7	7	6	5	4	3	2	2	5	6	9	11	13	15	15	16	17	18	18	18	17	17	
	NW	NW	NW	NNW	SE	E	ESE	SSE	S	S	S	S	S	S	S	S	S	ESE	NE	NNE	NNE	NE	NE	ENE	E	E	E	ESE	ESE	ESE	ESE	ESE	ESE	ESE	ESE	
Greens Bayou	4	4	4	5	6	6	7	8	9	9	8	7	6	5	5	4	3	3	2	1	2	3	5	6	7	8	9	10	10	10	11	12	12	12	11	11
	7	7	7	8	9	9	11	12	14	14	12	11	9	7	7	6	5	4	3	2	2	5	6	8	11	12	14	15	15	16	17	18	18	18	16	16
	NW	NW	NW	NNW	SSE	E	SE	SSE	S	S	S	S	S	S	S	S	SSE	ESE	NNE	NNE	NNE	NE	ENE	ENE	E	E	E	ESE	ESE	ESE	ESE	ESE	ESE	ESE	ESE	
Shell Crude	4	4	4	5	6	6	7	9	10	9	8	7	6	5	5	4	3	3	2	1	2	3	5	6	7	8	9	10	10	11	12	12	12	12	11	11
	7	7	7	8	9	9	11	12	14	14	13	11	9	8	7	6	5	4	2	2	2	5	7	9	11	12	14	15	16	17	18	18	18	17	16	16
	NW	NW	NW	NNW	SSE	ESE	SE	SSE	S	S	S	S	S	S	S	S	SSE	ENE	NNE	NNE	NNE	NE	ENE	ENE	E	E	E	ESE	ESE	ESE	ESE	ESE	ESE	ESE	ESE	
Lynchburg Ferries	5	5	5	5	6	7	8	10	11	10	9	8	6	6	5	4	4	3	2	1	2	3	5	6	7	8	10	10	11	11	13	13	12	12	11	11
	7	7	7	8	9	10	12	13	15	14	13	11	9	8	7	6	5	4	3	2	3	5	7	9	11	12	14	15	16	16	18	18	18	17	16	16
	NW	NW	NW	NNW	WSW	SE	SSE	SSE	S	S	S	S	S	S	S	S	SSE	ENE	NNE	NNE	NNE	NE	ENE	ENE	E	E	E	ESE	SE	ESE	ESE	ESE	ESE	ESE	ESE	
Exxon 3	5	5	5	5	6	8	9	11	12	11	10	8	7	6	6	5	4	3	2	3	4	5	6	7	9	10	11	12	12	14	13	13	12	12	12	
	7	7	8	8	10	11	13	14	16	15	13	11	9	8	8	7	6	4	3	3	4	5	7	9	11	12	14	15	16	17	18	18	18	17	16	16
	NW	NW	WNW	WNW	SSW	SSE	SSE	SSE	S	S	S	S	S	S	S	S	SSE	ESE	NNE	NNE	NNE	NE	ENE	ENE	E	E	ESE	ESE	SE	ESE	ESE	ESE	ESE	ESE	ESE	
Morgans Point	5	5	5	6	8	9	11	13	13	12	11	9	8	8	7	6	5	4	3	3	4	5	6	7	8	9	10	12	13	14	15	15	15	14	13	13
	7	7	8	9	11	12	14	15	16	15	13	11	10	9	8	7	5	4	4	4	5	6	8	9	11	12	15	16	17	18	19	19	19	18	17	16
	NW	WNW	WSW	SSW	SSE	SSE	SSE	SSE	S	S	S	S	S	S	S	S	S	WSW	SE	NNE	NNE	NE	ENE	ENE	E	E	ESE	SE	SE	SE	ESE	ESE	ESE	ESE	ESE	
75/76	5	5	5	6	9	11	13	15	14	14	12	11	10	9	8	8	6	4	4	4	5	7	8	8	8	9	10	13	15	15	17	17	17	17	16	16
	7	7	8	9	12	14	16	16	16	16	14	12	11	11	10	9	7	5	4	4	6	8	8	10	11	12	14	16	18	19	20	20	19	18	18	
	NW	SW	SSE	SSE	SSE	SSE	SSE	S	S	S	S	S	S	S	S	S	S	W	NW	NNE	NNE	NE	ENE	ENE	ENE	E	SE	SE	SE	SE	ESE	ESE	ESE	ESE	E	
63/64	5	4	5	6	9	11	13	15	15	13	12	11	10	9	8	8	6	4	3	4	6	8	8	8	8	9	10	13	15	16	17	18	17	17	17	
	7	7	7	9	12	14	15	16	16	15	13	12	11	10	9	9	7	5	4	4	6	8	9	10	11	12	14	16	18	19	20	20	19	19	19	
	NW	S	SE	SSE	SSE	SSE	S	S	S	S	S	S	S	S	S	S	S	SW	SSW	NNE	NNE	NE	NE	NE	ENE	ESE	SE	ESE	SE	ESE	ESE	ESE	ESE	E	E	
51/52	5	4	4	6	8	11	13	14	14	14	13	11	10	10	9	8	7	6	4	3	3	5	8	8	8	9	10	11	13	15	15	16	17	17	17	17
	7	6	7	8	11	13	15	16	16	14	12	11	11	10	9	8	6	4	3	4	6	8	9	10	11	12	14	16	18	19	20	19	19	18	19	
	NW	SW	SE	SSE	SSE	S	S	S	S	S	S	S	S	S	S	S	S	SSW	NE	NNE	NNE	NE	NE	NE	E	ESE	ESE	ESE	ESE	ESE	ESE	ESE	ESE	ESE	E	
37/38	5	4	4	5	8	11	12	13	13	12	10	9	9	8	8	7	5	3	2	3	5	7	8	9	9	11	12	14	14	14	15	16	16	16	16	17
	7	6	7	8	10	12	14	14	14	13	11	10	10	10	9	8	6	4	3	3	6	8	9	10	12	13	15	16	17	18	18	19	19	18	19	
	NW	SSW	SE	SSE	S	S	S	S	S	S	S	S	S	S	S	S	S	SSE	NNE	NNE	NNE	NE	NE	ENE	E	ESE	ESE	ESE	ESE	ESE	ESE	ESE	ESE	E	E	
25/26	5	4	4	5	8	10	11	11	11	10	8	8	8	7	7	6	4	3	2	3	4	7	8	9	10	11	13	13	14	13	14	15	14	15	16	
	7	6	6	7	10	12	13	13	13	12	10	9	9	8	7	6	4	3	3	3	5	7	9	10	12	13	15	16	17	17	18	18	18	18	19	
	NW	SW	SSE	SSE	S	S	S	S	S	S	S	S	S	S	S	SSE	SSE	SSE	ESE	NNE	NNE	NNE	NE	NE	ENE	E	E	ESE	ESE	ESE	ESE	ESE	ESE	ESE	E	
11/12	5	4	4	6	8	10	10	11	11	10	8	8	8	8	7	6	5	3	2	3	5	7	8	9	10	12	13	13	13	13	13	14	15	14	15	16
	7	6	6	8	10	12	12	13	13	12	10	10	9	9	8	7	6	4	3	4	5	8	9	10	12	13	15	16	16	17	18	18	18	18	19	
	NW	NW	S	S	S	S	S	S	S	S	S	S	S	S	SSE	SSE	SSE	SSE	E	NNE	NNE	NNE	NE	NE	ENE	E	E	E	ESE	ESE	ESE	ESE	ESE	ESE	E	
1 & 2 Bravo	6	4	4	6	8	10	11	12	12	11	10	9	9	9	8	7	6	3	3	4	7	9	9	11	12	14	15	14	14	14	15	16	17	17	18	19
	8	6	6	7	9	11	12	13	13	12	11	11	10	10	9	8	6	4	4	5	7	9	10	12	13	15	16	16	16	17	19	19	19	20	21	
	NW	NW	SSW	S	S	S	S	S	S	S	S	S	S	SSE	SSE	SSE	SSE	SE	E	NE	NNE	NE	NE	NE	ENE	ENE	E	E	ESE	ESE	ESE	ESE	ESE	ESE	E	

NOTE: This is automated data that may/may not agree with the official BAM thinking that's found on the daily slides.
This data should be used as a guide only

Houston Pilots: Sun. 8/20/2023

Forecast Discussion

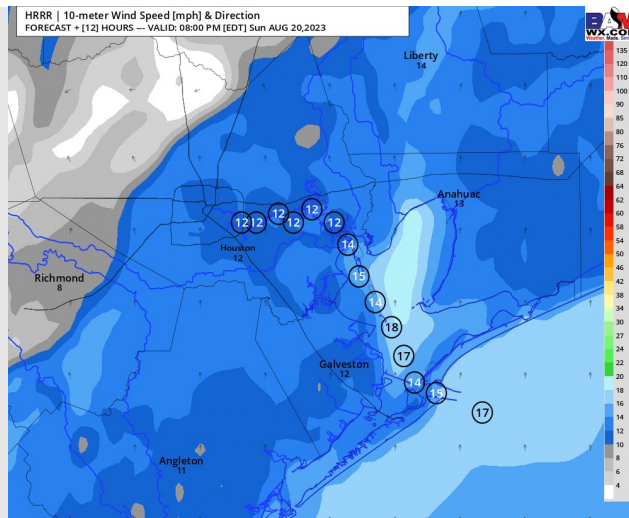
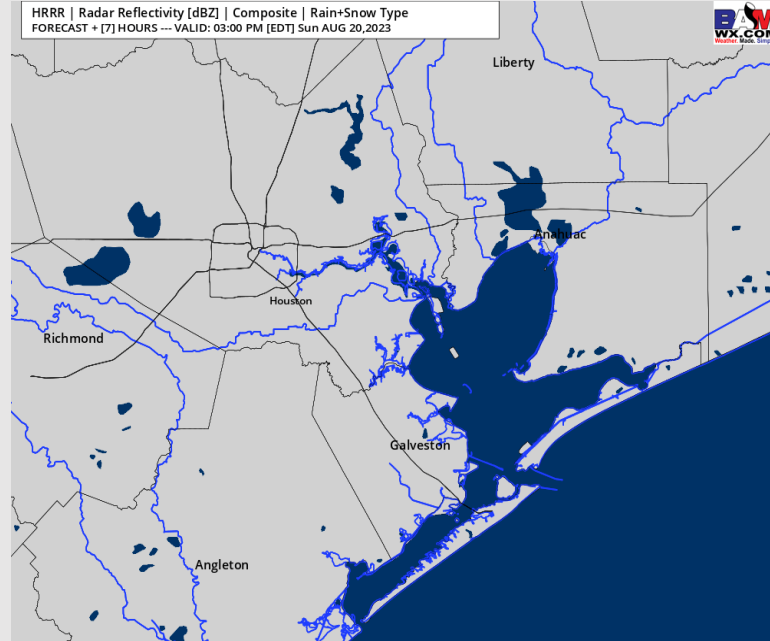
Precip: Dry weather is favored throughout the rest of the day.

Wind: Winds will continue out of the NW before becoming variable by 1 PM. After 3 PM, winds will be out of the S/SW the rest of the day. **N of Morgan's Point:** 3-8 kts until 4 PM, increasing to 7-12 kts for the remainder of the evening. **S of Morgan's Point:** 5-10 kts through 3 PM. After 3 PM, winds increase to 13-18 kts remainder of the day.

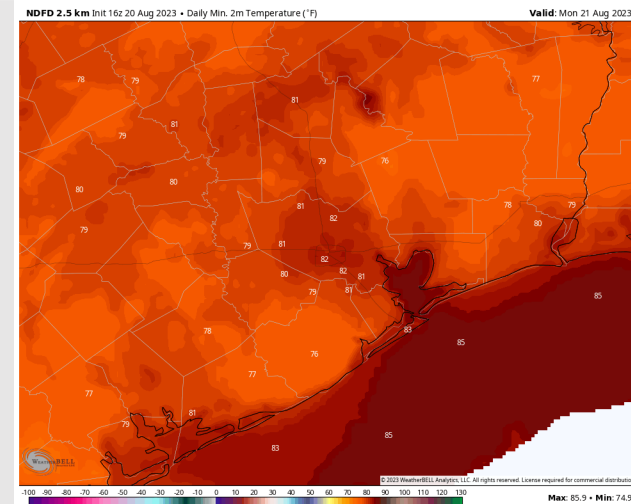
Low Temps: **S of Morgan's Point:** Mid 80s F. **N of Morgan's Point:** Low 80s F.

Visibility: Not anticipating any visibility concerns.

Precip Image: 2 PM CT



Wind Speed:
7 PM CT



Low Temps
Monday

Houston Pilots: Mon. 8/21/2023

Forecast Discussion

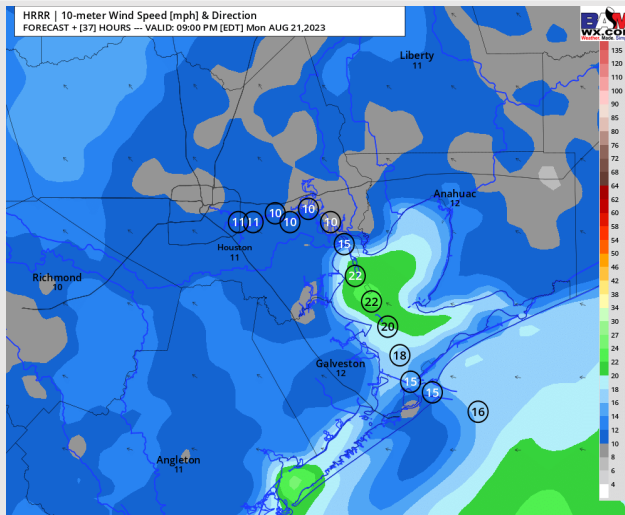
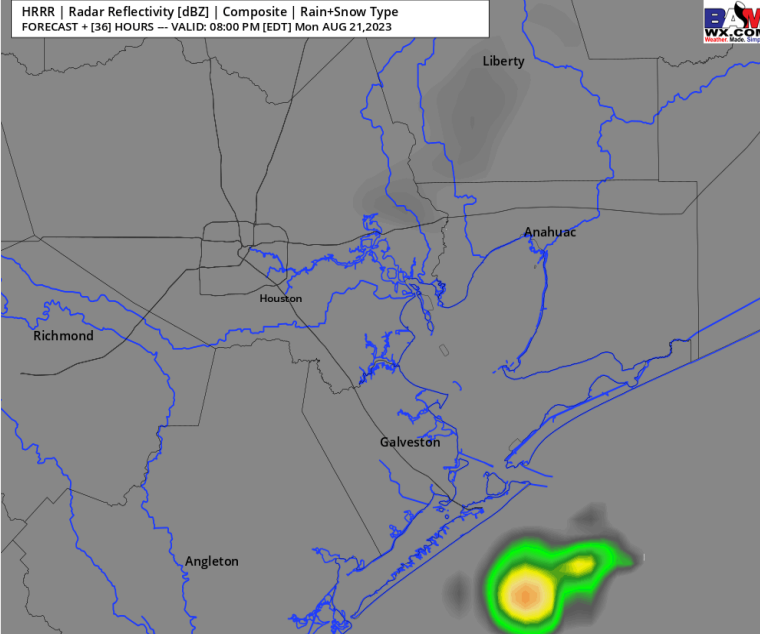
Precip: 30-40% chance for showers for all stations from 2PM through the evening hours.

Wind: Winds will start out of the SW before veering to being out of the E/SE for all stations by 1 PM. **N of Morgan's Point:** 2-7 kts through 1 PM, increasing to 8-13 kts for the remainder of the day. **S of Morgan's Point:** 8-13 kts through 4 AM before decreasing to 2-7 kts through 12 PM. Winds then steadily increasing to 15-22 kts by 4 PM and remaining at that clip for the rest of the evening (**gusts 22-27 kts S of Morgan's Point after 7 PM possible**). For additional details on tropical system, see tropical slide.

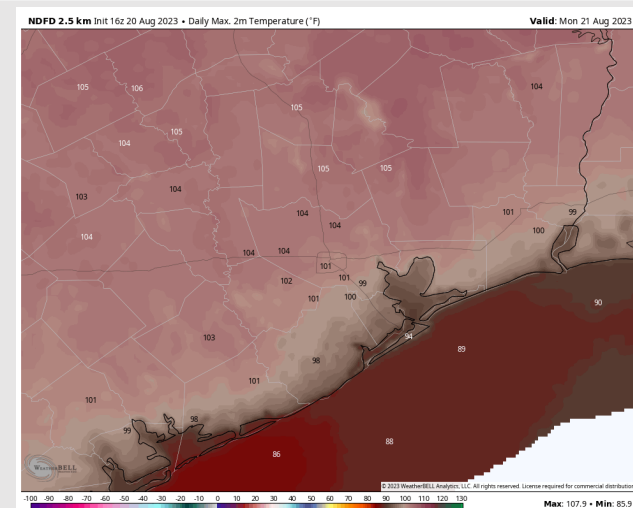
High Temps: **S of Morgan's Point:** Low/mid 90s. **N of Morgan's Point:** Upper 90s/low 100s F.

Visibility: No visibility issues.

Precip Image: 7 PM CT



Wind Speed:
8 PM CT



High Temps
Monday

Forecast Discussion

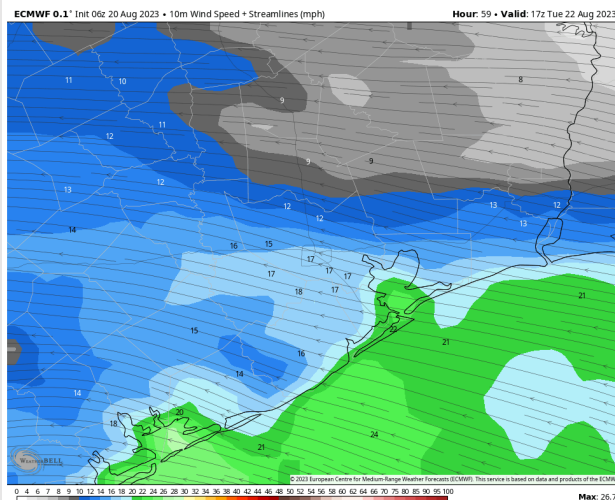
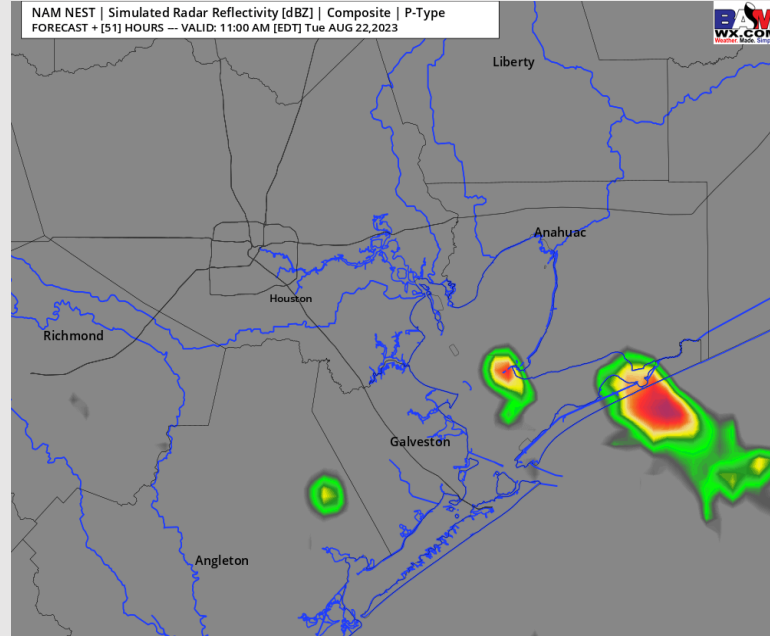
Precip: Several scattered bands of heavy rain/storms will be possible, beginning as early as 4AM-CT, with the greatest potential for storms for late morning/early afternoon. While system has continued to trend south, rain/storm risks will be favored especially for stations **S of Morgan's Point**.

Wind: Winds will be out of the E/SE throughout the entire day on TUE. **N of Morgan's Point:** 7-12 kts through 12 PM, then increasing to 12-17kts through 8 PM. After 8 PM, winds decrease to 6-11 kts rest of the day. **S of Morgan's Point:** 17-22kts through 12 PM before decreasing to 15-20kts through 8 PM. After 8 PM, winds decrease again to 8-13 kts (**gusts 25-30 kts at all stations until 6 PM**). For additional details on tropical system, see tropical slide.

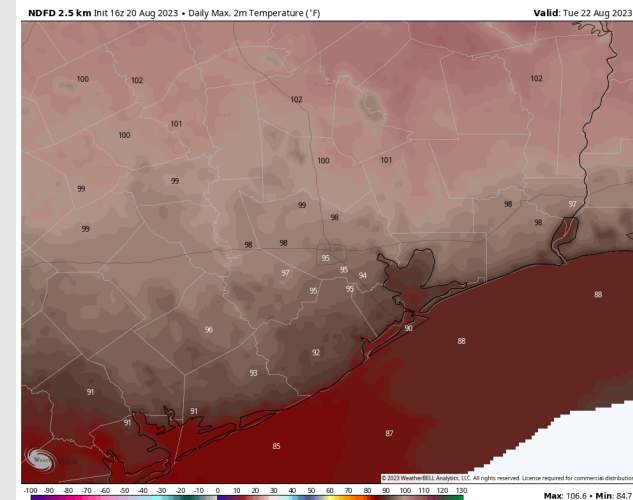
High Temps: **S of Morgan's Point:** Upper 80s / Low 90s F. **N of Morgan's Point:** Mid 90s F.

Visibility: Brief Periods of reduced visibility near the Boarding Station associated with heaviest downpours.

Precip Image: 12 PM CT



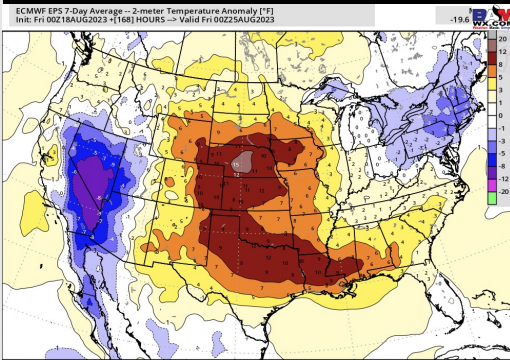
Wind Speed:
12 PM CT



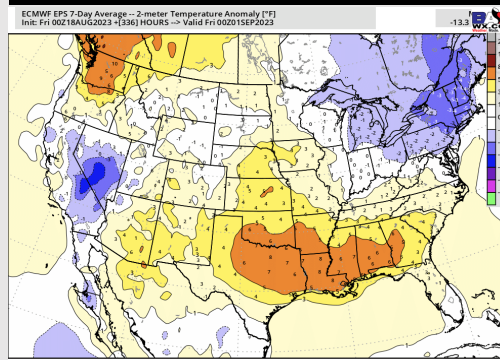
High Temps
Tuesday

Houston Pilots: 8/20/23

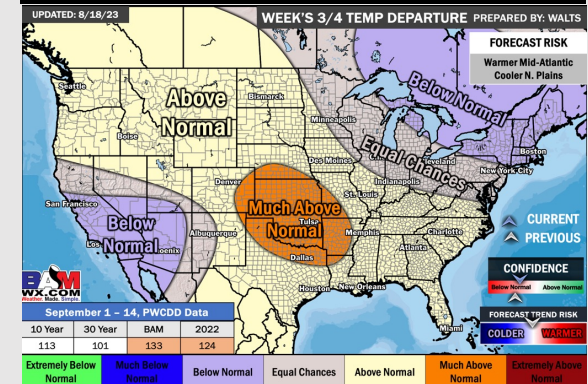
Next 7 Day Temperature Departure



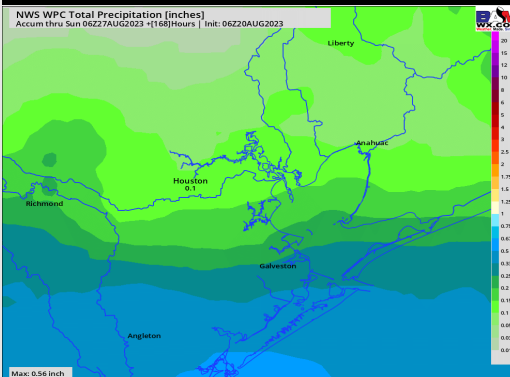
8-14 Day Temperature Departure



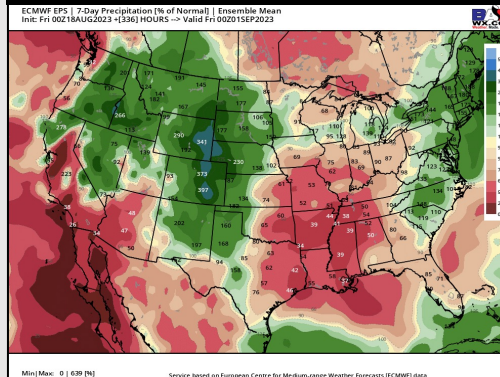
15-30 Day Temperature Departure



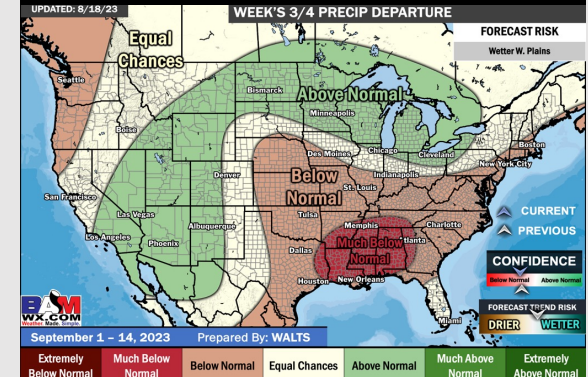
Next 7 Day Total Precipitation



8-14 Day % of Average Precip.



15-30 Day % of Average Precip.



- Tuesday will be the “best” precip chance over the next several days with most of the next several days staying dry. Heavy rain looks to be possible with Tuesday’s wave of activity, with better chances S of Morgan’s Point.
- Expecting below normal precipitation chances and above normal temperatures for the week 2 timeframe.
- Above normal temperatures and below normal chances for precipitation are favored in the weeks $\frac{3}{4}$ timeframe.