

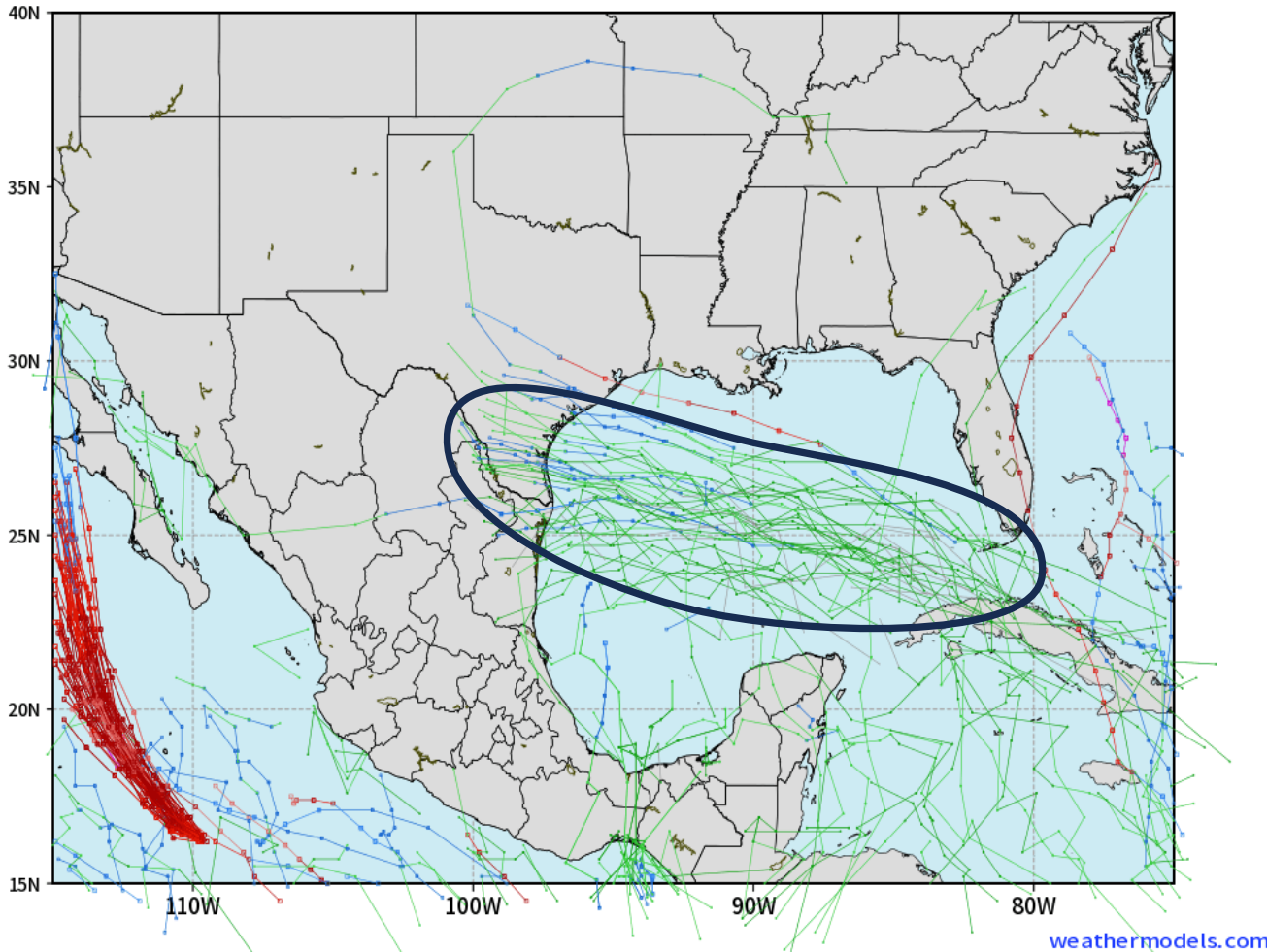


# Houston Pilots Tropical Update

## European Low Pressure Tracks Next 10-Days

ECMWF GULF EPS Cyclone Locations --> Next [10-days]  
INIT: 00Z18AUG2023 --> UNTIL 00Z28AUG2023

o-o ENSEMBLE MEAN  
o-o 1000 - 1010 hPa  
o-o 980 - 999 hPa  
o-o 960 - 979 hPa  
o-o 950 - 959 hPa  
o-o < 950 hPa



Data is still suggestive of a loosely organized round of precip / increased winds developing in the Eastern Gulf over the coming days and moving west toward the Western Gulf on ~Tuesday.

Latest thinking is for the bulk of this system to move through S TX, with the Houston area seeing the N fringes of this system.

It is worth noting that data has been steadily trending further south of the HOU area with estimated storm tracks

Right now, we are not in favor of this pocket of energy reaching hurricane status, with low confidence of it reaching Tropical Storm status.

Regardless, at this distance Tuesday does hold the potential for rain and sustained winds ~20-30 kts at the boarding (specifics to be ironed out).

# Houston Pilots Visibility Chart (miles)



## Forecast Confidence



Time	Fri 11am	Fri 12pm	Fri 1pm	Fri 2pm	Fri 3pm	Fri 4pm	Fri 5pm	Fri 6pm	Fri 7pm	Fri 8pm	Fri 9pm	Fri 10pm	Fri 11pm	Sat 12am	Sat 1am	Sat 2am	Sat 3am	Sat 4am	Sat 5am	Sat 6am	Sat 7am	Sat 8am	Sat 9am	Sat 10am	Sat 11am	Sat 12pm	Sat 1pm	Sat 2pm	Sat 3pm	Sat 4pm	Sat 5pm	Sat 6pm	Sat 7pm	Sat 8pm	Sat 9pm	Sat 10pm	
610 Bridge	10	10	10	10	10	10	10	10	10	10	10	10	10	10	10	10	10	10	10	10	6	6	10	10	10	10	10	10	10	10	10	10	10	10	10	10	10
Kinder 1	10	10	10	10	10	10	10	10	10	10	10	10	10	10	10	10	10	10	10	10	7	7	10	10	10	10	10	10	10	10	10	10	10	10	10	10	10
Greens Bayou	10	10	10	10	10	10	10	10	10	10	10	10	10	10	10	10	10	10	10	10	8	8	10	10	10	10	10	10	10	10	10	10	10	10	10	10	10
Shell Crude	10	10	10	10	10	10	10	10	10	10	10	10	10	10	10	10	10	10	10	10	8	8	10	10	10	10	10	10	10	10	10	10	10	10	10	10	10
Lynchburg Ferries	10	10	10	10	10	10	10	10	10	10	10	10	10	10	10	10	10	10	10	10	8	9	10	10	10	10	10	10	10	10	10	10	10	10	10	10	10
Exxon 3	10	10	10	10	10	10	10	10	10	10	10	10	10	10	10	10	10	10	10	10	8	10	10	10	10	10	10	10	10	10	10	10	10	10	10	10	10
Morgans Point	10	10	10	10	10	10	10	10	10	10	10	10	10	10	10	10	10	10	10	10	10	10	10	10	10	10	10	10	10	10	10	10	10	10	10	10	10
75/76	10	10	10	10	10	10	10	10	10	10	10	10	10	10	10	10	10	10	10	10	10	10	10	10	10	10	10	10	10	10	10	10	10	10	10	10	10
63/64	10	10	10	10	10	10	10	10	10	10	10	10	10	10	10	10	10	10	10	10	10	10	10	10	10	10	10	10	10	10	10	10	10	10	10	10	10
51/52	10	10	10	10	10	10	10	10	10	10	10	10	10	10	10	10	10	10	10	10	10	10	10	10	10	10	10	10	10	10	10	10	10	10	10	10	10
37/38	10	10	10	10	10	10	10	10	10	10	10	10	10	10	10	10	10	10	10	10	10	10	10	10	10	10	10	10	10	10	10	10	10	10	10	10	10
25/26	10	10	10	10	10	10	10	10	10	10	10	10	10	10	10	10	10	10	10	10	10	10	10	10	10	10	10	10	10	10	10	10	10	10	10	10	10
11/12	10	10	10	10	10	10	10	10	10	10	10	10	10	10	10	10	10	10	10	10	10	10	10	10	10	10	10	10	10	10	10	10	10	10	10	10	10
1 & 2 Bravo	10	10	10	10	10	10	10	10	10	10	10	10	10	10	10	10	10	10	10	10	10	10	10	10	10	10	10	10	10	10	10	10	10	10	10	10	10

**NOTE: This is automated data that may/may not agree with the official BAM thinking that's found on the daily slides or special visibility report slides. This data should be used as a guide only**

# Houston Pilots Wind Chart



## Forecast Confidence



Sustained wind 13 Knots  
Gusts 18 Knots  
Wind from the N

## Example

WS: 13  
G:18  
N

Time Knots	Fri 11am	Fri 12pm	Fri 1pm	Fri 2pm	Fri 3pm	Fri 4pm	Fri 5pm	Fri 6pm	Fri 7pm	Fri 8pm	Fri 9pm	Fri 10pm	Fri 11pm	Sat 12am	Sat 1am	Sat 2am	Sat 3am	Sat 4am	Sat 5am	Sat 6am	Sat 7am	Sat 8am	Sat 9am	Sat 10am	Sat 11am	Sat 12pm	Sat 1pm	Sat 2pm	Sat 3pm	Sat 4pm	Sat 5pm	Sat 6pm	Sat 7pm	Sat 8pm	Sat 9pm	Sat 10pm	
610 Bridge	4	4	3	4	5	6	8	9	10	9	8	8	7	6	6	5	4	4	4	3	3	4	4	5	4	3	3	4	5	6	7	9	9	9	8	7	
Kinder 1	WSW	SW	S	SSE	SSE	SE	SE	SE	SE	S	S	S	SSW	SSW	SSW	SSW	SW	SW	SW	SW	SW	WSW	WSW	WSW	WSW	WSW	S	SSE	SE	SE	SE	SE	SE	SE	S	S	
	4	4	3	4	6	7	8	9	10	9	8	8	7	6	6	5	4	4	4	3	3	4	4	5	4	3	3	4	5	6	8	9	9	8	8	7	
Greens Bayou	WSW	SW	S	SSE	SE	SE	SSE	SSE	SSE	S	S	S	SSW	SSW	SSW	SSW	SW	SW	SW	SW	WSW	WSW	WSW	WSW	WSW	WSW	S	SSE	SE	SE	SE	SE	SE	SSE	SSE	S	S
	4	4	3	5	7	8	9	10	10	9	8	8	7	6	6	5	4	4	4	3	3	4	5	5	4	3	3	4	6	7	8	9	9	8	8	7	
Shell Crude	WSW	SSW	S	SSE	SE	SE	SSE	SSE	SSE	S	S	S	SSW	SSW	SSW	SW	SW	SW	SW	WSW	WSW	WSW	WSW	WSW	WSW	WSW	S	SSE	SE	SE	SE	SE	SE	SSE	SSE	S	S
	4	4	4	5	8	9	10	11	10	9	9	8	7	6	6	5	5	5	4	4	4	4	4	5	5	4	4	3	5	7	8	10	10	10	9	8	8
Lynchburg Ferries	WSW	SSW	S	SSE	SE	SE	SSE	SSE	SSE	S	S	S	SSW	SSW	SSW	SSW	SW	SW	SW	WSW	WSW	WSW	WSW	WSW	WSW	WSW	S	SSE	SE	SE	SE	SE	SE	SSE	SSE	S	S
	4	4	5	7	9	10	11	12	11	10	9	8	7	6	7	6	5	4	4	4	4	4	4	5	5	4	4	4	6	8	9	10	11	11	9	9	8
Exxon 3	WSW	SSW	S	SSE	SE	SE	SSE	SSE	SSE	S	S	S	SSW	SSW	SSW	SSW	SW	SW	SW	WSW	WSW	WSW	WSW	WSW	WSW	WSW	S	SSE	SE	SE	SE	SE	SE	SSE	SSE	S	S
	5	5	6	8	10	11	13	13	13	12	11	10	9	8	8	8	7	6	6	6	6	6	7	7	6	6	6	6	8	10	11	13	13	13	13	12	11
Morgans Point	WSW	S	SSE	SSE	SSE	SSE	SSE	SSE	S	S	S	S	SSW	SSW	SSW	SSW	SW	SW	SW	WSW	WSW	WSW	WSW	WSW	WSW	WSW	SSE	SSE	SE	SE	SE	SE	SE	SSE	SSE	S	S
	4	4	5	8	11	13	14	15	15	14	13	12	11	10	10	10	10	10	9	8	8	8	8	7	6	5	4	5	7	9	10	12	12	12	11	10	9
75/76	WSW	SE	SE	SE	SSE	SSE	SSE	S	S	S	S	SSW	SSW	SSW	SSW	SW	SW	SW	WSW	WSW	WSW	W	W	W	W	W	SE	ESE	SE	SSE	SSE	SSE	SSE	S	S	S	
	4	4	5	7	10	12	13	14	14	13	12	11	11	10	10	9	9	8	8	8	8	7	7	7	6	4	4	5	7	8	10	11	13	13	13	11	11
63/64	WSW	SE	SE	SE	SSE	SSE	SSE	S	S	S	S	SSW	SSW	SSW	SSW	SW	SW	SW	WSW	WSW	WSW	W	W	W	W	SE	ESE	SE	SSE	SSE	SSE	SSE	S	S	S		
	4	4	5	7	10	12	13	14	14	13	12	11	11	10	10	9	9	8	8	8	8	7	7	7	6	4	4	5	7	8	10	11	13	13	13	11	11
51/52	WSW	SE	SE	SE	SSE	SSE	SSE	S	S	S	S	SSW	SSW	SSW	SSW	SW	SW	SW	WSW	WSW	WSW	W	W	W	W	SE	ESE	SE	SSE	SSE	SSE	SSE	S	S	S		
	4	4	5	7	9	10	11	12	12	12	10	10	10	10	10	9	8	8	7	7	7	7	7	6	5	4	5	6	8	9	10	11	12	11	10	9	
37/38	WSW	SSE	SE	SSE	SSE	S	S	S	S	S	S	SSW	SSW	SSW	SSW	SW	SW	SW	WSW	WSW	WSW	W	W	W	W	SSE	ESE	SE	SSE	SSE	SSE	SSE	S	S	S		
	4	5	6	7	8	9	10	10	10	9	9	9	9	9	8	8	7	7	7	6	6	6	6	6	6	5	4	5	6	8	9	10	10	10	9	8	8
25/26	SW	S	SSE	SSE	S	S	S	S	S	S	S	SSW	SSW	SSW	SSW	SSW	SW	SW	SW	WSW	WSW	WSW	W	W	W	WSW	S	SE	SSE	SSE	SSE	S	S	S	S		
	5	5	6	7	8	9	9	10	10	9	9	9	9	9	8	8	8	8	7	7	6	6	6	6	6	5	4	5	6	8	9	10	10	10	9	8	
11/12	WSW	SSW	SSE	SSE	S	S	S	S	S	S	S	SSW	SSW	SSW	SSW	SSW	SW	SW	SW	WSW	WSW	W	W	W	W	WSW	SSW	SSE	SSE	SSE	SSE	S	S	S	S		
	5	4	4	5	7	8	9	10	10	10	10	10	10	11	11	10	10	10	9	9	9	8	8	7	6	4	4	5	6	7	8	9	10	10	10	9	9
1 & 2 Bravo	WSW	SW	SSW	S	S	S	S	S	S	S	S	SSW	SSW	SSW	SSW	SSW	SW	SW	SW	WSW	WSW	WSW	W	W	W	W	WSW	S	S	S	S	S	S	S	S		
	6	5	5	6	8	9	10	11	11	11	11	11	11	11	11	11	11	11	11	10	9	9	9	8	8	7	6	6	8	9	10	11	11	11	11	11	

**NOTE: This is automated data that may/may not agree with the official BAM thinking that's found on the daily sites. This data should be used as a guide only**

# Houston Pilots: Fri. 8/18/2023



## Forecast Discussion

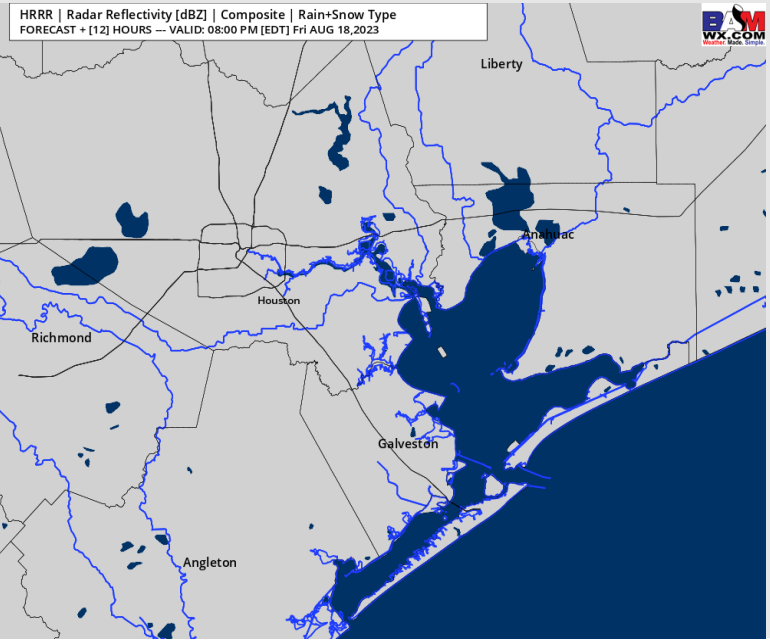
**Precip:** Dry conditions today.

**Wind:** Winds will be out of the SW/SSW for all stations throughout the day. **N of Morgan's Point:** 3-8 kts through 3 PM, increasing to 6-11 kts for the remainder of the day. **S of Morgan's Point:** 3-8 kts through 3 PM, increasing to 12-17 kts for the rest of the evening (gusts 15-20 kts at the boarding station possible).

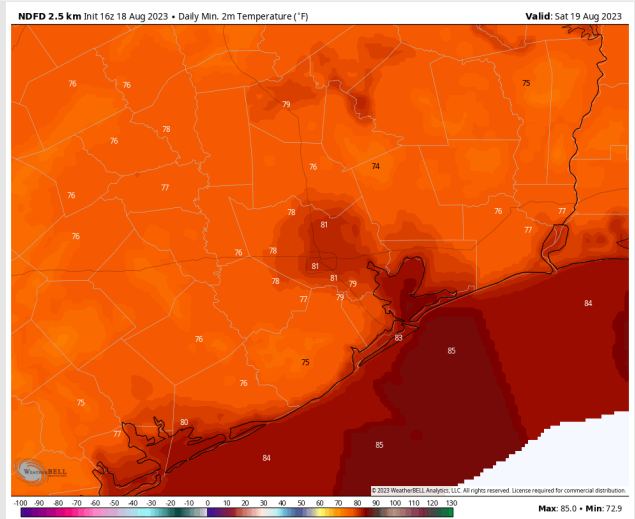
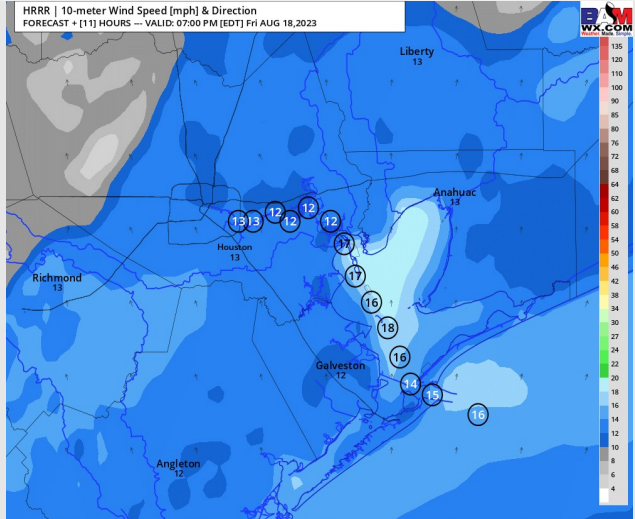
**Low Temps:** **S of Morgan's Point:** Low/mid 80s. **N of Morgan's Point:** Upper 70s/near 80 F.

**Visibility:** No visibility issues.

## Precip Image: 7 PM CT



Wind Speed:  
6 PM CT



Low Temps  
SAT AM

# Houston Pilots: Sat. 8/19/2023



## Forecast Discussion

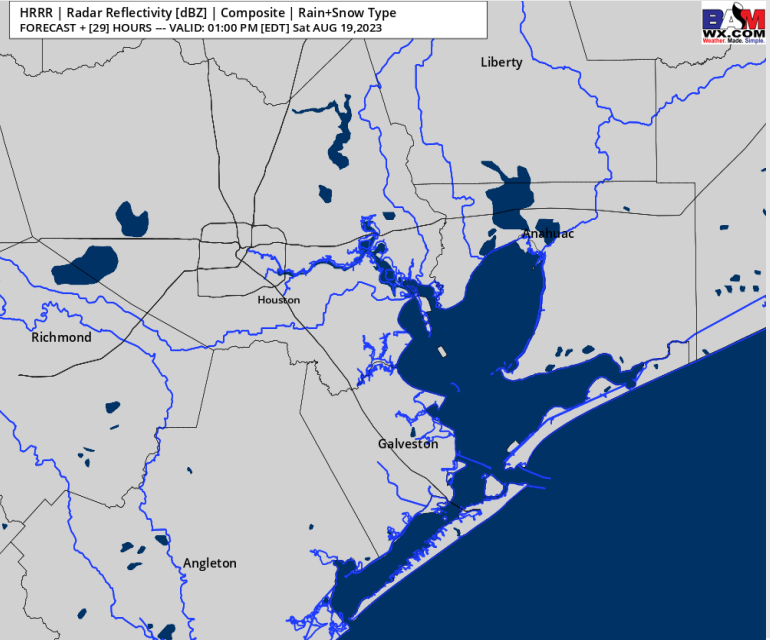
**Precip:** Saturday is expected to stay dry.

**Wind:** Winds will be out of the SW through the AM before turning more out of the S after 1 PM. **N of Morgan's Point:** 3-8 kts through 5 PM before increasing to 5- 10 kts the rest of the day. **S of Morgan's Point:** 10-15 kts through 10 AM. After this time, winds will decrease to 4-9 kts through 3 PM, before increasing to 12-17 kts for the rest of the evening (gusts 15-20 kts possible at the boarding station).

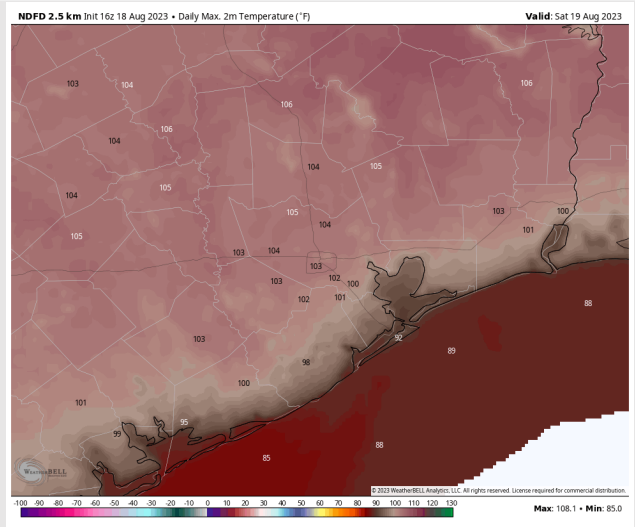
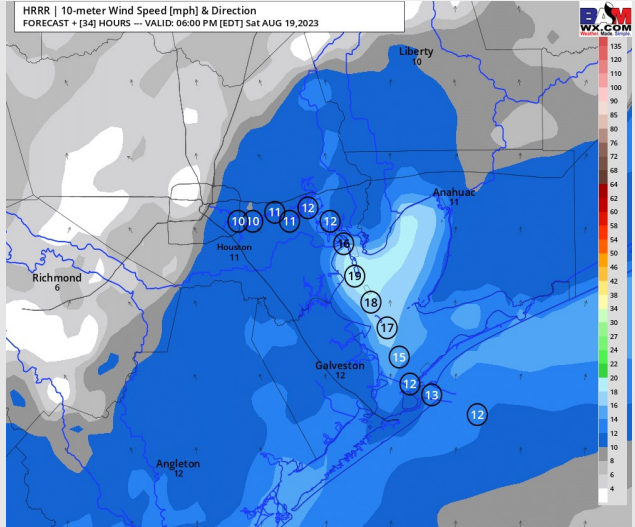
**High Temps:** **S of Morgan's Point:** Low/mid 90s F. **N of Morgan's Point:** Upper 90s/low 100s F.

**Visibility:** Not visibility concerns.

## Precip Image: 12 PM CT



Wind Speed:  
5 PM CT



High Temps  
Saturday

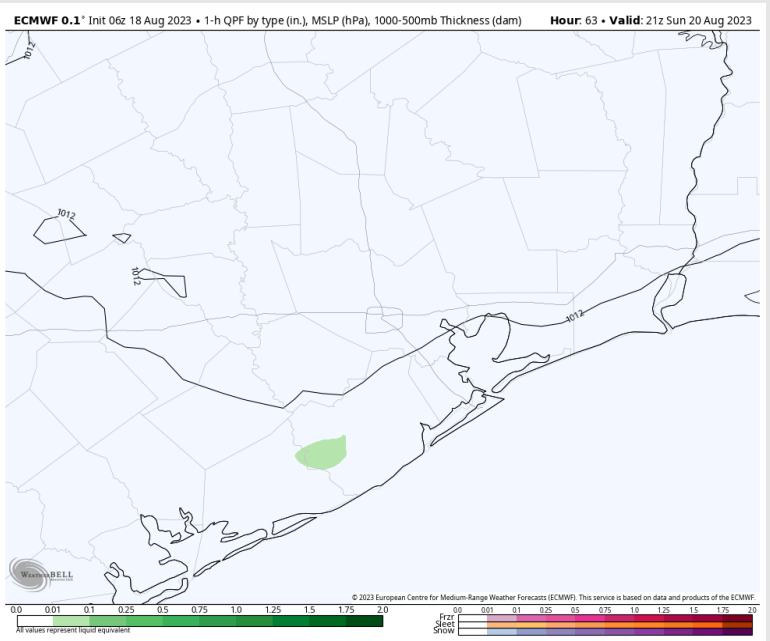
# Houston Pilots: Sun. 8/20/2023



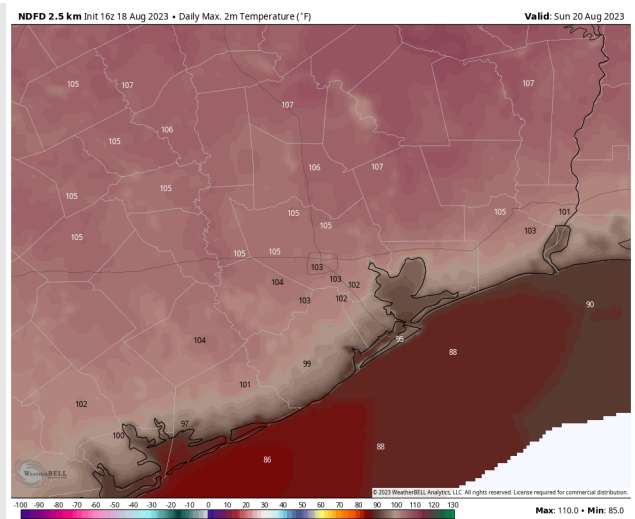
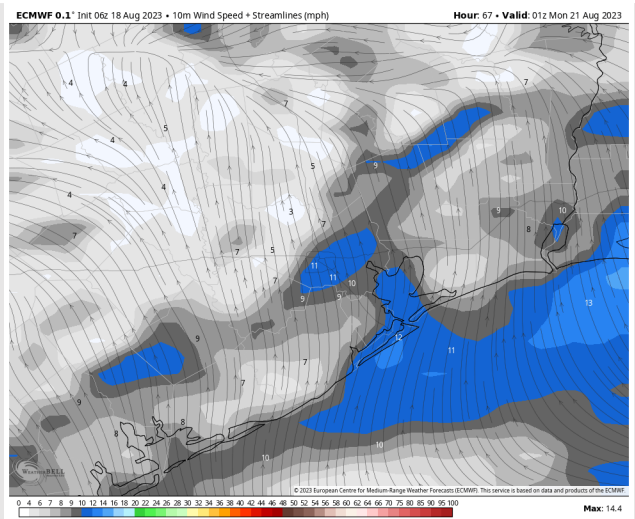
## Forecast Discussion

- Precip:** Dry weather favored (isolated 10% chance between 3-5 PM).
- Wind:** Winds transition from out of the SW to NW throughout the morning SUN before becoming variable by noon. After 3 PM, winds will be out of the SW the rest of the day. **N of Morgan's Point:** 3-8 kts until 6 PM, increasing to 5-10 kts for the remainder of the evening. **S of Morgan's Point:** 12-17 kts until 6 AM, then decreasing to 6-11 kts through 6 PM. After 6 PM, winds increase to 10-15 kts remainder of the day.
- High Temps:** **S of Morgan's Point:** Low/mid 90s F. **N of Morgan's Point:** Upper 90s/low 100s F.
- Visibility:** Not anticipating any visibility concerns.

## Precip Image: 4 PM CT

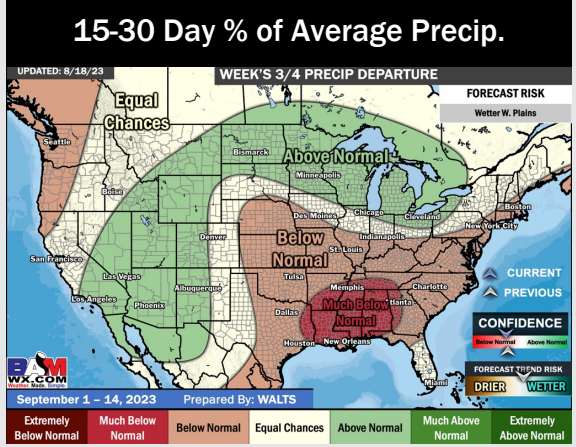
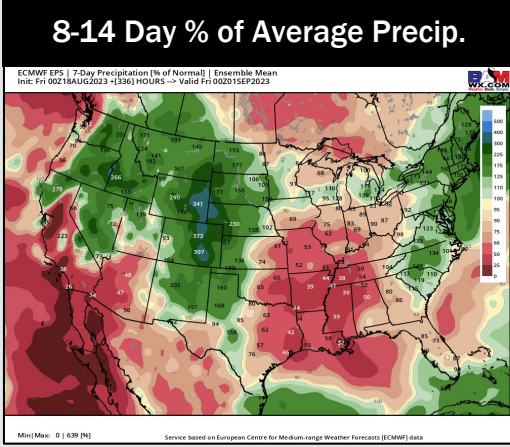
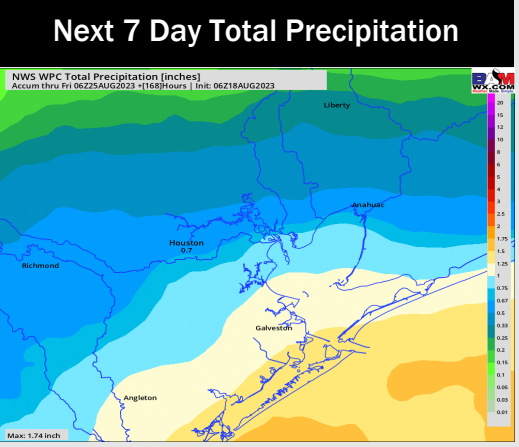
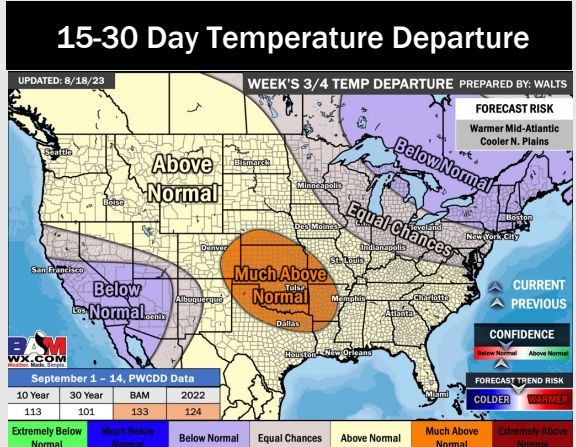
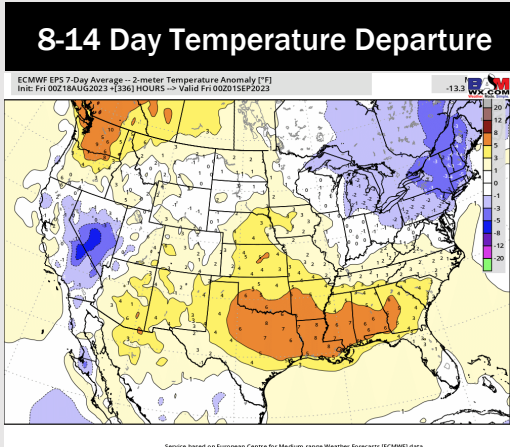
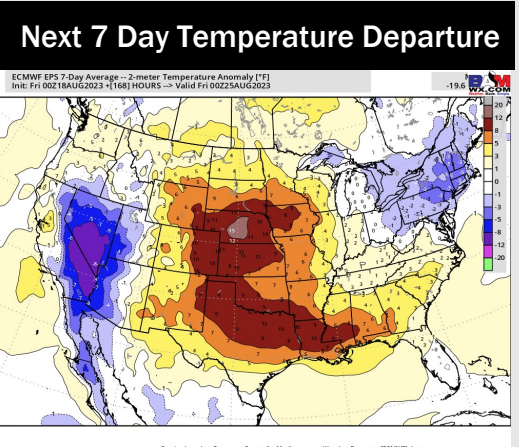


Wind Speed:  
8 PM CT



High Temps  
Sunday

# Houston Pilots: 8/18/23



- Next Tuesday will be the “best” precip chance over the next several days with most of the next several days staying dry. Heavy rain looks to be possible with Tuesday’s wave of activity pending track of the system.
- Expecting below normal precipitation chances and above normal temperatures for the week 2 timeframe.
- Above normal temperatures and below normal chances for precipitation are favored in the weeks ¾ timeframe.