

Houston Pilots Forecast Package



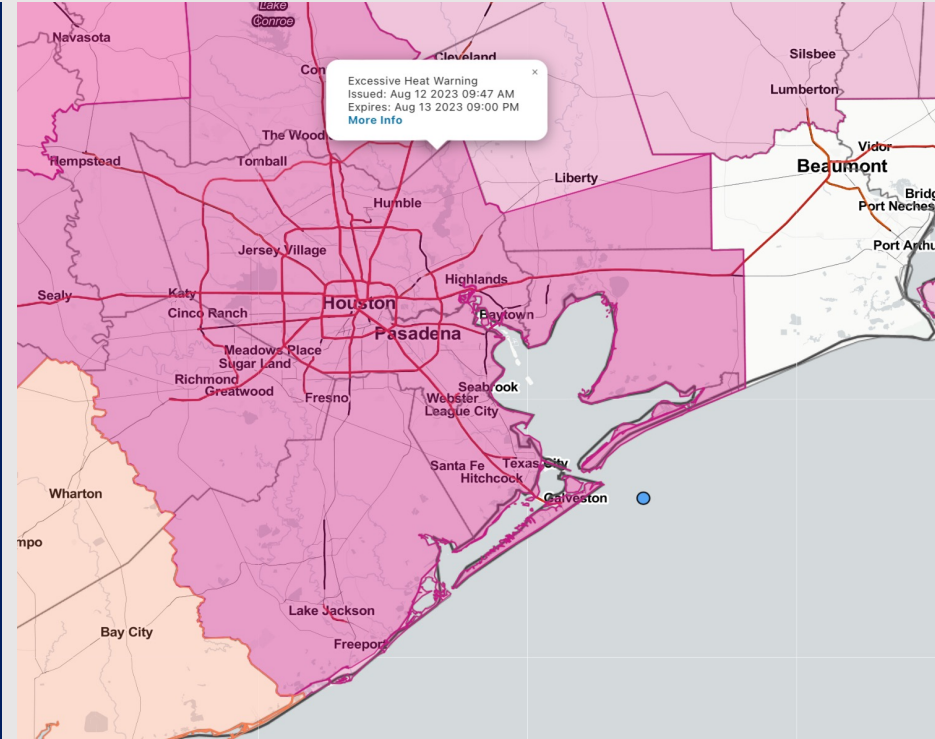
Updated: 12:40 PM CT

Saturday, August 12, 2023

Forecaster: Tyler Riggles

Weather Headlines

- Dry conditions are favored for the weekend.
- Excessive heat concerns (90+ F) to continue throughout at least next week.
- No active tropical threats to SE TX for next 7-10 days.
- Watching for some minor chances for precipitation next week beginning Monday



Radar/NWS Alerts: 12:40 PM CT



As always, please do not hesitate to reach out to us with any forecast questions via the chat option on the Weather Porthole or our on-call number, **(317)-560-8122** press 1 for forecast questions.

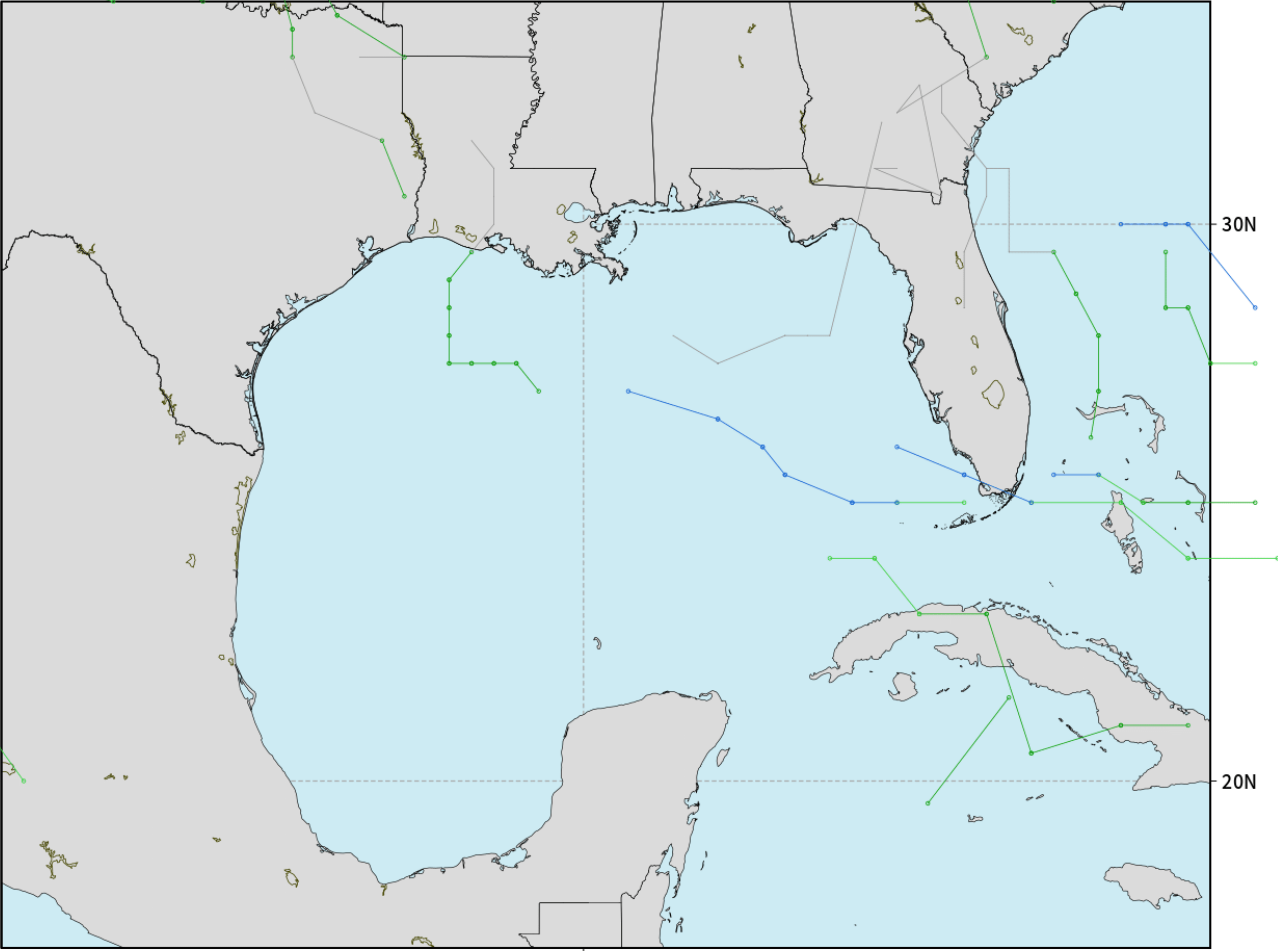
Houston Pilots Tropical Update



American Model Low Pressure Tracks Next 10-Days

NOAA GEFSv12 | All Ensemble Cyclones +240 Hours
INIT: 06Z12AUG2023 --> UNTIL 06Z22AUG2023

o-o > 1010 hPa
o-o 1000 - 1010 hPa
o-o 980 - 999 hPa
o-o 960 - 979 hPa
o-o 950 - 959 hPa
o-o < 950 hPa



No tropical activity anticipated over the next 10 days for SE TX.

No other areas of interest being noted across the Gulf of Mexico / Western Atlantic

Houston Pilots Visibility Chart (miles)



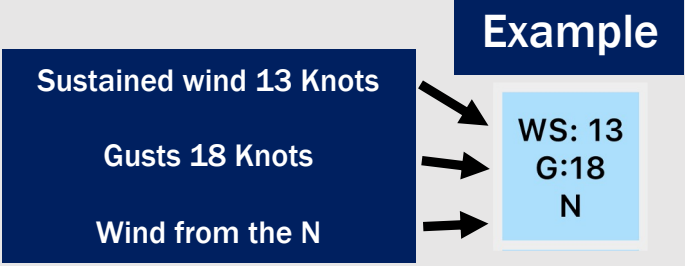
Forecast Confidence



Time	Sat 12pm	Sat 1pm	Sat 2pm	Sat 3pm	Sat 4pm	Sat 5pm	Sat 6pm	Sat 7pm	Sat 8pm	Sat 9pm	Sat 10pm	Sat 11pm	Sun 12am	Sun 1am	Sun 2am	Sun 3am	Sun 4am	Sun 5am	Sun 6am	Sun 7am	Sun 8am	Sun 9am	Sun 10am	Sun 11am	Sun 12pm	Sun 1pm	Sun 2pm	Sun 3pm	Sun 4pm	Sun 5pm	Sun 6pm	Sun 7pm	Sun 8pm	Sun 9pm	Sun 10pm	Sun 11pm		
610 Bridge	10	10	10	10	10	10	10	10	10	10	10	10	10	10	10	10	10	10	7	5	5	10	10	10	10	10	10	10	10	10	10	10	10	10	10	10	10	
Kinder 1	10	10	10	10	10	10	10	10	10	10	10	10	10	10	10	10	10	10	8	7	7	10	10	10	10	10	10	10	10	10	10	10	10	10	10	10	10	
Greens Bayou	10	10	10	10	10	10	10	10	10	10	10	10	10	10	10	10	10	10	10	9	9	10	10	10	10	10	10	10	10	10	10	10	10	10	10	10	10	
Shell Crude	10	10	10	10	10	10	10	10	10	10	10	10	10	10	10	10	10	10	10	10	10	10	10	10	10	10	10	10	10	10	10	10	10	10	10	10	10	
Lynchburg Ferries	10	10	10	10	10	10	10	10	10	10	10	10	10	10	10	10	10	10	10	10	10	10	10	10	10	10	10	10	10	10	10	10	10	10	10	10	10	
Exxon 3	10	10	10	10	10	10	10	10	10	10	10	10	10	10	10	10	10	10	10	10	10	10	10	10	10	10	10	10	10	10	10	10	10	10	10	10	10	
Morgans Point	10	10	10	10	10	10	10	10	10	10	10	10	10	10	10	10	10	10	10	10	10	10	10	10	10	10	10	10	10	10	10	10	10	10	10	10	10	10
75/76	10	10	10	10	10	10	10	10	10	10	10	10	10	10	10	10	10	10	10	10	10	10	10	10	10	10	10	10	10	10	10	10	10	10	10	10	10	10
63/64	10	10	10	10	10	10	10	10	10	10	10	10	10	10	10	10	10	10	10	10	10	10	10	10	10	10	10	10	10	10	10	10	10	10	10	10	10	10
51/52	10	10	10	10	10	10	10	10	10	10	10	10	10	10	10	10	10	10	10	10	10	10	10	10	10	10	10	10	10	10	10	10	10	10	10	10	10	10
37/38	10	10	10	10	10	10	10	10	10	10	10	10	10	10	10	10	10	10	10	10	10	10	10	10	10	10	10	10	10	10	10	10	10	10	10	10	10	10
25/26	10	10	10	10	10	10	10	10	10	10	10	10	10	10	10	10	10	10	10	10	10	10	10	10	10	10	10	10	10	10	10	10	10	10	10	10	10	10
11/12	10	10	10	10	10	10	10	10	10	10	10	10	10	10	10	10	10	10	10	10	10	10	10	10	10	10	10	10	10	10	10	10	10	10	10	10	10	10
1 & 2 Bravo	10	10	10	10	10	10	10	10	10	10	10	10	10	10	10	10	10	10	10	10	10	10	10	10	10	10	10	10	10	10	10	10	10	10	10	10	10	10

NOTE: This is automated data that may/may not agree with the official BAM thinking that's found on the daily slides or special visibility report slides. This data should be used as a guide only

Houston Pilots Wind Chart



Time Knots	Sat 12pm	Sat 1pm	Sat 2pm	Sat 3pm	Sat 4pm	Sat 5pm	Sat 6pm	Sat 7pm	Sat 8pm	Sat 9pm	Sat 10pm	Sat 11pm	Sun 12am	Sun 1am	Sun 2am	Sun 3am	Sun 4am	Sun 5am	Sun 6am	Sun 7am	Sun 8am	Sun 9am	Sun 10am	Sun 11am	Sun 12pm	Sun 1pm	Sun 2pm	Sun 3pm	Sun 4pm	Sun 5pm	Sun 6pm	Sun 7pm	Sun 8pm	Sun 9pm	Sun 10pm	Sun 11pm	
610 Bridge	7	6	7	7	9	10	12	12	11	10	9	9	8	8	7	6	5	4	4	4	5	6	6	6	6	5	6	7	7	9	11	11	10	9	9	8	
	10	10	10	11	12	15	17	17	17	16	15	13	12	12	11	9	8	7	6	6	7	9	10	9	9	8	9	10	11	13	15	16	16	14	14	12	
Kinder 1	SSW	SSW	S	S	SSE	S	S	S	S	S	S	S	S	S	S	SSW	SSW	SSW	S	SSW	SSW	SSW	SSW	SSW	SSW	S	SSE	SSE	SSE	SSE	SSE	SSE	S	S	S		
	7	6	7	8	9	11	12	12	11	10	9	9	8	8	7	6	5	4	4	4	5	6	7	6	6	5	6	7	8	10	11	11	10	9	9	8	
Greens Bayou	10	9	10	11	12	15	16	17	17	16	15	13	12	12	11	9	8	7	6	6	6	7	9	10	9	8	8	9	10	11	14	15	16	16	14	14	12
	SSW	SSW	S	S	SSE	SSE	SSE	S	S	S	S	S	S	S	S	S	SSW	SSW	SSW	SSW	SSW	SSW	SSW	SSW	SSW	S	SSE	SSE	SE	SSE	SSE	SSE	S	S	S		
Shell Crude	7	6	7	9	10	12	12	12	11	10	9	9	8	7	7	6	5	4	4	4	5	6	7	6	6	5	6	8	9	10	11	11	10	9	9	8	
	SSW	S	SSE	SSE	SSE	SSE	SSE	S	S	S	S	S	S	S	S	SSW	SSW	SSW	SSW	SSW	SSW	SSW	SSW	SSW	S	SSE	SE	SE	SSE	SSE	SSE	S	S	S			
Lynchburg Ferries	7	7	9	11	12	14	14	13	12	11	10	9	8	8	8	7	6	5	4	4	5	6	7	6	6	6	7	10	11	13	13	12	11	10	9	8	
	SSW	S	SSE	SSE	SSE	SSE	SSE	S	S	S	S	S	S	S	S	SSW	SSW	SSW	SSW	SSW	SSW	SSW	SSW	SSW	S	SSE	SE	SE	SSE	SSE	SSE	S	S	S			
Exxon 3	10	10	11	13	15	17	17	18	17	16	15	13	12	12	11	9	8	7	6	6	6	8	9	10	9	8	10	12	14	16	16	16	14	13	12		
	SSW	S	SSE	SSE	SSE	SSE	SSE	S	S	S	S	S	S	S	S	SSW	SSW	SSW	SSW	SSW	SSW	SSW	SSW	SSW	S	SSE	SE	SE	SSE	SSE	SSE	S	S	S			
Morgans Point	8	8	10	12	13	15	14	14	12	12	11	10	9	9	8	7	6	5	5	5	5	6	7	6	6	7	9	10	12	13	13	11	11	10	9		
	SSW	S	SSE	SSE	SSE	SSE	SSE	S	S	S	S	S	S	S	S	SSW	SSW	SSW	SSW	SSW	SSW	SSW	SSW	SSW	S	SSE	SSE	SE	SSE	SSE	SSE	S	S	S			
75/76	10	10	12	15	16	18	18	18	17	16	15	13	12	12	11	10	9	8	7	7	8	9	10	9	9	11	13	15	17	17	15	14	13	12			
	SSW	S	SSE	SSE	SSE	SSE	SSE	S	S	S	S	S	S	S	S	SSW	SSW	SSW	SSW	SSW	SSW	SSW	SSW	SSW	S	SSE	SSE	SSE	SSE	SSE	SSE	S	S	S			
63/64	9	10	12	14	15	16	15	14	13	12	11	11	11	10	9	8	7	7	6	6	7	7	7	7	8	10	12	13	15	15	14	13	12	11	10		
	SSW	S	SSE	SSE	SSE	SSE	SSE	S	S	S	S	S	S	S	S	SSW	SSW	SSW	SSW	SSW	SSW	SSW	SSW	SSW	S	SSE	SSE	SSE	SSE	SSE	SSE	S	S	S			
51/52	9	11	14	16	16	17	17	17	16	15	14	13	13	12	12	11	10	9	8	8	8	8	8	7	7	9	11	14	15	17	17	16	15	15	13	12	
	SSW	S	SSE	SSE	SSE	SSE	SSE	S	S	S	S	S	S	S	S	SSW	SSW	SSW	SSW	SSW	SSW	SSW	SSW	SSW	S	SSE	SE	SSE	SSE	SSE	SSE	S	S	S			
37/38	10	11	14	15	16	16	17	17	16	15	14	13	13	13	12	12	11	10	9	9	8	8	8	7	7	9	11	13	14	15	17	17	16	15	14	13	
	SSW	S	SSE	SSE	SSE	SSE	SSE	S	S	S	S	S	S	S	S	SSW	SSW	SSW	SSW	SSW	SSW	SSW	SSW	SSW	S	SSE	SSE	SSE	SSE	SSE	SSE	S	S	S			
25/26	12	12	13	14	15	16	16	16	15	14	13	13	14	14	14	13	12	11	11	10	10	10	10	10	10	11	13	14	15	16	17	16	15	14	14	13	
	SSW	S	S	S	S	S	S	S	S	S	S	S	S	S	S	SSW	SSW	SSW	SSW	SSW	SSW	SSW	SSW	SSW	S	SSE	SSE	SSE	SSE	SSE	SSE	S	S	S			
11/12	10	10	10	11	12	12	12	13	12	11	11	11	11	11	11	10	10	9	9	8	8	8	8	8	8	9	9	10	10	11	11	11	10	10	10	10	
	SSW	S	S	S	S	S	S	S	S	S	S	S	S	S	S	SSW	SSW	SSW	SSW	SSW	SSW	SSW	SSW	SSW	S	S	S	S	S	S	S	S	S	S			
1 & 2 Bravo	11	11	11	12	12	13	13	13	13	13	13	13	13	13	13	13	13	12	11	11	10	9	9	8	8	8	9	10	10	11	12	12	12	12	12	12	
	SSW	S	S	S	S	S	S	S	S	S	S	S	S	S	S	SSW	SSW	SSW	SSW	SSW	SSW	SSW	SSW	SSW	S	S	S	S	S	S	S	S	S	S			

NOTE: This is automated data that may/may not agree with the official BAM thinking that's found on the daily slides. This data should be used as a guide only

Houston Pilots: Sat. 8/12/2023



Forecast Discussion

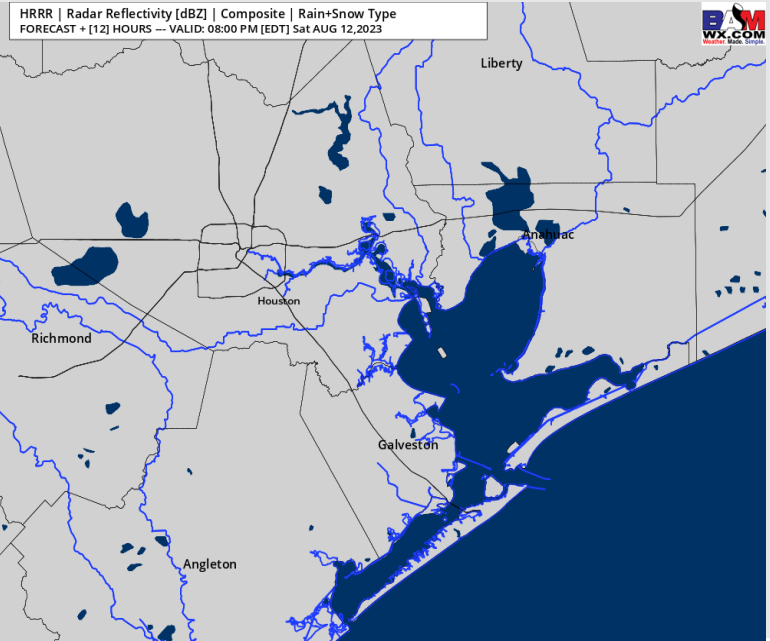
Precip: Favoring dry conditions throughout the remainder of the day.

Wind: SSW winds will gradually shift more out of the S/ SSE into the afternoon/ evening (roughly the 2 - 6 PM timeframe). Winds N of Morgan's Point will increase from 4-9 kts to 8-13 kts by 5 PM, decreasing back to 4-9 kts around 10 PM. Winds from Morgan's Point to 37/38 will be at 13-20 kts until 10 PM, while winds for all other Stations S of 37/38 will be at 8-13 kts until 6 PM. After 6 PM winds for Stations S of 37/38 will pick up to 13-20 until 10 PM. After 10 PM winds for Morgan's Point and all Stations S will decrease to 11-16 kts.

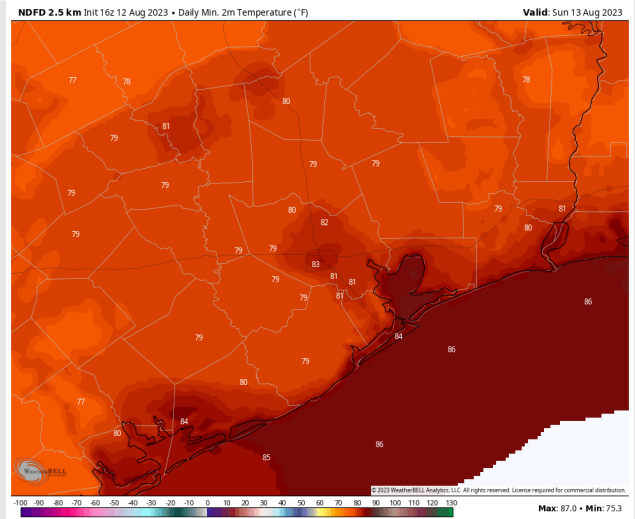
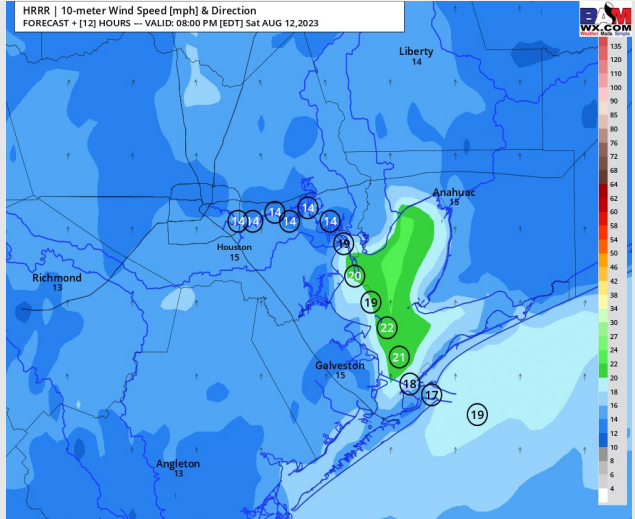
Temps: Low temperatures tonight will be in the mid 80s F for Stations S of Morgan's Point and in the upper 70s/low 80s F for Stations N of Morgan's Point.

Visibility: Not anticipating any visibility concern.

Precip Image: 7 PM CT



Wind Speed:
7 PM CT



Low Temps
Sun AM

Houston Pilots: Sun. 8/13/2023



Forecast Discussion

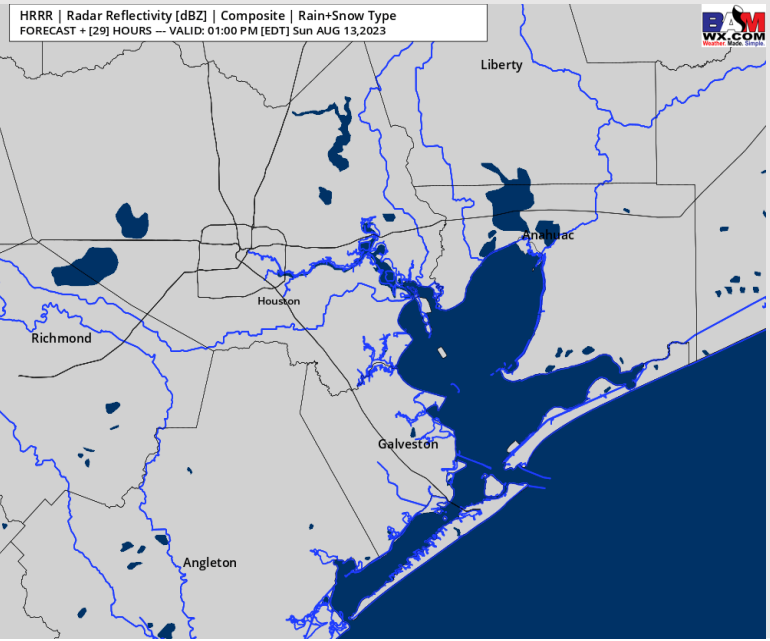
Precip: Favoring dry conditions throughout the day Sunday.

Wind: A gradual weakening of winds is expected through the AM as winds shift back to the SSW. By 6 AM, winds are expected to be 8 – 14 kts S of Morgan’s Point (windiest towards Boarding Station) with winds of 3 – 7 kts N of Morgan’s Point. Like Saturday’s progression, winds are expected to pick up and become more out of the S/ SSE into the afternoon (2 – 6 PM). By 6 PM, winds look to be 11 – 16 kts at Morgan’s Point and Stations S, while winds will be 7-12 kts N of Morgan’s Point. A few gusts of 24 MPH will be possible into the afternoon. Towards midnight, winds will slow down N of Morgan’s Point to 4 – 8 kts with winds S of Morgan’s Point going to 10 – 14 MPH. A few gusts of 18 mph will be possible towards the Boarding Station.

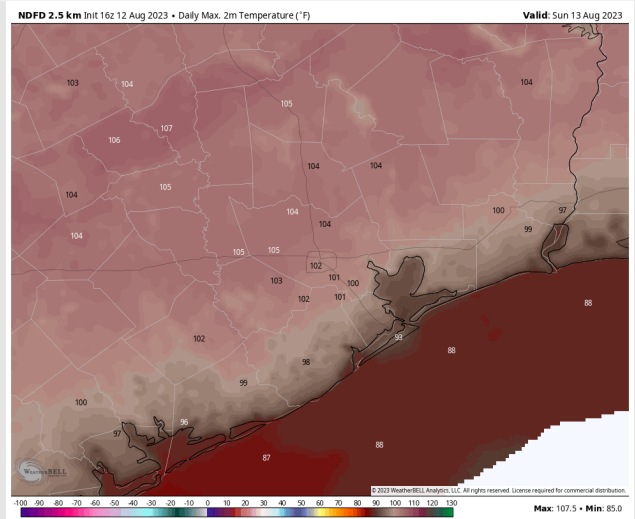
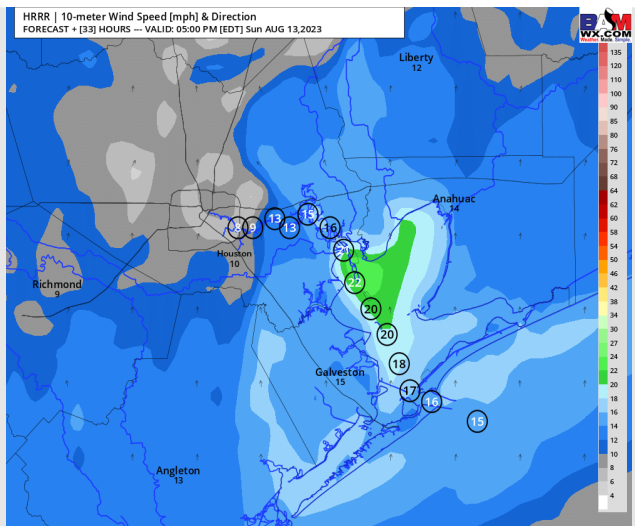
Temps: High temperatures Sunday look to be into the low to mid 90’s F over open waters. Temperatures N of Morgan’s Point look to get into the upper 90’s F to lower 100’s F

Visibility: Not anticipating any visibility concerns currently.

Precip Image: 12 PM CT



Wind Speed:
4 PM CT



High Temps
Sunday

Forecast Discussion

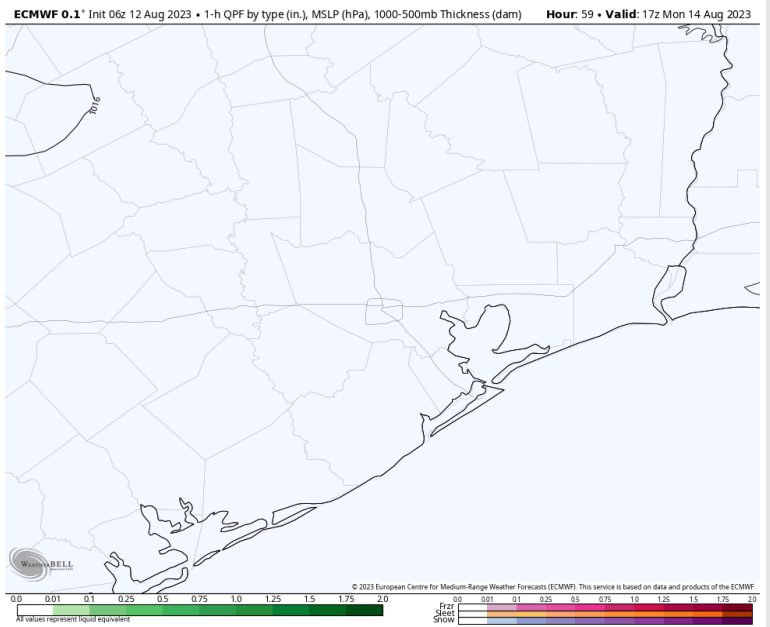
Precip: Isolated (20%) chances for storms possible Monday afternoon.

Wind: Near rinse/ repeat wind regime for Monday. Winds Monday AM will gradually weaken and shift to the SW. By 8 AM, winds look to be 4 – 9 MPH (windiest towards boarding station) and 1 – 4 knots for Stations to the N. Winds will then increase into the afternoon and start to shift more out of the S/ SSE. By 9 PM, winds are expected to be 11 – 16 knots with gusts near 18 MPH for Stations S of Morgan's Point with winds around 8 – 11 knots for Stations N. Winds will start to gradually shift more out of the SSW towards midnight.

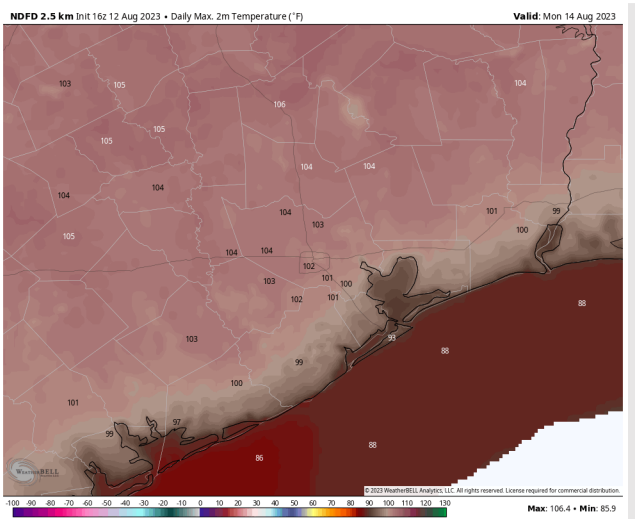
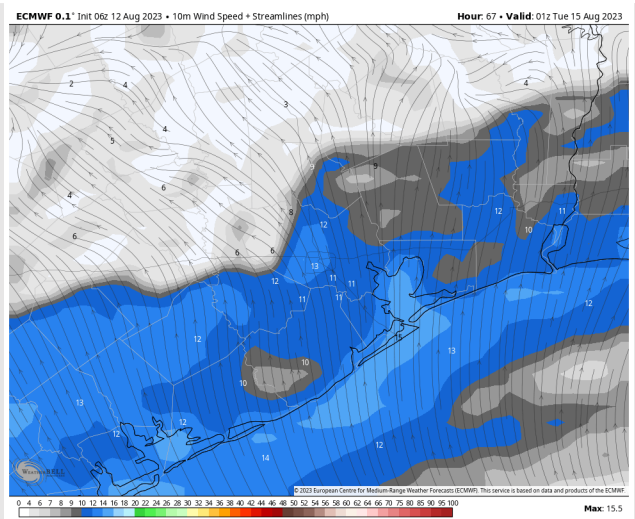
Temps: High temperatures Monday look to be into the low to mid 90's F over open waters. Temperatures N of Morgan's Point look to get into the upper 90's F to lower 100's F

Visibility: Not anticipating any visibility concerns currently.

Precip Image: 12 PM CT

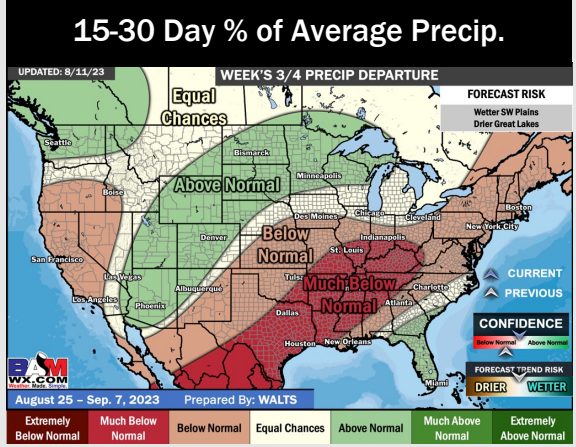
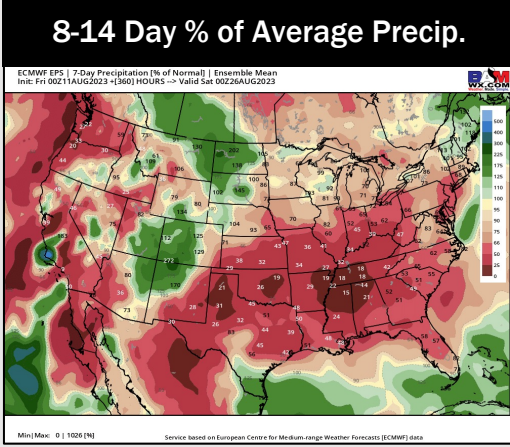
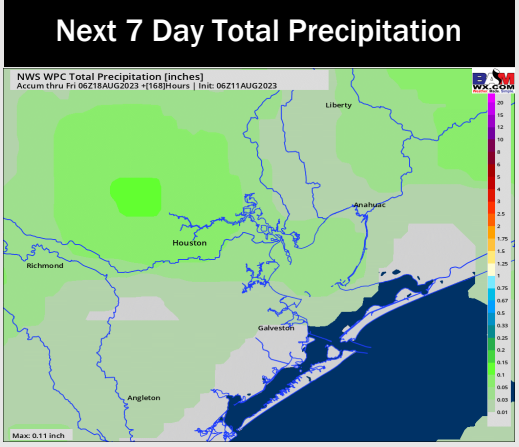
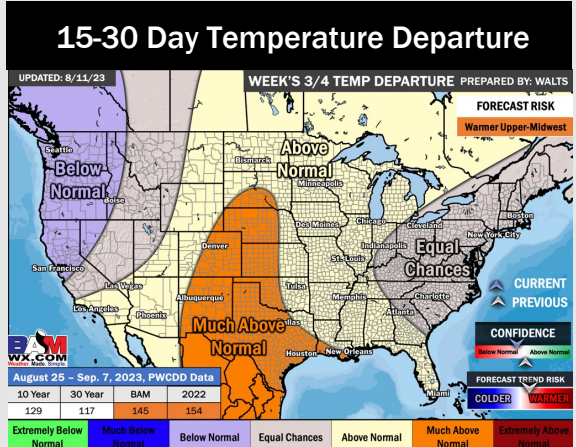
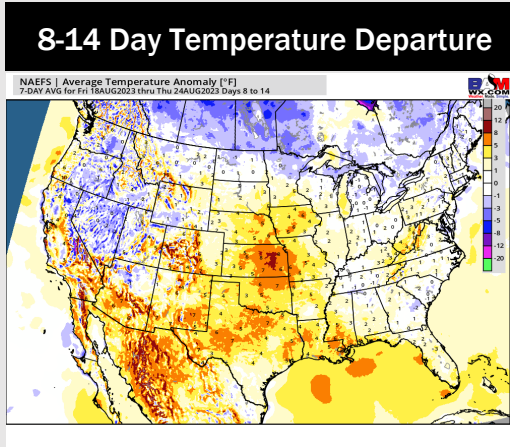
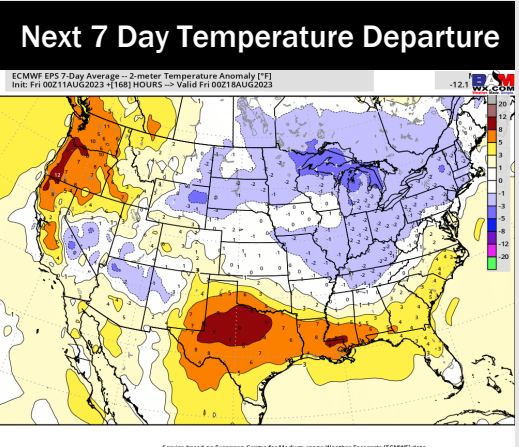


Wind Speed:
8 PM CT



High Temps
Monday

Houston Pilots: 8/12/23



- A few minor chances for precipitation next week. Temperatures continue to remain above normal
- Expecting below normal precipitation chances and above normal temperatures for the week 2 timeframe.
- Much above normal temperatures and much below normal chances for precipitation are favored in the weeks 3/4 timeframe.