

Houston Pilots Forecast Package



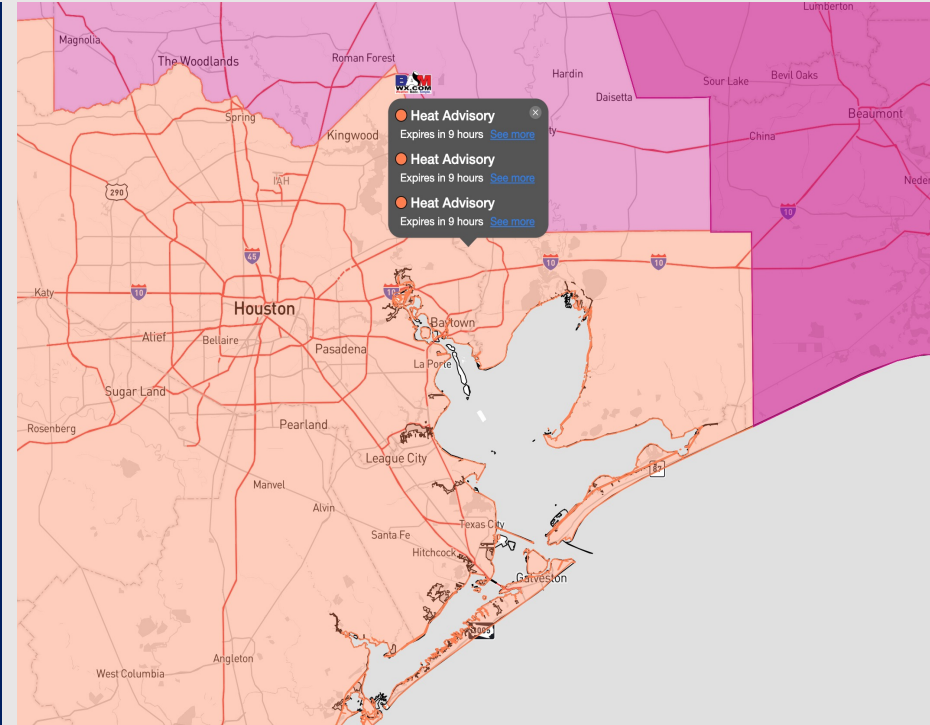
Updated: 12:00 PM CT

Tuesday, August 1, 2023

Forecaster: John Kemper

Weather Headlines

- Aside from a low end chance of pop ups today, drier conditions are favored through the end of the week.
- Excessive heat concerns (90+ F) to continue throughout at least next week.
- No active tropical threats to SE TX for next 7-10 days.
- Winds are primarily favored to remain calm, especially during the late morning / early afternoon hours (<10 kts) with speeds seldom exceeding 17 kts in the late PM over the next 72 hours.



Radar/NWS Alerts: 12:00 PM CT



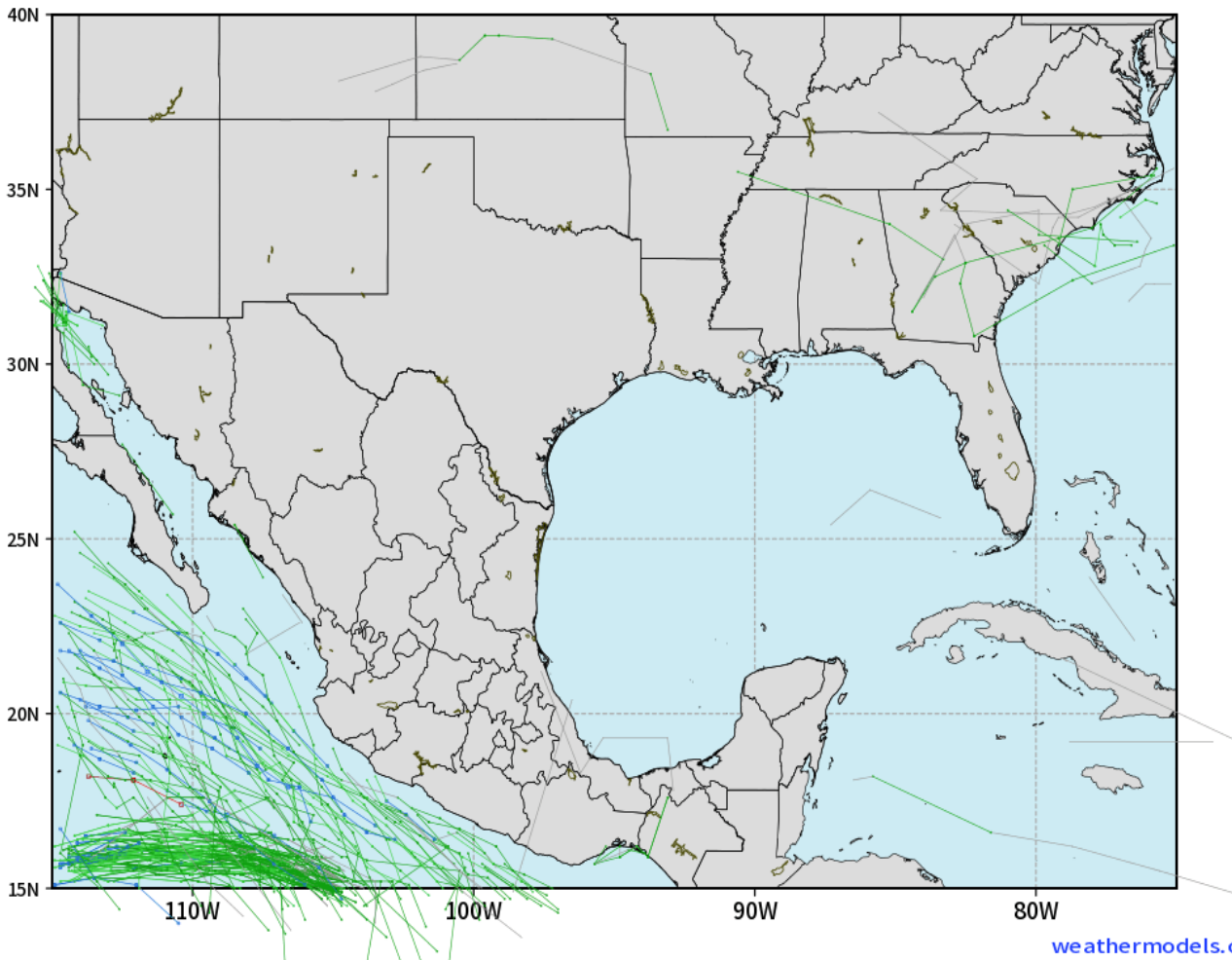
As always, please do not hesitate to reach out to us with any forecast questions via the chat option on the Weather Porthole or our on-call number, **(317)-560-8122** press 1 for forecast questions.

Houston Pilots Tropical Update

American Model Low Pressure Tracks Next 10-Days

ECMWF GULF EPS Cyclone Locations --> Next [10-days]
INIT: 00Z01AUG2023 --> UNTIL 00Z11AUG2023

o-o ENSEMBLE MEAN
o-o 1000 - 1010 hPa
o-o 980 - 999 hPa
o-o 960 - 979 hPa
o-o 950 - 959 hPa
o-o < 950 hPa



No tropical activity anticipated over the next 10 days for SE TX.

No other areas of interest being noted across the Gulf of Mexico / Western Atlantic

Houston Pilots Visibility Chart (miles)



Forecast Confidence



Time	Tue 11am	Tue 12pm	Tue 1pm	Tue 2pm	Tue 3pm	Tue 4pm	Tue 5pm	Tue 6pm	Tue 7pm	Tue 8pm	Tue 9pm	Tue 10pm	Tue 11pm	Wed 12am	Wed 1am	Wed 2am	Wed 3am	Wed 4am	Wed 5am	Wed 6am	Wed 7am	Wed 8am	Wed 9am	Wed 10am	Wed 11am	Wed 12pm	Wed 1pm	Wed 2pm	Wed 3pm	Wed 4pm	Wed 5pm	Wed 6pm	Wed 7pm	Wed 8pm	Wed 9pm	Wed 10pm	
610 Bridge	10	10	10	10	10	10	10	10	10	10	10	10	10	10	10	10	10	10	10	10	10	10	10	10	10	10	10	10	10	10	10	10	10	10	10	10	10
Kinder 1	10	10	10	10	10	10	10	10	10	10	10	10	10	10	10	10	10	10	10	10	10	10	10	10	10	10	10	10	10	10	10	10	10	10	10	10	10
Greens Bayou	10	10	10	10	10	10	10	10	10	10	10	10	10	10	10	10	10	10	10	10	10	10	10	10	10	10	10	10	10	10	10	10	10	10	10	10	10
Shell Crude	10	10	10	10	10	10	10	10	10	10	10	10	10	10	10	10	10	10	10	10	10	10	10	10	10	10	10	10	10	10	10	10	10	10	10	10	10
Lynchburg Ferries	10	10	10	10	10	10	10	10	10	10	10	10	10	10	10	10	10	10	10	10	10	10	10	10	10	10	10	10	10	10	10	10	10	10	10	10	10
Exxon 3	10	10	10	10	10	10	10	10	10	10	10	10	10	10	10	10	10	10	10	10	10	10	10	10	10	10	10	10	10	10	10	10	10	10	10	10	10
Morgans Point	10	10	10	10	10	10	10	10	10	10	10	10	10	10	10	10	10	10	10	10	10	10	10	10	10	10	10	10	10	10	10	10	10	10	10	10	10
75/76	10	10	10	10	10	10	10	10	10	10	10	10	10	10	10	10	10	10	10	10	10	10	10	10	10	10	10	10	10	10	10	10	10	10	10	10	10
63/64	10	10	10	10	10	10	10	10	10	10	10	10	10	10	10	10	10	10	10	10	10	10	10	10	10	10	10	10	10	10	10	10	10	10	10	10	10
51/52	10	10	10	10	10	10	10	10	10	10	10	10	10	10	10	10	10	10	10	10	10	10	10	10	10	10	10	10	10	10	10	10	10	10	10	10	10
37/38	10	10	10	10	10	10	10	10	10	10	10	10	10	10	10	10	10	10	10	10	10	10	10	10	10	10	10	10	10	10	10	10	10	10	10	10	10
25/26	10	10	10	10	10	10	10	10	10	10	10	10	10	10	10	10	10	10	10	10	10	10	10	10	10	10	10	10	10	10	10	10	10	10	10	10	10
11/12	10	10	10	10	10	10	10	10	10	10	10	10	10	10	10	10	10	10	10	10	10	10	10	10	10	10	10	10	10	10	10	10	10	10	10	10	10
1 & 2 Bravo	10	10	10	10	10	10	10	10	10	10	10	10	10	10	10	10	10	10	10	10	10	10	10	10	10	10	10	10	10	10	10	10	10	10	10	10	10

NOTE: This is automated data that may/may not agree with the official BAM thinking that's found on the daily slides or special visibility report slides. This data should be used as a guide only

Houston Pilots Wind Chart



Forecast Confidence



Example

Sustained wind 13 Knots
 Gusts 18 Knots
 Wind from the N

WS: 13
 G:18
 N

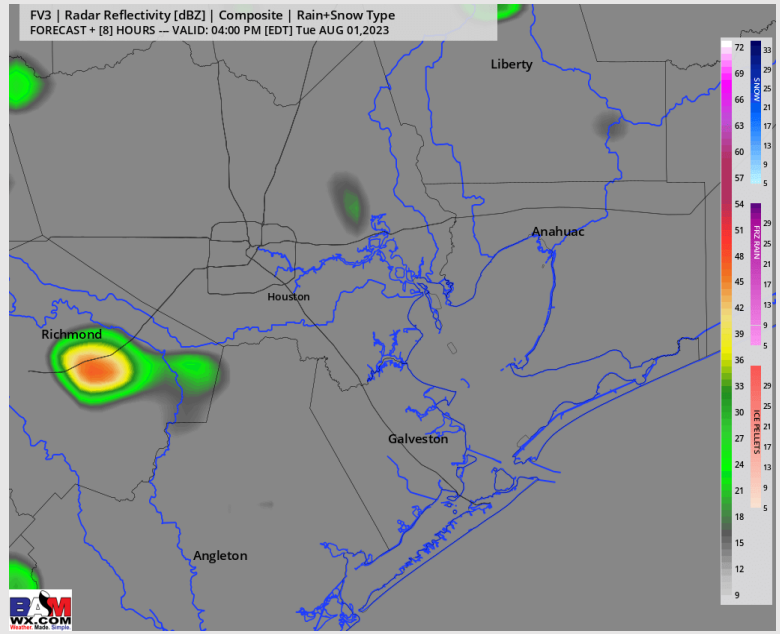
Time Knots	Tue 11am	Tue 12pm	Tue 1pm	Tue 2pm	Tue 3pm	Tue 4pm	Tue 5pm	Tue 6pm	Tue 7pm	Tue 8pm	Tue 9pm	Tue 10pm	Tue 11pm	Wed 12am	Wed 1am	Wed 2am	Wed 3am	Wed 4am	Wed 5am	Wed 6am	Wed 7am	Wed 8am	Wed 9am	Wed 10am	Wed 11am	Wed 12pm	Wed 1pm	Wed 2pm	Wed 3pm	Wed 4pm	Wed 5pm	Wed 6pm	Wed 7pm	Wed 8pm	Wed 9pm	Wed 10pm		
610 Bridge	2	2	2	1	1	4	6	7	8	7	7	6	5	5	4	4	4	4	3	2	2	2	3	3	4	4	5	7	6	6	8	9	10	10	10	9	8	7
	4	3	3	3	3	5	8	10	12	12	14	13	13	12	13	6	6	6	5	4	3	3	4	4	4	5	7	8	9	11	11	12	13	13	13	11	10	
	WNW	WSW	WSW	WSW	SSE	ESE	SE	SE	SSE	S	S	SSW	SSW	SW	SW	SW	SW	SW	SW	SW	WSW	WSW	WSW	WSW	SSW	SSE	SE	SE	SE	SE	SE	SSE	SSE	SSE	S	S		
Kinder 1	3	2	2	1	2	5	6	7	8	8	7	6	5	5	4	4	4	3	2	2	2	3	3	4	4	5	7	8	9	10	11	12	13	13	12	11	10	
	4	3	3	3	3	6	8	10	12	12	14	13	13	12	13	7	6	5	4	4	3	3	4	4	5	7	8	9	10	11	12	13	13	12	11	10		
	W	WSW	WSW	SW	ESE	ESE	SE	SE	SE	S	S	SSW	SSW	SSW	SW	SW	SW	SW	SW	SW	WSW	WSW	WSW	WSW	SW	SE	SE	SE	SE	SE	SSE	SSE	SSE	S	S			
Greens Bayou	3	2	2	1	3	6	7	8	8	8	7	6	5	5	4	4	4	3	2	2	2	3	3	3	3	5	6	7	8	8	10	10	10	9	8	7		
	4	3	3	3	3	7	9	10	12	13	14	13	13	12	13	7	6	5	4	4	3	4	4	4	5	7	8	9	10	12	13	13	13	12	11	10		
	WSW	WSW	WSW	S	ESE	SE	SE	SSE	SSE	S	S	SSW	SSW	SSW	SW	SW	SW	SW	SW	WSW	WSW	WSW	WSW	S	SE	SE	SE	SE	SE	SE	SSE	SSE	SSE	S	S			
Shell Crude	3	2	1	1	4	7	8	8	8	8	7	5	5	4	4	4	3	3	2	2	2	3	3	4	5	6	8	8	9	10	10	10	9	8	7			
	3	3	3	3	5	8	10	10	12	13	14	13	13	12	13	7	6	5	4	4	3	4	4	4	5	7	8	9	11	12	13	13	13	12	11	10		
	W	WSW	WSW	SSE	SE	SE	SE	SSE	S	S	S	SSW	SSW	SSW	SW	SW	SW	SW	WSW	WSW	WSW	WSW	SW	S	SSE	SE	SE	SE	SE	SE	SSE	SSE	SSE	S	S			
Lynchburg Ferries	3	3	2	2	5	8	8	8	8	8	7	5	5	4	3	5	4	4	3	3	3	3	3	4	5	6	8	8	9	10	11	12	11	10	8	7		
	3	3	3	3	4	6	9	10	11	12	13	14	13	12	12	7	6	6	4	4	4	4	4	5	6	7	8	10	11	13	14	14	14	13	12	10		
	WSW	WSW	SW	SSE	SSE	SE	SE	SSE	SSE	S	S	SSW	SSW	SSW	SW	SW	SW	SW	WSW	WSW	WSW	WSW	WSW	WSW	SSW	SSE	SSE	SE	SSE	SSE	SSE	SSE	SSE	S	S			
Exxon 3	3	3	4	5	7	8	8	9	9	8	7	6	5	5	4	5	5	4	4	3	3	3	3	3	4	6	7	8	10	11	12	12	12	10	9	8		
	4	5	6	9	10	10	12	13	14	14	14	14	12	13	12	7	6	5	5	4	4	5	5	6	7	9	10	12	13	15	15	14	13	12	10			
	SW	SSW	S	S	SSE	SSE	SSE	S	S	S	S	SSW	SSW	SSW	SSW	SW	SW	SW	WSW	WSW	WSW	WSW	WSW	SW	S	SSE	SSE	SSE	SSE	SSE	SSE	SSE	SSE	S	S			
Morgans Point	3	4	6	7	9	9	10	10	10	9	9	8	6	7	6	6	5	5	4	4	3	4	4	4	6	8	9	11	12	13	13	13	11	10	9			
	3	4	6	7	10	11	12	13	13	14	15	14	13	13	13	8	7	7	6	5	5	4	5	5	6	8	9	11	13	14	16	16	15	14	12	11		
	SSW	SSE	SSE	SSE	SE	SSE	SSE	SSE	S	S	S	SSW	SSW	SSW	SW	SW	SW	WSW	WSW	WSW	WSW	WSW	WSW	SW	S	SSE	SE	SSE	SSE	SSE	SSE	SSE	SSE	S	S			
75/76	2	3	6	8	10	11	12	12	12	12	11	11	9	9	9	8	7	7	6	5	5	5	4	4	5	6	8	10	12	13	15	15	14	14	12	11		
	4	5	6	8	11	12	13	14	14	15	15	15	14	13	14	9	8	8	7	6	5	5	5	5	6	8	10	11	13	15	16	17	16	15	14	13		
	SSE	SE	SE	SE	SE	SE	SSE	SSE	S	S	SSW	SSW	SSW	SW	SW	SW	SW	WSW	WSW	WSW	WSW	WSW	WSW	SW	SSE	SE	SE	SE	SE	SE	SE	SE	SE	S	S			
63/64	2	3	5	7	10	11	12	12	12	12	12	11	10	9	10	8	8	7	6	5	5	5	4	3	4	5	7	9	11	12	14	15	14	13	12	11		
	4	5	6	8	11	12	13	14	14	15	15	14	13	13	14	9	8	7	6	5	5	5	5	5	6	7	9	11	13	14	15	16	15	15	13	12		
	SE	ESE	SE	SE	SE	SSE	S	S	S	S	SSW	SSW	SSW	SW	SW	SW	SW	WSW	WSW	WSW	WSW	WSW	WSW	WSW	SE	SE	SE	SE	SSE	SSE	SSE	SSE	S	S	S			
51/52	1	3	4	6	9	10	11	12	13	12	12	11	10	9	9	7	7	6	5	4	4	5	4	3	4	5	7	9	10	12	13	13	13	12	11	10		
	4	5	5	7	10	11	12	13	14	14	14	14	13	12	13	8	8	7	6	5	5	5	5	4	6	7	9	10	12	13	14	15	14	14	12	12		
	SE	ESE	SE	SE	SSE	SSE	S	S	S	S	SSW	SSW	SSW	SW	SW	SW	SW	WSW	WSW	WSW	WSW	WSW	WSW	WSW	SE	SE	SE	SSE	SSE	SSE	SSE	SSE	S	S	S			
37/38	2	3	4	6	8	9	10	11	12	12	11	11	10	9	9	7	6	6	5	4	4	4	4	3	4	5	7	9	10	11	12	12	12	11	10	9		
	4	5	5	7	9	10	11	12	14	14	14	13	13	12	12	8	7	6	5	4	4	4	4	5	6	8	10	11	12	13	13	12	11	10	9			
	SSE	SSE	SSE	SSE	SSE	S	S	S	S	S	SSW	SSW	SSW	SW	SW	SW	SW	WSW	WSW	WSW	W	WSW	WSW	SSE	SE	SE	SSE	SSE	SSE	SSE	SSE	S	S	S				
25/26	3	4	4	6	8	8	9	10	11	10	10	10	9	8	9	6	6	5	4	3	3	3	4	3	4	5	7	8	9	10	10	10	9	8	8			
	4	5	5	7	8	8	9	10	12	13	13	13	12	12	12	7	6	6	5	4	4	4	4	4	5	6	8	9	10	10	11	11	10	9	8			
	SSW	S	S	SSE	SSE	S	S	S	S	S	S	SSW	SSW	SSW	SW	SW	SW	WSW	WSW	WSW	W	W	W	WSW	SSE	SE	SE	SSE	SSE	SSE	SSE	S	S	S				
11/12	3	5	5	7	8	9	9	11	11	11	10	9	9	9	9	7	6	5	5	4	3	4	4	3	4	5	7	8	8	9	9	9	9	8	8			
	3	5	5	7	8	9	10	12	13	13	12	12	12	12	11	8	7	6	6	5	4	4	4	4	5	6	8	9	10	10	10	10	11	10	9	9		
	SW	S	S	S	S	S	S	S	S	S	SSW	SSW	SSW	SSW	SW	SW	SW	WSW	WSW	WSW	W	W	W	W	S	SE	SE	SSE	SSE	SSE	SSE	S	S	S				
1 & 2 Bravo	3	3	4	5	7	9	10	11	12	12	11	11	11	11	11	8	7	7	6	5	4	4	4	3	4	6	6	8	8	9	9	10	10	9	8			
	3	3	4	6	7	9	10	12	13	12	12	11	11	11	11	9	8	8	6	6	5	5	4	4	5	7	7	8	9	10	10	11	11	11	11	11		
	WSW	SW	SSW	S	S	S	S	S	S	S	SSW	SSW	SSW	SSW	SSW	SSW	SW	SW	WSW	WSW	WSW	WSW	W	W	WSW	SE	SSE	SSE	SSE	SSE	SSE	S	S	S				

NOTE: This is automated data that may/may not agree with the official BAM thinking that's found on the daily slides. This data should be used as a guide only

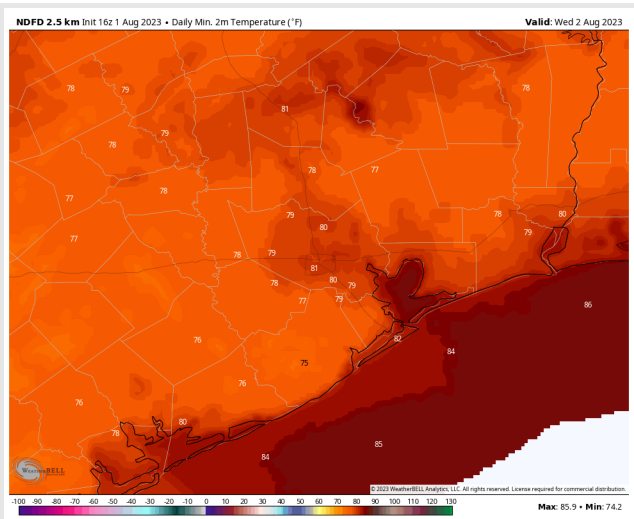
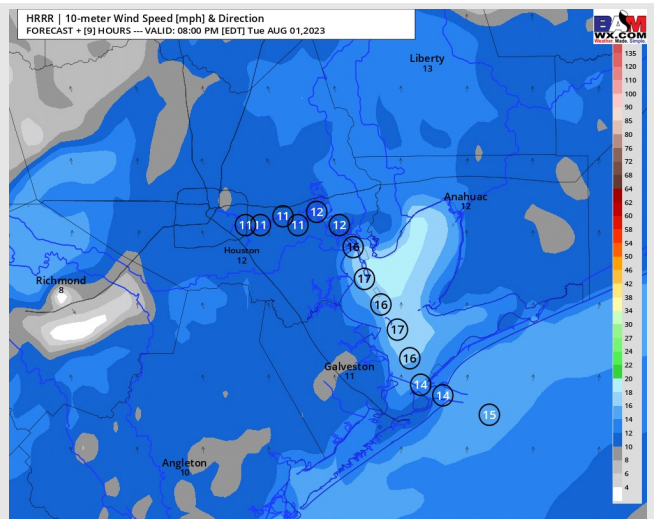
Forecast Discussion

- Precip:** Favoring mostly dry conditions throughout the day, with low end potential for a pop-up shower/storm between 3PM-7PM for stations N of Morgan's Point.
- Wind:** Winds will be out of the S/SW throughout the day. For Stations N of Morgan's Point winds will be 2 - 7 kts until 5 PM, thereafter they will increase to 6-11 kts for the remainder of the evening. Stations S of Morgan's Point will see winds of 5-10 kts until 3 PM, after which time winds will increase to 13-16 kts for the rest of the day.
- Temps:** Low temperatures will be in the mid 80s F for the Boarding Station, lower 80's F for all other stations.
- Visibility:** Not anticipating any visibility concerns at this time.

Precip Image: 3 PM CT



Wind Speed:
7 PM CT



Low Temps
Today

Forecast Discussion

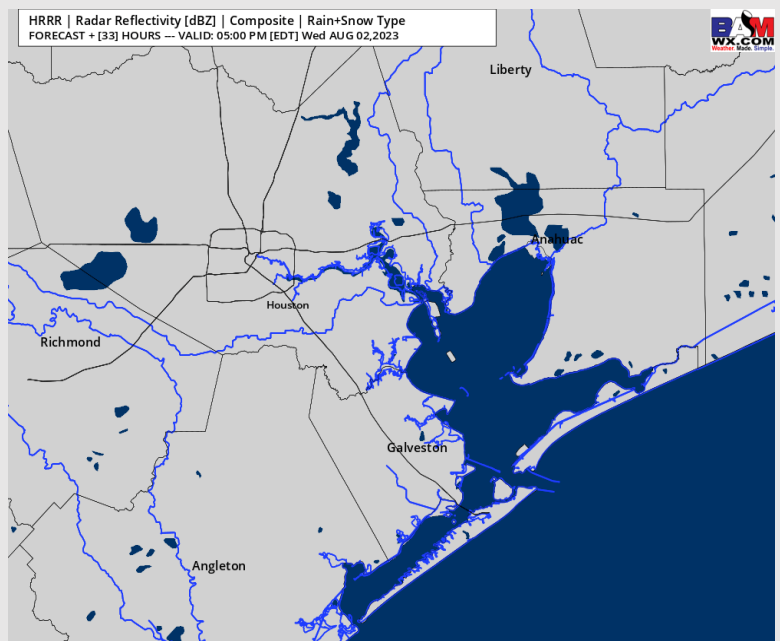
Precip: Favoring dry conditions throughout the day Wednesday.

Wind: Winds will be out of the S/SW throughout the day for all Stations. For Stations N of Morgan's Point, winds of 2 – 7 kts will continue through 4 PM. After 4 PM winds will increase to 5 – 10 kts for the rest of the evening. For Stations S of Morgan's Point, winds will be at 7 – 12 kts through 8 AM, after which time winds will calm to 2 – 7 kts through 3 PM. After 3 PM winds will increase to 10–15kts for the rest of the day. **Wind gusts of 17-21 kts are possible for stations S of Morgan's points after 3 PM**

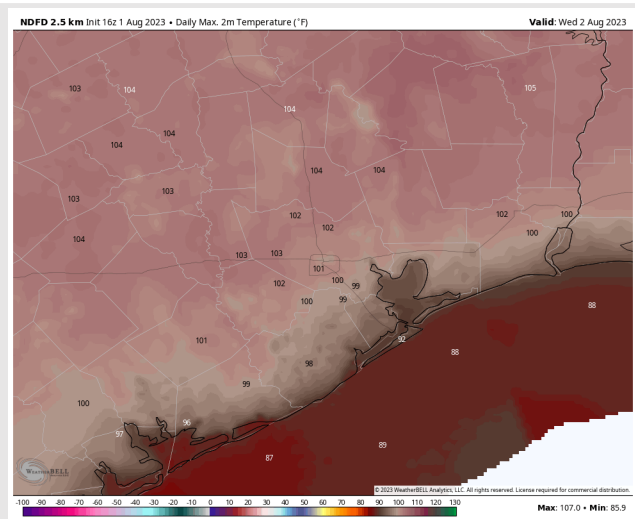
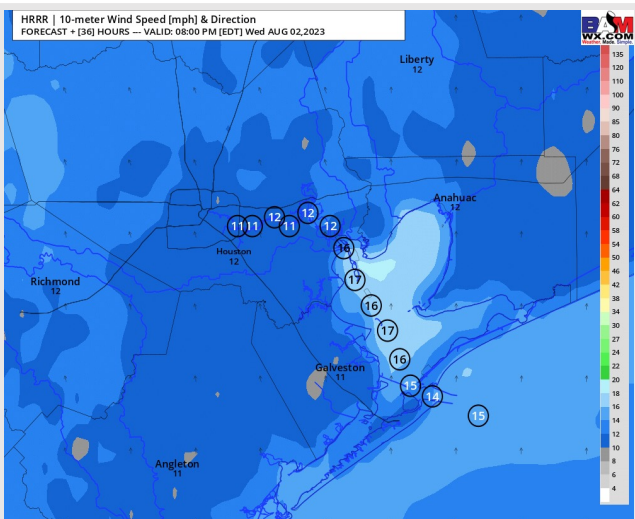
Temps: High temperatures Wednesday will be in the upper 80s F for the Boarding Station, low/mid 90s F for all other Stations S of Morgan's Point and upper 90s/low 100s F N of Morgan's Point.

Visibility: Not anticipating any visibility concerns at this time.

Precip Image: 4 PM CT



**Wind Speed:
7 PM CT**



**High Temps
Wednesday**

Forecast Discussion

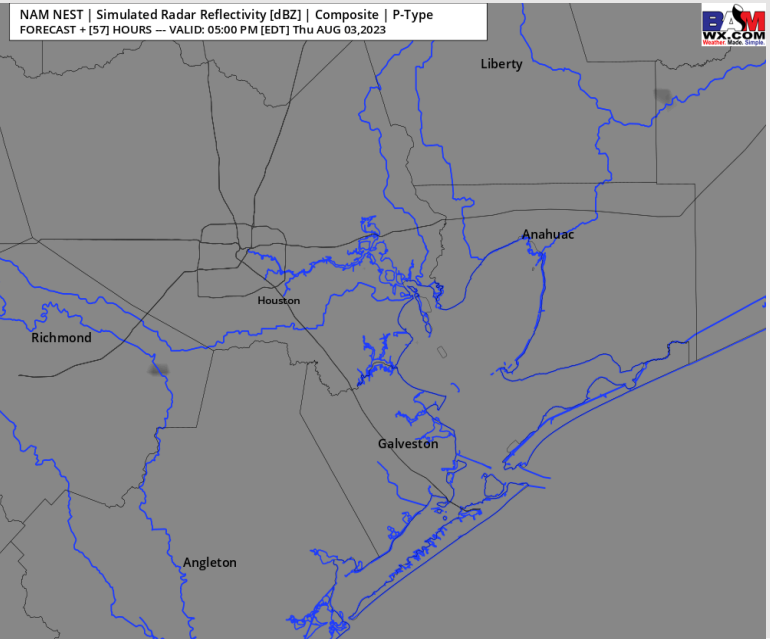
Precip: Favoring dry conditions throughout the day Thursday.

Wind: Winds will be out of the SW through 3PM, when then they will shift to be out of the S for the rest of the day. Winds for stations N of Morgan's Point will be 2-7kts until 3 PM. After 3PM, winds will be 6-11kts for the rest of the day. For stations S of Morgan's Points winds will be 7-12kts until 8 AM. After 8 AM winds will decrease slightly to 5-10kts until 1 PM. After 1 PM winds will increase to 7-12kts for the rest of the day. **Wind gusts of 18-22 kts are possible for locations N of Station 11/12 after 3 PM.**

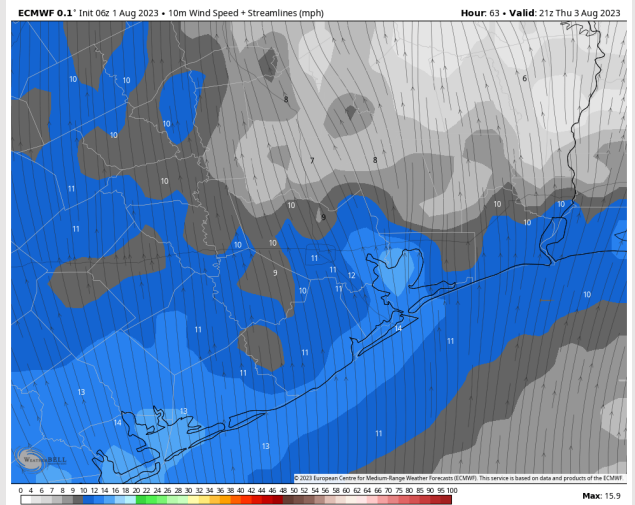
Temps: High temperatures Thursday will be in the upper 80s F for the Boarding Station, low/mid 90s F for all other Stations S of Morgan's Point and upper 90s/low 100s F N of Morgan's Point.

Visibility: Not anticipating any visibility concerns at this time.

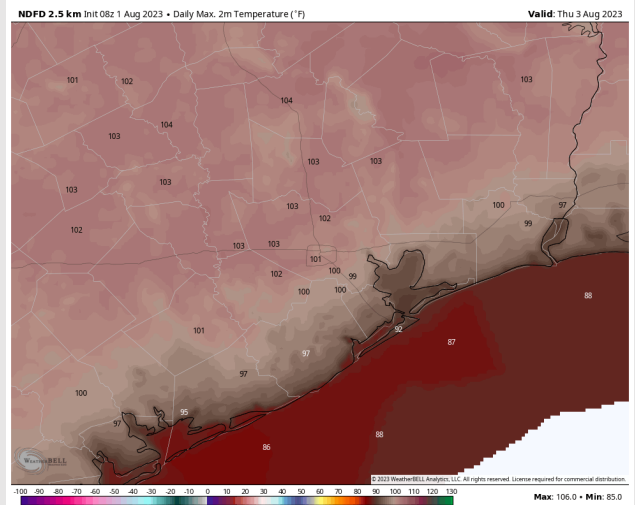
Precip Image: 4 PM CT



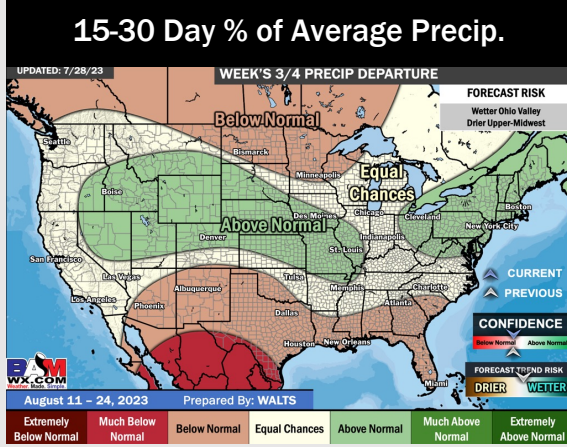
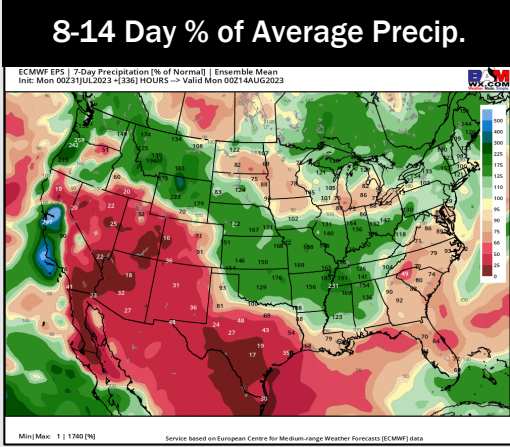
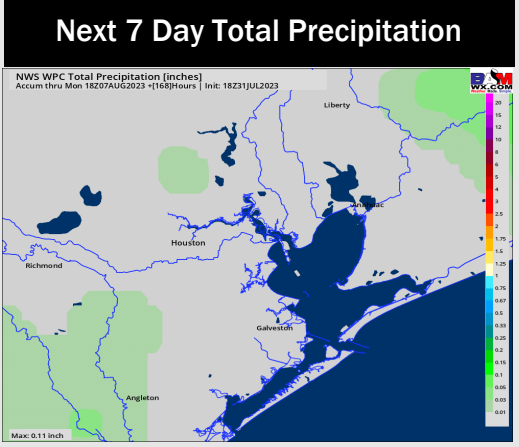
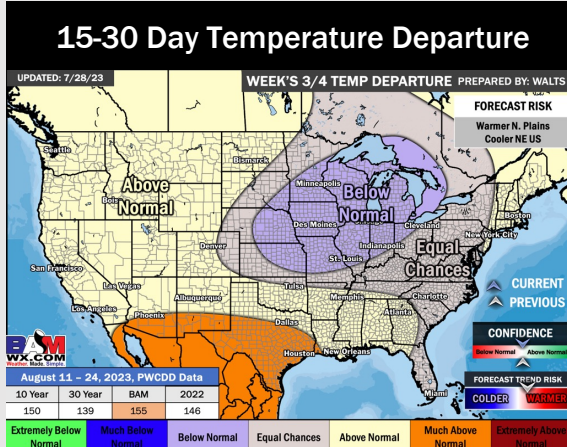
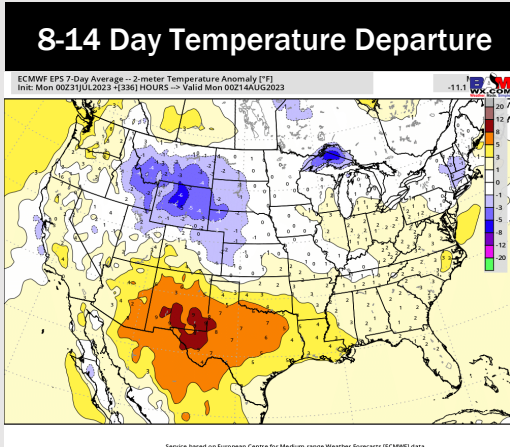
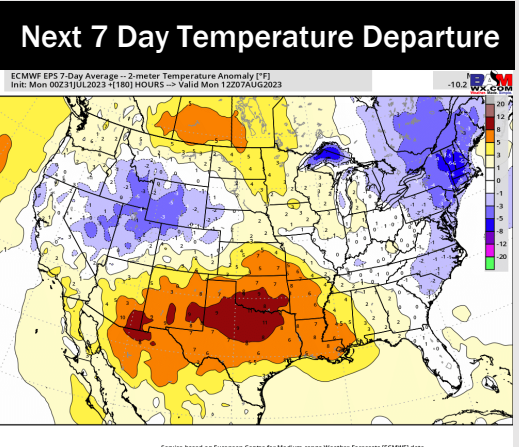
Wind Speed: 5 PM CT



High Temps Thursday



Houston Pilots: 8/1/23



- Above normal temperatures are favored over the next week. Anticipating mostly dry conditions for the area over the next week.
- Expecting much below normal precipitation chances and above normal temperatures for the week 2 timeframe.
- Much above normal temperatures and below normal chances for precipitation are favored in the weeks 3/4 timeframe.