

Houston Pilots Forecast Package

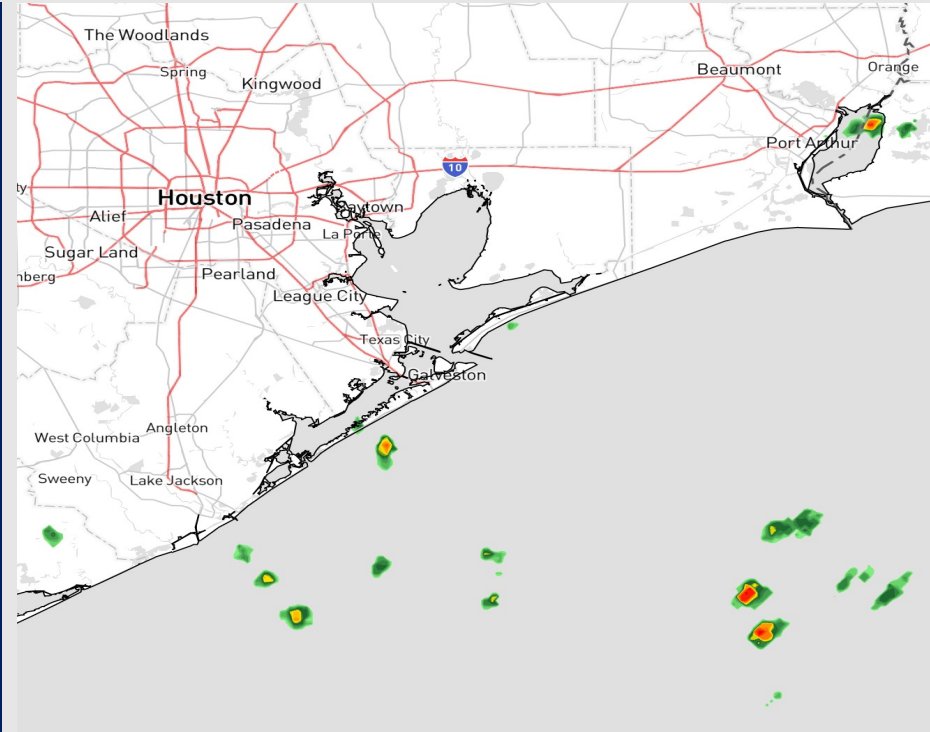


Updated: 5:40 AM CT
Tuesday, July 4, 2023

Forecaster: Xander Lowry

Weather Headlines

- Chances for scattered showers/thunderstorms return this week with chances all week.
- Excessive heat concerns (90+ F) to continue throughout at least next week.
- No active tropical threats to SE TX at this time.
- No signals for fog impacting stations moving forward.



Radar/NWS Alerts: 5:40 AM CT



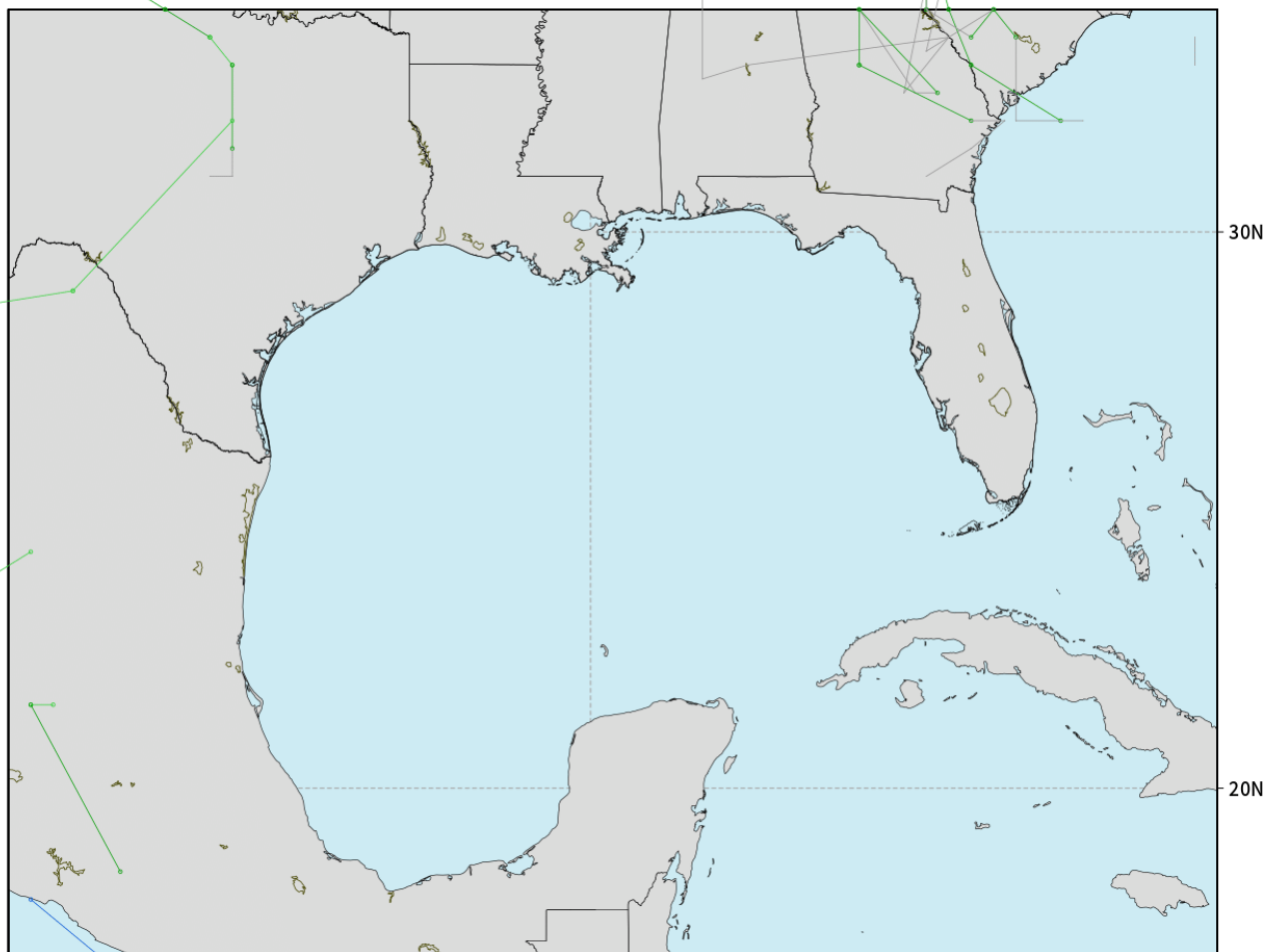
As always, please do not hesitate to reach out to us with any forecast questions via the chat option on the Weather Porthole or our on-call number, **(317)-560-8122** press 1 for forecast questions.

Houston Pilots Tropical Update

American Model Low Pressure Tracks Next 10-Days

NOAA GEFSv12 | All Ensemble Cyclones +240 Hours
INIT: 00Z04JUL2023 --> UNTIL 00Z14JUL2023

o-o > 1010 hPa
o-o 1000 - 1010 hPa
o-o 980 - 999 hPa
o-o 960 - 979 hPa
o-o 950 - 959 hPa
o-o < 950 hPa



90W

weathermodels.com
weathermodels.com

No tropical activity
anticipated over the
next 10 days for SE TX.

No other areas of
interest being noted
across the
Atlantic/Gulf.

Houston Pilots Visibility Chart (miles)



Forecast Confidence



Time	Tue 4am	Tue 5am	Tue 6am	Tue 7am	Tue 8am	Tue 9am	Tue 10am	Tue 11am	Tue 12pm	Tue 1pm	Tue 2pm	Tue 3pm	Tue 4pm	Tue 5pm	Tue 6pm	Tue 7pm	Tue 8pm	Tue 9pm	Tue 10pm	Tue 11pm	Wed 12am	Wed 1am	Wed 2am	Wed 3am	Wed 4am	Wed 5am	Wed 6am	Wed 7am	Wed 8am	Wed 9am	Wed 10am	Wed 11am	Wed 12pm	Wed 1pm	Wed 2pm	
610 Bridge	10	10	10	10	10	10	10	10	10	10	10	10	10	10	10	10	10	10	10	10	10	10	10	10	10	10	10	7	10	10	10	10	10	10	10	
Kinder 1	10	10	10	10	10	10	10	10	10	10	10	10	10	10	10	10	10	10	10	10	10	10	10	10	10	10	10	8	10	10	10	10	10	10	10	
Greens Bayou	10	10	10	10	10	10	10	10	10	10	10	10	10	10	10	10	10	10	10	10	10	10	10	10	10	10	10	8	10	10	10	10	10	10	10	
Shell Crude	10	10	10	10	10	10	10	10	10	10	10	10	10	10	10	10	10	10	10	10	10	10	10	10	10	10	10	8	10	10	10	10	10	10	10	
Lynchburg Ferries	10	10	10	10	10	10	10	10	10	10	10	10	10	10	10	10	10	10	10	10	10	10	10	10	10	10	10	8	10	10	10	10	10	10	10	
Exxon 3	10	10	10	10	10	10	10	10	10	10	10	10	10	10	10	10	10	10	10	10	10	10	10	10	10	10	10	10	10	10	10	10	10	10	10	
Morgans Point	10	10	10	10	10	10	10	10	10	10	10	10	10	10	10	10	10	10	10	10	10	10	10	10	10	10	10	10	10	10	10	10	10	10	10	10
75/76	10	10	10	10	10	10	10	10	10	10	10	10	10	10	10	10	10	10	10	10	10	10	10	10	10	10	10	10	10	10	10	10	10	10	10	10
63/64	10	10	10	10	10	10	10	10	10	10	10	10	10	10	10	10	10	10	10	10	10	10	10	10	10	10	10	10	10	10	10	10	10	10	10	10
51/52	10	10	10	10	10	10	10	10	10	10	10	10	10	10	10	10	10	10	10	10	10	10	10	10	10	10	10	10	10	10	10	10	10	10	10	10
37/38	10	10	10	10	10	10	10	10	10	10	10	10	10	10	10	10	10	10	10	10	10	10	10	10	10	10	10	10	10	10	10	10	10	10	10	10
25/26	10	10	10	10	10	10	10	10	10	10	10	10	10	10	10	10	10	10	10	10	10	10	10	10	10	10	10	10	10	10	10	10	10	10	10	10
11/12	10	10	10	10	10	10	10	10	10	10	10	10	10	10	10	10	10	10	10	10	10	10	10	10	10	10	10	10	10	10	10	10	10	10	10	10
1 & 2 Bravo	10	10	10	10	10	10	10	10	10	10	10	10	10	10	10	10	10	10	10	10	10	10	10	10	10	10	10	10	10	10	10	10	10	10	10	9

NOTE: This is automated data that may/may not agree with the official BAM thinking that's found on the daily slides or special visibility report slides. This data should be used as a guide only

Houston Pilots Wind Chart



Forecast Confidence



Example

Sustained wind 13 Knots
Gusts 18 Knots
Wind from the N

WS: 13
G:18
N

Time Knots	Tue 4am	Tue 5am	Tue 6am	Tue 7am	Tue 8am	Tue 9am	Tue 10am	Tue 11am	Tue 12pm	Tue 1pm	Tue 2pm	Tue 3pm	Tue 4pm	Tue 5pm	Tue 6pm	Tue 7pm	Tue 8pm	Tue 9pm	Tue 10pm	Tue 11pm	Wed 12am	Wed 1am	Wed 2am	Wed 3am	Wed 4am	Wed 5am	Wed 6am	Wed 7am	Wed 8am	Wed 9am	Wed 10am	Wed 11am	Wed 12pm	Wed 1pm	Wed 2pm
610 Bridge	4 6 S	3 5 S	3 5 S	3 5 S	4 6 S	5 7 S	6 8 SSW	6 8 SSW	6 9 SSW	5 8 SSW	6 9 S	6 9 S	6 9 S	7 10 SSE	8 11 SSE	8 11 SSE	8 12 SSE	7 10 SSE	8 11 S	7 11 S	7 11 S	7 10 S	6 10 S	6 9 S	5 9 S	4 7 S	4 5 S	3 4 SSW	4 7 S	5 8 SSW	6 9 SSW	6 9 S	6 9 SSE	7 10 SSE	
Kinder 1	4 6 S	3 5 S	3 5 S	3 5 S	4 6 S	5 7 S	6 8 SSW	6 8 SSW	6 9 SSW	5 8 SSW	6 9 S	6 9 S	6 7 SSE	7 10 SSE	8 11 SSE	8 11 SSE	8 11 SSE	7 10 S	7 11 S	7 11 S	7 11 S	7 10 S	6 10 S	6 9 S	5 8 S	4 7 S	4 5 SSW	3 4 SSW	4 7 S	5 8 SSW	6 9 SSW	6 9 S	6 7 SSE	7 10 SSE	
Greens Bayou	4 6 S	3 5 S	3 5 S	3 5 S	4 6 S	5 7 SSW	6 8 SSW	6 8 SSW	6 9 SSW	5 8 SSW	6 9 SSE	6 9 SSE	6 7 SSE	7 10 SSE	8 11 SSE	8 11 SSE	8 11 SSE	7 10 S	7 11 S	7 11 S	7 10 S	6 10 S	6 9 S	5 8 S	4 7 SSW	4 5 SSW	3 4 SSW	4 7 S	5 8 SSW	6 9 SSW	6 9 S	6 7 SSE	7 10 SSE		
Shell Crude	4 6 S	3 5 S	3 5 S	3 5 S	4 6 S	5 7 SSW	6 8 SSW	6 8 SSW	6 9 SSW	5 8 SSW	6 9 SSE	6 7 SSE	7 10 SSE	8 11 SSE	8 11 SSE	8 11 SSE	7 10 S	7 11 S	7 11 S	7 10 S	6 10 S	6 9 S	5 8 S	4 7 SSW	4 5 SSW	3 4 SSW	4 7 S	5 8 SSW	6 9 SSW	6 9 S	6 7 SSE	7 10 SSE			
Lynchburg Ferries	4 6 S	4 6 S	4 6 S	4 6 S	5 7 SSW	5 6 SSW	6 8 SSW	6 8 SSW	6 9 SSW	5 8 SSW	6 9 SSE	7 10 SSE	7 9 SSE	8 11 SSE	9 10 SSE	9 10 SSE	8 11 SSE	8 9 S	8 10 S	8 9 S	8 10 S	7 10 S	7 9 S	6 9 SSW	5 8 SSW	4 5 SSW	4 5 SSW	5 6 SSW	5 6 SSW	6 7 SSW	6 7 SSW	6 7 SSE	7 8 SSE		
Exxon 3	5 7 SSW	5 7 S	5 7 S	5 7 S	5 7 SSW	6 8 SSW	6 8 SSW	6 8 SSW	6 9 SSW	7 8 SSW	8 9 SSE	8 9 SSE	8 11 SSE	9 10 SSE	10 11 SSE	10 11 SSE	9 11 SSE	8 11 S	8 11 S	8 11 S	8 11 S	8 11 S	7 10 SSW	6 9 SSW	6 7 SSW	5 6 SSW	5 6 SSW	6 7 SSW	6 7 SSW	7 8 SSW	7 8 SSW	8 9 SSW	8 9 SSE		
Morgans Point	6 8 S	6 8 S	6 8 S	6 8 S	6 8 SSW	7 8 SSW	7 8 SSW	7 8 SSW	7 8 SSW	7 8 SSW	8 9 SSE	8 9 SSE	9 10 SSE	10 11 SSE	11 12 SSE	11 12 SSE	10 13 S	10 12 S	10 12 S	10 12 S	10 12 S	10 12 S	9 11 SSW	8 10 SSW	8 9 SSW	7 9 SSW	6 8 SSW	6 8 SSW	6 8 SSW	6 8 SSW	6 8 SSW	7 8 SSW	7 8 SSE	8 9 SSE	
75/76	8 9 S	8 9 S	8 9 S	8 9 S	8 9 SSW	8 9 SSW	8 9 SSW	8 9 SSW	8 9 SSW	8 9 SSW	8 9 SSE	8 9 SSE	8 9 SSE	8 9 SSE	8 9 SSE	8 9 SSE	8 9 S	8 9 S	8 9 S	8 9 S	8 9 S	8 9 S	8 9 SSW	8 9 SSW	8 9 SSW	8 9 SSW	8 9 SSW	8 9 SSW	8 9 SSW	8 9 SSW	8 9 SSW	8 9 SSW	8 9 SSW	8 9 SSE	
63/64	9 10 S	9 10 S	9 10 S	9 10 S	9 10 SSW	9 10 SSW	9 10 SSW	9 10 SSW	9 10 SSW	9 10 SSW	9 10 SSE	9 10 SSE	9 10 SSE	9 10 SSE	9 10 SSE	9 10 SSE	9 10 S	9 10 S	9 10 S	9 10 S	9 10 S	9 10 S	9 10 SSW	9 10 SSW	9 10 SSW	9 10 SSW	9 10 SSW	9 10 SSW	9 10 SSW	9 10 SSW	9 10 SSW	9 10 SSW	9 10 SSW	9 10 SSE	
51/52	9 10 S	9 10 S	9 10 S	9 10 S	9 10 SSW	9 10 SSW	9 10 SSW	9 10 SSW	9 10 SSW	9 10 SSW	9 10 SSE	9 10 SSE	9 10 SSE	9 10 SSE	9 10 SSE	9 10 SSE	9 10 S	9 10 S	9 10 S	9 10 S	9 10 S	9 10 S	9 10 SSW	9 10 SSW	9 10 SSW	9 10 SSW	9 10 SSW	9 10 SSW	9 10 SSW	9 10 SSW	9 10 SSW	9 10 SSW	9 10 SSW	9 10 SSE	
37/38	8 9 S	8 9 S	8 9 S	8 9 S	8 9 SSW	8 9 SSW	8 9 SSW	8 9 SSW	8 9 SSW	8 9 SSW	8 9 SSE	8 9 SSE	8 9 SSE	8 9 SSE	8 9 SSE	8 9 SSE	8 9 S	8 9 S	8 9 S	8 9 S	8 9 S	8 9 S	8 9 SSW	8 9 SSW	8 9 SSW	8 9 SSW	8 9 SSW	8 9 SSW	8 9 SSW	8 9 SSW	8 9 SSW	8 9 SSW	8 9 SSW	8 9 SSE	
25/26	8 9 S	8 9 S	8 9 S	8 9 S	8 9 SSW	8 9 SSW	8 9 SSW	8 9 SSW	8 9 SSW	8 9 SSW	8 9 SSE	8 9 SSE	8 9 SSE	8 9 SSE	8 9 SSE	8 9 SSE	8 9 S	8 9 S	8 9 S	8 9 S	8 9 S	8 9 S	8 9 SSW	8 9 SSW	8 9 SSW	8 9 SSW	8 9 SSW	8 9 SSW	8 9 SSW	8 9 SSW	8 9 SSW	8 9 SSW	8 9 SSW	8 9 SSE	
11/12	8 9 S	8 9 S	8 9 S	8 9 S	8 9 SSW	8 9 SSW	8 9 SSW	8 9 SSW	8 9 SSW	8 9 SSW	8 9 SSE	8 9 SSE	8 9 SSE	8 9 SSE	8 9 SSE	8 9 SSE	8 9 S	8 9 S	8 9 S	8 9 S	8 9 S	8 9 S	8 9 SSW	8 9 SSW	8 9 SSW	8 9 SSW	8 9 SSW	8 9 SSW	8 9 SSW	8 9 SSW	8 9 SSW	8 9 SSW	8 9 SSW	8 9 SSE	
1 & 2 Bravo	10 11 S	10 11 S	10 11 S	10 11 S	10 11 SSW	10 11 SSW	10 11 SSW	10 11 SSW	10 11 SSW	10 11 SSW	10 11 SSE	10 11 SSE	10 11 SSE	10 11 SSE	10 11 SSE	10 11 SSE	10 11 S	10 11 S	10 11 S	10 11 S	10 11 S	10 11 S	10 11 SSW	10 11 SSW	10 11 SSW	10 11 SSW	10 11 SSW	10 11 SSW	10 11 SSW	10 11 SSW	10 11 SSW	10 11 SSW	10 11 SSW	10 11 SSE	

NOTE: This is automated data that may/may not agree with the official BAM thinking that's found on the daily slides. This data should be used as a guide only

Forecast Discussion

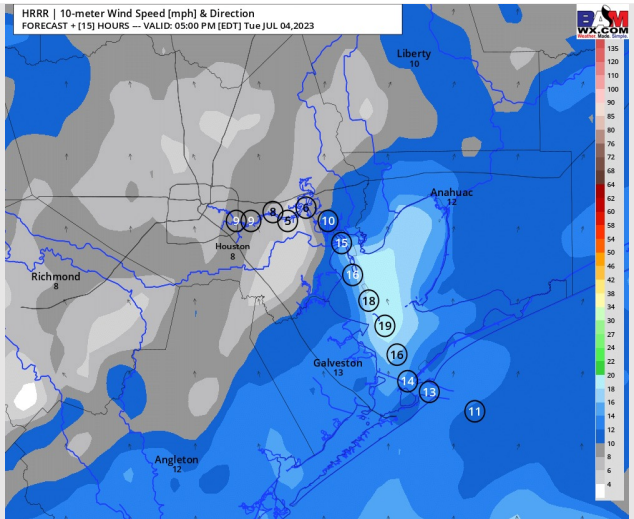
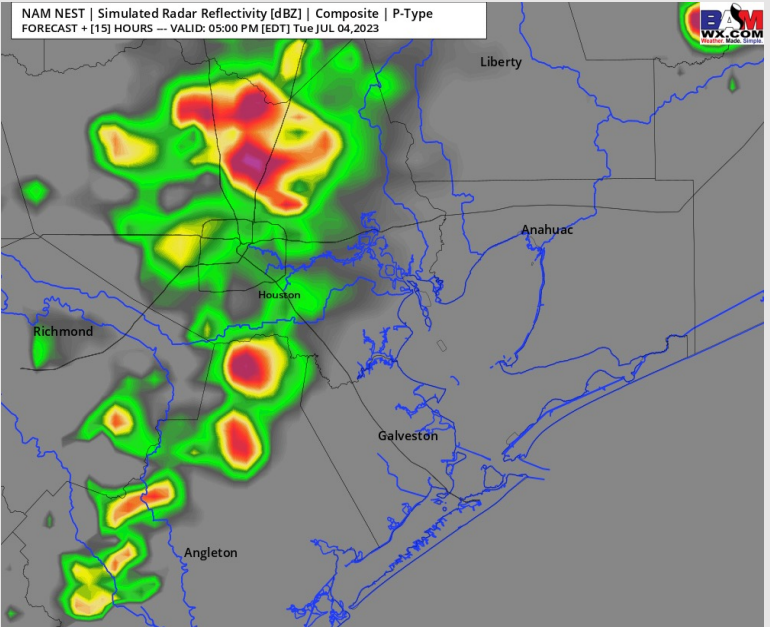
Precip: Favoring hit/miss pop up (20-30%) showers this morning until 12 PM. Chances pick up to (40-50%) between 2 PM and 7 PM with the possibility of some thunderstorms working through. Largest risk of thunderstorms will be between 3 PM and 5 PM with the largest coverage to the N and W.

Wind: Winds will be out of the S/SW throughout the day today. Winds N of Morgan's Point will be at 3- 8 kts throughout the day. Stations S of Morgan's Point will see winds of 8 - 13 kts until 10 AM when then winds will decrease down to 3 - 8 kts until 1 PM. After winds will pick up to 15-20 kts for the rest of the day. **Gusts of 25-30 kts will be possible under the strongest cells today.**

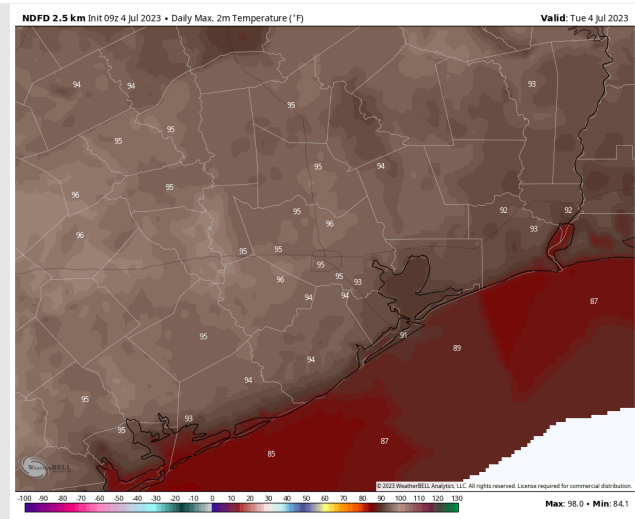
Temps: High temps today will be in the mid 80s F at the Boarding Station, low/mid 90s F for other Stations S of Morgan's Point and mid 90s N of Morgan's Point.

Visibility: Not anticipating any visibility concerns at this time.

Precip Image: 4 PM CT



**Wind Speed:
4 PM CT**



**High Temps
Today**

Houston Pilots: Wed. 7/5/2023



Forecast Discussion

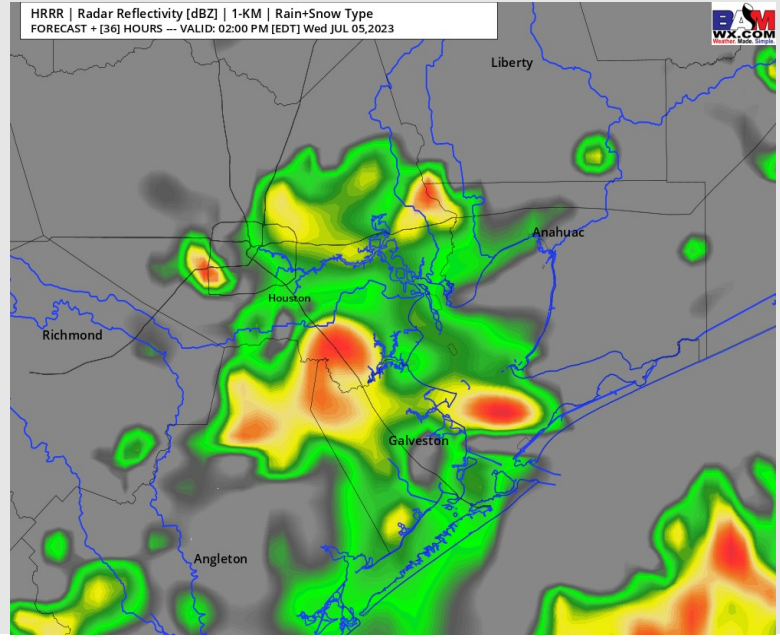
Precip: Favoring mostly dry conditions throughout the morning Wednesday aside for a 10-20% chance for a few isolated showers before 10 AM. After 10 AM a 60-70% chance of scattered showers will exist through 7 PM.

Wind: Winds will be out of the S/SW throughout the day Wednesday. Winds will be at 4 – 9 kts for Stations N of Morgan’s Point throughout the day today. Winds S of Morgan’s Point will be at 11 – 16 kts with winds near 14 -19 kts near the boarding station through 8 AM. After 8 AM winds will decrease down to 4 – 9 kts for the rest of the day. **Gusts of 25-30 kts will be possible under the strongest cells Wednesday.**

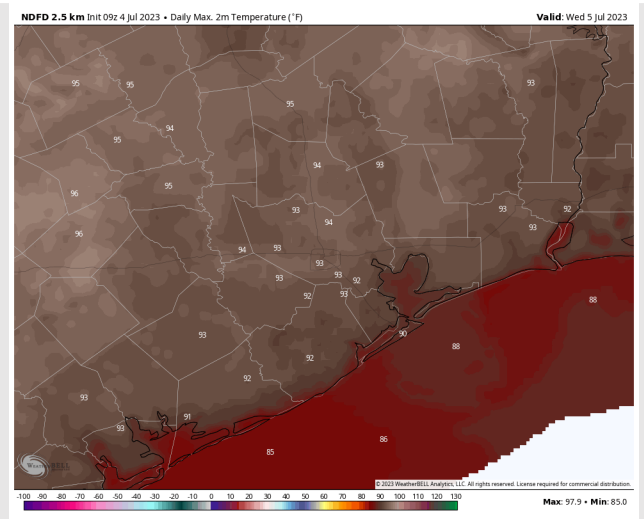
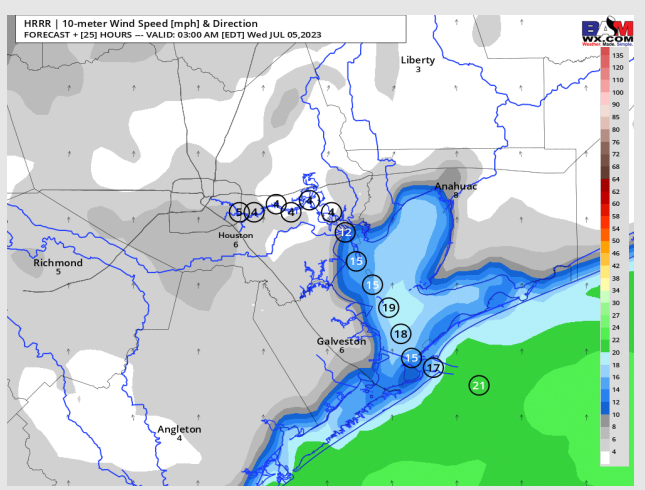
Temps: Temps will be in the mid/upper 80s F for Stations S of Morgan’s Point and in the mid 90s F N of Morgan’s Point.

Visibility: Not anticipating any visibility concerns at this time.

Precip Image: 1 PM CT



**Wind Speed:
2 AM CT**



**High Temps
Wednesday**

Forecast Discussion

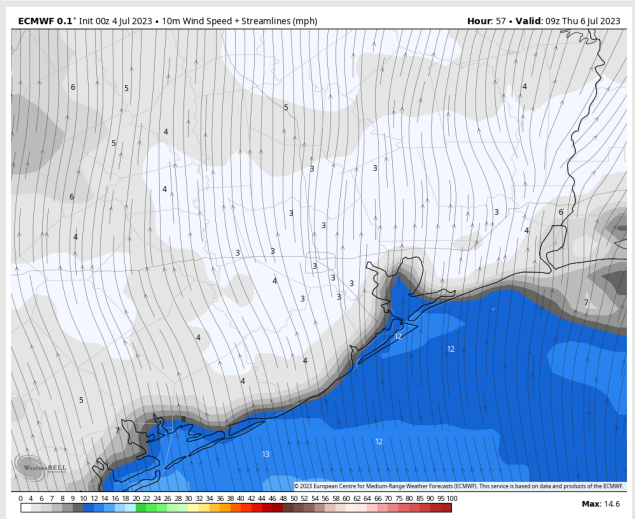
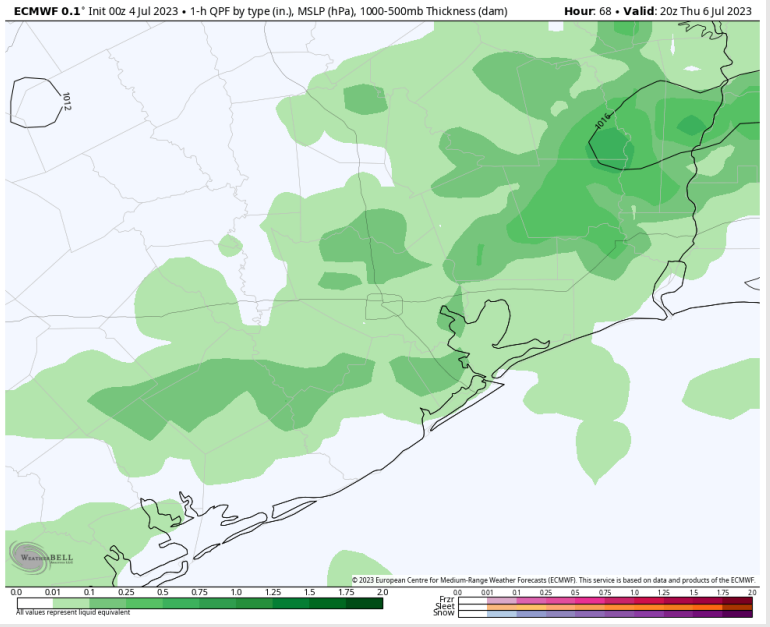
Precip: Starting at 2 AM, favoring a 50-60% chance for scattered showers/thunderstorms lasting through 9 AM. Then after 9 AM, favoring coverage to become more hit/miss (20-30%) through 2 PM. After 2 PM, favoring a (50-60%) chance of another round of showers/thunderstorms until 5 PM when then chances will become more hit/miss (20-30%) until 8 PM then will dry out after for the rest of the day.

Wind: Winds will be out of the S/SW throughout the day Thursday. Winds N of Morgan's Point will be 3-8 kts throughout the day. Winds S of Morgan's Point will be 6-11 kts throughout the day Thursday. **Wind gusts of 20-25+ kts will be possible under the strongest cells Thursday.**

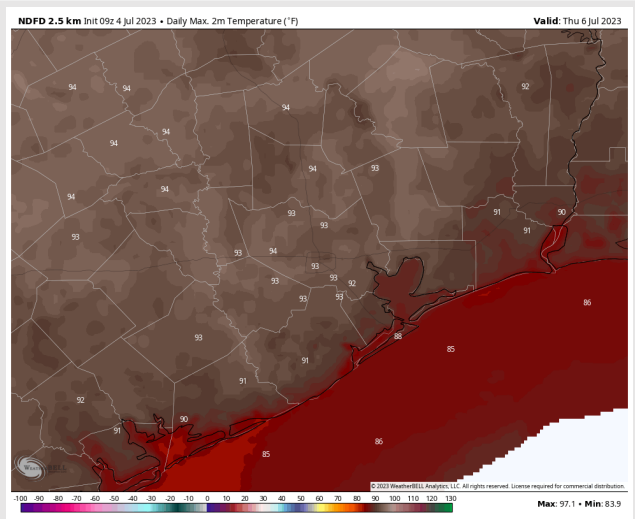
Temps: High temperatures Thursday will be in the mid 80s F near the Boarding Station, in the upper 80s F/low 90s F for all other stations S of Morgan's Point, and in the low 90s for stations N of Morgan's Point.

Visibility: Not anticipating any visibility concerns at this time.

Precip Image: 3 PM CT

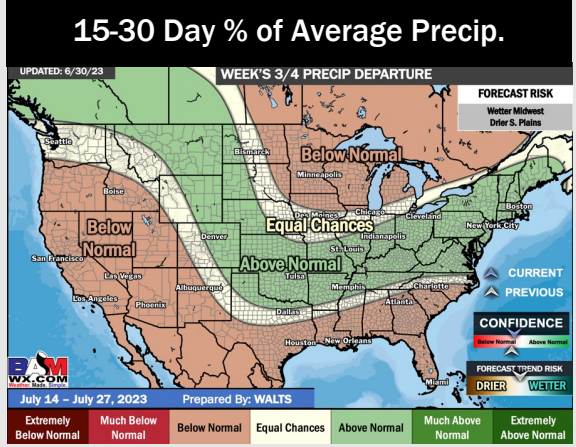
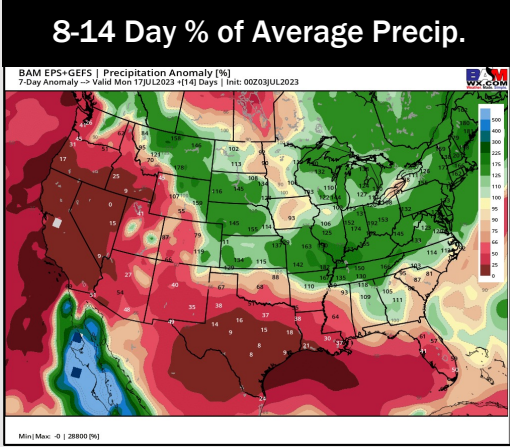
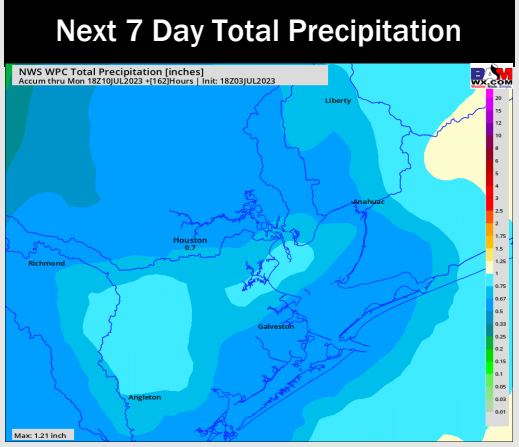
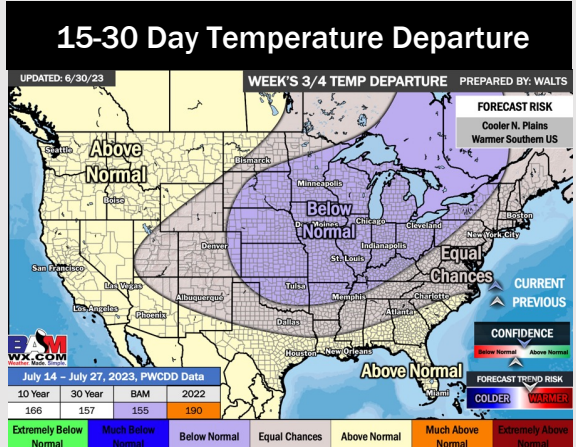
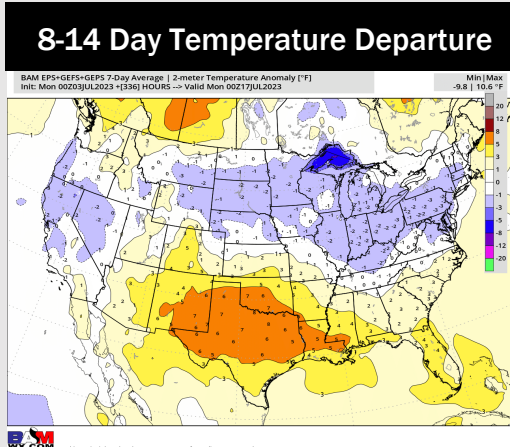
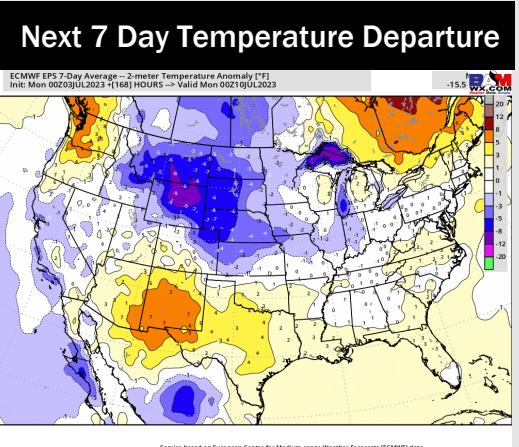


**Wind Speed:
4 AM CT**



**High Temps
Thursday**

Houston Pilots: 7/4/23



- Slightly above normal temperatures are favored over the next week. Below normal precipitation chances are favored for the majority of this week, with a few low-end rain chances present.
- Expecting below normal precipitation chances and slightly above normal temperatures for the week 2 timeframe.
- Above normal temperatures and below normal chances for precipitation are favored in the weeks 3/4 timeframe.