

Houston Pilots Forecast Package

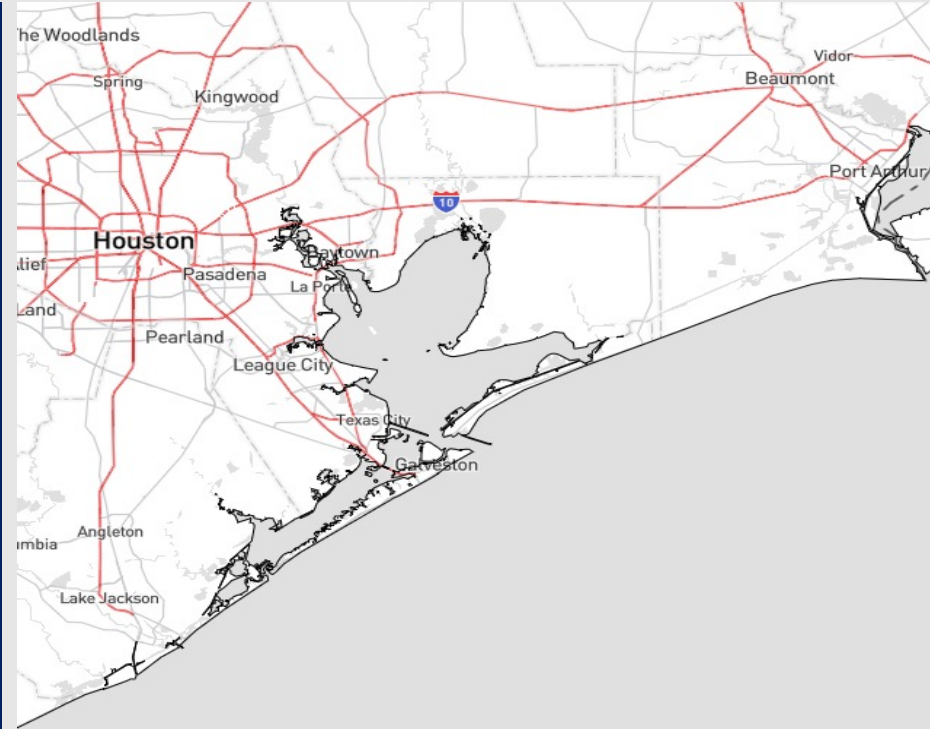


Updated: 5:00 AM CT
Tuesday, July 25, 2023

Forecaster: Xander Lowry

Weather Headlines

- Pop-up chances will continue to be possible over the next few days.
- Excessive heat concerns (90+ F) to continue throughout at least next week.
- No active tropical threats to SE TX for next 7-10 days. Weak disturbance near Lesser Antilles to not pose a threat.
- Low end patchy fog risks will be dependent on locations impacted by rain/storms.



Radar/NWS Alerts: 5:00 AM CT



As always, please do not hesitate to reach out to us with any forecast questions via the chat option on the Weather Porthole or our on-call number, **(317)-560-8122** press 1 for forecast questions.

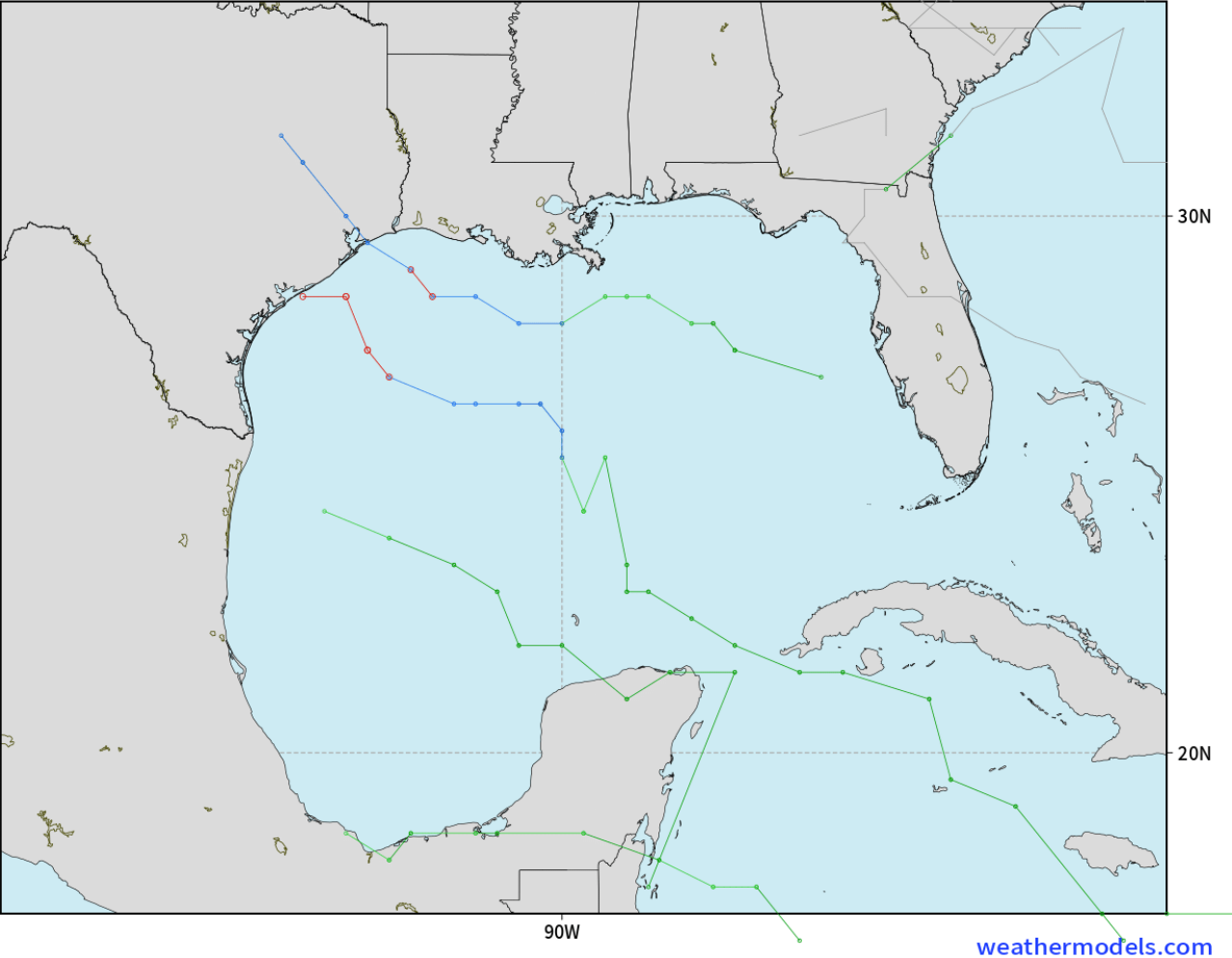
Houston Pilots Tropical Update



American Model Low Pressure Tracks Next 10-Days

NOAA GEFSv12 | All Ensemble Cyclones +240 Hours
INIT: 00Z25JUL2023 --> UNTIL 00Z04AUG2023

o-o > 1010 hPa
o-o 1000 - 1010 hPa
o-o 980 - 999 hPa
o-o 960 - 979 hPa
o-o 950 - 959 hPa
o-o < 950 hPa



No tropical activity anticipated over the next 10 days for SE TX.

Activity near Lesser Antilles continues to remain fairly weak, and if any further development occurs will remain to the east of the Gulf of Mexico

Houston Pilots Visibility Chart (miles)



Forecast Confidence



Time	Tue 3am	Tue 4am	Tue 5am	Tue 6am	Tue 7am	Tue 8am	Tue 9am	Tue 10am	Tue 11am	Tue 12pm	Tue 1pm	Tue 2pm	Tue 3pm	Tue 4pm	Tue 5pm	Tue 6pm	Tue 7pm	Tue 8pm	Tue 9pm	Tue 10pm	Tue 11pm	Wed 12am	Wed 1am	Wed 2am	Wed 3am	Wed 4am	Wed 5am	Wed 6am	Wed 7am	Wed 8am	Wed 9am	Wed 10am	Wed 11am	Wed 12pm	Wed 1pm	Wed 2pm
610 Bridge	10	10	10	10	7	10	10	10	10	10	10	10	10	10	10	10	10	10	10	10	10	10	10	10	10	10	10	10	8	10	10	10	10	10	10	10
Kinder 1	10	10	10	10	7	10	10	10	10	10	10	10	10	10	10	10	10	10	10	10	10	10	10	10	10	10	10	10	8	10	10	10	10	10	10	10
Greens Bayou	10	10	10	10	7	10	10	10	10	10	10	10	10	10	10	10	10	10	10	10	10	10	10	10	10	10	10	10	8	10	10	10	10	10	10	10
Shell Crude	10	10	10	10	7	10	10	10	10	10	10	10	10	10	10	10	10	10	10	10	10	10	10	10	10	10	10	10	8	10	10	10	10	10	10	10
Lynchburg Ferries	10	10	10	10	7	10	10	10	10	10	10	10	10	10	10	10	10	10	10	10	10	10	10	10	10	10	10	10	8	10	10	10	10	10	10	10
Exxon 3	10	10	10	10	7	10	10	10	10	10	10	10	10	10	10	10	10	10	10	10	10	10	10	10	10	10	10	10	10	10	10	10	10	10	10	10
Morgans Point	10	10	10	10	7	10	10	10	10	10	10	10	10	10	10	10	10	10	10	10	10	10	10	10	10	10	10	10	10	10	10	10	10	10	10	10
75/76	10	10	10	10	7	10	10	10	10	10	10	10	10	10	10	10	10	10	10	10	10	10	10	10	10	10	10	10	10	10	10	10	10	10	10	10
63/64	10	10	10	10	7	10	10	10	10	10	10	10	10	10	10	10	10	10	10	10	10	10	10	10	10	10	10	10	10	10	10	10	10	10	10	10
51/52	10	10	10	10	10	10	10	10	10	10	10	10	10	10	10	10	10	10	10	10	10	10	10	10	10	10	10	10	10	10	10	10	10	10	10	10
37/38	10	10	10	10	10	10	10	10	10	10	10	10	10	10	10	10	10	10	10	10	10	10	10	10	10	10	10	10	10	10	10	10	10	10	10	10
25/26	10	10	10	10	10	10	10	10	10	10	10	10	10	10	10	10	10	10	10	10	10	10	10	10	10	10	10	10	10	10	10	10	10	10	10	10
11/12	10	10	10	10	10	10	10	10	10	10	10	10	10	10	10	10	10	10	10	10	10	10	10	10	10	10	10	10	10	10	10	10	10	10	10	10
1 & 2 Bravo	10	10	10	10	10	10	10	10	10	10	10	10	10	10	10	10	10	10	10	10	10	10	10	10	10	10	10	10	10	10	10	10	10	10	10	10

NOTE: This is automated data that may/may not agree with the official BAM thinking that's found on the daily slides or special visibility report slides. This data should be used as a guide only

Houston Pilots Wind Chart



Forecast Confidence



Example

Sustained wind 13 Knots
Gusts 18 Knots
Wind from the N

WS: 13
G:18
N

Time Knots	Tue 3am	Tue 4am	Tue 5am	Tue 6am	Tue 7am	Tue 8am	Tue 9am	Tue 10am	Tue 11am	Tue 12pm	Tue 1pm	Tue 2pm	Tue 3pm	Tue 4pm	Tue 5pm	Tue 6pm	Tue 7pm	Tue 8pm	Tue 9pm	Tue 10pm	Tue 11pm	Wed 12am	Wed 1am	Wed 2am	Wed 3am	Wed 4am	Wed 5am	Wed 6am	Wed 7am	Wed 8am	Wed 9am	Wed 10am	Wed 11am	Wed 12pm	Wed 1pm	Wed 2pm
610 Bridge	0	1	2	2	2	3	3	4	4	3	3	6	7	8	10	9	9	8	7	6	5	5	5	4	4	2	2	2	2	2	3	4	4	4	4	5
	ENE	SE	S	S	S	S	S	S	S	S	SE	SE	SE	SSE	SSE	SSE	SSE	SSE	S	S	S	S	S	S	S	S	S	S	S	S	S	S	S	S	SSE	SSE
Kinder 1	1	1	2	2	2	3	3	4	4	3	4	7	8	8	10	9	9	8	7	6	5	5	5	4	4	2	2	2	2	2	3	4	4	4	4	6
	NE	SE	SSE	S	S	S	S	S	S	SSE	SE	SE	SE	SSE	SSE	SSE	SSE	SSE	S	S	S	S	S	S	S	S	S	S	S	S	S	S	S	S	SSE	SSE
Greens Bayou	1	1	2	2	2	3	3	4	4	3	4	6	7	9	9	10	9	8	7	6	5	5	5	4	4	3	2	2	2	3	4	4	4	4	6	
	E	SE	SSE	S	S	S	S	S	S	SSE	SE	SE	SE	SSE	SSE	SSE	SSE	SSE	S	S	S	S	S	S	S	S	S	S	S	S	S	S	S	S	SSE	SSE
Shell Crude	1	1	1	2	2	3	3	4	4	5	7	8	9	10	10	9	8	7	6	5	5	5	5	4	4	2	2	2	3	3	4	4	5	5	7	
	NE	ESE	SSE	S	S	SSW	S	S	S	SE	SE	SE	SE	SE	SSE	SSE	SSE	SSE	S	S	S	S	S	S	S	S	S	S	S	S	S	S	S	S	SSE	SSE
Lynchburg Ferries	1	1	1	3	2	2	4	5	5	6	7	9	10	11	11	10	10	8	7	6	5	5	5	5	4	3	2	2	3	4	4	5	5	7		
	ENE	E	SE	S	S	SSW	S	S	SSE	SE	SE	SE	SSE	SSE	SSE	SSE	SSE	SSE	S	S	S	S	S	S	S	S	S	S	S	S	S	S	S	S	SSE	SSE
Exxon 3	1	0	1	3	3	2	4	5	6	7	8	9	11	12	11	11	10	9	8	7	6	6	6	5	5	4	3	3	4	4	5	6	6	7		
	E	SE	SE	S	SSW	SSW	S	S	SSE	SSE	SSE	SSE	SSE	SSE	SSE	SSE	SSE	SSE	S	S	S	S	S	S	S	S	S	S	S	S	S	S	S	S	SSE	SSE
Morgans Point	1	1	1	3	3	3	4	5	6	7	9	11	12	13	12	12	11	10	9	8	7	7	7	6	5	4	3	4	4	5	6	6	7	7	9	
	SSE	SW	SSW	SSW	SSW	SSW	SSW	S	SSE	SE	SE	SSE	SSE	SSE	SSE	SSE	SSE	S	S	S	S	S	S	S	S	S	S	S	S	S	S	S	S	S	SSE	SSE
75/76	1	2	1	3	5	4	4	4	7	9	10	12	14	15	13	13	12	11	9	9	9	9	8	7	7	6	5	4	4	5	6	6	8	10		
	W	WSW	WSW	SSW	SSW	SSW	S	SSE	SE	SE	SE	SSE	SSE	SSE	SSE	S	S	S	S	S	S	S	S	S	S	S	S	S	S	S	S	S	S	S	SSE	SSE
63/64	2	2	2	4	6	5	3	4	8	9	10	11	13	15	13	13	12	10	9	9	9	9	9	8	7	6	5	4	4	5	6	7	8	10		
	W	WSW	SW	SSW	SSW	SSW	SSW	S	SSE	SSE	SSE	SSE	SSE	SSE	SSE	S	S	S	S	S	S	S	S	S	S	S	S	S	S	S	S	S	S	S	SSE	SSE
51/52	2	2	2	5	6	5	4	5	7	8	8	10	12	14	13	12	12	11	9	8	8	8	8	8	7	6	5	4	4	4	4	5	7	9		
	WSW	WSW	SSW	S	SSW	SSW	S	S	SSE	SSE	SSE	SSE	SSE	SSE	SSE	S	S	S	S	S	S	S	S	S	S	S	S	S	S	S	S	S	S	S	SSE	SSE
37/38	2	1	3	7	6	5	5	5	7	6	7	9	11	13	13	11	10	9	8	7	8	8	8	8	7	6	5	4	3	4	4	4	6	7	9	
	SW	SW	S	SSW	SSW	SSW	SSW	S	SSE	SSE	SSE	SSE	SSE	S	S	S	S	S	S	S	S	S	S	S	S	S	S	S	S	S	S	S	S	S	SSE	SSE
25/26	1	2	4	6	5	5	5	5	7	6	7	8	10	12	12	9	9	8	7	6	7	7	7	7	6	6	5	4	3	3	4	6	7	8		
	S	SSW	S	SSW	SSW	SSW	S	S	SSE	SSE	SSE	SSE	SSE	S	S	S	S	S	S	S	S	S	S	S	S	S	S	S	S	S	S	S	S	S	SSE	SSE
11/12	2	3	6	6	5	5	6	5	7	5	6	8	9	11	11	8	8	7	7	6	7	7	7	7	6	6	5	4	4	4	4	6	7	8		
	SSE	S	S	S	SSW	SSW	S	S	SSE	SSE	SSE	SSE	S	S	S	S	S	S	S	S	S	S	S	S	S	S	S	S	S	S	S	S	S	S	SSE	SSE
1 & 2 Bravo	3	4	8	8	7	6	7	5	7	5	5	6	8	11	12	9	8	8	7	7	8	7	8	8	8	7	6	5	5	4	4	5	6	7		
	S	S	S	S	S	S	S	S	S	S	SSE	SSE	S	S	S	S	S	S	S	S	S	S	S	S	S	S	S	S	S	S	S	S	S	S	SSE	SSE

NOTE: This is automated data that may/may not agree with the official BAM thinking that's found on the daily slides. This data should be used as a guide only

Houston Pilots: Tue. 7/25/2023



Forecast Discussion

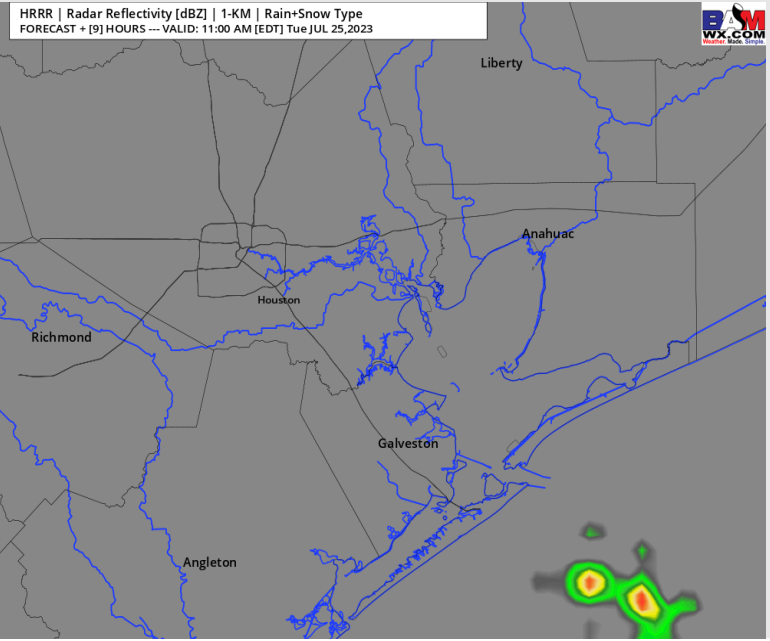
Precip: Favoring mostly dry conditions throughout the day, aside from two windows. A 20% chances of showers/thunderstorms near the boarding station between 9 AM - 12 PM and a isolated chance of showers/thunderstorms between 4-5 PM.

Wind: Winds will be variable until 9 AM. Then after 9 AM winds will be out of the SE/S for the rest of the day. Winds for Stations N of Morgan's Point will be at 2-7 kts until 3 PM. After 3 PM, winds N of Morgan's Point will increase to 8-13 kts until 7 PM when then winds will decrease to 4-9 kts for the rest of the day. Winds for Stations S of Morgan's Point will be 3-8 kts until 12 PM. After 12 PM, winds will increase to 14-18 kts for the remainder of the evening. **Wind gusts of 21 - 26 kts will be possible under the strongest cells Tuesday. Wind gusts of 15-20 kts are possible for all stations after 4 PM.**

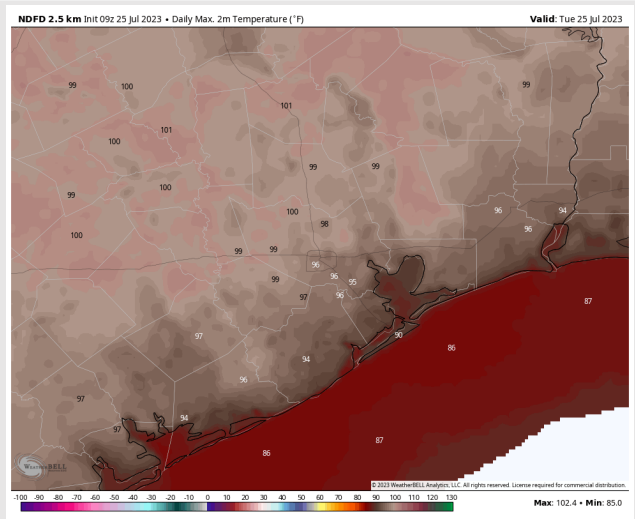
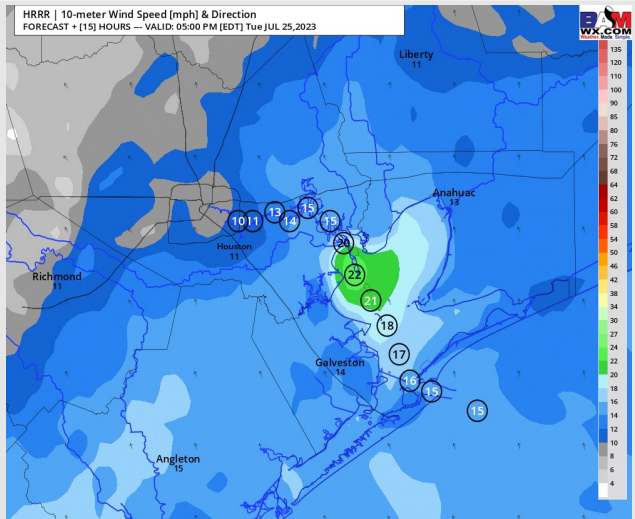
Temps: High temps today will be in the mid/upper 80s F for the Boarding Station, low/mid 90s F for all other Stations S of Morgan's Point, and upper 90s N of Morgan's Point.

Visibility: Not anticipating any visibility concerns at this time.

Precip Image: 10 AM CT



**Wind Speed:
4 PM CT**



**High Temps
Today**

Houston Pilots: Wed. 7/26/2023



Forecast Discussion

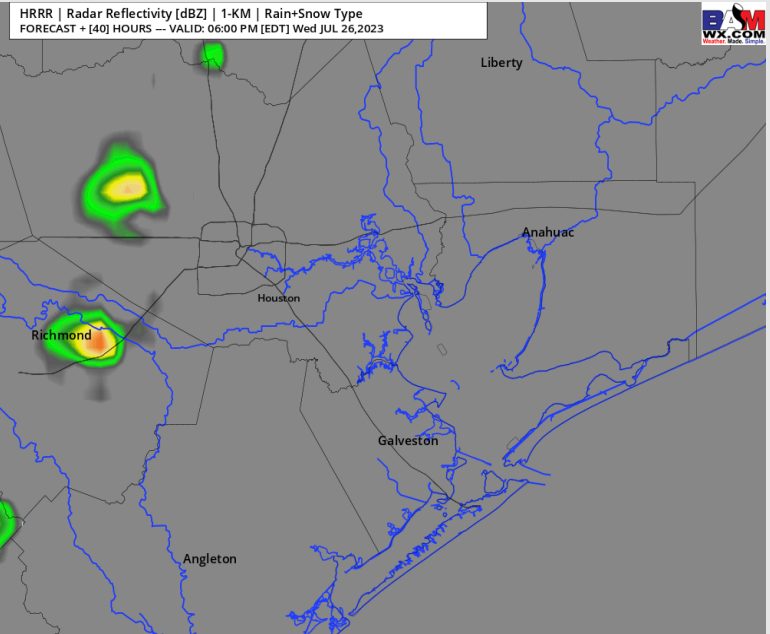
Precip: Favoring dry conditions for majority of the day Wednesday aside from a 10% chance for isolated showers between 3-6 PM.

Wind: Winds will be out of the S/SW throughout the day. Winds for Stations N of Morgan's Point will be at 2-7 kts until 3 PM, after which time they will increase to 8-13 kts until 7 PM when then winds will decrease to 4-9 kts for the rest of the evening. Winds S of Morgan's Point will be at 5-10 kts until 7 AM, then calming to 3-8 kts until 1 PM, before picking back up to 13-18 kts for the remainder of the day.

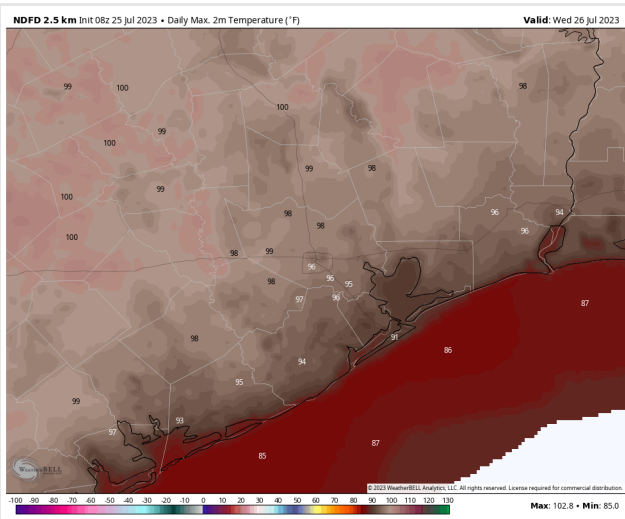
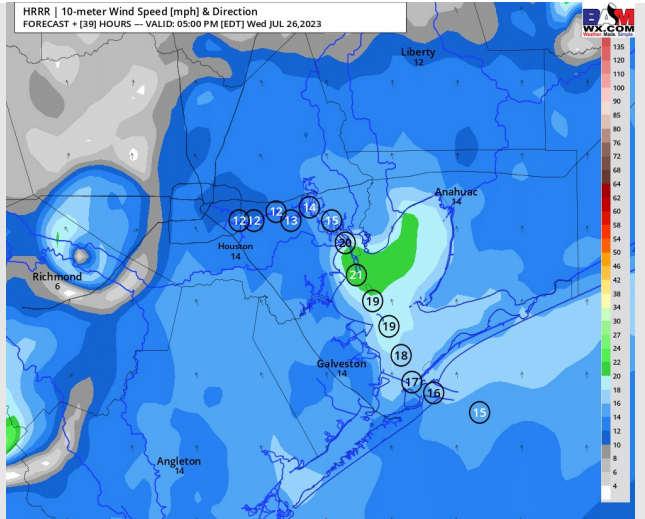
Temps: High temperatures Wednesday will be in the mid/upper 80s F for the Boarding Station, low/mid 90s F for all other Stations S of Morgan's Point and in the upper 90s N of Morgan's Point.

Visibility: Not anticipating any visibility concerns at this time.

Precip Image: 5 PM CT



Wind Speed:
4 PM CT



High Temps
Wednesday

Houston Pilots: Thu. 7/27/2023



Forecast Discussion

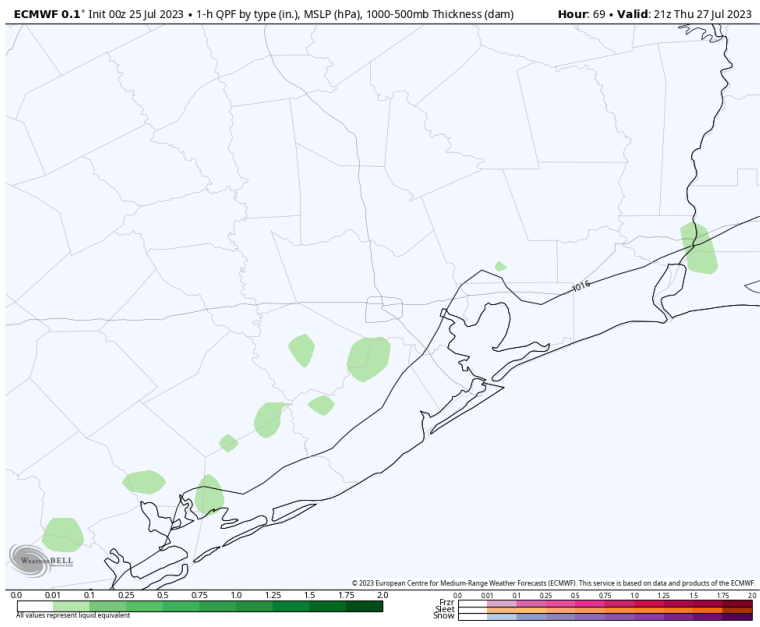
Precip: Favoring mostly dry conditions aside from a 10-20% chance of isolated showers/thunderstorms between 3 – 6 PM.

Wind: Winds will be out of the S/SE throughout the day for all stations. For stations N of Morgan’s Point, winds of 2-7kts will continue through 4 PM. After 4 PM winds will increase slightly to 6 -11 kts for the rest of the day. For stations S of Morgan’s point winds will be 6–11 kts until 6 AM when then winds will decrease to 2 – 7 kts until 3 PM. After 3 PM winds will increase to 7 -12 kts for the rest of the day.

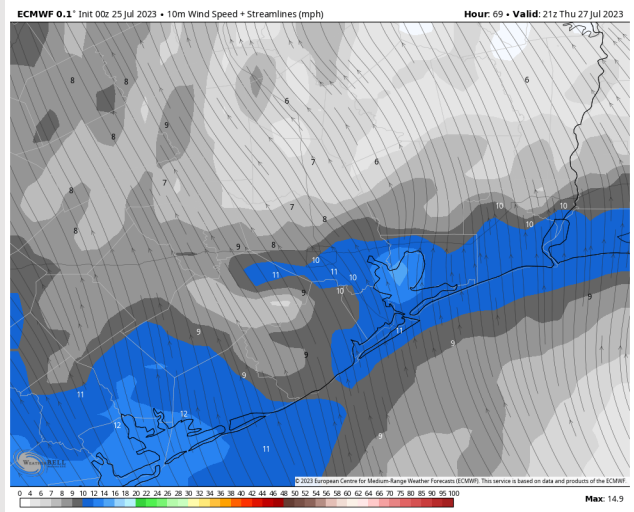
Temps: High temperatures Thursday will be in the mid/upper 80s F for the Boarding Station, low/mid 90s F for all other Stations S of Morgan’s Point and in the upper 90s N of Morgan’s Point.

Visibility: Not anticipating any visibility concerns at this time.

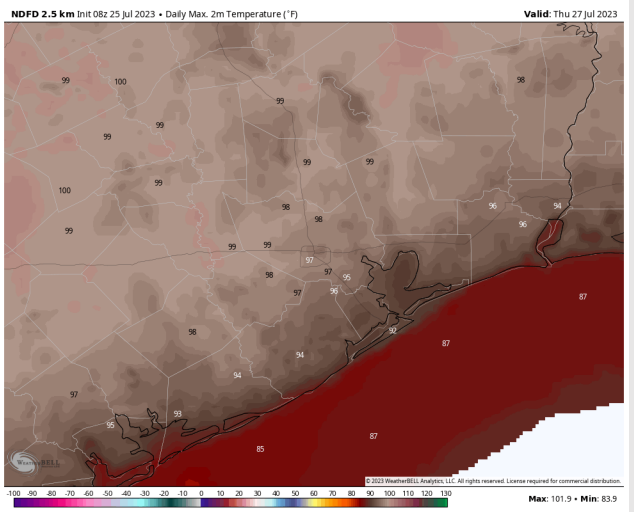
Precip Image: 4 PM CT



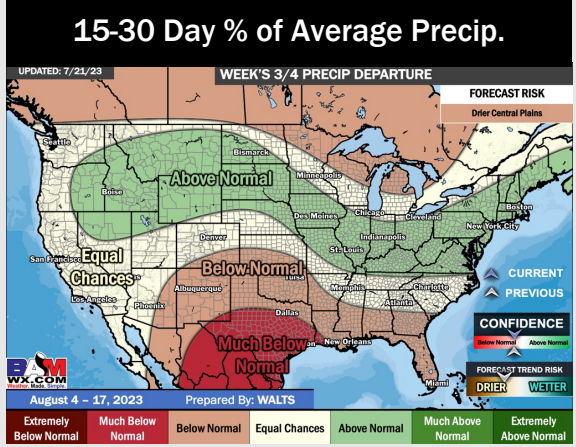
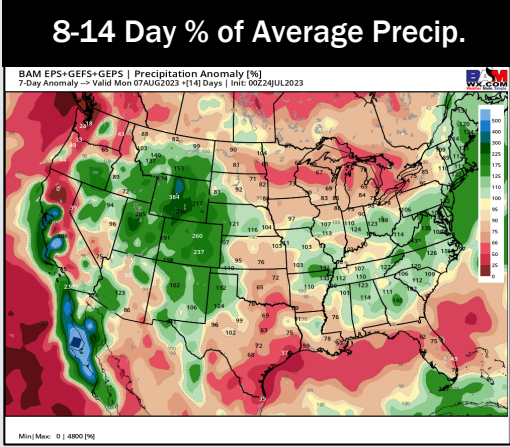
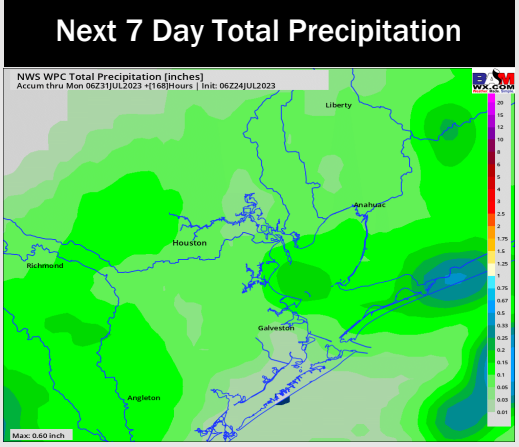
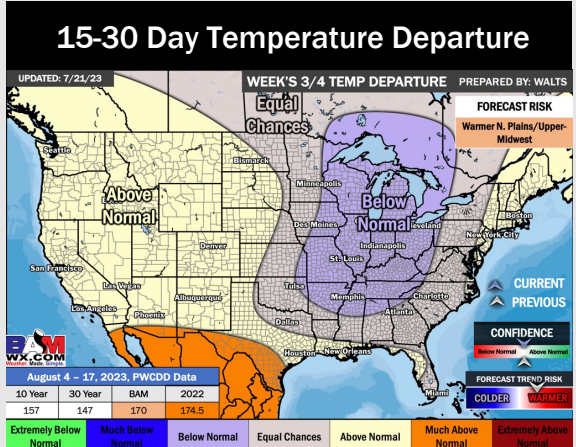
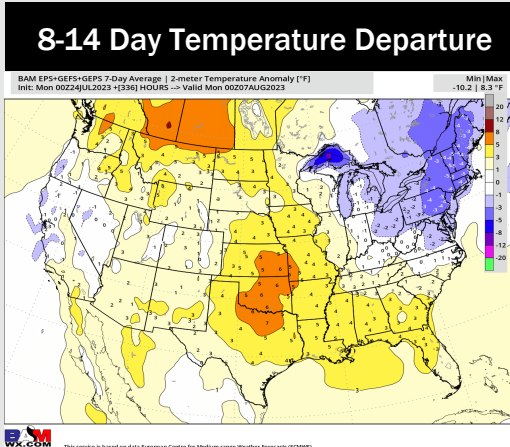
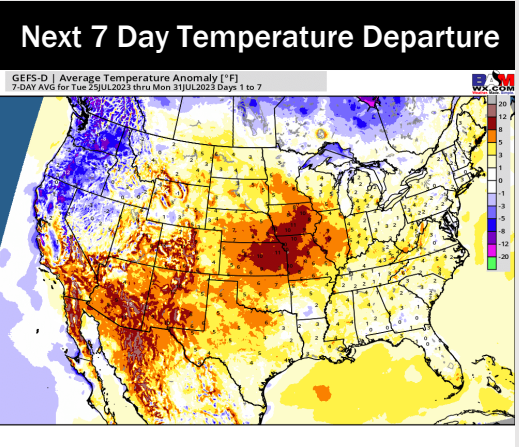
Wind Speed:
4 PM CT



High Temps
Thursday



Houston Pilots: 7/25/23



- Above normal temperatures are favored over the next week. Anticipating low-end rain chances to be possible for the area over the next few days.
- Expecting much below normal precipitation chances and above normal temperatures for the week 2 timeframe.
- Above normal temperatures and much below normal chances for precipitation are favored in the weeks 3/4 timeframe.