

Houston Pilots Forecast Package

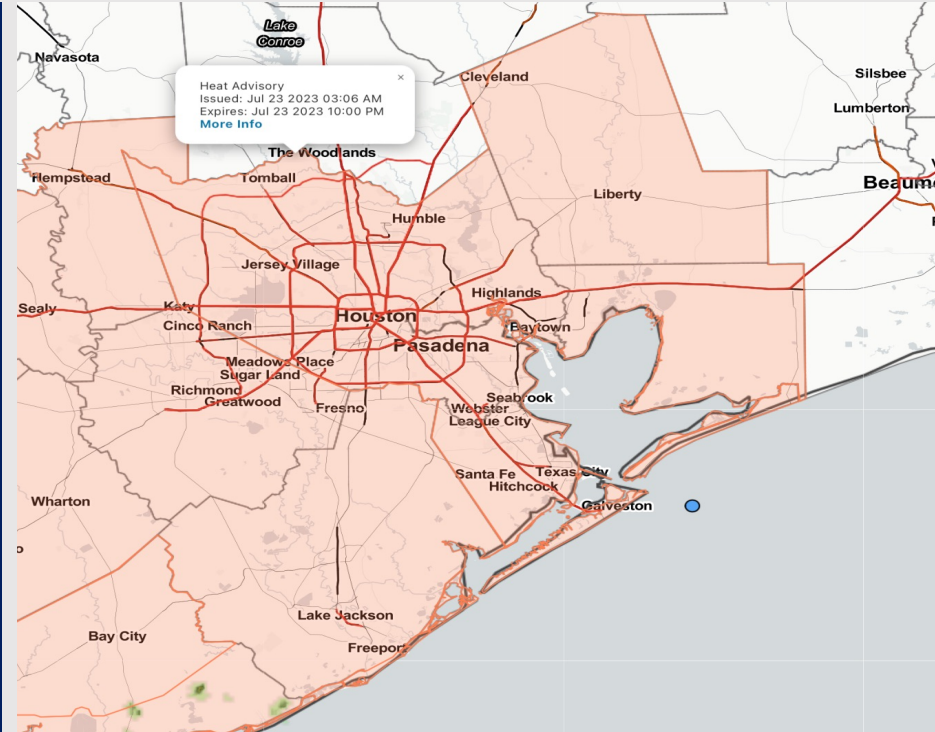


Updated: 12:40 PM CT
Sunday, July 23, 2023

Forecaster: Tyler Riggles

Weather Headlines

- Better rain chances will be present today, before making way for continued dry conditions in the early week.
- Excessive heat concerns (90+ F) to continue throughout at least next week.
- No active tropical threats to SE TX at this time.
- Not anticipating any risks for fog going forward.



Radar/NWS Alerts: 12:40 PM CT



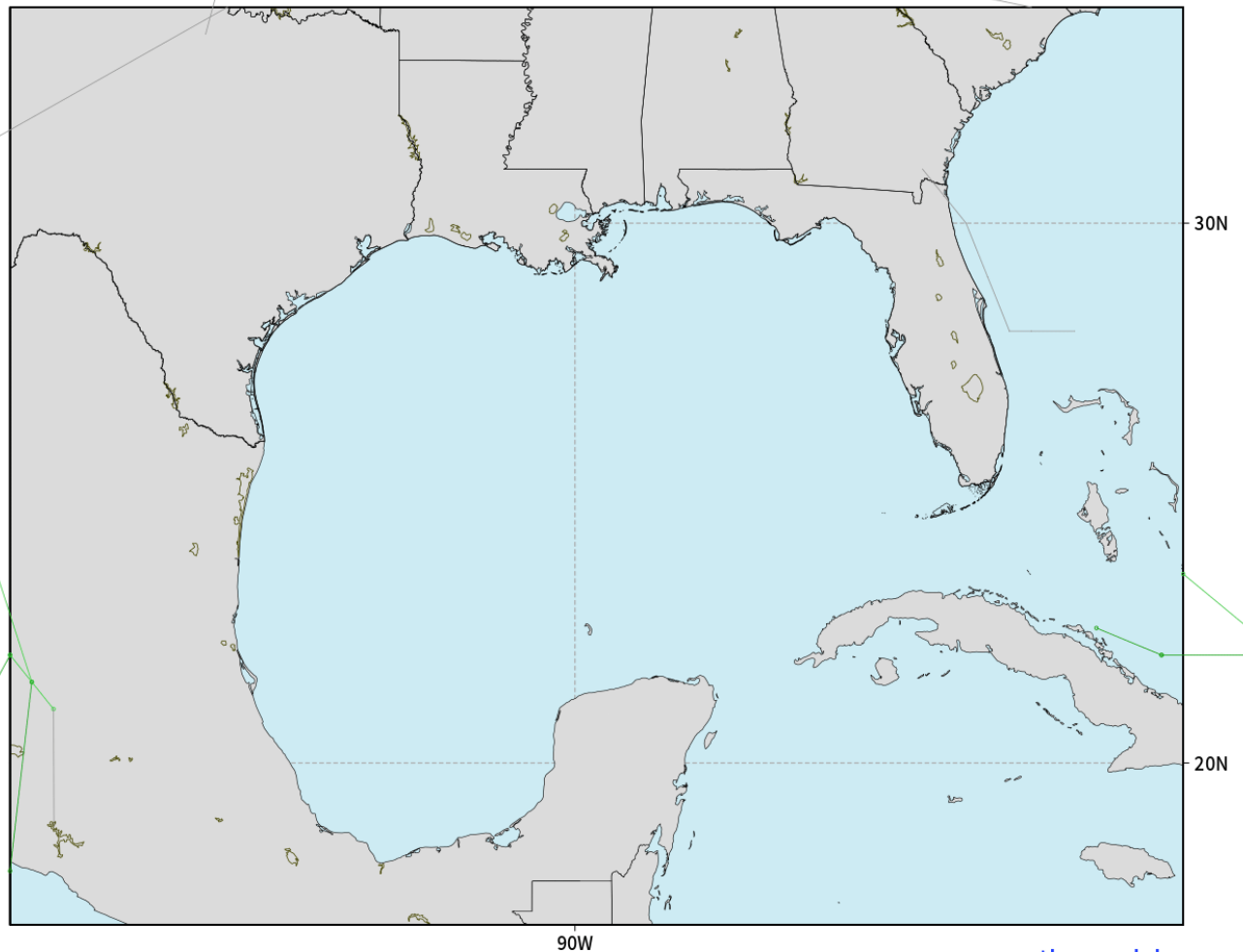
As always, please do not hesitate to reach out to us with any forecast questions via the chat option on the Weather Porthole or our on-call number, **(317)-560-8122** press 1 for forecast questions.

Houston Pilots Tropical Update

American Model Low Pressure Tracks Next 10-Days

NOAA GFSv12 | All Ensemble Cyclones +240 Hours
INIT: 06Z23JUL2023 --> UNTIL 06Z02AUG2023

o-o > 1010 hPa
o-o 1000 - 1010 hPa
o-o 980 - 999 hPa
o-o 960 - 979 hPa
o-o 950 - 959 hPa
o-o < 950 hPa



weathermodels.com

No tropical activity anticipated over the next 10 days for SE TX.

No other areas of interest being noted across the Atlantic/Gulf.

Houston Pilots Visibility Chart (miles)



Forecast Confidence



| Time | Sun 12pm | Sun 1pm | Sun 2pm | Sun 3pm | Sun 4pm | Sun 5pm | Sun 6pm | Sun 7pm | Sun 8pm | Sun 9pm | Sun 10pm | Sun 11pm | Mon 12am | Mon 1am | Mon 2am | Mon 3am | Mon 4am | Mon 5am | Mon 6am | Mon 7am | Mon 8am | Mon 9am | Mon 10am | Mon 11am | Mon 12pm | Mon 1pm | Mon 2pm | Mon 3pm | Mon 4pm | Mon 5pm | Mon 6pm | Mon 7pm | Mon 8pm | Mon 9pm | Mon 10pm | Mon 11pm | |
|-------------------|----------|---------|---------|---------|---------|---------|---------|---------|---------|---------|----------|----------|----------|---------|---------|---------|---------|---------|---------|---------|---------|---------|----------|----------|----------|---------|---------|---------|---------|---------|---------|---------|---------|---------|----------|----------|----|
| 610 Bridge | 10 | 10 | 10 | 10 | 10 | 10 | 10 | 10 | 10 | 10 | 10 | 10 | 10 | 10 | 10 | 10 | 10 | 8 | 6 | 5 | 7 | 10 | 10 | 10 | 10 | 10 | 10 | 10 | 10 | 10 | 10 | 10 | 10 | 10 | 10 | 10 | 10 |
| Kinder 1 | 10 | 10 | 10 | 10 | 10 | 10 | 10 | 10 | 10 | 10 | 10 | 10 | 10 | 10 | 10 | 10 | 10 | 8 | 7 | 5 | 8 | 10 | 10 | 10 | 10 | 10 | 10 | 10 | 10 | 10 | 10 | 10 | 10 | 10 | 10 | 10 | 10 |
| Greens Bayou | 10 | 10 | 10 | 10 | 10 | 10 | 10 | 10 | 10 | 10 | 10 | 10 | 10 | 10 | 10 | 10 | 10 | 8 | 8 | 7 | 8 | 10 | 10 | 10 | 10 | 10 | 10 | 10 | 10 | 10 | 10 | 10 | 10 | 10 | 10 | 10 | 10 |
| Shell Crude | 10 | 10 | 10 | 10 | 10 | 10 | 10 | 10 | 10 | 10 | 10 | 10 | 10 | 10 | 10 | 10 | 10 | 8 | 8 | 8 | 8 | 10 | 10 | 10 | 10 | 10 | 10 | 10 | 10 | 10 | 10 | 10 | 10 | 10 | 10 | 10 | 10 |
| Lynchburg Ferries | 10 | 10 | 10 | 10 | 10 | 10 | 10 | 10 | 10 | 10 | 10 | 10 | 10 | 10 | 10 | 10 | 10 | 8 | 8 | 8 | 8 | 10 | 10 | 10 | 10 | 10 | 10 | 10 | 10 | 10 | 10 | 10 | 10 | 10 | 10 | 10 | 10 |
| Exxon 3 | 10 | 10 | 10 | 10 | 10 | 10 | 10 | 10 | 10 | 10 | 10 | 10 | 10 | 10 | 10 | 10 | 10 | 10 | 8 | 8 | 8 | 8 | 10 | 10 | 10 | 10 | 10 | 10 | 10 | 10 | 10 | 10 | 10 | 10 | 10 | 10 | 10 |
| Morgans Point | 10 | 10 | 10 | 10 | 10 | 10 | 10 | 10 | 10 | 10 | 10 | 10 | 10 | 10 | 10 | 10 | 10 | 10 | 10 | 8 | 10 | 10 | 10 | 10 | 10 | 10 | 10 | 10 | 10 | 10 | 10 | 10 | 10 | 10 | 10 | 10 | 10 |
| 75/76 | 10 | 10 | 10 | 10 | 10 | 10 | 10 | 10 | 10 | 10 | 10 | 10 | 10 | 10 | 10 | 10 | 10 | 10 | 10 | 10 | 10 | 10 | 10 | 10 | 10 | 10 | 10 | 10 | 10 | 10 | 10 | 10 | 10 | 10 | 10 | 10 | 10 |
| 63/64 | 10 | 10 | 10 | 10 | 10 | 10 | 10 | 10 | 10 | 10 | 10 | 10 | 10 | 10 | 10 | 10 | 10 | 10 | 10 | 10 | 10 | 10 | 10 | 10 | 10 | 10 | 10 | 10 | 10 | 10 | 10 | 10 | 10 | 10 | 10 | 10 | 10 |
| 51/52 | 10 | 10 | 10 | 10 | 10 | 10 | 10 | 10 | 10 | 10 | 10 | 10 | 10 | 10 | 10 | 10 | 10 | 10 | 10 | 10 | 10 | 10 | 10 | 10 | 10 | 10 | 10 | 10 | 10 | 10 | 10 | 10 | 10 | 10 | 10 | 10 | 10 |
| 37/38 | 10 | 10 | 10 | 10 | 10 | 10 | 10 | 10 | 10 | 10 | 10 | 10 | 10 | 10 | 10 | 10 | 10 | 10 | 10 | 10 | 10 | 10 | 10 | 10 | 10 | 10 | 10 | 10 | 10 | 10 | 10 | 10 | 10 | 10 | 10 | 10 | 10 |
| 25/26 | 10 | 10 | 10 | 10 | 10 | 10 | 10 | 10 | 10 | 10 | 10 | 10 | 10 | 10 | 10 | 10 | 10 | 10 | 10 | 10 | 10 | 10 | 10 | 10 | 10 | 10 | 10 | 10 | 10 | 10 | 10 | 10 | 10 | 10 | 10 | 10 | 10 |
| 11/12 | 10 | 10 | 10 | 10 | 10 | 10 | 10 | 10 | 10 | 10 | 10 | 10 | 10 | 10 | 10 | 10 | 10 | 10 | 10 | 10 | 10 | 10 | 10 | 10 | 10 | 10 | 10 | 10 | 10 | 10 | 10 | 10 | 10 | 10 | 10 | 10 | 10 |
| 1 & 2 Bravo | 10 | 10 | 10 | 10 | 10 | 10 | 10 | 10 | 10 | 10 | 10 | 10 | 10 | 10 | 10 | 10 | 10 | 10 | 10 | 10 | 10 | 10 | 10 | 10 | 10 | 10 | 10 | 10 | 10 | 10 | 10 | 10 | 10 | 10 | 10 | 10 | 10 |

NOTE: This is automated data that may/may not agree with the official BAM thinking that's found on the daily slides or special visibility report slides. This data should be used as a guide only

Houston Pilots Wind Chart



Forecast Confidence



Example

Sustained wind 13 Knots
Gusts 18 Knots
Wind from the N

WS: 13
G:18
N

| Time Knots | Sun 12pm | Sun 1pm | Sun 2pm | Sun 3pm | Sun 4pm | Sun 5pm | Sun 6pm | Sun 7pm | Sun 8pm | Sun 9pm | Sun 10pm | Sun 11pm | Mon 12am | Mon 1am | Mon 2am | Mon 3am | Mon 4am | Mon 5am | Mon 6am | Mon 7am | Mon 8am | Mon 9am | Mon 10am | Mon 11am | Mon 12pm | Mon 1pm | Mon 2pm | Mon 3pm | Mon 4pm | Mon 5pm | Mon 6pm | Mon 7pm | Mon 8pm | Mon 9pm | Mon 10pm | Mon 11pm | | |
|-------------------|----------|---------|---------|---------|---------|---------|---------|---------|---------|---------|----------|----------|----------|---------|---------|---------|---------|---------|---------|---------|---------|---------|----------|----------|----------|---------|---------|---------|---------|---------|---------|---------|---------|---------|----------|----------|-----|---|
| 610 Bridge | 1 | 1 | 2 | 2 | 3 | 6 | 11 | 5 | 7 | 2 | 2 | 3 | 2 | 1 | 1 | 2 | 2 | 1 | 1 | 1 | 2 | 3 | 4 | 4 | 4 | 4 | 5 | 6 | 6 | 7 | 9 | 8 | 8 | 6 | 6 | 5 | | |
| | WNW | WNW | NW | SSE | SE | SE | S | S | SW | SSW | SSW | ESE | E | SSE | SSW | SSW | SSW | ESE | SSE | SE | SSE | SSE | SSE | SE | ESE | ESE | ESE | ESE | ESE | ESE | ESE | ESE | ESE | ESE | ESE | ESE | | |
| Kinder 1 | 1 | 1 | 1 | 3 | 4 | 7 | 11 | 5 | 7 | 3 | 2 | 2 | 2 | 1 | 1 | 1 | 2 | 2 | 1 | 1 | 1 | 2 | 3 | 4 | 4 | 4 | 5 | 6 | 6 | 8 | 9 | 8 | 8 | 6 | 6 | 5 | | |
| | W | NW | W | E | ESE | SE | S | SSW | WSW | SSW | SSW | ESE | E | SSE | SSW | SW | SSW | ESE | SSE | ESE | SSE | SSE | SE | ESE | ESE | ESE | ESE | ESE | ESE | ESE | ESE | ESE | ESE | ESE | ESE | ESE | | |
| Greens Bayou | 1 | 1 | 1 | 3 | 5 | 8 | 12 | 6 | 7 | 3 | 2 | 1 | 1 | 1 | 1 | 2 | 2 | 1 | 1 | 1 | 1 | 2 | 3 | 4 | 4 | 4 | 5 | 5 | 6 | 7 | 8 | 9 | 8 | 6 | 6 | 5 | | |
| | SW | SW | SE | ENE | ESE | SE | SSW | WSW | SW | SSW | SSW | E | ESE | S | SSW | SW | SSE | E | SSE | ESE | SE | SSE | SE | SE | SE | ESE | ESE | ESE | ESE | ESE | ESE | ESE | ESE | ESE | ESE | ESE | | |
| Shell Crude | 1 | 1 | 2 | 4 | 7 | 8 | 11 | 6 | 8 | 4 | 2 | 1 | 2 | 2 | 2 | 2 | 2 | 1 | 1 | 1 | 2 | 3 | 4 | 4 | 4 | 5 | 6 | 7 | 7 | 9 | 9 | 9 | 8 | 6 | 6 | 5 | | |
| | SSW | S | SE | E | ESE | SE | SSW | SSW | WSW | SSW | SSW | E | SE | S | SW | SW | S | E | SSE | E | SE | SE | SE | SE | ESE | ESE | ESE | ESE | ESE | ESE | ESE | ESE | ESE | ESE | ESE | ESE | | |
| Lynchburg Ferries | 1 | 1 | 2 | 4 | 7 | 8 | 11 | 7 | 7 | 4 | 1 | 1 | 2 | 1 | 1 | 1 | 2 | 2 | 2 | 2 | 2 | 3 | 4 | 4 | 5 | 5 | 6 | 7 | 8 | 10 | 10 | 9 | 9 | 7 | 6 | 6 | | |
| | SSW | SSE | SE | ESE | SE | SSE | S | SSW | WSW | SSW | SSE | ENE | SSE | SSW | SSW | SSW | S | E | SE | E | SE | SE | SE | SE | ESE | ESE | ESE | ESE | ESE | ESE | ESE | ESE | ESE | ESE | ESE | ESE | | |
| Exxon 3 | 4 | 4 | 6 | 7 | 9 | 11 | 17 | 13 | 12 | 11 | 7 | 5 | 8 | 8 | 7 | 5 | 4 | 3 | 3 | 3 | 3 | 4 | 5 | 5 | 5 | 6 | 7 | 9 | 11 | 12 | 13 | 13 | 13 | 12 | 10 | 9 | 8 | |
| | S | SSE | SE | ESE | SE | SSE | S | SSW | WSW | SSW | ESE | S | SSW | SW | SSW | SSW | SW | SE | SE | E | ESE | SE | ESE | SE | ESE | SE | SSE | SE | SSE | SSE | SSE | SSE | SSE | SSE | SSE | SSE | | |
| Morgans Point | 4 | 5 | 6 | 7 | 8 | 10 | 14 | 9 | 7 | 5 | 4 | 3 | 5 | 4 | 3 | 4 | 4 | 3 | 3 | 3 | 4 | 4 | 5 | 5 | 6 | 6 | 8 | 10 | 11 | 12 | 13 | 14 | 14 | 14 | 12 | 11 | 10 | 9 |
| | SE | E | SE | SE | SE | SSE | S | SSW | WSW | SSW | SSE | SSE | S | SSW | SW | SSW | WSW | SSW | S | ESE | ESE | SE | SE | SE | SE | ESE | ESE | ESE | ESE | ESE | ESE | ESE | ESE | ESE | ESE | ESE | ESE | |
| 75/76 | 5 | 6 | 7 | 8 | 9 | 13 | 16 | 10 | 8 | 6 | 7 | 6 | 6 | 6 | 5 | 5 | 5 | 4 | 4 | 4 | 4 | 5 | 6 | 6 | 6 | 6 | 8 | 11 | 12 | 13 | 14 | 14 | 13 | 12 | 10 | 9 | 9 | |
| | ESE | ESE | SE | SE | SE | SSE | SSW | SSW | W | SW | S | S | SSW | SW | SW | SSW | SW | SW | SW | SSW | ESE | ESE | ESE | ESE | ESE | SE | SSE | SSE | SSE | SSE | SSE | SSE | SSE | SSE | SSE | SSE | SSE | |
| 63/64 | 4 | 5 | 6 | 7 | 9 | 13 | 16 | 11 | 7 | 6 | 7 | 6 | 6 | 6 | 5 | 5 | 5 | 4 | 4 | 4 | 4 | 5 | 6 | 6 | 5 | 6 | 8 | 10 | 12 | 13 | 14 | 13 | 13 | 11 | 9 | 9 | 9 | |
| | E | E | ESE | SE | SSE | S | SSW | SSW | WSW | SW | S | S | SSW | SW | SW | SSW | SW | SW | SSW | SSW | ESE | E | E | E | ESE | SE | SE | SSE | SSE | SSE | SSE | SSE | SSE | SSE | SSE | SSE | SSE | |
| 51/52 | 3 | 4 | 4 | 6 | 8 | 13 | 16 | 11 | 8 | 6 | 7 | 7 | 6 | 6 | 5 | 4 | 4 | 4 | 4 | 4 | 4 | 5 | 5 | 5 | 5 | 6 | 8 | 9 | 11 | 12 | 12 | 12 | 12 | 10 | 9 | 8 | 8 | |
| | 4 | 5 | 5 | 6 | 9 | 15 | 19 | 14 | 10 | 9 | 10 | 9 | 8 | 8 | 7 | 5 | 5 | 4 | 4 | 5 | 5 | 6 | 6 | 6 | 6 | 7 | 8 | 10 | 11 | 13 | 13 | 14 | 13 | 11 | 10 | 9 | 9 | |
| 37/38 | 2 | 4 | 4 | 6 | 8 | 12 | 15 | 11 | 8 | 7 | 7 | 7 | 6 | 6 | 5 | 4 | 3 | 3 | 3 | 3 | 3 | 4 | 4 | 5 | 6 | 6 | 8 | 9 | 10 | 11 | 10 | 10 | 9 | 8 | 7 | 8 | 7 | |
| | 3 | 4 | 5 | 6 | 8 | 14 | 18 | 14 | 10 | 10 | 9 | 9 | 8 | 7 | 7 | 4 | 4 | 4 | 3 | 3 | 4 | 5 | 6 | 6 | 6 | 7 | 8 | 9 | 11 | 12 | 12 | 12 | 12 | 10 | 8 | 8 | 9 | |
| 25/26 | ENE | E | ESE | SE | SSE | S | SSW | SSW | SSW | SW | SSW | S | SSW | SSW | SSW | SSW | SSW | SSW | SSW | SSW | SSW | SSW | SSW | SSW | SSW | ESE | ENE | E | ESE | SE | SE | SSE | SSE | SSE | SSE | SSE | SSE | |
| | 3 | 4 | 4 | 6 | 8 | 11 | 13 | 10 | 7 | 6 | 6 | 6 | 6 | 5 | 5 | 3 | 3 | 2 | 2 | 3 | 4 | 5 | 5 | 5 | 6 | 7 | 8 | 8 | 9 | 9 | 9 | 9 | 9 | 9 | 8 | 6 | 6 | |
| 11/12 | ENE | ESE | ESE | SE | SSE | S | SSW | SSW | SSW | WSW | SSW | S | SSW | SSW | SSW | SSW | SW | SSW | SSW | S | E | ENE | ENE | E | ESE | SE | SE | SSE | SSE | SSE | SSE | SSE | SSE | SSE | SSE | SSE | | |
| | 3 | 4 | 5 | 6 | 8 | 11 | 13 | 10 | 7 | 7 | 6 | 6 | 6 | 5 | 5 | 4 | 3 | 3 | 3 | 3 | 3 | 4 | 5 | 5 | 6 | 6 | 7 | 7 | 8 | 9 | 9 | 9 | 9 | 9 | 8 | 7 | 7 | |
| 1 & 2 Bravo | ESE | SE | SE | SE | SSE | S | SSW | SSW | SSW | SW | SSW | S | SSW | SSW | SSW | SSW | SSW | SSW | SSW | S | E | ENE | ENE | E | ESE | SE | SE | SSE | SSE | SSE | SSE | SSE | SSE | SSE | SSE | SSE | | |
| | 3 | 2 | 3 | 5 | 8 | 12 | 14 | 12 | 10 | 9 | 8 | 7 | 7 | 6 | 5 | 4 | 4 | 4 | 4 | 4 | 4 | 5 | 6 | 6 | 6 | 6 | 7 | 7 | 8 | 9 | 10 | 10 | 10 | 9 | 9 | 8 | 8 | |
| | SE | ESE | SE | SE | SSE | S | SSW | SSW | SSW | SW | SSW | SSW | SSW | SSW | SSW | S | S | S | S | SSE | ENE | ENE | NE | E | E | ESE | SE | SE | SSE | SSE | SSE | SSE | SSE | SSE | SSE | SSE | | |

NOTE: This is automated data that may/may not agree with the official BAM thinking that's found on the daily slides. This data should be used as a guide only

Houston Pilots: Sun. 7/23/2023



Forecast Discussion

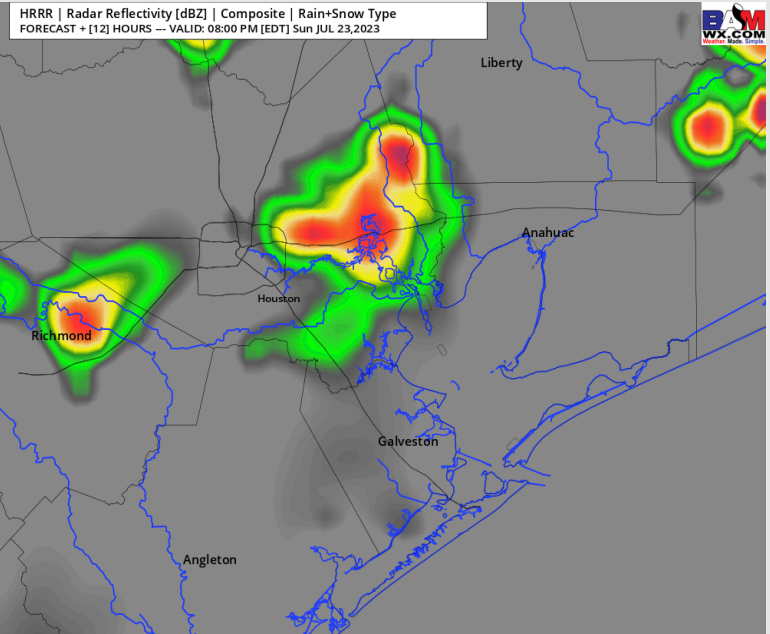
Precip: Favoring a 10% chance for isolated showers today until 3PM, then between 3-8 PM a 30-40% chance for scattered showers/thunderstorms will be possible. Favoring dry conditions after 8 PM.

Wind: Winds will be out of the W/SW throughout the day. Winds for Stations N of Morgan's Point will be at 1-6 kts until 3 PM, after which time they will increase to 5-10 kts until 8 PM. After 8 PM, winds will calm back to 2-7 kts for the remainder of the evening. Winds S of Morgan's Point will be at 2-7 kts until 3 PM. After 3 PM winds will pick back up to 12-17 kts associated with passing showers/storms until 8 PM. After 8 PM, winds will calm slightly to 10-15 kts for the remainder of the evening. **Wind Gusts of 18-23 kts are possible under the strongest cells today.**

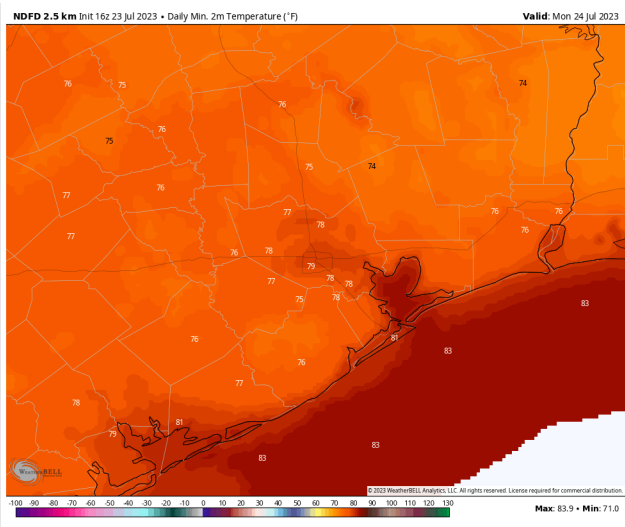
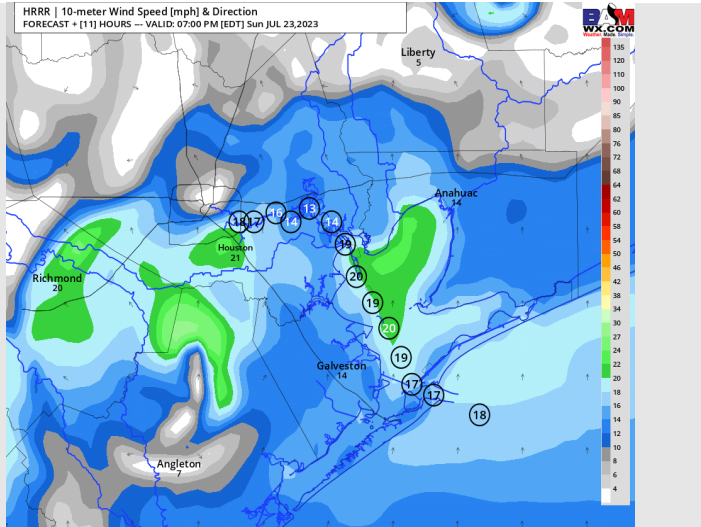
Temps: Low temps tonight will be in the low 80s F for Stations S of Morgan's Point and in the upper 70s F N of Morgan's Point.

Visibility: Not anticipating any visibility concerns at this time.

Precip Image: 7 PM CT



Wind Speed:
6 PM CT



Low Temps
Mon AM

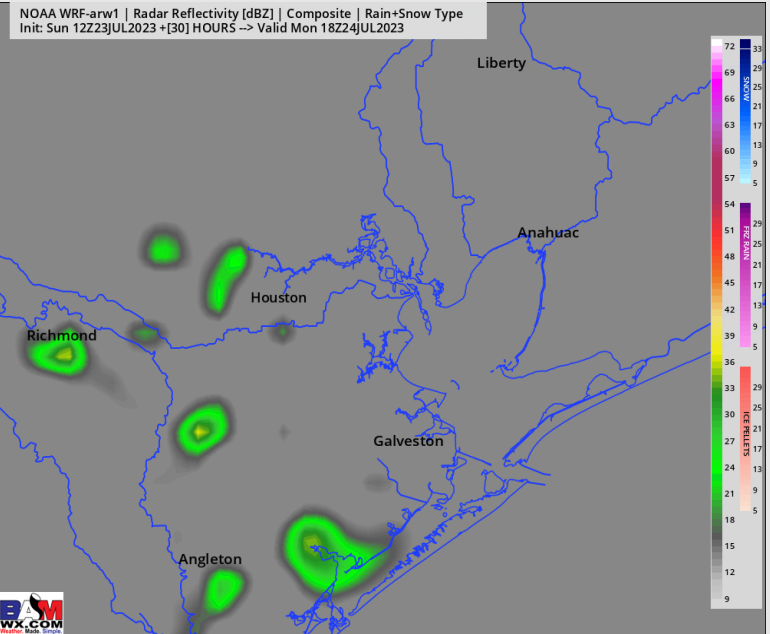
Houston Pilots: Mon. 7/24/2023



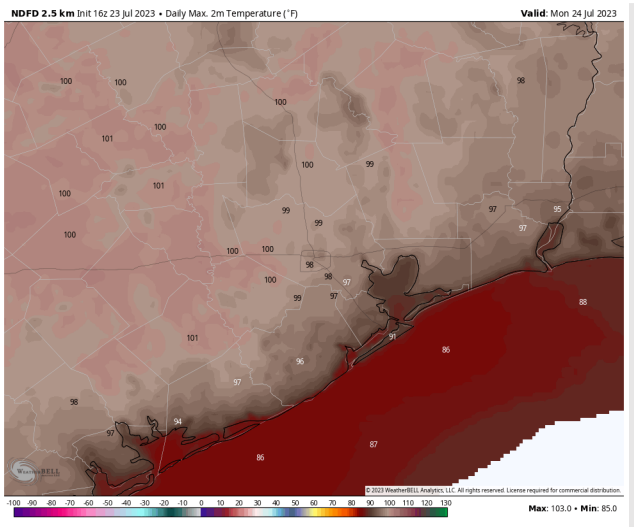
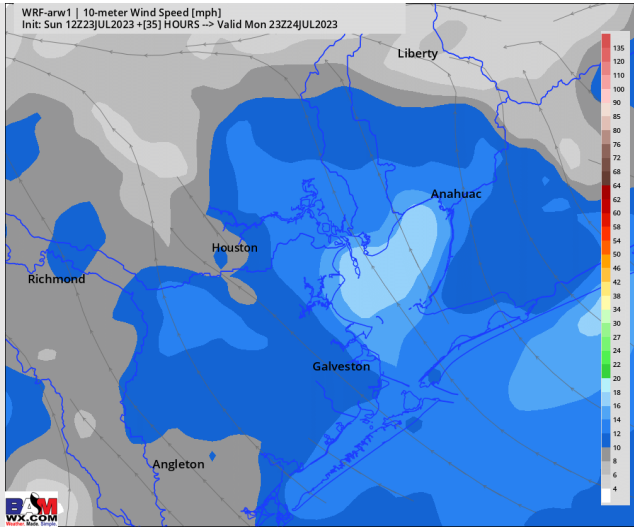
Forecast Discussion

- Precip:** Favoring mostly dry conditions for Monday, aside from a 10% chance for isolated showers between 12-6 PM.
- Wind:** Winds will be out of the SW throughout the day. Winds will be 3-8 kts for Stations N of Morgan's Point through 3 PM. After 3 PM winds will slightly increase to 5-10 kts for the remainder of the evening. Winds S of Morgan's Point will be at 3-8 kts until 3 PM. After 3 PM, winds will increase to 7-12 kts for the remainder of the evening.
- Temps:** High temps on Monday will be in the upper 80s F for the Boarding Station, low/mid 90s F for all other Stations S of Morgan's Point and upper 90s near 100 F N of Morgan's Point.
- Visibility:** A low-end risk for patchy fog will be in play for Stations N of Morgan's Point in the AM, however visibilities are not expected to drop below 5 miles..

Precip Image: 1 PM CT



Wind Speed:
6 PM CT



High Temps
Monday

Houston Pilots: Tue. 7/25/2023



Forecast Discussion

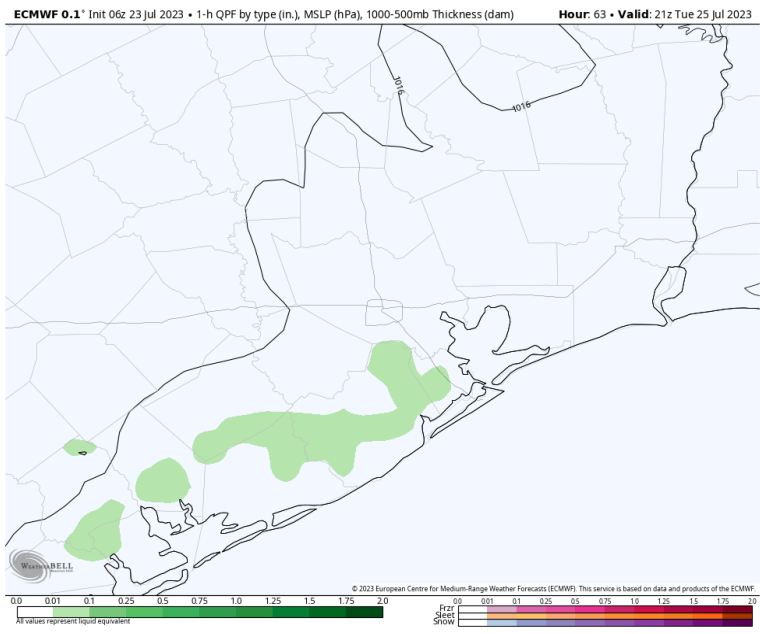
Precip: Favoring mostly dry conditions throughout the day, aside from a 10-20% chance for scattered showers between 2-5 PM.

Wind: Winds will be from the S/SW throughout the day. Winds for Stations N of Morgan's Point will be at 2-7 kts until 3 PM. Winds for Stations S of Morgan's Point will be at 7-12 kts until 8 AM, at which time winds will calm to 2-7 kts until 3 PM. After 3 PM, winds for all stations will increase to 7-12 kts for the remainder of the evening.

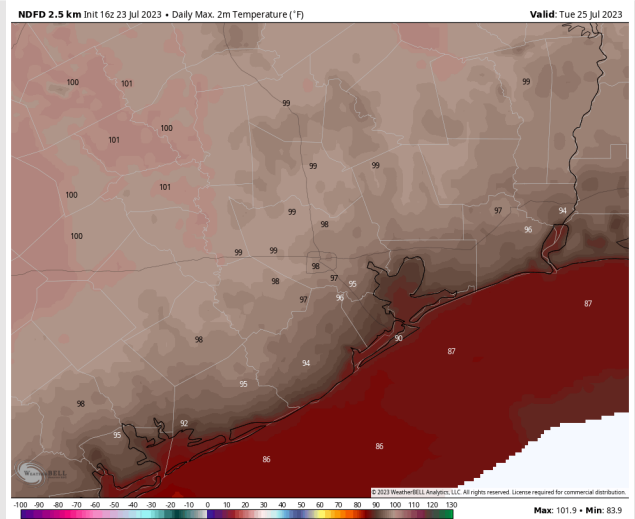
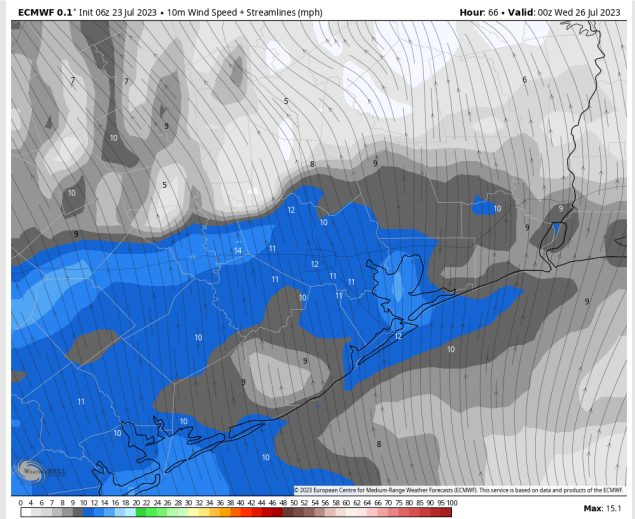
Temps: High temps Tuesday will be in the mid 80s F for the Boarding Station, low/mid 90s F for all other Stations S of Morgan's Point, and upper 90s near 100 F N of Morgan's Point.

Visibility: Not anticipating any visibility concerns at this time.

Precip Image: 4 PM CT

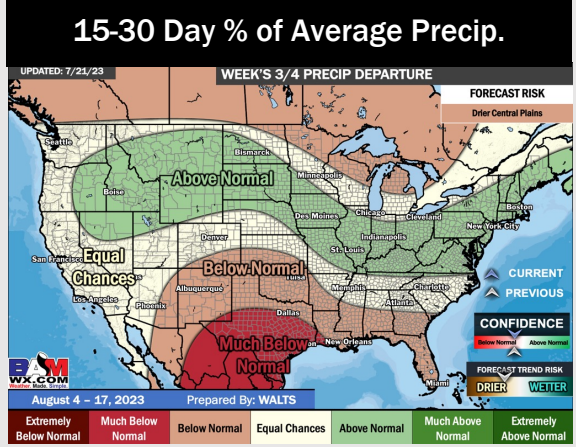
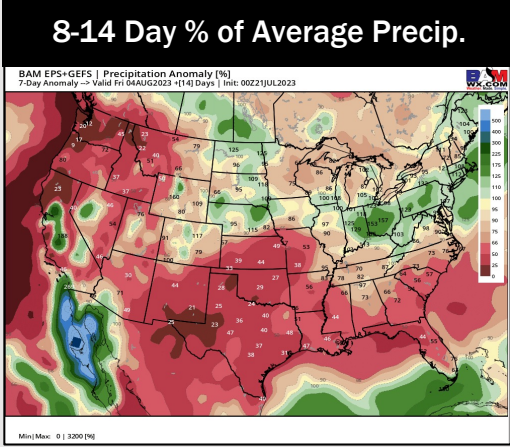
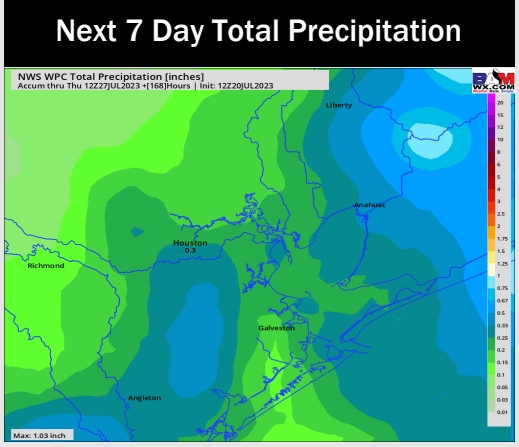
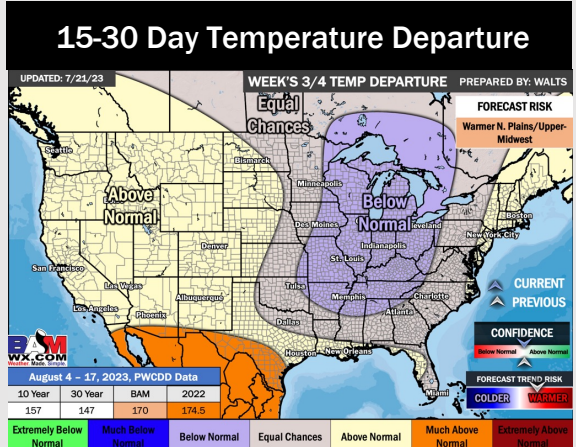
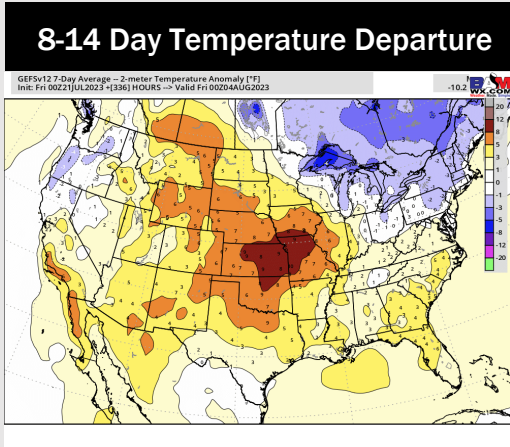
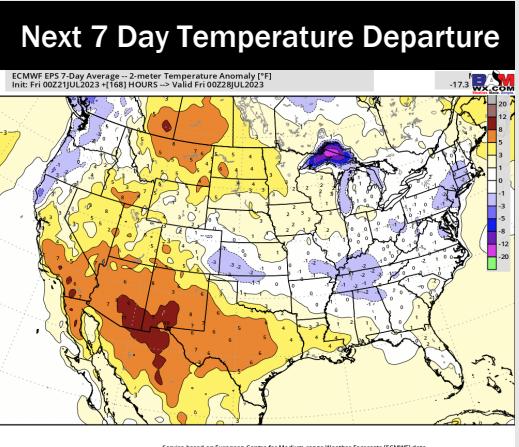


Wind Speed:
7 PM CT



High Temps
Tuesday

Houston Pilots: 7/23/23



- Above normal temperatures are favored over the next week. Anticipating low-end rain chances to make their way back into the area over the next few days.
- Expecting much below normal precipitation chances and above normal temperatures for the week 2 timeframe.
- Above normal temperatures and much below normal chances for precipitation are favored in the weeks 3/4 timeframe.