

Houston Pilots Forecast Package

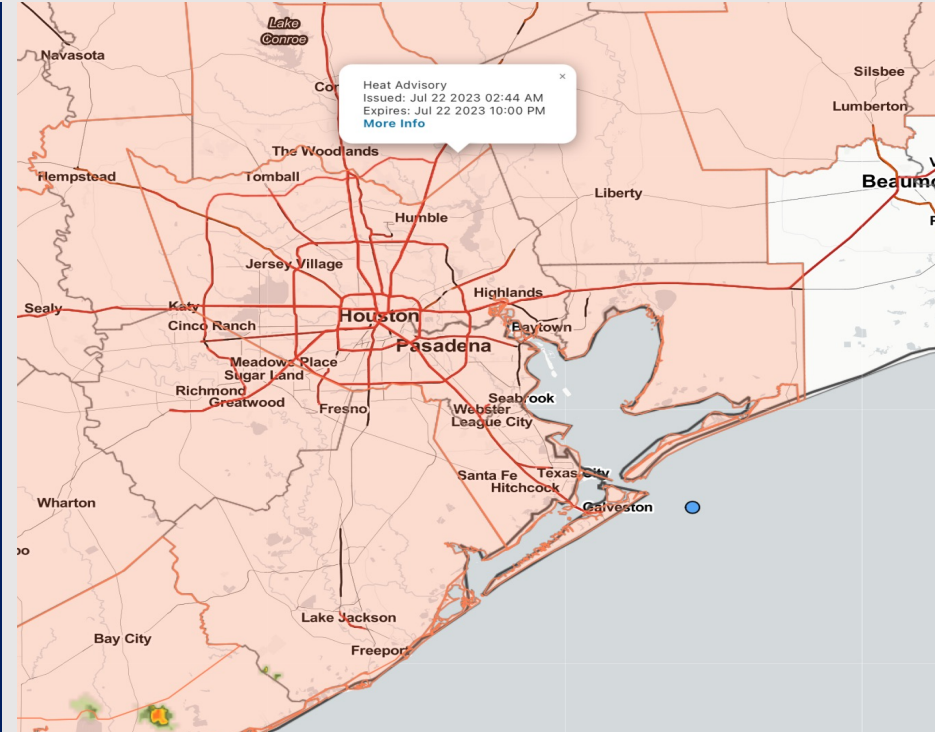


Updated: 2:10 PM CT
Saturday, July 22, 2023

Forecaster: Tyler Riggles

Weather Headlines

- Mostly dry start to the weekend but better rain chances return Sunday.
- Excessive heat concerns (90+ F) to continue throughout at least next week.
- No active tropical threats to SE TX at this time.
- Not anticipating any risks for fog going forward.



Radar/NWS Alerts: 2:10 PM CT



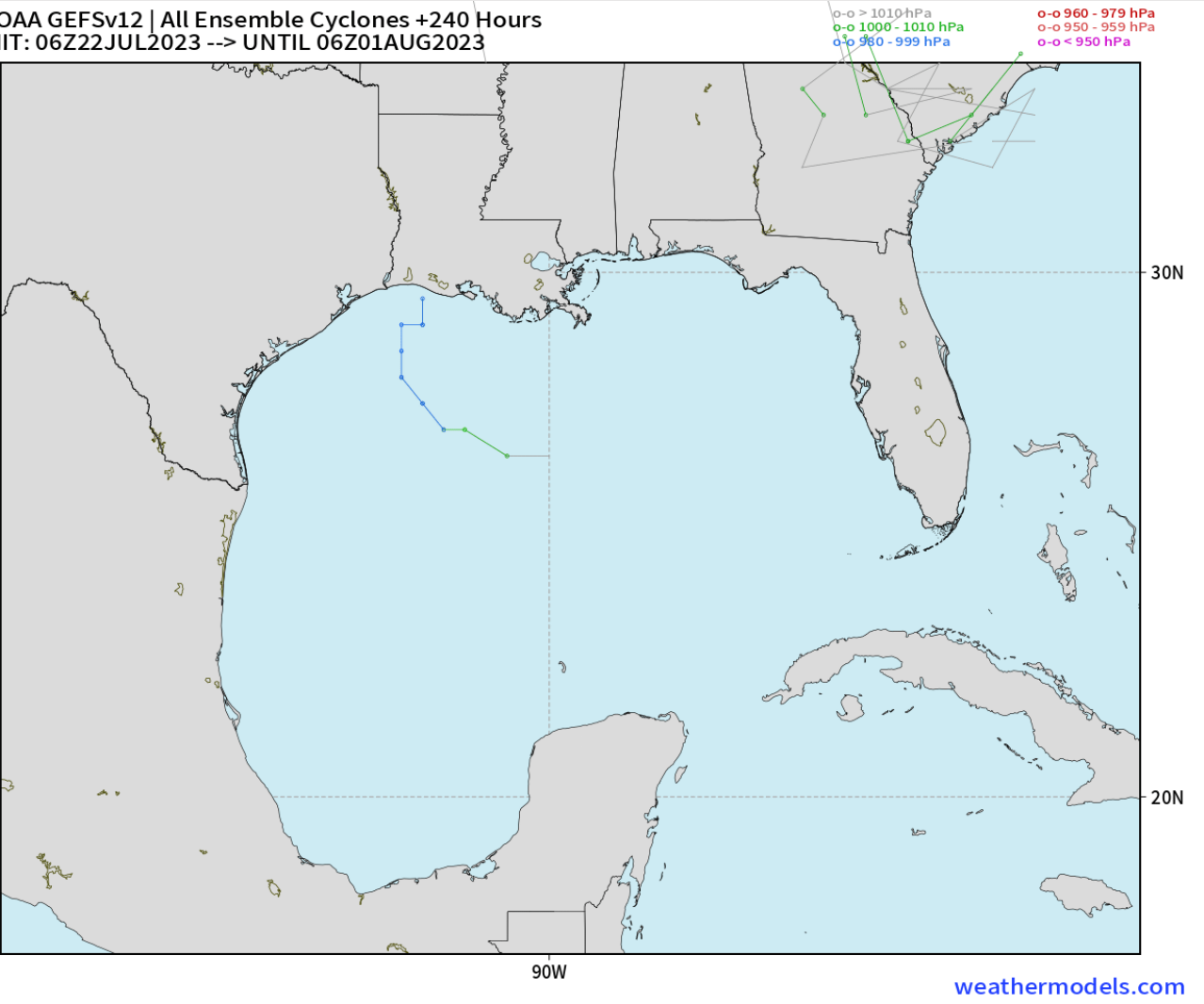
As always, please do not hesitate to reach out to us with any forecast questions via the chat option on the Weather Porthole or our on-call number, **(317)-560-8122** press 1 for forecast questions.

Houston Pilots Tropical Update



American Model Low Pressure Tracks Next 10-Days

NOAA GEFSv12 | All Ensemble Cyclones +240 Hours
INIT: 06Z22JUL2023 --> UNTIL 06Z01AUG2023



No tropical activity anticipated over the next 10 days for SE TX.

No other areas of interest being noted across the Atlantic/Gulf.

Houston Pilots Visibility Chart (miles)



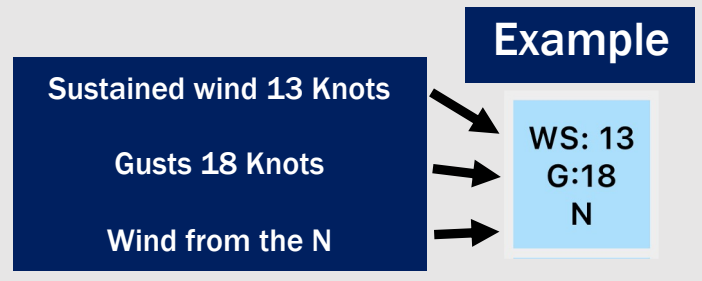
Forecast Confidence



Time	Sat 1pm	Sat 2pm	Sat 3pm	Sat 4pm	Sat 5pm	Sat 6pm	Sat 7pm	Sat 8pm	Sat 9pm	Sat 10pm	Sat 11pm	Sun 12am	Sun 1am	Sun 2am	Sun 3am	Sun 4am	Sun 5am	Sun 6am	Sun 7am	Sun 8am	Sun 9am	Sun 10am	Sun 11am	Sun 12pm	Sun 1pm	Sun 2pm	Sun 3pm	Sun 4pm	Sun 5pm	Sun 6pm	Sun 7pm	Sun 8pm	Sun 9pm	Sun 10pm	Sun 11pm	Mon 12am	
610 Bridge	10	10	10	10	10	10	10	10	10	10	10	10	10	10	10	10	10	10	8	10	10	10	10	10	10	10	10	10	10	10	10	10	10	10	10	10	10
Kinder 1	10	10	10	10	10	10	10	10	10	10	10	10	10	10	10	10	10	10	8	10	10	10	10	10	10	10	10	10	10	10	10	10	10	10	10	10	10
Greens Bayou	10	10	10	10	10	10	10	10	10	10	10	10	10	10	10	10	10	10	8	10	10	10	10	10	10	10	10	10	10	10	10	10	10	10	10	10	10
Shell Crude	10	10	10	10	10	10	10	10	10	10	10	10	10	10	10	10	10	10	10	10	10	10	10	10	10	10	10	10	10	10	10	10	10	10	10	10	10
Lynchburg Ferries	10	10	10	10	10	10	10	10	10	10	10	10	10	10	10	10	10	10	10	10	10	10	10	10	10	10	10	10	10	10	10	10	10	10	10	10	10
Exxon 3	10	10	10	10	10	10	10	10	10	10	10	10	10	10	10	10	10	10	10	10	10	10	10	10	10	10	10	10	10	10	10	10	10	10	10	10	10
Morgans Point	10	10	10	10	10	10	10	10	10	10	10	10	10	10	10	10	10	10	10	10	10	10	10	10	10	10	10	10	10	10	10	10	10	10	10	10	10
75/76	10	10	10	10	10	10	10	10	10	10	10	10	10	10	10	10	10	10	10	10	10	10	10	10	10	10	10	10	10	10	10	10	10	10	10	10	10
63/64	10	10	10	10	10	10	10	10	10	10	10	10	10	10	10	10	10	10	10	10	10	10	10	10	10	10	10	10	10	10	10	10	10	10	10	10	10
51/52	10	10	10	10	10	10	10	10	10	10	10	10	10	10	10	10	10	10	10	10	10	10	10	10	10	10	10	10	10	10	10	10	10	10	10	10	10
37/38	10	10	10	10	10	10	10	10	10	10	10	10	10	10	10	10	10	10	10	10	10	10	10	10	10	10	10	10	10	10	10	10	10	10	10	10	10
25/26	10	10	10	10	10	10	10	10	10	10	10	10	10	10	10	10	10	10	10	10	10	10	10	10	10	10	10	10	10	10	10	10	10	10	10	10	10
11/12	10	10	10	10	10	10	10	10	10	10	10	10	10	10	10	10	10	10	10	10	10	10	10	10	10	10	10	10	10	10	10	10	10	10	10	10	10
1 & 2 Bravo	10	10	10	10	10	10	10	10	10	10	10	10	10	10	10	10	10	10	10	10	10	10	10	10	10	10	10	10	10	10	10	10	10	10	10	10	10

NOTE: This is automated data that may/may not agree with the official BAM thinking that's found on the daily slides or special visibility report slides. This data should be used as a guide only

Houston Pilots Wind Chart



Time Knots	Sat 1pm	Sat 2pm	Sat 3pm	Sat 4pm	Sat 5pm	Sat 6pm	Sat 7pm	Sat 8pm	Sat 9pm	Sat 10pm	Sat 11pm	Sun 12am	Sun 1am	Sun 2am	Sun 3am	Sun 4am	Sun 5am	Sun 6am	Sun 7am	Sun 8am	Sun 9am	Sun 10am	Sun 11am	Sun 12pm	Sun 1pm	Sun 2pm	Sun 3pm	Sun 4pm	Sun 5pm	Sun 6pm	Sun 7pm	Sun 8pm	Sun 9pm	Sun 10pm	Sun 11pm	Mon 12am		
610 Bridge	3	2	2	1	1	4	7	8	8	7	7	5	3	1	2	3	2	2	2	3	4	5	4	4	5	6	6	7	8	8	7	6	6	5	4			
	3	3	3	2	3	5	9	13	16	16	18	15	12	4	6	5	4	3	3	5	5	7	7	7	8	9	9	11	11	10	9	9	9	8	6			
Kinder 1	W	WNW	WNW	W	WSW	SSW	S	S	S	SSW	SSW	SSW	WSW	E	SSW	WSW	SW	SSW	SW	WSW	W	WNW	N	NNW	N	NNE	NE	ENE	ESE	ESE	SSE	SSE	SSE	S	S			
	3	2	2	1	2	5	7	7	8	7	7	5	3	1	2	3	2	2	2	3	4	5	4	4	5	6	6	7	8	8	7	6	6	5	4			
Greens Bayou	W	WNW	WNW	WSW	SW	S	S	S	S	SSW	SSW	SW	SE	SE	S	WSW	SW	SSW	SW	WSW	W	WNW	NW	NNW	SSW	NNE	NE	E	SE	ESE	SSE	SSE	SSE	S	S			
	3	2	2	2	3	6	8	7	8	7	7	5	3	1	2	3	2	2	2	3	4	4	4	4	5	6	6	7	8	8	7	6	6	5	4			
Shell Crude	W	W	W	SSW	SSE	SSE	S	S	S	SSW	SSW	SW	SE	SSE	S	WSW	SW	SSW	SW	W	W	WNW	NW	NNW	SSW	NNE	NE	E	SE	ESE	SSE	SSE	SSE	S	S			
	3	2	1	4	5	7	8	8	7	7	7	5	4	1	2	3	2	2	2	3	4	4	4	4	5	6	6	8	9	8	7	6	6	5	4			
Lynchburg Ferries	W	W	SW	SSE	SSE	SSE	S	S	S	SSW	SSW	SW	NE	E	SSW	W	S	SW	WSW	W	WNW	NW	NNW	SE	NNE	ENE	ESE	SE	SSE	SSE	SSE	S	S	S				
	3	3	5	8	9	9	9	8	8	7	7	5	6	2	2	4	3	3	3	4	4	5	5	5	5	5	7	8	9	10	10	8	7	7	6	5		
Exxon 3	W	WSW	SSW	SSE	SSE	S	S	S	S	SSW	SSW	SSW	NE	ESE	SW	W	SSW	WSW	W	W	WNW	WNW	NW	NNW	SSW	E	ESE	SE	SE	SSE	SSE	SSE	S	S	SSW			
	3	4	5	10	11	11	10	10	10	10	9	9	7	6	3	3	5	4	4	4	4	5	5	5	5	6	8	9	10	11	11	10	8	7	7	6		
Morgans Point	SW	S	SSE	SSE	SSE	S	S	S	S	SSW	SSW	SSW	SE	ESE	SW	W	WSW	W	WSW	W	WNW	WNW	NW	WSW	SSE	ESE	SE	SE	SE	SSE	S	S	S	S	SSW			
	3	6	12	13	13	12	11	12	13	12	12	11	9	3	4	6	6	6	6	5	6	6	6	6	5	6	7	9	10	11	13	13	12	11	9	8	7	
75/76	SE	ESE	SE	SSE	SSE	S	S	SSW	SSW	SSW	SSW	SSW	WSW	E	SW	W	W	W	W	W	WNW	WNW	ESE	ESE	SE	SSE	SSE	SSE	SSE	SSE	SSE	S	S	S	S	SSW		
	3	7	11	13	13	12	12	13	14	13	14	12	11	4	5	6	6	5	6	6	6	6	6	5	5	5	7	8	10	11	13	13	11	10	9	8	7	
63/64	E	ESE	SE	SSE	S	S	S	SSW	SSW	SSW	SSW	SW	SSW	WSW	W	W	W	W	W	W	WNW	W	ESE	ESE	SE	SSE	SSE	SSE	SSE	SSE	S	S	S	S	S	SSW		
	3	6	10	13	13	14	13	14	15	14	14	13	12	4	6	6	6	5	6	6	6	6	6	5	5	7	8	9	11	12	12	10	8	8	7	7		
51/52	ENE	SE	SSE	S	S	SSW	SSW	SSW	SSW	SSW	SSW	SSW	NNW	W	W	W	W	W	W	W	WNW	W	SSE	SE	SSE	SSE	S	SSE	SSE	S	S	S	S	S	SSW	SSW		
	3	5	9	12	13	14	13	14	14	14	15	13	13	5	6	6	5	4	5	5	6	6	6	6	5	6	7	8	9	10	10	10	9	8	7	7	6	
37/38	ENE	SE	S	S	S	SSW	SSW	SSW	SSW	SSW	SSW	SSW	NNW	W	WSW	W	W	W	W	W	W	W	W	SSE	SSE	S	S	SSE	S	S	S	S	S	S	SSW	SSW		
	3	7	9	10	12	12	12	13	13	13	13	12	12	6	6	5	5	4	4	5	6	6	6	5	6	6	7	8	8	9	9	9	8	6	6	5	5	
25/26	E	SSE	S	S	S	SSW	SSW	SSW	SSW	SSW	SSW	SSW	NNW	WNW	WSW	W	W	W	W	W	W	W	W	WSW	SW	SSE	S	S	S	S	SSE	S	S	S	SSW	SSW		
	5	9	9	11	12	13	12	13	13	13	13	12	12	6	6	5	5	4	5	6	6	6	6	5	6	6	7	8	8	9	8	8	7	7	6	6	6	
11/12	SSE	S	S	SSW	SSW	SSW	SSW	SSW	SSW	SSW	SSW	SSW	NW	WNW	WSW	W	W	W	W	W	W	W	W	WSW	SW	S	S	S	S	SSE	S	S	S	S	SSW	SSW		
	8	9	10	11	13	14	14	15	15	15	15	14	15	6	8	7	6	6	6	7	7	7	7	6	6	5	6	7	8	9	8	8	7	7	7	7	7	
1 & 2 Bravo	8	10	11	12	15	16	16	17	18	18	18	17	18	6	8	10	8	7	7	7	8	8	8	8	7	8	9	10	9	10	9	9	9	9	9	9	7	7
	SSW	SSW	SSW	SSW	SSW	SSW	SSW	SSW	SSW	SSW	SSW	SSW	SSW	NNW	W	WSW	W	W	W	W	W	W	W	W	WSW	SSW	S	S	S	S	SSE	SSE	S	S	S	SSW	SSW	

NOTE: This is automated data that may/may not agree with the official BAM thinking that's found on the daily slides. This data should be used as a guide only

Houston Pilots: Sat. 7/22/2023



Forecast Discussion

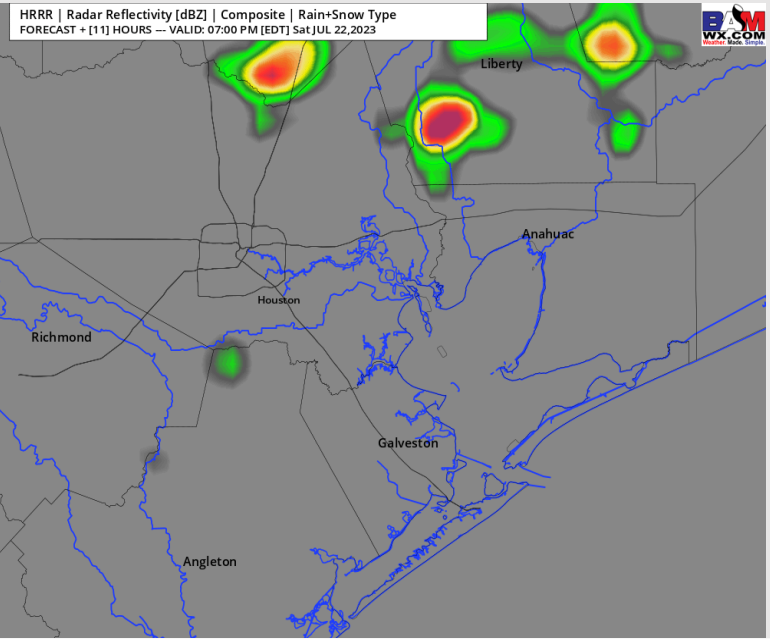
Precip: Favoring mostly dry conditions throughout most of the day, aside from hit/miss chances (20-30%) of showers/thunderstorms after 6 PM. Potential risks with any storms will be hail, lightning and 40 MPH wind gusts.

Wind: Winds will be from the W/SW for Stations S of Morgan's Point for the remainder of the day. Winds will be out of the WNW for stations N of Morgan's Point until 4 PM, coming out of the W/SW after that time. Winds for Stations N of Morgan's Point will be at 2-7 kts through 5 PM, after which time winds will increase to 5-10 kts for the remainder of the evening. Winds S of Morgan's Point will be 4-9 kts through 3 PM. Then after 3 PM, winds S of Morgan's Point will increase to 15-20 kts for the rest of the day. **Wind gusts of 20-25 kts will be possible for all stations after 4 PM.**

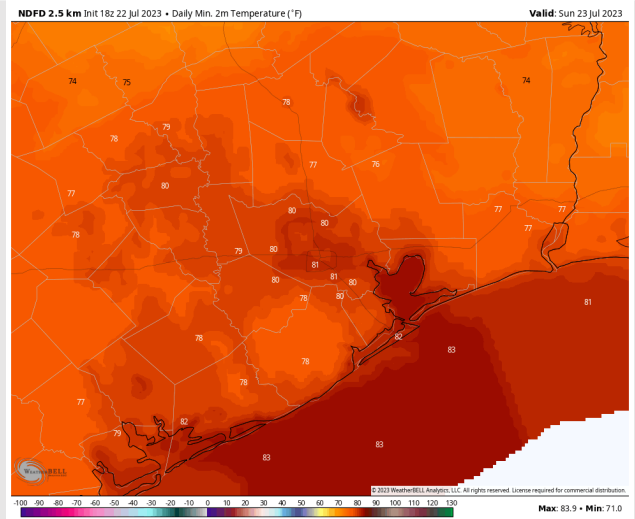
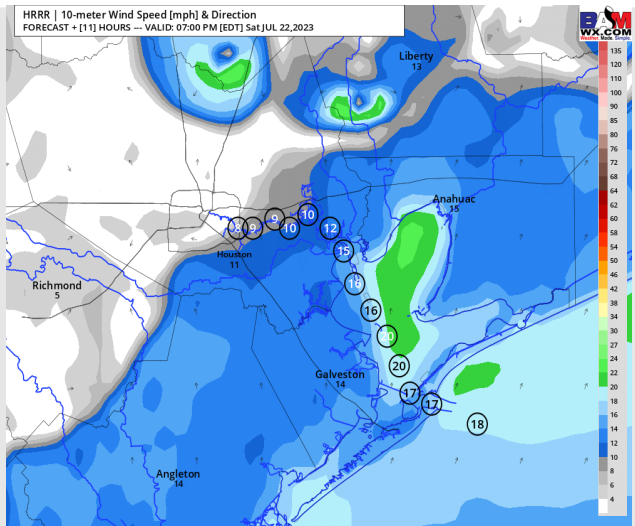
Temps: Low temps tonight will be in the low 80s F for Stations S of Morgan's Point and in the upper 70s near 80 F N of Morgan's Point

Visibility: Not anticipating any visibility concerns at this time.

Precip Image: 6 PM CT



Wind Speed:
6 PM CT



Low Temps
Sun AM

Houston Pilots: Sun. 7/23/2023



Forecast Discussion

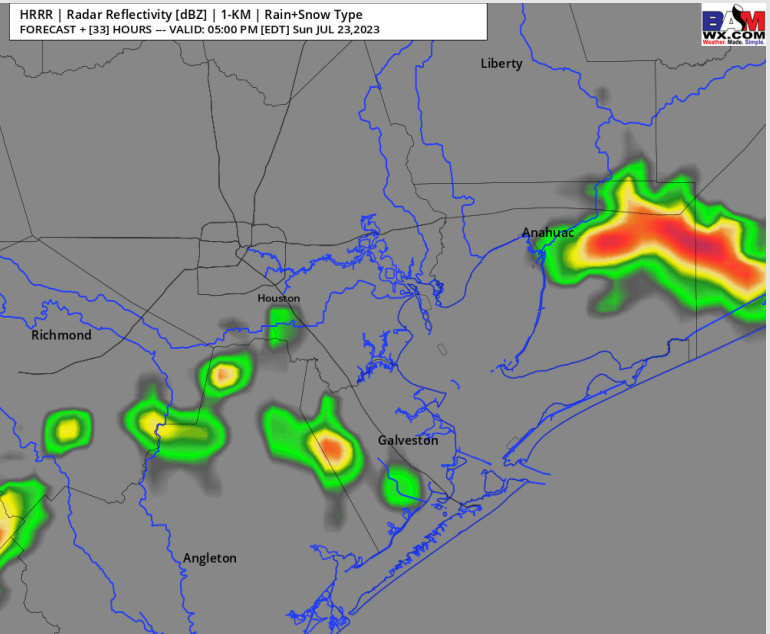
Precip: Favoring a 10% chance for isolated showers on Sunday until 3PM, then between 3-8 PM a 30-40% chance for scattered showers/thunderstorms will be possible. Favoring dry conditions after 8 PM.

Wind: Winds will be out of the W/SW throughout the day. Winds for Stations N of Morgan's Point will be at 3-8 kts until 5 PM, after which time they will increase to 5-10 kts until 8 PM. After 8 PM, winds will calm back to 3-8 kts for the remainder of the evening. Winds S of Morgan's Point will be at 8-13 kts until 9 AM, after which time winds will calm to 4-9 kts until 3 PM. After 3 PM winds will pick back up to 12-17 kts associated with passing showers/storms until 8 PM. After 8 PM, winds will calm slightly to 10-15 kts for the remainder of the evening. **Wind Gusts of 18-23 kts are possible under the strongest cells Sunday.**

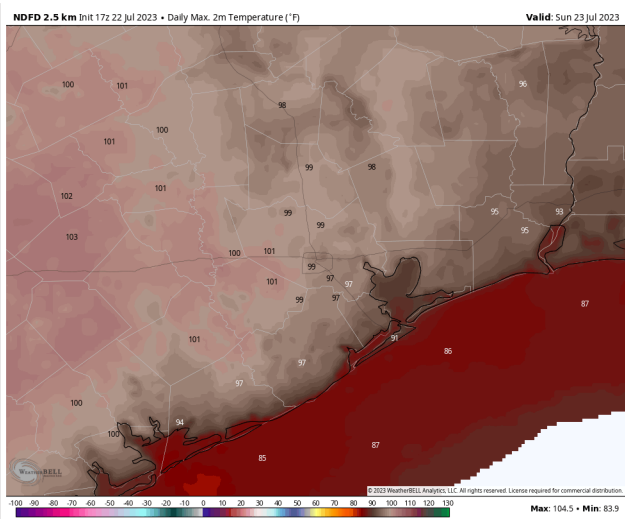
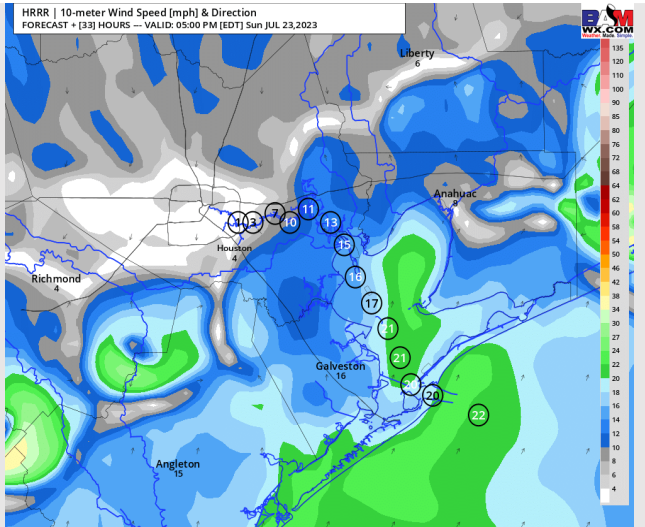
Temps: High temps on Sunday will be in the upper 80s F for the Boarding Station, low/mid 90s F for all other Stations S of Morgan's Point and in the upper 90s for Stations N of Morgan's Point

Visibility: Not anticipating any visibility concerns at this time.

Precip Image: 4 PM CT



Wind Speed:
4 PM CT



High Temps
Sunday

Houston Pilots: Mon. 7/24/2023



Forecast Discussion

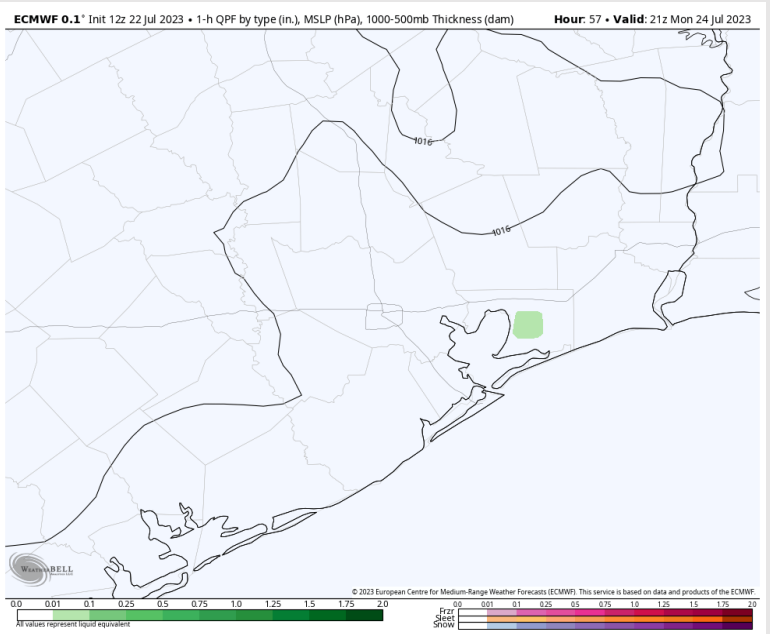
Precip: Favoring mostly dry conditions for Monday, aside from a 10% chance for isolated showers between 2-6 PM.

Wind: Winds will be out of the SW throughout the day. Winds will be 3-8 kts for Stations N of Morgan's Point through 7 PM. After 7 PM winds will slightly increase to 5-10 kts for the remainder of the evening. Winds S of Morgan's Point will be at 3-8 kts until 3 PM. After 3 PM, winds will increase to 6-11 kts for the remainder of the evening.

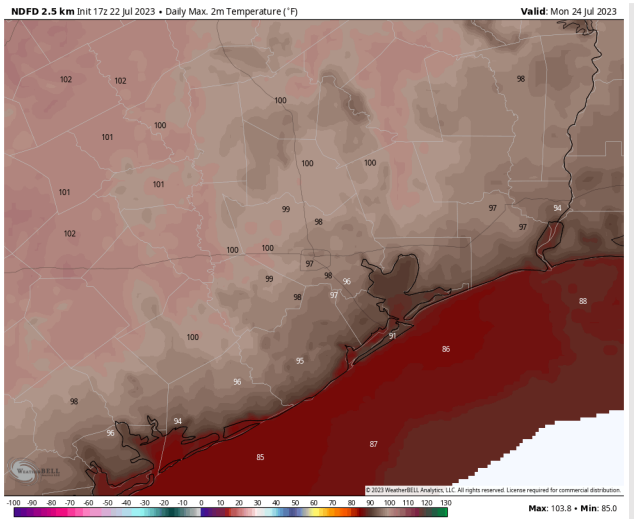
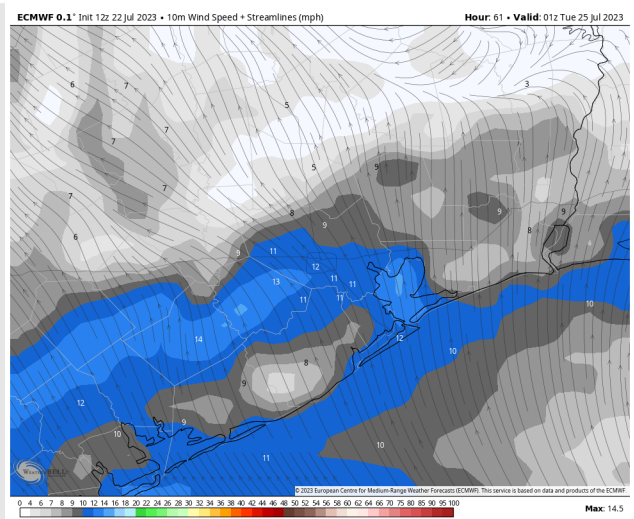
Temps: High temps on Monday will be in the upper 80s F for the Boarding Station, low/mid 90s F for all other Stations S of Morgan's Point and upper 90s near 100 F N of Morgan's Point.

Visibility: Not anticipating any visibility concerns at this time.

Precip Image: 4 PM CT

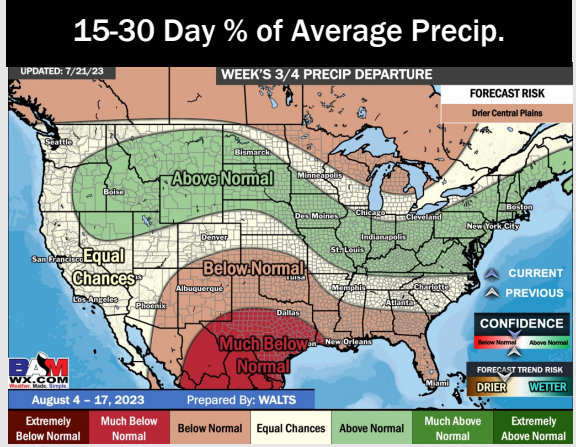
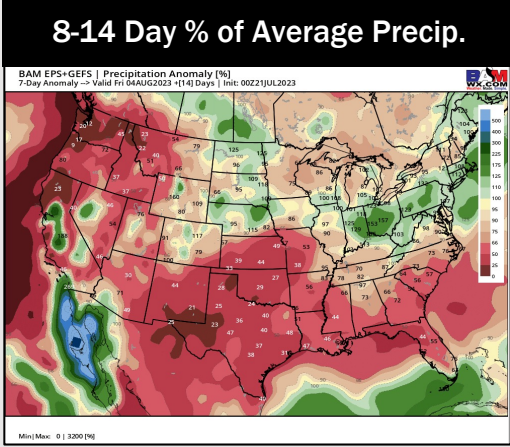
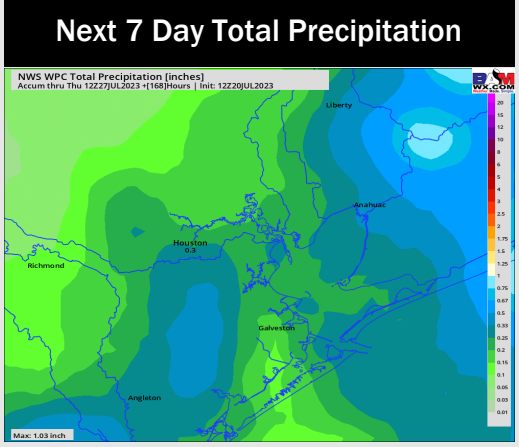
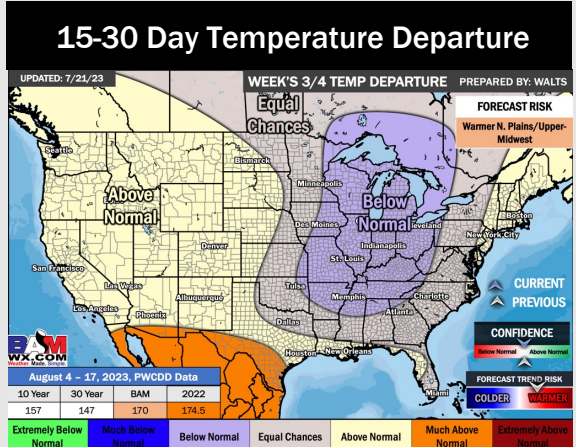
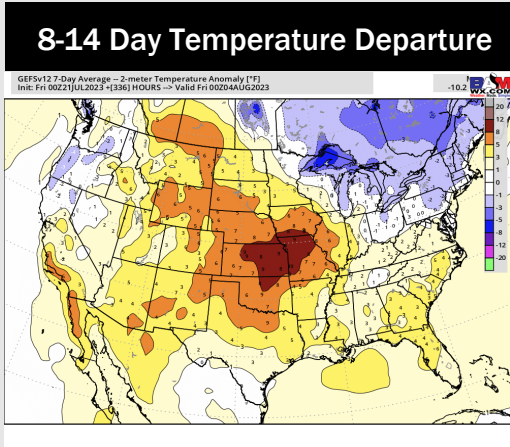
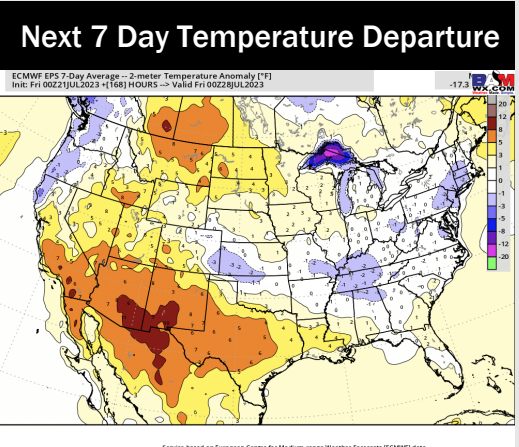


Wind Speed:
8 PM CT



High Temps
Monday

Houston Pilots: 7/22/23



- Above normal temperatures are favored over the next week. Anticipating low-end rain chances to make their way back into the area over the next few days.
- Expecting much below normal precipitation chances and above normal temperatures for the week 2 timeframe.
- Above normal temperatures and much below normal chances for precipitation are favored in the weeks 3/4 timeframe.