

Houston Pilots Forecast Package



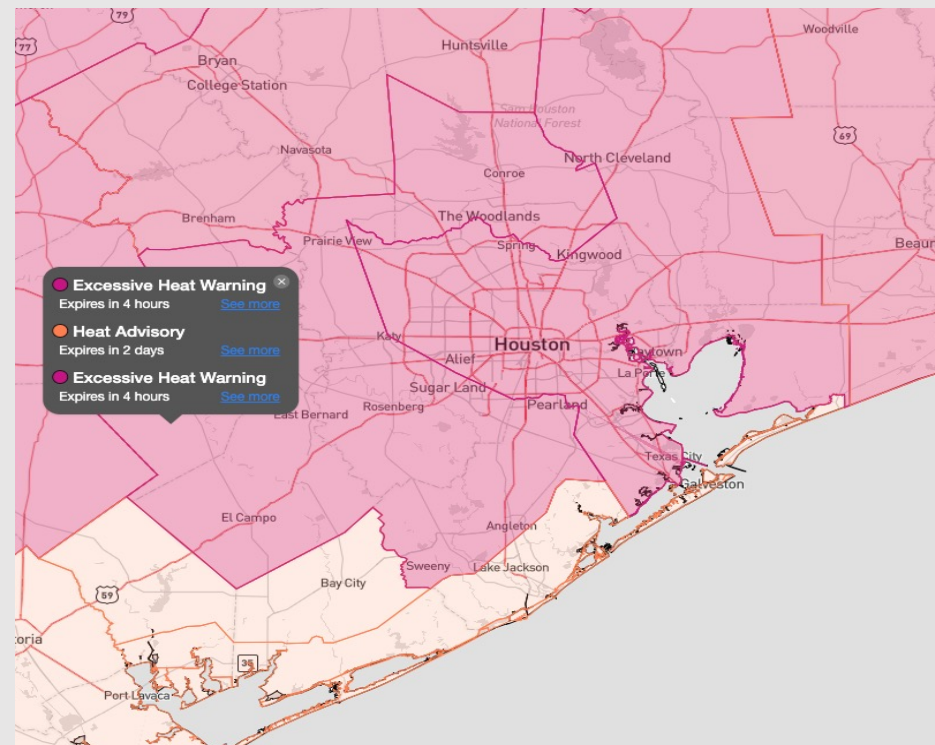
Updated: 4:45 PM CT

Thursday, July 13, 2023

Forecaster: Jonathan Kipper

Weather Headlines

- Dry conditions are favored through early/mid next week.
- Excessive heat concerns (90+ F) to continue throughout at least next week.
- No active tropical threats to SE TX at this time.
- No signals for fog impacting stations moving forward.



Radar/NWS Alerts: 4:30 PM CT

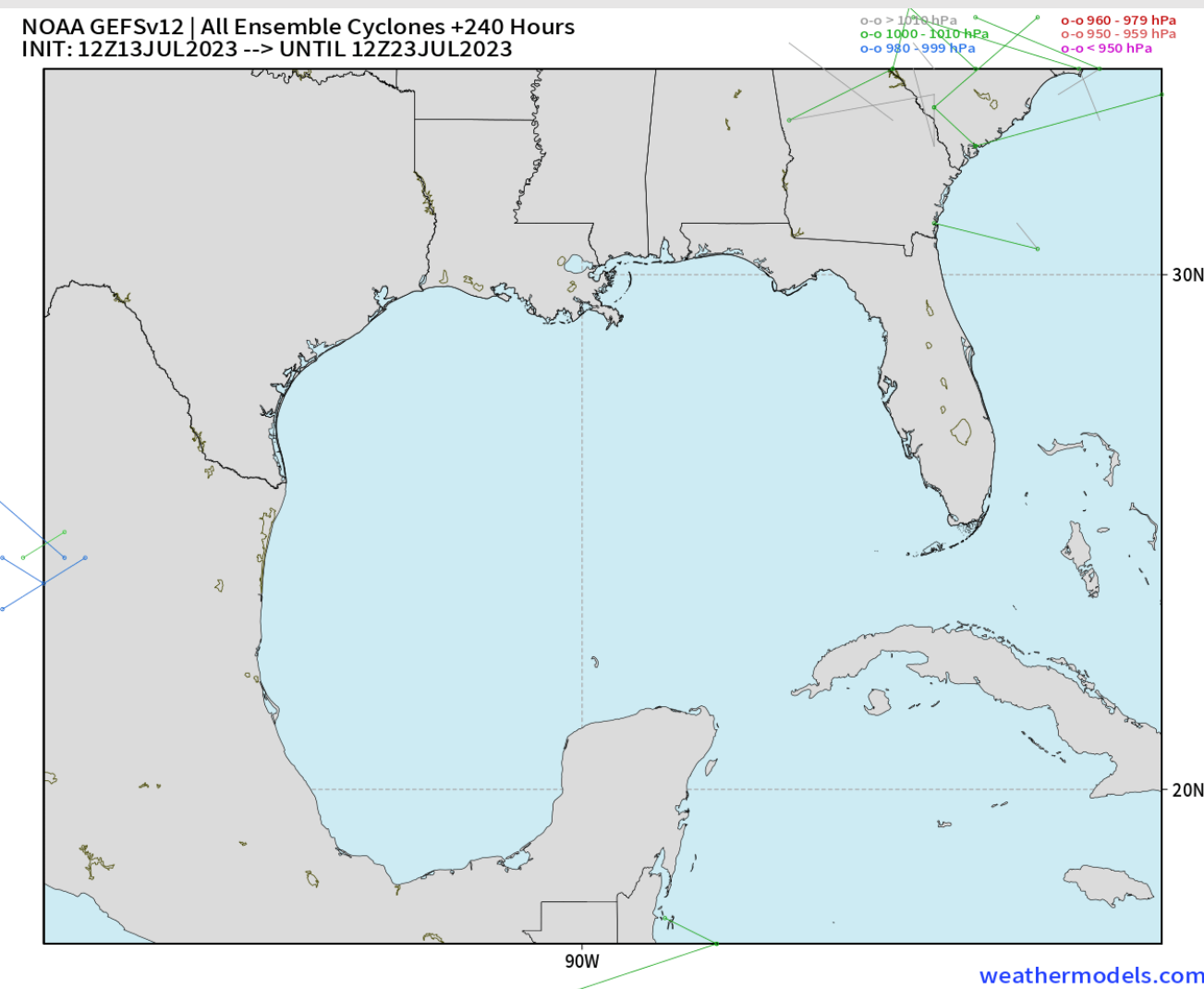


As always, please do not hesitate to reach out to us with any forecast questions via the chat option on the Weather Porthole or our on-call number, **(317)-560-8122** press 1 for forecast questions.

Houston Pilots Tropical Update

American Model Low Pressure Tracks Next 10-Days

NOAA GEFSv12 | All Ensemble Cyclones +240 Hours
INIT: 12Z13JUL2023 --> UNTIL 12Z23JUL2023



No tropical activity
anticipated over the
next 10 days for SE TX.

No other areas of
interest being noted
across the
Atlantic/Gulf.

Houston Pilots Visibility Chart (miles)



Time	Thu 2pm	Thu 3pm	Thu 4pm	Thu 5pm	Thu 6pm	Thu 7pm	Thu 8pm	Thu 9pm	Thu 10pm	Thu 11pm	Fri 12am	Fri 1am	Fri 2am	Fri 3am	Fri 4am	Fri 5am	Fri 6am	Fri 7am	Fri 8am	Fri 9am	Fri 10am	Fri 11am	Fri 12pm	Fri 1pm	Fri 2pm	Fri 3pm	Fri 4pm	Fri 5pm	Fri 6pm	Fri 7pm	Fri 8pm	Fri 9pm	Fri 10pm	Fri 11pm	Sat 12am	Sat 1am
610 Bridge	10	10	10	10	10	10	10	10	10	10	10	10	10	10	10	10	10	8	10	10	10	10	10	10	10	10	10	10	10	10	10	10	10	10	10	10
Kinder 1	10	10	10	10	10	10	10	10	10	10	10	10	10	10	10	10	10	8	10	10	10	10	10	10	10	10	10	10	10	10	10	10	10	10	10	10
Greens Bayou	10	10	10	10	10	10	10	10	10	10	10	10	10	10	10	10	10	8	10	10	10	10	10	10	10	10	10	10	10	10	10	10	10	10	10	10
Shell Crude	10	10	10	10	10	10	10	10	10	10	10	10	10	10	10	10	10	9	10	10	10	10	10	10	10	10	10	10	10	10	10	10	10	10	10	10
Lynchburg Ferries	10	10	10	10	10	10	10	10	10	10	10	10	10	10	10	10	10	10	10	10	10	10	10	10	10	10	10	10	10	10	10	10	10	10	10	10
Exxon 3	10	10	10	10	10	10	10	10	10	10	10	10	10	10	10	10	10	10	10	10	10	10	10	10	10	10	10	10	10	10	10	10	10	10	10	10
Morgans Point	10	10	10	10	10	10	10	10	10	10	10	10	10	10	10	10	10	10	10	10	10	10	10	10	10	10	10	10	10	10	10	10	10	10	10	10
75/76	10	10	10	10	10	10	10	10	10	10	10	10	10	10	10	10	10	10	10	10	10	10	10	10	10	10	10	10	10	10	10	10	10	10	10	10
63/64	10	10	10	10	10	10	10	10	10	10	10	10	10	10	10	10	10	10	10	10	10	10	10	10	10	10	10	10	10	10	10	10	10	10	10	10
51/52	10	10	10	10	10	10	10	10	10	10	10	10	10	10	10	10	10	10	10	10	10	10	10	10	10	10	10	10	10	10	10	10	10	10	10	10
37/38	10	10	10	10	10	10	10	10	10	10	10	10	10	10	10	10	10	10	10	10	10	10	10	10	10	10	10	10	10	10	10	10	10	10	10	10
25/26	10	10	10	10	10	10	10	10	10	10	10	10	10	10	10	10	10	10	10	10	10	10	10	10	10	10	10	10	10	10	10	10	10	10	10	10
11/12	10	10	10	10	10	10	10	10	10	10	10	10	10	10	10	10	10	10	10	10	10	10	10	10	10	10	10	10	10	10	10	10	10	10	10	10
1 & 2 Bravo	10	10	10	10	10	10	10	10	10	10	10	10	10	10	10	10	10	10	10	10	10	10	10	10	10	10	10	10	10	10	10	10	10	10	10	10

NOTE: This is automated data that may/may not agree with the official BAM thinking that’s found on the daily slides or special visibility report slides. This data should be used as a guide only

Houston Pilots Wind Chart



Forecast Confidence



Example

Sustained wind 13 Knots
Gusts 18 Knots
Wind from the N

WS: 13
G:18
N

Time Knots	Thu 2pm	Thu 3pm	Thu 4pm	Thu 5pm	Thu 6pm	Thu 7pm	Thu 8pm	Thu 9pm	Thu 10pm	Thu 11pm	Fri 12am	Fri 1am	Fri 2am	Fri 3am	Fri 4am	Fri 5am	Fri 6am	Fri 7am	Fri 8am	Fri 9am	Fri 10am	Fri 11am	Fri 12pm	Fri 1pm	Fri 2pm	Fri 3pm	Fri 4pm	Fri 5pm	Fri 6pm	Fri 7pm	Fri 8pm	Fri 9pm	Fri 10pm	Fri 11pm	Sat 12am	Sat 1am
610 Bridge	5	5	8	11	11	10	9	9	8	6	5	4	4	4	3	5	5	5	6	7	8	8	7	7	8	9	9	10	11	11	10	9	9	8	8	
	8	7	11	16	17	17	17	17	17	16	15	13	11	10	9	8	8	8	6	9	11	11	10	10	11	12	12	13	14	15	14	14	13	12	12	
Kinder 1	SW	S	S	SSE	S	S	S	S	S	SSW	SSW	SSW	SSW	SSW	SSW	S	SSW	SSW	SSW	SSW	SSW	SSW	SSW	SSW	S	S	S	S	S	S	S	S	S	S		
	5	5	9	12	11	10	9	9	8	6	5	4	4	4	3	5	5	5	6	7	8	8	7	7	8	9	9	10	11	11	10	9	9	8	8	
Greens Bayou	7	7	12	16	17	17	17	17	17	16	15	13	10	10	8	8	8	8	10	9	11	11	10	10	11	12	12	13	14	15	14	14	13	12	12	
	SSW	S	SSE	SSE	SSE	S	S	S	SSW	SSW	SSW	SSW	SSW	SSW	SSW	S	SSW	SSW	SSW	SSW	SSW	SSW	SSW	SSW	S	S	S	S	S	S	S	S	S	S		
Shell Crude	5	7	11	11	12	10	9	8	7	6	5	4	4	4	3	5	5	5	6	7	8	8	7	7	8	9	10	11	12	11	10	9	9	8	8	
	SSW	7	11	16	16	17	17	17	18	17	16	15	13	10	10	9	8	8	10	9	10	10	10	10	11	12	13	14	15	15	14	14	13	12	12	
Lynchburg Ferries	5	SE	SSE	SSE	SSE	S	S	S	S	SSW	SSW	SSW	SSW	SSW	S	SSW	SSW	SSW	SSW	SSW	SSW	SSW	SSW	S	S	S	S	S	S	S	S	S	S	SSW		
	7	15	17	17	17	17	18	17	16	16	13	10	11	9	8	8	8	10	10	10	10	10	10	10	11	13	14	15	16	16	15	14	14	13	12	
Exxon 3	S	SE	SE	SSE	SSE	S	S	S	S	SSW	SSW	SSW	SSW	SSW	S	SSW	SSW	SSW	SSW	SSW	SSW	SSW	SSW	S	S	S	S	S	S	S	S	S	S	SSW		
	7	12	13	12	12	11	10	9	8	6	5	4	4	4	3	7	7	7	7	8	8	8	8	9	10	11	12	13	14	13	12	11	10	9	9	
Morgans Point	9	17	18	17	17	17	18	19	18	16	16	14	12	13	12	9	9	9	10	10	10	10	10	10	12	14	15	16	16	16	15	15	14	13	12	
	SSE	SE	SSE	SSE	SSE	S	S	S	SSW	SSW	SSW	SSW	SSW	SSW	SSW	S	SSW	SSW	SSW	SSW	SSW	SSW	SSW	S	S	S	S	S	S	S	S	S	S	SSW	SSW	
75/76	10	15	14	13	13	12	12	11	10	8	7	6	6	6	6	9	8	8	9	9	9	8	9	10	11	13	14	15	15	14	13	12	11	11	11	
	12	19	19	17	18	18	19	19	19	17	16	14	14	15	14	11	10	10	11	11	11	11	10	11	14	15	16	17	18	17	16	15	14	13	13	
63/64	SE	SE	SSE	SSE	S	S	S	S	SSW	SSW	SSW	SSW	SSW	SSW	SSW	S	SSW	SSW	SSW	SSW	SSW	SSW	SSW	S	SSE	S	S	S	S	S	S	S	S	SSW	SSW	
	13	16	15	15	15	15	16	16	15	14	12	11	11	11	10	12	12	11	11	11	10	11	11	12	14	15	16	16	17	17	16	15	14	14	13	
51/52	14	18	18	18	18	19	20	20	20	18	17	16	16	16	15	13	12	12	12	12	11	12	13	14	15	17	17	18	19	18	18	16	15	15	15	
	SE	SSE	SSE	S	S	S	S	S	SSW	SSW	SSW	SSW	SSW	SSW	SSW	SSW	SSW	SSW	SSW	SSW	SSW	SSW	S	S	S	S	S	S	S	S	S	S	S	SSW	SSW	
37/38	12	14	15	15	15	16	16	16	15	13	12	11	11	11	10	12	11	11	11	11	10	11	12	12	13	15	16	16	16	15	14	13	13	13	13	
	13	16	18	18	18	19	20	20	20	18	17	16	16	16	15	13	12	12	12	12	12	12	13	13	14	15	16	16	16	15	14	13	12	13	13	
25/26	S	SSE	S	S	S	S	S	S	SSW	SSW	SSW	SSW	SSW	SSW	SSW	S	SSW	SSW	SSW	SSW	SSW	SSW	SSW	S	S	S	S	S	S	S	S	S	S	S	SSW	
	11	13	14	14	14	14	14	14	13	12	11	11	10	10	10	10	10	10	10	10	10	10	11	12	12	12	13	13	13	12	11	11	11	11	11	
11/12	12	15	17	17	17	18	18	19	19	18	16	15	16	15	12	12	12	12	12	12	12	12	13	13	14	14	14	14	14	13	12	12	13	13	13	
	S	SSE	S	S	S	S	S	S	SSW	SSW	SSW	SSW	SSW	SSW	SSW	SSW	SSW	SSW	SSW	SSW	SSW	SSW	SSW	S	S	S	S	S	S	S	S	S	S	S	SSW	
1 & 2 Bravo	10	12	14	14	14	15	15	17	16	15	15	13	13	14	13	13	13	12	12	11	11	10	11	10	11	11	12	13	13	13	13	13	13	13	14	
	10	13	16	16	16	18	18	19	19	18	17	16	16	16	15	14	14	13	13	12	12	12	12	12	12	12	13	14	14	14	14	14	14	14	15	
	S	S	S	S	S	SSW	SSW	SSW	SSW	SSW	SSW	SSW	SSW	SSW	SSW	SSW	SSW	SSW	SSW	SSW	SSW	SSW	SSW	SSW	SSW	SSW	SSW	S	S	S	S	S	S	S	S	

NOTE: This is automated data that may/may not agree with the official BAM thinking that's found on the daily slides.
This data should be used as a guide only

Houston Pilots: Thu. 7/13/2023

Forecast Discussion

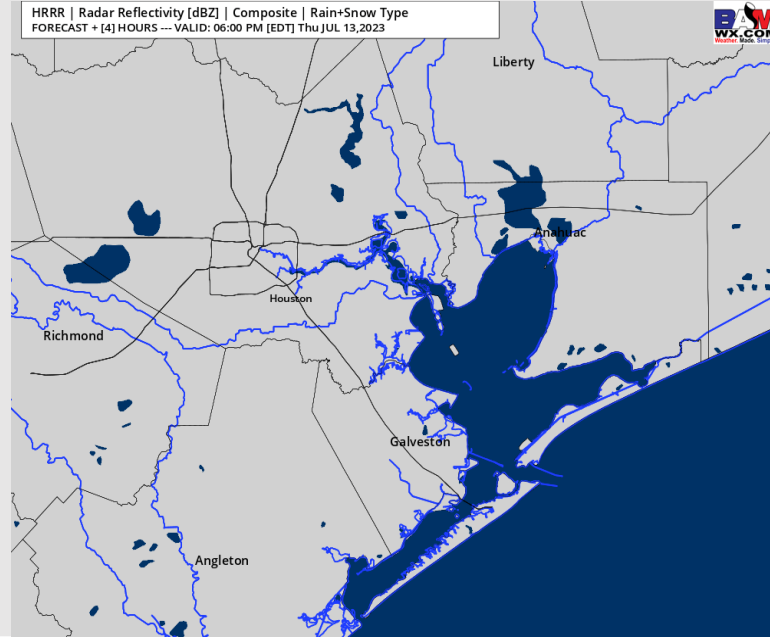
Precip: Favoring dry conditions throughout the rest of the day.

Wind: Winds will be out of the S/SW throughout the remainder of the day. Stations N of Morgan's Point will see winds of 10-15 kts through 9 PM before decreasing to 6-11 kts. Winds S of Morgan's Point will be 16 – 21 kts for the rest of the day. **Wind gusts of 20-25 kts are possible for all stations.**

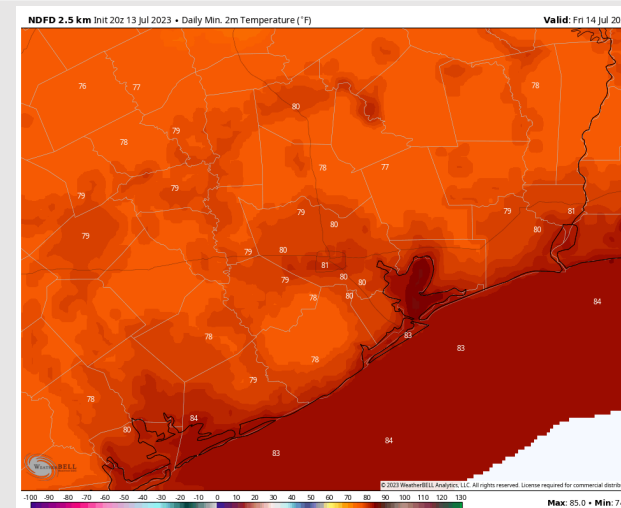
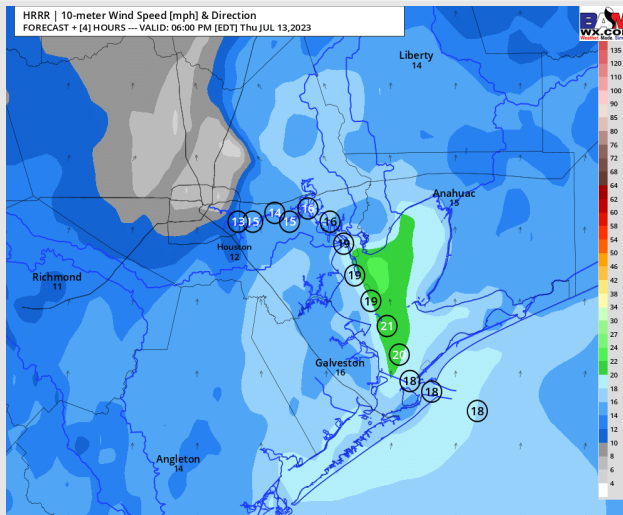
Temps: Low temperatures on Friday will be in the low/mid 80's F across all stations.

Visibility: Not anticipating any visibility concerns at this time.

Precip Image: 5 PM CT



Wind Speed:
5 PM CT



Low Temps
Friday

Houston Pilots: Fri. 7/14/2023

Forecast Discussion

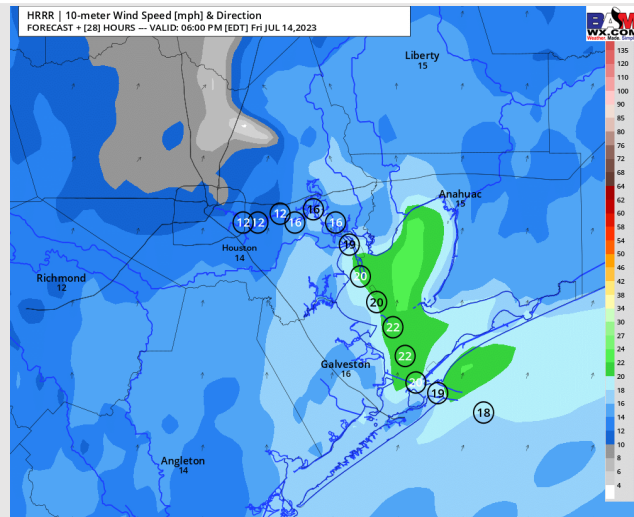
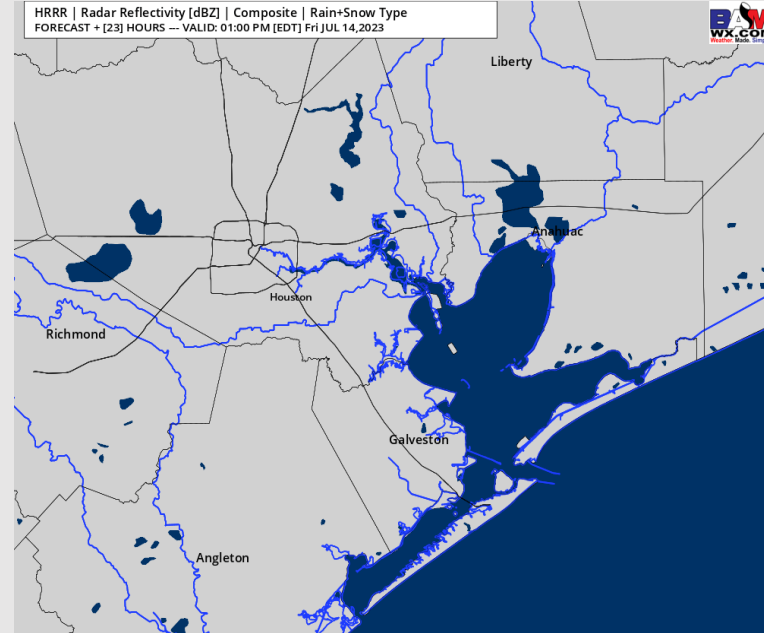
Precip: Favoring dry conditions throughout the day Friday.

Wind: Winds will be out of the S/SW throughout the day Friday. Winds N of Morgan's Point will be 4-9 kts through 3 PM. After 3 PM, winds N of Morgan's Point will increase to 10-15 kts for the rest of the day. Winds S of Morgan's Point will be 13-18 kts until 8 AM. Then winds will decrease to 9-14 kts through 1 PM. After 1 PM, winds S of Morgan's Point will increase to 15-20 kts and remain that way for the rest of the day. **Winds Gusts of 18-23 kts are possible for all stations before 9 AM and after 3 PM Friday.**

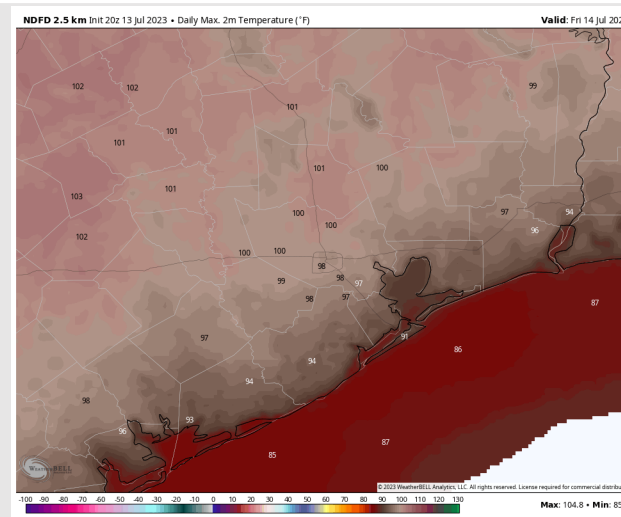
Temps: High temperatures Friday will be in the mid/upper 80s F near the Boarding Station, in the low/mid 90s F for all other stations S of Morgan's Point, and in the upper 90s F N of Morgan's Point.

Visibility: Not anticipating any visibility concerns at this time.

Precip Image: 12 PM CT



Wind Speed:
5 PM CT



High Temps
Friday

Houston Pilots: sat. 7/15/2023

Forecast Discussion

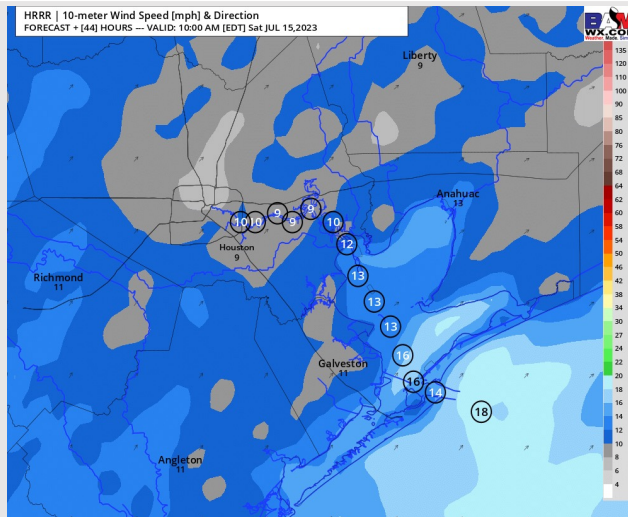
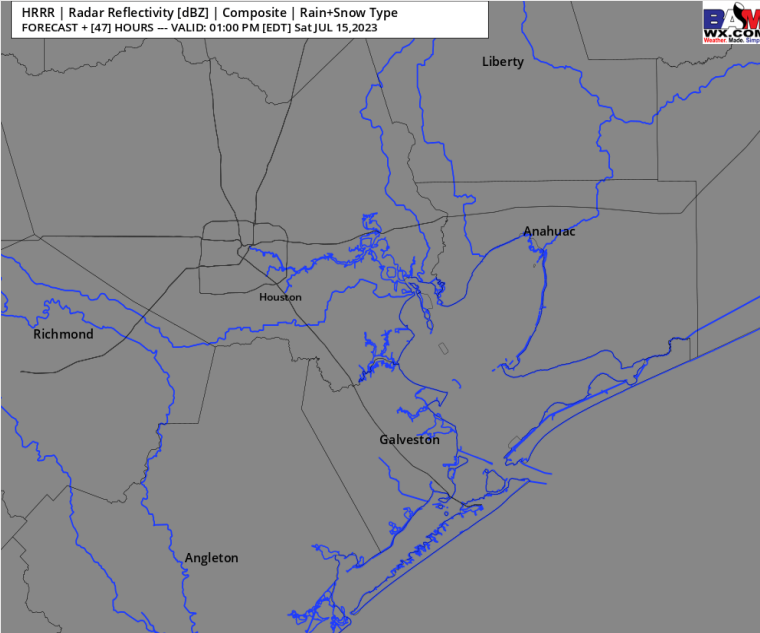
Precip: Favoring dry conditions throughout the day Saturday.

Wind: Winds will be out of the S/SW throughout the day Saturday. Winds N of Morgan's point will be 4 - 9 kts until 7 PM when then winds will increase to 8 – 13 kts for the rest of the day. Winds S of Morgan's Point will be 11-16 kts until 10 AM. After 10 AM winds will decrease to 7-11 kts until 1 PM when then winds will increase back to 11-16 kts and remain that way for the rest of the day.

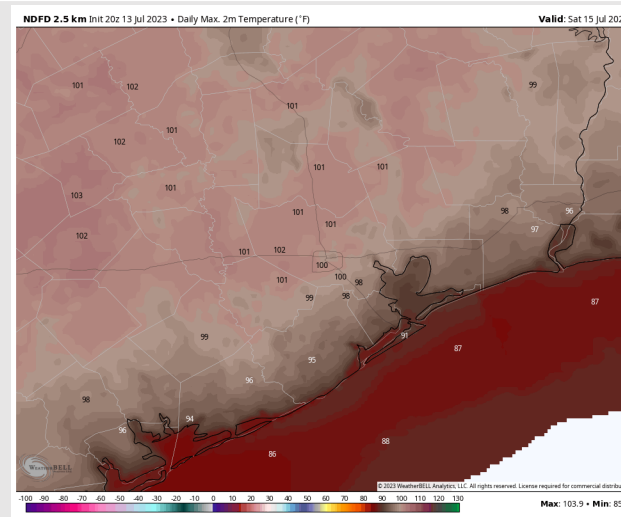
Temps: High temperatures Saturday will be in the upper 80s F near the Boarding Station, in the low/mid 90s F for all other stations S of Morgan's Point, and near 100 F for stations N of Morgan's Point.

Visibility: Not anticipating any visibility concerns at this time.

Precip Image: 12 PM CT



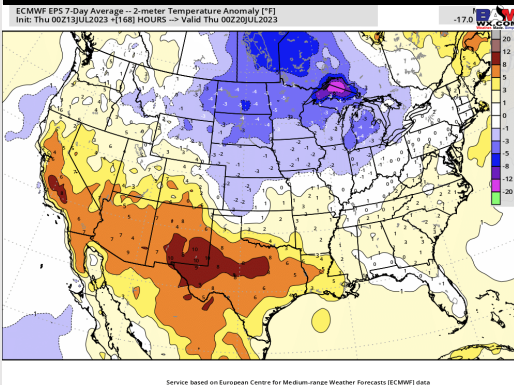
Wind Speed:
9 AM CT



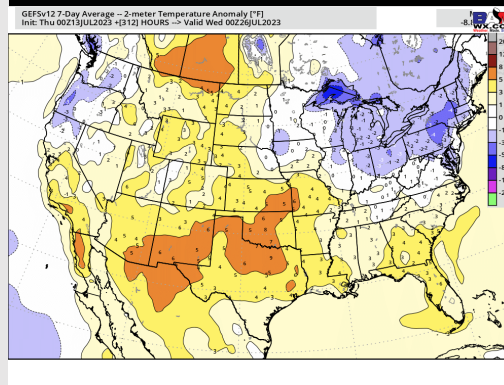
High Temps
Saturday

Houston Pilots: 7/13/23

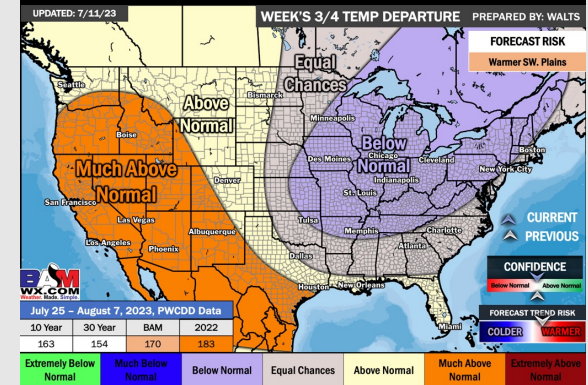
Next 7 Day Temperature Departure



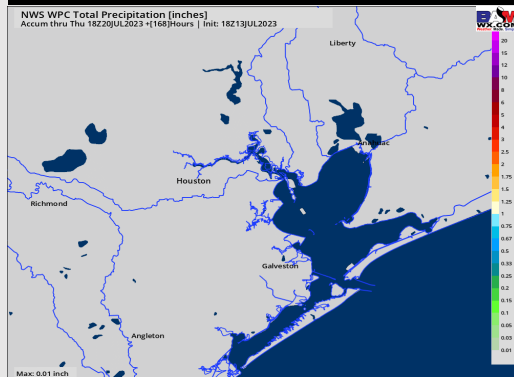
8-14 Day Temperature Departure



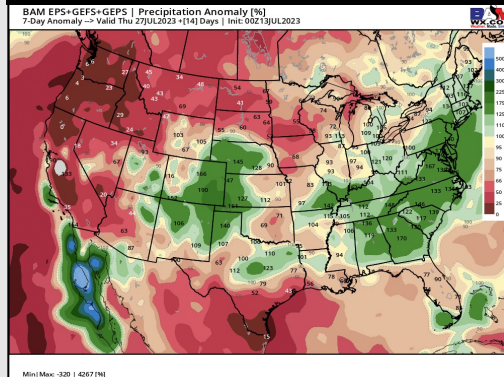
15-30 Day Temperature Departure



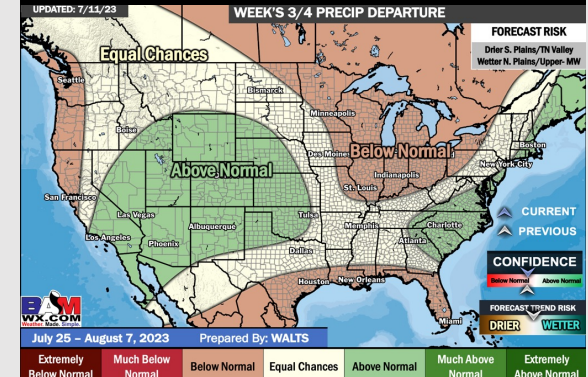
Next 7 Day Total Precipitation



8-14 Day % of Average Precip.



15-30 Day % of Average Precip.



- Above normal temperatures are favored over the next week. Below normal precipitation chances are favored for this week with little to no precip anticipated.
- Expecting below normal precipitation chances and above normal temperatures for the week 2 timeframe.
- Slightly above normal temperatures and below normal chances for precipitation are favored in the weeks $\frac{3}{4}$ timeframe.