

# Houston Pilots Forecast Package



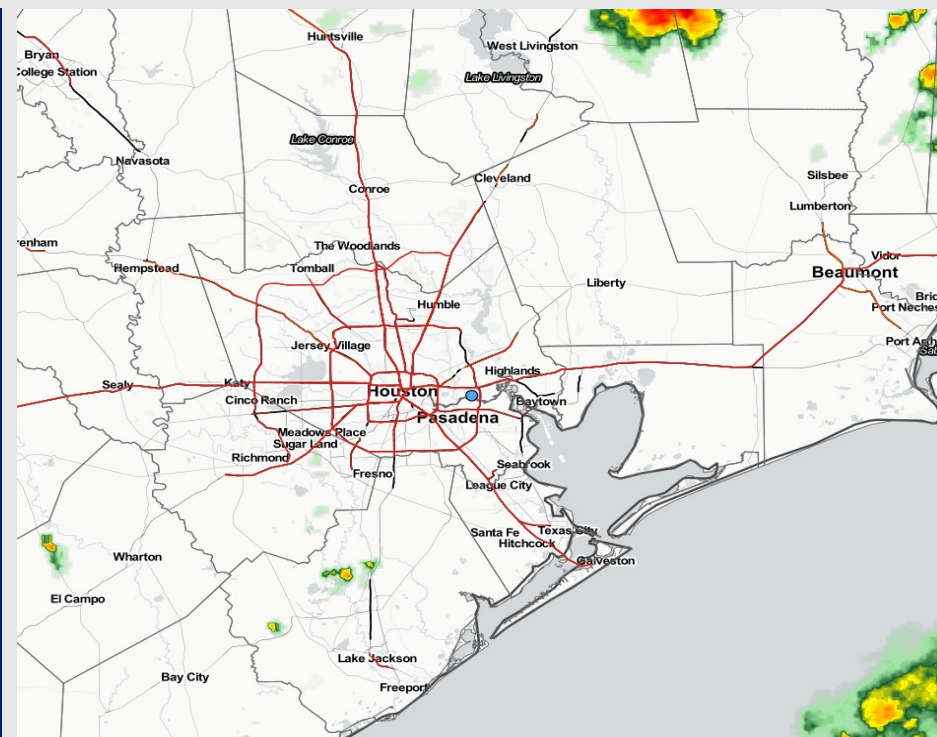
Updated: 2:15 PM CT

Friday, July 7, 2023

Forecaster: Jonathan Kipper

## Weather Headlines

- Scattered hit/miss rain chances will still be present throughout the weekend, especially in the afternoon hours.
- Excessive heat concerns (90+ F) to continue throughout at least next week.
- No active tropical threats to SE TX at this time.
- No signals for fog impacting stations moving forward.



**Radar/NWS Alerts: 2:15 PM CT**



As always, please do not hesitate to reach out to us with any forecast questions via the chat option on the Weather Porthole or our on-call number, **(317)-560-8122** press 1 for forecast questions.

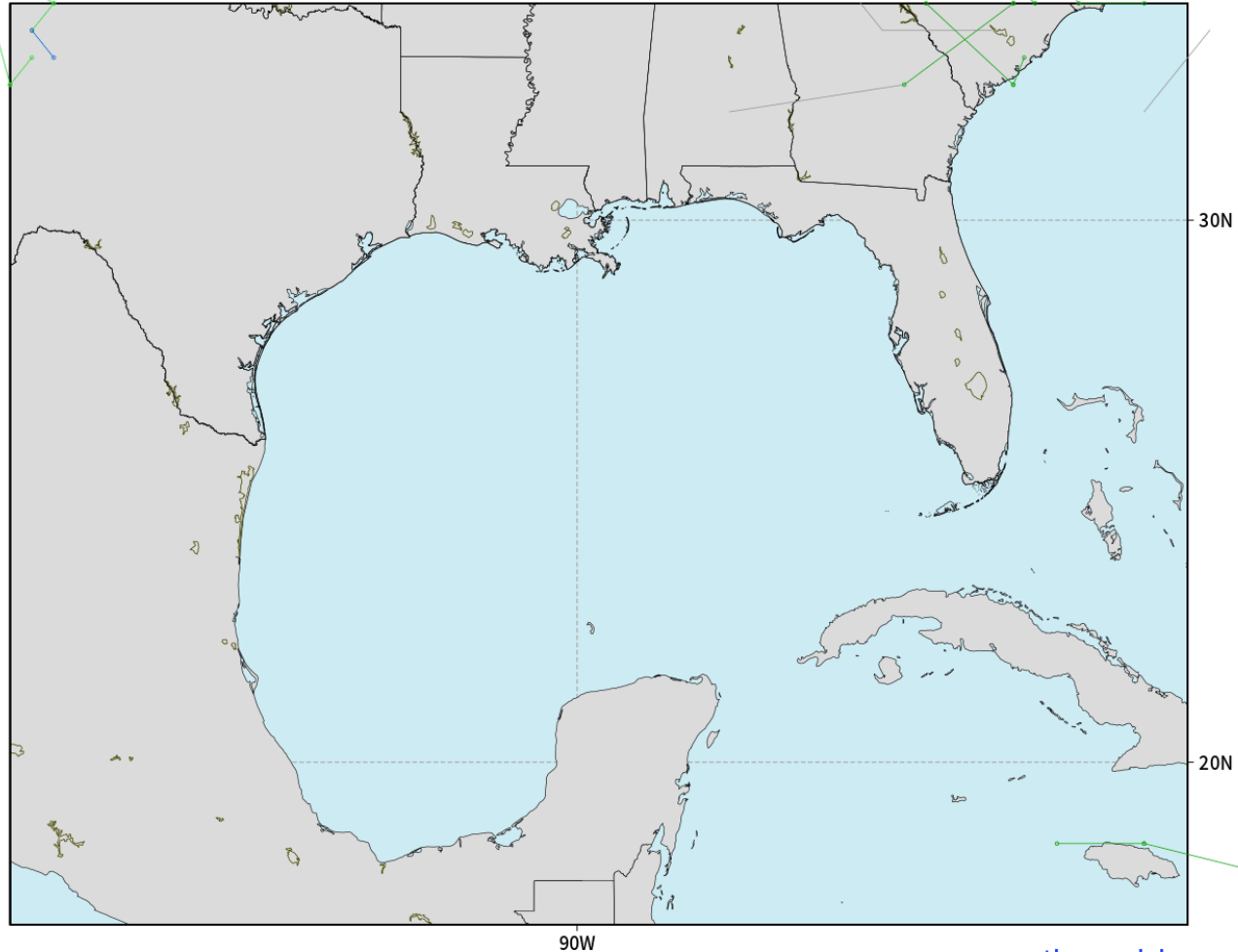
# Houston Pilots Tropical Update

## American Model Low Pressure Tracks Next 10-Days

NOAA GEFSv12 | All Ensemble Cyclones +240 Hours  
INIT: 06Z07JUL2023 --> UNTIL 06Z17JUL2023

o-o > 1010 hPa  
o-o 1000 - 1010 hPa  
o-o 980 - 999 hPa

o-o 960 - 979 hPa  
o-o 950 - 959 hPa  
o-o < 950 hPa



[weathermodels.com](http://weathermodels.com)

No tropical activity  
anticipated over the  
next 10 days for SE TX.

No other areas of  
interest being noted  
across the  
Atlantic/Gulf.

# Houston Pilots Visibility Chart (miles)



Time	Fri 12pm	Fri 1pm	Fri 2pm	Fri 3pm	Fri 4pm	Fri 5pm	Fri 6pm	Fri 7pm	Fri 8pm	Fri 9pm	Fri 10pm	Fri 11pm	Sat 12am	Sat 1am	Sat 2am	Sat 3am	Sat 4am	Sat 5am	Sat 6am	Sat 7am	Sat 8am	Sat 9am	Sat 10am	Sat 11am	Sat 12pm	Sat 1pm	Sat 2pm	Sat 3pm	Sat 4pm	Sat 5pm	Sat 6pm	Sat 7pm	Sat 8pm
610 Bridge	10	10	10	10	10	10	10	10	10	10	10	10	10	10	10	10	10	10	10	10	10	10	10	10	10	10	10	10	10	10	10	10	
Kinder 1	10	10	10	10	10	10	10	10	10	10	10	10	10	10	10	10	10	10	10	10	10	10	10	10	10	10	10	10	10	10	10	10	
Greens Bayou	10	10	10	10	10	10	10	10	10	10	10	10	10	10	10	10	10	10	10	10	10	10	10	10	10	10	10	10	10	10	10	10	
Shell Crude	10	10	10	10	10	10	10	10	10	10	10	10	10	10	10	10	10	10	10	10	10	10	10	10	10	10	10	10	10	10	10	10	
Lynchburg Ferries	10	10	10	10	10	10	10	10	10	10	10	10	10	10	10	10	10	10	10	10	10	10	10	10	10	10	10	10	10	10	10	10	
Exxon 3	10	10	10	10	10	10	10	10	10	10	10	10	10	10	10	10	10	10	10	10	10	10	10	10	10	10	10	10	10	10	10	10	
Morgans Point	10	10	10	10	10	10	10	10	10	10	10	10	10	10	10	10	10	10	10	10	10	10	10	10	10	10	10	10	10	10	10	10	
75/76	10	10	10	10	10	10	10	10	10	10	10	10	10	10	10	10	10	10	10	10	10	10	10	10	10	10	10	10	10	10	10	10	
63/64	10	10	10	10	10	10	10	10	10	10	10	10	10	10	10	10	10	10	10	10	10	10	10	10	10	10	10	10	10	10	10	10	
51/52	10	10	10	10	10	10	10	10	10	10	10	10	10	10	10	10	10	10	10	10	10	10	10	10	10	10	10	10	10	10	10	10	
37/38	10	10	10	10	10	10	10	10	10	10	10	10	10	10	10	10	10	10	10	10	10	10	10	10	10	10	10	10	10	10	10	10	
25/26	10	10	10	10	10	10	10	10	10	10	10	10	10	10	10	10	10	10	10	10	10	10	10	10	10	10	10	10	10	10	10	10	
11/12	10	10	10	10	10	10	10	10	10	10	10	10	10	10	10	10	10	10	10	10	10	10	10	10	10	10	10	10	10	10	10	10	
1 & 2 Bravo	10	10	10	10	10	10	10	10	10	10	10	10	10	10	10	10	10	10	10	10	10	10	10	10	10	10	10	10	10	10	10	10	

NOTE: This is automated data that may/may not agree with the official BAM thinking that’s found on the daily slides or special visibility report slides. This data should be used as a guide only

# Houston Pilots Wind Chart



**Example**

Sustained wind 13 Knots  
Gusts 18 Knots  
Wind from the N

WS: 13  
G:18  
N

Time Knots	Fri 12pm	Fri 1pm	Fri 2pm	Fri 3pm	Fri 4pm	Fri 5pm	Fri 6pm	Fri 7pm	Fri 8pm	Fri 9pm	Fri 10pm	Fri 11pm	Sat 12am	Sat 1am	Sat 2am	Sat 3am	Sat 4am	Sat 5am	Sat 6am	Sat 7am	Sat 8am	Sat 9am	Sat 10am	Sat 11am	Sat 12pm	Sat 1pm	Sat 2pm	Sat 3pm	Sat 4pm	Sat 5pm	Sat 6pm	Sat 7pm	Sat 8pm
610 Bridge	6	7	7	7	7	8	8	8	8	6	6	6	5	5	5	4	4	3	2	2	3	4	5	6	6	6	6	6	7	7	8	9	9
	9	10	10	10	11	10	11	10	10	9	10	9	8	8	7	6	6	4	4	3	3	6	8	8	8	8	8	10	11	11	11	11	
	S	S	S	S	SSE	S	S	S	S	S	S	S	S	S	S	S	S	S	S	S	S	SSW	SSW	SSW	SSW	S	S	SSE	SSE	S	S	S	
Kinder 1	6	6	7	7	7	8	9	8	7	6	6	6	5	5	5	4	4	3	2	2	3	4	5	6	6	6	6	7	7	8	9	9	9
	9	10	10	10	10	11	11	10	10	9	10	9	8	8	7	6	6	4	4	3	5	6	8	8	8	8	8	10	10	11	11	11	
	S	S	S	S	S	SSE	S	S	S	S	S	S	S	S	S	S	S	S	S	S	S	SSW	SSW	SSW	SSW	S	S	SSE	SSE	S	S	S	
Greens Bayou	6	7	7	7	7	8	9	8	7	6	6	6	5	5	5	4	4	2	2	2	3	4	5	6	6	6	7	8	7	9	9	8	
	9	9	10	10	10	11	11	10	10	9	9	9	8	7	7	6	6	4	4	3	5	6	8	8	8	8	9	10	10	11	11	11	
	S	S	S	S	S	SSE	S	SSE	S	S	S	S	S	S	S	S	S	S	S	S	S	SSW	SSW	SSW	SSW	S	SSE	SE	SSE	S	S	S	
Shell Crude	7	7	7	7	8	8	9	9	8	7	6	6	5	5	5	4	4	3	2	2	4	5	5	6	6	6	7	8	8	9	10	9	9
	9	9	10	10	11	11	11	10	10	9	9	9	8	7	7	6	6	4	4	4	6	7	8	8	8	8	9	10	10	11	12	11	
	S	S	S	S	S	SSE	S	S	S	S	S	S	S	S	S	S	S	S	S	S	SSW	SSW	SSW	S	S	SSE	SSW	SSE	S	S	S	S	
Lynchburg Ferries	7	7	8	8	9	9	10	9	8	7	7	6	6	5	5	4	3	3	3	4	5	6	6	6	7	8	9	9	10	11	10	9	
	9	9	10	11	11	12	11	11	10	10	10	9	8	8	7	7	6	5	4	4	6	7	8	8	8	8	10	11	11	12	12	12	
	S	S	S	S	S	SSE	SSE	SSE	S	S	S	S	S	S	S	SSW	SSW	S	S	S	SSW	SSW	SSW	S	S	SSE	SSE	SSE	S	S	S	S	
Exxon 3	7	7	8	9	9	10	10	10	8	8	7	7	7	6	6	6	5	4	4	4	4	5	6	6	7	7	8	9	9	11	11	10	
	9	10	10	11	12	12	12	12	11	10	10	9	9	8	8	7	6	5	5	5	6	7	8	8	8	8	10	11	11	13	13	13	
	S	S	S	S	S	SSE	SSE	SSE	S	S	S	S	S	S	S	SSW	SSW	S	S	S	SSW	SSW	SSW	S	S	SSE	SSE	SSE	S	S	S	S	
Morgans Point	7	8	9	10	10	11	11	11	10	9	9	8	8	8	8	7	7	6	5	5	5	6	6	7	7	8	9	11	11	12	13	12	
	10	10	11	12	12	13	13	13	12	11	11	10	10	10	10	9	8	7	7	6	7	8	8	8	8	9	11	12	13	14	14	14	
	S	S	S	S	S	SSE	SSE	S	S	S	S	S	S	S	S	SSW	SSW	SSW	SSW	S	SSW	SSW	SSW	S	SSE	SSE	SSE	SSE	S	S	S	S	
75/76	8	8	9	11	11	13	13	13	12	12	11	10	10	11	10	10	9	8	7	7	7	7	7	7	8	9	11	12	12	14	15	14	
	10	11	12	12	13	14	15	15	14	13	12	12	11	12	12	11	10	9	8	8	8	8	8	9	9	10	12	13	14	16	17	16	
	S	S	S	S	S	SSE	SSE	S	S	S	S	S	S	S	S	SSW	SSW	SSW	SSW	SSW	SSW	SSW	SSW	S	SSE	SSE	SSE	SSE	S	S	S	S	
63/64	8	8	9	10	11	13	13	13	12	11	11	10	10	11	11	10	9	8	8	8	8	7	8	8	9	11	12	12	14	15	15	15	
	10	11	12	12	13	14	14	15	13	12	12	11	11	12	12	11	10	10	9	8	9	8	9	9	10	12	13	14	15	16	16		
	S	S	S	S	S	SSE	SSE	S	S	S	S	S	S	S	S	SSW	SSW	SSW	SSW	SSW	SSW	SSW	SSW	S	SSE	SSE	SSE	SSE	S	SSW	S	S	
51/52	8	8	10	10	11	12	12	12	11	10	10	10	10	11	11	10	9	8	8	8	8	7	8	8	9	10	11	12	13	14	14	14	
	10	11	11	11	12	13	13	14	12	11	11	11	11	12	12	11	10	10	9	8	9	8	8	9	10	12	12	13	14	15	15		
	S	S	S	S	S	SSE	SSE	S	S	S	S	S	S	S	S	S	SSW	SSW	SSW	SSW	SSW	SSW	S	S	SSE	SSE	SSE	S	S	SSW	S	S	
37/38	8	8	10	9	10	11	11	11	10	9	9	9	10	10	10	10	9	9	8	8	8	7	8	8	9	10	11	11	12	12	12	12	
	10	11	11	11	12	12	12	12	11	10	10	10	11	11	11	11	10	9	8	8	8	9	8	9	10	11	12	13	14	14	14		
	S	S	S	S	S	SSE	S	S	S	S	S	S	S	S	S	S	SSW	SSW	SSW	SSW	SSW	SSW	S	S	SSE	S	S	S	S	SSW	S	S	
25/26	8	8	9	9	9	9	9	9	8	8	8	8	8	9	9	9	8	8	7	7	7	7	7	8	8	8	9	10	10	10	10	10	
	10	10	11	10	11	11	11	10	10	9	9	9	10	11	11	10	9	8	8	8	8	8	8	8	9	10	11	11	11	12	12		
	S	S	S	S	S	SSE	S	S	S	S	S	S	S	S	S	S	S	S	S	S	S	SSW	SSW	SSW	S	S	S	S	S	S	S	S	
11/12	8	8	9	8	9	9	9	9	8	8	8	8	9	9	10	9	8	7	7	7	7	8	7	8	8	8	9	9	10	10	10	10	
	10	10	10	10	11	11	11	10	10	9	9	10	10	11	11	10	9	8	8	8	8	8	8	8	9	10	11	11	11	11	11	12	
	S	S	S	S	S	SSE	S	SSE	S	S	S	S	S	S	S	S	SSW	SSW	SSW	SSW	SSW	SSW	SSW	S	S	S	S	S	S	S	S	S	
1 & 2 Bravo	8	8	9	9	10	9	9	9	9	9	9	10	10	11	11	11	11	10	9	9	9	8	8	8	8	7	8	9	9	10	11	12	
	10	10	10	10	11	11	11	10	10	10	11	11	11	12	12	12	12	11	10	9	10	9	9	9	9	9	10	10	11	11	12	12	
	S	S	S	S	S	S	S	SSE	S	S	S	S	S	S	S	S	SSW	SSW	SSW	SSW	SSW	SSW	SSW	S	S	S	S	S	S	S	S	SSW	

NOTE: This is automated data that may/may not agree with the official BAM thinking that's found on the daily slides.  
This data should be used as a guide only

# Houston Pilots: Fri. 7/7/2023

## Forecast Discussion

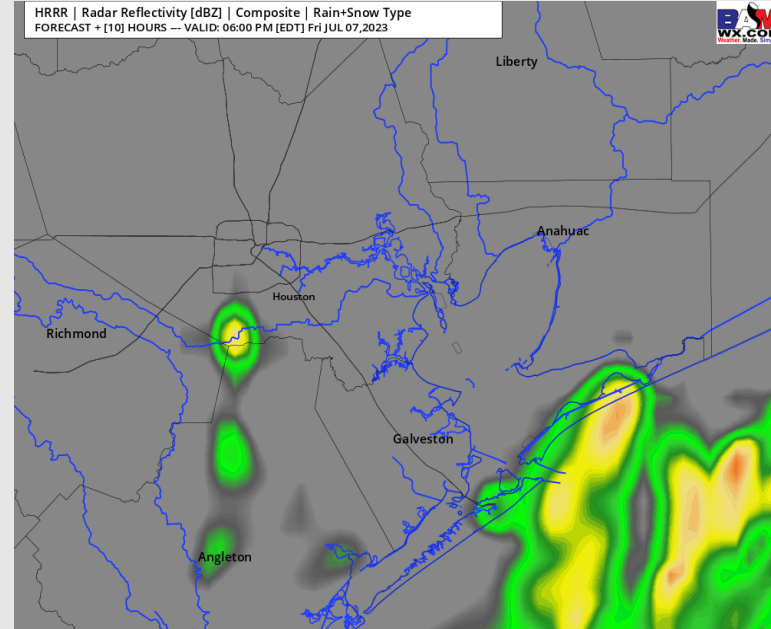
**Precip:** Scattered showers/thunderstorms will continue across the area through 7 PM, with the greatest risk being near the Boarding Station. Anticipating dry conditions after 7 PM.

**Wind:** Winds will be out of the S/SW throughout the remainder of the day. Winds N of Morgan's Point will continue to be at 5 – 10 kts, with winds S of Morgan's Point increasing to 11 - 16 kts by 4 PM and remain that way the rest of the day. **Gusts of 23-28 kts are possible under the strongest cells today.**

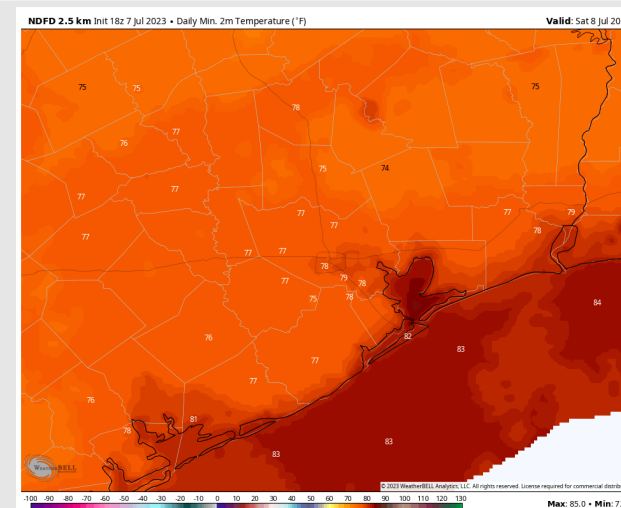
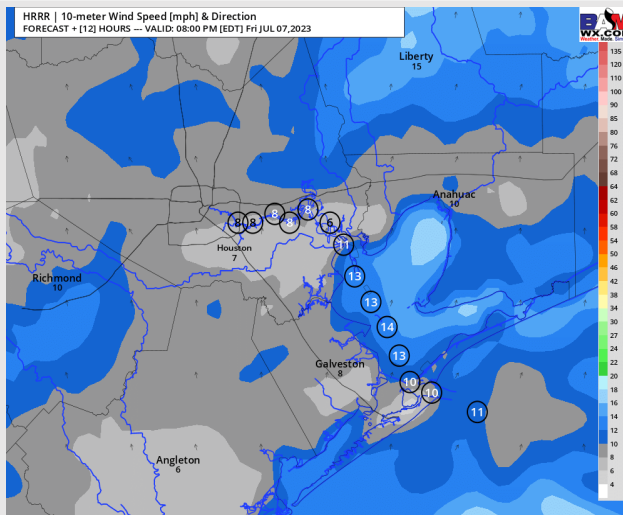
**Temps:** Low temperatures on Saturday will be in the low 80s F S of Morgan's Point and upper 70s F N of Morgan's Point.

**Visibility:** Not anticipating any visibility concerns at this time.

## Precip Image: 5 PM CT



**Wind Speed:  
7 PM CT**



**Low Temps  
Saturday**



# Houston Pilots: Sat. 7/8/2023

## Forecast Discussion

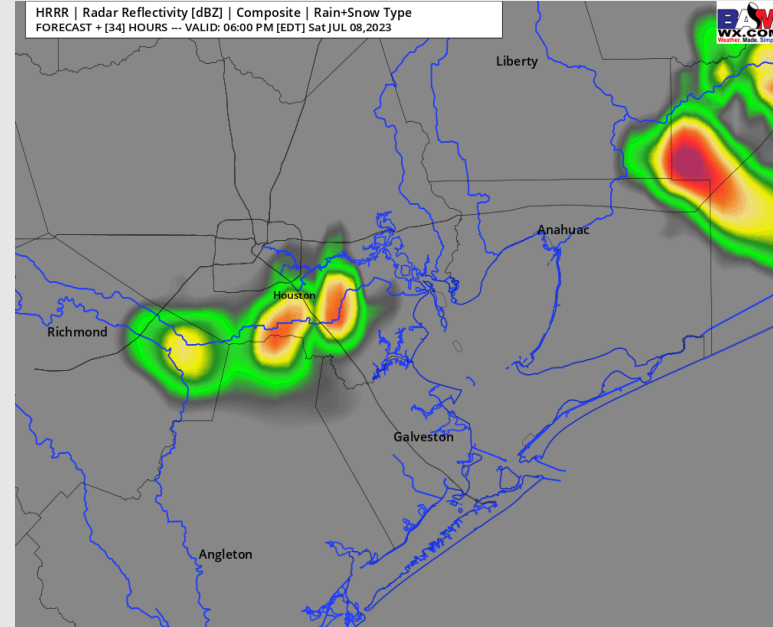
**Precip:** Favoring dry conditions for most of the day Saturday aside for a 30-40% chance of a few scattered showers/storms between 2 PM - 7 PM. After 7 PM favoring dry conditions for the rest of the day.

**Wind:** Winds will be out of the S/SW throughout the day Saturday. Winds N of Morgan's Point will be 2-7 kts until 3 PM. After 3 PM, winds N of Morgan's Point will pick up to 5-10 kts for the rest of the day. Winds S of Morgan's Point will be 11-16 kts through 4 AM before decreasing to 2-7 kts between 4 AM – 1 PM. After 1 PM winds will pick back up to 13 – 18 kts for the rest of the day.

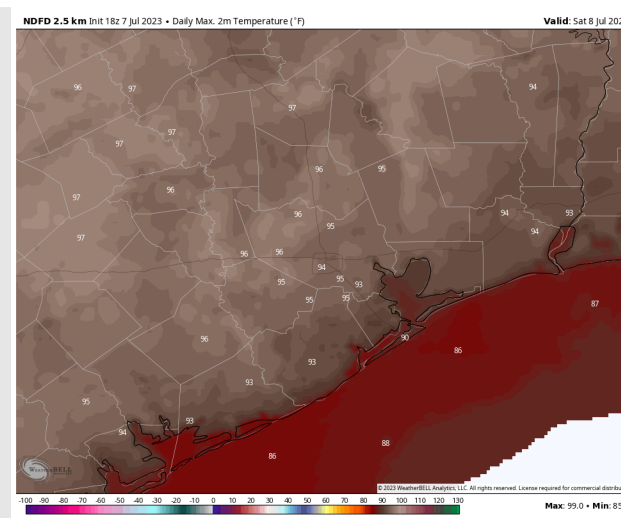
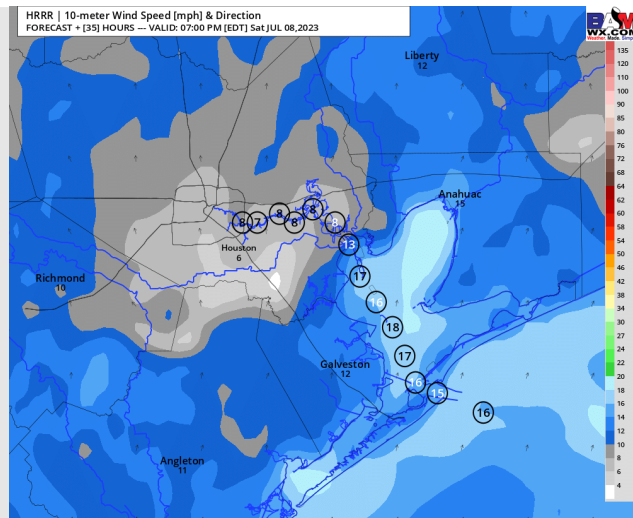
**Temps:** High temperatures Saturday will be in the mid/upper 80s F near the Boarding Station, in the upper 80s F/low 90s F for all other stations S of Morgan's Point, and in the mid 90s F for stations N of Morgan's Point.

**Visibility:** Not anticipating any visibility concerns at this time.

## Precip Image: 5 PM CT



**Wind Speed:**  
6 PM CT



**High Temps**  
**Saturday**

# Houston Pilots: Sun. 7/9/2023

## Forecast Discussion

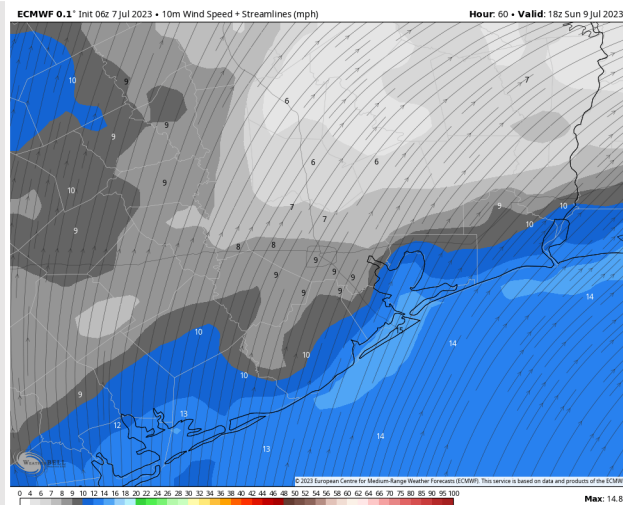
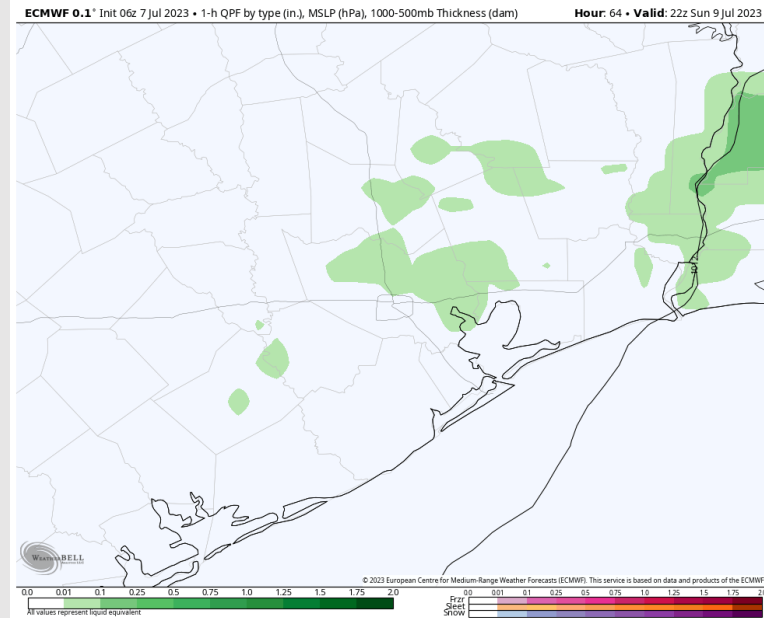
**Precip:** Anticipating dry conditions through noon on Sunday, with a 20% chance for scattered showers will be possible after 12 PM for locations N of Morgan's Point.

**Wind:** Winds will be out of the S/SW all day Sunday. Winds N of Morgan's Point will be 4 – 9 kts throughout the day Sunday. Winds S of Morgan's point will be 11 - 16 kts throughout the day Sunday.

**Temps:** High temps Sunday will be in the mid 80s F at the Boarding Station, low 90s F for all other Stations S of Morgan's Point and mid 90s F N of Morgan's Point.

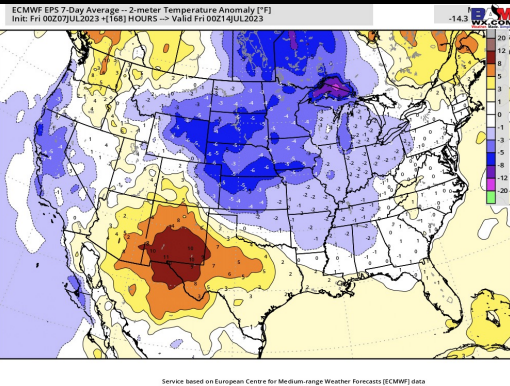
**Visibility:** Not anticipating any visibility concerns at this time.

## Precip Image: 4 PM CT

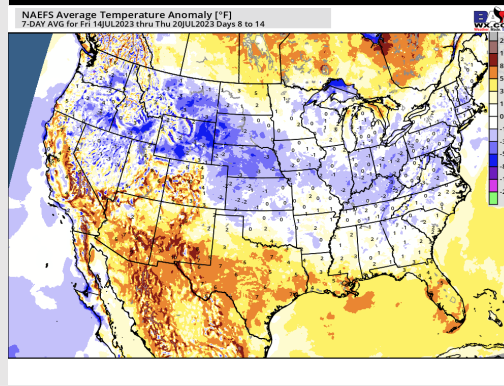


# Houston Pilots: 7/7/23

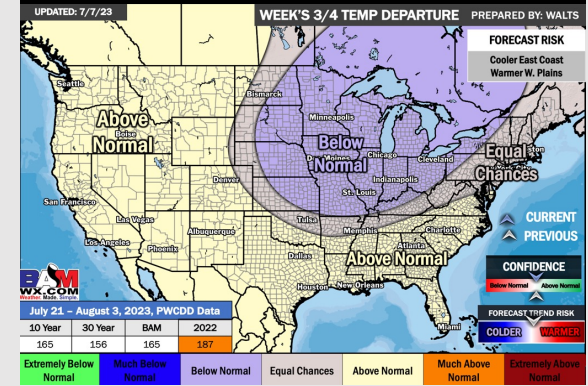
## Next 7 Day Temperature Departure



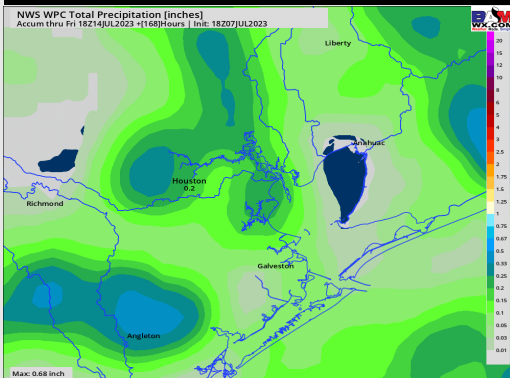
## 8-14 Day Temperature Departure



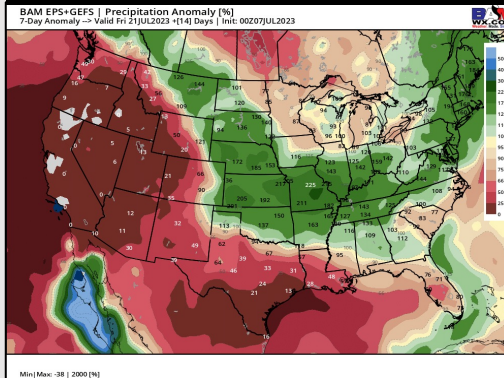
## 15-30 Day Temperature Departure



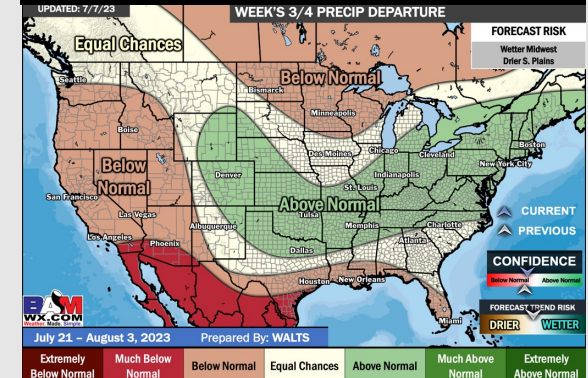
## Next 7 Day Total Precipitation



## 8-14 Day % of Average Precip.



## 15-30 Day % of Average Precip.



- Slightly above normal temperatures are favored over the next week. Below normal precipitation chances are favored for this week after today's rain, with some scattered rain chances present.
- Expecting below normal precipitation chances and slightly above normal temperatures for the week 2 timeframe.
- Above normal temperatures and below normal chances for precipitation are favored in the weeks ¾ timeframe.