

Houston Pilots Forecast Package

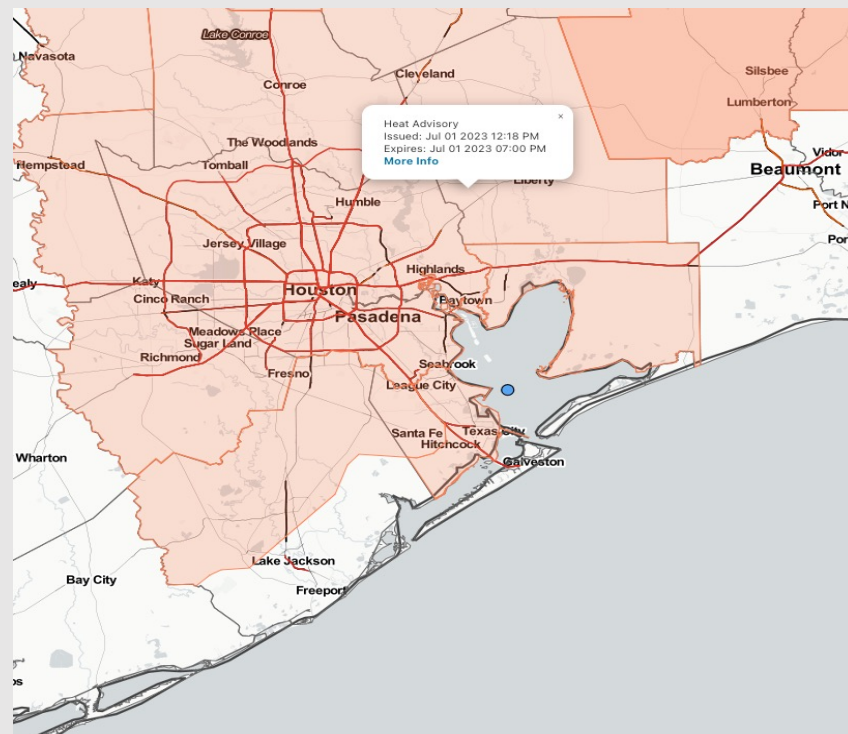


Updated: 3:10 PM CT
Saturday, July 1, 2023

Forecaster: Jonathan Kipper

Weather Headlines

- Anticipating mostly dry conditions over the next few days, with a few low-end, isolated chances for rain possible SUN/MON
- Excessive heat concerns (90+ F) to continue throughout at least next week.
- No active tropical threats to SE TX at this time.
- No signals for fog impacting stations moving forward.
- Precip pattern continues to be less active this weekend with low-end rain chances.



Radar/NWS Alerts: 3:10 PM CT



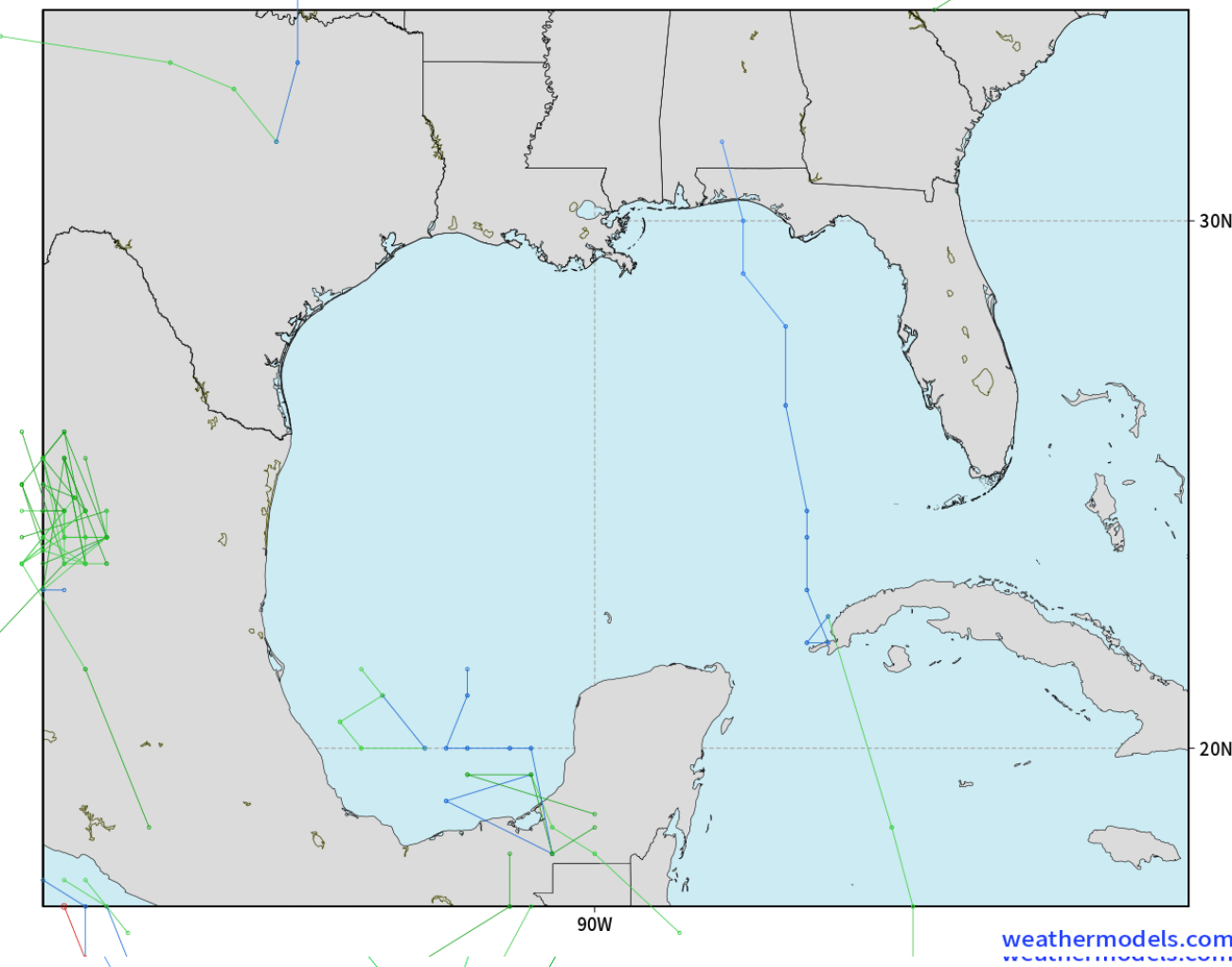
As always, please do not hesitate to reach out to us with any forecast questions via the chat option on the Weather Porthole or our on-call number, **(317)-560-8122** press 1 for forecast questions.

Houston Pilots Tropical Update

American Model Low Pressure Tracks Next 10-Days

NOAA GEFSv12 | All Ensemble Cyclones +240 Hours
INIT: 06Z01JUL2023 --> UNTIL 06Z11JUL2023

o-o > 1010 hPa
o-o 1000 - 1010 hPa
o-o 980 - 999 hPa
o-o 960 - 979 hPa
o-o 950 - 959 hPa
o-o < 950 hPa



No tropical activity
anticipated over the
next 10 days for SE TX.

No other areas of
interest being noted
across the
Atlantic/Gulf.

Houston Pilots Visibility Chart (miles)



Time	Sat 1pm	Sat 2pm	Sat 3pm	Sat 4pm	Sat 5pm	Sat 6pm	Sat 7pm	Sat 8pm	Sat 9pm	Sat 10pm	Sat 11pm	Sun 12am	Sun 1am	Sun 2am	Sun 3am	Sun 4am	Sun 5am	Sun 6am	Sun 7am	Sun 8am	Sun 9am	Sun 10am	Sun 11am	Sun 12pm	Sun 1pm	Sun 2pm	Sun 3pm	Sun 4pm	Sun 5pm	Sun 6pm	Sun 7pm	Sun 8pm
610 Bridge	10	10	10	10	10	10	10	10	10	10	10	10	10	10	10	10	10	10	10	10	10	10	10	10	10	10	10	10	10	10	10	
Kinder 1	10	10	10	10	10	10	10	10	10	10	10	10	10	10	10	10	10	10	10	10	10	10	10	10	10	10	10	10	10	10	10	
Greens Bayou	10	10	10	10	10	10	10	10	10	10	10	10	10	10	10	10	10	10	10	10	10	10	10	10	10	10	10	10	10	10	10	
Shell Crude	10	10	10	10	10	10	10	10	10	10	10	10	10	10	10	10	10	10	10	10	10	10	10	10	10	10	10	10	10	10	10	
Lynchburg Ferries	10	10	10	10	10	10	10	10	10	10	10	10	10	10	10	10	10	10	10	10	10	10	10	10	10	10	10	10	10	10	10	
Exxon 3	10	10	10	10	10	10	10	10	10	10	10	10	10	10	10	10	10	10	10	10	10	10	10	10	10	10	10	10	10	10	10	
Morgans Point	10	10	10	10	10	10	10	10	10	10	10	10	10	10	10	10	10	10	10	10	10	10	10	10	10	10	10	10	10	10	10	
75/76	10	10	10	10	10	10	10	10	10	10	10	10	10	10	10	10	10	10	10	10	10	10	10	10	10	10	10	10	10	10	10	
63/64	10	10	10	10	10	10	10	10	10	10	10	10	10	10	10	10	10	10	10	10	10	10	10	10	10	10	10	10	10	10	10	
51/52	10	10	10	10	10	10	10	10	10	10	10	10	10	10	10	10	10	10	10	10	10	10	10	10	10	10	10	10	10	10	10	
37/38	10	10	10	10	10	10	10	10	10	10	10	10	10	10	10	10	10	10	10	10	10	10	10	10	10	10	10	10	10	10	10	
25/26	10	10	10	10	10	10	10	10	10	10	10	10	10	10	10	10	10	10	10	10	10	10	10	10	10	10	10	10	10	10	10	
11/12	10	10	10	10	10	10	10	10	10	10	10	10	10	10	10	10	10	10	10	10	10	10	10	10	10	10	10	10	10	10	10	
1 & 2 Bravo	10	10	10	10	10	10	10	10	10	10	10	10	10	10	10	10	10	10	10	10	10	10	10	10	10	10	10	10	10	10	10	

NOTE: This is automated data that may/may not agree with the official BAM thinking that’s found on the daily slides or special visibility report slides. This data should be used as a guide only

Houston Pilots Wind Chart



Example

Sustained wind 13 Knots
Gusts 18 Knots
Wind from the N

WS: 13
G:18
N

Time Knots	Sat 1pm	Sat 2pm	Sat 3pm	Sat 4pm	Sat 5pm	Sat 6pm	Sat 7pm	Sat 8pm	Sat 9pm	Sat 10pm	Sat 11pm	Sun 12am	Sun 1am	Sun 2am	Sun 3am	Sun 4am	Sun 5am	Sun 6am	Sun 7am	Sun 8am	Sun 9am	Sun 10am	Sun 11am	Sun 12pm	Sun 1pm	Sun 2pm	Sun 3pm	Sun 4pm	Sun 5pm	Sun 6pm	Sun 7pm	Sun 8pm
610 Bridge	6	6	7	7	8	8	9	8	8	7	6	6	6	5	5	4	3	2	3	4	4	4	4	3	4	5	6	7	8	8	8	
	9	9	10	10	10	10	10	10	11	11	11	9	9	9	9	7	6	5	4	5	6	7	6	5	7	8	9	10	11	11	10	
	SSE	SSE	SSE	SSE	SSE	SSE	SSE	SSE	SSE	SSE	SSE	S	S	S	S	S	SSW	SW	SW	SW	WSW	SW	SW	SW	S	SE	SE	SE	SSE	SSE	SSE	
Kinder 1	6	7	7	7	8	9	9	8	8	8	7	6	6	5	5	4	3	3	3	4	4	4	4	3	5	5	6	7	9	9	8	
	9	9	10	10	10	11	10	10	11	11	11	9	9	8	7	7	6	5	4	5	6	7	6	6	5	7	8	9	10	11	10	
	SSE	SSE	SE	SE	SSE	SSE	SSE	SSE	SSE	SSE	SSE	S	S	S	S	S	SSW	SW	SW	WSW	SW	SW	SW	SSE	SE	SE	SE	SSE	SSE	SSE	SSE	
Greens Bayou	6	7	7	8	8	9	9	8	8	7	7	6	6	5	5	5	4	3	3	4	4	4	4	3	5	6	7	8	9	9	8	
	9	9	10	11	11	11	10	10	11	11	10	9	9	8	7	7	6	5	5	6	6	7	6	6	5	7	9	9	10	11	10	
	SSE	SSE	SE	SE	SE	SSE	SSE	SSE	SSE	SSE	SSE	S	S	S	S	S	SSW	SW	SW	SW	WSW	SW	SW	SSW	SSE	SE	SE	SE	SSE	SSE	SSE	
Shell Crude	7	8	8	8	9	9	9	8	8	7	7	6	6	5	5	5	4	3	3	4	4	4	4	4	5	6	7	8	9	9	8	
	9	10	10	11	11	11	11	11	11	11	10	9	9	8	8	7	6	5	6	6	7	6	6	6	7	9	9	10	11	12	11	
	SSE	SE	SE	SE	SE	SE	SE	SSE	SSE	SSE	SSE	S	S	S	S	S	SSW	SW	SW	SW	WSW	SW	SW	SSW	SSE	SE	SE	SE	SSE	SSE	SSE	
Lynchburg Ferries	7	8	9	9	10	10	10	9	8	8	7	7	7	6	5	5	4	4	4	4	5	4	4	4	5	7	8	9	10	10	9	
	9	10	11	11	12	12	12	12	12	11	11	10	10	9	8	8	6	5	5	6	6	7	6	6	6	7	9	10	11	12	11	
	SSE	SSE	SSE	SSE	SSE	SSE	SSE	SSE	SSE	SSE	SSE	S	S	S	S	S	SSW	SW	SW	SW	SW	SW	SW	SSW	SSE	SE	SE	SSE	SSE	SSE	SSE	
Exxon 3	8	8	9	10	10	10	10	9	9	9	8	7	7	7	6	6	5	5	4	4	4	5	4	4	6	8	9	10	11	10	9	
	9	10	11	12	12	12	13	12	12	11	11	10	10	9	8	7	6	6	6	6	6	7	6	6	6	8	9	11	12	13	12	
	SSE	SSE	SSE	SSE	SSE	SSE	SSE	SSE	SSE	SSE	SSE	S	S	S	S	S	SSW	SW	SW	SW	SW	SW	SSW	S	SSE	SSE	SSE	SSE	SSE	SSE	SSE	
Morgans Point	8	9	10	11	11	11	12	11	10	10	9	9	9	9	8	8	7	6	5	5	5	4	5	6	7	9	10	11	12	12	11	
	10	11	12	13	13	13	14	13	13	12	11	11	11	11	10	10	8	7	7	7	7	7	6	6	7	9	10	12	13	14	13	
	SSE	SSE	SSE	SSE	SSE	SSE	SSE	SSE	SSE	SSE	SSE	S	S	S	S	S	SSW	SSW	SW	SW	SW	SW	S	SSE	SSE	SSE	SSE	SSE	SSE	SSE	SSE	
75/76	9	10	11	12	13	13	13	13	13	12	12	11	11	11	10	10	9	8	7	7	6	5	5	5	6	8	10	11	13	14	14	14
	11	12	13	13	14	15	15	14	14	13	13	12	13	12	12	11	10	9	8	8	7	7	7	7	8	10	11	13	14	15	15	15
	SE	SE	SSE	SSE	SSE	SSE	SSE	SSE	SSE	SSE	SSE	S	S	S	S	S	SSW	SSW	SW	SW	SW	SW	SSE	SE	SE	SE	SSE	SSE	SSE	SSE	SSE	
63/64	8	10	11	11	12	13	13	12	12	12	11	11	11	11	10	9	8	8	7	6	5	5	5	6	8	10	11	12	14	14	14	14
	10	11	12	12	13	14	14	14	13	13	12	12	13	12	12	12	10	9	8	8	7	6	7	7	8	10	11	12	14	15	15	15
	SE	SSE	SSE	SSE	SSE	SSE	SSE	SSE	SSE	SSE	SSE	S	S	S	S	S	S	SSW	SSW	SW	SW	SW	SE	SE	SE	SE	SSE	SSE	SSE	SSE	SSE	
51/52	7	9	9	10	10	11	12	11	10	10	11	11	11	10	10	10	9	8	8	7	6	5	5	5	6	7	9	10	11	13	13	12
	9	10	11	11	12	12	13	12	11	12	12	12	12	11	11	10	9	8	9	8	7	6	6	6	8	9	10	12	13	14	14	14
	SSE	SSE	SSE	SSE	SSE	SSE	SSE	SSE	SSE	SSE	SSE	SSE	S	S	S	S	S	SSW	SSW	SW	SW	SW	SSE	SE	SE	SE	SSE	SSE	SSE	SSE	SSE	
37/38	7	8	8	9	9	10	10	10	9	9	10	10	10	10	9	10	9	8	8	7	7	5	6	5	6	7	8	9	10	11	11	11
	9	9	9	10	10	11	11	11	10	10	11	11	11	10	11	11	10	9	8	8	7	6	7	7	8	9	10	11	12	12	12	12
	SSE	SSE	SSE	SSE	SSE	SSE	SSE	SSE	SSE	SSE	SSE	SSE	S	S	S	S	S	S	SSW	SSW	SW	SW	S	SSE	SSE	SSE	SSE	SSE	SSE	SSE	SSE	SSE
25/26	7	7	8	8	8	8	9	8	7	8	8	9	9	9	8	8	8	7	7	7	6	6	6	6	7	8	9	9	9	9	9	9
	8	8	8	9	9	9	10	9	9	9	10	11	11	10	10	10	9	8	8	8	7	7	7	7	8	9	10	10	10	11	10	10
	SSE	SSE	SSE	SSE	SSE	SSE	SSE	SSE	SSE	SSE	SSE	SSE	SSE	S	S	S	S	S	SSW	SSW	SSW	SSW	S	SSE	SSE	SSE	SSE	SSE	SSE	SSE	SSE	SSE
11/12	6	6	7	8	8	8	8	8	7	8	8	9	9	9	9	9	8	7	7	7	7	6	6	6	7	8	8	9	9	9	9	9
	7	7	8	8	9	9	9	9	9	9	10	11	11	10	10	10	9	8	8	8	7	7	6	7	8	9	10	10	10	10	10	10
	SSE	SSE	SSE	SSE	SSE	SSE	SSE	SSE	SSE	SSE	SSE	SSE	SSE	S	S	S	S	S	SSW	SSW	SSW	SSW	S	S	SSE	SSE	SSE	SSE	SSE	SSE	SSE	SSE
1 & 2 Bravo	4	4	5	6	7	8	9	9	9	9	10	10	11	11	10	10	9	9	8	8	8	7	6	5	5	5	7	8	9	9	9	10
	6	6	6	7	8	9	9	10	10	10	11	11	11	11	11	11	10	10	9	9	9	8	7	6	6	6	8	9	9	10	11	11
	SE	SE	SE	SSE	SSE	SSE	SSE	SSE	SSE	SSE	SSE	SSE	SSE	SSE	S	S	S	S	S	SSW	SSW	SSW	SSW	S	SSE	SSE	SSE	SSE	SSE	SSE	SSE	SSE

NOTE: This is automated data that may/may not agree with the official BAM thinking that's found on the daily slides.
This data should be used as a guide only

Houston Pilots: sat. 7/1/2023

Forecast Discussion

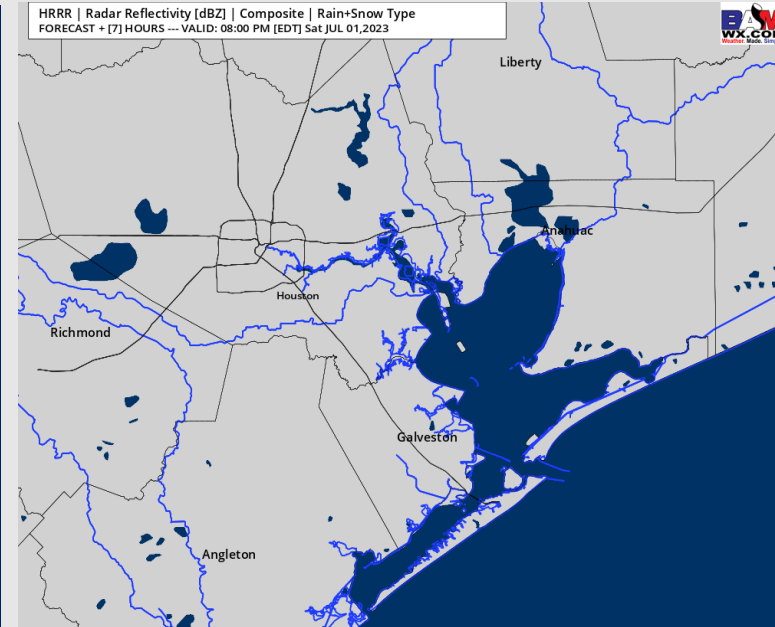
Precip: Dry conditions anticipated throughout the rest of the day today.

Wind: Winds will be out of the S/SE for the remainder of the day. Winds N of Morgan's Point will be at 7 – 12 kts with winds S of Morgan's Point will be at 10 – 15 kts for the rest of the day. **Wind gusts of 15 – 20 kts will be possible for Stations N of Morgan's Point after 4 PM**

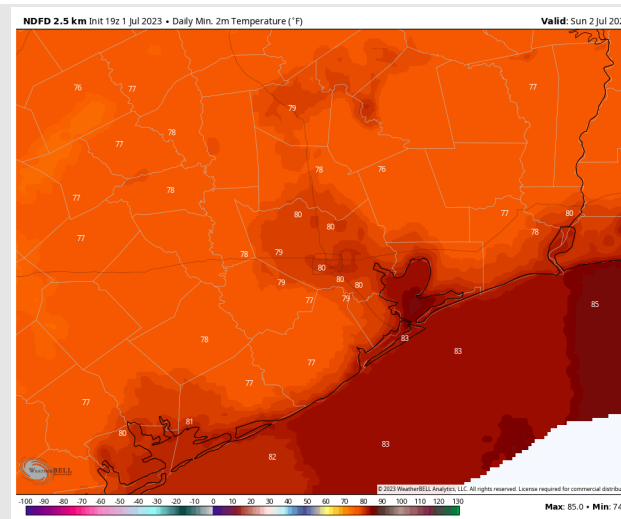
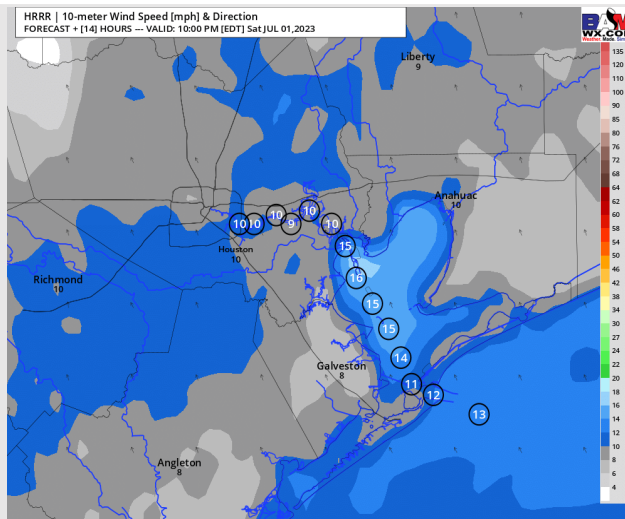
Temps: Low temperatures on Sunday will be in the low 80's F for stations S of Morgan's point and high 70's/near 80 F for stations N of Morgan's Point.

Visibility: Not anticipating any visibility concerns at this time.

Precip Image: 7 PM CT



**Wind Speed:
9 PM CT**



**Low Temps
Sunday**

Houston Pilots: Sun. 7/2/2023

Forecast Discussion

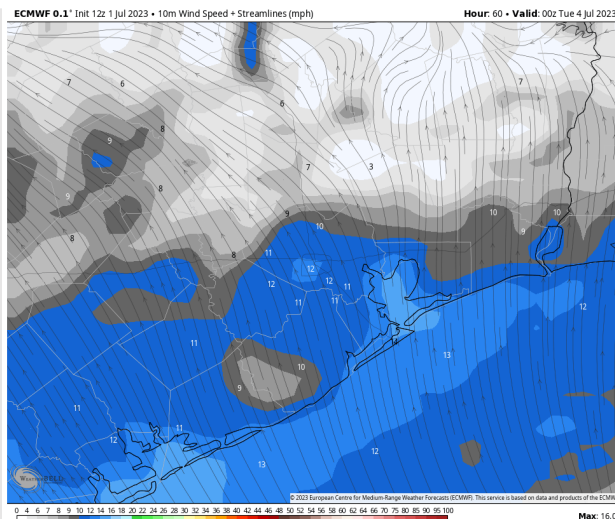
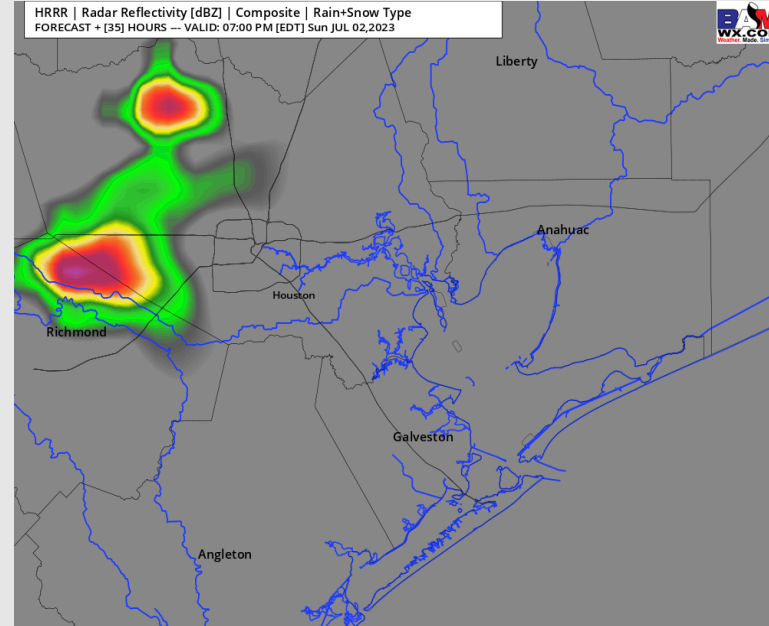
Precip: Favoring mostly dry conditions for Sunday outside of a 10-20% chance of an isolated shower/storm between 11 AM – 7 PM. Better coverage for rain will lie to the west and north.

Wind: Winds out of the S/SW throughout the day Sunday. Winds will be at 2 – 7 kts for Stations N of Morgan's Point through 3 PM. After 3 PM, winds N of Morgan's Point will pick up to 7-12 kts for the rest of the day. Winds S of Morgan's Point will be at 7 – 12 kts during the early morning hours, before calming to 2 – 7 kts between 10 AM – 3 PM. After 3 PM, winds S of Morgan's Point will pick back up to 12-17 kts for the rest of the day. **Wind gusts of 15-20 kts will be possible after 3 PM for all stations.**

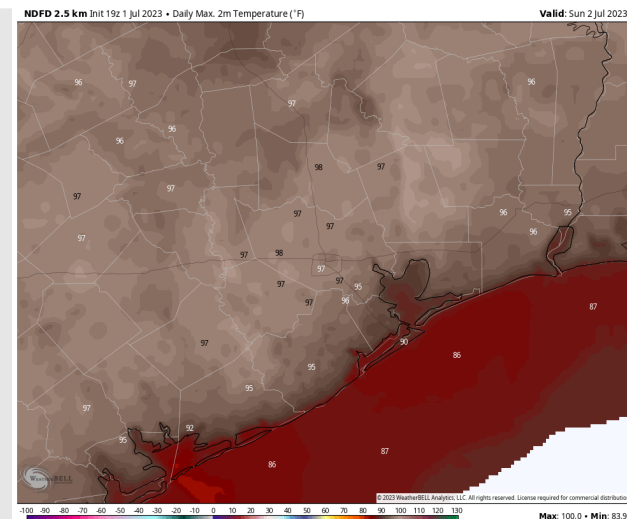
Temps: High temps on Sunday will be in the mid 80s F at the Boarding Station, low/mid 90s F for other Stations S of Morgan's Point and mid/upper 90s F N of Morgan's Point.

Visibility: Not anticipating any visibility concerns at this time.

Precip Image: 6 PM CT



Wind Speed:
7 PM CT



High Temps
Sunday

Houston Pilots: Mon. 7/3/2023

Forecast Discussion

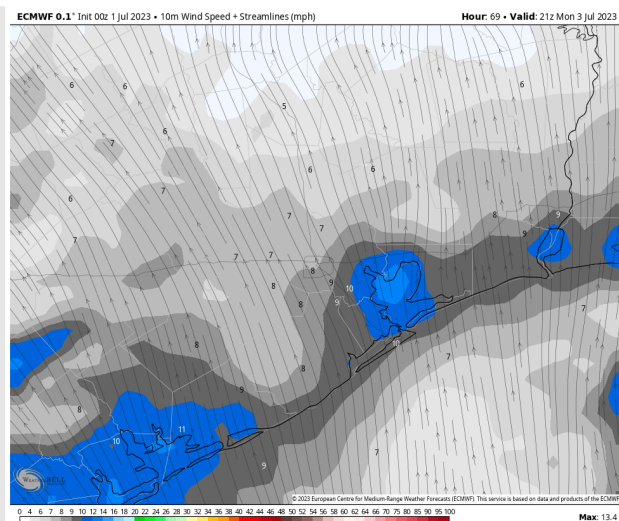
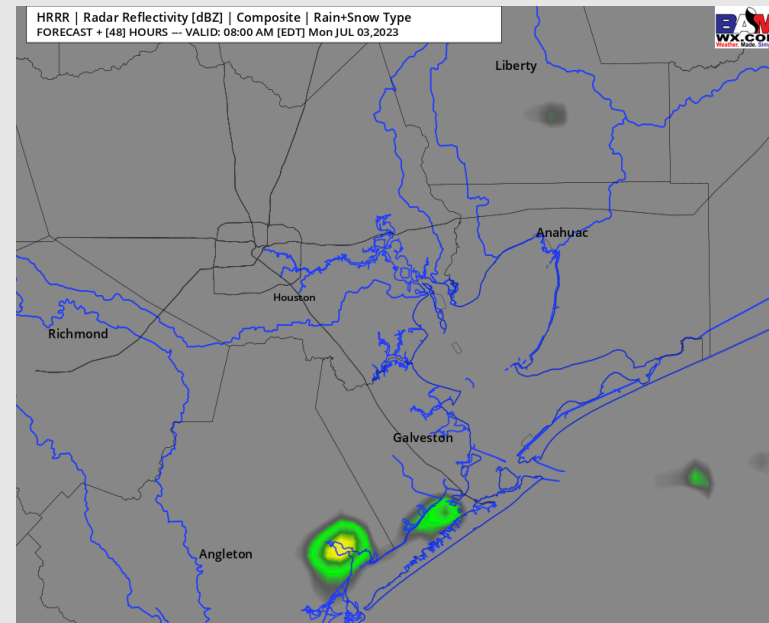
Precip: Favoring dry conditions for most of the day, however a low-end risk (10%) for a pop-up light shower or two will be possible between 7 – 10 AM, and again from 6 – 8 PM.

Wind: Winds will be out of the S/SW for the majority of the day on Monday before shifting to the S/SE by 7 PM. Winds N of Morgan's Point will be at 3 - 8 kts throughout the day outside of a slight increase of 7-12 kts from 5-10 PM. Stations S of Morgan's Point winds will see winds of 7 – 12 kts until 8 AM, at which time winds will decrease to 3 – 8 kts before returning to the 7 – 12 kt clip by 2 PM. **Gusts of 17-22 kts will be possible between 3-9 PM.**

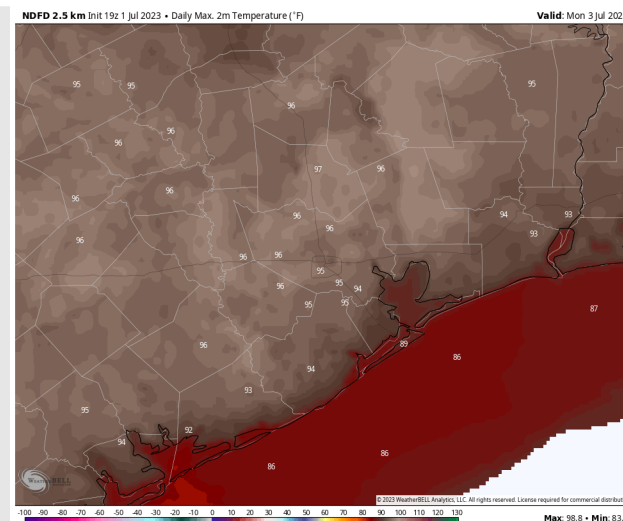
Temps: High temps on Monday will be in the mid 80s F at the Boarding Station, low/mid 90s F for other Stations S of Morgan's Point and mid 90s N of Morgan's Point.

Visibility: Not anticipating any visibility concerns at this time.

Precip Image: 7 AM CT



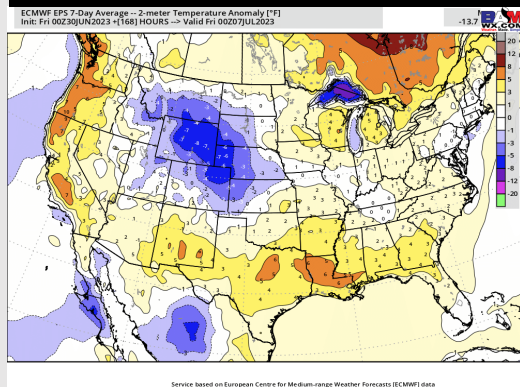
Wind Speed:
4 PM CT



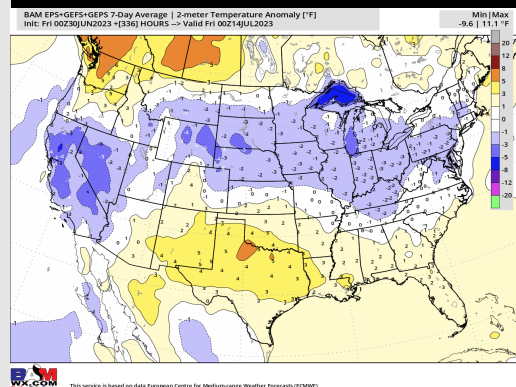
High Temps
Monday

Houston Pilots: 7/1/23

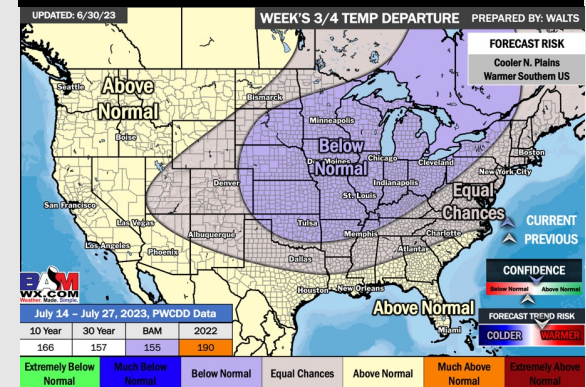
Next 7 Day Temperature Departure



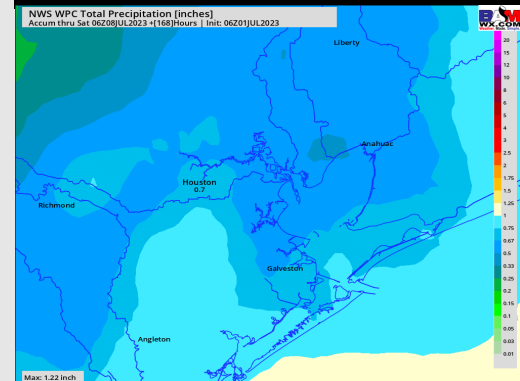
8-14 Day Temperature Departure



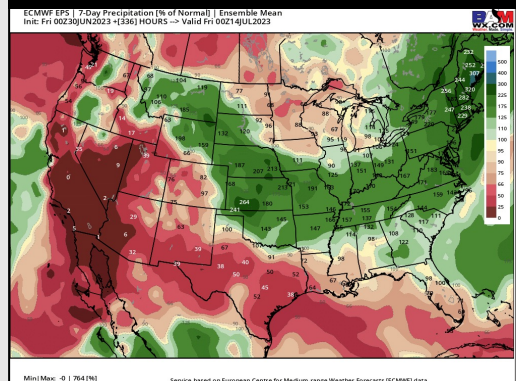
15-30 Day Temperature Departure



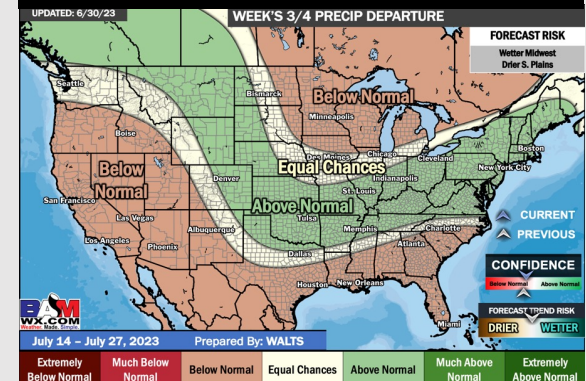
Next 7 Day Total Precipitation



8-14 Day % of Average Precip.



15-30 Day % of Average Precip.



- Slightly above normal temperatures are favored over the next week. Below normal precipitation chances are favored for the majority of the next week, with rain chances picking up in the day 6 – 7 time period.
- Expecting below normal precipitation chances and slightly above normal temperatures for the week 2 timeframe.
- Above normal temperatures and below normal chances for precipitation are favored in the weeks $\frac{3}{4}$ timeframe.