

Houston Pilots Forecast Package

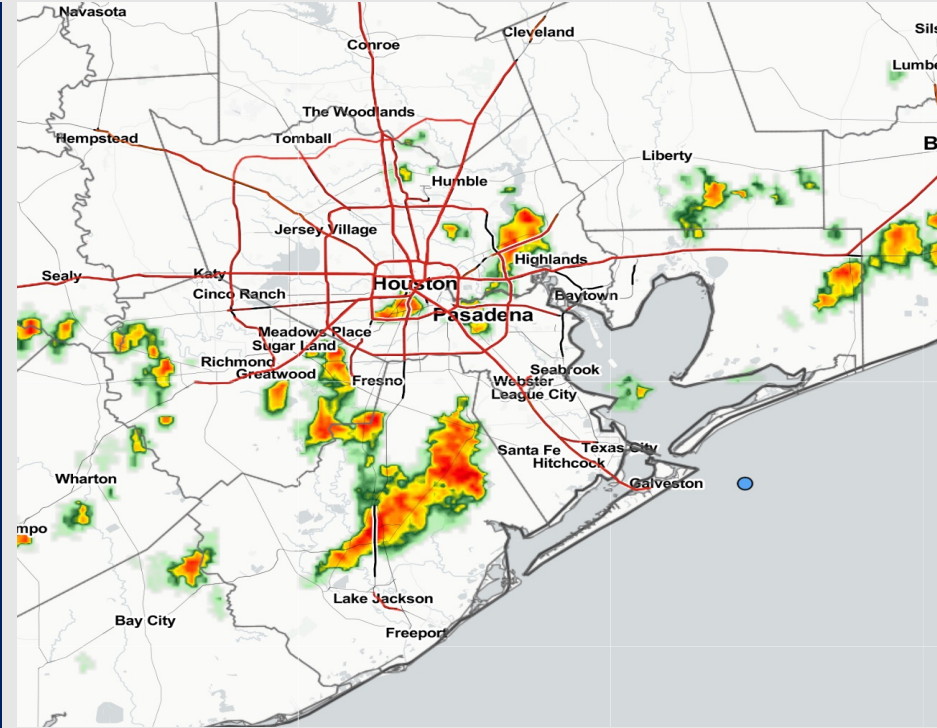


Updated: 2:05 PM CT
Saturday, July 8, 2023

Forecaster: Tyler Riggles

Weather Headlines

- Scattered hit/miss rain chances will still be present throughout the weekend, especially in the afternoon hours.
- Excessive heat concerns (90+ F) to continue throughout at least next week.
- No active tropical threats to SE TX at this time.
- No signals for fog impacting stations moving forward.



Radar/NWS Alerts: 2:05 PM CT



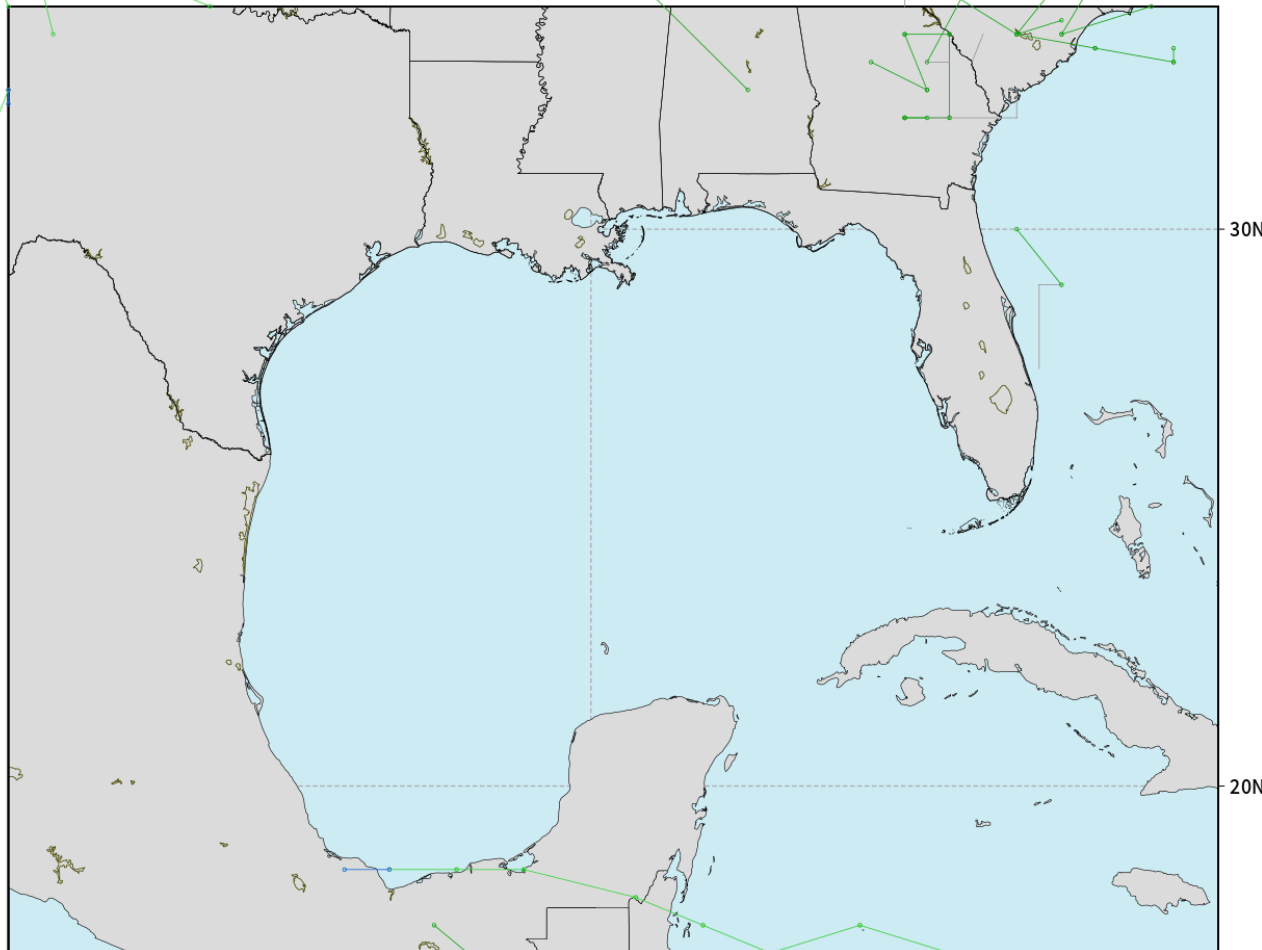
As always, please do not hesitate to reach out to us with any forecast questions via the chat option on the Weather Porthole or our on-call number, **(317)-560-8122** press 1 for forecast questions.

Houston Pilots Tropical Update

American Model Low Pressure Tracks Next 10-Days

NOAA GEFSv12 | All Ensemble Cyclones +240 Hours
INIT: 06Z08JUL2023 --> UNTIL 06Z18JUL2023

o-o > 1010 hPa
o-o 1000 - 1010 hPa
o-o 980 - 999 hPa
o-o 960 - 979 hPa
o-o 950 - 959 hPa
o-o < 950 hPa



weathermodels.com

No tropical activity anticipated over the next 10 days for SE TX.

No other areas of interest being noted across the Atlantic/Gulf.

Houston Pilots Visibility Chart (miles)



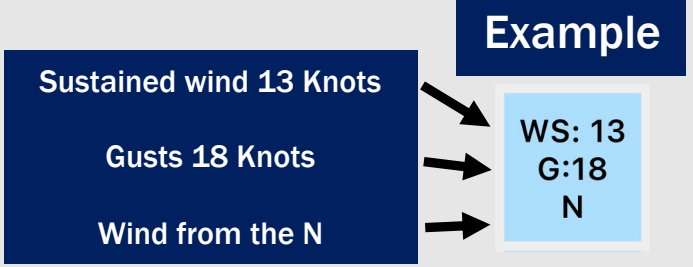
Forecast Confidence



Time	Sat 1pm	Sat 2pm	Sat 3pm	Sat 4pm	Sat 5pm	Sat 6pm	Sat 7pm	Sat 8pm	Sat 9pm	Sat 10pm	Sat 11pm	Sun 12am	Sun 1am	Sun 2am	Sun 3am	Sun 4am	Sun 5am	Sun 6am	Sun 7am	Sun 8am	Sun 9am	Sun 10am	Sun 11am	Sun 12pm	Sun 1pm	Sun 2pm	Sun 3pm	Sun 4pm	Sun 5pm	Sun 6pm	Sun 7pm	Sun 8pm	Sun 9pm	Sun 10pm	Sun 11pm	Mon 12am
610 Bridge	10	10	10	10	10	10	10	10	10	10	10	10	10	9	8	10	10	10	8	10	10	10	10	10	10	10	10	10	10	10	10	10	10	10	10	10
Kinder 1	10	10	10	10	10	10	10	10	10	10	10	10	10	9	8	10	10	10	8	10	10	10	10	10	10	10	10	10	10	10	10	10	10	10	10	10
Greens Bayou	10	10	10	10	10	10	10	10	10	10	10	10	10	9	8	10	10	10	8	10	10	10	10	10	10	10	10	10	10	10	10	10	10	10	10	10
Shell Crude	10	10	10	10	10	10	10	10	10	10	10	10	10	9	9	10	10	10	8	10	10	10	10	10	10	10	10	10	10	10	10	10	10	10	10	10
Lynchburg Ferries	10	10	10	10	10	10	10	10	10	10	10	10	10	9	9	10	10	10	8	10	10	10	10	10	10	10	10	10	10	10	10	10	10	10	10	10
Exxon 3	10	10	10	10	10	10	10	10	10	10	10	10	10	10	10	10	10	10	10	10	10	10	10	10	10	10	10	10	10	10	10	10	10	10	10	10
Morgans Point	10	10	10	10	10	10	10	10	10	10	10	10	10	10	10	10	10	10	10	10	10	10	10	10	10	10	10	10	10	10	10	10	10	10	10	10
75/76	10	10	10	10	10	10	10	10	10	10	10	10	10	10	10	10	10	10	10	10	10	10	10	10	10	10	10	10	10	10	10	10	10	10	10	10
63/64	10	10	10	10	10	10	10	10	10	10	10	10	10	10	10	10	10	10	10	10	10	10	10	10	10	10	10	10	10	10	10	10	10	10	10	10
51/52	10	10	10	10	10	10	10	10	10	10	10	10	10	10	10	10	10	10	10	10	10	10	10	10	10	10	10	10	10	10	10	10	10	10	10	10
37/38	10	10	10	10	10	10	10	10	10	10	10	10	10	10	10	10	10	10	10	10	10	10	10	10	10	10	10	10	10	10	10	10	10	10	10	10
25/26	10	10	10	10	10	10	10	10	10	10	10	10	10	10	10	10	10	10	10	10	10	10	10	10	10	10	10	10	10	10	10	10	10	10	10	10
11/12	10	10	10	10	10	10	10	10	10	10	10	10	10	10	10	10	10	10	10	10	10	10	10	10	10	10	10	10	10	10	10	10	10	10	10	10
1 & 2 Bravo	10	10	10	10	10	10	10	10	10	10	10	10	10	10	10	10	10	10	10	10	10	10	10	10	10	10	10	10	10	10	10	10	10	10	10	10

NOTE: This is automated data that may/may not agree with the official BAM thinking that's found on the daily slides or special visibility report slides. This data should be used as a guide only

Houston Pilots Wind Chart



Time Knots	Sat 1pm	Sat 2pm	Sat 3pm	Sat 4pm	Sat 5pm	Sat 6pm	Sat 7pm	Sat 8pm	Sat 9pm	Sat 10pm	Sat 11pm	Sun 12am	Sun 1am	Sun 2am	Sun 3am	Sun 4am	Sun 5am	Sun 6am	Sun 7am	Sun 8am	Sun 9am	Sun 10am	Sun 11am	Sun 12pm	Sun 1pm	Sun 2pm	Sun 3pm	Sun 4pm	Sun 5pm	Sun 6pm	Sun 7pm	Sun 8pm	Sun 9pm	Sun 10pm	Sun 11pm	Mon 12am		
610 Bridge	5	7	4	4	3	5	7	7	6	6	5	4	3	3	5	6	5	5	5	6	7	7	7	7	7	7	7	7	7	9	9	9	9	9	9	9	8	
	7	11	8	5	7	9	13	14	13	15	14	13	10	10	12	9	8	8	8	9	9	11	11	10	10	10	10	10	11	11	12	13	13	14	13	12		
	S	S	S	E	ESE	SSE	SSE	S	S	S	S	S	S	S	SSW	SSW	SSW	SSW	SSW	SSW	SSW	SSW	SW	SW	SW	SSW	SSW	S	S	S	S	S	S	S	S	S		
Kinder 1	5	7	4	3	3	6	7	7	5	6	5	4	3	3	4	6	5	5	5	6	7	7	7	7	7	7	7	8	9	9	9	9	9	9	9	8		
	7	12	8	5	7	9	12	14	13	15	14	13	10	10	11	9	8	8	8	9	9	11	11	10	10	10	10	10	11	11	12	13	13	14	13	12		
	S	SSW	SSE	E	ESE	SSE	SSE	S	SSE	S	S	S	S	S	SSW	SSW	SSW	SSW	SSW	SSW	SSW	SW	SW	SW	SSW	SSW	SSW	S	S	S	S	S	S	S	S	SSW	SSW	
Greens Bayou	5	8	4	3	3	6	7	7	5	6	5	3	3	3	4	6	5	5	5	6	6	7	7	7	7	7	7	7	8	9	9	9	9	9	9	8		
	7	12	8	5	8	10	12	14	13	15	14	12	9	9	11	9	8	8	8	9	9	11	11	10	10	10	10	10	10	11	11	12	13	13	14	13	12	
	S	SSW	ESE	ENE	SSE	SSE	SSE	SSE	SSE	S	S	S	S	S	SSW	SSW	SSW	SSW	SSW	SSW	SSW	SSW	SW	SW	SW	SW	SW	SW	S	S	S	S	S	S	S	S	SSW	SSW
Shell Crude	6	9	4	4	4	6	8	7	5	6	5	3	2	3	4	6	5	5	5	6	7	7	7	7	7	7	7	7	9	10	10	9	9	9	8	8		
	8	12	7	6	8	10	13	14	13	14	14	11	9	10	12	9	8	8	8	9	9	11	11	10	10	11	11	10	11	11	12	13	13	13	13	12	12	
	SSE	S	SE	ESE	SSE	SSE	SSE	S	SSE	S	S	S	S	S	SSW	SSW	SSW	SSW	SSW	SSW	SSW	SSW	SSW	SW	SW	SSW	SSW	S	S	S	S	S	S	S	S	S	SSW	SSW
Lynchburg Ferries	8	10	4	5	5	6	8	7	5	6	5	3	2	4	4	7	6	6	6	6	7	7	7	7	7	7	7	8	8	9	10	10	10	9	9	8		
	11	14	7	7	8	10	13	14	13	15	14	11	8	10	12	10	9	8	8	9	10	10	11	11	10	10	10	11	11	11	12	13	13	14	13	13	12	11
	SE	SSE	ESE	SE	S	SSE	SSE	S	S	S	S	S	S	S	SSW	SSW	SSW	SSW	SSW	SSW	SSW	SSW	SW	SW	SW	SSW	SSW	S	S	S	S	S	S	S	S	S	SSW	SSW
Exxon 3	9	9	5	6	7	7	9	8	6	6	5	4	3	4	5	8	7	6	6	7	7	8	8	8	7	7	8	9	9	10	11	11	10	10	9	9		
	12	14	8	8	10	11	14	14	13	14	14	12	10	12	14	10	9	9	9	9	10	10	11	11	10	10	11	11	11	12	13	14	15	14	14	13	12	12
	E	SSW	SE	SSE	SSE	SSE	SSE	S	S	S	S	S	S	S	SSW	SSW	SSW	SSW	SSW	SSW	SSW	SSW	SW	SW	SSW	SSW	SSW	S	SSE	SSE	S	S	S	S	S	S	SSW	SSW
Morgans Point	8	10	8	7	9	9	10	9	8	8	7	6	5	6	7	9	8	8	7	8	8	8	8	8	8	8	8	10	10	12	13	13	12	12	11	10	10	
	10	14	10	9	12	13	15	14	13	14	14	13	12	13	15	11	10	10	10	10	10	11	11	11	11	11	12	12	13	14	15	16	15	15	14	13	12	
	ESE	SSE	SSE	SSE	SSE	SSE	SSE	S	S	S	S	S	S	S	SSW	SSW	SSW	SSW	SSW	SSW	SSW	SSW	SSW	SSW	SSW	SSW	S	SSE	SSE	S	S	S	S	S	S	S	SSW	SSW
75/76	11	12	10	8	11	12	13	12	11	11	10	9	8	9	10	12	11	10	10	10	10	10	10	9	9	9	10	11	12	14	14	15	16	16	15	14	13	12
	12	14	11	9	13	14	15	15	14	15	15	14	13	14	15	13	12	12	11	11	11	11	12	11	12	13	14	14	16	17	17	17	17	17	16	14	14	14
	SSE	SSE	SSE	SSE	SSE	S	S	S	S	S	S	S	S	S	SSW	SSW	SSW	SSW	SSW	SSW	SSW	SSW	SSW	SSW	SSW	S	S	S	SSE	S	S	S	S	S	S	S	SSW	SSW
63/64	13	12	10	9	12	13	14	13	11	12	11	10	9	9	10	12	12	11	11	10	11	10	10	9	9	9	11	12	12	14	16	16	16	16	15	14	13	13
	14	13	11	10	13	14	16	15	14	15	15	15	13	14	15	13	13	13	12	12	12	12	11	12	12	12	14	14	16	17	18	17	16	15	14	14	14	
	SSE	SSE	S	SSE	S	S	S	S	S	S	S	S	S	S	SSW	SSW	SSW	SSW	SSW	SSW	SSW	SSW	SSW	SSW	SSW	S	S	S	S	S	S	S	S	S	S	S	SSW	SSW
51/52	13	12	10	9	12	13	13	12	12	12	11	11	9	10	10	12	11	11	11	10	11	10	10	10	11	11	12	13	15	15	16	15	14	13	13	13	13	
	15	13	12	10	13	14	15	15	13	14	15	14	13	14	15	13	13	12	12	12	11	12	11	12	13	13	15	15	16	17	17	16	15	15	14	14	14	
	S	SSE	S	S	S	S	S	S	S	S	S	S	S	S	SSW	SSW	SSW	SSW	SSW	SSW	SSW	SSW	SSW	SSW	SSW	SSW	S	S	S	S	S	S	S	S	S	S	SSW	SSW
37/38	12	11	10	9	11	12	13	13	12	11	11	11	9	10	10	11	11	11	11	10	11	10	10	11	11	12	11	12	13	14	14	14	13	12	12	12	12	
	13	12	11	10	12	14	15	15	14	14	15	14	13	13	15	13	12	12	12	12	12	12	12	13	14	14	14	15	16	16	15	14	13	13	13	14	14	
	SSE	S	S	S	S	S	S	S	S	S	S	S	S	S	SSW	SSW	SSW	SSW	SSW	SSW	SSW	SSW	SSW	SSW	SSW	SSW	SSW	SSW	SSW	SSW	SSW	SSW	SSW	SSW	SSW	SSW	SSW	SSW
25/26	11	9	9	9	11	11	12	11	10	10	9	9	8	9	9	10	10	10	10	10	9	10	10	10	10	11	11	12	12	12	12	12	12	12	11	10	11	11
	12	11	10	10	12	13	14	14	13	14	14	13	12	13	14	12	12	12	11	11	12	12	13	13	13	14	14	14	14	14	14	14	14	12	12	12	13	
	SSE	S	S	S	S	S	S	S	S	S	S	S	S	S	SSW	SSW	SSW	SSW	SSW	SSW	SSW	SSW	SSW	SSW	SSW	SSW	SSW	SSW	SSW	SSW	SSW	SSW	SSW	SSW	SSW	SSW	SSW	SSW
11/12	10	9	8	9	10	11	12	11	10	10	10	9	8	9	10	10	10	10	10	10	10	10	10	10	10	11	11	11	11	11	12	12	11	10	11	11	11	
	12	11	9	11	12	13	14	13	14	13	13	12	13	12	13	14	12	12	12	12	12	12	12	12	13	13	13	13	14	14	14	13	12	12	12	12	13	
	SSE	S	S	S	S	S	S	S	S	S	S	S	S	S	SSW	SSW	SSW	SSW	SSW	SSW	SSW	SSW	SSW	SSW	SSW	SSW	SSW	SSW	SSW	SSW	SSW	SSW	SSW	SSW	SSW	SSW	SSW	SSW
1 & 2 Bravo	11	11	7	10	11	12	13	12	12	12	11	11	11	11	12	12	12	12	12	11	12	11	11	11	11	11	11	11	11	12	12	13	12	12	13	13	14	
	12	12	9	12	12	13	15	13	13	14	13	13	13	13	14	15	13	13	13	12	13	13	13	13	13	13	13	13	13	14	14	14	13	13	13	14	14	
	SSE	S	S	S	S	S	S	S	S	S	S	S	S	S	SSW	SSW	SSW	SSW	SSW	SSW	SSW	SSW	SSW	SSW	SSW	SSW	SSW	SSW	SSW	SSW	SSW	SSW	SSW	SSW	SSW	SSW	SSW	SSW

NOTE: This is automated data that may/may not agree with the official BAM thinking that's found on the daily slides. This data should be used as a guide only

Houston Pilots: Sat. 7/8/2023



Forecast Discussion

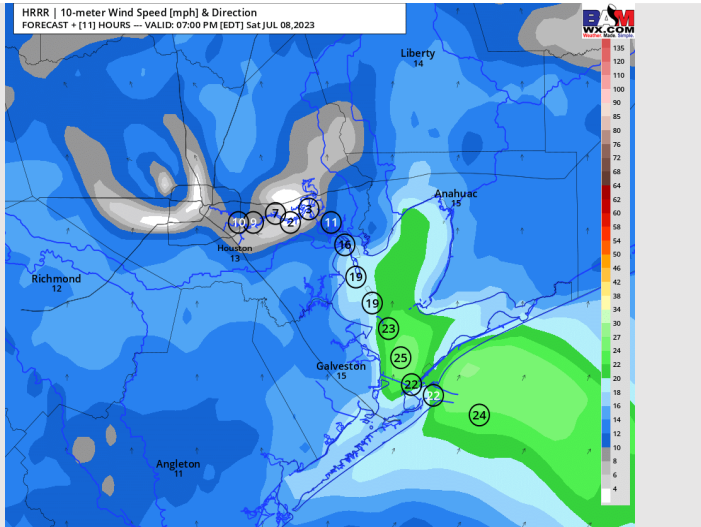
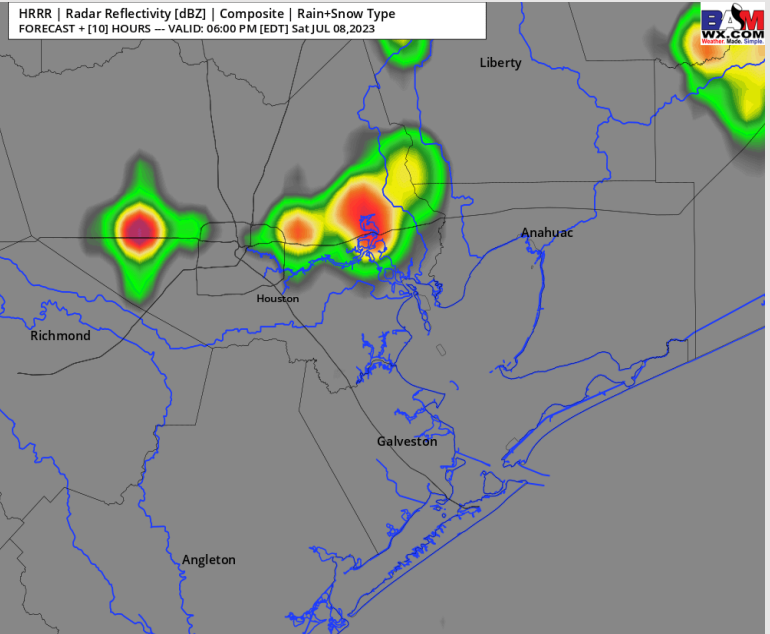
Precip: Favoring a 20-40% chance of a few hit/miss showers/storms for all stations except the Boarding Station until 7 PM. After 7 PM, favoring dry conditions for the rest of the day. **25-35 kt wind gusts, lightning and isolated hail will be risks with storms.**

Wind: Winds out of the S/SW will N of Morgan's Point will be 5-10 kts for the rest of the day. Winds S of Morgan's Point will be 10-15 kts until 5 PM. After 6 PM winds will have a brief increase to 17-22 kts until 8 PM, after which time winds will be 13-18 kts for the rest of the evening. **Wind gusts of 25-35 kts will be possible under the strongest cells today.**

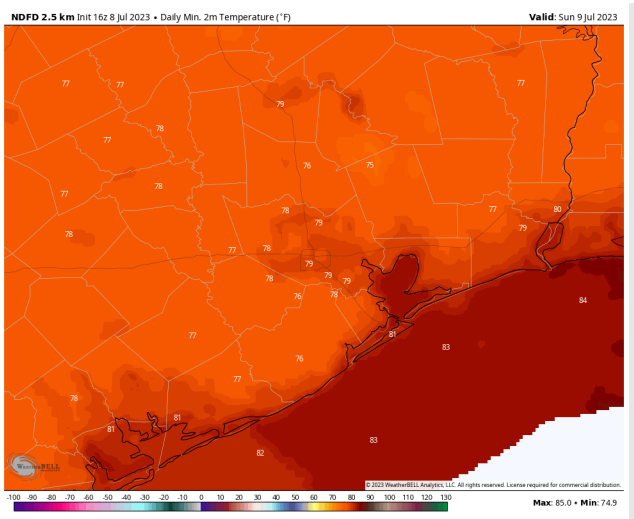
Temps: Low temps tonight will be in the low 80s F for Stations S of Morgan's Point and in the upper 70s F for Stations N of Morgan's Point.

Visibility: Not anticipating any visibility concerns at this time.

Precip Image: 5 PM CT



Wind Speed:
5 PM CT



Low Temps
Sun AM

Houston Pilots: Sun. 7/9/2023



Forecast Discussion

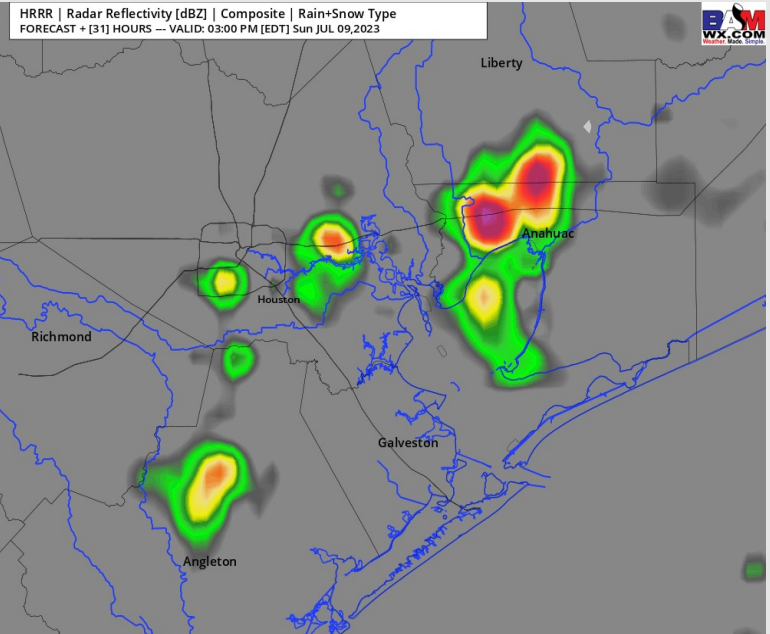
Precip: Anticipating dry conditions most of the day Sunday, aside for a 20-30% chance for scattered showers from 12-5 PM. An isolated storm or two cannot be ruled out between 2-4 PM.

Wind: Winds out of the S/SW will be 2 - 7 kts for most of the morning for stations N of Morgan's Point before gradually picking up to 5-10 kts around 10 AM. Winds S of Morgan's point will be 13-18 kts Sunday before picking up to 18-23 kts by 2 PM and remaining that way for the rest of the day. **Wind gusts of 20-25 kts will be possible for stations S of Morgan's Point after 3 AM. Then by 7 PM, wind gusts of 20-25 kts will be possible for all stations for the rest of the day Sunday.**

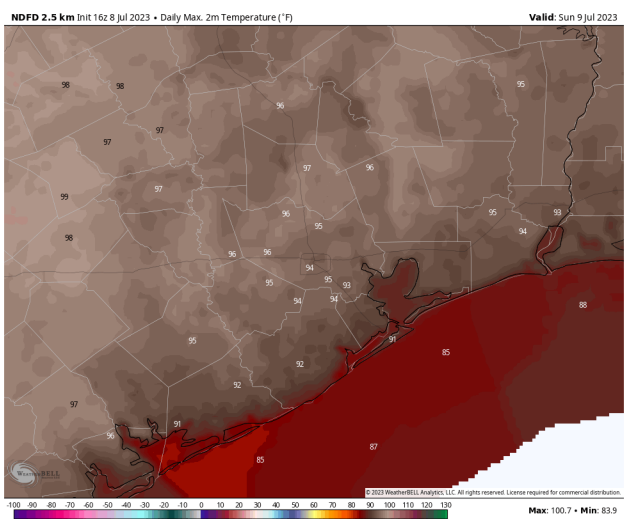
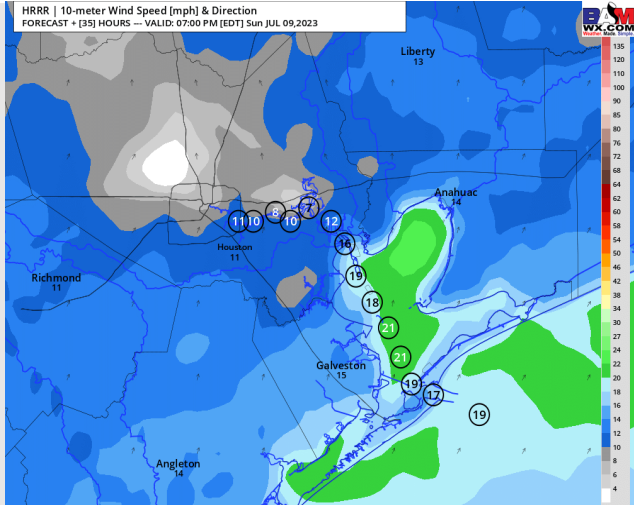
Temps: High temps Sunday will be in the mid/upper 80s F at the Boarding Station, low 90s F for all other Stations S of Morgan's Point and mid 90s F N of Morgan's Point.

Visibility: Not anticipating any visibility concerns at this time.

Precip Image: 2 PM CT



Wind Speed:
6 PM CT



High Temps
Sunday

Forecast Discussion

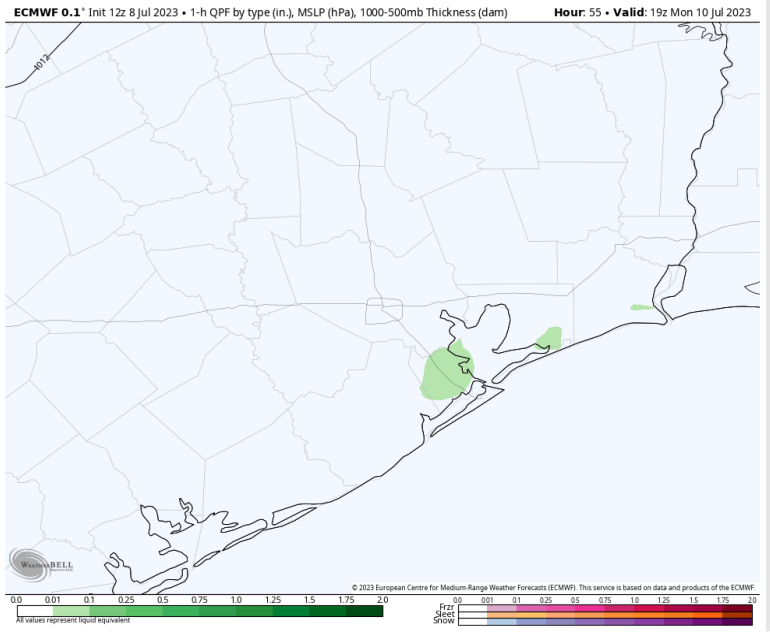
Precip: Favoring dry conditions for most of the day Monday, aside for a 10% chance for showers between 1-5 PM.

Wind: Winds out of the SE will be at 11- 16 kts for Stations S of Morgan’s Point throughout the day. Stations N of Morgan’s Point will see winds of 2-7 kts until 5 PM, at which point winds will increase to 5-10 kts for the rest of the evening.

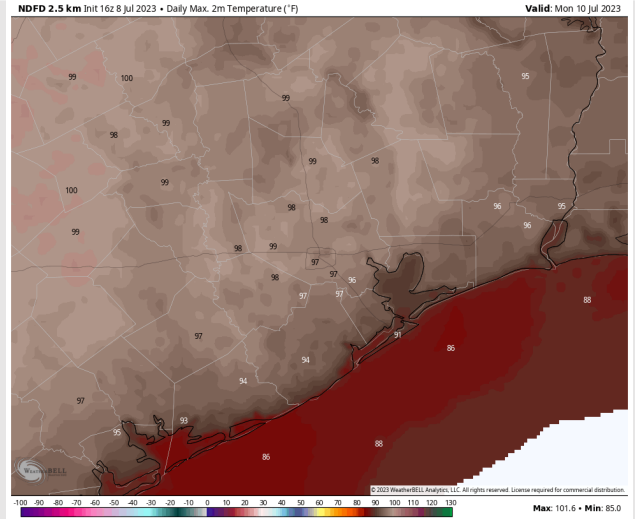
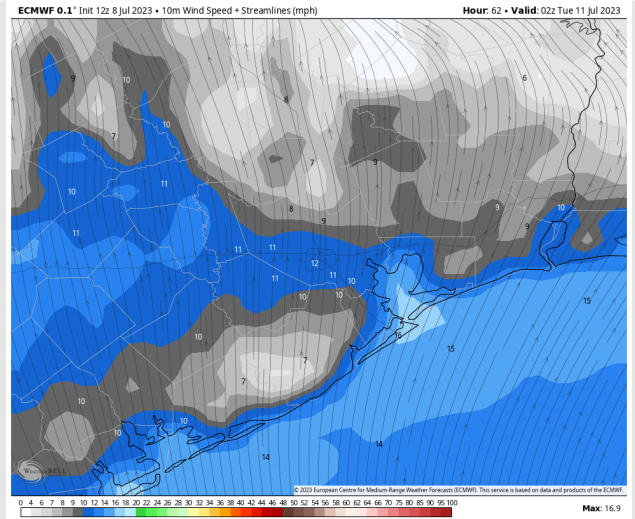
Temps: High temps on Monday will be in the mid/upper 80s F for the Boarding Station, low/mid 90s for all other stations S of Morgan’s Point and in the upper 90s near 100 F N of Morgan’s Point.

Visibility: Not anticipating any visibility concerns at this time.

Precip Image: 2 PM CT

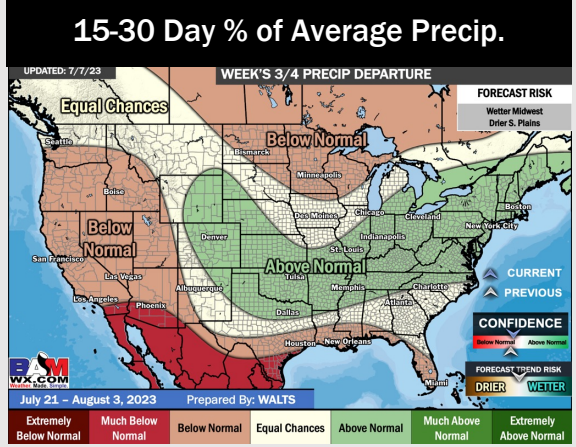
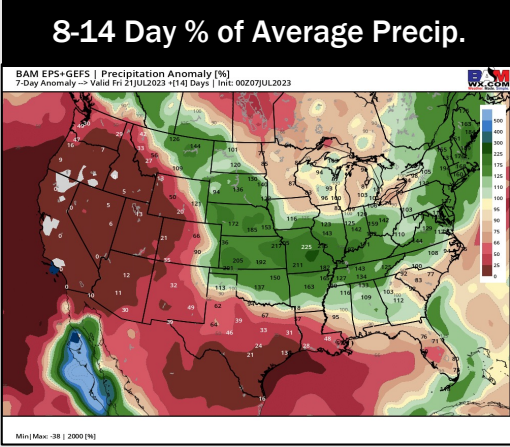
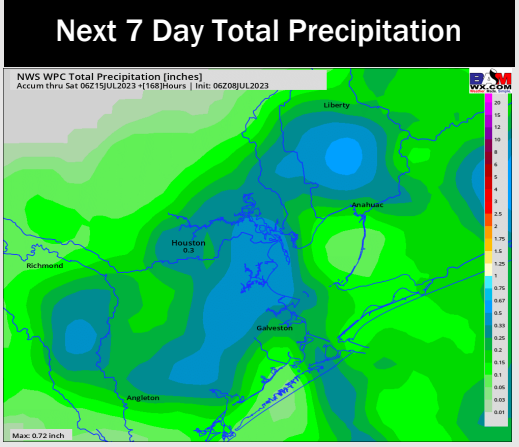
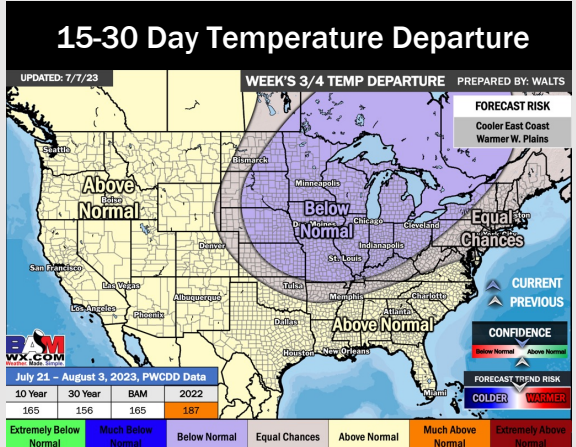
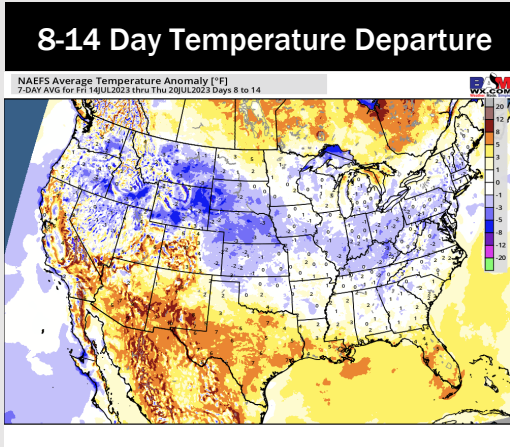
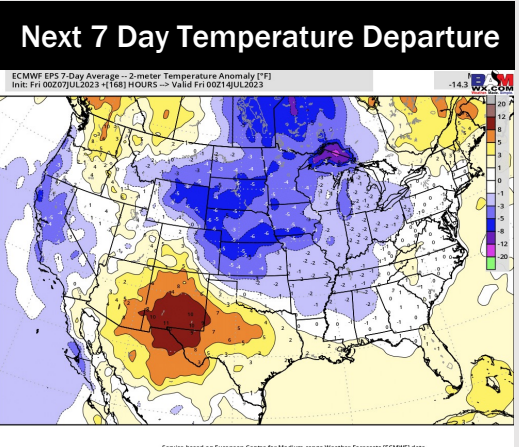


Wind Speed:
9 PM CT



High Temps
Monday

Houston Pilots: 7/8/23



- Slightly above normal temperatures are favored over the next week. Below normal precipitation chances are favored for this week after today's rain, with some scattered rain chances present.
- Expecting below normal precipitation chances and slightly above normal temperatures for the week 2 timeframe.
- Above normal temperatures and below normal chances for precipitation are favored in the weeks 3/4 timeframe.