

# Houston Pilots Forecast Package



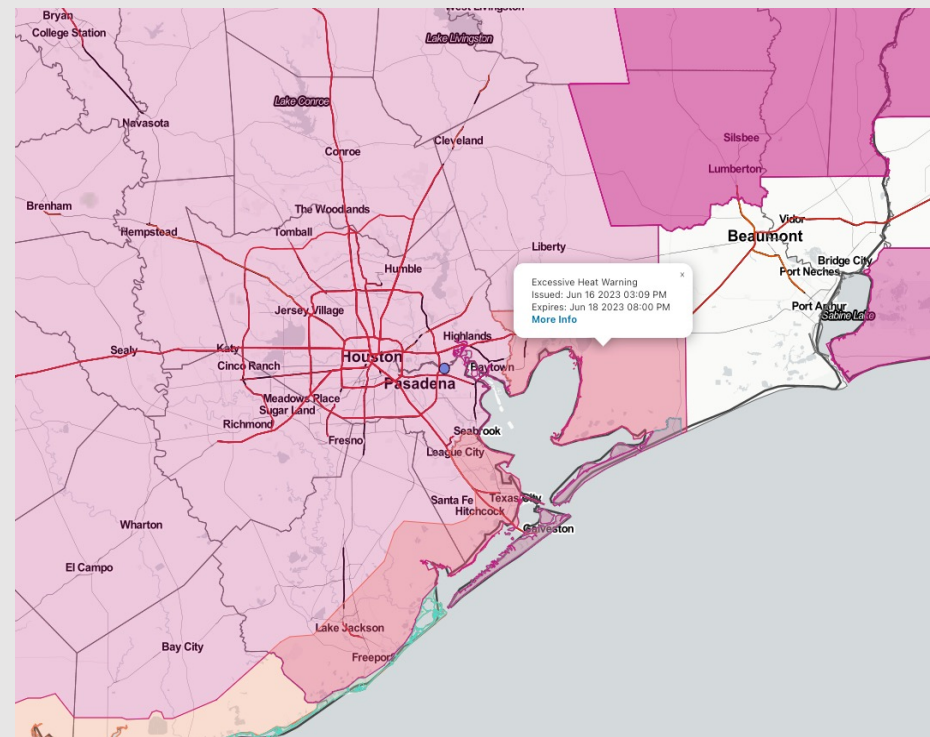
Updated: 2:15 PM CT

Saturday, June 17, 2023

Forecaster: Jonathan Kipper

## Weather Headlines

- Aside from a low end risk of isolated showers through early Sunday AM, dry conditions anticipated throughout the next few days.
- Winds are anticipated to be slightly elevated over the next few days, with gustier conditions on SUN. **More details on wind in the slides below.**
- Not anticipating any visibility concerns at this time.
- Excessive heat concerns (90+ F) to continue through Wednesday.



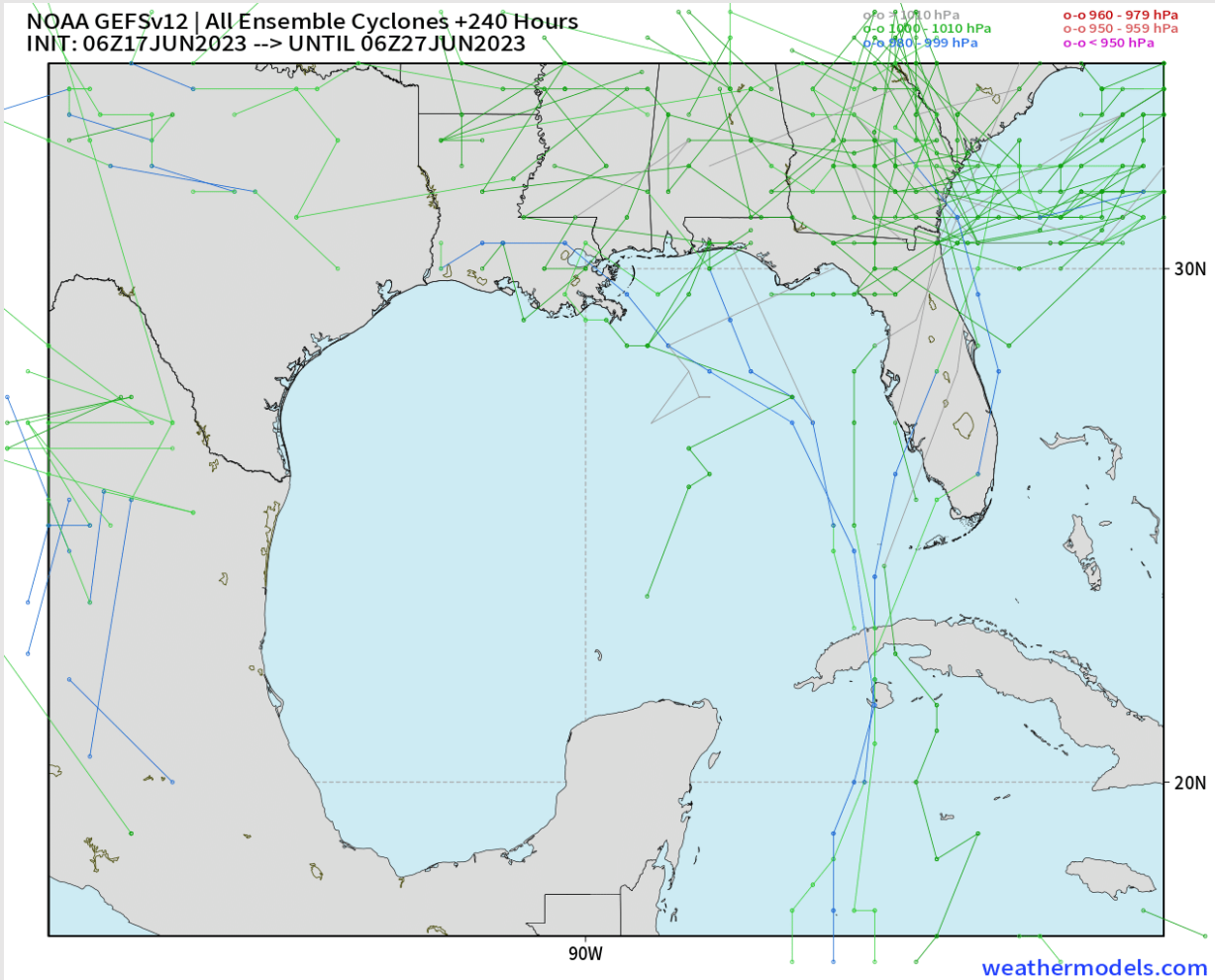
**Radar/NWS Alerts: 2:05 PM CT**



As always, please do not hesitate to reach out to us with any forecast questions via the chat option on the Weather Porthole or our on-call number, **(317)-560-8122** press 1 for forecast questions.

# Houston Pilots Tropical Update

## American Model Low Pressure Tracks Next 10-Day Tracks



**No tropical activity anticipated over the next 7-10 days.**

**Tropical activity West of Africa anticipated to remain in Atlantic Ocean.**

# Houston Pilots Visibility Chart (miles)



Time	Sat 12pm	Sat 1pm	Sat 2pm	Sat 3pm	Sat 4pm	Sat 5pm	Sat 6pm	Sat 7pm	Sat 8pm	Sat 9pm	Sat 10pm	Sat 11pm	Sun 12am	Sun 1am	Sun 2am	Sun 3am	Sun 4am	Sun 5am	Sun 6am	Sun 7am	Sun 8am	Sun 9am	Sun 10am	Sun 11am	Sun 12pm	Sun 1pm	Sun 2pm	Sun 3pm	Sun 4pm	Sun 5pm	Sun 6pm	Sun 7pm	Sun 8pm
610 Bridge	10	10	10	10	10	10	10	10	10	10	10	10	10	10	10	10	10	10	10	6	6	7	10	10	10	10	10	10	10	10	10	10	10
Kinder 1	10	10	10	10	10	10	10	10	10	10	10	10	10	10	10	10	10	10	10	7	7	8	10	10	10	10	10	10	10	10	10	10	9
Greens Bayou	10	10	10	10	10	10	10	10	10	10	10	10	10	10	10	10	10	10	10	8	7	9	10	10	10	10	10	10	10	10	10	10	9
Shell Crude	10	10	10	10	10	10	10	10	10	10	10	10	10	10	10	10	10	10	10	8	8	10	10	10	10	10	10	10	10	10	10	10	10
Lynchburg Ferries	10	10	10	10	10	10	10	10	10	10	10	10	10	10	10	10	10	10	10	8	8	10	10	10	10	10	10	10	10	10	10	10	10
Exxon 3	10	10	10	10	10	10	10	10	10	10	10	10	10	10	10	10	10	10	10	8	8	10	10	10	10	10	10	10	10	10	10	10	10
Morgans Point	10	10	10	10	10	10	10	10	10	10	10	10	10	10	10	10	10	10	10	8	8	10	10	10	10	10	10	10	10	10	10	10	10
75/76	10	10	10	10	10	10	10	10	10	10	10	10	10	10	10	10	10	10	10	8	8	10	10	10	10	10	10	10	10	10	10	10	10
63/64	10	10	10	10	10	10	10	10	10	10	10	10	10	10	10	10	10	10	10	8	8	10	10	10	10	10	10	10	10	10	10	10	10
51/52	10	10	10	10	10	10	10	10	10	10	10	10	10	10	10	10	10	9	9	8	9	10	10	10	10	10	10	10	10	10	10	10	10
37/38	10	10	10	10	9	10	10	9	9	10	10	10	10	10	10	10	10	8	10	10	10	10	10	10	10	10	10	10	10	10	10	10	10
25/26	10	10	9	9	9	7	9	8	7	10	10	10	10	10	10	10	8	8	10	10	10	10	10	10	10	10	10	10	10	10	10	10	10
11/12	10	9	9	7	7	7	9	6	6	9	10	10	9	10	10	10	8	8	10	10	10	10	10	10	10	10	10	10	10	10	10	10	10
1 & 2 Bravo	7	7	6	7	6	6	6	6	6	9	9	9	8	10	10	10	8	8	10	10	10	10	10	10	10	10	10	10	10	10	10	10	10

NOTE: This is automated data that may/may not agree with the official BAM thinking that's found on the daily slides or special visibility report slides. This data should be used as a guide only

# Houston Pilots Wind Chart



Sustained wind 13 Knots  
Gusts 18 Knots  
Wind from the N

**Example**

WS: 13  
G:18  
N

Time Knots	Sat 12pm	Sat 1pm	Sat 2pm	Sat 3pm	Sat 4pm	Sat 5pm	Sat 6pm	Sat 7pm	Sat 8pm	Sat 9pm	Sat 10pm	Sat 11pm	Sun 12am	Sun 1am	Sun 2am	Sun 3am	Sun 4am	Sun 5am	Sun 6am	Sun 7am	Sun 8am	Sun 9am	Sun 10am	Sun 11am	Sun 12pm	Sun 1pm	Sun 2pm	Sun 3pm	Sun 4pm	Sun 5pm	Sun 6pm	Sun 7pm	Sun 8pm
610 Bridge	5	5	6	6	6	7	8	8	8	8	7	6	6	6	6	6	7	7	8	8	10	10	10	11	11	11	11	11	11	11	11	10	9
	8	8	9	9	9	10	11	11	11	10	10	10	9	9	9	10	10	10	11	13	12	15	16	17	17	17	17	16	17	16	15	14	
	SW	SSW	SSW	SSW	S	S	S	S	S	S	S	SSW	SSW	SSW	SSW	SSW	SSW	SSW	SSW	SSW	SSW	SSW	SSW	SSW	SSW	SSW	SSW	SSW	SSW	SSW	SSW	SSW	
Kinder 1	5	5	6	6	6	8	9	8	8	8	7	6	6	6	6	6	7	7	8	8	10	10	10	11	11	11	11	11	11	11	11	11	9
	8	8	9	9	9	10	11	11	11	10	10	10	9	9	9	10	10	11	13	12	15	15	15	17	16	17	16	17	16	16	15	14	
	SW	SSW	SSW	SSW	S	S	S	S	S	S	S	SSW	SSW	SSW	SSW	SSW	SSW	SSW	SSW	SSW	SSW	SSW	SSW	SSW	SSW	SSW	SSW	SSW	SSW	SSW	SSW	SSW	
Greens Bayou	5	5	6	6	7	8	9	8	8	8	7	6	6	6	6	6	7	7	8	8	9	9	10	11	10	11	11	11	11	11	11	9	
	7	8	9	9	9	10	11	11	11	11	10	10	9	9	9	10	10	11	12	12	14	14	15	16	16	17	16	17	16	15	14		
	SW	SSW	SSW	S	SSE	SSE	S	S	S	S	S	SSW	SSW	SSW	SSW	SSW	SSW	SSW	SSW	SSW	SSW	SSW	SSW	SSW	SSW	SSW	SSW	SSW	SSW	SSW	SSW	S	
Shell Crude	6	6	6	7	7	8	9	9	8	8	7	7	6	6	6	6	7	7	8	8	9	9	10	10	10	10	11	11	11	11	12	12	10
	8	8	9	9	10	11	11	12	12	11	11	10	9	9	9	9	10	11	12	13	14	14	15	16	16	16	16	16	16	16	15	14	
	SSW	SSW	SSW	S	SSE	SSE	S	S	S	S	S	SSW	SSW	SSW	SSW	SSW	SSW	SSW	SSW	SSW	SSW	SSW	SSW	SSW	SSW	SSW	SSW	SSW	SSW	SSW	SSW	S	
Lynchburg Ferries	6	6	6	7	8	9	10	10	9	8	8	7	6	7	7	7	7	8	8	9	9	10	10	10	10	11	11	11	12	12	12	10	
	7	8	9	10	10	11	12	13	12	11	11	10	9	9	10	10	10	11	12	13	14	14	15	15	15	16	16	16	16	16	16	14	
	SSW	SSW	S	SSE	SSE	SSE	SSE	S	S	S	S	SSW	SSW	SSW	SSW	SSW	SSW	SSW	SSW	SSW	SSW	SSW	SSW	SSW	SSW	SSW	SSW	SSW	SSW	SSW	SSW	S	
Exxon 3	6	6	7	8	9	10	10	10	10	9	8	7	7	7	7	7	7	8	8	9	10	10	10	10	11	10	11	11	12	12	13	13	11
	7	8	9	10	11	12	13	13	13	12	11	10	9	9	9	10	10	11	12	13	14	14	15	15	15	16	17	17	17	16	16	14	
	SSW	SSW	S	SSE	SSE	SSE	S	S	S	S	S	SSW	SSW	SSW	SSW	SSW	SSW	SSW	SSW	SSW	SSW	SSW	SSW	SSW	SSW	SSW	SSW	SSW	SSW	SSW	SSW	S	
Morgans Point	6	7	8	10	10	11	12	12	11	11	10	8	8	8	8	8	9	10	10	10	11	11	11	11	11	11	11	12	13	13	14	14	13
	8	9	10	12	12	13	14	15	14	13	12	11	10	9	10	10	11	12	13	13	14	14	15	15	15	16	17	17	17	17	17	15	
	SSW	S	SSE	SSE	SSE	SSE	S	S	S	S	S	SSW	SSW	SW	SSW	SSW	SSW	SSW	SSW	SSW	SSW	SSW	SSW	SSW	SSW	SSW	SSW	SSW	SSW	SSW	SSW	S	
75/76	7	8	9	11	12	13	14	14	14	13	12	11	10	9	10	11	11	12	13	13	13	13	13	13	12	12	14	14	15	16	16	16	16
	9	9	11	13	13	15	15	16	16	15	13	12	11	10	11	12	13	14	15	15	15	15	15	15	16	17	17	18	18	18	18	17	
	S	SSE	SSE	SSE	SSE	S	S	S	S	S	S	SSW	SSW	SW	SSW	SSW	SSW	SSW	SSW	SSW	SSW	SSW	SSW	SSW	SSW	SSW	SSW	SSW	SSW	SSW	S	S	
63/64	7	8	10	12	12	13	14	15	14	14	12	11	10	9	10	12	12	13	14	14	14	14	14	14	14	13	15	16	16	16	17	17	16
	9	10	11	13	13	15	16	16	16	15	13	12	11	10	11	13	13	15	15	16	16	16	16	16	16	16	17	18	18	19	18	17	
	S	S	S	S	S	S	S	S	S	S	S	SSW	SSW	SW	SSW	SSW	SSW	SSW	SSW	SSW	SSW	SSW	SSW	SSW	SSW	SSW	SSW	SSW	SSW	S	SSW	S	
51/52	8	9	10	12	12	13	14	14	14	13	12	11	10	9	10	12	12	13	13	14	14	14	15	15	14	15	16	16	16	17	16	15	
	9	10	11	13	13	14	15	16	15	14	13	12	11	10	11	13	13	14	15	16	16	16	16	16	17	17	18	18	18	19	18	17	
	S	S	S	S	S	S	S	S	S	S	S	SSW	SSW	SW	SSW	SSW	SSW	SSW	SSW	SSW	SSW	SSW	SSW	SSW	SSW	SSW	SSW	SSW	SSW	SSW	SSW	SSW	
37/38	8	9	10	11	12	12	13	13	12	11	11	10	10	9	9	11	11	12	13	14	14	15	15	15	15	14	15	16	16	16	16	15	14
	10	10	11	12	13	13	14	14	14	12	12	11	11	10	10	12	12	14	14	16	16	16	17	17	17	17	17	18	18	18	18	17	16
	SSW	S	S	S	S	S	S	S	S	S	S	SSW	SSW	SSW	SSW	SSW	SSW	SSW	SSW	SSW	SSW	SSW	SSW	SSW	SSW	SSW	SSW	SSW	SSW	SSW	SSW	SSW	
25/26	8	9	10	10	11	11	11	11	11	10	9	9	8	8	9	10	11	12	13	13	14	14	13	14	13	14	14	15	14	14	14	14	13
	10	10	11	11	12	12	13	13	12	11	11	10	10	9	9	10	11	13	13	15	15	16	16	16	17	16	17	17	17	17	17	15	15
	SSW	S	S	S	S	S	S	S	S	S	S	SSW	SSW	SSW	SSW	SSW	SSW	SSW	SSW	SSW	SSW	SSW	SSW	SSW	SSW	SSW	SSW	SSW	SSW	SSW	SSW	SSW	
11/12	8	8	9	10	10	10	11	11	10	10	9	9	9	8	9	9	10	11	12	13	13	13	13	14	13	13	12	13	14	14	14	13	13
	9	10	10	11	11	12	12	12	12	11	11	10	10	9	10	10	11	13	13	15	15	16	16	16	16	15	16	16	16	16	15	14	
	SSW	SSW	S	S	S	S	S	S	S	S	S	SSW	SSW	SSW	SSW	SSW	SSW	SSW	SSW	SSW	SSW	SSW	SSW	SSW	SSW	SSW	SSW	SSW	SSW	SSW	SSW	SSW	
1 & 2 Bravo	8	8	9	9	10	11	11	12	12	11	11	10	10	9	10	11	12	13	14	15	15	16	16	15	14	13	13	14	15	15	15	15	
	9	9	10	10	11	12	12	13	13	12	12	11	11	10	11	12	13	14	15	16	17	17	17	16	16	16	16	16	16	16	16	16	
	SSW	SSW	S	S	S	S	S	S	S	S	S	SSW	SSW	SSW	SSW	SSW	SSW	SSW	SSW	SSW	SSW	SSW	SSW	SSW	SSW	SSW	SSW	SSW	SSW	SSW	SSW	SSW	

NOTE: This is automated data that may/may not agree with the official BAM thinking that's found on the daily slides or special visibility report slides. This data should be used as a guide only



# Houston Pilots: Sat. 6/17/2023

## Forecast Discussion

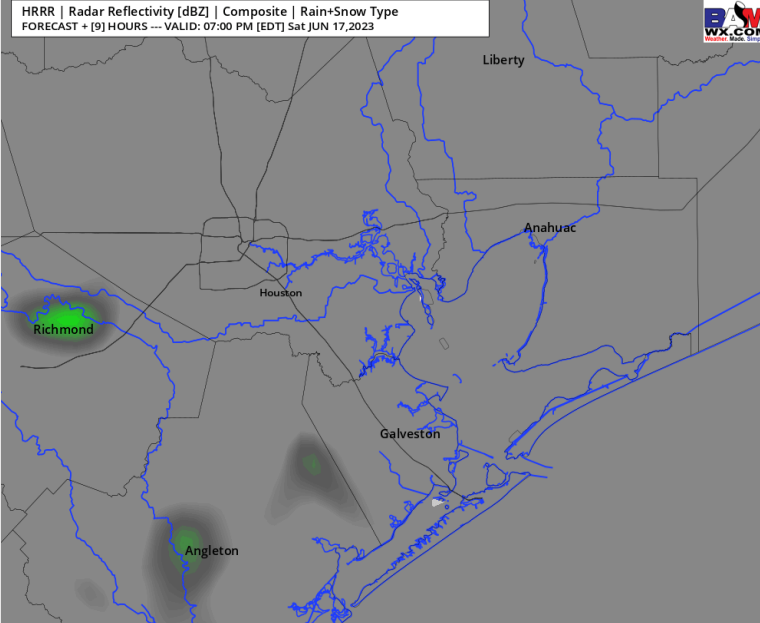
**Precip:** An isolated chance of light showers will be possible throughout the rest of the day today (10-20%), with the majority of rain staying to the north and west. Slightly better chances will occur after midnight.

**Wind:** Winds will be out of the S/SE for the remainder of the day. Winds N of Morgan's Point will be 2 - 7 kts with winds gradually picking up to 8-13 kts by 5 PM and will remain that way for the rest of the day. Winds S of Morgan's Point will remain at 13 - 18 kts for the rest of the day. **Wind gusts of 17-23 kts will be possible for all stations throughout the rest of the day.**

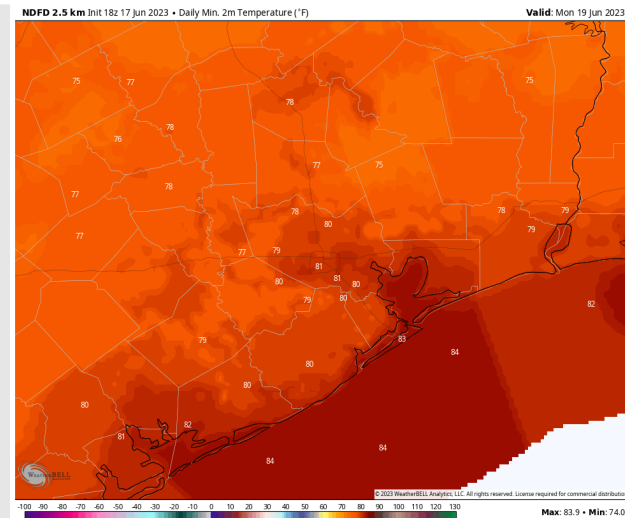
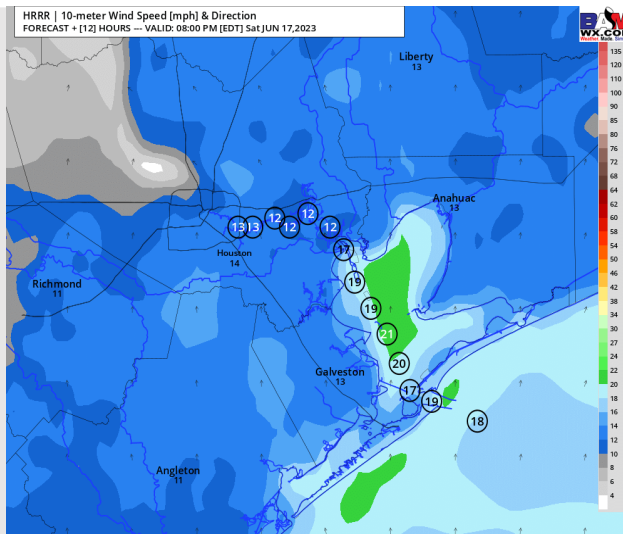
**Temps:** Low temperatures for Sunday will be in the mid 80's F for stations S of Morgan's Point and low 80's for stations N of Morgan's Point.

**Visibility:** Not anticipating any visibility concerns at this time.

## Precip Image: 6 PM CT



**Wind Speed:**  
7 PM CT



**Low Temps**  
**Sunday**

# Houston Pilots: Sun. 6/18/2023

## Forecast Discussion

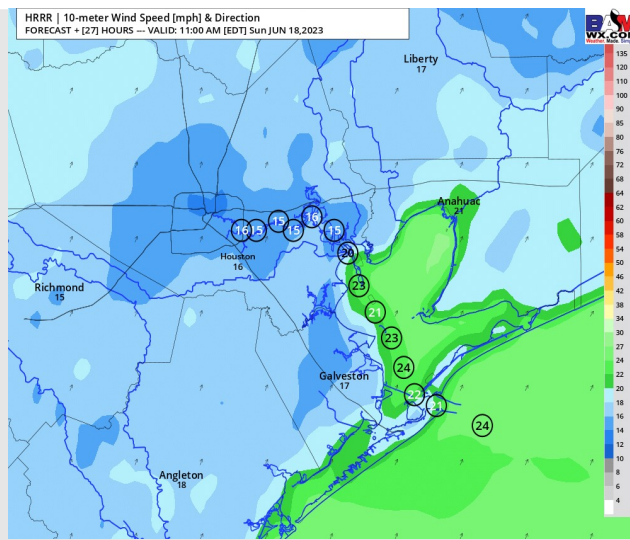
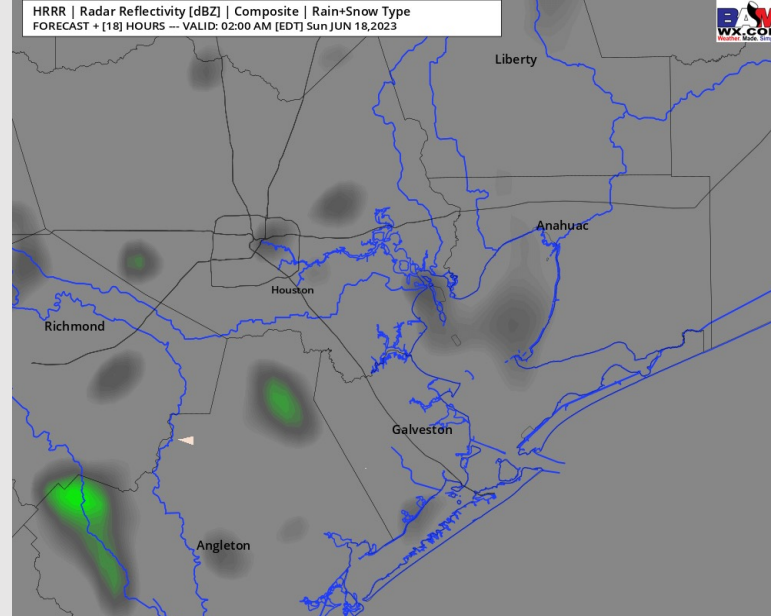
**Precip:** Favoring dry conditions for most of the day Sunday. A 20-30% chance for a pop-up shower can't be ruled out between 12 – 4 AM.

**Wind:** Winds will be out of the SW throughout the day. Winds N of Morgan's Point will be 3 – 8 kts through 9 AM SUN before increasing to 10– 16 kts for the remainder of the day. Winds S of Morgan's Point will be 12 – 17 kts through 6 AM when winds will increase to 18 - 23 kts and remain that way for the rest of the day. **Gusts of 20 – 25 kts will be possible after 6 AM, with higher gusts of 30-35 kts between 11 AM - 5 PM S of Morgan's Point.**

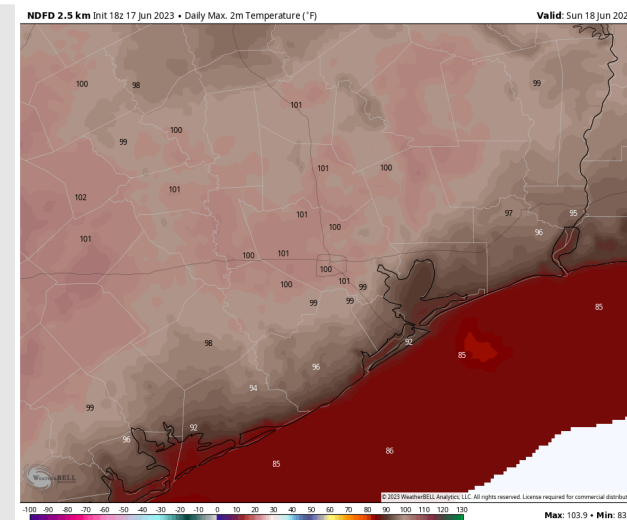
**Temps:** High temps on Sunday will be in the mid 80s F at the Boarding Station, low to mid 90s F S of Morgan's Point and upper 90s to low 100s F N of Boarding Station.

**Visibility:** Not anticipating any visibility concerns at this time.

## Precip Image: 1 AM CT



Wind Speed:  
10 AM CT



High Temps  
Sunday

# Houston Pilots: Mon. 6/19/2023

## Forecast Discussion

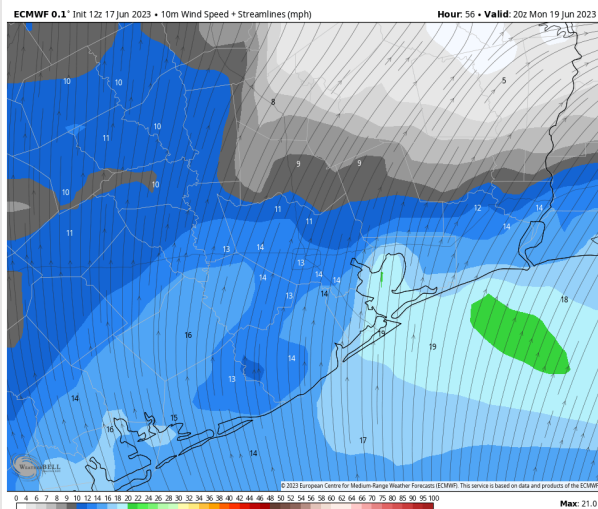
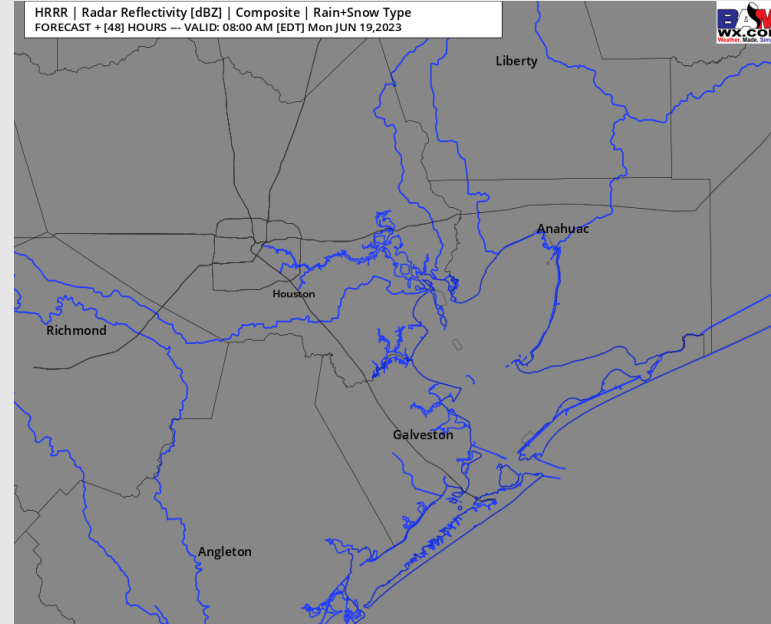
**Precip:** Favoring dry conditions throughout the day on Monday.

**Wind:** Favoring winds to be out of the S/SW, with wind speeds N of Morgan's Point at 5 – 10 kts through 12 PM. After 12 PM, winds will pick up to 8-13 kts for the rest of the day. Wind speeds S of Morgan's Point at 12 – 17 kts throughout the day. **Wind gusts of 20 – 25 kts possible between 6 AM to 8 PM.**

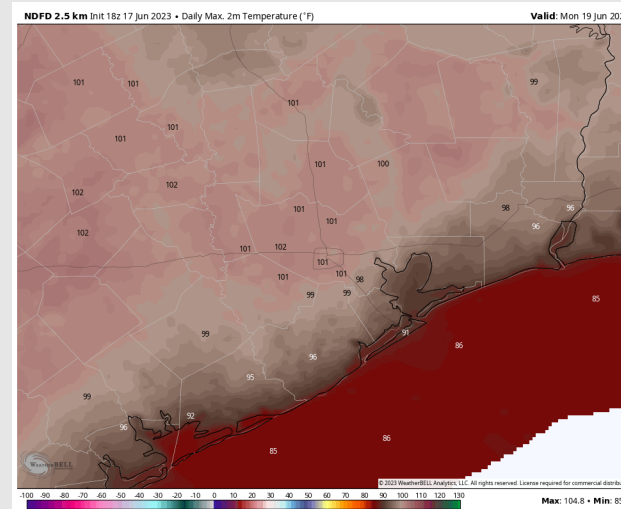
**Temps:** High temperatures on Monday will be in the upper 80s F at the Boarding Station, low to mid 90s F for stations S of Morgan's Point and upper 90s to low 100s F N of Morgan's Point.

**Visibility:** Not anticipating any visibility concerns at this time.

## Precip Image: 7 AM CT



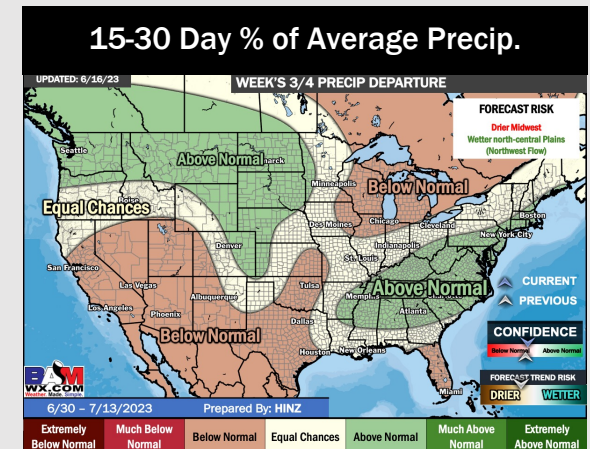
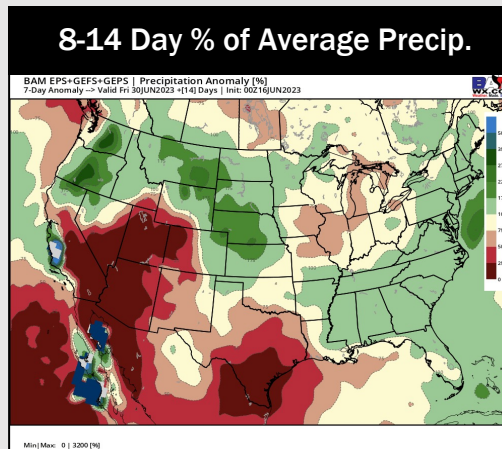
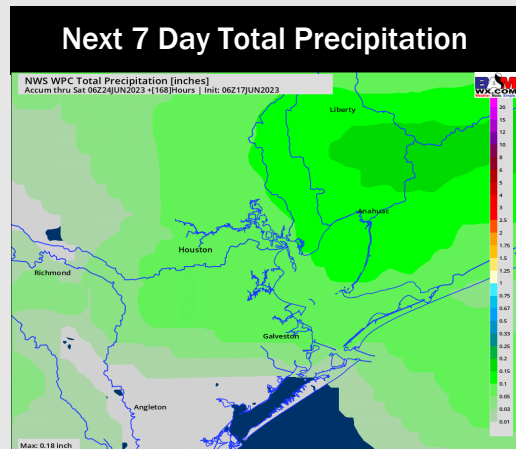
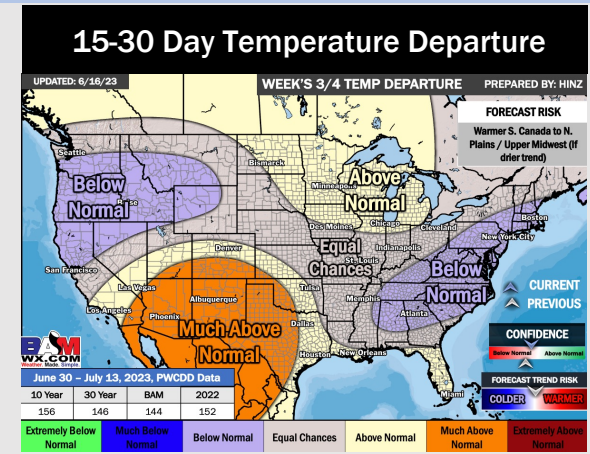
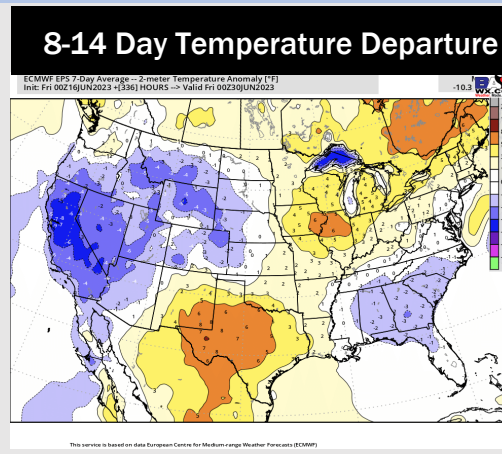
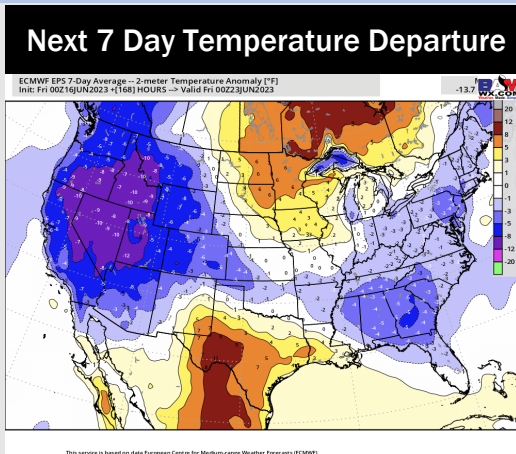
**Wind Speed:**  
**3 PM CT**



**High Temps**  
**Monday**



# Houston Pilots: 6/17/23



- Favoring drier conditions to move in over the next several days. Slightly above normal temperatures are favored over the next week.
- Expecting much below normal precipitation chances and slightly above normal temperatures for the week 2 timeframe.
- Above normal temperatures and below normal chances for precipitation are favored in the weeks  $\frac{3}{4}$  timeframe.