

# Houston Pilots Forecast Package

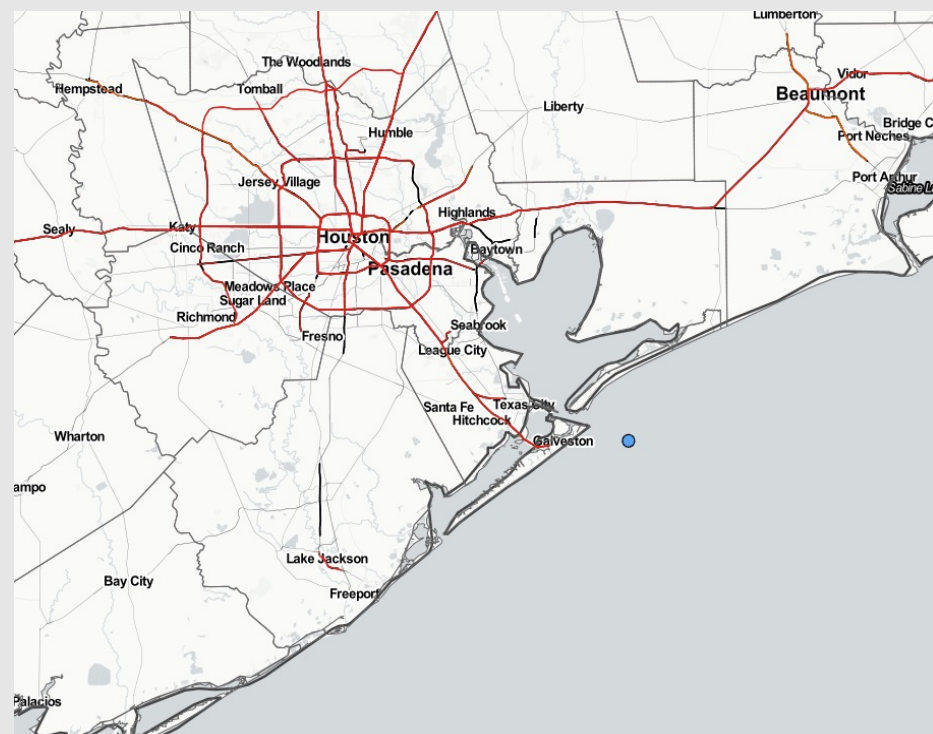


Updated: 1:40 PM CT  
Sunday, June 11, 2023

Forecaster: Jonathan Kipper

## Weather Headlines

- Favoring dry conditions over the next few days.
- Calmer winds will be possible over the next few days N of Morgan's Point, with periods of slightly elevated winds for stations south.  
**More details in slides below.**
- Aside from a very low-end patchy fog risk Monday morning, not anticipating any visibility concerns at this time.
- No tropical threats to monitor.



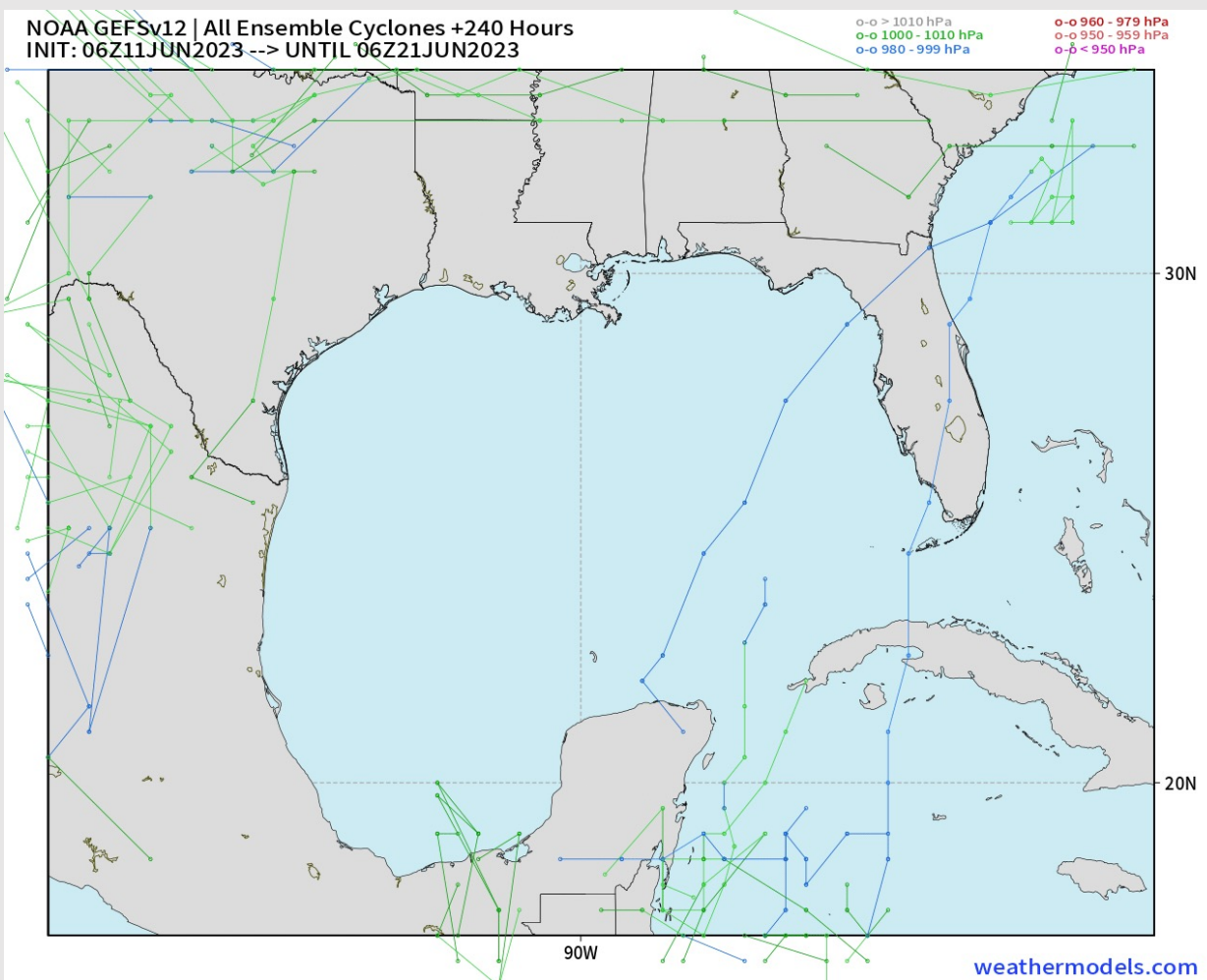
**Radar/NWS Alerts: 1:35 PM CT**



As always, please do not hesitate to reach out to us with any forecast questions via the chat option on the Weather Porthole or our on-call number, **(317)-560-8122** press 1 for forecast questions.

# Houston Pilots Tropical Update

## American Model Low Pressure Tracks Next 10-Day Tracks



No tropical activity anticipated over the next 7-10 days.

# Houston Pilots Visibility Chart (miles)



| Time<br><small>Reload this page</small> | Sun 12pm | Sun 1pm | Sun 2pm | Sun 3pm | Sun 4pm | Sun 5pm | Sun 6pm | Sun 7pm | Sun 8pm | Sun 9pm | Sun 10pm | Sun 11pm | Mon 12am | Mon 1am | Mon 2am | Mon 3am | Mon 4am | Mon 5am | Mon 6am | Mon 7am | Mon 8am | Mon 9am | Mon 10am | Mon 11am | Mon 12pm | Mon 1pm | Mon 2pm | Mon 3pm | Mon 4pm | Mon 5pm | Mon 6pm | Mon 7pm | Mon 8pm |
|---|----------|---------|---------|---------|---------|---------|---------|---------|---------|---------|----------|----------|----------|---------|---------|---------|---------|---------|---------|---------|---------|---------|----------|----------|----------|---------|---------|---------|---------|---------|---------|---------|---------|
| 610 Bridge                              | 10       | 10      | 10      | 10      | 10      | 10      | 10      | 10      | 10      | 10      | 10       | 10       | 10       | 10      | 10      | 10      | 10      | 10      | 8       | 6       | 7       | 10      | 10       | 10       | 10       | 10      | 10      | 10      | 10      | 10      | 10      | 10      | 10      |
| Kinder 1                                | 10       | 10      | 10      | 10      | 10      | 10      | 10      | 10      | 10      | 10      | 10       | 10       | 10       | 10      | 10      | 10      | 10      | 10      | 8       | 7       | 8       | 10      | 10       | 10       | 10       | 10      | 10      | 10      | 10      | 10      | 10      | 10      | 10      |
| Greens Bayou                            | 10       | 10      | 10      | 10      | 10      | 10      | 10      | 10      | 10      | 10      | 10       | 10       | 10       | 10      | 10      | 10      | 10      | 10      | 10      | 8       | 8       | 8       | 10       | 10       | 10       | 10      | 10      | 10      | 10      | 10      | 10      | 10      | 10      |
| Shell Crude                             | 10       | 10      | 10      | 10      | 10      | 10      | 10      | 10      | 10      | 10      | 10       | 10       | 10       | 10      | 10      | 10      | 10      | 10      | 10      | 9       | 8       | 9       | 10       | 10       | 10       | 10      | 10      | 10      | 10      | 10      | 10      | 10      | 10      |
| Lynchburg Ferries                       | 10       | 10      | 10      | 10      | 10      | 10      | 10      | 10      | 10      | 10      | 10       | 10       | 10       | 10      | 10      | 10      | 10      | 10      | 10      | 9       | 8       | 10      | 10       | 10       | 10       | 10      | 10      | 10      | 10      | 10      | 10      | 10      | 10      |
| Exxon 3                                 | 10       | 10      | 10      | 10      | 10      | 10      | 10      | 10      | 10      | 10      | 10       | 10       | 10       | 10      | 10      | 10      | 10      | 10      | 10      | 10      | 10      | 10      | 10       | 10       | 10       | 10      | 10      | 10      | 10      | 10      | 10      | 10      | 10      |
| Morgans Point                           | 10       | 10      | 10      | 10      | 10      | 10      | 10      | 10      | 10      | 10      | 10       | 10       | 10       | 10      | 10      | 10      | 10      | 10      | 10      | 10      | 10      | 10      | 10       | 10       | 10       | 10      | 10      | 10      | 10      | 10      | 10      | 10      | 10      |
| 75/76                                   | 10       | 10      | 10      | 10      | 10      | 10      | 10      | 10      | 10      | 10      | 10       | 10       | 10       | 10      | 10      | 10      | 10      | 10      | 10      | 10      | 10      | 10      | 10       | 10       | 10       | 10      | 10      | 10      | 10      | 10      | 10      | 10      | 10      |
| 63/64                                   | 10       | 10      | 10      | 10      | 10      | 10      | 10      | 10      | 10      | 10      | 10       | 10       | 10       | 10      | 10      | 10      | 10      | 10      | 10      | 10      | 10      | 10      | 10       | 10       | 10       | 10      | 10      | 10      | 10      | 10      | 10      | 10      | 10      |
| 51/52                                   | 10       | 10      | 10      | 10      | 10      | 10      | 10      | 10      | 10      | 10      | 10       | 10       | 10       | 10      | 10      | 10      | 10      | 10      | 10      | 10      | 10      | 10      | 10       | 10       | 10       | 10      | 10      | 10      | 10      | 10      | 10      | 10      | 10      |
| 37/38                                   | 10       | 10      | 10      | 10      | 10      | 10      | 10      | 10      | 10      | 10      | 10       | 10       | 10       | 10      | 10      | 10      | 10      | 10      | 10      | 10      | 10      | 10      | 10       | 10       | 10       | 10      | 10      | 10      | 10      | 10      | 10      | 10      | 10      |
| 25/26                                   | 10       | 10      | 10      | 10      | 10      | 10      | 10      | 10      | 10      | 10      | 10       | 10       | 10       | 10      | 10      | 10      | 10      | 10      | 10      | 10      | 10      | 10      | 10       | 10       | 10       | 10      | 10      | 10      | 10      | 10      | 10      | 10      | 10      |
| 11/12                                   | 10       | 10      | 10      | 10      | 10      | 10      | 10      | 10      | 10      | 10      | 10       | 10       | 10       | 10      | 10      | 10      | 10      | 10      | 10      | 10      | 10      | 10      | 10       | 10       | 10       | 10      | 10      | 10      | 10      | 10      | 10      | 10      | 10      |
| 1 & 2 Bravo                             | 10       | 10      | 10      | 10      | 10      | 10      | 10      | 10      | 10      | 10      | 10       | 10       | 10       | 10      | 10      | 10      | 10      | 10      | 10      | 10      | 10      | 10      | 10       | 10       | 10       | 10      | 10      | 10      | 10      | 10      | 10      | 10      | 10      |

NOTE: This is automated data that may/may not agree with the official BAM thinking that's found on the daily slides or special visibility report slides. This data should be used as a guide only

# Houston Pilots Wind Chart



**Example**

Sustained wind 13 Knots

Gusts 18 Knots

Wind from the N

WS: 13  
G:18  
N

| Time Knots        | Sun 12pm | Sun 1pm | Sun 2pm | Sun 3pm | Sun 4pm | Sun 5pm | Sun 6pm | Sun 7pm | Sun 8pm | Sun 9pm | Sun 10pm | Sun 11pm | Mon 12am | Mon 1am | Mon 2am | Mon 3am | Mon 4am | Mon 5am | Mon 6am | Mon 7am | Mon 8am | Mon 9am | Mon 10am | Mon 11am | Mon 12pm | Mon 1pm | Mon 2pm | Mon 3pm | Mon 4pm | Mon 5pm | Mon 6pm | Mon 7pm | Mon 8pm |    |
|-------------------|----------|---------|---------|---------|---------|---------|---------|---------|---------|---------|----------|----------|----------|---------|---------|---------|---------|---------|---------|---------|---------|---------|----------|----------|----------|---------|---------|---------|---------|---------|---------|---------|---------|----|
| 610 Bridge        | 6        | 5       | 5       | 5       | 5       | 6       | 8       | 8       | 8       | 8       | 7        | 7        | 6        | 6       | 5       | 4       | 5       | 4       | 4       | 4       | 5       | 5       | 6        | 6        | 6        | 6       | 7       | 8       | 8       | 9       | 10      | 10      | 9       |    |
|                   | 9        | 8       | 8       | 7       | 7       | 8       | 9       | 10      | 11      | 11      | 11       | 11       | 10       | 9       | 8       | 7       | 7       | 6       | 6       | 6       | 7       | 9       | 9        | 8        | 9        | 10      | 10      | 11      | 12      | 13      | 13      | 11      |         |    |
|                   | SW       | SW      | SW      | SSW     | SSW     | S       | S       | SSE     | S       | S       | S        | S        | S        | SSW     | SSW     | S       | S       | SSW     | SSW     | S       | SSW     | SSW     | SSW      | SSW      | S        | S       | S       | S       | S       | S       | S       | SSE     |         |    |
| Kinder 1          | 6        | 5       | 5       | 5       | 5       | 7       | 8       | 8       | 8       | 7       | 7        | 7        | 6        | 6       | 5       | 4       | 5       | 4       | 4       | 4       | 5       | 5       | 6        | 6        | 6        | 6       | 7       | 8       | 8       | 9       | 10      | 10      | 9       |    |
|                   | 9        | 8       | 8       | 7       | 7       | 9       | 10      | 11      | 12      | 11      | 11       | 11       | 10       | 9       | 8       | 7       | 7       | 6       | 6       | 6       | 7       | 7       | 8        | 8        | 8        | 9       | 9       | 10      | 11      | 11      | 12      | 13      | 11      |    |
|                   | SW       | SW      | SW      | SSW     | S       | S       | SSE     | SSE     | S       | S       | S        | S        | S        | SSW     | SSW     | S       | S       | SSW     | S       | S       | SSW     | SSW     | SSW      | SSW      | S        | S       | S       | S       | S       | S       | S       | SSE     |         |    |
| Greens Bayou      | 6        | 5       | 5       | 5       | 6       | 7       | 9       | 9       | 8       | 7       | 7        | 7        | 6        | 6       | 5       | 4       | 5       | 4       | 4       | 4       | 5       | 5       | 5        | 6        | 6        | 6       | 7       | 8       | 8       | 9       | 10      | 10      | 9       |    |
|                   | 9        | 8       | 8       | 8       | 8       | 9       | 10      | 11      | 12      | 11      | 11       | 11       | 9        | 8       | 7       | 7       | 6       | 6       | 6       | 6       | 7       | 7       | 8        | 8        | 8        | 8       | 9       | 10      | 11      | 11      | 12      | 13      | 12      |    |
|                   | SW       | SW      | SSW     | SSW     | SSE     | SSE     | SSE     | SSE     | S       | S       | S        | S        | S        | SSW     | SSW     | S       | S       | SSW     | S       | S       | SSW     | SSW     | SSW      | S        | S        | S       | S       | S       | S       | S       | SSE     | SSE     | SSE     |    |
| Shell Crude       | 6        | 5       | 5       | 6       | 6       | 8       | 9       | 9       | 8       | 7       | 7        | 7        | 6        | 5       | 5       | 5       | 5       | 4       | 4       | 4       | 5       | 5       | 6        | 6        | 6        | 7       | 8       | 8       | 9       | 10      | 10      | 9       |         |    |
|                   | 9        | 8       | 8       | 8       | 8       | 10      | 11      | 12      | 12      | 11      | 11       | 11       | 9        | 8       | 8       | 7       | 7       | 7       | 7       | 7       | 7       | 7       | 8        | 8        | 8        | 8       | 9       | 10      | 11      | 11      | 12      | 13      | 12      |    |
|                   | SW       | SSW     | SSW     | S       | SSE     | SSE     | SSE     | SSE     | S       | S       | S        | S        | S        | SSW     | SSW     | S       | S       | SSW     | SSW     | S       | SSW     | SSW     | SSW      | S        | S        | S       | S       | SSE     | SSE     | SSE     | SSE     | S       | SSE     |    |
| Lynchburg Ferries | 6        | 5       | 5       | 6       | 7       | 9       | 10      | 10      | 9       | 8       | 8        | 7        | 7        | 6       | 5       | 5       | 5       | 5       | 4       | 5       | 5       | 5       | 6        | 6        | 6        | 7       | 8       | 9       | 9       | 10      | 11      | 11      | 9       |    |
|                   | 8        | 8       | 8       | 9       | 9       | 10      | 11      | 12      | 12      | 12      | 11       | 11       | 9        | 8       | 8       | 7       | 7       | 7       | 7       | 7       | 7       | 7       | 8        | 8        | 8        | 8       | 10      | 11      | 11      | 12      | 13      | 14      | 12      |    |
|                   | SSW      | SSW     | SSW     | S       | SSE     | SSE     | SSE     | SSE     | S       | S       | S        | S        | S        | SSW     | SSW     | S       | SSW     | SSW     | SSW     | S       | SSW     | SSW     | SSW      | S        | S        | SSE     | SSE     | SSE     | SSE     | SSE     | SSE     | SSE     | SSW     |    |
| Exxon 3           | 6        | 5       | 6       | 7       | 8       | 9       | 10      | 10      | 9       | 9       | 8        | 8        | 7        | 7       | 6       | 5       | 6       | 5       | 5       | 5       | 5       | 5       | 6        | 6        | 7        | 7       | 9       | 9       | 10      | 11      | 11      | 11      | 10      |    |
|                   | 8        | 8       | 8       | 9       | 10      | 11      | 12      | 13      | 12      | 12      | 12       | 11       | 10       | 9       | 8       | 8       | 8       | 7       | 7       | 7       | 7       | 8       | 8        | 8        | 8        | 8       | 10      | 11      | 12      | 12      | 13      | 14      | 12      |    |
|                   | SW       | SSW     | S       | SSE     | SSE     | S       | S       | S       | S       | S       | S        | SSW      | SSW      | SSW     | SSW     | S       | SSW     | SSW     | SSW     | SSW     | SSW     | SSW     | SSW      | S        | S        | SSE     | SSE     | SSE     | SSE     | SSE     | SSE     | S       | S       |    |
| Morgans Point     | 7        | 6       | 7       | 9       | 10      | 11      | 12      | 12      | 11      | 11      | 10       | 9        | 9        | 8       | 7       | 7       | 7       | 7       | 6       | 6       | 6       | 6       | 7        | 7        | 7        | 8       | 10      | 11      | 11      | 12      | 12      | 13      | 12      |    |
|                   | 9        | 8       | 9       | 10      | 11      | 13      | 13      | 14      | 14      | 13      | 12       | 11       | 11       | 10      | 9       | 9       | 9       | 8       | 8       | 8       | 8       | 8       | 9        | 9        | 9        | 8       | 9       | 11      | 12      | 13      | 14      | 14      | 15      | 14 |
|                   | SSW      | S       | S       | SSE     | SSE     | S       | S       | S       | S       | S       | S        | SSW      | SSW      | SSW     | SSW     | SSW     | SSW     | SSW     | SW      | SSW     | SSW     | SSW     | S        | S        | SSE      | SSE     | SSE     | SSE     | SSE     | SSE     | S       | S       | S       |    |
| 75/76             | 8        | 7       | 9       | 10      | 11      | 13      | 14      | 14      | 14      | 13      | 12       | 11       | 11       | 10      | 10      | 9       | 9       | 9       | 8       | 8       | 8       | 8       | 8        | 8        | 8        | 9       | 11      | 12      | 12      | 14      | 14      | 14      | 14      |    |
|                   | 9        | 9       | 10      | 11      | 12      | 14      | 15      | 16      | 16      | 15      | 14       | 13       | 12       | 12      | 11      | 10      | 10      | 10      | 9       | 9       | 9       | 9       | 9        | 10       | 9        | 10      | 12      | 13      | 13      | 15      | 16      | 16      | 16      |    |
|                   | SSW      | S       | S       | S       | S       | S       | S       | S       | S       | S       | S        | SSW      | SSW      | SSW     | SSW     | SSW     | SSW     | SSW     | SW      | SW      | SSW     | SSW     | SSW      | S        | S        | SSE     | SSE     | SSE     | SSE     | SSE     | S       | S       | S       |    |
| 63/64             | 9        | 8       | 10      | 11      | 12      | 13      | 15      | 15      | 14      | 14      | 12       | 11       | 11       | 11      | 10      | 10      | 9       | 10      | 8       | 8       | 9       | 9       | 9        | 9        | 9        | 9       | 11      | 12      | 12      | 13      | 14      | 14      | 14      |    |
|                   | 10       | 10      | 11      | 12      | 13      | 15      | 16      | 16      | 16      | 15      | 14       | 13       | 12       | 12      | 11      | 11      | 10      | 11      | 9       | 9       | 10      | 10      | 9        | 10       | 10       | 10      | 12      | 13      | 13      | 14      | 15      | 16      | 16      |    |
|                   | SSW      | SSW     | S       | S       | S       | S       | S       | S       | S       | S       | S        | SSW      | SSW      | SSW     | SSW     | SSW     | SSW     | SSW     | SSW     | SSW     | SSW     | SSW     | S        | S        | S        | S       | SSE     | S       | S       | S       | S       | S       |         |    |
| 51/52             | 10       | 9       | 10      | 11      | 12      | 13      | 14      | 14      | 14      | 13      | 12       | 11       | 11       | 11      | 10      | 10      | 9       | 10      | 8       | 8       | 9       | 9       | 9        | 10       | 10       | 9       | 11      | 11      | 12      | 12      | 13      | 14      | 14      |    |
|                   | 11       | 10      | 11      | 12      | 13      | 14      | 15      | 16      | 15      | 14      | 13       | 12       | 12       | 12      | 11      | 11      | 10      | 11      | 9       | 9       | 10      | 10      | 10       | 11       | 10       | 10      | 12      | 12      | 13      | 13      | 15      | 15      | 15      |    |
|                   | SSW      | SSW     | S       | S       | S       | S       | S       | S       | S       | S       | S        | SSW      | SSW      | SSW     | SSW     | SSW     | SSW     | SSW     | SSW     | SSW     | SSW     | SSW     | SSW      | S        | S        | S       | S       | S       | S       | S       | S       | S       |         |    |
| 37/38             | 11       | 10      | 11      | 11      | 12      | 12      | 13      | 13      | 12      | 12      | 11       | 11       | 11       | 11      | 10      | 10      | 9       | 9       | 8       | 8       | 8       | 9       | 9        | 10       | 10       | 9       | 10      | 11      | 11      | 11      | 12      | 12      | 12      |    |
|                   | 12       | 11      | 12      | 12      | 13      | 13      | 14      | 14      | 14      | 13      | 12       | 12       | 12       | 12      | 11      | 10      | 10      | 10      | 9       | 9       | 9       | 10      | 10       | 11       | 11       | 10      | 11      | 12      | 12      | 12      | 13      | 13      | 14      |    |
|                   | SSW      | SSW     | SSW     | S       | S       | S       | S       | S       | S       | S       | S        | SSW      | SSW      | SSW     | SSW     | SSW     | SSW     | SSW     | SSW     | SSW     | SSW     | SSW     | SSW      | SSW      | S        | S       | S       | S       | S       | S       | S       | S       |         |    |
| 25/26             | 11       | 10      | 10      | 10      | 11      | 11      | 11      | 11      | 11      | 10      | 10       | 10       | 10       | 10      | 10      | 9       | 8       | 9       | 8       | 8       | 8       | 9       | 9        | 9        | 9        | 9       | 10      | 10      | 10      | 10      | 10      | 10      | 11      |    |
|                   | 12       | 11      | 11      | 11      | 12      | 12      | 13      | 13      | 12      | 11      | 11       | 11       | 11       | 11      | 11      | 10      | 9       | 10      | 9       | 9       | 9       | 10      | 10       | 10       | 11       | 10      | 11      | 11      | 11      | 11      | 11      | 11      | 12      |    |
|                   | SSW      | SSW     | SSW     | SSW     | S       | S       | S       | S       | S       | S       | S        | SSW      | SSW      | SSW     | SSW     | SSW     | SSW     | SSW     | SSW     | SSW     | SSW     | SSW     | SSW      | SSW      | S        | S       | S       | S       | S       | S       | S       | S       |         |    |
| 11/12             | 11       | 10      | 10      | 10      | 10      | 11      | 11      | 11      | 11      | 10      | 10       | 10       | 10       | 10      | 10      | 9       | 8       | 9       | 8       | 8       | 8       | 9       | 9        | 9        | 9        | 9       | 9       | 9       | 9       | 9       | 9       | 10      | 10      | 10 |
|                   | 12       | 11      | 11      | 11      | 11      | 12      | 12      | 12      | 12      | 11      | 11       | 11       | 11       | 11      | 11      | 10      | 10      | 10      | 9       | 9       | 9       | 10      | 10       | 10       | 10       | 10      | 11      | 11      | 11      | 11      | 11      | 11      | 12      |    |
|                   | SSW      | SSW     | SSW     | SSW     | SSW     | S       | S       | S       | S       | S       | S        | SSW      | SSW      | SSW     | SSW     | SSW     | SSW     | SSW     | SSW     | SSW     | SSW     | SSW     | SSW      | SSW      | SSW      | S       | S       | S       | S       | S       | S       | S       | S       |    |
| 1 & 2 Bravo       | 11       | 10      | 10      | 10      | 10      | 11      | 12      | 12      | 12      | 12      | 12       | 11       | 12       | 12      | 12      | 11      | 10      | 11      | 10      | 9       | 10      | 10      | 10       | 10       | 10       | 9       | 9       | 9       | 9       | 9       | 9       | 10      | 11      | 12 |
|                   | 13       | 11      | 11      | 11      | 11      | 12      | 13      | 13      | 13      | 13      | 13       | 12       | 13       | 13      | 13      | 12      | 11      | 11      | 11      | 10      | 11      | 11      | 11       | 11       | 11       | 10      | 10      | 10      | 10      | 10      | 10      | 11      | 12      | 13 |
|                   | SW       | SW      | SSW     | SSW     | SSW     | SSW     | S       | S       | S       | S       | S        | S        | SSW      | SSW     | SSW     | SSW     | SSW     | SSW     | SSW     | SSW     | SSW     | SSW     | SSW      | SSW      | SSW      | SSW     | SSW     | S       | S       | S       | S       | S       | S       |    |

NOTE: This is automated data that may/may not agree with the official BAM thinking that's found on the daily slides or special visibility report slides. This data should be used as a guide only



# Houston Pilots: Sun. 6/11/2023

## Forecast Discussion

**Precip:** Favoring dry conditions throughout the day today.

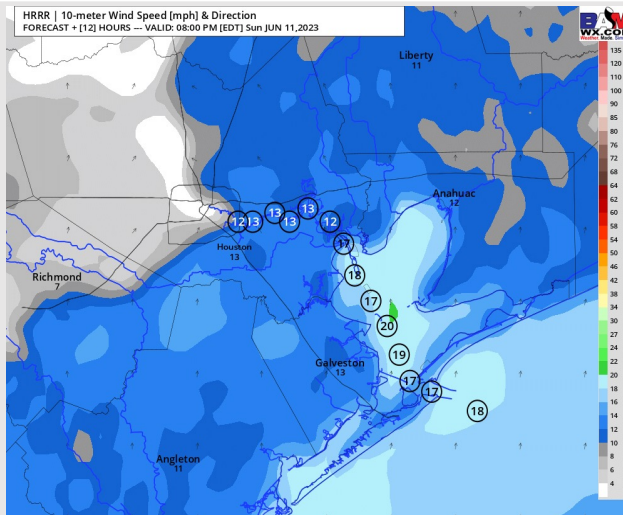
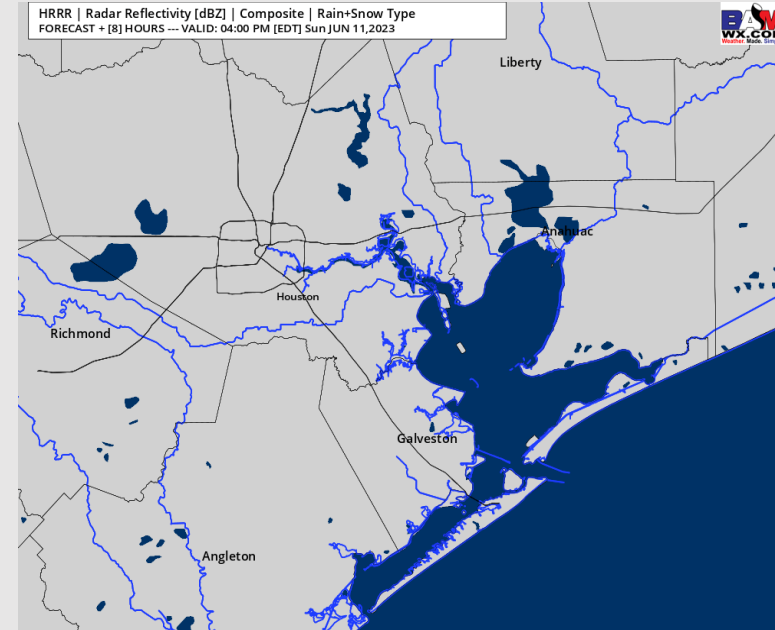
**Wind:** Winds will be out of the SSW for the entire day today. Wind speeds N of Morgan's Point will be 6-12 kts throughout the day today. Winds S of Morgan's Point will be at 13 – 19 kts throughout the rest of the day as well.

**Temps:** Low temperatures on Monday will be in the low 80s F S of Morgan's Point and mid 70s F at all other stations.

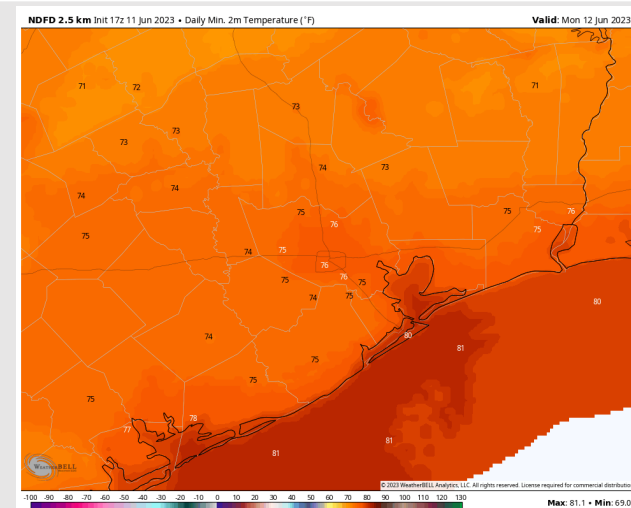
**Visibility:** Not anticipating any visibility concerns at this time.

## Precip Image: 3 PM CT

HRRR | Radar Reflectivity [dBZ] | Composite | Rain+Snow Type  
FORECAST + [8] HOURS — VALID: 04:00 PM [EDT] Sun JUN 11, 2023



Wind Speed:  
7 PM CT



Low Temps  
Monday

# Houston Pilots: Mon. 6/12/2023

## Forecast Discussion

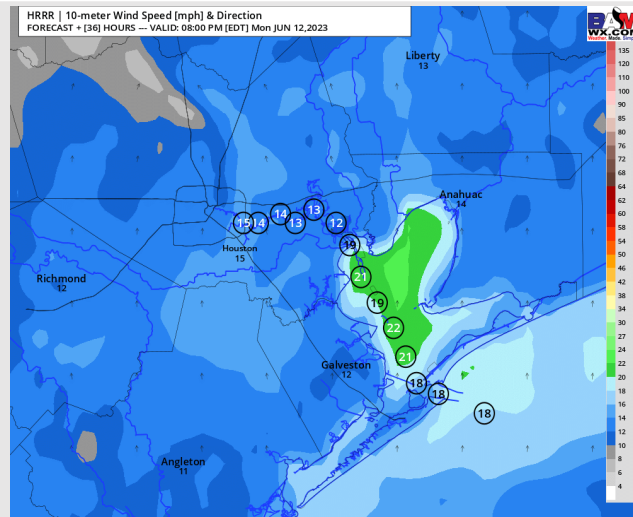
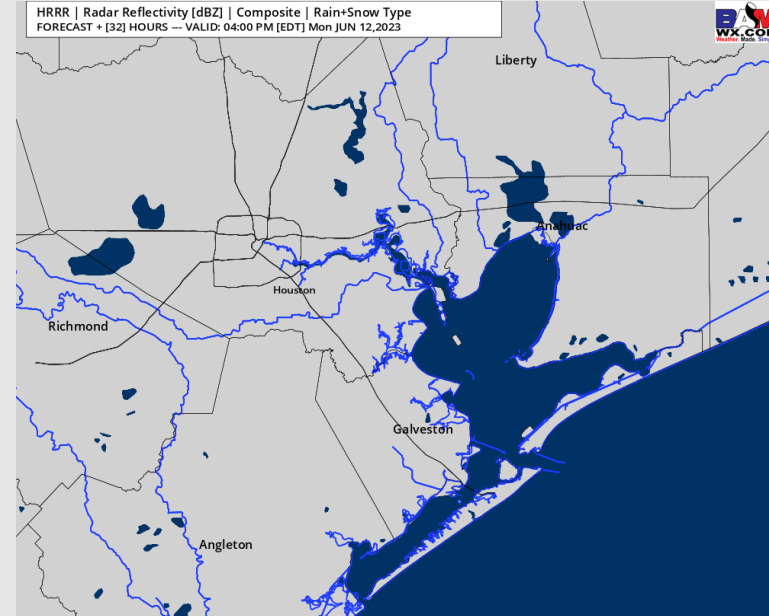
**Precip:** Dry conditions anticipated throughout the day on Monday.

**Wind:** Winds out of the SW throughout majority of the day on Monday, before shifting to out of the S by 8 PM. N of Morgan's Point, wind speeds will be 3 – 8 kts before increasing to 8 – 13 kts by 6 PM. Speeds S of Morgan's Point will be 10 – 15 kts through 3 PM, before increasing to 15-20 kts and remaining that way for the rest of the day.

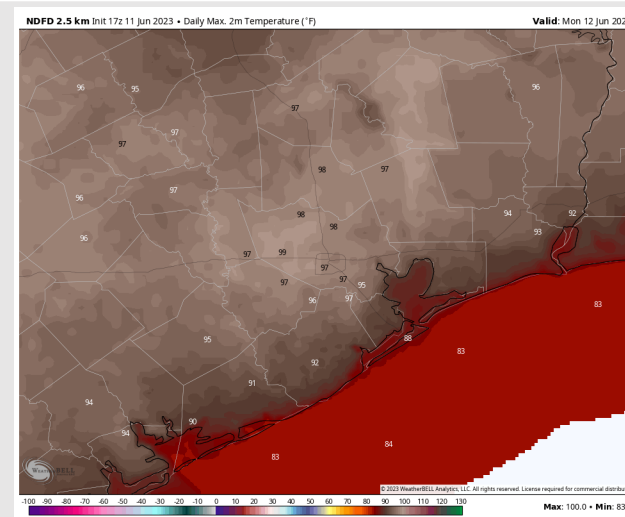
**Temps:** High temperatures on Monday will be in the mid 80s F for the Boarding Station, upper 80s to low 90s F for Stations S of Morgan's Point and mid to upper 90s F N of Morgan's Point.

**Visibility:** Very low-end potential for radiation fog near the 610 Bridge from 4-6 AM.

## Precip Image: 3 PM CT



**Wind Speed:**  
7 PM CT



**High Temps**  
**Monday**

# Houston Pilots: Tue. 6/13/2023

## Forecast Discussion

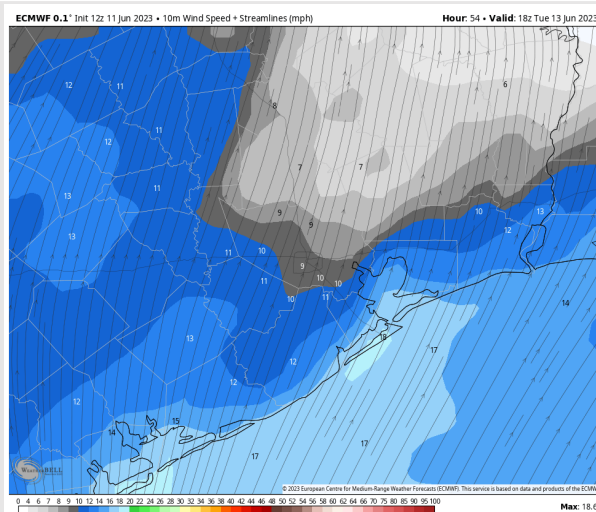
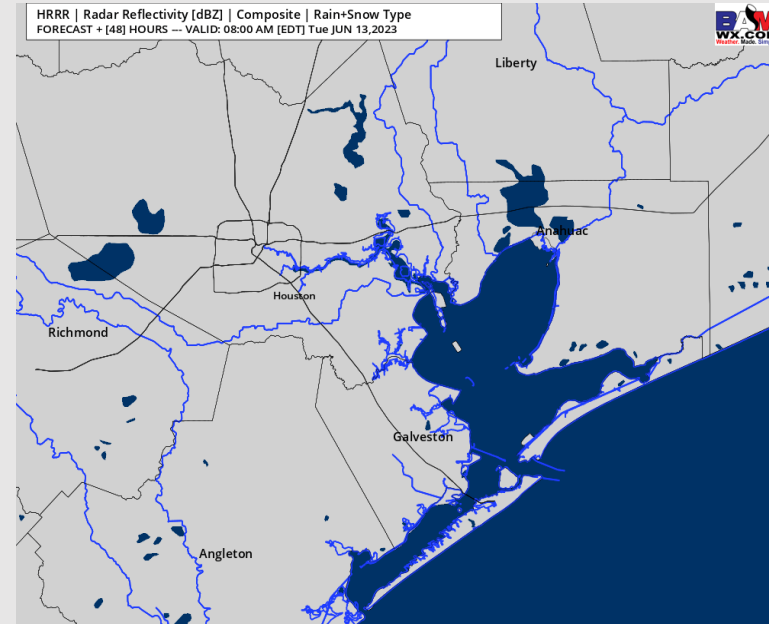
**Precip:** Dry conditions are anticipated throughout the day on Tuesday.

**Wind:** Favoring winds to be out of the S/SW all day on Tuesday. Winds N of Morgan's Point will be 7 – 12 kts throughout the day. Winds S of Morgan's Point will start off at 15-20 kts through 1 PM before dying down to 12 – 17 kts for the remainder of the day.

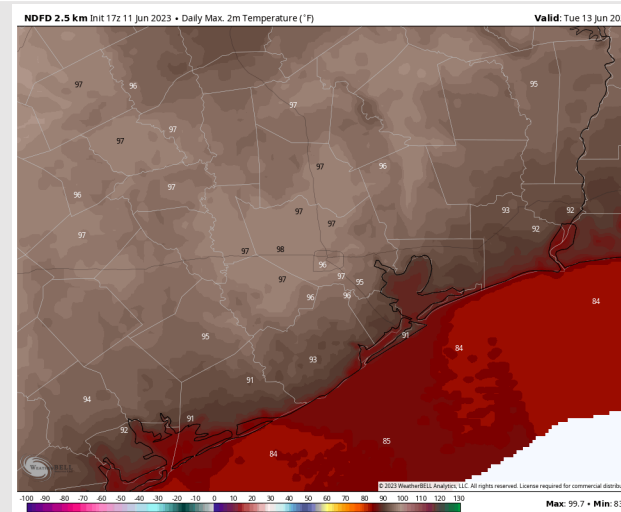
**Temps:** High temperatures on Tuesday will once again be in the mid 80s F for the Boarding Station, upper 80s to low 90s F for Stations S of Morgan's Point and mid to upper 90s F N of Morgan's Point.

**Visibility:** Not anticipating any visibility concerns at this time.

## Precip Image: 7 AM CT



Wind Speed:  
1 PM CT

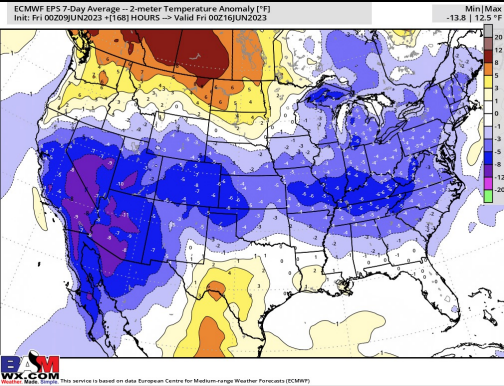


High Temps  
Tuesday

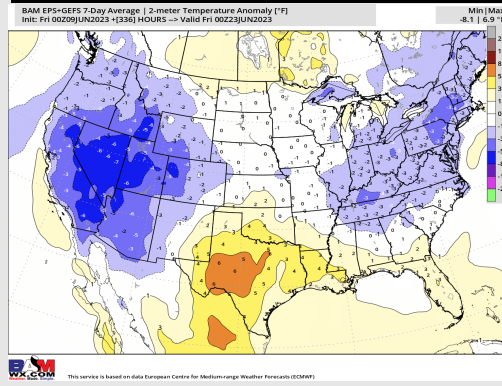


# Houston Pilots: 6/11/23

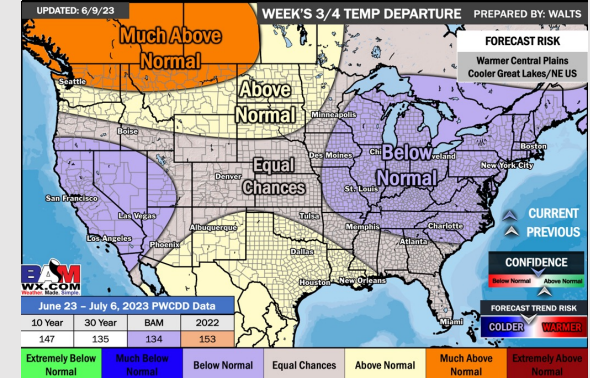
## Next 7 Day Temperature Departure



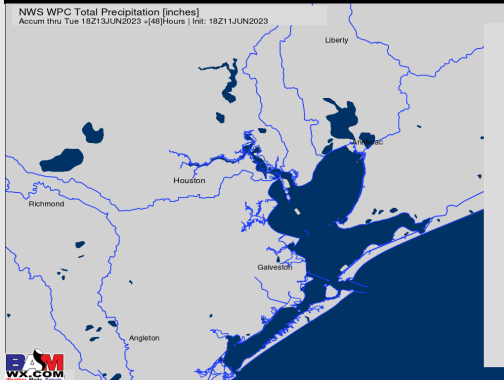
## 8-14 Day Temperature Departure



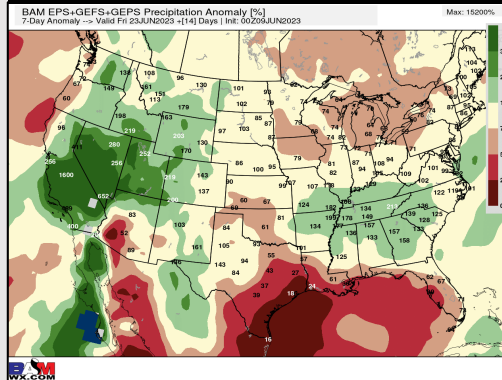
## 15-30 Day Temperature Departure



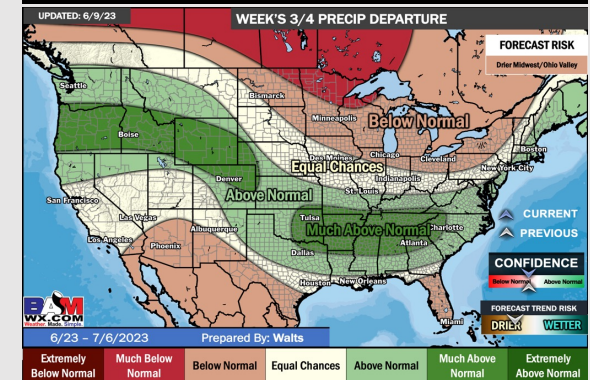
## Next 7 Day Total Precipitation



## 8-14 Day % of Average Precip.



## 15-30 Day % of Average Precip.



- Favoring drier conditions to move in over the next few days. Favoring seasonable temperatures over the next week.
- Expecting below normal precipitation chances and slightly above normal temperatures for the week 2 timeframe.
- Above normal temperatures and normal chances for precipitation are favored in the weeks <sup>3</sup>/<sub>4</sub> timeframe.