

# Houston Pilots Forecast Package

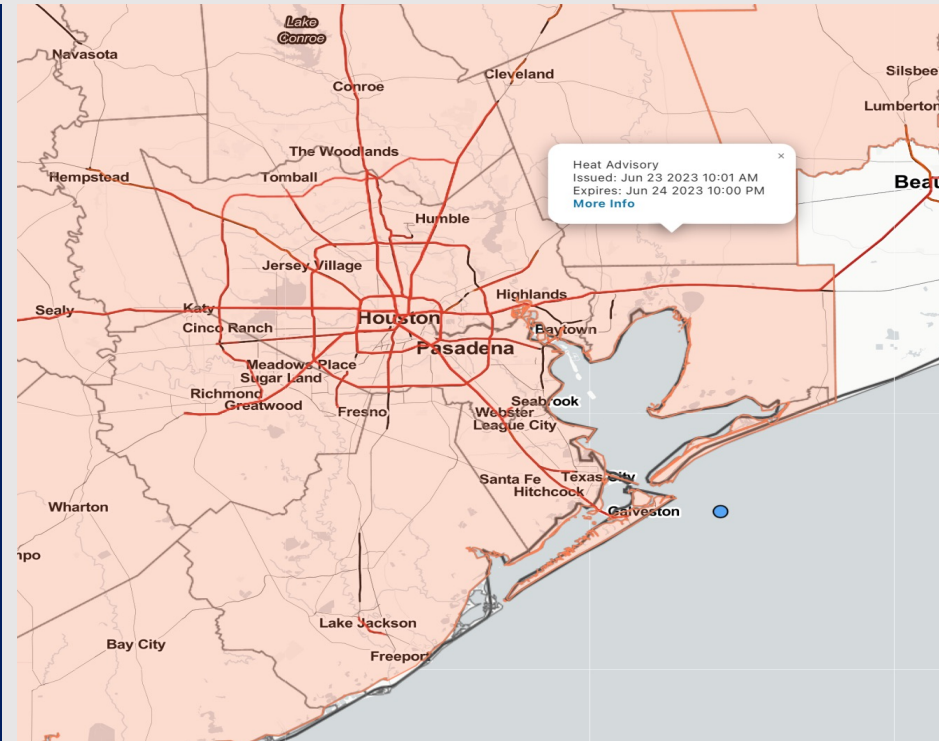


Updated: 3:30 PM CT  
Friday, June 23, 2023

Forecaster: Tyler Riggles

## Weather Headlines

- Monitoring a few shots of showers and storms over the next 24 hours before the forecast “quiets down” in the precip department. Better rain chances likely remaining to the E of all Stations.
- Excessive heat concerns (90+ F) to continue throughout this week.
- No active tropical threats to SE TX at this time.
- No signals for fog impacting stations moving forward.
- Precip pattern looks to turn slightly less active heading into next week.



**Radar/NWS Alerts: 3:30 PM CT**

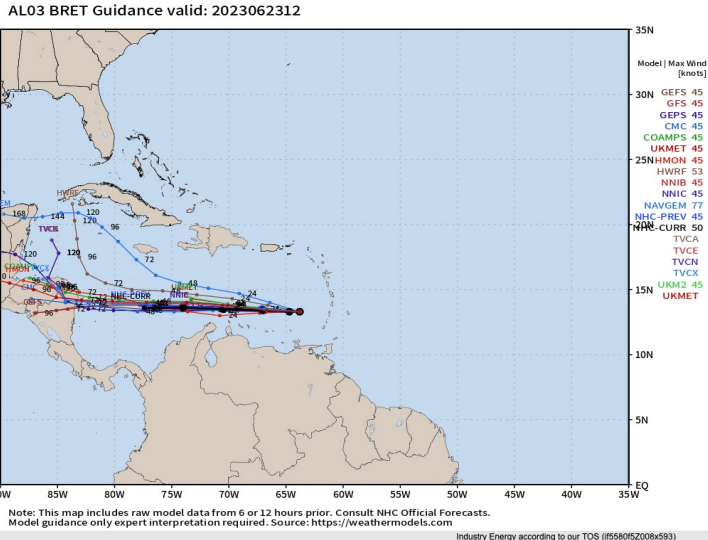


As always, please do not hesitate to reach out to us with any forecast questions via the chat option on the Weather Porthole or our on-call number, **(317)-560-8122** press 1 for forecast questions.

# Houston Pilots Tropical Update



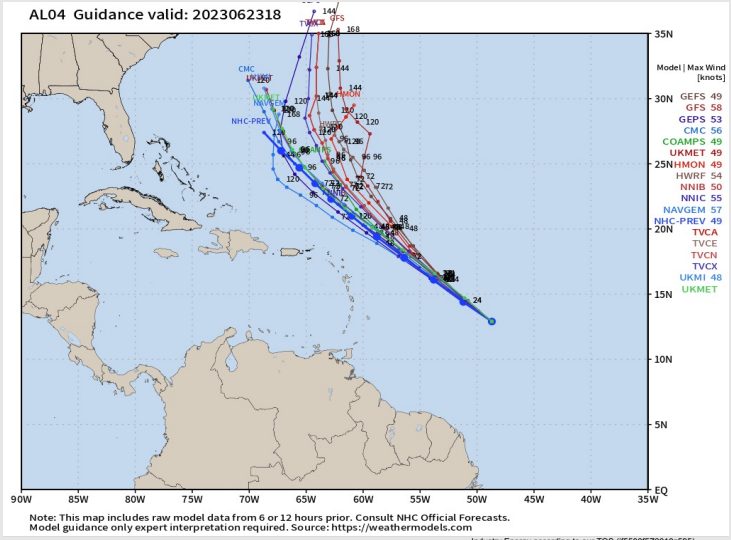
## Tropical Storm Bret Next 7 Days



No tropical activity anticipated over the next 10 days for SE TX.

Higher than average confidence on Bret working through Central America in ~5 days from now.

## Tropical Storm Cindy Next 7 Days

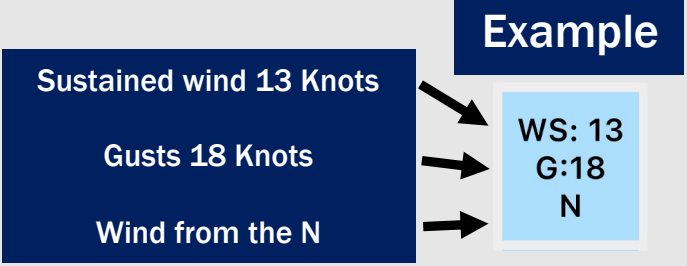


Higher than average confidence on Cindy staying in the Atlantic and not being a concern for the Gulf.

No other areas of interest being noted across the Atlantic/Gulf.



# Houston Pilots Wind Chart



| Time Knots        | Fri 2pm | Fri 3pm | Fri 4pm | Fri 5pm | Fri 6pm | Fri 7pm | Fri 8pm | Fri 9pm | Fri 10pm | Fri 11pm | Sat 12am | Sat 1am | Sat 2am | Sat 3am | Sat 4am | Sat 5am | Sat 6am | Sat 7am | Sat 8am | Sat 9am | Sat 10am | Sat 11am | Sat 12pm | Sat 1pm | Sat 2pm | Sat 3pm | Sat 4pm | Sat 5pm | Sat 6pm | Sat 7pm | Sat 8pm |
|-------------------|---------|---------|---------|---------|---------|---------|---------|---------|----------|----------|----------|---------|---------|---------|---------|---------|---------|---------|---------|---------|----------|----------|----------|---------|---------|---------|---------|---------|---------|---------|---------|
| 610 Bridge        | 6       | 7       | 7       | 8       | 9       | 9       | 9       | 8       | 7        | 6        | 5        | 6       | 5       | 4       | 4       | 4       | 4       | 4       | 5       | 6       | 7        | 7        | 7        | 7       | 8       | 8       | 8       | 10      | 11      | 11      | 10      |
|                   | 8       | 9       | 10      | 11      | 13      | 13      | 12      | 11      | 10       | 9        | 8        | 9       | 8       | 7       | 7       | 6       | 5       | 6       | 7       | 8       | 10       | 11       | 10       | 10      | 11      | 11      | 11      | 12      | 13      | 14      | 14      |
| Kinder 1          | 6       | 7       | 8       | 8       | 9       | 9       | 9       | 8       | 7        | 6        | 5        | 6       | 5       | 4       | 4       | 4       | 4       | 4       | 4       | 6       | 7        | 7        | 7        | 7       | 8       | 8       | 9       | 10      | 11      | 11      | 10      |
|                   | 8       | 9       | 10      | 11      | 13      | 13      | 12      | 11      | 10       | 9        | 8        | 9       | 8       | 7       | 7       | 5       | 5       | 6       | 7       | 8       | 10       | 10       | 10       | 10      | 11      | 11      | 11      | 12      | 13      | 14      | 14      |
| Greens Bayou      | 7       | 8       | 8       | 9       | 10      | 9       | 8       | 7       | 6        | 5        | 6        | 5       | 4       | 4       | 3       | 4       | 4       | 4       | 6       | 7       | 7        | 7        | 7        | 7       | 8       | 9       | 10      | 11      | 11      | 10      |         |
|                   | 8       | 9       | 10      | 11      | 13      | 13      | 12      | 11      | 10       | 9        | 8        | 9       | 8       | 7       | 6       | 5       | 5       | 6       | 7       | 8       | 10       | 10       | 10       | 10      | 10      | 11      | 12      | 12      | 14      | 15      | 14      |
| Shell Crude       | 7       | 8       | 8       | 9       | 10      | 10      | 8       | 8       | 7        | 6        | 5        | 6       | 5       | 5       | 4       | 3       | 4       | 4       | 5       | 6       | 7        | 7        | 7        | 8       | 8       | 9       | 10      | 11      | 12      | 11      | 10      |
|                   | 9       | 10      | 11      | 12      | 13      | 14      | 12      | 11      | 10       | 9        | 8        | 9       | 8       | 7       | 6       | 5       | 5       | 7       | 7       | 8       | 10       | 10       | 10       | 10      | 11      | 11      | 12      | 13      | 14      | 15      | 14      |
| Lynchburg Ferries | 7       | 8       | 8       | 9       | 10      | 10      | 9       | 8       | 7        | 6        | 6        | 6       | 5       | 5       | 4       | 4       | 5       | 5       | 7       | 7       | 8        | 8        | 8        | 8       | 8       | 9       | 10      | 11      | 12      | 12      | 11      |
|                   | 9       | 10      | 11      | 12      | 13      | 14      | 12      | 12      | 11       | 10       | 9        | 9       | 8       | 7       | 7       | 6       | 6       | 7       | 7       | 8       | 10       | 10       | 10       | 10      | 11      | 12      | 13      | 14      | 15      | 15      | 14      |
| Exxon 3           | 8       | 9       | 10      | 10      | 11      | 11      | 10      | 9       | 8        | 7        | 7        | 7       | 6       | 6       | 5       | 5       | 5       | 5       | 6       | 7       | 8        | 8        | 8        | 8       | 9       | 10      | 11      | 11      | 13      | 13      | 11      |
|                   | 9       | 11      | 11      | 13      | 14      | 14      | 13      | 12      | 11       | 10       | 9        | 9       | 8       | 8       | 7       | 7       | 7       | 7       | 7       | 9       | 10       | 10       | 10       | 10      | 12      | 13      | 14      | 15      | 16      | 16      | 15      |
| Morgans Point     | 9       | 11      | 11      | 12      | 13      | 13      | 11      | 11      | 10       | 8        | 8        | 8       | 7       | 7       | 7       | 6       | 6       | 6       | 7       | 8       | 9        | 9        | 9        | 10      | 11      | 12      | 13      | 14      | 14      | 14      | 13      |
|                   | 10      | 12      | 13      | 14      | 15      | 15      | 14      | 13      | 12       | 11       | 10       | 10      | 9       | 9       | 9       | 8       | 8       | 8       | 8       | 9       | 10       | 11       | 11       | 11      | 11      | 13      | 14      | 15      | 16      | 17      | 16      |
| 75/76             | 10      | 12      | 13      | 14      | 15      | 15      | 14      | 13      | 12       | 11       | 10       | 10      | 9       | 9       | 9       | 8       | 8       | 8       | 8       | 9       | 10       | 11       | 11       | 11      | 11      | 13      | 14      | 15      | 16      | 16      | 16      |
|                   | 11      | 13      | 14      | 15      | 17      | 17      | 15      | 14      | 13       | 12       | 11       | 11      | 11      | 10      | 10      | 9       | 9       | 9       | 10      | 11      | 11       | 11       | 11       | 12      | 12      | 14      | 15      | 16      | 17      | 18      | 18      |
| 63/64             | 10      | 12      | 12      | 13      | 16      | 15      | 14      | 13      | 12       | 11       | 11       | 11      | 10      | 10      | 9       | 9       | 9       | 9       | 10      | 10      | 11       | 11       | 11       | 11      | 13      | 14      | 14      | 15      | 16      | 16      | 17      |
|                   | 11      | 13      | 13      | 14      | 17      | 16      | 15      | 14      | 13       | 12       | 12       | 12      | 11      | 11      | 10      | 10      | 10      | 10      | 10      | 11      | 11       | 11       | 12       | 12      | 13      | 14      | 15      | 16      | 18      | 18      | 18      |
| 51/52             | 9       | 12      | 11      | 12      | 15      | 14      | 13      | 12      | 11       | 11       | 11       | 10      | 10      | 10      | 9       | 9       | 9       | 9       | 10      | 10      | 11       | 11       | 11       | 11      | 12      | 13      | 14      | 15      | 15      | 15      |         |
|                   | 10      | 13      | 12      | 13      | 16      | 15      | 14      | 13      | 12       | 12       | 12       | 11      | 11      | 11      | 10      | 10      | 10      | 10      | 10      | 11      | 11       | 11       | 12       | 13      | 14      | 15      | 15      | 17      | 17      | 17      |         |
| 37/38             | 9       | 11      | 10      | 11      | 13      | 12      | 12      | 11      | 10       | 11       | 10       | 10      | 9       | 9       | 9       | 8       | 8       | 8       | 8       | 9       | 10       | 10       | 11       | 11      | 12      | 12      | 13      | 14      | 14      | 14      |         |
|                   | 10      | 12      | 11      | 12      | 15      | 13      | 13      | 12      | 11       | 12       | 11       | 11      | 10      | 10      | 10      | 9       | 9       | 9       | 10      | 11      | 11       | 12       | 12       | 12      | 13      | 13      | 14      | 15      | 15      | 15      |         |
| 25/26             | 8       | 9       | 9       | 10      | 12      | 10      | 10      | 9       | 9        | 9        | 9        | 9       | 9       | 8       | 8       | 8       | 8       | 8       | 8       | 9       | 10       | 10       | 11       | 10      | 11      | 11      | 11      | 12      | 12      | 12      |         |
|                   | 9       | 10      | 10      | 11      | 13      | 11      | 11      | 10      | 10       | 11       | 10       | 10      | 9       | 9       | 9       | 9       | 9       | 9       | 9       | 10      | 11       | 11       | 11       | 12      | 12      | 13      | 13      | 13      | 13      | 13      |         |
| 11/12             | 8       | 9       | 9       | 9       | 11      | 9       | 9       | 9       | 9        | 9        | 9        | 9       | 9       | 8       | 8       | 8       | 8       | 8       | 8       | 9       | 9        | 9        | 10       | 9       | 10      | 10      | 11      | 11      | 11      | 12      |         |
|                   | 8       | 10      | 10      | 10      | 12      | 11      | 11      | 10      | 10       | 11       | 10       | 10      | 10      | 9       | 9       | 9       | 9       | 9       | 9       | 10      | 11       | 11       | 11       | 11      | 12      | 12      | 12      | 13      | 13      | 13      |         |
| 1 & 2 Bravo       | 7       | 8       | 9       | 9       | 11      | 10      | 11      | 11      | 10       | 11       | 11       | 10      | 10      | 10      | 10      | 10      | 10      | 9       | 9       | 10      | 10       | 10       | 10       | 10      | 10      | 11      | 11      | 12      | 12      | 13      |         |
|                   | 8       | 9       | 10      | 10      | 12      | 11      | 11      | 12      | 11       | 11       | 11       | 11      | 11      | 11      | 11      | 11      | 11      | 10      | 10      | 10      | 10       | 11       | 11       | 11      | 11      | 11      | 11      | 12      | 13      | 14      |         |

**NOTE: This is automated data that may/may not agree with the official BAM thinking that's found on the daily slides. This data should be used as a guide only**

## Forecast Discussion

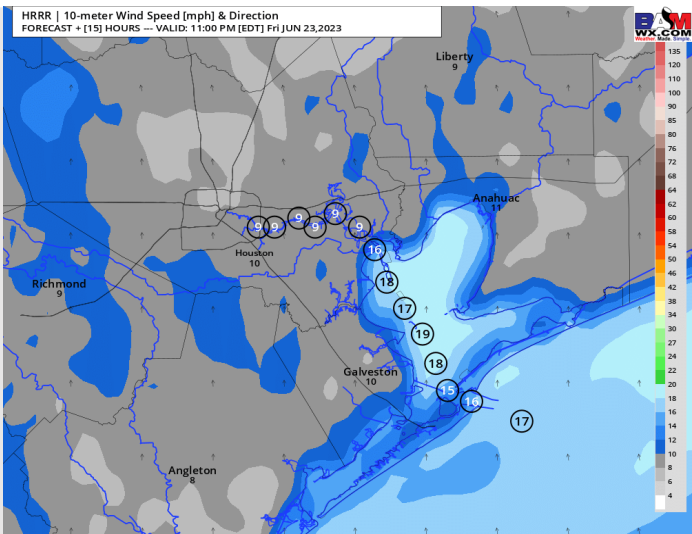
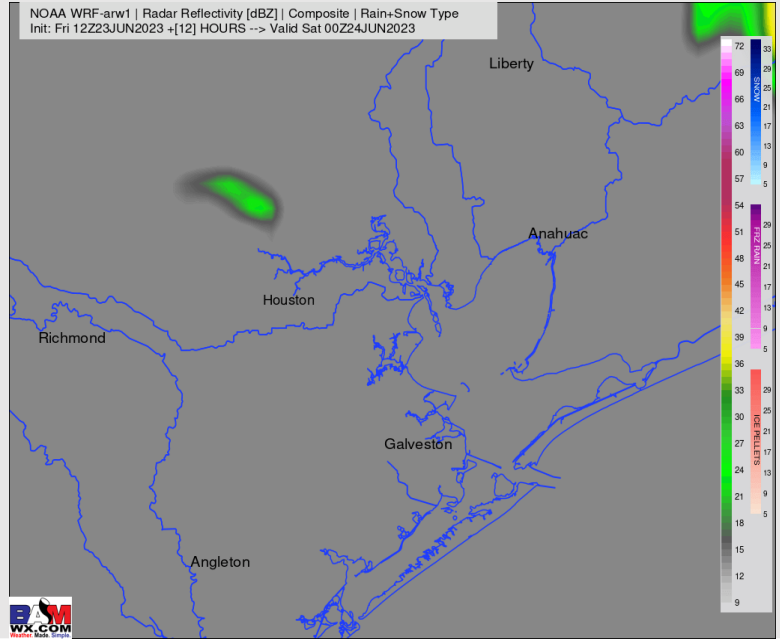
**Precip:** Slightly lower confidence on the evolution of the forecast for the rest of the day given a few wrinkles to watch. After what looks like a quieter mid-day, a 10-20% shot for showers/thunderstorms will work into the picture closer to the late afternoon / evening hours, although better rain chances are expected to remain to the E of all Stations. With any stronger cells, wind gusts will be the primary risks for severe potential.

**Wind:** Winds out of the S/SE will be at 4 – 9 kts N of Morgan’s Point while winds S of Morgan’s Point will be 12 - 17 kts for the remainder of the day. **Any strong storms hold risks for gusts of 20-30+ knots.**

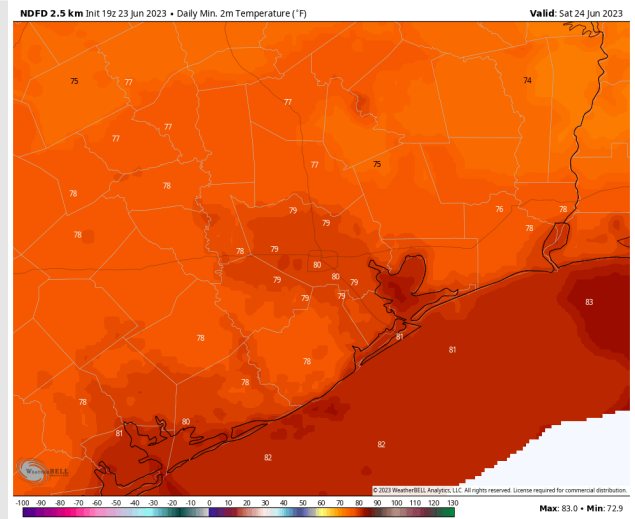
**Temps:** Low temps tonight will be in the low 80s F for Stations S of Morgan’s Point and in the upper 70s near 80 F N of Morgan’s Point.

**Visibility:** Not anticipating any visibility concerns at this time.

## Precip Image: 7 PM CT



Wind Speed:  
10 PM CT



Low Temps  
Sat AM



# Houston Pilots: Sat. 6/24/2023



## Forecast Discussion

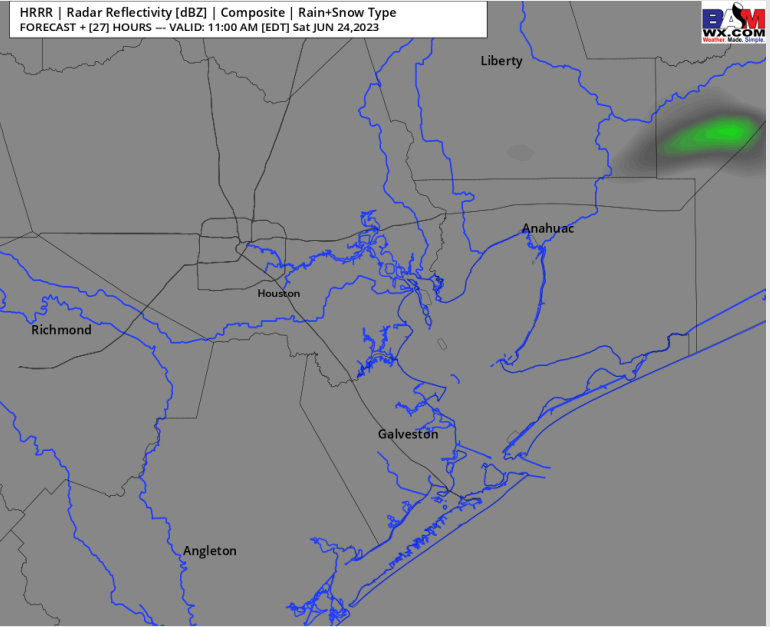
**Precip:** Favoring dry conditions for most of the day Saturday, however a 10-20% chance for pop-up shower/thunderstorms will be in play between 7 – 11 AM. Better rain chances will likely remain to the E of all stations, however chances in the AM will be non-0.

**Wind:** Winds out of the S/SE will be 5-10 kts for all Stations during the early morning hours. After 11 AM, winds for all stations will increase to 13-18 kts for the rest of the day with gusts 18-23 kts for Stations S of Morgan's Point.

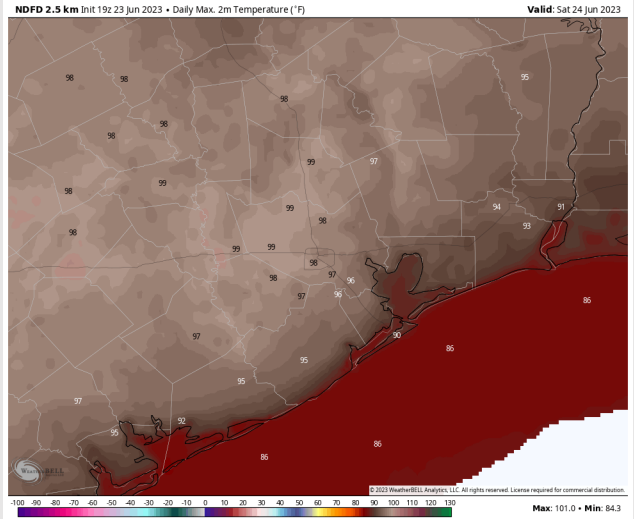
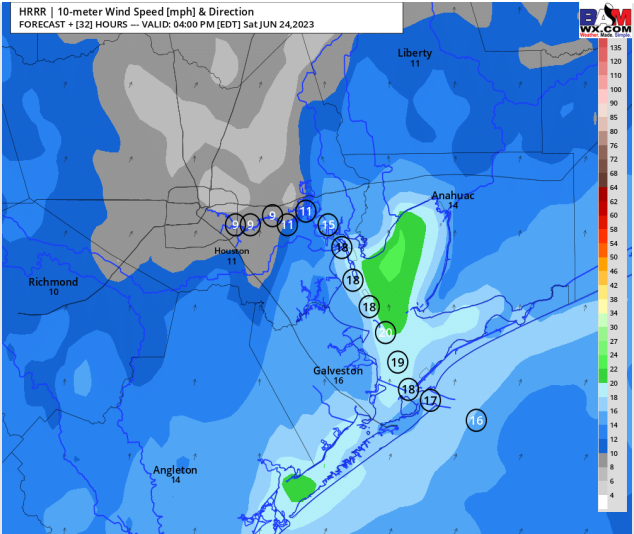
**Temps:** High temperatures Saturday will be in the mid/upper 80s F near the Boarding Station, in the low/mid 90s F for all other stations S of Morgan's Point, and in the mid/upper 90s F for stations N of Morgan's Point.

**Visibility:** Not anticipating any visibility concerns at this time.

## Precip Image: 10 AM CT



Wind Speed:  
3 PM CT



High Temps  
Saturday

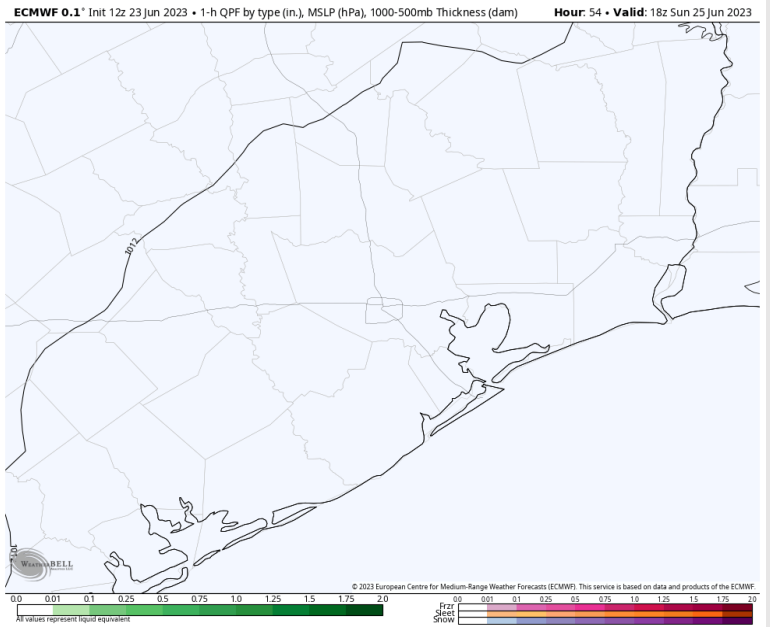
# Houston Pilots: Sun. 6/25/2023



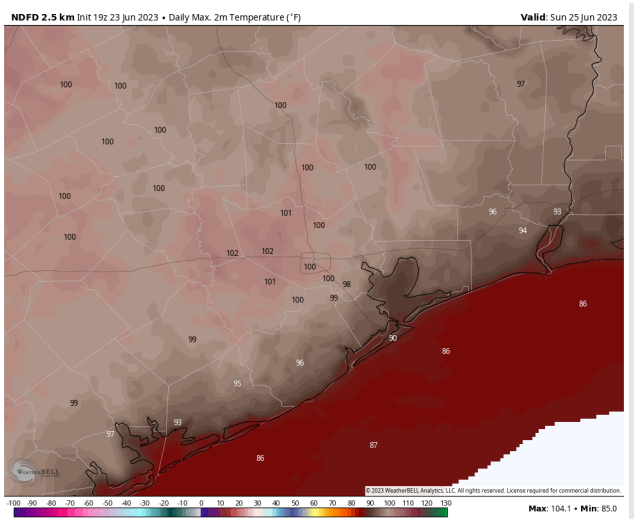
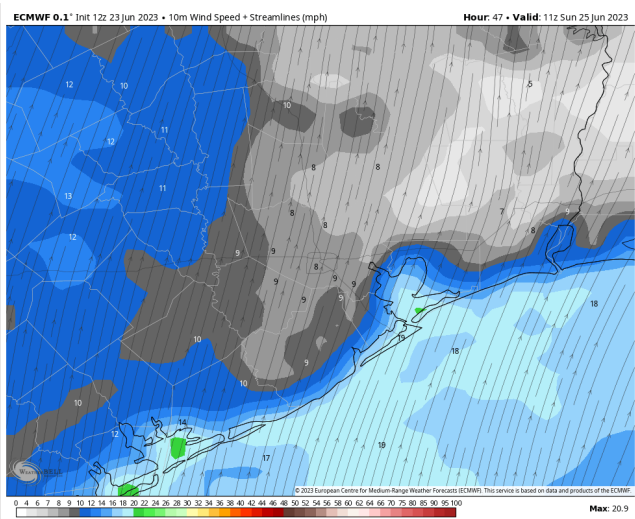
## Forecast Discussion

- Precip:** Favoring dry conditions throughout the day on Sunday
- Wind:** Winds out of the SW will be at 8 – 13 kts N of Morgan’s Point throughout the day, while winds S of Morgan’s Point will be at 11 – 16 kts.
- Temps:** High temps on Sunday will be in the mid 80s F for the Boarding Station, low/mid 90s F S of Morgan’s Point and upper 90s to low 100s F N of Morgan’s Point.
- Visibility:** Not anticipating any visibility concerns at this time.

## Precip Image: 1 PM CT

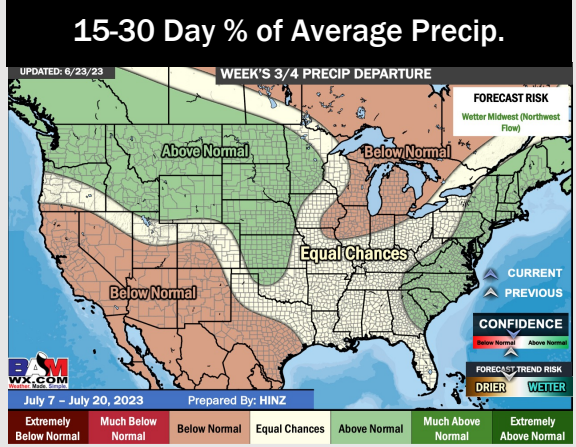
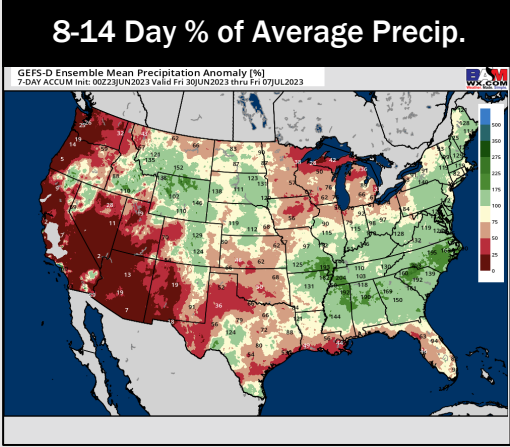
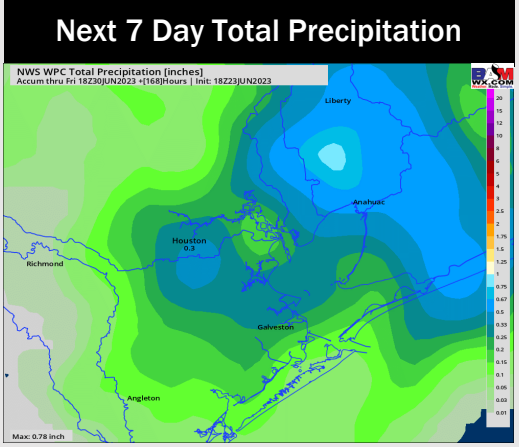
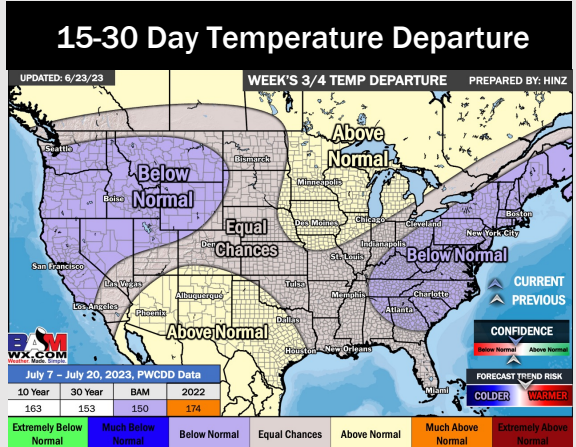
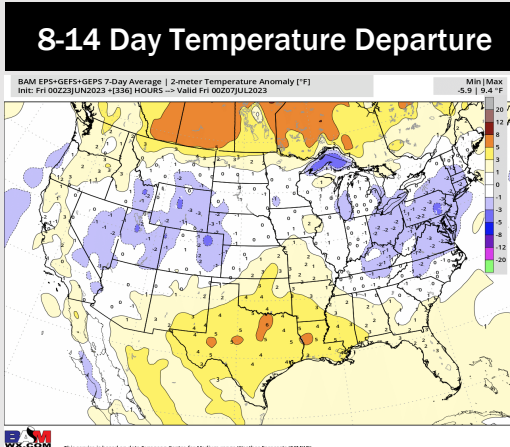
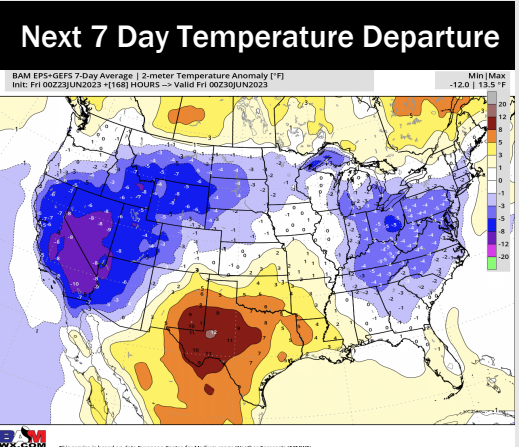


Wind Speed:  
6 AM CT



High Temps  
Sunday

# Houston Pilots: 6/23/23



- Above normal temperatures are favored over the next week. Expecting a few shots of pop-up showers/storms over the next 24 hours followed by a dry stretch.
- Expecting much below normal precipitation chances and above normal temperatures for the week 2 timeframe.
- Above to near normal temperatures and below to near normal chances for precipitation are favored in the weeks ¾ timeframe.