

Houston Pilots Forecast Package

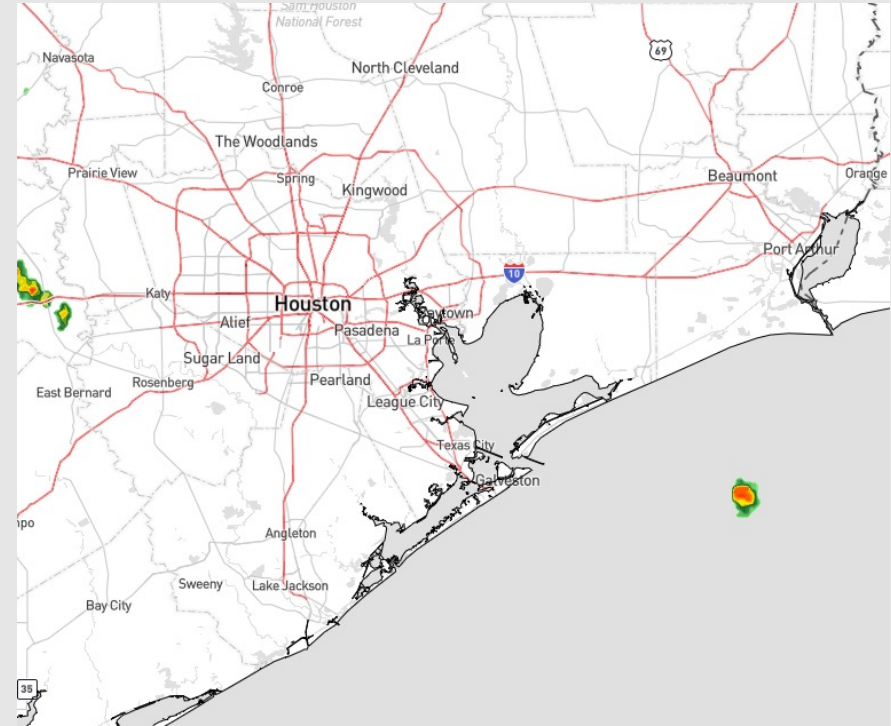


Updated: 5:00 AM CT
Monday, June 5, 2023

Forecaster: Xander Lowry

Weather Headlines

- Showers/thunderstorms will be possible starting this afternoon, with more prolonged chances throughout the day on Tuesday. Anticipating dry conditions starting WED.
- Calmer winds are favored to continue, with occasional periods of winds reaching up to 8 - 12 kts as storms pass through. **Wind gusts MON/TUE will be upwards of 20-25 kts under heavier cells.**
- Wednesday morning there is a chance of fog for stations N of Morgan's Point.
- No tropical threats to monitor.



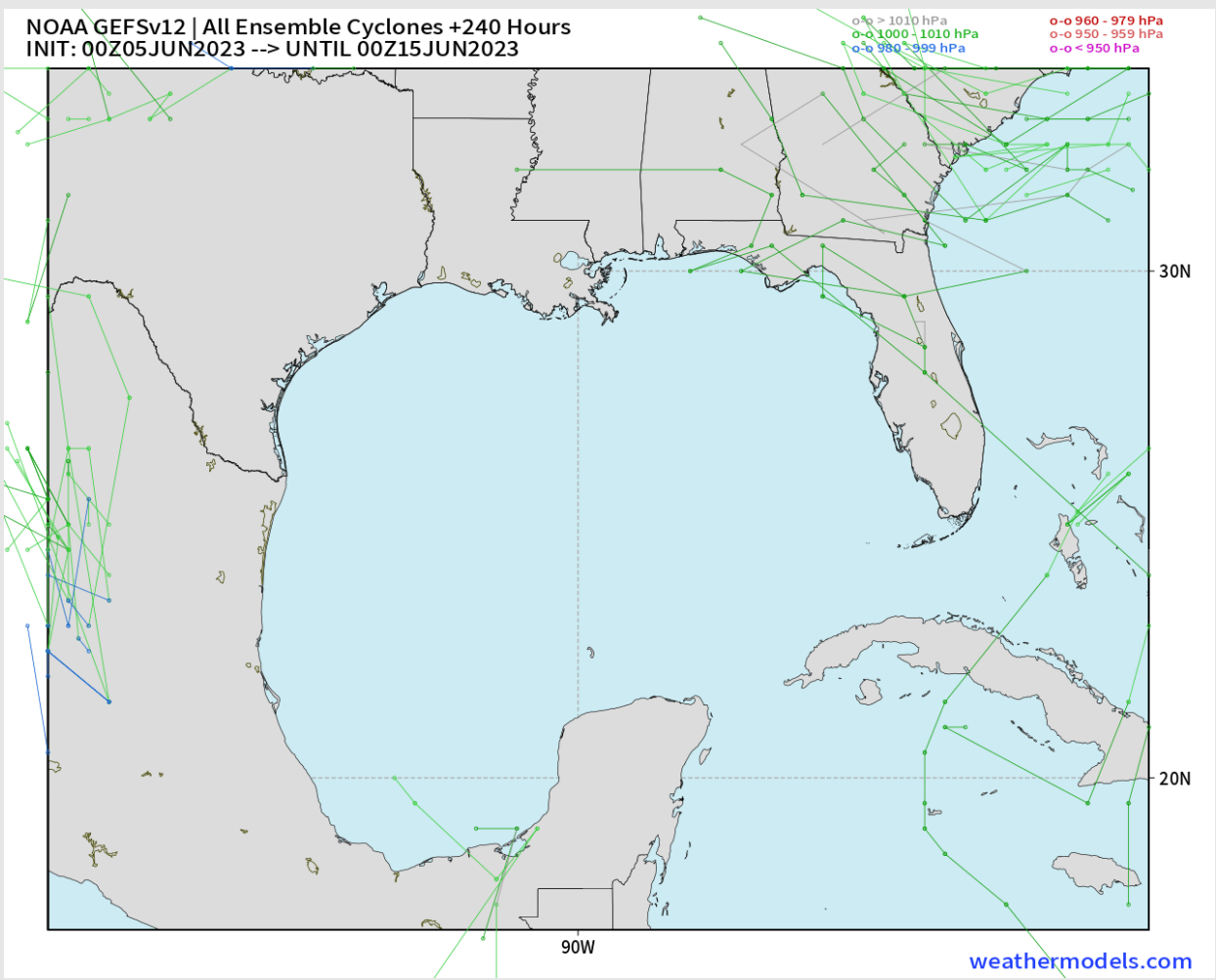
Radar/NWS Alerts: 5:00 AM CT



As always, please do not hesitate to reach out to us with any forecast questions via the chat option on the Weather Porthole or our on-call number, **(317)-560-8122** press 1 for forecast questions.

Houston Pilots Tropical Update

GEFS 10-Day Tracks



No tropical activity anticipated over the next 7-10 days.

Houston Pilots Visibility Chart (miles)



Forecast Confidence



Time	Mon 3am	Mon 4am	Mon 5am	Mon 6am	Mon 7am	Mon 8am	Mon 9am	Mon 10am	Mon 11am	Mon 12pm	Mon 1pm	Mon 2pm	Mon 3pm	Mon 4pm	Mon 5pm	Mon 6pm	Mon 7pm	Mon 8pm	Mon 9pm	Mon 10pm	Mon 11pm	Tue 12am	Tue 1am	Tue 2am	Tue 3am	Tue 4am	Tue 5am	Tue 6am	Tue 7am	Tue 8am	Tue 9am	Tue 10am	Tue 11am	Tue 12pm	Tue 1pm	Tue 2pm	
610 Bridge	10	10	10	10	10	10	10	10	10	10	10	10	10	10	10	10	10	10	10	10	10	10	10	10	10	10	10	10	9	10	10	10	10	10	10	10	
Kinder 1	10	10	10	10	10	10	10	10	10	10	10	10	10	10	10	10	10	10	10	10	10	10	10	10	10	10	10	10	9	10	10	10	10	10	10	10	
Greens Bayou	10	10	10	10	10	10	10	10	10	10	10	10	10	10	10	10	10	10	10	10	10	10	10	10	10	10	10	10	9	10	10	10	10	10	10	10	
Shell Crude	10	10	10	10	10	10	10	10	10	10	10	10	10	10	10	10	10	10	10	10	10	10	10	10	10	10	10	10	9	10	10	10	10	10	10	10	
Lynchburg Ferries	10	10	10	10	10	10	10	10	10	10	10	10	10	10	10	10	10	10	10	10	10	10	10	10	10	10	10	10	9	10	10	10	10	10	10	10	
Exxon 3	10	10	10	10	10	10	10	10	10	10	10	10	10	10	10	10	10	10	10	10	10	10	10	10	10	10	10	10	9	10	10	10	10	10	10	10	
Morgans Point	10	10	10	10	10	10	10	10	10	10	10	10	10	10	10	10	10	10	10	10	10	10	10	10	10	10	10	10	9	10	10	10	10	10	10	10	
75/76	10	10	10	10	10	10	10	10	10	10	10	10	10	10	10	10	10	10	10	10	10	10	10	10	10	10	10	10	9	10	10	10	10	10	10	10	
63/64	10	10	10	10	10	10	10	10	10	10	10	10	10	10	10	10	10	10	10	10	10	10	10	10	10	10	10	10	10	10	10	10	10	10	10	10	
51/52	10	10	10	10	10	10	10	10	10	10	10	10	10	10	10	10	10	10	10	10	10	10	10	10	10	10	10	10	10	10	10	10	10	10	10	10	
37/38	10	10	10	10	10	10	10	10	10	10	10	10	10	10	10	10	10	10	10	10	10	10	10	10	10	10	10	10	10	10	10	10	10	10	10	10	
25/26	10	10	10	10	10	10	10	10	10	10	10	10	10	10	10	10	10	10	10	10	10	10	10	10	10	10	10	10	10	10	10	10	10	10	10	10	10
11/12	10	10	10	10	10	10	10	10	10	10	10	10	10	10	10	10	10	10	10	10	10	10	10	10	10	10	10	10	10	10	10	10	10	10	10	10	10
1 & 2 Bravo	10	10	10	10	10	10	10	10	10	10	10	10	10	10	10	10	10	10	10	10	10	10	10	10	10	10	10	10	10	10	10	10	10	10	10	10	10

NOTE: This is automated data that may/may not agree with the official BAM thinking that's found on the daily slides or special visibility report slides. This data should be used as a guide only

Houston Pilots Wind Chart



Forecast Confidence



Example

Sustained wind 13 Knots
Gusts 18 Knots
Wind from the N

WS: 13
G:18
N

Time Knots	Mon 3am	Mon 4am	Mon 5am	Mon 6am	Mon 7am	Mon 8am	Mon 9am	Mon 10am	Mon 11am	Mon 12pm	Mon 1pm	Mon 2pm	Mon 3pm	Mon 4pm	Mon 5pm	Mon 6pm	Mon 7pm	Mon 8pm	Mon 9pm	Mon 10pm	Mon 11pm	Tue 12am	Tue 1am	Tue 2am	Tue 3am	Tue 4am	Tue 5am	Tue 6am	Tue 7am	Tue 8am	Tue 9am	Tue 10am	Tue 11am	Tue 12pm	Tue 1pm	Tue 2pm
610 Bridge	1 2 N	1 2 NW	1 2 NNW	1 2 NNW	2 3 NNW	2 3 NNW	2 3 NNW	3 4 N	3 4 NNE	3 4 NE	3 4 E	3 4 ESE	3 4 ESE	4 5 SE	4 5 SSE	4 5 SSW	4 5 W	4 5 WSW	4 5 ENE	4 5 NNE	4 5 NE	4 5 NNE	4 5 NE	4 5 NE	4 5 E	4 5 W	4 5 ENE	4 5 NNE	4 5 NNE	4 5 NNE	4 5 NE	4 5 ENE	4 5 ENE	4 5 ENE	4 5 E	4 5 ENE
Kinder 1	1 2 N	1 2 NNW	1 2 NNW	1 2 NNW	2 3 NNW	2 3 NNW	2 3 NNW	3 4 N	3 4 NNE	3 4 NE	3 4 ENE	3 4 ESE	3 4 ESE	4 5 SE	4 5 SSE	4 5 SSW	4 5 W	4 5 WSW	4 5 ENE	4 5 NNE	4 5 NE	4 5 NNE	4 5 NE	4 5 NE	4 5 E	4 5 W	4 5 ENE	4 5 NNE	4 5 NNE	4 5 NNE	4 5 NE	4 5 ENE	4 5 ENE	4 5 ENE	4 5 E	4 5 ENE
Greens Bayou	1 2 N	1 2 NNW	1 2 NNW	1 2 NNW	2 3 NNW	2 3 NNW	2 3 NNW	3 4 N	3 4 NNE	3 4 NE	3 4 ENE	3 4 ESE	3 4 ESE	4 5 SE	4 5 SSE	4 5 SSW	4 5 W	4 5 WSW	4 5 ENE	4 5 NNE	4 5 NE	4 5 NNE	4 5 NE	4 5 NE	4 5 E	4 5 W	4 5 ENE	4 5 NNE	4 5 NNE	4 5 NNE	4 5 NE	4 5 ENE	4 5 ENE	4 5 ENE	4 5 E	4 5 ENE
Shell Crude	1 2 N	1 2 NNW	1 2 NNW	1 2 NNW	2 3 NNW	2 3 NNW	2 3 NNW	3 4 N	3 4 NNE	3 4 NE	3 4 ENE	3 4 ESE	3 4 ESE	4 5 SE	4 5 SSE	4 5 SSW	4 5 W	4 5 WSW	4 5 ENE	4 5 NNE	4 5 NE	4 5 NNE	4 5 NE	4 5 NE	4 5 E	4 5 W	4 5 ENE	4 5 NNE	4 5 NNE	4 5 NNE	4 5 NE	4 5 ENE	4 5 ENE	4 5 ENE	4 5 E	4 5 ENE
Lynchburg Ferries	2 3 N	2 3 NNW	2 3 NNW	2 3 NNW	3 4 NNW	3 4 NNW	3 4 NNW	4 5 N	4 5 NNE	4 5 NE	4 5 ENE	4 5 ESE	4 5 ESE	5 6 SE	5 6 SSE	5 6 SSW	5 6 W	5 6 WSW	5 6 ENE	5 6 NNE	5 6 NE	5 6 NNE	5 6 NE	5 6 NE	5 6 E	5 6 W	5 6 ENE	5 6 NNE	5 6 NNE	5 6 NNE	5 6 NE	5 6 ENE	5 6 ENE	5 6 ENE	5 6 E	5 6 ENE
Exxon 3	2 3 N	2 3 NNW	2 3 NNW	2 3 NNW	3 4 NNW	3 4 NNW	3 4 NNW	4 5 N	4 5 NNE	4 5 NE	4 5 ENE	4 5 ESE	4 5 ESE	5 6 SE	5 6 SSE	5 6 SSW	5 6 W	5 6 WSW	5 6 ENE	5 6 NNE	5 6 NE	5 6 NNE	5 6 NE	5 6 NE	5 6 E	5 6 W	5 6 ENE	5 6 NNE	5 6 NNE	5 6 NNE	5 6 NE	5 6 ENE	5 6 ENE	5 6 ENE	5 6 E	5 6 ENE
Morgans Point	2 3 WNW	2 3 NNW	2 3 NNW	2 3 NNW	3 4 NNW	3 4 NNW	3 4 NNW	4 5 N	4 5 NNE	4 5 NE	4 5 ENE	4 5 ESE	4 5 ESE	5 6 SE	5 6 SSE	5 6 SSW	5 6 W	5 6 WSW	5 6 ENE	5 6 NNE	5 6 NE	5 6 NNE	5 6 NE	5 6 NE	5 6 E	5 6 W	5 6 ENE	5 6 NNE	5 6 NNE	5 6 NNE	5 6 NE	5 6 ENE	5 6 ENE	5 6 ENE	5 6 E	5 6 ENE
75/76	3 4 E	3 4 WNW	3 4 NNW	3 4 NNW	4 5 NNW	4 5 NNW	4 5 NNW	5 6 N	5 6 NNE	5 6 NE	5 6 ENE	5 6 ESE	5 6 ESE	6 7 SE	6 7 SSE	6 7 SSW	6 7 W	6 7 WSW	6 7 ENE	6 7 NNE	6 7 NE	6 7 NNE	6 7 NE	6 7 NE	6 7 E	6 7 W	6 7 ENE	6 7 NNE	6 7 NNE	6 7 NNE	6 7 NE	6 7 ENE	6 7 ENE	6 7 ENE	6 7 E	6 7 ENE
63/64	4 4 NNE	4 4 S	4 4 NNW	4 4 NNW	5 5 NNW	5 5 NNW	5 5 NNW	6 6 N	6 6 NE	6 6 NE	6 6 NE	6 6 E	6 6 ESE	6 6 SE	6 6 SSE	6 6 SSW	6 6 W	6 6 WSW	6 6 ENE	6 6 NNE	6 6 NE	6 6 NNE	6 6 NE	6 6 NE	6 6 E	6 6 W	6 6 ENE	6 6 NNE	6 6 NNE	6 6 NNE	6 6 NE	6 6 ENE	6 6 ENE	6 6 ENE	6 6 E	6 6 ENE
51/52	3 4 NNE	3 4 ENE	3 4 NNW	3 4 NNW	4 5 NNW	4 5 NNW	4 5 NNW	5 6 N	5 6 NNE	5 6 NE	5 6 ENE	5 6 ESE	5 6 ESE	6 7 SE	6 7 SSE	6 7 SSW	6 7 W	6 7 WSW	6 7 ENE	6 7 NNE	6 7 NE	6 7 NNE	6 7 NE	6 7 NE	6 7 E	6 7 W	6 7 ENE	6 7 NNE	6 7 NNE	6 7 NNE	6 7 NE	6 7 ENE	6 7 ENE	6 7 ENE	6 7 E	6 7 ENE
37/38	3 3 NNE	3 3 ENE	3 3 NNW	3 3 NNW	4 4 NNW	4 4 NNW	4 4 NNW	5 5 N	5 5 NNE	5 5 NE	5 5 ENE	5 5 ESE	5 5 ESE	6 6 SE	6 6 SSE	6 6 SSW	6 6 W	6 6 WSW	6 6 ENE	6 6 NNE	6 6 NE	6 6 NNE	6 6 NE	6 6 NE	6 6 E	6 6 W	6 6 ENE	6 6 NNE	6 6 NNE	6 6 NNE	6 6 NE	6 6 ENE	6 6 ENE	6 6 ENE	6 6 E	6 6 ENE
25/26	3 3 NE	3 3 SE	3 3 NNW	3 3 NNW	4 4 NNW	4 4 NNW	4 4 NNW	5 5 N	5 5 NNE	5 5 NE	5 5 ENE	5 5 ESE	5 5 ESE	6 6 SE	6 6 SSE	6 6 SSW	6 6 W	6 6 WSW	6 6 ENE	6 6 NNE	6 6 NE	6 6 NNE	6 6 NE	6 6 NE	6 6 E	6 6 W	6 6 ENE	6 6 NNE	6 6 NNE	6 6 NNE	6 6 NE	6 6 ENE	6 6 ENE	6 6 ENE	6 6 E	6 6 ENE
11/12	3 3 NE	3 3 ENE	3 3 NNW	3 3 NNW	4 4 NNW	4 4 NNW	4 4 NNW	5 5 N	5 5 NNE	5 5 NE	5 5 ENE	5 5 ESE	5 5 ESE	6 6 SE	6 6 SSE	6 6 SSW	6 6 W	6 6 WSW	6 6 ENE	6 6 NNE	6 6 NE	6 6 NNE	6 6 NE	6 6 NE	6 6 E	6 6 W	6 6 ENE	6 6 NNE	6 6 NNE	6 6 NNE	6 6 NE	6 6 ENE	6 6 ENE	6 6 ENE	6 6 E	6 6 ENE
1 & 2 Bravo	4 4 NE	4 4 S	4 4 NNW	4 4 NNW	5 5 NNW	5 5 NNW	5 5 NNW	6 6 N	6 6 NNE	6 6 NE	6 6 ENE	6 6 ESE	6 6 ESE	7 7 SE	7 7 SSE	7 7 SSW	7 7 W	7 7 WSW	7 7 ENE	7 7 NNE	7 7 NE	7 7 NNE	7 7 NE	7 7 NE	7 7 E	7 7 W	7 7 ENE	7 7 NNE	7 7 NNE	7 7 NNE	7 7 NE	7 7 ENE	7 7 ENE	7 7 ENE	7 7 E	7 7 ENE

NOTE: This is automated data that may/may not agree with the official BAM thinking that's found on the daily slides or special visibility report slides. This data should be used as a guide only

Forecast Discussion

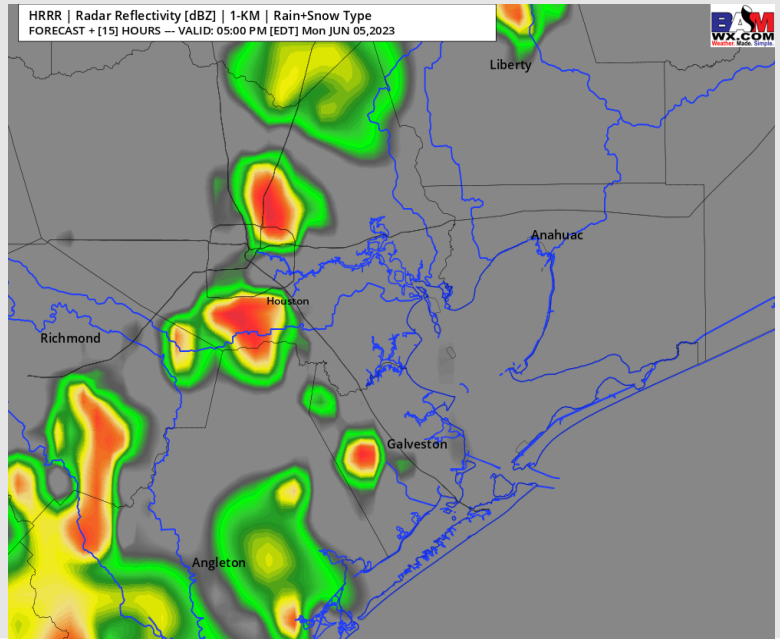
Precip: A very low-end chance for an isolated shower will be possible during the morning hours lasting until 12 PM. After 12 PM, anticipating coverage to increase as showers/storms become more scattered across the area with the biggest risk of storms/showers coming between 4 PM – 6 PM. Beyond 8 PM, storm/shower chances become more isolated with the better coverage remaining to the north of HOU metro.

Wind: Winds will be variable this morning with a tendency to be out of the NW throughout the AM hours before shifting to the SE from 12 – 6 PM. Beyond 6 PM, winds will shift to out of the WSW for the remainder of the evening. Winds speeds N of Morgan's Point will be 4-9 kts throughout the day. Winds S of Morgan's Point will be 5 - 10 kts through 2 PM before increasing to 7-12 kts from 2-8 PM before returning to 5 - 10 kts after 8 PM. **Wind gusts of 20 - 25 kts will be possible under heaviest cells during 12 – 8 PM.**

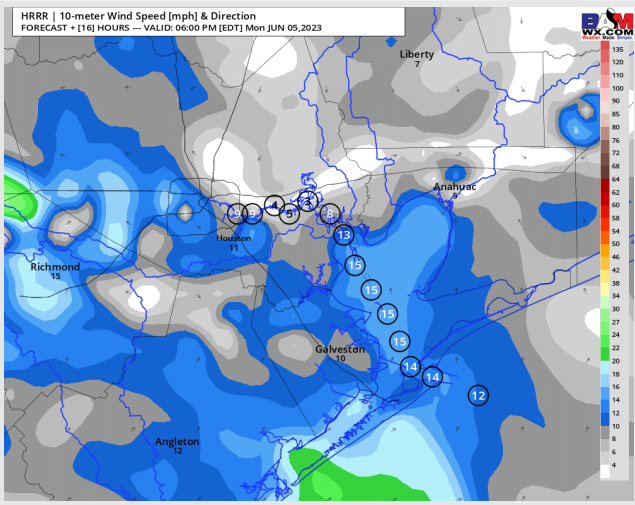
Temps: High temps today will be in the low 80s F for the Boarding Station and in the mid/upper 80s F for all other stations.

Visibility: Under heavier cells visibility can be locally lowered to 0.5 - 1 mile.

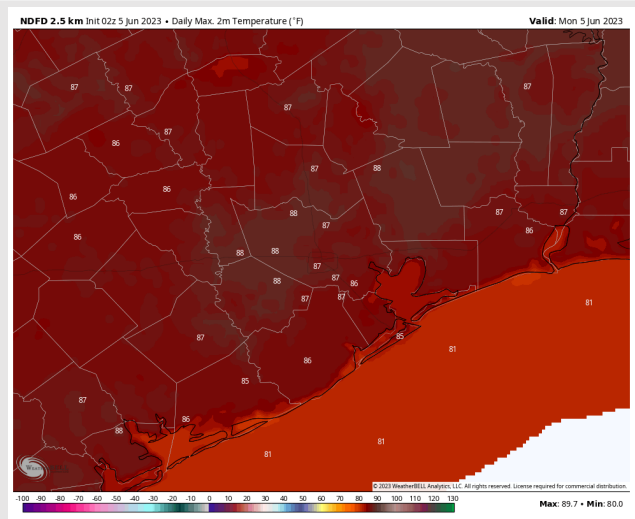
Precip Image: 4 PM CT



**Wind Speed:
5 PM CT**



**High Temps
Today**



Forecast Discussion

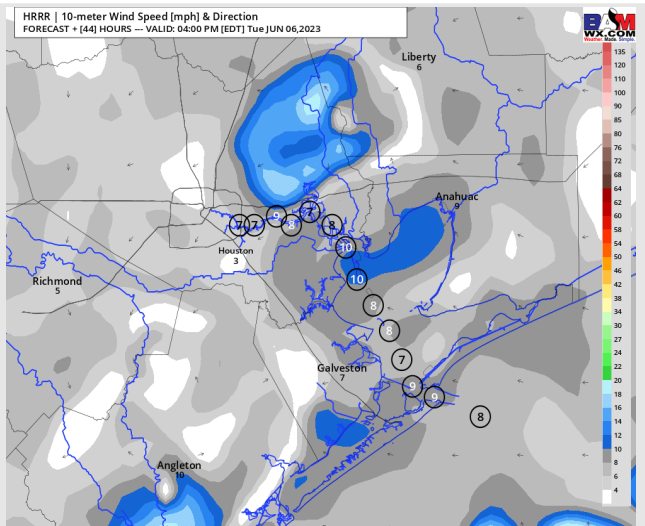
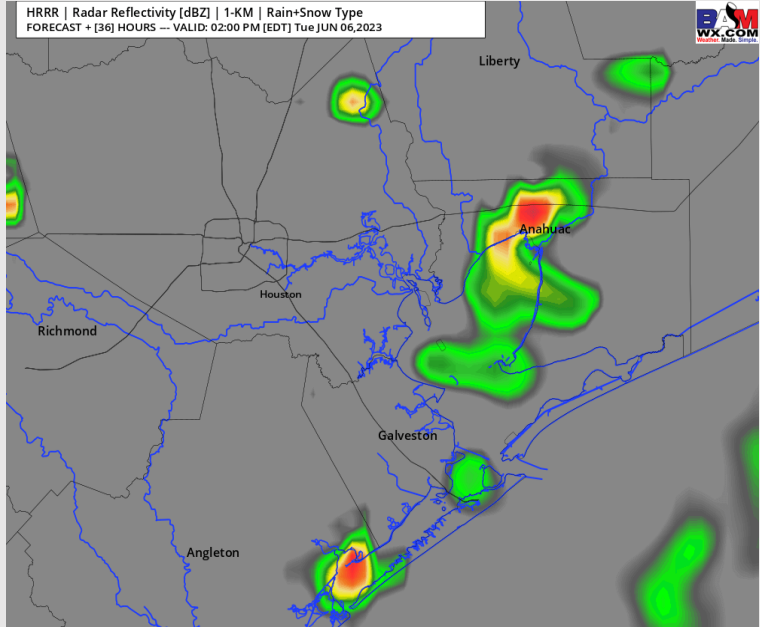
Precip: A 20 - 30% chance for scattered showers/storms will be possible throughout the majority of the day on Tuesday, with largest risk in the early afternoon. Expect chances moving out of the area around 7-8 PM. Anticipating dry conditions after 8 PM

Wind: Favoring winds to start off variable before coming out of the NNW by 5 AM and last through 2 PM. From 2 - 7 PM, anticipating winds to be out of the SE before returning to variable after 7 PM. Winds at all stations will be at 2-7 kts throughout the day. **Expect 15 - 20 kt winds if caught under a heavier cell throughout the day.**

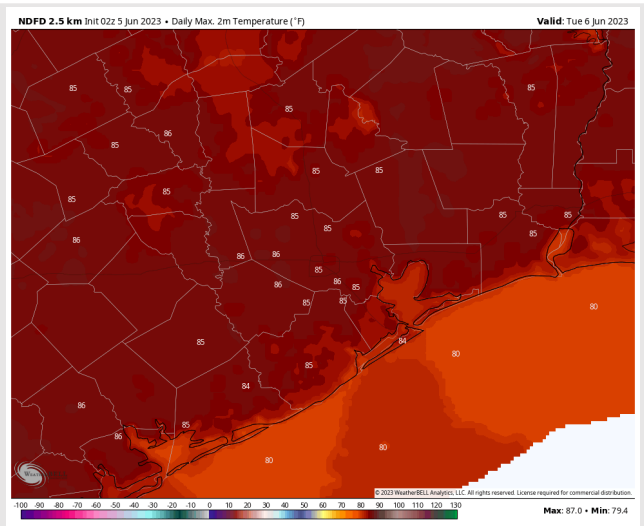
Temps: High temperatures on Tuesday will be in the low 80s F near the boarding station and mid/upper 80s F across all other stations.

Visibility: Not anticipating any visibility concerns at this time.

Precip Image: 1 PM CT



Wind Speed:
8 AM CT



High Temps
Tuesday

Houston Pilots: Wed. 6/7/2023



Forecast Discussion

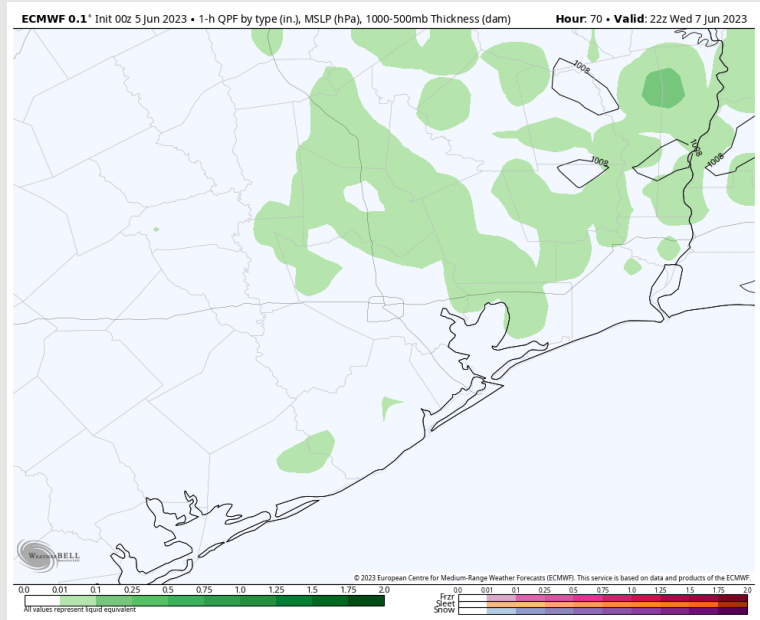
Precip: Anticipating mostly dry conditions on Wednesday, with a 20% chance of showers between 5-8 PM north of Morgan's Point. Better coverage will lie north of HOU metro.

Wind: Winds will be out of the SE in the early morning before turning out of the NW in the afternoon, then in the evening hours turning back to out of the SW. Anticipating speeds of 1-6 kts north of Morgan's Point and 4-9 kts south of Morgan's Point.

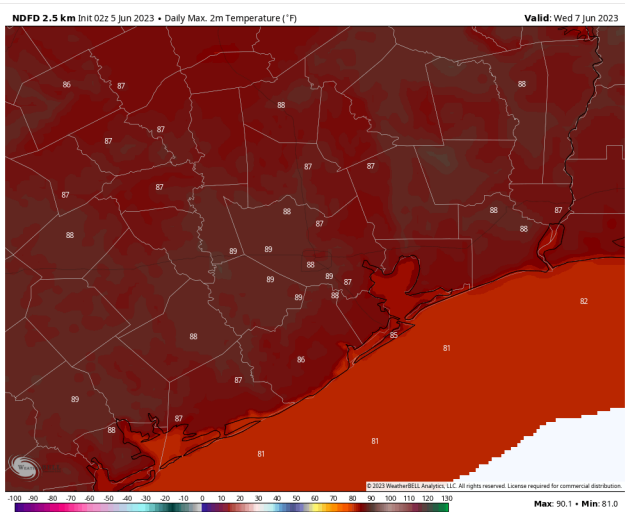
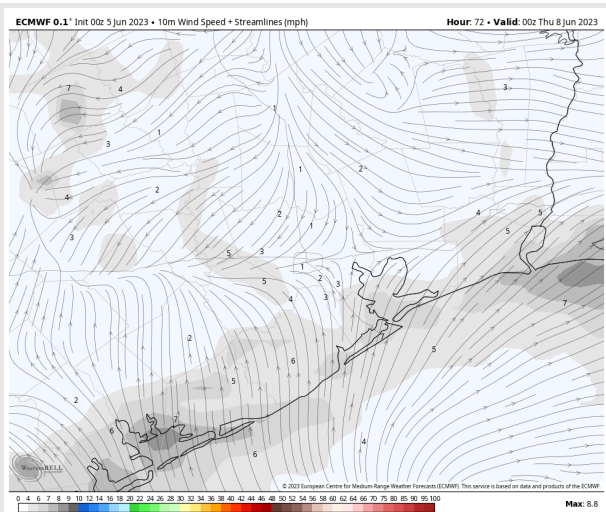
Temps: High temps for Wednesday will be in the low 80s F near the boarding station and mid/upper 80s F at all other stations.

Visibility: Wednesday morning fog could lower visibility to 0.25 mile for stations N of Morgan's point. By 9am this should dissipate, and visibility will return to normal.

Precip Image: 5 PM CT



Wind Speed:
7 PM CT

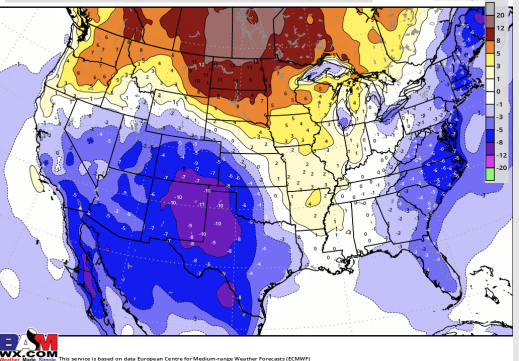


High Temps
Wednesday

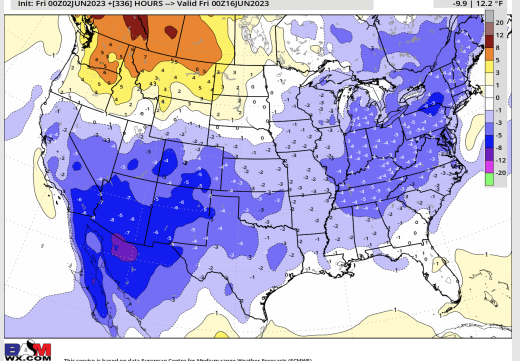
Houston Pilots: 6/5/23



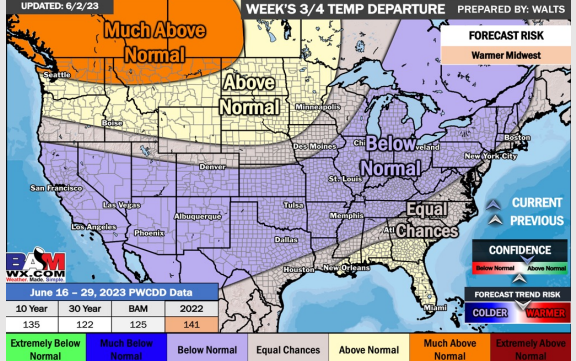
Next 7 Day Temperature Departure



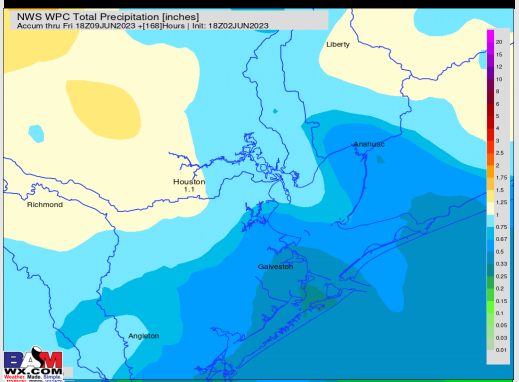
8-14 Day Temperature Departure



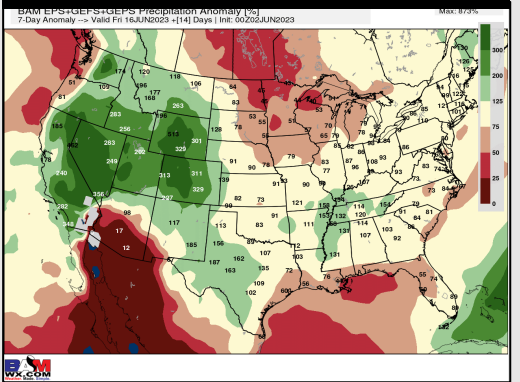
15-30 Day Temperature Departure



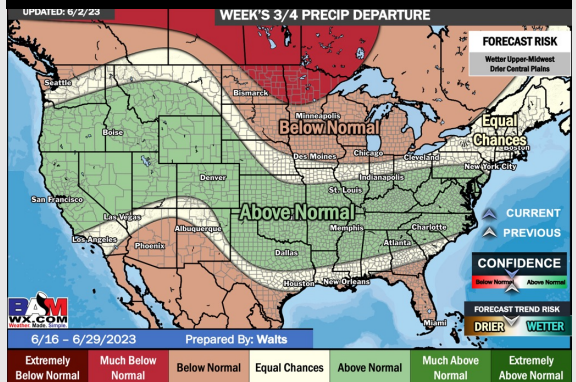
Next 7 Day Total Precipitation



8-14 Day % of Average Precip.



15-30 Day % of Average Precip.



- Watching a few very isolated rain chances over the few days. Favoring slightly below normal temperatures over the next week.
- Expecting below normal precipitation chances and near normal to slightly below normal temperatures for the week 2 timeframe.
- Near normal temperatures and near to below normal chances for precipitation are favored in the weeks 3/4 timeframe.