

Houston Pilots Forecast Package

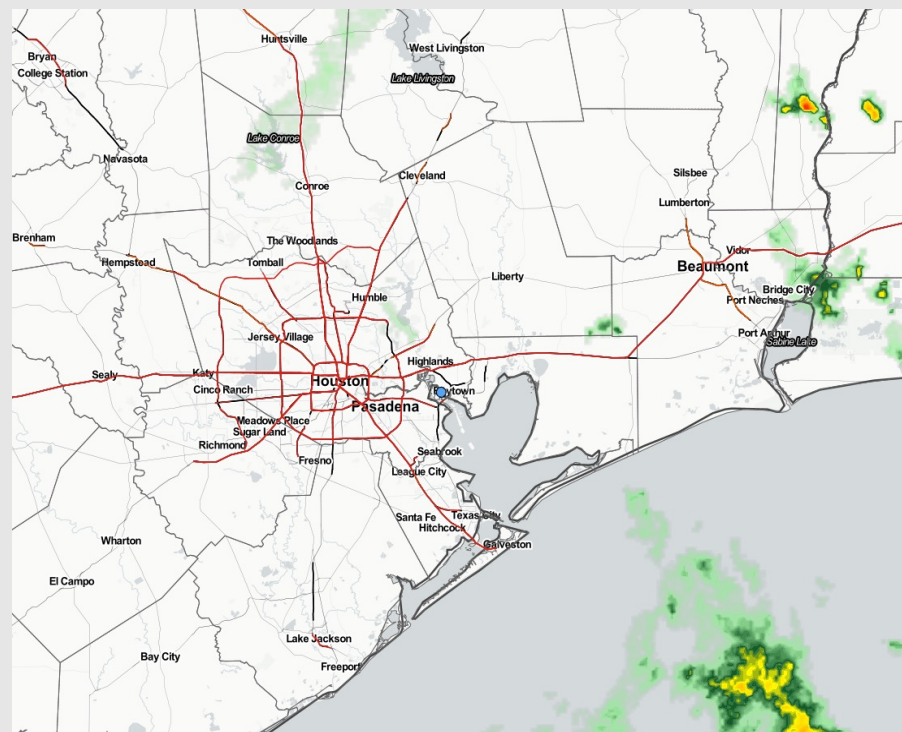


Updated: 2:45 PM CT
Sunday, June 4, 2023

Forecaster: Jonathan Kipper

Weather Headlines

- Showers/thunderstorms will be possible in the afternoon timeframes today and Monday, with more prolonged chances throughout the day on Tuesday.
- Calmer winds are favored to continue, with occasional periods of winds reaching up to 8 - 12 kts as storms pass through. **Favoring the highest wind gusts to be associated with today's storms at 30+ kts. Wind gusts MON/TUE will be upwards of 20-25 kts.**
- Sea fog will not be a concern moving forward.
- No tropical threats to monitor.



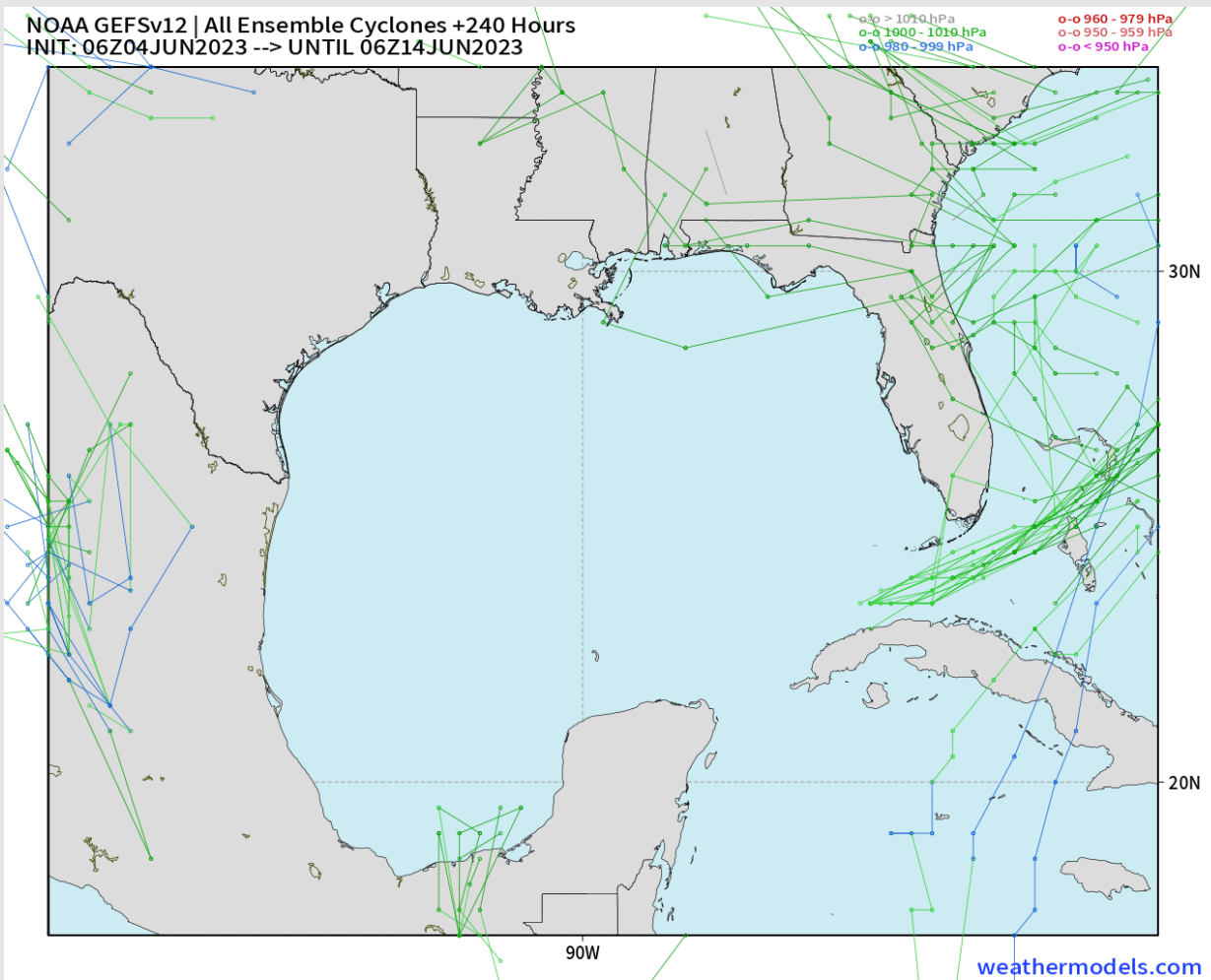
Radar/NWS Alerts: 2:35 PM CT



As always, please do not hesitate to reach out to us with any forecast questions via the chat option on the Weather Porthole or our on-call number, **(317)-560-8122** press 1 for forecast questions.

Houston Pilots Tropical Update

GEFS 10-Day Tracks



No tropical activity anticipated over the next 7-10 days.

Houston Pilots Visibility Chart (miles)



Time	Sun 1pm	Sun 2pm	Sun 3pm	Sun 4pm	Sun 5pm	Sun 6pm	Sun 7pm	Sun 8pm	Sun 9pm	Sun 10pm	Sun 11pm	Mon 12am	Mon 1am	Mon 2am	Mon 3am	Mon 4am	Mon 5am	Mon 6am	Mon 7am	Mon 8am	Mon 9am	Mon 10am	Mon 11am	Mon 12pm	Mon 1pm	Mon 2pm	Mon 3pm	Mon 4pm	Mon 5pm	Mon 6pm	Mon 7pm	Mon 8pm
610 Bridge	10	10	10	10	10	10	10	10	10	10	10	10	10	10	10	10	10	10	10	10	10	10	10	10	10	10	10	10	10	10	10	10
Kinder 1	10	10	10	10	10	10	10	10	10	10	10	10	10	10	10	10	10	10	10	10	10	10	10	10	10	10	10	10	10	10	10	10
Greens Bayou	10	10	10	10	10	10	10	10	10	10	10	10	10	10	10	10	10	10	10	10	10	10	10	10	10	10	10	10	10	10	10	10
Shell Crude	10	10	10	10	10	10	10	10	10	10	10	10	10	10	10	10	10	10	10	10	10	10	10	10	10	10	10	10	10	10	10	10
Lynchburg Ferries	10	10	10	10	10	10	10	10	10	10	10	10	10	10	10	10	10	10	10	10	10	10	10	10	10	10	10	10	10	10	10	10
Exxon 3	10	10	10	10	10	10	10	10	10	10	10	10	10	10	10	10	10	10	10	10	10	10	10	10	10	10	10	10	10	10	10	10
Morgans Point	10	10	10	10	10	10	10	10	10	10	10	10	10	10	10	10	10	10	10	10	10	10	10	10	10	10	10	10	10	10	10	10
75/76	10	10	10	10	10	10	10	10	10	10	10	10	10	10	10	10	10	10	10	10	10	10	10	10	10	10	10	10	10	10	10	10
63/64	10	10	10	10	10	10	10	10	10	10	10	10	10	10	10	10	10	10	10	10	10	10	10	10	10	10	10	10	10	10	10	10
51/52	10	10	10	10	10	10	10	10	10	10	10	10	10	10	10	10	10	10	10	10	10	10	10	10	10	10	10	10	10	10	10	10
37/38	10	10	10	10	10	10	10	10	10	10	10	10	10	10	10	10	10	10	10	10	10	10	10	10	10	10	10	10	10	10	10	10
25/26	10	10	10	10	10	10	10	10	10	10	10	10	10	10	10	10	10	10	10	10	10	10	10	10	10	10	10	10	10	10	10	10
11/12	10	10	10	10	10	10	10	10	10	10	10	10	10	10	10	10	10	10	10	10	10	10	10	10	10	10	10	10	10	10	10	10
1 & 2 Bravo	10	10	10	10	10	10	10	10	10	10	10	10	10	10	10	10	10	10	10	10	10	10	10	10	10	10	10	10	10	10	10	10

NOTE: This is automated data that may/may not agree with the official BAM thinking that’s found on the daily slides or special visibility report slides. This data should be used as a guide only

Houston Pilots Wind Chart



Forecast Confidence

Above Normal

Below Normal

Sustained wind 13 Knots

Gusts 18 Knots

Wind from the N

Example

WS: 13
G:18
N

Time Knots	Sun 1pm	Sun 2pm	Sun 3pm	Sun 4pm	Sun 5pm	Sun 6pm	Sun 7pm	Sun 8pm	Sun 9pm	Sun 10pm	Sun 11pm	Mon 12am	Mon 1am	Mon 2am	Mon 3am	Mon 4am	Mon 5am	Mon 6am	Mon 7am	Mon 8am	Mon 9am	Mon 10am	Mon 11am	Mon 12pm	Mon 1pm	Mon 2pm	Mon 3pm	Mon 4pm	Mon 5pm	Mon 6pm	Mon 7pm	Mon 8pm	
610 Bridge	3	3	3	3	3	3	3	3	3	3	3	2	2	1	1	2	1	1	2	2	2	2	2	2	3	3	4	4	4	3	3	2	
	5	5	5	5	5	6	5	5	5	5	4	3	3	2	2	3	2	2	3	3	2	3	3	4	4	5	6	6	6	5	4	4	
	NW	WNW	WNW	SE	S	SW	SE	ESE	SSE	NNW	NE	NW	W	NNW	NW	NNW	NNW	N	NNW	NNW	W	NNW	NW	W	W	SSW	S	SSW	WSW	SSE	ESE	E	
Kinder 1	3	3	3	3	3	3	3	3	3	3	3	2	2	2	1	2	1	1	2	2	2	2	2	2	3	3	4	4	4	3	3	2	
	5	5	5	5	5	5	5	5	5	5	4	3	3	3	2	3	2	2	3	3	2	3	3	4	4	5	6	6	6	5	5	4	
	NW	W	WNW	SSE	SSW	SW	SE	ESE	SE	NW	NE	NW	NNW	NNW	NW	NNW	NNW	N	NNW	NNW	SSW	NW	WNW	WSW	SW	S	SSW	SSW	WSW	SSE	ESE	ESE	
Greens Bayou	3	3	3	3	3	3	3	3	3	3	3	2	2	2	1	2	1	1	2	2	2	2	2	2	3	3	4	4	4	3	3	3	
	4	5	5	5	5	5	5	5	5	5	4	3	3	3	2	3	2	2	3	3	3	3	3	4	4	5	6	6	6	5	5	4	
	NW	WNW	WNW	W	SW	SW	SSE	ESE	SE	W	NE	W	NNW	NNW	NNW	NNW	NNW	N	NNW	NNW	SSW	SSW	S	S	SSE	SSW	SSW	SSW	SW	SSE	ESE	SE	
Shell Crude	3	3	3	3	3	3	4	3	3	3	3	2	2	2	2	2	1	1	2	2	2	2	2	2	3	4	4	4	4	3	3	3	
	4	4	5	5	5	5	5	5	5	5	4	3	4	3	3	3	2	2	3	3	3	3	3	4	4	5	6	6	6	5	5	4	
	NW	WNW	WNW	SW	SSW	SSW	SSE	SE	SE	SW	NE	WSW	NNW	NNW	NNW	NNW	NNW	N	NNW	NNW	S	E	E	SE	SE	SSE	SSW	SSW	SW	S	E	ESE	
Lynchburg Ferries	2	3	3	3	3	3	4	4	4	3	3	2	2	2	2	2	2	2	2	2	2	2	2	2	3	3	4	4	4	4	4	3	
	4	4	5	5	5	5	6	5	5	5	5	4	4	3	3	3	2	2	3	3	3	3	3	4	4	5	6	6	6	5	5	5	
	NNW	WNW	WNW	WSW	SSW	SSW	SSE	SSE	SE	S	E	SE	NNW	WSW	NNW	NNW	NNW	N	NNW	NNW	SSE	S	SSE	ESE	SSE	SSW	SSW	S	SSW	SSW	ESE	SE	
Exxon 3	2	3	3	3	3	4	4	4	4	3	4	3	3	2	2	2	2	2	3	2	2	2	2	2	3	3	4	5	4	4	4	3	
	4	4	5	5	5	6	5	5	5	5	5	4	4	3	3	3	3	3	4	3	3	3	3	3	4	5	6	6	6	6	5	5	
	NNW	WNW	WNW	SSW	S	S	S	S	SSE	SSE	SSE	SSE	NW	WNW	NNW	NW	NNW	N	NNW	NW	S	WSW	SW	SE	SSE	SSE	SSW	SSW	SSW	SW	E	ESE	
Morgans Point	3	3	3	4	4	4	5	4	4	4	4	3	3	3	3	3	3	3	3	3	3	3	2	3	3	4	5	5	5	5	4	4	
	4	5	5	6	6	6	6	6	5	5	5	4	4	4	4	4	4	4	4	4	4	4	3	3	4	5	7	7	7	6	6	5	
	W	WNW	WSW	S	S	S	SSW	SSW	SSE	S	SSE	ESE	NNW	SW	SW	SW	WSW	N	N	NW	WSW	SSW	SSE	SE	SSE	SSE	SSW	SSW	SSW	S	E	E	
75/76	3	3	4	5	5	5	6	6	5	5	6	5	4	4	4	4	4	4	4	4	4	4	3	3	3	4	5	6	6	6	5	5	
	5	5	5	6	7	6	7	6	6	6	6	5	4	4	4	5	4	4	5	5	4	4	4	5	6	7	8	7	7	7	6	6	
	SE	SSW	SSW	S	S	SSW	SW	WSW	SSW	SW	SSW	NE	NNW	E	ESE	E	ESE	W	W	WNW	WNW	NE	NE	ESE	SE	SE	SSW	SSW	S	S	ESE	NE	
63/64	3	3	4	5	5	6	6	6	5	5	6	5	4	4	4	4	4	4	4	4	4	4	3	3	3	4	5	6	6	6	5	5	
	5	5	5	6	7	6	7	7	5	6	7	5	4	4	4	4	4	4	5	5	5	4	4	4	5	6	7	7	7	7	6	6	
	E	ESE	SSW	S	S	SSW	WSW	W	SW	WSW	NNW	NNE	NNW	ENE	S	ENE	ENE	SE	SW	S	N	ENE	NNE	ESE	SE	SE	SSW	S	S	S	SSE	NE	
51/52	3	3	3	5	5	5	6	5	4	5	6	5	4	3	3	3	3	3	4	4	4	3	3	3	3	4	5	6	6	6	5	5	
	4	4	5	6	6	6	7	6	5	5	6	5	4	4	4	4	4	4	4	5	4	3	4	4	5	6	7	7	7	6	5	5	
	SE	ESE	SSW	SSW	SSW	SSW	WSW	W	WSW	WNW	NNW	NNE	NNW	SSE	SW	WSW	E	ENE	SSE	SSE	N	SSW	NNE	ESE	SE	ESE	S	S	S	S	SSE	NE	
37/38	3	3	3	4	4	5	5	5	4	4	5	4	4	3	3	3	3	3	4	4	4	3	3	3	3	4	5	6	6	6	5	4	4
	4	4	4	5	5	5	6	5	4	5	6	5	4	4	3	3	3	3	4	4	5	4	4	4	5	6	7	7	6	6	5	5	
	SE	ESE	SSW	SW	SSW	SSW	SW	W	WSW	WNW	NNW	NNE	N	WNW	NW	N	SE	E	SSE	SSW	N	WSW	NNE	SE	ESE	S	S	S	S	S	SE	SE	
25/26	3	3	4	4	4	4	4	4	3	4	5	4	4	3	3	2	2	3	3	4	4	4	3	3	4	4	5	5	5	5	5	3	3
	4	4	4	5	5	5	5	4	4	4	6	5	5	4	4	3	3	3	4	4	4	4	4	4	5	6	7	6	6	6	4	4	
	SE	ESE	SSW	SW	SW	SW	SW	W	W	NW	NW	ESE	N	SSW	NNW	N	SW	ESE	SSE	ESE	N	W	NNE	S	SSE	SSE	SSE	SSE	S	S	S	SSW	
11/12	3	3	4	4	4	4	4	4	4	4	5	4	4	4	3	3	3	3	3	4	4	3	3	3	4	4	5	5	5	5	4	4	
	4	4	4	5	5	5	5	5	4	5	6	5	5	5	4	3	3	3	4	5	5	4	4	4	4	5	6	7	6	6	5	5	
	S	SSE	SSW	SW	WSW	SW	SW	WNW	NW	NW	SW	N	E	SW	NNW	N	WSW	ENE	ESE	NNE	N	SW	NE	SSW	SSE	SSE	S	S	S	S	S	SSW	
1 & 2 Bravo	2	3	3	3	4	4	5	5	4	5	6	5	5	4	3	3	3	3	3	4	4	4	3	3	3	4	5	6	6	6	5	5	5
	4	4	4	4	5	5	5	5	5	5	6	5	5	4	3	3	3	4	4	5	5	5	5	4	5	6	7	6	6	6	5	5	
	WNW	SW	SW	SW	WSW	SW	WSW	WNW	WNW	NNW	NW	NNW	NNW	WNW	N	NW	NW	NNE	NNE	NE	NW	ENE	E	SSE	SSE	SE	SSW	S	S	S	S	SW	

NOTE: This is automated data that may/may not agree with the official BAM thinking that's found on the daily slides or special visibility report slides. This data should be used as a guide only

Houston Pilots: Sun. 6/4/2023

Forecast Discussion

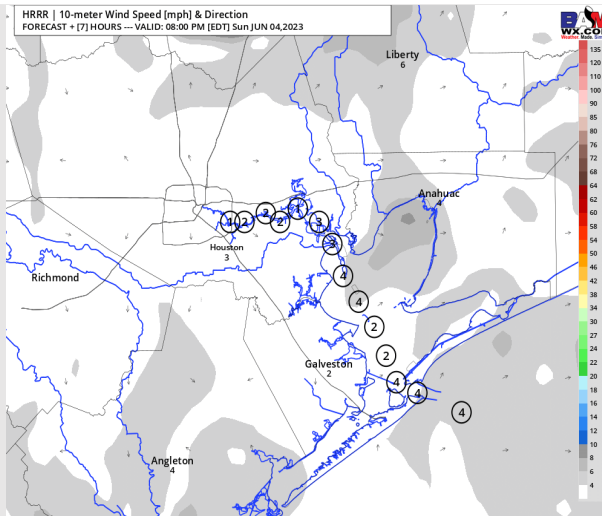
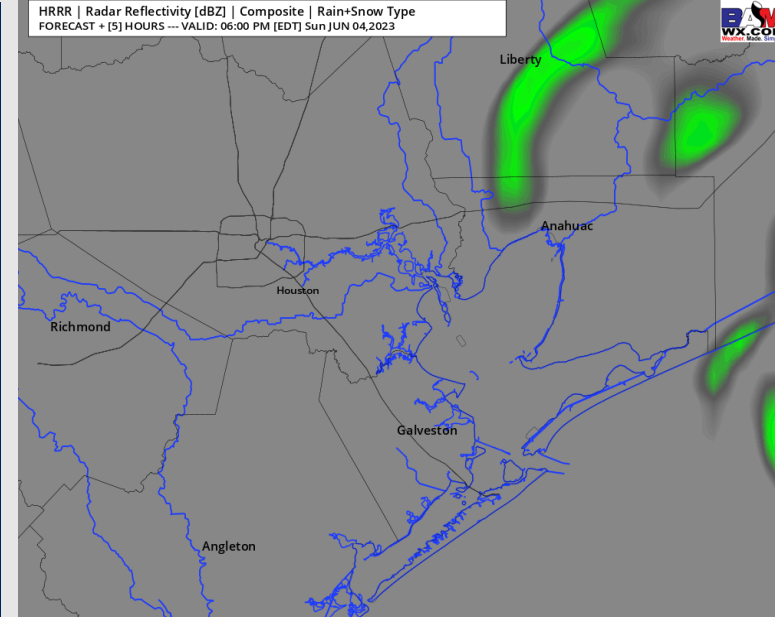
Precip: A 10-20% chance for a few hit/miss, pop-up showers/thunderstorms will be possible through the rest of the day. **Lightning and wind gusts of 25-30+ kts will be possible under the strongest cells.**

Wind: Winds will continue to be variable the remainder of the day with a tendency to be out of the NW for stations N of Morgan's point and the SW for stations S of Morgan's Point. Wind speeds for all stations will be at 3 – 8 kts throughout the rest of the evening. **Wind gusts of 25 – 30+ kts will be possible if caught under a heavy cell (these higher wind gusts will be isolated to the heaviest cells and not widespread).**

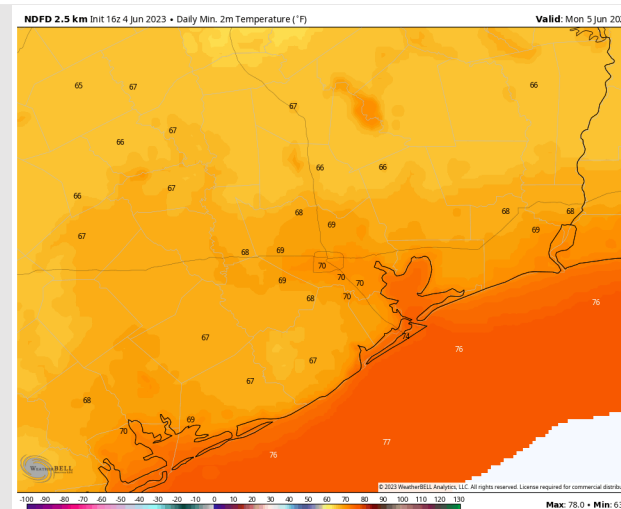
Temps: Low temps for Monday will be in the mid 70s F near the boarding station and low 70s F at all other stations.

Visibility: Not anticipating any visibility concerns due to fog at this time, though visibility may be reduced under storms.

Precip Image: 5 PM CT



Wind Speed:
7 PM CT



Low Temps
Monday

Houston Pilots: Mon. 6/5/2023

Forecast Discussion

Precip: A very low-end chance for an isolated shower will be possible during the morning hours lasting until 1 PM on Monday. After 1 PM, anticipating coverage to increase as showers/storms become more scattered across the area through 10 PM. Dry conditions anticipated after 10 PM.

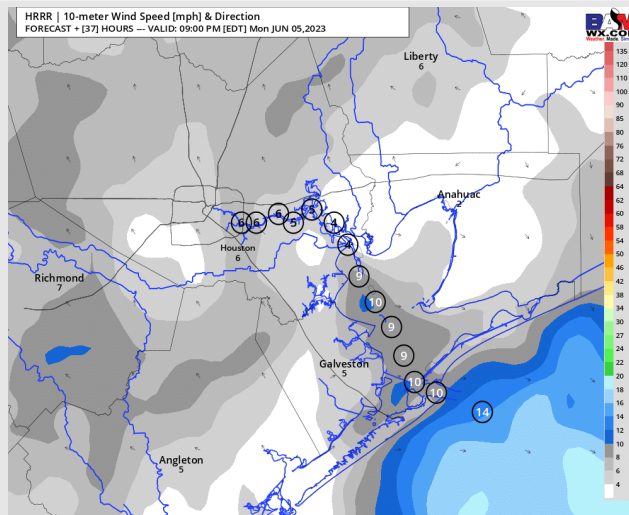
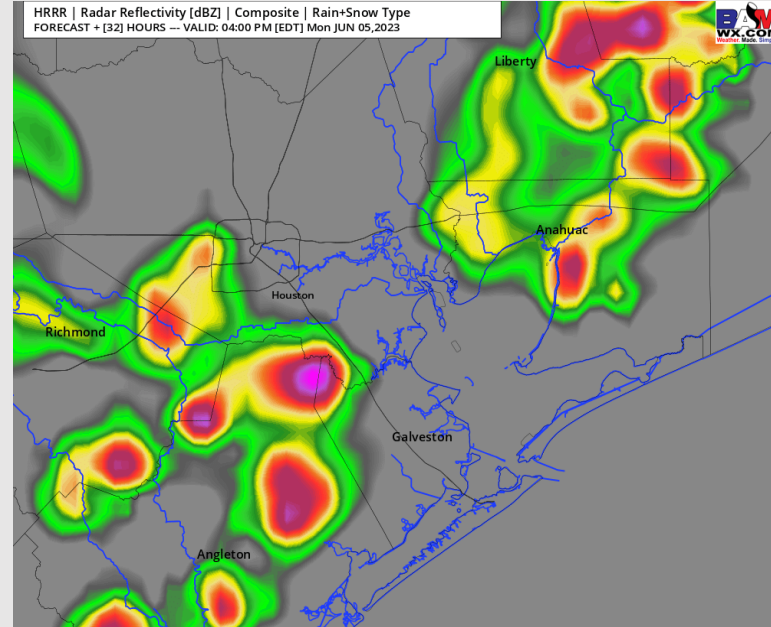
Wind: Winds will be out of the NW throughout the AM hours before becoming more variable between 12 – 4 PM. After 4 PM, winds will then shift to out of the SW and continue for the remainder of the day. Winds speeds N of Morgan's Point will be 1-7 kts throughout the day Monday, winds S of Morgan's Point will be 3-8 kts through 2 PM before increasing to 7-12 kts throughout the rest of the day.

Wind gusts of 20 - 25 kts will be possible under heaviest cells during 12 – 10 PM.

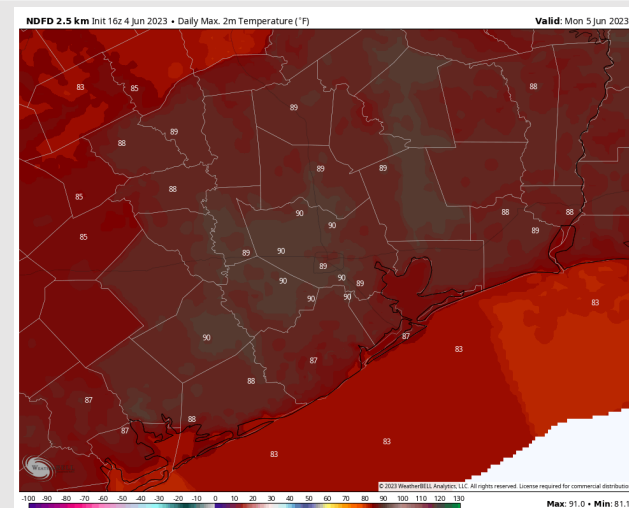
Temps: High temps Monday will be in the low 80s F for the Boarding Station and in the upper 80s/low 90s F for all other stations.

Visibility: Not anticipating visibility concerns at this time.

Precip Image: 3 PM CT



**Wind Speed:
8 PM CT**



**High Temps
Monday**

Forecast Discussion

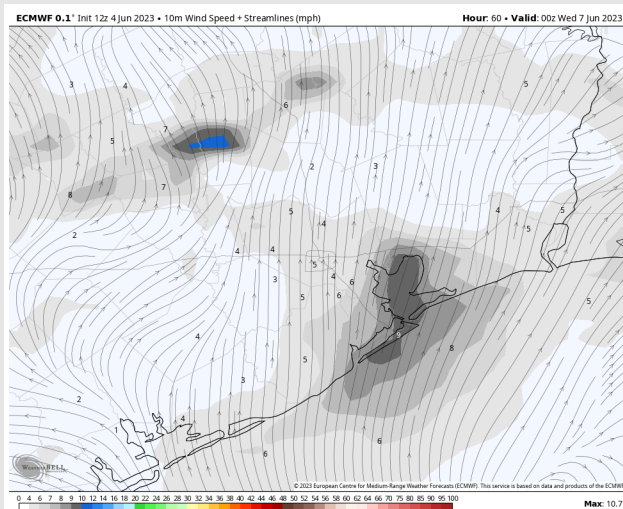
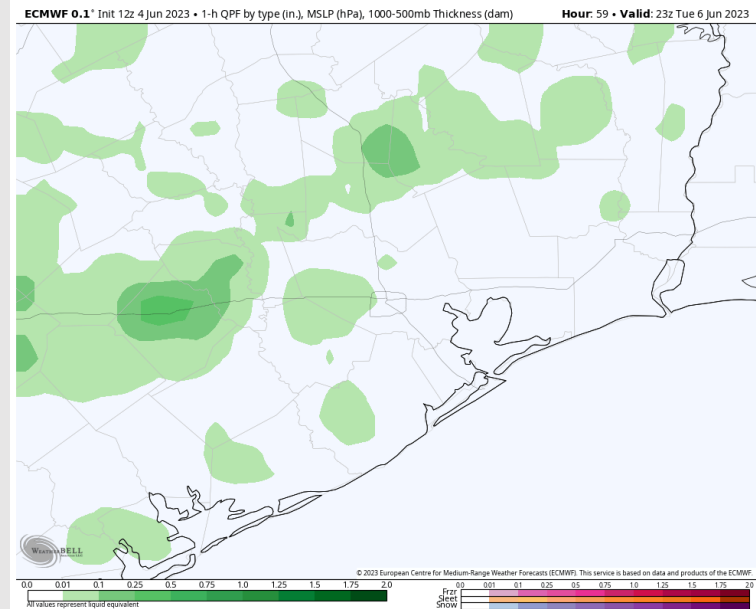
Precip: A 20 - 30% chance for scattered showers/storms will be possible throughout the majority of the day on Tuesday, with chances moving out of the area around 7-8 PM. Better chances will lie S of the boarding station during the AM hours and N of HOU metro during the PM hours.

Wind: Favoring winds to be out of the SSW for the majority of the day on Tuesday, becoming variable at times when cells cross over the area. Winds at all stations will be at 2-7 kts throughout the day outside of 2 - 8 PM timeframe where winds south of Morgan's Point will slightly increase to 6-11 kts. **Wind gusts of up to 20 - 25 kts will be possible under the heaviest cells.**

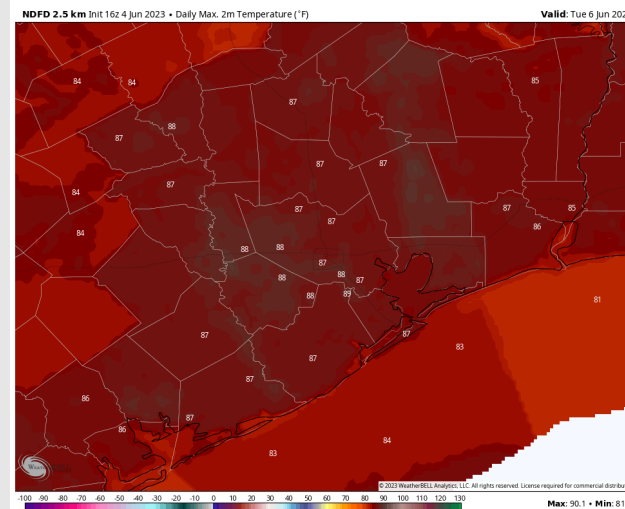
Temps: High temperatures on Tuesday will be in the low 80s F near the boarding station and mid/upper 80s F across all other stations.

Visibility: Not anticipating any visibility concerns at this time.

Precip Image: 6 PM CT



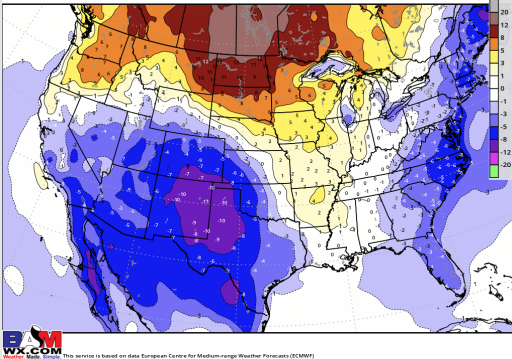
Wind Speed:
7 PM CT



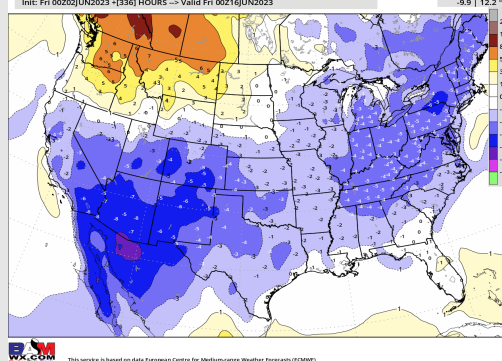
High Temps
Tuesday

Houston Pilots: 6/2/23

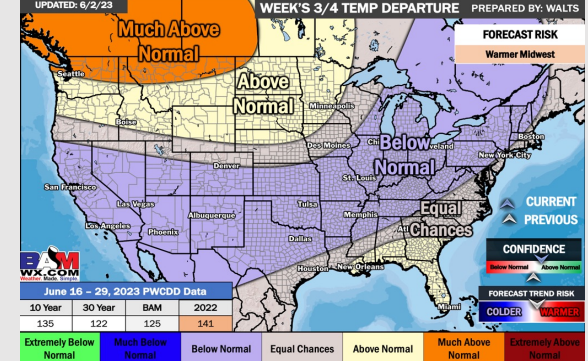
Next 7 Day Temperature Departure



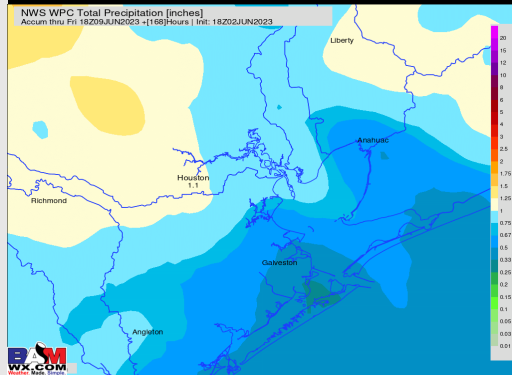
8-14 Day Temperature Departure



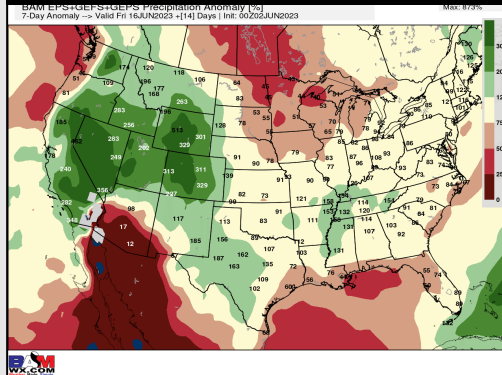
15-30 Day Temperature Departure



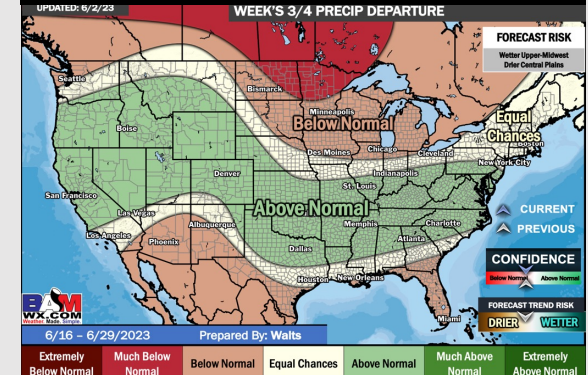
Next 7 Day Total Precipitation



8-14 Day % of Average Precip.



15-30 Day % of Average Precip.



- Watching a few very isolated rain chances over the few days. Favoring slightly below normal temperatures over the next week.
- Expecting below normal precipitation chances and near normal to slightly below normal temperatures for the week 2 timeframe.
- Near normal temperatures and near to below normal chances for precipitation are favored in the weeks $\frac{3}{4}$ timeframe.