

# Houston Pilots Forecast Package



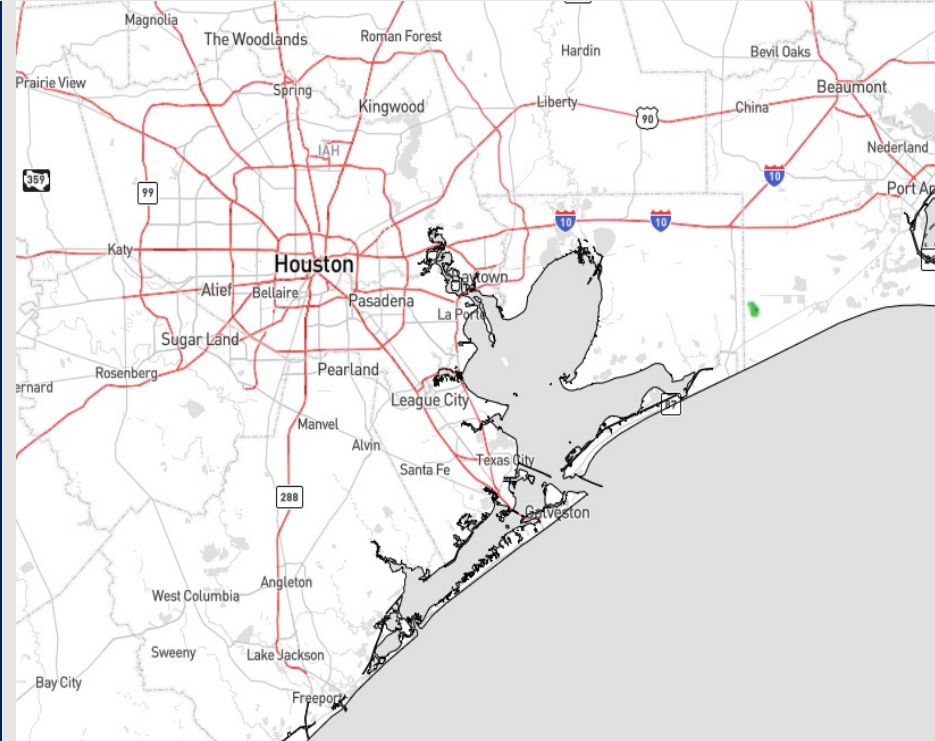
Updated: 5:00 AM CT

Wednesday, May 31, 2023

Forecaster: Xander Lowry

## Weather Headlines

- Low end 10-20% isolated shower/thunderstorm chances will be possible over the next few days, with most (if not all) locations staying dry.
- Calmer winds are favored to continue, with occasional periods of winds reaching up to 10 kts.
- Sea fog will not be a concern moving forward.
- No tropical threats to monitor.



**Radar/NWS Alerts: 4:50 AM CT**



As always, please do not hesitate to reach out to us with any forecast questions via the chat option on the Weather Porthole or our on-call number, **(317)-560-8122** press 1 for forecast questions.

# Houston Pilots Extended Range Visibility Report



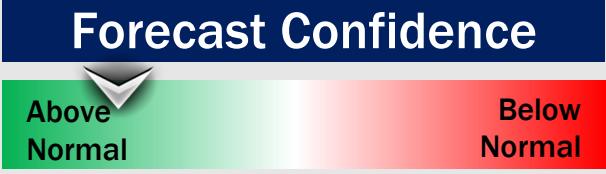
## Saturday 6/3/23

Not anticipating any visibility concerns on Saturday.



## Sunday 6/4/23

Not anticipating any visibility concerns on Sunday.



## Monday 6/5/23

Not anticipating any visibility concerns on Monday.



## Chance for Reduced Visibility

Saturday AM	Unlikely
Saturday PM	Unlikely
Sunday AM	Unlikely
Sunday PM	Unlikely
Monday AM	Unlikely
Monday PM	Unlikely

# Houston Pilots Visibility Chart (miles)



Time	Wed 3am	Wed 4am	Wed 5am	Wed 6am	Wed 7am	Wed 8am	Wed 9am	Wed 10am	Wed 11am	Wed 12pm	Wed 1pm	Wed 2pm	Wed 3pm	Wed 4pm	Wed 5pm	Wed 6pm	Wed 7pm	Wed 8pm	Wed 9pm	Wed 10pm	Wed 11pm	Thu 12am	Thu 1am	Thu 2am	Thu 3am	Thu 4am	Thu 5am	Thu 6am	Thu 7am	Thu 8am	Thu 9am	Thu 10am	Thu 11am	Thu 12pm	Thu 1pm	Thu 2pm		
<b>610 Bridge</b>	10	10	10	10	10	10	10	10	10	10	10	10	10	10	10	10	10	10	10	10	10	10	10	10	10	10	10	10	10	10	10	10	10	10	10	10	10	10
<b>Kinder 1</b>	10	10	10	10	10	10	10	10	10	10	10	10	10	10	10	10	10	10	10	10	10	10	10	10	10	10	10	10	10	10	10	10	10	10	10	10	10	10
<b>Greens Bayou</b>	10	10	10	10	10	10	10	10	10	10	10	10	10	10	10	10	10	10	10	10	10	10	10	10	10	10	10	10	10	10	10	10	10	10	10	10	10	10
<b>Shell Crude</b>	10	10	10	10	10	10	10	10	10	10	10	10	10	10	10	10	10	10	10	10	10	10	10	10	10	10	10	10	10	10	10	10	10	10	10	10	10	10
<b>Lynchburg Ferries</b>	10	10	10	10	10	10	10	10	10	10	10	10	10	10	10	10	10	10	10	10	10	10	10	10	10	10	10	10	10	10	10	10	10	10	10	10	10	10
<b>Exxon 3</b>	10	10	10	10	10	10	10	10	10	10	10	10	10	10	10	10	10	10	10	10	10	10	10	10	10	10	10	10	10	10	10	10	10	10	10	10	10	10
<b>Morgans Point</b>	10	10	10	10	10	10	10	10	10	10	10	10	10	10	10	10	10	10	10	10	10	10	10	10	10	10	10	10	10	10	10	10	10	10	10	10	10	10
<b>75/76</b>	10	10	10	10	10	10	10	10	10	10	10	10	10	10	10	10	10	10	10	10	10	10	10	10	10	10	10	10	10	10	10	10	10	10	10	10	10	10
<b>63/64</b>	10	10	10	10	10	10	10	10	10	10	10	10	10	10	10	10	10	10	10	10	10	10	10	10	10	10	10	10	10	10	10	10	10	10	10	10	10	10
<b>51/52</b>	10	10	10	10	10	10	10	10	10	10	10	10	10	10	10	10	10	10	10	10	10	10	10	10	10	10	10	10	10	10	10	10	10	10	10	10	10	10
<b>37/38</b>	10	10	10	10	10	10	10	10	10	10	10	10	10	10	10	10	10	10	10	10	10	10	10	10	10	10	10	10	10	10	10	10	10	10	10	10	10	10
<b>25/26</b>	10	10	10	10	10	10	10	10	10	10	10	10	10	10	10	10	10	10	10	10	10	10	10	10	10	10	10	10	10	10	10	10	10	10	10	10	10	10
<b>11/12</b>	10	10	10	10	10	10	10	10	10	10	10	10	10	10	10	10	10	10	10	10	10	10	10	10	10	10	10	10	10	10	10	10	10	10	10	10	10	10
<b>1 &amp; 2 Bravo</b>	10	10	10	10	10	10	10	10	10	10	10	10	10	10	10	10	10	10	10	10	10	10	10	10	10	10	10	10	10	10	10	10	10	10	10	10	10	10

**NOTE: This is automated data that may/may not agree with the official BAM thinking that's found on the daily slides or special visibility report slides. This data should be used as a guide only**

# Houston Pilots Wind Chart



## Forecast Confidence



## Example

Sustained wind 13 Knots  
Gusts 18 Knots  
Wind from the N

WS: 13  
G:18  
N

Time Knots	Wed 3am	Wed 4am	Wed 5am	Wed 6am	Wed 7am	Wed 8am	Wed 9am	Wed 10am	Wed 11am	Wed 12pm	Wed 1pm	Wed 2pm	Wed 3pm	Wed 4pm	Wed 5pm	Wed 6pm	Wed 7pm	Wed 8pm	Wed 9pm	Wed 10pm	Wed 11pm	Thu 12am	Thu 1am	Thu 2am	Thu 3am	Thu 4am	Thu 5am	Thu 6am	Thu 7am	Thu 8am	Thu 9am	Thu 10am	Thu 11am	Thu 12pm	Thu 1pm	Thu 2pm			
<b>610 Bridge</b>	2	2	2	2	2	3	3	5	7	6	6	7	7	8	8	7	8	7	6	5	4	3	3	3	2	2	1	1	2	2	2	2	2	4	6	5	6	6	7
<b>Kinder 1</b>	2	2	2	2	2	3	3	5	6	7	7	8	8	8	8	8	7	6	5	4	3	3	3	2	2	1	1	2	2	2	2	2	4	6	5	6	6	7	
<b>Greens Bayou</b>	2	2	2	2	2	3	3	5	6	7	7	8	8	8	9	8	8	7	6	5	4	3	3	3	2	2	1	1	2	2	2	2	4	6	6	7	7	8	
<b>Shell Crude</b>	2	2	2	2	2	3	3	5	6	7	7	8	8	9	10	9	8	7	6	4	3	3	3	2	3	2	1	2	2	2	3	4	5	6	7	8	8		
<b>Lynchburg Ferries</b>	3	3	3	2	3	3	4	5	6	7	7	8	8	9	10	9	9	7	6	5	4	4	3	3	3	2	2	2	3	3	4	4	5	6	6	7	8		
<b>Exxon 3</b>	3	4	3	3	4	4	4	5	7	7	8	8	10	10	9	9	7	6	5	4	4	4	4	3	3	3	3	3	3	3	4	5	6	7	7	8	8		
<b>Morgans Point</b>	5	5	4	4	5	5	6	7	8	8	9	10	11	11	10	11	10	9	8	6	5	5	4	4	3	4	4	4	4	4	4	5	6	7	8	9	9		
<b>75/76</b>	7	6	6	5	5	6	7	7	8	8	8	10	11	12	12	12	12	11	10	8	8	7	6	5	5	5	5	5	5	6	6	6	6	7	7	9	10	10	
<b>63/64</b>	7	7	6	5	5	6	7	7	8	9	8	10	11	11	12	12	12	11	9	9	8	8	7	6	5	5	5	5	5	6	6	6	6	6	6	7	8	10	
<b>51/52</b>	7	7	6	5	5	6	7	7	8	8	9	9	10	10	11	11	11	10	9	8	7	7	5	5	4	4	4	4	5	6	6	5	6	5	7	9	9		
<b>37/38</b>	7	6	6	5	5	6	7	7	8	8	9	9	10	10	10	10	9	8	7	8	7	6	5	4	4	4	4	4	5	6	5	6	5	6	6	7	8	9	
<b>25/26</b>	7	6	5	5	5	6	7	7	8	8	9	9	9	9	9	9	8	7	7	6	6	5	4	4	4	4	4	4	5	6	6	6	6	6	7	8	9		
<b>11/12</b>	7	7	6	5	5	6	7	8	8	8	8	9	9	9	9	9	8	7	7	7	6	6	5	4	4	4	4	5	5	6	6	6	6	6	6	7	8	9	
<b>1 &amp; 2 Bravo</b>	9	8	7	6	6	7	8	8	9	8	8	8	8	8	9	9	9	8	8	8	8	7	6	6	5	5	5	5	5	6	7	7	7	7	7	7	7		

NOTE: This is automated data that may/may not agree with the official BAM thinking that's found on the daily slides or special visibility report slides. This data should be used as a guide only

## Forecast Discussion

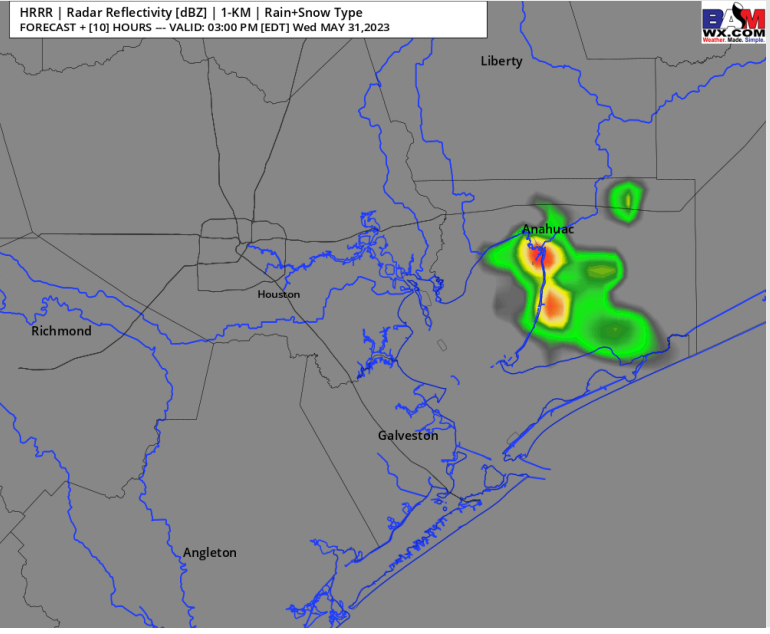
**Precip:** This morning a 10% chance of isolated popups can't be ruled out between 7 – 9 AM. A 20-30% chance for a popup will be possible from 2-7 PM. Greatest potential expected to remain north/east of majority of stations. Lightning / brief downpour and gustier winds (21-26 kts) can't be ruled out if impacted directly.

**Wind:** Sustained winds will start from out of the ESE during the early AM before shifting from the SSE by 11 AM local time and remaining that way for the rest of the day. Winds will be 4 – 8 knots in the AM hours. By 4pm local time winds will have picked up to 10-15kts from the SSE for stations S of Morgan's Point. Gusts of 21-26 kts will be possible under the strongest cells tomorrow.

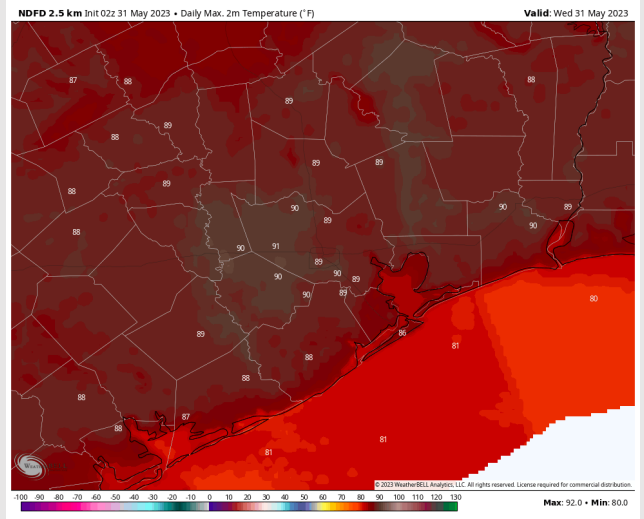
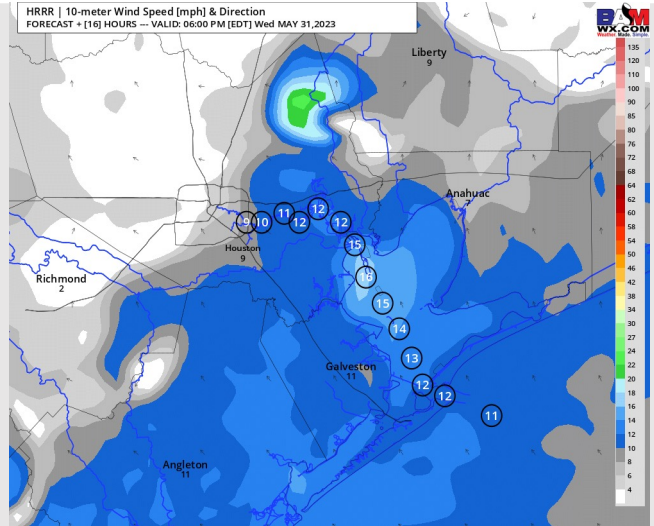
**Temps:** High temperatures in the low 80s F at the Boarding Station and in the upper 80s F to near 90 F across all other stations.

**Visibility:** Not anticipating any visibility concerns at this time.

## Precip Image: 2 PM CT



Wind Speed:  
5 PM CT



High Temps  
Today

# Houston Pilots: Thu. 6/1/2023



## Forecast Discussion

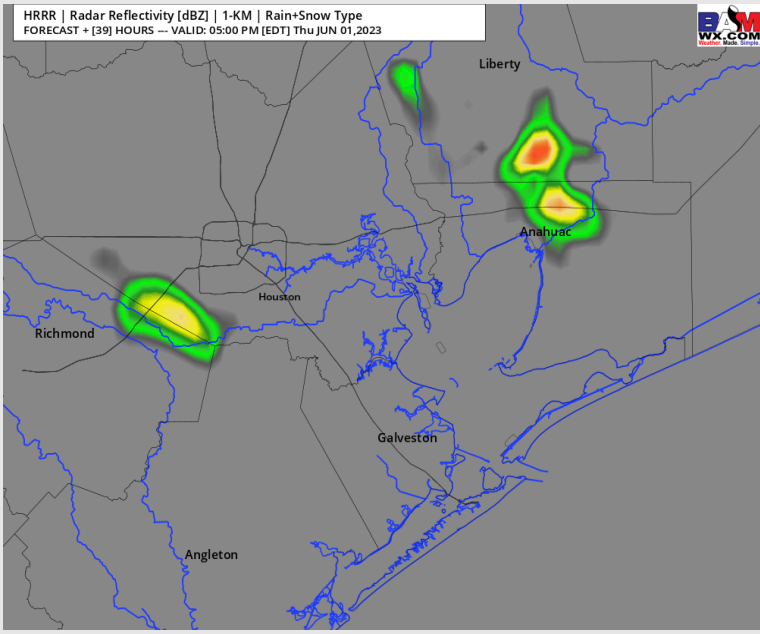
**Precip:** A 10% chance of an isolated pop up can't be ruled out from 2PM-7PM, but overall conditions look dry for all stations for Thursday.

**Wind:** Winds will be variable with a tendency to be out of the SE at 3-7kts as a system exits the region through 10 AM Thursday. Starting around 2pm winds will begin to pick up from the SSE and be 8-12kts for stations S of Morgan's point. By 5pm winds will be from the SSE at 10-15kts with some localized areas S of Morgan's point having 20kt gusts.

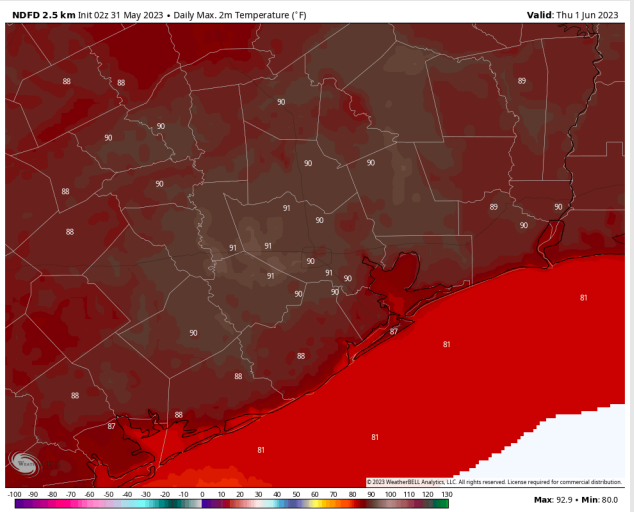
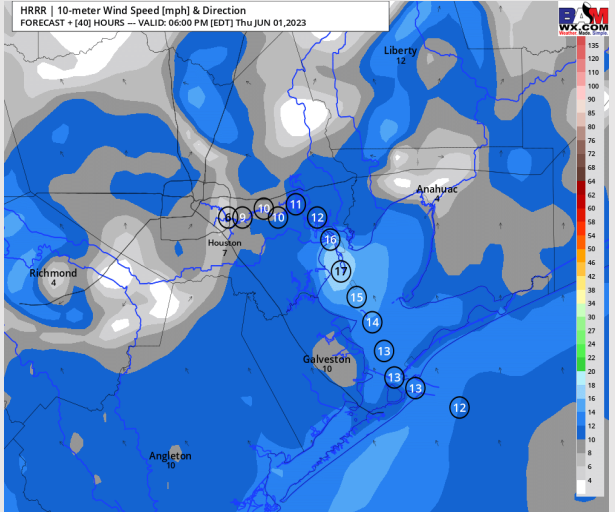
**Temps:** High temperatures Thursday will be in the upper 80s F North of Morgan's Point and in the mid to low 80s F for stations S of Morgan's Point.

**Visibility:** Not anticipating any visibility concerns currently.

## Precip Image: 4 PM CT



Wind Speed:  
5 PM CT



High Temps  
Thursday

# Houston Pilots: Fri. 6/2/2023



## Forecast Discussion

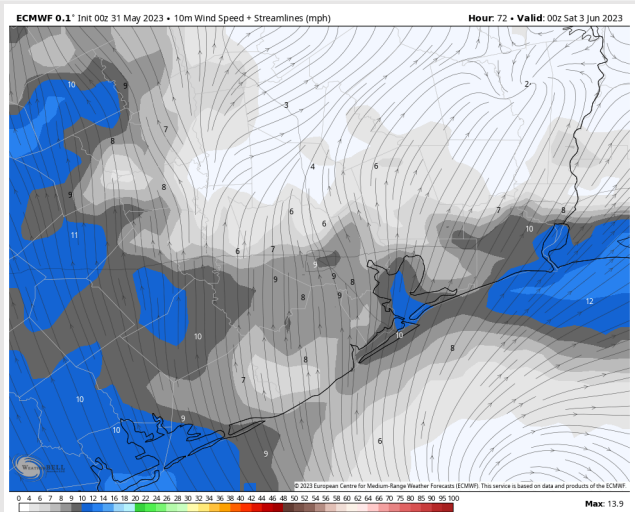
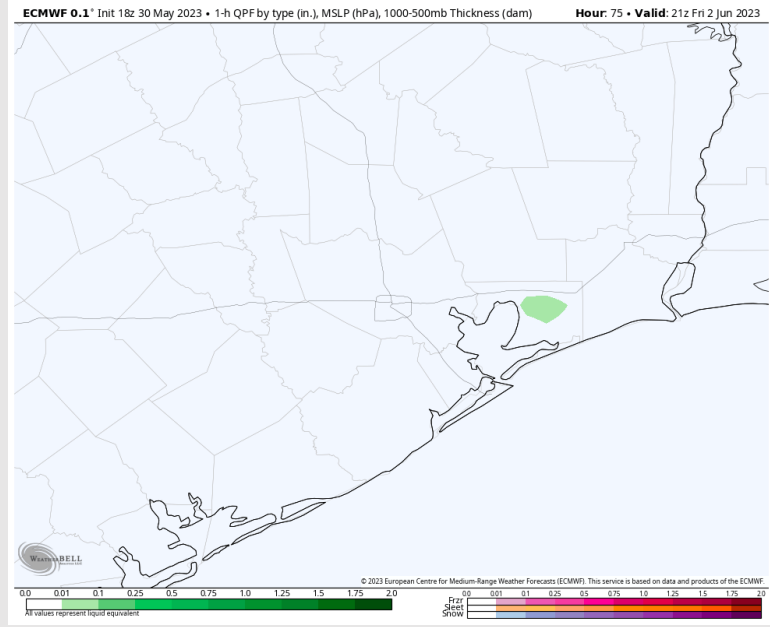
**Precip:** A 10% chance of an isolated pop up can't be ruled out from 2PM-7PM, but overall conditions look dry for all stations for Friday.

**Wind:** Winds will be out of the SE during the early morning hours on Friday, before becoming variable from the 4 AM – 1 PM timeframe, then after 1 PM, winds will shift to out of the S for the rest of the day. Sustained winds will be 3-8 kts throughout the morning Friday with winds increasing to 6-10kts after 7pm.

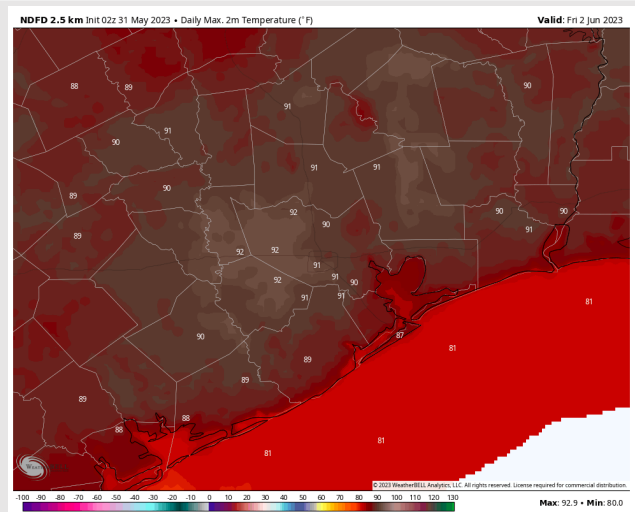
**Temps:** High temps Friday in the low 80s F near the boarding station and in the upper 80s F to low 90s F across all other stations.

**Visibility:** Slight risk for scattered radiation fog between 6 - 8 AM.

## Precip Image: 4 PM CT



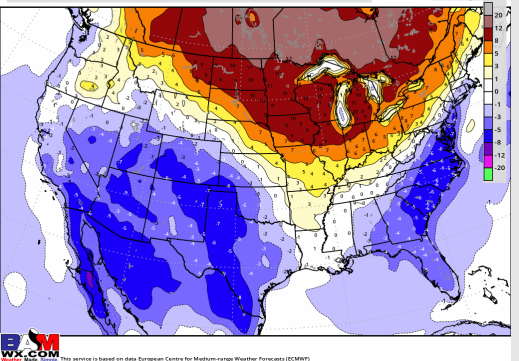
Wind Speed:  
7 PM CT



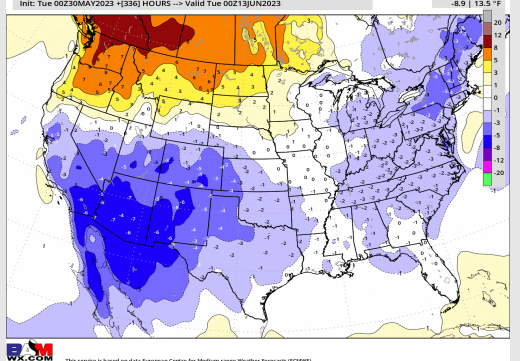
High Temps  
Friday

# Houston Pilots: 5/31/23

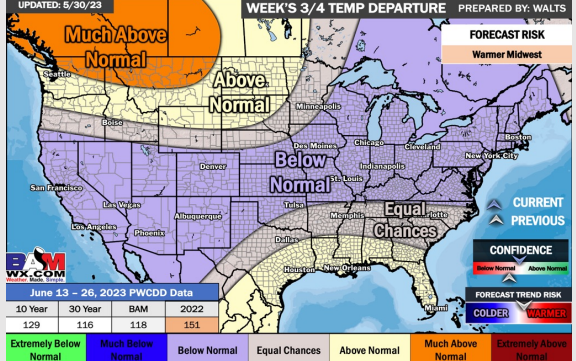
**Next 7 Day Temperature Departure**



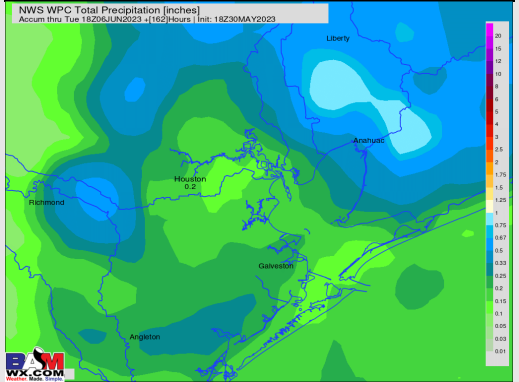
**8-14 Day Temperature Departure**



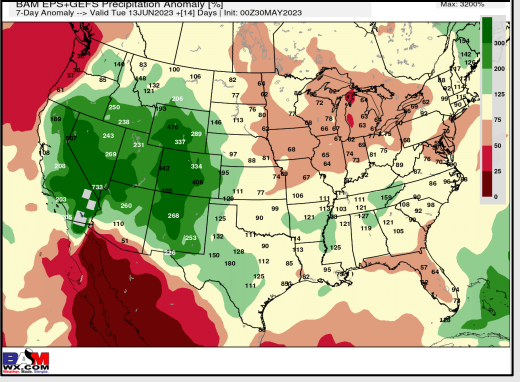
**15-30 Day Temperature Departure**



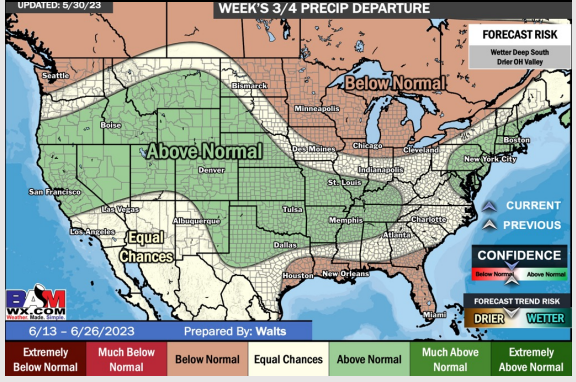
**Next 7 Day Total Precipitation**



**8-14 Day % of Average Precip.**



**15-30 Day % of Average Precip.**



- Watching a few very isolated rain chances over the next 64 hours. Favoring near normal to slightly below normal temperatures over the next week.
- Expecting near normal precipitation chances and near normal normal to slightly below normal temperatures for the week 2 timeframe.
- Above normal temperatures and below normal chances for precipitation are favored in the weeks 3/4 timeframe.