

Houston Pilots Forecast Package

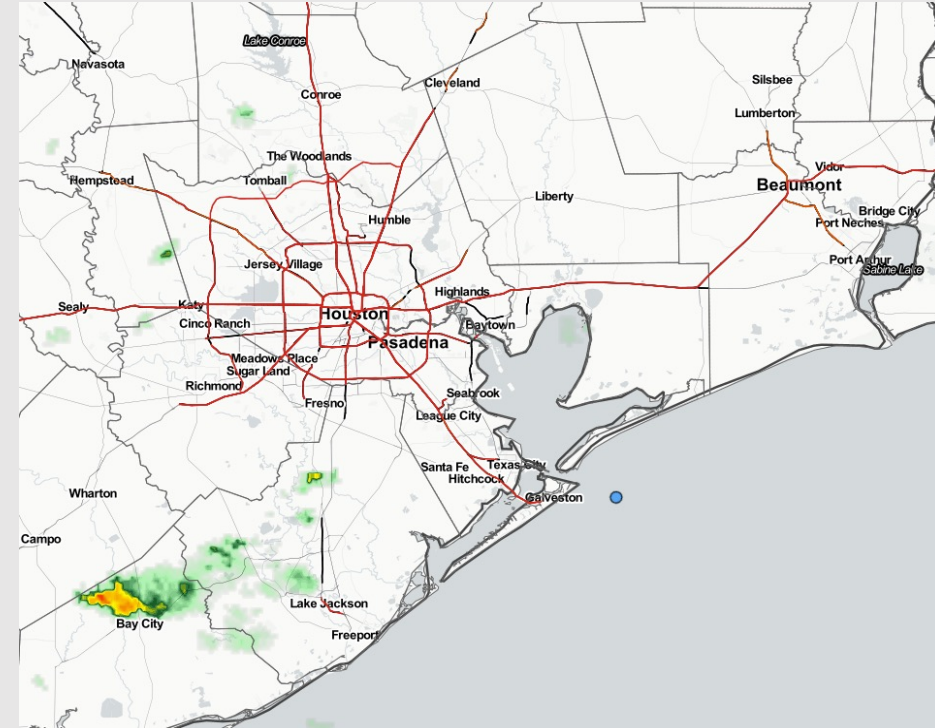


Updated: 2:10 PM CT
Monday, May 29, 2023

Forecaster: Will Danby

Weather Headlines

- Low end 10-20% isolated shower/thunderstorm chances will be possible over the next few days, with most (if not all) locations staying dry.
- Calmer winds are favored to continue, with occasional periods of winds reaching up to 10 kts.
- Sea fog will not be a concern moving forward.
- No tropical threats to monitor.



Radar/NWS Alerts: 2:10 PM CT



As always, please do not hesitate to reach out to us with any forecast questions via the chat option on the Weather Porthole or our on-call number, **(317)-560-8122** press 1 for forecast questions.

Houston Pilots Extended Range Visibility Report



Thursday 6/1/23

Aside from a low-end risk for radiational fog north of Morgan's Point during the AM, not anticipating areas of reduced visibility via sea fog.



Saturday 6/3/23

Not anticipating any visibility concerns on Saturday.



Friday 6/2/23

Not favoring any reduced visibility for Friday.



Chance for Reduced Visibility

Thursday AM	Unlikely
Thursday PM	Unlikely
Friday AM	Unlikely
Friday PM	Unlikely
Saturday AM	Unlikely
Saturday PM	Unlikely

Houston Pilots Visibility Chart (miles)



Forecast Confidence



Time	Mon 1pm	Mon 2pm	Mon 3pm	Mon 4pm	Mon 5pm	Mon 6pm	Mon 7pm	Mon 8pm	Mon 9pm	Mon 10pm	Mon 11pm	Tue 12am	Tue 1am	Tue 2am	Tue 3am	Tue 4am	Tue 5am	Tue 6am	Tue 7am	Tue 8am	Tue 9am	Tue 10am	Tue 11am	Tue 12pm	Tue 1pm	Tue 2pm	Tue 3pm	Tue 4pm	Tue 5pm	Tue 6pm	Tue 7pm	Tue 8pm
610 Bridge	10	10	10	10	10	10	10	10	10	10	10	10	10	10	10	10	10	10	10	10	10	10	10	10	10	10	10	10	10	10	10	10
Kinder 1	10	10	10	10	10	10	10	10	10	10	10	10	10	10	10	10	10	10	10	10	10	10	10	10	10	10	10	10	10	10	10	10
Greens Bayou	10	10	10	10	10	10	10	10	10	10	10	10	10	10	10	10	10	10	10	10	10	10	10	10	10	10	10	10	10	10	10	10
Shell Crude	10	10	10	10	10	10	10	10	10	10	10	10	10	10	10	10	10	10	10	10	10	10	10	10	10	10	10	10	10	10	10	10
Lynchburg Ferries	10	10	10	10	10	10	10	10	10	10	10	10	10	10	10	10	10	10	10	10	10	10	10	10	10	10	10	10	10	10	10	10
Exxon 3	10	10	10	10	10	10	10	10	10	10	10	10	10	10	10	10	10	10	10	10	10	10	10	10	10	10	10	10	10	10	10	10
Morgans Point	10	10	10	10	10	10	10	10	10	10	10	10	10	10	10	10	10	10	10	10	10	10	10	10	10	10	10	10	10	10	10	10
75/76	10	10	10	10	10	10	10	10	10	10	10	10	10	10	10	10	10	10	10	10	10	10	10	10	10	10	10	10	10	10	10	10
63/64	10	10	10	10	10	10	10	10	10	10	10	10	10	10	10	10	10	10	10	10	10	10	10	10	10	10	10	10	10	10	10	10
51/52	10	10	10	10	10	10	10	10	10	10	10	10	10	10	10	10	10	10	10	10	10	10	10	10	10	10	10	10	10	10	10	10
37/38	10	10	10	10	10	10	10	10	10	10	10	10	10	10	10	10	10	10	10	10	10	10	10	10	10	10	10	10	10	10	10	10
25/26	10	10	10	10	10	10	10	10	10	10	10	10	10	10	10	10	10	10	10	10	10	10	10	10	10	10	10	10	10	10	10	10
11/12	10	10	10	10	10	10	10	10	10	10	10	10	10	10	10	10	10	10	10	10	10	10	10	10	10	10	10	10	10	10	10	10
1 & 2 Bravo	10	10	10	10	10	10	10	10	10	10	10	10	10	10	10	10	10	10	10	10	10	10	10	10	10	10	10	10	10	10	10	10

NOTE: This is automated data that may/may not agree with the official BAM thinking that's found on the daily slides or special visibility report slides. This data should be used as a guide only

Houston Pilots Wind Chart



Forecast Confidence



Example

Sustained wind 13 Knots
Gusts 18 Knots
Wind from the N

WS: 13
G:18
N

Time Knots	Mon 1pm	Mon 2pm	Mon 3pm	Mon 4pm	Mon 5pm	Mon 6pm	Mon 7pm	Mon 8pm	Mon 9pm	Mon 10pm	Mon 11pm	Tue 12am	Tue 1am	Tue 2am	Tue 3am	Tue 4am	Tue 5am	Tue 6am	Tue 7am	Tue 8am	Tue 9am	Tue 10am	Tue 11am	Tue 12pm	Tue 1pm	Tue 2pm	Tue 3pm	Tue 4pm	Tue 5pm	Tue 6pm	Tue 7pm	Tue 8pm	
610 Bridge	5 ESE	6 ESE	6 ESE	6 SE	7 SE	7 SE	7 SE	5 SE	5 SE	4 SE	3 SE	3 SSE	2 SE	2 E	2 ENE	2 NNE	2 ENE	2 NE	2 NE	3 NE	3 NE	4 NE	5 ENE	6 E	6 E	7 ESE	7 ESE	8 SE	8 SE	8 SE	8 SE	7 SE	
Kinder 1	5 ESE	6 ESE	7 ESE	7 SE	7 SE	7 SE	7 SE	5 SE	5 SE	4 SE	3 SE	3 SSE	2 SE	2 E	2 ENE	2 NNE	2 NE	2 NE	2 NE	3 NE	3 NE	4 ENE	5 ENE	6 E	7 ESE	7 ESE	8 SE	8 SE	8 SE	8 SE	8 SE	7 SE	
Greens Bayou	5 ESE	6 ESE	7 SE	7 SE	7 SE	7 SE	7 SE	5 SE	5 SE	4 SE	3 SE	3 SSE	2 SE	2 E	2 ENE	2 NNE	2 NE	2 NE	2 NE	3 NE	3 NE	4 ENE	5 ENE	6 E	7 ESE	7 ESE	8 SE	8 SE	8 SE	8 SE	8 SE	7 SE	
Shell Crude	6 ESE	7 ESE	7 SE	8 SE	8 SE	8 SE	7 SE	5 SE	5 SE	4 SE	3 SE	3 SSE	2 SE	2 E	2 ENE	2 NNE	2 NE	2 NE	2 NE	3 NE	3 NE	4 ENE	5 ENE	6 E	7 ESE	7 ESE	8 SE	8 SE	8 SE	8 SE	8 SE	7 SE	
Lynchburg Ferries	5 ESE	6 ESE	7 SE	8 SE	8 SE	8 SE	7 SE	6 SE	5 SE	4 SE	3 SE	3 SSE	3 SE	3 E	4 ENE	4 NE	3 NE	3 NE	4 NE	4 NE	5 ENE	6 ENE	7 E	8 ESE	9 ESE	9 ESE	10 SE	10 SE	10 SE	10 SE	10 SE	9 SE	
Exxon 3	6 ESE	7 ESE	8 SE	8 SE	8 SE	8 SE	8 SE	6 SE	5 SE	4 SE	4 SE	4 SSE	3 SE	3 E	3 ENE	3 NE	3 NE	3 NE	3 NE	4 NE	4 NE	5 ENE	6 ENE	7 E	8 ESE	9 ESE	10 SE	11 SE	11 SE	11 SE	10 SE	9 SE	
Morgans Point	6 ESE	7 ESE	8 SE	9 SE	9 SE	9 SE	9 SE	8 SE	7 SE	6 SE	5 SE	5 SSE	5 SE	5 E	4 ENE	4 NE	4 NE	4 NE	5 NE	5 NE	6 ENE	7 ENE	7 E	8 ESE	9 ESE	10 SE	11 SE	12 SE	12 SE	12 SE	12 SE	11 SE	
75/76	7 ESE	8 ESE	9 SE	10 SE	10 SE	11 SE	12 SE	12 SSE	11 SSE	9 SSE	8 SSE	7 SSE	6 SSE	6 SE	6 E	5 ENE	5 ENE	5 ENE	6 ENE	6 ENE	7 ENE	8 ENE	8 ENE	9 E	10 ESE	11 ESE	12 SE	13 SE	13 SE	13 SE	14 SE	14 SE	12 SSE
63/64	7 ESE	8 ESE	9 SE	10 SE	10 SE	11 SE	12 SE	12 SSE	11 SSE	9 SSE	8 SSE	7 SSE	6 SSE	6 SE	5 ENE	5 ENE	5 ENE	6 ENE	6 ENE	7 ENE	8 ENE	8 ENE	9 E	10 ESE	11 ESE	12 SE	13 SE	13 SE	13 SE	14 SE	13 SE	12 SSE	
51/52	7 ESE	9 ESE	10 SE	11 SE	11 SE	12 SE	12 SSE	11 SSE	10 SSE	8 SSE	8 SSE	7 SSE	6 SSE	6 SE	5 ENE	5 ENE	5 ENE	6 ENE	6 ENE	7 ENE	8 ENE	8 ENE	9 E	10 ESE	11 ESE	12 SE	13 SE	13 SE	12 SE	11 SE	11 SE	12 SSE	
37/38	8 E	9 ESE	9 ESE	10 SE	10 SE	11 SE	11 SE	10 SE	9 SE	8 SE	8 SE	7 SE	7 SE	5 SE	4 SE	4 SE	5 SE	5 SE	6 SE	6 SE	7 ENE	7 ENE	8 ENE	9 E	10 ESE	11 ESE	12 SE	12 SE	11 SE	11 SE	11 SE	10 SSE	
25/26	9 E	9 ESE	9 ESE	9 SE	9 SE	9 SE	9 SE	8 SE	7 SE	7 SE	7 SE	7 SSE	6 SSE	5 SE	4 SE	4 SE	5 SE	5 SE	6 SE	6 SE	7 ENE	8 ENE	8 ENE	9 E	10 ESE	10 ESE	12 SE	12 SE	11 SE	10 SE	9 SE	9 SSE	
11/12	9 E	9 ESE	9 ESE	9 SE	9 SE	9 SE	9 SE	9 SE	8 SE	8 SE	8 SE	8 SE	7 SE	6 SE	5 SE	5 SE	5 SE	6 SE	6 SE	7 ENE	8 ENE	8 ENE	9 E	10 ESE	10 ESE	12 SE	12 SE	11 SE	10 SE	9 SE	9 SSE		
1 & 2 Bravo	10 ENE	10 E	10 ESE	10 ESE	10 SE	10 SE	10 SE	10 SE	9 SE	9 SE	9 SE	9 SE	9 SE	8 SE	7 SE	6 SE	6 SE	6 SE	7 E	7 E	8 E	9 E	10 E	10 E	11 E	12 ESE	12 ESE	10 SE	10 SE	10 SE	10 SSE		

NOTE: This is automated data that may/may not agree with the official BAM thinking that's found on the daily slides or special visibility report slides. This data should be used as a guide only

Houston Pilots: Mon. 5/29/2023



Forecast Discussion

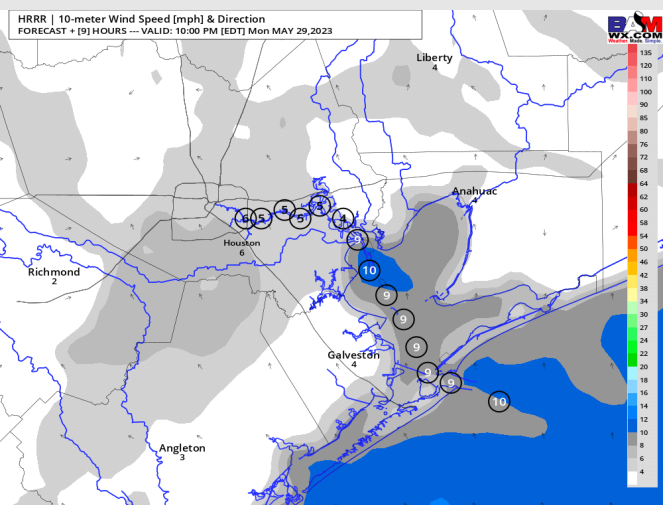
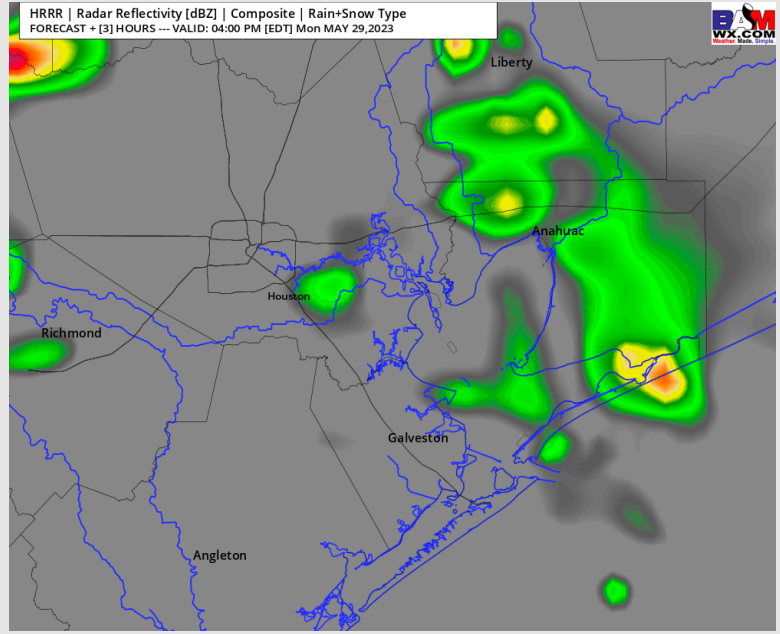
Precip: Targeting a ~20% chance of an isolated shower/thunderstorm to pop up through the mid to late afternoon. Favoring this window to last from 2:30 – 6 PM before tapering off into the evening hours. Any cell would hold the risk for lightning and a locally heavier downpour. Most of the day will stay dry.

Wind: Winds this afternoon will be sustained from the SE at 8 – 13 kts with a few isolated gusts to 15 knots at the boarding station. Towards 7 PM winds will calm slightly to 5 – 10 kts. By midnight winds will be near-calm at 2 – 6 kts, but the Boarding Station will remain at 5 – 10 kts. Gusts *under an isolated cell* could reach 25 knots.

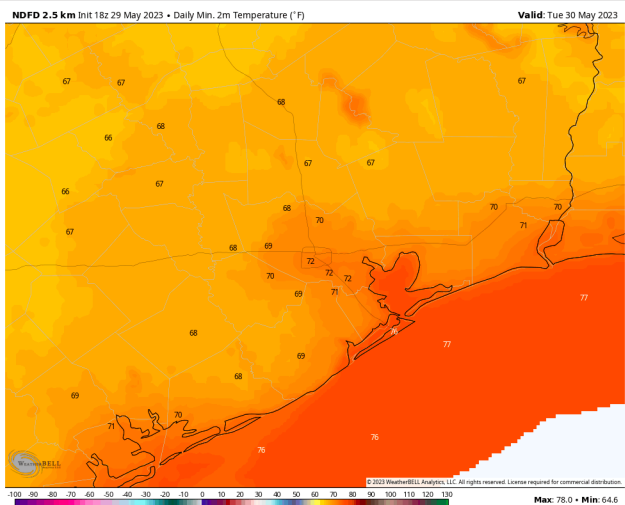
Temps: Low temperatures Tuesday AM will be in the low 70s F north of Morgan's Point and in the mid 70s south of Morgan's Point.

Visibility: Not anticipating any visibility concerns at this time.

Precip Image: 3 PM CT



Wind Speed:
9 PM CT



Low Temps
Tuesday AM

Houston Pilots: Tue. 5/30/2023



Forecast Discussion

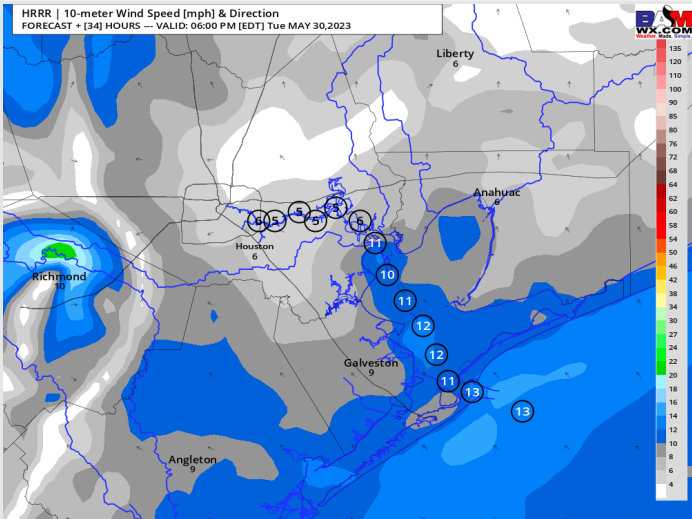
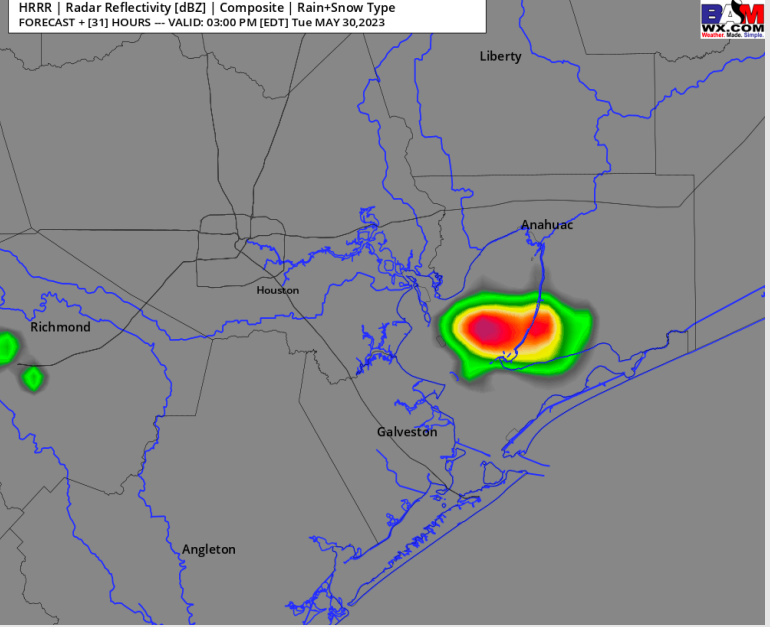
Precip: Tuesday will be very similar to today (Monday) where a 10-20% chance of an isolated pop-up shower/ thunderstorm will be possible, primarily after ~1 PM. Any cells will be capable of a briefly locally heavy downpour, lightning, and very isolated increase in winds.

Wind: Winds pre-9 AM will be out of the SE at 2 - 7 kts for all stations. From 9A - 2P, winds come out of the ENE at 5 - 10 kts. From 2 PM and on, winds are back out of the SE at 6 - 11 kts for most stations, however the boarding station sits 8-13 kts with gusts to 15 kts. Isolated thunderstorms could produce gusts 25-30 knots *if* caught under one of those cells.

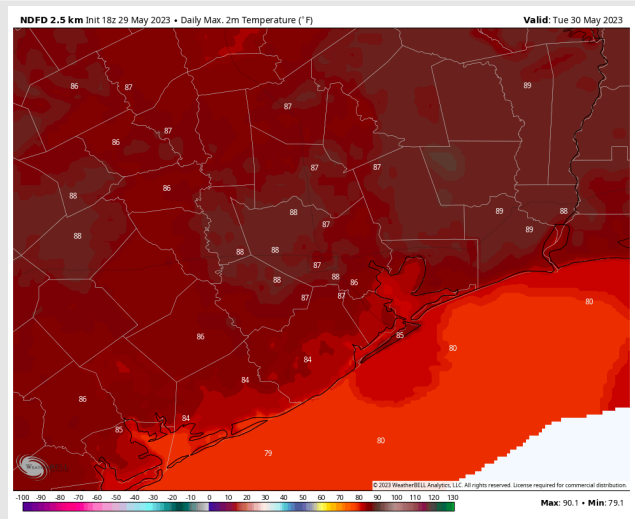
Temps: High temperatures in the low 80s F for stations south of Morgan's Point and in the upper 80s F for stations north of Morgan's Point.

Visibility: Not anticipating visibility concerns at this time.

Precip Image: 2 PM CT



**Wind Speed:
5 PM CT**



**High Temps
Tuesday**

Forecast Discussion

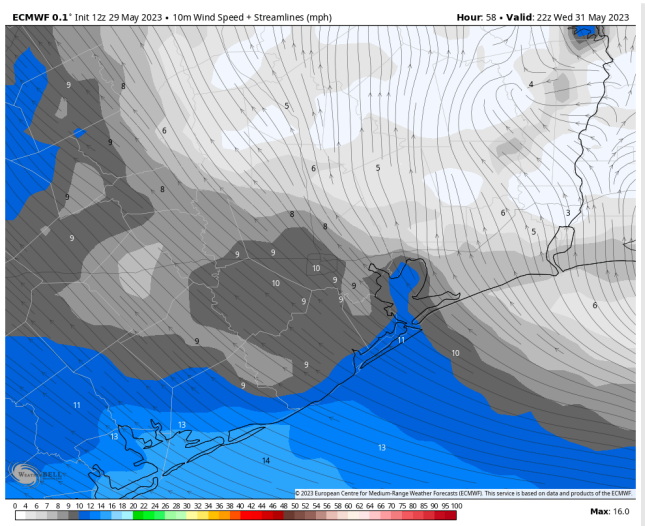
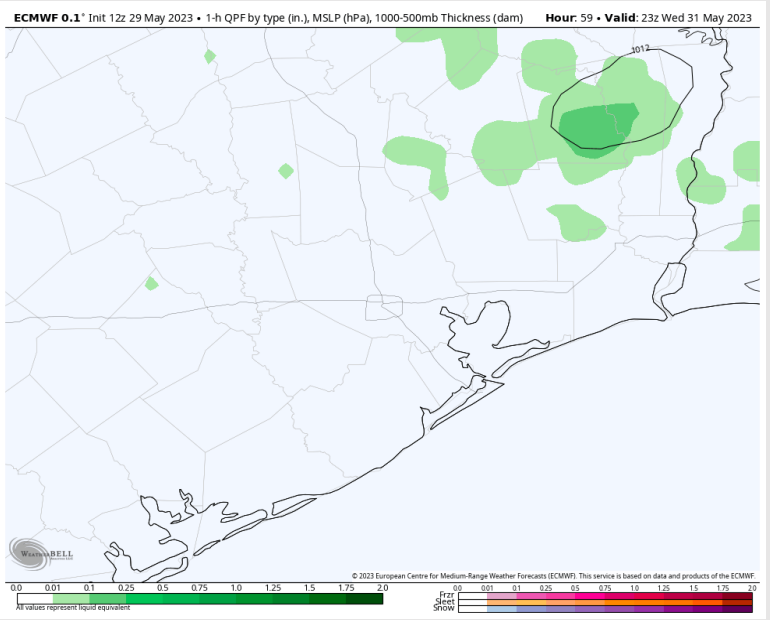
Precip: A 10% chance for a popup will be possible from 3 - 7 PM. However, that risk looks to be confined to areas NE of the stations. Most (if not all) of the day will be dry.

Wind: Sustained winds will be from the SE for the entire day. Winds sit 4 - 8 knots in the AM hours. Winds will then pick up slightly to 5 - 10 kts by 11 AM, then finally 8 - 12 kts by 4 PM.

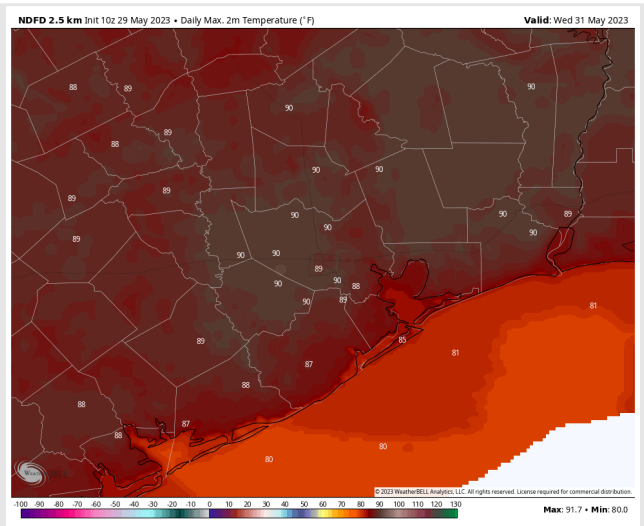
Temps: High temperatures near 80 F at the Boarding Station and in the upper 80s to near 90 F across all other stations.

Visibility: Not anticipating any visibility concerns at this time.

Precip Image: 6 PM CT



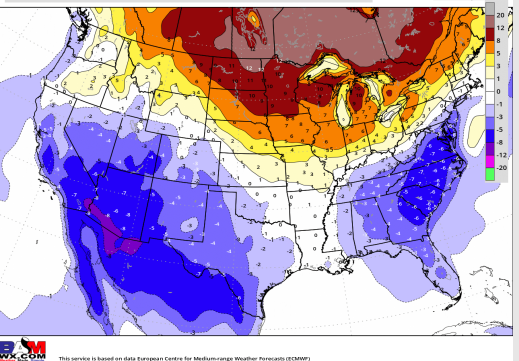
**Wind Speed:
5 PM CT**



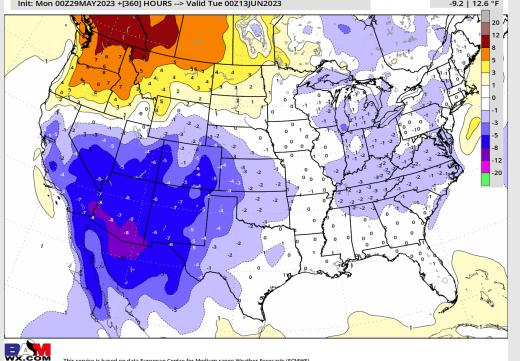
**High Temps
Wednesday**

Houston Pilots: 5/29/23

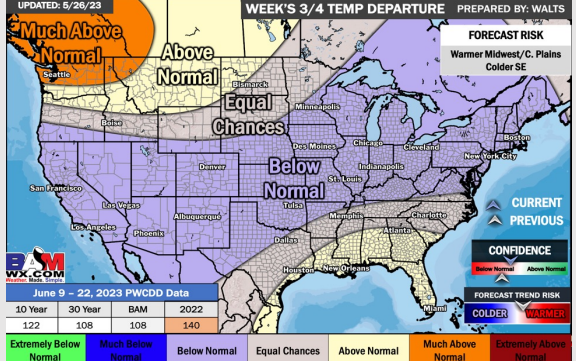
Next 7 Day Temperature Departure



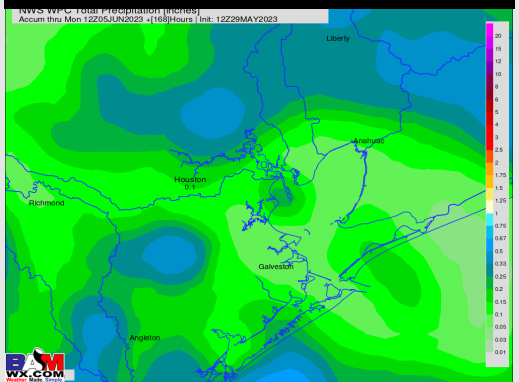
8-14 Day Temperature Departure



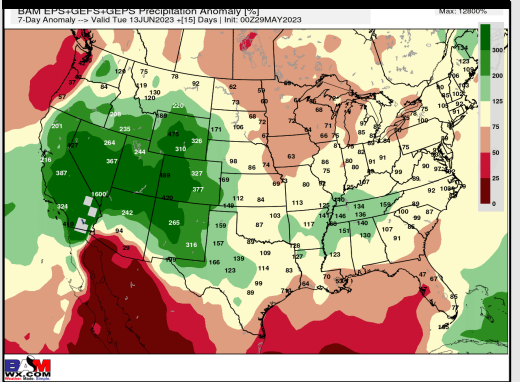
15-30 Day Temperature Departure



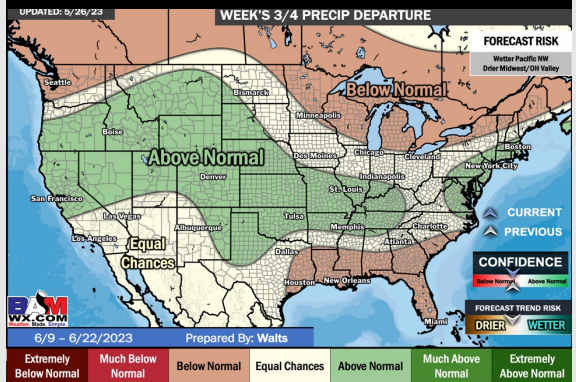
Next 7 Day Total Precipitation



8-14 Day % of Average Precip.



15-30 Day % of Average Precip.



- A few very isolated rain chances over the next 72 hours. Favoring near normal to slightly below normal temperatures over the next week.
- Expecting below normal precipitation chances and near normal normal temperatures for the week 2 timeframe.
- Above normal temperatures and below normal chances for precipitation are favored in the week 3/4 timeframe.