

# Houston Pilots Forecast Package

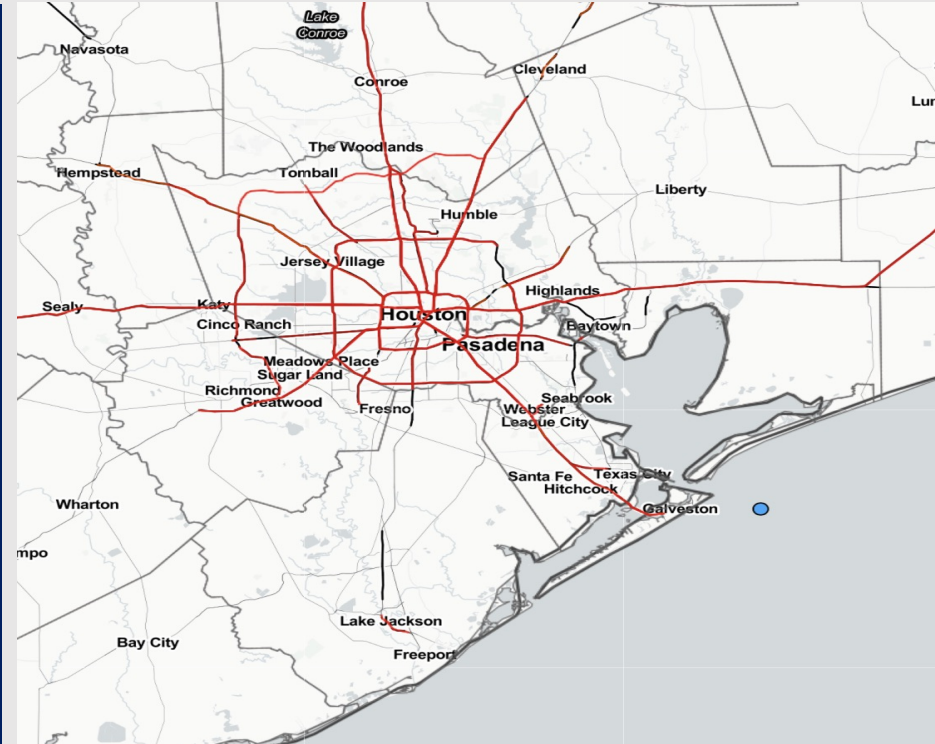


Updated: 6:00 AM CT  
Monday, May 29, 2023

Forecaster: Vince Bryan

## Weather Headlines

- Low end 10-20% isolated shower/thunderstorm chances will be possible over the next few days, with most (if not all) locations staying dry.
- Calmer winds are favored to continue, with occasional periods of winds reaching up to 10 kts.
- Sea fog will not be a concern moving forward.
- No tropical threats to monitor.



**Radar/NWS Alerts: 6:00 AM CT**



As always, please do not hesitate to reach out to us with any forecast questions via the chat option on the Weather Porthole or our on-call number, **(317)-560-8122** press 1 for forecast questions.

# Houston Pilots Extended Range Visibility Report



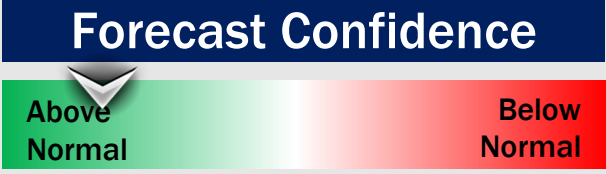
## Thursday 6/1/23

Not anticipating any visibility concerns for Thursday.



## Friday 6/2/23

Not favoring any reduced visibility for Friday.



## Saturday 6/3/23

Not anticipating any visibility concerns on Saturday.



## Chance for Reduced Visibility

Thursday AM	Unlikely
Thursday PM	Unlikely
Friday AM	Unlikely
Friday PM	Unlikely
Saturday AM	Unlikely
Saturday PM	Unlikely

# Houston Pilots Visibility Chart (miles)



## Forecast Confidence



Time	Mon 5am	Mon 6am	Mon 7am	Mon 8am	Mon 9am	Mon 10am	Mon 11am	Mon 12pm	Mon 1pm	Mon 2pm	Mon 3pm	Mon 4pm	Mon 5pm	Mon 6pm	Mon 7pm	Mon 8pm	Mon 9pm	Mon 10pm	Mon 11pm	Tue 12am	Tue 1am	Tue 2am	Tue 3am	Tue 4am	Tue 5am	Tue 6am	Tue 7am	Tue 8am	Tue 9am	Tue 10am	Tue 11am	Tue 12pm	Tue 1pm	Tue 2pm
610 Bridge	10	10	10	10	10	10	10	10	10	10	10	10	10	10	10	10	10	10	10	10	10	10	10	10	10	10	8	10	10	10	10	10	10	10
Kinder 1	10	10	10	10	10	10	10	10	10	10	10	10	10	10	10	10	10	10	10	10	10	10	10	10	10	10	8	10	10	10	10	10	10	10
Greens Bayou	10	10	10	10	10	10	10	10	10	10	10	10	10	10	10	10	10	10	10	10	10	10	10	10	10	10	8	10	10	10	10	10	10	10
Shell Crude	10	10	10	10	10	10	10	10	10	10	10	10	10	10	10	10	10	10	10	10	10	10	10	10	10	10	8	10	10	10	10	10	10	10
Lynchburg Ferries	10	10	10	10	10	10	10	10	10	10	10	10	10	10	10	10	10	10	10	10	10	10	10	10	10	10	8	10	10	10	10	10	10	10
Exxon 3	10	10	10	10	10	10	10	10	10	10	10	10	10	10	10	10	10	10	10	10	10	10	10	10	10	10	8	10	10	10	10	10	10	10
Morgans Point	10	10	10	10	10	10	10	10	10	10	10	10	10	10	10	10	10	10	10	10	10	10	10	10	10	10	10	10	10	10	10	10	10	10
75/76	10	10	10	10	10	10	10	10	10	10	10	10	10	10	10	10	10	10	10	10	10	10	10	10	10	10	10	10	10	10	10	10	10	10
63/64	10	10	10	10	10	10	10	10	10	10	10	10	10	10	10	10	10	10	10	10	10	10	10	10	10	10	10	10	10	10	10	10	10	10
51/52	10	10	10	10	10	10	10	10	10	10	10	10	10	10	10	10	10	10	10	10	10	10	10	10	10	10	10	10	10	10	10	10	10	10
37/38	10	10	10	10	10	10	10	10	10	10	10	10	10	10	10	10	10	10	10	10	10	10	10	10	10	10	10	10	10	10	10	10	10	10
25/26	10	10	10	10	10	10	10	10	10	10	10	10	10	10	10	10	10	10	10	10	10	10	10	10	10	10	10	10	10	10	10	10	10	10
11/12	10	10	10	10	10	10	10	10	10	10	10	10	10	10	10	10	10	10	10	10	10	10	10	10	10	10	10	10	10	10	10	10	10	10
1 & 2 Bravo	10	10	10	10	10	10	10	10	10	10	10	10	10	10	10	10	10	10	10	10	10	10	10	10	10	10	10	10	10	10	10	10	10	10

**NOTE: This is automated data that may/may not agree with the official BAM thinking that's found on the daily slides or special visibility report slides. This data should be used as a guide only**

# Houston Pilots Wind Chart



## Forecast Confidence



## Example

Sustained wind 13 Knots  
Gusts 18 Knots  
Wind from the N

WS: 13  
G:18  
N

Time Knots	Mon 5am	Mon 6am	Mon 7am	Mon 8am	Mon 9am	Mon 10am	Mon 11am	Mon 12pm	Mon 1pm	Mon 2pm	Mon 3pm	Mon 4pm	Mon 5pm	Mon 6pm	Mon 7pm	Mon 8pm	Mon 9pm	Mon 10pm	Mon 11pm	Tue 12am	Tue 1am	Tue 2am	Tue 3am	Tue 4am	Tue 5am	Tue 6am	Tue 7am	Tue 8am	Tue 9am	Tue 10am	Tue 11am	Tue 12pm	Tue 1pm	Tue 2pm
610 Bridge	1	2	2	2	3	4	5	5	6	6	7	7	7	7	7	6	5	4	3	3	2	2	2	2	2	2	3	3	4	5	6	7	7	8
	ENE	NE	NE	NE	ENE	E	E	E	ESE	ESE	ESE	SE	SE	SE	SE	SE	SSE	SSE	SSE	SE	SSE	ESE	SSE	NNE	NE	NNE	NE	NE	ENE	E	E	ESE	ESE	
Kinder 1	1	2	2	2	3	4	5	5	6	7	7	8	8	8	7	6	5	4	3	3	3	2	2	2	2	3	3	4	5	6	7	8	9	
	ENE	NE	NE	NE	ENE	E	E	E	ESE	ESE	ESE	SE	SE	SE	SE	SE	SSE	SSE	SSE	SE	SSE	ESE	SSW	NNE	NNE	NE	NE	ENE	E	E	ESE	ESE		
Greens Bayou	1	2	2	2	3	4	5	5	6	7	8	8	8	8	7	6	5	4	3	3	3	2	2	2	2	3	3	4	5	6	7	8	9	
	ENE	NE	NE	NE	ENE	E	ESE	ESE	ESE	ESE	ESE	SE	SE	SE	SE	SE	SSE	SSE	SSE	SE	SSE	ESE	S	NNE	NNE	NE	NE	ENE	E	E	ESE	ESE		
Shell Crude	2	2	3	3	3	4	5	5	6	7	8	9	8	8	7	6	5	4	3	3	3	3	2	3	2	3	3	4	4	5	6	7	8	9
	ENE	NE	NE	NE	ENE	E	ESE	ESE	ESE	ESE	ESE	SE	SE	SE	SE	SE	SSE	SSE	SSE	SSE	SSE	ESE	S	NNE	NNE	NE	NE	ENE	E	E	ESE	ESE		
Lynchburg Ferries	2	3	3	3	3	4	5	5	6	7	8	9	9	8	8	6	5	4	4	3	3	3	3	3	3	3	4	4	4	5	6	7	8	9
	ENE	NE	NE	NE	ENE	ENE	ESE	ESE	ESE	ESE	SE	SE	SE	SE	SE	SE	SSE	SSE	SSE	SSE	SSE	ESE	SE	NE	NNE	NE	NE	ENE	E	E	ESE	ESE		
Exxon 3	3	3	4	4	4	5	6	7	8	9	10	11	11	11	11	9	8	7	6	6	5	5	5	5	4	4	5	5	6	7	8	9	10	
	ENE	NE	NE	NE	ENE	ESE	ESE	ESE	ESE	SE	SE	SE	SE	SE	SE	SSE	SSE	SSE	SSE	SSE	SSE	ESE	SE	NE	NNE	NE	NE	ENE	E	E	ESE	ESE		
Morgans Point	4	4	5	5	5	6	7	8	9	10	11	12	12	12	12	10	9	8	8	7	7	6	6	6	6	6	7	7	8	8	9	10	11	
	E	ENE	ENE	ENE	ENE	E	ESE	ESE	ESE	ESE	SE	SE	SE	SE	SE	SSE	SSE	SSE	SSE	SSE	SSE	ESE	E	ENE	NE	NE	NE	ENE	E	E	ESE	ESE		
75/76	4	5	6	6	6	6	7	8	9	10	11	12	12	12	11	10	9	8	7	8	8	6	6	6	6	7	8	8	8	9	9	10	11	
	SE	E	E	E	E	E	ESE	ESE	ESE	SE	SE	SE	SE	SE	SSE	SSE	SSE	SSE	SSE	SSE	SSE	ESE	E	ENE	ENE	ENE	ENE	ENE	E	E	ESE	ESE		
63/64	5	5	6	6	6	7	7	8	9	11	12	13	13	13	12	10	9	9	8	8	8	7	6	6	6	6	7	8	9	9	9	10	11	
	SE	SE	ESE	ESE	E	ESE	ESE	ESE	ESE	SE	SE	SE	SE	SE	SSE	SSE	SSE	SSE	SSE	SSE	SSE	ESE	SE	SE	SE	ESE	E	ENE	ENE	E	ESE	ESE		
51/52	5	4	5	6	6	7	7	8	9	10	11	12	12	12	11	9	9	9	8	8	7	6	5	5	5	5	6	8	8	9	9	10	11	
	SE	SE	ESE	ESE	E	ESE	ESE	ESE	ESE	SE	SE	SE	SE	SE	SSE	SSE	SSE	SSE	SSE	SSE	SSE	ESE	SE	SE	SE	ESE	E	ENE	ENE	ENE	E	ESE	ESE	
37/38	4	4	5	5	6	6	7	8	9	10	10	11	11	11	10	8	8	8	8	8	7	6	5	5	5	6	7	8	9	9	10	11	12	
	SE	ESE	ESE	ESE	ESE	ESE	ESE	ESE	ESE	ESE	SE	SE	SE	SE	SE	SSE	SSE	SSE	SE	SE	SE	SE	SE	SE	ESE	ESE	E	E	E	E	ESE	ESE		
25/26	4	4	5	5	5	6	7	8	9	10	10	10	10	10	9	8	7	8	7	7	6	5	5	5	5	5	6	8	9	9	10	11	11	
	SE	ESE	ESE	ESE	ESE	ESE	ESE	ESE	ESE	ESE	SE	SE	SE	SE	SE	SE	SE	SE	SE	SE	SE	SE	SE	SE	ESE	ESE	E	E	E	E	ESE	ESE		
11/12	5	5	5	6	6	6	7	8	9	10	10	10	10	9	8	8	8	7	8	7	6	5	5	5	6	7	8	9	9	10	10	10		
	SE	ESE	ESE	ESE	ESE	ESE	ESE	ESE	ESE	ESE	SE	SE	SE	SE	SE	SE	SE	SE	SE	SE	SE	SE	SE	SE	ESE	ESE	E	E	E	E	ESE	ESE		
1 & 2 Bravo	6	6	7	7	7	8	8	9	9	10	10	11	11	11	10	9	9	9	9	9	8	7	6	6	6	7	8	9	10	10	11	10	10	
	SE	ESE	ESE	ESE	ESE	ESE	E	E	ESE	ESE	ESE	ESE	SE	SE	SE	SE	SE	SE	SE	SE	SE	SE	SE	SE	ESE	ESE	E	E	E	E	ESE	ESE		

NOTE: This is automated data that may/may not agree with the official BAM thinking that's found on the daily slides or special visibility report slides. This data should be used as a guide only

# Houston Pilots: Mon. 5/29/2023



## Forecast Discussion

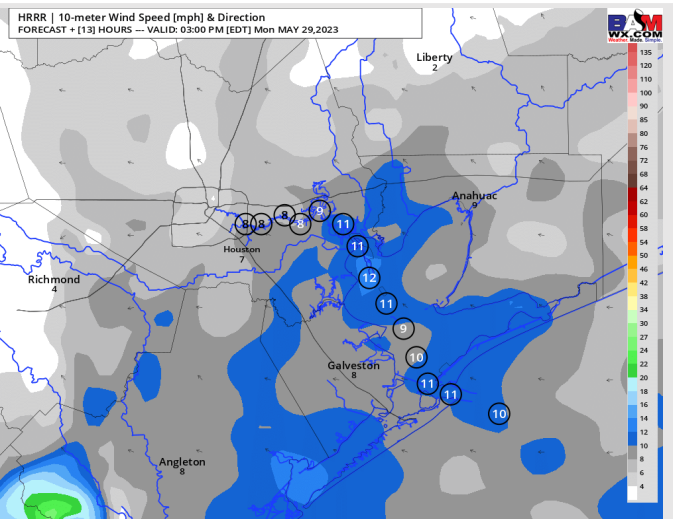
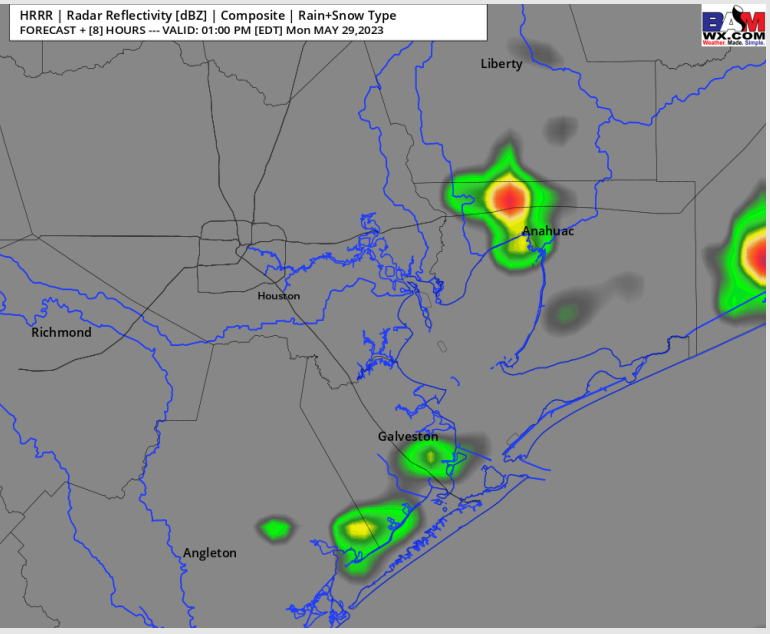
**Precip:** Targeting a ~20% chance of an isolated shower/thunderstorm to pop up through the day today. Best chance will come starting around Noon before tapering off into the evening hours. Any cell would hold the risk for lightning and a locally heavier downpour. Most of the day will stay dry.

**Wind:** Winds will continue at 5 - 10 kts from the SE for all stations. After ~1 PM, winds increase to 8-13 knots with a few isolated gusts to 15 knots at the boarding station. Gusts \*under an isolated cell\* could reach 25 knots.

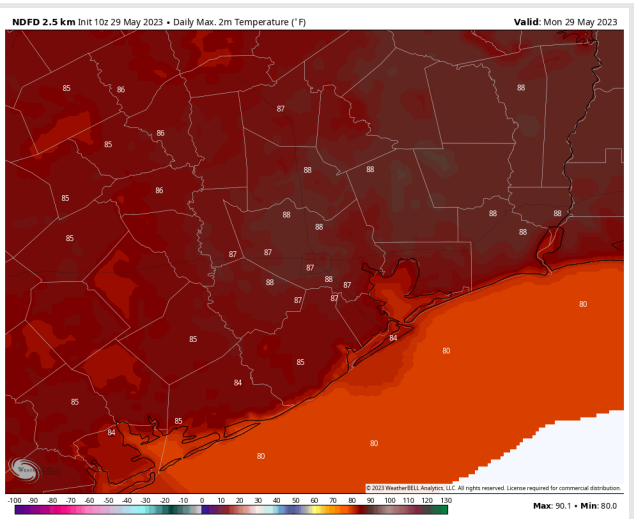
**Temps:** High temperatures will be near 80 F at the Boarding Station and in the upper 80s F for all other stations.

**Visibility:** Not anticipating any visibility concerns at this time.

## Precip Image: 12 PM CT



Wind Speed:  
2 PM CT



High Temps  
Today

# Houston Pilots: Tue. 5/30/2023



## Forecast Discussion

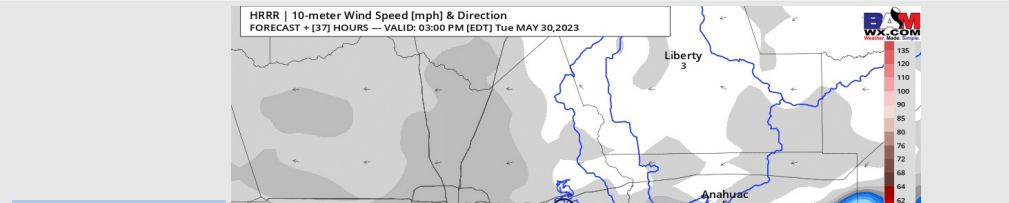
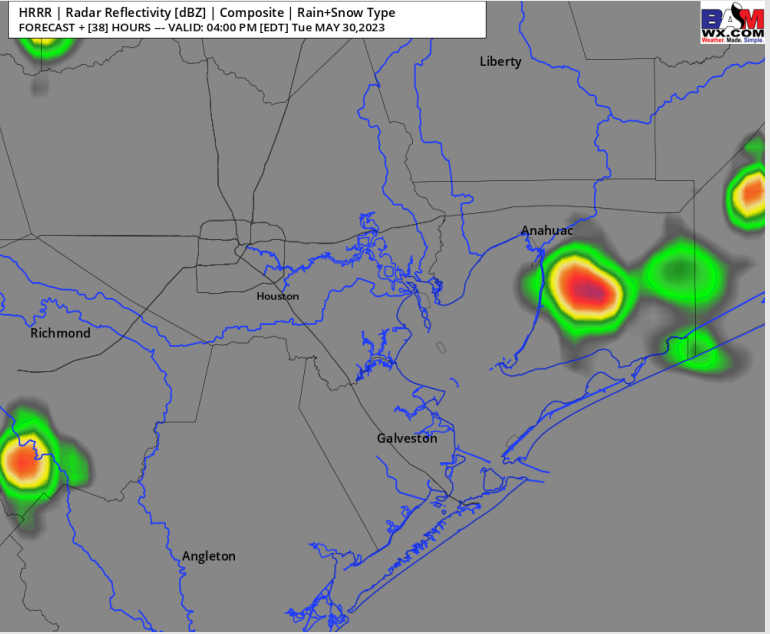
**Precip:** Tuesday will be very similar to today (Monday) where a 10-20% chance of an isolated pop up shower/ thunderstorm will be possible, primarily after ~2 PM. Any cells will be capable of a briefly locally heavy downpour, lightning, and very isolated increase in winds.

**Wind:** Winds pre-9 AM will be out of the SE at 3-8 knots for all stations. From 9A – 2P, winds come out of the NE at 5-10 knots. From 2 PM and on, winds are back out of the SE at 5-10 knots for most stations, however the boarding station sits 8-13 knots with gusts to 15 knots. Isolated thunderstorms could produce gusts 25-30 knots \*if\* caught under one of those cells.

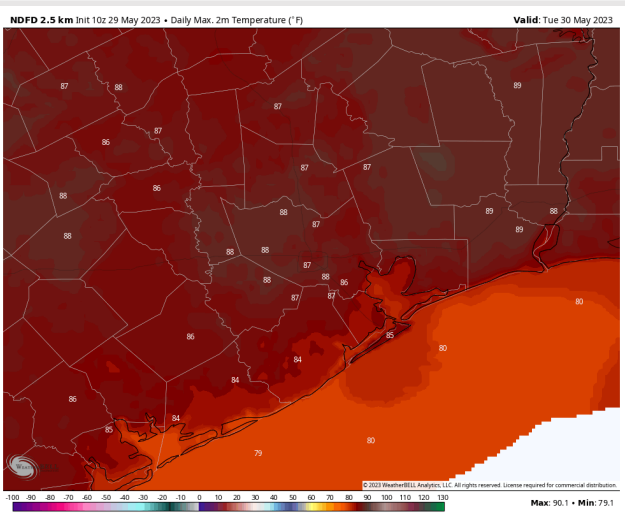
**Temps:** High temperatures in the low 80s F for stations south of Morgan's Point and in the upper 80s F / near 90 F for stations north of Morgan's Point.

**Visibility:** Not anticipating visibility concerns at this time.

## Precip Image: 3 PM CT



**Wind Speed:  
2 PM CT**



**High Temps  
Tuesday**

## Forecast Discussion

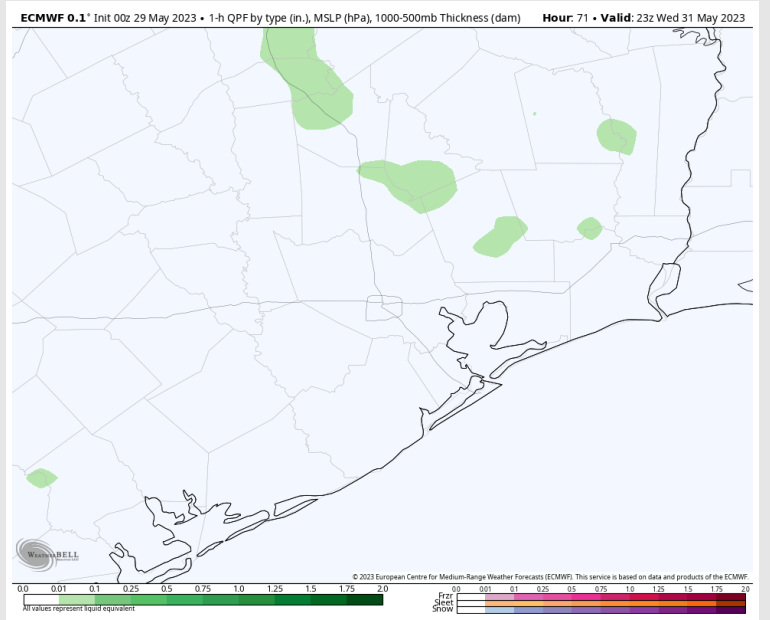
**Precip:** Forecast will be for a 10% PM pop up chance, however right now that threat looks to be confined to areas NE of the stations. Most (if not all) of the day will be dry.

**Wind:** Winds sit 5-10 knots in the AM hours out of the SE with minimal change into the PM hours → winds out of the ESE at 8-13 knots.

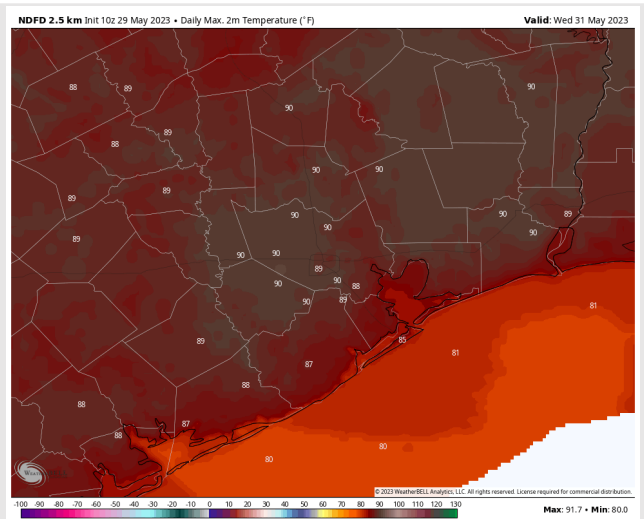
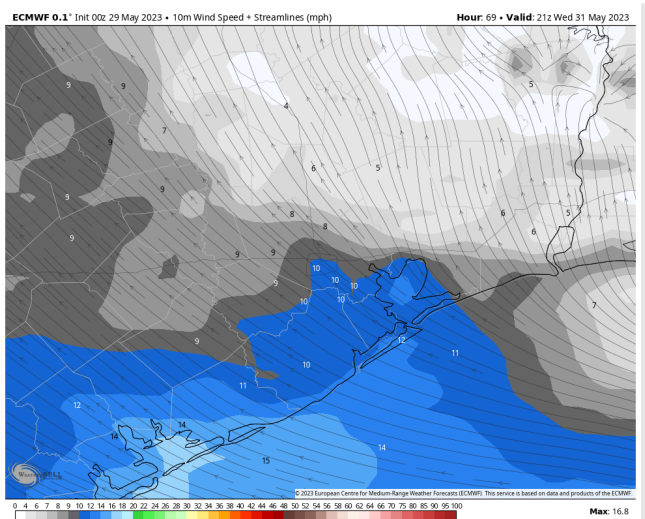
**Temps:** High temperatures near 80 F at the Boarding Station and in the upper 80s to near 90 F across all other stations.

**Visibility:** Not anticipating any visibility concerns at this time.

## Precip Image: 12 PM CT



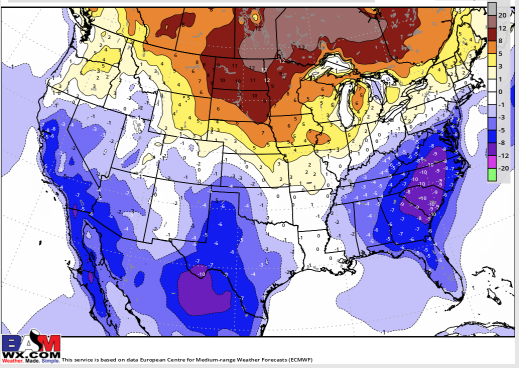
Wind Speed:  
4 PM CT



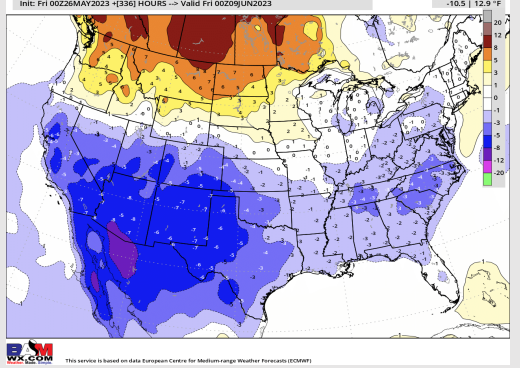
High Temps  
Wednesday

# Houston Pilots: 5/29/23

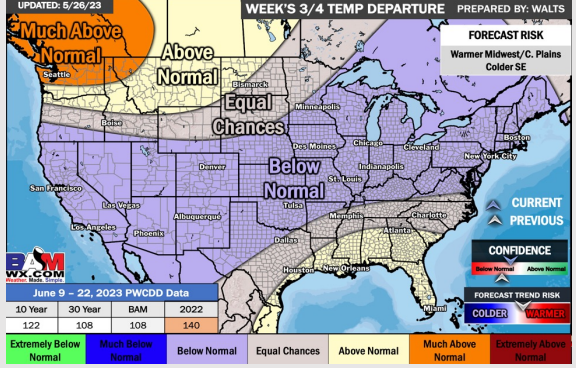
**Next 7 Day Temperature Departure**



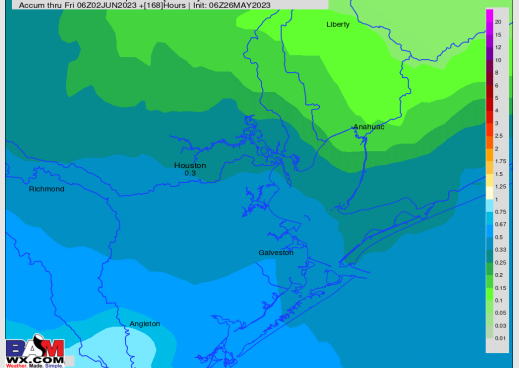
**8-14 Day Temperature Departure**



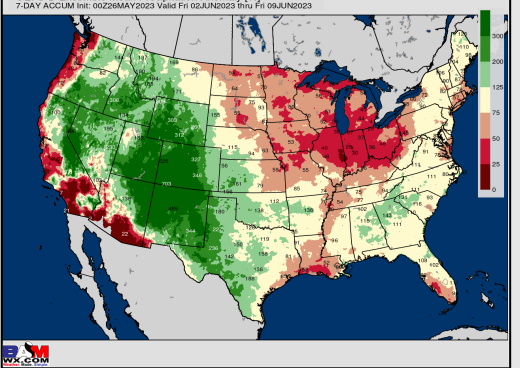
**15-30 Day Temperature Departure**



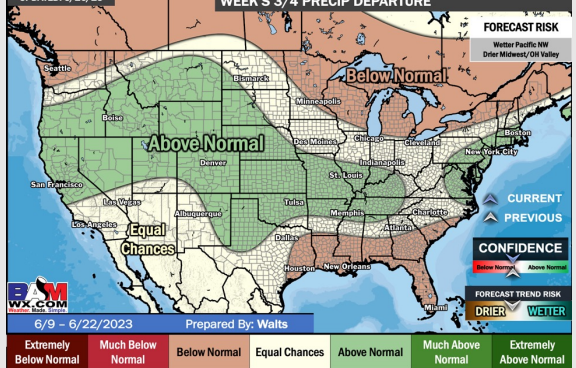
**Next 7 Day Total Precipitation**



**8-14 Day % of Average Precip.**



**15-30 Day % of Average Precip.**



- A few very isolated rain chances over the next couple days. Favoring cooler than normal temperatures over the next week.
- Expecting below normal precipitation chances and slightly below normal temperatures for the week 2 timeframe.
- Above normal temperatures and below normal chances for precipitation are favored in the week 3/4 timeframe.