

Houston Pilots Forecast Package



Updated: 1:00 PM CT

Wednesday, May 3, 2023

Forecaster: Alyssa McClung

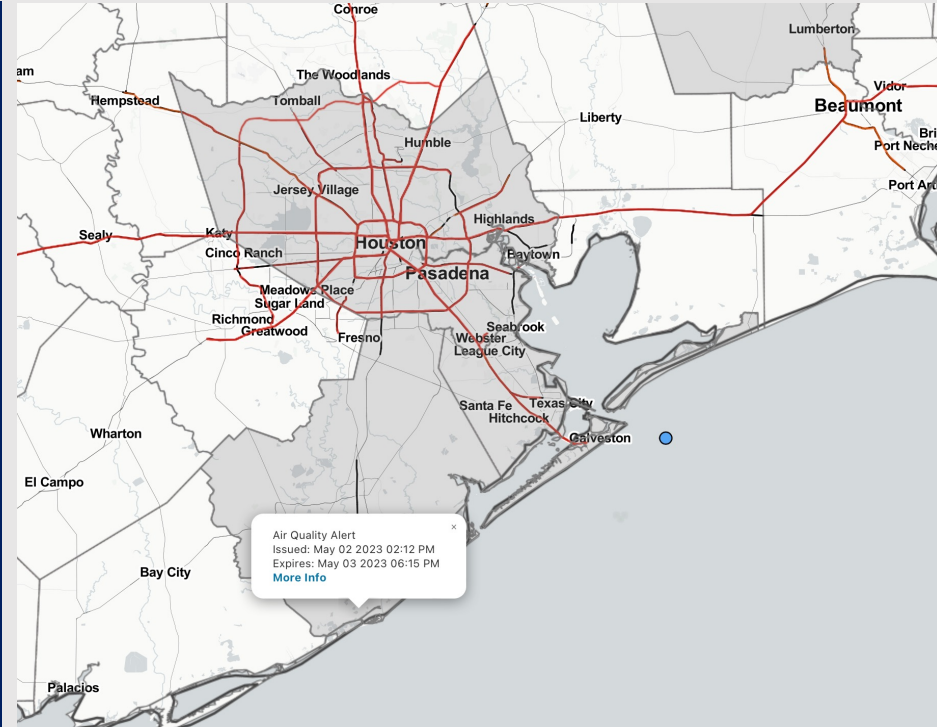
Weather Headlines

➤ Favoring a dry day today, with slight rain chances starting Thu PM and continuing into the weekend. Best overall chances will come Friday evening, and Sunday morning.

➤ Winds remain rather calm over the next few days with the best risk for elevated winds coming Monday/Tuesday.

➤ Threats for sea fog formation look very low with no strong signals over the next several days.

➤ Radiation fog however will be possible THU morning with the best risk of seeing reduced visibility coming along and north of Morgan's Point. More details on the daily slides below.



Radar/NWS Alerts: 1:00 PM CT



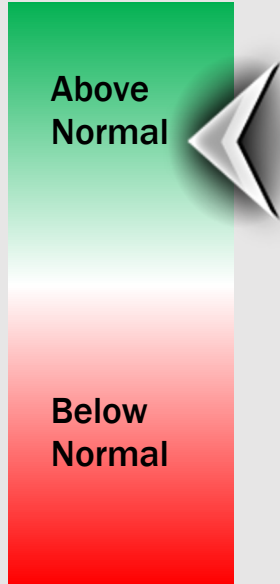
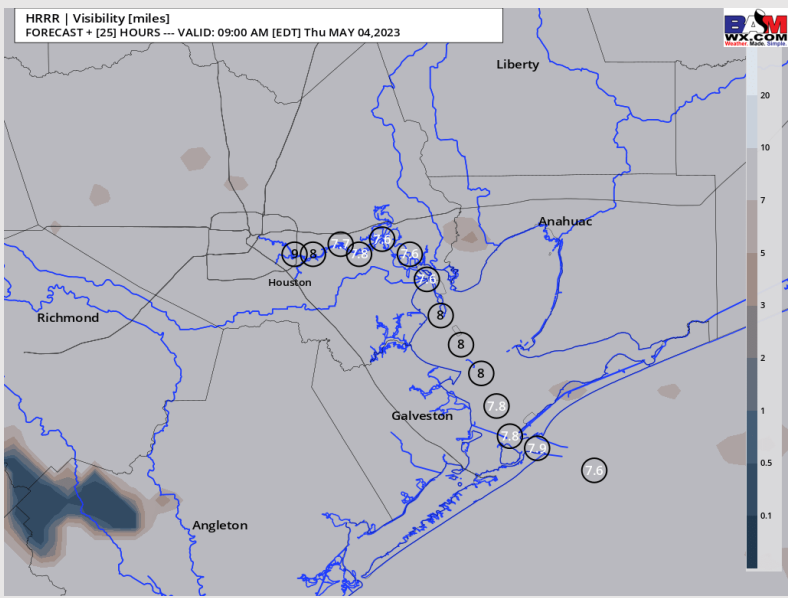
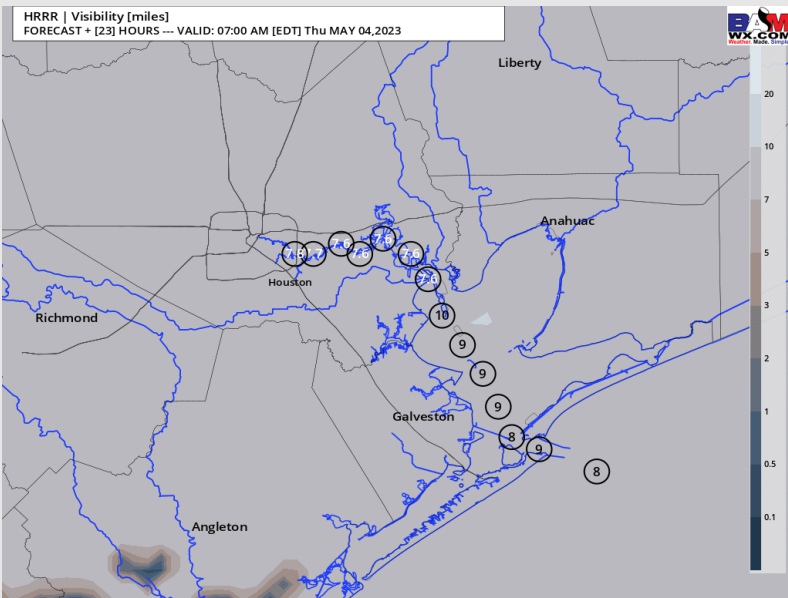
As always, please do not hesitate to reach out to us with any forecast questions via the chat option on the Weather Porthole or our on-call number, **(317)-560-8122** press 1 for forecast questions.

Houston Pilots Visibility Report



6 AM CT Thu VISIBILITY 8 AM CT Thu VISIBILITY

Confidence



TIMEFRAME DISCUSSED	THREAT
3 AM - 9 AM THU	Low

- Very low end risk for patchy radiation fog development around 3 AM Thursday, continuing out through 9 AM that would impact stations N of Morgan's Point.
- Favoring the better radiation fog potential to sit W/SW of stations. Cloud cover may limit fog development through the AM.
- Models struggling to see this low end fog threat.
- No risk for widespread sea fog development.

Houston Pilots Extended Range Visibility Report



Saturday 5/6/23

Reduced visibility does not look to be a concern for Saturday



Monday 5/8/23

Reduced visibility not a concern at this time for Monday



Sunday 5/7/23

While not favored, worth keeping eyes towards Sunday AM for areas of reduced visibility as parameters are borderline for sea fog ahead of a potential front.



Chance for Reduced Visibility

Saturday AM	Unlikely
Saturday PM	Unlikely
Sunday AM	Possible
Sunday PM	Unlikely
Monday AM	Unlikely
Monday PM	Unlikely

Houston Pilots Visibility Chart (miles)



Forecast Confidence



Time	Wed 12pm	Wed 1pm	Wed 2pm	Wed 3pm	Wed 4pm	Wed 5pm	Wed 6pm	Wed 7pm	Wed 8pm	Wed 9pm	Wed 10pm	Wed 11pm	Thu 12am	Thu 1am	Thu 2am	Thu 3am	Thu 4am	Thu 5am	Thu 6am	Thu 7am	Thu 8am	Thu 9am	Thu 10am	Thu 11am	Thu 12pm	Thu 1pm	Thu 2pm	Thu 3pm	Thu 4pm	Thu 5pm	Thu 6pm	Thu 7pm	Thu 8pm	Thu 9pm	Thu 10pm	Thu 11pm			
610 Bridge	10	10	10	10	10	10	10	10	10	10	10	10	10	10	10	10	8	8	6	6	7	10	10	10	10	10	10	10	10	10	10	10	10	10	10	6	7		
Kinder 1	10	10	10	10	10	10	10	10	10	10	10	10	10	10	10	10	8	8	7	7	7	10	10	10	10	10	10	10	10	10	10	10	10	10	10	7	7		
Greens Bayou	10	10	10	10	10	10	10	10	10	10	10	10	10	10	10	10	8	8	7	7	8	10	10	10	10	10	10	10	10	10	10	10	10	10	10	10	8	8	
Shell Crude	10	10	10	10	10	10	10	10	10	10	10	10	10	10	10	10	8	8	7	8	8	10	10	10	10	10	10	10	10	10	10	10	10	10	10	10	8	8	
Lynchburg Ferries	10	10	10	10	10	10	10	10	10	10	10	10	10	10	10	10	8	8	7	8	8	10	10	10	10	10	10	10	10	10	10	10	10	10	10	10	8	8	
Exxon 3	10	10	10	10	10	10	10	10	10	10	10	10	10	10	10	10	9	9	9	8	8	10	10	10	10	10	10	10	10	10	10	10	10	10	10	10	8	8	
Morgans Point	10	10	10	10	10	10	10	10	10	10	10	10	10	10	10	10	9	9	9	8	8	10	10	10	10	10	10	10	10	10	10	10	10	10	10	10	8	8	
75/76	10	10	10	10	10	10	10	10	10	10	10	10	10	10	10	10	10	10	10	8	8	10	10	10	10	10	10	10	10	10	10	10	10	10	10	10	8	8	
63/64	10	10	10	10	10	10	10	10	10	10	10	10	10	10	10	10	10	10	10	10	8	10	10	10	10	10	10	10	10	10	10	10	10	10	10	10	8	8	
51/52	10	10	10	10	10	10	10	10	10	10	10	10	10	10	10	10	10	10	10	10	8	10	10	10	10	10	10	10	10	10	10	10	10	10	10	10	8	8	
37/38	10	10	10	10	10	10	10	10	10	10	10	10	10	10	10	10	10	10	10	10	8	10	10	10	10	10	10	10	10	10	10	10	10	10	10	9	9	8	8
25/26	10	10	10	10	10	10	10	10	10	10	10	10	10	10	10	10	10	10	10	10	8	10	10	10	10	10	10	10	10	10	10	10	10	10	9	9	8	8	
11/12	10	10	10	10	10	10	10	10	10	10	10	10	10	10	10	10	10	10	10	10	8	10	10	10	10	10	10	10	10	10	10	10	10	10	9	9	8	8	
1 & 2 Bravo	10	10	10	10	10	10	10	10	10	10	10	10	10	10	10	10	9	9	9	9	8	9	9	9	9	9	9	9	9	9	9	9	9	9	9	8	8	8	8

NOTE: This is automated data that may/may not agree with the official BAM thinking that's found on the daily slides or special visibility report slides. This data should be used as a guide only

Houston Pilots Wind Chart



Forecast Confidence



Sustained wind 13 Knots
Gusts 18 Knots
Wind from the N

Example

WS: 13
G:18
N

Time Knots	Wed 12pm	Wed 1pm	Wed 2pm	Wed 3pm	Wed 4pm	Wed 5pm	Wed 6pm	Wed 7pm	Wed 8pm	Wed 9pm	Wed 10pm	Wed 11pm	Thu 12am	Thu 1am	Thu 2am	Thu 3am	Thu 4am	Thu 5am	Thu 6am	Thu 7am	Thu 8am	Thu 9am	Thu 10am	Thu 11am	Thu 12pm	Thu 1pm	Thu 2pm	Thu 3pm	Thu 4pm	Thu 5pm	Thu 6pm	Thu 7pm	Thu 8pm	Thu 9pm	Thu 10pm	Thu 11pm	
610 Bridge	7	7	7	6	6	7	8	7	6	5	4	2	2	3	1	2	2	3	3	3	3	4	4	6	7	7	8	9	10	10	11	12	11	10	9	9	8
	ENE	E	E	ESE	ESE	SE	SE	SE	SSE	SSE	S	S	SSE	SSW	SSW	SE	E	E	E	E	E	E	ESE	ESE	ESE	ESE	SE	SE	SE	SE	SE	SE	SSE	SSE	SSE	SSE	
Kinder 1	7	7	7	6	6	7	8	7	6	5	4	2	2	3	1	2	2	3	3	3	4	5	6	8	9	10	11	12	14	15	12	11	10	9	9	8	
	ENE	E	E	ESE	ESE	SE	SE	SE	SSE	SSE	S	S	SSE	SSW	SW	SE	E	ENE	E	E	E	E	E	ESE	ESE	ESE	SE	SE	SE	SE	SE	SE	SSE	SSE	SSE	SSE	
Greens Bayou	7	7	7	5	6	7	8	7	5	5	4	2	2	3	1	2	2	3	3	3	4	5	6	8	9	10	11	12	14	15	12	11	10	9	8	8	
	ENE	E	E	ESE	ESE	SE	SE	SE	SSE	SSE	S	S	SSE	SSW	SW	SE	E	ENE	E	E	E	E	E	ESE	ESE	ESE	SE	SE	SE	SE	SE	SE	SSE	SSE	SSE	SSE	
Shell Crude	7	7	7	5	6	8	8	7	5	5	4	2	2	3	1	2	2	3	3	3	4	5	6	7	8	9	10	11	12	13	12	11	10	9	8	8	
	ENE	E	E	ESE	SE	SE	SE	SE	SSE	SSE	S	S	SSE	SSW	SW	SE	ESE	ENE	E	E	E	E	E	ESE	ESE	SE	SE	SE	SE	SE	SE	SE	SSE	SSE	SSE	SSE	
Lynchburg Ferries	7	7	6	5	7	8	8	7	5	4	3	2	3	3	1	2	2	3	3	4	5	6	7	8	9	10	11	11	13	13	12	11	10	9	8	8	
	ENE	E	ESE	ESE	SE	SSE	SSE	SSE	SSE	SSE	S	S	SSE	SSW	SSW	SSE	ESE	ENE	ENE	E	E	E	E	ESE	ESE	SE	SE	SE	SE	SE	SE	SSE	SSE	SSE	SSE		
Exxon 3	6	7	6	6	8	9	8	7	5	5	4	3	3	4	2	3	3	3	4	4	4	5	6	7	9	9	10	11	12	13	13	13	12	11	10	9	
	ENE	E	ESE	SE	SSE	SSE	SSE	SSE	SSE	S	S	S	S	SSW	SW	SSE	ESE	ENE	ENE	E	E	E	E	ESE	ESE	SE	SE	SE	SE	SE	SE	SSE	SSE	SSE	SSE		
Morgans Point	6	7	6	7	9	10	9	9	8	7	6	5	5	5	3	3	3	4	5	6	6	7	7	8	9	10	11	12	13	14	15	14	13	13	11	10	
	ENE	E	ESE	S	SSE	SSE	SSE	SSE	SSE	S	S	S	S	SSW	SW	SE	E	ENE	E	E	E	E	ESE	ESE	SE	SE	SE	SE	SE	SE	SE	SSE	SSE	SSE	SSE		
75/76	8	7	4	7	10	11	10	10	9	8	6	7	7	4	5	4	4	6	6	8	9	9	9	10	11	12	14	15	17	18	19	18	17	16	14	13	
	ENE	ENE	SE	S	SSE	SSE	SSE	SSE	SSE	S	S	S	S	SSW	SSW	S	SSE	ESE	E	E	E	ESE	ESE	ESE	SE	SE	SE	SE	SE	SE	SE	SSE	SSE	SSE	SSE		
63/64	8	5	5	9	9	11	11	10	9	9	7	7	7	4	5	4	4	5	7	8	9	9	9	10	11	12	14	15	16	17	17	17	17	16	14	13	
	NE	ENE	SSE	SSE	SSE	SSE	SSE	SSE	S	S	S	S	S	SSW	SSW	S	SSE	SE	ESE	ESE	ESE	ESE	ESE	ESE	ESE	SE	SE	SE	SE	SE	SE	SSE	SSE	SSE	SSE		
51/52	6	3	7	10	9	10	10	9	9	8	9	7	7	6	4	5	4	4	5	7	8	9	9	10	11	12	13	14	15	16	17	16	15	14	13		
	NE	E	SE	SE	SSE	SSE	SSE	SSE	S	S	S	S	S	SSW	SSW	S	SSE	SE	ESE	ESE	ESE	ESE	ESE	ESE	ESE	ESE	SE	SE	SE	SE	SE	SSE	SSE	SSE	SSE		
37/38	5	4	10	10	9	10	9	9	8	7	8	7	7	6	4	4	4	4	5	6	8	9	9	10	11	12	13	14	14	15	15	15	14	13	13		
	NE	E	SE	SE	SE	SE	SSE	SSE	S	S	S	S	S	SSW	SSW	SSE	SSE	SE	ESE	ESE	ESE	ESE	ESE	ESE	ESE	ESE	ESE	SE	SE	SE	SE	SE	SSE	SSE	SSE	SSE	
25/26	5	6	10	9	9	9	9	8	7	6	7	6	6	5	3	4	4	4	5	5	7	8	9	10	10	11	12	13	13	13	13	13	13	12	12	11	
	NE	ESE	ESE	SE	SE	SE	SSE	SSE	S	S	S	S	S	SSW	SSW	SSE	SSE	SE	ESE	ESE	ESE	ESE	ESE	ESE	ESE	ESE	ESE	ESE	ESE	ESE	ESE	ESE	ESE	ESE	ESE	ESE	
11/12	6	8	10	9	8	9	8	9	7	7	7	7	6	6	3	5	5	5	5	6	8	8	9	10	10	10	11	12	13	12	13	12	13	12	12	12	
	E	ESE	ESE	SE	SE	SSE	SSE	SSE	S	S	S	S	S	SSW	SSW	SSE	SSE	SE	ESE	ESE	ESE	ESE	ESE	ESE	ESE	ESE	ESE	ESE	ESE	ESE	ESE	ESE	ESE	ESE	ESE	ESE	
1 & 2 Bravo	7	7	9	8	8	8	9	9	9	9	9	9	7	7	4	6	6	6	6	7	8	9	10	10	10	10	10	11	13	14	14	14	15	15	14	14	
	ENE	E	ESE	SE	SE	SSE	SSE	SSE	SSE	SSE	S	S	S	SSW	SSW	SSE	SSE	SE	ESE	ESE	E	ESE	ESE	ESE	ESE	ESE	ESE	ESE	ESE	ESE	ESE	ESE	ESE	ESE	ESE	ESE	

NOTE: This is automated data that may/may not agree with the official BAM thinking that's found on the daily slides or special visibility report slides. This data should be used as a guide only

Houston Pilots: Wed. 5/3/2023



Forecast Discussion

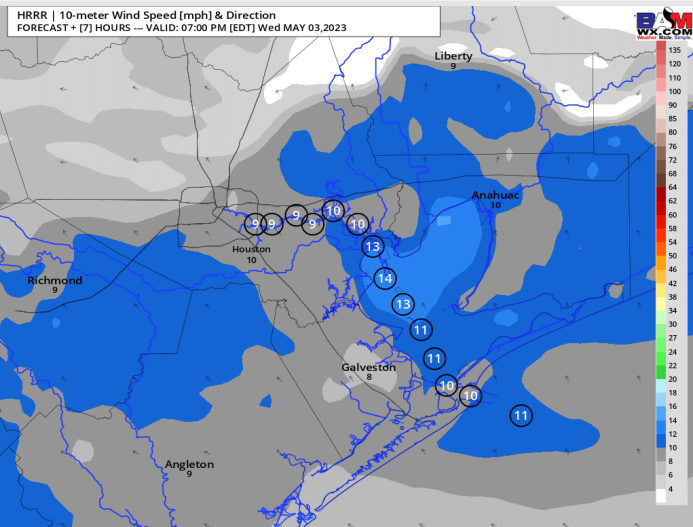
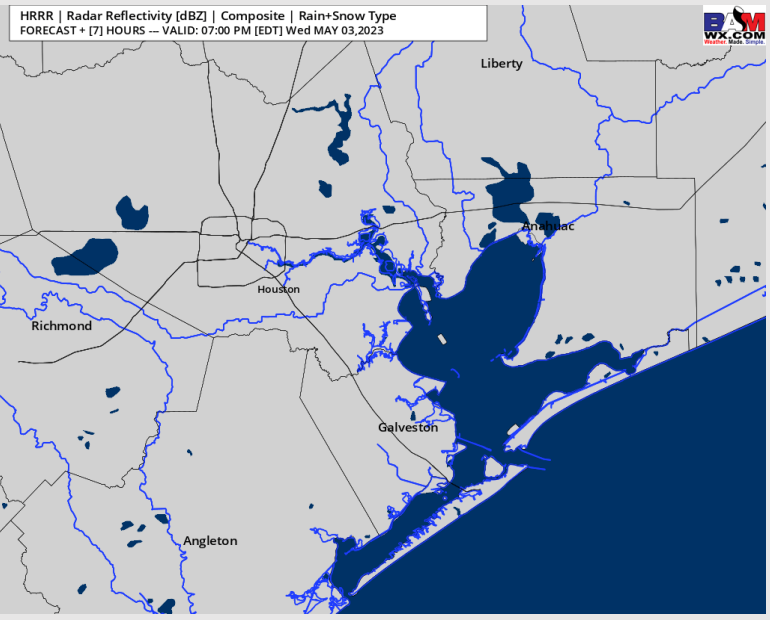
Precip: Favoring dry conditions to continue through the evening and overnight.

Wind: Sustained winds through the afternoon at 8 – 13 kts for all stations. After sunset, winds N of Morgan’s Point will decrease again to 5 – 10 kts. Gusts of 13-15 kts possible through the PM at the boarding station.

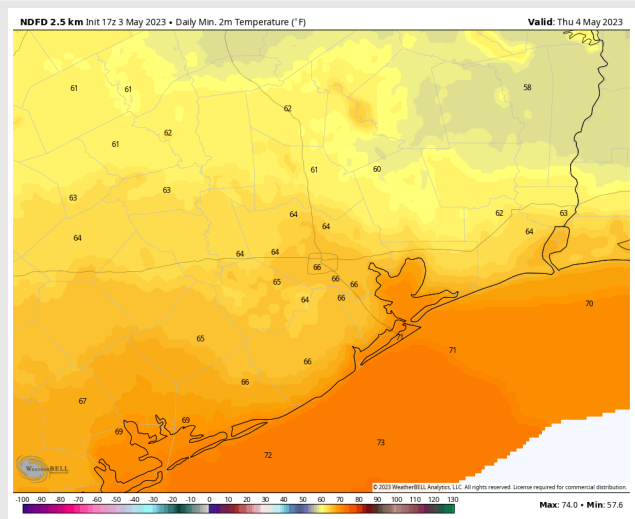
Temps: Low temperatures in the low 70s F for stations S of Morgan’s Point and in the mid 60s F at all other stations.

Visibility: Not anticipating any visibility concerns at this time.

Precip Image: 6 PM CT



Wind Speed:
6 PM CT



Low Temps
Thursday AM

Forecast Discussion

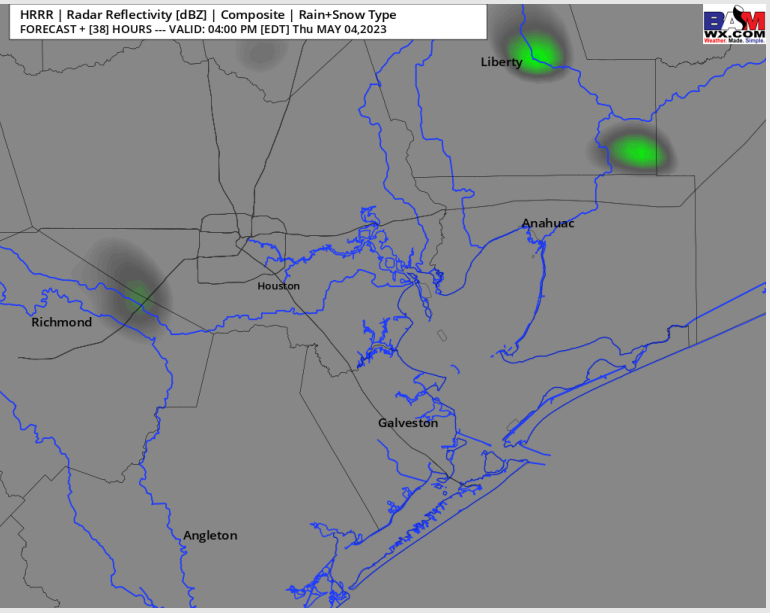
Precip: Favoring dry conditions for the majority of Thursday AM. Towards about 1 PM and through the PM, very isolated shower chances will be present at 10-20% with the bulk of any activity primarily staying north of the stations. Most locations likely stay dry.

Wind: Near calm S/SE winds (3 – 8 kts) will be slowly increasing during the AM hours to 8 – 13 kts by 12 PM. After 7 PM winds increase again south of Morgan’s Point to 10-15 kts. (Winds north of Morgan’s point remain at 8 – 13 kts). A few gusts of up to 15-20 kts will be possible at the boarding station in the afternoon.

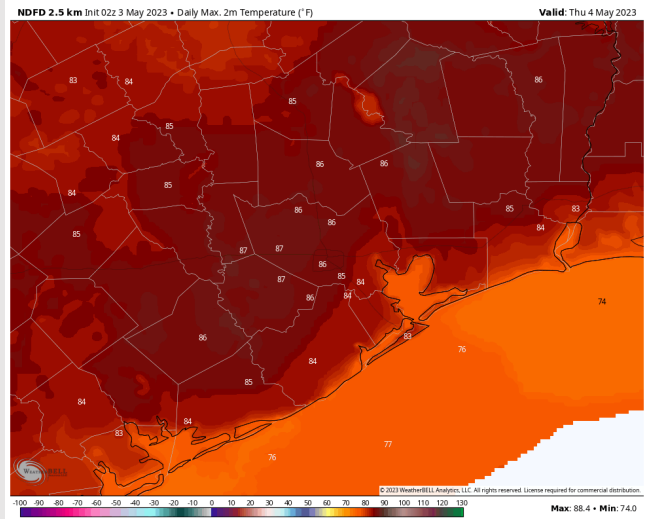
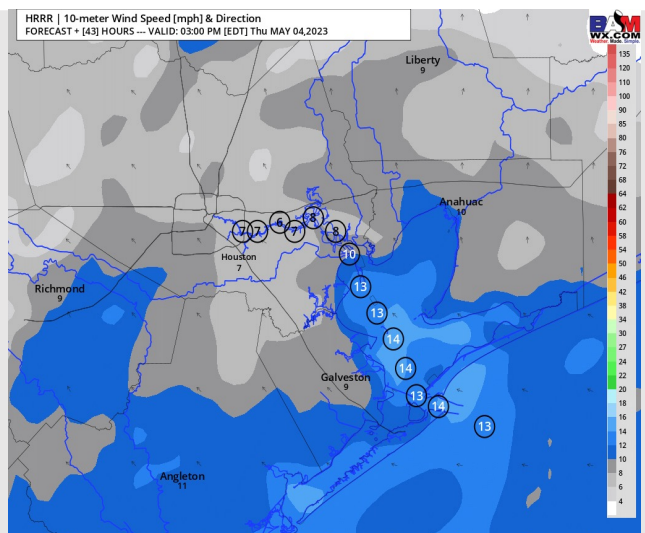
Temps: High temperatures Thursday will be in the mid 80s F north of Morgan’s point and in the mid to upper 70s F south of Morgan’s Point.

Visibility: Areas of radiational fog will be possible along and north of Morgan’s Point during the AM from 3 – 9 AM. This looks to be a very similar threat to what has occurred the past few mornings.

Precip Image: 3 PM CT



Wind Speed:
2 PM CT



High Temps
Thursday

Houston Pilots: Fri. 5/5/2023



Forecast Discussion

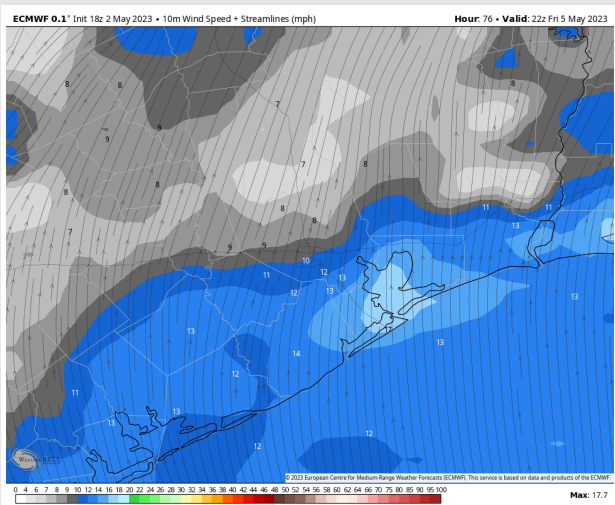
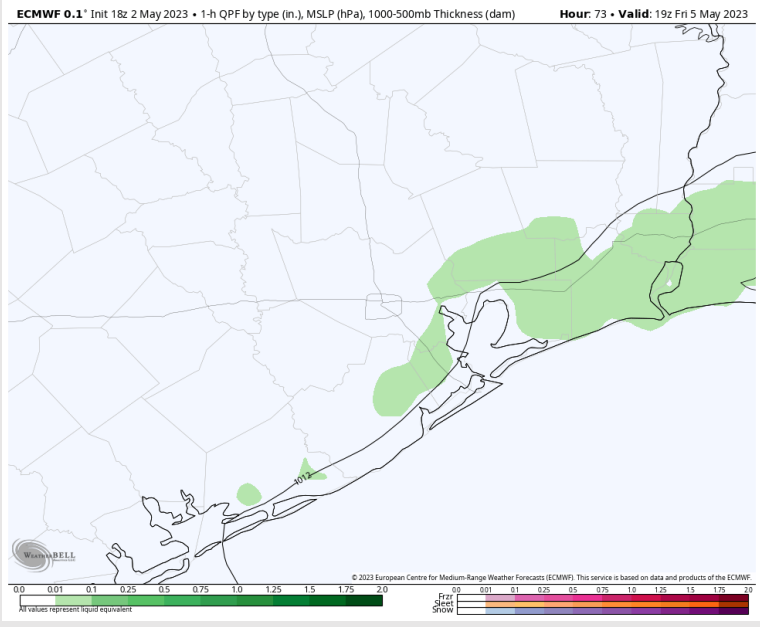
Precip: Favoring dry conditions through the AM hours on Friday. Beginning at 12 PM, 10-20% chance of showers until 9 PM, when chances increase to 30% at 9 PM when showers become more scattered.

Wind: Winds out of the S throughout the entire day on Friday. Winds north of Morgan's Point will be at 8-13 kts throughout the entire day. Winds south of Morgan's Point will start off at 10-15 kts, before slightly increasing to 12-17 kts by 2 PM. Wind gusts of 20-23 kts possible.

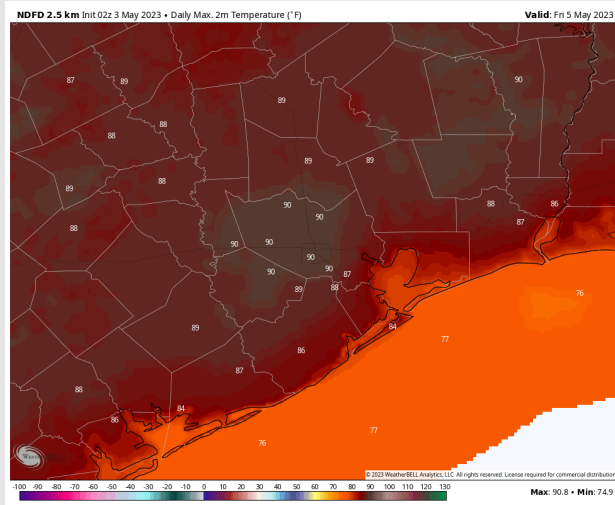
Temps: High temps on Friday to be in the high 80s F/low 90s F north of Morgan's Point and in the mid/upper 70's F south of Morgan's Point.

Visibility: No visibility issues anticipated at this time.

Precip Image: 2 PM CT



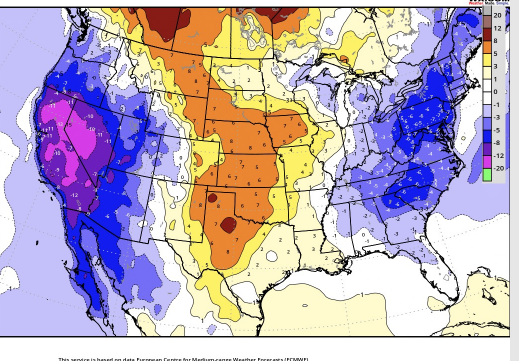
Wind Speed:
5 PM CT



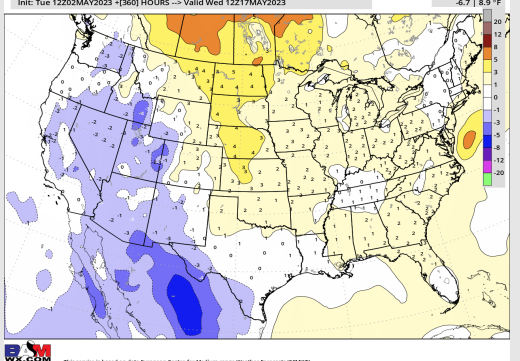
High Temps
Friday

Houston Pilots: 5/3/23

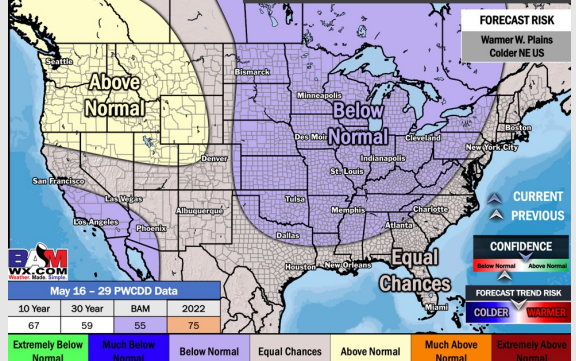
Next 7 Day Temperature Departure



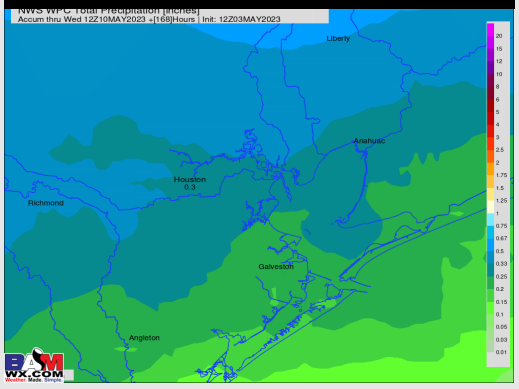
8-14 Day Temperature Departure



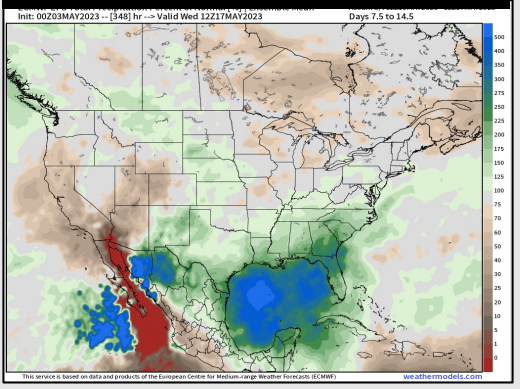
15-30 Day Temperature Departure



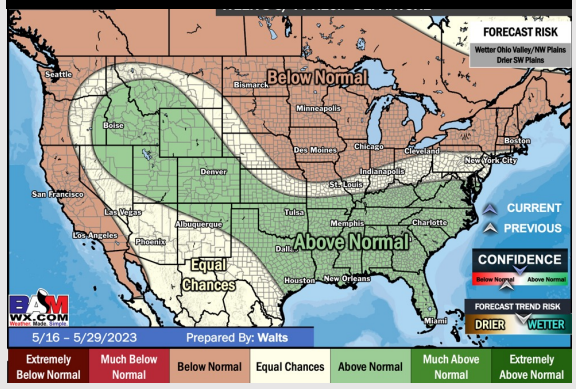
Next 7 Day Total Precipitation



8-14 Day % of Average Precip.



15-30 Day % of Average Precip.



- A couple low end shots for rain tomorrow PM / Fri AM. The next chance will come mid week next week. Temperatures will be slightly above normal for this time of year.
- Expecting above normal precipitation chances and near normal temperatures for the week 2 timeframe.
- Near normal temperatures and above normal chances for precipitation are favored in the week 3/4 timeframe.