

Houston Pilots Forecast Package



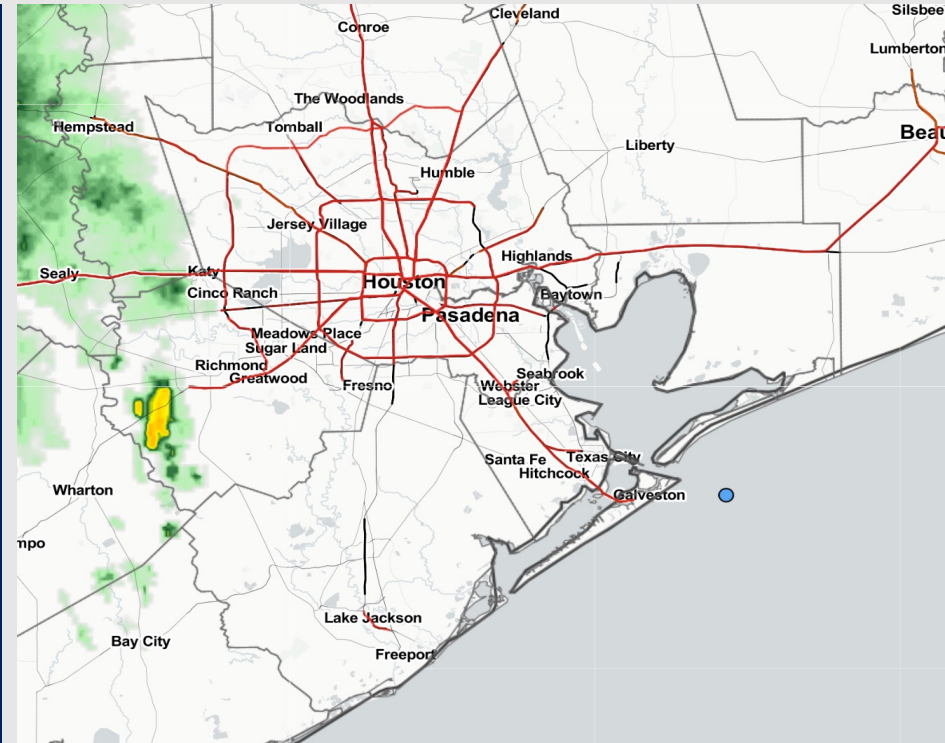
Updated: 7:00 AM CT

Wednesday, May 24, 2023

Forecaster: Tyler Riggles

Weather Headlines

- Low end scattered shower/thunderstorm chances will be possible today and into Thursday, with dry conditions for Friday.
- Calmer winds are favored to continue, with seldom periods of winds reaching up to 10 - 12 kts.
- Not anticipating any issues with sea fog development over the next few days.



Radar/NWS Alerts: 7:00 AM CT



As always, please do not hesitate to reach out to us with any forecast questions via the chat option on the Weather Porthole or our on-call number, **(317)-560-8122** press 1 for forecast questions.

Houston Pilots Extended Range Visibility Report



Saturday 5/27/23

Not anticipating any visibility concerns for Saturday.



Monday 5/29/23

Not anticipating any visibility concerns on Monday.



Sunday 5/28/23

Not favoring any reduced visibility for Sunday.



Chance for Reduced Visibility

| | |
|-------------|----------|
| Saturday AM | Unlikely |
| Saturday PM | Unlikely |
| Sunday AM | Unlikely |
| Sunday PM | Unlikely |
| Monday AM | Unlikely |
| Monday PM | Unlikely |

Houston Pilots Visibility Chart (miles)



Forecast Confidence



| Time | Wed 6am | Wed 7am | Wed 8am | Wed 9am | Wed 10am | Wed 11am | Wed 12pm | Wed 1pm | Wed 2pm | Wed 3pm | Wed 4pm | Wed 5pm | Wed 6pm | Wed 7pm | Wed 8pm | Wed 9pm | Wed 10pm | Wed 11pm | Thu 12am | Thu 1am | Thu 2am | Thu 3am | Thu 4am | Thu 5am | Thu 6am | Thu 7am | Thu 8am | Thu 9am | Thu 10am | Thu 11am | Thu 12pm | Thu 1pm | Thu 2pm |
|-------------------|---------|---------|---------|---------|----------|----------|----------|---------|---------|---------|---------|---------|---------|---------|---------|---------|----------|----------|----------|---------|---------|---------|---------|---------|---------|---------|---------|---------|----------|----------|----------|---------|---------|
| 610 Bridge | 10 | 10 | 10 | 10 | 10 | 10 | 10 | 10 | 10 | 10 | 10 | 10 | 10 | 10 | 10 | 10 | 10 | 10 | 10 | 10 | 10 | 10 | 10 | 10 | 10 | 10 | 10 | 10 | 10 | 10 | 10 | 10 | 10 |
| Kinder 1 | 10 | 10 | 10 | 10 | 10 | 10 | 10 | 10 | 10 | 10 | 10 | 10 | 10 | 10 | 10 | 10 | 10 | 10 | 10 | 10 | 10 | 10 | 10 | 10 | 10 | 10 | 10 | 10 | 10 | 10 | 10 | 10 | 10 |
| Greens Bayou | 10 | 10 | 10 | 10 | 10 | 10 | 10 | 10 | 10 | 10 | 10 | 10 | 10 | 10 | 10 | 10 | 10 | 10 | 10 | 10 | 10 | 10 | 10 | 10 | 10 | 10 | 10 | 10 | 10 | 10 | 10 | 10 | 10 |
| Shell Crude | 10 | 10 | 10 | 10 | 10 | 10 | 10 | 10 | 10 | 10 | 10 | 10 | 10 | 10 | 10 | 10 | 10 | 10 | 10 | 10 | 10 | 10 | 10 | 10 | 10 | 10 | 10 | 10 | 10 | 10 | 10 | 10 | 10 |
| Lynchburg Ferries | 10 | 10 | 10 | 10 | 10 | 10 | 10 | 10 | 10 | 10 | 10 | 10 | 10 | 10 | 10 | 10 | 10 | 10 | 10 | 10 | 10 | 10 | 10 | 10 | 10 | 10 | 10 | 10 | 10 | 10 | 10 | 10 | 10 |
| Exxon 3 | 10 | 10 | 10 | 10 | 10 | 10 | 10 | 10 | 10 | 10 | 10 | 10 | 10 | 10 | 10 | 10 | 10 | 10 | 10 | 10 | 10 | 10 | 10 | 10 | 10 | 10 | 10 | 10 | 10 | 10 | 10 | 10 | 10 |
| Morgans Point | 10 | 10 | 10 | 10 | 10 | 10 | 10 | 10 | 10 | 10 | 10 | 10 | 10 | 10 | 10 | 10 | 10 | 10 | 10 | 10 | 10 | 10 | 10 | 10 | 10 | 10 | 10 | 10 | 10 | 10 | 10 | 10 | 10 |
| 75/76 | 10 | 10 | 10 | 10 | 10 | 10 | 10 | 10 | 10 | 10 | 10 | 10 | 10 | 10 | 10 | 10 | 10 | 10 | 10 | 10 | 10 | 10 | 10 | 10 | 10 | 10 | 10 | 10 | 10 | 10 | 10 | 10 | 10 |
| 63/64 | 10 | 10 | 10 | 10 | 10 | 10 | 10 | 10 | 10 | 10 | 10 | 10 | 10 | 10 | 10 | 10 | 10 | 10 | 10 | 10 | 10 | 10 | 10 | 10 | 10 | 10 | 10 | 10 | 10 | 10 | 10 | 10 | 10 |
| 51/52 | 10 | 10 | 10 | 10 | 10 | 10 | 10 | 10 | 10 | 10 | 10 | 10 | 10 | 10 | 10 | 10 | 10 | 10 | 10 | 10 | 10 | 10 | 10 | 10 | 10 | 10 | 10 | 10 | 10 | 10 | 10 | 10 | 10 |
| 37/38 | 10 | 10 | 10 | 10 | 10 | 10 | 10 | 10 | 10 | 10 | 10 | 10 | 10 | 10 | 10 | 10 | 10 | 10 | 10 | 10 | 10 | 10 | 10 | 10 | 10 | 10 | 10 | 10 | 10 | 10 | 10 | 10 | 10 |
| 25/26 | 10 | 10 | 10 | 10 | 10 | 10 | 10 | 10 | 10 | 10 | 10 | 10 | 10 | 10 | 10 | 10 | 10 | 10 | 10 | 10 | 10 | 10 | 10 | 10 | 10 | 10 | 10 | 10 | 10 | 10 | 10 | 10 | 10 |
| 11/12 | 10 | 10 | 10 | 10 | 10 | 10 | 10 | 10 | 10 | 10 | 10 | 10 | 10 | 10 | 10 | 10 | 10 | 10 | 10 | 10 | 10 | 10 | 10 | 10 | 10 | 10 | 10 | 10 | 10 | 10 | 10 | 10 | 10 |
| 1 & 2 Bravo | 10 | 10 | 10 | 10 | 10 | 10 | 10 | 10 | 10 | 10 | 10 | 10 | 10 | 10 | 10 | 10 | 10 | 10 | 10 | 10 | 10 | 10 | 10 | 10 | 10 | 10 | 10 | 10 | 10 | 10 | 10 | 10 | 10 |

NOTE: This is automated data that may/may not agree with the official BAM thinking that's found on the daily slides or special visibility report slides. This data should be used as a guide only

Houston Pilots Wind Chart



Forecast Confidence



Example

Sustained wind 13 Knots
Gusts 18 Knots
Wind from the N

WS: 13
G:18
N

| Time Knots | Wed 6am | Wed 7am | Wed 8am | Wed 9am | Wed 10am | Wed 11am | Wed 12pm | Wed 1pm | Wed 2pm | Wed 3pm | Wed 4pm | Wed 5pm | Wed 6pm | Wed 7pm | Wed 8pm | Wed 9pm | Wed 10pm | Wed 11pm | Thu 12am | Thu 1am | Thu 2am | Thu 3am | Thu 4am | Thu 5am | Thu 6am | Thu 7am | Thu 8am | Thu 9am | Thu 10am | Thu 11am | Thu 12pm | Thu 1pm | Thu 2pm | |
|-------------------|---------|---------|---------|---------|----------|----------|----------|---------|---------|---------|---------|---------|---------|---------|---------|---------|----------|----------|----------|---------|---------|---------|---------|---------|---------|---------|---------|---------|----------|----------|----------|---------|---------|----|
| 610 Bridge | 3 | 3 | 4 | 4 | 5 | 5 | 6 | 6 | 6 | 6 | 6 | 6 | 6 | 7 | 6 | 5 | 4 | 4 | 3 | 3 | 3 | 4 | 5 | 5 | 6 | 6 | 6 | 6 | 7 | 7 | 7 | 7 | 7 | |
| | 4 | 5 | 5 | 5 | 6 | 6 | 7 | 7 | 8 | 9 | 9 | 8 | 8 | 7 | 7 | 6 | 6 | 6 | 5 | 5 | 5 | 6 | 7 | 7 | 8 | 8 | 8 | 7 | 9 | 8 | 9 | 9 | 8 | |
| | NNE | N | NNE | NNE | NNE | NNE | NNE | NNE | NNE | NNE | NNE | NNE | NNE | NNE | NE | ENE | ENE | ENE | NE | NNE | NE | ENE | ENE | ENE | NE | NE | ENE | ENE | ENE | ENE | ENE | NE | NE | |
| Kinder 1 | 3 | 3 | 4 | 4 | 5 | 5 | 6 | 6 | 6 | 6 | 6 | 7 | 6 | 7 | 6 | 5 | 4 | 4 | 3 | 3 | 3 | 4 | 5 | 5 | 6 | 6 | 6 | 6 | 7 | 7 | 7 | 7 | 7 | |
| | 4 | 5 | 5 | 5 | 6 | 6 | 7 | 7 | 8 | 9 | 9 | 9 | 8 | 8 | 7 | 7 | 6 | 6 | 5 | 5 | 5 | 6 | 7 | 7 | 8 | 8 | 8 | 7 | 9 | 8 | 9 | 9 | 8 | |
| | NNE | N | NNE | NNE | NNE | NNE | NNE | NE | NNE | NNE | NNE | NNE | NNE | NNE | NE | ENE | ENE | ENE | NE | NNE | NE | ENE | ENE | ENE | NE | NE | ENE | ENE | ENE | ENE | NE | NE | | |
| Greens Bayou | 3 | 3 | 4 | 4 | 5 | 5 | 6 | 6 | 6 | 6 | 6 | 7 | 6 | 7 | 6 | 5 | 4 | 4 | 3 | 3 | 4 | 4 | 5 | 5 | 6 | 6 | 6 | 6 | 7 | 7 | 7 | 7 | 7 | |
| | 4 | 5 | 6 | 6 | 6 | 6 | 7 | 7 | 8 | 9 | 9 | 9 | 8 | 8 | 7 | 7 | 6 | 5 | 5 | 5 | 6 | 8 | 8 | 8 | 9 | 9 | 9 | 9 | 9 | 9 | 9 | 9 | 8 | |
| | NNE | N | NNE | NNE | NNE | NNE | NE | NNE | NNE | NNE | NNE | NNE | NNE | NNE | NE | ENE | ENE | ENE | NE | NNE | NE | ENE | ENE | ENE | NE | NE | ENE | ENE | ENE | ENE | ENE | NE | NE | |
| Shell Crude | 3 | 4 | 4 | 4 | 5 | 5 | 6 | 6 | 6 | 6 | 7 | 6 | 6 | 6 | 6 | 5 | 5 | 4 | 3 | 4 | 4 | 5 | 5 | 6 | 6 | 6 | 7 | 7 | 7 | 7 | 7 | 7 | | |
| | 5 | 6 | 6 | 6 | 6 | 6 | 7 | 7 | 8 | 9 | 9 | 9 | 8 | 8 | 7 | 7 | 6 | 5 | 5 | 5 | 6 | 7 | 8 | 8 | 9 | 9 | 9 | 9 | 9 | 9 | 9 | 9 | 8 | |
| | NNE | N | NNE | NNE | NNE | NNE | NE | NE | NNE | NNE | NNE | NNE | NNE | NE | ENE | ENE | ENE | ENE | NE | NE | NE | NE | NE | NE | NE | NE | ENE | ENE | ENE | ENE | NE | NE | | |
| Lynchburg Ferries | 4 | 4 | 4 | 5 | 5 | 5 | 6 | 6 | 6 | 6 | 7 | 7 | 7 | 6 | 6 | 5 | 5 | 5 | 4 | 4 | 4 | 5 | 6 | 6 | 6 | 7 | 7 | 7 | 7 | 7 | 7 | 7 | 7 | |
| | 5 | 6 | 6 | 6 | 6 | 6 | 7 | 7 | 8 | 9 | 9 | 9 | 8 | 8 | 8 | 8 | 8 | 7 | 7 | 5 | 5 | 6 | 7 | 8 | 8 | 9 | 9 | 9 | 9 | 9 | 9 | 9 | 8 | |
| | NNE | N | NNE | NNE | NNE | NE | NE | NE | NNE | NNE | NNE | NNE | NNE | NE | ENE | ENE | ENE | ENE | NE | NE | NE | NE | NE | NE | NE | NE | ENE | ENE | ENE | ENE | NE | NE | | |
| Exxon 3 | 4 | 5 | 5 | 5 | 5 | 5 | 5 | 5 | 5 | 6 | 6 | 6 | 6 | 7 | 6 | 6 | 6 | 5 | 4 | 4 | 5 | 6 | 6 | 6 | 7 | 7 | 7 | 7 | 7 | 7 | 7 | 7 | 7 | |
| | 6 | 7 | 7 | 7 | 6 | 6 | 7 | 7 | 8 | 9 | 9 | 9 | 8 | 9 | 9 | 8 | 8 | 7 | 6 | 6 | 7 | 8 | 9 | 9 | 10 | 9 | 9 | 9 | 9 | 9 | 9 | 9 | 9 | |
| | NNE | N | NNE | NNE | NNE | NE | NE | NE | NE | NNE | NNE | NNE | NE | NE | ENE | ENE | ENE | ENE | NE | NE | NE | NE | NE | NE | NE | NE | ENE | ENE | ENE | ENE | NE | NE | | |
| Morgans Point | 5 | 6 | 6 | 6 | 6 | 5 | 5 | 5 | 6 | 6 | 6 | 7 | 7 | 8 | 7 | 7 | 6 | 6 | 5 | 6 | 6 | 7 | 8 | 8 | 9 | 9 | 9 | 9 | 9 | 9 | 8 | 8 | 7 | 8 |
| | 7 | 8 | 8 | 7 | 7 | 7 | 7 | 8 | 8 | 9 | 9 | 9 | 9 | 10 | 9 | 9 | 8 | 7 | 7 | 7 | 8 | 9 | 10 | 11 | 11 | 11 | 11 | 11 | 10 | 9 | 9 | 10 | 10 | |
| | NNE | NNE | NNE | NNE | NNE | NE | ENE | ENE | ENE | ENE | E | E | ENE | ENE | ENE | ENE | ENE | ENE | ENE | ENE | NE | NE | NE | NE | NE | NE | ENE | ENE | ENE | ENE | ENE | ENE | | |
| 75/76 | 7 | 8 | 8 | 8 | 7 | 6 | 5 | 5 | 6 | 7 | 7 | 8 | 9 | 10 | 9 | 8 | 7 | 6 | 7 | 8 | 8 | 9 | 10 | 11 | 12 | 13 | 13 | 12 | 12 | 11 | 9 | 8 | 8 | 8 |
| | 8 | 9 | 9 | 9 | 8 | 7 | 8 | 8 | 9 | 10 | 10 | 10 | 11 | 11 | 11 | 9 | 9 | 8 | 7 | 8 | 9 | 10 | 11 | 12 | 14 | 14 | 14 | 14 | 12 | 12 | 11 | 10 | 11 | 11 |
| | NNE | NNE | NNE | NNE | NNE | NE | ENE | ENE | ENE | E | ESE | SE | ESE | ESE | NE | ENE | ENE | ENE | ENE | ENE | ENE | ENE | ENE | NE | NE | ENE | NE | ENE | ENE | ENE | ENE | ENE | ENE | |
| 63/64 | 7 | 8 | 9 | 9 | 8 | 7 | 5 | 5 | 6 | 6 | 7 | 8 | 9 | 10 | 9 | 8 | 8 | 7 | 7 | 7 | 8 | 10 | 11 | 13 | 14 | 14 | 14 | 13 | 12 | 11 | 10 | 8 | 8 | 8 |
| | 7 | 9 | 9 | 10 | 8 | 8 | 7 | 8 | 9 | 10 | 10 | 10 | 10 | 11 | 10 | 9 | 8 | 7 | 8 | 9 | 11 | 12 | 14 | 15 | 15 | 15 | 15 | 13 | 12 | 11 | 10 | 11 | 11 | |
| | NNE | NNE | NNE | NNE | NNE | NE | NE | ENE | NE | ENE | ESE | SE | E | SE | NE | ENE | ENE | E | ENE | ENE | ENE | ENE | NE | ENE | ENE | ENE | ENE | ENE | ENE | NE | NE | NE | ENE | |
| 51/52 | 6 | 8 | 8 | 8 | 8 | 7 | 5 | 5 | 6 | 6 | 7 | 8 | 9 | 9 | 8 | 8 | 7 | 7 | 7 | 7 | 7 | 9 | 11 | 12 | 13 | 13 | 12 | 10 | 10 | 8 | 7 | 8 | 8 | |
| | 7 | 8 | 9 | 9 | 8 | 7 | 7 | 8 | 9 | 9 | 10 | 10 | 10 | 10 | 9 | 9 | 8 | 7 | 7 | 7 | 7 | 8 | 10 | 12 | 13 | 14 | 15 | 14 | 13 | 11 | 10 | 10 | 10 | 10 |
| | NNE | NNE | NNE | NNE | NNE | NE | NE | NE | NE | ENE | SE | SE | E | SSE | NE | ENE | ENE | E | ENE | ENE | ENE | NE | NE | ENE | ENE | ENE | ENE | ENE | NE | NE | NE | NE | E | |
| 37/38 | 6 | 7 | 8 | 8 | 8 | 7 | 5 | 5 | 5 | 6 | 7 | 8 | 8 | 8 | 7 | 7 | 6 | 6 | 6 | 6 | 6 | 7 | 8 | 10 | 11 | 12 | 12 | 12 | 10 | 10 | 8 | 8 | 8 | |
| | 6 | 8 | 9 | 9 | 9 | 7 | 7 | 7 | 8 | 8 | 9 | 9 | 8 | 9 | 8 | 8 | 7 | 7 | 7 | 7 | 7 | 9 | 11 | 12 | 13 | 14 | 13 | 12 | 11 | 11 | 10 | 10 | 10 | |
| | E | NNE | NNE | NNE | NNE | NE | NE | NE | ENE | SE | SE | SE | SSE | E | NE | ENE | E | E | ENE | ENE | ENE | NE | NE | NE | ENE | ENE | ENE | ENE | ENE | ENE | ENE | ENE | ENE | |
| 25/26 | 5 | 6 | 7 | 7 | 8 | 7 | 5 | 5 | 5 | 6 | 7 | 7 | 7 | 7 | 6 | 6 | 5 | 6 | 6 | 6 | 6 | 6 | 7 | 9 | 10 | 10 | 11 | 10 | 10 | 10 | 9 | 9 | 9 | |
| | 6 | 7 | 8 | 8 | 9 | 7 | 7 | 7 | 7 | 7 | 8 | 8 | 7 | 9 | 7 | 8 | 7 | 7 | 7 | 7 | 7 | 8 | 10 | 11 | 11 | 12 | 11 | 12 | 11 | 11 | 10 | 11 | 10 | |
| | SSW | E | N | NNE | NNE | NNE | NE | NE | ENE | E | SE | SE | SSE | SSE | ESE | NE | ENE | ENE | ENE | ENE | ENE | NE | NE | NE | ENE | ENE | ENE | ENE | ENE | ENE | ENE | ENE | E | |
| 11/12 | 5 | 7 | 8 | 8 | 8 | 7 | 6 | 5 | 5 | 6 | 6 | 7 | 7 | 7 | 6 | 6 | 6 | 6 | 6 | 6 | 6 | 7 | 8 | 9 | 10 | 10 | 11 | 11 | 11 | 10 | 9 | 9 | 9 | |
| | 6 | 7 | 8 | 8 | 8 | 9 | 7 | 7 | 7 | 7 | 8 | 8 | 7 | 8 | 7 | 8 | 7 | 7 | 7 | 7 | 7 | 8 | 9 | 10 | 11 | 12 | 12 | 12 | 11 | 11 | 11 | 11 | 10 | |
| | S | E | N | NNE | NNE | NNE | NE | ENE | E | ESE | SE | SSE | SSE | SSE | E | NE | NE | ENE | ENE | ENE | ENE | NE | NE | NE | ENE | ENE | ENE | ENE | ENE | ENE | ENE | E | E | |
| 1 & 2 Bravo | 7 | 8 | 9 | 9 | 8 | 8 | 6 | 5 | 5 | 5 | 6 | 7 | 7 | 7 | 7 | 7 | 7 | 7 | 8 | 7 | 8 | 9 | 10 | 11 | 13 | 13 | 13 | 13 | 12 | 11 | 10 | 10 | 10 | |
| | 7 | 9 | 10 | 10 | 9 | 8 | 7 | 7 | 6 | 7 | 7 | 8 | 8 | 8 | 8 | 9 | 9 | 9 | 8 | 8 | 8 | 10 | 10 | 12 | 13 | 14 | 14 | 14 | 13 | 12 | 12 | 11 | 11 | |
| | SSE | N | N | NNE | NNE | NNE | NE | ENE | E | SE | SSE | SSE | SSE | SSE | SE | NE | NE | ENE | ENE | ENE | ENE | NE | NE | NE | NE | ENE | ENE | ENE | ENE | ENE | ENE | ENE | E | |

NOTE: This is automated data that may/may not agree with the official BAM thinking that's found on the daily slides or special visibility report slides. This data should be used as a guide only

Forecast Discussion

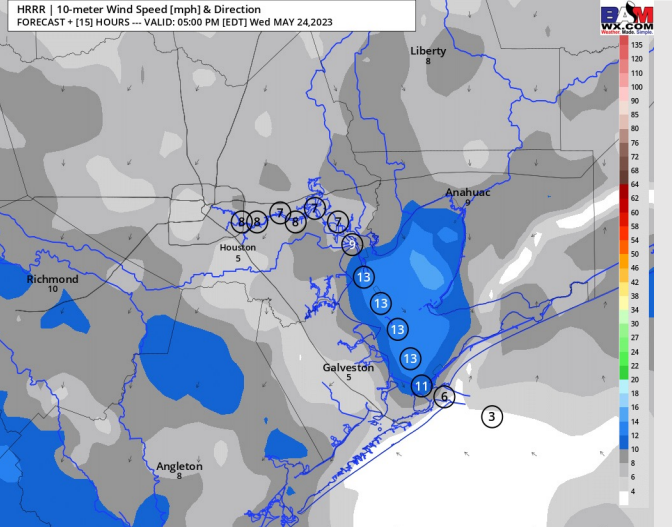
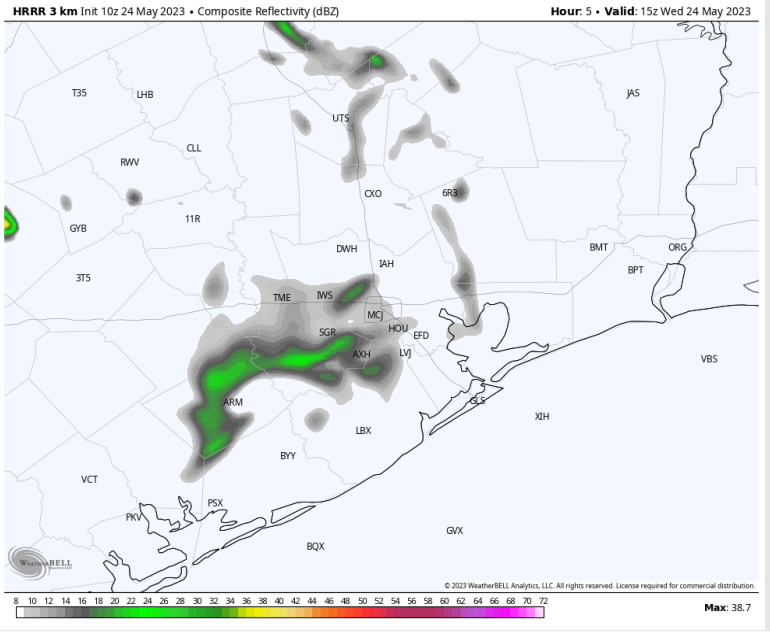
Precip: Expecting ongoing system currently NW of the Houston Metro area to weaken as it works SE, reaching the stations N of Morgan's Point around 10 AM. Rain chances at that time will be light to moderate scattered showers and are expected to quickly dissipate by 11 AM. After this point, chances for showers and storms will be scattered until 11 PM, with a 30% chance to impact stations. Better rain chances will likely remain ENE of the bay area.

Wind: Light NE winds will start at 3 - 7 kts across all stations. Winds will then veer from the SE by 4 PM and will increase slightly south of Morgan's Point to 6 - 11 kts.

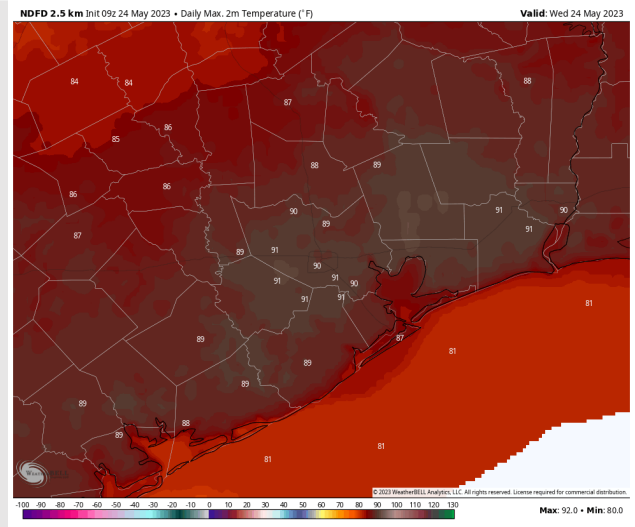
Temps: High temperatures will be in the low 80s F at the Boarding Station and in the upper 80s near 90 F for all other stations today.

Visibility: Not anticipating visibility concerns at this time.

Precip Image: 10 AM CT



Wind Speed:
4 PM CT



High Temps
Today

Houston Pilots: Thu. 5/25/2023



Forecast Discussion

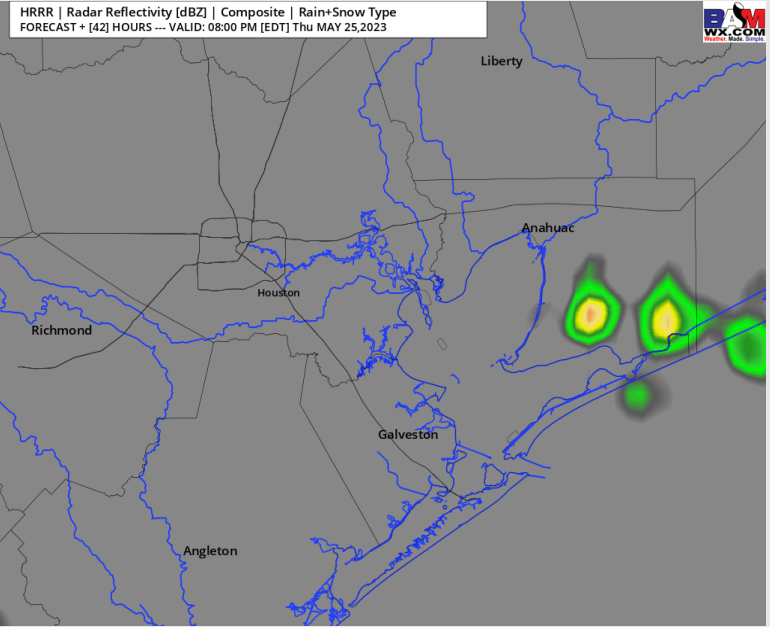
Precip: Favoring dry conditions Thursday leading up until ~2PM, where there will be a 30% chance scattered showers and storms to impact stations. Chances for lightning are possible with storms. After 6 PM favoring better moisture chances to drift to the ENE, prompting dry conditions for the evening.

Wind: Winds will be in variable directions for the majority of Thursday, with favorability from the SSE into the afternoon and evening. Winds will be near calm at 3 – 7 kts during the AM hours, then increase S of Morgan’s Point to 5 – 11 kts after 4 PM.

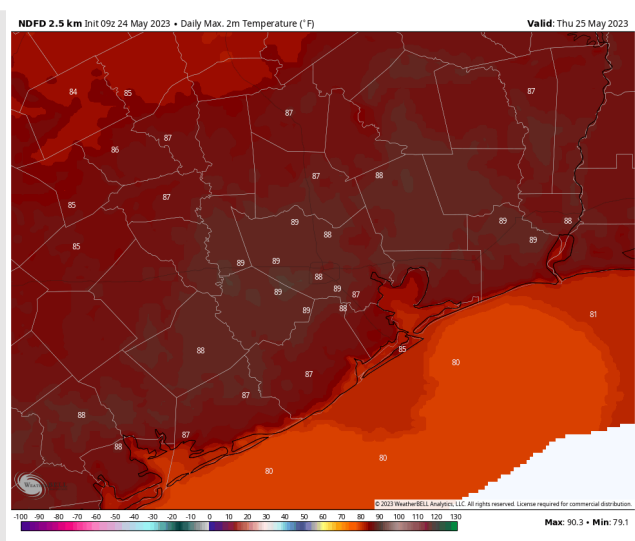
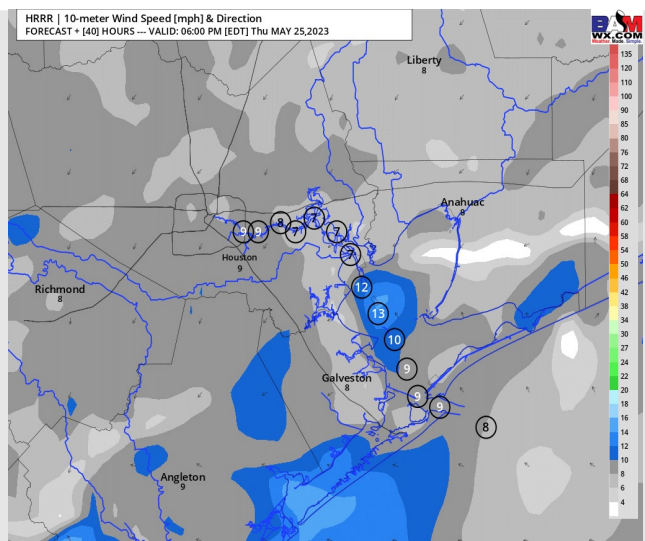
Temps: High temperatures Thursday will be in the upper 80s F N of Morgan’s Point and in the mid to lower 80s F S of Morgan’s Point.

Visibility: Not anticipating any visibility concerns at this time.

Precip Image: 7 PM CT



Wind Speed:
5 PM CT



High Temps
Thursday

Houston Pilots: Fri. 5/26/2023



Forecast Discussion

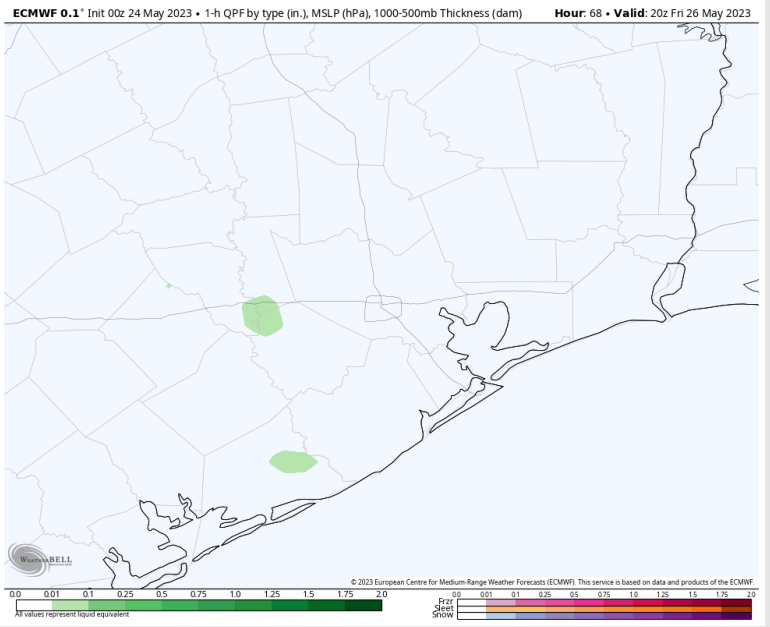
Precip: Favoring dry conditions for Friday with a 10% chance for an isolated popup shower from 3 – 6 PM.

Wind: S – SW winds during the early AM will veer from the N - NW during the late AM, then become variable in direction by the early afternoon. Winds north of Morgan’s Point will be near calm for the entirety of the day at 2 – 5 kts, while south of Morgan’s Point will remain at 3 – 7 kts.

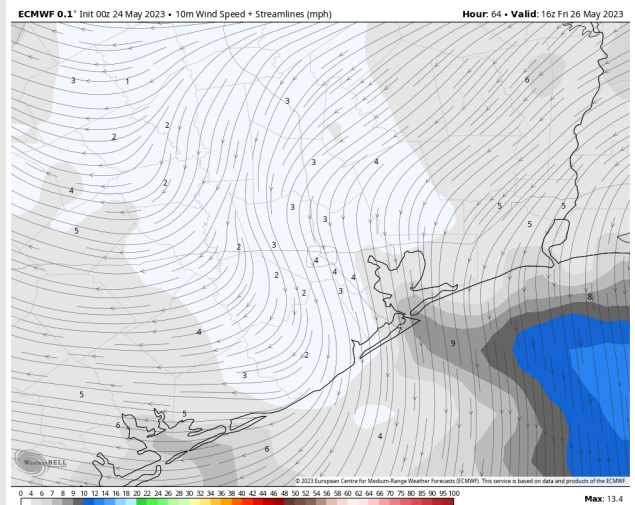
Temps: High temperatures Friday will be in the upper 80s to near 90 F north of Morgan’s Point and in the mid to lower 80s F south of Morgan’s Point.

Visibility: Not anticipating any visibility concerns at this time.

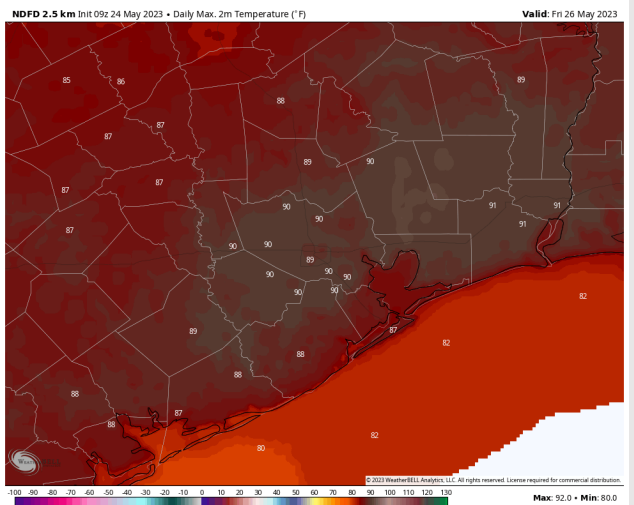
Precip Image: 3 PM CT



Wind Speed:
11 AM CT



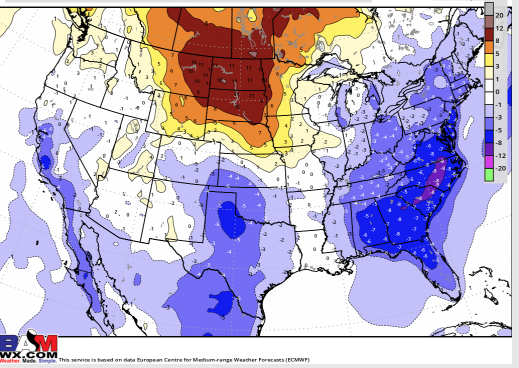
High Temps
Friday



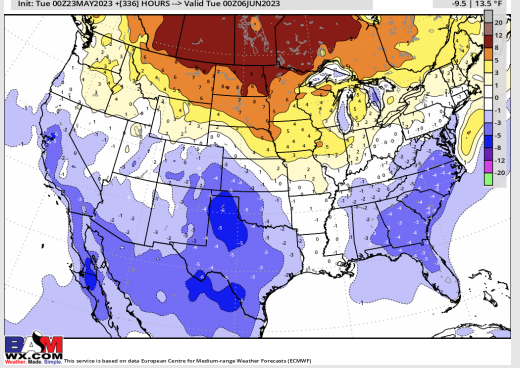
Houston Pilots: 5/24/23



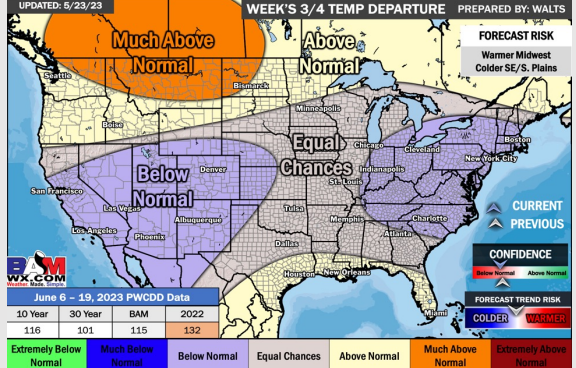
Next 7 Day Temperature Departure



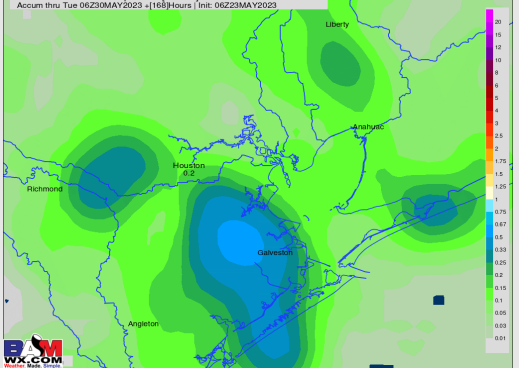
8-14 Day Temperature Departure



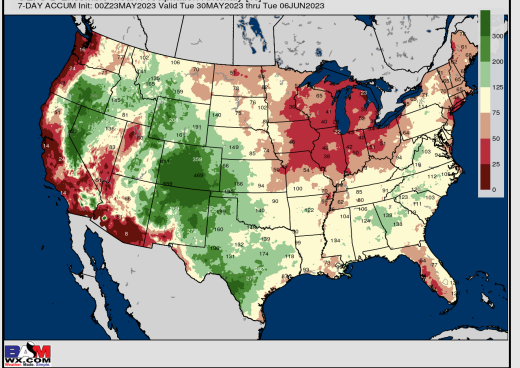
15-30 Day Temperature Departure



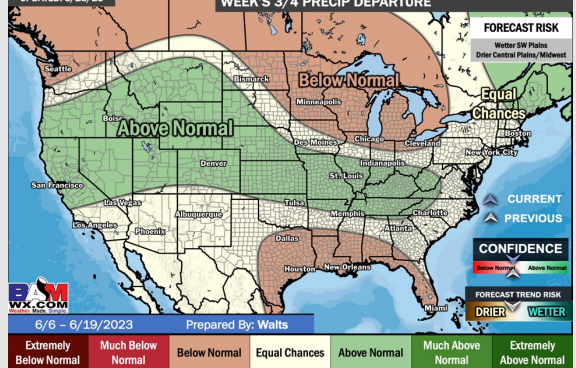
Next 7 Day Total Precipitation



8-14 Day % of Average Precip.



15-30 Day % of Average Precip.



- A few hit and miss rain chances over the next couple days with the better shot working in through the second half of the week. Favoring cooler than normal temperatures over the next week.
- Expecting seasonable to slightly below normal precipitation chances and slightly below normal temperatures for the week 2 timeframe.
- Above normal temperatures and below normal chances for precipitation are favored in the week 3/4 timeframe.