

Houston Pilots Forecast Package



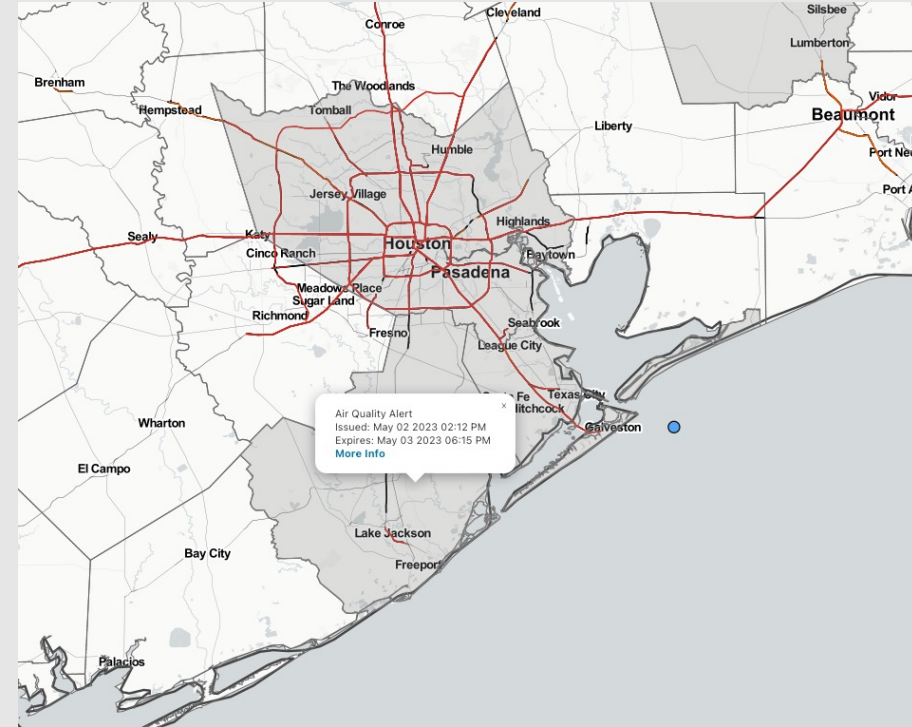
Updated: 5:00 AM CT

Wednesday, May 3, 2023

Forecaster: Vince Bryan

Weather Headlines

- Favoring a dry day today, with slight rain chances starting Thu PM and continuing into the weekend. Best overall chances will come Friday evening, and Sunday morning.
- Winds remain rather calm over the next few days with the best risk for elevated winds coming Monday/Tuesday.
- Threats for sea fog formation look very low with no strong signals over the next several days.
- Radiation fog however will be possible today and THU morning with the best risk of seeing reduced visibility coming along and north of Morgan's Point. More details on the daily slides below.



Radar/NWS Alerts: 5:00 AM CT

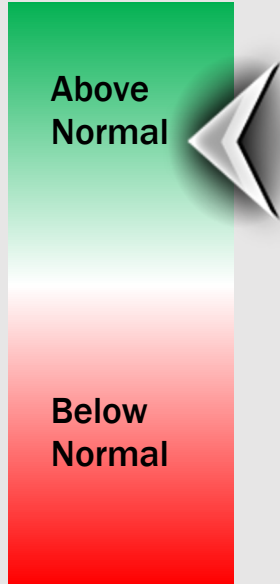
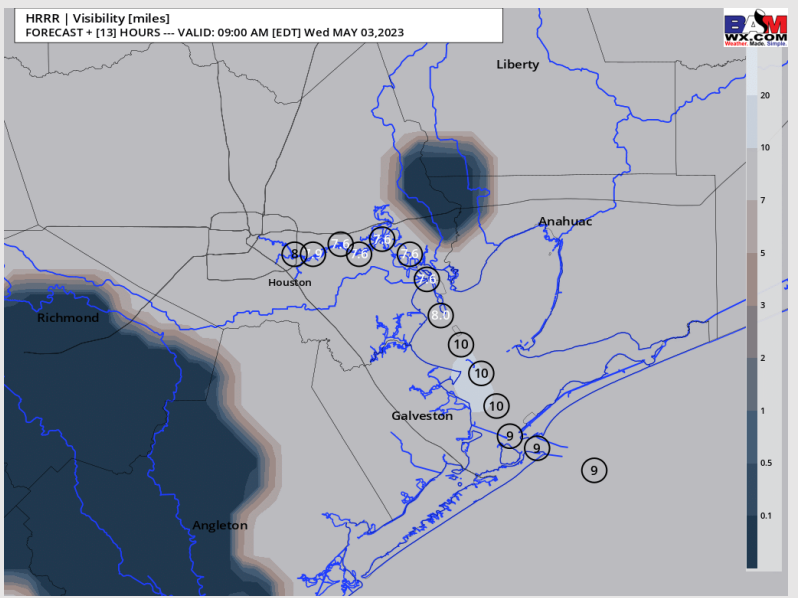
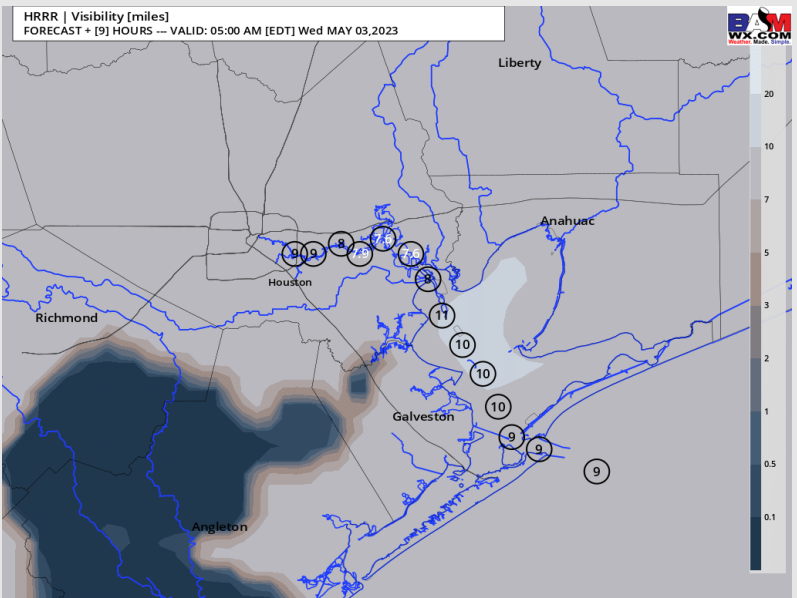


As always, please do not hesitate to reach out to us with any forecast questions via the chat option on the Weather Porthole or our on-call number, **(317)-560-8122** press 1 for forecast questions.

Houston Pilots Visibility Report



6 AM CT WED VISIBILITY 8 AM CT WED VISIBILITY Confidence



| TIMEFRAME DISCUSSED | THREAT |
|---------------------|--------|
| CURRENT - 9 AM WED | Low |

- Some of the latest data has backed off the fog threat some for stations along and north of Morgan's Point this AM.
- Given some high clouds working into the area now we will back off the radiation fog threat a bit, but will continue to keep an isolated risk in the forecast through 9 AM for the usual stations (Morgan's Point and north).
- No risk for sea fog development, as this risk will clear by mid morning.

Houston Pilots Extended Range Visibility Report



Saturday 5/6/23

Reduced visibility does not look to be a concern for Saturday



Monday 5/8/23

Reduced visibility not a concern at this time for Monday



Sunday 5/7/23

While not favored, worth keeping eyes towards Sunday AM for areas of reduced visibility as parameters are borderline for sea fog ahead of a potential front.



Chance for Reduced Visibility

| | |
|-------------|----------|
| Saturday AM | Unlikely |
| Saturday PM | Unlikely |
| Sunday AM | Possible |
| Sunday PM | Unlikely |
| Monday AM | Unlikely |
| Monday PM | Unlikely |

Houston Pilots Visibility Chart (miles)



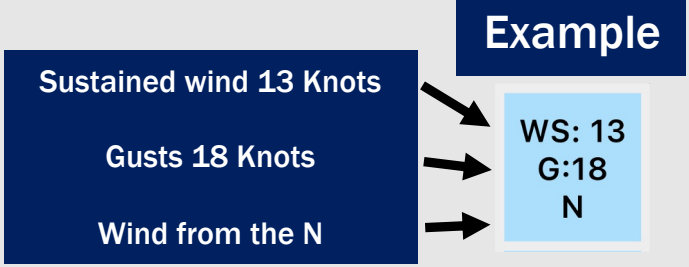
Forecast Confidence



| Time | Wed 3am | Wed 4am | Wed 5am | Wed 6am | Wed 7am | Wed 8am | Wed 9am | Wed 10am | Wed 11am | Wed 12pm | Wed 1pm | Wed 2pm | Wed 3pm | Wed 4pm | Wed 5pm | Wed 6pm | Wed 7pm | Wed 8pm | Wed 9pm | Wed 10pm | Wed 11pm | Thu 12am | Thu 1am | Thu 2am | Thu 3am | Thu 4am | Thu 5am | Thu 6am | Thu 7am | Thu 8am | Thu 9am | Thu 10am | Thu 11am | Thu 12pm | Thu 1pm | Thu 2pm | | |
|-------------------|---------|---------|---------|---------|---------|---------|---------|----------|----------|----------|---------|---------|---------|---------|---------|---------|---------|---------|---------|----------|----------|----------|---------|---------|---------|---------|---------|---------|---------|---------|---------|----------|----------|----------|---------|---------|----|----|
| 610 Bridge | 10 | 10 | 7 | 6 | 6 | 7 | 10 | 10 | 10 | 10 | 10 | 10 | 10 | 10 | 10 | 10 | 10 | 10 | 10 | 10 | 10 | 10 | 10 | 10 | 10 | 10 | 10 | 10 | 10 | 10 | 10 | 10 | 10 | 10 | 10 | 10 | 10 | 10 |
| Kinder 1 | 10 | 10 | 7 | 6 | 6 | 7 | 10 | 10 | 10 | 10 | 10 | 10 | 10 | 10 | 10 | 10 | 10 | 10 | 10 | 10 | 10 | 10 | 10 | 10 | 10 | 10 | 10 | 10 | 10 | 10 | 10 | 10 | 10 | 10 | 10 | 10 | 10 | 10 |
| Greens Bayou | 10 | 10 | 6 | 6 | 6 | 7 | 10 | 10 | 10 | 10 | 10 | 10 | 10 | 10 | 10 | 10 | 10 | 10 | 10 | 10 | 10 | 10 | 10 | 10 | 10 | 10 | 10 | 10 | 10 | 10 | 10 | 10 | 10 | 10 | 10 | 10 | 10 | 10 |
| Shell Crude | 10 | 10 | 7 | 9 | 5 | 7 | 10 | 10 | 10 | 10 | 10 | 10 | 10 | 10 | 10 | 10 | 10 | 10 | 10 | 10 | 10 | 10 | 10 | 10 | 10 | 10 | 10 | 10 | 10 | 10 | 10 | 10 | 10 | 10 | 10 | 10 | 10 | 10 |
| Lynchburg Ferries | 10 | 10 | 7 | 9 | 5 | 7 | 10 | 10 | 10 | 10 | 10 | 10 | 10 | 10 | 10 | 10 | 10 | 10 | 10 | 10 | 10 | 10 | 10 | 10 | 10 | 10 | 10 | 10 | 10 | 10 | 10 | 10 | 10 | 10 | 10 | 10 | 10 | 10 |
| Exxon 3 | 10 | 10 | 9 | 10 | 6 | 7 | 10 | 10 | 10 | 10 | 10 | 10 | 10 | 10 | 10 | 10 | 10 | 10 | 10 | 10 | 10 | 10 | 10 | 10 | 10 | 10 | 10 | 10 | 10 | 10 | 10 | 10 | 10 | 10 | 10 | 10 | 10 | 10 |
| Morgans Point | 10 | 10 | 10 | 10 | 6 | 7 | 10 | 10 | 10 | 10 | 10 | 10 | 10 | 10 | 10 | 10 | 10 | 10 | 10 | 10 | 10 | 10 | 10 | 10 | 10 | 10 | 10 | 10 | 10 | 10 | 10 | 10 | 10 | 10 | 10 | 10 | 10 | 10 |
| 75/76 | 10 | 10 | 10 | 10 | 7 | 7 | 10 | 10 | 10 | 10 | 10 | 10 | 10 | 10 | 10 | 10 | 10 | 10 | 10 | 10 | 10 | 10 | 10 | 10 | 10 | 10 | 10 | 10 | 10 | 10 | 10 | 10 | 10 | 10 | 10 | 10 | 10 | 10 |
| 63/64 | 10 | 10 | 10 | 10 | 9 | 7 | 10 | 10 | 10 | 10 | 10 | 10 | 10 | 10 | 10 | 10 | 10 | 10 | 10 | 10 | 10 | 10 | 10 | 10 | 10 | 10 | 10 | 10 | 10 | 10 | 10 | 10 | 10 | 10 | 10 | 10 | 10 | 10 |
| 51/52 | 10 | 10 | 10 | 10 | 9 | 9 | 10 | 10 | 10 | 10 | 10 | 10 | 10 | 10 | 10 | 10 | 10 | 10 | 10 | 10 | 10 | 10 | 10 | 10 | 10 | 10 | 10 | 10 | 10 | 10 | 10 | 10 | 10 | 10 | 10 | 10 | 10 | 10 |
| 37/38 | 10 | 10 | 10 | 10 | 9 | 9 | 10 | 10 | 10 | 10 | 10 | 10 | 10 | 10 | 10 | 10 | 10 | 10 | 10 | 10 | 10 | 10 | 10 | 10 | 10 | 10 | 10 | 10 | 10 | 10 | 10 | 10 | 10 | 10 | 10 | 10 | 10 | 10 |
| 25/26 | 10 | 10 | 10 | 10 | 10 | 9 | 10 | 10 | 10 | 10 | 10 | 10 | 10 | 10 | 10 | 10 | 10 | 10 | 10 | 10 | 10 | 10 | 10 | 10 | 10 | 10 | 10 | 10 | 10 | 10 | 10 | 10 | 10 | 10 | 10 | 10 | 10 | 10 |
| 11/12 | 10 | 10 | 10 | 10 | 10 | 9 | 10 | 10 | 10 | 10 | 10 | 10 | 10 | 10 | 10 | 10 | 10 | 10 | 10 | 10 | 10 | 10 | 10 | 10 | 10 | 10 | 10 | 10 | 10 | 10 | 10 | 10 | 10 | 10 | 10 | 10 | 10 | 10 |
| 1 & 2 Bravo | 10 | 10 | 10 | 10 | 10 | 9 | 10 | 10 | 10 | 10 | 10 | 10 | 10 | 10 | 10 | 10 | 10 | 10 | 10 | 10 | 10 | 10 | 10 | 10 | 9 | 9 | 9 | 9 | 9 | 9 | 9 | 9 | 9 | 9 | 10 | 10 | 10 | 10 |

NOTE: This is automated data that may/may not agree with the official BAM thinking that's found on the daily slides or special visibility report slides. This data should be used as a guide only

Houston Pilots Wind Chart



| Time Knots | Wed 3am | Wed 4am | Wed 5am | Wed 6am | Wed 7am | Wed 8am | Wed 9am | Wed 10am | Wed 11am | Wed 12pm | Wed 1pm | Wed 2pm | Wed 3pm | Wed 4pm | Wed 5pm | Wed 6pm | Wed 7pm | Wed 8pm | Wed 9pm | Wed 10pm | Wed 11pm | Thu 12am | Thu 1am | Thu 2am | Thu 3am | Thu 4am | Thu 5am | Thu 6am | Thu 7am | Thu 8am | Thu 9am | Thu 10am | Thu 11am | Thu 12pm | Thu 1pm | Thu 2pm |
|-------------------|---------|---------|---------|---------|---------|---------|---------|----------|----------|----------|---------|---------|---------|---------|---------|---------|---------|---------|---------|----------|----------|----------|---------|---------|---------|---------|---------|---------|---------|---------|---------|----------|----------|----------|---------|---------|
| 610 Bridge | 2 | 3 | 3 | 3 | 3 | 1 | 3 | 5 | 6 | 7 | 8 | 7 | 7 | 7 | 8 | 10 | 10 | 8 | 7 | 6 | 5 | 4 | 4 | 3 | 2 | 3 | 3 | 3 | 3 | 4 | 5 | 6 | 7 | 8 | 9 | 10 |
| | 2 | 4 | 5 | 5 | 4 | 4 | 7 | 10 | 10 | 10 | 10 | 9 | 8 | 9 | 10 | 12 | 12 | 11 | 10 | 9 | 7 | 6 | 6 | 4 | 4 | 3 | 4 | 4 | 6 | 7 | 8 | 9 | 10 | 11 | 11 | |
| | W | SW | ENE | E | WSW | ENE | ENE | ENE | ENE | E | E | E | ESE | SE | SE | SE | SE | SE | SSE | SSE | SSE | S | SSE | S | SSE | SSE | ESE | E | ENE | E | ESE | ESE | SE | SE | SE | SE |
| Kinder 1 | 2 | 3 | 2 | 3 | 3 | 1 | 3 | 5 | 6 | 7 | 7 | 7 | 7 | 7 | 8 | 10 | 10 | 7 | 6 | 5 | 5 | 4 | 4 | 3 | 2 | 3 | 3 | 3 | 4 | 5 | 6 | 7 | 9 | 9 | 10 | |
| | 3 | 5 | 5 | 6 | 5 | 5 | 7 | 10 | 10 | 10 | 10 | 9 | 8 | 9 | 10 | 12 | 12 | 11 | 9 | 8 | 7 | 6 | 6 | 4 | 4 | 4 | 4 | 4 | 5 | 6 | 7 | 9 | 10 | 11 | 11 | |
| Greens Bayou | 1 | 3 | 2 | 3 | 3 | 1 | 3 | 4 | 6 | 7 | 7 | 7 | 6 | 7 | 8 | 10 | 10 | 7 | 6 | 5 | 5 | 4 | 4 | 3 | 3 | 3 | 3 | 3 | 4 | 4 | 6 | 8 | 9 | 9 | 10 | |
| | 3 | 6 | 5 | 6 | 5 | 5 | 7 | 10 | 10 | 10 | 9 | 9 | 8 | 9 | 10 | 12 | 12 | 11 | 9 | 8 | 7 | 6 | 6 | 4 | 4 | 4 | 4 | 3 | 4 | 5 | 6 | 7 | 8 | 9 | 10 | 11 |
| Shell Crude | 1 | 3 | 2 | 3 | 3 | 2 | 1 | 3 | 5 | 6 | 7 | 7 | 7 | 7 | 8 | 10 | 10 | 7 | 6 | 5 | 5 | 4 | 4 | 3 | 3 | 3 | 3 | 3 | 4 | 4 | 5 | 6 | 8 | 9 | 10 | 10 |
| | 3 | 6 | 6 | 6 | 6 | 5 | 7 | 10 | 10 | 10 | 9 | 9 | 8 | 10 | 11 | 12 | 12 | 11 | 9 | 8 | 7 | 6 | 6 | 4 | 4 | 4 | 4 | 4 | 4 | 5 | 6 | 7 | 8 | 9 | 10 | 12 |
| Lynchburg Ferries | 1 | 3 | 2 | 3 | 2 | 1 | 3 | 4 | 5 | 6 | 6 | 6 | 7 | 9 | 9 | 11 | 10 | 8 | 7 | 6 | 5 | 4 | 4 | 3 | 3 | 3 | 3 | 4 | 4 | 4 | 5 | 6 | 8 | 9 | 10 | 11 |
| | 3 | 7 | 5 | 6 | 6 | 5 | 7 | 10 | 10 | 9 | 8 | 8 | 8 | 11 | 12 | 12 | 13 | 11 | 9 | 8 | 7 | 6 | 6 | 5 | 4 | 4 | 4 | 5 | 6 | 6 | 7 | 8 | 9 | 10 | 11 | 12 |
| Exxon 3 | 1 | 3 | 3 | 3 | 3 | 1 | 3 | 4 | 5 | 6 | 6 | 6 | 8 | 9 | 9 | 11 | 10 | 9 | 7 | 6 | 6 | 5 | 4 | 4 | 3 | 3 | 4 | 4 | 5 | 5 | 7 | 8 | 9 | 10 | 11 | |
| | 4 | 8 | 7 | 6 | 7 | 5 | 8 | 9 | 9 | 9 | 8 | 10 | 12 | 13 | 13 | 13 | 12 | 10 | 8 | 7 | 6 | 5 | 4 | 4 | 3 | 3 | 4 | 4 | 5 | 5 | 7 | 9 | 10 | 10 | 12 | 12 |
| Morgans Point | 3 | 5 | 4 | 4 | 4 | 3 | 4 | 5 | 5 | 6 | 5 | 6 | 9 | 11 | 10 | 12 | 12 | 10 | 9 | 8 | 7 | 6 | 5 | 4 | 4 | 4 | 4 | 5 | 6 | 6 | 8 | 9 | 10 | 11 | 12 | |
| | 5 | 9 | 8 | 6 | 7 | 6 | 8 | 9 | 10 | 10 | 9 | 9 | 11 | 13 | 13 | 14 | 14 | 12 | 11 | 9 | 9 | 8 | 7 | 6 | 5 | 5 | 5 | 6 | 7 | 7 | 8 | 9 | 10 | 11 | 13 | 13 |
| 75/76 | 4 | 7 | 6 | 5 | 6 | 6 | 6 | 7 | 6 | 5 | 4 | 7 | 10 | 12 | 12 | 14 | 14 | 13 | 11 | 10 | 9 | 8 | 7 | 6 | 6 | 5 | 6 | 6 | 8 | 8 | 8 | 9 | 10 | 11 | 12 | 13 |
| | 4 | 8 | 8 | 6 | 7 | 6 | 8 | 10 | 10 | 8 | 8 | 11 | 14 | 14 | 16 | 16 | 14 | 13 | 11 | 10 | 9 | 8 | 7 | 6 | 6 | 6 | 7 | 8 | 9 | 9 | 10 | 11 | 12 | 14 | 15 | |
| 63/64 | 3 | 6 | 6 | 7 | 7 | 6 | 8 | 7 | 5 | 5 | 5 | 8 | 11 | 12 | 12 | 14 | 14 | 13 | 11 | 10 | 9 | 8 | 8 | 7 | 6 | 5 | 6 | 6 | 8 | 8 | 9 | 9 | 11 | 11 | 12 | 13 |
| | 4 | 6 | 7 | 8 | 8 | 7 | 8 | 10 | 10 | 8 | 9 | 12 | 14 | 14 | 16 | 16 | 14 | 12 | 11 | 10 | 9 | 8 | 7 | 7 | 6 | 6 | 7 | 8 | 9 | 10 | 12 | 13 | 14 | 15 | 15 | |
| 51/52 | 1 | 3 | 3 | 3 | 3 | 2 | 3 | 4 | 5 | 6 | 6 | 6 | 8 | 9 | 12 | 12 | 12 | 13 | 13 | 12 | 11 | 9 | 9 | 8 | 7 | 7 | 6 | 5 | 6 | 7 | 8 | 9 | 10 | 11 | 12 | 13 |
| | 3 | 3 | 7 | 9 | 8 | 6 | 7 | 6 | 5 | 6 | 8 | 9 | 12 | 12 | 12 | 13 | 13 | 12 | 11 | 9 | 9 | 8 | 7 | 7 | 6 | 5 | 5 | 6 | 7 | 8 | 9 | 10 | 11 | 12 | 13 | 15 |
| 37/38 | 2 | 2 | 6 | 8 | 8 | 6 | 6 | 6 | 6 | 7 | 9 | 10 | 11 | 12 | 12 | 12 | 12 | 10 | 9 | 9 | 9 | 8 | 7 | 7 | 6 | 5 | 5 | 5 | 7 | 8 | 9 | 9 | 10 | 11 | 13 | 14 |
| | 4 | 2 | 6 | 8 | 8 | 9 | 7 | 8 | 9 | 10 | 10 | 11 | 13 | 14 | 13 | 13 | 13 | 11 | 11 | 10 | 10 | 9 | 8 | 7 | 6 | 5 | 6 | 7 | 8 | 9 | 10 | 11 | 12 | 13 | 14 | |
| 25/26 | 2 | 1 | 5 | 7 | 9 | 6 | 6 | 6 | 6 | 8 | 9 | 9 | 11 | 11 | 11 | 10 | 10 | 9 | 8 | 8 | 8 | 7 | 7 | 7 | 6 | 5 | 5 | 6 | 7 | 8 | 9 | 10 | 10 | 10 | 12 | 13 |
| | 5 | 2 | 5 | 8 | 10 | 7 | 8 | 9 | 10 | 10 | 11 | 11 | 12 | 13 | 13 | 12 | 11 | 10 | 10 | 9 | 9 | 8 | 8 | 7 | 6 | 5 | 6 | 6 | 7 | 8 | 9 | 10 | 11 | 11 | 12 | 13 |
| 11/12 | 2 | 0 | 5 | 7 | 8 | 6 | 6 | 6 | 7 | 8 | 9 | 9 | 10 | 11 | 11 | 10 | 9 | 9 | 9 | 8 | 8 | 8 | 7 | 7 | 6 | 5 | 5 | 6 | 6 | 8 | 8 | 9 | 10 | 10 | 10 | 11 |
| | 5 | 2 | 5 | 8 | 10 | 7 | 8 | 9 | 10 | 10 | 11 | 11 | 12 | 13 | 13 | 11 | 11 | 10 | 10 | 9 | 9 | 8 | 8 | 7 | 6 | 6 | 6 | 7 | 8 | 9 | 10 | 11 | 11 | 12 | 13 | 13 |
| 1 & 2 Bravo | 2 | 1 | 4 | 7 | 10 | 8 | 7 | 7 | 7 | 8 | 10 | 9 | 10 | 11 | 11 | 10 | 10 | 10 | 10 | 10 | 10 | 9 | 8 | 8 | 7 | 6 | 6 | 7 | 8 | 9 | 10 | 10 | 10 | 10 | 10 | 11 |
| | 4 | 3 | 4 | 7 | 10 | 8 | 8 | 10 | 10 | 10 | 11 | 12 | 12 | 13 | 13 | 11 | 11 | 11 | 11 | 11 | 10 | 10 | 9 | 8 | 8 | 7 | 6 | 8 | 9 | 10 | 10 | 11 | 11 | 11 | 11 | 12 |

NOTE: This is automated data that may/may not agree with the official BAM thinking that's found on the daily slides or special visibility report slides. This data should be used as a guide only

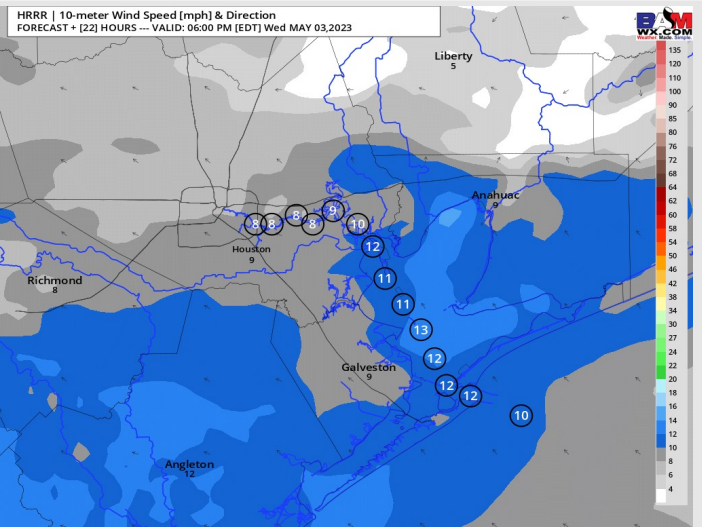
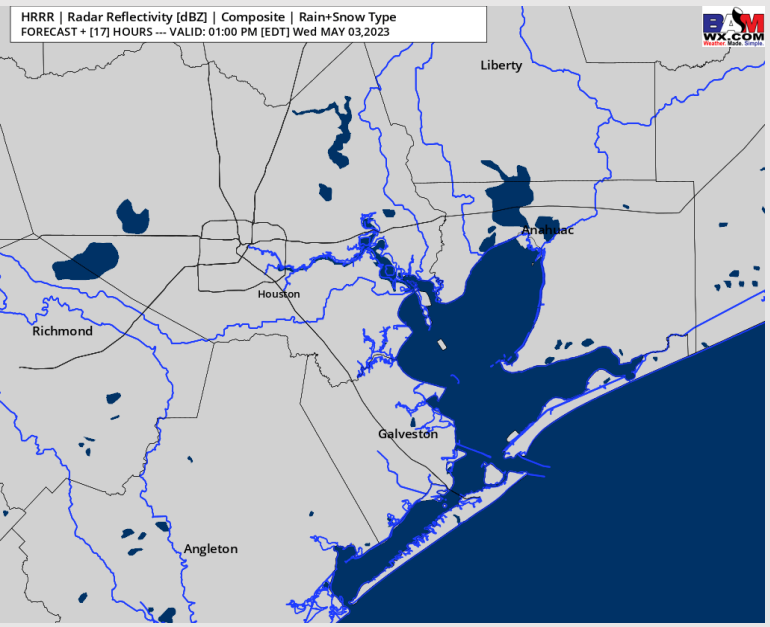
Houston Pilots: Wed. 5/3/2023



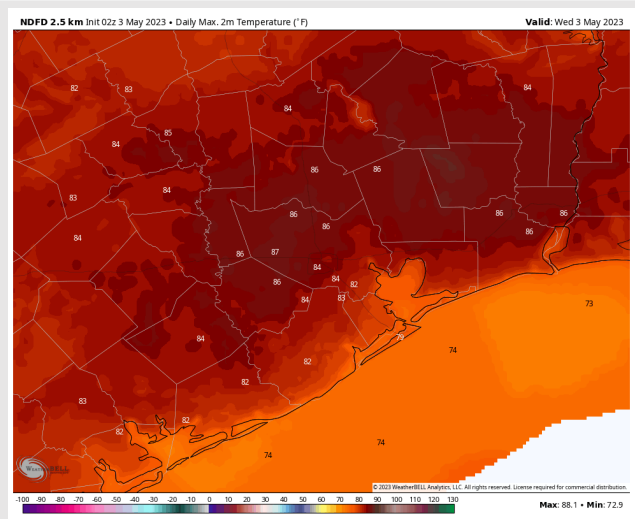
Forecast Discussion

- Precip:** Favoring dry conditions to continue for today.
- Wind:** Winds will begin out of the SE at 3 – 8 kts for all stations early this morning. Winds will then shift to the E/NE by 7 AM, then will then gradually shift to be out of the SE by ~2 PM. Winds at this time pick up to 8 – 13 kts for all stations around 4 PM. After sunset, winds N of Morgan’s Point will decrease again to 3 – 8 kts. Gusts of 13-15 kts possible through the PM at the boarding station.
- Temps:** High temperatures will be in the mid 80s F north of Morgan’s Point and in the upper to mid 70s F south of Morgan’s Point.
- Visibility:** Check slide above for latest thinking on fog threat this AM.

Precip Image: 12 PM CT



Wind Speed:
5 PM CT



High Temps
Today

Forecast Discussion

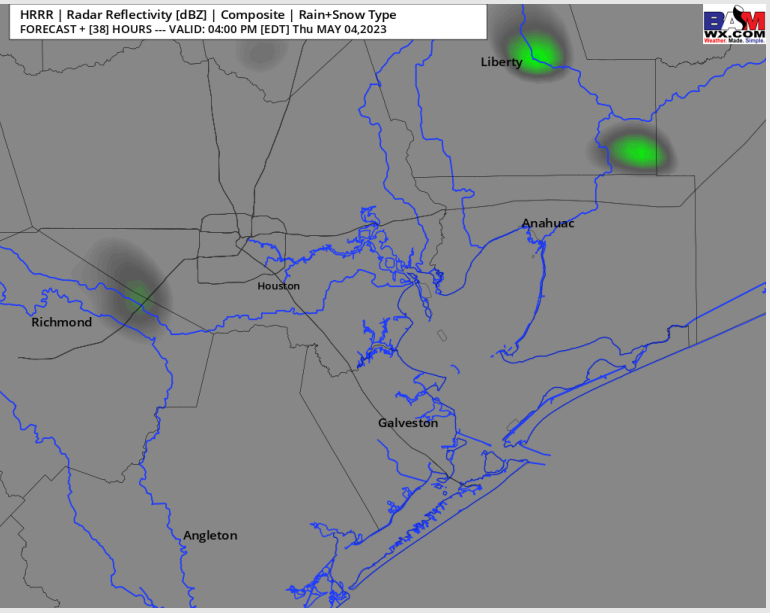
Precip: Favoring dry conditions for the majority of Thursday AM. Towards about 1 PM and through the PM, very isolated shower chances will be present at 10-20% with the bulk of any activity primarily staying north of the stations. Most locations likely stay dry.

Wind: Near calm S/SE winds (3 – 8 kts) will be slowly increasing during the AM hours to 8 – 13 kts by 12 PM. After 7 PM winds increase again south of Morgan’s Point to 10-15 kts. (Winds north of Morgan’s point remain at 8 – 13 kts). A few gusts of up to 15-20 kts will be possible at the boarding station in the afternoon.

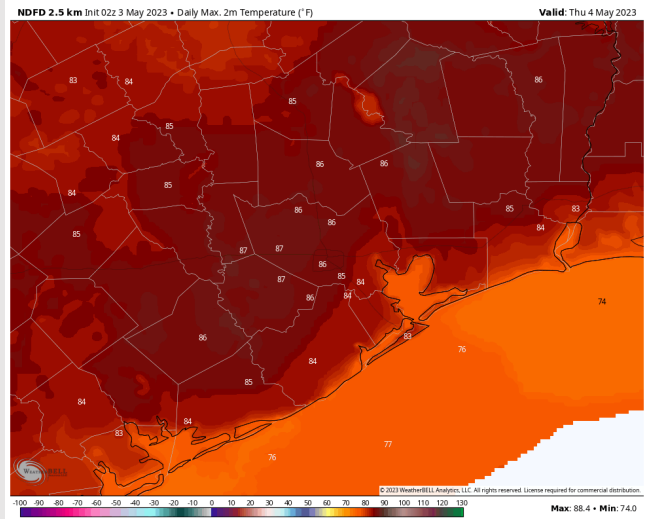
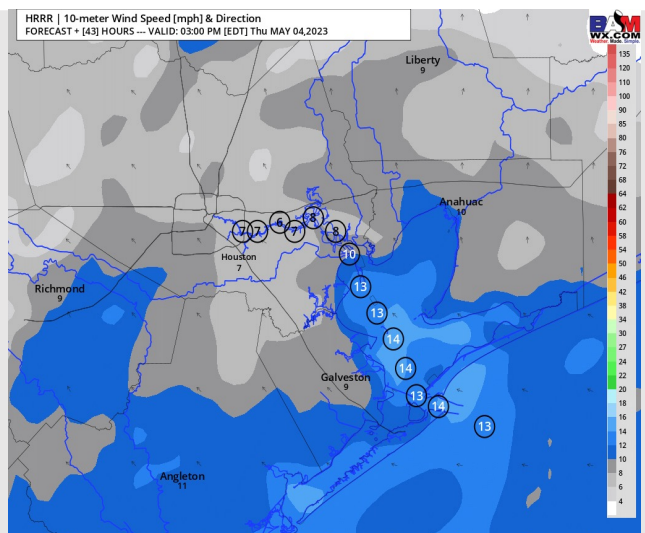
Temps: High temperatures Thursday will be in the mid 80s F north of Morgan’s point and in the mid to upper 70s F south of Morgan’s Point.

Visibility: Areas of radiational fog will be possible along and north of Morgan’s Point during the AM from 4 – 9 AM. This looks to be a very similar threat to what has occurred the past few mornings.

Precip Image: 3 PM CT



Wind Speed:
2 PM CT



High Temps
Thursday

Houston Pilots: Fri. 5/5/2023



Forecast Discussion

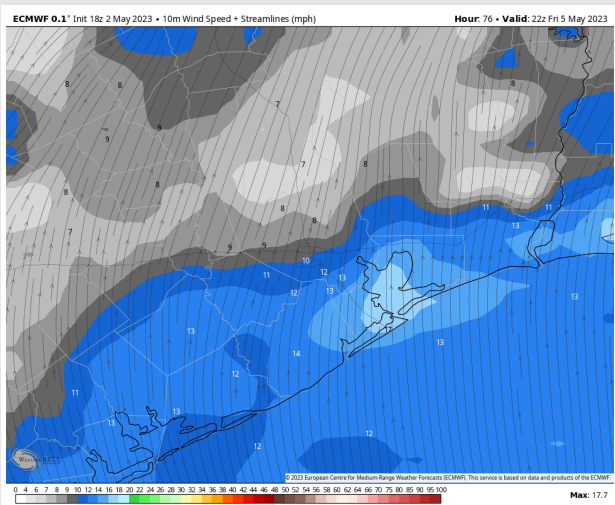
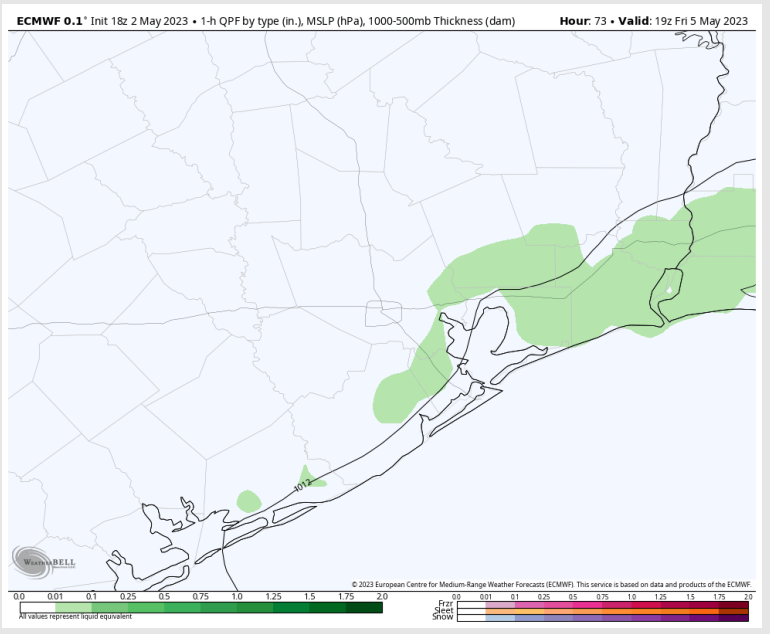
Precip: Favoring dry conditions through the AM hours on Friday. Beginning at 12 PM, 10-20% chance of showers until 9 PM, when chances increase to 30% at 9 PM when showers become more scattered.

Wind: Winds out of the S throughout the entire day on Friday. Winds north of Morgan's Point will be at 8-13 kts throughout the entire day. Winds south of Morgan's Point will start off at 10-15 kts, before slightly increasing to 12-17 kts by 2 PM. Wind gusts of 20-23 kts possible.

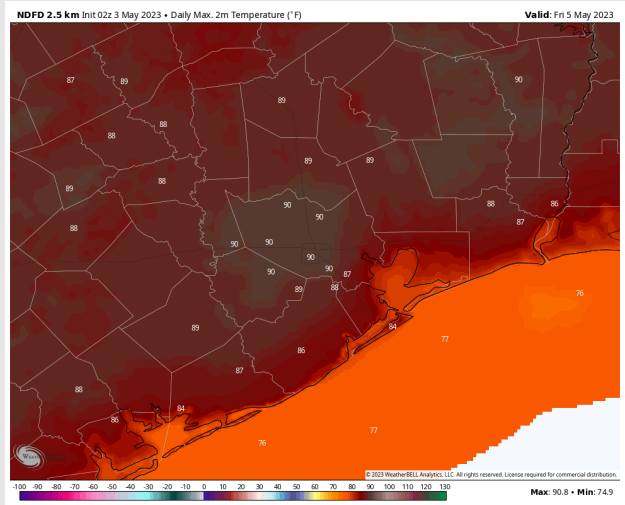
Temps: High temps on Friday to be in the high 80s F/low 90s F north of Morgan's Point and in the mid/upper 70's F south of Morgan's Point.

Visibility: No visibility issues anticipated at this time.

Precip Image: 2 PM CT



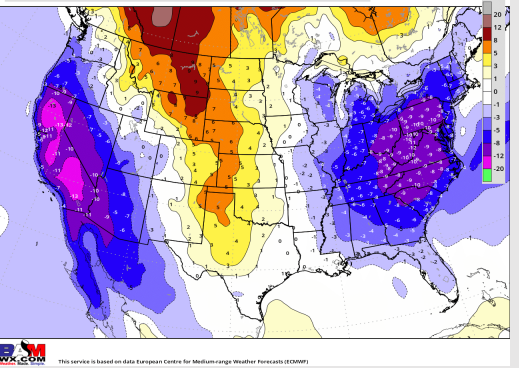
Wind Speed:
5 PM CT



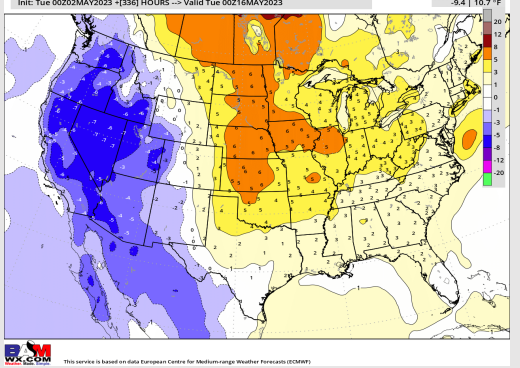
High Temps
Friday

Houston Pilots: 5/3/23

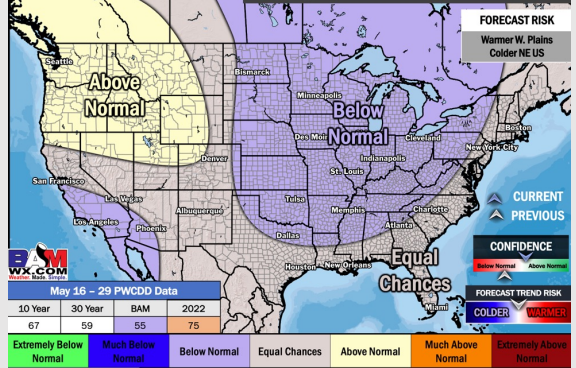
Next 7 Day Temperature Departure



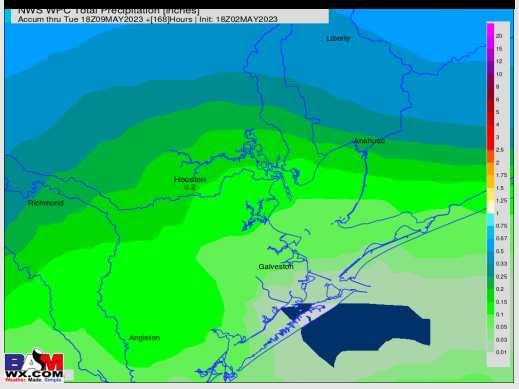
8-14 Day Temperature Departure



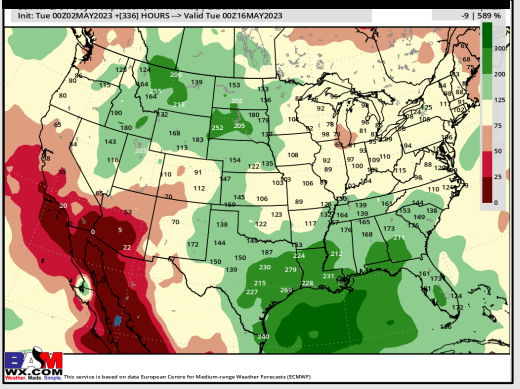
15-30 Day Temperature Departure



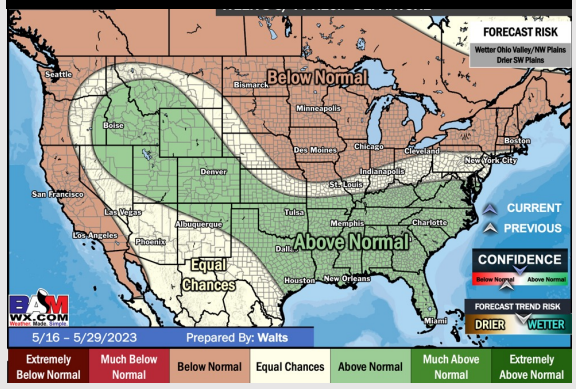
Next 7 Day Total Precipitation



8-14 Day % of Average Precip.



15-30 Day % of Average Precip.



- Anticipating quieter weather with rain chances picking up Friday AM and then through the weekend. Temperatures will remain near average for this time of year.
- Expecting above normal precipitation chances and slightly above normal temperatures for the week 2 timeframe.
- Near normal temperatures and above normal chances for precipitation are favored in the week 3/4 timeframe.