

# Houston Pilots Forecast Package

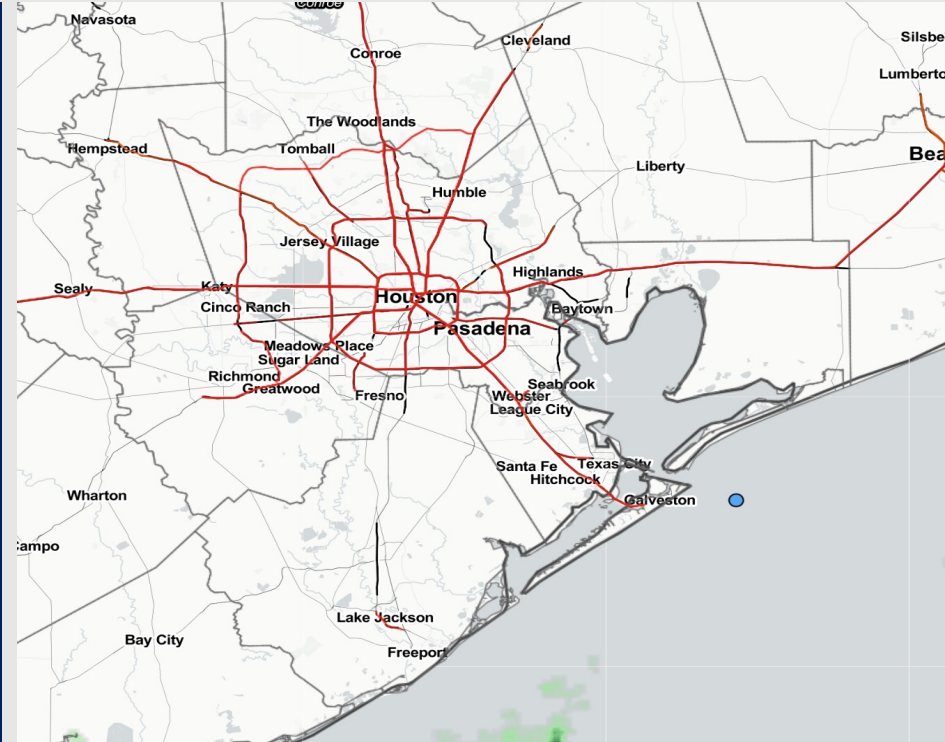


Updated: 1:00 PM CT  
Monday, May 22, 2023

Forecaster: Tyler Riggles

## Weather Headlines

- Scattered rain chances possible this afternoon with sporadic rain chances being the case over the next couple of days.
- Winds overall will stay below 15 kts throughout today through Wednesday for all stations.
- Not anticipating any issues with sea fog development over the next few days.



**Radar/NWS Alerts: 1:00 PM CT**



As always, please do not hesitate to reach out to us with any forecast questions via the chat option on the Weather Porthole or our on-call number, **(317)-560-8122** press 1 for forecast questions.

# Houston Pilots Extended Range Visibility Report



## Thursday 5/25/23

Patchy radiation fog possible for stations N of 11/12 Thursday morning creating a very low-end risk for slightly reduced visibility.



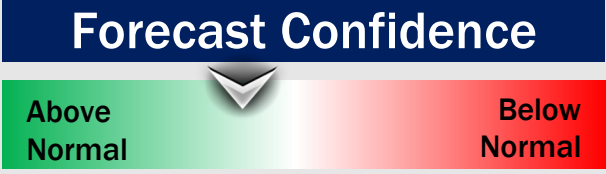
## Saturday 5/27/23

Not anticipating any visibility concerns Saturday.



## Friday 5/26/23

Radiation Fog possible Friday morning mostly NW of stations, however stations N of Morgan's Point at a low-end risk for reduced visibility.



## Chance for Reduced Visibility

Thursday AM	Possible
Thursday PM	Unlikely
Friday AM	Possible
Friday PM	Unlikely
Saturday AM	Unlikely
Saturday PM	Unlikely

# Houston Pilots Visibility Chart (miles)



## Forecast Confidence



Time	Mon 12pm	Mon 1pm	Mon 2pm	Mon 3pm	Mon 4pm	Mon 5pm	Mon 6pm	Mon 7pm	Mon 8pm	Mon 9pm	Mon 10pm	Mon 11pm	Tue 12am	Tue 1am	Tue 2am	Tue 3am	Tue 4am	Tue 5am	Tue 6am	Tue 7am	Tue 8am	Tue 9am	Tue 10am	Tue 11am	Tue 12pm	Tue 1pm	Tue 2pm	Tue 3pm	Tue 4pm	Tue 5pm	Tue 6pm	Tue 7pm	Tue 8pm
610 Bridge	10	10	10	10	10	10	10	10	10	10	10	10	10	10	10	10	10	10	10	10	10	10	10	10	10	10	10	10	10	10	10	10	10
Kinder 1	10	10	10	10	10	10	10	10	10	10	10	10	10	10	10	10	10	10	10	10	10	10	10	10	10	10	10	10	10	10	10	10	10
Greens Bayou	10	10	10	10	10	10	10	10	10	10	10	10	10	10	10	10	10	10	10	10	10	10	10	10	10	10	10	10	10	10	10	10	10
Shell Crude	10	10	10	10	10	10	10	10	10	10	10	10	10	10	10	10	10	10	10	10	10	10	10	10	10	10	10	10	10	10	10	10	10
Lynchburg Ferries	10	10	10	10	10	10	10	10	10	10	10	10	10	10	10	10	10	10	10	10	10	10	10	10	10	10	10	10	10	10	10	10	10
Exxon 3	10	10	10	10	10	10	10	10	10	10	10	10	10	10	10	10	10	10	10	10	10	10	10	10	10	10	10	10	10	10	10	10	10
Morgans Point	10	10	10	10	10	10	10	10	10	10	10	10	10	10	10	10	10	10	10	10	10	10	10	10	10	10	10	10	10	10	10	10	10
75/76	10	10	10	10	10	10	10	10	10	10	10	10	10	10	10	10	10	10	10	10	10	10	10	10	10	10	10	10	10	10	10	10	10
63/64	10	10	10	10	10	10	10	10	10	10	10	10	10	10	10	10	10	10	10	10	10	10	10	10	10	10	10	10	10	10	10	10	10
51/52	10	10	10	10	10	10	10	10	10	10	10	10	10	10	10	10	10	10	10	10	10	10	10	10	10	10	10	10	10	10	10	10	10
37/38	10	10	10	10	10	10	10	10	10	10	10	10	10	10	10	10	10	10	10	10	10	10	10	10	10	10	10	10	10	10	10	10	10
25/26	10	10	10	10	10	10	10	10	10	10	10	10	10	10	10	10	10	10	10	10	10	10	10	10	10	10	10	10	10	10	10	10	10
11/12	10	10	10	10	10	10	10	10	10	10	10	10	10	10	10	10	10	10	10	10	10	10	10	10	10	10	10	10	10	10	10	10	10
1 & 2 Bravo	10	10	10	10	10	10	10	10	10	10	10	10	10	10	10	10	10	10	10	10	10	10	10	10	10	10	10	10	10	10	10	10	10

**NOTE: This is automated data that may/may not agree with the official BAM thinking that's found on the daily slides or special visibility report slides. This data should be used as a guide only**

# Houston Pilots Wind Chart



**Sustained wind 13 Knots**  
**Gusts 18 Knots**  
**Wind from the N**

**Example**

**WS: 13**  
**G:18**  
**N**

Time Knots	Mon 12pm	Mon 1pm	Mon 2pm	Mon 3pm	Mon 4pm	Mon 5pm	Mon 6pm	Mon 7pm	Mon 8pm	Mon 9pm	Mon 10pm	Mon 11pm	Tue 12am	Tue 1am	Tue 2am	Tue 3am	Tue 4am	Tue 5am	Tue 6am	Tue 7am	Tue 8am	Tue 9am	Tue 10am	Tue 11am	Tue 12pm	Tue 1pm	Tue 2pm	Tue 3pm	Tue 4pm	Tue 5pm	Tue 6pm	Tue 7pm	Tue 8pm	
610 Bridge	4	3	3	4	4	4	4	5	4	4	3	3	3	2	2	2	2	2	2	2	2	2	3	3	3	3	4	4	5	5	5	5	4	
	5	5	5	6	6	5	5	5	5	5	5	5	4	3	2	2	2	2	2	2	2	2	3	4	4	5	5	6	6	7	6	6	6	
	NE	NE	SW	WNW	ENE	ENE	E	ESE	SSE	S	SSW	SW	WSW	WSW	WNW	WNW	NW	N	NNE	NNW	WSW	NNW	NNW	NNW	NNW	NNW	SE	NE	NE	ENE	ENE	ESE		
Kinder 1	4	3	3	4	4	4	4	5	4	4	3	3	3	2	2	2	2	2	2	2	2	2	3	3	3	3	4	4	5	5	5	4		
	5	4	5	6	6	6	5	5	4	5	5	5	4	3	2	2	2	2	2	2	2	2	3	4	4	5	5	6	6	7	6	6	6	
	NE	NNE	SSE	SW	NE	ENE	E	ESE	SSE	S	SSW	SW	WSW	WSW	WNW	WNW	NW	N	N	NNW	W	NNW	NNW	NNW	NNW	NNW	SSE	ENE	NE	NE	ENE	ESE		
Greens Bayou	3	3	3	4	4	4	4	5	4	3	3	3	3	2	2	2	2	2	2	2	2	2	3	3	3	3	4	4	5	5	5	4		
	5	4	5	6	6	6	6	5	5	5	5	5	4	3	3	3	2	3	2	2	3	2	3	4	4	5	5	6	7	7	6	6	6	
	NE	NNE	SE	SW	NE	NE	ENE	E	ESE	SSE	S	SSW	WSW	W	W	WNW	WNW	NNW	N	NNE	N	NNW	NNW	N	N	NNW	SSE	NE	NNE	NE	NE	ENE	ESE	
Shell Crude	4	3	3	4	4	4	4	5	4	3	3	3	3	2	2	2	2	2	2	2	2	2	3	3	3	3	4	4	5	5	5	4		
	5	4	5	6	6	6	6	6	5	5	5	5	4	4	3	3	3	3	3	3	3	3	3	4	4	5	5	6	7	7	6	6	7	
	ENE	NE	NE	SE	NE	ENE	ESE	SE	SSE	S	SSW	SSW	WSW	W	W	WNW	WNW	NNW	N	E	NNW	N	NNW	N	N	NW	ENE	NNE	NNE	NE	ENE	ENE	ESE	
Lynchburg Ferries	3	3	3	4	4	4	5	5	4	4	3	4	3	2	3	2	3	2	3	3	3	3	3	3	3	4	4	5	5	5	6	6	5	
	5	4	5	6	6	6	6	6	5	5	5	5	5	4	4	3	4	3	3	3	4	3	4	4	4	5	5	6	7	7	7	7	7	
	ENE	ENE	SSE	SW	SSE	ENE	ESE	SE	SSE	S	SSW	SSW	WSW	W	W	WNW	NW	NNW	N	ENE	SSW	N	N	N	NNW	WSW	SSW	SE	NNE	NNE	NE	ENE	ESE	
Exxon 3	3	3	3	4	4	4	5	5	4	4	4	4	4	3	3	3	3	3	3	3	3	3	3	3	3	4	4	4	5	5	5	6	6	5
	5	5	5	6	6	6	6	6	6	6	6	5	6	5	4	4	4	4	4	4	5	4	4	4	4	5	5	6	7	7	7	7	7	
	ENE	ENE	SSE	S	S	ESE	SE	SSE	S	SSW	SW	WSW	W	W	WNW	NW	NNW	N	SSW	SSW	N	N	NNW	NW	WSW	SW	S	ENE	ENE	ENE	E	SE		
Morgans Point	4	3	4	5	5	5	6	6	6	6	5	5	5	4	4	4	4	4	4	4	4	4	4	4	4	4	5	5	6	6	7	7	7	
	5	5	6	7	7	7	7	8	7	7	6	6	6	5	5	5	5	5	5	5	5	5	5	4	5	6	6	8	8	8	8	9	9	
	E	E	SE	SE	SSE	SE	SE	SSE	SSE	S	SSW	SW	WSW	W	W	WNW	NW	NNW	N	WNW	SW	N	NNW	W	SW	S	SSE	ESE	ESE	ESE	SE	S		
75/76	4	4	4	5	6	6	7	8	8	8	7	6	6	6	5	6	6	6	6	6	6	6	6	5	4	4	4	5	6	7	8	9	10	10
	6	6	7	7	8	8	8	9	9	9	8	7	7	6	6	6	6	6	6	6	7	6	6	6	5	4	4	5	6	7	8	9	10	11
	E	E	ESE	SE	SSE	SSE	SSE	SSE	S	S	SSW	SW	WSW	W	W	WNW	WNW	NW	NNW	N	NW	N	NW	ESE	E	ESE	SE	SE	SE	SSE	SSE	SSE	S	
63/64	4	4	4	5	6	7	8	8	8	8	7	6	6	6	5	5	5	5	5	5	6	6	6	5	4	4	4	5	6	7	8	9	10	11
	6	6	6	7	7	8	8	9	9	8	8	7	7	7	6	6	6	6	6	6	7	7	7	6	6	5	7	7	8	9	10	11	12	
	ENE	E	ESE	ESE	SE	SSE	SSE	SSE	S	S	SSW	SSW	WSW	W	W	WNW	WNW	NW	NNW	NW	N	N	N	SSE	ENE	E	ESE	SE	SE	SSE	SSE	S	SSW	
51/52	4	4	4	4	5	6	7	8	8	7	7	6	6	6	5	5	5	5	5	6	6	6	5	4	4	4	4	5	6	7	8	9	10	10
	6	6	6	6	7	7	8	9	8	8	8	7	6	6	6	6	5	5	5	5	6	7	7	6	6	5	6	7	7	8	9	10	11	
	ENE	E	ESE	ESE	SE	SSE	SSE	S	S	S	SSW	SSW	WSW	W	W	WNW	WNW	NW	NNW	NW	N	N	N	W	SSE	SE	SE	SE	SSE	S	S	SSW		
37/38	5	4	4	4	5	6	7	7	7	6	6	6	5	5	5	4	4	4	4	5	5	6	5	4	4	4	5	5	6	7	8	9	9	9
	6	6	6	6	6	7	7	8	7	7	7	7	6	6	5	5	5	4	4	5	6	7	6	6	6	6	7	7	8	9	9	10	9	
	ENE	E	E	ESE	SE	SSE	SSE	S	S	S	SSW	SW	WSW	W	W	WNW	WNW	NW	NNW	NNW	NW	N	N	WSW	S	SSE	SE	SE	SSE	S	S	S	SSW	
25/26	5	5	5	5	5	6	6	6	6	6	5	5	4	5	5	4	4	3	4	4	5	5	5	5	5	5	5	5	6	7	7	8	8	8
	6	6	6	6	6	6	6	7	6	6	6	6	5	4	4	4	4	4	4	5	5	6	6	6	6	6	6	7	8	8	8	9	8	
	ENE	E	E	ESE	SE	SSE	SSE	SSE	S	S	S	SSW	SW	WSW	W	WNW	WNW	NW	NNW	NNW	NNW	N	N	WSW	SSW	SSE	SE	SE	SSE	S	S	S	SSW	
11/12	6	5	5	5	5	6	6	6	6	6	6	6	5	5	5	4	4	4	4	4	5	6	5	5	5	5	5	6	7	7	8	8	8	
	6	6	6	6	6	6	6	7	7	7	6	6	6	6	5	5	4	4	4	4	5	6	6	6	6	6	6	7	8	8	8	9	8	
	ENE	E	E	ESE	SE	SSE	SSE	SSE	S	S	S	SSW	SSW	WSW	W	WNW	WNW	NW	NNW	NNW	NNW	N	N	NW	W	SSW	S	SSE	S	S	S	S	SSW	
1 & 2 Bravo	6	4	4	4	5	6	6	7	7	7	7	7	6	5	5	5	5	4	5	5	6	6	6	6	6	5	4	4	6	7	8	8	9	9
	7	6	6	5	6	6	7	8	7	7	7	7	7	6	6	6	5	5	4	5	6	7	7	6	6	6	6	7	8	8	9	10	10	
	ENE	E	E	ESE	SE	SSE	SSE	SSE	S	S	S	S	SSW	SW	WSW	WNW	NW	NW	NNW	NNW	NNW	N	N	N	N	NNW	SW	SSW	S	S	S	S	SSW	

**NOTE: This is automated data that may/may not agree with the official BAM thinking that's found on the daily slides or special visibility report slides. This data should be used as a guide only**

# Houston Pilots: Mon. 5/22/2023



## Forecast Discussion

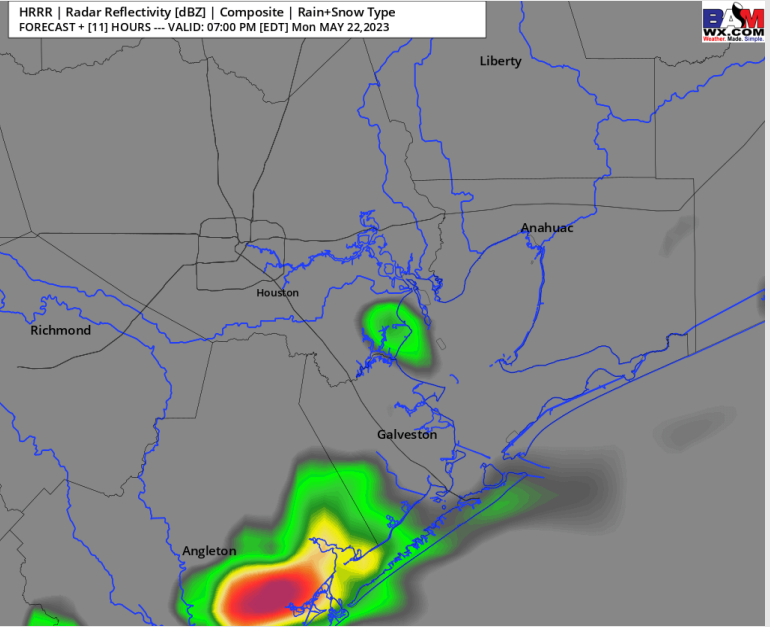
**Precip:** Favoring dry conditions for the better part of the day while better chances for showers / storms stay SW of stations. After 6 PM, a few scattered showers will work through the area, leaving dry conditions again by 10 PM. Showers are expected to be light to moderate, with a 30% chance to impact stations. Lightning chances are present under stronger storms.

**Wind:** Sustained winds out of the NE but will become more variable over the next couple of hours where all stations will see winds 3 – 5 kts.

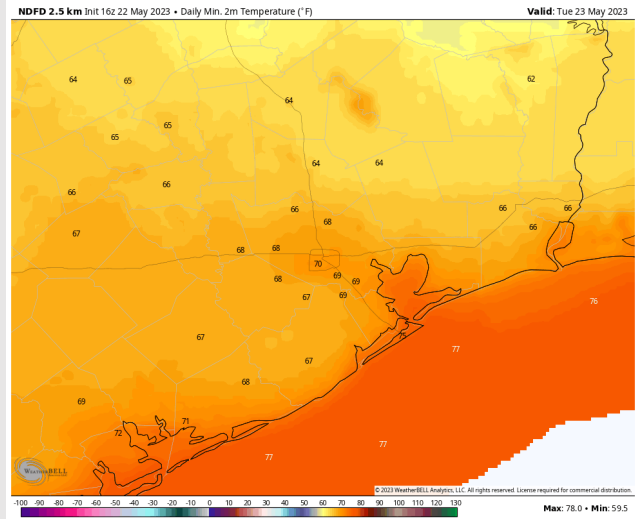
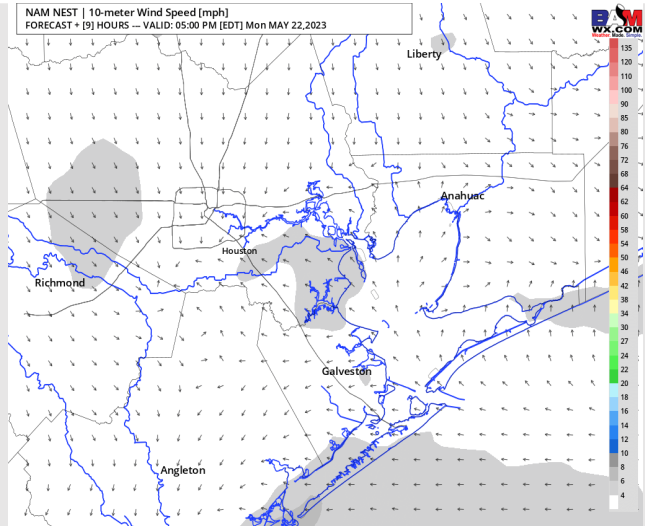
**Temps:** Low temperatures will be in the mid 70s for the Boarding Station and low 70s for all other stations.

**Visibility:** Not anticipating any visibility concerns at this time.

## Precip Image: 5 PM CT



Wind Speed:  
4 PM CT



Low Temps  
Tues AM

## Forecast Discussion

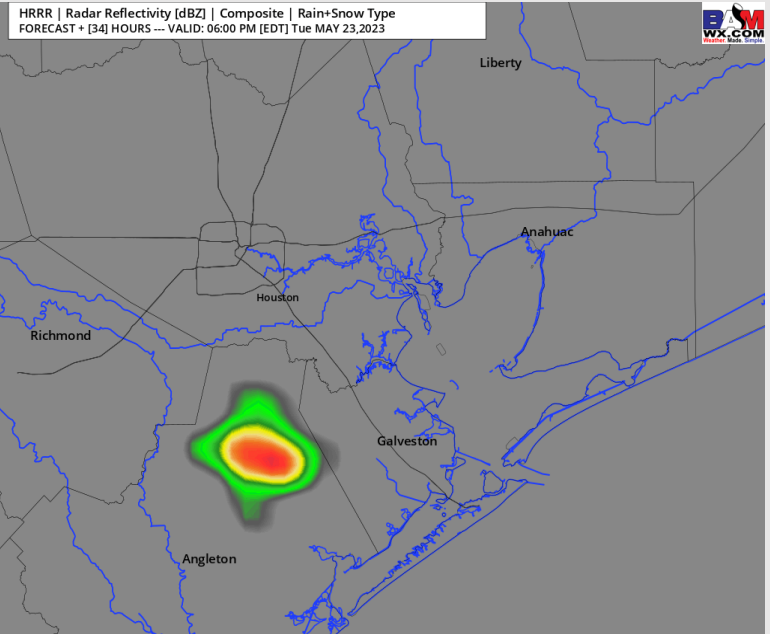
**Precip:** Favoring dry conditions for the better part of the day. Isolated shower/storm chances will remain to the SW, but a 10% chance of these showers impacting stations is possible. Lightning chances are present within storms

**Wind:** Sustained winds will begin out of the W Tuesday AM then gradually shift out of N by 8-9 AM. Then around the lunch timeframe, winds will become variable before shifting back out of the SSW by 8 PM. Winds throughout the day will range from 5-10 kts with gusts up to 12 kts.

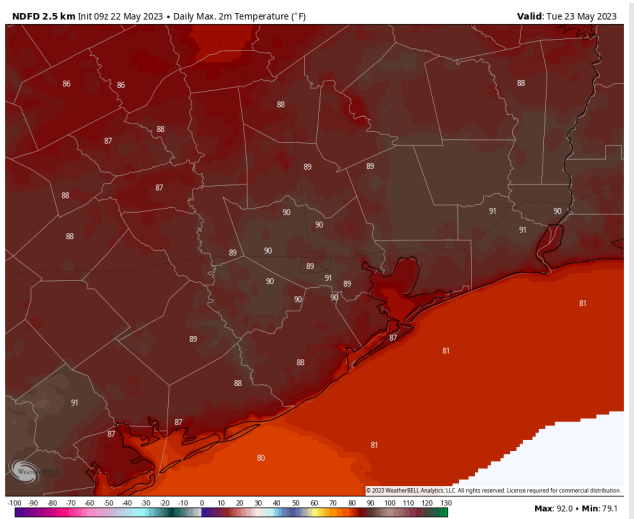
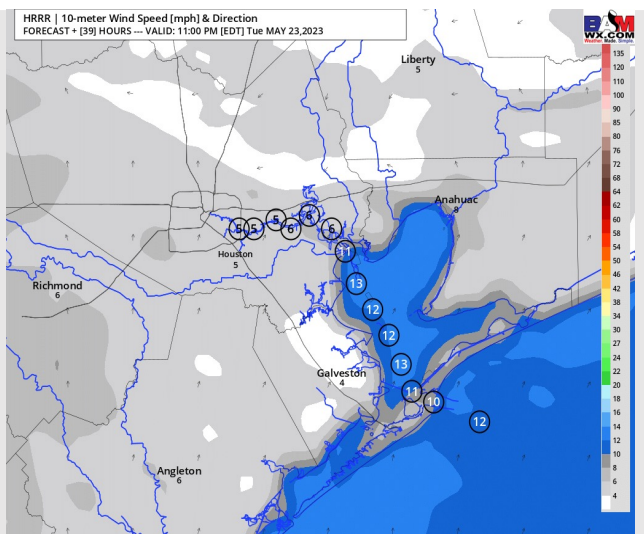
**Temps:** High temperatures Tuesday in the low 80s F for the Boarding Station with all other stations in the upper 80s near 90 F.

**Visibility:** Not anticipating any visibility concerns at this time.

## Precip Image: 5 PM CT



Wind Speed:  
10 PM CT



High Temps  
Tuesday

# Houston Pilots: Wed. 5/24/2023



## Forecast Discussion

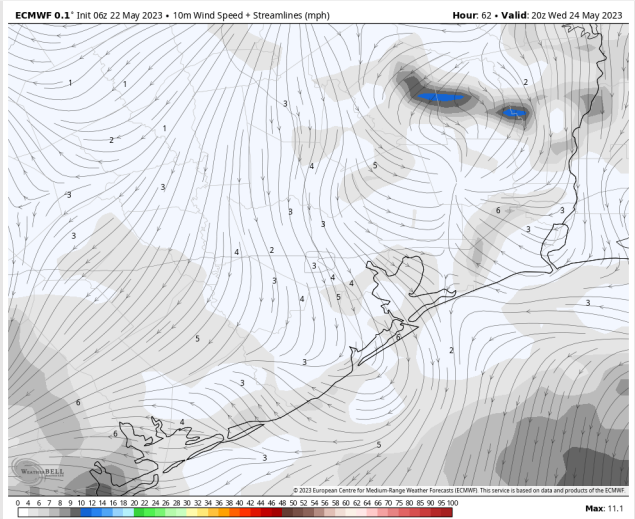
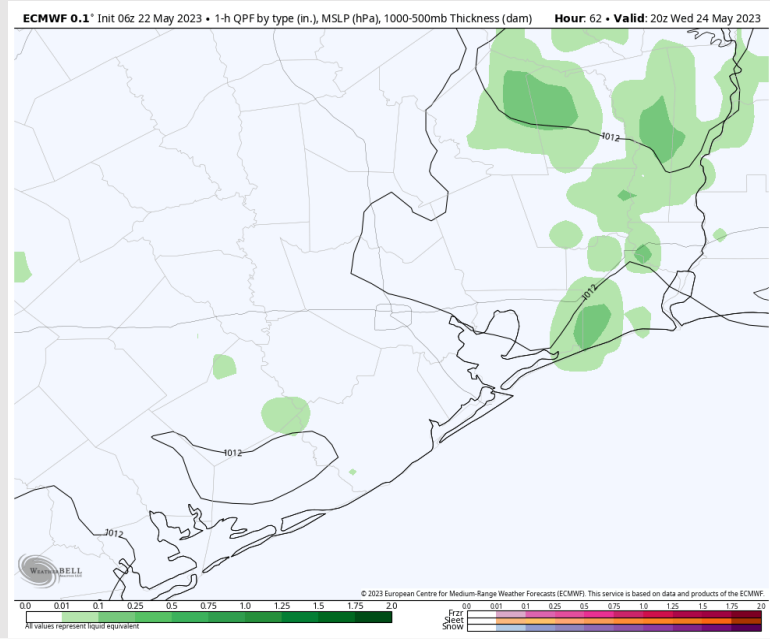
**Precip:** Favoring Wednesday morning to start off dry. Scattered showers and storms then expected to push in from the north around the 3PM timeframe and will continue through 9 PM, expected to remain mostly to the NE. 30% chance for rain to impact stations, with chances of lightning also possible.

**Wind:** Winds will start off calm for stations N of 11/12 while the boarding station sees 10-12 kts winds out of the W through 6 AM. Then anticipating winds to remain variable and calm at 3-8 kts throughout the rest of the day Wednesday.

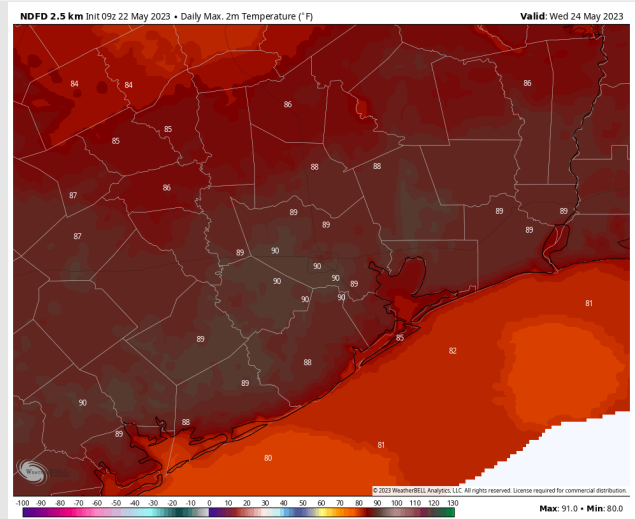
**Temps:** High temperatures in the low 80s F at the Boarding Station and in the upper 80s near 90 F for all other stations Wednesday.

**Visibility:** Not anticipating visibility concerns at this time.

## Precip Image: 3 PM CT



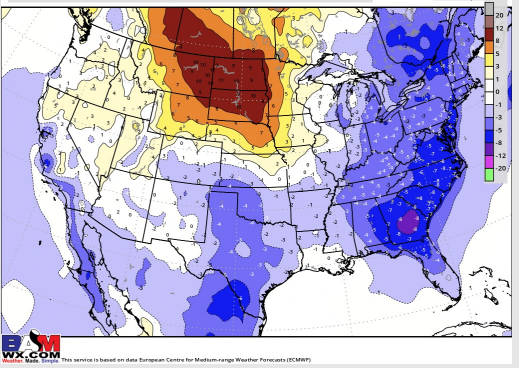
Wind Speed:  
4 PM CT



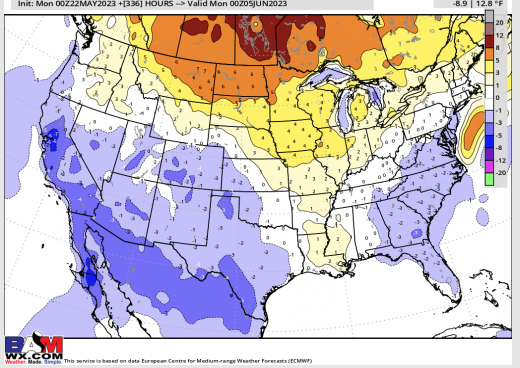
High Temps  
Wednesday

# Houston Pilots: 5/22/23

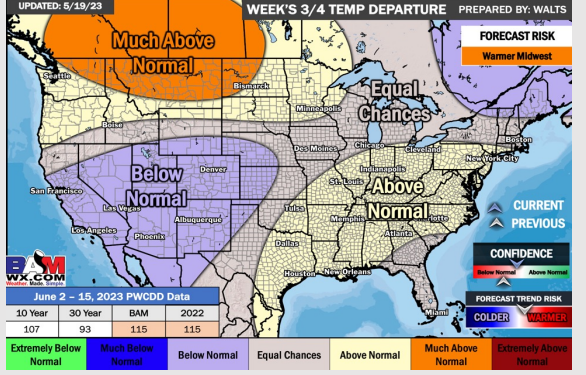
**Next 7 Day Temperature Departure**



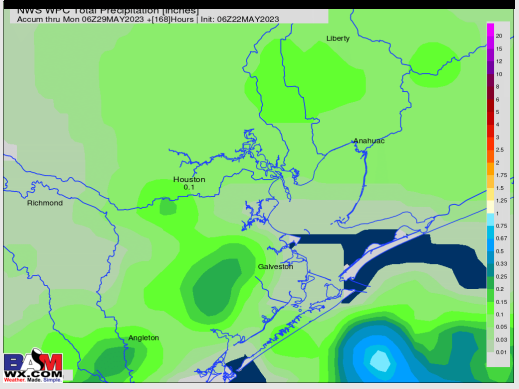
**8-14 Day Temperature Departure**



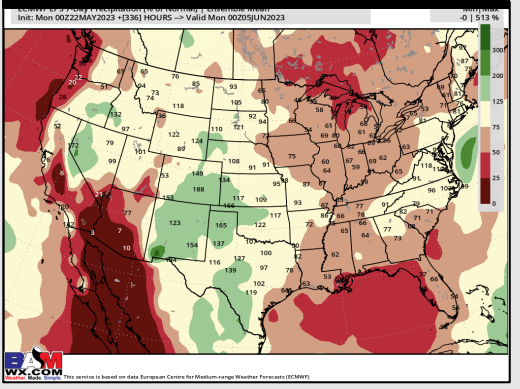
**15-30 Day Temperature Departure**



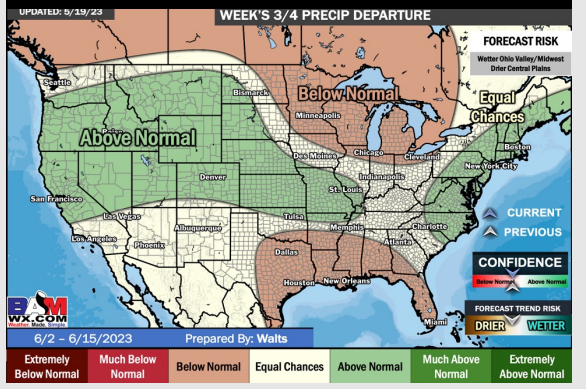
**Next 7 Day Total Precipitation**



**8-14 Day % of Average Precip.**



**15-30 Day % of Average Precip.**



- A few hit and miss rain chances over the next couple days with the better shot working in through a second half of the week. Favoring cooler than normal temperatures over the next week.
- Expecting slightly below normal precipitation chances and slightly below normal temperatures for the week 2 timeframe.
- Above normal temperatures and below normal chances for precipitation are favored in the week 3/4 timeframe.