

Houston Pilots Forecast Package

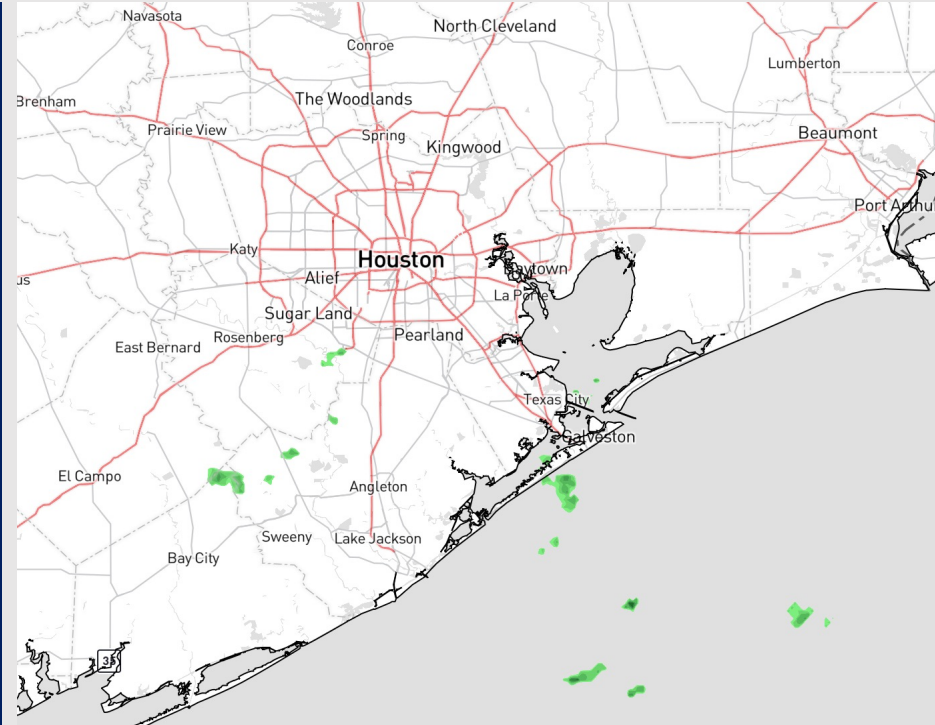


Updated: 1:00 PM CT
Sunday, May 21, 2023

Forecaster: Alyssa McClung

Weather Headlines

- A few hit and miss rain chances possible this afternoon with sporadic rain chances being the case over the next couple of days.
- Winds overall will stay below 15 kts throughout today through Tuesday for all stations.
- Not anticipating any issues with fog development over the next few days.



Radar/NWS Alerts: 1:00 PM CT



As always, please do not hesitate to reach out to us with any forecast questions via the chat option on the Weather Porthole or our on-call number, **(317)-560-8122** press 1 for forecast questions.

Houston Pilots Extended Range Visibility Report



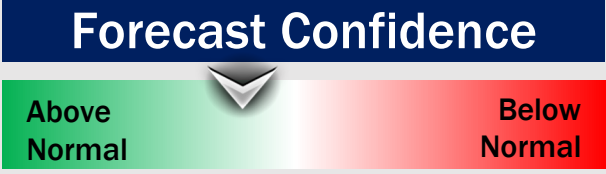
Wednesday 5/24/23

Not anticipating any sea fog concerns at this time.



Thursday 5/25/23

Radiation Fog possible for stations NE of Morgan's Point Thursday morning creating a very low end risk for slightly reduced visibility.



Friday 5/26/23

Radiation Fog possible Friday morning mostly NW of stations, however stations N of Morgan's Point at a low end risk for reduced visibility.



Chance for Reduced Visibility

Wednesday AM	Unlikely
Wednesday PM	Unlikely
Thursday AM	Possible
Thursday PM	Unlikely
Friday AM	Possible
Friday PM	Unlikely

Houston Pilots Visibility Chart (miles)



Forecast Confidence



Time	Sun 12pm	Sun 1pm	Sun 2pm	Sun 3pm	Sun 4pm	Sun 5pm	Sun 6pm	Sun 7pm	Sun 8pm	Sun 9pm	Sun 10pm	Sun 11pm	Mon 12am	Mon 1am	Mon 2am	Mon 3am	Mon 4am	Mon 5am	Mon 6am	Mon 7am	Mon 8am	Mon 9am	Mon 10am	Mon 11am	Mon 12pm	Mon 1pm	Mon 2pm	Mon 3pm	Mon 4pm	Mon 5pm	Mon 6pm	Mon 7pm	Mon 8pm
610 Bridge	9	9	9	9	8	9	9	9	9	10	10	10	10	10	10	10	9	10	10	10	10	9	9	9	9	8	8	8	7	8	8	9	9
Kinder 1	9	9	8	9	8	8	9	9	9	10	10	10	10	10	10	10	10	10	10	10	10	9	9	9	9	9	10	10	10	10	9	9	9
Greens Bayou	10	9	9	9	9	9	10	10	10	10	10	10	10	10	10	10	10	10	10	10	10	10	10	10	10	10	10	10	10	10	10	10	
Shell Crude	9	8	8	8	8	8	9	9	9	10	10	10	10	10	10	10	10	10	10	10	10	10	10	10	10	10	10	10	10	10	10	10	
Lynchburg Ferries	10	9	9	9	9	9	10	10	10	10	10	10	10	10	10	10	10	10	10	10	10	10	10	10	10	10	10	10	10	10	10	10	
Exxon 3	10	10	10	10	10	10	10	10	10	10	10	10	10	10	10	10	10	10	10	10	10	10	10	10	10	10	10	10	10	10	10	10	10
Morgans Point	10	10	10	10	10	10	10	10	10	10	10	10	10	10	10	10	10	10	10	10	10	10	10	10	10	10	10	10	10	10	10	10	10
75/76	10	10	10	10	10	10	10	10	10	10	10	10	10	10	10	10	10	10	10	10	10	10	10	10	10	10	10	10	10	10	10	10	10
63/64	10	10	10	10	10	10	10	10	10	10	10	10	10	10	10	10	10	10	10	10	10	10	10	10	10	10	10	10	10	10	10	10	10
51/52	10	10	10	10	10	10	10	10	10	10	10	10	10	10	10	10	10	10	10	10	10	10	10	10	10	10	10	10	10	10	10	10	10
37/38	10	10	10	10	10	10	10	10	10	10	10	10	10	10	10	10	10	10	10	10	10	10	10	10	10	10	10	10	10	10	10	10	10
25/26	10	10	10	10	10	10	10	10	10	10	10	10	10	10	10	10	10	10	10	10	10	10	10	10	10	10	10	10	10	10	10	10	10
11/12	10	10	10	10	10	10	10	10	10	10	10	10	10	10	10	10	10	10	10	10	10	10	10	10	10	10	10	10	10	10	10	10	10
1 & 2 Bravo	10	10	10	10	10	10	10	10	10	10	10	10	10	10	10	10	10	10	10	10	10	10	10	10	10	10	10	10	10	10	10	10	10

NOTE: This is automated data that may/may not agree with the official BAM thinking that's found on the daily slides or special visibility report slides. This data should be used as a guide only

Houston Pilots Wind Chart



Forecast Confidence



Example

Sustained wind 13 Knots
Gusts 18 Knots
Wind from the N

WS: 13
G:18
N

Time Knots	Sun 12pm	Sun 1pm	Sun 2pm	Sun 3pm	Sun 4pm	Sun 5pm	Sun 6pm	Sun 7pm	Sun 8pm	Sun 9pm	Sun 10pm	Sun 11pm	Mon 12am	Mon 1am	Mon 2am	Mon 3am	Mon 4am	Mon 5am	Mon 6am	Mon 7am	Mon 8am	Mon 9am	Mon 10am	Mon 11am	Mon 12pm	Mon 1pm	Mon 2pm	Mon 3pm	Mon 4pm	Mon 5pm	Mon 6pm	Mon 7pm	Mon 8pm	
610 Bridge	6	5	5	5	6	6	6	6	5	4	4	3	3	3	3	5	4	4	4	4	5	4	5	5	4	3	4	4	5	5	4	5	5	4
	NNE	NNE	NNE	N	S	N	S	WSW	N	N	NNE	NNE	NNE	ENE	E	N	N	NNE	NNE	NE	NE	ENE	ENE	ENE	NE	NNE	NNE	NNE	NE	NE	ENE	ESE	SSE	
Kinder 1	6	5	5	6	6	6	6	6	5	4	4	3	3	3	3	5	4	4	4	5	4	5	4	5	4	4	4	5	5	5	5	4	5	
	NNE	NNE	NNE	NNE	SSE	N	W	WNW	N	N	NNE	NNE	NNE	ENE	ENE	N	N	NNE	NNE	NE	NE	ENE	ENE	ENE	NE	NNE	NNE	NNE	NE	ENE	ESE	SSE		
Greens Bayou	6	5	6	6	6	6	6	6	5	4	3	3	3	3	4	5	4	4	5	4	5	4	5	4	4	4	4	5	5	5	5	4	5	
	NNE	NNE	NNE	ESE	WNW	N	N	N	N	N	NNE	NNE	NNE	NNE	N	NNE	N	NNE	NNE	NE	NE	ENE	ENE	ENE	NE	NNE	NNE	NNE	NE	ENE	ESE	SSE		
Shell Crude	6	6	6	6	6	6	6	6	5	4	4	4	3	3	4	4	5	5	5	5	5	5	5	4	4	4	5	5	5	5	5	4	5	
	NNE	NNE	NNE	SSE	WNW	N	N	N	NNE	N	NNE	NNE	NNE	NNE	N	NE	N	NNE	NNE	NE	NE	ENE	ENE	ENE	NE	NNE	NNE	NNE	NE	ENE	ESE	SSE		
Lynchburg Ferries	6	5	6	6	6	6	7	7	6	5	4	4	4	4	4	5	5	5	5	6	6	6	5	5	4	4	4	5	5	5	5	5	4	
	NNE	NNE	NNE	W	NNW	N	N	NNW	N	N	NNE	NNE	NNE	N	N	NNE	NNE	NNE	NE	NE	ENE	ENE	ENE	NE	E	NNE	NNE	NE	ENE	ESE	SSE			
Exxon 3	6	5	5	6	6	6	7	7	6	5	5	5	4	4	5	5	6	6	6	6	6	6	5	4	4	4	5	5	5	5	5	4	5	
	NNE	NNE	NNE	SSW	NW	NNW	N	NW	ESE	N	NNE	NNE	NNE	N	N	NNE	NNE	NNE	NE	NE	ENE	ENE	ENE	ENE	ENE	NE	E	E	NE	ENE	ESE	SSE		
Morgans Point	6	5	5	6	6	7	8	8	7	7	6	6	5	5	6	6	7	7	8	8	7	7	6	5	4	4	5	5	6	6	6	6	6	
	NNE	NNE	NNE	SE	SSE	SW	N	NNW	ESE	N	NNE	NNE	NNE	NNE	N	N	NNE	NNE	NE	NE	ENE	ENE	ENE	ENE	ENE	E	SE	ESE	ESE	ESE	SSE	SSE		
75/76	7	6	5	6	7	8	9	10	10	9	8	8	7	7	7	8	9	10	10	11	10	9	8	6	5	5	5	6	6	6	7	8	8	
	NE	NE	NNE	ENE	E	ENE	W	WNW	ENE	N	NNE	NNE	NNE	NNE	NNE	NNE	NNE	NNE	NE	NE	ENE	ENE	ENE	ENE	E	E	ESE	SE	SE	SE	SSE	SSE	SSW	
63/64	8	6	6	6	6	8	9	10	10	9	9	9	8	8	8	9	10	11	11	12	11	10	8	7	5	5	5	6	6	6	7	8	9	8
	NNE	NNE	NNE	NE	SSW	SE	E	SSW	N	NNE	NNE	NNE	NE	NE	NE	NNE	NNE	NNE	NE	NE	ENE	ENE	ENE	ENE	ENE	E	E	ESE	SE	SSE	SSE	SSE	SSW	
51/52	7	7	6	6	7	7	8	9	9	9	8	8	8	8	7	8	9	10	10	11	11	10	8	7	5	5	5	6	6	7	8	8	7	
	NNE	NNE	NNE	SSE	WSW	W	SSE	S	NE	NNE	NNE	NE	NE	NE	NE	NNE	NNE	NNE	NE	NE	ENE	ENE	ENE	ENE	ENE	E	ESE	SSE	SSE	SSE	SSE	SSW		
37/38	8	7	7	7	7	7	7	8	8	8	8	8	7	7	7	8	9	10	10	11	10	10	8	7	5	6	6	6	7	7	8	8	6	
	NNE	NNE	NNE	SW	W	NW	SW	SE	SE	NNE	NNE	NE	NE	NE	NE	NNE	NNE	NNE	NE	NE	ENE	ENE	ENE	ENE	ENE	E	ESE	SE	SSE	SSE	SSE	SSW		
25/26	8	7	7	7	7	7	7	7	7	7	7	7	6	6	6	6	6	6	6	7	7	8	8	7	6	6	6	6	6	7	7	7	6	
	NNE	NNE	NNE	S	W	WNW	SW	S	SE	NNE	NNE	NE	NE	NE	NE	NNE	NNE	NNE	NE	NE	ENE	ENE	ENE	ENE	ENE	E	ESE	SE	SSE	SSE	SSE	SSW		
11/12	8	7	6	6	7	6	6	7	6	7	7	7	6	6	6	7	7	8	8	9	9	9	8	7	6	6	6	6	6	6	7	7	6	
	NE	NE	NNE	SE	NW	NNW	W	WSW	ENE	NNE	NNE	NE	NE	NE	NE	NNE	NNE	NNE	NE	NE	ENE	ENE	ENE	ENE	ENE	E	ESE	SE	SSE	SSE	SSE	SSE	SSW	
1 & 2 Bravo	9	7	6	5	6	6	6	7	7	8	8	8	7	7	7	7	8	9	10	10	10	10	9	8	7	6	5	6	6	6	7	7	7	
	NE	NE	NE	NNE	WSW	NNW	N	N	WNW	NNE	NNE	NE	NE	NE	NE	NNE	NNE	NNE	NNE	NE	NE	ENE	ENE	ENE	ENE	E	ESE	SE	SSE	SSE	SSE	SSE	SSW	

NOTE: This is automated data that may/may not agree with the official BAM thinking that's found on the daily slides or special visibility report slides. This data should be used as a guide only

Houston Pilots: Sun. 5/21/2023



Forecast Discussion

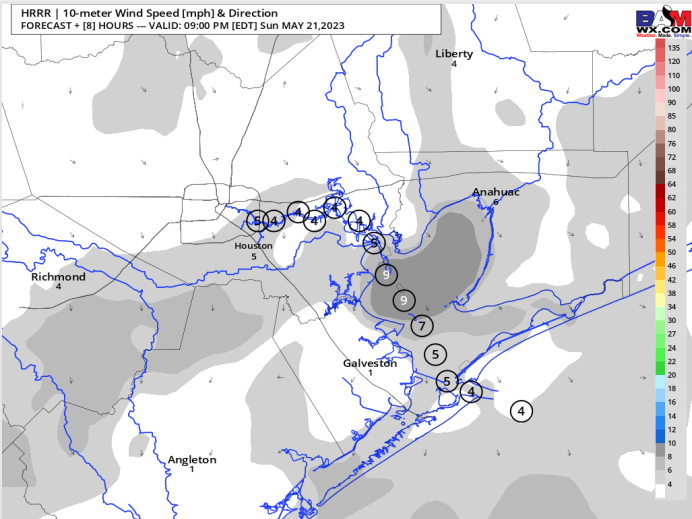
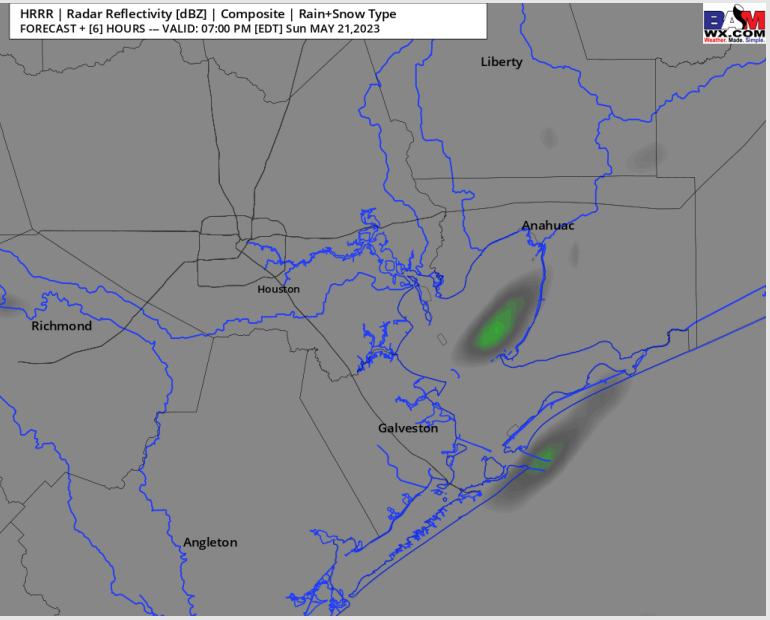
Precip: Light showers will be continue this afternoon with activity gradually weakening as it pushes eastward. Favoring the remainder of the PM to see dry conditions after 4PM.

Wind: Sustained winds out of the NE-ENE gradually turning from the N by 5 PM for all stations. Winds gradually calming through the PM to the 3 – 8 kts range for all stations.

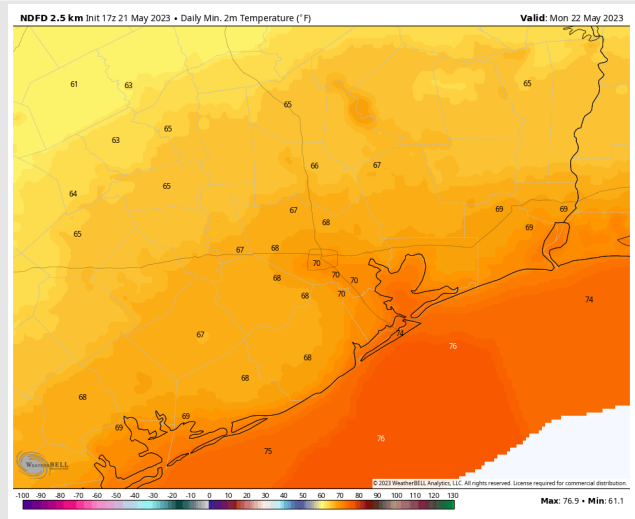
Temps: Favoring the low temperatures Monday morning to be in the mid to upper 70s F for stations South of Morgan’s Point and in the low to near 70(s) F for stations North of Morgan’s Point.

Visibility: Not anticipating visibility concerns at this time.

Precip Image: 6 PM CT



**Wind Speed:
8 PM CT**



**Low Temps
Monday AM**

Forecast Discussion

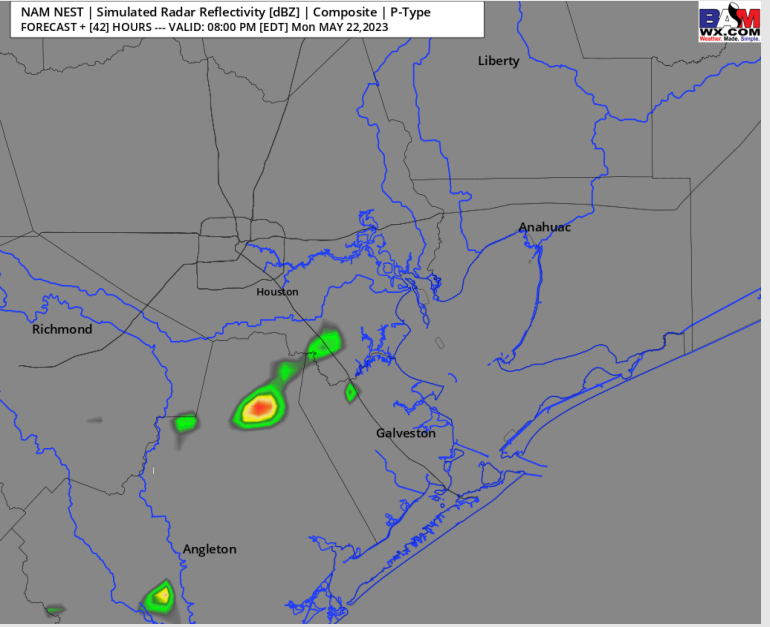
Precip: Favoring dry conditions through the morning early Monday while better chances for showers / storms stay SW of stations. After 6 PM, a few scattered showers will work through the area, then leaving dry conditions again after sunset.

Wind: Sustained winds will begin out of the NNE Monday AM at 8-13 kts. Winds will then gradually shift out of the E through the late AM before becoming variable after the lunch timeframe where all stations will see winds 3 - 5 kts.

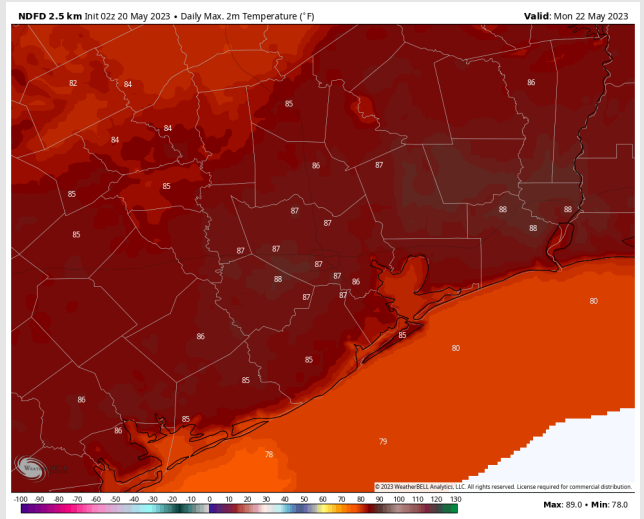
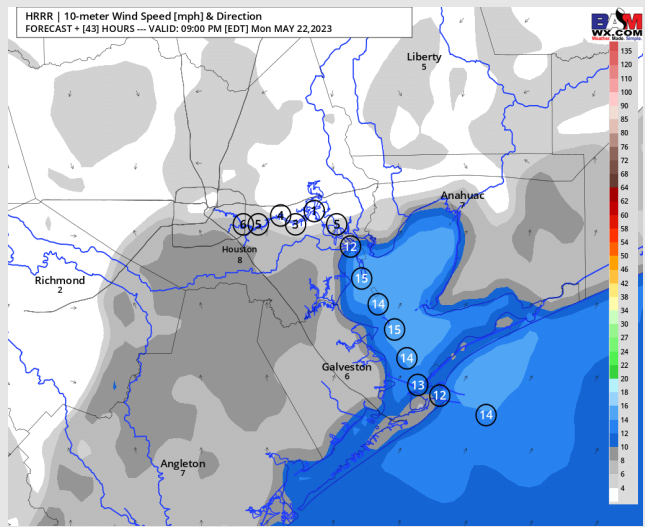
Temps: High temperatures Monday near 80s F for stations south of Morgan's Point and in the upper 80s F north of Morgan's Point.

Visibility: Not anticipating any visibility concerns at this time.

Precip Image: 7 PM CT



**Wind Speed:
8 PM CT**



**High Temps
Monday**

Forecast Discussion

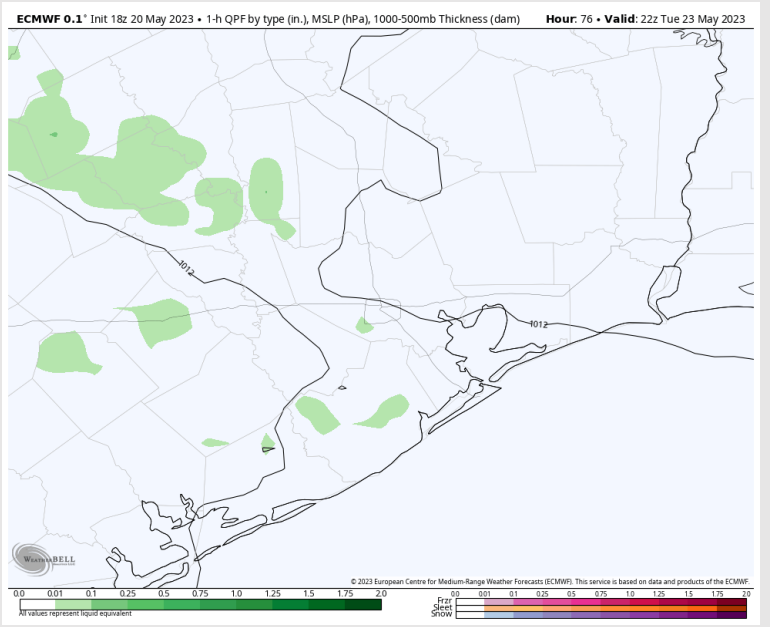
Precip: A few hit and miss showers will be possible between 3-7 PM, however favoring the better shot for rain to stay NW of stations.

Wind: Sustained winds will begin out of the W Tuesday AM then gradually shift out of N by late AM. Then around the lunch timeframe, winds will become variable before shifting back out of the SSW. Winds throughout the day will range form 3-8 kts with gusts up to 12 kts.

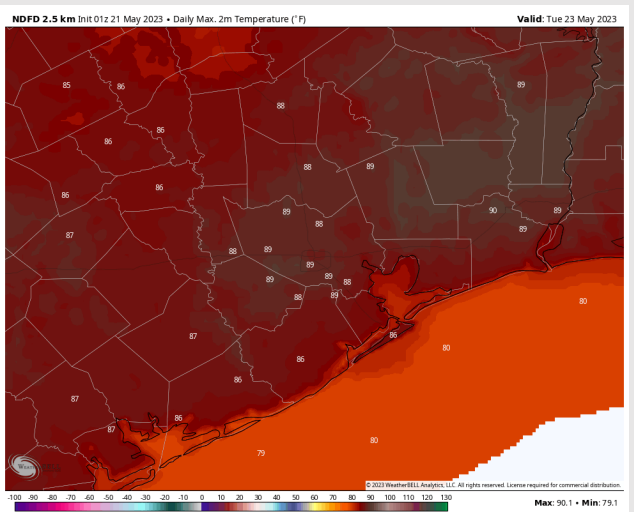
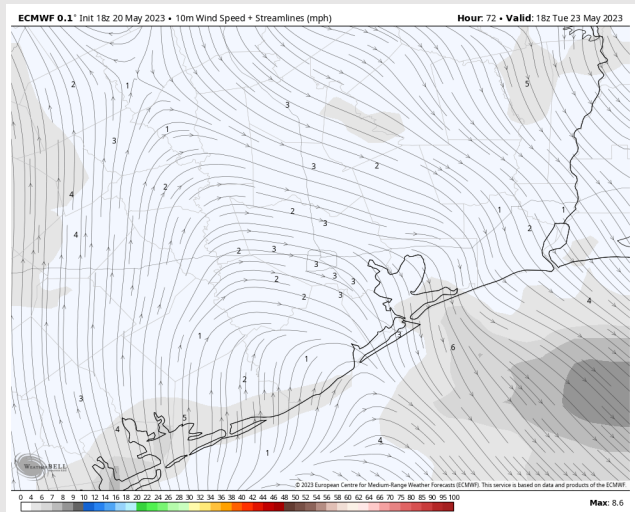
Temps: High temperatures Tuesday in the low 80s F with all other stations in the mid to upper 80s F.

Visibility: Not anticipating any visibility concerns.

Precip Image: 5 PM CT



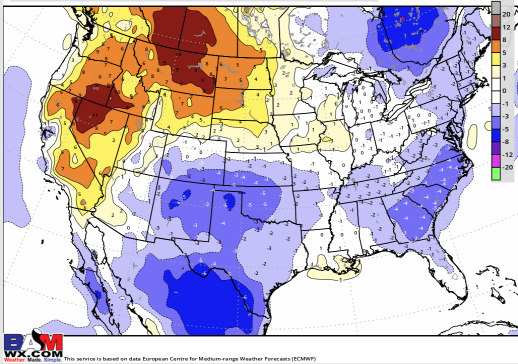
Wind Speed:
1 PM CT



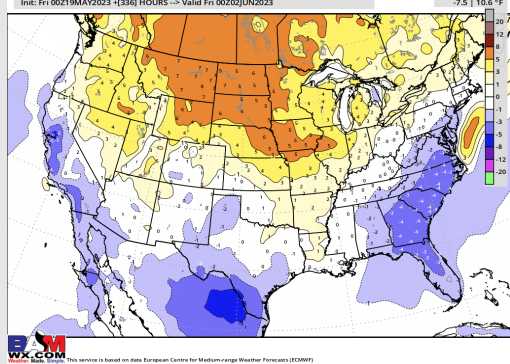
High Temps
Tuesday AM

Houston Pilots: 5/21/23

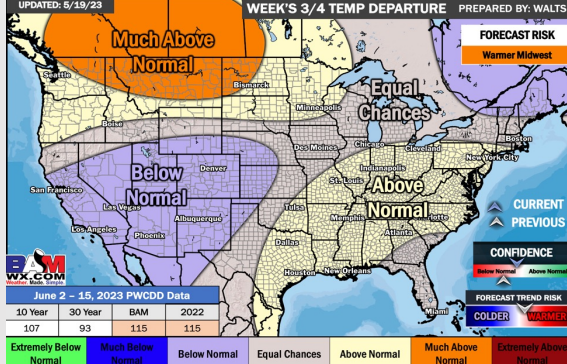
Next 7 Day Temperature Departure



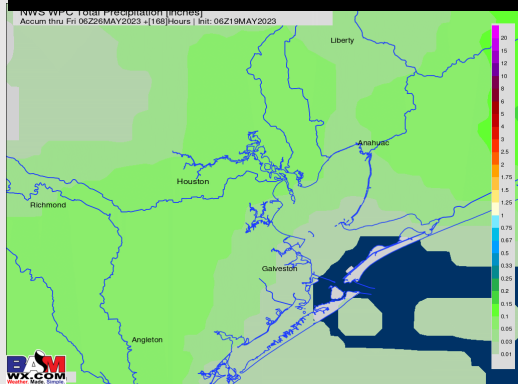
8-14 Day Temperature Departure



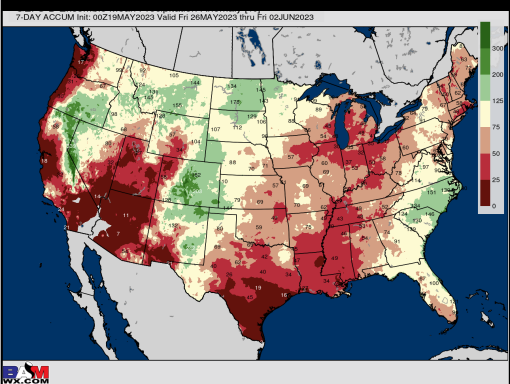
15-30 Day Temperature Departure



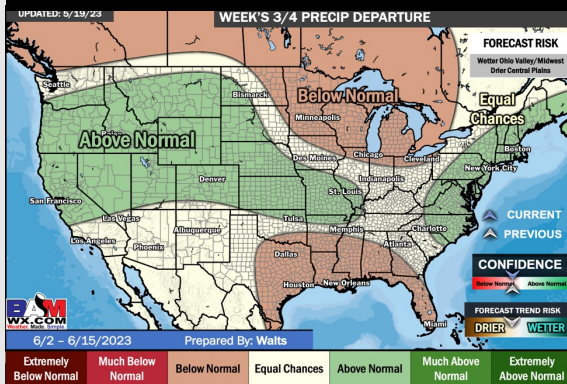
Next 7 Day Total Precipitation



8-14 Day % of Average Precip.



15-30 Day % of Average Precip.



- The next best rain chance coming early next week. A few ups and downs are expected over the next 2 weeks with primarily cooler than normal temperatures expected during this time.
- Expecting below normal precipitation chances and slightly below normal temperatures for the week 2 timeframe.
- Above normal temperatures and below normal chances for precipitation are favored in the week 3/4 timeframe.