

Houston Pilots Forecast Package



Updated: 4:45 AM CT

Saturday, May 20, 2023

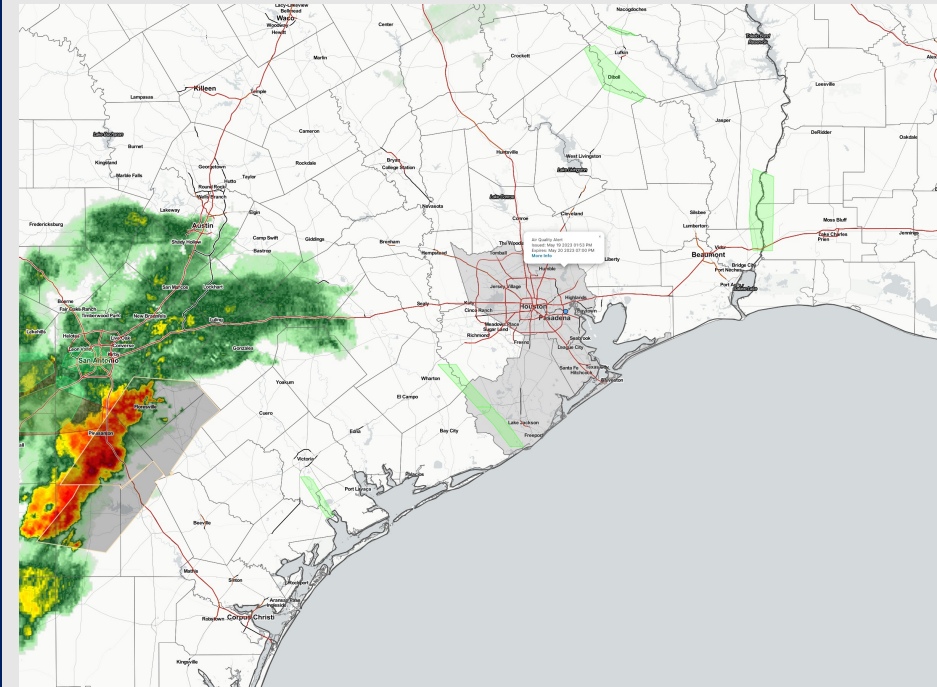
Forecaster: John Kemper

Weather Headlines

➤ Widespread activity across S Texas will continue to weaken/dissipate, with low end chances for Saturday/Sunday PM.

➤ Winds overall will stay below 15kts throughout the weekend for all stations.

➤ Not anticipating any issues with fog development over the next few days.



Radar/NWS Alerts: 4:30 AM CT



As always, please do not hesitate to reach out to us with any forecast questions via the chat option on the Weather Porthole or our on-call number, **(317)-560-8122** press 1 for forecast questions.

Houston Pilots Extended Range Visibility Report



Tuesday 5/23/23

Not anticipating any sea fog concerns at this time.



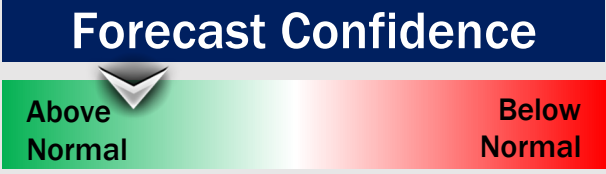
Thursday 5/25/23

Radiation Fog possible NE of stations Wednesday morning however not favoring any impacts / reduced visibility issues for the stations at this time.



Wednesday 5/24/23

Radiation Fog possible for stations N of Morgan's Point Wednesday morning however not favoring any impacts / reduced visibility issues for the stations at this time.



Chance for Reduced Visibility

Tuesday AM	Unlikely
Tuesday PM	Unlikely
Wednesday AM	Possible
Wednesday PM	Unlikely
Thursday AM	Possible
Thursday PM	Unlikely

Houston Pilots Visibility Chart (miles)



Forecast Confidence



Time	Sat 4am	Sat 5am	Sat 6am	Sat 7am	Sat 8am	Sat 9am	Sat 10am	Sat 11am	Sat 12pm	Sat 1pm	Sat 2pm	Sat 3pm	Sat 4pm	Sat 5pm	Sat 6pm	Sat 7pm	Sat 8pm	Sat 9pm	Sat 10pm	Sat 11pm	Sun 12am	Sun 1am	Sun 2am	Sun 3am	Sun 4am	Sun 5am	Sun 6am	Sun 7am	Sun 8am	Sun 9am	Sun 10am	Sun 11am	Sun 12pm	Sun 1pm	Sun 2pm
610 Bridge	10	10	10	10	10	10	10	10	10	10	10	10	10	10	10	10	10	10	10	10	10	10	10	10	10	10	10	10	10	10	10	10	10	10	10
Kinder 1	10	10	10	10	10	10	10	10	10	10	10	10	10	10	10	10	10	10	10	10	10	10	10	10	10	10	10	10	10	10	10	10	10	10	10
Greens Bayou	10	10	10	10	10	10	10	10	10	10	10	10	10	10	10	10	10	10	10	10	10	10	10	10	10	10	10	10	10	10	10	10	10	10	10
Shell Crude	10	10	10	10	10	10	10	10	10	10	10	10	10	10	10	10	10	10	10	10	10	10	10	10	10	10	10	10	10	10	10	10	10	10	10
Lynchburg Ferries	10	10	10	10	10	10	10	10	10	10	10	10	10	10	10	10	10	10	10	10	10	10	10	10	10	10	10	10	10	10	10	10	10	10	10
Exxon 3	10	10	10	10	10	10	10	10	10	10	10	10	10	10	10	10	10	10	10	10	10	10	10	10	10	10	10	10	10	10	10	10	10	10	10
Morgans Point	10	10	10	10	10	10	10	10	10	10	10	10	10	10	10	10	10	10	10	10	10	10	10	10	10	10	10	10	10	10	10	10	10	10	10
75/76	10	10	10	10	10	10	10	10	10	10	10	10	10	10	10	10	10	10	10	10	10	10	10	10	10	10	10	10	10	10	10	10	10	10	10
63/64	10	10	10	10	10	10	10	10	10	10	10	10	10	10	10	10	10	10	10	10	10	10	10	10	10	10	10	10	10	10	10	10	10	10	10
51/52	10	10	10	10	10	10	10	10	10	10	10	10	10	10	10	10	10	10	10	10	10	10	10	10	10	10	10	10	10	10	10	10	10	10	10
37/38	10	10	10	10	10	10	10	10	10	10	10	10	10	10	10	10	10	10	10	10	10	10	10	10	10	10	10	10	10	10	10	10	10	10	10
25/26	10	10	10	10	10	10	10	10	10	10	10	10	10	10	10	10	10	10	10	10	10	10	10	10	10	10	10	10	10	10	10	10	10	10	10
11/12	10	10	10	10	10	10	10	10	10	10	10	10	10	10	10	10	10	10	10	10	10	10	10	10	10	10	10	10	10	10	10	10	10	10	10
1 & 2 Bravo	10	10	10	10	10	10	10	10	10	10	10	10	10	10	10	10	10	10	10	10	10	10	10	10	10	10	10	10	10	10	10	10	10	10	10

NOTE: This is automated data that may/may not agree with the official BAM thinking that's found on the daily slides or special visibility report slides. This data should be used as a guide only

Houston Pilots Wind Chart



Example

Sustained wind 13 Knots

Gusts 18 Knots

Wind from the N

WS: 13
G:18
N

Time Knots	Sat 4am	Sat 5am	Sat 6am	Sat 7am	Sat 8am	Sat 9am	Sat 10am	Sat 11am	Sat 12pm	Sat 1pm	Sat 2pm	Sat 3pm	Sat 4pm	Sat 5pm	Sat 6pm	Sat 7pm	Sat 8pm	Sat 9pm	Sat 10pm	Sat 11pm	Sun 12am	Sun 1am	Sun 2am	Sun 3am	Sun 4am	Sun 5am	Sun 6am	Sun 7am	Sun 8am	Sun 9am	Sun 10am	Sun 11am	Sun 12pm	Sun 1pm	Sun 2pm				
610 Bridge	4	4	4	4	5	5	6	7	7	6	7	7	7	7	7	8	7	6	6	7	7	7	7	7	7	7	7	7	6	6	6	7	6	6	6	6			
W	WNW	W	WNW	NW	NW	NW	NNW	NNW	NNW	N	N	NNW	NNW	NNW	N	NNW	NNW	N	N	N	NNE	NNE	NNE	NNE	NNE	NNE	NNE	NE	NE	NE	NE	NE	NE	NNE	NNE				
Kinder 1	4	4	4	4	5	5	6	7	7	6	7	7	7	7	7	8	7	6	6	7	7	7	7	7	7	7	7	6	6	7	7	6	6	6	6				
W	WNW	W	WNW	NW	NW	NW	NNW	NNW	NNW	N	N	N	N	N	N	NNW	NNW	N	N	N	N	NNE	NNE	NNE	NNE	NNE	NNE	NE	NE	NE	NE	NE	NE	NNE	NNE				
Greens Bayou	4	4	4	4	5	5	6	6	7	7	7	7	7	7	7	8	7	6	6	7	7	7	7	7	7	7	7	6	6	7	7	6	6	6	6				
W	WNW	W	WNW	NW	NW	NW	NNW	NNW	NNW	N	N	N	N	N	N	NNW	NNW	N	N	N	N	NNE	NNE	NNE	NNE	NNE	NNE	NE	NE	NE	NE	NE	NE	NE	NNE	NNE			
Shell Crude	4	4	4	4	5	5	6	6	7	7	7	7	7	7	7	8	7	6	6	7	7	7	7	7	7	7	7	6	6	7	7	6	6	6	6				
W	WNW	W	WNW	NW	NW	NW	NNW	NNW	NNW	N	N	N	N	N	N	NNW	NNW	N	N	N	N	NNE	NNE	NNE	NNE	NNE	NNE	NE	NE	NE	NE	NE	NE	NE	NNE	NNE			
Lynchburg Ferries	5	4	4	5	6	5	6	6	7	7	7	7	7	7	7	8	7	6	6	7	7	7	7	7	7	7	7	6	6	7	7	6	6	6	6				
W	WNW	WNW	WNW	NW	NNW	NNW	NNW	NNW	NNW	NNW	NNW	NNW	NNW	NNW	NNW	N	N	N	N	N	N	NNE	NNE	NNE	NNE	NNE	NNE	NE	NE	NE	NE	NE	NE	NE	NNE	NNE			
Exxon 3	5	5	5	5	6	6	6	6	6	6	6	7	7	7	7	8	8	8	8	8	8	8	8	8	8	8	8	7	7	7	7	6	6	6	6				
W	WNW	WNW	WNW	NW	NW	NNW	NNW	NNW	NNW	NNW	NNW	NNW	NNW	NNW	NNW	N	N	N	N	N	N	NNE	NNE	NNE	NNE	NNE	NNE	NE	NE	NE	NE	NE	NE	NE	NNE	NNE			
Morgans Point	6	6	6	6	7	6	7	6	6	6	6	7	7	7	7	8	8	8	8	8	8	8	8	8	8	8	8	7	7	7	7	6	6	6	6				
W	WNW	WNW	WNW	NW	NW	NNW	NNW	NNW	NNW	NNW	NW	NW	NNW	NNW	NNW	NNW	NNW	N	N	N	N	NNE	NNE	NNE	NNE	NNE	NNE	NE	NE	NE	NE	NE	NE	NE	NE	NNE	NNE		
75/76	8	8	8	8	8	8	7	7	6	6	6	7	8	8	8	9	10	10	10	9	9	11	11	11	11	11	11	12	12	12	12	11	10	9	7	6	6		
W	WNW	WNW	WNW	WNW	NW	NNW	NNW	NNW	NNW	W	SSW	WSW	NW	NNW	NW	NNW	NNW	N	N	N	N	NNE	NNE	NNE	NNE	NE	NE	NE	NE	NE	NE	NE	NE	NE	NE	NNE	NNE		
63/64	9	8	8	8	9	9	7	7	6	6	6	7	8	9	10	10	10	10	9	9	11	12	12	12	12	12	12	12	12	12	12	11	10	9	7	6	6		
W	WNW	WNW	WNW	WNW	NW	NW	NNW	NNW	NNW	WSW	SW	S	SSW	W	NNW	WNW	NW	NNW	N	N	NNE	NNE	NNE	NNE	NE	NE	NE	NE	NE	NE	NE	NE	NE	NE	NE	NE	NNE	NNE	
51/52	8	8	8	8	8	9	7	7	6	6	6	6	7	8	9	9	9	9	8	8	9	11	12	12	12	12	12	12	12	12	12	11	10	9	8	7	7		
W	WNW	WNW	WNW	WNW	NW	NW	NNW	NNW	NNW	WNW	W	WSW	WSW	NW	NW	NNW	WNW	NW	NNW	N	NNE	NNE	NNE	NNE	NE	NE	NE	NE	NE	NE	NE	NE	NE	NE	NE	NE	NNE	NNE	
37/38	7	7	7	7	8	8	7	7	6	6	6	6	7	7	8	8	8	7	8	10	11	11	11	11	11	11	11	12	12	12	11	10	9	8	7	7			
W	WNW	WNW	WNW	WNW	NW	NW	NNW	NNW	NNW	NW	NNW	WSW	W	NW	WNW	W	W	NW	NNW	NNE	NNE	NNE	NNE	NE	NE	NE	NE	NE	NE	NE	NE	NE	NE	NE	NE	NE	NNE	NNE	
25/26	7	7	6	7	7	8	7	7	6	6	6	6	7	7	8	8	7	7	7	9	9	9	9	9	9	9	9	9	9	9	9	8	7	6	6	6			
W	WNW	WNW	WNW	WNW	NW	NW	NNW	NNW	NNW	NNW	NW	NNW	WNW	W	W	NNW	NNW	SSW	NNE	NNE	NNE	NNE	NE	NE	NE	NE	NE	NE	NE	NE	NE	NE	NE	NE	NE	NE	NE	NNE	NNE
11/12	7	7	7	7	8	8	8	7	6	6	6	6	7	7	8	8	7	7	7	9	9	9	9	9	9	9	9	9	9	9	8	7	6	6	6	6			
W	WNW	WNW	WNW	WNW	NW	NW	NNW	NNW	NNW	NNW	NW	NNW	WNW	W	W	W	W	NW	WNW	NNE	NNE	NNE	NNE	NE	NE	NE	NE	NE	NE	NE	NE	NE	NE	NE	NE	NE	NE	NNE	NNE
1 & 2 Bravo	8	8	8	8	9	9	9	8	6	6	6	7	8	9	9	10	9	9	9	10	11	11	11	11	11	11	11	12	12	12	11	10	9	8	7	7			
W	WNW	WNW	WNW	WNW	NW	NW	NNW	NNW	NNW	NW	NNW	WSW	WSW	WSW	W	W	W	W	NNW	NNW	N	N	N	N	N	N	N	N	N	N	N	N	N	N	N	N	N	NNE	NNE

NOTE: This is automated data that may/may not agree with the official BAM thinking that's found on the daily slides or special visibility report slides. This data should be used as a guide only

Houston Pilots: sat. 5/20/2023



Forecast Discussion

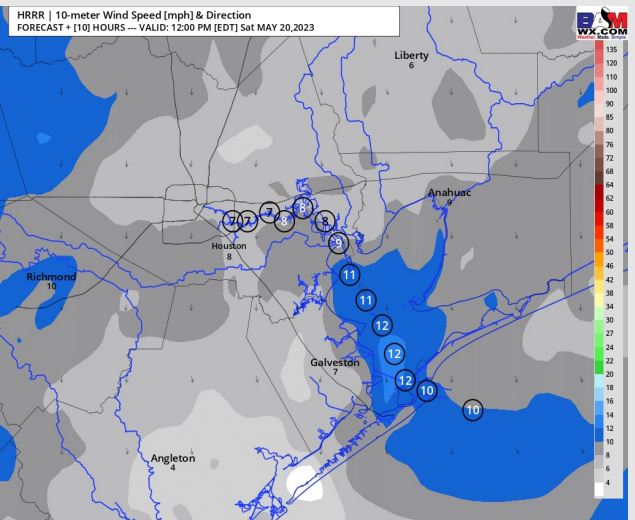
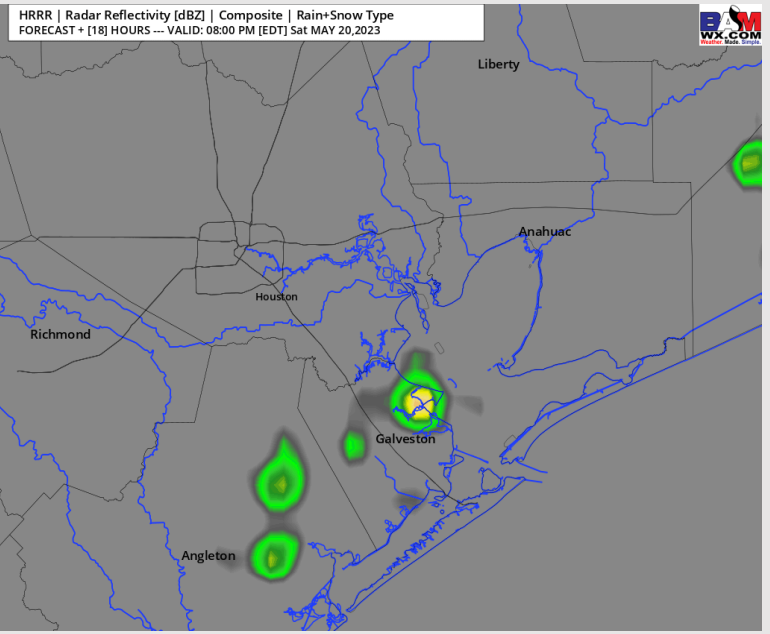
Precip: Favoring a mostly dry day for all stations, with chances for isolated, "hit/miss" showers from 5PM – 9PM. Current activity west of Houston will continue to weaken.

Wind: Expecting winds to be variable throughout the day today for stations S of Morgan's Point with speeds generally sitting within the 7 - 12 kt range with gusts up to 15 kts. Stations N of Morgan's Point can expect to see winds of 4- 8 kts throughout the day. Winds for all stations will be out of the NNW-N for the duration of today.

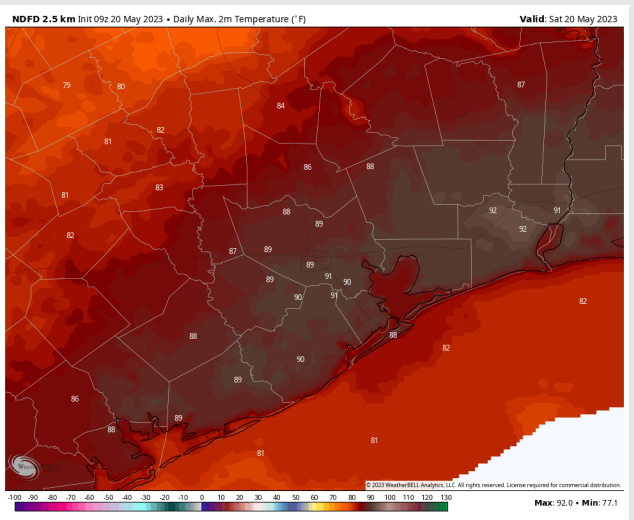
Temps: High temperatures today will be near 80 F at the Boarding Station and into the upper 80s F / lower 90s F for all other stations.

Visibility: Not anticipating any visibility concerns.

Precip Image: 7 PM CT



Wind Speed:
11 AM CT



High Temps
Today

Houston Pilots: Sun. 5/21/2023



Forecast Discussion

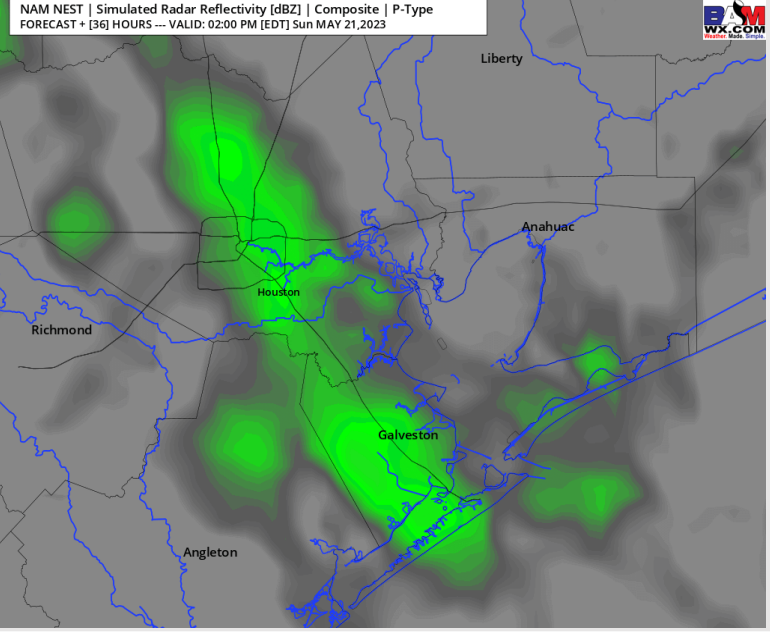
Precip: Light showers will be possible during the early afternoon hours of Sunday, with activity gradually weakening as it pushes eastward. Favoring the remainder of the PM to see dry conditions after 4PM.

Wind: Sustained winds out of the NE-ENE throughout the morning Sunday which then veer out of the NNE after the lunch timeframe. Through the AM, winds S of Morgan's Point will get up to 12 -15 kts while stations N see winds 4-8 kts. Through the PM all winds will sit in the 3 - 8 kts range.

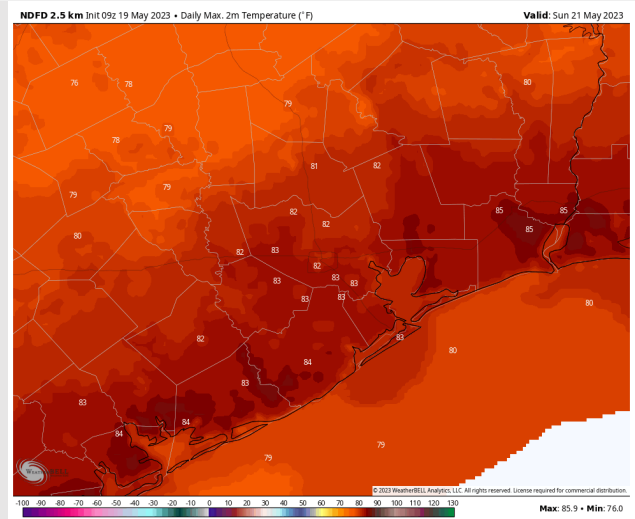
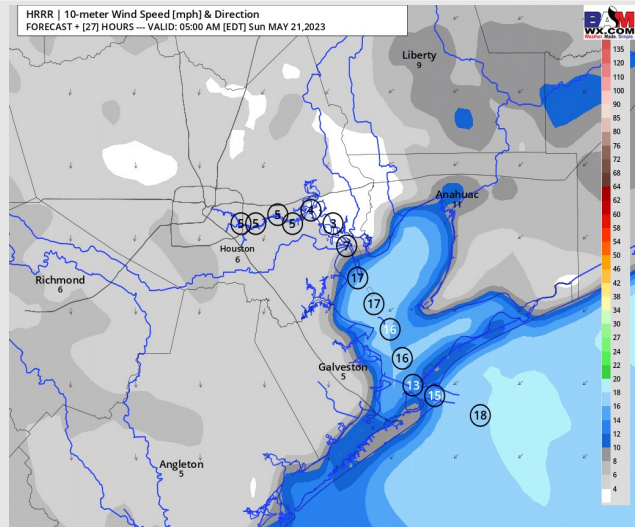
Temps: Favoring high temperatures Sunday to be in the upper 70s F for stations S of Morgan's Point and in the low to mid 80s F for stations N of Morgan's Point.

Visibility: Not anticipating visibility concerns at this time.

Precip Image: 1 PM CT



Wind Speed:
4 AM CT



High Temps
Sunday

Forecast Discussion

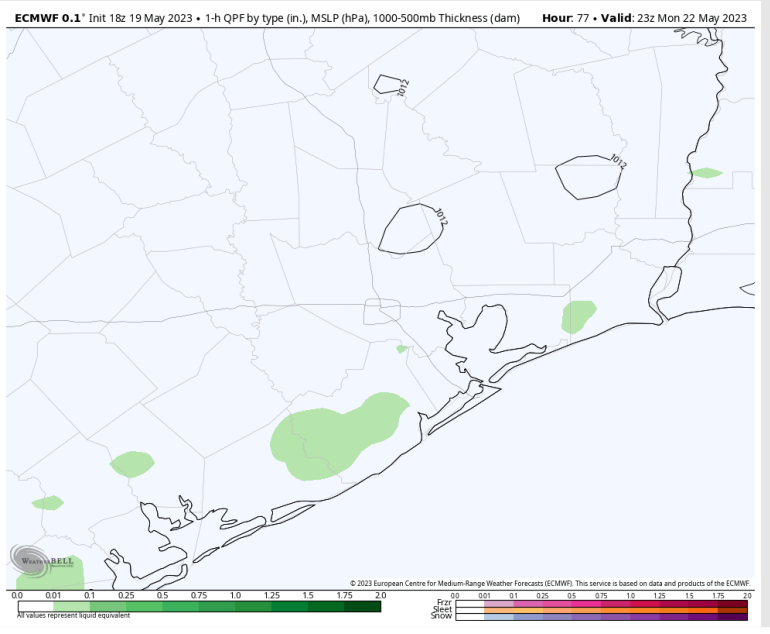
Precip: Favoring dry conditions through the morning early Monday while better chances for showers / storms stay SW of stations. After 6 PM, a few scattered showers will work through the area, then leaving dry conditions again after sunset.

Wind: Sustained winds will begin out of the NNE Monday AM at 8-13 kts. Winds will then gradually shift out of the E through the late AM before becoming variable after the lunch timeframe where all stations will see winds 1- 5 kts.

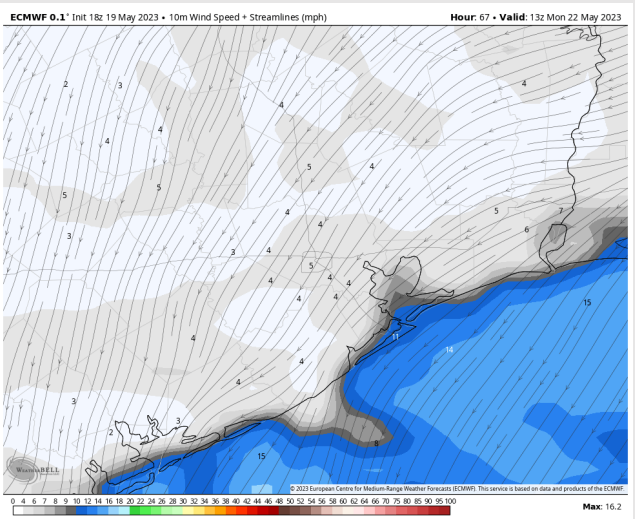
Temps: High temperatures Monday near 80s F for stations south of Morgan's Point and in the upper 80s F north of Morgan's Point.

Visibility: Not anticipating any visibility concerns at this time.

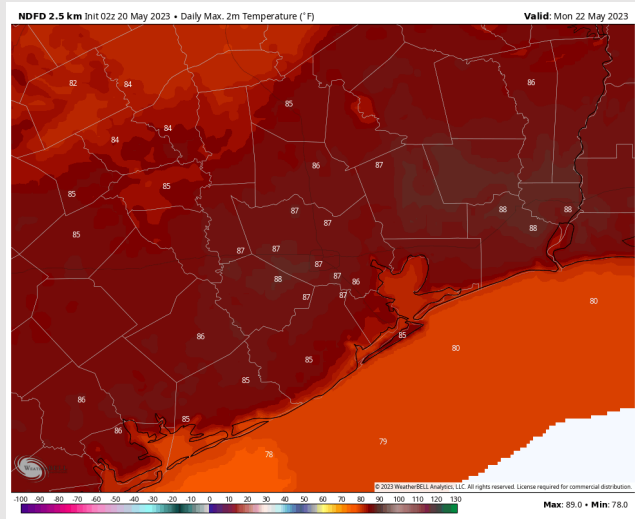
Precip Image: 6 PM CT



Wind Speed:
8 AM CT



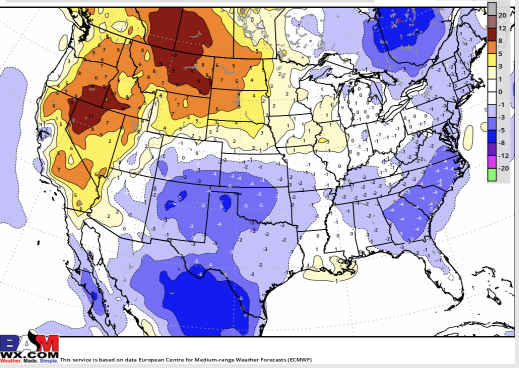
High Temps
Monday



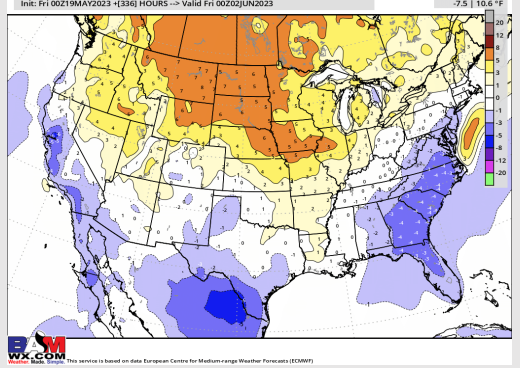
Houston Pilots: 5/20/23



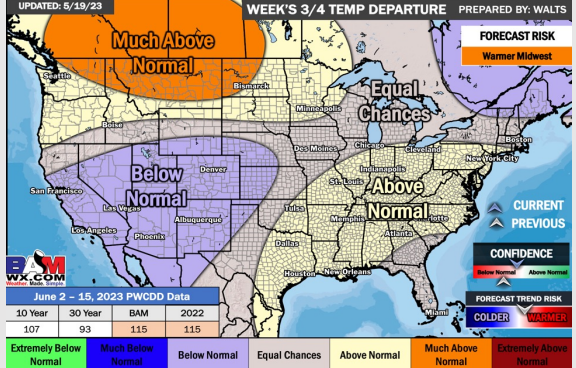
Next 7 Day Temperature Departure



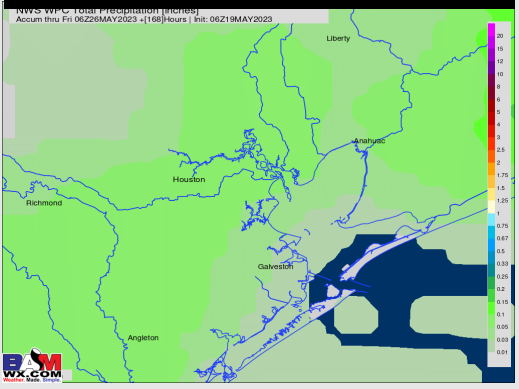
8-14 Day Temperature Departure



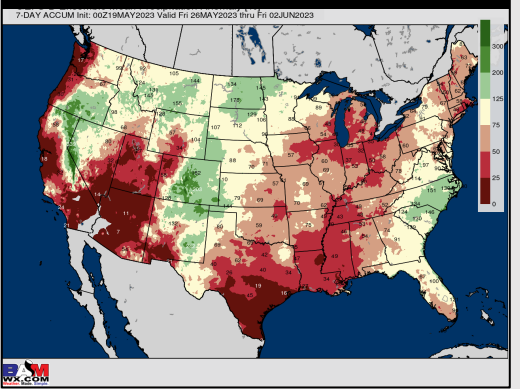
15-30 Day Temperature Departure



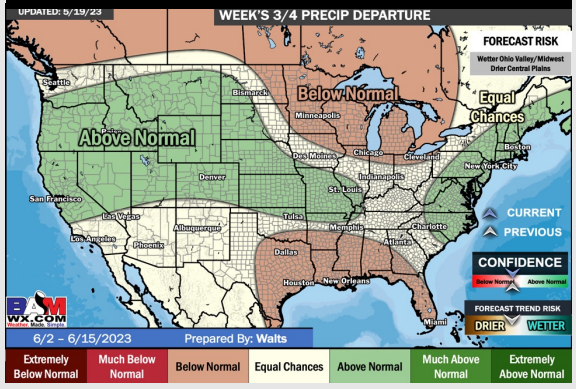
Next 7 Day Total Precipitation



8-14 Day % of Average Precip.



15-30 Day % of Average Precip.



- The next best rain chance coming early next week. A few ups and downs are expected over the next 2 weeks with primarily cooler than normal temperatures expected during this time.
- Expecting below normal precipitation chances and slightly below normal temperatures for the week 2 timeframe.
- Above normal temperatures and below normal chances for precipitation are favored in the week 3/4 timeframe.