

# Houston Pilots Forecast Package

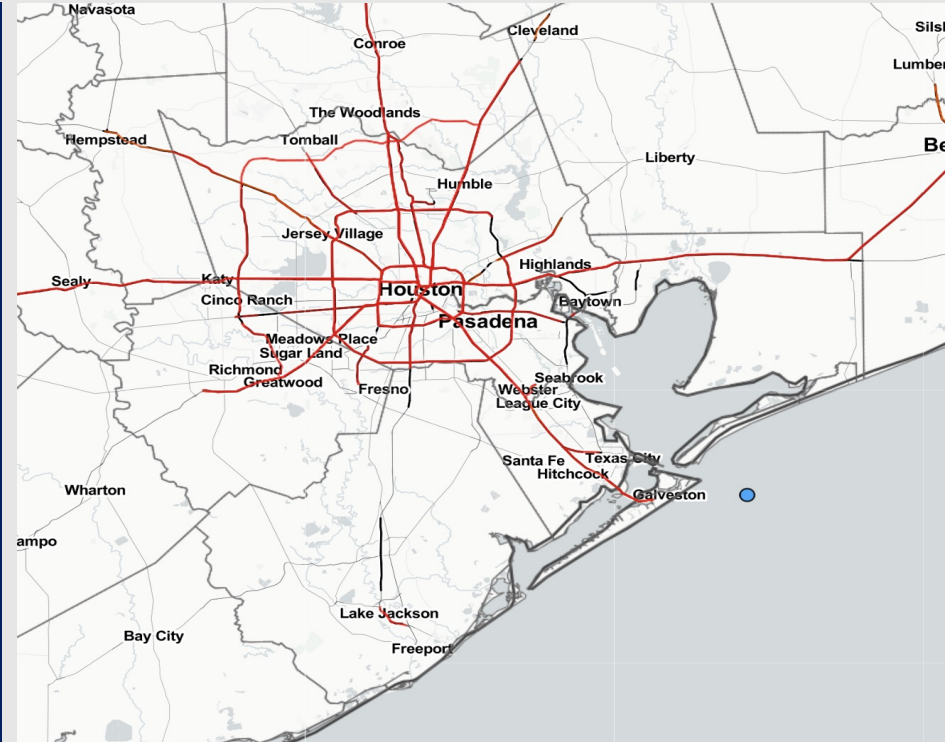


Updated: 5:50 AM CT  
Friday, May 19, 2023

Forecaster: Tyler Riggles

## Weather Headlines

- Favoring a quieter stretch for today in terms of precipitation with the next best chance for rain coming Saturday PM.
- Winds don't look very aggressive over the next few days, with winds generally staying below 15 kts.
- Not anticipating any issues with fog development over the next few days.



**Radar/NWS Alerts: 5:50 AM CT**



As always, please do not hesitate to reach out to us with any forecast questions via the chat option on the Weather Porthole or our on-call number, **(317)-560-8122** press 1 for forecast questions.

# Houston Pilots Extended Range Visibility Report



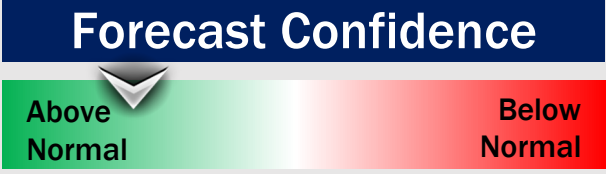
## Monday 5/22/23

Not anticipating any sea fog concerns at this time.



## Tuesday 5/23/23

No anticipating any sea fog concerns at this time.



## Wednesday 5/24/23

Radiation Fog possible west of stations Wednesday morning however not favoring any impacts / reduced visibility issues for the stations at this time.



## Chance for Reduced Visibility

Monday AM	Unlikely
Monday PM	Unlikely
Tuesday AM	Unlikely
Tuesday PM	Unlikely
Wednesday AM	Unlikely
Wednesday PM	Unlikely

# Houston Pilots Visibility Chart (miles)



## Forecast Confidence



Time	Fri 5am	Fri 6am	Fri 7am	Fri 8am	Fri 9am	Fri 10am	Fri 11am	Fri 12pm	Fri 1pm	Fri 2pm	Fri 3pm	Fri 4pm	Fri 5pm	Fri 6pm	Fri 7pm	Fri 8pm	Fri 9pm	Fri 10pm	Fri 11pm	Sat 12am	Sat 1am	Sat 2am	Sat 3am	Sat 4am	Sat 5am	Sat 6am	Sat 7am	Sat 8am	Sat 9am	Sat 10am	Sat 11am	Sat 12pm	Sat 1pm	Sat 2pm
610 Bridge	9	9	6	9	10	10	10	10	10	10	10	10	10	10	10	10	10	10	10	10	10	10	10	10	10	10	10	10	10	10	10	10	10	10
Kinder 1	9	9	6	9	10	10	10	10	10	10	10	10	10	10	10	10	10	10	10	10	10	10	10	10	10	10	10	10	10	10	10	10	10	10
Greens Bayou	10	9	6	10	10	10	10	10	10	10	10	10	10	10	10	10	10	10	10	10	10	10	10	10	10	10	10	10	10	10	10	10	10	10
Shell Crude	10	9	6	10	10	10	10	10	10	10	10	10	10	10	10	10	10	10	10	10	10	10	10	10	10	10	10	10	10	10	10	10	10	10
Lynchburg Ferries	10	9	6	10	10	10	10	10	10	10	10	10	10	10	10	10	10	10	10	10	10	10	10	10	10	10	10	10	10	10	10	10	10	10
Exxon 3	10	9	6	10	10	10	10	10	10	10	10	10	10	10	10	10	10	10	10	10	10	10	9	9	9	9	9	9	9	10	10	10	10	10
Morgans Point	10	9	6	10	10	10	10	10	10	10	10	10	10	10	10	10	10	10	10	10	10	9	9	9	9	9	9	9	10	10	10	10	10	10
75/76	10	9	6	10	10	10	10	10	10	10	10	10	10	10	10	10	10	10	10	10	10	10	9	9	9	9	9	9	10	10	10	10	10	10
63/64	10	9	6	10	10	10	10	10	10	10	10	10	10	10	10	10	10	10	10	10	10	10	9	9	9	9	9	9	10	10	10	10	10	10
51/52	10	9	7	10	10	10	10	10	10	10	10	10	10	10	10	10	10	10	10	10	10	10	10	9	9	9	9	9	10	10	10	10	10	10
37/38	10	9	7	10	10	10	10	10	10	10	10	10	10	10	10	10	10	10	10	10	10	10	10	10	9	9	9	9	10	10	10	10	10	10
25/26	10	10	8	10	10	10	10	10	10	10	10	10	10	10	10	10	10	10	10	10	10	10	10	10	10	9	9	9	9	10	10	10	10	10
11/12	10	10	8	10	10	10	10	10	10	10	10	10	10	10	10	10	10	10	10	10	10	10	10	10	10	10	10	10	10	10	10	10	10	10
1 & 2 Bravo	10	10	9	10	10	10	10	10	10	10	10	10	10	10	10	10	10	10	10	10	10	10	10	10	10	10	10	10	10	10	10	10	10	10

**NOTE: This is automated data that may/may not agree with the official BAM thinking that's found on the daily slides or special visibility report slides. This data should be used as a guide only**

# Houston Pilots Wind Chart



## Forecast Confidence



## Example

Sustained wind 13 Knots  
Gusts 18 Knots  
Wind from the N

WS: 13  
G:18  
N

Time Knots	Fri 5am	Fri 6am	Fri 7am	Fri 8am	Fri 9am	Fri 10am	Fri 11am	Fri 12pm	Fri 1pm	Fri 2pm	Fri 3pm	Fri 4pm	Fri 5pm	Fri 6pm	Fri 7pm	Fri 8pm	Fri 9pm	Fri 10pm	Fri 11pm	Sat 12am	Sat 1am	Sat 2am	Sat 3am	Sat 4am	Sat 5am	Sat 6am	Sat 7am	Sat 8am	Sat 9am	Sat 10am	Sat 11am	Sat 12pm	Sat 1pm	Sat 2pm	
610 Bridge	4	3	3	3	3	4	4	4	4	5	6	7	8	9	9	8	7	7	6	5	5	4	4	4	4	4	4	4	4	4	5	6	6	5	6
	6	6	5	5	5	5	5	5	5	7	8	9	10	11	11	12	11	11	9	8	7	7	6	7	6	6	6	6	7	7	8	8	8	8	9
Kinder 1	4	4	3	4	3	4	4	4	4	5	6	7	8	9	10	8	7	7	6	5	5	4	4	4	4	4	4	5	4	5	6	6	6	7	
	6	6	5	6	5	5	5	5	5	7	8	9	10	11	11	11	11	10	9	8	7	7	6	7	6	6	6	6	7	7	8	8	8	8	8
Greens Bayou	4	3	4	4	3	4	4	4	4	6	7	8	9	10	9	8	7	7	6	5	4	4	4	4	4	4	4	5	4	5	6	6	6	7	
	6	6	6	6	5	5	4	5	5	7	9	9	10	11	11	11	10	10	9	8	7	7	6	7	6	6	6	6	7	7	8	8	8	8	8
Shell Crude	4	4	4	4	3	4	4	4	4	6	7	8	9	10	10	8	7	7	6	5	4	4	4	5	4	4	4	5	4	5	6	6	6	7	
	6	6	6	6	5	5	4	5	5	7	9	10	10	11	11	11	10	10	9	8	7	7	7	7	7	6	6	6	7	7	8	8	8	8	8
Lynchburg Ferries	4	4	4	4	4	4	4	4	4	6	8	9	10	10	10	8	8	7	7	6	5	5	5	5	5	5	5	5	5	5	6	6	6	6	7
	6	6	6	6	5	5	4	5	5	7	9	10	11	11	12	11	11	10	9	8	7	7	7	7	7	7	7	7	7	8	8	8	8	8	9
Exxon 3	5	5	5	4	4	4	4	4	5	6	8	9	10	10	10	9	8	8	7	6	5	6	5	6	5	5	5	5	5	5	6	6	6	5	7
	7	6	7	6	6	5	5	5	6	7	9	10	12	12	13	12	11	10	10	9	8	7	7	7	8	7	7	7	7	7	8	8	8	8	8
Morgans Point	6	6	6	5	5	4	4	5	5	7	9	10	11	12	12	11	10	9	8	8	7	7	6	6	7	6	7	6	6	6	6	6	6	7	
	7	7	8	7	6	5	5	6	7	8	10	12	13	13	14	13	12	11	10	9	8	8	8	8	8	8	8	8	8	8	8	8	8	8	9
75/76	7	8	8	7	6	5	4	5	6	8	10	12	13	14	14	14	13	11	10	9	9	8	8	8	8	8	8	8	8	7	7	6	6	7	
	8	9	9	7	7	5	6	6	8	9	11	13	15	16	16	15	14	12	12	11	10	9	9	9	9	9	9	9	9	8	8	9	9	9	10
63/64	8	8	8	7	6	5	4	4	6	8	10	12	13	14	15	14	13	11	10	10	9	8	8	8	8	8	8	8	8	7	7	6	6	6	
	8	9	9	8	7	5	6	6	8	9	11	13	14	16	16	15	14	13	12	11	10	9	9	9	9	9	9	9	9	9	9	9	9	9	9
51/52	7	7	8	7	6	5	4	4	5	8	9	11	12	14	14	13	12	11	10	9	9	8	8	8	8	8	8	8	8	7	6	6	6	6	
	8	8	9	7	7	5	5	5	7	9	10	12	13	15	15	14	13	12	11	10	10	9	9	8	8	8	8	8	8	8	8	8	8	8	8
37/38	6	6	7	6	6	4	4	4	5	7	9	10	11	12	12	11	10	10	10	9	8	8	7	7	7	7	7	7	8	8	6	6	6	6	6
	7	7	8	7	7	5	5	5	7	8	10	11	12	13	13	12	12	11	11	10	10	9	8	8	8	8	7	8	8	9	9	9	8	8	8
25/26	6	6	6	6	5	4	4	4	5	7	9	10	10	10	10	10	9	9	9	8	8	7	7	6	6	6	6	7	6	6	6	6	6	7	
	7	7	7	7	6	5	5	5	6	8	9	11	11	12	12	11	10	10	10	9	9	8	8	7	7	7	7	7	8	8	8	8	8	8	8
11/12	6	6	7	6	6	5	4	4	5	7	8	9	10	10	10	9	9	9	9	8	8	7	7	7	7	7	7	7	7	6	6	6	6	6	
	7	7	7	7	6	5	5	5	6	8	9	10	11	11	11	10	10	10	10	9	8	8	8	8	8	8	8	8	8	8	8	8	8	8	8
1 & 2 Bravo	7	8	8	8	7	5	5	3	4	6	7	9	10	11	11	11	10	10	10	10	10	10	9	8	8	8	8	8	8	7	6	5	5	5	
	8	8	9	8	7	6	5	5	5	6	8	10	11	12	12	12	11	11	11	10	10	10	10	9	9	9	9	9	9	9	9	8	8	8	8
	SW	WSW	WSW	W	W	W	WSW	SW	SSW	S	S	S	S	S	S	S	S	S	S	S	S	S	S	S	S	S	S	S	S	S	S	S	S	S	

**NOTE: This is automated data that may/may not agree with the official BAM thinking that's found on the daily slides or special visibility report slides. This data should be used as a guide only**

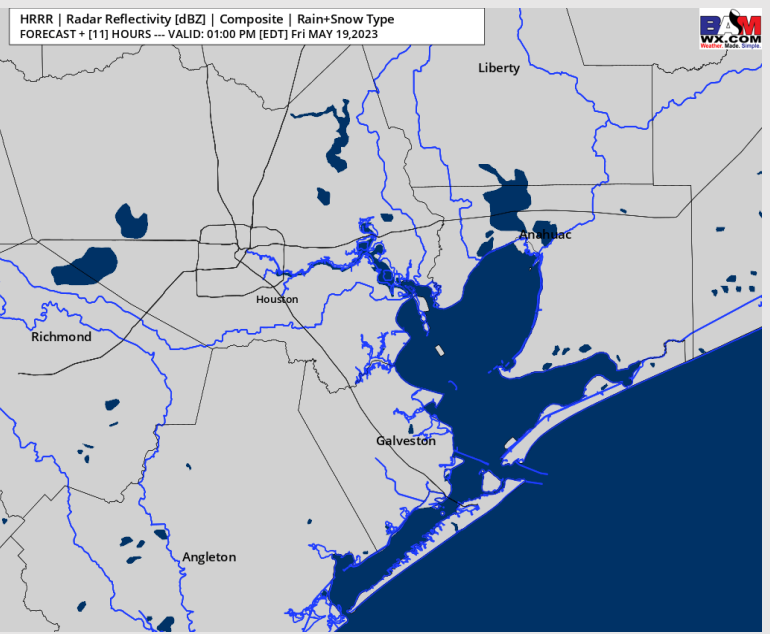
# Houston Pilots: Fri. 5/19/2023



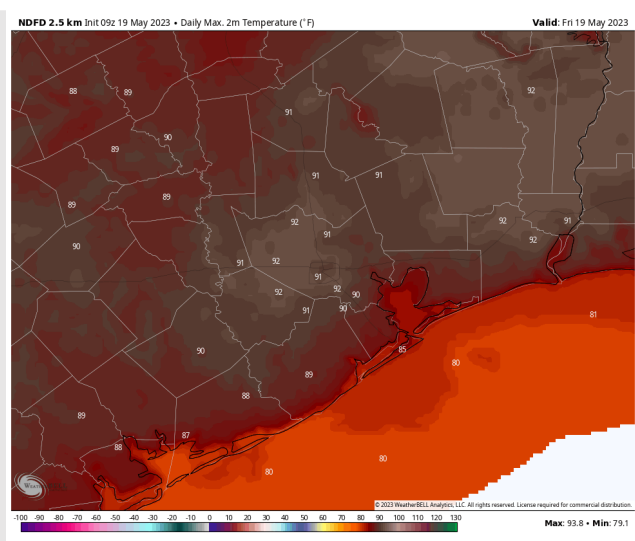
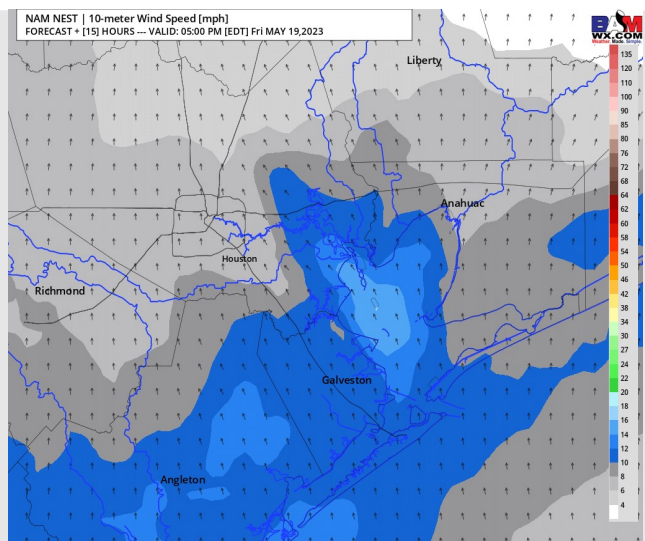
## Forecast Discussion

- Precip:** Favoring dry conditions for today.
- Wind:** Sustained winds from the SW will slowly veer from the S by 1 PM and remain from the S-SSW for the afternoon. Winds for all stations will be at 3 – 8 kts leading up to about 4 PM. Between 4 – 8 PM, all stations will see winds pick up to 10 – 15 kts.
- Temps:** High temperatures Friday will be in the upper 80s to low 90s F north of Morgan’s Point and in the mid 80s F south of Morgan’s Point. The Boarding Station will be near 80 F.
- Visibility:** Not anticipating any visibility concerns at this time.

## Precip Image: 12 PM CT



Wind Speed:  
7 PM CT



High Temps  
Today

# Houston Pilots: sat. 5/20/2023



## Forecast Discussion

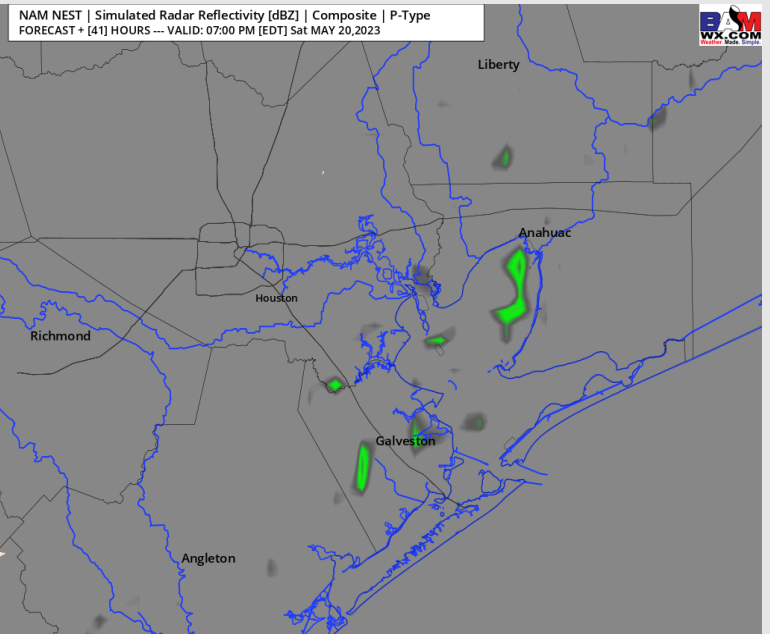
**Precip:** Favoring Saturday morning to start off dry, then after ~4-5 PM a wave of scattered showers will work in from the NW along a cold front. These chances are expected to last out through 8-9 PM.

**Wind:** Expecting winds to be variable throughout the day Saturday for stations S of Morgan's Point with speeds generally sitting within the 7-12 kt range with gusts up to 15 kts. Stations N of Morgan's Point can expect to see winds of 3-8 kts throughout the day.

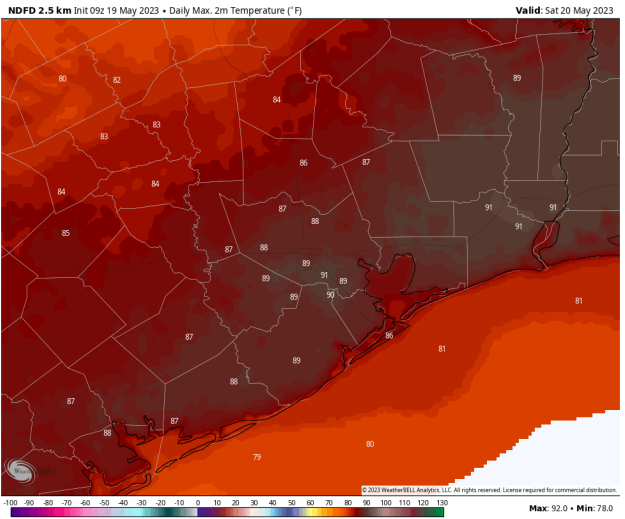
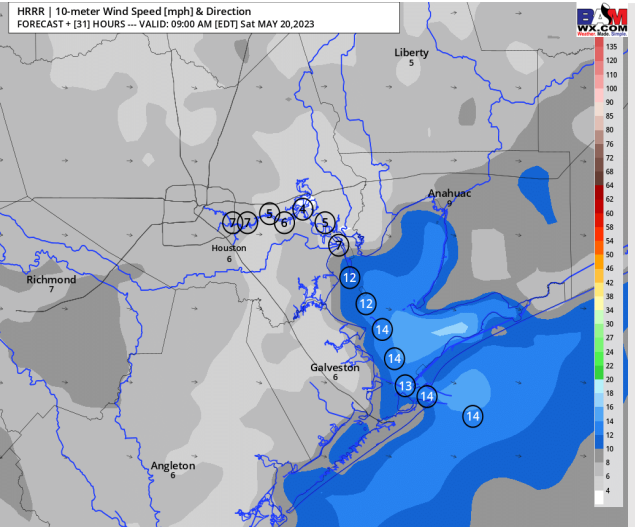
**Temps:** High temperatures Saturday will be near 80 F at the Boarding Station and into the upper 80s F / near 90 F for all other stations.

**Visibility:** Not anticipating any visibility concerns Saturday.

## Precip Image: 5 PM CT



Wind Speed:  
8 AM CT



High Temps  
Saturday

# Houston Pilots: Sun. 5/21/2023



## Forecast Discussion

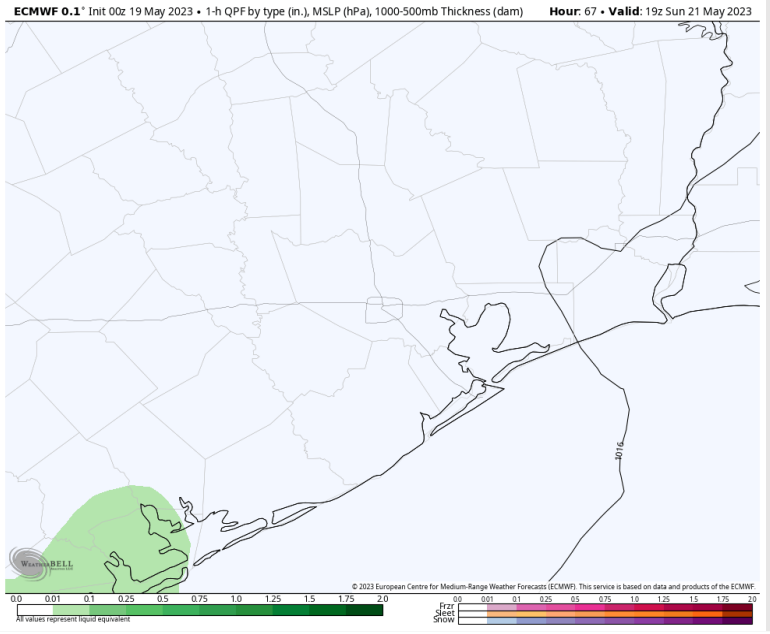
**Precip:** Favoring a dry day on Sunday, scattered showers will be present to the SW starting around 10 AM but not expecting these to impact Stations at this time.

**Wind:** Sustained winds out of the NE throughout the morning Sunday which then veer out of the N after the lunch timeframe. Through the AM, winds S of Morgan's Point will get up to 10 -15 kts while stations N see winds 3-8 kts. Through the PM all winds will sit in the 3 - 8 kts range.

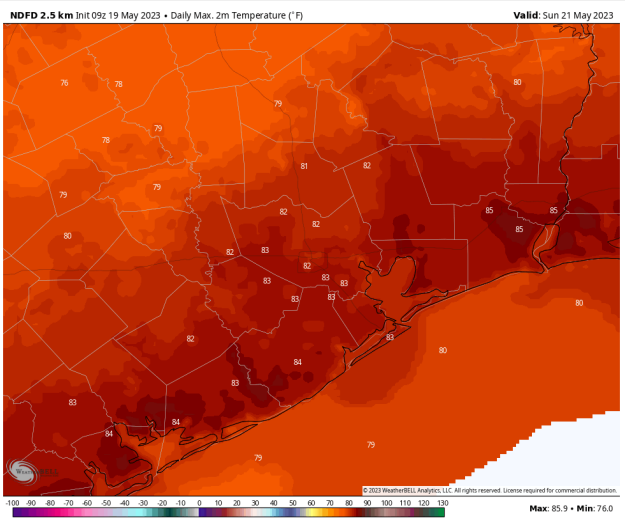
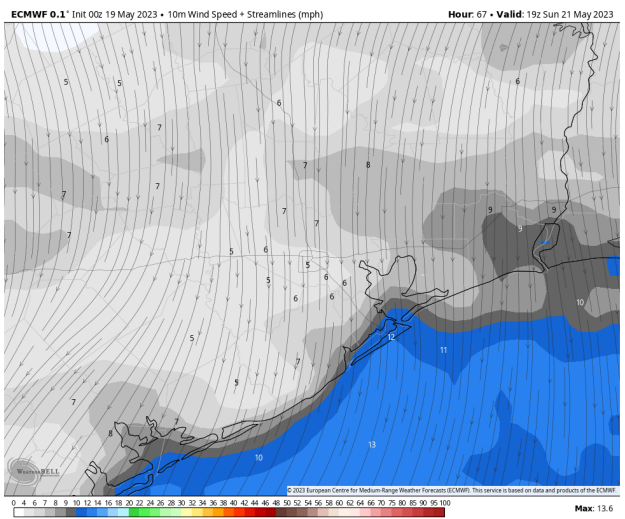
**Temps:** Favoring high temperatures Sunday to be in the upper 70s F for stations S of Morgan's Point and in the low to mid 80s F for stations N of Morgan's Point.

**Visibility:** Not anticipating visibility concerns at this time.

## Precip Image: 2 PM CT



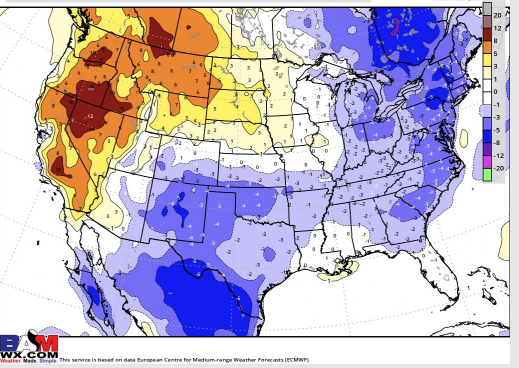
Wind Speed:  
2 PM CT



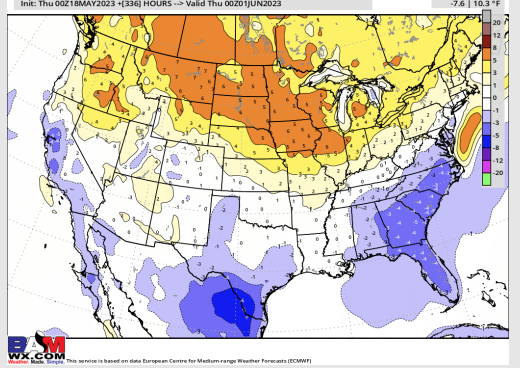
High Temps  
Sunday

# Houston Pilots: 5/19/23

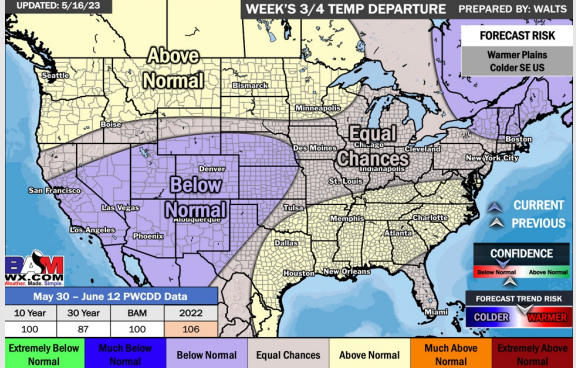
**Next 7 Day Temperature Departure**



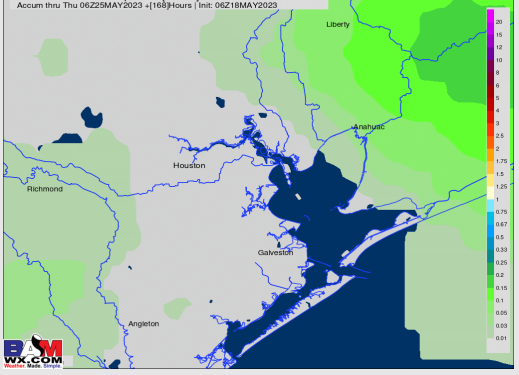
**8-14 Day Temperature Departure**



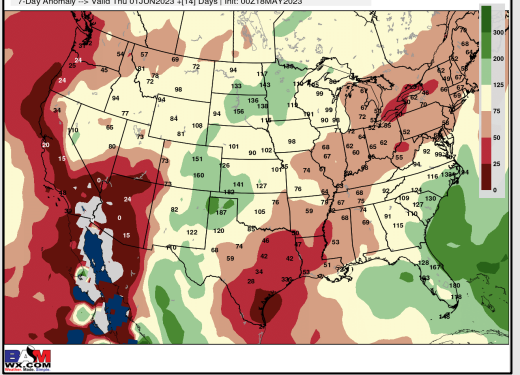
**15-30 Day Temperature Departure**



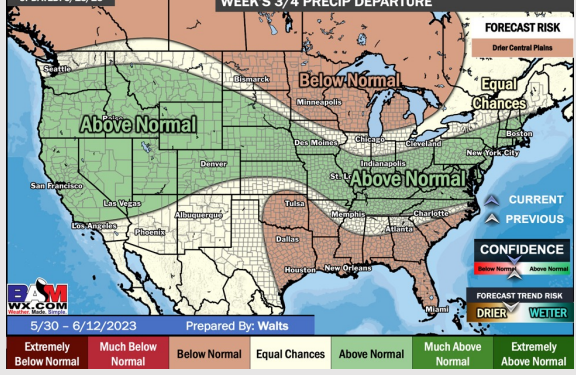
**Next 7 Day Total Precipitation**



**8-14 Day % of Average Precip.**



**15-30 Day % of Average Precip.**



- The next best rain chance coming with a front on Saturday. A few ups and downs are expected over the next 2 weeks with primarily cooler than normal temperatures expected during this time.
- Expecting below normal precipitation chances and slightly below normal temperatures for the week 2 timeframe.
- Above normal temperatures and below normal chances for precipitation are favored in the week 3/4 timeframe.