

Houston Pilots Forecast Package

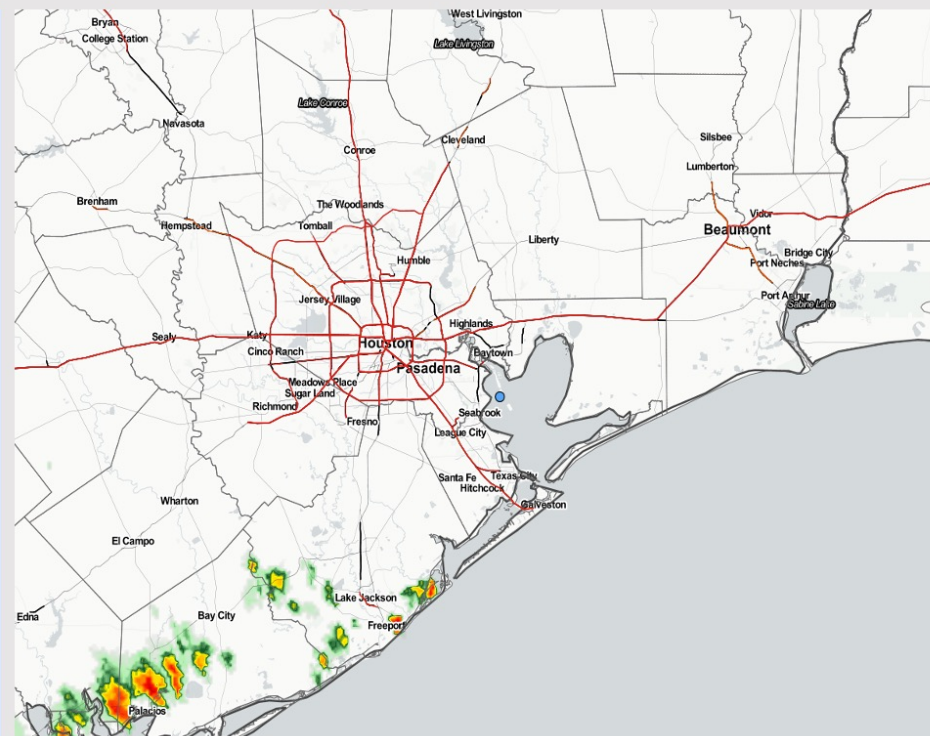


Updated: 1:00 PM CT
Tuesday, May 16, 2023

Forecaster: Josh Collins

Weather Headlines

- Scattered showers and storms will still be possible through THU AM .
- Sustained winds will look to be calm over the next few days, with winds staying below 13 kts.
- A few stronger wind gusts will be possible, however, under stronger cells this afternoon and WED PM
- Favoring a quieter stretch for the Thursday PM/Friday timeframe in terms of precipitation with the next best chance for rain coming Saturday PM.



Radar/NWS Alerts: 12:45 PM CT



As always, please do not hesitate to reach out to us with any forecast questions via the chat option on the Weather Porthole or our on-call number, **(317)-560-8122** press 1 for forecast questions.

Houston Pilots Extended Range Visibility Report



Friday 5/19/23

Not anticipating any sea fog concerns at this time.

Forecast Confidence



Sunday 5/21/23

Not anticipating sea any fog concerns at this time.

Forecast Confidence



Saturday 5/20/23

No anticipating any sea fog concerns at this time.

Forecast Confidence



Chance for Reduced Visibility	
Friday AM	Unlikely
Friday PM	Unlikely
Saturday AM	Unlikely
Saturday PM	Unlikely
Sunday AM	Unlikely
Sunday PM	Unlikely

Houston Pilots Visibility Chart (miles)



Forecast Confidence



Time	Tue 12pm	Tue 1pm	Tue 2pm	Tue 3pm	Tue 4pm	Tue 5pm	Tue 6pm	Tue 7pm	Tue 8pm	Tue 9pm	Tue 10pm	Tue 11pm	Wed 12am	Wed 1am	Wed 2am	Wed 3am	Wed 4am	Wed 5am	Wed 6am	Wed 7am	Wed 8am	Wed 9am	Wed 10am	Wed 11am	Wed 12pm	Wed 1pm	Wed 2pm	Wed 3pm	Wed 4pm	Wed 5pm	Wed 6pm	Wed 7pm	Wed 8pm
610 Bridge	10	10	10	10	10	10	10	10	10	10	10	10	10	10	10	8	9	8	9	7	10	10	10	10	10	10	10	10	10	10	10	10	10
Kinder 1	10	10	10	10	10	10	10	10	10	10	10	10	10	10	10	8	9	9	9	7	10	10	10	10	10	10	10	10	10	10	10	10	10
Greens Bayou	10	10	10	10	10	10	10	10	10	10	10	10	10	10	10	8	9	9	9	8	10	10	10	10	10	10	10	10	10	10	10	10	10
Shell Crude	10	10	10	10	10	10	10	10	10	10	10	10	10	10	10	8	9	9	9	8	10	10	10	10	10	10	10	10	10	10	10	10	10
Lynchburg Ferries	10	10	10	10	10	10	10	10	10	10	10	10	10	10	10	8	9	9	9	8	10	10	10	10	10	10	10	10	10	10	10	10	10
Exxon 3	10	10	10	10	10	10	10	10	10	10	10	10	10	9	9	8	9	9	9	8	9	9	10	10	10	10	10	10	10	10	10	10	10
Morgans Point	10	10	10	10	10	10	10	10	10	10	10	10	10	9	9	8	9	9	9	8	9	9	10	10	10	10	10	10	10	10	10	10	10
75/76	10	10	10	10	10	10	10	10	10	10	10	10	10	9	9	8	9	9	9	8	9	9	10	10	10	10	10	10	10	10	10	10	10
63/64	10	10	10	10	10	10	10	10	10	10	10	10	10	9	9	9	9	9	9	8	9	9	10	10	10	10	10	10	10	10	10	10	10
51/52	10	10	10	10	10	10	10	10	10	10	10	10	10	9	9	9	9	9	9	8	9	9	9	10	10	10	10	10	10	10	10	10	10
37/38	10	10	10	10	10	10	10	10	10	10	10	10	10	9	9	9	9	9	9	9	9	9	9	10	10	10	10	10	10	10	10	10	10
25/26	10	10	10	10	10	10	10	10	10	10	10	10	10	9	9	9	9	9	9	9	9	9	9	10	10	10	10	10	10	10	10	10	10
11/12	10	10	10	10	10	10	10	10	10	10	10	10	10	9	9	9	9	9	9	9	9	9	10	10	10	10	10	10	10	10	10	10	10
1 & 2 Bravo	10	10	10	10	10	10	10	10	10	10	10	10	10	9	9	9	9	9	9	9	10	10	10	10	10	10	10	10	10	10	10	10	10

NOTE: This is automated data that may/may not agree with the official BAM thinking that's found on the daily slides or special visibility report slides. This data should be used as a guide only

Houston Pilots Wind Chart



Sustained wind 13 Knots

Gusts 18 Knots

Wind from the N

Example

WS: 13

G:18

N

Time Knots	Tue 12pm	Tue 1pm	Tue 2pm	Tue 3pm	Tue 4pm	Tue 5pm	Tue 6pm	Tue 7pm	Tue 8pm	Tue 9pm	Tue 10pm	Tue 11pm	Wed 12am	Wed 1am	Wed 2am	Wed 3am	Wed 4am	Wed 5am	Wed 6am	Wed 7am	Wed 8am	Wed 9am	Wed 10am	Wed 11am	Wed 12pm	Wed 1pm	Wed 2pm	Wed 3pm	Wed 4pm	Wed 5pm	Wed 6pm	Wed 7pm	Wed 8pm
610 Bridge	5	5	6	6	7	7	7	6	5	4	3	3	3	4	4	4	5	4	4	4	4	5	6	6	6	6	6	6	7	6	6	5	4
	7	7	9	10	10	11	10	7	6	6	5	6	6	6	6	6	6	7	6	6	6	5	7	8	8	9	9	10	10	9	9	7	5
	WNW	WNW	WNW	WNW	W	SW	WSW	W	WNW	W	W	W	W	W	W	WNW	WNW	WNW	WNW	WNW	WNW	NW	NW	NW	NW	NW	NW	NW	NNW	NNW	NNW	NNW	NNW
Kinder 1	5	5	6	6	7	7	7	6	5	4	3	3	3	4	4	4	5	4	4	4	4	4	5	6	6	6	6	7	7	7	6	5	3
	7	7	8	10	10	11	10	8	6	6	5	6	6	6	6	6	7	6	6	6	6	5	7	7	8	9	9	10	10	9	9	5	3
	NW	NW	WNW	WNW	W	SW	WSW	W	W	W	W	W	W	W	W	WNW	WNW	WNW	WNW	WNW	WNW	NW	NW	NW	NW	NNW	NW	NNW	NNW	NNW	NNW	NNW	NNW
Greens Bayou	5	5	6	6	7	7	7	6	4	4	3	3	4	4	4	4	5	4	4	4	4	4	5	6	6	6	6	7	7	7	6	5	3
	7	8	8	9	10	11	10	8	7	6	5	5	6	7	7	7	6	7	6	6	6	6	7	7	8	9	9	10	10	9	9	8	5
	NW	NW	WNW	WNW	W	SW	WSW	W	W	W	W	W	W	W	W	WNW	WNW	WNW	WNW	WNW	WNW	NW	NW	NW	NW	NNW	NNW	NNW	NNW	NNW	NNW	NNW	NNW
Shell Crude	5	5	6	7	7	7	7	6	5	4	4	4	4	4	4	4	5	4	4	4	4	4	5	6	6	6	6	7	7	7	6	5	4
	7	8	8	9	10	11	9	8	7	7	5	5	6	7	7	7	7	7	6	6	6	6	7	7	8	9	9	10	10	9	9	8	5
	WNW	NW	WNW	WNW	W	WSW	WSW	W	W	W	W	W	W	W	W	WNW	WNW	WNW	WNW	WNW	WNW	NW	NW	NW	NW	NNW	NNW	NNW	NNW	NNW	NNW	NNW	NNW
Lynchburg Ferries	5	5	6	7	7	8	7	6	5	5	4	4	4	5	5	5	5	5	5	5	5	5	6	6	6	6	6	7	7	8	7	6	4
	7	8	8	9	10	12	10	8	7	7	6	6	6	7	7	7	7	8	7	7	7	6	6	7	7	8	9	9	10	9	9	8	6
	WNW	WNW	WNW	WNW	WNW	WSW	WSW	W	W	W	W	W	W	W	WNW	WNW	WNW	WNW	WNW	WNW	NW	NW	NW	NW	NW	NW	NW	NNW	NNW	NNW	NNW	NNW	NNW
Exxon 3	5	5	6	6	7	8	7	7	6	5	5	5	5	5	6	5	6	5	5	5	5	5	6	6	6	6	6	7	7	7	7	6	5
	7	8	8	9	9	12	10	9	8	7	6	7	7	7	8	7	8	7	7	7	7	7	7	7	8	9	9	10	10	9	9	8	6
	WNW	NW	WNW	W	W	WSW	WSW	W	W	W	W	W	W	W	WNW	WNW	WNW	WNW	WNW	NW	NW	NW	NW	NW	NW	NW	NW	NW	NNW	NNW	NNW	NNW	NNW
Morgans Point	5	5	6	7	8	9	8	8	7	7	6	6	6	6	7	6	7	7	6	7	6	6	6	6	6	6	6	7	7	7	7	6	
	7	8	8	9	10	12	10	10	9	8	7	7	7	8	8	8	9	8	8	8	7	7	8	8	8	9	9	10	10	9	9	7	7
	NW	NW	WNW	W	WSW	WSW	WSW	W	W	W	W	W	W	W	WNW	WNW	WNW	WNW	WNW	NW	NW	NW	NW	NW	NW	NW	NW	NW	NW	NW	NW	NW	W
75/76	6	5	6	8	9	11	10	10	9	9	8	7	7	8	8	8	9	8	8	9	8	7	7	6	6	6	6	7	7	8	8	8	7
	8	8	9	9	11	12	12	11	10	10	10	9	8	8	9	9	10	9	9	9	9	8	8	8	8	9	10	10	11	11	10	9	8
	NW	NW	WSW	W	SW	W	WSW	WSW	W	W	W	W	W	W	W	WNW	WNW	WNW	WNW	WNW	NW	NW	NW	NW	NW	NW	NW	W	W	W	WSW	WSW	SW
63/64	5	5	5	7	9	11	11	10	9	9	8	7	7	9	8	9	9	9	9	9	9	8	7	7	5	6	6	7	7	8	8	8	7
	8	8	8	9	11	12	12	11	10	9	9	8	8	9	9	10	10	10	10	10	9	9	8	8	8	8	9	10	11	10	9	9	8
	NW	WNW	SW	WSW	SW	WSW	WSW	WSW	W	W	W	W	W	W	W	WNW	WNW	WNW	WNW	WNW	NW	WNW	NW	NW	NW	NW	NW	W	WSW	SW	SW	SW	SW
51/52	5	5	5	6	8	11	11	9	8	8	8	8	7	8	8	9	9	9	9	9	9	7	7	5	5	6	7	7	7	7	8	6	
	7	7	7	8	11	12	12	10	9	9	9	8	8	9	9	10	9	10	9	10	9	9	8	7	8	7	10	10	10	9	8	7	
	NW	NW	WSW	SW	SW	WSW	W	WSW	W	W	W	W	W	W	W	WNW	WNW	WNW	WNW	WNW	NW	NW	NW	NW	NW	NW	NW	WSW	SW	SW	SW	SW	SW
37/38	5	5	5	5	8	11	10	9	7	7	7	8	7	8	8	8	8	8	8	8	8	7	7	6	5	6	7	7	7	7	8	7	6
	7	7	7	8	10	12	11	9	8	8	8	8	8	9	9	9	9	9	9	9	8	8	8	8	8	8	8	9	9	8	8	6	
	NW	WNW	W	SW	SW	WSW	W	W	W	W	W	W	W	W	W	WNW	WNW	WNW	WNW	WNW	NW	NW	NW	NW	NW	NW	NW	WSW	SW	SW	SW	SW	SW
25/26	5	5	5	6	8	10	9	8	7	7	7	7	7	7	8	8	8	7	7	7	7	7	6	6	6	6	6	7	7	7	7	7	5
	7	7	7	8	10	11	10	9	7	7	7	7	8	8	8	8	8	8	8	8	8	8	7	8	8	8	8	9	9	8	8	6	
	NW	NW	W	SSW	SW	WSW	W	W	W	W	W	W	W	W	W	WNW	WNW	WNW	WNW	WNW	NW	NW	NW	NW	NW	NW	NW	WSW	SW	SW	SW	SW	SW
11/12	5	5	5	6	8	10	9	8	7	7	7	7	7	8	8	8	8	8	8	8	8	8	7	6	6	6	7	7	7	7	7	7	6
	7	6	7	8	10	11	10	9	8	8	8	8	8	8	9	9	9	9	9	9	9	8	8	8	8	8	8	9	9	8	8	7	
	NW	WNW	WSW	SSW	SW	WSW	W	W	W	W	W	W	W	W	W	WNW	WNW	WNW	WNW	WNW	NW	NW	NW	NW	NW	NW	NW	WSW	WSW	SW	SW	SW	SW
1 & 2 Bravo	6	5	5	6	9	11	11	10	9	9	9	9	9	9	9	10	9	9	9	9	10	9	8	7	6	6	7	8	8	8	9	9	9
	7	7	7	8	10	12	12	11	10	10	10	10	10	10	10	10	10	10	10	10	10	10	9	9	8	8	8	9	9	10	10	9	9
	WNW	WNW	WSW	SW	SW	WSW	W	W	W	W	W	W	W	W	W	W	WNW	WNW	WNW	WNW	WNW	NW	NW	NW	WNW	WNW	WSW	SW	SW	SW	SW	SW	SW

NOTE: This is automated data that may/may not agree with the official BAM thinking that's found on the daily slides or special visibility report slides. This data should be used as a guide only

Houston Pilots: Tue. 5/16/2023

Forecast Discussion

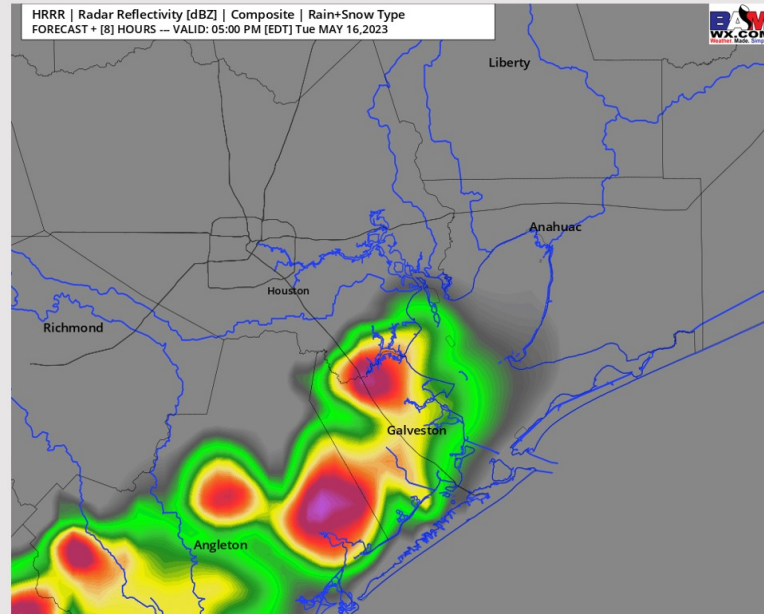
Precip: Favoring dry conditions to continue through 3 PM, after 3 PM favoring a 30-40% for scattered showers/thunderstorms for the area through 8 PM local time. Wind gusts of 30-40 MPH and brief bouts of small hail will be possible under the strongest cells during this time. After 8 PM, favoring coverage to taper off through the rest of the night.

Wind: As we head into the afternoon, winds N of Stations 63/64 will generally be out of the NNW while winds S of Stations 63/64 will shift to out of the SSW for the rest of the day. However, we will need to watch the 3-8 PM timeframe for winds to be more variable as scattered showers/thunderstorms form in the area. Winds N of Morgan's Point will generally be in the 3-7 kts for the rest of the day, while winds S of Morgan's Point will generally be 6-13 kts throughout the rest of the evening. Stronger wind gusts will be possible under stronger storms as mentioned above.

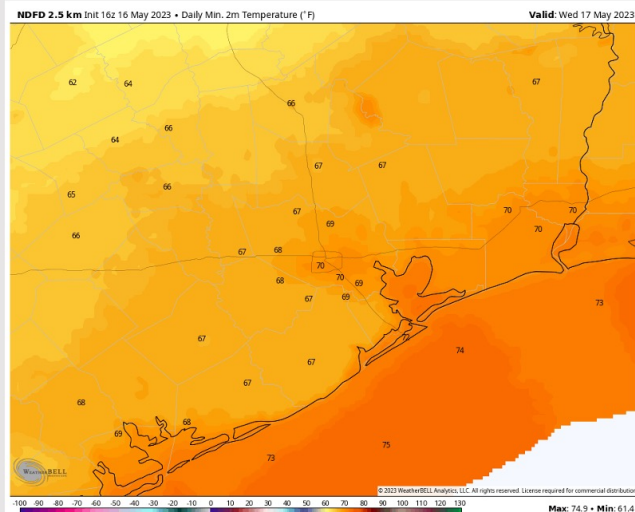
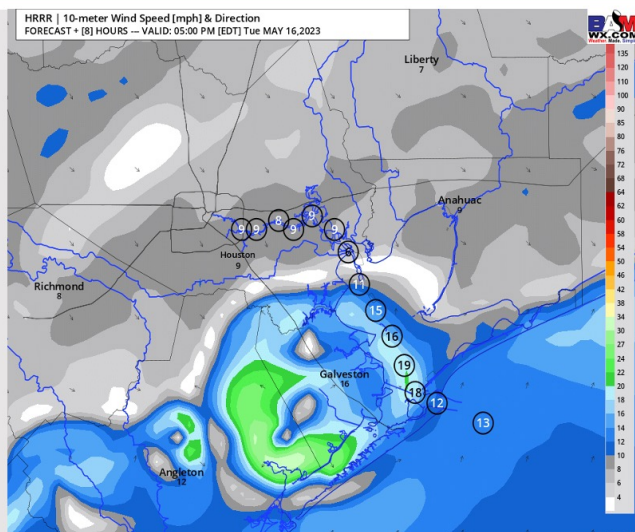
Temps: Low temperatures Wednesday AM will be in the low 70s F across all stations S of Morgan's Point, and near 70 F across all stations N of Morgan's Point.

Visibility: No visibility risks due to fog expected at this time; however, visibility could be reduced under locally stronger storm cells.

Precip Image: 4 PM CT



Wind Speed:
4 PM CT



Low Temps
WED AM

Houston Pilots: Wed. 5/17/2023

Forecast Discussion

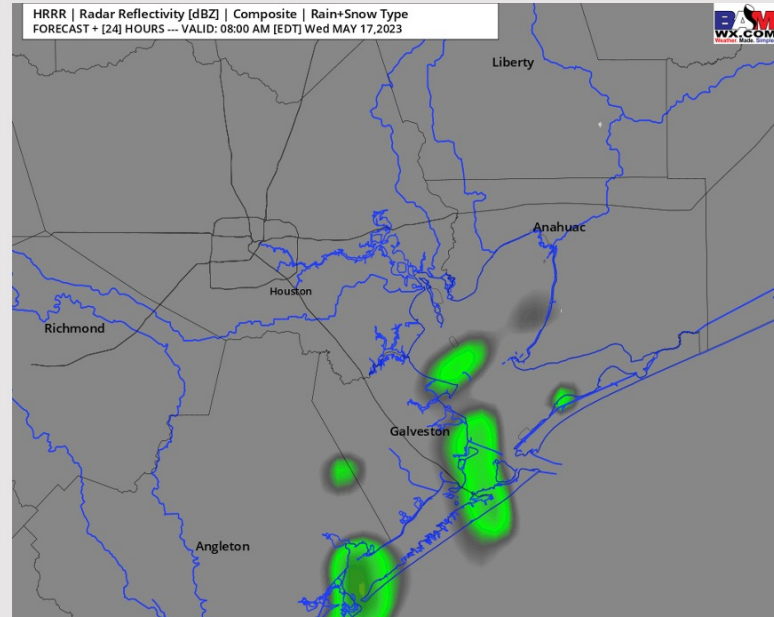
Precip: A few scattered light showers/drizzle possible throughout Wednesday morning with the best coverage being for stations S of Morgan's Point during the 6 AM – 11 AM timeframe. During the afternoon hours, rain/storm chances will become more isolated throughout the area at 10-20%, with a low-end risk at a strong/severe storm possible.

Wind: Winds will start out of the W/NW through 3 PM on Wednesday, when they will become more variable. They will then shift out of the S/SW after 6 PM and continue throughout the rest of the evening. Winds N of Morgan's Point will be at 2-7 kts throughout the entire day. Winds will start off at 5-10 kts S of Morgan's Point before decreasing to 2-7 kts around 9 AM through 5 PM. After 5 PM, winds will increase to 8-13 kts throughout the rest of the evening for stations S of Morgan's Point.

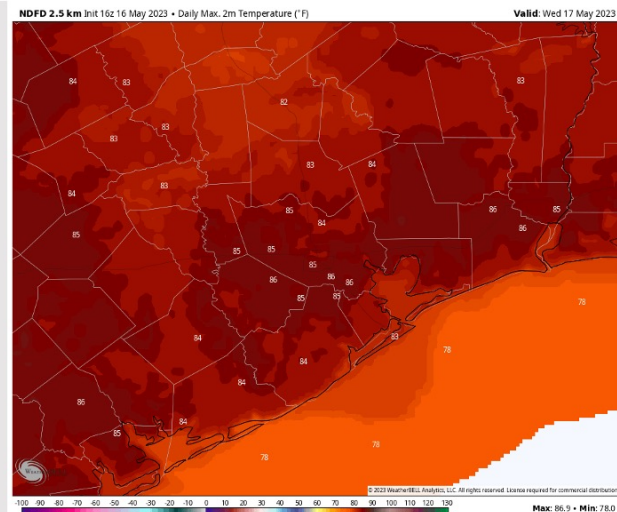
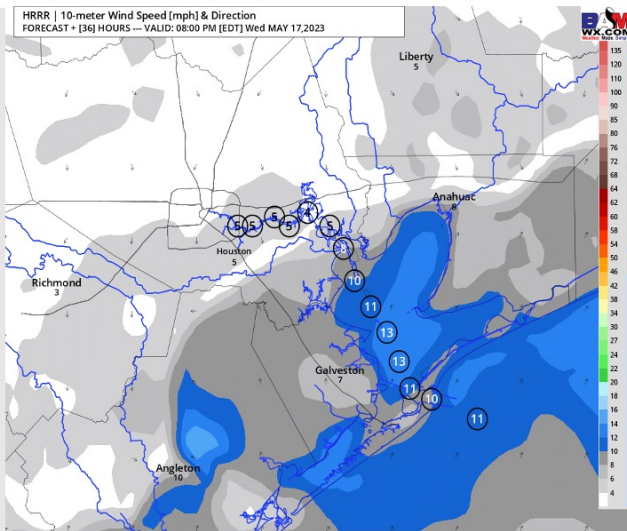
Temps: High temperatures on Wednesday will be in the upper 70s F near the boarding station and mid 80s F at all other stations.

Visibility: Not anticipating any visibility concerns Wednesday.

Precip Image: 7 AM CT



Wind Speed:
7 PM CT



High Temps
Wednesday

Houston Pilots: Thu. 5/18/2023

Forecast Discussion

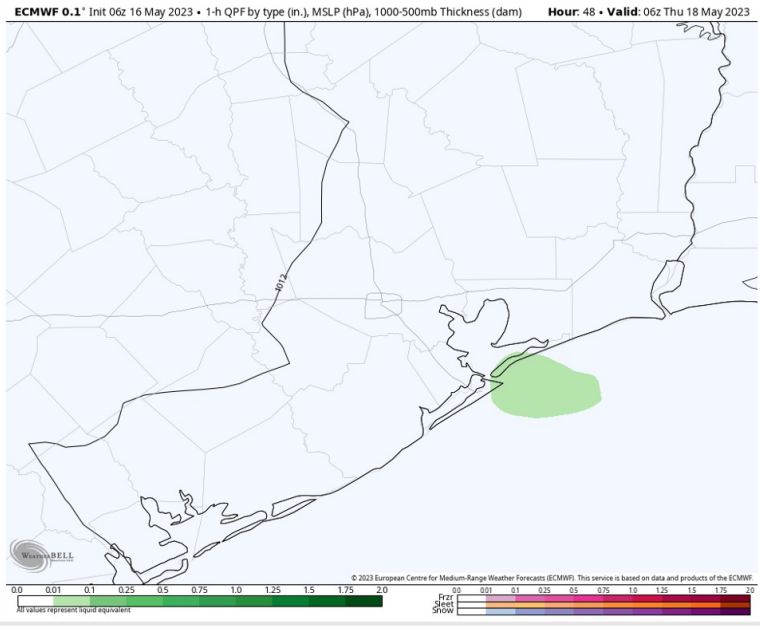
Precip: Favoring a very low-end chance for an isolated shower during the early morning hours on Thursday. Then, favoring dry conditions for the rest of the day.

Wind: NW winds during the early AM hours will slowly veer from NW to SE from 7 AM - 4 PM and from 4 PM through the rest of the day, favor a more S/SSW direction. Winds across all stations will start at 2 – 7 kts and increase to 6 – 11 kts south of Morgan’s Point by 8 PM.

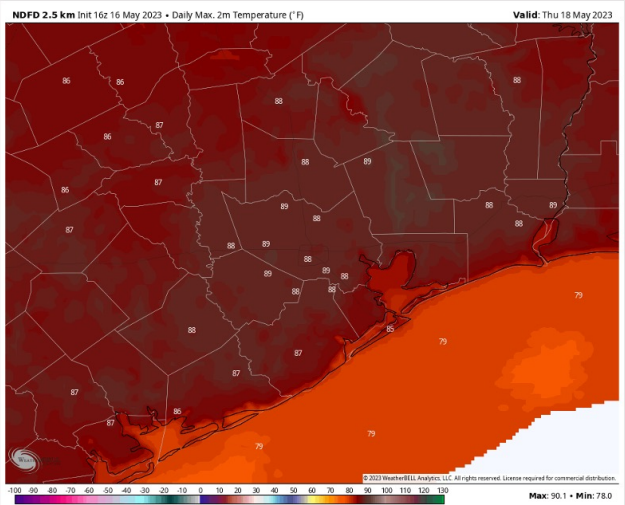
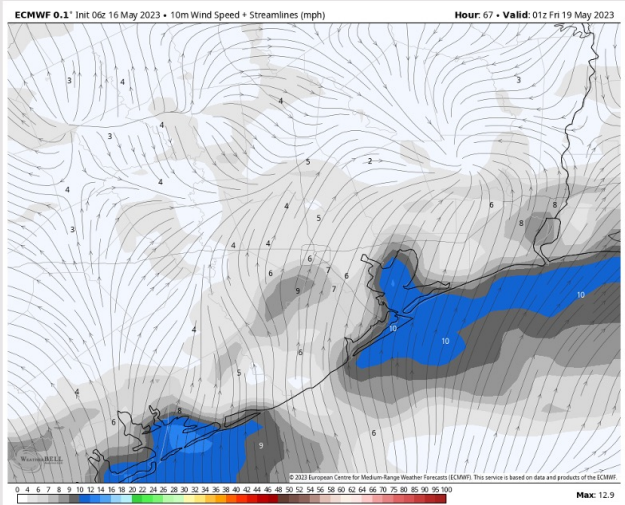
Temps: High temperatures Thursday will be in the mid to upper 80s F across all stations aside from the Boarding Station where they will be in the upper 70s F.

Visibility: Not anticipating any visibility concerns at this time.

Precip Image: 1 AM CT



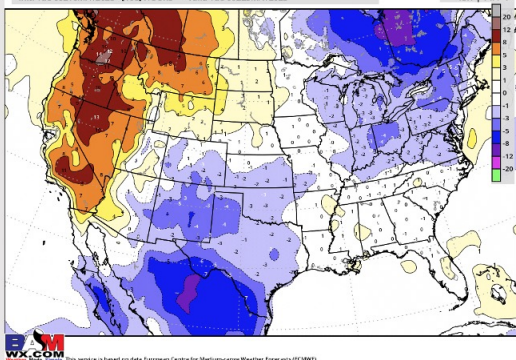
Wind Speed:
8 PM CT



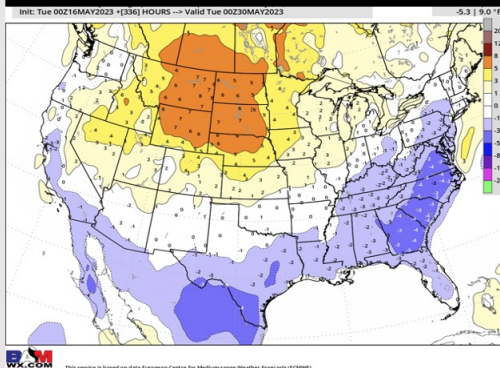
High Temps
Thursday

Houston Pilots: 5/16/23

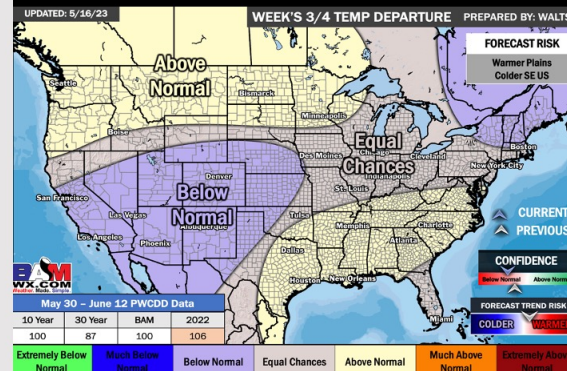
Next 7 Day Temperature Departure



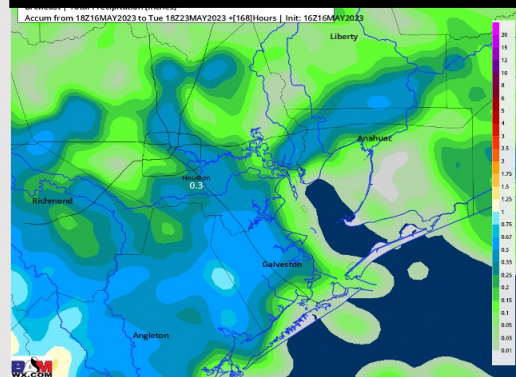
8-14 Day Temperature Departure



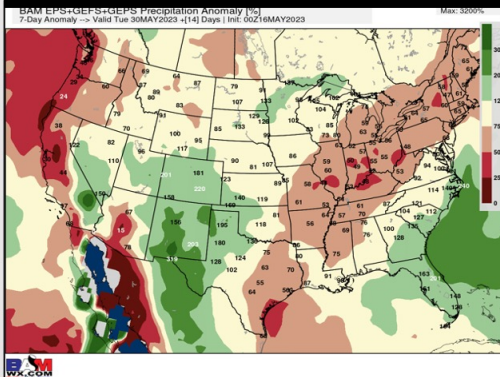
15-30 Day Temperature Departure



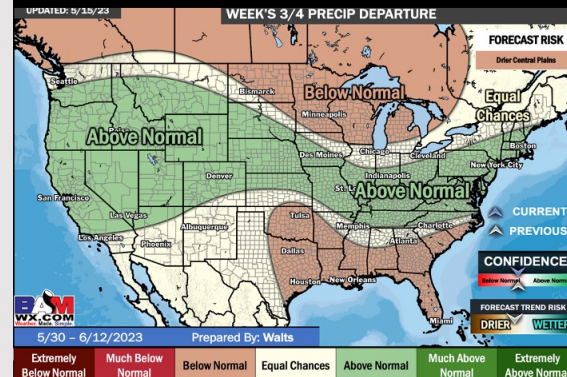
Next 7 Day Total Precipitation



8-14 Day % of Average Precip.



15-30 Day % of Average Precip.



- Rain chances expected to continue through WED with the next best chance coming with a front on Saturday. A few ups and downs are expected over the next 2 weeks with primarily cooler than normal temperatures expected during this time.
- Expecting below normal precipitation chances and below normal temperatures for the week 2 timeframe.
- Above normal temperatures and below normal chances for precipitation are favored in the week 3/4 timeframe.