

Houston Pilots Forecast Package

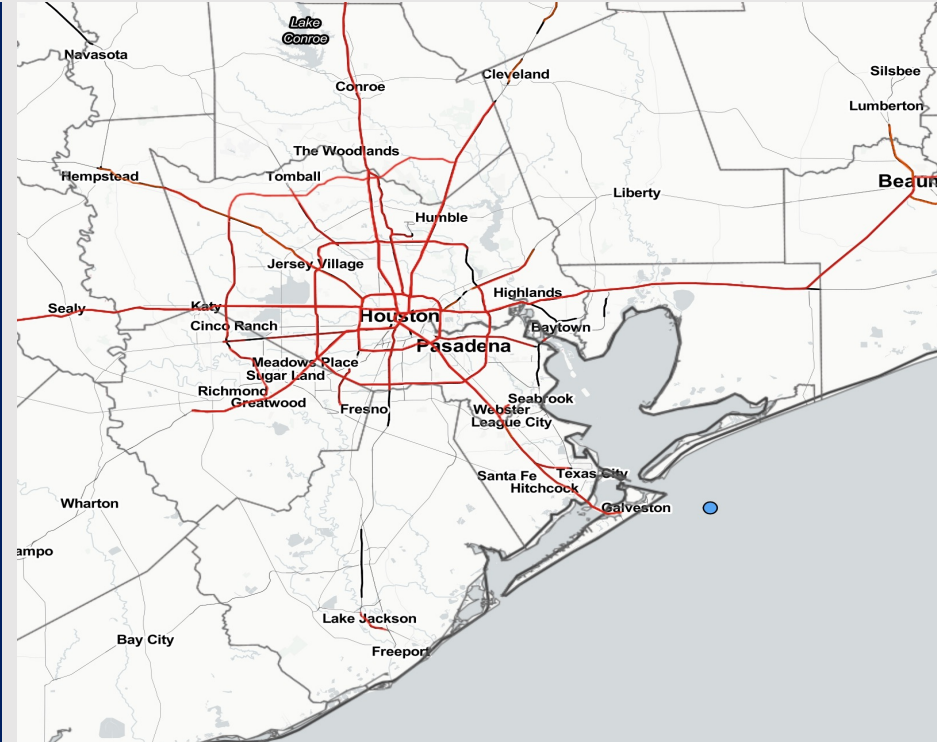


Updated: 6:15 AM CT
Tuesday, May 16, 2023

Forecaster: Tyler Riggles

Weather Headlines

- Scattered showers and storms will be possible for today and into Wednesday.
- Winds don't look very aggressive over the next few days, with winds generally staying below 12 kts.
- Favoring a quieter stretch for the Thursday/Friday timeframe in terms of precipitation with the next best chance for rain coming Saturday PM.



Radar/NWS Alerts: 6:15 AM CT



As always, please do not hesitate to reach out to us with any forecast questions via the chat option on the Weather Porthole or our on-call number, **(317)-560-8122** press 1 for forecast questions.

Houston Pilots Extended Range Visibility Report



Friday 5/19/23

Not anticipating any sea fog concerns at this time.



Saturday 5/20/23

No anticipating any sea fog concerns at this time.



Sunday 5/21/23

Not anticipating sea any fog concerns at this time.



Chance for Reduced Visibility

| | |
|-------------|----------|
| Friday AM | Unlikely |
| Friday PM | Unlikely |
| Saturday AM | Unlikely |
| Saturday PM | Unlikely |
| Sunday AM | Unlikely |
| Sunday PM | Unlikely |

Houston Pilots Visibility Chart (miles)



Forecast Confidence



| Time | Tue 6am | Tue 7am | Tue 8am | Tue 9am | Tue 10am | Tue 11am | Tue 12pm | Tue 1pm | Tue 2pm | Tue 3pm | Tue 4pm | Tue 5pm | Tue 6pm | Tue 7pm | Tue 8pm | Tue 9pm | Tue 10pm | Tue 11pm | Wed 12am | Wed 1am | Wed 2am | Wed 3am | Wed 4am | Wed 5am | Wed 6am | Wed 7am | Wed 8am | Wed 9am | Wed 10am | Wed 11am | Wed 12pm | Wed 1pm | Wed 2pm | Wed 3pm | Wed 4pm | Wed 5pm | |
|-------------------|---------|---------|---------|---------|----------|----------|----------|---------|---------|---------|---------|---------|---------|---------|---------|---------|----------|----------|----------|---------|---------|---------|---------|---------|---------|---------|---------|---------|----------|----------|----------|---------|---------|---------|---------|---------|----|
| 610 Bridge | 7 | 8 | 9 | 10 | 10 | 10 | 10 | 10 | 10 | 10 | 10 | 10 | 10 | 10 | 10 | 10 | 10 | 10 | 10 | 10 | 10 | 9 | 7 | 7 | 7 | 6 | 9 | 10 | 10 | 10 | 10 | 10 | 10 | 10 | 10 | 10 | 10 |
| Kinder 1 | 7 | 8 | 9 | 10 | 10 | 10 | 10 | 10 | 10 | 10 | 10 | 10 | 10 | 10 | 10 | 10 | 10 | 10 | 10 | 10 | 10 | 9 | 7 | 7 | 8 | 6 | 9 | 10 | 10 | 10 | 10 | 10 | 10 | 10 | 10 | 10 | 10 |
| Greens Bayou | 7 | 7 | 9 | 10 | 10 | 10 | 10 | 10 | 10 | 10 | 10 | 10 | 10 | 10 | 10 | 10 | 10 | 10 | 10 | 10 | 10 | 9 | 7 | 7 | 8 | 6 | 9 | 10 | 10 | 10 | 10 | 10 | 10 | 10 | 10 | 10 | 10 |
| Shell Crude | 8 | 7 | 9 | 10 | 10 | 10 | 10 | 10 | 10 | 10 | 10 | 10 | 10 | 10 | 10 | 10 | 10 | 10 | 10 | 9 | 9 | 9 | 9 | 8 | 7 | 8 | 6 | 9 | 10 | 10 | 10 | 10 | 10 | 10 | 10 | 10 | 10 |
| Lynchburg Ferries | 7 | 7 | 8 | 9 | 10 | 10 | 10 | 10 | 10 | 10 | 10 | 10 | 10 | 10 | 10 | 10 | 10 | 10 | 9 | 9 | 9 | 9 | 9 | 8 | 7 | 8 | 6 | 9 | 10 | 10 | 10 | 10 | 10 | 10 | 10 | 10 | 10 |
| Exxon 3 | 8 | 8 | 8 | 9 | 10 | 10 | 10 | 10 | 10 | 10 | 10 | 10 | 10 | 10 | 10 | 10 | 9 | 9 | 9 | 9 | 9 | 9 | 9 | 8 | 7 | 8 | 7 | 9 | 9 | 10 | 10 | 10 | 10 | 10 | 10 | 10 | 10 |
| Morgans Point | 8 | 8 | 8 | 9 | 10 | 10 | 10 | 10 | 10 | 10 | 10 | 10 | 10 | 10 | 10 | 10 | 9 | 9 | 9 | 9 | 9 | 9 | 9 | 8 | 8 | 8 | 7 | 9 | 9 | 10 | 10 | 10 | 10 | 10 | 10 | 10 | 10 |
| 75/76 | 9 | 8 | 8 | 9 | 10 | 10 | 10 | 10 | 10 | 10 | 10 | 10 | 8 | 10 | 10 | 10 | 9 | 9 | 9 | 9 | 9 | 9 | 9 | 8 | 8 | 8 | 7 | 9 | 9 | 10 | 10 | 10 | 10 | 10 | 10 | 10 | 10 |
| 63/64 | 10 | 9 | 8 | 9 | 10 | 10 | 10 | 10 | 10 | 10 | 10 | 8 | 8 | 10 | 10 | 10 | 9 | 9 | 9 | 9 | 9 | 9 | 9 | 9 | 8 | 8 | 8 | 9 | 9 | 10 | 10 | 10 | 10 | 10 | 10 | 10 | 10 |
| 51/52 | 10 | 9 | 8 | 8 | 10 | 10 | 10 | 10 | 10 | 10 | 10 | 8 | 8 | 10 | 10 | 10 | 9 | 9 | 9 | 9 | 9 | 9 | 9 | 9 | 9 | 8 | 9 | 9 | 10 | 10 | 10 | 10 | 10 | 10 | 10 | 10 | 10 |
| 37/38 | 9 | 9 | 9 | 8 | 9 | 10 | 10 | 10 | 10 | 10 | 10 | 8 | 9 | 10 | 10 | 10 | 9 | 9 | 9 | 9 | 9 | 9 | 9 | 9 | 9 | 9 | 9 | 9 | 9 | 10 | 10 | 10 | 10 | 10 | 10 | 10 | 10 |
| 25/26 | 9 | 9 | 9 | 9 | 9 | 10 | 10 | 10 | 10 | 10 | 10 | 8 | 10 | 10 | 10 | 10 | 9 | 9 | 9 | 9 | 9 | 9 | 9 | 9 | 9 | 9 | 9 | 9 | 9 | 10 | 10 | 10 | 10 | 10 | 10 | 10 | 10 |
| 11/12 | 9 | 9 | 8 | 9 | 9 | 10 | 10 | 10 | 10 | 10 | 10 | 9 | 10 | 10 | 10 | 10 | 9 | 9 | 9 | 9 | 9 | 9 | 9 | 9 | 9 | 9 | 9 | 9 | 9 | 10 | 10 | 10 | 10 | 10 | 10 | 10 | 10 |
| 1 & 2 Bravo | 8 | 9 | 8 | 9 | 9 | 9 | 10 | 10 | 10 | 10 | 10 | 10 | 10 | 10 | 10 | 10 | 9 | 9 | 9 | 9 | 9 | 9 | 9 | 9 | 9 | 9 | 9 | 9 | 9 | 10 | 10 | 10 | 10 | 10 | 10 | 10 | 10 |

NOTE: This is automated data that may/may not agree with the official BAM thinking that's found on the daily slides or special visibility report slides. This data should be used as a guide only

Houston Pilots Wind Chart



Forecast Confidence



Example

Sustained wind 13 Knots
Gusts 18 Knots
Wind from the N

WS: 13
G:18
N

| Time Knots | Tue 6am | Tue 7am | Tue 8am | Tue 9am | Tue 10am | Tue 11am | Tue 12pm | Tue 1pm | Tue 2pm | Tue 3pm | Tue 4pm | Tue 5pm | Tue 6pm | Tue 7pm | Tue 8pm | Tue 9pm | Tue 10pm | Tue 11pm | Wed 12am | Wed 1am | Wed 2am | Wed 3am | Wed 4am | Wed 5am | Wed 6am | Wed 7am | Wed 8am | Wed 9am | Wed 10am | Wed 11am | Wed 12pm | Wed 1pm | Wed 2pm | Wed 3pm | Wed 4pm | Wed 5pm | |
|-------------------|---------|---------|---------|---------|----------|----------|----------|---------|---------|---------|---------|---------|---------|---------|---------|---------|----------|----------|----------|---------|---------|---------|---------|---------|---------|---------|---------|---------|----------|----------|----------|---------|---------|---------|---------|---------|---|
| 610 Bridge | 2 | 4 | 4 | 5 | 6 | 5 | 5 | 6 | 7 | 8 | 6 | 4 | 8 | 6 | 5 | 3 | 3 | 3 | 4 | 4 | 4 | 4 | 5 | 4 | 4 | 4 | 4 | 4 | 5 | 6 | 6 | 6 | 6 | 6 | 7 | 7 | 6 |
| | W | NW | NNW | NNW | NNW | NW | NW | NW | NW | NW | NW | NNW | WSW | SSW | SW | WSW | W | W | W | W | W | W | W | W | W | W | W | W | W | W | W | W | W | W | W | W | |
| Kinder 1 | 2 | 4 | 5 | 5 | 6 | 5 | 5 | 6 | 7 | 8 | 6 | 3 | 8 | 6 | 5 | 3 | 3 | 3 | 4 | 4 | 4 | 4 | 5 | 4 | 4 | 4 | 4 | 5 | 6 | 6 | 6 | 6 | 6 | 7 | 7 | 6 | |
| | W | NW | NNW | NNW | NNW | NW | NW | NW | NW | NW | NW | NNW | SW | SSW | SW | WSW | W | W | W | W | W | W | W | W | W | W | W | W | W | W | W | W | W | W | W | W | |
| Greens Bayou | 2 | 4 | 5 | 5 | 6 | 5 | 5 | 6 | 7 | 7 | 5 | 3 | 9 | 6 | 5 | 3 | 3 | 3 | 4 | 4 | 4 | 4 | 5 | 4 | 4 | 4 | 4 | 5 | 6 | 6 | 6 | 6 | 7 | 7 | 7 | 6 | |
| | W | NW | NW | NNW | NNW | NW | NW | NW | NW | NW | NW | SSW | SSW | SW | W | W | W | W | W | W | W | W | W | W | W | W | W | W | W | W | W | W | W | W | W | W | |
| Shell Crude | 2 | 4 | 5 | 6 | 6 | 6 | 5 | 6 | 6 | 7 | 5 | 3 | 9 | 6 | 5 | 4 | 4 | 4 | 4 | 4 | 4 | 4 | 5 | 4 | 4 | 4 | 4 | 5 | 6 | 6 | 6 | 6 | 7 | 7 | 7 | 6 | |
| | W | NW | NW | NNW | NNW | NW | NW | NW | NW | NW | NW | SSW | SSW | SW | WSW | W | W | W | W | W | W | W | W | W | W | W | W | W | W | W | W | W | W | W | W | W | |
| Lynchburg Ferries | 2 | 4 | 5 | 6 | 6 | 5 | 5 | 6 | 6 | 7 | 5 | 4 | 8 | 6 | 5 | 4 | 4 | 4 | 4 | 5 | 5 | 5 | 5 | 5 | 5 | 5 | 5 | 5 | 6 | 6 | 6 | 6 | 6 | 7 | 7 | 7 | |
| | W | NW | NW | NNW | NNW | NW | NW | NW | NW | NW | NNW | NW | S | SW | WSW | W | W | W | W | W | W | W | W | W | W | W | W | W | W | W | W | W | W | W | W | W | |
| Exxon 3 | 2 | 4 | 6 | 6 | 6 | 6 | 5 | 5 | 6 | 7 | 5 | 7 | 8 | 6 | 6 | 5 | 5 | 5 | 5 | 5 | 5 | 5 | 6 | 5 | 5 | 5 | 5 | 5 | 6 | 6 | 6 | 6 | 7 | 7 | 7 | 6 | |
| | W | NW | NW | NNW | NNW | NW | NW | NW | NW | NNW | NW | S | SW | WSW | W | W | W | W | W | W | W | W | W | W | W | W | W | W | W | W | W | W | W | W | W | W | |
| Morgans Point | 4 | 4 | 7 | 7 | 7 | 6 | 6 | 5 | 6 | 6 | 7 | 6 | 9 | 10 | 7 | 7 | 6 | 6 | 6 | 6 | 6 | 6 | 6 | 7 | 6 | 6 | 6 | 6 | 6 | 6 | 6 | 6 | 6 | 7 | 7 | 7 | |
| | WSW | W | NW | NW | NNW | NNW | NW | NW | W | W | W | W | S | SW | WSW | W | W | W | W | W | W | W | W | W | W | W | W | W | W | W | W | W | W | W | W | W | |
| 75/76 | 6 | 6 | 9 | 9 | 8 | 7 | 6 | 5 | 6 | 7 | 7 | 14 | 8 | 14 | 9 | 9 | 8 | 7 | 7 | 8 | 8 | 8 | 8 | 8 | 8 | 8 | 8 | 8 | 8 | 8 | 8 | 8 | 8 | 8 | 8 | 8 | |
| | SW | W | W | NNW | NNW | NNW | SSW | SSE | SSE | SSE | WSW | SSW | WSW | WSW | W | W | W | W | W | W | W | W | W | W | W | W | W | W | W | W | W | W | W | W | W | W | |
| 63/64 | 7 | 7 | 9 | 9 | 9 | 8 | 6 | 4 | 5 | 6 | 5 | 21 | 7 | 13 | 10 | 9 | 8 | 8 | 8 | 9 | 9 | 9 | 9 | 9 | 9 | 9 | 9 | 8 | 7 | 7 | 5 | 6 | 6 | 7 | 8 | 8 | |
| | SW | WSW | W | NW | NW | NNW | SE | E | E | E | ENE | SW | WSW | WSW | W | W | W | W | W | W | W | W | W | W | W | W | W | W | W | W | W | W | W | W | W | W | |
| 51/52 | 6 | 7 | 9 | 9 | 9 | 9 | 6 | 4 | 4 | 5 | 3 | 23 | 8 | 9 | 10 | 9 | 8 | 8 | 8 | 8 | 8 | 8 | 8 | 8 | 8 | 8 | 8 | 8 | 8 | 8 | 8 | 8 | 8 | 8 | 8 | 8 | |
| | WSW | WSW | W | NNW | NNW | NNW | SSE | E | E | ESE | ESE | WSW | W | W | WSW | W | W | W | W | W | W | W | W | W | W | W | W | W | W | W | W | W | W | W | W | W | |
| 37/38 | 6 | 6 | 8 | 8 | 9 | 7 | 4 | 4 | 4 | 2 | 20 | 9 | 8 | 8 | 8 | 8 | 8 | 8 | 8 | 8 | 8 | 8 | 8 | 8 | 8 | 8 | 8 | 8 | 8 | 8 | 8 | 8 | 8 | 8 | 8 | 8 | |
| | WSW | WSW | W | NNW | NNW | NNW | S | E | ESE | SSW | W | W | NNW | W | WSW | W | W | W | W | W | W | W | W | W | W | W | W | W | W | W | W | W | W | W | W | W | |
| 25/26 | 5 | 6 | 7 | 7 | 8 | 9 | 7 | 4 | 4 | 3 | 3 | 16 | 8 | 7 | 7 | 7 | 7 | 7 | 7 | 8 | 8 | 8 | 8 | 8 | 8 | 8 | 8 | 8 | 8 | 8 | 8 | 8 | 8 | 8 | 8 | 8 | |
| | WSW | WSW | W | NNW | NNW | NNW | SSW | SE | SSW | SW | W | W | NNW | WSW | W | W | W | W | W | W | W | W | W | W | W | W | W | W | W | W | W | W | W | W | W | W | |
| 11/12 | 5 | 5 | 7 | 7 | 8 | 9 | 8 | 5 | 4 | 3 | 5 | 14 | 10 | 7 | 6 | 8 | 8 | 8 | 8 | 8 | 8 | 8 | 8 | 8 | 8 | 8 | 8 | 8 | 8 | 8 | 8 | 8 | 8 | 8 | 8 | 8 | |
| | WSW | WSW | W | NNW | NNW | NNW | NW | WSW | NNW | SSW | WSW | W | NNW | WSW | W | W | W | W | W | W | W | W | W | W | W | W | W | W | W | W | W | W | W | W | W | W | |
| 1 & 2 Bravo | 8 | 7 | 7 | 8 | 8 | 9 | 8 | 6 | 5 | 2 | 8 | 15 | 16 | 9 | 8 | 10 | 9 | 9 | 9 | 9 | 9 | 10 | 10 | 10 | 10 | 10 | 10 | 10 | 10 | 10 | 10 | 10 | 10 | 10 | 10 | | |
| | WSW | WSW | W | NNW | NNW | NNW | NW | NW | WSW | SSW | SW | W | W | W | WSW | W | W | W | W | W | W | W | W | W | W | W | W | W | W | W | W | W | W | W | W | W | |

NOTE: This is automated data that may/may not agree with the official BAM thinking that's found on the daily slides or special visibility report slides. This data should be used as a guide only

Forecast Discussion

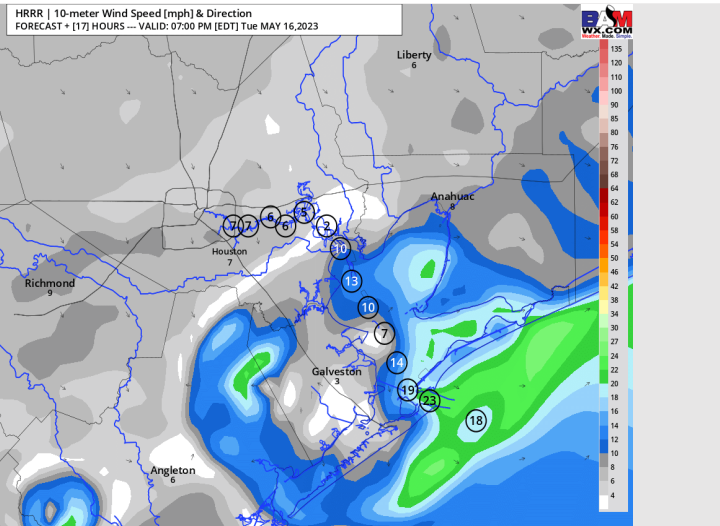
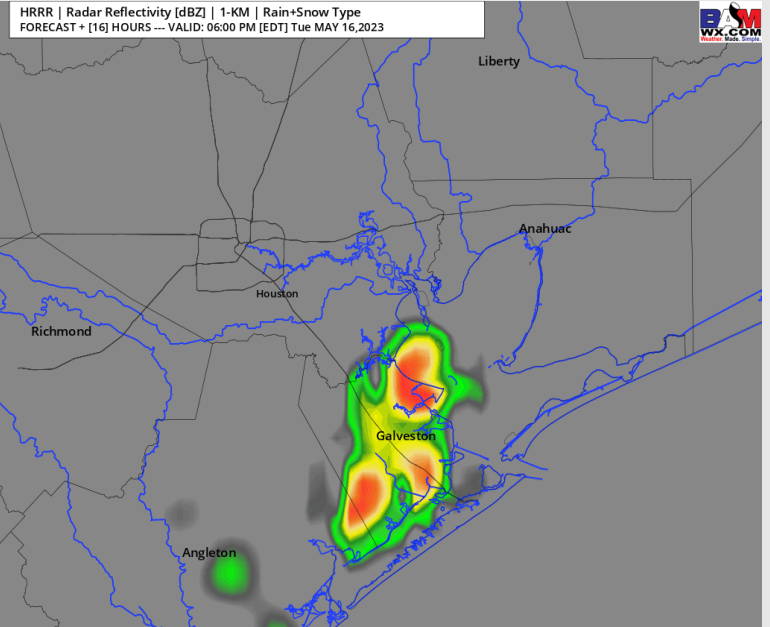
Precip: Favoring dry conditions throughout the AM hours and into the early afternoon. Around 4 - 5 PM, scattered showers and storms will begin working in and will continue the rest of the afternoon through about 10 PM. Locally stronger pockets of storms are possible. Best chances likely will remain north of our stations however, hit/ miss showers/ storms will be possible. Will need to watch if any organized storms form north of our stations that could lead to enhanced precipitation chances from 7 PM - 10 PM (low confidence).

Wind: Sustained winds out of the WSW this morning at a calm 3 - 7 kts this morning. Around 10 - 11 AM, winds will start to shift out of the NW, keeping that same calm 3 - 7 knot speed. Around 3 - 5 PM winds are expected to shift back out of the SW as a group of scattered showers move in. At this time wind speeds will pick up to about 15 - 20 kts for Stations S of Morgan's Point, with a slight increase to 5 - 10 kts for stations N of Morgan's Point until scattered showers and storms move out. Wind gusts under stronger storm cells are expected to get up to 25 - 30kts, with gusts outside of cells sitting around 12 - 17kts. No significant gusts are expected when showers and storms are not present.

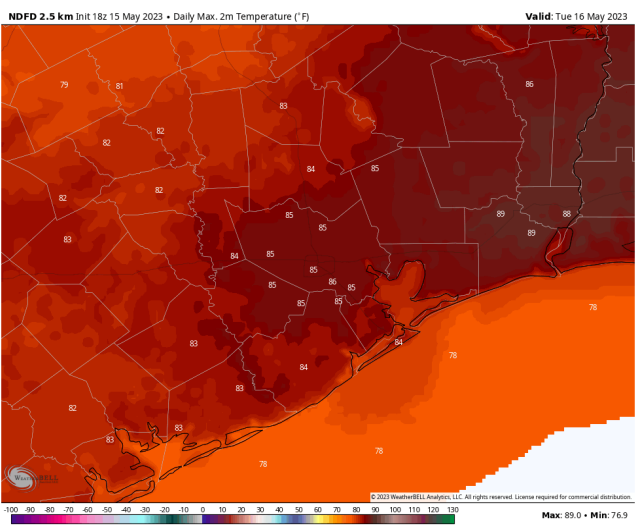
Temps: High temperatures will be in the upper 70s at the Boarding Station and in the mid 80s F at all other stations.

Visibility: No visibility risks due to fog expected at this time, however visibility could be reduced under locally stronger storm cells.

Precip Image: 5 PM CT



Wind Speed:
6 PM CT



High Temp
Today

Forecast Discussion

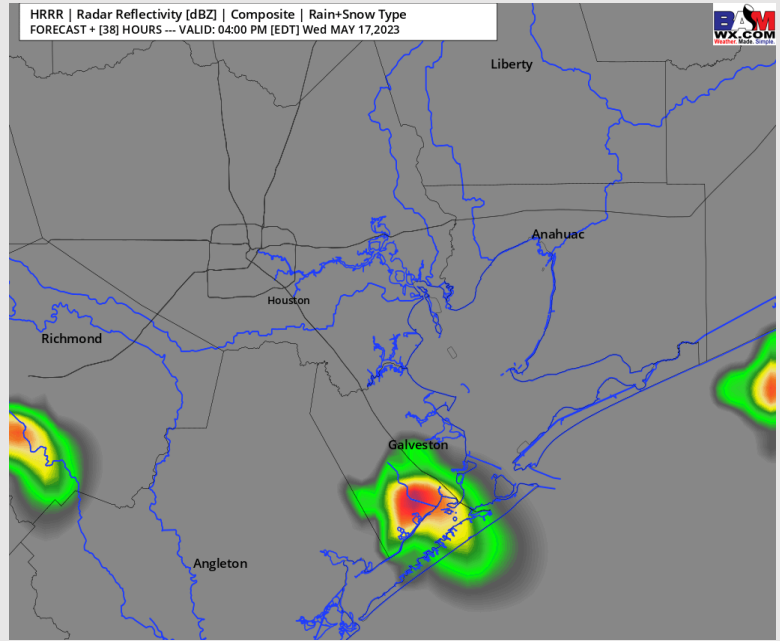
Precip: A few scattered showers and storms possible throughout Wednesday with the best coverage being for stations S of Morgan's Point during the 2 PM – 7 PM timeframe. Chance of precipitation is 30%

Wind: Winds slowly veer more to the NW through WED AM. By 9 – 10 AM sustained winds are expected to be out of the NW sustained around 3 – 7 knots. Winds into the afternoon, after 4 PM, are expected to be out of the SW for stations near/ including the boarding station sustained around 3- 7 knots. The northern half stations are expected to continue out of the NW during this time also sustained around 3 – 7 knots. Winds continue at this clip/ direction for most of the rest of the day. However, winds from 5 PM – 8 PM will be slightly elevated over open waters closer to 7 – 11 knots.

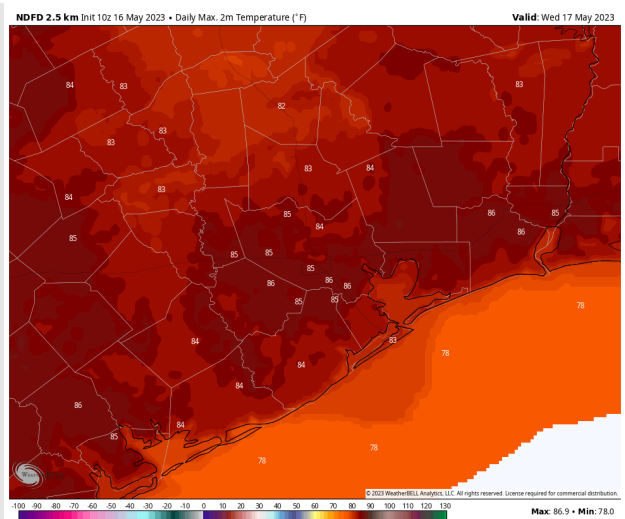
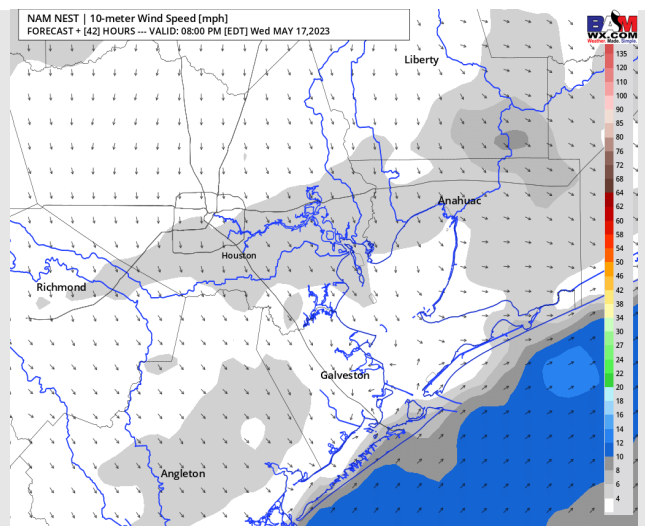
Temps: High temperatures look to get into the lower-mid 80's F on WED.

Visibility: Not anticipating any visibility concerns Wednesday.

Precip Image: 3 PM CT



**Wind Speed:
7 PM CT**

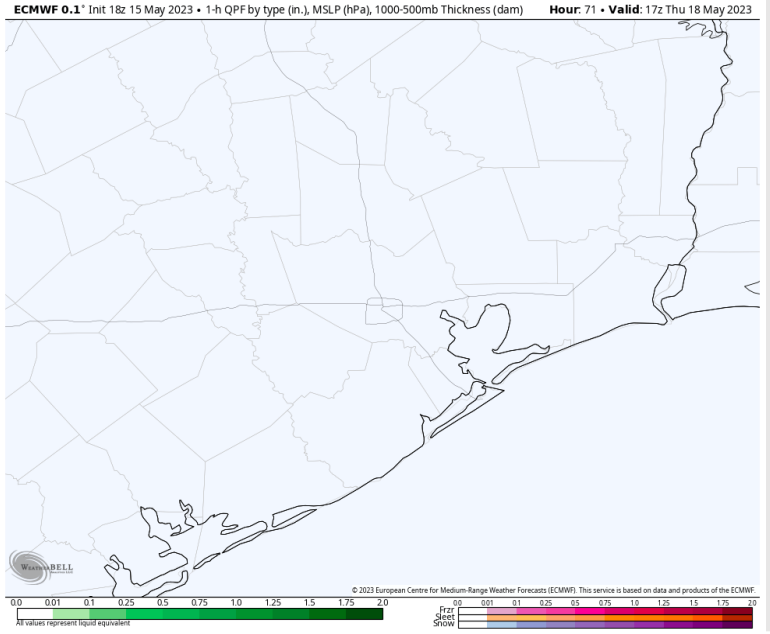


**High Temps
Wednesday**

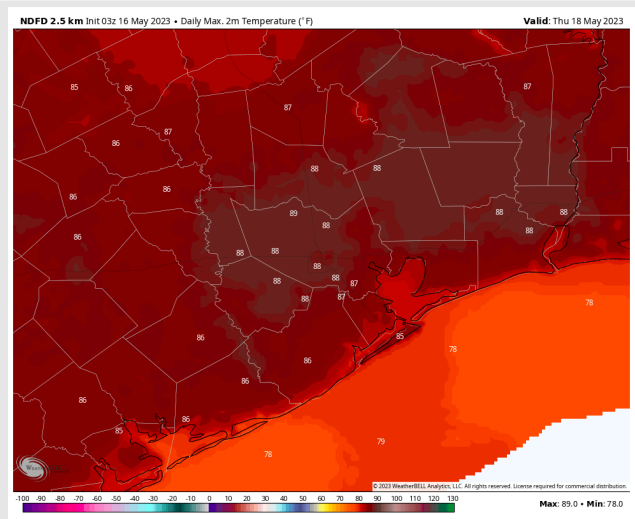
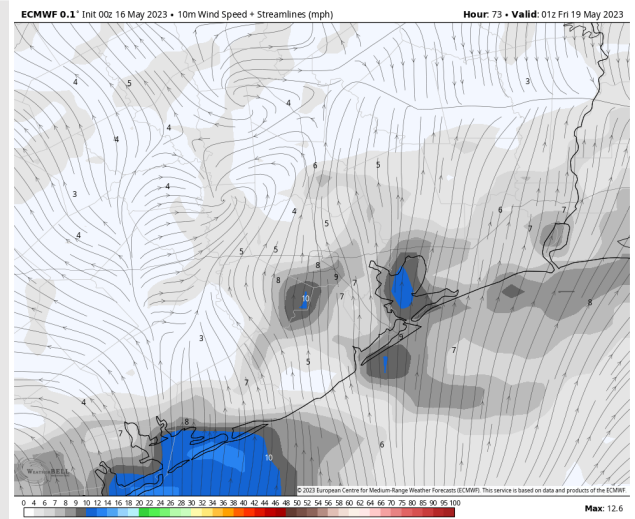
Forecast Discussion

- Precip:** Favoring dry conditions for Thursday.
- Wind:** NW winds during the early AM hours will slowly veer from NW to SE from 7 AM - 4 PM and from 4 PM to 10 PM favor a more S/SSW direction. Winds across all stations will start at 2 – 7 kts and increase to 6 – 11 kts south of Morgan’s Point by 8 PM.
- Temps:** High temperatures Thursday will be in the mid to upper 80s F across all stations and in the upper 70s F at the Boarding Station.
- Visibility:** While confidence is low at this time, worth keeping eyes out towards 3 – 7 AM for radiational fog. However limited moisture at the surface will limit extent of fog.

Precip Image: 12 PM CT



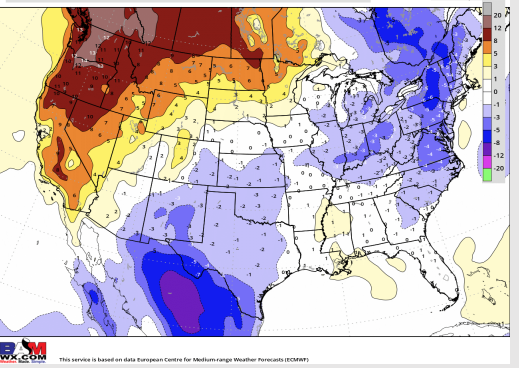
Wind Speed:
8 PM CT



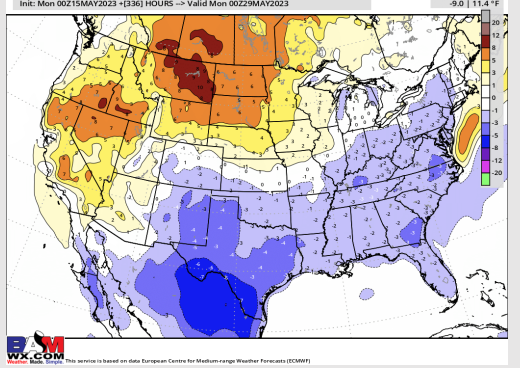
High Temps
Thursday

Houston Pilots: 5/16/23

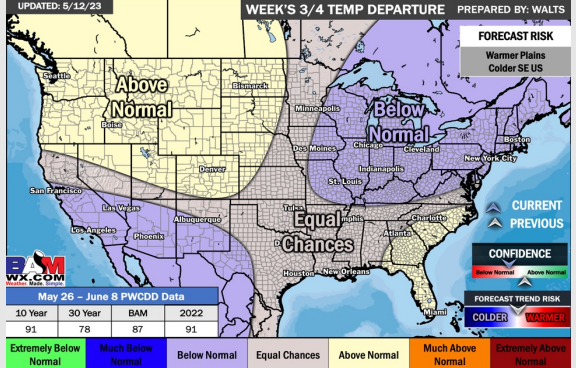
Next 7 Day Temperature Departure



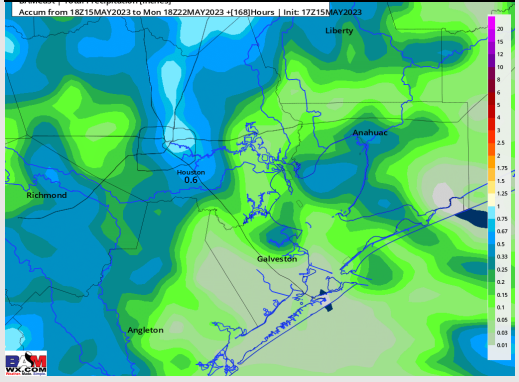
8-14 Day Temperature Departure



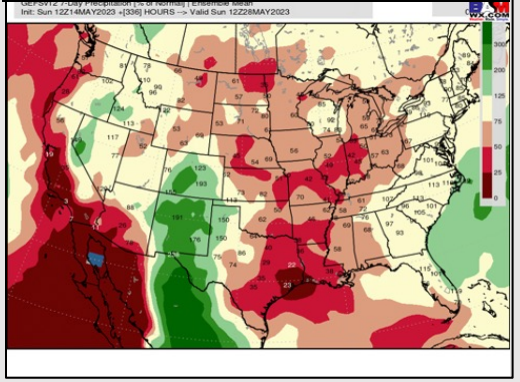
15-30 Day Temperature Departure



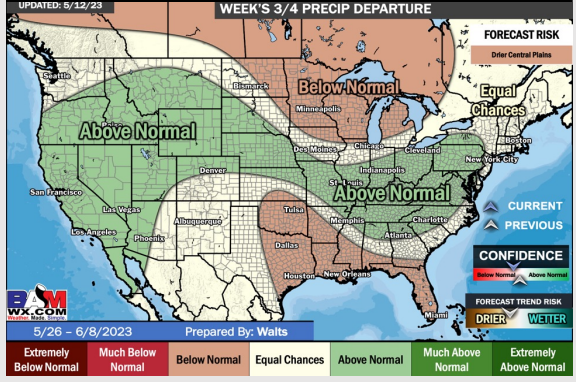
Next 7 Day Total Precipitation



8-14 Day % of Average Precip.



15-30 Day % of Average Precip.



- Rain chances expected to continue through WED AM with the next best chance coming with a front on Saturday. A few ups and downs are expected over the next 2 weeks with primarily cooler than normal temperatures expected during this time.
- Expecting below normal precipitation chances and below normal temperatures for the week 2 timeframe.
- Seasonable to near normal temperatures and seasonable to slightly below normal chances for precipitation are favored in the week 3/4 timeframe.