

Houston Pilots Forecast Package

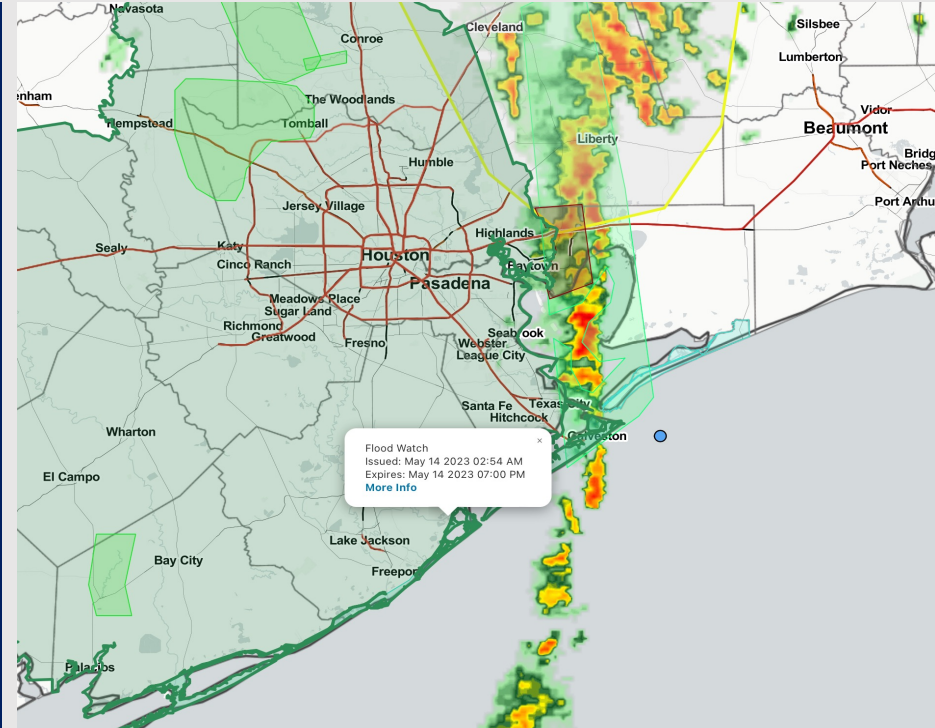


Updated: 1:30 PM CT
Sunday, May 14, 2023

Forecaster: Alyssa McClung

Weather Headlines

- Multiple rounds of showers and thunderstorms anticipated today, with PM periods of Monday and Tuesday with the best chances.
- Periods of elevated winds are likely for the early this evening as sustained winds at the Boarding Station are favored to pick up to around the 15 – 20 kt range with gusts up to 25 kts.
- Threats for sea fog formation look very low with no strong signals over the next several days.



Radar/NWS Alerts: 1:30 PM CT



As always, please do not hesitate to reach out to us with any forecast questions via the chat option on the Weather Porthole or our on-call number, **(317)-560-8122** press 1 for forecast questions.

Houston Pilots Extended Range Visibility Report



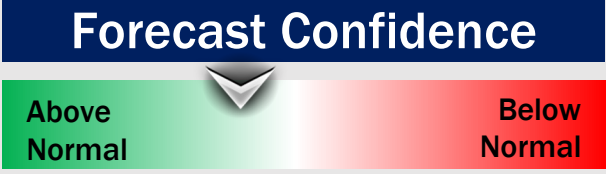
Wednesday 5/17/23

Not anticipating any sea fog concerns at this time.



Thursday 5/18/23

No anticipating any sea fog concerns at this time.



Friday 5/19/23

Not anticipating sea any fog concerns at this time.



Chance for Reduced Visibility

Wednesday AM	Unlikely
Wednesday PM	Unlikely
Thursday AM	Unlikely
Thursday PM	Unlikely
Friday AM	Unlikely
Friday PM	Unlikely

Houston Pilots Visibility Chart (miles)



Forecast Confidence



Time	Sun 1pm	Sun 2pm	Sun 3pm	Sun 4pm	Sun 5pm	Sun 6pm	Sun 7pm	Sun 8pm	Sun 9pm	Sun 10pm	Sun 11pm	Mon 12am	Mon 1am	Mon 2am	Mon 3am	Mon 4am	Mon 5am	Mon 6am	Mon 7am	Mon 8am	Mon 9am	Mon 10am	Mon 11am	Mon 12pm	Mon 1pm	Mon 2pm	Mon 3pm	Mon 4pm	Mon 5pm	Mon 6pm	Mon 7pm	Mon 8pm	Mon 9pm	Mon 10pm	Mon 11pm	Tue 12am			
610 Bridge	4	4	4	4	6	7	6	6	7	6	6	4	4	4	4	3	3	3	2	3	4	6	8	7	7	7	9	9	9	7	7	7	8	6	7	6			
Kinder 1	4	4	4	4	6	7	6	6	7	6	6	4	4	4	4	4	3	3	2	3	4	6	8	7	7	7	9	9	9	7	7	7	8	6	7	6			
Greens Bayou	4	5	4	5	6	7	6	6	7	6	6	5	4	4	4	4	4	4	3	3	4	6	8	7	7	7	9	9	9	7	7	7	8	7	7	6			
Shell Crude	4	5	5	5	6	7	6	6	8	6	6	5	4	4	4	4	4	4	3	3	4	6	8	7	7	7	9	9	9	7	7	7	8	7	7	6			
Lynchburg Ferries	4	5	6	6	6	7	6	6	8	6	6	5	5	4	4	4	5	5	4	4	5	7	8	9	9	9	9	9	9	8	9	8	8	8	8	7			
Exxon 3	4	6	6	6	6	6	6	6	9	6	6	6	5	4	4	4	4	4	3	3	5	6	8	8	8	9	9	9	9	7	8	8	8	7	8	6			
Morgans Point	4	6	6	6	6	6	6	7	10	6	6	6	6	4	4	4	7	7	6	6	7	8	8	10	10	10	10	10	10	10	10	10	8	8	8	7			
75/76	4	5	6	6	6	6	6	6	6	6	6	6	4	4	4	4	8	8	8	8	8	8	8	10	10	10	10	10	10	10	10	10	10	10	8	8	8	8	
63/64	4	5	6	6	6	6	6	6	6	6	6	5	4	4	4	4	8	8	8	8	8	8	10	10	10	10	10	10	10	10	10	10	10	10	8	8	8	8	
51/52	4	5	6	6	6	6	6	6	7	6	6	6	4	4	4	4	8	8	8	8	8	8	10	10	10	10	10	10	10	10	10	10	10	10	8	8	8	8	
37/38	4	5	6	6	6	6	6	6	7	6	6	6	4	4	4	4	8	8	8	8	8	8	10	10	10	10	10	10	10	10	10	10	10	10	10	8	8	8	8
25/26	4	5	6	6	6	7	6	6	7	6	6	5	5	4	5	4	8	8	8	8	8	8	10	10	10	10	10	10	10	10	10	10	10	10	10	10	10	10	8
11/12	4	6	6	6	6	7	6	6	7	6	6	6	5	4	5	5	8	8	8	8	8	8	10	10	10	10	10	10	10	10	10	10	10	10	10	10	10	10	10
1 & 2 Bravo	6	6	7	7	7	7	7	6	7	6	6	6	5	5	5	5	8	8	8	8	8	8	10	10	10	10	8	9	10	10	10	10	10	10	10	10	10	10	10

NOTE: This is automated data that may/may not agree with the official BAM thinking that's found on the daily slides or special visibility report slides. This data should be used as a guide only

Houston Pilots Wind Chart



Forecast Confidence



Example

Sustained wind 13 Knots
Gusts 18 Knots
Wind from the N

WS: 13
G:18
N

Time Knots	Sun 1pm	Sun 2pm	Sun 3pm	Sun 4pm	Sun 5pm	Sun 6pm	Sun 7pm	Sun 8pm	Sun 9pm	Sun 10pm	Sun 11pm	Mon 12am	Mon 1am	Mon 2am	Mon 3am	Mon 4am	Mon 5am	Mon 6am	Mon 7am	Mon 8am	Mon 9am	Mon 10am	Mon 11am	Mon 12pm	Mon 1pm	Mon 2pm	Mon 3pm	Mon 4pm	Mon 5pm	Mon 6pm	Mon 7pm	Mon 8pm	Mon 9pm	Mon 10pm	Mon 11pm	Tue 12am	
610 Bridge	9	6	6	8	10	8	2	1	1	2	2	2	1	1	3	3	2	2	2	2	3	4	4	4	5	5	6	6	6	5	5	4	3	3	3	3	
	19	13	14	18	22	14	4	5	4	2	3	2	3	4	3	4	3	3	2	2	3	4	6	6	7	7	8	9	9	9	8	7	5	6	5	5	4
Kinder 1	9	6	5	8	10	7	2	1	1	1	2	2	2	1	1	3	3	2	2	2	2	3	4	4	5	5	6	6	6	6	5	4	3	3	3	3	
	19	12	13	18	22	14	5	5	3	2	2	3	3	4	3	4	3	3	3	2	3	4	6	6	7	7	8	9	9	9	8	7	5	6	5	5	4
Greens Bayou	9	7	6	10	11	5	1	1	1	1	2	2	1	1	2	3	2	2	2	2	2	3	3	4	4	5	5	6	6	6	6	5	3	3	3	3	
	18	12	13	19	21	13	6	6	3	2	2	2	2	3	3	4	3	3	3	3	3	4	5	6	7	8	8	9	9	8	7	6	6	4	4	4	
Shell Crude	8	8	7	11	11	4	1	2	1	1	2	2	1	1	2	3	3	2	2	2	2	3	3	4	5	5	6	6	7	7	6	5	4	3	3	3	
	18	13	14	20	21	12	8	7	4	2	2	3	3	4	4	5	3	3	3	3	3	5	6	6	7	8	8	9	9	8	7	6	6	5	5	5	
Lynchburg Ferries	9	9	9	12	14	5	1	3	1	1	2	2	1	1	2	4	3	2	3	2	3	4	4	5	5	5	6	7	7	6	6	4	4	3	3	3	
	17	15	15	21	22	13	10	8	5	3	3	4	4	4	4	3	5	4	3	4	4	5	6	6	7	8	8	9	9	9	8	8	6	6	5	5	5
Exxon 3	10	10	10	12	13	8	4	3	2	1	3	3	2	2	2	4	4	3	3	3	4	4	5	5	5	5	6	7	7	6	5	5	5	4	4	4	4
	17	16	16	21	19	14	13	8	8	5	7	8	8	7	5	6	5	4	4	4	5	6	7	7	8	8	9	9	9	8	7	6	5	5	5	5	5
Morgans Point	11	12	13	15	10	8	9	5	6	4	6	6	5	5	4	6	5	4	4	4	4	5	5	5	6	6	7	8	8	8	7	6	6	5	5	5	5
	18	17	19	22	18	13	14	9	10	8	11	10	10	9	7	7	6	5	5	5	6	6	7	8	8	8	9	10	10	9	9	8	7	6	6	6	6
75/76	14	15	18	19	13	9	11	7	10	9	10	10	9	8	6	8	7	6	5	5	5	5	5	6	6	7	7	8	9	10	9	9	8	7	7	6	6
	19	18	21	23	20	11	12	11	13	11	12	12	10	8	8	8	8	6	6	6	6	6	6	8	8	9	10	10	11	11	10	11	9	8	8	7	7
63/64	16	16	19	13	7	9	8	11	11	11	11	10	9	7	8	7	6	5	5	6	6	6	6	6	7	7	8	9	10	9	10	8	7	7	7	6	6
	19	19	22	23	17	8	11	12	15	14	13	12	10	8	9	8	7	6	6	6	6	6	8	8	10	10	10	11	10	10	9	8	8	8	8	7	7
51/52	16	15	19	19	11	7	8	9	10	12	10	11	10	9	7	8	7	6	5	5	6	5	6	6	7	7	8	9	9	9	9	8	7	7	7	6	6
	19	19	23	23	15	7	9	13	15	15	12	13	13	11	8	9	8	6	6	6	6	7	6	8	8	10	9	10	10	10	10	8	8	8	8	7	7
37/38	15	14	18	18	11	8	7	8	10	12	9	10	10	9	6	7	7	6	5	5	6	6	6	6	7	7	8	8	9	8	7	6	6	6	7	6	6
	18	18	23	24	17	8	9	14	15	16	12	12	13	12	8	8	7	6	6	6	6	6	6	8	8	9	9	9	10	10	9	8	7	7	7	7	6
25/26	14	13	16	16	13	8	7	7	9	11	8	8	9	8	6	7	6	6	5	5	6	6	6	6	6	7	7	7	8	8	7	6	6	6	6	5	5
	18	18	23	23	20	9	10	13	15	16	13	13	14	12	8	8	7	6	6	6	6	7	7	8	8	9	9	9	9	8	8	7	7	7	7	7	6
11/12	15	14	16	17	18	8	7	7	10	12	10	10	10	9	6	7	7	6	5	6	6	6	6	7	7	7	7	8	8	7	7	6	6	6	6	6	6
	19	19	22	24	23	9	10	14	14	16	14	13	14	13	9	8	7	7	6	7	7	7	7	7	8	8	8	8	8	8	7	7	7	7	7	7	7
1 & 2 Bravo	17	16	17	19	19	9	7	10	10	13	13	12	12	11	8	9	8	7	7	7	7	7	7	7	7	7	7	7	8	8	8	8	7	7	8	7	7
	21	21	23	25	21	10	9	16	14	15	16	15	15	13	10	10	8	8	7	8	8	8	7	8	7	8	8	8	8	8	8	8	8	8	8	8	9

NOTE: This is automated data that may/may not agree with the official BAM thinking that's found on the daily slides or special visibility report slides. This data should be used as a guide only

Houston Pilots: Sun. 5/14/2023



Forecast Discussion

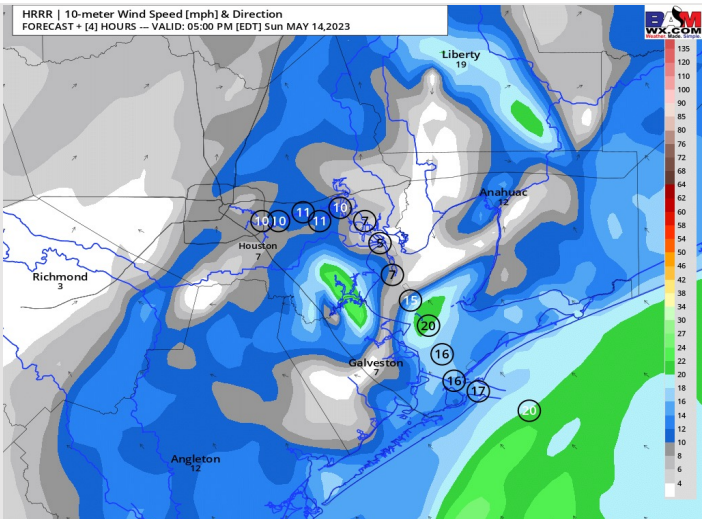
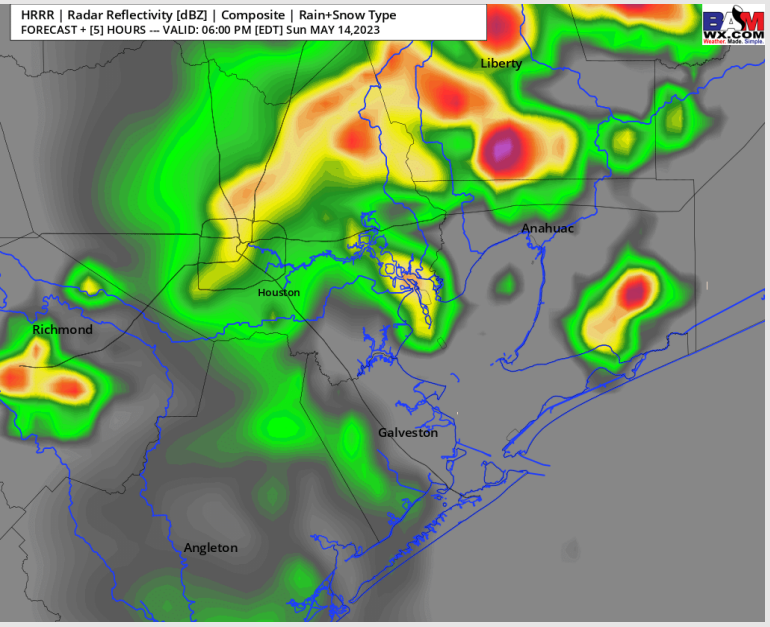
Precip: Anticipating scattered to widespread showers and storms to work over the area through most of the afternoon. Around 7 PM, chances will taper off. An isolated pop up or two can't be ruled out for the remainder of the evening.

Wind: Favoring winds to be out of the SE throughout today. Winds north of Morgan's Point in the 10-15 kts range while winds south of Morgan's Point at 17-22 kts. **Gusts may reach 25 kts embedded within the stronger storms.**

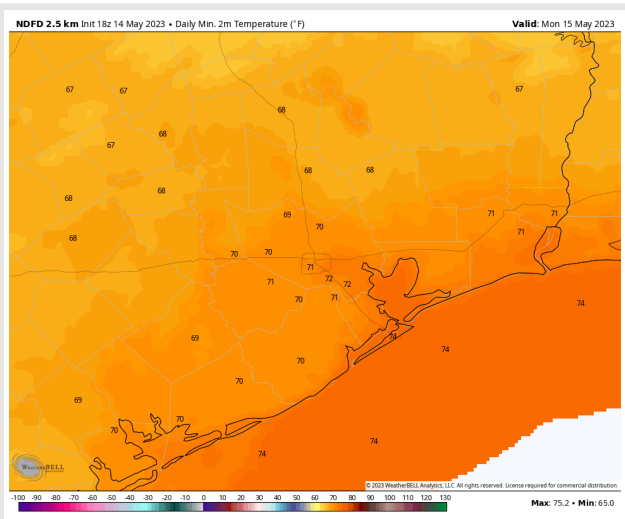
Temps: Low temperatures Monday morning in the mid 70s F for stations south of Morgan's Point and in the low 70s F for stations north of Morgan's Point.

Visibility: Not anticipating any visibility concerns at this time via fog, but visibility could be reduced by locally heavier showers and storms.

Precip Image: 5 PM CT



**Wind Speed:
4 PM CT**



**Low Temps
Monday AM**

Houston Pilots: Mon. 5/15/2023



Forecast Discussion

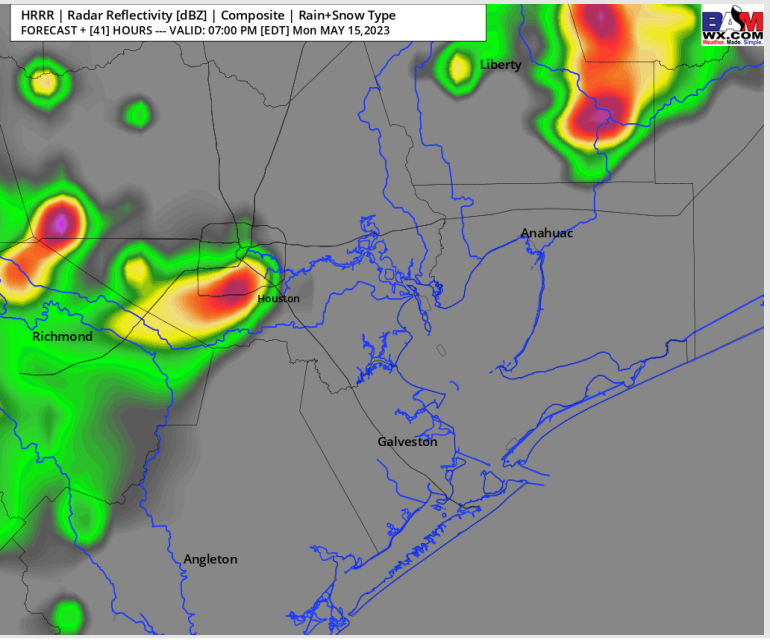
Precip: Favoring dry conditions throughout the morning Monday. After noon, scattered showers and storms are expected to work in which will likely last through the rest of the day. Best chance for a scattered storm or two will be from 4PM to 9PM. Favoring the heaviest of this rain to sit just North of Stations.

Wind: Favoring winds out of the ENE Monday morning at 3 – 8 kts. Winds will remain fairly calm through the day but will become variable getting into the late afternoon.

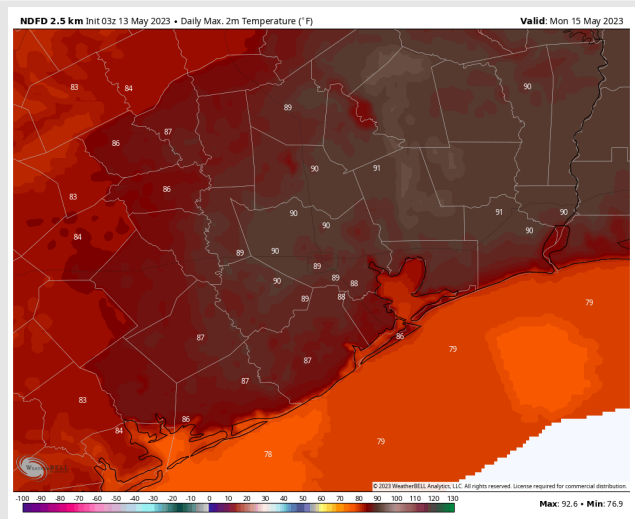
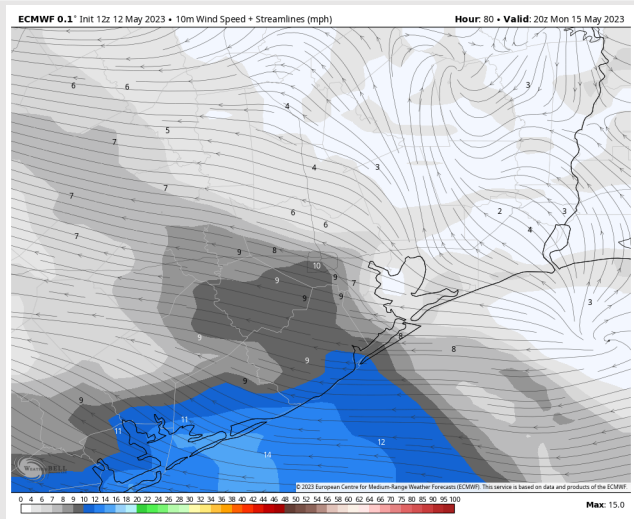
Temps: High temperatures Monday in the upper 70s F for stations south of Morgan's Point and in the upper 80s F for stations N of Morgan's Point.

Visibility: Model data picking up on a low end risk for radiation fog north of stations Monday morning. Not anticipating this to impacts stations.

Precip Image: 6 PM CT



Wind Speed:
3 PM CT



High Temps
Monday

Forecast Discussion

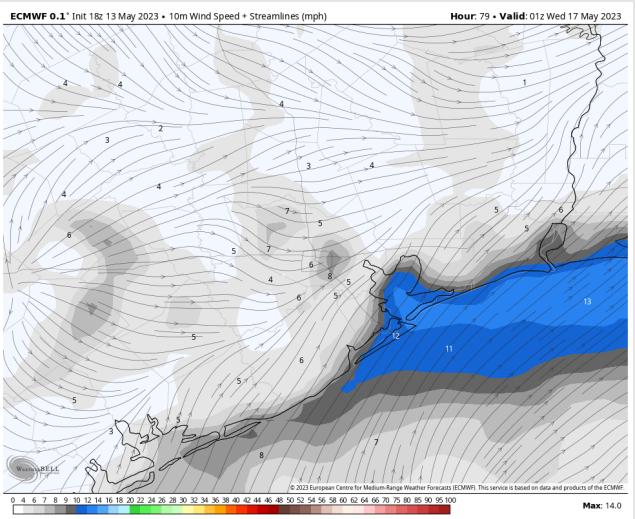
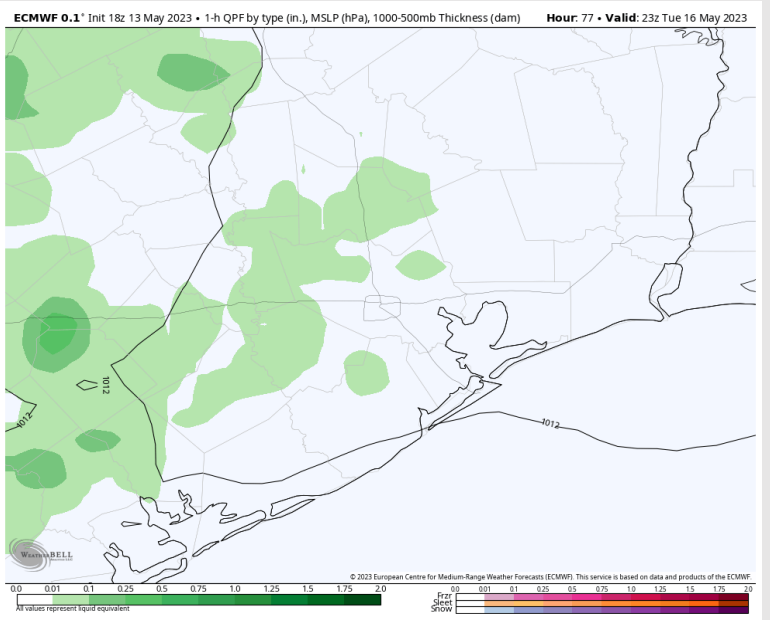
Precip: Favoring dry conditions through the morning Tuesday. After 12 PM, I would anticipate scattered showers and storms to begin working in where they will continue through the rest of the day.

Wind: Winds expected to be out of the NNW through the morning Tuesday before shifting out of the W around the 12 PM timeframe and then from the SW getting into the late evening. Sustained winds at 3-8 kts for all stations through most of the day with winds increasing to 10-15 kts for stations S of Morgan's Point through the afternoon. Gusts will near 18 kts.

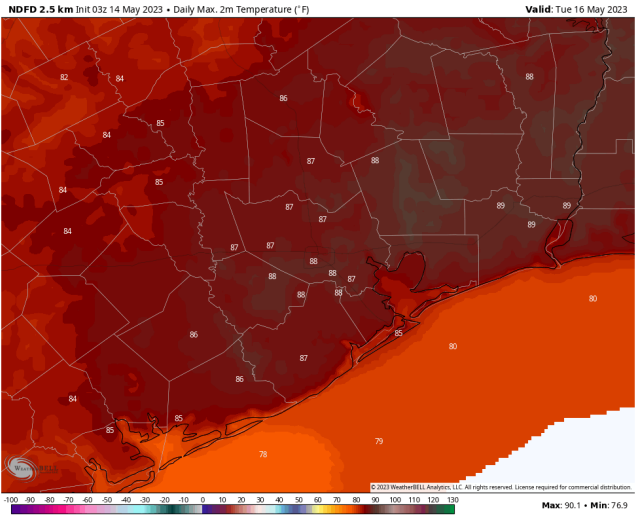
Temps: High temperature Tuesday near 80 F at the Boarding Station and in the upper 80s F at all other stations.

Visibility: Anticipating a risk for radiation fog Tuesday morning for stations N of Morgan's Point.

Precip Image: 6 PM CT



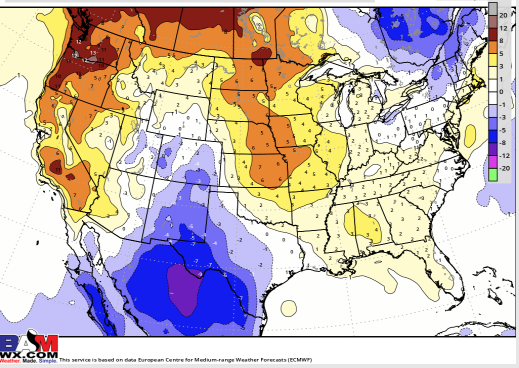
**Wind Speed:
8 PM CT**



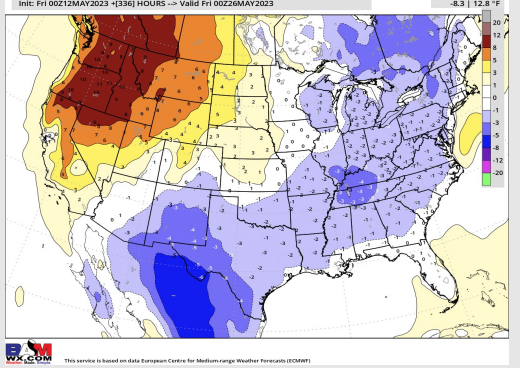
**High Temp
Tuesday**

Houston Pilots: 5/14/23

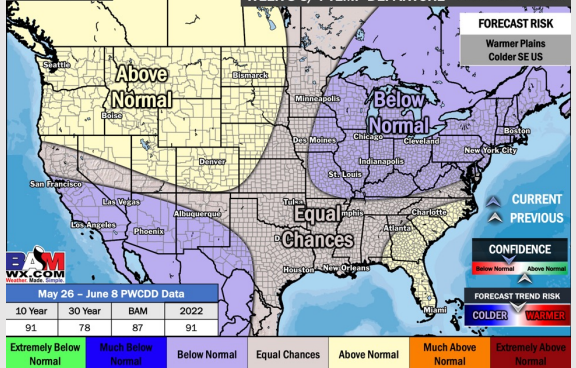
Next 7 Day Temperature Departure



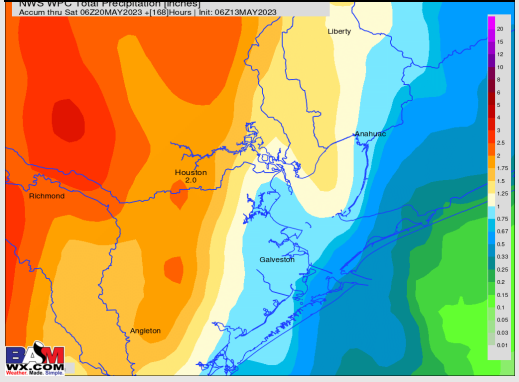
8-14 Day Temperature Departure



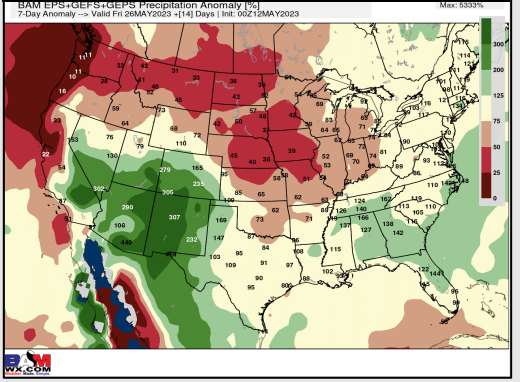
15-30 Day Temperature Departure



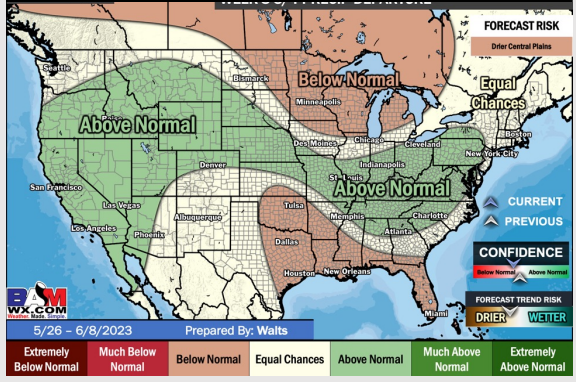
Next 7 Day Total Precipitation



8-14 Day % of Average Precip.



15-30 Day % of Average Precip.



- Rain chances expected to continue through today and the start of the week. Temperatures near normal for this time of year but starting to trend cooler.
- Expecting near normal precipitation chances and slightly below normal temperatures for the week 2 timeframe.
- Seasonable to near normal temperatures and seasonable to slightly below normal chances for precipitation are favored in the week ¾ timeframe.