

# Houston Pilots Forecast Package



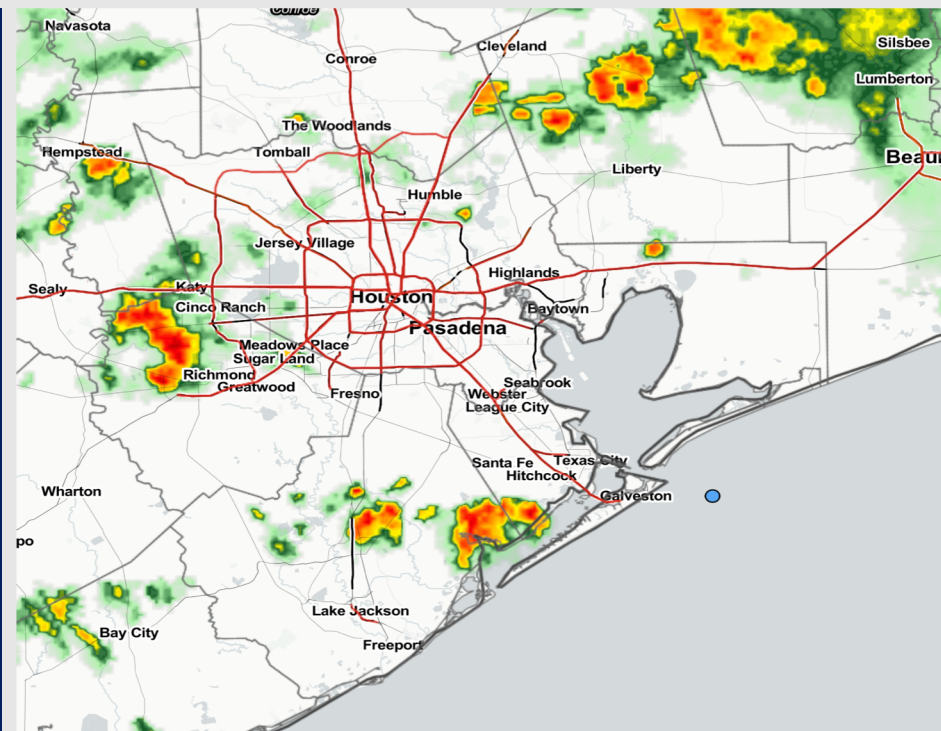
Updated: 12:45 PM CT

Wednesday, May 10, 2023

Forecaster: Tyler Riggles

## Weather Headlines

- Watching for an active period of rounds of showers and thunderstorms over the next few days, check the daily slides below for more info on a few severe threats to watch.
- Periods of elevated winds are likely for Today and especially Thursday as sustained winds at the Boarding Station are favored to remain around the 15 – 20 kt range.
- Threats for sea fog formation look very low with no strong signals over the next several days.



**Radar/NWS Alerts: 12:45 PM CT**



As always, please do not hesitate to reach out to us with any forecast questions via the chat option on the Weather Porthole or our on-call number, **(317)-560-8122** press 1 for forecast questions.

# Houston Pilots Extended Range Visibility Report



## Saturday 5/13/23

Reduced visibility not a concern at this time for Saturday



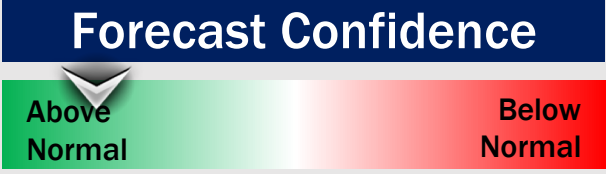
## Monday 5/15/23

Will need to watch for a low end chance of radiation fog Monday AM



## Sunday 5/14/23

Not expecting fog risks for Sunday



## Chance for Reduced Visibility

Saturday AM	Unlikely
Saturday PM	Unlikely
Sunday AM	Unlikely
Sunday PM	Unlikely
Monday AM	Possible
Monday PM	Unlikely

# Houston Pilots Visibility Chart (miles)



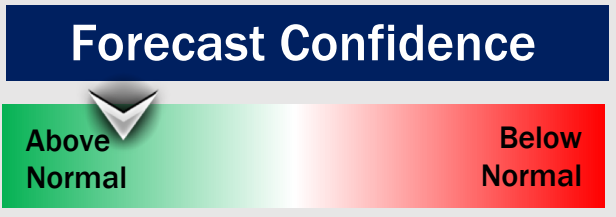
## Forecast Confidence



Time	Wed 12pm	Wed 1pm	Wed 2pm	Wed 3pm	Wed 4pm	Wed 5pm	Wed 6pm	Wed 7pm	Wed 8pm	Wed 9pm	Wed 10pm	Wed 11pm	Thu 12am	Thu 1am	Thu 2am	Thu 3am	Thu 4am	Thu 5am	Thu 6am	Thu 7am	Thu 8am	Thu 9am	Thu 10am	Thu 11am	Thu 12pm	Thu 1pm	Thu 2pm	Thu 3pm	Thu 4pm	Thu 5pm	Thu 6pm	Thu 7pm	Thu 8pm	Thu 9pm	Thu 10pm	Thu 11pm			
610 Bridge	6	6	6	6	6	6	6	6	6	6	6	6	6	6	6	6	6	6	6	6	5	4	6	8	10	10	10	10	10	10	10	10	10	8	7	10	6	8	
Kinder 1	6	6	6	6	6	6	6	6	6	6	6	6	6	6	6	6	6	6	6	6	5	5	6	8	10	10	10	10	10	10	10	10	10	8	7	10	6	8	
Greens Bayou	5	5	6	6	6	6	6	6	6	6	6	6	6	6	6	6	7	7	7	7	7	6	7	7	10	10	10	10	10	10	10	10	10	10	8	7	8	7	8
Shell Crude	5	5	5	5	6	5	5	6	6	6	6	6	6	6	6	6	8	8	8	8	8	8	8	8	10	10	10	10	10	10	10	10	10	10	8	8	8	8	8
Lynchburg Ferries	4	4	5	5	6	5	5	5	6	6	6	6	6	6	6	6	8	8	8	8	8	8	8	8	10	10	10	9	10	9	10	10	10	8	8	8	8	8	
Exxon 3	4	4	4	4	5	5	5	5	6	6	6	6	6	6	6	5	8	8	8	8	8	8	10	8	10	10	10	10	8	10	9	10	10	10	8	8	8	8	8
Morgans Point	4	4	4	4	5	5	5	5	6	6	6	6	6	6	6	5	8	8	8	8	8	10	10	8	10	10	10	10	8	10	10	10	10	10	8	8	8	8	8
75/76	4	4	4	4	5	5	5	5	6	6	6	6	6	6	6	4	8	10	10	8	10	10	10	10	10	10	10	10	8	10	10	10	10	10	8	8	8	8	8
63/64	5	4	5	5	5	5	5	6	6	6	6	6	6	6	6	5	10	10	10	10	10	10	10	10	10	10	10	8	8	10	8	10	10	10	8	8	8	8	8
51/52	6	4	5	6	6	5	5	6	6	6	6	6	6	6	6	5	10	10	10	10	10	10	10	10	10	10	10	8	8	10	8	10	10	10	8	8	8	8	8
37/38	6	6	6	6	6	5	5	6	6	6	6	6	6	6	6	5	10	10	10	10	10	10	10	10	10	10	10	8	8	10	8	10	10	10	8	8	8	8	8
25/26	6	6	6	6	6	6	6	6	6	6	6	6	6	6	6	6	10	10	10	10	10	10	10	10	10	10	10	8	8	10	8	10	10	10	8	8	8	8	8
11/12	6	6	6	6	6	6	6	6	6	6	6	6	6	6	6	6	10	10	10	10	10	10	8	10	10	10	10	8	8	8	8	8	10	8	8	8	8	8	
1 & 2 Bravo	6	6	6	6	6	5	5	5	6	6	6	5	5	5	5	5	10	10	10	10	10	10	8	10	10	10	10	8	8	8	8	8	8	8	8	8	8	8	

**NOTE: This is automated data that may/may not agree with the official BAM thinking that's found on the daily slides or special visibility report slides. This data should be used as a guide only**

# Houston Pilots Wind Chart



**Sustained wind 13 Knots**  
**Gusts 18 Knots**  
**Wind from the N**

**Example**  
**WS: 13**  
**G:18**  
**N**

Time Knots	Wed 12pm	Wed 1pm	Wed 2pm	Wed 3pm	Wed 4pm	Wed 5pm	Wed 6pm	Wed 7pm	Wed 8pm	Wed 9pm	Wed 10pm	Wed 11pm	Thu 12am	Thu 1am	Thu 2am	Thu 3am	Thu 4am	Thu 5am	Thu 6am	Thu 7am	Thu 8am	Thu 9am	Thu 10am	Thu 11am	Thu 12pm	Thu 1pm	Thu 2pm	Thu 3pm	Thu 4pm	Thu 5pm	Thu 6pm	Thu 7pm	Thu 8pm	Thu 9pm	Thu 10pm	Thu 11pm				
<b>610 Bridge</b>	5 11 SE	3 6 SE	5 9 S	5 10 S	7 14 SSE	9 17 S	8 18 S	3 12 SE	4 12 E	3 8 E	3 10 SSE	3 10 SSE	3 11 SSE	4 11 SSE	4 12 SSE	8 13 SSE	9 13 SSE	8 13 SSE	8 12 SSE	10 15 SSE	10 15 S	10 16 S	10 16 S	10 15 S	10 16 S	11 16 S	11 16 S	10 15 SSE	11 16 SSE	11 16 SSE	12 16 SSE	11 16 SSE	11 16 SSE	10 15 SSE	11 16 SSE					
<b>Kinder 1</b>	4 10 SE	4 7 SE	5 9 S	4 10 S	7 14 SSE	9 17 S	8 19 S	3 11 SE	4 12 E	2 8 E	3 11 SSE	3 10 SSE	3 11 SSE	3 11 SSE	4 12 SSE	8 13 SSE	8 13 SSE	8 13 SSE	8 12 SSE	10 15 SSE	9 14 S	10 15 S	10 15 S	10 15 S	10 16 S	11 16 S	11 16 S	10 15 SSE	11 16 SSE	11 16 SSE	12 16 SSE	11 16 SSE	11 16 SSE	10 15 SSE	11 16 SSE					
<b>Greens Bayou</b>	4 8 SSE	5 8 SSE	5 10 S	4 10 S	8 14 SSE	9 18 S	7 18 S	3 11 SSE	3 11 E	1 8 E	3 11 SSE	3 11 SSE	3 11 SSE	3 10 SSE	4 11 SSE	8 13 SSE	8 12 SSE	8 12 SSE	8 12 SSE	10 15 SSE	9 14 S	10 15 S	10 15 S	10 15 S	11 16 S	11 16 S	11 16 S	11 16 S	10 15 SSE	11 16 SSE	11 16 SSE	12 16 SSE	11 16 SSE	11 16 SSE	10 15 SSE	11 16 SSE				
<b>Shell Crude</b>	4 9 SSE	6 9 SSE	6 10 S	5 10 S	8 14 SSE	9 17 S	8 18 S	5 13 SSE	3 12 E	1 9 E	2 10 SSE	4 12 SSE	4 12 SSE	3 11 SSE	3 12 SSE	9 13 SSE	9 13 SSE	9 13 SSE	9 13 SSE	8 15 SSE	10 16 S	9 15 S	10 16 S	10 16 S	11 17 S	11 17 S	11 17 S	11 17 S	11 16 SSE	12 17 SSE	12 17 SSE	11 16 SSE	11 16 SSE	11 16 SSE	10 15 SSE	11 16 SSE				
<b>Lynchburg Ferries</b>	5 9 SSE	7 10 SSE	6 11 S	5 10 S	8 13 SSE	9 18 S	7 18 S	6 14 SSE	3 11 E	1 9 E	2 10 SSE	4 12 SSE	4 13 SSE	2 12 S	3 12 S	9 14 SSE	10 15 SSE	10 14 SSE	9 13 SSE	10 15 SSE	10 16 S	10 16 S	11 17 S	11 17 S	11 17 S	11 17 S	12 18 S	12 18 S	12 18 S	12 18 S	12 18 S	13 19 S	12 18 S	12 18 S	11 17 SSE	12 18 SSE				
<b>Exxon 3</b>	6 12 SSE	7 12 SSE	6 12 SSE	7 11 S	9 14 SSE	10 18 S	9 18 S	8 16 SSE	3 12 E	3 12 E	4 13 SSE	5 14 SSE	6 16 S	5 16 S	11 15 S	11 15 S	11 15 S	11 15 S	11 15 S	10 14 S	11 15 S	11 16 S	11 16 S	12 17 S	12 17 S	12 18 S	12 18 S	13 19 S	13 19 S	13 19 S	13 19 S	14 20 S	13 19 S	13 19 S	12 18 SSE	13 19 SSE				
<b>Morgans Point</b>	7 13 SSE	8 14 SSE	8 12 S	9 12 S	11 15 SSE	12 17 SSE	13 18 SSE	9 15 SSE	6 14 SSE	7 15 SSE	8 16 SSE	10 18 SSE	9 18 SSE	9 18 SSE	13 18 SSE	13 18 S	13 17 S	13 16 S	12 16 S	13 16 S	12 16 S	13 17 S	13 17 S	12 16 S	13 17 S	12 16 S	13 17 S	14 18 S	14 18 S	14 18 S	14 18 S	14 18 S	14 18 S	14 18 S	14 18 S	14 18 S	14 18 S			
<b>75/76</b>	8 13 SSE	8 14 SSE	11 13 S	11 13 S	12 14 SSE	15 17 SSE	16 19 SSE	8 13 SSE	10 16 SSE	10 16 SSE	13 18 SSE	13 18 SSE	14 19 SSE	14 19 SSE	14 19 SSE	16 20 S	17 20 S	17 20 S	16 19 S	16 19 S	16 19 S	15 18 S	15 18 S	15 17 S	15 17 S	14 16 S	14 17 S	15 18 S	15 18 S	15 18 S	15 18 S	15 18 S	15 18 S	15 18 S	15 18 S	15 18 S	15 18 S			
<b>63/64</b>	8 14 SSE	9 14 SSE	12 14 S	11 13 S	14 16 SSE	18 20 S	16 21 S	6 15 SSE	11 17 SSE	11 17 SSE	14 19 SSE	14 19 SSE	15 20 SSE	15 20 SSE	16 21 S	18 21 S	18 20 S	18 20 S	18 19 S	17 18 S	17 18 S	16 17 S	16 17 S	16 17 S	15 16 S	15 16 S	14 15 SSE	15 16 SSE	15 16 SSE	15 16 SSE	15 16 SSE	15 16 SSE	15 16 SSE	15 16 SSE	15 16 SSE	15 16 SSE	15 16 SSE			
<b>51/52</b>	6 14 S	12 14 SSE	12 13 S	10 12 S	10 12 S	14 16 SSE	18 20 S	6 15 SSE	11 18 SSE	11 18 SSE	13 19 SSE	14 19 SSE	15 20 SSE	16 20 SSE	16 19 S	18 20 S	18 20 S	18 19 S	18 19 S	18 18 S	17 18 S	17 18 S	16 17 S	16 17 S	16 16 S	15 16 S	15 16 S	14 15 SSE	14 16 SSE	14 16 SSE	14 16 SSE	14 16 SSE	14 16 SSE	14 16 SSE	14 16 SSE	14 16 SSE	14 16 SSE	14 16 SSE		
<b>37/38</b>	6 13 S	13 15 SSE	11 13 S	9 11 S	10 12 S	14 17 S	17 18 S	6 12 SSE	11 16 SSE	11 16 SSE	13 18 SSE	13 18 SSE	15 19 SSE	14 19 SSE	14 19 SSE	17 19 S	17 19 S	17 19 S	17 19 S	17 18 S	16 18 S	16 18 S	16 17 S	16 17 S	15 16 S	15 16 S	15 16 S	14 15 SSE	14 15 SSE	14 15 SSE	14 15 SSE	14 15 SSE	14 15 SSE	14 15 SSE	14 15 SSE	14 15 SSE	14 15 SSE	14 15 SSE		
<b>25/26</b>	6 12 S	12 14 SSE	10 12 S	8 10 S	10 12 S	13 17 S	12 18 S	6 12 SSE	10 16 SSE	10 16 SSE	11 18 SSE	11 18 SSE	13 19 SSE	12 19 SSE	12 18 S	15 18 S	15 18 S	15 18 S	15 17 S	15 17 S	15 17 S	15 17 S	15 17 S	14 15 S	14 15 S	14 15 S	13 14 S	14 15 S	14 15 S	14 15 S	14 15 S	14 15 S	14 15 S	14 15 S	14 15 S	14 15 S	14 15 S	14 15 S	14 15 S	
<b>11/12</b>	8 14 S	12 14 SSE	10 12 S	8 9 S	11 13 SSE	14 16 S	10 16 S	5 11 SSE	11 17 SSE	11 17 SSE	12 18 SSE	13 19 SSE	14 19 SSE	13 18 S	13 18 S	15 18 S	15 18 S	15 18 S	15 17 S	15 17 S	15 17 S	15 17 S	15 17 S	14 15 S	14 15 S	14 15 S	13 14 S	14 15 S	14 15 S	14 15 S	14 15 S	14 15 S	14 15 S	14 15 S	14 15 S	14 15 S	14 15 S	14 15 S	14 15 S	
<b>1 &amp; 2 Bravo</b>	12 15 SSE	13 16 SSE	10 13 S	9 14 SSE	14 17 SSE	15 19 SSE	15 19 S	6 13 SSE	13 18 SSE	13 18 SSE	16 20 SSE	16 20 SSE	16 20 SSE	16 20 SSE	16 18 S	18 19 S	18 19 S	18 19 S	18 19 S	18 18 S	17 19 S	17 18 S	16 17 S	16 17 S	16 16 S	15 16 S	15 16 S	14 15 SSE	15 16 SSE	15 16 SSE	15 16 SSE	15 16 SSE	15 16 SSE	15 16 SSE	15 16 SSE	15 16 SSE	15 16 SSE	15 16 SSE	15 16 SSE	15 16 SSE

**NOTE: This is automated data that may/may not agree with the official BAM thinking that's found on the daily slides or special visibility report slides. This data should be used as a guide only**



## Forecast Discussion

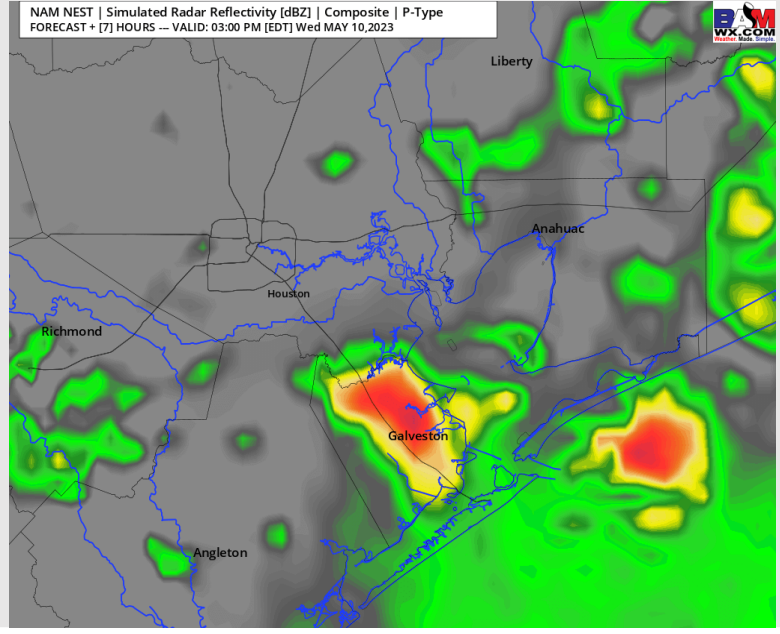
**Precip:** Widespread showers and thunderstorms expecting to become more scattered into the afternoon. Then by 9 PM, favoring dry conditions to move into the area. A locally strong to severe storm will be possible as energy moves through the area.

**Wind:** Sustained winds remain from the SE, with speeds of about 12 – 17 kts, however higher wind gusts of 30– 35+ kts possible due to scattered storms. Winds of 8 – 12 kts north of Morgan’s Point. Locally higher winds of 25 – 30 kts possible at the Boarding Station at 1 PM.

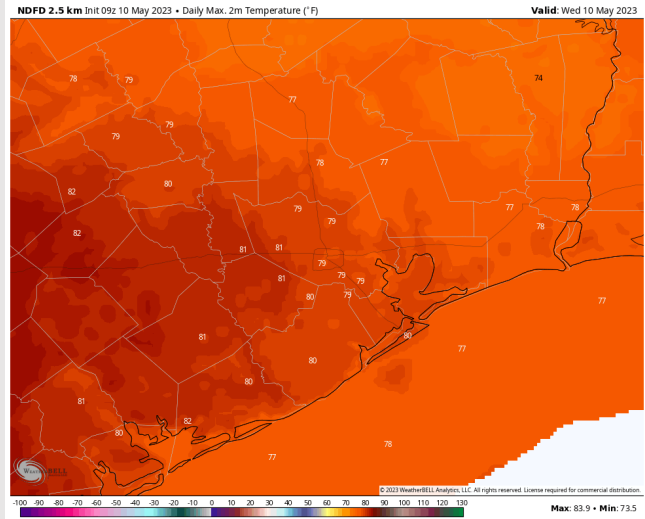
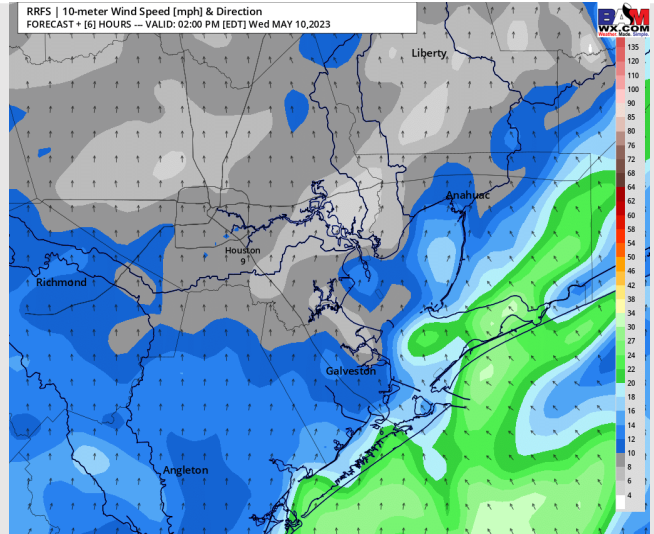
**Temps:** Low temperatures will be in the mid 70s for stations south of Morgan’s Point, and low 70s for all other stations.

**Visibility:** Not anticipating any fog concerns Wednesday, but reduced visibility within stronger scattered storms will be possible.

## Precip Image: 2 PM CT



**Wind Speed:  
1 PM CT**



**Low Temps  
Thurs AM**

# Houston Pilots: Thu. 5/11/2023



## Forecast Discussion

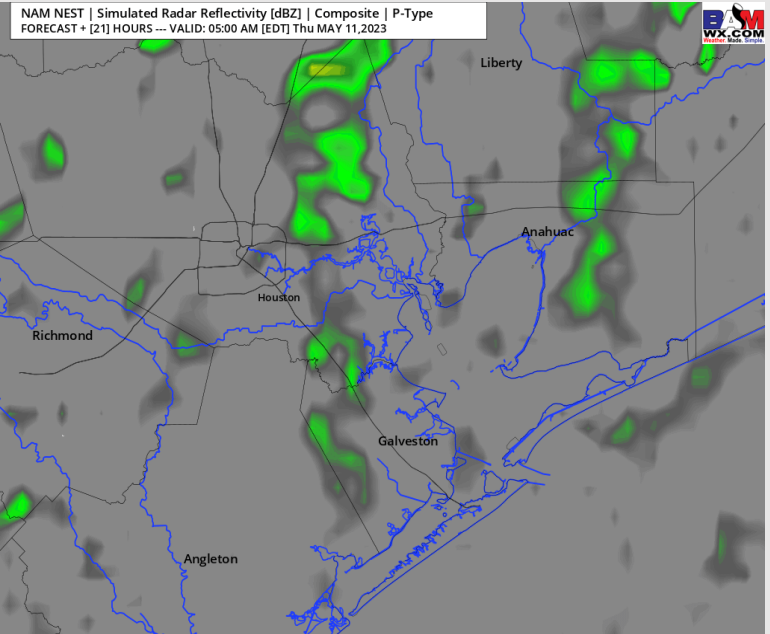
**Precip:** Scattered shower chances are possible between 3 – 7 AM though heavier rain will stay North of the Houston bay area. The best window to see heavier activity will come from 3 PM – 6 PM. Favoring rain chances to exit the area altogether by 10 PM, leaving dry conditions for the overnight. Small hail will be possible with scattered storms in the PM.

**Wind:** Favoring sustained winds from the SE on Thursday. Winds will generally be 7 -12 kts north of Morgan’s Point, and 13- 18 kts south of Morgan’s Point. During the PM hours, gusty winds from scattered thunderstorms of up to 20 - 25 kts will be possible, mainly for stations south of Morgan’s Point.

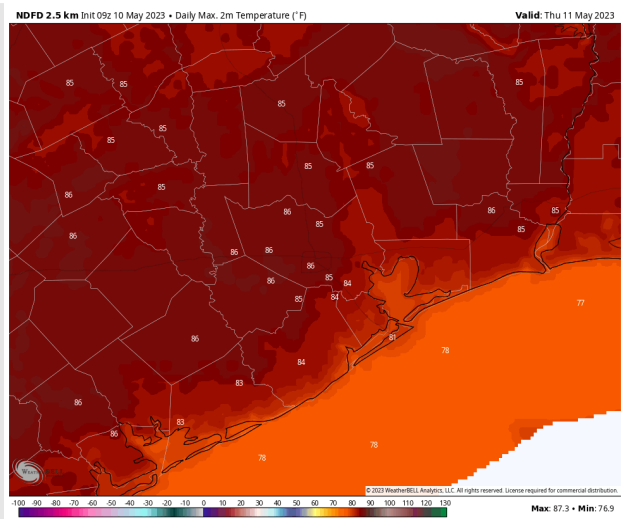
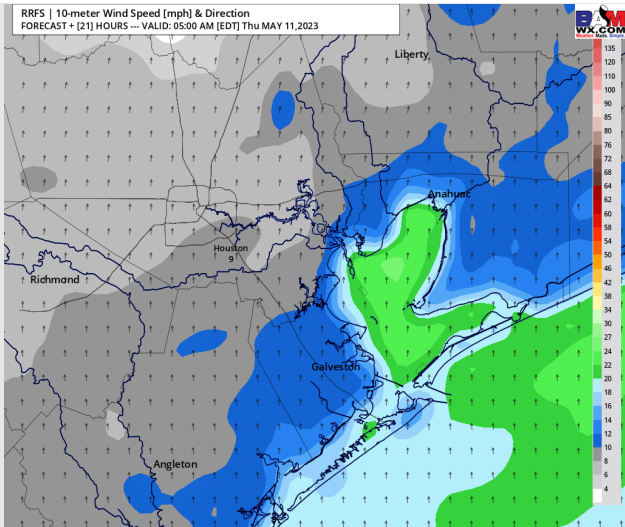
**Temps:** High temperatures Thursday will be in the mid 80s F north of Morgan’s Point, and in the lower 80s to upper 70s F south of Morgan’s Point.

**Visibility:** Not anticipating any visibility concerns at this time via fog, but reduced visibility within stronger PM storms is possible.

## Precip Image: 4 AM CT



Wind Speed:  
4 AM CT



High Temps  
Thursday

# Houston Pilots: Fri. 5/12/2023



## Forecast Discussion

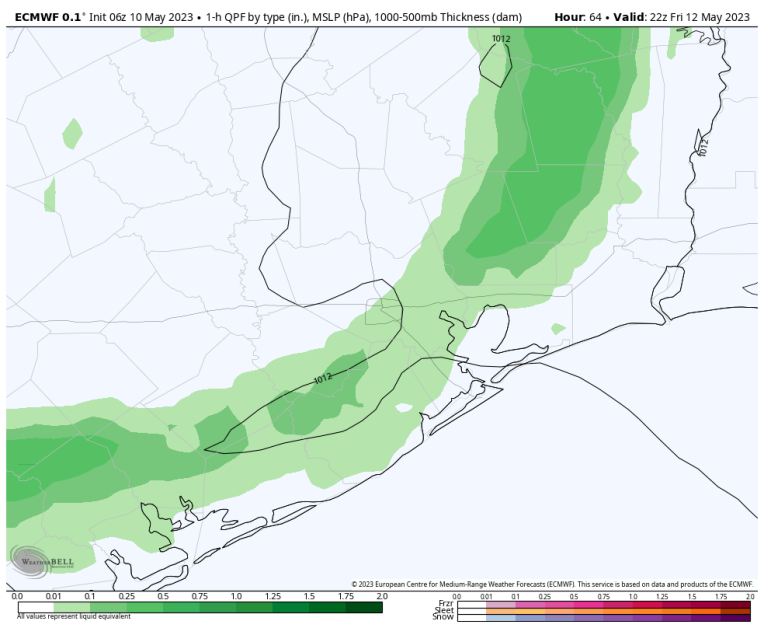
**Precip:** Favoring dry conditions throughout the morning and into the early afternoon Friday. Then favoring coverage to increase around 12 PM as a system works its way through around 5 PM local time. Then after 8 PM favoring dry conditions for the rest of the evening.

**Wind:** Sustained winds will be out of the SE throughout the day Friday. Winds N of Morgan's Point being 8-15 kts throughout the day Friday. Winds at the Boarding Station will be 18-23 kts during the early AM, then after 7 AM, favoring winds at the Boarding Station to decrease to 11-16 kts throughout the rest of the day. All other stations between the Boarding Station and Morgan's Point will see winds of 11- 16 kts throughout the day.

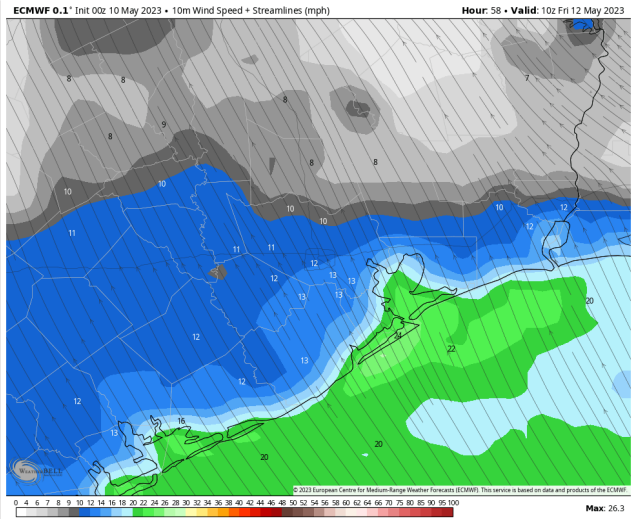
**Temps:** High temps Friday will be in the upper 70s F near the boarding station, and in the mid to upper 80s F across all other station.

**Visibility:** Not anticipating any fog concerns at this time, but reduced visibility within stronger storms is possible.

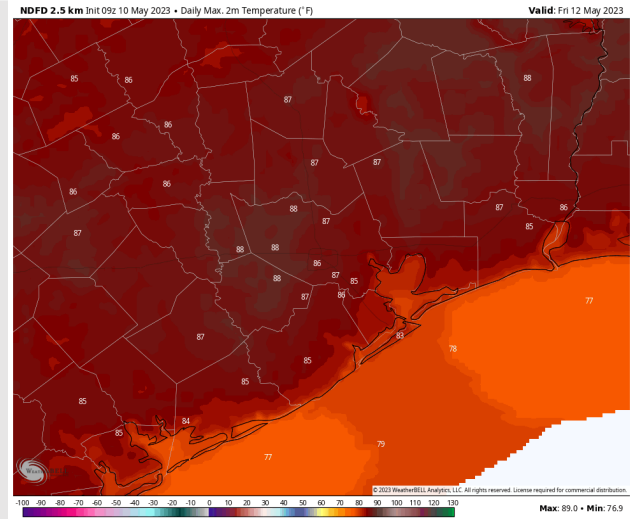
## Precip Image: 5 PM CT



**Wind Speed:  
5 AM CT**



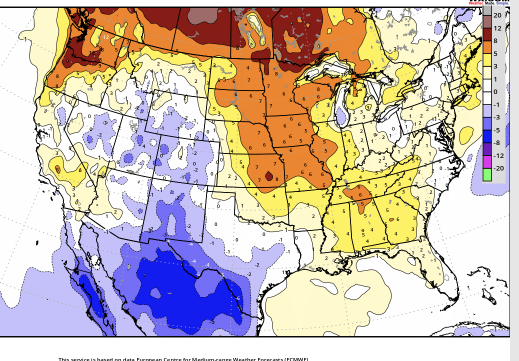
**High Temps  
Friday**



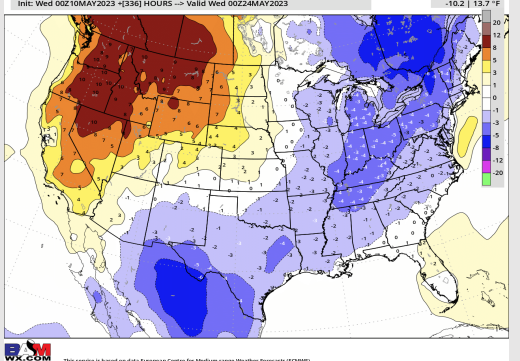


# Houston Pilots: 5/10/23

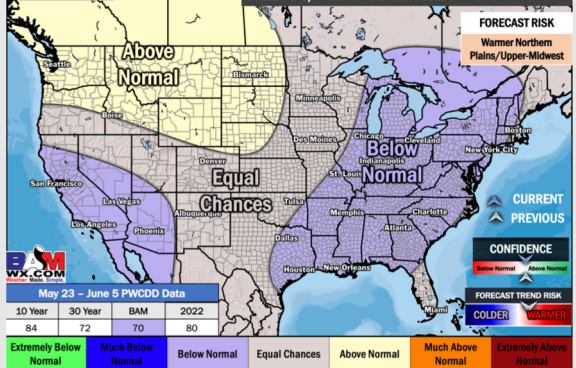
**Next 7 Day Temperature Departure**



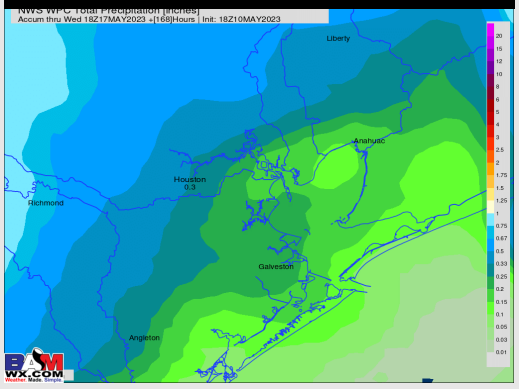
**8-14 Day Temperature Departure**



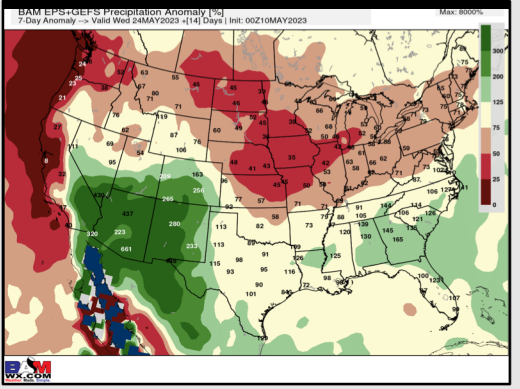
**15-30 Day Temperature Departure**



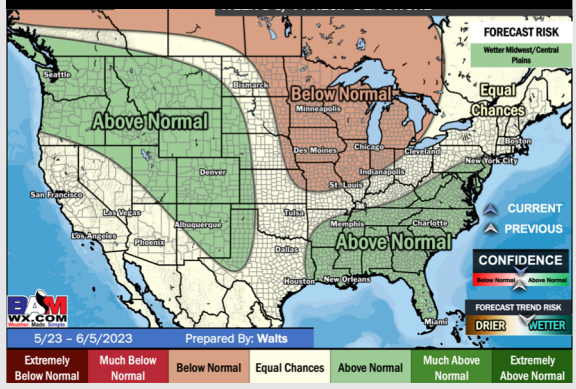
**Next 7 Day Total Precipitation**



**8-14 Day % of Average Precip.**



**15-30 Day % of Average Precip.**



- Best precip overall looks to sit further west in Central TX, with low end chances for precip over the coming days. The second half of week 1 holds the greatest rain risk. Temperatures slightly above normal for this time of year.
- Expecting near normal precipitation chances and slightly below normal temperatures for the week 2 timeframe.
- Seasonable to below normal temperatures and seasonable to slightly above normal chances for precipitation are favored in the week ¾ timeframe.