

# Houston Pilots Forecast Package

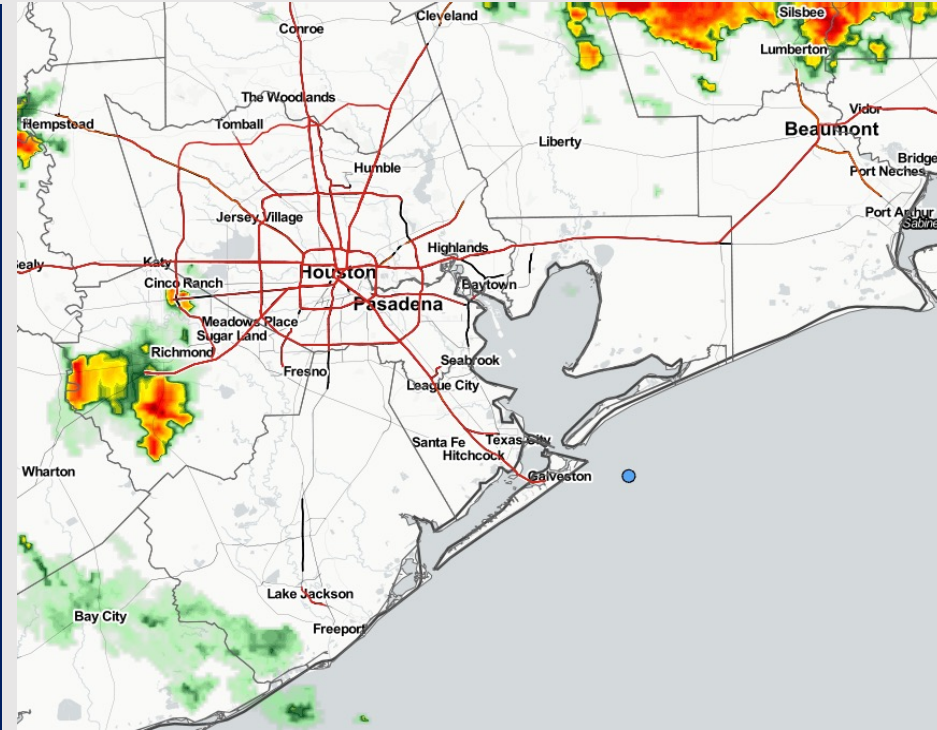


Updated: 2:20 PM CT  
Monday, May 8, 2023

Forecaster: Will Danby

## Weather Headlines

- Watching for a few rounds of showers and thunderstorms over the next few days, check the daily slides below for more info on a few severe threats to watch.
- Watching for periods of elevated winds (15 – 20 kts) on the day Wednesday.
- Threats for sea fog formation look very low with no strong signals over the next several days.



**Radar/NWS Alerts: 2:12 PM CT**



As always, please do not hesitate to reach out to us with any forecast questions via the chat option on the Weather Porthole or our on-call number, **(317)-560-8122** press 1 for forecast questions.

# Houston Pilots Extended Range Visibility Report



## Thursday 5/11/23

Reduced visibility not a concern at this time for Thursday.



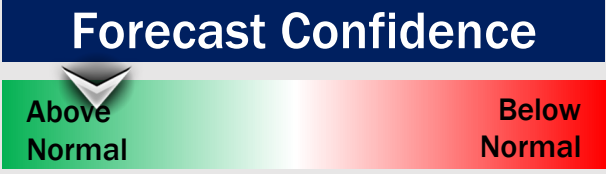
## Saturday 5/13/23

Not expecting fog risks for Saturday.



## Friday 5/12/23

Reduced visibility not a concern at this time for Friday.



## Chance for Reduced Visibility

Thursday AM	Unlikely
Thursday PM	Unlikely
Friday AM	Unlikely
Friday PM	Unlikely
Saturday AM	Unlikely
Saturday PM	Unlikely

# Houston Pilots Visibility Chart (miles)



## Forecast Confidence



Time	Mon 1pm	Mon 2pm	Mon 3pm	Mon 4pm	Mon 5pm	Mon 6pm	Mon 7pm	Mon 8pm	Mon 9pm	Mon 10pm	Mon 11pm	Tue 12am	Tue 1am	Tue 2am	Tue 3am	Tue 4am	Tue 5am	Tue 6am	Tue 7am	Tue 8am	Tue 9am	Tue 10am	Tue 11am	Tue 12pm	Tue 1pm	Tue 2pm	Tue 3pm	Tue 4pm	Tue 5pm	Tue 6pm	Tue 7pm	Tue 8pm	Tue 9pm	Tue 10pm	Tue 11pm	Wed 12am			
610 Bridge	10	10	10	10	10	9	7	6	10	10	9	7	6	6	6	5	5	5	4	4	5	6	6	5	4	3	2	2	2	2	3	3	4	8	6	6			
Kinder 1	10	10	10	10	10	9	7	6	10	10	10	7	6	6	6	5	5	5	5	5	5	5	7	7	6	6	6	5	5	5	5	5	5	5	5	8	7	7	
Greens Bayou	10	10	10	10	10	8	6	6	10	10	10	7	6	6	5	5	6	7	6	6	7	8	8	7	9	8	8	8	8	8	7	6	6	7	8	7	7		
Shell Crude	10	10	10	10	10	9	7	6	10	10	10	7	6	6	6	6	8	8	8	8	8	8	9	9	9	10	10	10	10	10	10	9	8	8	8	8	8	8	
Lynchburg Ferries	10	10	10	10	10	8	6	6	10	10	10	7	6	6	6	6	8	8	8	8	8	8	9	9	10	10	10	10	10	10	10	10	10	8	8	8	8	8	8
Exxon 3	10	10	10	10	10	9	7	6	10	10	10	8	9	6	6	6	8	8	8	8	8	8	9	9	10	10	10	10	10	10	10	10	8	8	8	8	8	8	8
Morgans Point	10	10	10	10	10	10	7	6	10	10	10	8	9	6	6	6	8	8	8	8	8	8	9	9	10	10	10	10	10	10	10	10	8	8	8	8	8	8	8
75/76	10	10	10	10	10	10	8	6	10	10	10	8	9	6	6	6	8	8	8	8	8	8	9	9	10	10	10	10	10	10	10	10	9	8	8	8	8	8	8
63/64	10	10	10	10	10	10	8	6	10	10	10	8	9	6	6	6	8	8	8	8	8	8	9	9	10	10	10	10	10	10	10	10	8	8	8	8	8	8	8
51/52	10	10	10	10	10	9	7	6	10	10	10	8	9	6	6	6	8	8	8	8	8	8	9	9	10	10	10	10	10	10	10	10	8	8	8	8	8	8	8
37/38	10	10	10	9	10	8	7	6	10	10	10	10	9	6	6	6	8	8	8	8	8	8	9	9	10	10	10	10	10	9	9	8	8	8	8	8	8	8	8
25/26	10	10	10	8	8	8	7	6	10	10	10	10	9	6	6	6	8	8	8	8	8	8	9	9	9	10	10	10	10	9	9	8	8	8	8	8	8	8	8
11/12	10	10	10	8	8	7	6	6	7	10	10	10	9	6	6	6	8	8	8	8	8	8	9	9	9	10	10	10	9	9	9	8	8	8	8	8	8	8	8
1 & 2 Bravo	10	9	8	6	6	6	5	6	7	10	8	7	7	6	6	6	8	8	8	8	8	8	9	9	9	9	9	9	9	9	9	8	8	8	8	8	8	8	8

NOTE: This is automated data that may/may not agree with the official BAM thinking that's found on the daily slides or special visibility report slides. This data should be used as a guide only

# Houston Pilots Wind Chart



**Example**

Sustained wind 13 Knots  
Gusts 18 Knots  
Wind from the N

WS: 13  
G:18  
N

Time Knots	Mon 1pm	Mon 2pm	Mon 3pm	Mon 4pm	Mon 5pm	Mon 6pm	Mon 7pm	Mon 8pm	Mon 9pm	Mon 10pm	Mon 11pm	Tue 12am	Tue 1am	Tue 2am	Tue 3am	Tue 4am	Tue 5am	Tue 6am	Tue 7am	Tue 8am	Tue 9am	Tue 10am	Tue 11am	Tue 12pm	Tue 1pm	Tue 2pm	Tue 3pm	Tue 4pm	Tue 5pm	Tue 6pm	Tue 7pm	Tue 8pm	Tue 9pm	Tue 10pm	Tue 11pm	Wed 12am	
610 Bridge	8	10	10	9	10	13	8	4	3	4	10	10	6	1	3	6	5	6	6	6	6	6	7	8	9	10	10	10	10	9	9	9	8	7	7	7	7
	15	16	16	16	18	22	17	12	11	8	20	20	15	6	3	9	8	9	9	9	9	9	10	10	12	14	14	13	14	13	13	13	12	10	10	10	10
Kinder 1	8	10	10	9	10	13	8	4	4	4	11	10	5	2	3	6	5	6	6	6	6	7	9	9	10	10	10	10	9	9	9	8	7	7	7	7	
	16	16	16	17	18	22	17	12	12	7	20	20	14	6	4	9	8	9	9	9	9	9	10	10	11	14	14	14	14	13	13	13	12	10	10	10	10
Greens Bayou	8	10	10	10	10	13	9	4	6	4	12	10	4	2	4	6	5	6	6	6	6	7	9	9	10	10	10	9	10	10	9	8	7	7	7	7	
	17	15	16	18	18	21	18	12	15	6	22	19	13	8	4	9	8	9	9	9	9	10	11	11	14	14	14	14	13	13	13	12	10	10	10	10	
Shell Crude	9	11	10	11	11	13	9	5	6	3	11	10	5	2	4	6	6	6	6	6	6	7	9	9	10	10	10	10	10	10	10	9	8	7	7	7	7
	16	16	17	19	18	20	18	14	15	6	20	20	14	9	4	9	9	9	9	10	9	10	11	11	14	14	14	14	13	13	12	10	10	10	10	11	
Lynchburg Ferries	9	11	11	11	11	11	9	6	6	3	11	9	5	2	4	7	6	6	6	7	7	7	8	9	9	10	11	11	10	10	10	8	8	7	7	7	7
	18	17	18	20	18	18	18	15	16	5	21	19	15	9	5	9	9	9	9	10	10	11	11	13	15	14	14	13	13	13	12	11	10	10	11		
Exxon 3	11	13	12	12	11	12	9	7	5	4	10	11	8	4	3	7	7	7	7	7	7	8	9	10	11	11	11	10	10	10	9	9	8	8	8	8	
	19	19	19	21	18	19	17	14	7	18	22	19	13	7	10	10	9	10	10	10	10	11	12	11	13	15	14	14	13	13	12	12	11	11	11	11	
Morgans Point	13	14	14	15	13	13	11	10	6	6	10	16	14	8	6	9	9	8	9	9	9	9	10	10	11	12	12	12	11	11	12	11	10	10	10	10	10
	18	20	20	21	19	19	19	18	13	9	16	26	24	17	12	11	11	10	11	11	11	11	12	12	12	14	15	14	13	14	13	13	13	13	12	12	12
75/76	15	16	17	17	17	18	9	19	17	10	11	13	21	23	19	12	13	12	12	12	12	12	13	13	13	14	14	13	13	14	13	14	13	14	13	13	13
	19	19	20	20	20	20	14	21	19	12	11	15	27	29	22	17	12	13	12	13	13	13	13	14	13	16	16	15	15	14	16	15	15	14	14	14	14
63/64	15	16	17	17	18	9	19	17	10	11	13	21	23	19	12	13	12	12	12	12	12	12	13	13	13	14	14	13	13	14	13	14	13	14	13	13	13
	18	18	20	20	21	10	23	19	12	12	16	26	30	27	20	13	14	13	14	13	14	13	14	14	15	16	15	15	14	15	14	15	14	14	15	15	
51/52	16	15	17	16	18	9	20	17	11	11	16	20	24	21	14	12	12	11	12	11	12	12	12	12	13	14	13	12	13	13	12	13	12	13	12	13	13
	20	17	20	19	21	10	25	20	13	13	19	26	31	29	21	13	14	13	13	13	13	13	13	13	14	15	16	14	15	14	14	13	14	14	14	15	
37/38	16	13	16	14	16	9	23	17	11	10	16	19	24	22	14	11	11	11	12	12	11	12	11	12	13	15	16	14	14	14	13	12	11	11	11	12	13
	21	17	19	17	19	10	27	20	14	13	20	27	31	31	23	13	13	13	13	13	13	13	13	13	15	16	14	14	14	13	13	13	13	13	13	14	15
25/26	15	12	14	12	14	8	19	16	10	8	14	18	22	20	14	10	10	10	11	11	11	11	11	12	12	15	12	11	11	10	10	10	11	12	12	12	
	21	17	17	16	19	10	24	21	15	11	18	27	30	30	24	12	12	13	13	12	12	12	12	13	14	14	17	14	13	13	12	12	12	12	12	13	14
11/12	16	13	12	12	14	8	16	16	10	7	13	20	22	21	16	10	10	10	10	11	11	11	11	11	12	11	14	11	11	10	10	10	10	11	12	12	
	21	18	16	16	18	10	21	21	15	10	16	27	29	30	25	13	12	13	13	12	13	12	13	14	14	16	13	13	12	12	11	12	12	12	12	13	14
1 & 2 Bravo	16	15	11	12	13	10	14	19	12	8	13	20	22	25	18	13	12	13	12	12	12	12	12	13	12	14	12	12	12	11	11	11	13	12	14	14	
	21	20	15	15	17	12	15	21	15	10	17	24	27	32	26	14	13	13	13	13	13	13	13	14	14	15	13	13	12	12	12	12	13	13	15	15	

NOTE: This is automated data that may/may not agree with the official BAM thinking that's found on the daily slides or special visibility report slides. This data should be used as a guide only



# Houston Pilots: Mon. 5/8/2023



## Forecast Discussion

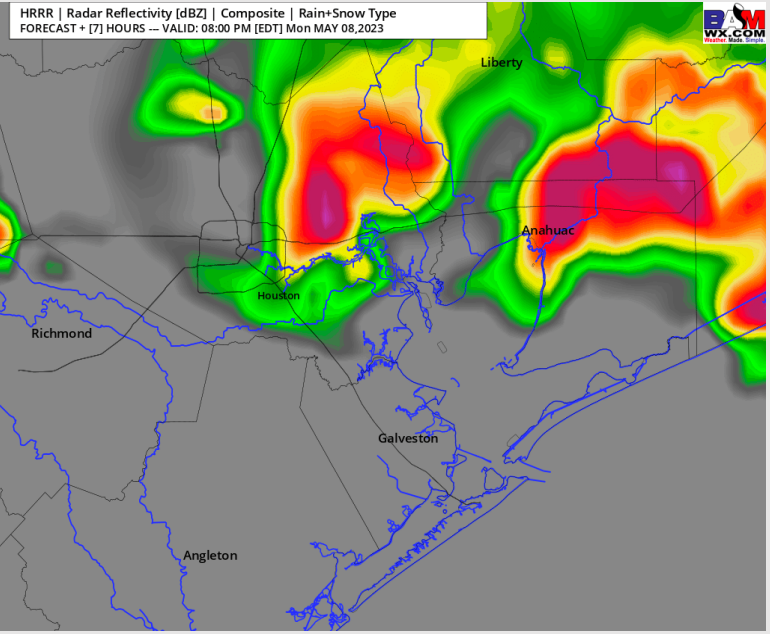
**Precip:** Favoring dry conditions through 5 PM with a 20% chance for a scattered shower or thunderstorm. After 5 PM chances will increase to 40% for stations north of 63/64. After 10 PM scattered activity will exit the area, leaving dry conditions for the early AM hours Tuesday.

**Wind:** Favoring winds to remain from the SE for the afternoon and evening hours. Winds across all stations will range at 12 – 17 kts. **After 8 PM wind gusts south of Morgan's Point can range from 22 – 26 kts.**

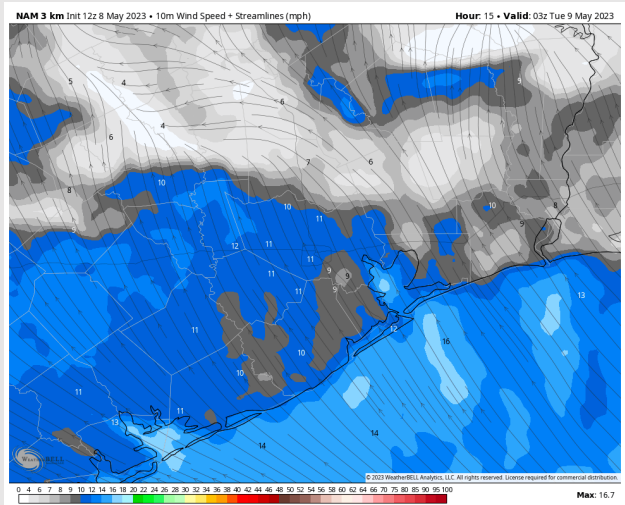
**Temps:** Low temperatures Tuesday morning across all stations will be in the mid 70s F.

**Visibility:** Not anticipating any visibility concerns at this time, **however a low cloud deck of 4-6 miles will be possible at the boarding station towards 3 AM.**

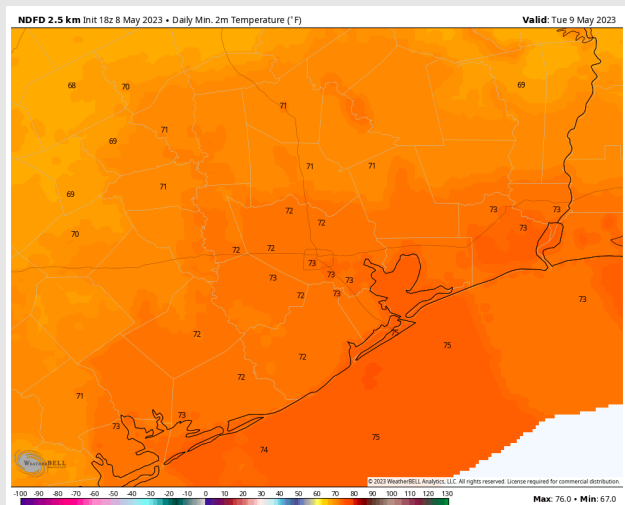
## Precip Image: 6 AM CT



**Wind Speed:  
10 PM CT**



**Low Temps  
Tuesday AM**



# Houston Pilots: Tue. 5/9/2023



## Forecast Discussion

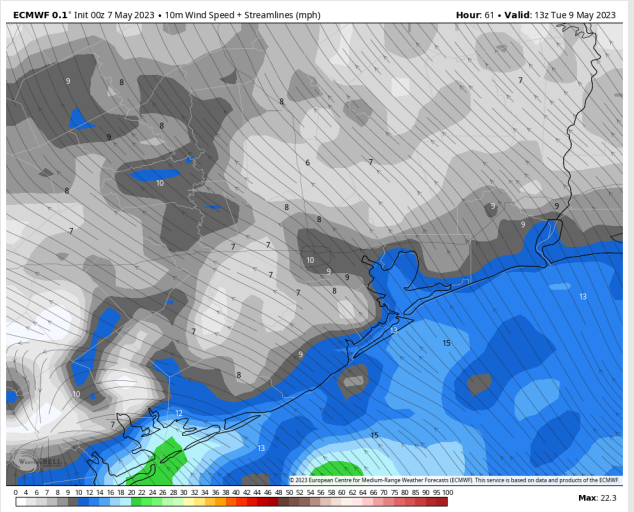
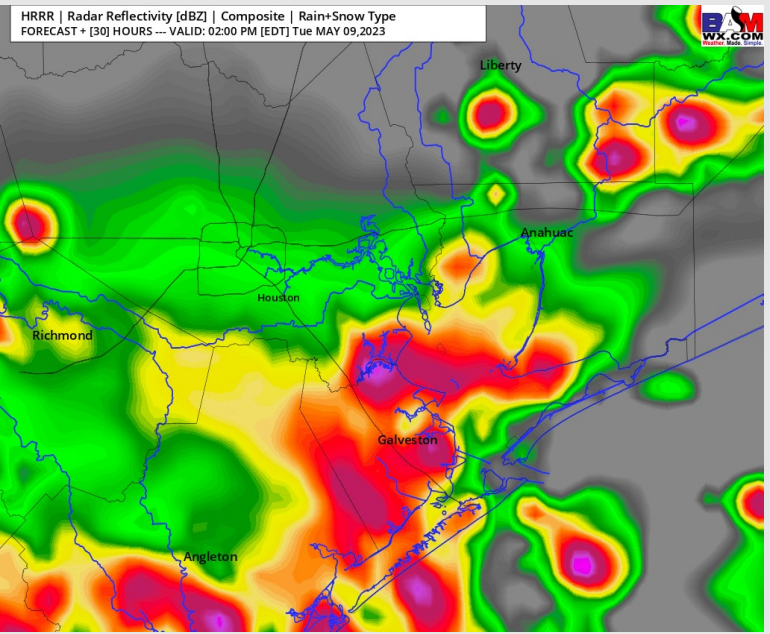
**Precip:** Isolated showers and storms will be possible in the morning on Tuesday (10-20%). Lower confidence on exact timing, but chances will become more widespread around in the early afternoon hours (~1-3 PM) timeframe and last throughout the rest of the day on Tuesday. A low-end risk for hail exists with any thunderstorms Tuesday PM.

**Wind:** Sustained winds Tuesday out of the SE at 12 - 17 kts south of Morgan's Point and 5 - 10 kts north of Morgan's Point. Winds will pick up to 15 - 20 kts in the afternoon south of Morgan's point and 7 - 12 kts north of Morgan's Point. Towards about 8 PM winds will subside slightly north of Morgan's Point to 4 - 9 kts. **Gusts Tuesday PM have potential to reach 30-35 kts under strong cells.**

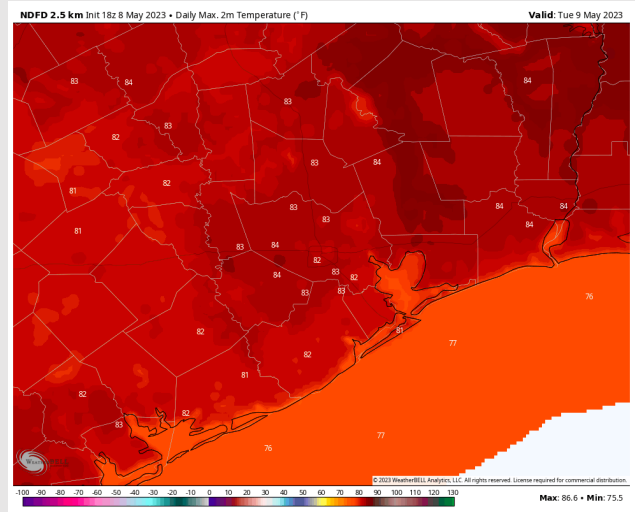
**Temps:** High temps Tuesday in the mid to upper 70s F at the Boarding Station and in the low to mid 80s F for all other stations.

**Visibility:** Not anticipating any fog concerns Tuesday, however strong storms may reduce visibility at times to 1-2 miles.

## Precip Image: 1 PM CT



**Wind Speed:  
8 AM CT**



**High Temps  
Tuesday**

## Forecast Discussion

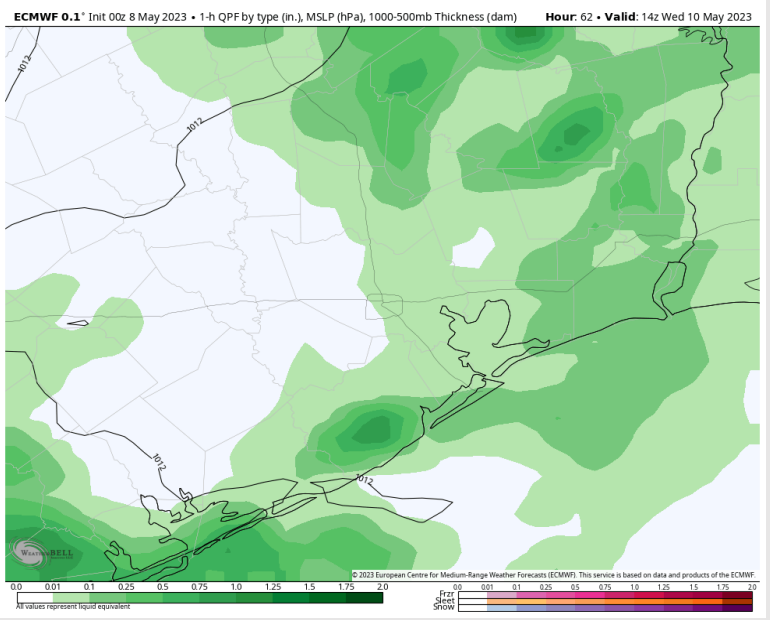
**Precip:** Some differences remain on the progression from storms later Tuesday into Wednesday, but currently favoring scattered showers and thunderstorms to work through the area in the AM hours before things turn more isolated into the afternoon hours, with better precipitation chances drifting north towards 5 PM. A locally strong to severe storm will be possible as energy moves through the area.

**Wind:** Sustained winds Wednesday will remain from the SE. Winds at the Boarding Station will sit at 16 - 21 kts sustained with gusts 20-25 knots. Winds north of the Boarding Station to Morgan's point will be 12 - 17 kts. Towards about 5 - 6 PM winds across all stations will calm to 9 - 14 kts. Locally higher gusts will be possible under any strong storms in the AM hours.

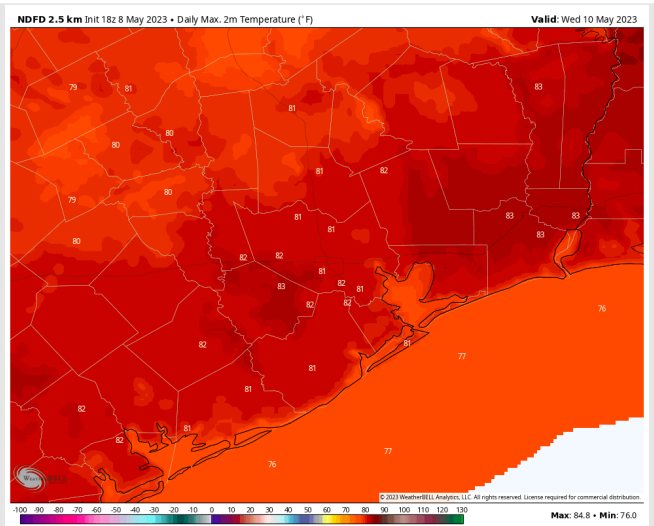
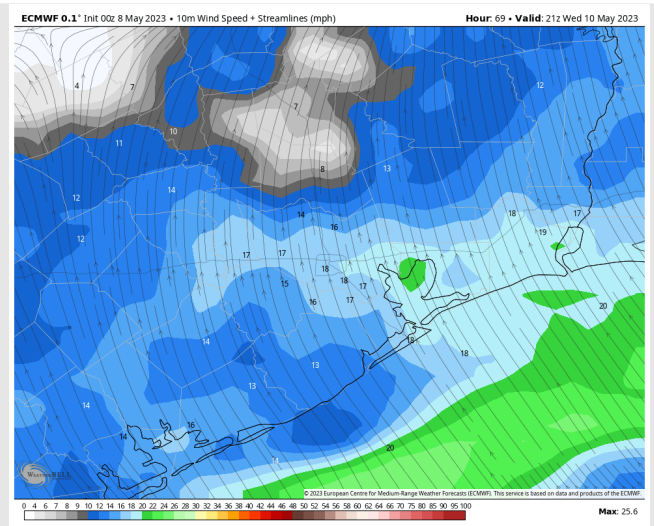
**Temps:** High temperatures Wednesday will be in the lower 80s and upper 70s F at the Boarding Station.

**Visibility:** Not anticipating any fog concerns Wednesday, but reduced visibility within stronger storms will be possible.

## Precip Image: 9 AM CT



**Wind Speed:  
4 PM CT**

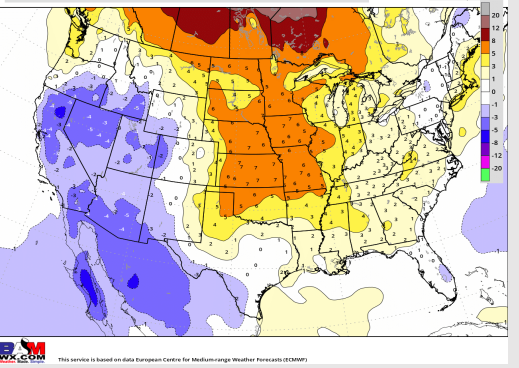


**High Temps  
Wednesday**

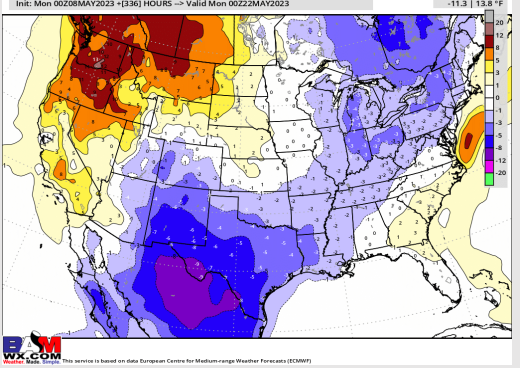


# Houston Pilots: 5/8/23

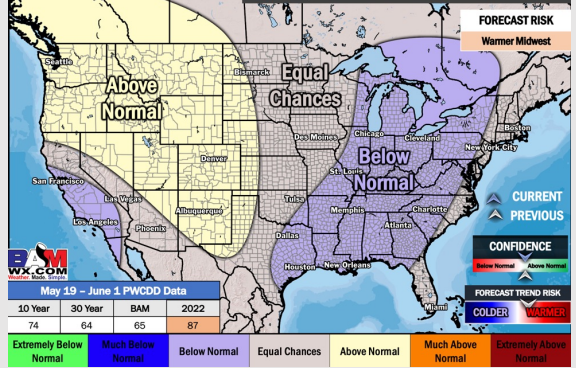
**Next 7 Day Temperature Departure**



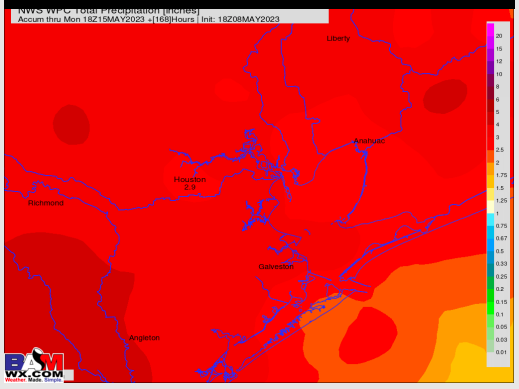
**8-14 Day Temperature Departure**



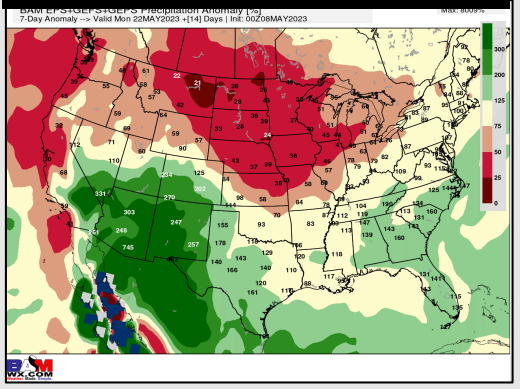
**15-30 Day Temperature Departure**



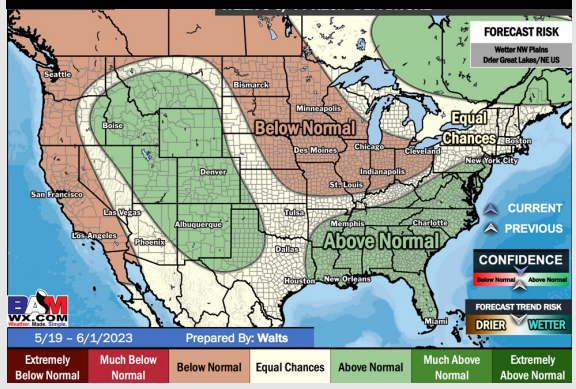
**Next 7 Day Total Precipitation**



**8-14 Day % of Average Precip.**



**15-30 Day % of Average Precip.**



- Best precip overall looks to sit further west in Central TX, with low end chances for precip over the coming days. The second half of week 1 holds the greatest rain risk. Temperatures slightly above normal for this time of year.
- Expecting near normal precipitation chances and slightly below normal temperatures for the week 2 timeframe.
- Below normal temperatures and slightly above normal chances for precipitation are favored in the week 3/4 timeframe.