

Houston Pilots Forecast Package

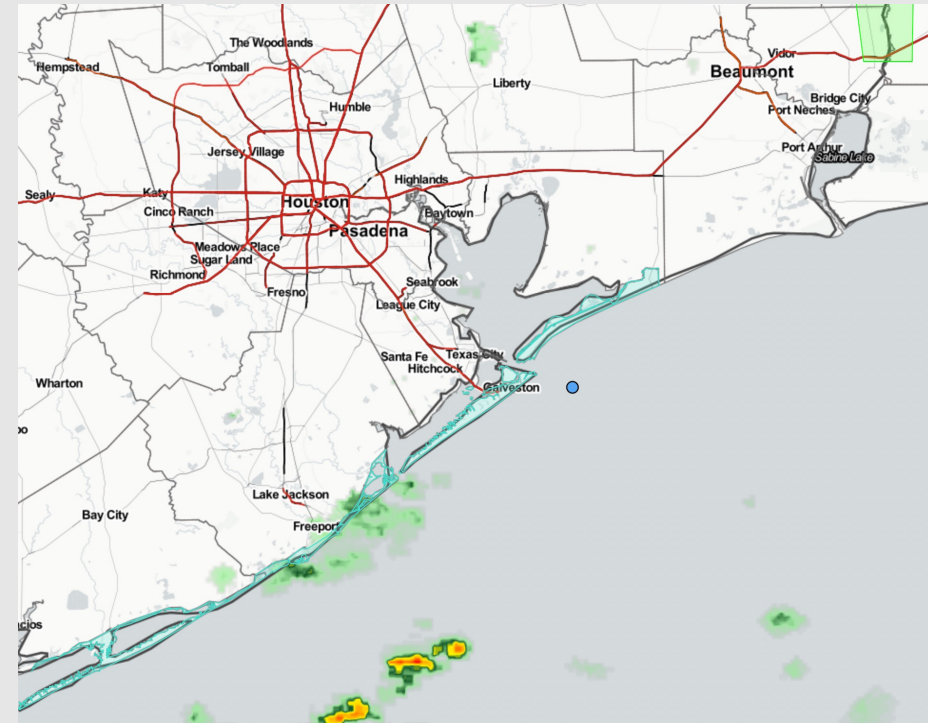


Updated: 6:15 AM CT
Monday, May 8, 2023

Forecaster: Vince Bryan

Weather Headlines

- Watching for a few rounds of showers and thunderstorms over the next few days, check the daily slides below for more info on a few severe threats to watch.
- Watching for periods of elevated winds on the day Wednesday.
- Threats for sea fog formation look very low with no strong signals over the next several days.



Radar/NWS Alerts: 6:15 AM CT



As always, please do not hesitate to reach out to us with any forecast questions via the chat option on the Weather Porthole or our on-call number, **(317)-560-8122** press 1 for forecast questions.

Houston Pilots Extended Range Visibility Report



Thursday 5/11/23

Reduced visibility not a concern at this time for Thursday.



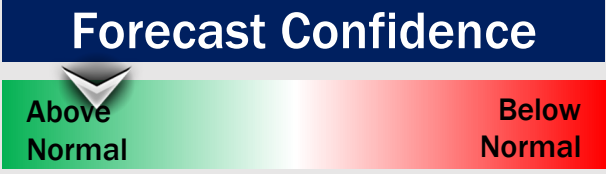
Saturday 5/13/23

Not expecting fog risks for Saturday.



Friday 5/12/23

Reduced visibility not a concern at this time for Friday.



Chance for Reduced Visibility

Thursday AM	Unlikely
Thursday PM	Unlikely
Friday AM	Unlikely
Friday PM	Unlikely
Saturday AM	Unlikely
Saturday PM	Unlikely

Houston Pilots Visibility Chart (miles)



Forecast Confidence



Time	Mon 3am	Mon 4am	Mon 5am	Mon 6am	Mon 7am	Mon 8am	Mon 9am	Mon 10am	Mon 11am	Mon 12pm	Mon 1pm	Mon 2pm	Mon 3pm	Mon 4pm	Mon 5pm	Mon 6pm	Mon 7pm	Mon 8pm	Mon 9pm	Mon 10pm	Mon 11pm	Tue 12am	Tue 1am	Tue 2am	Tue 3am	Tue 4am	Tue 5am	Tue 6am	Tue 7am	Tue 8am	Tue 9am	Tue 10am	Tue 11am	Tue 12pm	Tue 1pm	Tue 2pm		
610 Bridge	10	10	10	9	7	7	9	10	10	10	10	10	10	10	10	10	10	10	10	10	10	10	10	10	10	10	8	8	6	6	6	9	6	6	6	3		
Kinder 1	10	10	10	9	7	7	9	10	10	10	10	10	10	10	10	10	10	10	10	10	10	10	10	10	10	10	8	8	6	6	6	9	7	7	8	6		
Greens Bayou	10	10	10	9	7	7	9	10	10	10	10	10	10	10	10	10	10	10	10	10	10	10	10	10	10	10	8	8	7	7	7	9	8	8	9	8		
Shell Crude	10	10	10	10	7	7	9	10	10	10	10	10	10	10	10	10	10	10	10	10	10	10	10	10	10	10	10	8	8	8	8	8	9	9	9	10	10	
Lynchburg Ferries	10	10	10	9	7	7	9	10	10	10	10	10	10	10	10	10	10	10	10	10	10	10	10	10	10	10	10	8	8	8	8	8	9	9	9	10	10	
Exxon 3	10	10	10	10	7	7	9	10	10	10	10	10	10	10	10	10	10	10	10	10	10	10	10	10	10	10	10	8	8	8	8	8	9	9	9	10	10	
Morgans Point	10	10	10	10	7	7	9	10	10	10	10	10	10	10	10	10	10	10	10	10	10	10	10	10	10	10	10	8	8	8	8	8	9	9	9	10	10	
75/76	10	10	10	10	7	7	9	10	10	10	10	10	10	10	10	10	10	10	10	10	10	10	10	10	10	10	10	8	8	8	8	8	9	9	9	10	10	
63/64	10	10	10	10	7	7	9	10	10	10	10	10	10	10	10	10	10	10	10	10	10	10	10	10	10	10	10	8	8	8	8	8	9	9	9	10	10	
51/52	10	10	10	10	7	7	9	10	10	10	10	10	10	9	10	10	10	10	10	10	10	10	10	10	10	10	10	8	8	8	8	8	9	9	9	10	10	
37/38	10	10	10	10	7	6	8	9	10	10	10	10	9	8	10	10	10	10	10	10	10	10	10	10	10	10	10	8	8	8	8	8	9	9	9	9	10	
25/26	10	10	10	7	6	6	7	9	10	10	10	8	8	7	10	10	10	8	8	8	10	10	10	10	10	10	10	8	8	8	8	8	9	9	9	9	9	
11/12	10	9	10	7	6	6	7	9	9	10	10	8	7	6	10	10	8	8	8	8	10	10	10	10	10	10	10	8	8	8	8	8	9	9	9	9	9	
1 & 2 Bravo	9	6	6	6	6	5	6	6	6	7	6	6	6	5	5	5	8	8	8	8	8	8	9	9	8	8	8	8	8	8	8	8	8	9	9	9	9	9

NOTE: This is automated data that may/may not agree with the official BAM thinking that's found on the daily slides or special visibility report slides. This data should be used as a guide only

Houston Pilots Wind Chart



Forecast Confidence



Example

Sustained wind 13 Knots
 Gusts 18 Knots
 Wind from the N

WS: 13
 G:18
 N

Time Knots	Mon 3am	Mon 4am	Mon 5am	Mon 6am	Mon 7am	Mon 8am	Mon 9am	Mon 10am	Mon 11am	Mon 12pm	Mon 1pm	Mon 2pm	Mon 3pm	Mon 4pm	Mon 5pm	Mon 6pm	Mon 7pm	Mon 8pm	Mon 9pm	Mon 10pm	Mon 11pm	Tue 12am	Tue 1am	Tue 2am	Tue 3am	Tue 4am	Tue 5am	Tue 6am	Tue 7am	Tue 8am	Tue 9am	Tue 10am	Tue 11am	Tue 12pm	Tue 1pm	Tue 2pm		
610 Bridge	6	6	4	4	3	5	7	7	7	6	7	8	8	9	10	10	9	8	8	8	8	8	7	7	7	7	7	7	8	7	8	7	8	9	10	11		
	18	19	15	14	13	13	17	15	14	11	10	11	12	13	16	14	13	13	12	13	12	12	10	10	10	11	10	12	11	12	11	12	12	14	13	15		
	SE	SSE	S	SE	SSE	SSE	S	S	S	SSE	SSE	SSE	SSE	SSE	SE	SSE	SSE	SE	SE	SE	SE	SSE	SSE	SSE	SSE	SSE	SE	SE	SSE	SSE	SSE	S	SSE	SSE	SSE			
Kinder 1	5	6	3	4	3	5	8	7	7	6	7	8	8	9	9	11	10	8	8	8	8	7	7	7	7	7	7	8	7	8	7	8	9	10	11			
	19	19	15	15	13	13	17	15	14	12	10	11	12	13	16	14	13	12	12	13	12	12	10	10	10	11	10	12	11	12	11	12	12	14	13	15		
	SE	SSE	S	SE	SSE	SSE	S	S	S	SSE	SSE	SSE	SSE	SSE	SE	SSE	SSE	SE	SE	SE	SE	SSE	SSE	SSE	SSE	SSE	SE	SE	SSE	SSE	SSE	S	SSE	SSE	SSE			
Greens Bayou	5	7	4	4	4	5	7	8	8	6	7	8	9	9	11	11	10	8	8	8	8	7	7	7	7	7	8	7	8	7	8	9	10	10	11			
	20	20	16	15	13	13	16	15	15	12	10	11	12	14	17	14	13	12	12	13	12	12	10	10	10	11	10	12	11	12	11	12	13	14	15			
	SSE	SSE	S	SE	SSE	SSE	S	S	S	S	SSE	SSE	SSE	SSE	SE	SSE	SSE	SE	SE	SE	SE	SSE	SSE	SSE	SSE	SSE	SE	SE	SSE	SSE	SSE	SSE	SSE	SSE	SSE			
Shell Crude	6	7	5	5	5	6	7	7	8	6	7	8	9	10	11	11	10	8	8	8	8	7	7	7	7	7	8	7	8	8	8	9	10	10	11			
	21	20	16	15	14	13	16	15	15	12	10	11	13	14	17	14	13	12	12	13	12	12	11	10	11	11	12	11	12	11	12	14	14	16				
	SSE	SSE	SSE	SSE	SSE	SSE	SSE	S	S	S	SSE	SSE	SSE	SSE	SSE	SSE	SSE	SE	SE	SE	SE	SSE	SSE	S	SSE	SSE	SE	SE	SSE	SSE	SSE	SSE	SSE	SSE	SSE			
Lynchburg Ferries	7	8	6	5	5	6	8	8	8	7	7	8	10	11	11	11	9	9	9	9	9	9	9	7	8	7	8	8	8	8	9	10	10	11	11			
	21	21	17	15	15	14	16	16	15	12	10	11	13	16	17	14	13	12	12	13	12	12	11	11	11	11	11	11	11	12	11	12	13	14	16			
	SE	SSE	SSE	SSE	SSE	SSE	SSE	SSE	S	S	SSE	SSE	SSE	SE	SSE	SSE	SSE	SE	SE	SE	SE	SE	SSE	SSE	S	SSE	SE	SE	SE	SE	SE	SE	SE	SE	SE			
Exxon 3	10	9	9	6	7	7	8	8	8	8	6	8	11	11	11	11	10	9	9	9	9	9	8	8	8	8	8	9	8	9	9	9	10	11	11			
	22	21	19	15	15	14	18	16	15	13	11	11	15	16	18	15	14	13	13	13	13	13	13	11	11	11	11	12	12	12	12	13	14	15	15			
	SE	SSE	SSE	SSE	SSE	SSE	SSE	SSE	S	S	SSE	SSE	SSE	SSE	SSE	SSE	SSE	SE	SE	SE	SE	SSE	SSE	SSE	SSE	S	SSE	SE	SE	SSE	SSE	SSE	SSE	SSE	SSE			
Morgans Point	13	13	12	10	10	9	10	10	10	10	7	8	13	13	13	13	11	11	11	11	11	11	11	10	10	10	10	10	10	10	10	10	12	11	12			
	22	23	20	16	15	15	18	16	16	14	12	11	17	16	18	16	15	14	14	14	14	14	14	13	12	12	12	13	13	13	13	13	13	14	15	16		
	SE	SE	SSE	SSE	SSE	S	S	SSE	S	S	S	SSE	SSE	SSE	SSE	SSE	SSE	SE	SE	SE	SE	SSE	SSE	SSE	SSE	S	SSE	SSE	SE	SE	SSE	SSE	SSE	SSE	SSE	SSE		
75/76	17	19	15	13	13	11	12	13	13	11	9	11	15	13	15	16	15	14	14	14	14	14	14	13	12	13	13	13	14	13	14	13	12	14	12	13		
	22	25	21	17	16	16	17	18	18	16	13	13	17	16	17	18	17	16	16	15	16	15	14	14	14	14	14	15	15	15	15	15	14	14	15	16	17	
	SE	SE	SSE	SSE	SSE	S	S	SSE	S	S	S	SSE	SSE	SSE	SSE	SSE	SSE	SE	SE	SE	SE	SSE	SSE	SSE	S	SSE	SSE	SSE	SSE	SSE	SSE	SSE	SSE	SSE	SSE	SSE		
63/64	16	20	17	14	13	12	13	13	14	12	10	11	14	14	14	16	15	15	15	14	15	14	15	14	13	13	13	14	15	14	14	13	13	13	14	13	13	
	21	24	22	18	17	17	17	18	18	17	13	14	17	16	16	18	17	16	16	15	16	15	14	14	14	14	14	15	16	15	16	15	14	15	15	16	17	
	SE	SE	SSE	SSE	SSE	S	S	SSE	S	S	S	S	SSE	SSE	SSE	SSE	SSE	SE	SE	SE	SE	SSE	SSE	SSE	SSE	S	SSE	SSE	SSE	SSE	SSE	SSE	SSE	SSE	SSE	SSE		
51/52	15	19	18	15	14	13	14	14	14	13	11	12	14	14	12	15	14	14	13	13	14	14	12	12	13	13	13	14	13	14	13	14	13	12	13	13	13	
	19	23	23	19	17	18	18	18	17	17	13	15	16	15	14	17	15	15	15	15	15	15	15	14	13	14	14	15	16	15	15	14	14	14	15	16	17	
	SE	SE	SSE	SSE	SSE	S	S	SSE	S	S	S	S	SSE	SSE	SSE	SSE	SE	SE	SE	SE	SSE	SSE	SSE	SSE	SSE	S	SSE	SSE	SSE	SSE	SSE	SSE	SSE	SSE	SSE	SSE	SSE	
37/38	13	17	17	15	13	13	14	14	13	13	11	12	13	14	12	14	13	12	12	12	12	13	13	12	11	12	12	13	14	13	13	12	12	12	12	12	12	
	18	21	22	20	18	18	18	19	17	17	14	15	15	16	14	15	14	13	12	13	13	14	13	13	13	13	14	15	15	14	14	13	12	12	13	14	15	15
	SE	SE	SE	SSE	SSE	S	S	SSE	S	S	S	S	SSE	SSE	SSE	SSE	SE	SE	SE	SE	SSE	SSE	SSE	SSE	S	SSE	SSE	SSE	SSE	SSE	SSE	SSE	SSE	SSE	SSE	SSE	SSE	
25/26	11	14	14	15	13	12	13	13	12	12	11	12	12	13	12	12	11	10	10	11	12	12	11	11	11	11	11	11	12	12	12	11	11	11	11	11	11	
	16	20	21	15	18	18	18	19	17	16	15	15	15	15	14	13	12	12	12	13	13	13	12	13	12	13	12	13	15	16	14	14	13	13	13	13	14	
	SE	SE	SE	SSE	SSE	S	S	SSE	S	S	S	S	SSE	SSE	SSE	SSE	SE	SE	SE	SE	SE	SE	SE	SSE	SSE	SSE	S	SSE	SSE	SSE	SSE	SSE	SSE	SSE	SSE	SSE	SSE	
11/12	11	14	15	16	14	13	14	13	13	12	12	12	12	12	12	11	11	10	11	11	11	11	11	11	11	11	11	11	12	12	12	11	11	11	11	11	11	
	16	19	20	22	19	19	19	19	18	16	16	16	15	15	15	14	13	12	12	13	13	13	13	13	13	12	13	15	16	14	14	13	13	13	13	13	13	
	SE	SE	SE	SSE	SSE	S	S	SSE	S	S	S	S	SSE	SSE	SSE	SE	SE	SE	SE	SE	SE	SE	SE	SSE	SSE	SSE	S	SSE	SSE	SSE	SSE	SSE	SSE	SSE	SSE	SSE	SSE	
1 & 2 Bravo	12	15	16	17	17	16	16	14	15	13	13	12	11	10	11	12	12	12	12	13	13	13	13	13	13	13	13	14	15	14	13	12	12	12	10	11		
	15	18	20	21	21	21	20	18	19	16	17	15	14	13	13	13	13	13	13	13	14	14	14	14	14	13	14	15	14	15	15	14	13	13	12	12		
	SE	SE	SE	SSE	SSE	SSE	S	SSE	S	S	S	S	S	S	SE	SSE	SE	SE	SE	SE	SE	SE	SE	SE	SE	SSE	SSE	SSE	SSE	SSE	SSE	SSE	SSE	SSE	SSE	SSE	SSE	

NOTE: This is automated data that may/may not agree with the official BAM thinking that's found on the daily slides or special visibility report slides. This data should be used as a guide only

Houston Pilots: Mon. 5/8/2023



Forecast Discussion

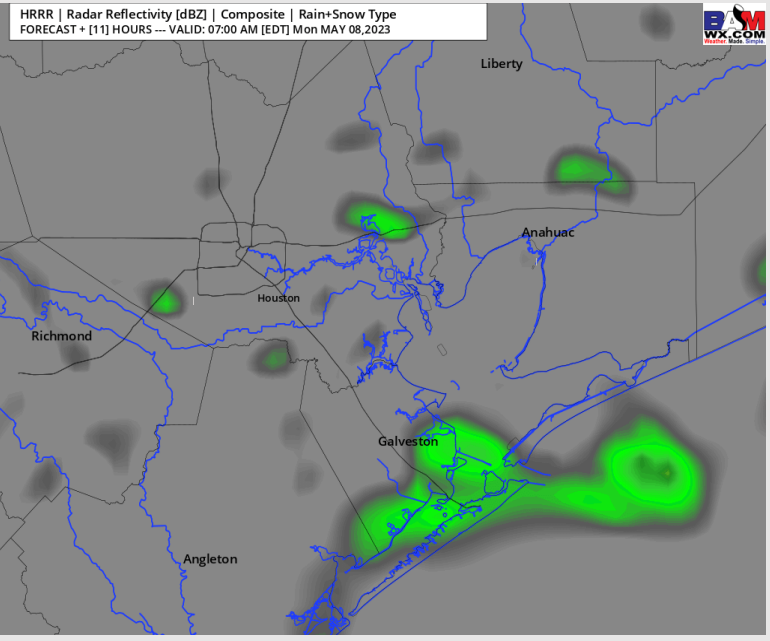
Precip: Hit and miss showers and storms will be possible through 11 AM. After 11 AM, coverage will decrease to a few sporadic chances (10-20%) throughout the rest of the day, but favoring mainly dry conditions.

Wind: Winds will be out of the SE throughout the day. Winds N of Morgan's Point will start off at 3-8 kts before increasing to 8-13 kts by 8 AM for the rest of the day. Winds S of Morgan's point will start off at 12-17 kts, then increase to 15-20 kts by 8 AM. Winds will then decrease back down to 12-17 kts by 3 PM and last the rest of the day (with gusts 17-22 knots possible at the boarding station).

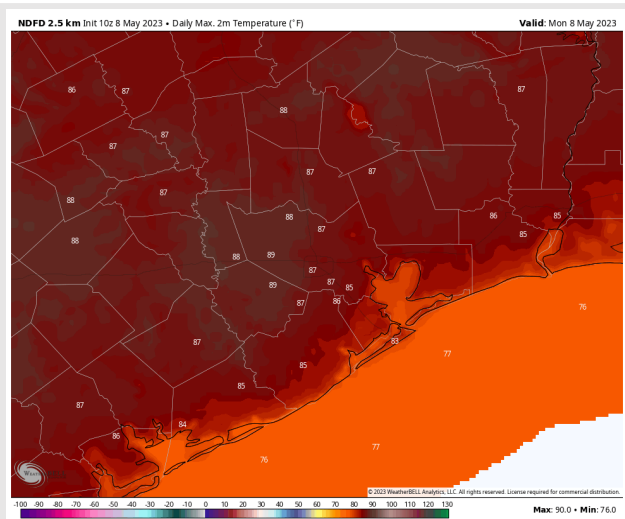
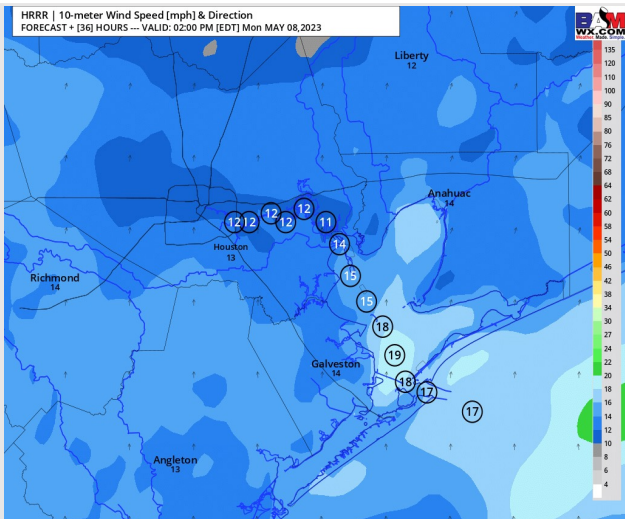
Temps: High temperatures are in the upper 70s F for stations South of Morgan's Point and in the mid 80s F for stations N of Morgan's Point.

Visibility: Not anticipating any visibility concerns at this time, **however a low cloud deck of 4-6 miles will be possible at the boarding station.**

Precip Image: 6 AM CT



**Wind Speed:
1 PM CT**



**High Temps
Today**

Houston Pilots: Tue. 5/9/2023



Forecast Discussion

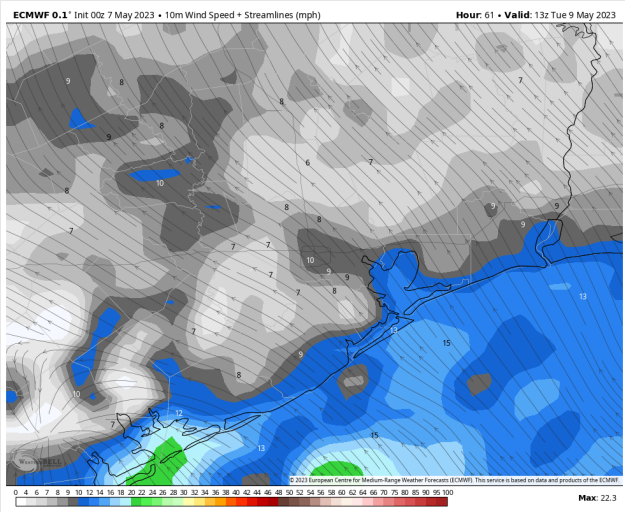
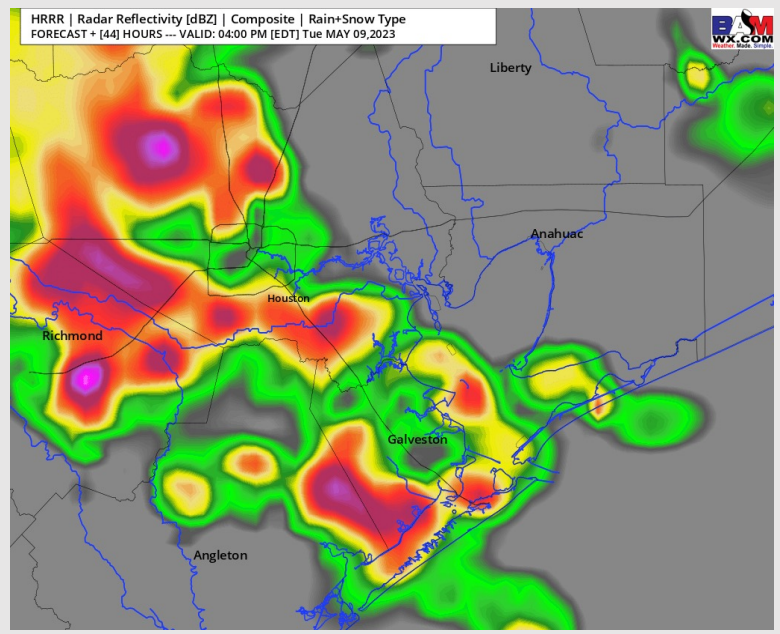
Precip: Isolated showers and storms will be possible in the morning on Tuesday. Lower confidence on exact timing, but hances will become more widespread around in the early afternoon hours (~1-3 PM) timeframe and last throughout the rest of the day on Tuesday. A low end risk for hail exists with any thunderstorms Tuesday PM.

Wind: Sustained winds Tuesday out of the SE at 12 – 17 kts south of Morgan’s Point and 5 – 10 kts north of Morgan’s Point. Winds will pick up to 15 - 20 kts in the afternoon south of Morgan’s point. **Gusts Tuesday PM have potential to reach 30-35 kts under strong cells.**

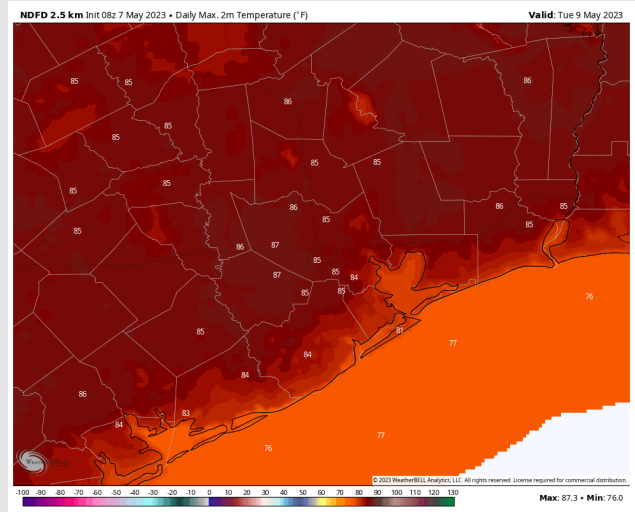
Temps: High temps Tuesday in the mid to upper 70s F at the Boarding Station and in the mid 80s F for all other stations.

Visibility: Not anticipating any fog concerns Tuesday, however strong storms may reduce visibility at times to 1-2 miles.

Precip Image: 1 PM CT



Wind Speed:
8 AM CT



High Temps
Tuesday

Forecast Discussion

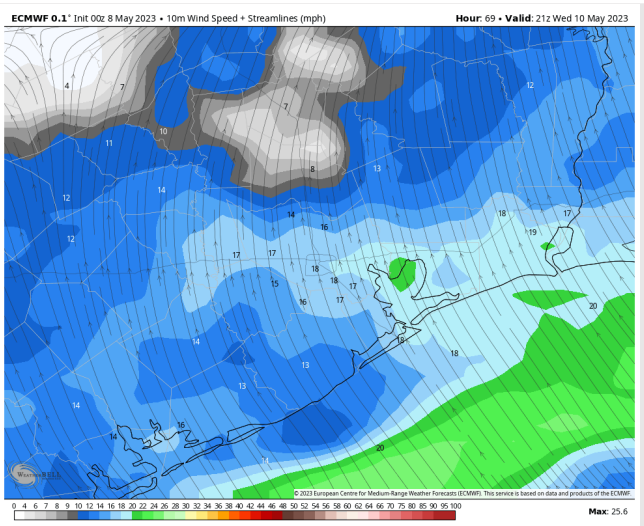
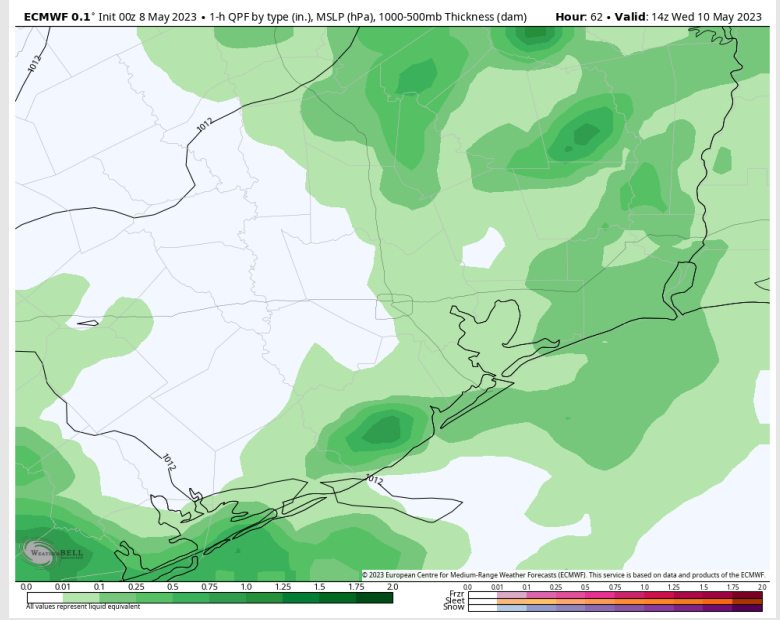
Precip: Some differences remain on the progression from storms later Tuesday into Wednesday, but currently favoring scattered showers and thunderstorms to work through the area in the AM hours before things turn more isolated into the afternoon hours. A locally strong to severe storm will be possible as energy moves through the area.

Wind: Sustained winds Wednesday at the boarding station will sit 15-20 knots sustained with gusts 20-25 knots. Locally higher gusts will be possible under any strong storms in the AM hours.

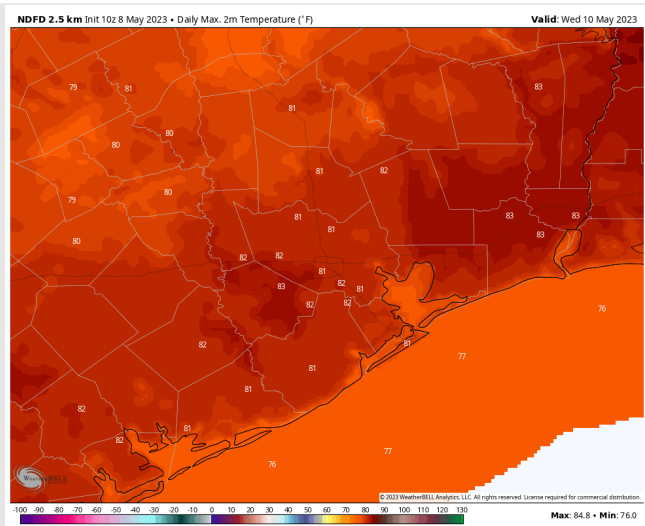
Temps: High temperatures Wednesday will be in the lower 80s.

Visibility: Not anticipating any fog concerns Wednesday, but reduced visibility within stronger storms will be possible.

Precip Image: 9 AM CT



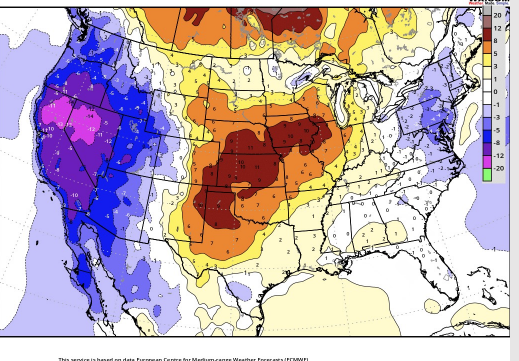
**Wind Speed:
4 PM CT**



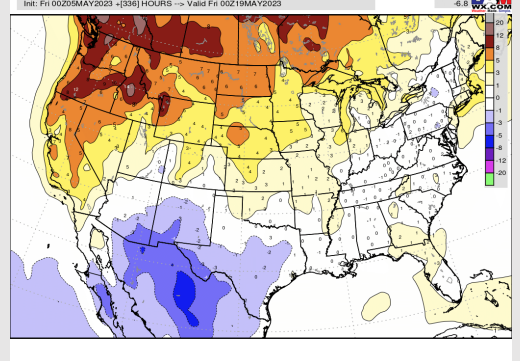
**High Temps
Wednesday**

Houston Pilots: 5/8/23

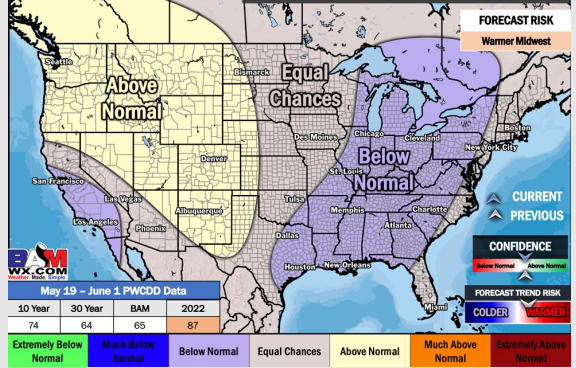
Next 7 Day Temperature Departure



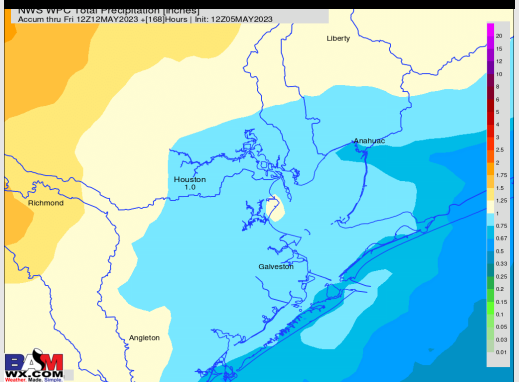
8-14 Day Temperature Departure



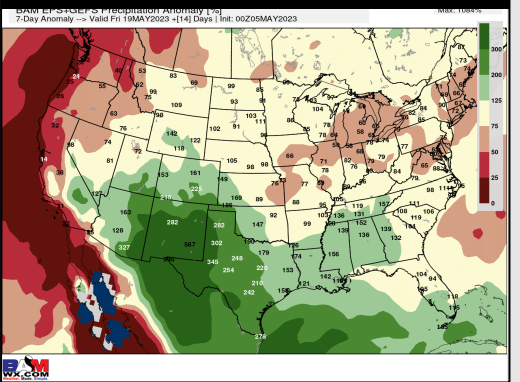
15-30 Day Temperature Departure



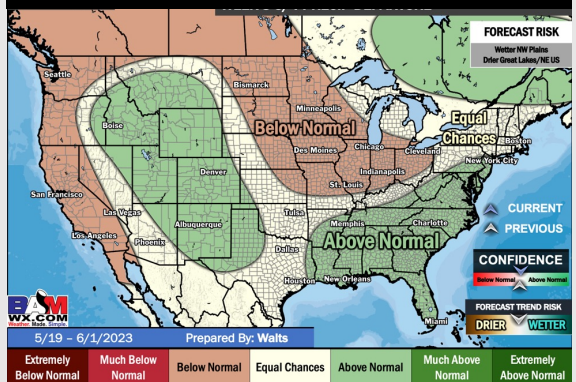
Next 7 Day Total Precipitation



8-14 Day % of Average Precip.



15-30 Day % of Average Precip.



- Best precip overall looks to sit further west in Central TX, with low end chances for precip over the coming 7 days. The second half of week 1 holds the greatest rain risk. Temperatures slightly above normal for this time of year.
- Expecting above normal precipitation chances and near normal temperatures for the week 2 timeframe.
- Below normal temperatures and above normal chances for precipitation are favored in the week 3/4 timeframe.