

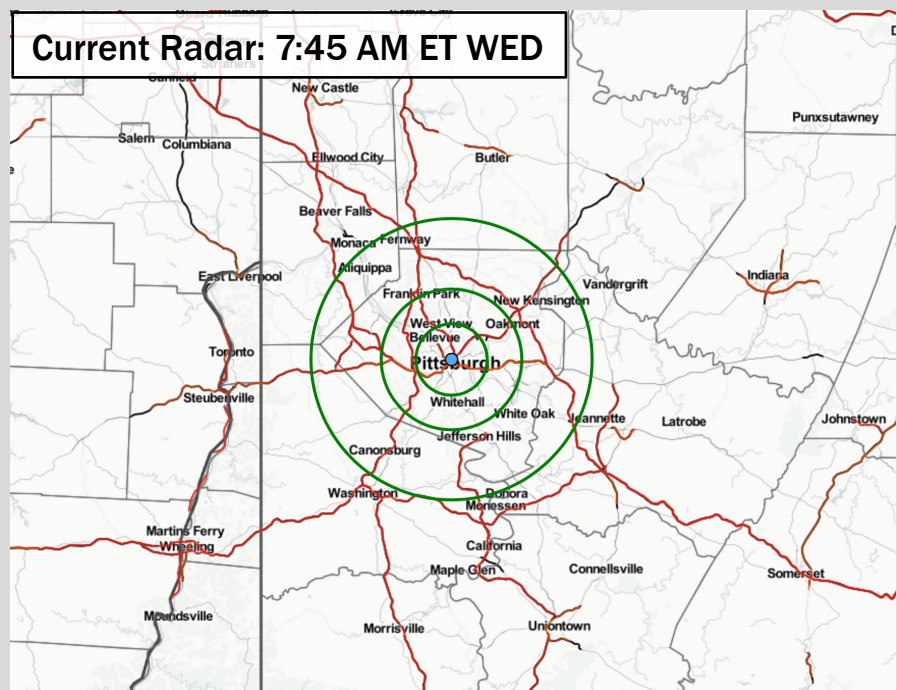


## HOUR BY HOUR FORECAST:

Time	Wed 5th 9am	Wed 5th 10am	Wed 5th 11am	Wed 5th 12pm	Wed 5th 1pm	Wed 5th 2pm	Wed 5th 3pm	Wed 5th 4pm	Wed 5th 5pm	Wed 5th 6pm	Wed 5th 7pm	Wed 5th 8pm	Wed 5th 9pm	Wed 5th 10pm	Wed 5th 11pm	Thu 6th 12am	Thu 6th 1am
Cloud %	59%	68%	74%	79%	83%	80%	75%	66%	60%	59%	60%	62%	62%	70%	71%	71%	70%
Pop %	0%	20%	0%	0%	20%	20%	0%	0%	0%	0%	0%	40%	40%	50%	40%	30%	40%
Precipitation Accumulative	0	0.01	0.01	0.01	0.02	0.05	0.05	0.05	0.05	0.05	0.05	0.07	0.08	0.16	0.21	0.22	0.26
Temperature	68°	73°	78°	81°	83°	84°	86°	87°	87°	84°	82°	68°	66°	71°	70°	68°	67°
Wind	8 20	12 28	15 30	16 28	16 27	17 28	19 31	18 33	20 35	15 32	14 29	25 48	10 26	15 22	15 22	15 22	16 24
Visibility	10 mi	10 mi	10 mi	10 mi	10 mi	10 mi	10 mi	10 mi	10 mi	10 mi	10 mi	10 mi	10 mi	10 mi	10 mi	10 mi	10 mi

## Hazardous Weather Alerts:

No Current Alerts



## IMPORTANT FORECAST NOTES (as of 8 AM ET, 4/5/23):

- ✓ Isolated risk of a shower between 10AM – 2 PM, although best coverage looks to stay North of the area and would favor drier weather for the Pittsburgh area.
- ✓ Cannot rule out ~30% chances at 6-7 PM if line currently in IL speeds up, but after ~8 PM is when the best risks will be present in E. PA for a broken line of strong to severe storms. Between 8-10 PM, all modes of severe weather (lightning/hail/gusty winds/iso tornado) will be on the table.
- ✓ Current expectation is 0.1 – 0.4” of rain over the next 24 hours.