

# Houston Pilots Forecast Package

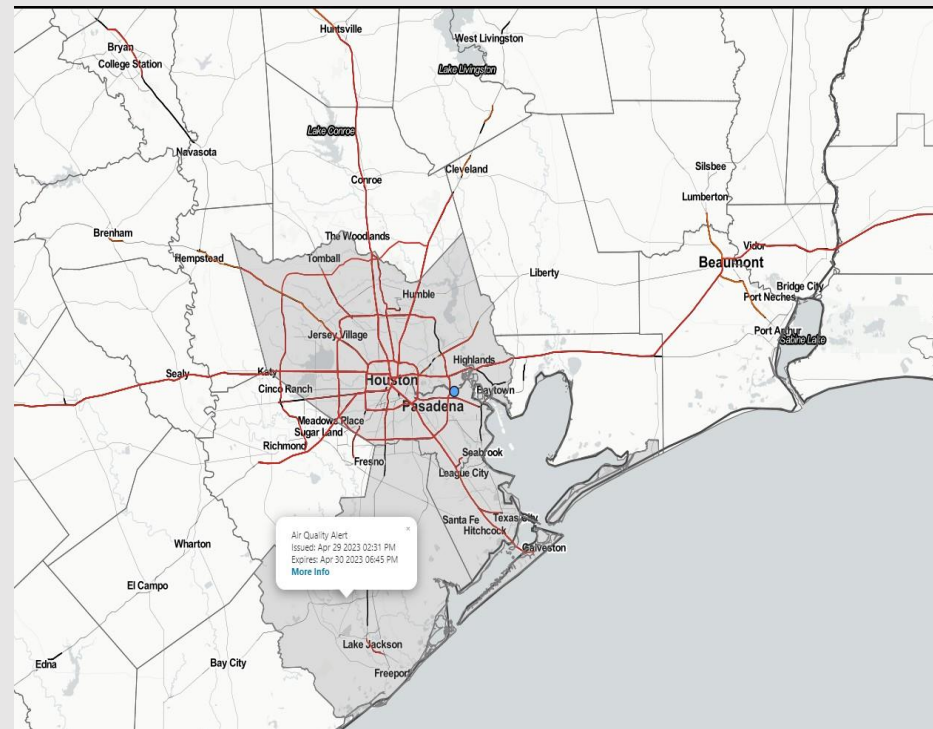


Updated: 4:45 AM CT  
Sunday, April 30, 2023

Forecaster: Jonathan Kipper

## Weather Headlines

- Favoring a drier week ahead.
- Winds will be generally calm over the next few days with occasional gusts up to 20-25 kts.
- Threats for sea fog formation look very low with no strong signals over the next several days.



**Radar/NWS Alerts: 4:45 AM CT**



As always, please do not hesitate to reach out to us with any forecast questions via the chat option on the Weather Porthole or our on-call number, **(317)-560-8122** press 1 for forecast questions.

# Houston Pilots Extended Range Visibility Report



## Wednesday 5/3/23

Reduced visibility does not look to be a concern for Wednesday.

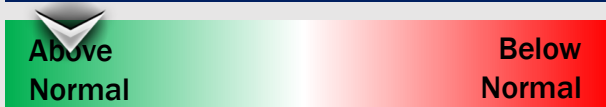
### Forecast Confidence



## Friday 5/5/23

Reduced visibility does not look to be a concern for Friday.

### Forecast Confidence



## Thursday 5/4/23

Reduced visibility does not look to be a concern for Thursday.

### Forecast Confidence



## Chance for Reduced Visibility

Wednesday AM	Unlikely
Wednesday PM	Unlikely
Thursday AM	Unlikely
Thursday PM	Unlikely
Friday AM	Unlikely
Friday PM	Unlikely

# Houston Pilots Visibility Chart (miles)



Time	Sun 3am	Sun 4am	Sun 5am	Sun 6am	Sun 7am	Sun 8am	Sun 9am	Sun 10am	Sun 11am	Sun 12pm	Sun 1pm	Sun 2pm	Sun 3pm	Sun 4pm	Sun 5pm	Sun 6pm	Sun 7pm	Sun 8pm	Sun 9pm	Sun 10pm	Sun 11pm	Mon 12am	Mon 1am	Mon 2am	Mon 3am	Mon 4am	Mon 5am	Mon 6am	Mon 7am	Mon 8am	Mon 9am	Mon 10am	Mon 11am	Mon 12pm	Mon 1pm	Mon 2pm
610 Bridge	10	10	10	10	10	10	10	10	10	10	10	10	10	10	10	10	10	10	10	10	10	10	10	10	10	10	10	10	7	6	10	10	10	10	10	10
Kinder 1	10	10	10	10	10	10	10	10	10	10	10	10	10	10	10	10	10	10	10	10	10	10	10	10	10	10	10	10	8	8	10	10	10	10	10	10
Greens Bayou	10	10	10	10	10	10	10	10	10	10	10	10	10	10	10	10	10	10	10	10	10	10	10	10	10	10	10	10	8	9	10	10	10	10	10	10
Shell Crude	10	10	10	10	10	10	10	10	10	10	10	10	10	10	10	10	10	10	10	10	10	10	10	10	10	10	10	10	8	9	10	10	10	10	10	10
Lynchburg Ferries	10	10	10	10	10	10	10	10	10	10	10	10	10	10	10	10	10	10	10	10	10	10	10	10	10	10	10	10	8	10	10	10	10	10	10	10
Exxon 3	10	10	10	10	10	10	10	10	10	10	10	10	10	10	10	10	10	10	10	10	10	10	10	10	10	10	10	10	8	10	10	10	10	10	10	10
Morgans Point	10	10	10	10	10	10	10	10	10	10	10	10	10	10	10	10	10	10	10	10	10	10	10	10	10	10	10	10	8	10	10	10	10	10	10	10
75/76	10	10	10	10	10	10	10	10	10	10	10	10	10	10	10	10	10	10	10	10	10	10	10	10	10	10	10	10	10	10	10	10	10	10	10	10
63/64	10	10	10	10	10	10	10	10	10	10	10	10	10	10	10	10	10	10	10	10	10	10	10	10	10	10	10	10	10	10	10	10	10	10	10	10
51/52	10	10	10	10	10	10	10	10	10	10	10	10	10	10	10	10	10	10	10	10	10	10	10	10	10	10	10	10	10	10	10	10	10	10	10	10
37/38	10	10	10	10	10	10	10	10	10	10	10	10	10	10	10	10	10	10	10	10	10	10	10	10	10	10	10	10	10	10	10	10	10	10	10	10
25/26	10	10	10	10	10	10	10	10	10	10	10	10	10	10	10	10	10	10	10	10	10	10	10	10	10	10	10	10	10	10	10	10	10	10	10	10
11/12	10	10	10	10	10	10	10	10	10	10	10	10	10	10	10	10	10	10	10	10	10	10	10	10	10	10	10	10	10	10	10	10	10	10	10	10
1 & 2 Bravo	10	10	10	10	10	10	10	10	10	10	10	10	10	10	10	10	10	10	10	10	10	10	10	10	10	10	10	10	10	10	10	10	10	10	10	10

NOTE: This is automated data that may/may not agree with the official BAM thinking that's found on the daily slides or special visibility report slides. This data should be used as a guide only



# Houston Pilots Wind Chart



Sustained wind 13 Knots  
Gusts 18 Knots  
Wind from the N

**Example**

WS: 13  
G:18  
N

Time Knots	Sun 3am	Sun 4am	Sun 5am	Sun 6am	Sun 7am	Sun 8am	Sun 9am	Sun 10am	Sun 11am	Sun 12pm	Sun 1pm	Sun 2pm	Sun 3pm	Sun 4pm	Sun 5pm	Sun 6pm	Sun 7pm	Sun 8pm	Sun 9pm	Sun 10pm	Sun 11pm	Mon 12am	Mon 1am	Mon 2am	Mon 3am	Mon 4am	Mon 5am	Mon 6am	Mon 7am	Mon 8am	Mon 9am	Mon 10am	Mon 11am	Mon 12pm	Mon 1pm	Mon 2pm	
610 Bridge	3	3	3	4	3	6	5	6	6	5	5	5	6	5	5	8	7	7	7	8	8	9	8	7	6	5	4	3	3	3	3	5	5	5	5	6	
	8	8	11	11	11	12	10	10	10	8	7	7	7	8	7	6	9	9	10	11	12	12	13	13	11	9	8	6	6	5	5	5	7	7	8	8	9
	W	W	WSW	W	WSW	W	W	W	W	WNW	WNW	WNW	WNW	WNW	W	SW	SSW	SSW	S	S	S	S	S	S	S	SSE	NE	NE	ENE	ENE	E	ESE	SE	SE	SE	SE	
Kinder 1	3	3	3	4	3	5	5	6	6	5	5	5	6	5	4	8	7	7	7	8	8	9	8	7	6	5	4	3	3	3	5	5	5	5	7		
	8	8	10	11	11	12	10	10	8	7	7	7	8	7	6	9	9	10	11	12	12	13	13	11	9	8	6	6	5	5	5	7	7	8	8	9	
	W	W	WSW	W	WSW	W	W	W	WNW	WNW	WNW	WNW	WNW	WNW	W	SW	SSW	S	S	S	S	S	S	S	S	SE	NE	NE	ENE	ENE	E	ESE	SE	SE	SE	SE	
Greens Bayou	3	3	3	4	3	5	5	6	6	5	5	5	6	5	4	8	7	7	7	8	8	9	8	7	6	5	4	4	4	4	5	5	5	5	6	7	
	8	8	10	11	11	12	10	11	9	7	6	7	8	7	6	9	10	10	11	11	12	13	12	11	9	8	6	6	6	6	6	7	7	8	8	9	
	W	W	W	W	W	W	W	W	WNW	WNW	WNW	WNW	WNW	WNW	W	WSW	SSW	S	S	S	S	S	S	S	S	ESE	NE	NE	ENE	ENE	E	ESE	ESE	SE	ESE	SE	
Shell Crude	3	3	3	4	4	5	5	6	6	5	5	4	5	4	4	8	8	7	7	7	8	8	8	7	6	5	4	4	4	4	5	5	6	6	8		
	9	9	10	11	11	12	10	10	9	7	6	7	7	7	7	9	10	11	11	11	12	13	12	11	9	8	6	6	6	6	6	7	7	8	9	9	
	W	W	W	W	W	W	W	W	WNW	WNW	WNW	WNW	WNW	WNW	W	SSW	SSW	S	S	S	S	S	S	S	SSW	S	SE	NE	NE	ENE	ENE	E	ESE	ESE	SE	SE	SE
Lynchburg Ferries	4	4	4	4	3	5	5	6	6	5	4	4	5	4	5	8	8	8	8	8	8	9	8	7	6	6	4	4	5	4	5	5	6	6	8	8	
	10	9	9	11	11	12	11	11	9	7	6	7	8	7	8	10	11	11	11	12	12	12	12	10	9	8	6	6	6	7	6	6	7	7	8	9	9
	W	W	W	W	W	W	W	W	WNW	WNW	W	W	W	W	S	S	S	S	S	SSW	SSW	SSW	SSW	S	SSW	SSW	S	ESE	NNE	NE	ENE	ENE	E	ESE	ESE	SE	SE
Exxon 3	4	4	4	4	4	5	5	5	5	4	3	3	4	7	9	9	9	9	9	9	9	9	9	9	7	6	5	5	5	5	5	6	7	7	9		
	11	10	10	11	11	12	11	11	9	8	6	6	7	8	9	11	12	12	12	12	12	13	12	11	9	9	7	7	7	6	6	7	7	8	9	10	
	W	W	W	W	W	W	W	W	WNW	WNW	WNW	W	SW	SSW	SSE	S	S	S	SSW	SSW	SSW	SSW	SSW	SSW	SSW	SSE	NE	NE	ENE	ENE	E	ESE	ESE	SE	SE	SE	
Morgans Point	6	6	6	6	6	7	6	6	6	5	3	3	4	6	6	9	10	11	11	11	10	11	11	10	9	8	7	6	6	5	5	6	7	8	10		
	11	10	11	12	11	13	10	10	9	7	6	6	7	8	10	12	13	14	14	13	13	14	13	12	11	10	8	7	7	7	7	7	7	8	9	10	11
	W	WNW	W	W	W	W	W	W	WNW	WNW	NW	SW	SSE	SE	SE	S	S	SSW	SSW	SSW	SSW	SSW	SSW	SSW	SSW	SSW	SSW	SSE	NE	NE	ENE	E	ESE	ESE	SE	SE	SE
75/76	10	9	9	10	9	11	9	7	7	4	2	5	7	8	11	13	14	14	14	13	13	13	13	12	11	10	8	7	7	7	7	7	7	8	9	11	
	12	11	12	13	12	13	11	10	9	7	6	8	8	9	12	14	16	16	16	15	15	15	15	14	13	11	9	8	8	8	8	8	9	10	11	13	
	WNW	WNW	WNW	W	W	W	W	W	WNW	NW	ESE	ESE	ESE	SE	SE	S	S	SSW	SSW	SSW	SSW	SSW	SSW	SSW	SSW	SSW	SSW	SSW	W	NNE	NE	ENE	E	ESE	SE	SE	SE
63/64	11	10	10	11	11	12	10	8	7	4	1	4	7	8	11	14	15	15	15	14	14	14	14	13	13	11	9	7	6	7	6	7	7	8	9	11	
	12	11	11	13	12	13	11	11	10	8	6	7	7	8	12	15	17	17	17	15	15	16	15	15	14	12	10	8	7	8	8	7	9	10	12	14	
	WNW	WNW	WNW	W	W	W	W	W	WNW	WNW	SE	ESE	ESE	SE	SSE	S	SSW	SSW	SSW	SSW	SSW	SSW	SSW	SSW	SSW	SSW	SSW	SSW	ESE	NE	ENE	E	ESE	SE	SE	SE	
51/52	11	9	10	11	11	11	11	9	8	5	1	4	6	8	11	14	15	15	14	13	13	14	14	13	12	11	9	7	6	7	6	7	7	8	9	11	
	12	10	11	13	12	13	12	11	10	8	7	7	7	9	12	15	17	17	16	15	15	15	15	15	14	12	11	9	7	8	7	8	7	9	10	12	13
	WNW	WNW	WNW	WNW	W	W	W	W	W	WNW	WSW	SE	SE	SE	SSE	SSW	SSW	SSW	SSW	SSW	SSW	SSW	SSW	SSW	SSW	SSW	SSW	SSW	SSW	ENE	ENE	E	ESE	SE	SE	SE	SE
37/38	10	9	10	11	11	11	10	9	8	6	2	3	5	8	10	14	15	14	13	12	13	13	13	13	12	11	10	7	7	7	7	7	7	8	9	10	
	12	11	11	12	13	13	11	11	10	8	6	7	7	9	11	15	16	16	15	14	14	15	15	14	12	11	10	8	8	9	8	9	8	9	10	11	12
	WNW	WNW	WNW	W	W	W	W	W	W	WNW	WNW	SSE	SSE	SSE	S	SSW	SSW	SSW	SSW	SSW	SSW	SSW	SSW	SSW	SSW	SSW	SSW	SSW	SSW	E	E	ESE	ESE	SE	SE	SE	SE
25/26	9	9	10	10	10	11	10	8	8	6	3	3	5	8	10	13	13	13	12	11	12	12	12	12	11	10	9	8	7	6	7	6	7	7	8	9	10
	11	11	11	12	13	13	11	11	10	8	6	6	7	9	11	14	15	15	14	13	14	14	14	14	13	12	12	10	9	9	9	9	8	9	10	11	12
	WNW	WNW	WNW	WNW	W	W	W	W	W	WNW	W	SSW	S	S	S	SSW	SSW	SSW	SSW	SSW	SSW	SSW	SSW	SSW	SSW	SSW	SSW	SSW	SSW	SE	E	ESE	ESE	SE	SE	SE	SE
11/12	8	9	9	9	10	10	9	8	8	7	4	7	9	10	12	13	13	12	12	12	12	12	12	12	11	10	10	8	7	7	7	7	7	7	8	9	10
	11	11	11	12	12	13	11	10	10	8	6	6	8	10	11	14	14	15	14	14	14	14	14	14	13	12	11	9	9	9	9	8	9	10	10	11	
	WNW	WNW	WNW	WNW	W	W	WNW	W	WNW	WNW	W	SSW	S	S	S	SSW	SSW	SSW	SSW	SSW	SSW	SSW	SSW	SSW	SSW	SSW	SSW	SSW	SSW	SSE	E	ESE	ESE	SE	SE	SE	SE
1 & 2 Bravo	13	12	11	12	12	13	11	10	9	8	5	6	8	9	11	14	14	15	14	14	14	14	14	14	15	14	12	11	10	9	8	7	8	8	8	9	
	WNW	WNW	WNW	WNW	WNW	WNW	WNW	WNW	WNW	WNW	W	SW	SSW	S	S	SSW	SSW	SSW	SSW	SSW	SSW	SSW	SSW	SSW	SSW	SSW	SSW	SSW	SSW	SSW	ESE	ESE	ESE	ESE	SE	SE	SE

NOTE: This is automated data that may/may not agree with the official BAM thinking that's found on the daily slides or special visibility report slides. This data should be used as a guide only

# Houston Pilots: Sun. 4/30/2023

## Forecast Discussion

**Precip:** Favoring dry conditions today.

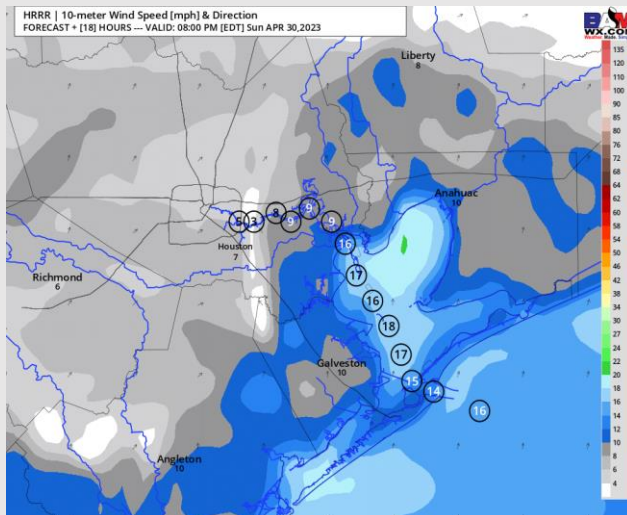
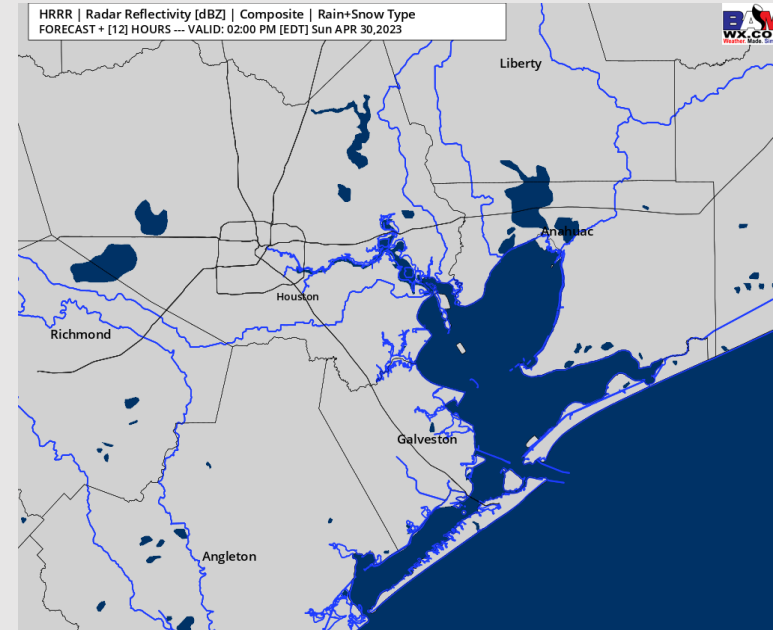
**Wind:** Sustained winds will likely begin out of the NW then gradually veer from the SW through the early PM. Winds north of Morgan's Point will generally be 5-10 kts while winds south of Morgan's Point range from 13-18 kts, aside from 12-4 PM local time when all stations will experience winds of 1-7 kts.

**Temps:** High temps today in the mid 70s F at the Boarding Station and in the mid 80s F at all other stations.

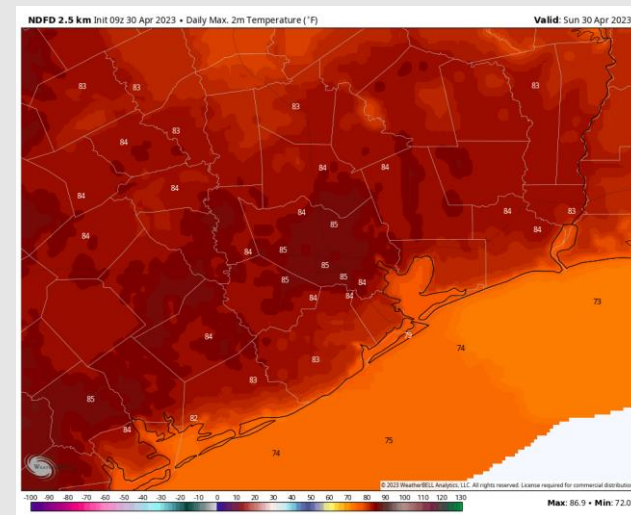
**Visibility:** Not anticipating any visibility concerns.

## Precip Image: 1 PM CT

HRRR | Radar Reflectivity [dBZ] | Composite | Rain+Snow Type  
FORECAST + [12] HOURS --- VALID: 02:00 PM [EDT] Sun APR 30, 2023



Wind Speed:  
7 PM CT



High Temps  
Today



# Houston Pilots: Mon. 5/1/2023

## Forecast Discussion

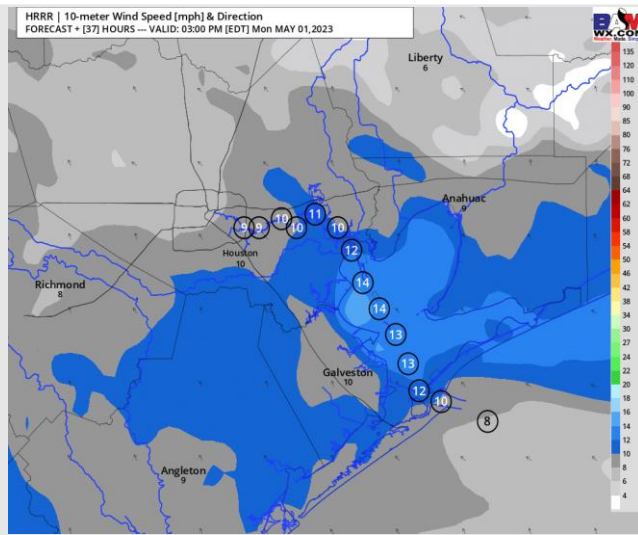
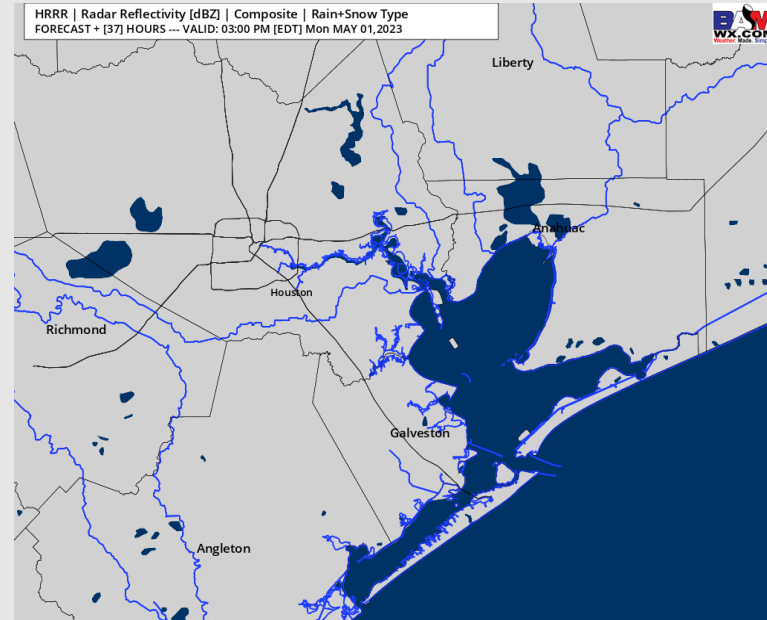
**Precip:** Favoring dry conditions throughout the day Monday

**Wind:** Winds will begin out of the SSW Monday then then will likely become variable between 9 AM and 12 PM. After noon, winds will shift out of the SSE. Winds will range from 8 – 14 kts throughout most of the day. Gusts up to 20 kts will be possible.

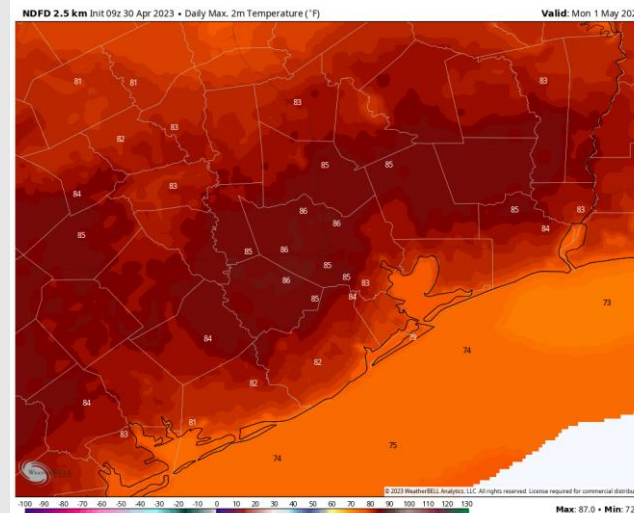
**Temps:** High temperatures Monday in the mid 70s F at the Boarding Station in the upper 70s F for all other stations S of Morgan's Point, and in the mid 80s F for station N of Morgan's Point.

**Visibility:** Not anticipating any reduced visibility due to fog.

## Precip Image: 2 PM CT



Wind Speed:  
2 PM CT



High Temps  
Monday

# Houston Pilots: Tue. 5/2/2023

## Forecast Discussion

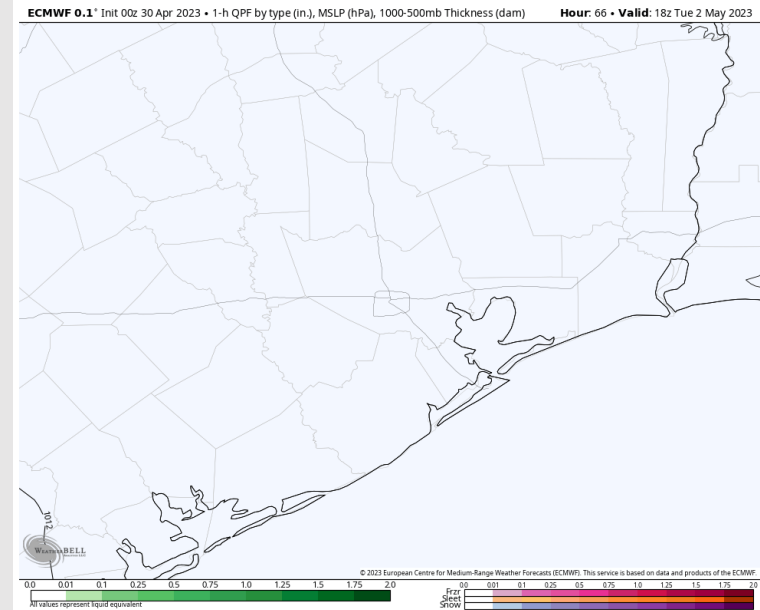
**Precip:** Favoring dry conditions throughout the day Tuesday.

**Wind:** Winds will begin out of the SSE Tuesday morning at 8 – 13 kts S of Morgan's Point and 3 – 8 kts N of Morgan's Point. Throughout the day winds will gradually shift out of the E/SE with all winds calming in the late morning to 3 – 8 kts. After 12 PM, winds S of Morgan's Point will again increase to 8 - 13 kts. Gusts up to 23 kts will be possible into the early PM Tuesday.

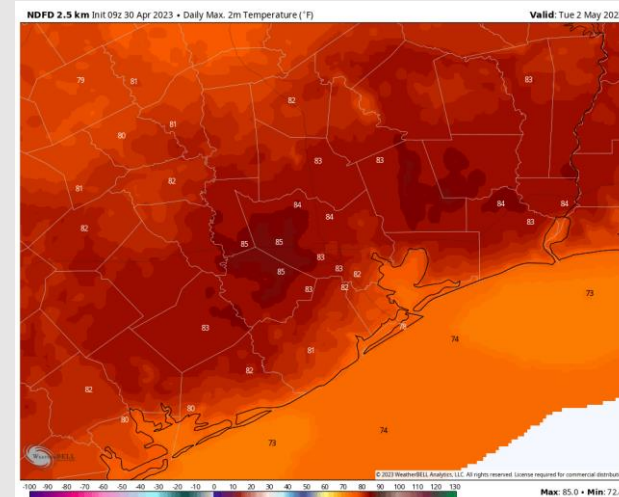
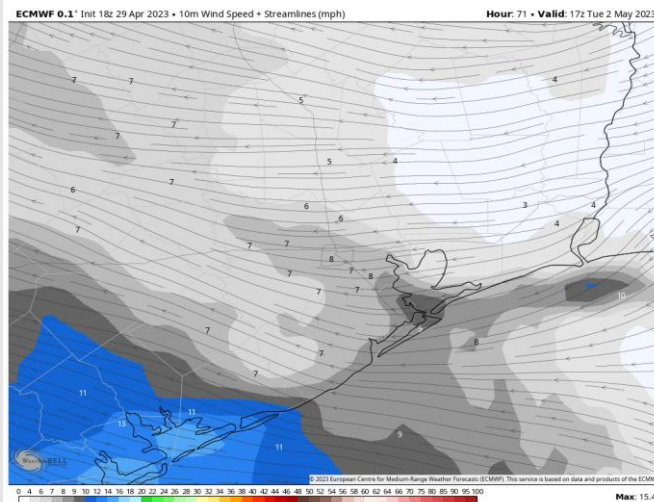
**Temps:** High temperatures Tuesday in the mid 70s F at the Boarding Station and in the low 80s F at all other stations.

**Visibility:** Not anticipating any visibility concerns at this time.

## Precip Image: 2 PM CT



**Wind Speed:**  
12 PM CT

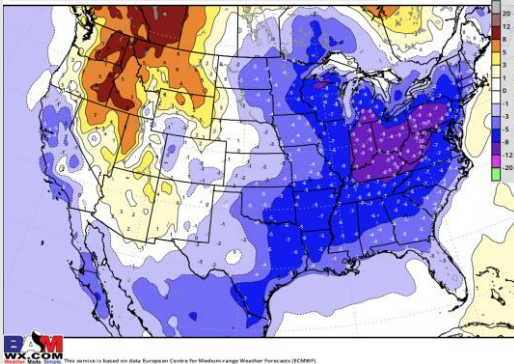


**High Temps**  
**Tuesday**

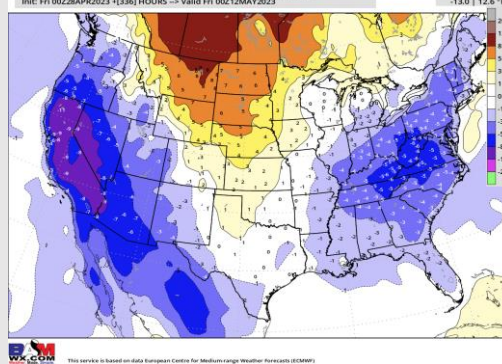


# Houston Pilots: 4/30/2023

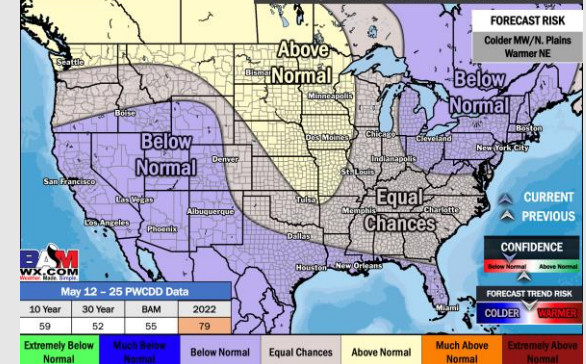
## Next 7 Day Temperature Departure



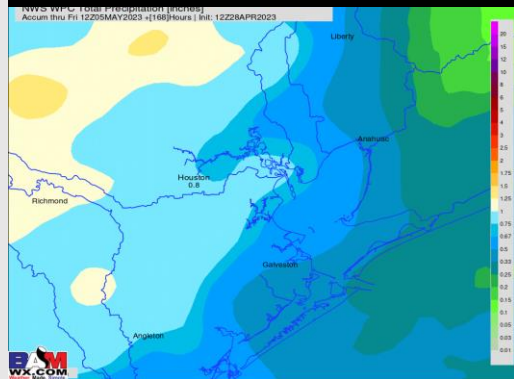
## 8-14 Day Temperature Departure



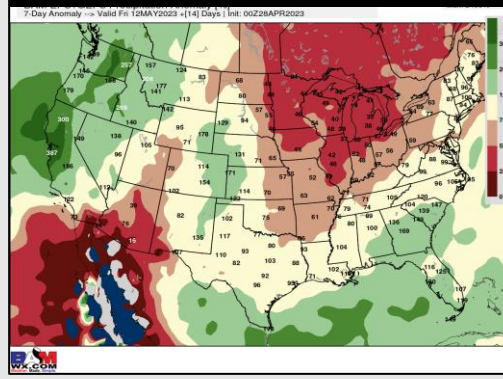
## 15-30 Day Temperature Departure



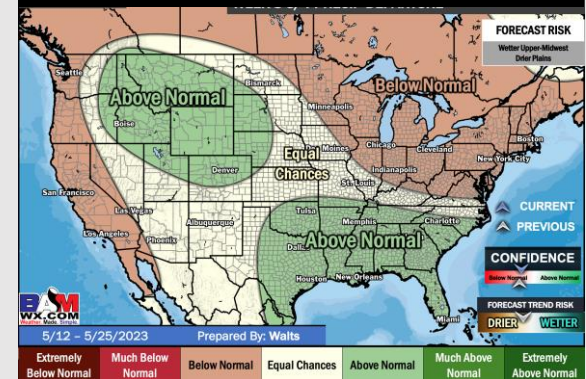
## Next 7 Day Total Precipitation



## 8-14 Day % of Average Precip.



## 15-30 Day % of Average Precip.



- Anticipating quieter weather with temps below average for this time of year.
- Expecting near normal precipitation chances and near normal temperatures for the week 2 timeframe.
- Near to below normal temperatures and above normal chances for precipitation are favored in the week 3/4 timeframe.