

# Houston Pilots Forecast Package



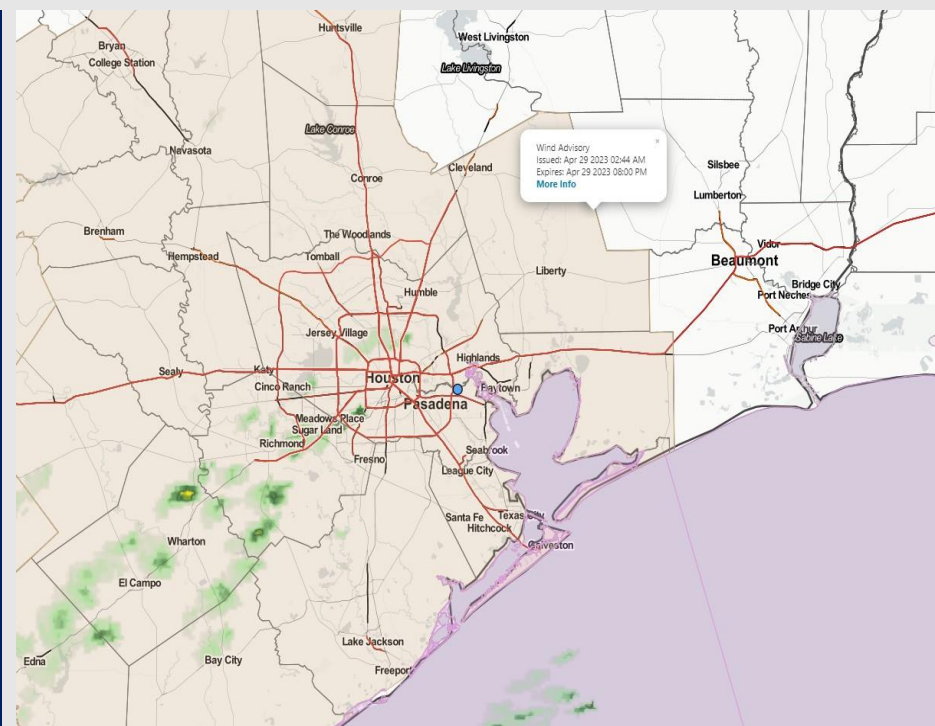
Updated: 5:00 AM CT

Saturday, April 29, 2023

Forecaster: Jonathan Kipper

## Weather Headlines

- Watching for a few showers/scattered thunderstorms to be possible through late this morning then favoring a drier week ahead.
- Today will be the main day for gusty winds (gusts 30-35 knots possible).
- Threats for sea fog formation look very low with no strong signals over the next several days.



**Radar/NWS Alerts: 5:00 AM CT**



As always, please do not hesitate to reach out to us with any forecast questions via the chat option on the Weather Porthole or our on-call number, **(317)-560-8122** press 1 for forecast questions.

# Houston Pilots Extended Range Visibility Report



## Tuesday 5/2/23

Reduced visibility does not look to be a concern for Tuesday.

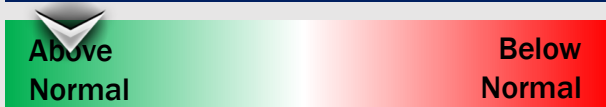
### Forecast Confidence



## Thursday 5/4/23

Reduced visibility does not look to be a concern for Thursday.

### Forecast Confidence



## Wednesday 5/3/23

Reduced visibility does not look to be a concern for Wednesday.

### Forecast Confidence



## Chance for Reduced Visibility

Tuesday AM	Unlikely
Tuesday PM	Unlikely
Wednesday AM	Unlikely
Wednesday PM	Unlikely
Thursday AM	Unlikely
Thursday PM	Unlikely

# Houston Pilots Visibility Chart (miles)



Time	Sat 3am	Sat 4am	Sat 5am	Sat 6am	Sat 7am	Sat 8am	Sat 9am	Sat 10am	Sat 11am	Sat 12pm	Sat 1pm	Sat 2pm	Sat 3pm	Sat 4pm	Sat 5pm	Sat 6pm	Sat 7pm	Sat 8pm	Sat 9pm	Sat 10pm	Sat 11pm	Sun 12am	Sun 1am	Sun 2am	Sun 3am	Sun 4am	Sun 5am	Sun 6am	Sun 7am	Sun 8am	Sun 9am	Sun 10am	Sun 11am	Sun 12pm	Sun 1pm	Sun 2pm
610 Bridge	10	10	10	10	10	10	10	10	10	10	10	10	10	10	10	10	10	10	10	10	10	10	10	10	10	10	10	10	10	10	10	10	10	10	10	
Kinder 1	10	10	10	10	10	10	10	10	10	10	10	10	10	10	10	10	10	10	10	10	10	10	10	10	10	10	10	10	10	10	10	10	10	10	10	
Greens Bayou	10	10	10	10	10	10	10	10	10	10	10	10	10	10	10	10	10	10	10	10	10	10	10	10	10	10	10	10	10	10	10	10	10	10	10	
Shell Crude	10	10	10	10	10	10	10	10	10	10	10	10	10	10	10	10	10	10	10	10	10	10	10	10	10	10	10	10	10	10	10	10	10	10	10	
Lynchburg Ferries	10	10	10	10	10	10	10	10	10	10	10	10	10	10	10	10	10	10	10	10	10	10	10	10	10	10	10	10	10	10	10	10	10	10	10	
Exxon 3	10	10	10	10	10	10	10	10	10	10	10	10	10	10	10	10	10	10	10	10	10	10	10	10	10	10	10	10	10	10	10	10	10	10	10	
Morgans Point	10	10	10	10	10	10	10	10	10	10	10	10	10	10	10	10	10	10	10	10	10	10	10	10	10	10	10	10	10	10	10	10	10	10	10	
75/76	10	10	10	10	10	10	10	10	10	10	10	10	10	10	10	10	10	10	10	10	10	10	10	10	10	10	10	10	10	10	10	10	10	10	10	
63/64	10	10	10	10	10	10	10	10	10	10	10	10	10	10	10	10	10	10	10	10	10	10	10	10	10	10	10	10	10	10	10	10	10	10	10	
51/52	10	10	10	10	10	10	10	10	10	10	10	10	10	10	10	10	10	10	10	10	10	10	10	10	10	10	10	10	10	10	10	10	10	10	10	
37/38	10	10	10	10	10	10	10	10	10	10	10	10	10	10	10	10	10	10	10	10	10	10	10	10	10	10	10	10	10	10	10	10	10	10	10	
25/26	10	10	10	10	10	10	10	10	10	10	10	10	10	10	10	10	10	10	10	10	10	10	10	10	10	10	10	10	10	10	10	10	10	10	10	
11/12	10	10	10	10	10	10	10	10	10	10	10	10	10	10	10	10	10	10	10	10	10	10	10	10	10	10	10	10	10	10	10	10	10	10	10	
1 & 2 Bravo	10	10	10	10	10	10	10	10	10	10	10	10	10	10	10	10	10	10	10	10	10	10	10	10	10	10	10	10	10	10	10	10	10	10	10	

NOTE: This is automated data that may/may not agree with the official BAM thinking that's found on the daily slides or special visibility report slides. This data should be used as a guide only



# Houston Pilots Wind Chart



**Example**

Sustained wind 13 Knots  
Gusts 18 Knots  
Wind from the N

WS: 13  
G:18  
N

Time Knots	Sat 3am	Sat 4am	Sat 5am	Sat 6am	Sat 7am	Sat 8am	Sat 9am	Sat 10am	Sat 11am	Sat 12pm	Sat 1pm	Sat 2pm	Sat 3pm	Sat 4pm	Sat 5pm	Sat 6pm	Sat 7pm	Sat 8pm	Sat 9pm	Sat 10pm	Sat 11pm	Sun 12am	Sun 1am	Sun 2am	Sun 3am	Sun 4am	Sun 5am	Sun 6am	Sun 7am	Sun 8am	Sun 9am	Sun 10am	Sun 11am	Sun 12pm	Sun 1pm	Sun 2pm
610 Bridge	9	9	6	9	8	10	12	14	14	13	13	15	14	13	18	17	16	13	11	10	8	7	6	5	5	5	5	6	6	7	7	7	7	7	7	
	20	23	17	19	21	23	25	24	24	23	23	24	24	23	28	26	24	20	17	15	12	10	9	8	9	7	7	6	7	9	8	8	8	8	8	
	WNW	WNW	NW	NW	NW	NW	NW	NW	NW	NW	NW	NW	NW	NW	NW	NW	NW	NW	NW	NW	NW	NW	NW	NW	NW	NW	NW	NW	NW	NW	NW	NW	NW	NW	WSW	
Kinder 1	9	9	5	9	8	10	12	14	15	14	13	13	15	14	13	18	17	16	13	11	10	8	7	6	6	6	5	5	5	5	5	6	7	7	7	7
	20	22	16	19	21	23	25	24	25	23	23	24	25	23	23	27	26	24	20	17	15	12	10	9	9	9	7	7	6	7	9	8	8	8	8	
	WNW	WNW	NW	NW	NW	NW	NW	NW	NW	NW	NW	NW	NW	NW	NW	NW	NW	NW	NW	NW	NW	NW	NW	NW	NW	NW	NW	NW	NW	NW	NW	NW	NW	NW	WSW	
Greens Bayou	9	9	4	9	9	10	13	14	15	14	14	13	15	14	13	18	17	16	13	11	10	8	7	6	6	6	5	5	5	5	5	6	7	7	7	7
	20	21	15	18	21	23	26	24	25	23	23	24	25	23	22	27	25	24	20	17	15	12	10	9	9	9	7	7	7	7	9	8	8	8	7	
	WNW	WNW	NW	NW	NW	NW	NW	NW	NW	NW	NW	NW	NW	NW	NW	NW	NW	NW	NW	NW	NW	NW	NW	NW	NW	NW	NW	NW	NW	NW	NW	NW	NW	NW	WSW	
Shell Crude	9	9	4	9	9	10	13	14	15	14	14	14	15	14	13	18	17	16	13	12	10	8	7	6	6	6	5	5	5	5	6	7	7	7	7	7
	20	21	14	18	21	23	26	24	25	23	23	24	25	23	23	26	25	24	20	17	15	12	11	10	9	9	8	7	7	7	9	8	8	8	7	
	WNW	WNW	NW	NW	NW	NW	NW	NW	NW	NW	NW	NW	NW	NW	NW	NW	NW	NW	NW	NW	NW	NW	NW	NW	NW	NW	NW	NW	NW	NW	NW	NW	NW	NW	WSW	
Lynchburg Ferries	8	9	3	10	10	10	13	14	15	14	14	13	15	14	12	17	16	15	13	12	10	9	7	7	6	6	5	5	5	6	7	7	7	7	7	
	19	21	12	18	21	23	26	24	25	24	23	25	24	23	22	26	24	22	20	17	14	12	11	10	9	9	8	8	8	7	7	8	8	8	8	
	WNW	NW	WNW	NW	NW	NW	NW	NW	NW	NW	NW	NW	NW	NW	NW	NW	NW	NW	NW	NW	NW	NW	NW	NW	NW	NW	NW	NW	NW	NW	NW	NW	NW	NW	WSW	
Exxon 3	8	7	4	10	10	10	13	14	15	14	14	14	14	14	12	18	17	16	14	12	11	9	8	8	7	7	6	6	6	6	6	6	7	7	7	
	19	20	13	18	21	23	25	24	25	24	23	26	24	23	23	26	24	22	20	18	15	13	11	10	10	9	9	8	8	8	8	8	8	8	8	
	WNW	WNW	WNW	NW	NW	NW	NW	NW	NW	NW	NW	NW	NW	NW	NW	NW	NW	NW	NW	NW	NW	NW	NW	NW	NW	NW	NW	NW	NW	NW	NW	NW	NW	NW	WSW	
Morgans Point	10	7	7	11	12	14	16	16	16	16	16	17	16	16	15	19	18	17	16	14	12	11	9	9	8	8	8	8	8	7	7	7	7	7	7	
	20	18	15	18	22	25	25	25	25	24	24	27	25	24	24	26	25	23	21	19	16	14	12	11	11	11	10	10	9	9	8	9	8	9	9	
	WNW	W	WNW	NW	NW	NW	NW	NW	NW	NW	NW	NW	NW	NW	NW	NW	NW	NW	NW	NW	NW	NW	NW	NW	NW	NW	NW	NW	NW	NW	NW	NW	NW	NW	WSW	
75/76	16	10	11	14	18	18	19	20	21	21	20	22	20	21	19	22	21	20	19	17	15	14	12	12	12	11	11	10	10	9	9	8	8	7	7	8
	21	16	16	18	24	26	26	25	26	26	25	29	26	26	26	27	25	24	22	20	18	16	14	13	13	12	12	12	11	11	10	9	9	9	9	10
	WNW	WNW	NW	WNW	NW	NW	NW	NW	NW	NW	NW	NW	NW	NW	NW	NW	NW	NW	NW	NW	NW	NW	NW	NW	NW	NW	NW	NW	NW	NW	NW	NW	NW	NW	SSW	
63/64	19	10	13	15	21	19	22	22	23	24	23	25	22	24	22	25	24	23	22	19	17	15	14	13	13	12	11	11	11	10	10	9	9	7	7	8
	22	14	15	17	24	25	26	25	27	27	29	27	28	27	28	27	25	24	21	19	17	15	14	14	13	12	12	12	11	11	10	10	9	9	10	
	WNW	NW	WNW	WNW	NW	NW	NW	NW	NW	NW	NW	NW	NW	NW	NW	NW	NW	NW	NW	NW	NW	NW	NW	NW	NW	NW	NW	NW	NW	NW	NW	NW	NW	NW	SSW	
51/52	19	10	12	16	21	22	24	22	24	25	25	25	23	25	23	26	25	24	22	19	18	16	14	13	12	11	11	11	10	10	9	8	7	7	8	
	22	12	14	18	24	26	27	25	27	28	28	29	28	28	27	28	26	24	22	20	18	15	14	14	12	12	12	12	11	11	10	9	9	9	10	
	WNW	WNW	WNW	WNW	NW	NW	NW	NW	NW	NW	NW	NW	NW	NW	NW	NW	NW	NW	NW	NW	NW	NW	NW	NW	NW	NW	NW	NW	NW	NW	NW	NW	NW	NW	SSW	
37/38	16	9	11	17	21	23	23	22	24	25	24	25	24	24	23	26	25	24	22	19	17	16	13	13	12	11	10	10	10	10	9	8	7	7	8	
	19	11	13	19	23	27	27	26	27	28	28	29	28	28	28	29	28	27	24	22	20	18	15	14	13	12	12	11	11	10	10	9	9	9	9	
	WNW	WNW	WNW	WNW	NW	NW	NW	NW	NW	NW	NW	NW	NW	NW	NW	NW	NW	NW	NW	NW	NW	NW	NW	NW	NW	NW	NW	NW	NW	NW	NW	NW	NW	NW	SSW	
25/26	13	9	11	17	19	22	21	21	22	23	23	23	23	23	22	24	23	22	20	18	16	14	12	12	11	10	10	9	9	8	8	8	8	8	8	
	16	11	13	20	22	27	26	25	27	27	27	28	28	28	27	29	27	27	24	22	20	18	15	14	13	12	11	10	10	10	9	9	9	9	9	
	WSW	NW	WNW	WNW	NW	NW	NW	NW	NW	NW	NW	NW	NW	NW	NW	NW	NW	NW	NW	NW	NW	NW	NW	NW	NW	NW	NW	NW	NW	NW	NW	NW	NW	NW	SSW	
11/12	11	9	11	16	18	22	18	20	21	23	22	23	23	22	21	25	23	23	20	19	17	15	13	12	11	10	10	10	9	9	9	8	8	8	8	
	13	11	13	20	23	28	24	25	27	28	27	29	29	28	27	29	27	27	24	23	21	19	16	15	13	12	12	11	11	10	10	10	9	9	9	
	SSE	WNW	WNW	WNW	NW	NW	NW	NW	NW	NW	NW	NW	NW	NW	NW	NW	NW	NW	NW	NW	NW	NW	NW	NW	NW	NW	NW	NW	NW	NW	NW	NW	NW	NW	WSW	
1 & 2 Bravo	12	8	12	19	22	25	22	23	25	27	25	27	27	25	25	30	27	27	25	23	21	19	17	16	15	13	13	12	12	11	10	10	9	8	9	
	12	9	12	20	23	27	25	25	28	30	28	30	31	29	29	32	29	29	27	25	23	21	18	16	15	14	13	13	13	12	11	10	10	10	10	
	E	WSW	WNW	WNW	WNW	NW	NW	NW	NW	NW	NW	NW	NW	NW	NW	NW	NW	NW	NW	NW	NW	NW	NW	NW	NW	NW	NW	NW	NW	NW	NW	NW	NW	NW	WSW	

NOTE: This is automated data that may/may not agree with the official BAM thinking that's found on the daily slides or special visibility report slides. This data should be used as a guide only

# Houston Pilots: sat. 4/29/2023

## Forecast Discussion

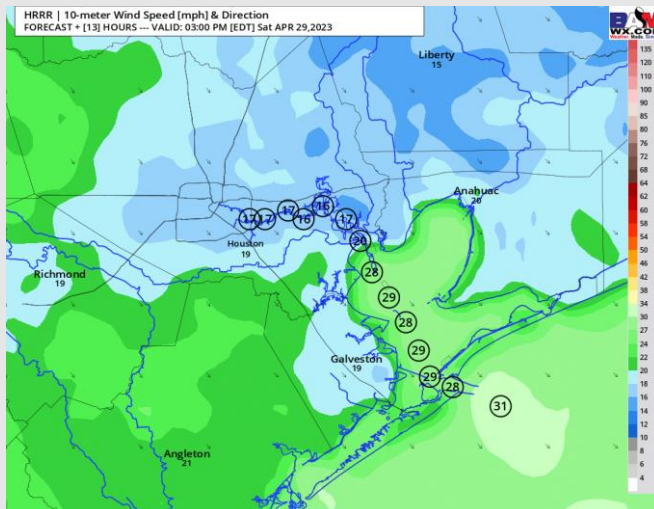
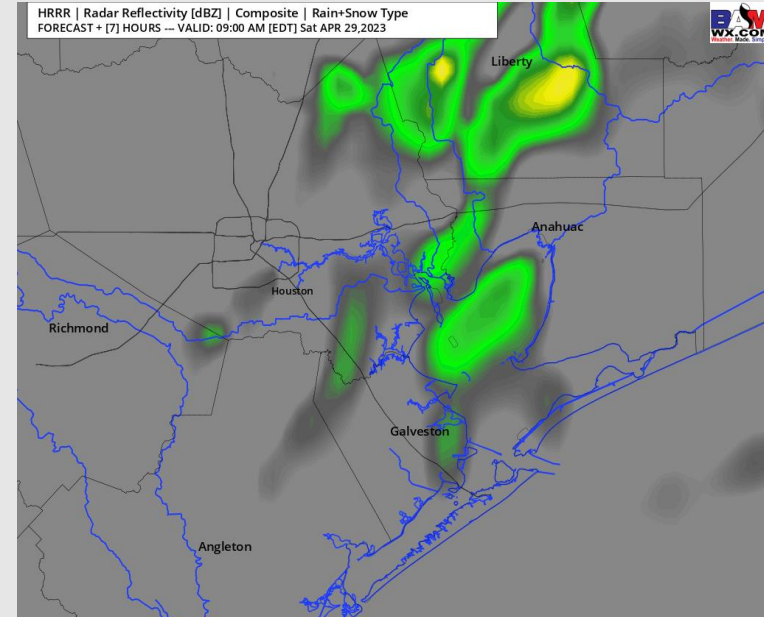
**Precip:** Scattered showers and a few thunderstorms will be possible through 10 AM before chances taper off for the day. Wind gusts and lightning will be the main severe threat. Dry conditions after 10 AM and through the rest of the day.

**Wind:** Anticipating winds out of the NW to gradually increase throughout the morning, becoming **elevated at 23-28 kts S of Morgan's Point with gusts up to 35 knots**. Winds N of Morgan's Point will be 11-16 kts. Getting into the evening/after 7 PM winds will range from 5 – 11 kts N of Morgan's Point and 20-25 kts S of Morgan's Point.

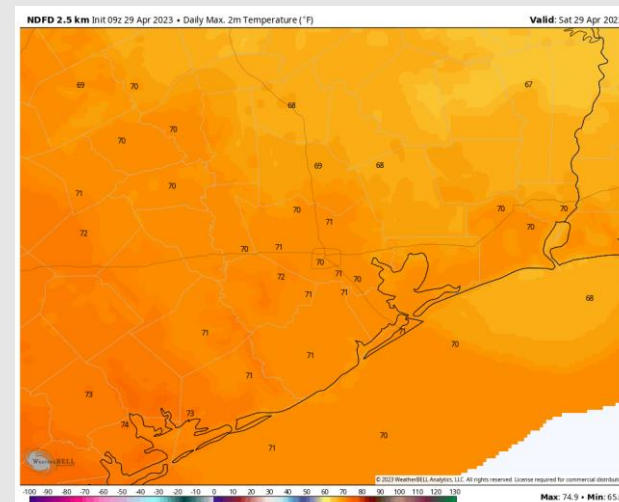
**Temps:** High temperatures today in the low 70s F for all stations.

**Visibility:** Reduced visibility due to heavy rains will be possible through the AM.

## Precip Image: 8 AM CT



Wind Speed:  
2 PM CT



High Temps  
Today



# Houston Pilots: Sun. 4/30/2023

## Forecast Discussion

**Precip:** Favoring dry conditions Sunday.

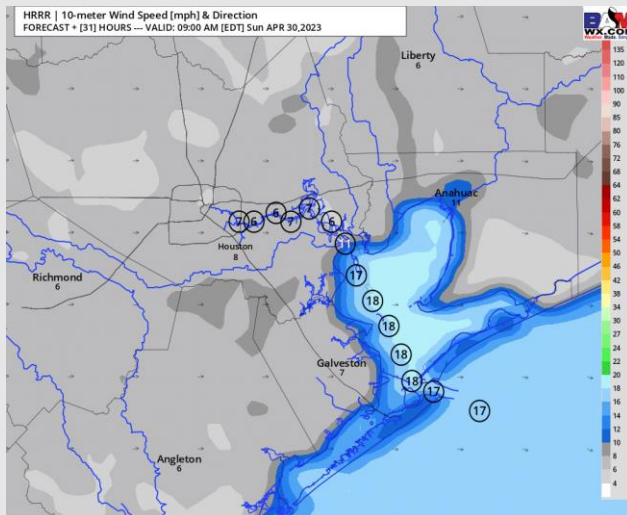
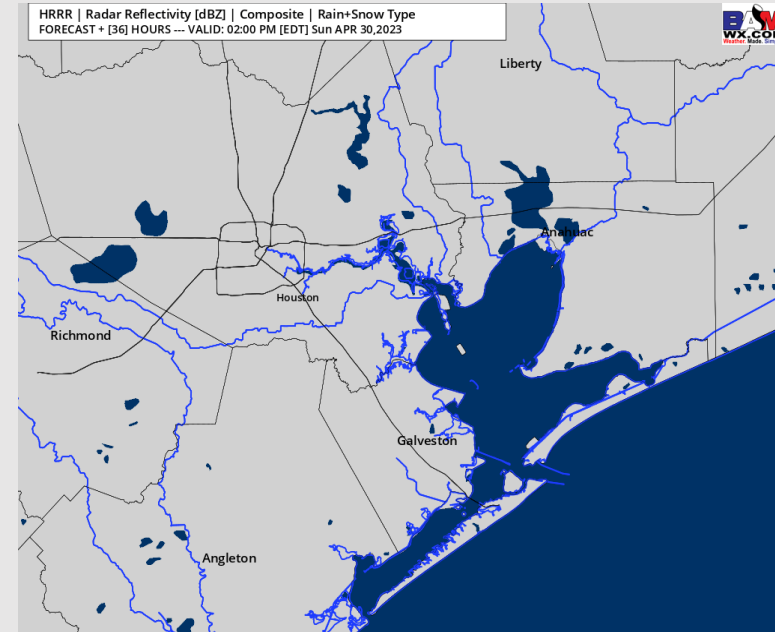
**Wind:** Sustained winds Sunday will likely begin out of the NW then gradually veer from the SW through the early PM. Winds north of Morgan's Point will generally be 5-10 kts while winds south of Morgan's Point range from 13-18 kts.

**Temps:** High temps Sunday int the mid 70s F at the Boarding Station and in the mid 80s F at all other stations.

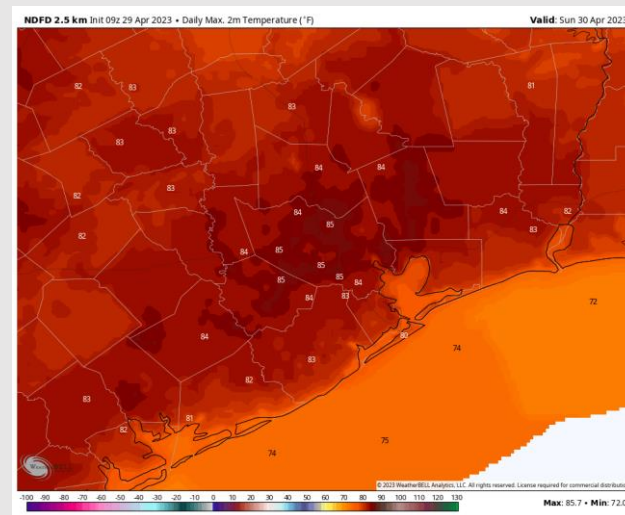
**Visibility:** Not anticipating any visibility concerns.

## Precip Image: 1 PM CT

HRRR | Radar Reflectivity [dBZ] | Composite | Rain-Snow Type  
FORECAST + [36] HOURS --- VALID: 02:00 PM [EDT] Sun APR 30, 2023



Wind Speed:  
8 AM CT



High Temps  
Sunday

# Houston Pilots: Mon. 5/1/2023

## Forecast Discussion

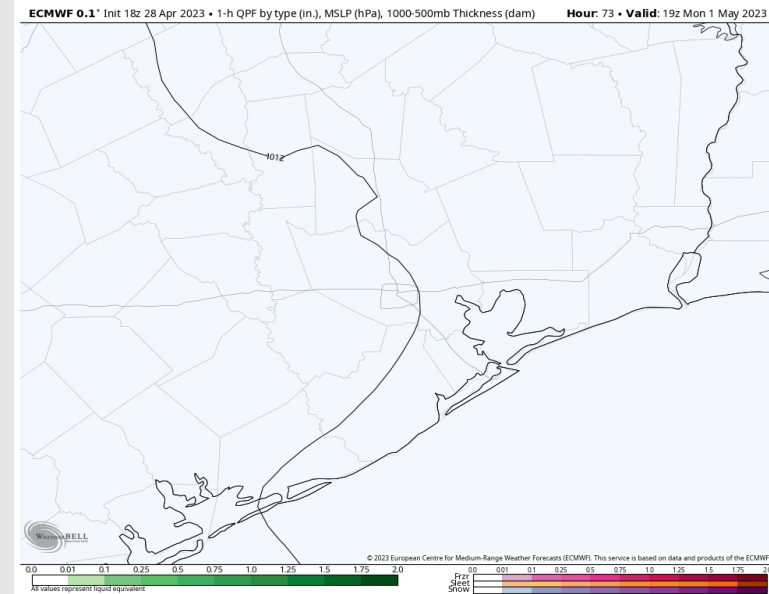
**Precip:** Favoring dry conditions throughout the day Monday

**Wind:** Winds will begin out of the SSW Monday then then will likely become variable between 9 AM and 12 PM. After noon, winds will shift out of the SSE. Winds will range from 8 – 13 kts throughout most of the day. Gusts up to 20 kts will be possible.

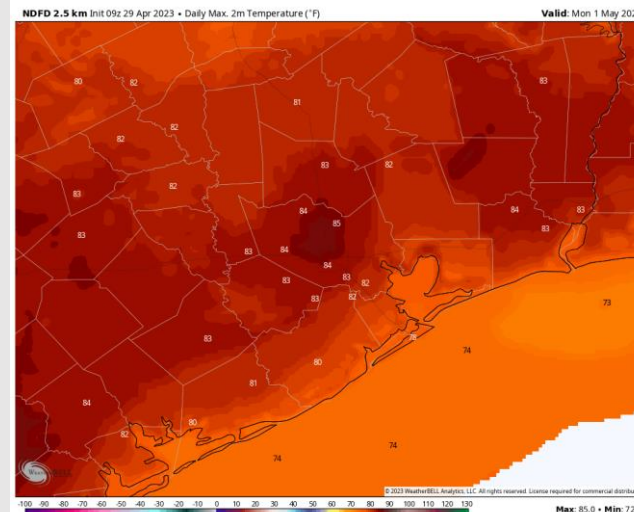
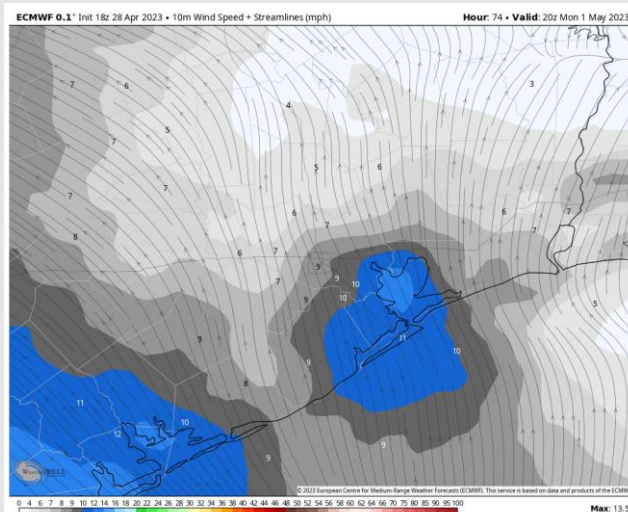
**Temps:** High temperatures Monday in the mid 70s F at the Boarding Station and in the low to mid 80s F at all other stations.

**Visibility:** Not anticipating any reduced visibility due to fog.

## Precip Image: 2 PM CT



Wind Speed:  
3 PM CT

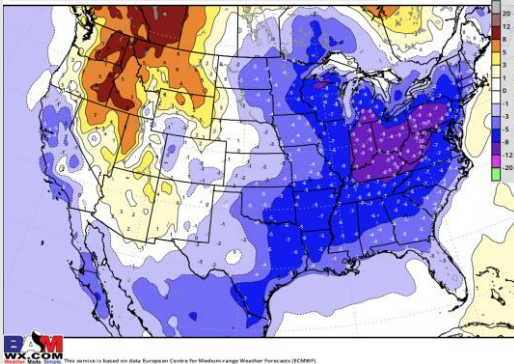


High Temps  
Monday

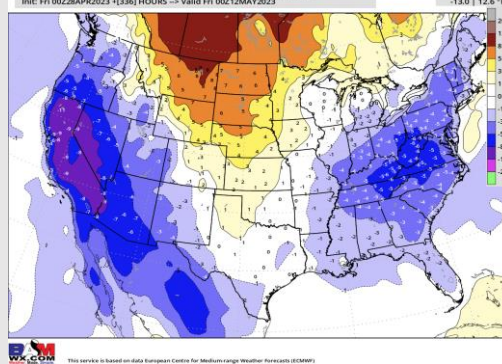


# Houston Pilots: 4/29/2023

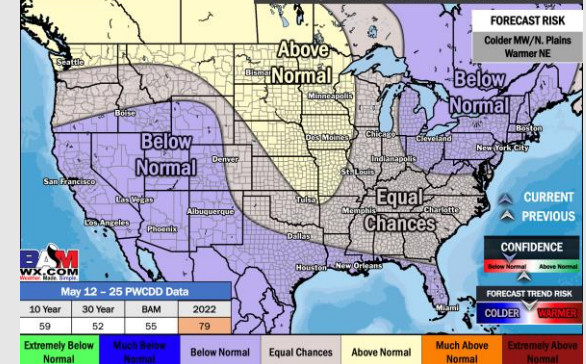
## Next 7 Day Temperature Departure



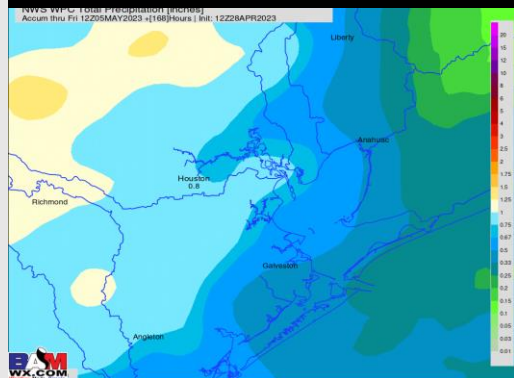
## 8-14 Day Temperature Departure



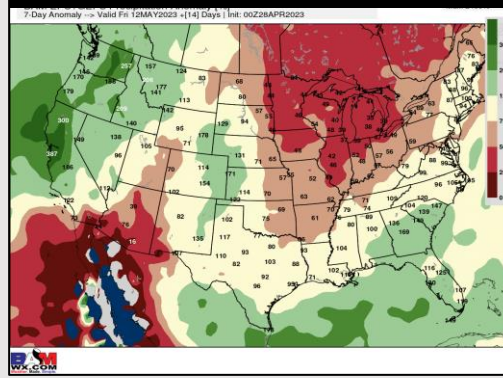
## 15-30 Day Temperature Departure



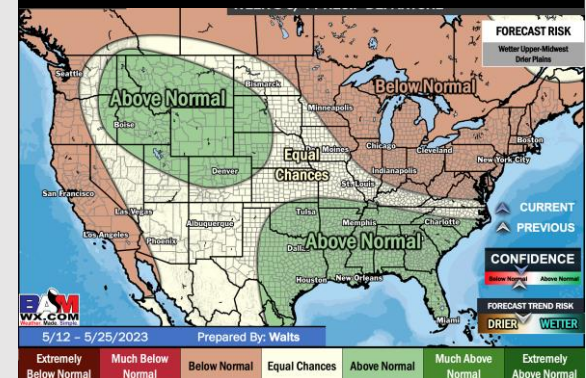
## Next 7 Day Total Precipitation



## 8-14 Day % of Average Precip.



## 15-30 Day % of Average Precip.



- A few shots of scattered showers this morning. Outside of this, anticipating quieter weather with temps below average for this time of year.
- Expecting near normal precipitation chances and near normal temperatures for the week 2 timeframe.
- Near to below normal temperatures and above normal chances for precipitation are favored in the week ¾ timeframe.