

Houston Pilots Forecast Package

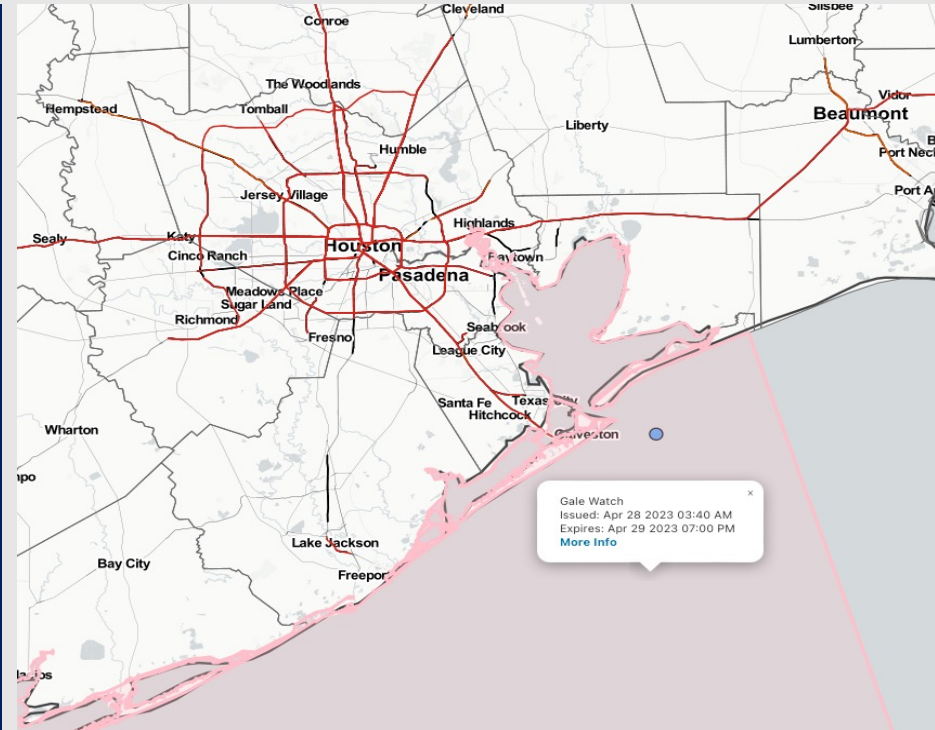


Updated: 5:00 AM CT
Friday, April 28, 2023

Forecaster: Vince Bryan

Weather Headlines

- Watching for a few stronger thunderstorms to be possible late tonight into the early AM hours of Saturday.
- Saturday will be the main day for gusty winds (gusts 30-35+ knots possible).
- Threats for sea fog formation look very low with no strong signals over the next several days.



Radar/NWS Alerts: 5:00 AM CT



As always, please do not hesitate to reach out to us with any forecast questions via the chat option on the Weather Porthole or our on-call number, **(317)-560-8122** press 1 for forecast questions.

Houston Pilots Extended Range Visibility Report



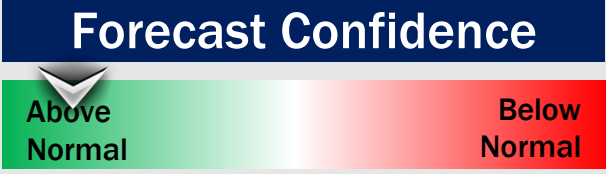
Monday 4/30/23

Reduced visibility does not look to be a concern for Monday.



Tuesday 5/1/23

Reduced visibility does not look to be a concern for Tuesday.



Wednesday 5/2/23

Reduced visibility does not look to be a concern for Wednesday.



Chance for Reduced Visibility

Monday AM	Unlikely
Monday PM	Unlikely
Tuesday AM	Unlikely
Tuesday PM	Unlikely
Wednesday AM	Unlikely
Wednesday PM	Unlikely

Houston Pilots Visibility Chart (miles)



Forecast Confidence



Time	Fri 3am	Fri 4am	Fri 5am	Fri 6am	Fri 7am	Fri 8am	Fri 9am	Fri 10am	Fri 11am	Fri 12pm	Fri 1pm	Fri 2pm	Fri 3pm	Fri 4pm	Fri 5pm	Fri 6pm	Fri 7pm	Fri 8pm	Fri 9pm	Fri 10pm	Fri 11pm	Sat 12am	Sat 1am	Sat 2am	Sat 3am	Sat 4am	Sat 5am	Sat 6am	Sat 7am	Sat 8am	Sat 9am	Sat 10am	Sat 11am	Sat 12pm	Sat 1pm	Sat 2pm		
610 Bridge	10	10	6	6	6	9	10	10	10	10	10	10	10	10	10	10	10	10	10	10	10	10	10	10	10	9	10	10	10	7	9	10	10	10	10	10		
Kinder 1	10	10	6	6	6	10	10	10	10	10	10	10	10	10	10	10	10	10	10	10	10	10	10	10	10	9	10	10	10	7	9	10	10	10	10	10		
Greens Bayou	10	10	6	7	6	10	10	10	10	10	10	10	10	10	10	10	10	10	10	10	10	10	10	10	10	10	10	10	10	8	10	10	10	10	10	10		
Shell Crude	10	10	7	9	7	10	10	10	10	10	10	10	10	10	10	10	10	10	10	10	10	10	10	10	10	10	9	10	10	10	8	10	10	10	10	10	10	
Lynchburg Ferries	10	10	8	9	7	10	10	10	10	10	10	10	10	10	10	10	10	10	10	10	10	10	10	10	10	10	10	10	10	8	10	10	10	10	10	10	10	
Exxon 3	10	10	10	10	10	10	10	10	10	10	10	10	10	10	10	10	10	10	10	10	10	10	10	10	10	10	8	10	10	10	8	10	10	10	10	10	10	10
Morgans Point	10	10	10	10	10	10	10	10	10	10	10	10	10	10	10	10	10	10	10	10	10	10	10	10	10	10	8	10	10	10	8	10	10	10	10	10	10	10
75/76	10	10	10	10	10	10	10	10	10	10	10	10	10	10	10	10	10	10	10	10	10	10	10	10	10	9	8	10	10	10	8	10	10	10	10	10	10	10
63/64	10	10	10	10	10	10	10	10	10	10	10	10	10	10	10	10	10	10	10	10	10	10	10	10	10	10	9	10	10	10	8	10	10	10	10	10	10	10
51/52	10	10	10	10	10	10	10	10	10	10	10	10	10	10	10	10	10	10	10	10	10	10	10	10	10	10	10	10	10	10	8	10	10	10	10	10	10	10
37/38	10	10	10	10	10	10	10	10	10	10	10	10	10	10	10	10	10	10	10	10	10	10	10	10	10	10	10	10	10	10	8	10	10	10	10	10	10	10
25/26	10	10	10	10	10	10	10	10	10	10	10	10	10	10	10	10	10	10	10	10	10	10	10	10	10	10	10	10	10	10	8	10	10	10	10	10	10	10
11/12	10	10	10	10	10	10	10	10	10	10	10	10	10	10	10	10	10	10	10	10	10	10	10	10	10	10	10	10	10	10	8	10	10	10	10	10	10	10
1 & 2 Bravo	10	10	10	10	10	10	10	10	10	10	10	10	10	10	10	10	10	10	10	9	9	9	9	9	9	9	8	9	9	9	8	10	10	10	10	10	10	10

NOTE: This is automated data that may/may not agree with the official BAM thinking that's found on the daily slides or special visibility report slides. This data should be used as a guide only

Houston Pilots Wind Chart



Forecast Confidence



Example

Sustained wind 13 Knots
Gusts 18 Knots
Wind from the N

WS: 13
G:18
N

Time Knots	Fri 3am	Fri 4am	Fri 5am	Fri 6am	Fri 7am	Fri 8am	Fri 9am	Fri 10am	Fri 11am	Fri 12pm	Fri 1pm	Fri 2pm	Fri 3pm	Fri 4pm	Fri 5pm	Fri 6pm	Fri 7pm	Fri 8pm	Fri 9pm	Fri 10pm	Fri 11pm	Sat 12am	Sat 1am	Sat 2am	Sat 3am	Sat 4am	Sat 5am	Sat 6am	Sat 7am	Sat 8am	Sat 9am	Sat 10am	Sat 11am	Sat 12pm	Sat 1pm	Sat 2pm	
610 Bridge	1	1	1	3	3	3	4	5	6	5	6	8	9	9	10	13	12	11	8	8	6	7	7	8	8	9	10	11	12	14	13	13	15	16	17	17	
	3	3	3	5	6	8	8	8	8	6	8	10	12	12	14	18	19	17	12	12	9	10	11	12	12	14	15	17	19	21	19	20	22	24	26	25	
	W	ENE	ESE	E	NE	ENE	ESE	SE	SE	SE	SE	SE	SE	SE	SE	SSE	SSE	SSE	SSE	NNW	SSE	NE	NE	SW	WSW	W	WNW	NW	NW	NW	NW	NW	NW	NW	NW	NW	
Kinder 1	1	2	1	3	3	3	4	5	6	5	7	8	9	10	13	12	11	8	7	6	7	8	8	9	9	10	11	12	14	13	13	15	16	17	16		
	3	3	3	5	7	8	8	8	8	7	8	10	12	12	14	18	19	17	12	11	9	10	11	12	12	13	14	17	19	21	19	20	22	24	26	25	
	NW	NE	ESE	E	NE	ENE	E	SE	ESE	ESE	ESE	SE	SE	SE	SE	SSE	SSE	SSE	SSE	NNW	SSW	NE	NE	W	W	WNW	NW	NW	NW	NW	NW	NW	NW	NW	NW		
Greens Bayou	1	2	2	3	3	3	5	6	6	6	8	8	9	9	10	13	12	10	7	6	6	6	7	7	7	8	9	11	12	13	13	13	15	16	17	16	
	3	3	3	5	8	9	8	9	9	8	10	11	12	13	14	17	18	16	11	10	9	10	11	11	11	13	14	16	18	20	18	20	21	23	26	24	
	NNW	ENE	ESE	E	NE	ENE	E	ESE	ESE	ESE	ESE	SE	SE	SE	SE	SSE	SSE	SSE	SSE	NNW	SSE	NE	ENE	W	W	WNW	WNW	NW	NW	NW	NW	NW	NW	NW	NW		
Shell Crude	2	2	2	3	3	3	5	6	6	7	8	8	9	9	10	13	12	11	7	6	6	6	7	7	7	8	10	11	12	13	13	13	15	16	17	16	
	3	3	3	5	8	9	8	9	9	8	10	11	12	12	14	17	18	16	11	10	9	10	10	10	11	11	12	15	16	18	19	18	19	21	23	25	24
	NNW	ENE	E	ENE	NE	ENE	E	ESE	SE	ESE	ESE	SE	SE	SE	SE	SSE	SSE	SSE	SSE	NNW	SSE	NE	ENE	WNW	W	W	WNW	WNW	NW	NW	NW	NW	NW	NW	NW		
Lynchburg Ferries	2	2	2	3	4	3	5	6	6	6	7	8	9	9	9	14	13	11	8	6	6	7	7	8	8	8	10	11	12	13	13	14	15	16	17	17	
	4	3	3	5	9	10	9	9	8	9	10	11	12	14	17	18	16	11	9	9	10	10	11	11	11	12	15	15	17	18	18	19	21	23	25	24	
	NW	ENE	ESE	ENE	NE	ENE	E	ESE	SE	SE	SE	SE	SE	SE	SE	SSE	SSE	SSE	SSE	NW	NE	NE	ENE	WSW	W	W	WNW	NW	NW	NW	NW	NW	NW	NW	NW		
Exxon 3	3	2	2	4	4	3	5	6	6	7	7	8	8	9	9	14	13	11	9	7	7	7	7	8	8	9	11	11	12	13	14	14	16	17	17	17	
	4	4	4	5	9	9	9	9	9	9	9	10	11	12	14	17	18	16	12	10	9	10	10	11	11	12	15	15	17	18	18	19	20	23	24	24	
	SSW	ENE	E	NE	NE	ENE	E	ESE	SE	SE	SE	SE	SE	SE	SE	SSE	SSE	SSE	SSE	W	NE	NE	E	WNW	SW	WNW	W	WNW	NW	NW	NW	NW	NW	NW	NW		
Morgans Point	4	3	3	4	5	5	6	7	7	8	8	8	9	10	11	15	15	13	11	8	7	8	8	9	9	10	12	12	14	14	15	16	18	18	18	18	
	5	5	4	5	8	9	8	10	10	9	9	10	11	12	15	18	19	17	14	11	10	10	10	12	12	12	16	16	17	18	19	20	21	23	24	24	
	ESE	NE	E	ENE	ENE	ENE	E	ESE	SE	SE	SE	SE	SE	SE	SE	SSE	SSE	SSE	SSE	SW	NE	NE	ESE	WNW	SSW	WNW	W	WNW	NW	NW	NW	NW	NW	NW	NW		
75/76	5	4	4	5	6	8	8	10	9	9	9	10	10	11	13	18	18	17	14	11	8	10	10	11	12	11	15	16	17	19	19	19	19	21	21	21	
	6	5	5	5	7	9	9	11	10	10	9	10	11	13	15	20	20	19	16	13	11	11	11	11	13	13	17	18	19	21	22	22	22	25	26	27	
	N	NNE	E	ESE	E	E	E	ESE	SE	SE	SE	SE	SE	SE	SE	SSE	SSE	SSE	SSE	SSW	ENE	NE	WSW	WNW	SSE	WNW	W	WNW	NW	NW	NW	NW	NW	NW	NW		
63/64	5	4	5	5	6	9	9	10	10	10	9	10	10	11	13	18	19	17	14	11	8	11	11	12	12	11	15	18	19	21	22	22	22	21	24	23	24
	5	4	5	6	7	9	9	11	11	10	9	10	10	12	15	20	21	19	16	13	12	12	12	13	13	12	16	20	20	23	24	24	23	26	27	28	
	N	NE	ESE	ESE	E	E	E	ESE	SE	SE	SE	SE	SE	SE	SE	SSE	SSE	SSE	SSE	S	E	NE	NNW	NW	ESE	WNW	W	WNW	NW	NW	NW	NW	NW	NW	NW		
51/52	5	4	5	5	6	8	9	10	11	9	8	9	10	11	13	18	18	16	14	10	9	11	11	11	11	10	13	18	18	21	22	22	22	24	24	25	
	5	4	6	6	6	8	10	11	12	10	9	10	10	12	14	19	20	18	15	12	13	12	12	12	13	12	11	15	20	20	23	24	24	24	27	28	
	NNE	ENE	ESE	ESE	E	E	E	ESE	SE	SE	ESE	SE	SE	SE	SE	SSE	SSE	SSE	SSE	SSE	SSW	NE	NNW	NW	E	WNW	W	WNW	NW	NW	NW	NW	NW	NW	NW		
37/38	4	4	6	6	6	7	9	11	11	9	8	9	10	11	12	16	17	15	13	10	9	10	10	11	9	9	12	17	17	20	21	22	22	24	24	25	
	4	4	6	6	7	8	10	11	12	9	8	10	10	12	14	18	19	17	15	12	13	12	12	12	11	10	14	18	19	22	24	24	25	27	27	28	
	NNE	ENE	ESE	ESE	E	E	E	ESE	SE	SE	ESE	SE	SE	SE	SE	SSE	SSE	SSE	SSE	SSE	NW	NE	N	NNW	ENE	WNW	W	WNW	NW	NW	NW	NW	NW	NW	NW		
25/26	4	5	6	6	6	6	8	10	10	8	8	9	9	10	11	14	15	13	12	9	9	9	9	9	8	11	15	15	18	19	20	21	23	23	24		
	5	6	6	6	7	8	10	12	12	9	8	9	10	11	13	16	17	16	15	13	13	12	11	12	10	10	14	17	17	20	22	22	24	26	26	28	
	NE	E	E	ESE	E	E	E	ESE	SE	SE	ESE	ESE	SE	ESE	SE	SSE	SSE	SSE	SSE	WSW	SE	NNW	NNW	NE	NW	WNW	WNW	NW	NW	NW	NW	NW	NW	NW	NW		
11/12	5	6	6	6	6	6	9	11	10	8	7	8	9	10	11	14	14	13	12	10	9	8	8	9	9	11	14	14	17	19	20	21	22	23	24		
	6	6	6	6	7	7	10	12	12	9	8	9	10	11	13	16	16	16	15	14	14	12	11	11	11	11	14	17	17	20	22	22	25	26	26	28	
	NE	ENE	E	ESE	E	E	E	ESE	SE	SE	ESE	ESE	ESE	ESE	SE	SSE	SSE	SSE	SSE	WSW	SSW	NNW	NNW	NE	NNW	WNW	WNW	NW	NW	NW	NW	NW	NW	NW	NW		
1 & 2 Bravo	6	7	6	6	7	7	10	12	11	8	7	8	8	10	12	15	16	15	14	11	11	9	9	11	10	10	12	16	17	20	23	24	25	26	27	28	
	6	7	6	6	7	8	10	13	12	9	8	8	9	11	13	16	18	16	15	14	14	12	11	12	12	12	15	17	18	22	25	26	27	28	29	30	
	NNE	ENE	ENE	E	E	E	E	ESE	SE	ESE	E	ESE	ESE	ESE	ESE	SE	SE	SE	SSE	SSE	NE	NE	NNE	NNW	SSW	SSE	W	WNW	NW	NW	NW	NW	NW	NW	NW		

NOTE: This is automated data that may/may not agree with the official BAM thinking that's found on the daily slides or special visibility report slides. This data should be used as a guide only

Houston Pilots: Fri. 4/28/2023



Forecast Discussion

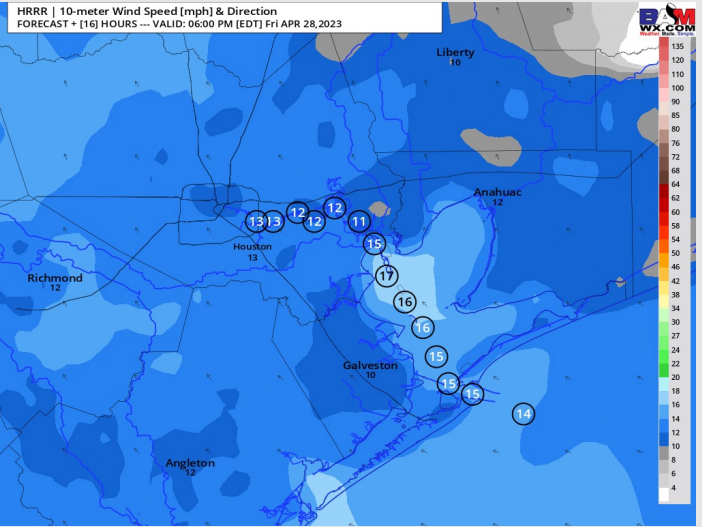
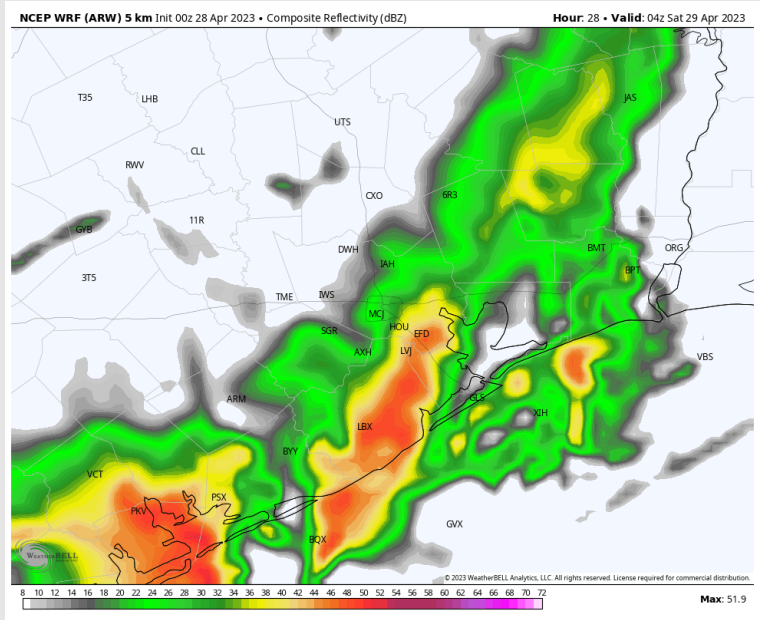
Precip: Favoring dry conditions throughout the day today with chances picking up for showers/thunderstorms at 11 PM - midnight tonight. More details on SAT's slide.

Wind: Sustained winds starting out of N today and gradually shift to out of the S/SE by 9 AM local time and remain that way for the rest of the day. Winds N of Morgan's Point will be 5-10 kts throughout the mid-PM before picking up to 8-13 knots for the evening. Winds S of Morgan's Point will be 8-13 kts throughout the AM before turning 10-15 kts for the PM. Gusts of 15-20 knots at the boarding station will be possible today.

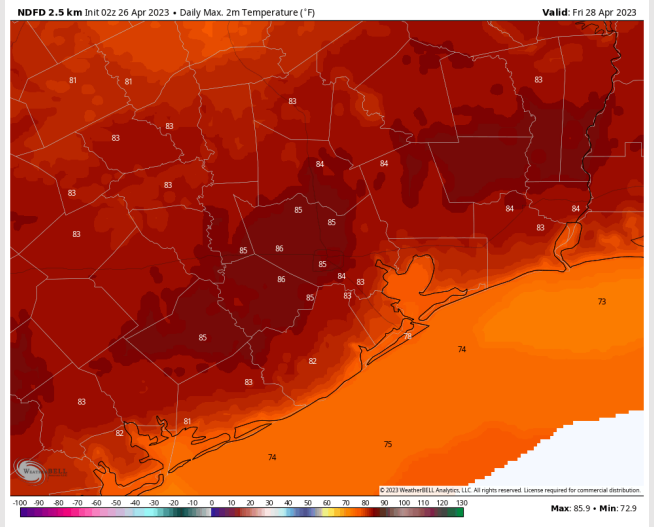
Temps: High temperatures this afternoon will be in the mid to upper 70s F S of Morgan's Point and in the low 80s F N of Morgan's Point.

Visibility: Reduced visibility is not a concern.

Precip Image: 12 AM CT SAT



Wind Speed:
5 PM CT



High Temps
Today

Houston Pilots: sat. 4/29/2023



Forecast Discussion

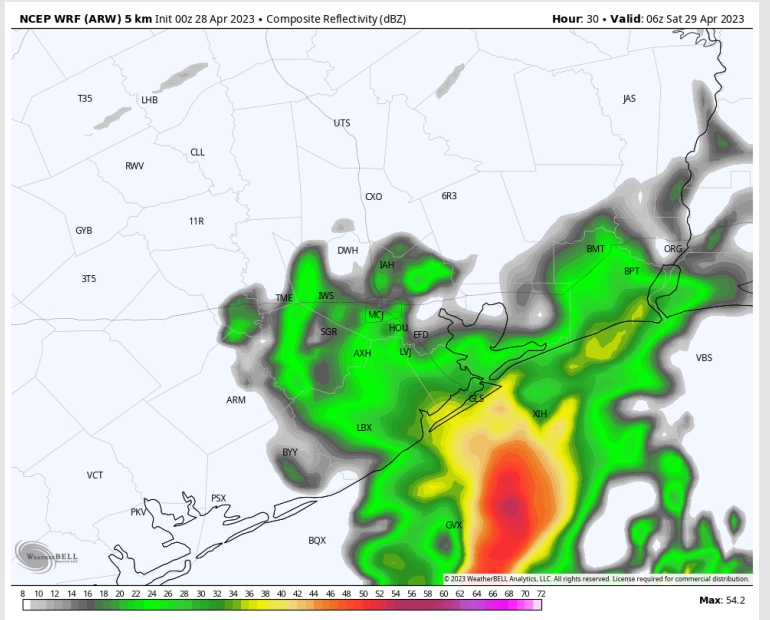
Precip: Some uncertainties remain on the exact time window for strong to potentially severe thunderstorms to work through the area, but currently favoring 12-5 AM for the best risk. Scattered showers and a few thunderstorms will be possible through 10 AM before chances taper off for the day. Wind gusts will be the main severe threat.

Wind: Expecting the front to pass between 12-2 AM and allow for winds to turn out of the north. Under the heaviest AM storms, some gusts 30-40 knots will be possible. After the front works through and near daybreak, winds become elevated at 23-28 kts S of Morgan's Point with gusts up to 35 knots. Getting into the evening / after 7 PM winds will range from 13 - 18 kts N of Morgan's Point and 20-25 kts S of Morgan's Point.

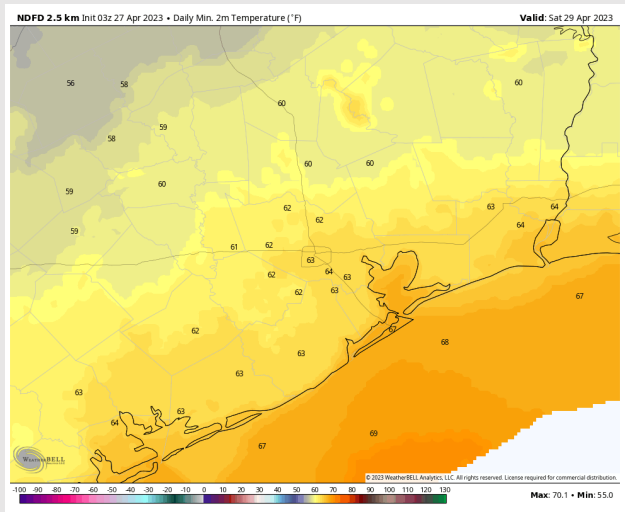
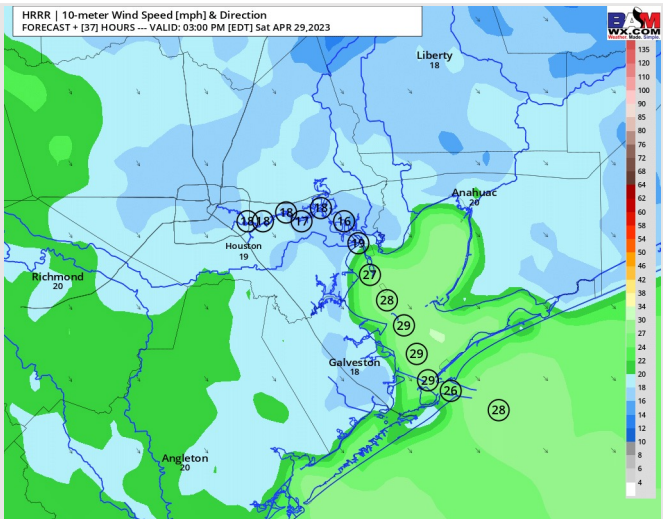
Temps: High temperatures Saturday in the mid to upper 60s F for all stations.

Visibility: Reduced visibility thanks to heavy rains will be possible.

Precip Image: 2 AM CT



Wind Speed:
2 PM CT



High Temps
Saturday

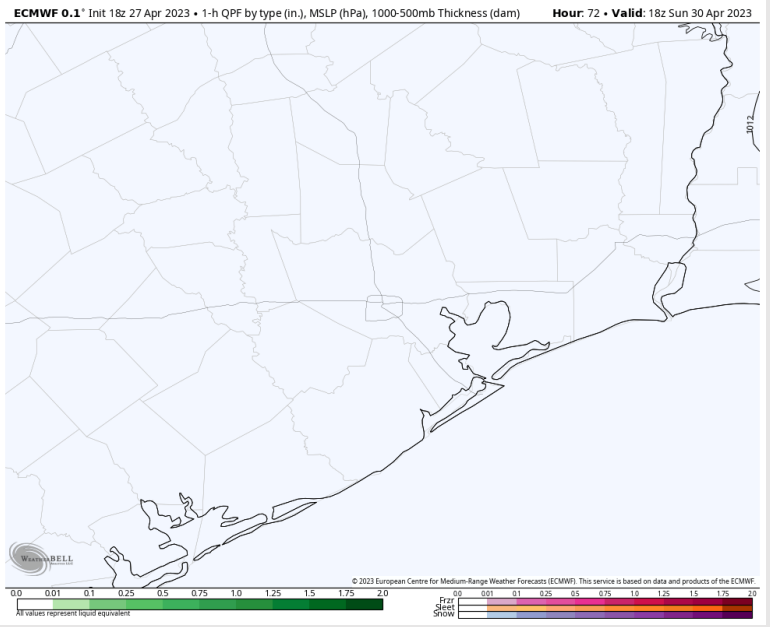
Houston Pilots: Sun. 4/30/2023



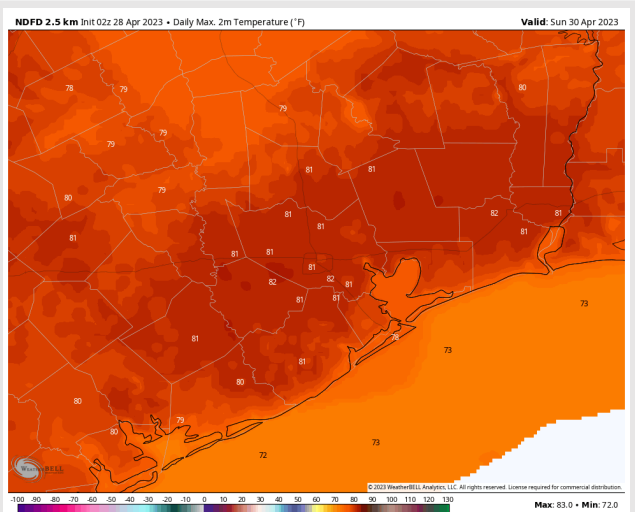
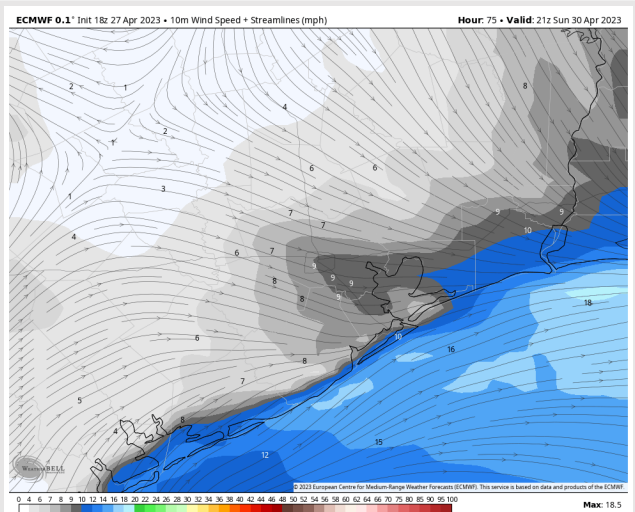
Forecast Discussion

- Precip:** Favoring dry conditions Sunday.
- Wind:** Sustained winds Sunday will likely begin out of the NW then gradually veer from the SW through the late AM. Winds north of Morgan's Point will generally be 5-10 kts while winds south of Morgan's Point range from 13-18 kts.
- Temps:** High temps Sunday int the low 70s F at the Boarding Station and in the low 80s F at all other stations.
- Visibility:** Not anticipating any visibility concerns.

Precip Image: 1 PM CT



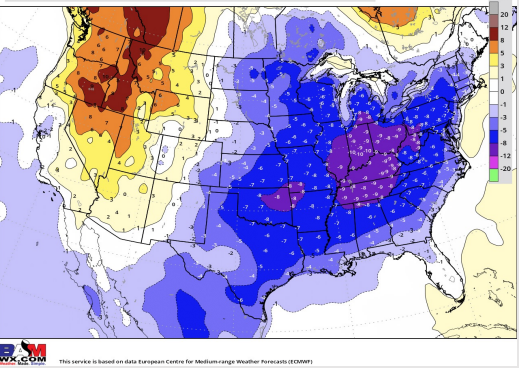
Wind Speed:
4 PM CT



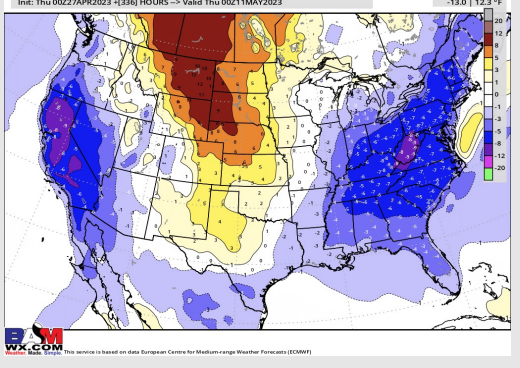
High Temps
Sunday

Houston Pilots: 4/28/23

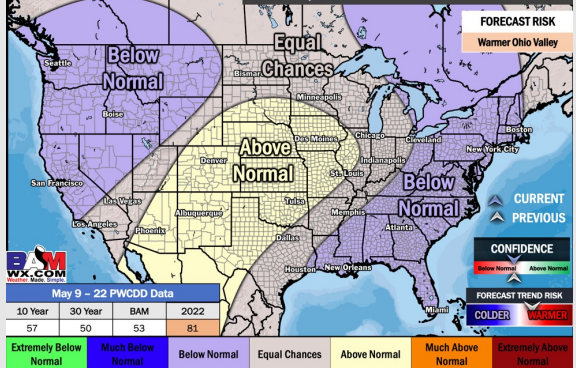
Next 7 Day Temperature Departure



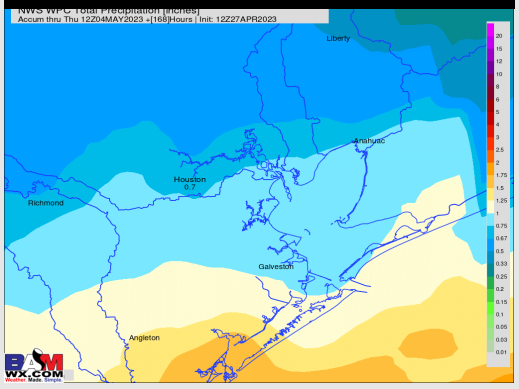
8-14 Day Temperature Departure



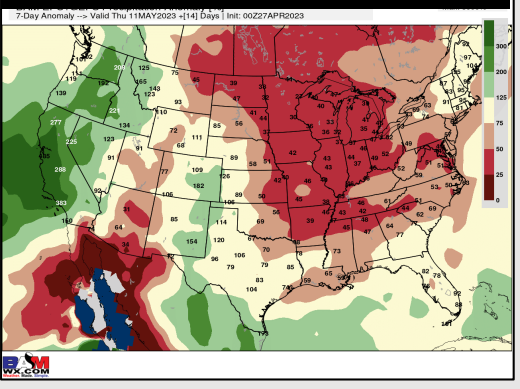
15-30 Day Temperature Departure



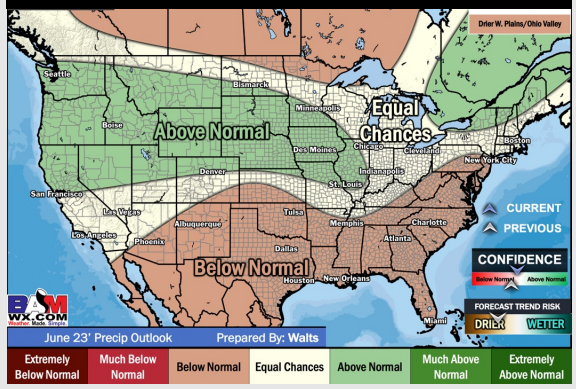
Next 7 Day Total Precipitation



8-14 Day % of Average Precip.



15-30 Day % of Average Precip.



- Main focus for precip will come on Sat AM. Outside of this, anticipating quieter weather with temps below average for this time of year.
- Expecting below normal precipitation chances and slightly below normal temperatures for the week 2 timeframe.
- Near to slightly below normal temperatures and below normal chances for precipitation are favored in the week ¾ timeframe.