

Houston Pilots Forecast Package



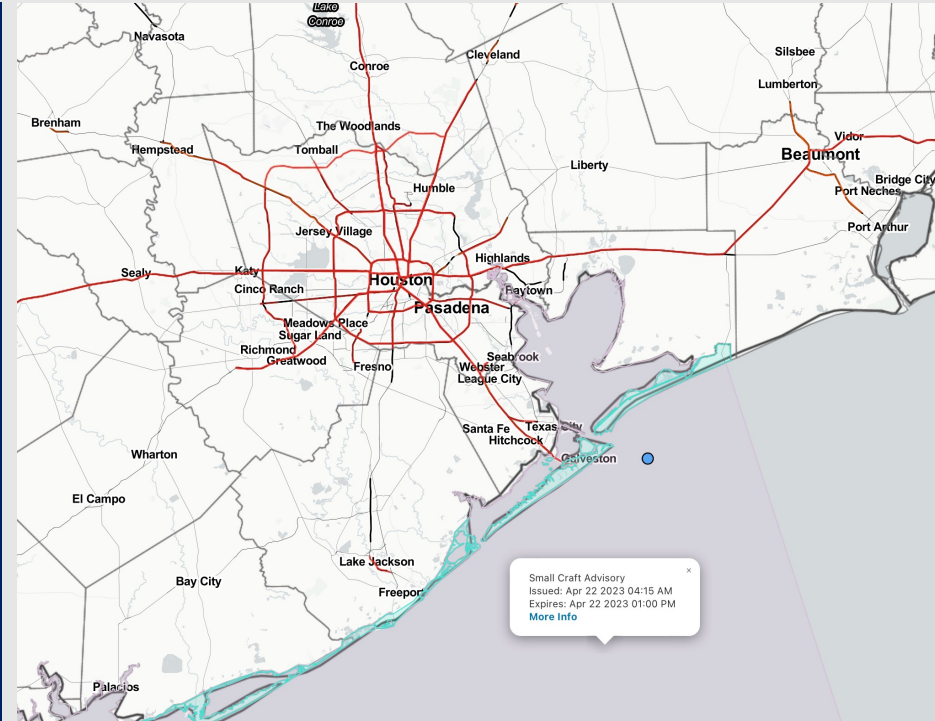
Updated: 12:45 PM CT

Saturday, April 22, 2023

Forecaster: Alyssa McClung

Weather Headlines

- Winds slightly elevated through the rest of the weekend with the stronger winds up to 25 kts moving in Sunday PM primarily at the Boarding Station.
- Fog threats look rather limited moving forward over the next several days.
- Minor chances for sporadic showers through the weekend with better rain chances coming in early next week.



Radar/NWS Alerts: 12:45 AM CT



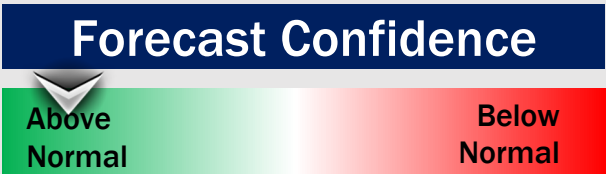
As always, please do not hesitate to reach out to us with any forecast questions via the chat option on the Weather Porthole or our on-call number, **(317)-560-8122** press 1 for forecast questions.

Houston Pilots Extended Range Visibility Report



Tuesday 4/25/23

Reduced visibility does not look to be a concern for Tuesday.



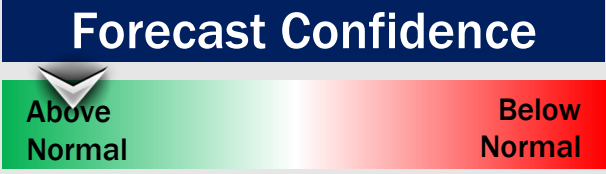
Thursday 4/27/23

Reduced visibility does not look to be a concern for Thursday.



Wednesday 4/26/23

Reduced visibility does not look to be a concern for Wednesday.



Chance for Reduced Visibility

Tuesday AM	Unlikely
Tuesday PM	Unlikely
Wednesday AM	Unlikely
Wednesday PM	Unlikely
Thursday AM	Unlikely
Thursday PM	Unlikely

Houston Pilots Visibility Chart (miles)



Time	Sat 12pm	Sat 1pm	Sat 2pm	Sat 3pm	Sat 4pm	Sat 5pm	Sat 6pm	Sat 7pm	Sat 8pm	Sat 9pm	Sat 10pm	Sat 11pm	Sun 12am	Sun 1am	Sun 2am	Sun 3am	Sun 4am	Sun 5am	Sun 6am	Sun 7am	Sun 8am	Sun 9am	Sun 10am	Sun 11am	Sun 12pm	Sun 1pm	Sun 2pm	Sun 3pm	Sun 4pm	Sun 5pm	Sun 6pm	Sun 7pm	Sun 8pm	Sun 9pm	Sun 10pm	Sun 11pm
610 Bridge	10	10	10	10	10	10	10	10	10	10	10	10	10	10	10	10	10	10	10	10	10	10	10	10	10	10	10	10	10	9	9	10	10	10	10	10
Kinder 1	10	10	10	10	10	10	10	10	10	10	10	10	10	10	10	10	10	10	10	10	10	10	10	10	10	10	10	10	10	10	9	10	10	10	10	10
Greens Bayou	10	10	10	10	10	10	10	10	10	10	10	10	10	10	10	10	10	10	10	10	10	10	10	10	10	10	10	10	10	10	10	10	10	10	10	10
Shell Crude	10	10	10	10	10	10	10	10	10	10	10	10	10	10	10	10	10	10	10	10	10	10	10	10	10	10	10	10	10	10	10	10	10	10	10	10
Lynchburg Ferries	10	10	10	10	10	10	10	10	10	10	10	10	10	10	10	10	10	10	10	10	10	10	10	10	10	10	10	10	10	10	10	10	10	10	10	10
Exxon 3	10	10	10	10	10	10	10	10	10	10	10	10	10	10	10	10	10	10	10	10	10	10	10	10	10	10	10	10	10	10	10	10	10	10	10	10
Morgans Point	10	10	10	10	10	10	10	10	10	10	10	10	10	10	10	10	10	10	10	10	10	10	10	10	10	10	10	10	10	10	10	10	10	10	10	10
75/76	10	10	10	10	10	10	10	10	10	10	10	10	10	10	10	10	10	10	10	10	10	10	10	10	10	10	10	10	10	10	10	10	10	10	10	10
63/64	10	10	10	10	10	10	10	10	10	10	10	10	10	10	10	10	10	10	10	10	10	10	10	10	10	10	10	10	10	10	10	10	10	10	10	10
51/52	10	10	10	10	10	10	10	10	10	10	10	10	10	10	10	10	10	10	10	10	10	10	10	10	10	10	10	10	10	10	10	10	10	10	10	10
37/38	10	10	10	10	10	10	10	10	10	10	10	10	10	10	10	10	10	10	10	10	10	10	10	10	10	10	10	10	10	10	10	10	10	10	10	10
25/26	10	10	10	10	10	10	10	10	10	10	10	10	10	10	10	10	10	10	10	10	10	10	10	10	10	10	10	10	10	10	10	10	10	10	10	10
11/12	10	10	10	10	10	10	10	10	10	10	10	10	10	10	10	10	10	10	10	10	10	10	10	10	10	10	10	10	10	10	10	10	10	10	10	10
1 & 2 Bravo	10	10	10	10	10	10	10	10	10	10	10	10	10	10	10	10	10	10	10	10	10	10	10	10	10	10	10	10	10	10	10	10	10	10	10	10

NOTE: This is automated data that may/may not agree with the official BAM thinking that's found on the daily slides or special visibility report slides. This data should be used as a guide only

Houston Pilots Wind Chart



Forecast Confidence



Example

Sustained wind 13 Knots
Gusts 18 Knots
Wind from the N

WS: 13
G:18
N

Time Knots	Sat 12pm	Sat 1pm	Sat 2pm	Sat 3pm	Sat 4pm	Sat 5pm	Sat 6pm	Sat 7pm	Sat 8pm	Sat 9pm	Sat 10pm	Sat 11pm	Sun 12am	Sun 1am	Sun 2am	Sun 3am	Sun 4am	Sun 5am	Sun 6am	Sun 7am	Sun 8am	Sun 9am	Sun 10am	Sun 11am	Sun 12pm	Sun 1pm	Sun 2pm	Sun 3pm	Sun 4pm	Sun 5pm	Sun 6pm	Sun 7pm	Sun 8pm	Sun 9pm	Sun 10pm	Sun 11pm							
610 Bridge	10	9	11	11	12	11	10	9	5	3	3	2	3	4	7	6	6	7	7	8	10	10	12	12	13	13	13	13	13	12	13	13	13	13	13	13	14	13					
	ESE	ESE	ESE	ESE	ESE	ESE	SE	SE	SE	SE	ESE	ESE	ESE	E	SE	ENE	ENE	NE	NE	NE	NE	NE	ENE	ENE	ENE	ENE	ENE	ENE	ENE	ENE	ENE	ENE	ENE	ENE	ENE	ENE	ENE						
Kinder 1	10	9	11	11	12	11	10	8	5	3	2	2	3	4	7	6	7	7	8	10	10	11	12	13	13	13	13	13	12	13	13	13	13	13	13	13	14	13					
	ESE	ESE	ESE	ESE	ESE	SE	SE	SE	SE	SE	ESE	E	E	SE	ENE	ENE	NE	NE	NE	NE	NE	NE	ENE	ENE	ENE	ENE	ENE	ENE	ENE	ENE	ENE	ENE	ENE	ENE	ENE	ENE	ENE						
Greens Bayou	9	9	10	11	11	10	10	8	5	3	2	2	4	5	7	6	7	7	8	9	10	11	12	13	13	13	13	13	12	13	13	13	13	13	13	12	13	12					
	E	ESE	ESE	ESE	ESE	SE	SE	SE	SE	SE	E	ESE	E	E	SE	ENE	ENE	NE	NE	NE	NE	NE	ENE	ENE	ENE	ENE	ENE	ENE	ENE	ENE	ENE	ENE	ENE	ENE	ENE	ENE	ENE	ENE					
Shell Crude	10	9	10	11	11	10	10	8	5	3	2	2	4	4	7	6	7	7	8	9	10	11	13	13	13	13	13	13	13	12	13	13	13	13	12	13	12	13					
	E	ESE	ESE	ESE	ESE	SE	SE	SE	SE	SE	E	ESE	E	E	SE	ENE	ENE	NE	NE	NE	NE	NE	ENE	ENE	ENE	ENE	ENE	ENE	ENE	ENE	ENE	ENE	ENE	ENE	ENE	ENE	ENE	ENE					
Lynchburg Ferries	9	8	10	10	11	10	9	6	4	4	3	3	4	5	6	7	7	8	8	9	10	11	11	13	13	13	13	13	12	13	13	13	13	14	13	13	14	12					
	E	ESE	ESE	ESE	ESE	SE	SE	SE	SE	SE	E	ESE	E	E	SE	ENE	ENE	NE	NE	NE	NE	NE	ENE	ENE	ENE	ENE	ENE	ENE	ENE	ENE	ENE	ENE	ENE	ENE	ENE	ENE	ENE	ENE					
Exxon 3	15	12	13	15	16	15	16	15	13	13	10	10	11	13	18	10	11	11	11	13	14	15	16	18	16	17	18	18	17	19	19	20	18	19	20	18	19	20	18				
	E	ESE	ESE	ESE	ESE	SE	SE	SE	SE	SE	E	ESE	E	E	SE	E	ENE	ENE	NE	NE	NE	NE	ENE	ENE	ENE	ENE	ENE	ENE	ENE	ENE	ENE	ENE	ENE	ENE	ENE	ENE	ENE	ENE	ENE				
Morgans Point	11	11	11	13	13	12	12	9	8	8	7	6	7	8	11	9	10	10	11	11	12	13	14	15	14	15	14	15	14	16	16	16	15	15	16	15	16	15					
	E	ESE	ESE	ESE	ESE	SE	SE	SE	SE	SE	ESE	ESE	E	E	SE	E	ENE	ENE	NE	NE	NE	NE	ENE	ENE	ENE	ENE	ENE	ENE	ENE	ENE	ENE	ENE	ENE	ENE	ENE	ENE	ENE	ENE	ENE				
75/76	15	14	15	16	17	16	15	13	12	12	10	9	10	12	16	12	13	15	15	16	16	17	18	18	18	18	17	18	17	18	17	19	20	20	20	20	20	20					
	E	ESE	ESE	ESE	ESE	ESE	ESE	ESE	ESE	ESE	ESE	ESE	E	E	SE	E	E	ENE	ENE	ENE	ENE	ENE	ENE	ENE	ENE	ENE	ENE	ENE	ENE	ENE	ENE	ENE	ENE	ENE	ENE	ENE	ENE	ENE	ENE				
63/64	18	16	16	17	17	16	16	14	12	12	11	10	11	12	15	13	14	16	16	18	18	18	19	20	20	19	19	19	18	20	21	22	22	23	24	24	24	24	22				
	E	ESE	ESE	ESE	ESE	ESE	ESE	ESE	ESE	ESE	ESE	ESE	E	E	SE	ESE	E	E	ENE	ENE	ENE	ENE	ENE	E	ENE	E	ENE	E	ENE	E	ENE	E	ENE	E	ENE	E	ENE	ENE	ENE				
51/52	19	17	16	17	17	17	16	14	12	12	11	10	11	12	13	13	13	15	15	17	17	18	19	20	20	18	18	20	18	19	21	22	21	21	21	21	21	21	21				
	E	E	ESE	ESE	ESE	ESE	ESE	ESE	ESE	ESE	ESE	ESE	E	E	ESE	ESE	E	E	ENE	ENE	ENE	ENE	ENE	E	E	E	ENE	E	E	ENE	E	E	ENE	E	ENE	E	ENE	ENE	ENE				
37/38	18	17	16	17	17	16	15	14	12	11	10	9	10	11	12	12	13	14	14	16	16	18	19	20	20	19	19	20	19	19	20	19	20	21	21	21	21	21	21				
	E	E	ESE	ESE	ESE	ESE	ESE	ESE	ESE	ESE	ESE	ESE	ESE	E	E	ENE	ENE	ENE	ENE	E	E	ENE	ENE	ENE	E	E	E	E	E	E	E	E	E	E	E	E	E	ENE	ENE				
25/26	18	17	15	16	16	15	14	13	11	10	9	8	9	10	11	12	12	13	12	14	15	16	18	18	19	19	19	19	20	19	19	20	19	19	20	19	19	20	20				
	E	E	ESE	ESE	ESE	ESE	ESE	ESE	ESE	ESE	ESE	ESE	ESE	ESE	ESE	ESE	ESE	ESE	E	E	ENE	ENE	ENE	E	E	E	E	E	E	E	E	E	E	E	E	E	E	E	E	ENE	ENE		
11/12	18	17	15	15	16	15	15	13	11	11	10	9	10	11	12	12	12	13	12	14	15	16	18	19	20	19	19	20	20	19	20	19	20	19	19	20	19	19	20				
	E	E	ESE	ESE	ESE	ESE	ESE	ESE	ESE	ESE	ESE	ESE	ESE	ESE	ESE	ESE	ESE	ESE	E	E	ENE	ENE	ENE	E	E	E	E	E	E	E	E	E	E	E	E	E	E	E	E	E	ENE	ENE	
1 & 2 Bravo	19	18	16	17	17	16	17	15	13	13	12	11	11	12	14	14	14	15	15	16	17	19	20	22	23	22	23	22	23	22	24	23	23	23	23	23	23	23	23	23			
	E	E	ESE	ESE	ESE	ESE	ESE	ESE	ESE	ESE	ESE	ESE	ESE	ESE	ESE	ESE	ESE	ESE	E	E	E	E	ENE	ENE	E	E	E	E	E	E	E	E	E	E	E	E	E	E	E	E	E	E	ENE

NOTE: This is automated data that may/may not agree with the official BAM thinking that's found on the daily slides. This data should be used as a guide only

Houston Pilots: Sat. 4/22/2023



Forecast Discussion

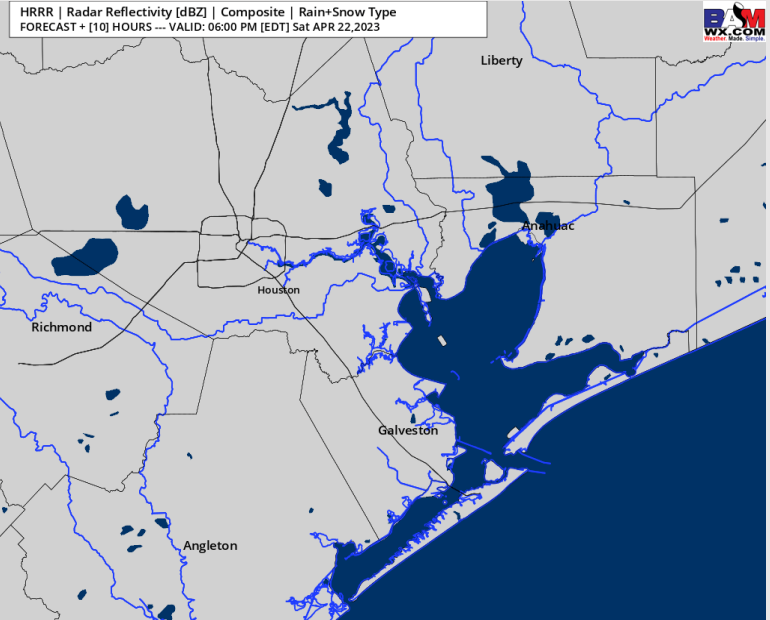
Precip: Anticipating dry conditions throughout the day today.

Wind: Winds out of the E will gradually shift out of the SE by 5 PM and continue at this direction for the rest of the day. Winds north of Morgan's Point will be 8-13 kts and winds south of Morgan's Point being 15-22 kts through 8 PM. After 8 PM, winds north of Morgan's Point will calm down to 3-8 kts and south of Morgan's Point to 9-14 kts. Gusts up to 25 kts will be possible through the evenings.

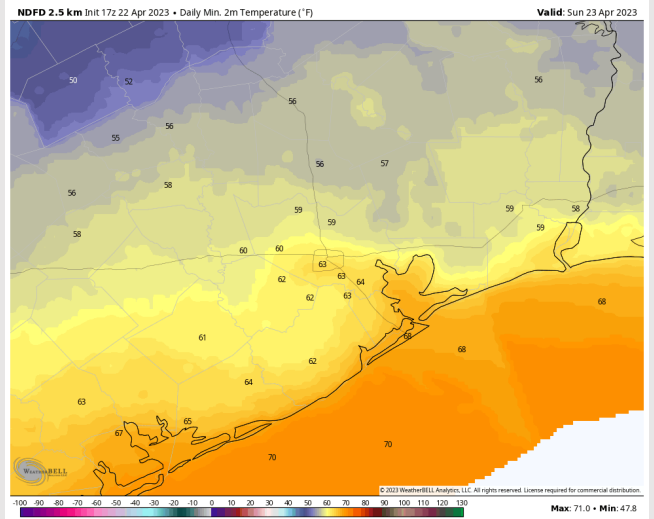
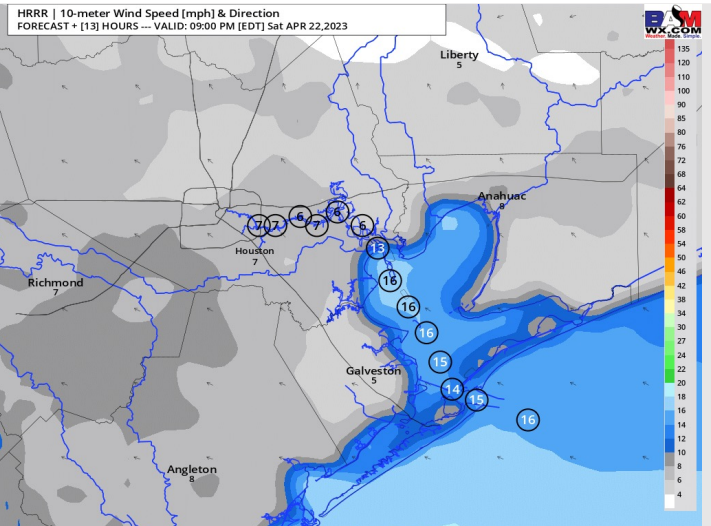
Temps: Low temperatures Sunday morning will be in the upper 60s F at the Boarding Station and in the low 60s F at all other stations.

Visibility: No reduced visibility concerns expected at this time.

Precip Image: 5 PM CT



Wind Speed:
8 PM CT



Low Temps
Sunday AM

Houston Pilots: Sun. 4/23/2023



Forecast Discussion

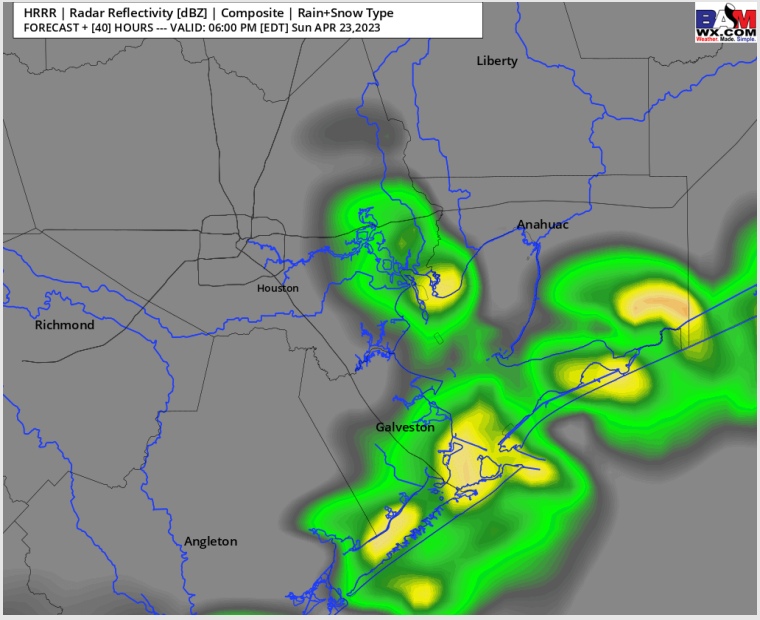
Precip: Favoring dry conditions throughout the morning on Sunday. After 12 PM favoring a 30-40% chance for a few scattered showers through 7 PM, then dry conditions once again the rest of the day Sunday.

Wind: Winds will be out of the E throughout the day Sunday. Winds N of Morgan's Point will be 4-7 kts until around 5 AM. Then after 5 AM, winds will pick up 9-15 kts throughout the rest of the day Sunday. Winds S of Morgan's Point will be 9-15 kts until around 5 AM. Then winds will pick up to 17-23 kts for the rest of the day.

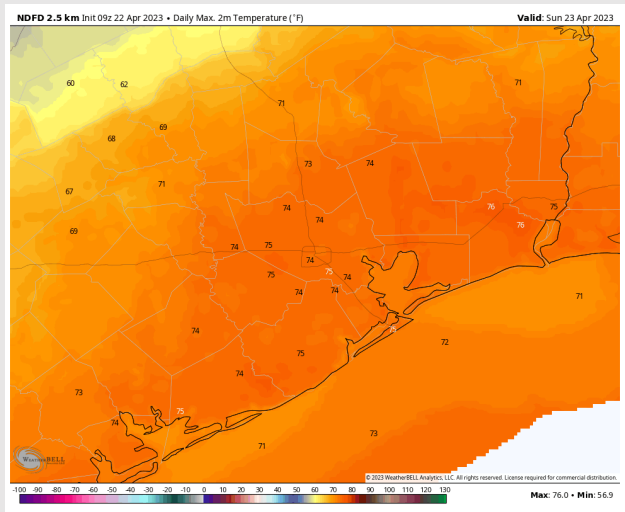
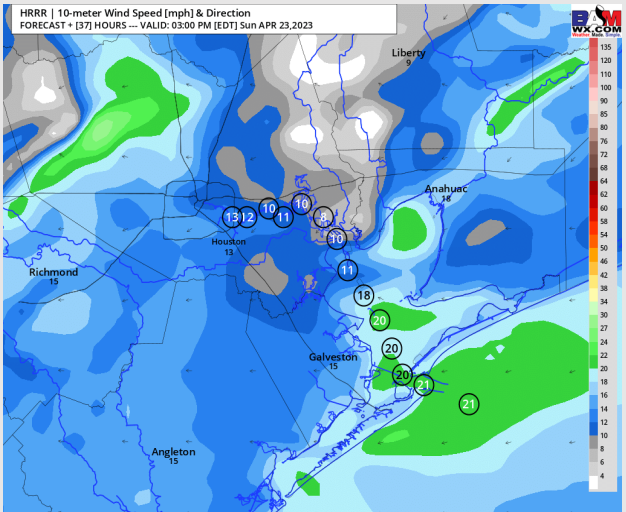
Temps: High temps Sunday will be in the low to mid 70s F across all stations.

Visibility: No visibility issues anticipated.

Precip Image: 5 PM CT



Wind Speed:
2 PM CT



High Temps
Sunday

Houston Pilots: Mon. 4/24/2023



Forecast Discussion

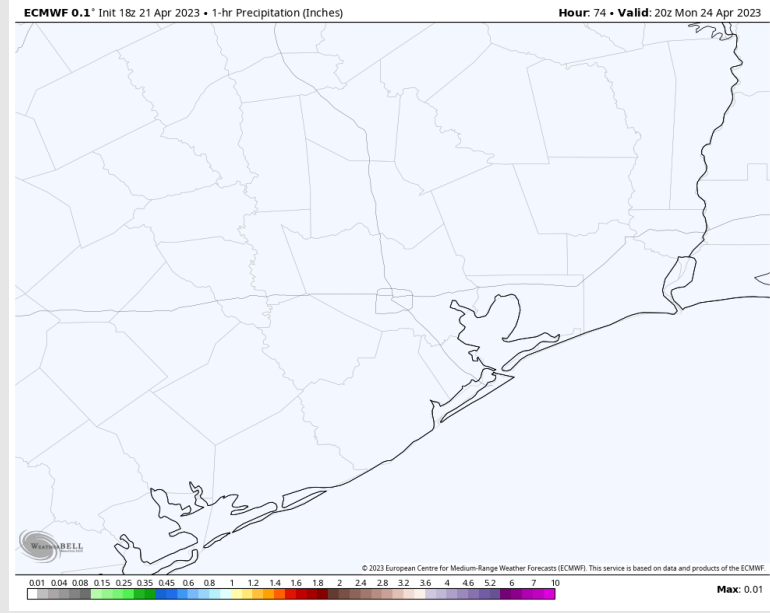
Precip: Anticipating dry conditions throughout the day Monday.

Wind: Sustained winds out of the NE Monday in the 10 – 15 kts range for stations N of Morgan’s Point with stations S of Morgan’s Point at 18 - 23 kts. Elevated wind gusts up to 30+ kts will be possible early Monday AM.

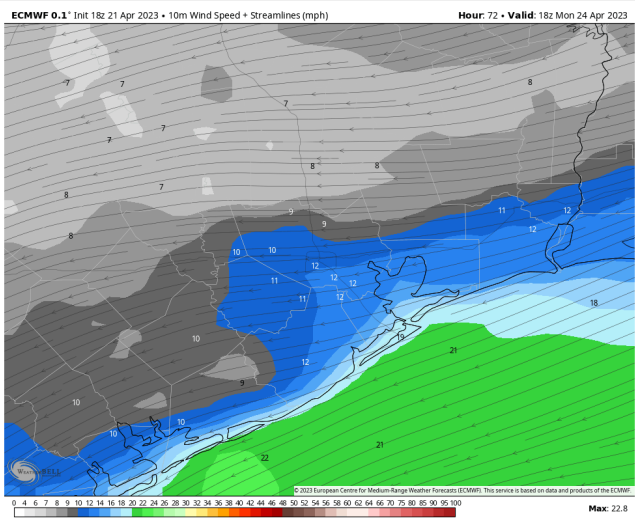
Temps: High temperatures Monday in the low 70s F across all stations.

Visibility: Not anticipating any visibility concerns at this time.

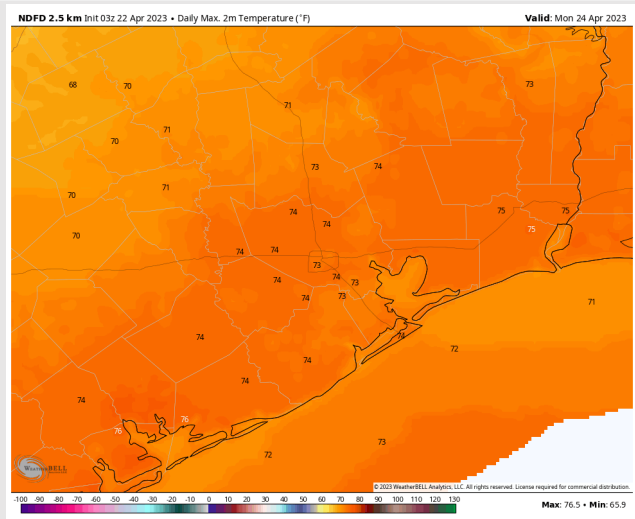
Precip Image: 3 PM CT



Wind Speed:
1 PM CT

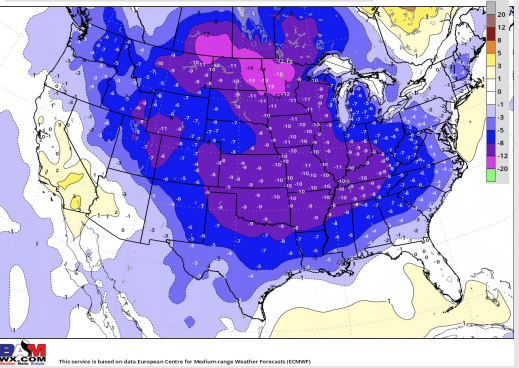


High Temps
Monday

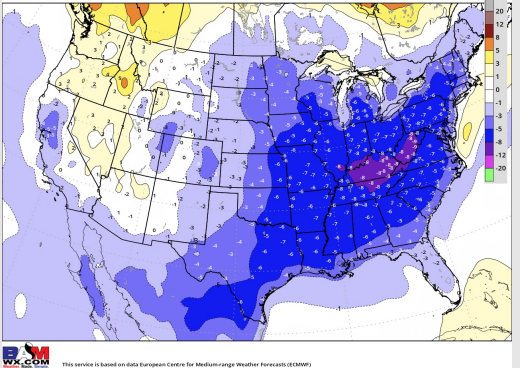


Houston Pilots: 4/22/23

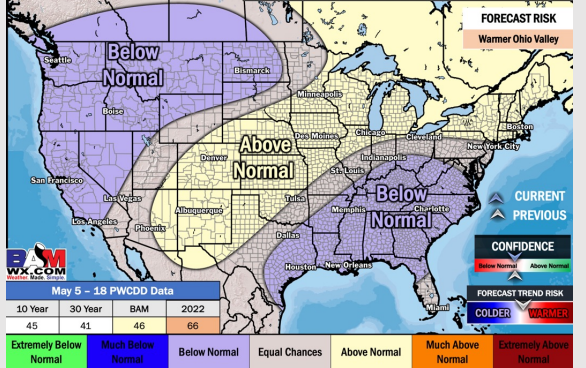
Next 7 Day Temperature Departure



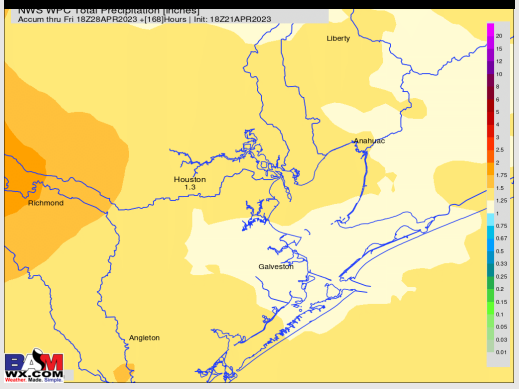
8-14 Day Temperature Departure



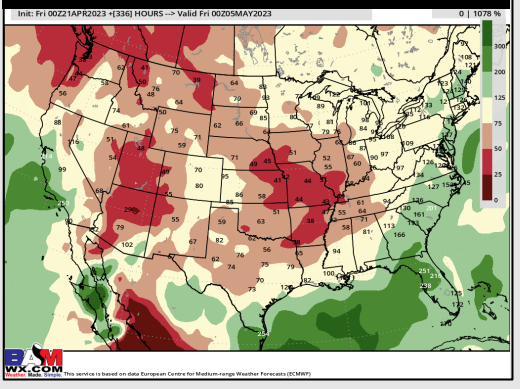
15-30 Day Temperature Departure



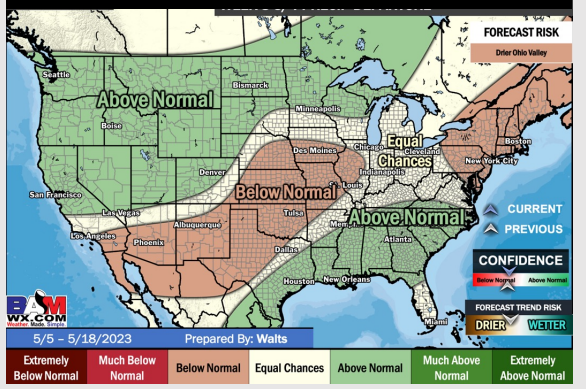
Next 7 Day Total Precipitation



8-14 Day % of Average Precip.



15-30 Day % of Average Precip.



- Multiple shots of precipitation getting into the start of the week with the next chances moving in closer to next weekend. Temps will be below normal for SE TX.
- Expecting near normal precipitation chances and below normal temperatures for the week 2 timeframe.
- Below normal temperatures and above normal chances for precipitation are favored in the week 3/4 timeframe.